

\*\*\*\*\*  
Marine Weather Forecast for Nautilus  
Forecast valid as of 30-Dec-2024 0900 GMT  
\*\*\*\*\*

All times are local.

Today

Winds: E, 10-15 kts.  
Waves: N, 4-5 feet, 7-8 sec.  
No currents available.

Tonight

Winds: E, 15-20 kts.  
Waves: N, 4-5 feet, 11-12 sec.  
No currents available.

Tuesday

Winds: E, 15-20 kts.  
Waves: N, 5-6 feet, 6-7 sec.  
No currents available.

Tuesday Night

Winds: E, 15-20 kts.  
Waves: W, 4-5 feet, 12-13 sec.  
No currents available.

Wednesday

Winds: E, 15-20 kts.  
Waves: E, 4-5 feet, 12-13 sec.  
No currents available.

Wednesday Night

Winds: E, 10-15 kts.  
Waves: NW, 3-4 feet, 11-12 sec.  
No currents available.

Thursday

Winds: E, 15-20 kts.  
Waves: NW, 4-5 feet, 11-12 sec.  
No currents available.

Thursday Night

Winds: E, 15-20 kts.  
Waves: W, 4-5 feet, 10-11 sec.  
No currents available.

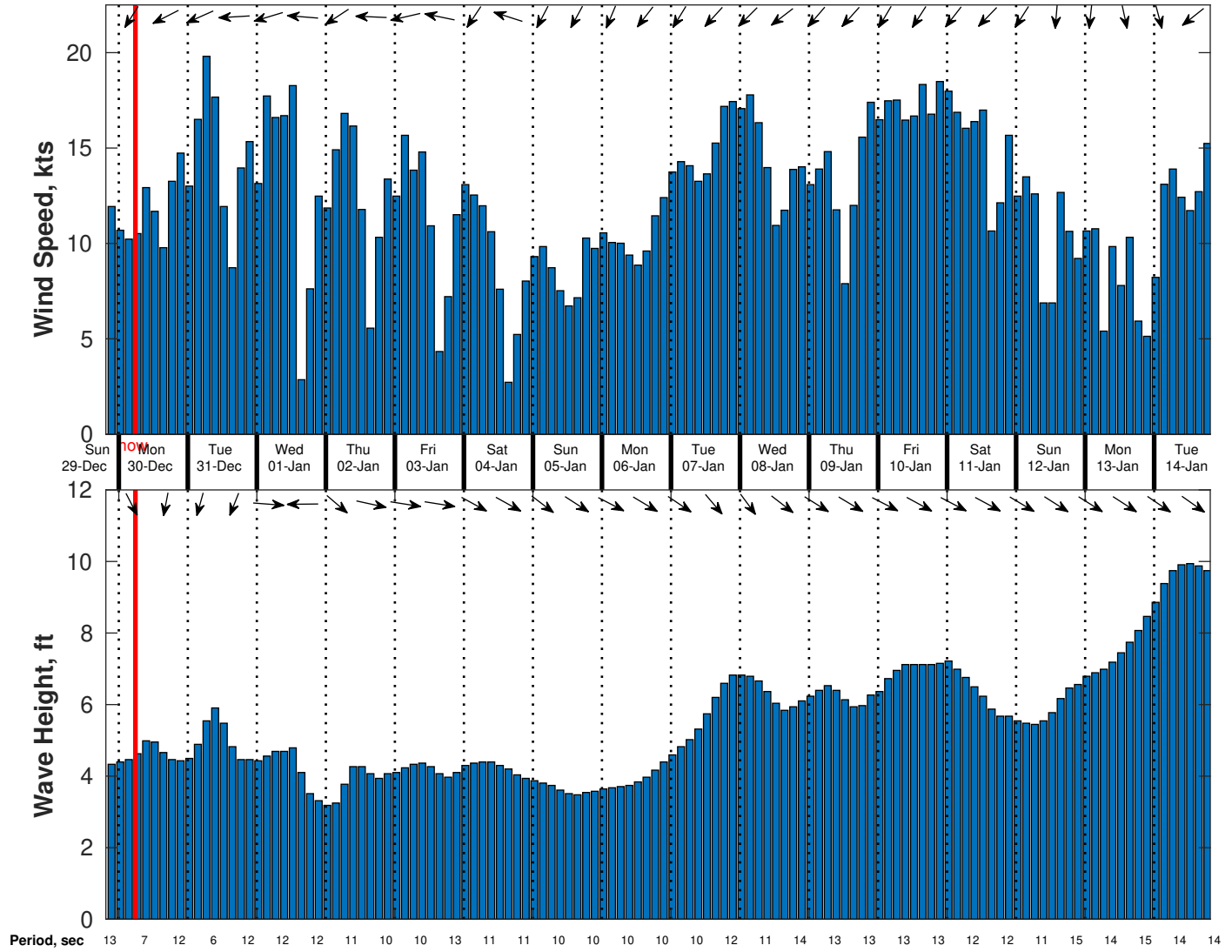
Friday

Winds: E, 10-15 kts.  
Waves: W, 4-5 feet, 9-10 sec.  
No currents available.

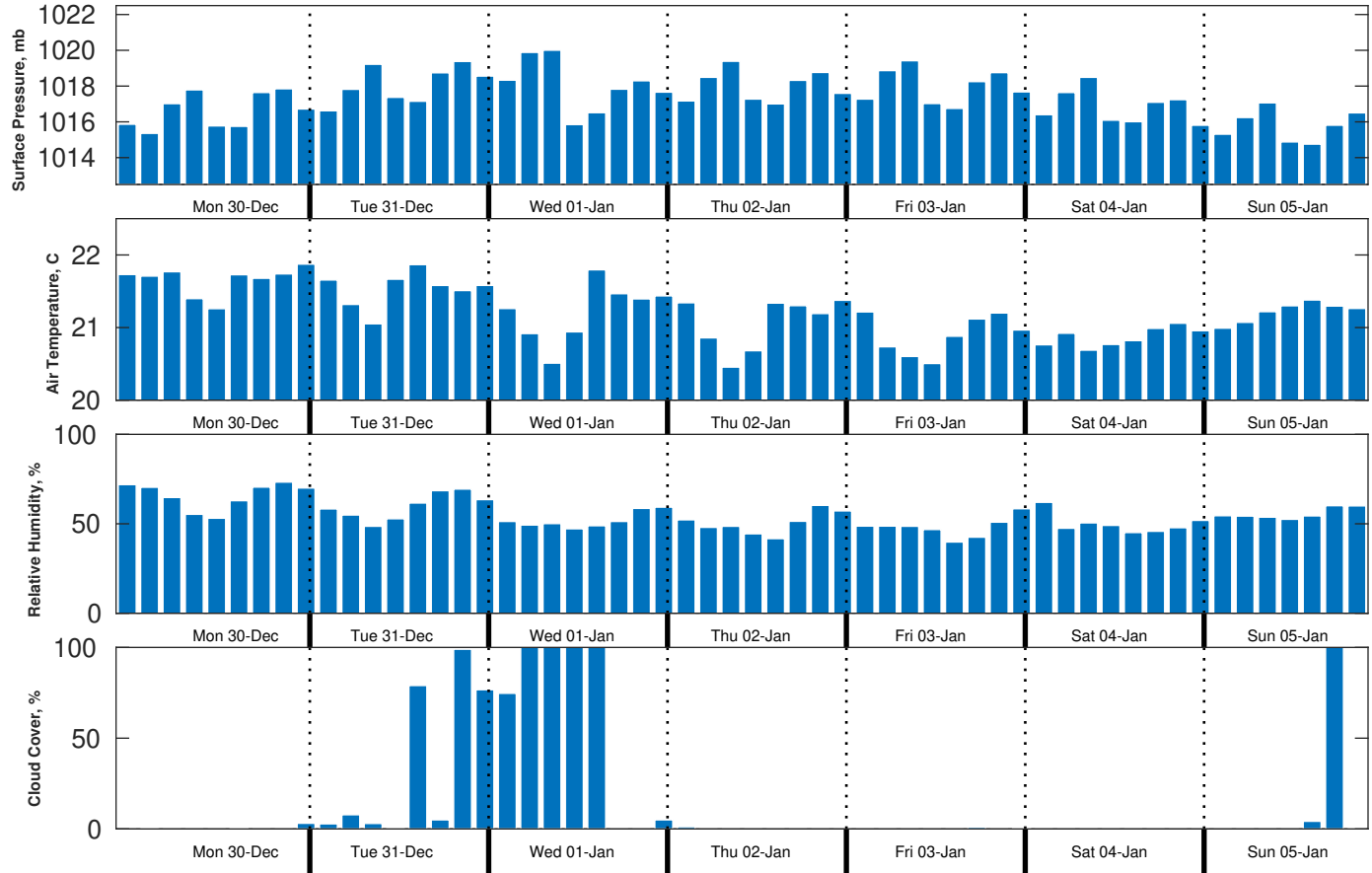
Friday Night

Winds: NE, 10-15 kts.  
Waves: NW, 4-5 feet, 12-13 sec.  
No currents available.

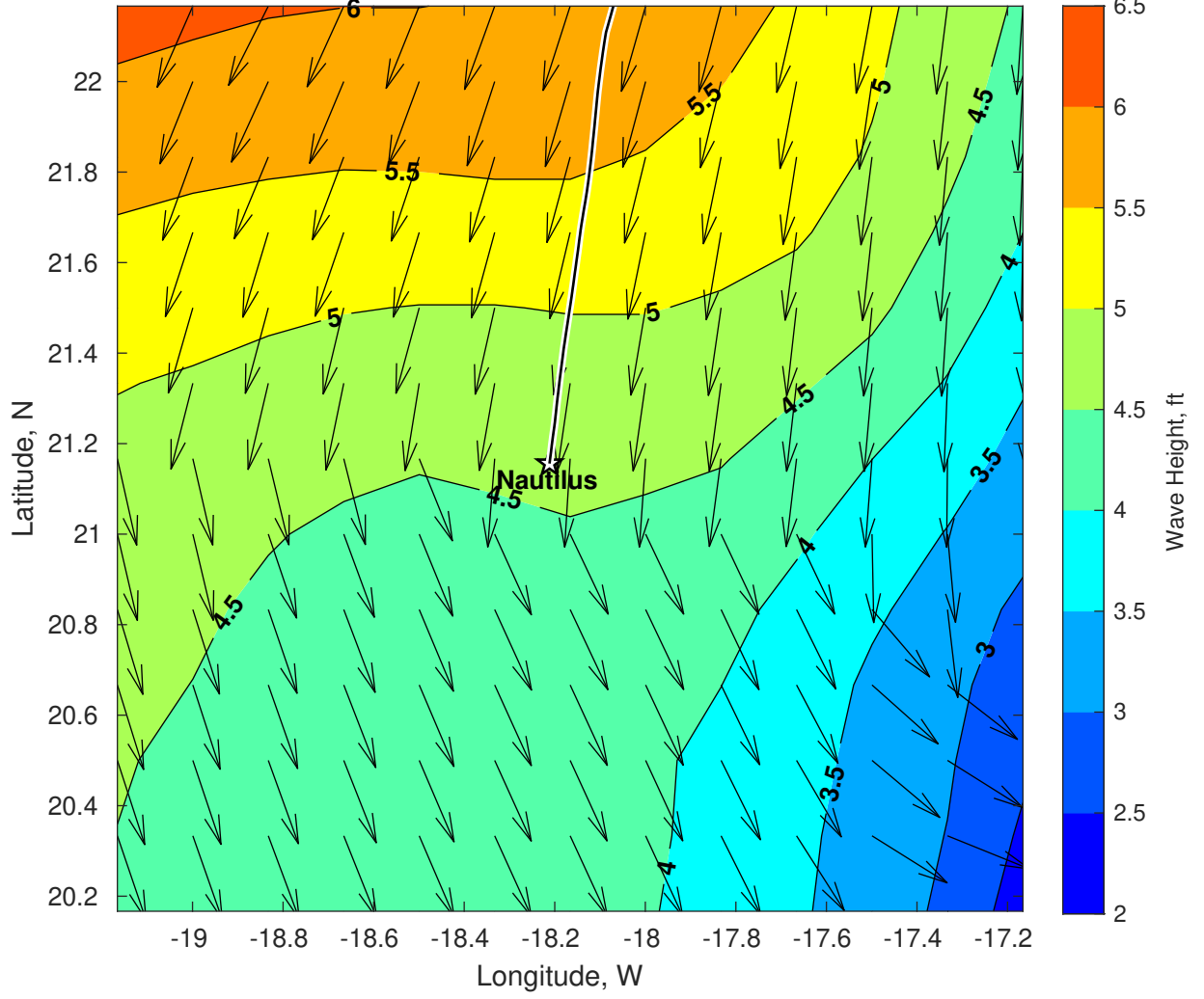
Wind & Wave Forecast for Nautilus from 29-Dec-2024 20:00:00 to 14-Jan-2025 20:00:00



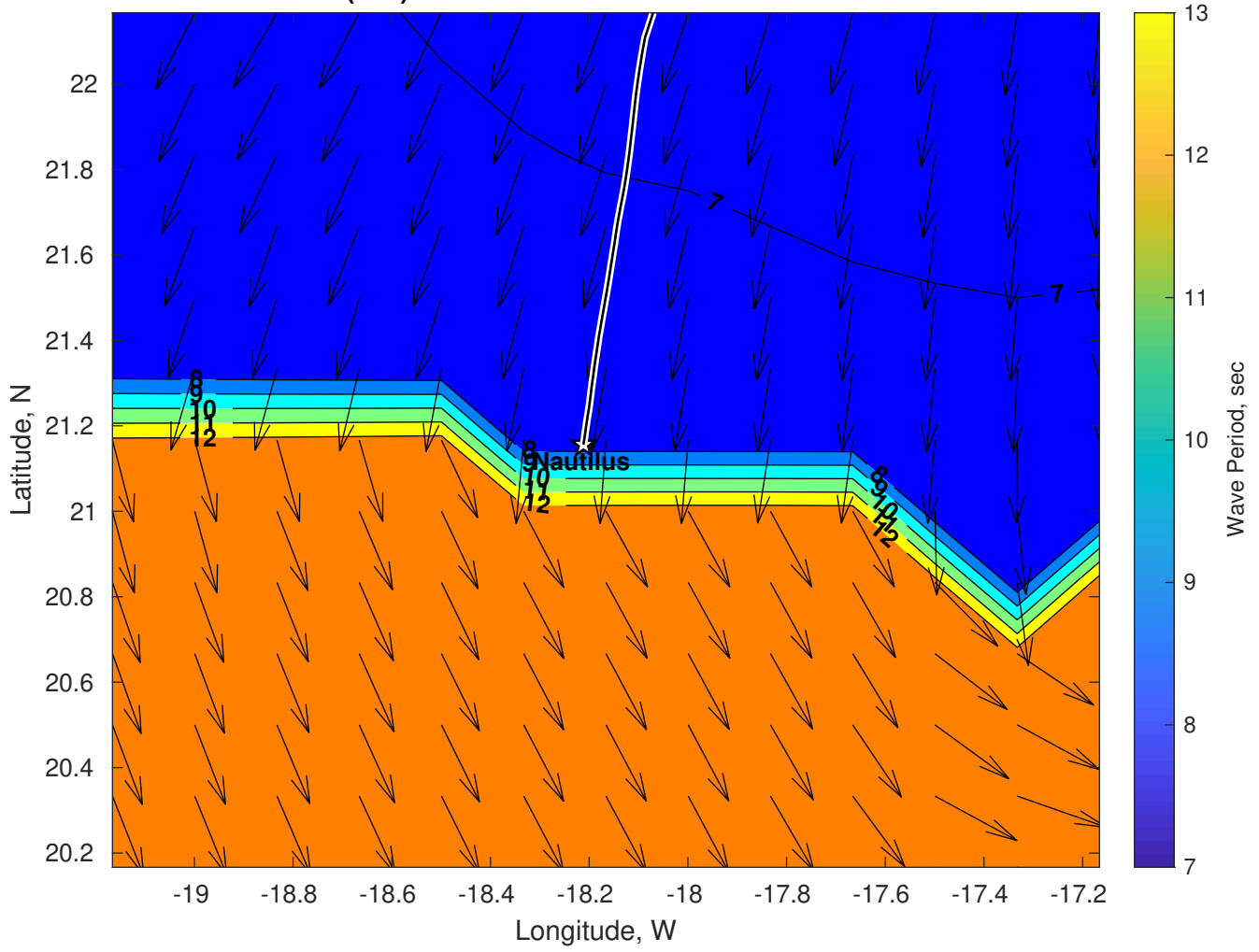
### Met Forecast for Nautilus from 30-Dec-2024 00:00:00 to 06-Jan-2025 00:00:00



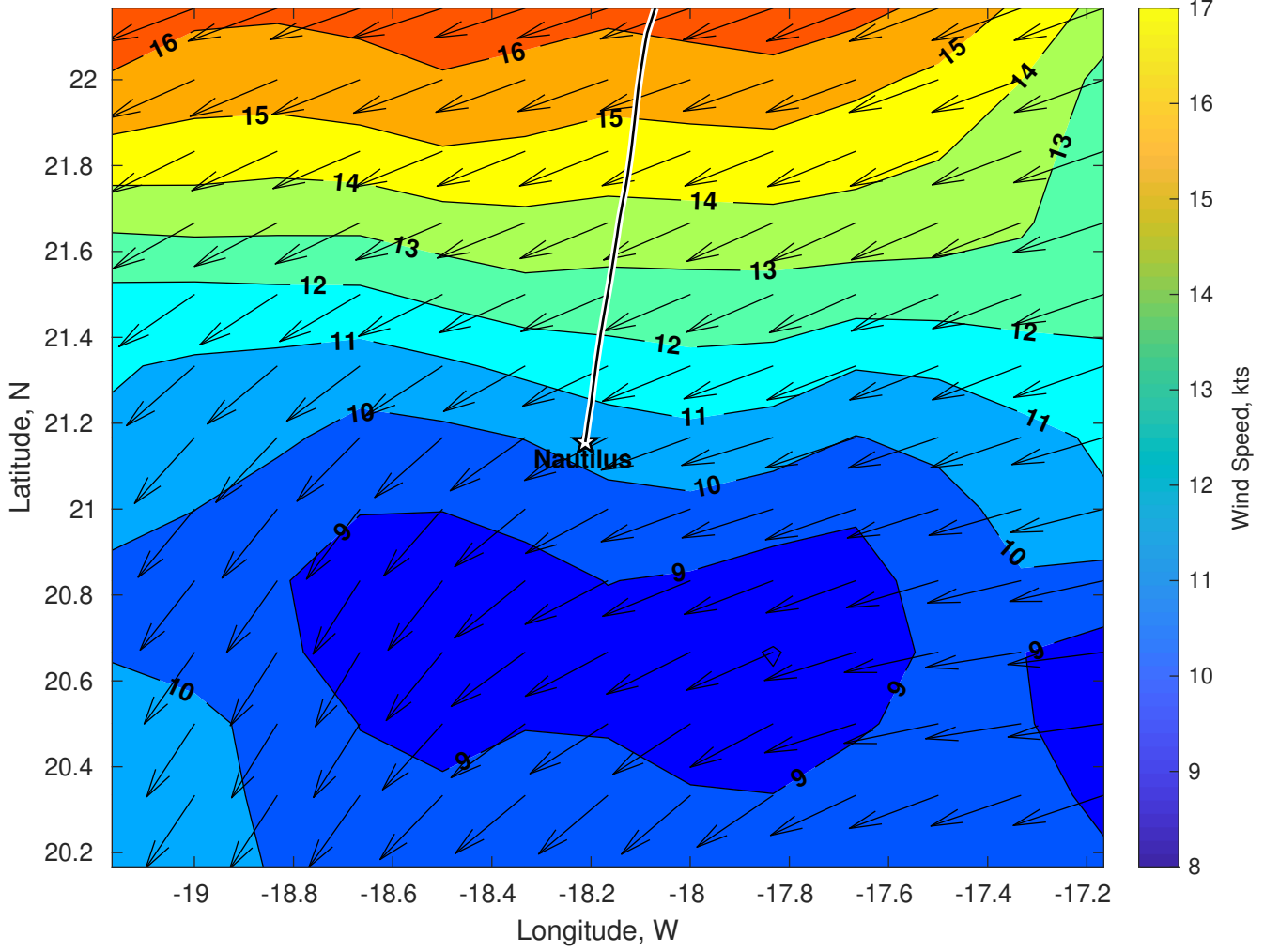
Wave Height (ft) for Nautilus at 30-Dec-2024 09:00:00



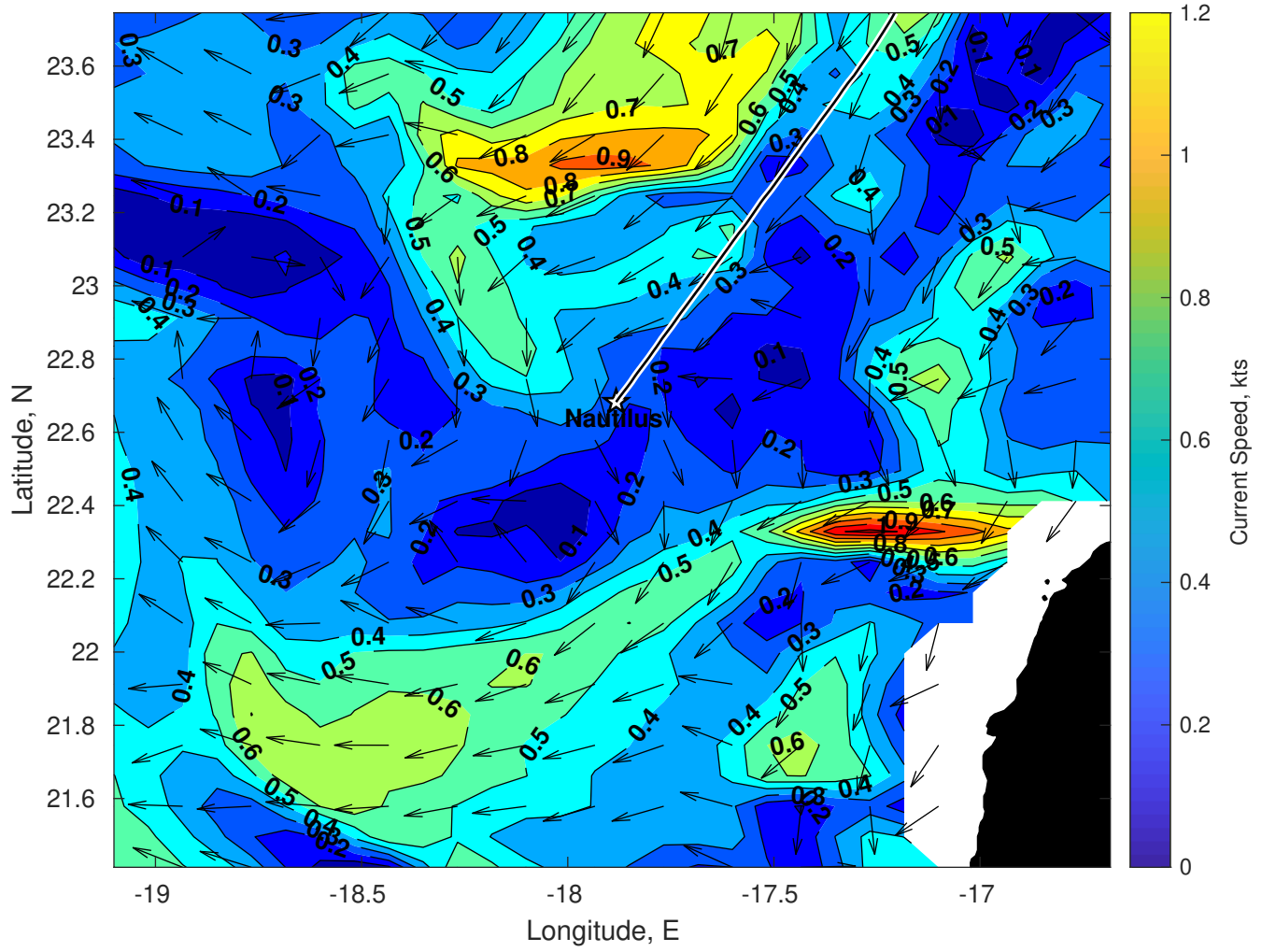
Wave Period (sec) for Nautilus at 30-Dec-2024 09:00:00



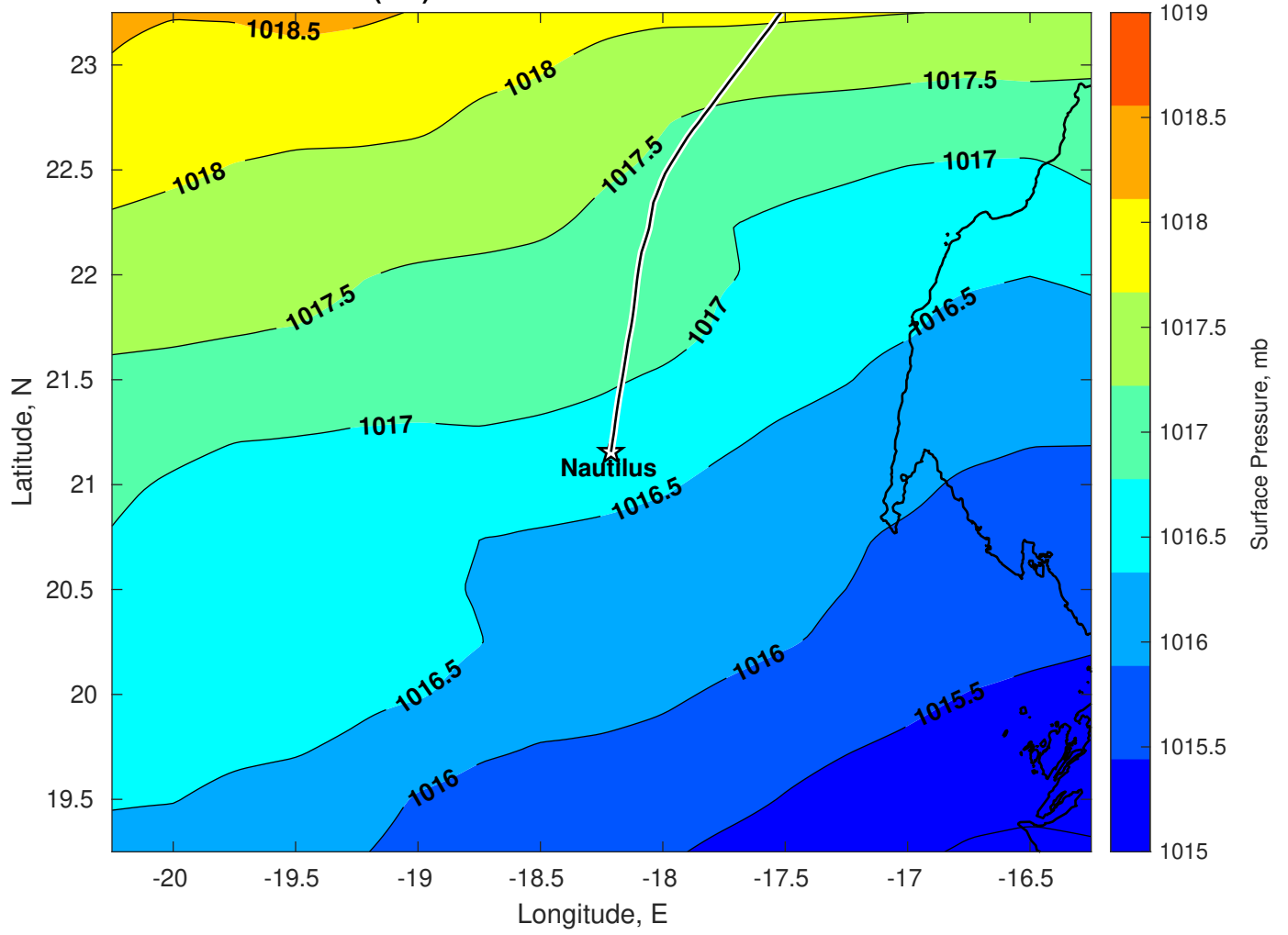
Winds (kts) for Nautilus at 30-Dec-2024 09:00:00



Surface Currents for Nautilus at 29-Dec-2024 00:00:00

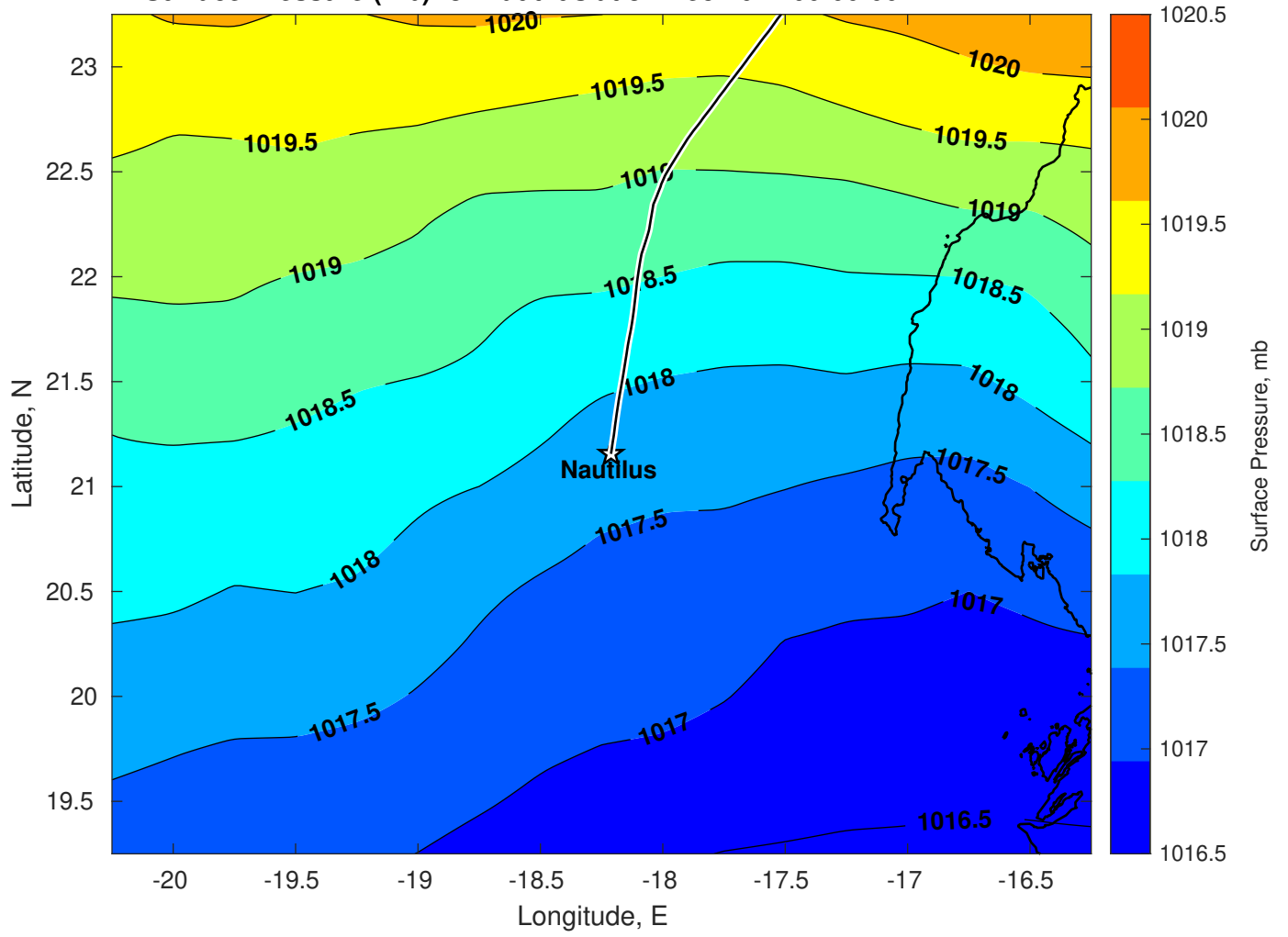


Surface Pressure (mb) for Nautilus at 30-Dec-2024 00:00:00

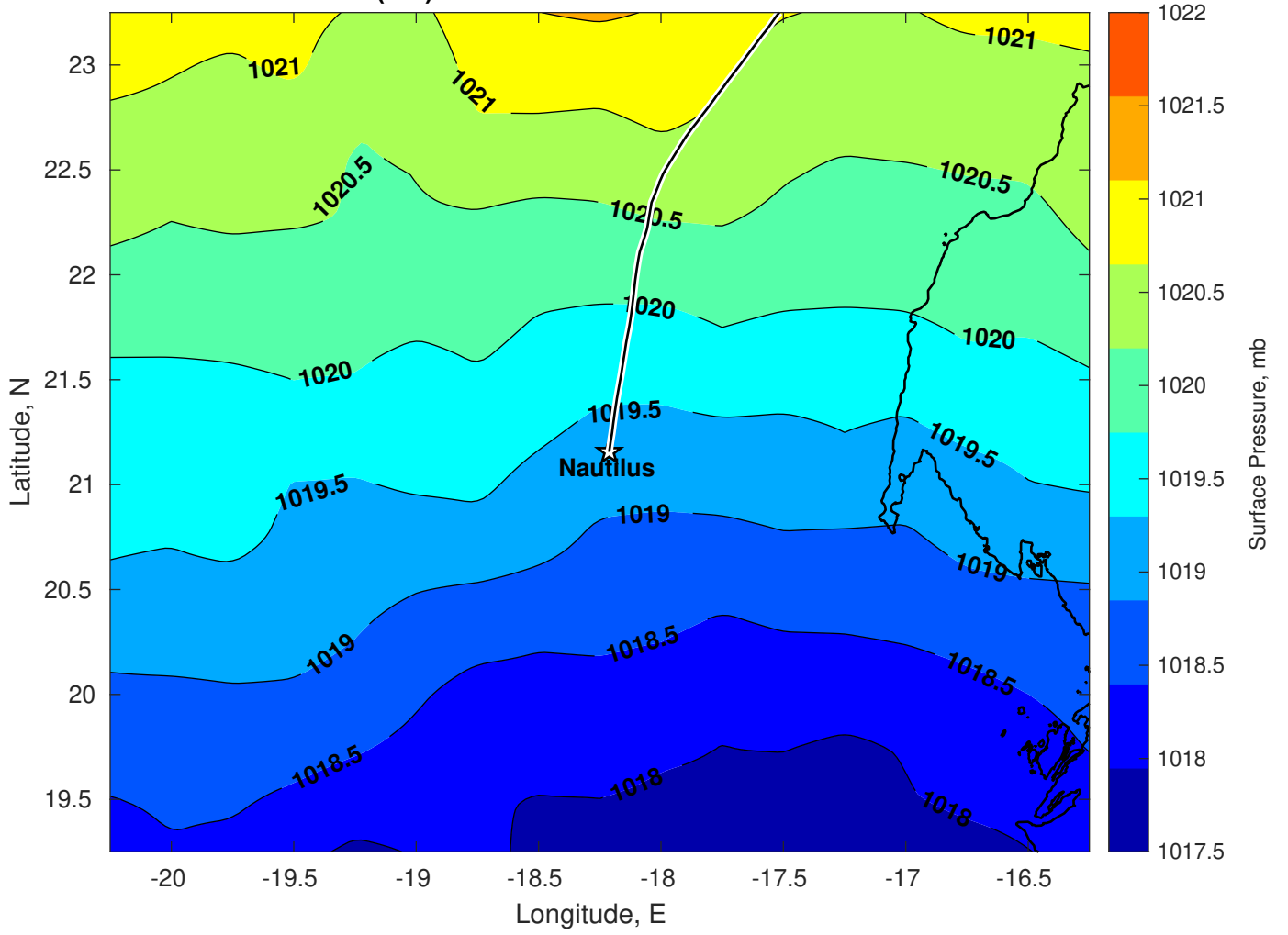




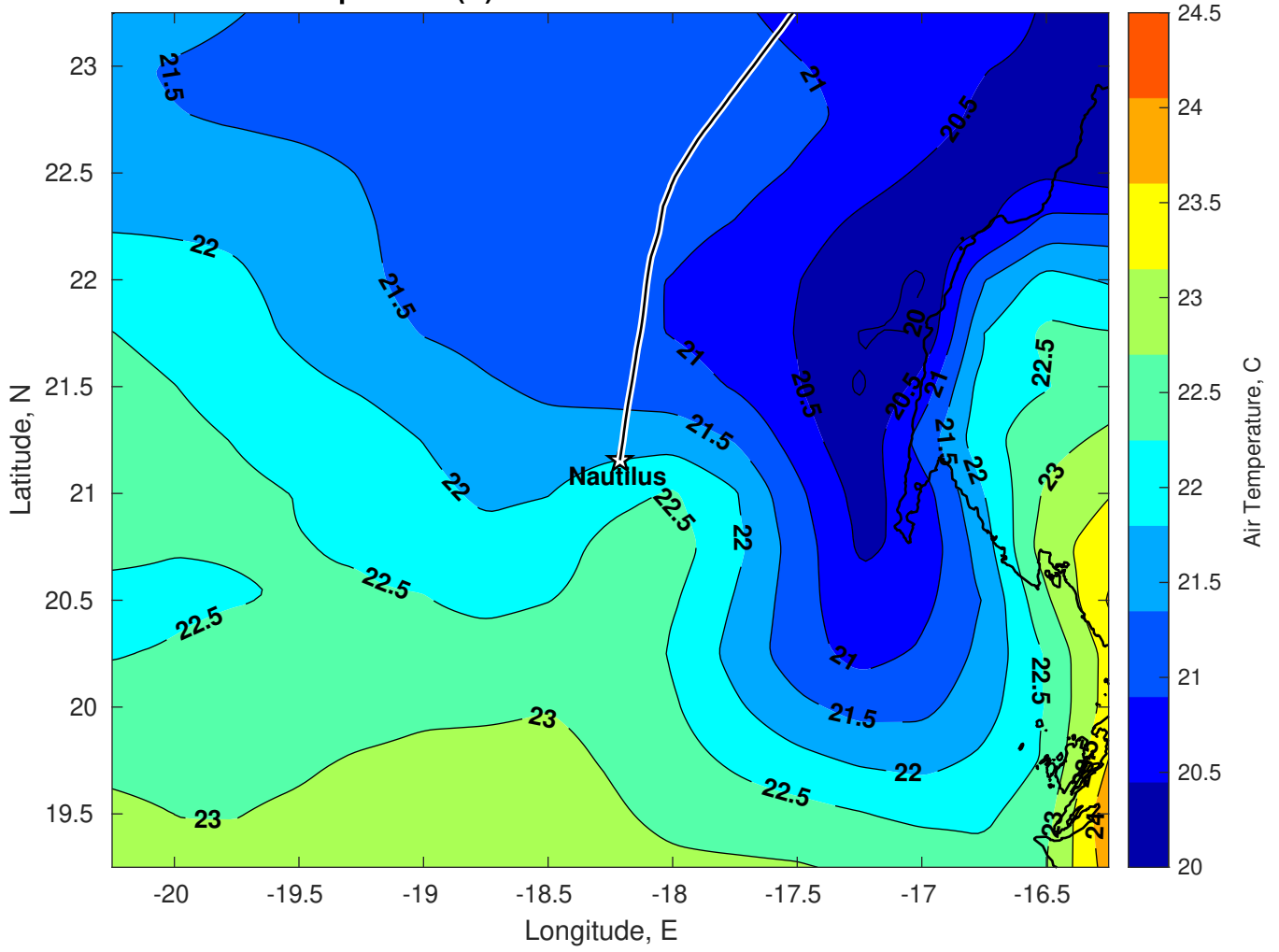
Surface Pressure (mb) for Nautilus at 31-Dec-2024 00:00:00



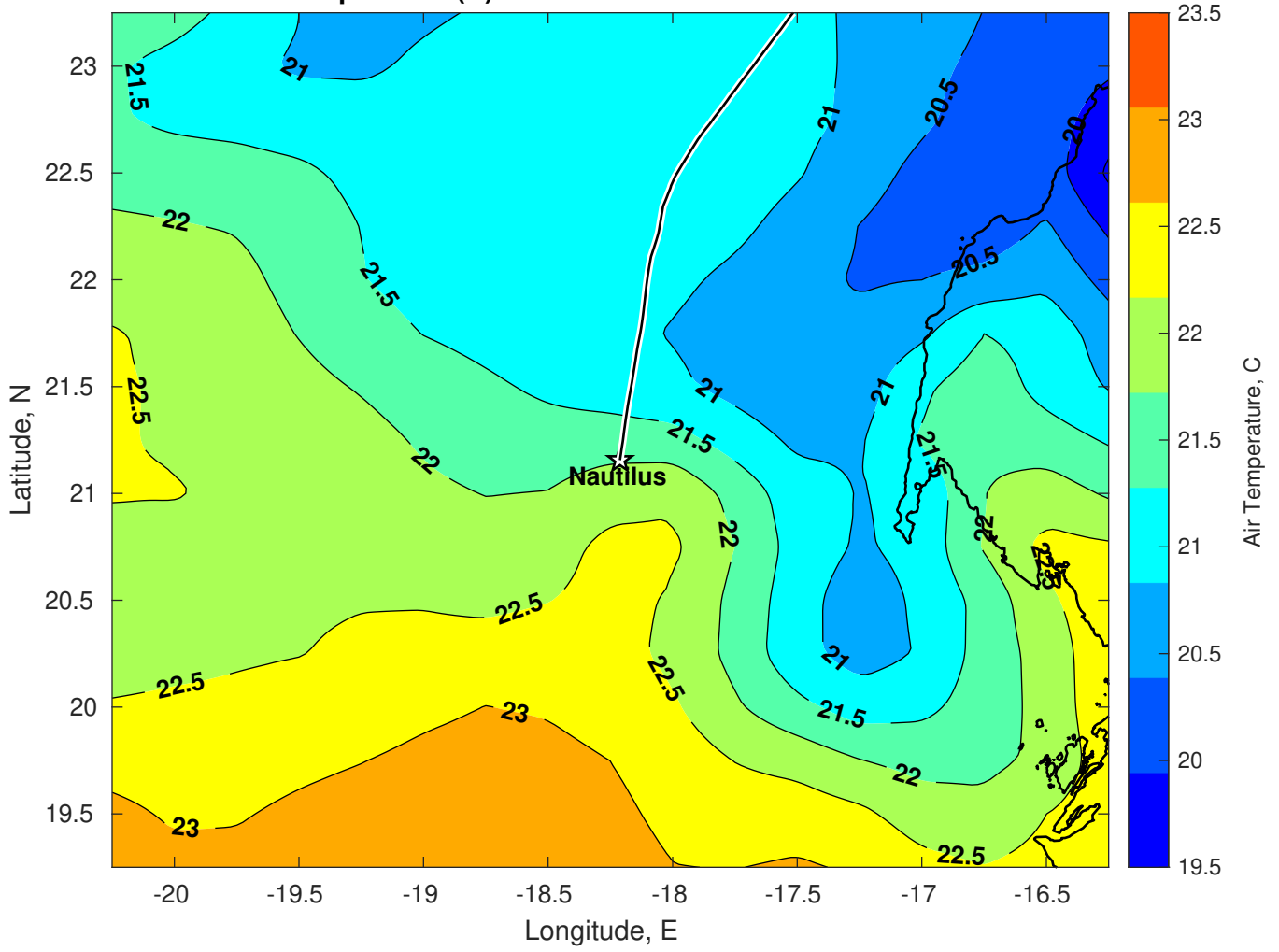
Surface Pressure (mb) for Nautilus at 01-Jan-2025 00:00:00



Air Temperature (C) for Nautilus at 30-Dec-2024



Air Temperature (C) for Nautilus at 30-Dec-2024



Air Temperature (C) for Nautilus at 30-Dec-2024

