
Marine Weather Forecast for Gyre
Forecast valid as of 02-Jan-2025 2100 GMT

All times are local.

Today

Winds: E, 10-15 kts.
Waves: N, 6-7 feet, 10-11 sec.
Currents: E, less than 0.5 knot.

Tonight

Winds: NE, 15-20 kts.
Waves: N, 6-7 feet, 9-10 sec.
Currents: NW, less than 0.5 knot.

Friday

Winds: E, 15-20 kts.
Waves: N, 6-7 feet, 9-10 sec.
Currents: N, less than 0.5 knot.

Friday Night

Winds: E, 15-20 kts.
Waves: N, 6-7 feet, 12-13 sec.
Currents: NW, less than 0.5 knot.

Saturday

Winds: E, 15-20 kts.
Waves: N, 7-8 feet, 13-14 sec.
Currents: NW, less than 0.5 knot.

Saturday Night

Winds: E, 15-20 kts.
Waves: N, 7-8 feet, 12-13 sec.
Currents: NW, 0.5-1 kts.

Sunday

Winds: E, 15-20 kts.
Waves: N, 7-8 feet, 12-13 sec.
Currents: N, 0.5-1 kts.

Sunday Night

Winds: E, 15-20 kts.
Waves: N, 7-8 feet, 13-14 sec.
Currents: N, 0.5-1 kts.

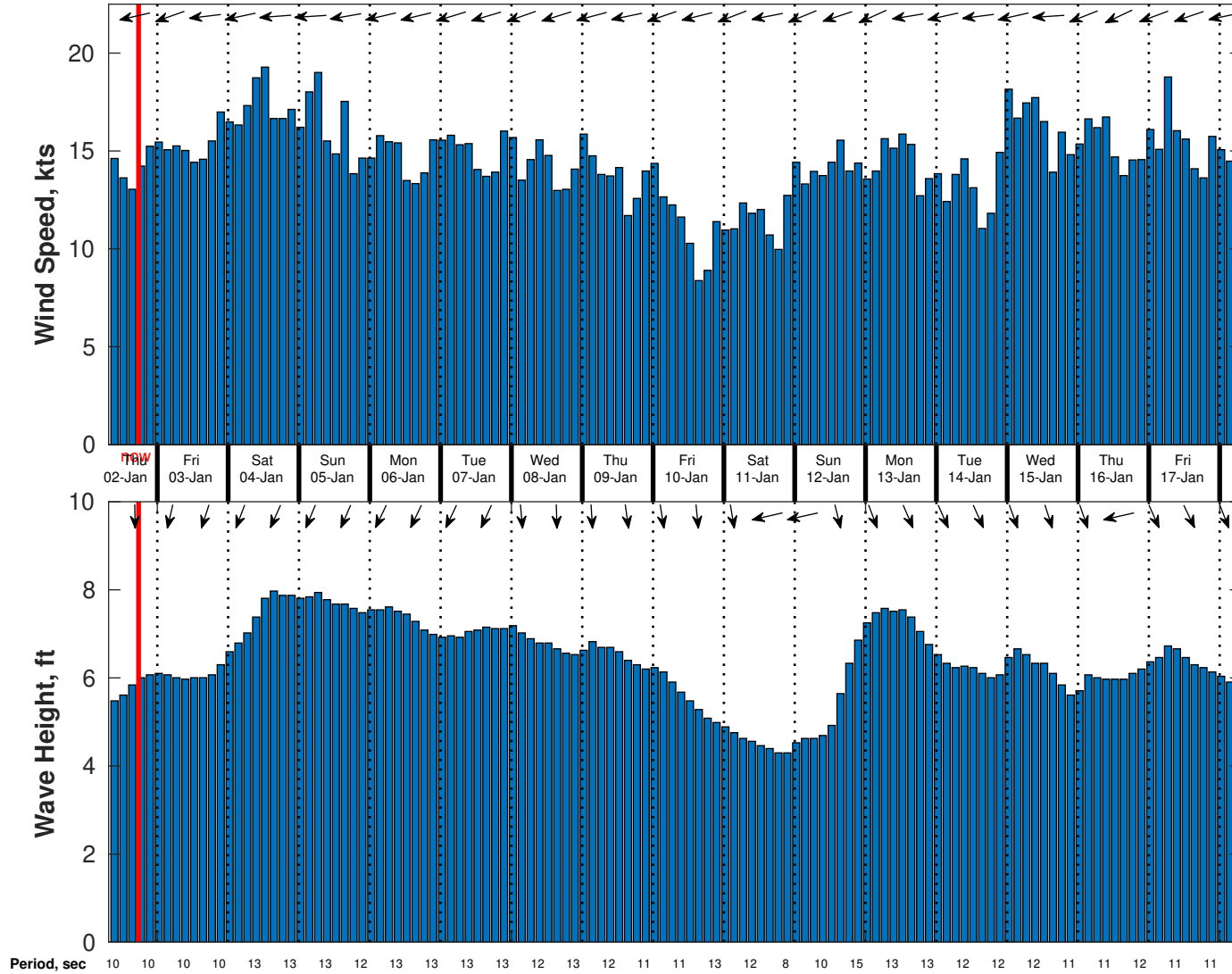
Monday

Winds: E, 15-20 kts.
Waves: N, 7-8 feet, 13-14 sec.
Currents: N, less than 0.5 knot.

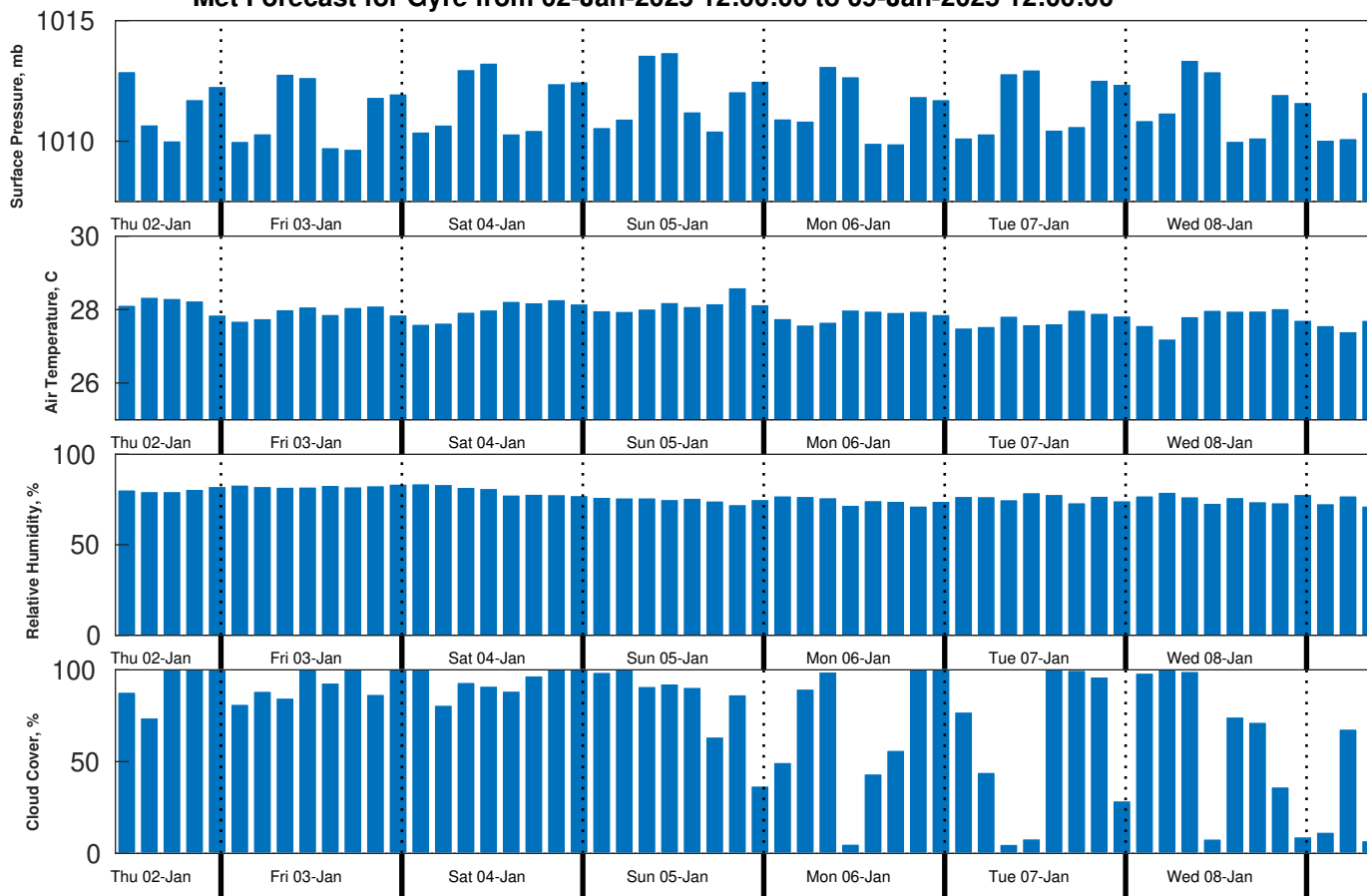
Monday Night

Winds: E, 15-20 kts.
Waves: N, 6-7 feet, 12-13 sec.
Currents: N, less than 0.5 knot.

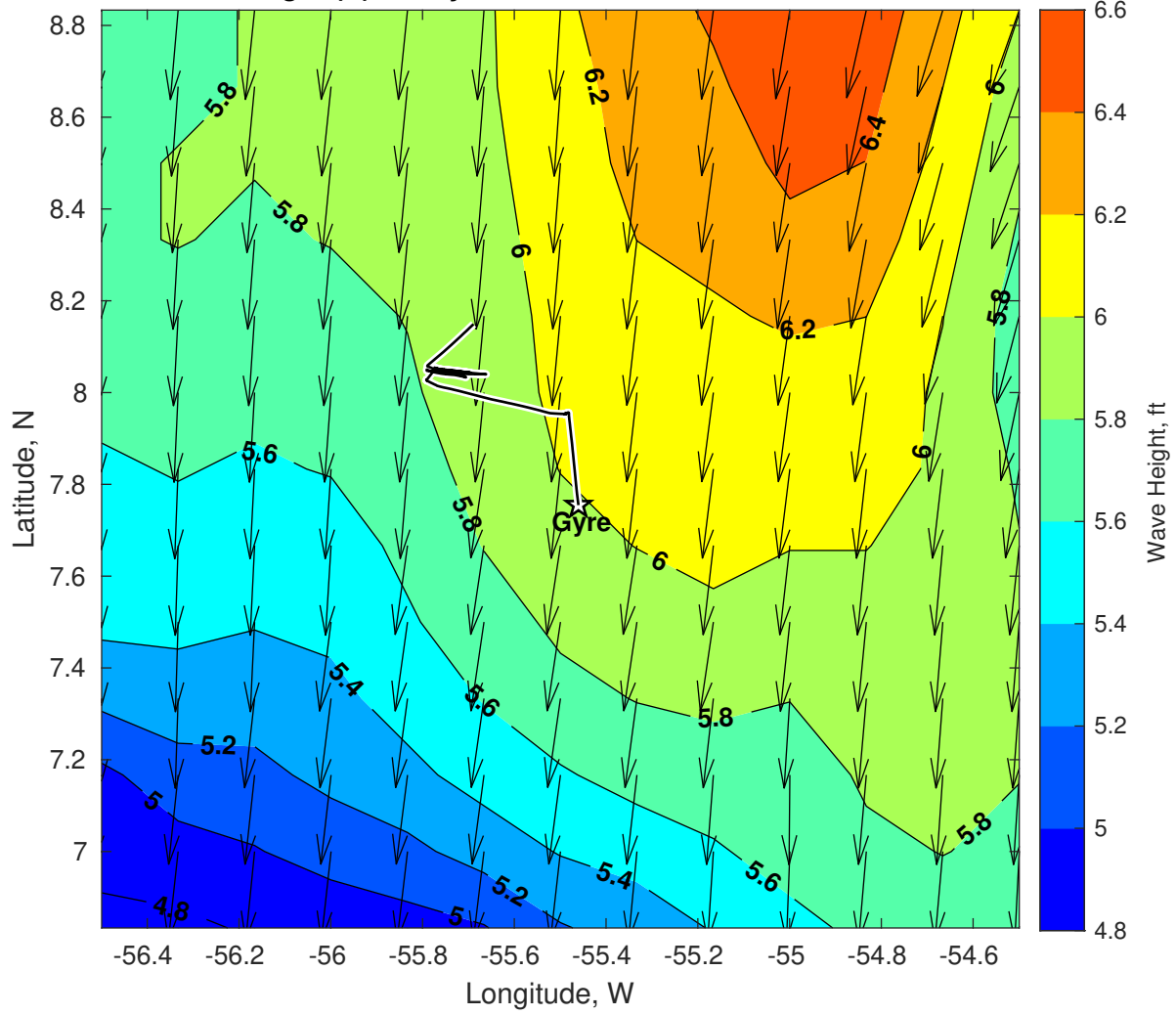
Wind & Wave Forecast for Gyre from 02-Jan-2025 08:00:00 to 18-Jan-2025 08:00:00



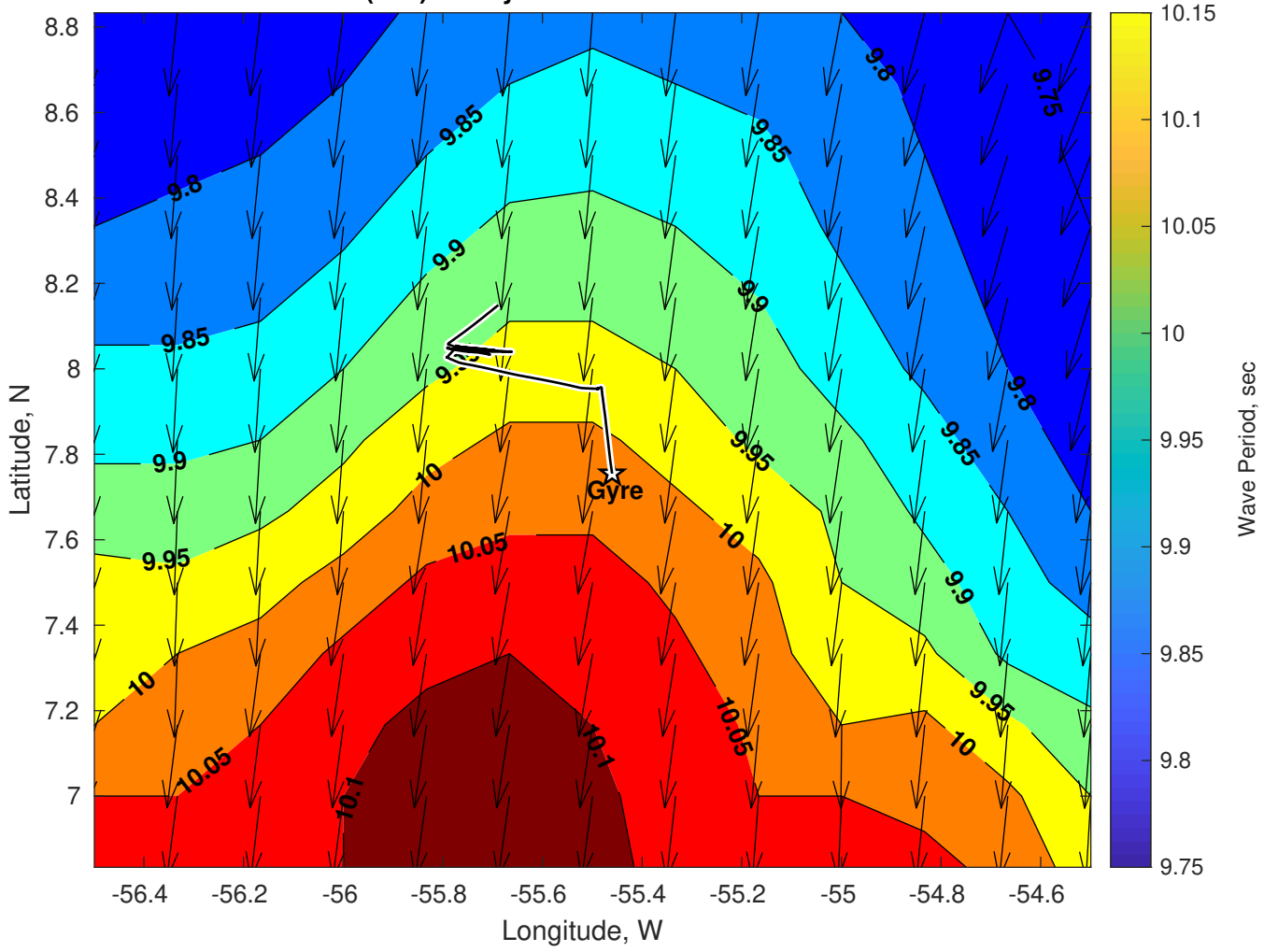
Met Forecast for Gyre from 02-Jan-2025 12:00:00 to 09-Jan-2025 12:00:00



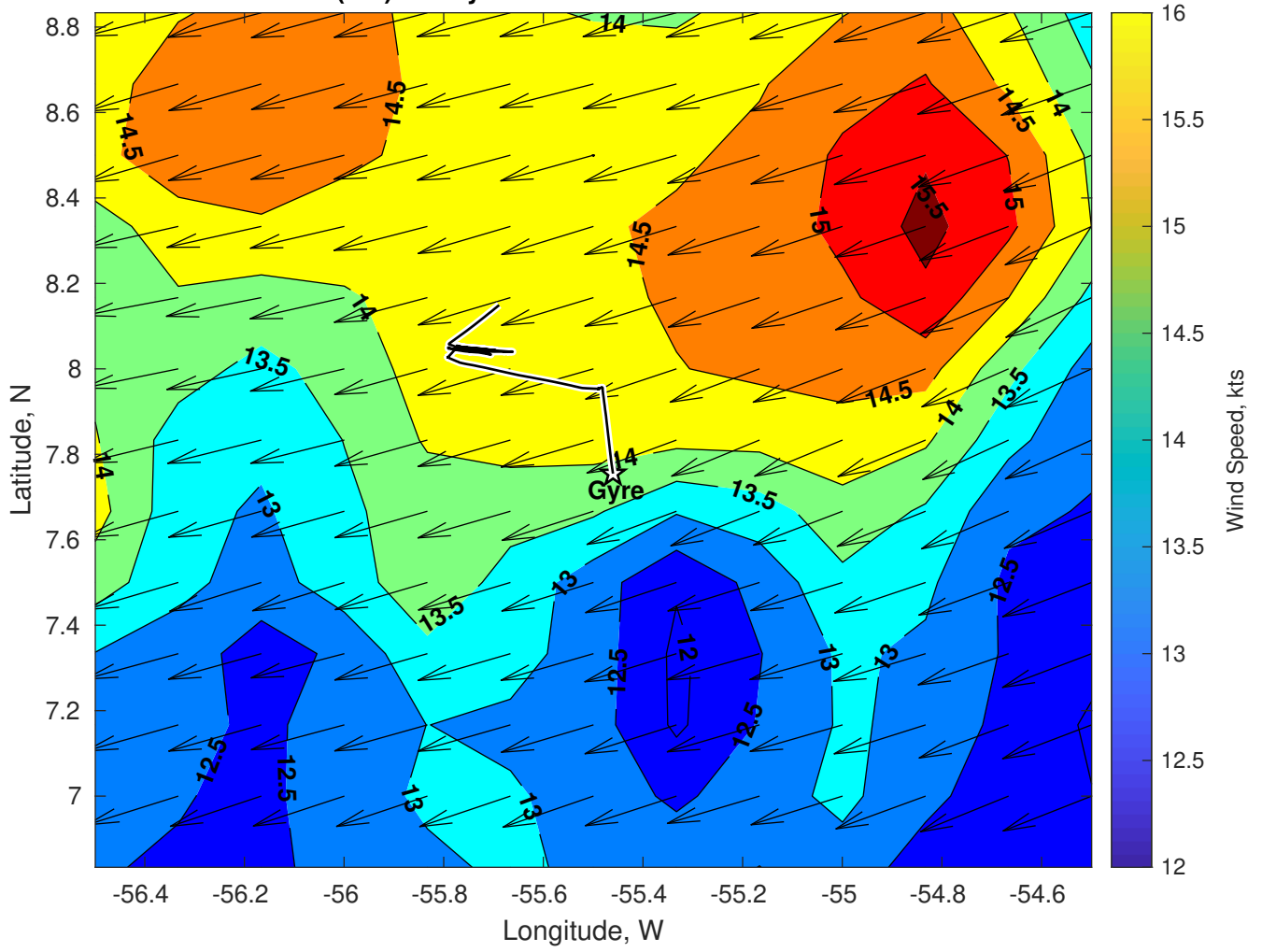
Wave Height (ft) for Gyre at 02-Jan-2025 21:00:00



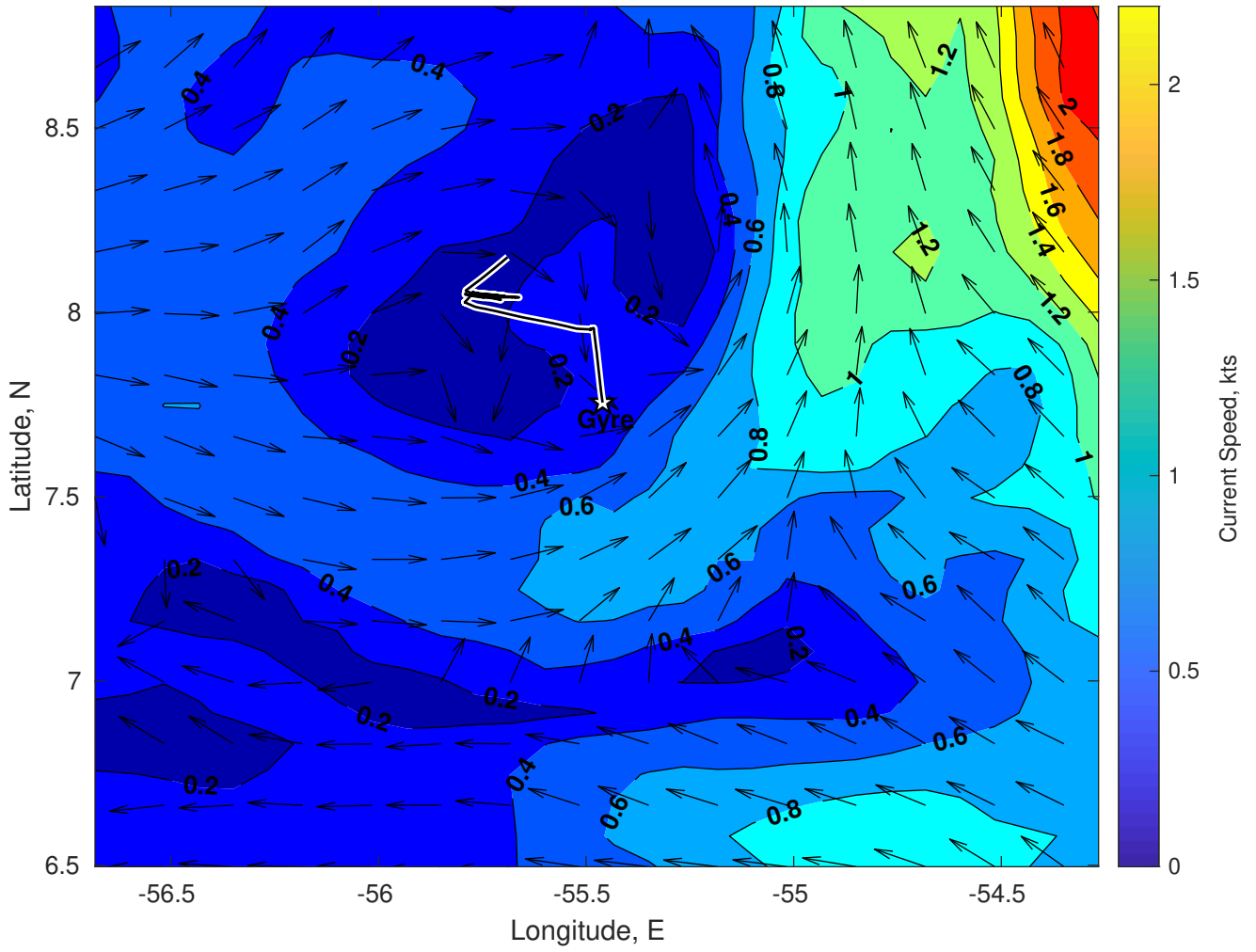
Wave Period (sec) for Gyre at 02-Jan-2025 21:00:00



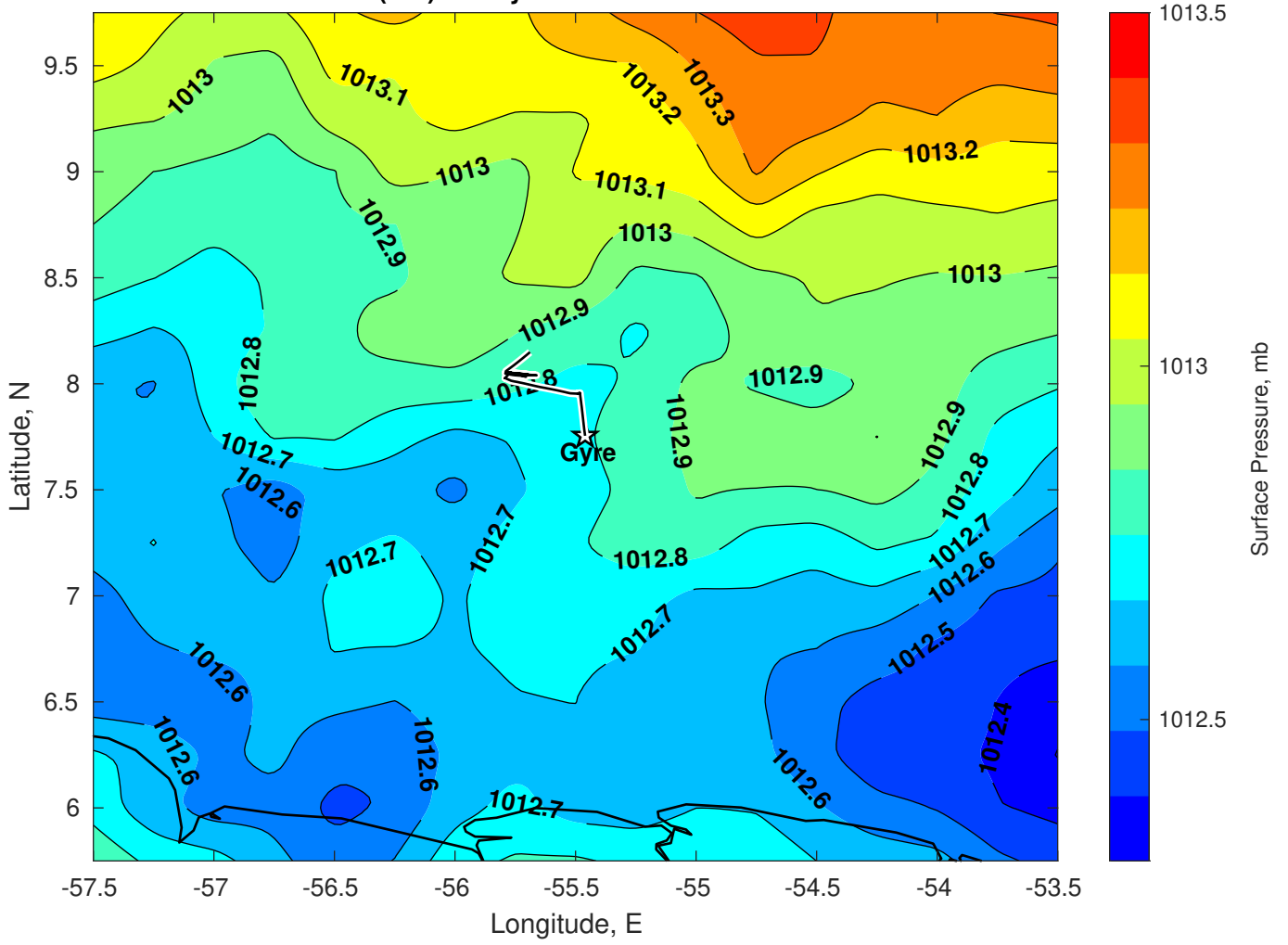
Winds (kts) for Gyre at 02-Jan-2025 21:00:00



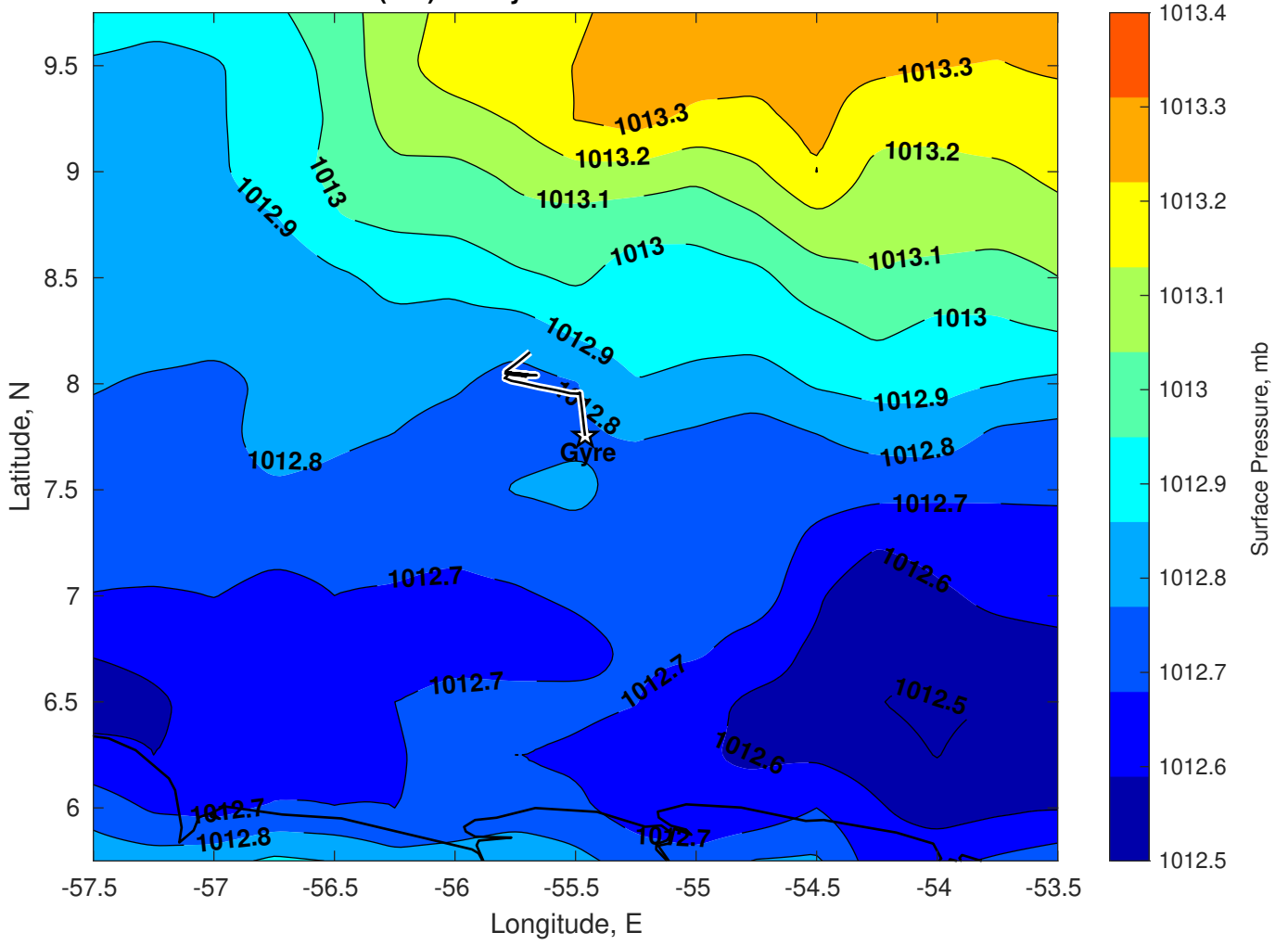
Surface Currents for Gyre at 02-Jan-2025 00:00:00



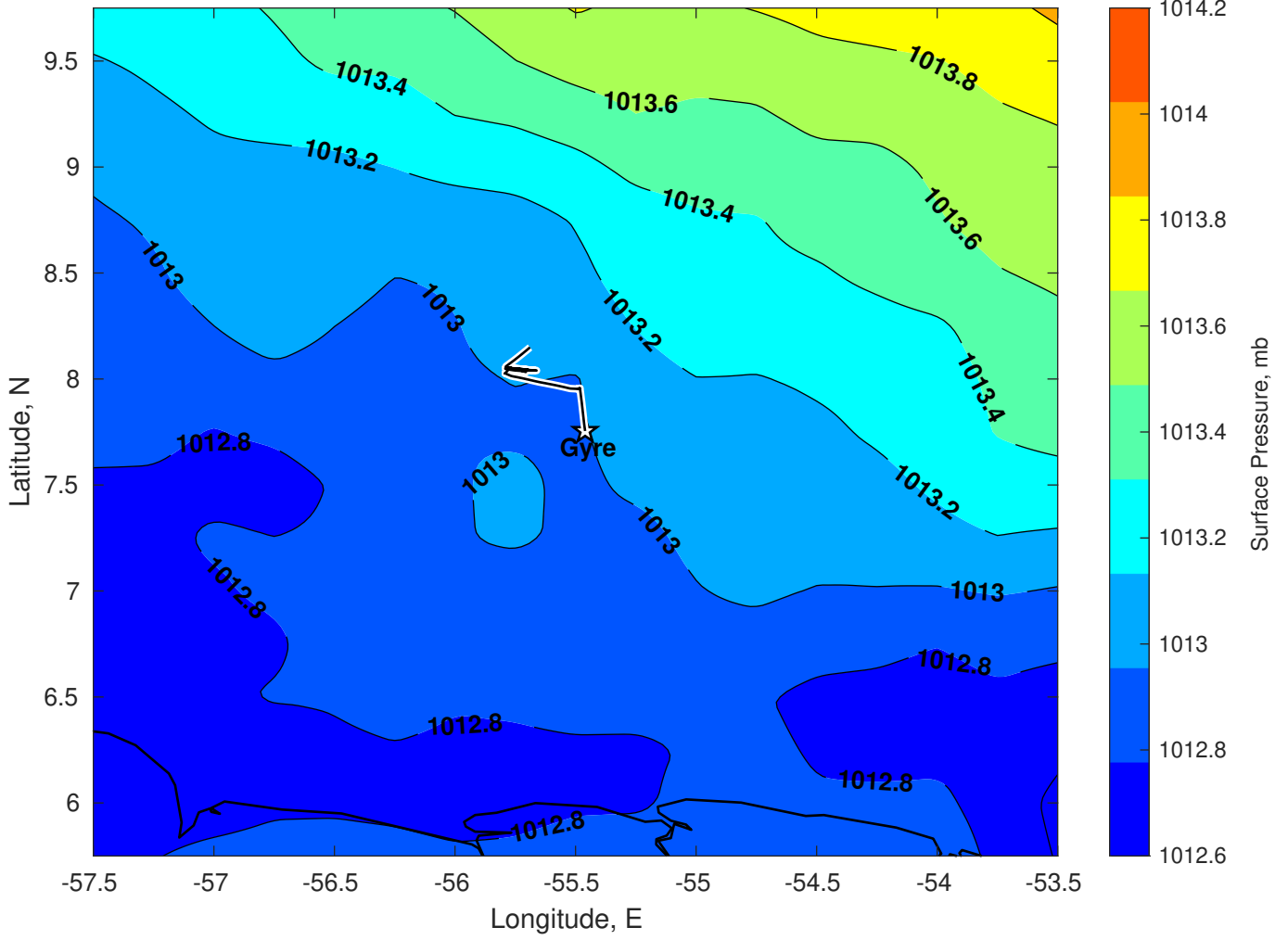
Surface Pressure (mb) for Gyre at 02-Jan-2025 12:00:00



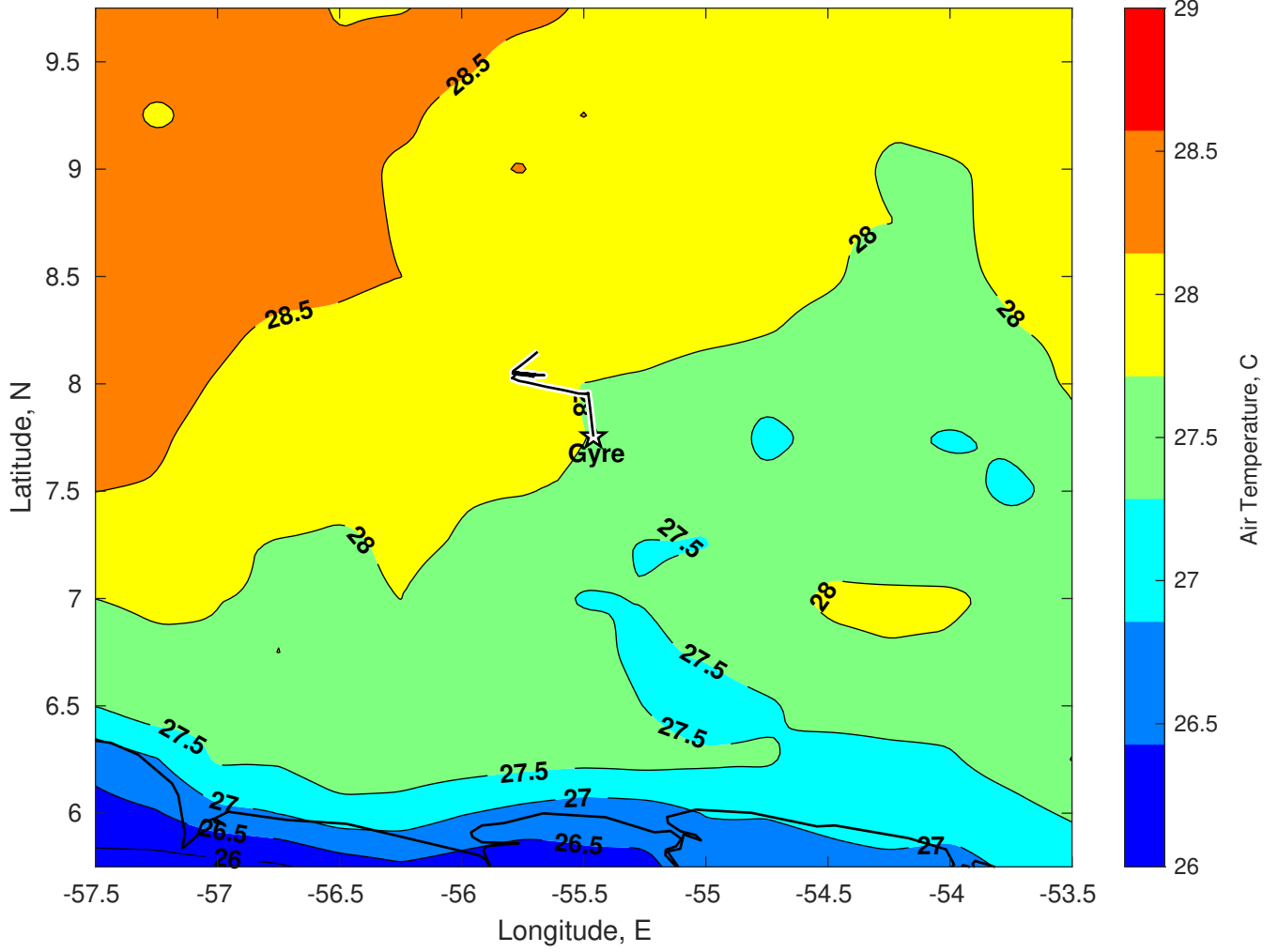
Surface Pressure (mb) for Gyre at 03-Jan-2025 12:00:00



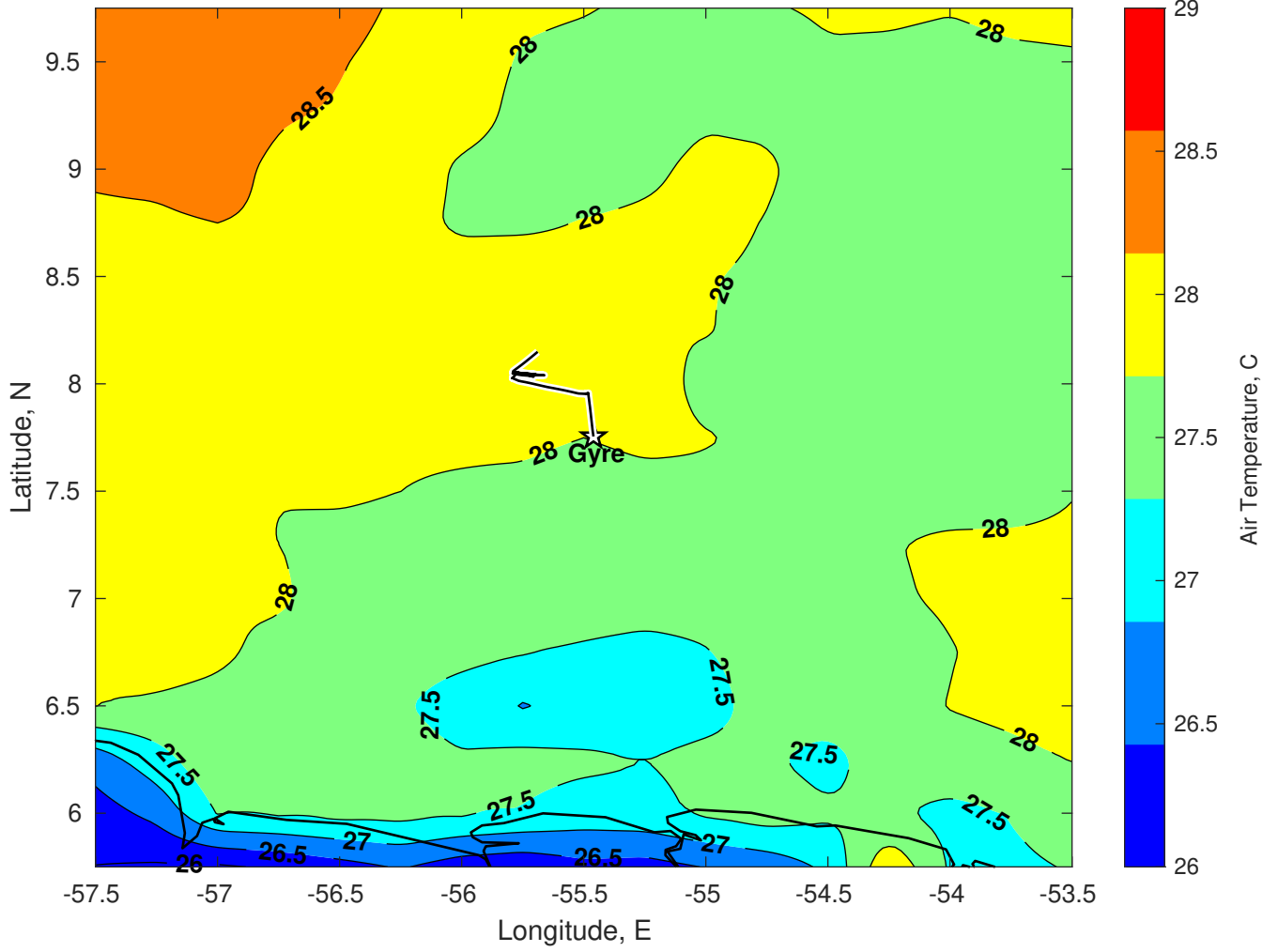
Surface Pressure (mb) for Gyre at 04-Jan-2025 12:00:00



Air Temperature (C) for Gyre at 02-Jan-2025



Air Temperature (C) for Gyre at 02-Jan-2025



Air Temperature (C) for Gyre at 02-Jan-2025

