
Marine Weather Forecast for Nautilus
Forecast valid as of 02-Jan-2025 2100 GMT

All times are local.

Tonight

Winds: N, 10-15 kts.
Waves: N, 4-5 feet, 13-14 sec.
Currents: NW, 0.5-1 kts.

Friday

Winds: N, 10-15 kts.
Waves: N, 3-4 feet, 11-12 sec.
Currents: NW, 0.5-1 kts.

Friday Night

Winds: NE, 10-15 kts.
Waves: N, 4-5 feet, 12-13 sec.
Currents: NW, less than 0.5 knot.

Saturday

Winds: N, 15-20 kts.
Waves: NW, 4-5 feet, 12-13 sec.
Currents: NW, 0.5-1 kts.

Saturday Night

Winds: NE, 10-15 kts.
Waves: N, 4-5 feet, 11-12 sec.
Currents: NW, 0.5-1 kts.

Sunday

Winds: N, 15-20 kts.
Waves: NW, 5-6 feet, 11-12 sec.
Currents: NW, less than 0.5 knot.

Sunday Night

Winds: NE, 15-20 kts.
Waves: NW, 4-5 feet, 12-13 sec.
Currents: NW, less than 0.5 knot.

Monday

Winds: N, 10-15 kts.
Waves: W, 4-5 feet, 10-11 sec.
Currents: W, less than 0.5 knot.

Monday Night

Winds: NE, 15-20 kts.
Waves: N, 5-6 feet, 6-7 sec.
Currents: W, less than 0.5 knot.

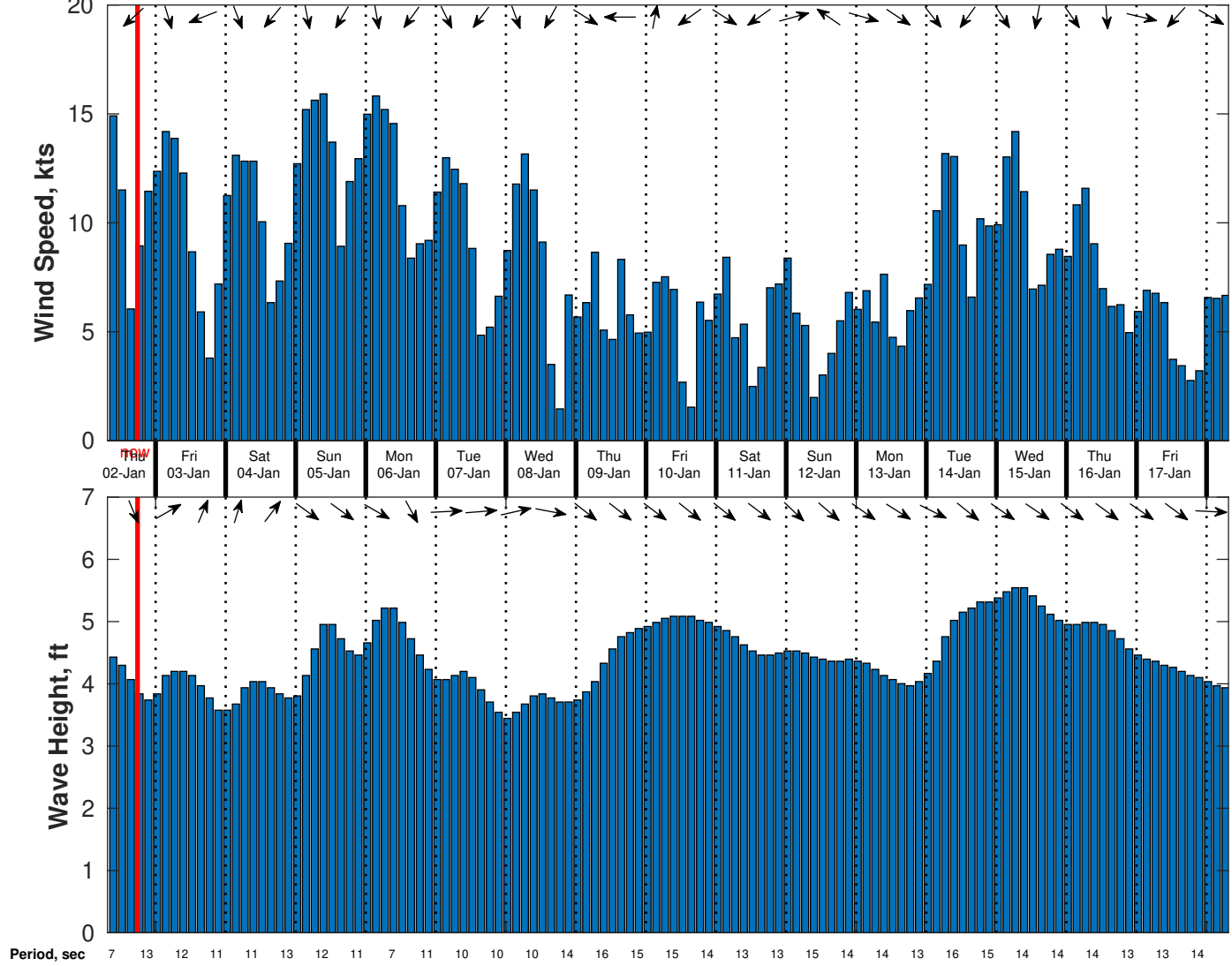
Tuesday

Winds: N, 10-15 kts.
Waves: NW, 3-4 feet, 9-10 sec.
Currents: W, less than 0.5 knot.

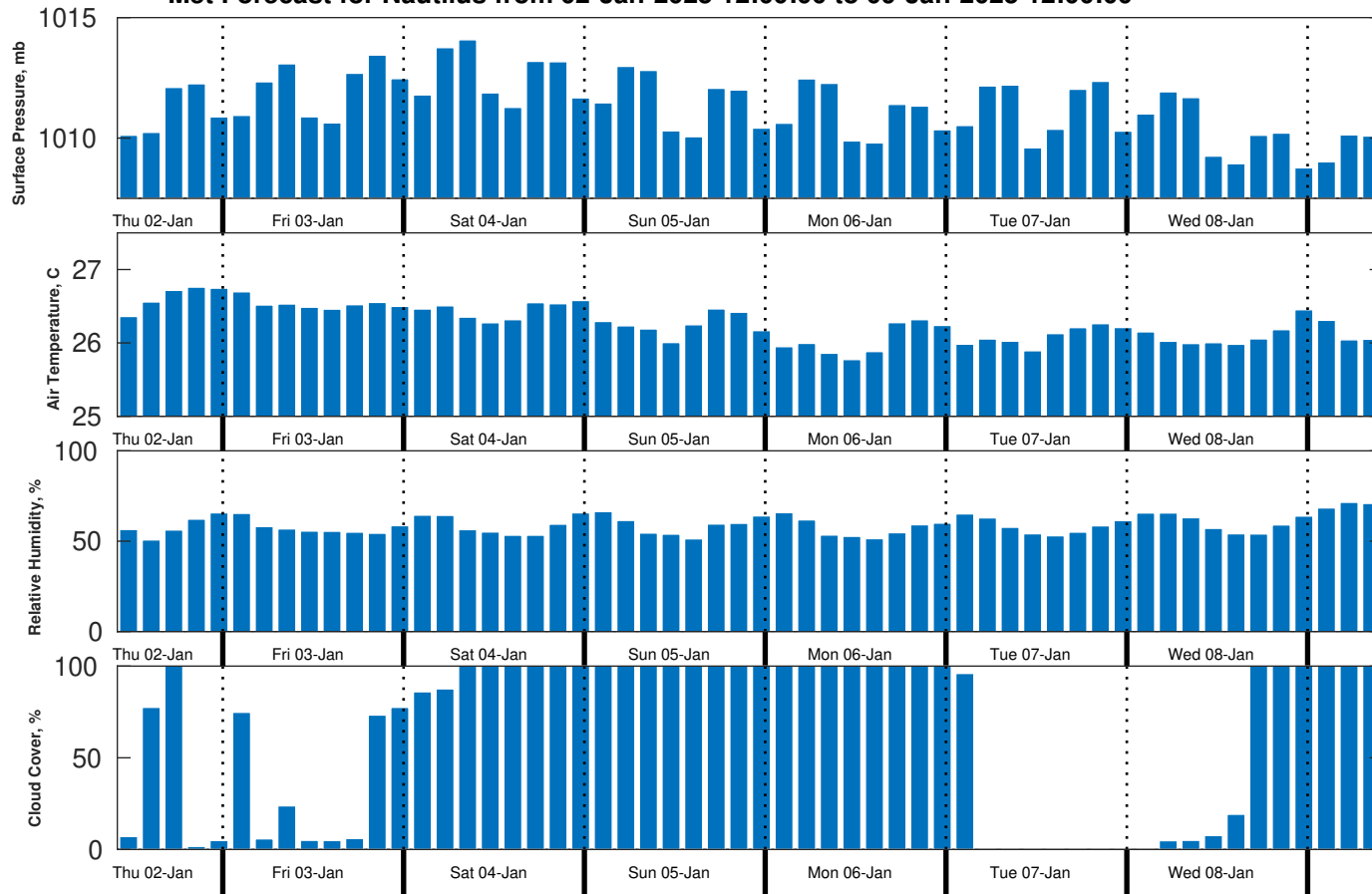
Tuesday Night

Winds: NE, 10-15 kts.
Waves: W, 4-5 feet, 10-11 sec.

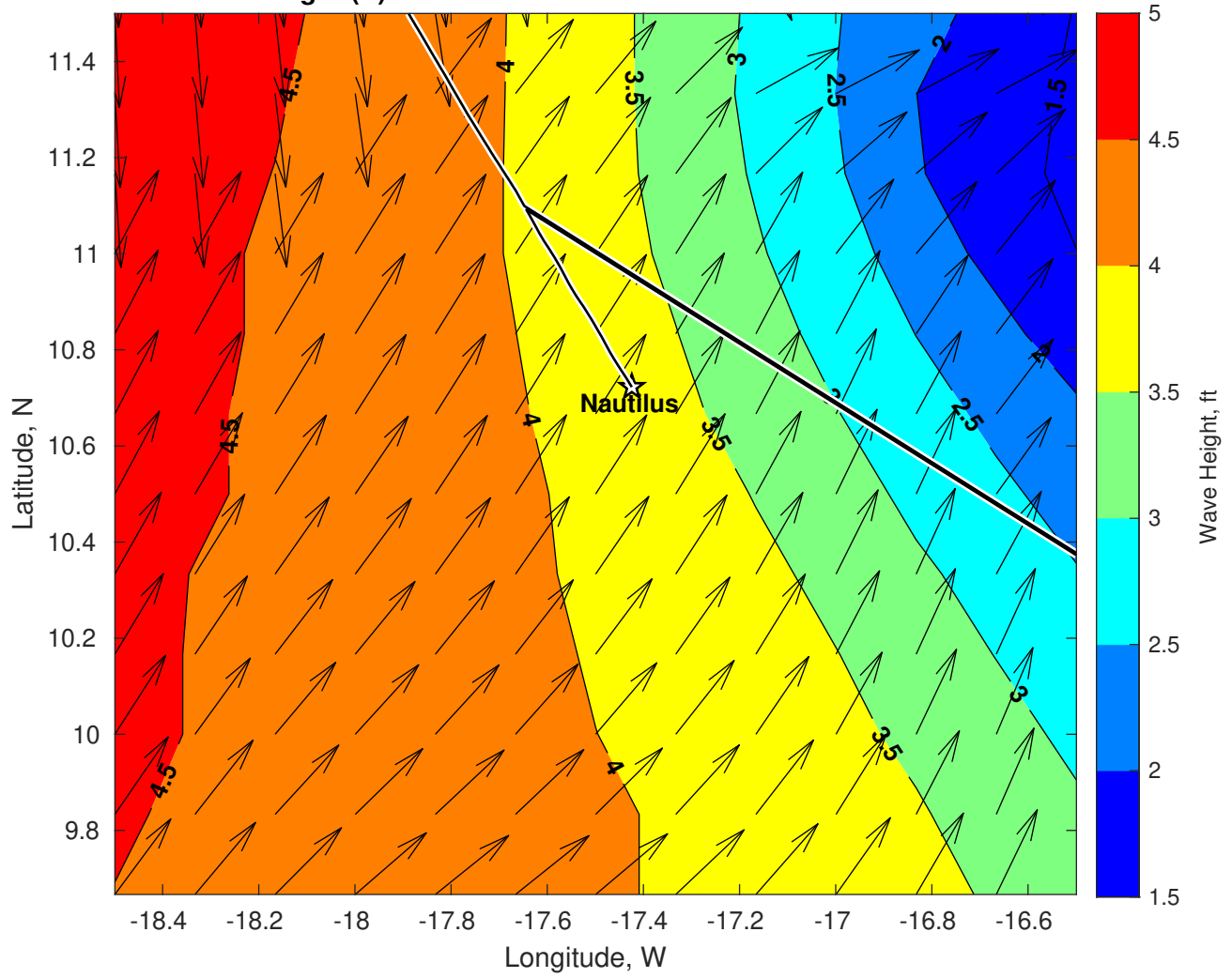
Wind & Wave Forecast for Nautilus from 02-Jan-2025 08:00:00 to 18-Jan-2025 08:00:00



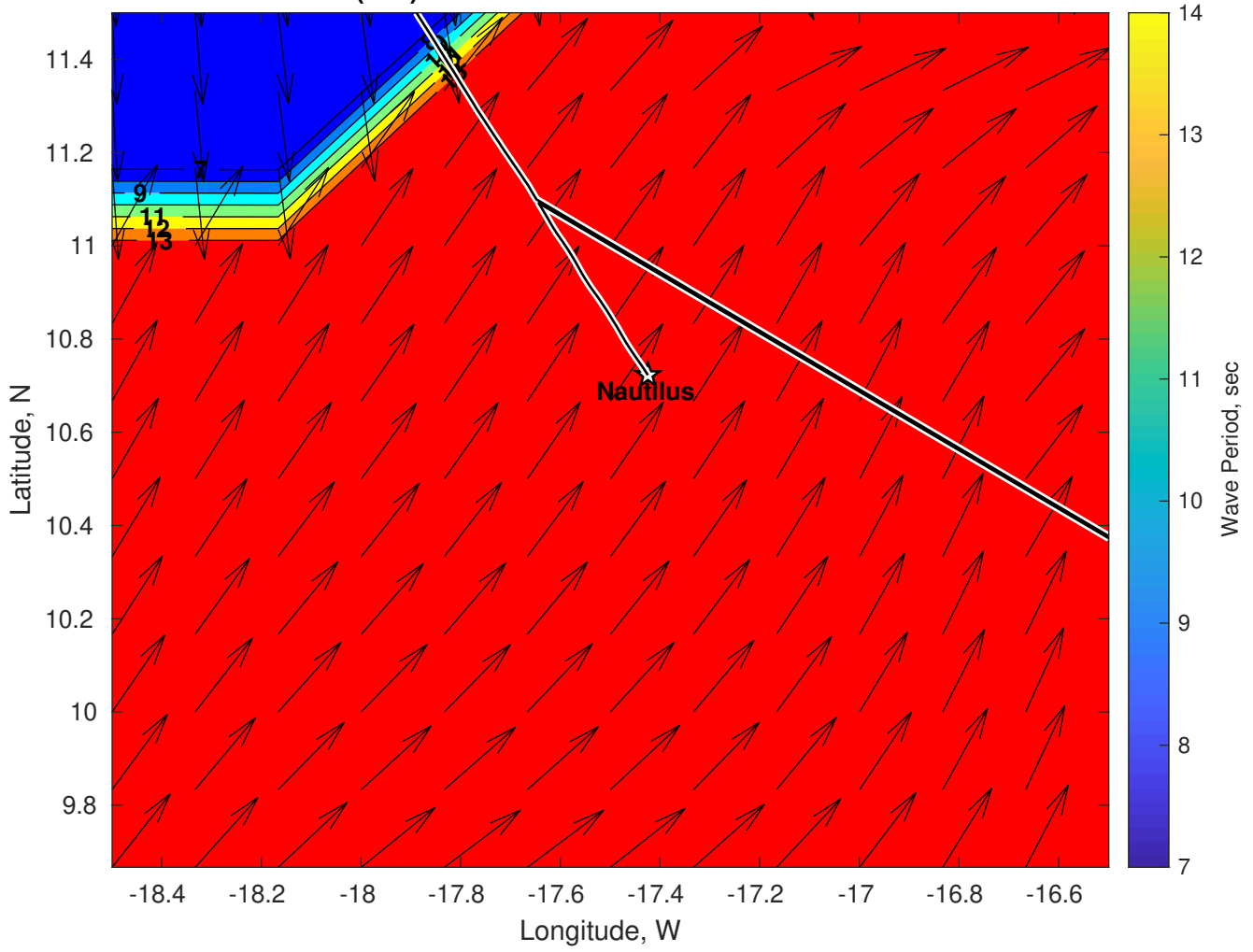
Met Forecast for Nautilus from 02-Jan-2025 12:00:00 to 09-Jan-2025 12:00:00



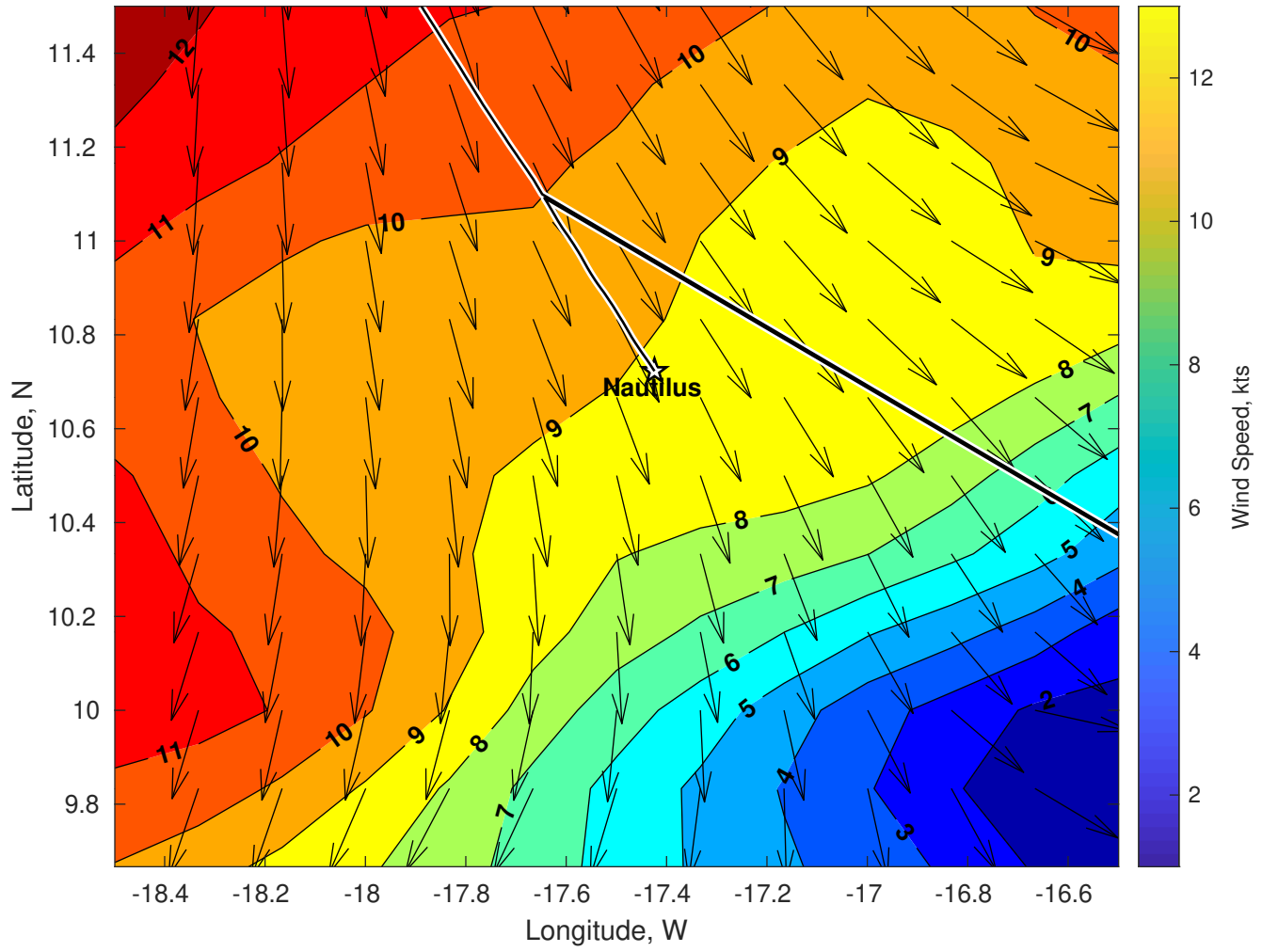
Wave Height (ft) for Nautilus at 02-Jan-2025 21:00:00



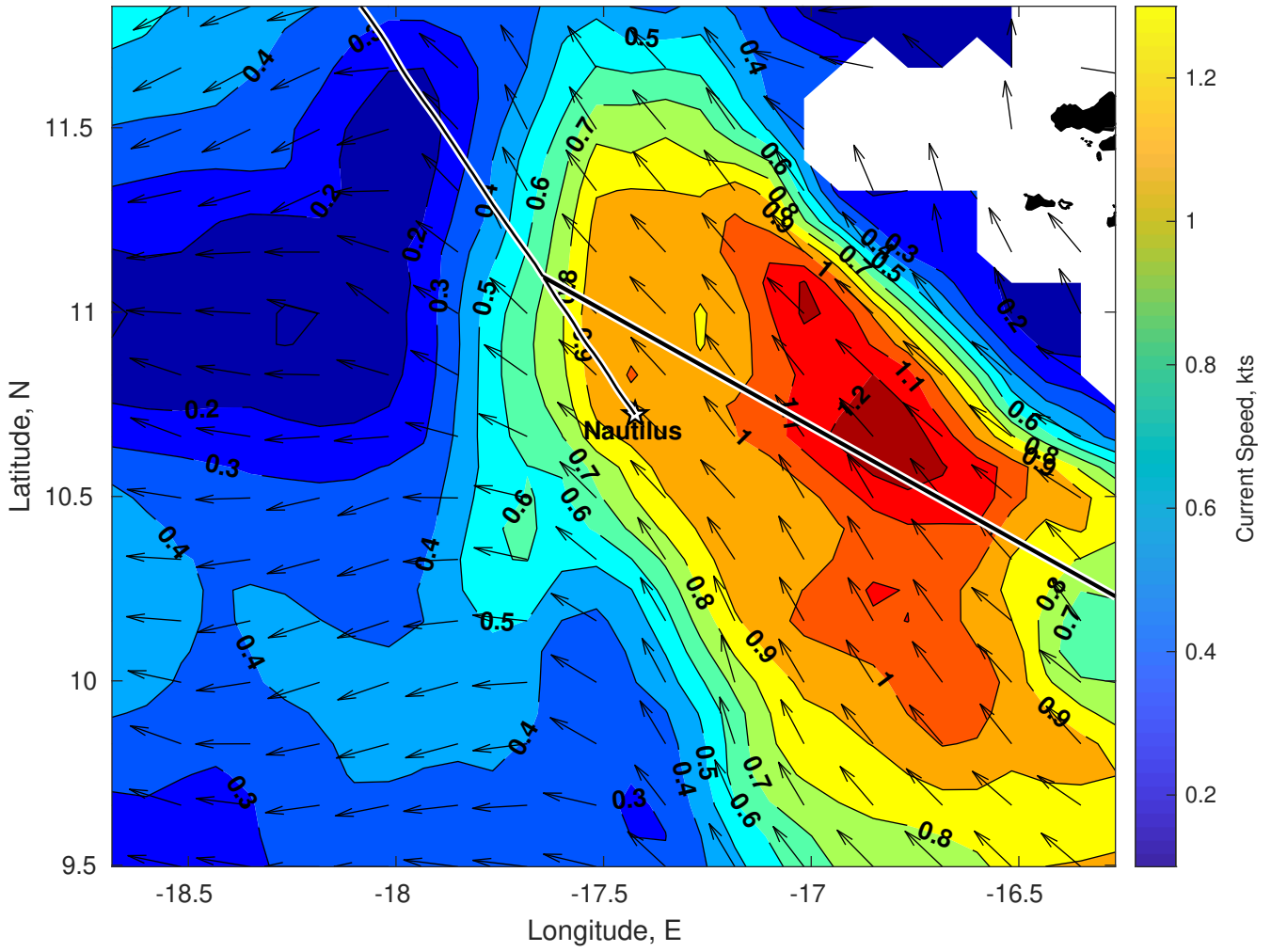
Wave Period (sec) for Nautilus at 02-Jan-2025 21:00:00



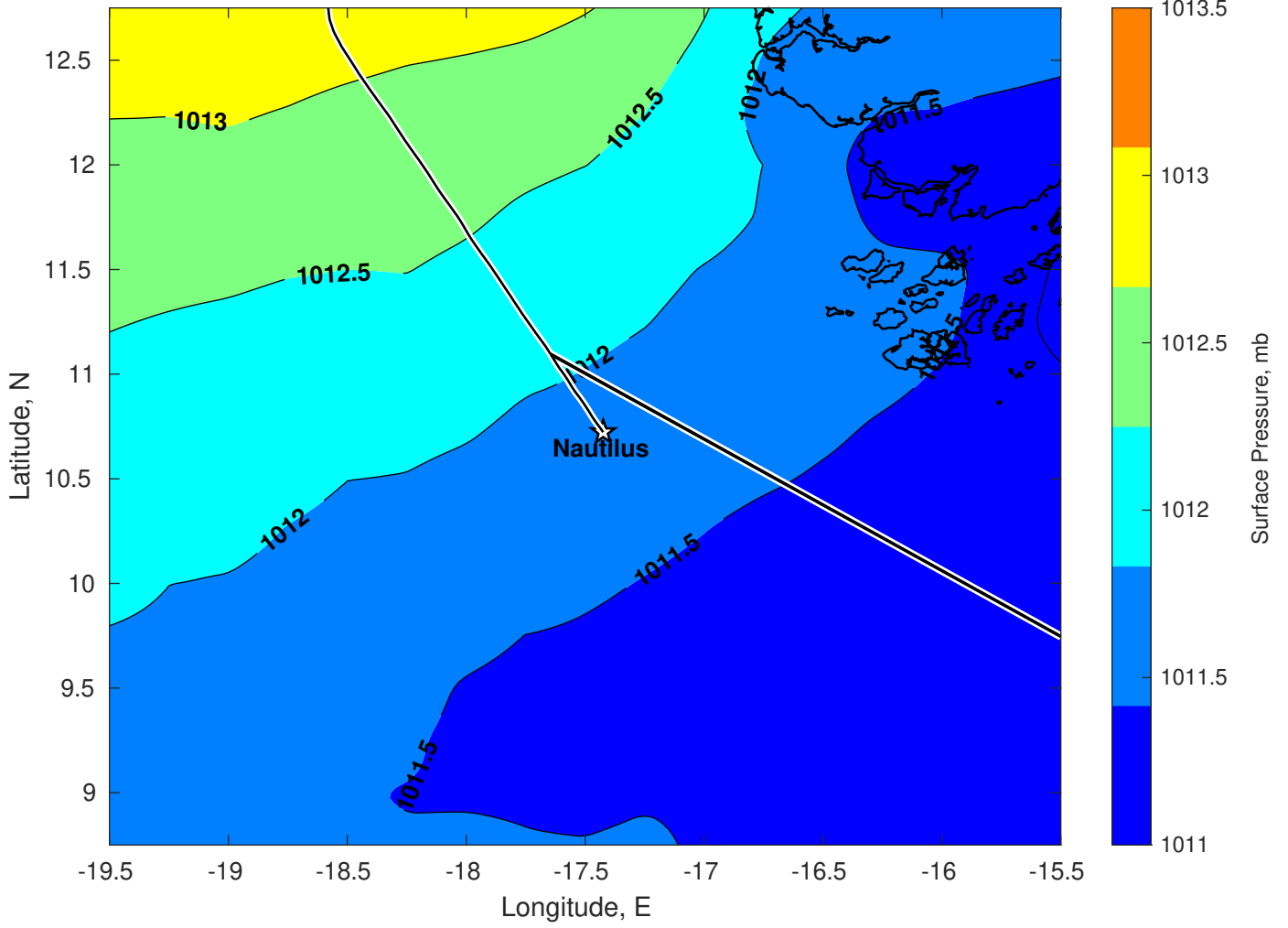
Winds (kts) for Nautilus at 02-Jan-2025 21:00:00



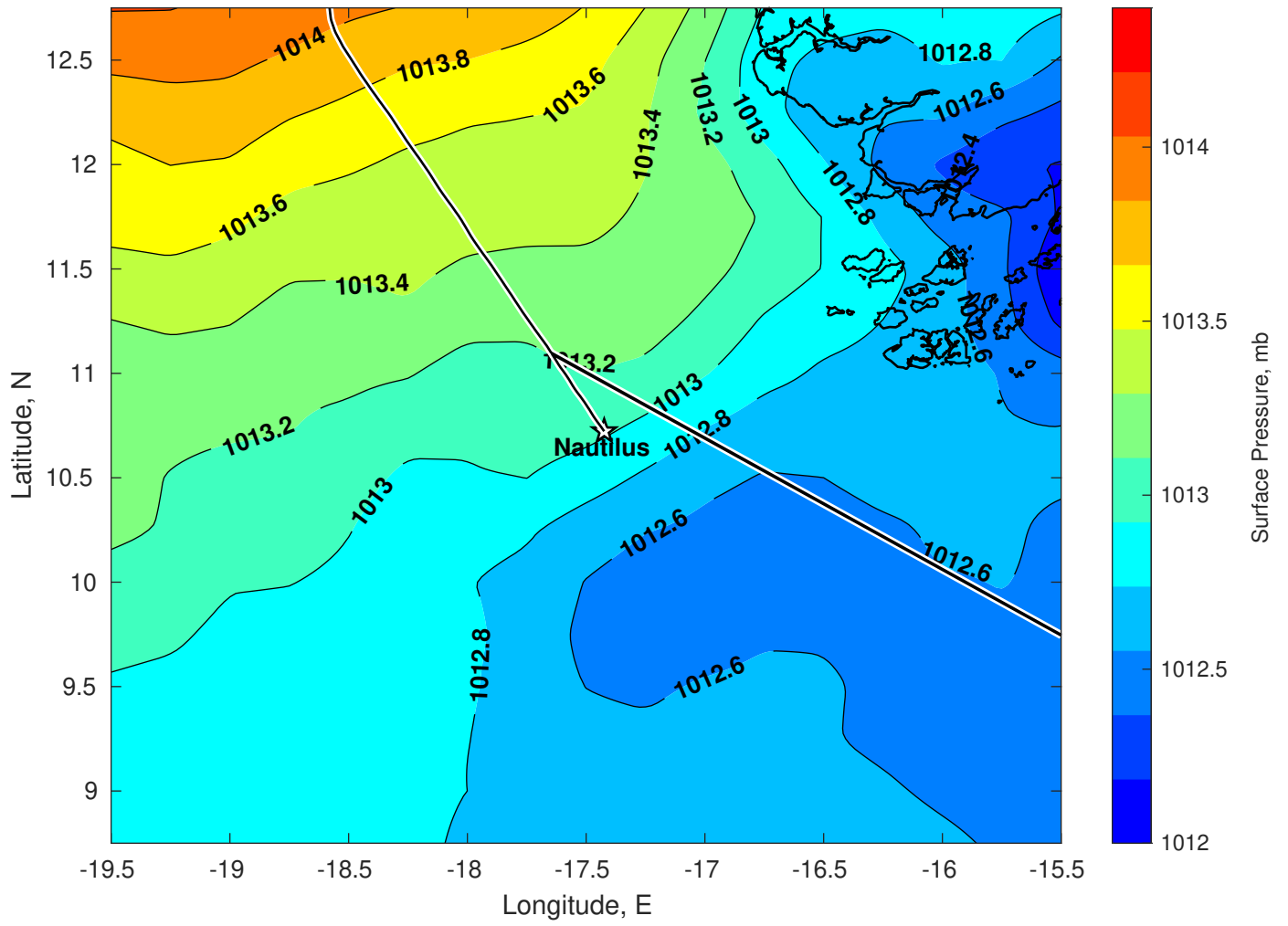
Surface Currents for Nautilus at 02-Jan-2025 00:00:00



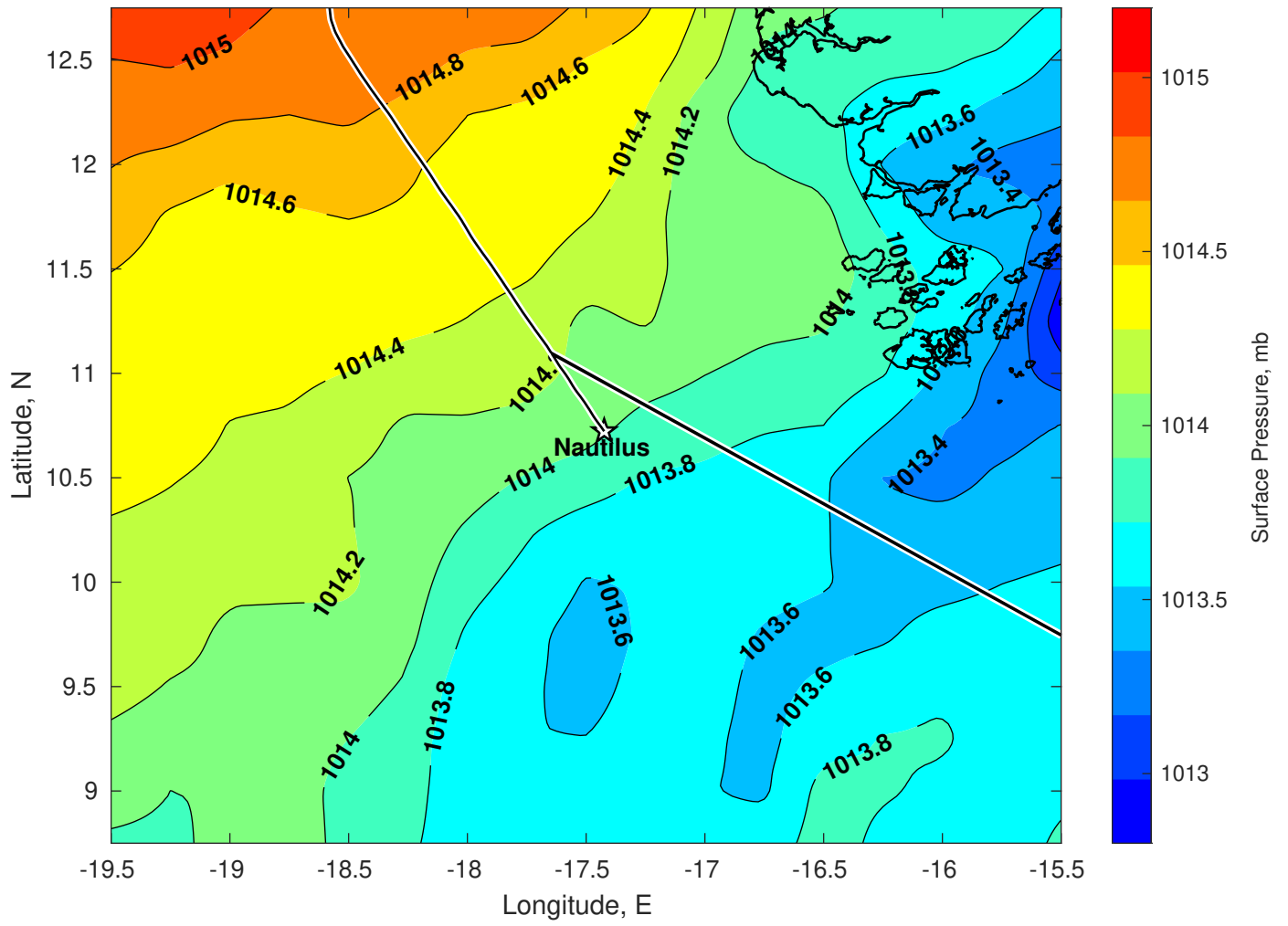
Surface Pressure (mb) for Nautilus at 02-Jan-2025 12:00:00



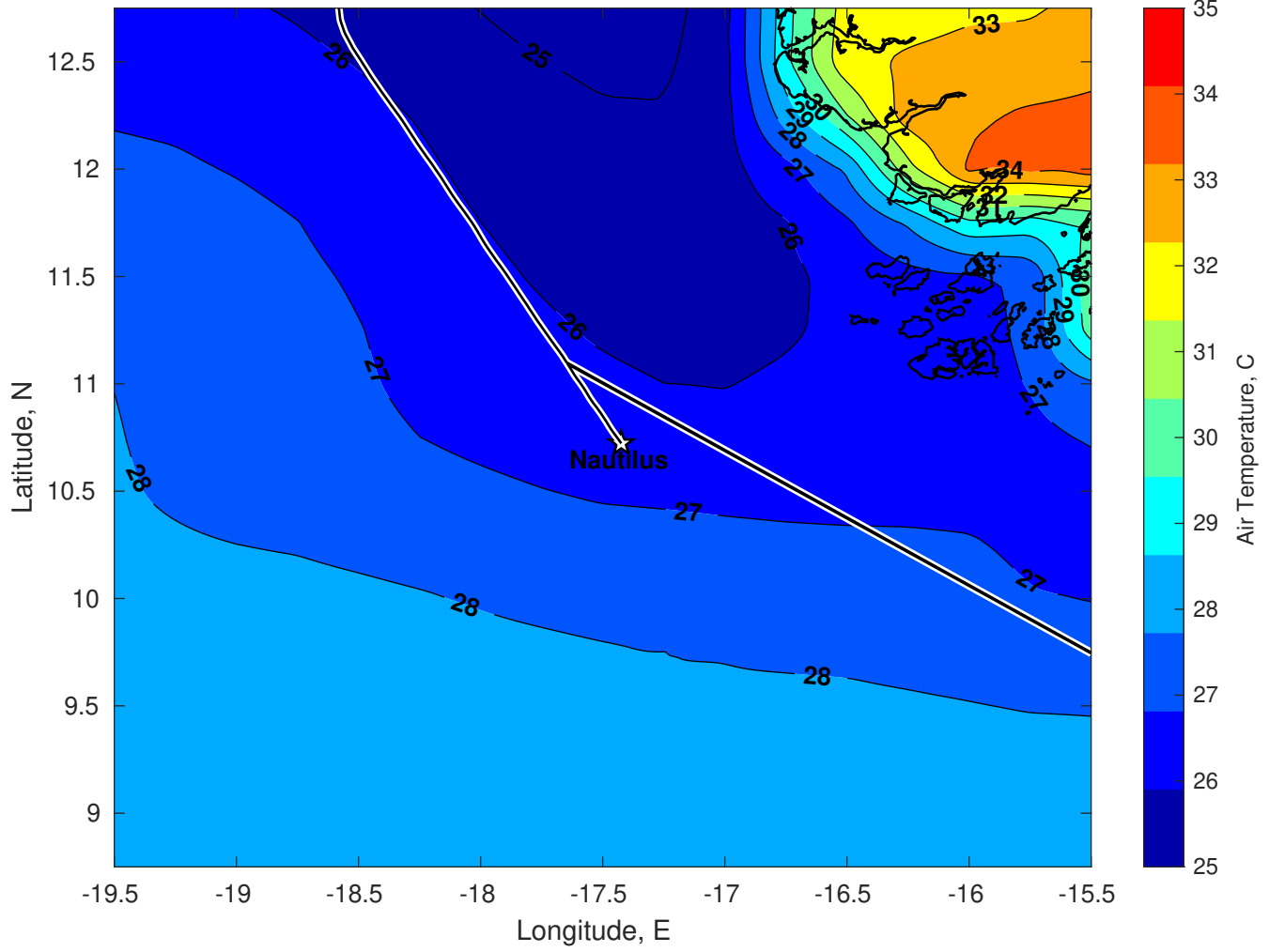
Surface Pressure (mb) for Nautilus at 03-Jan-2025 12:00:00



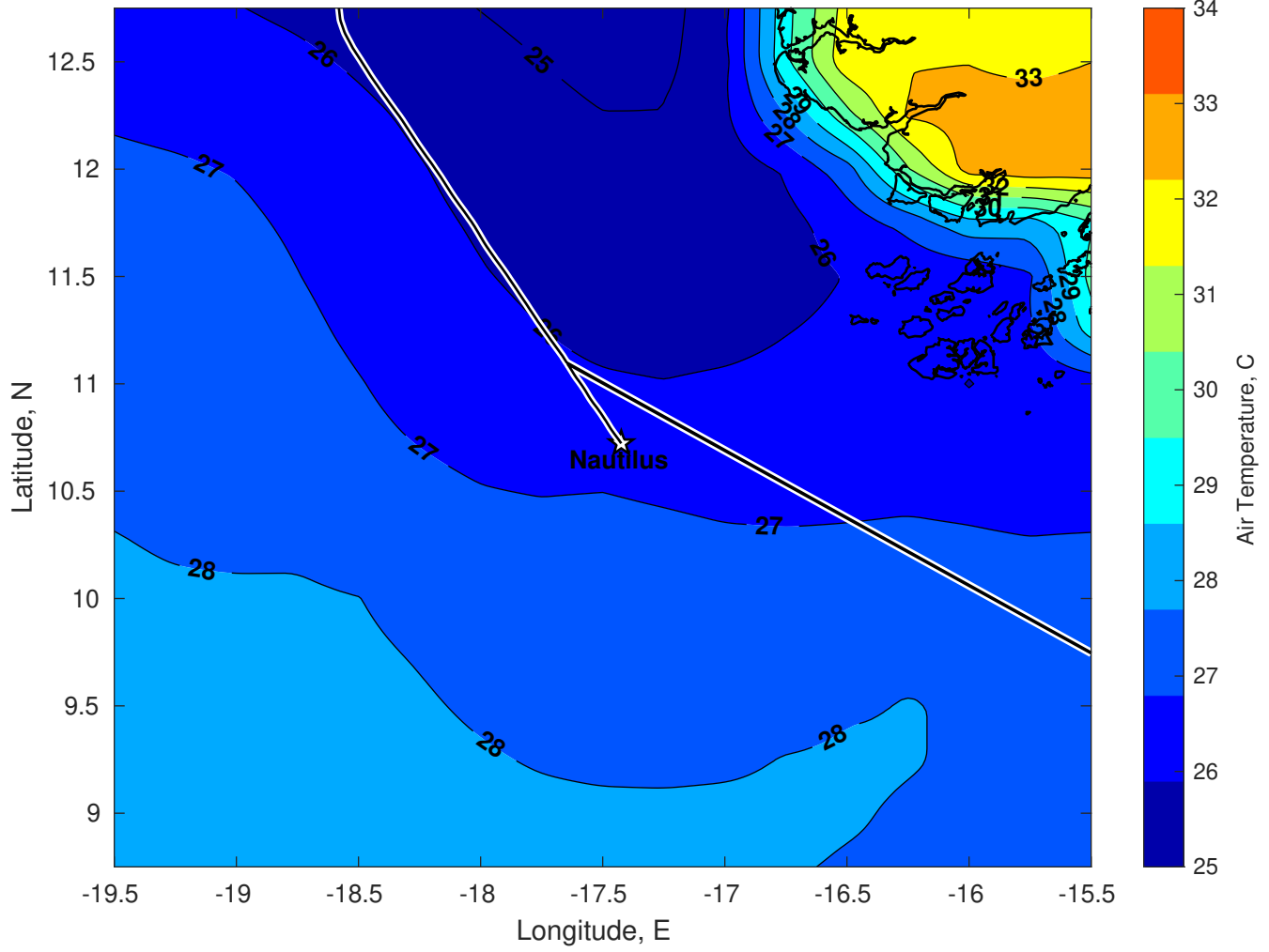
Surface Pressure (mb) for Nautilus at 04-Jan-2025 12:00:00



Air Temperature (C) for Nautilus at 02-Jan-2025



Air Temperature (C) for Nautilus at 02-Jan-2025



Air Temperature (C) for Nautilus at 02-Jan-2025

