
Marine Weather Forecast for Proteus
Forecast valid as of 02-Jan-2025 2100 GMT

All times are local.

Tonight

Winds: E, 5-10 kts.
Waves: NW, 3-4 feet, 13-14 sec.
Currents: N, less than 0.5 knot.

Friday

Winds: NW, 5-10 kts.
Waves: NW, 3-4 feet, 11-12 sec.
Currents: N, less than 0.5 knot.

Friday Night

Winds: N, 5-10 kts.
Waves: NW, 3-4 feet, 11-12 sec.
Currents: E, 0.5-1 kts.

Saturday

Winds: E, 10-15 kts.
Waves: NW, 3-4 feet, 10-11 sec.
Currents: SE, 0.5-1 kts.

Saturday Night

Winds: N, 10-15 kts.
Waves: NW, 3-4 feet, 10-11 sec.
Currents: S, less than 0.5 knot.

Sunday

Winds: N, 10-15 kts.
Waves: NW, 4-5 feet, 11-12 sec.
Currents: W, less than 0.5 knot.

Sunday Night

Winds: NE, 10-15 kts.
Waves: NW, 4-5 feet, 12-13 sec.
Currents: N, less than 0.5 knot.

Monday

Winds: N, 5-10 kts.
Waves: NW, 4-5 feet, 10-11 sec.
Currents: NE, less than 0.5 knot.

Monday Night

Winds: NE, 10-15 kts.
Waves: W, 4-5 feet, 11-12 sec.
Currents: E, less than 0.5 knot.

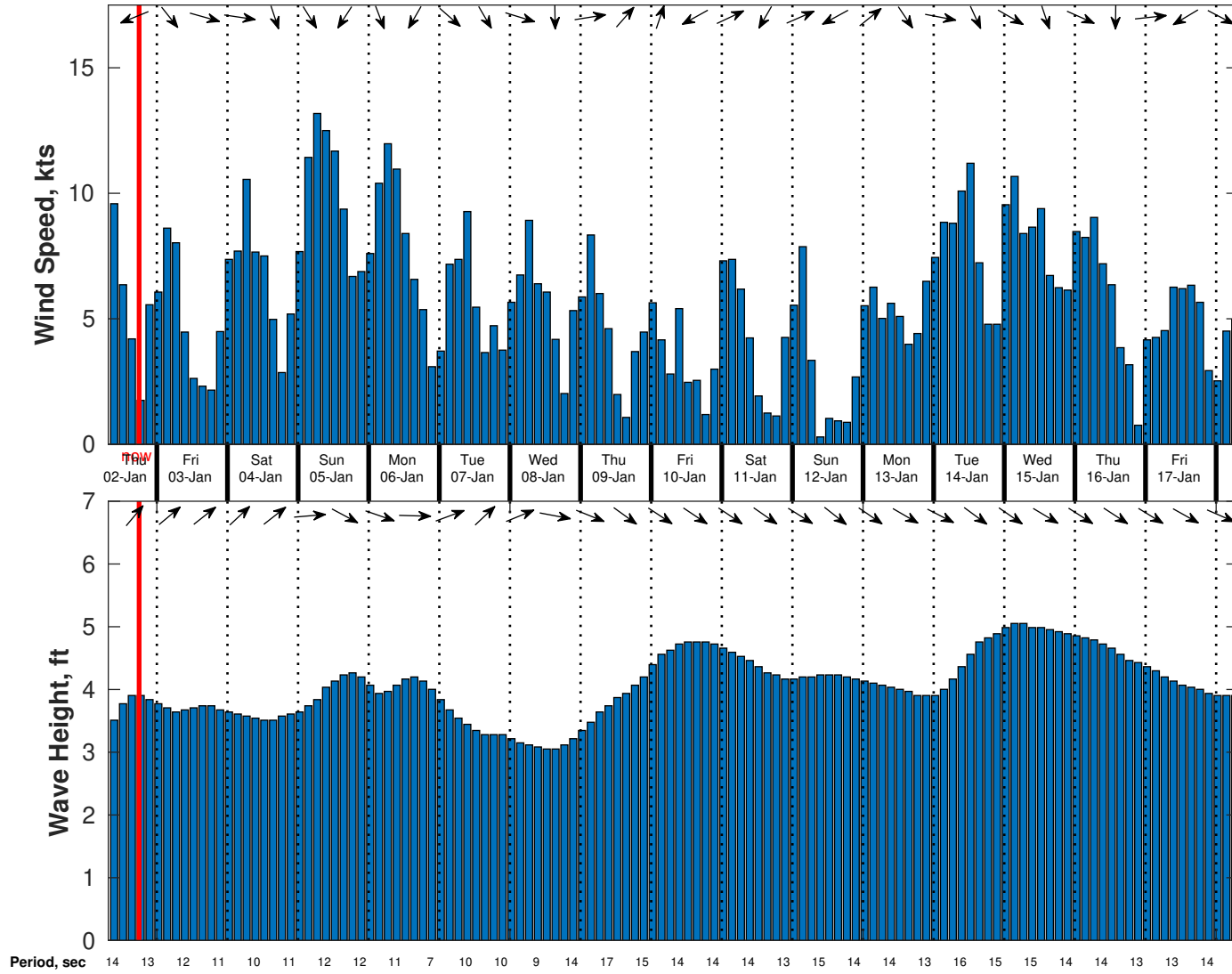
Tuesday

Winds: NW, 5-10 kts.
Waves: NW, 3-4 feet, 9-10 sec.
Currents: SE, less than 0.5 knot.

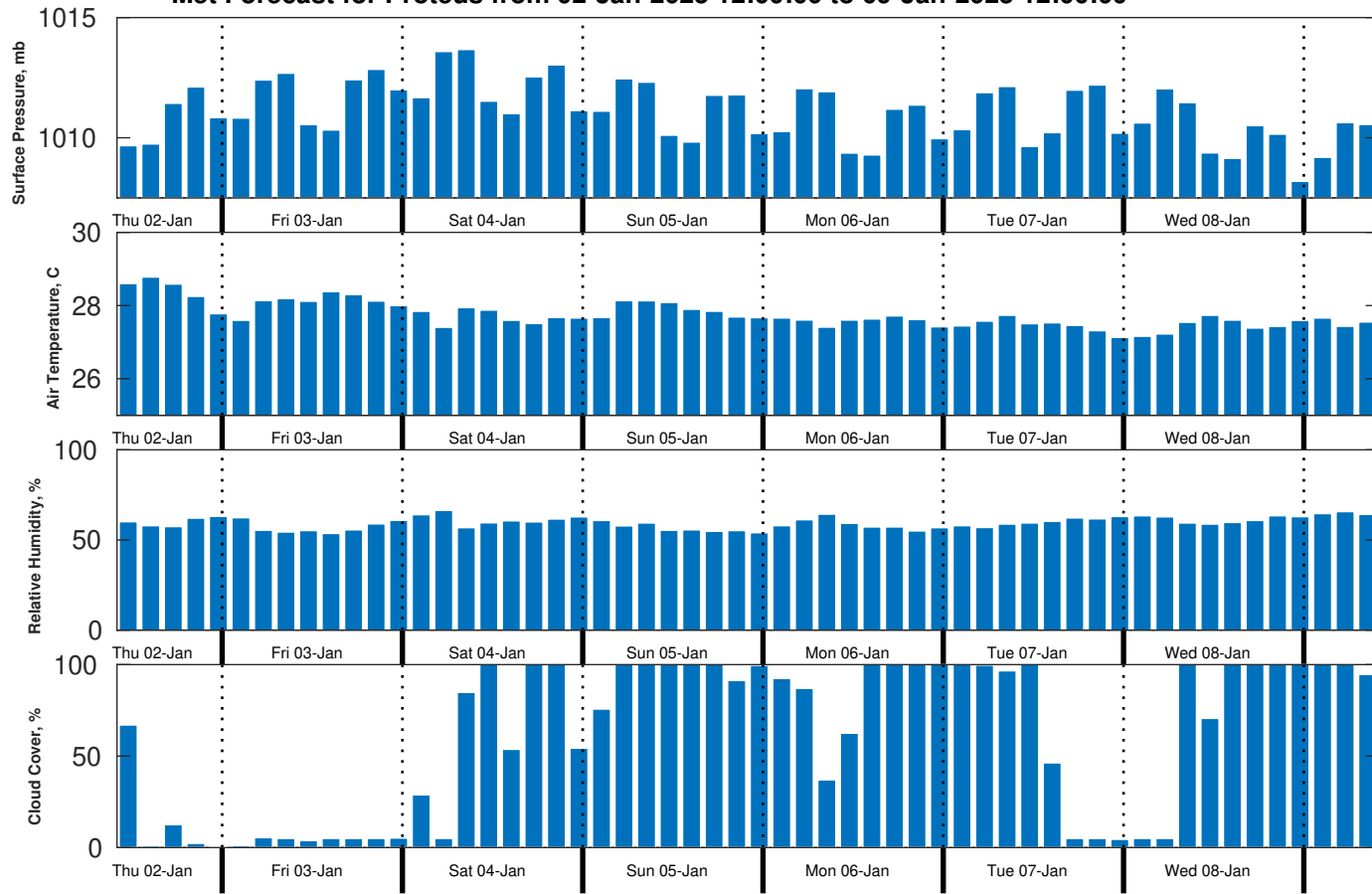
Tuesday Night

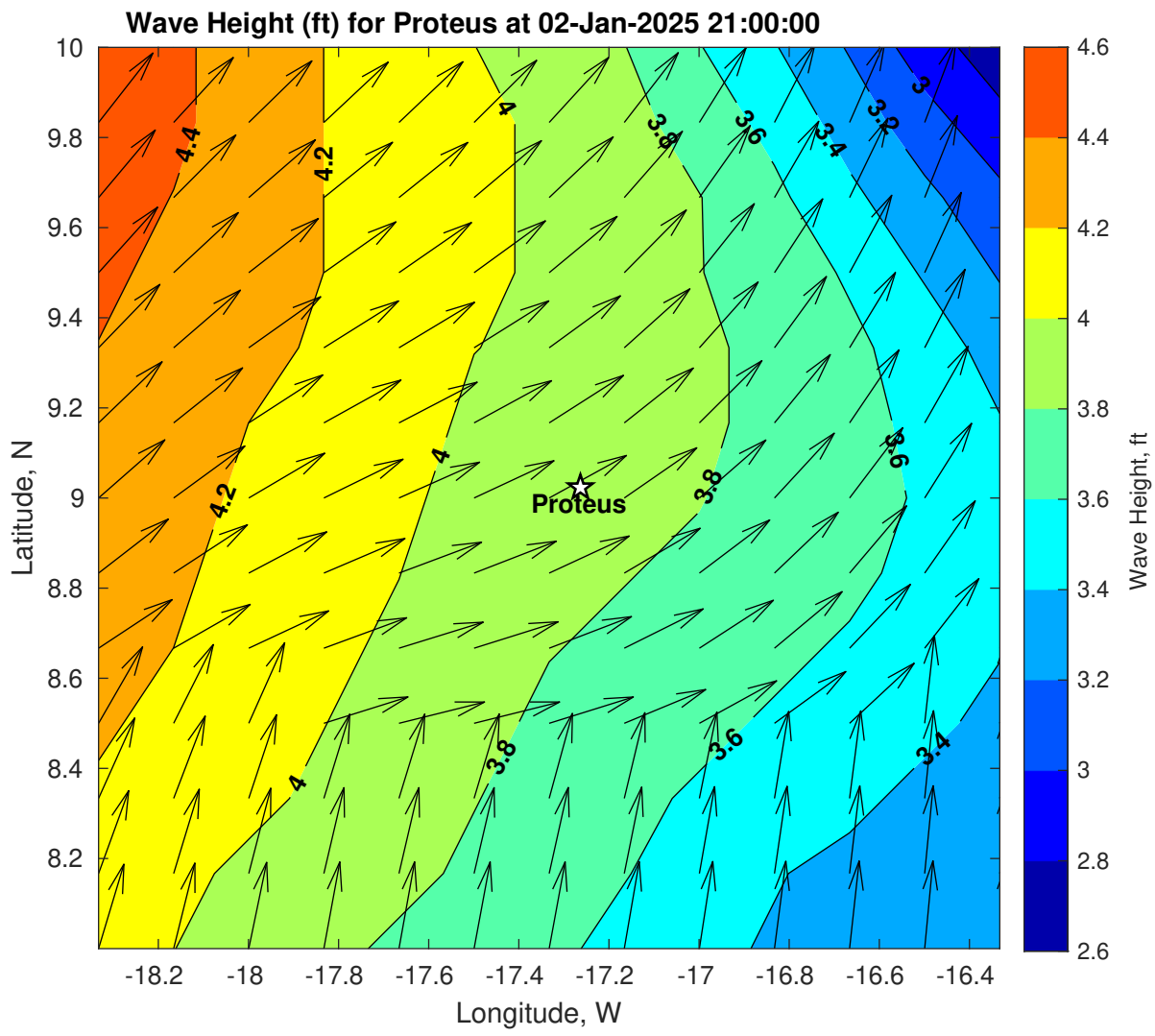
Winds: N, 5-10 kts.
Waves: NW, 3-4 feet, 10-11 sec.

Wind & Wave Forecast for Proteus from 02-Jan-2025 08:00:00 to 18-Jan-2025 08:00:00

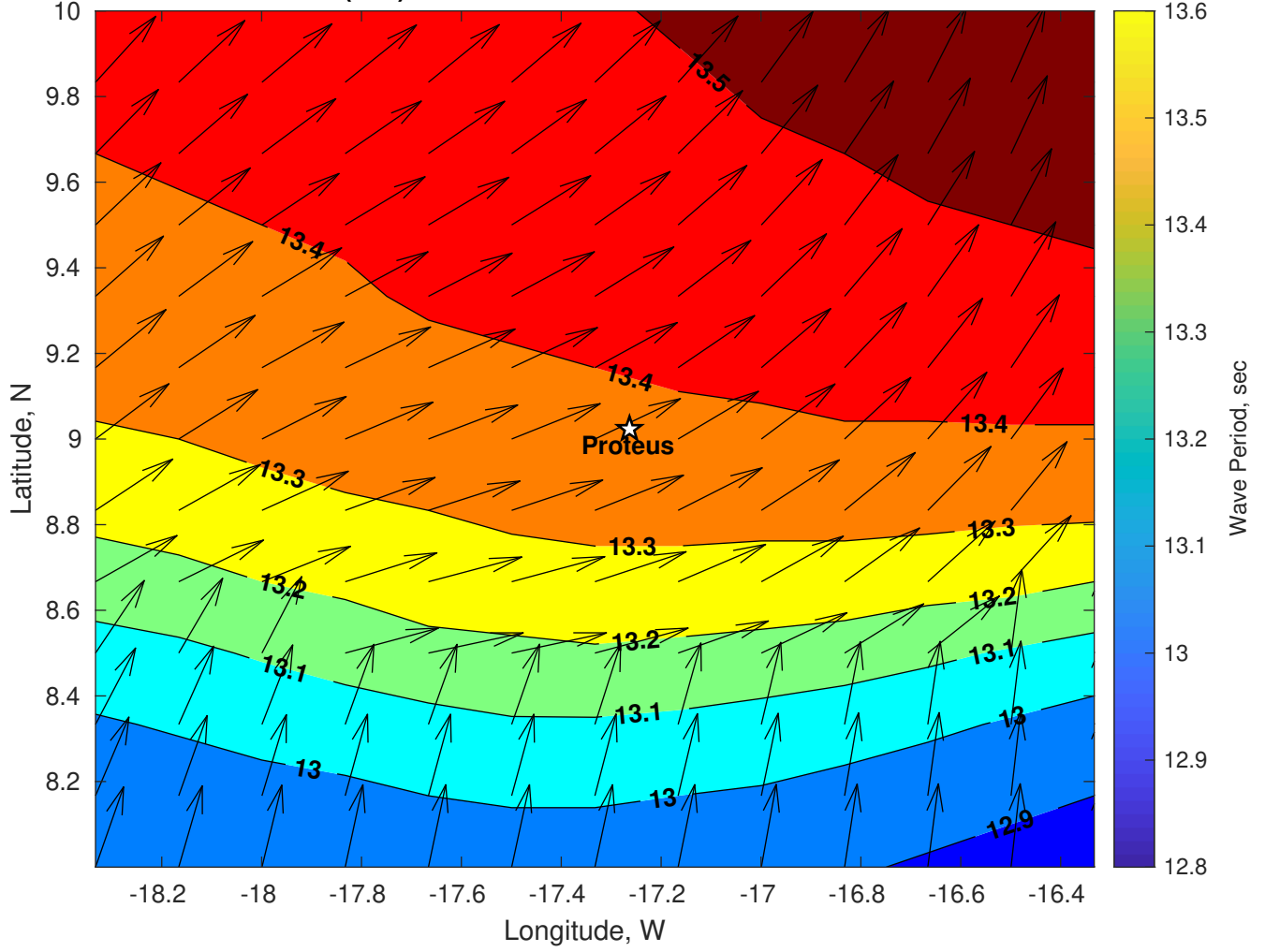


Met Forecast for Proteus from 02-Jan-2025 12:00:00 to 09-Jan-2025 12:00:00

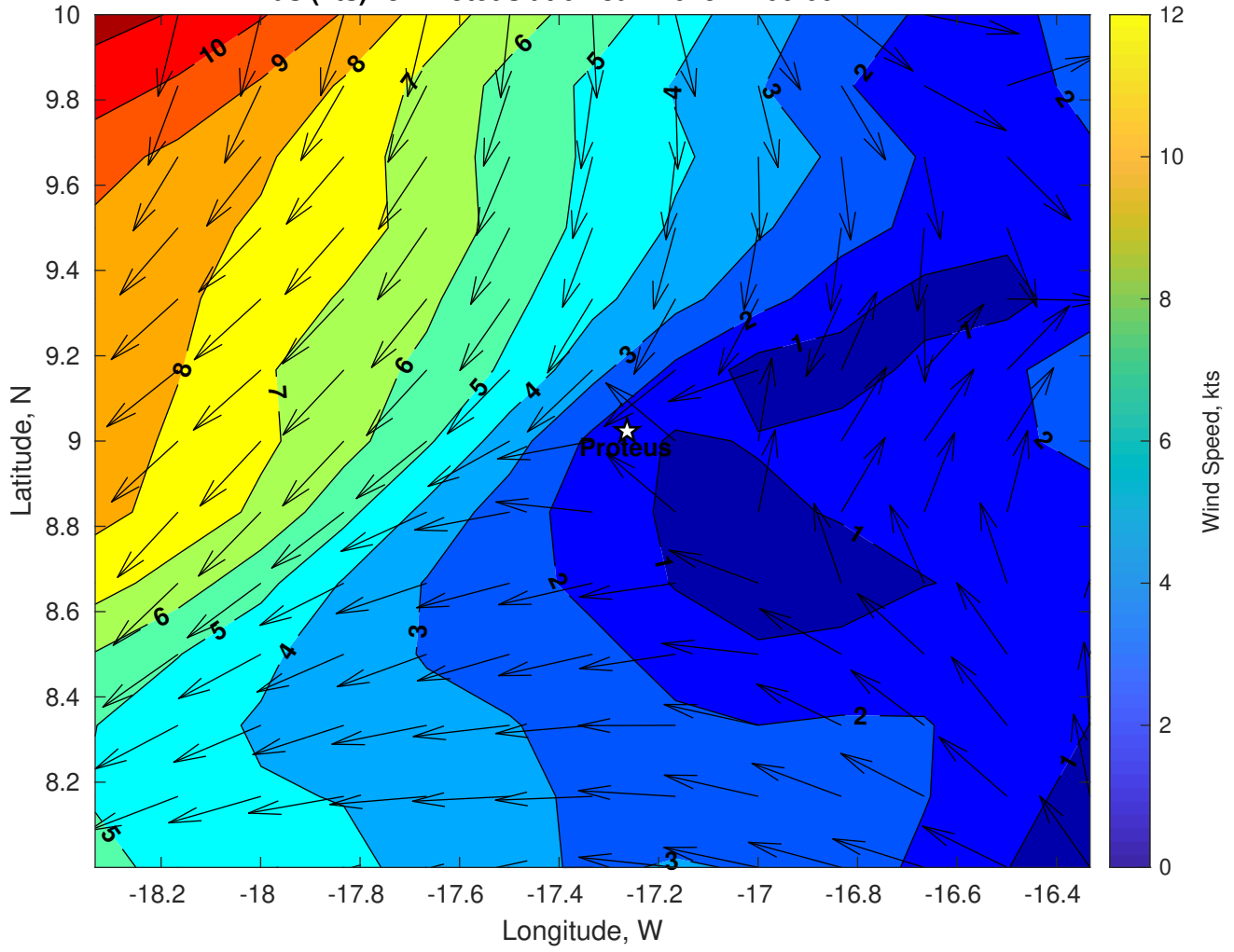




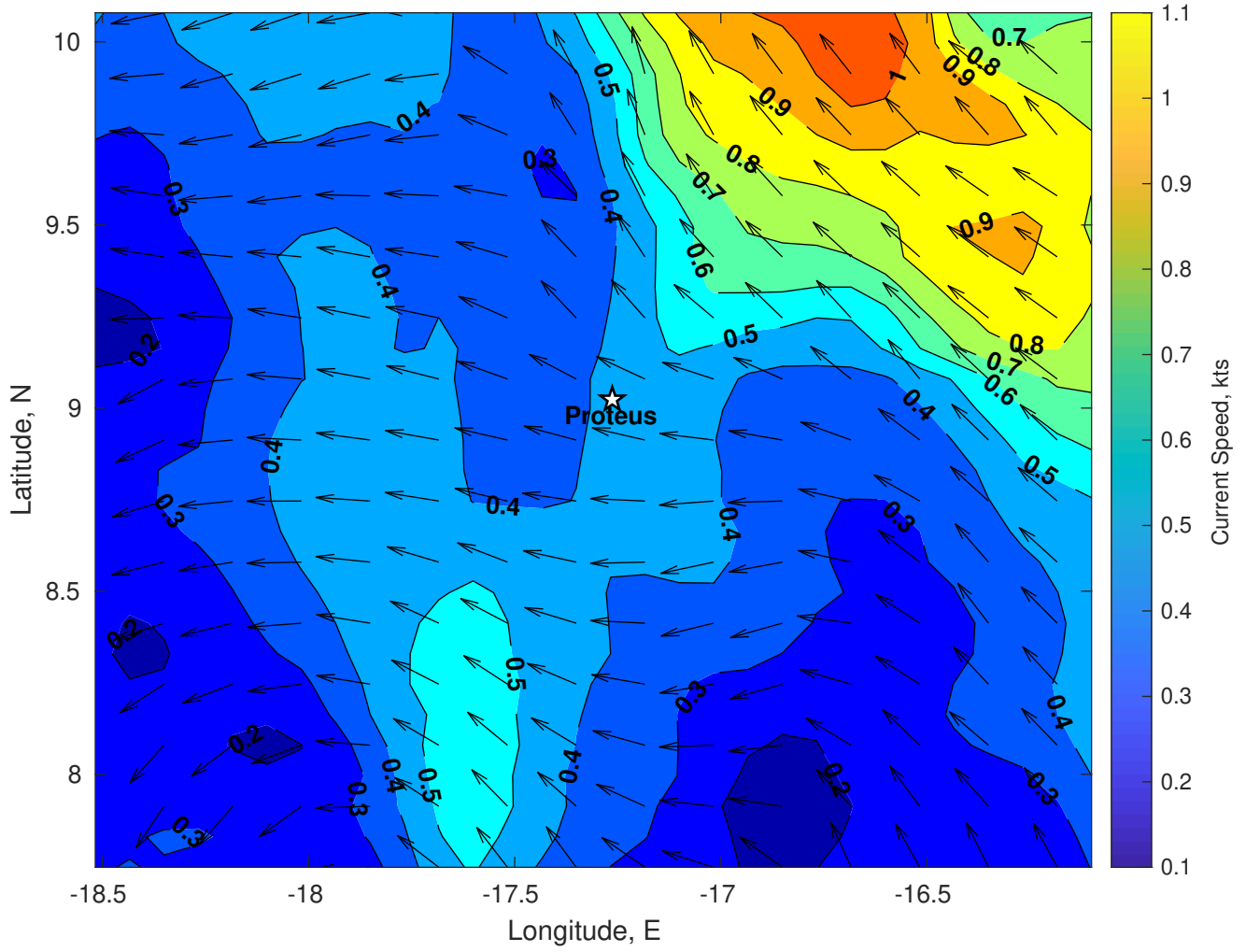
Wave Period (sec) for Proteus at 02-Jan-2025 21:00:00



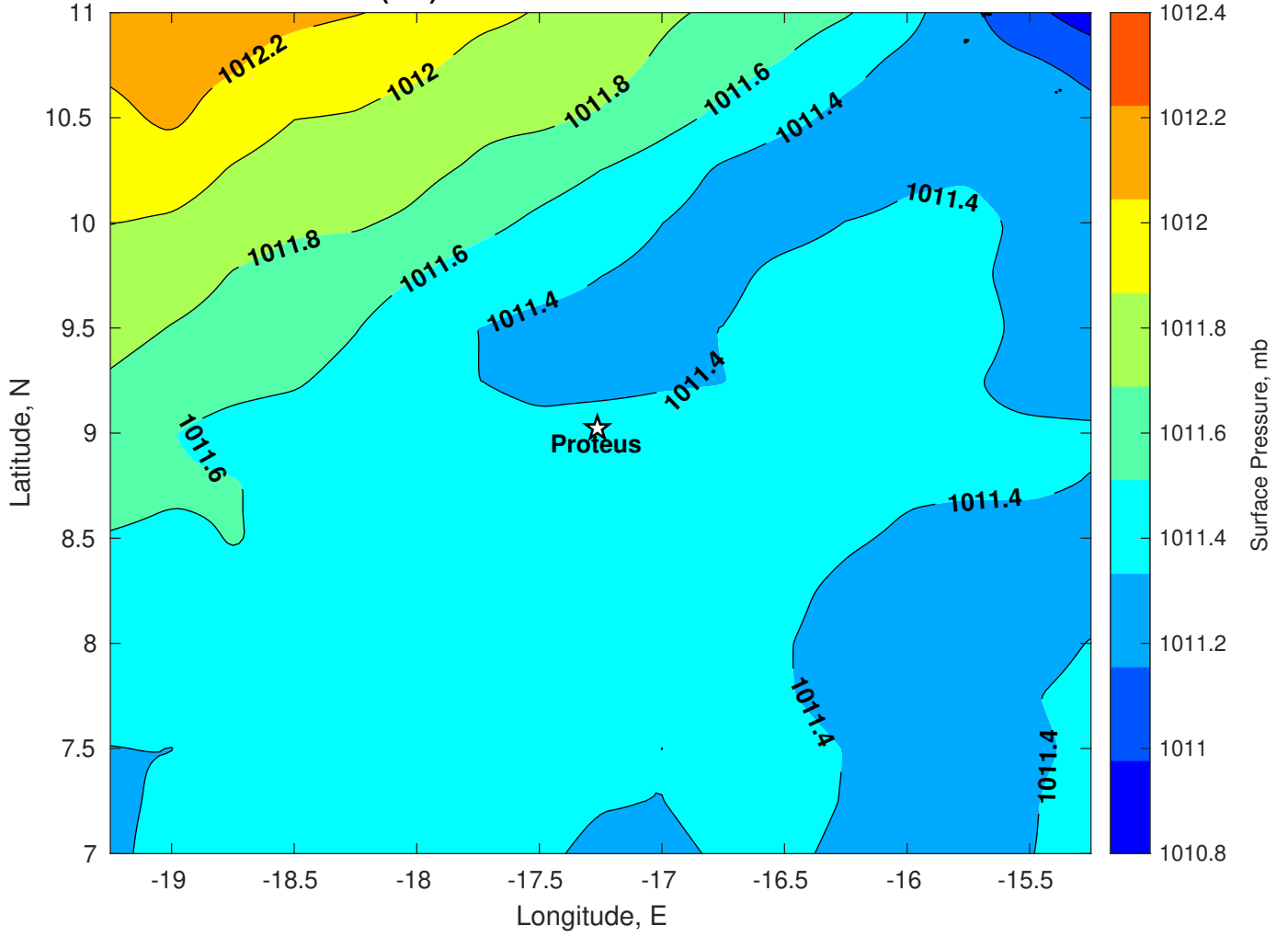
Winds (kts) for Proteus at 02-Jan-2025 21:00:00



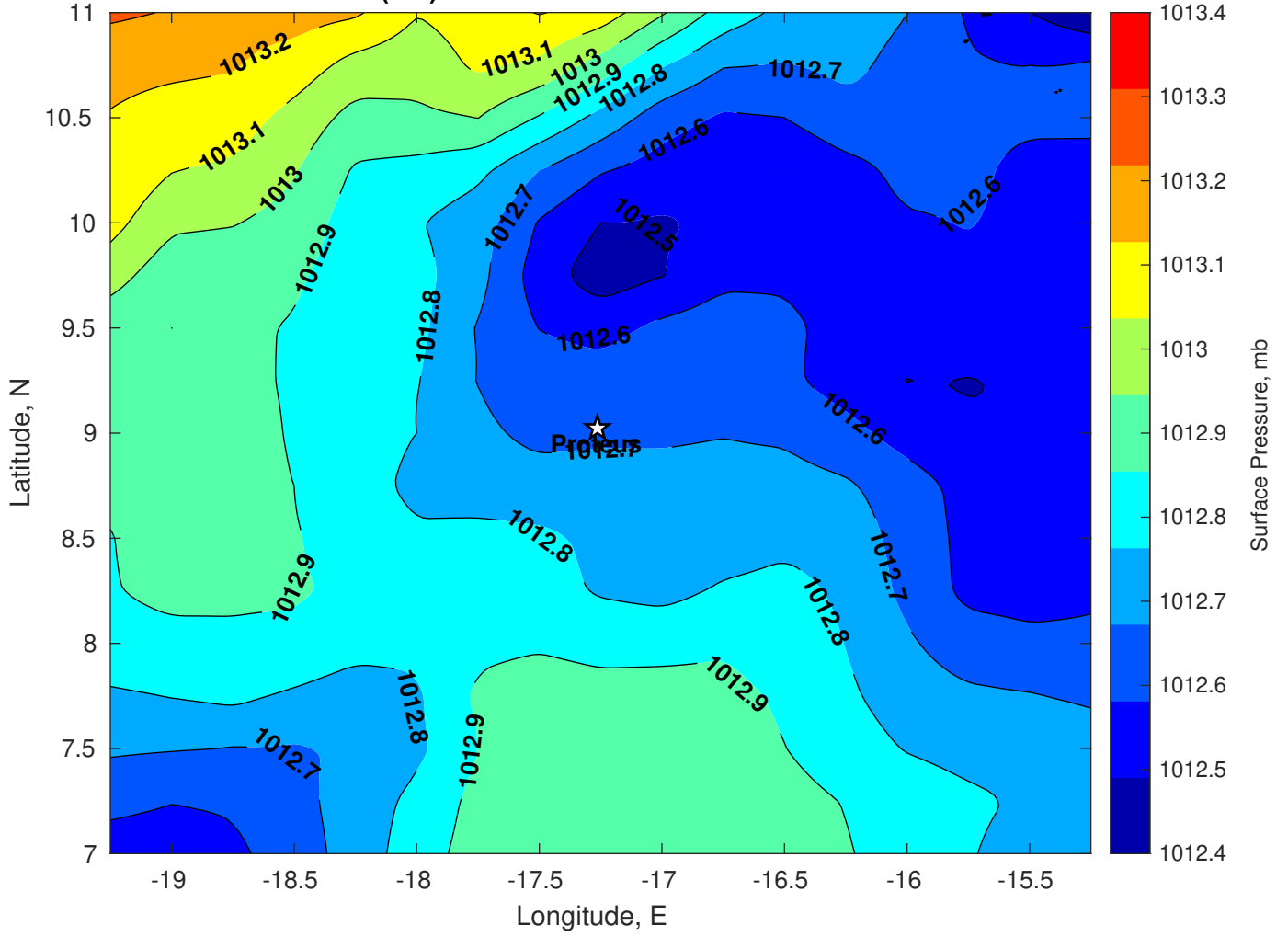
Surface Currents for Proteus at 02-Jan-2025 00:00:00



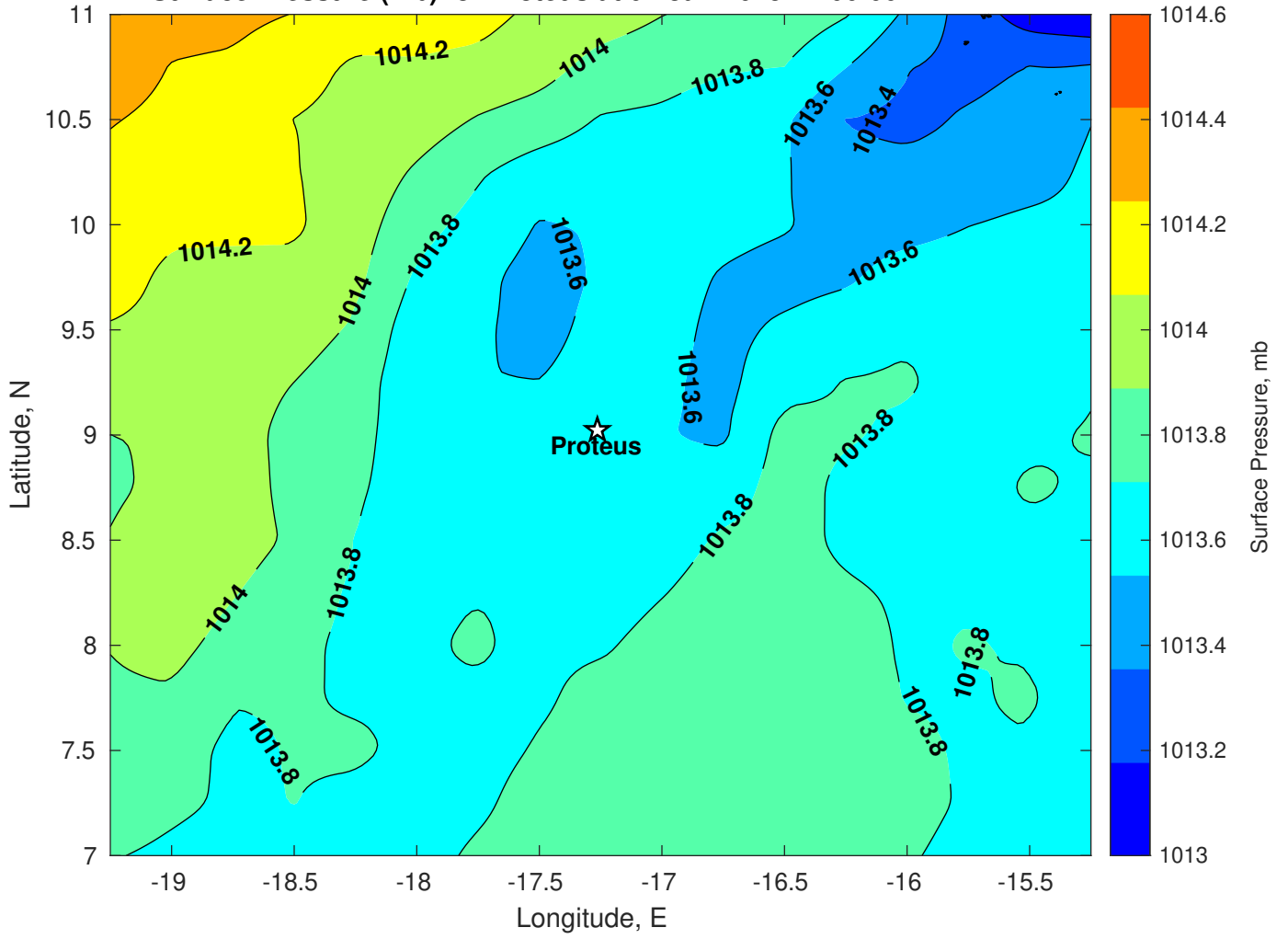
Surface Pressure (mb) for Proteus at 02-Jan-2025 12:00:00



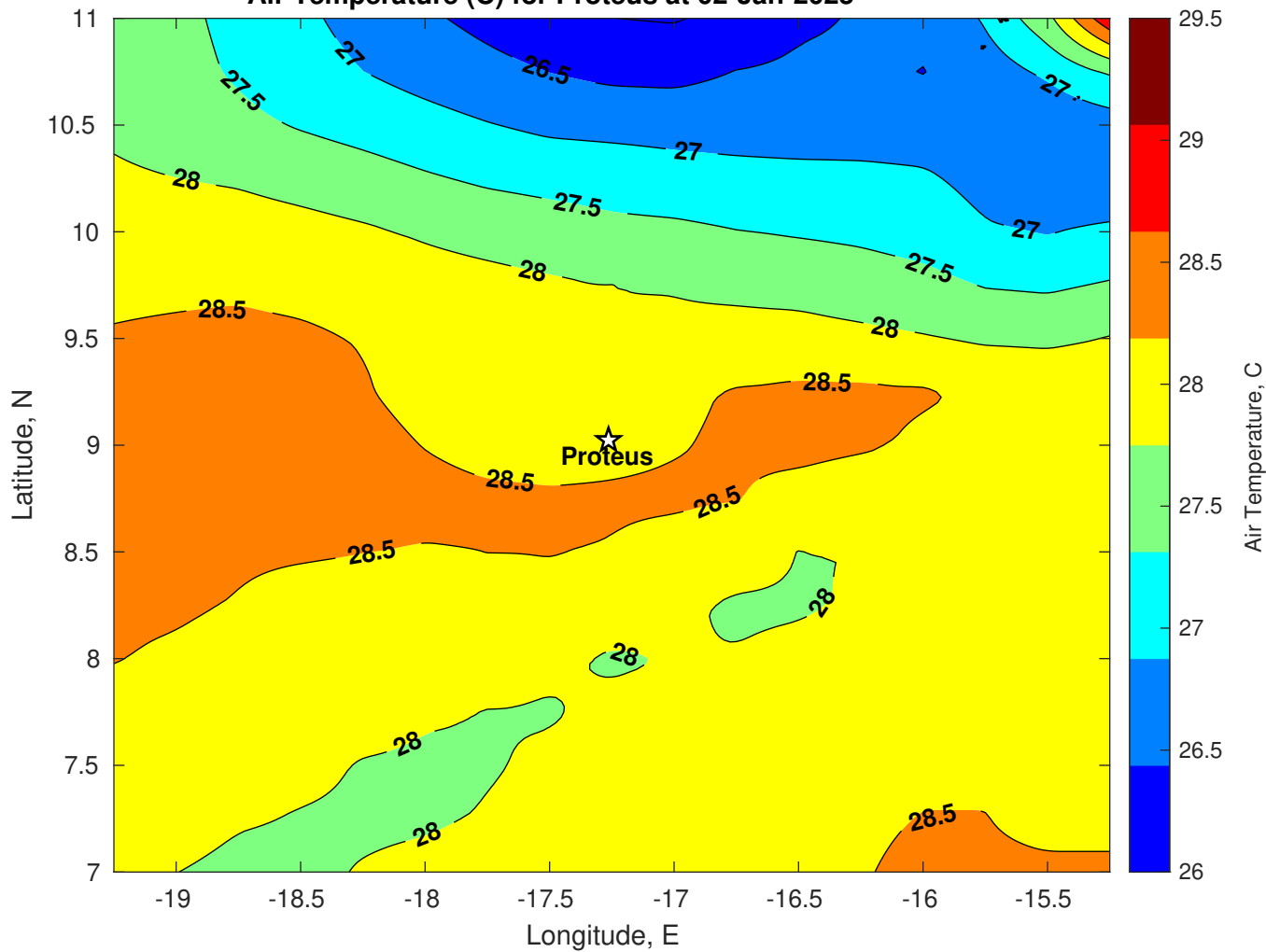
Surface Pressure (mb) for Proteus at 03-Jan-2025 12:00:00



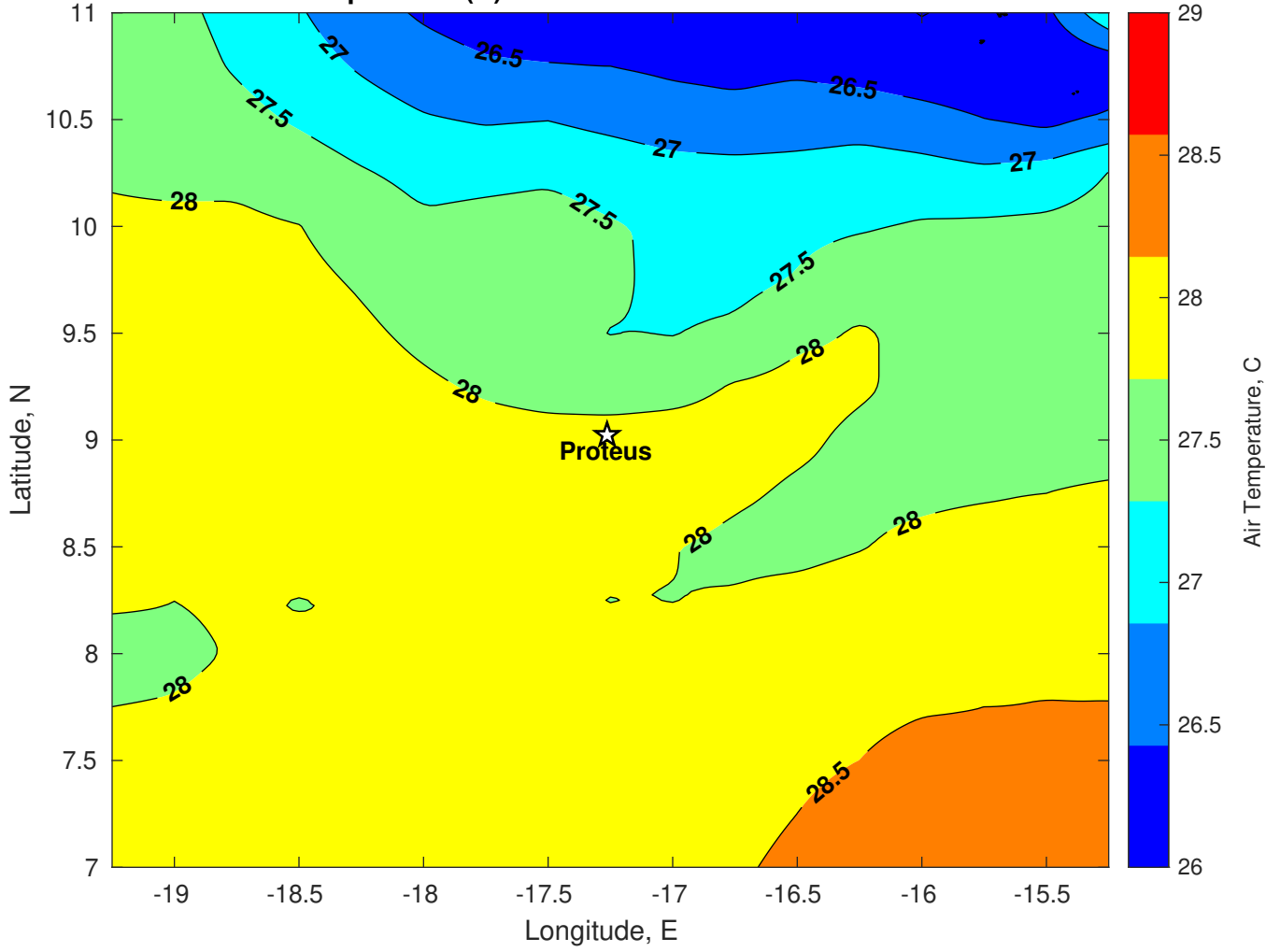
Surface Pressure (mb) for Proteus at 04-Jan-2025 12:00:00



Air Temperature (C) for Proteus at 02-Jan-2025



Air Temperature (C) for Proteus at 02-Jan-2025



Air Temperature (C) for Proteus at 02-Jan-2025

