

\*\*\*\*\*

Marine Weather Forecast for Proteus  
Forecast valid as of 06-Jan-2025 0900 GMT  
\*\*\*\*\*

All times are local.

Today

Winds: NE, 10-15 kts.  
Waves: W, 4-5 feet, 11-12 sec.  
No currents available.

Tonight

Winds: N, 10-15 kts.  
Waves: N, 4-5 feet, 7-8 sec.  
No currents available.

Tuesday

Winds: N, 10-15 kts.  
Waves: N, 3-4 feet, 9-10 sec.  
No currents available.

Tuesday Night

Winds: N, 5-10 kts.  
Waves: N, 3-4 feet, 7-8 sec.  
No currents available.

Wednesday

Winds: N, 5-10 kts.  
Waves: NW, 3-4 feet, 7-8 sec.  
No currents available.

Wednesday Night

Winds: NW, 5-10 kts.  
Waves: NW, 3-4 feet, 13-14 sec.  
No currents available.

Thursday

Winds: NW, 5-10 kts.  
Waves: NW, 4-5 feet, 16-17 sec.  
No currents available.

Thursday Night

Winds: N, 5-10 kts.  
Waves: NW, 4-5 feet, 15-16 sec.  
No currents available.

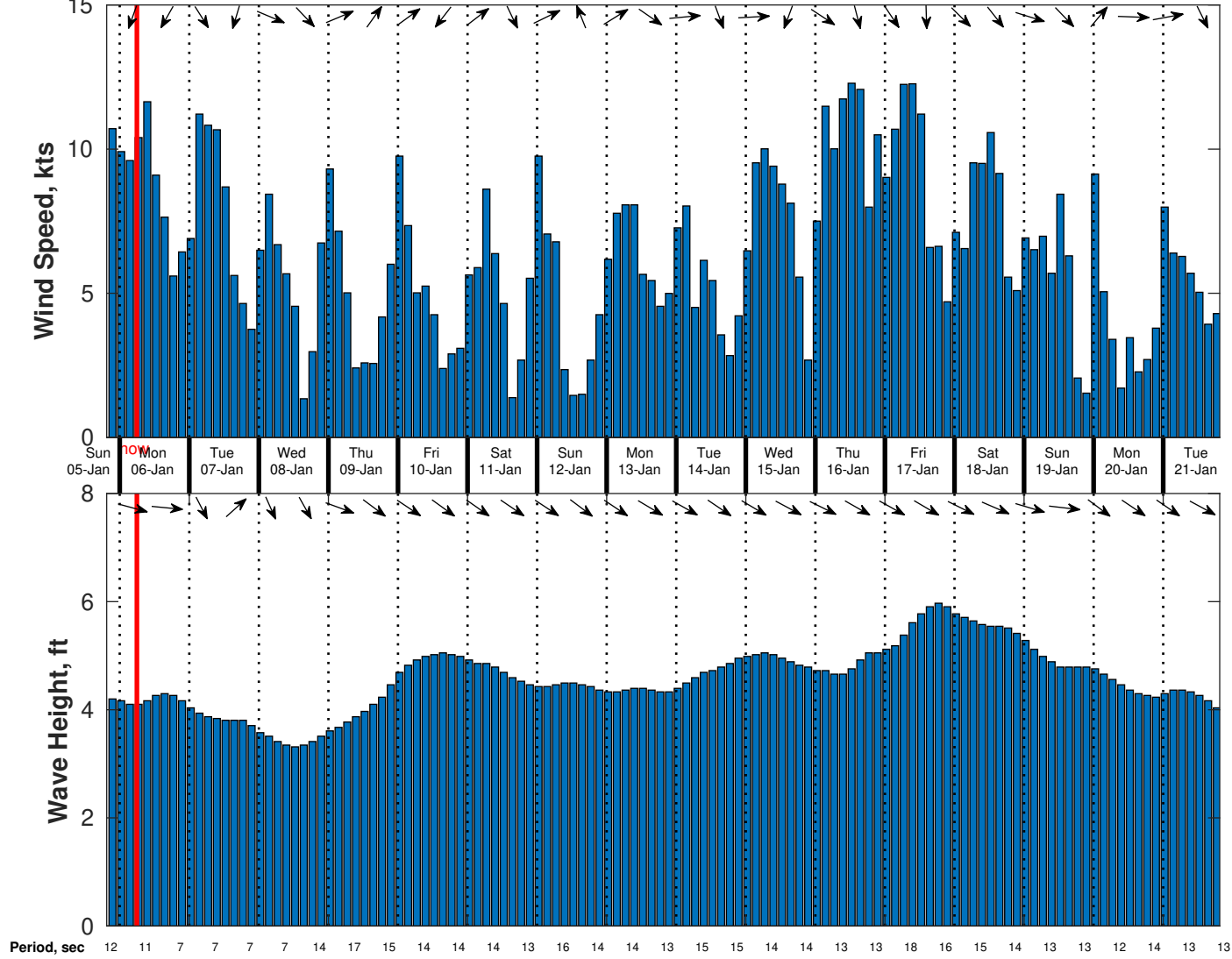
Friday

Winds: E, 5-10 kts.  
Waves: NW, 5-6 feet, 14-15 sec.  
No currents available.

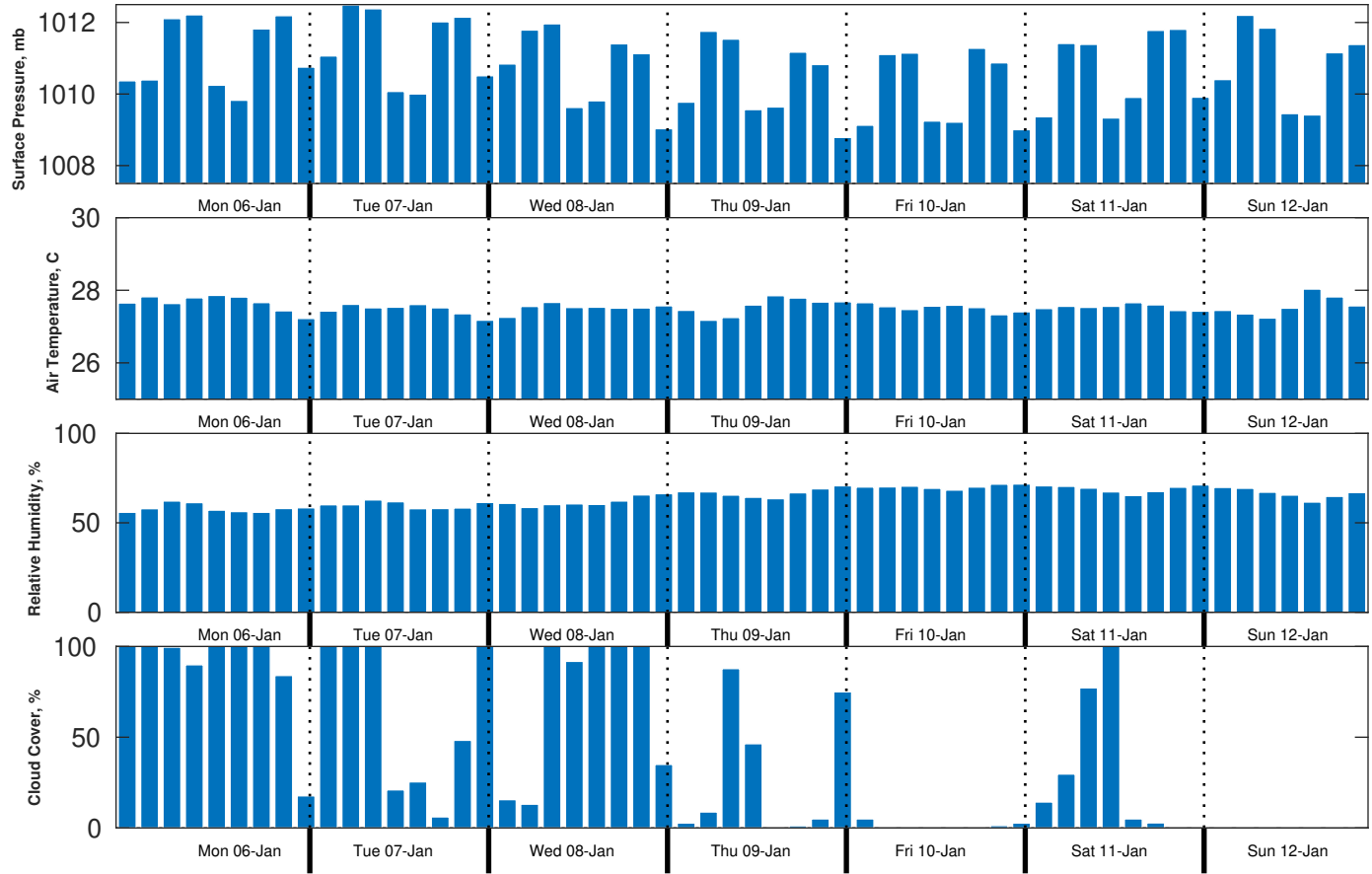
Friday Night

Winds: NE, 5-10 kts.  
Waves: NW, 5-6 feet, 14-15 sec.  
No currents available.

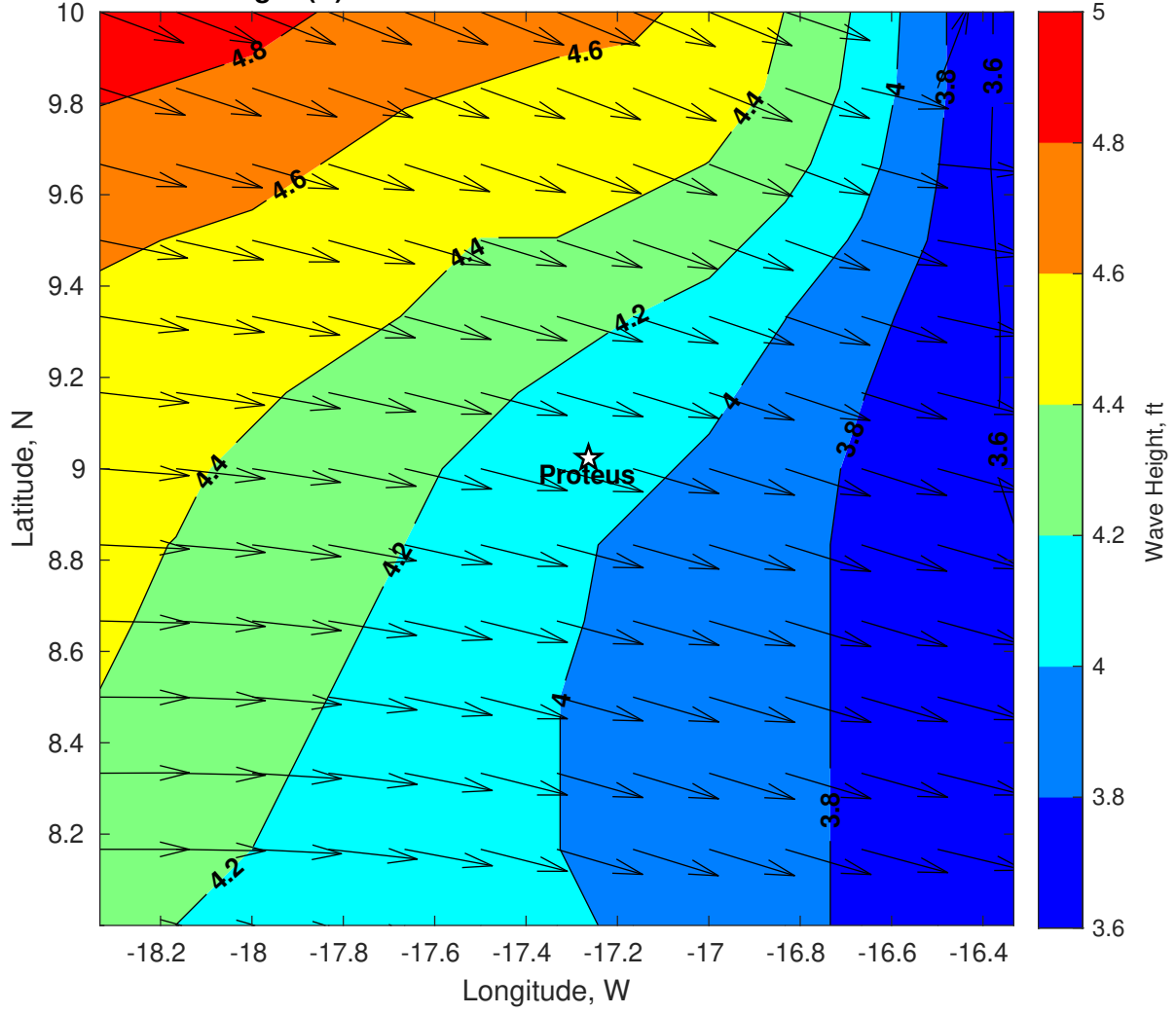
**Wind & Wave Forecast for Proteus from 05-Jan-2025 20:00:00 to 21-Jan-2025 20:00:00**



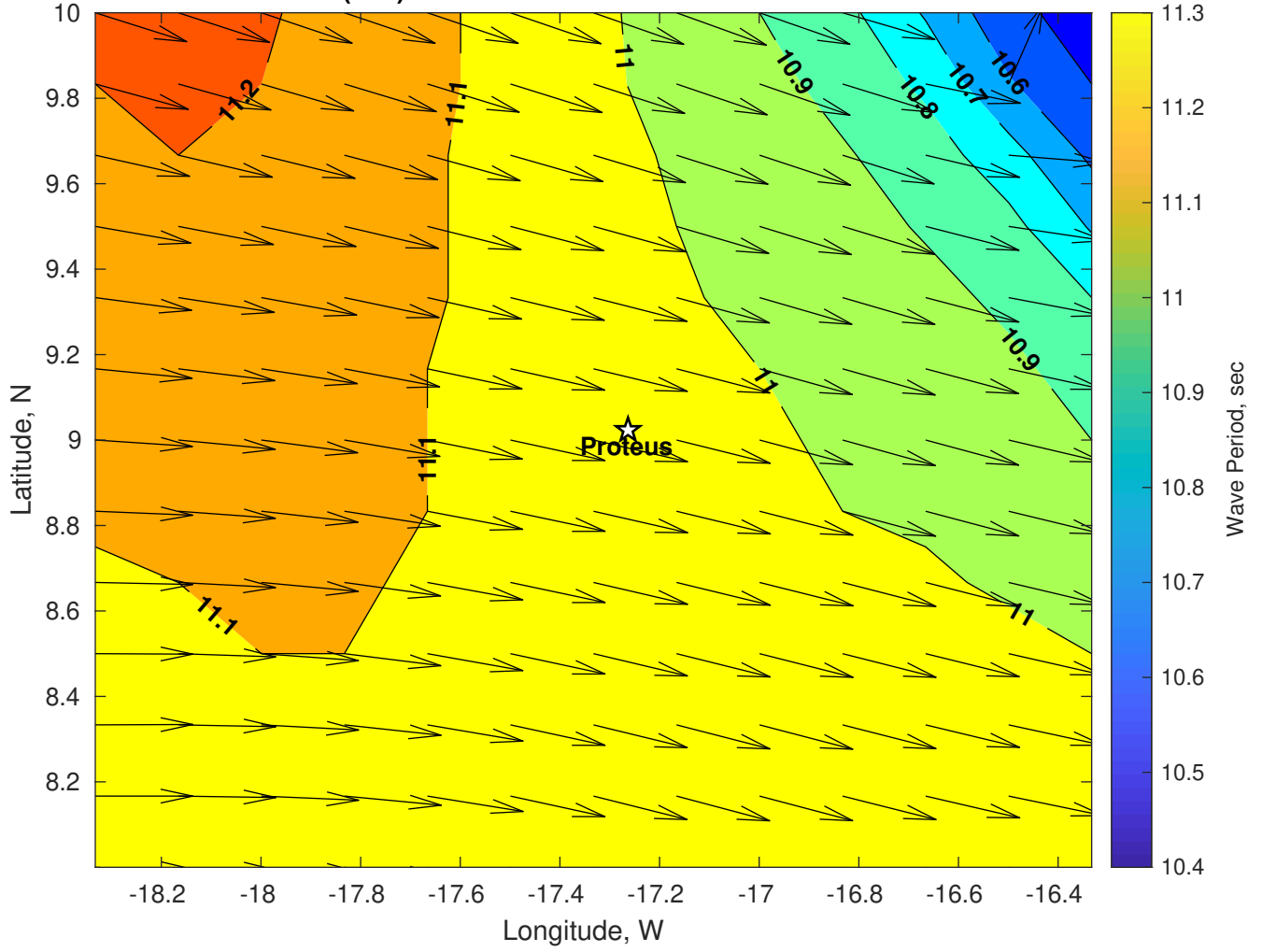
**Met Forecast for Proteus from 06-Jan-2025 00:00:00 to 13-Jan-2025 00:00:00**



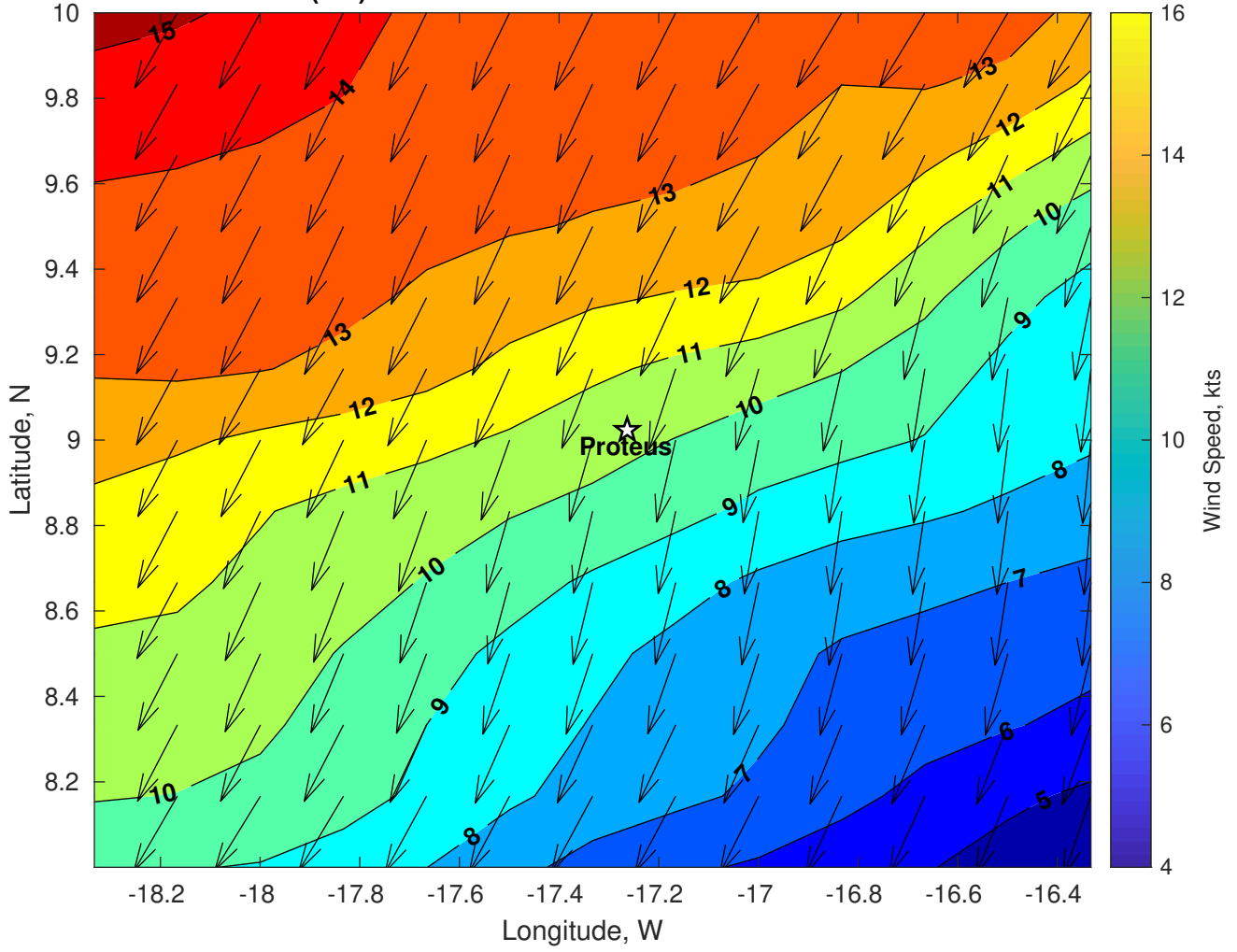
Wave Height (ft) for Proteus at 06-Jan-2025 09:00:00



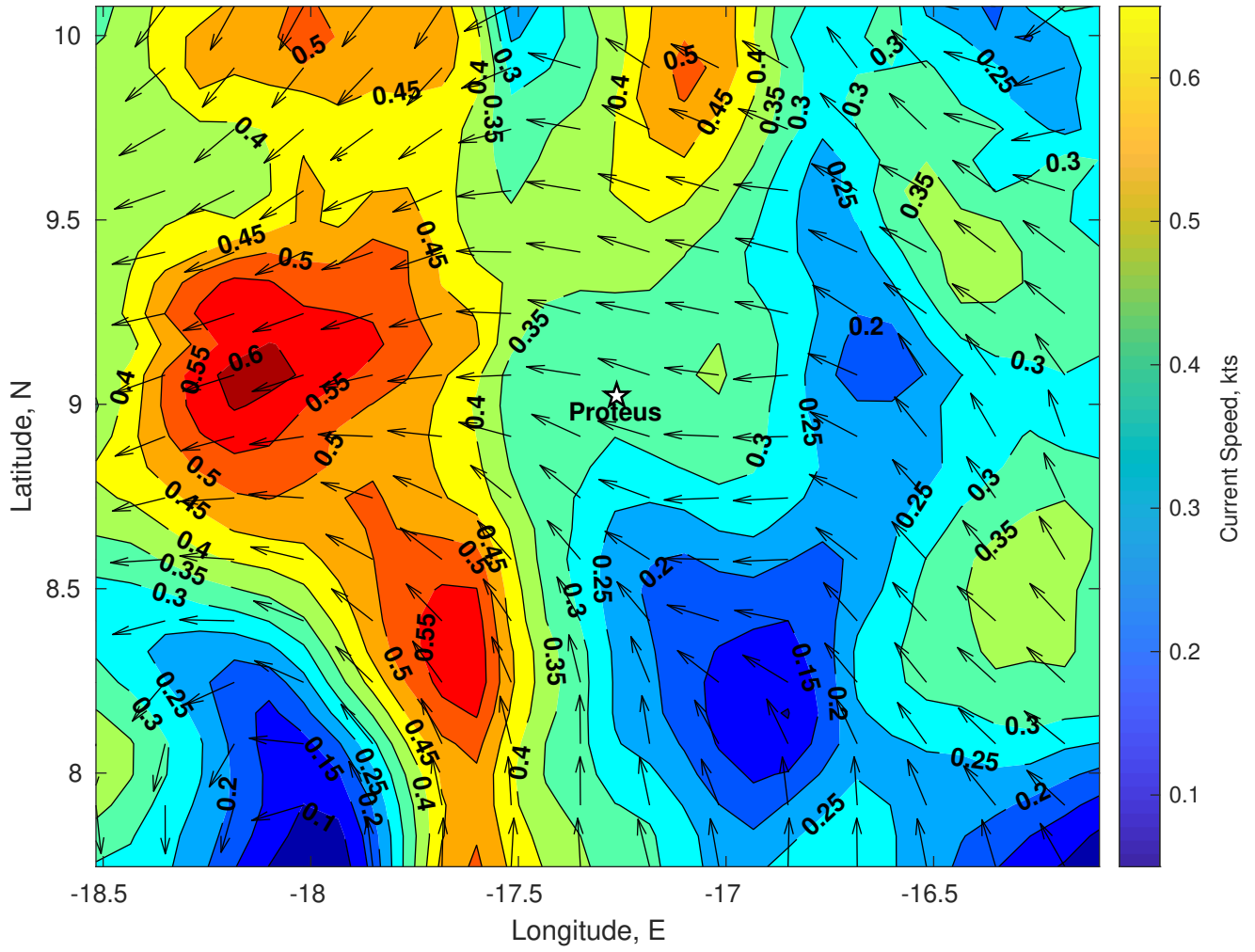
Wave Period (sec) for Proteus at 06-Jan-2025 09:00:00



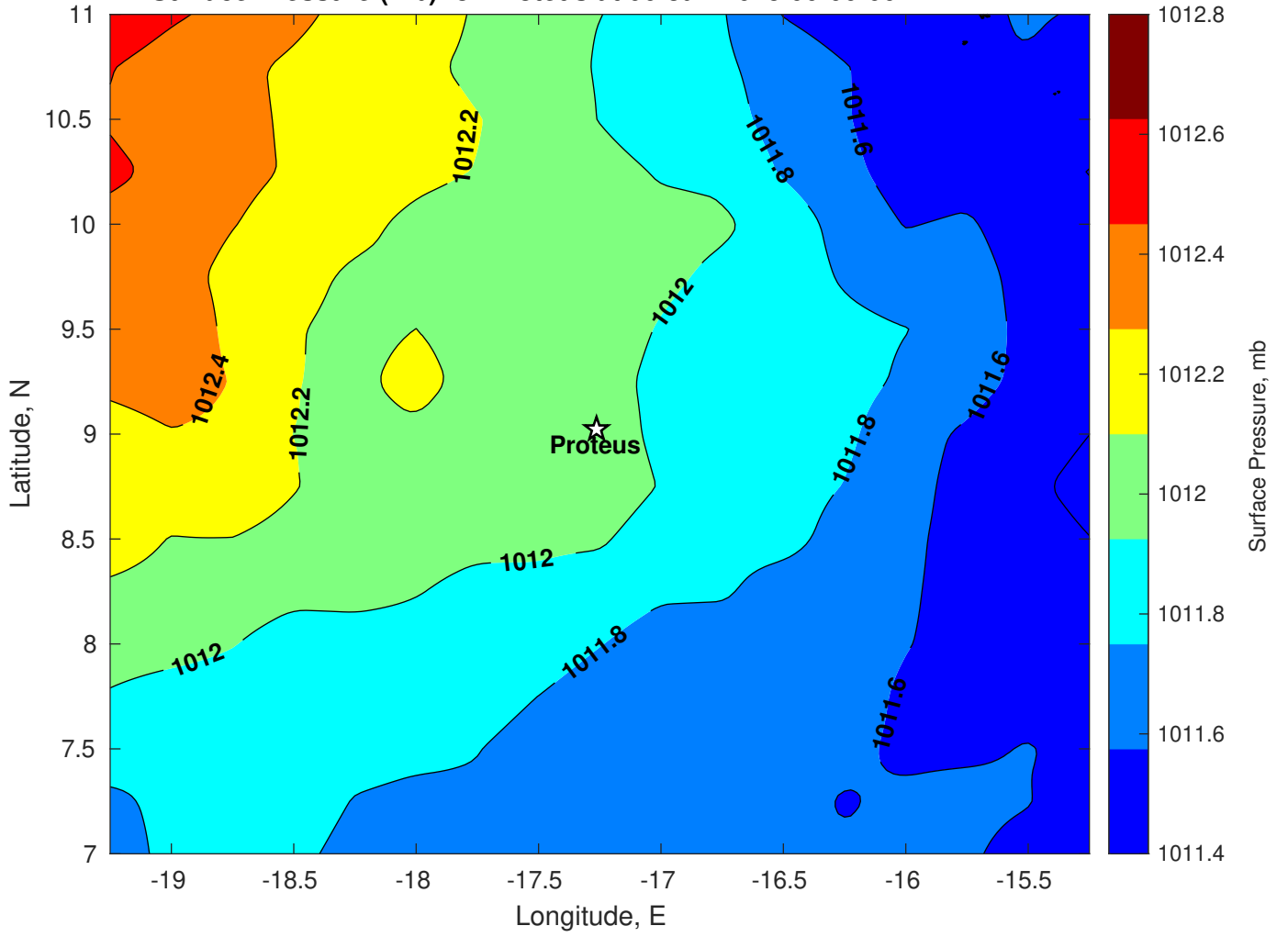
**Winds (kts) for Proteus at 06-Jan-2025 09:00:00**



Surface Currents for Proteus at 05-Jan-2025 00:00:00

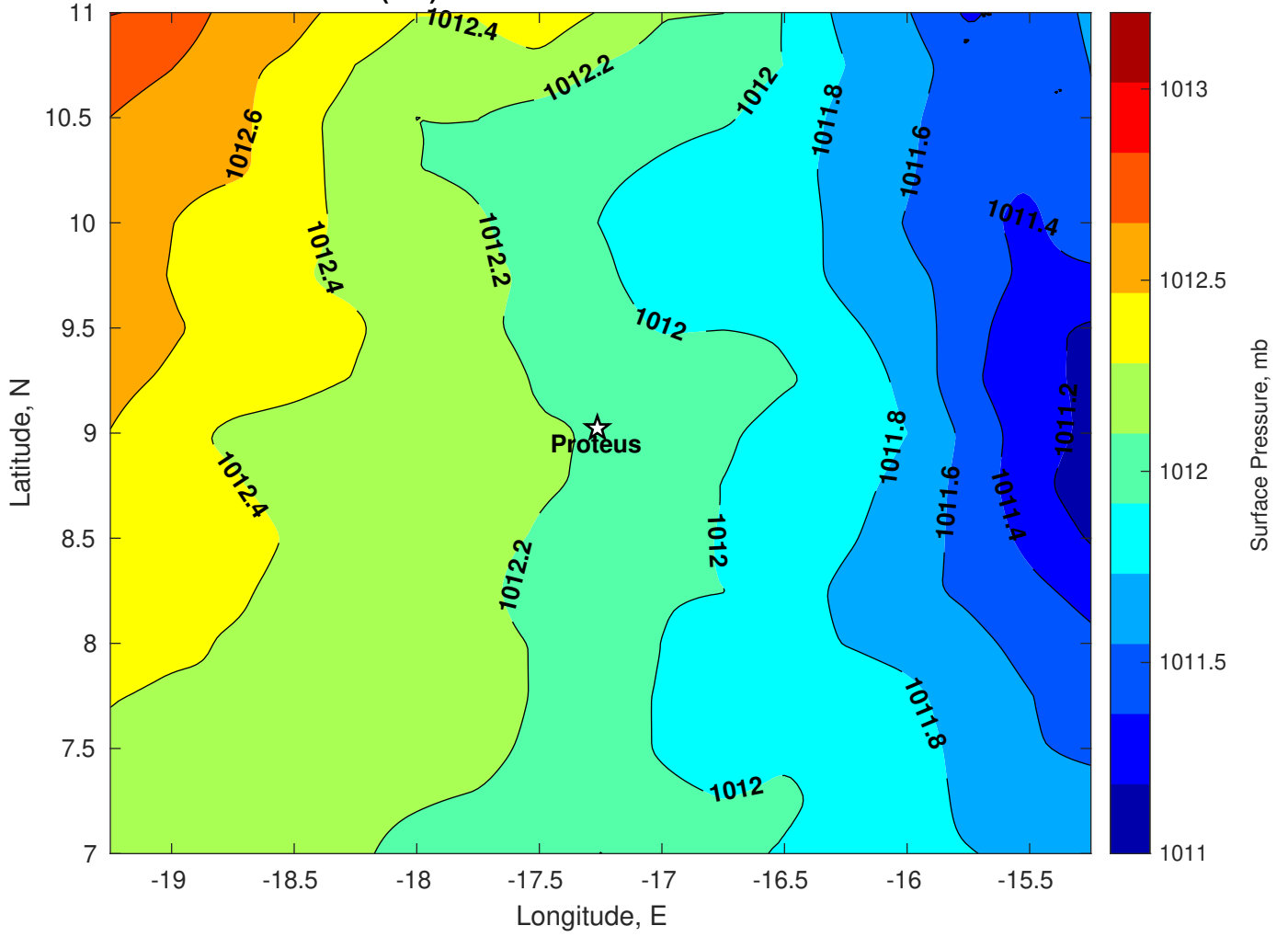


Surface Pressure (mb) for Proteus at 06-Jan-2025 00:00:00

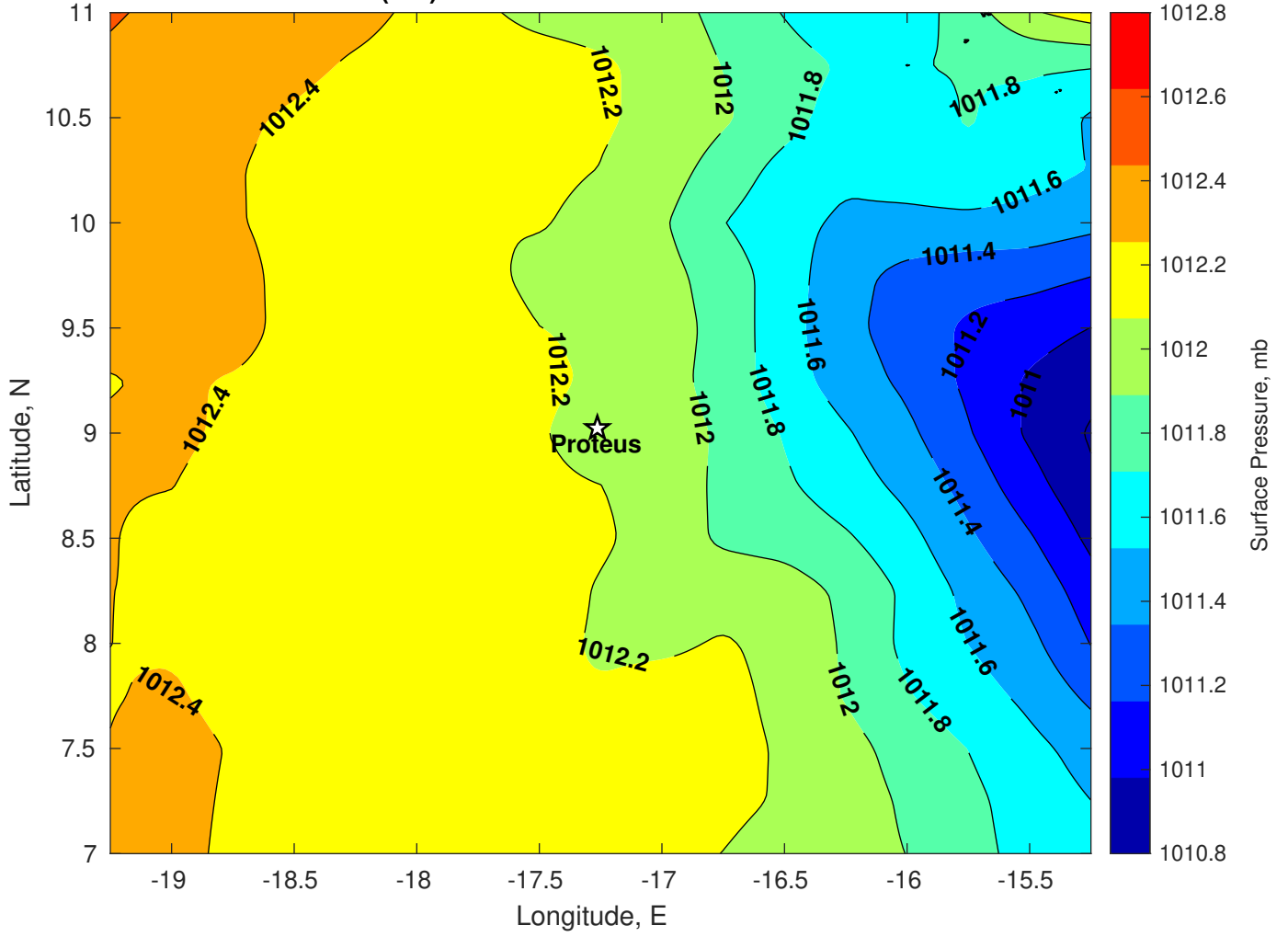




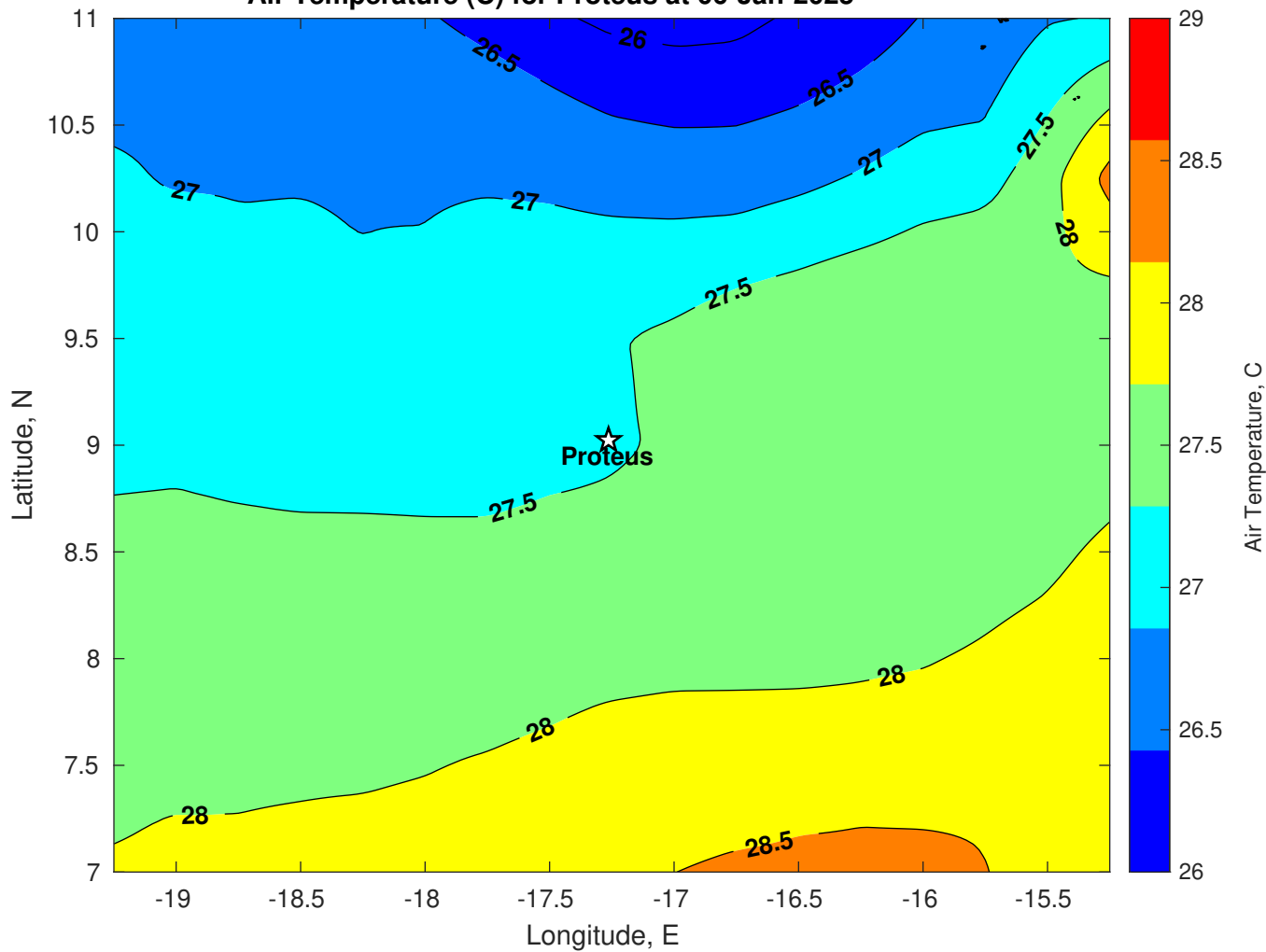
Surface Pressure (mb) for Proteus at 07-Jan-2025 00:00:00



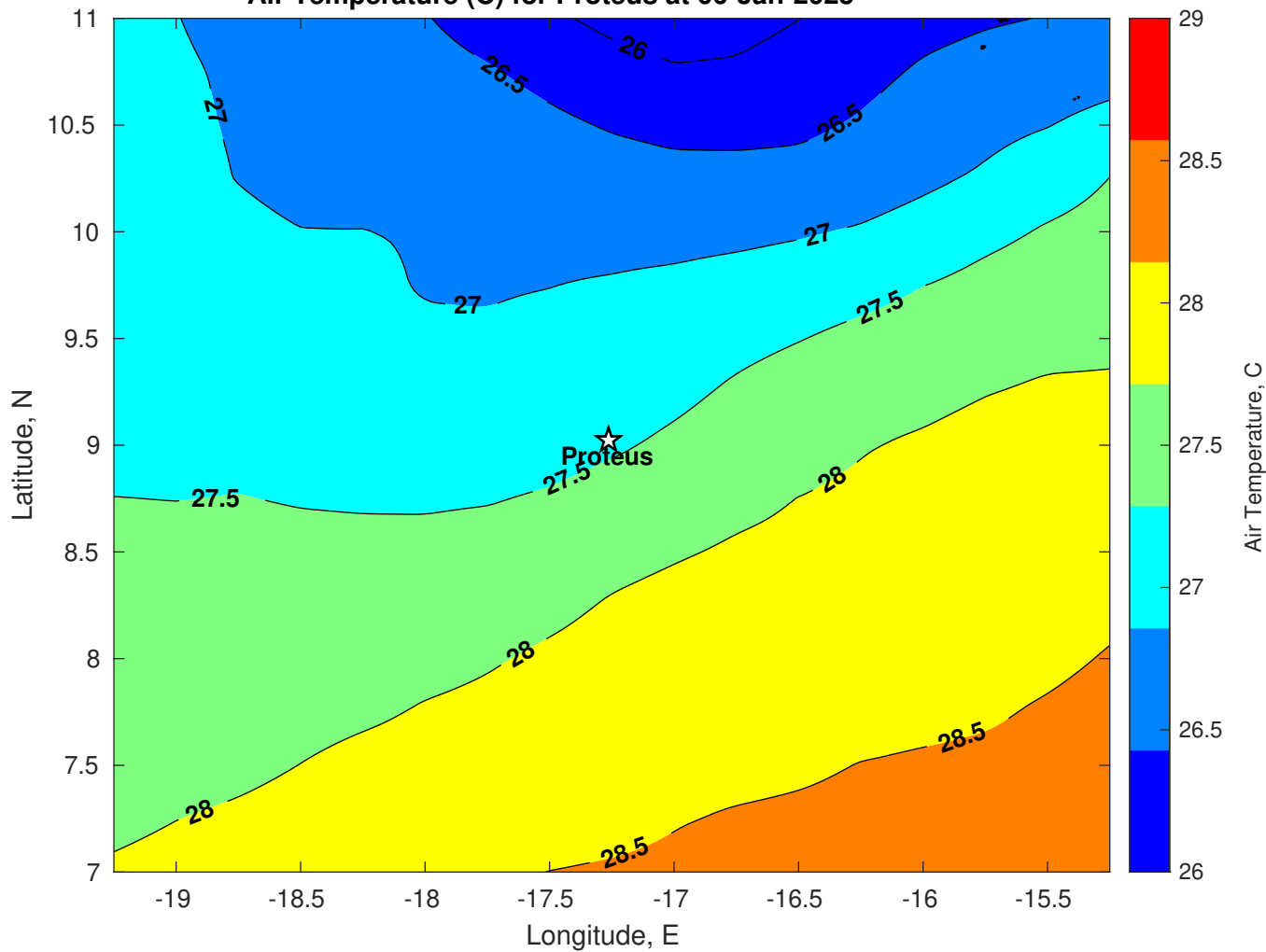
Surface Pressure (mb) for Proteus at 08-Jan-2025 00:00:00



Air Temperature (C) for Proteus at 06-Jan-2025



Air Temperature (C) for Proteus at 06-Jan-2025



Air Temperature (C) for Proteus at 06-Jan-2025

