

\*\*\*\*\*

Marine Weather Forecast for Nautilus  
Forecast valid as of 09-Jan-2025 0900 GMT  
\*\*\*\*\*

All times are local.

Today

Winds: NE, 15-20 kts.  
Waves: N, 4-5 feet, 12-13 sec.  
No currents available.

Tonight

Winds: NE, 10-15 kts.  
Waves: N, 4-5 feet, 11-12 sec.  
No currents available.

Friday

Winds: NE, 10-15 kts.  
Waves: N, 3-4 feet, 10-11 sec.  
No currents available.

Friday Night

Winds: NE, 10-15 kts.  
Waves: N, 3-4 feet, 10-11 sec.  
No currents available.

Saturday

Winds: NE, 10-15 kts.  
Waves: NW, 4-5 feet, 16-17 sec.  
No currents available.

Saturday Night

Winds: NE, 10-15 kts.  
Waves: NW, 4-5 feet, 15-16 sec.  
No currents available.

Sunday

Winds: NE, 10-15 kts.  
Waves: NW, 4-5 feet, 14-15 sec.  
No currents available.

Sunday Night

Winds: NE, 10-15 kts.  
Waves: NW, 4-5 feet, 14-15 sec.  
No currents available.

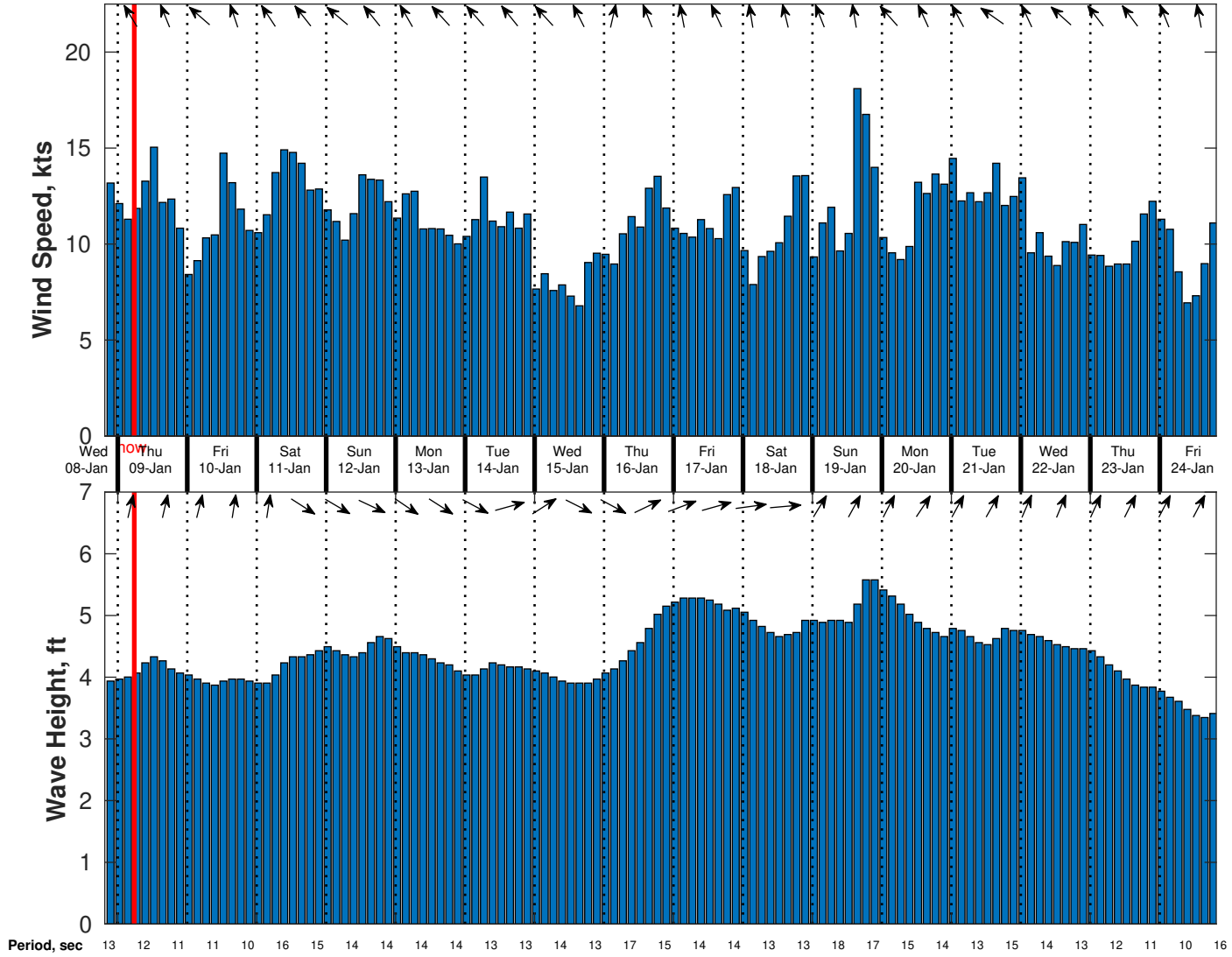
Monday

Winds: NE, 10-15 kts.  
Waves: NW, 4-5 feet, 14-15 sec.  
No currents available.

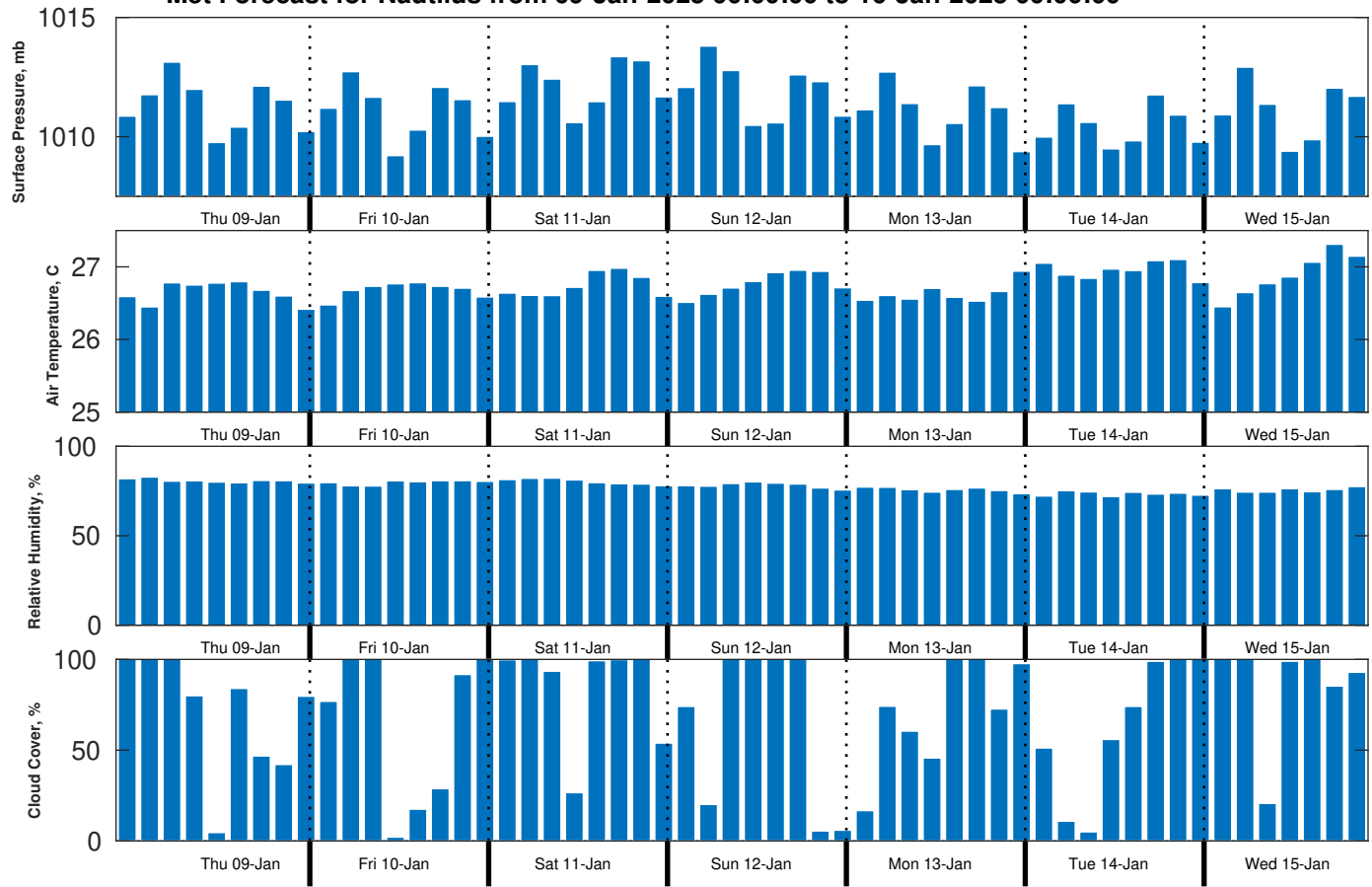
Monday Night

Winds: NE, 10-15 kts.  
Waves: NW, 4-5 feet, 13-14 sec.  
No currents available.

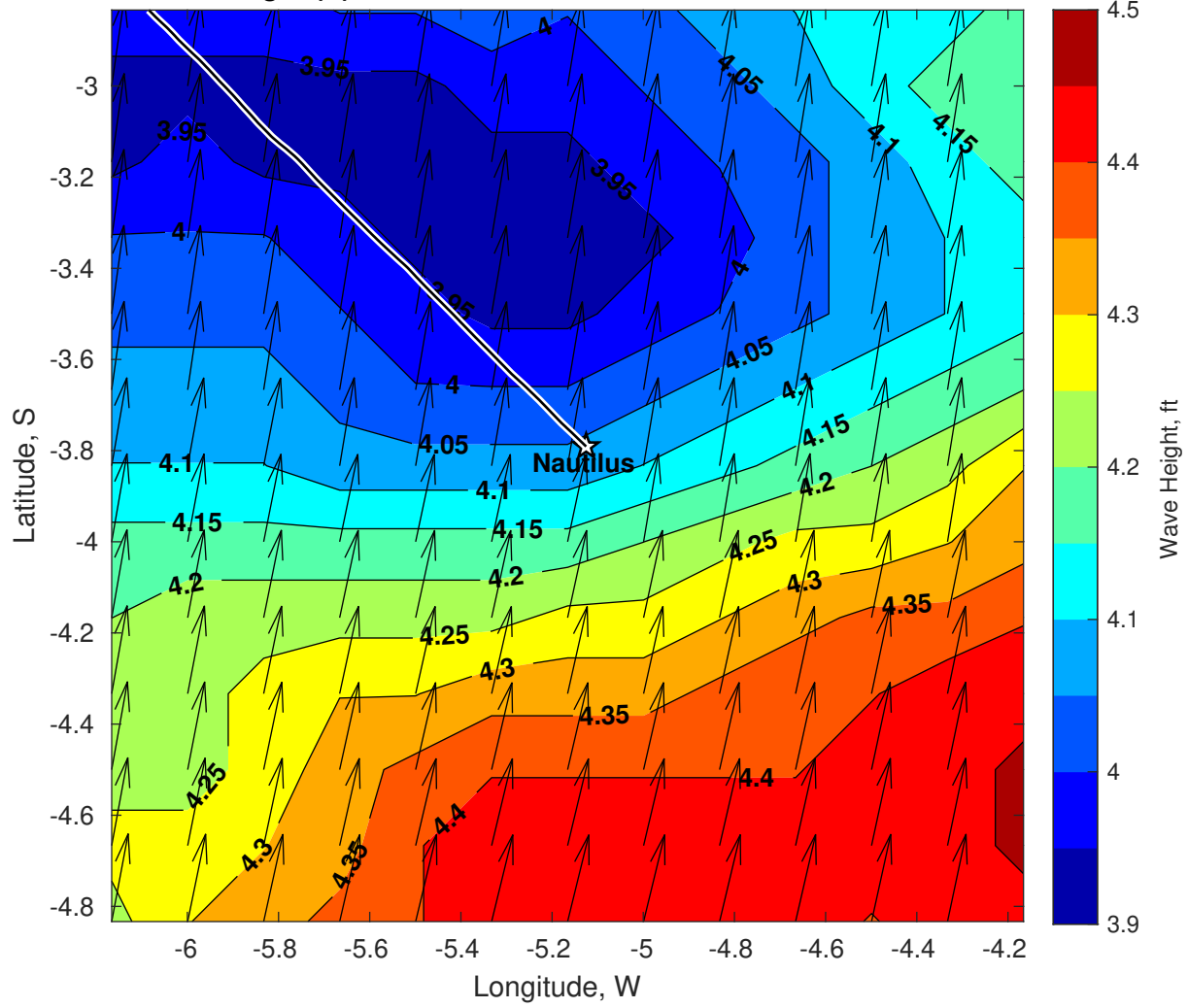
Wind & Wave Forecast for Nautilus from 08-Jan-2025 20:00:00 to 24-Jan-2025 20:00:00



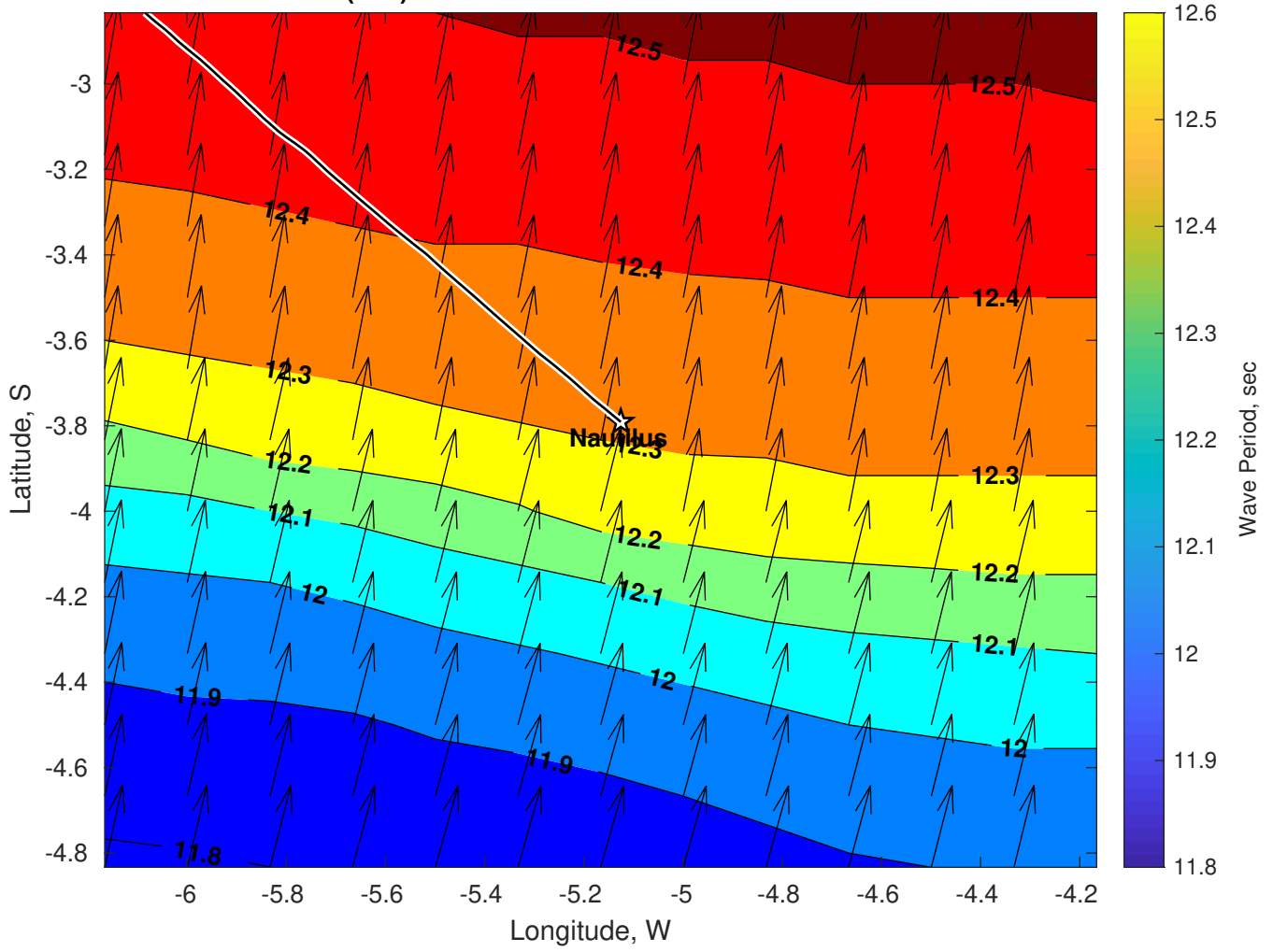
### Met Forecast for Nautilus from 09-Jan-2025 00:00:00 to 16-Jan-2025 00:00:00



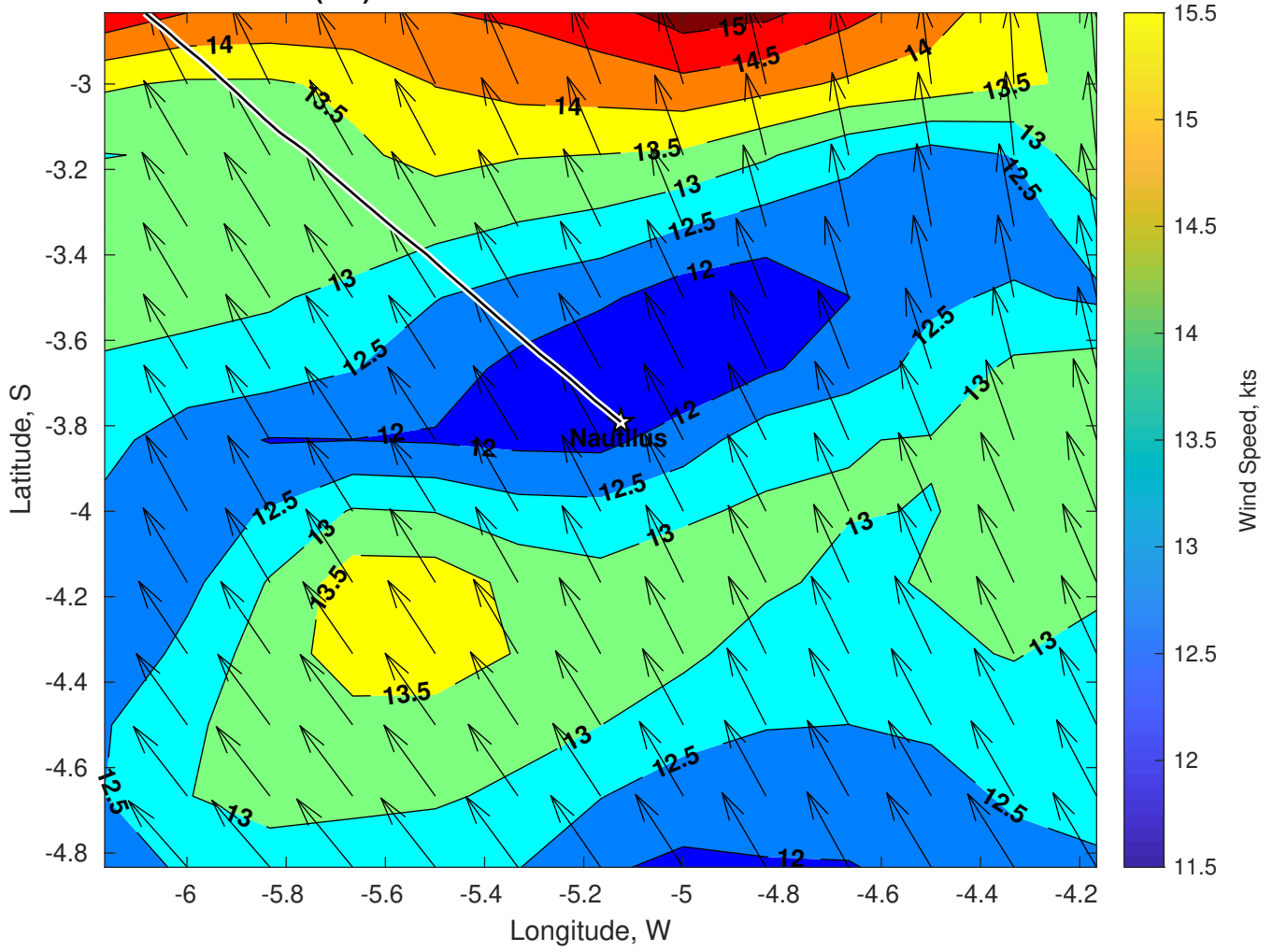
Wave Height (ft) for Nautilus at 09-Jan-2025 09:00:00



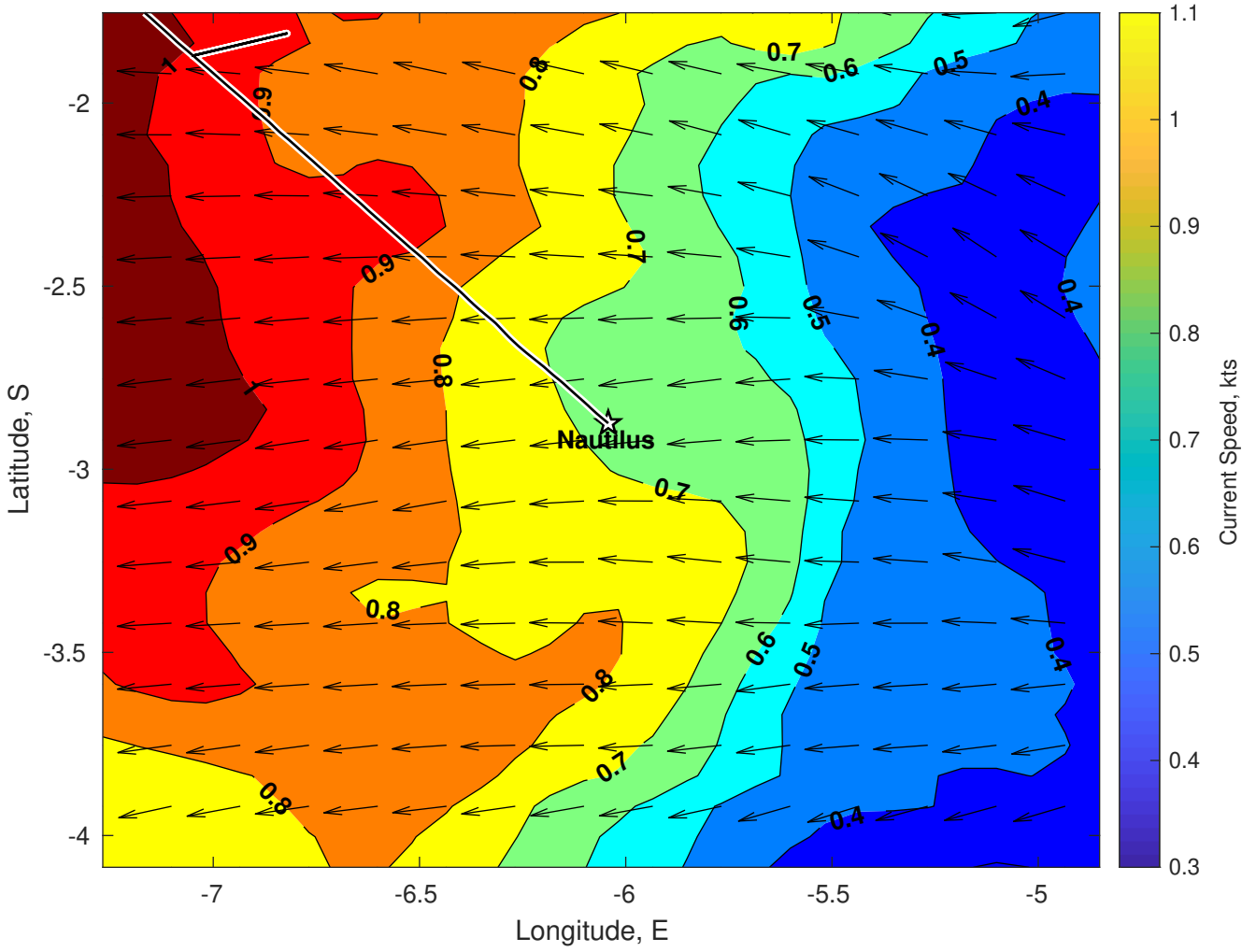
Wave Period (sec) for Nautilus at 09-Jan-2025 09:00:00



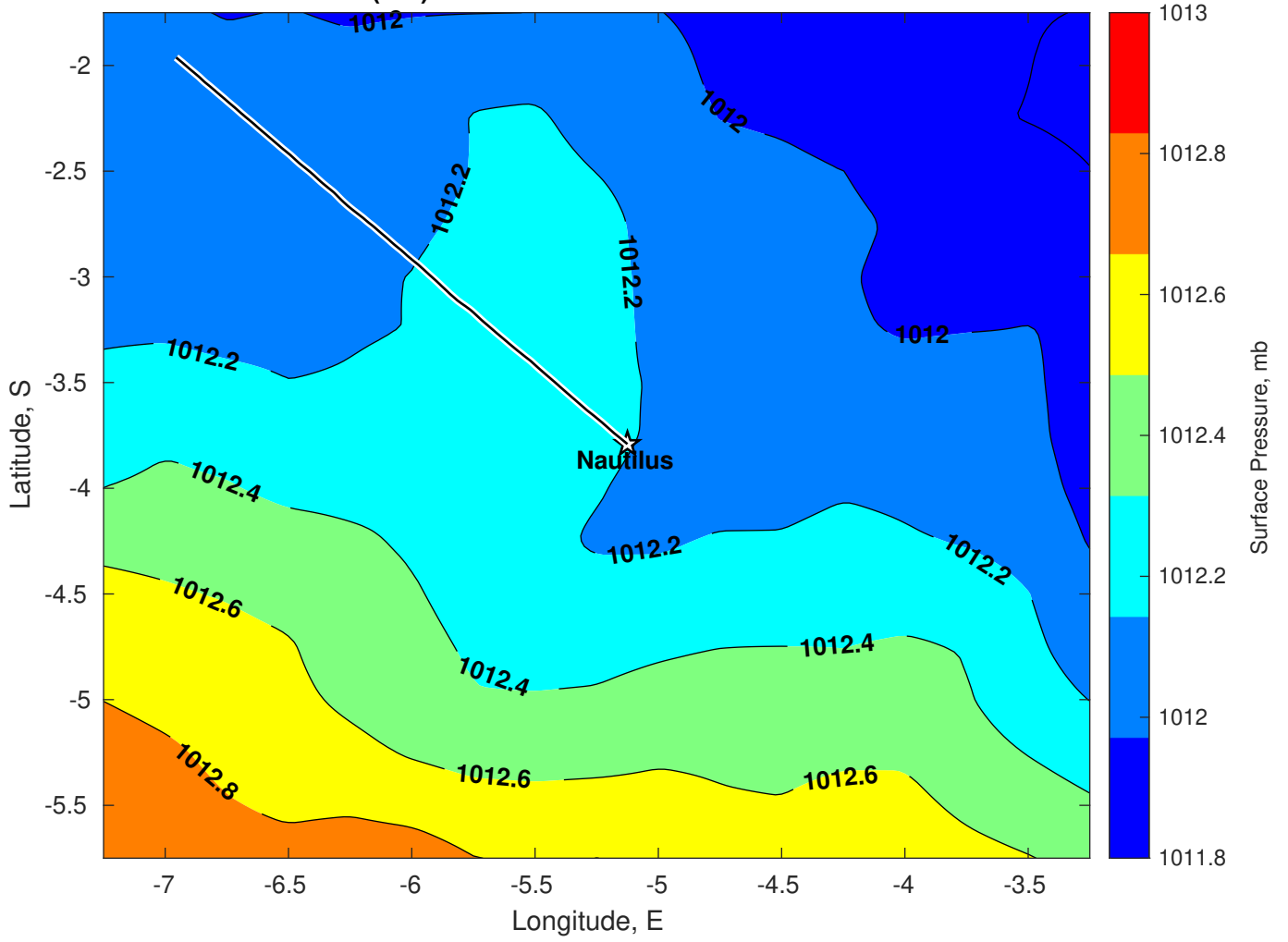
Winds (kts) for Nautilus at 09-Jan-2025 09:00:00



Surface Currents for Nautilus at 08-Jan-2025 00:00:00

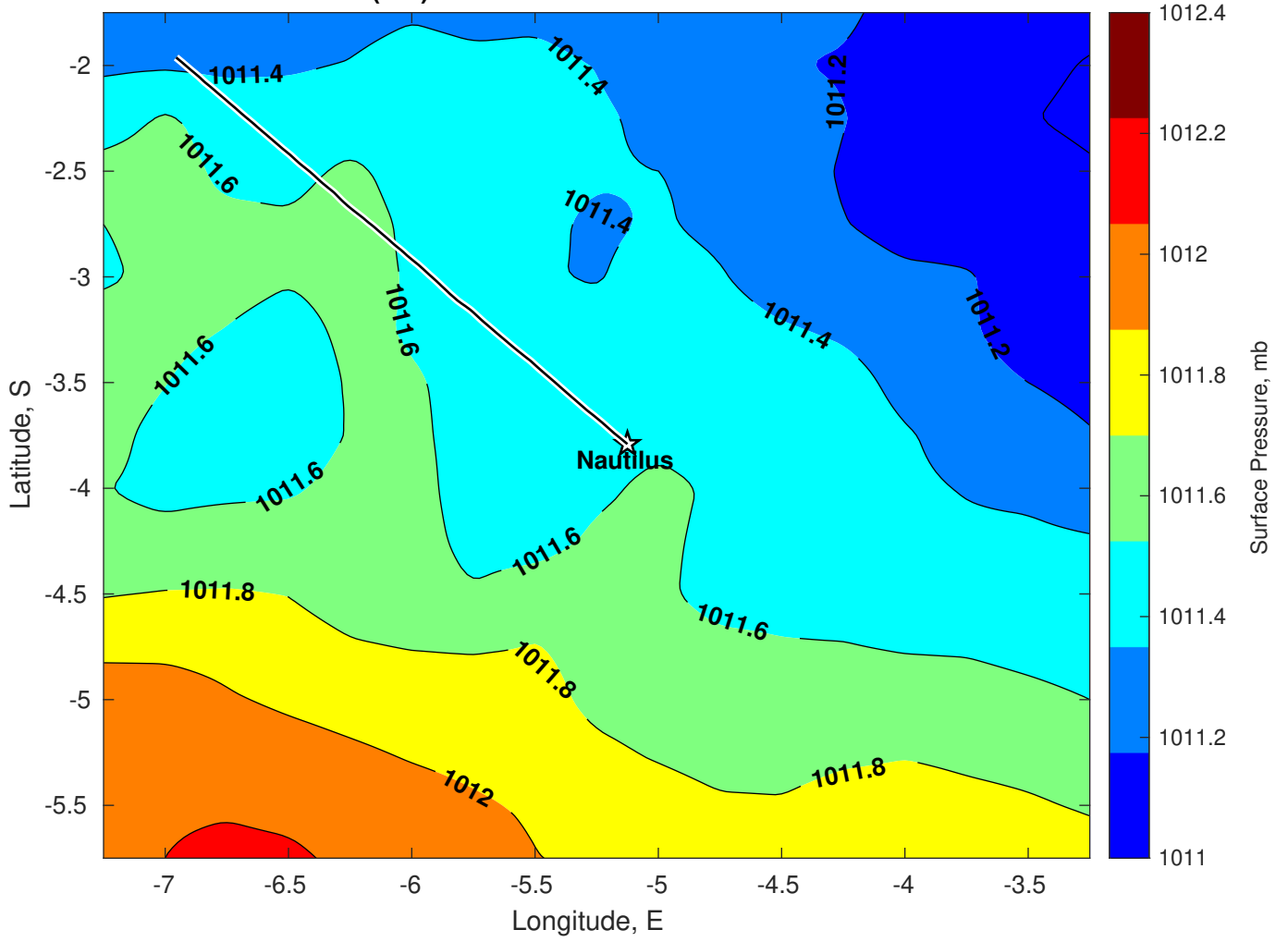


Surface Pressure (mb) for Nautilus at 09-Jan-2025 00:00:00

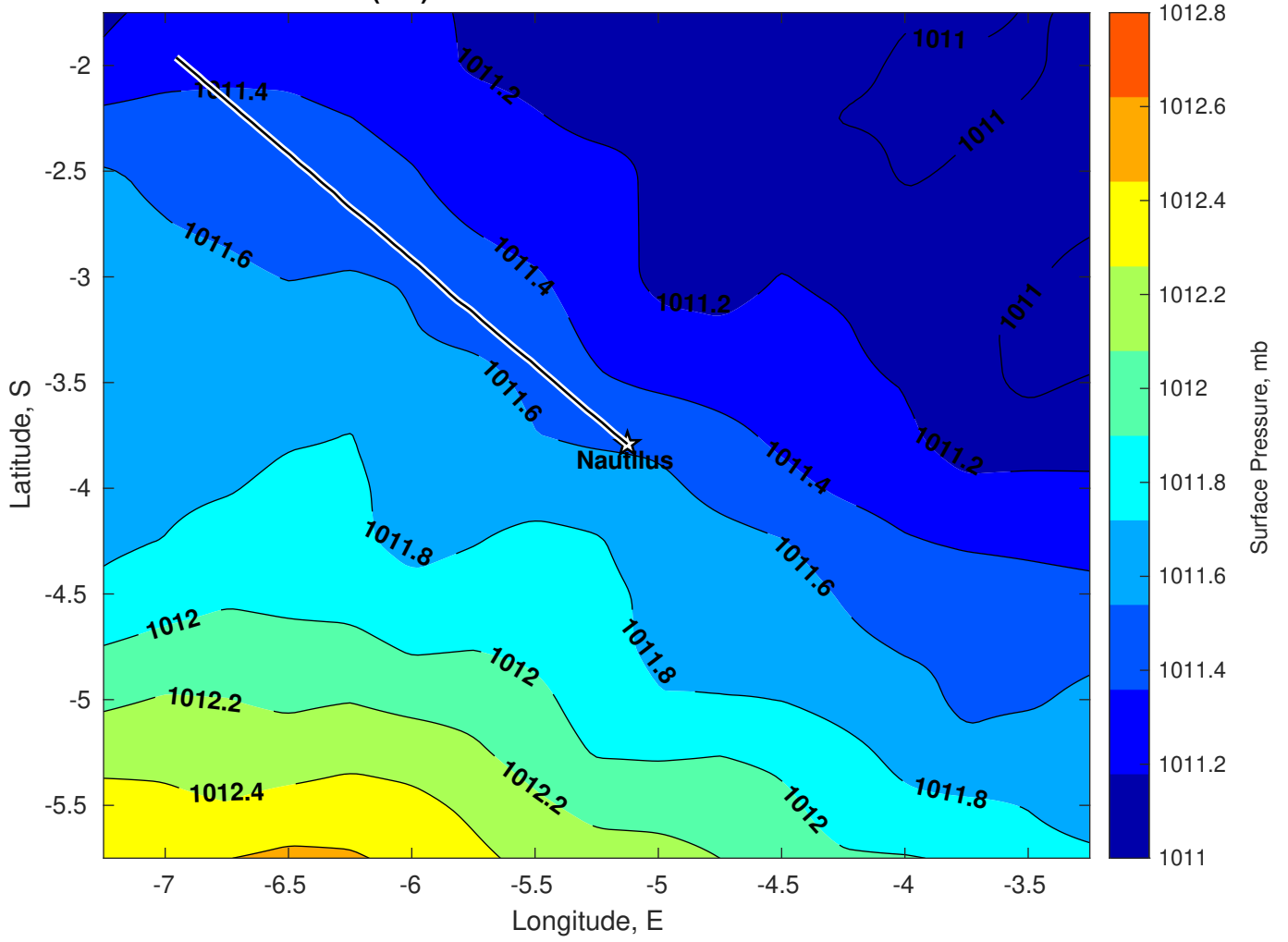




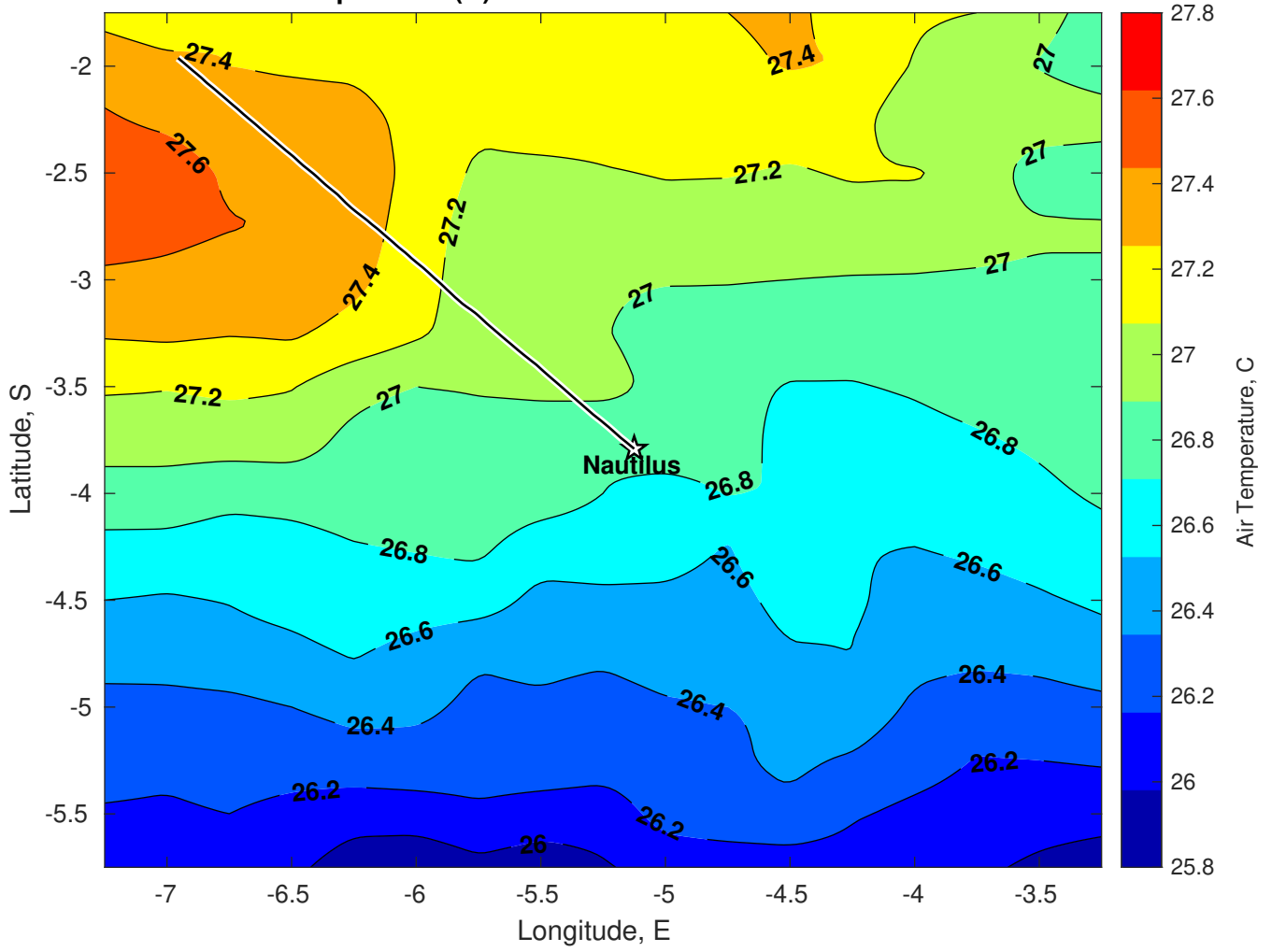
Surface Pressure (mb) for Nautilus at 10-Jan-2025 00:00:00



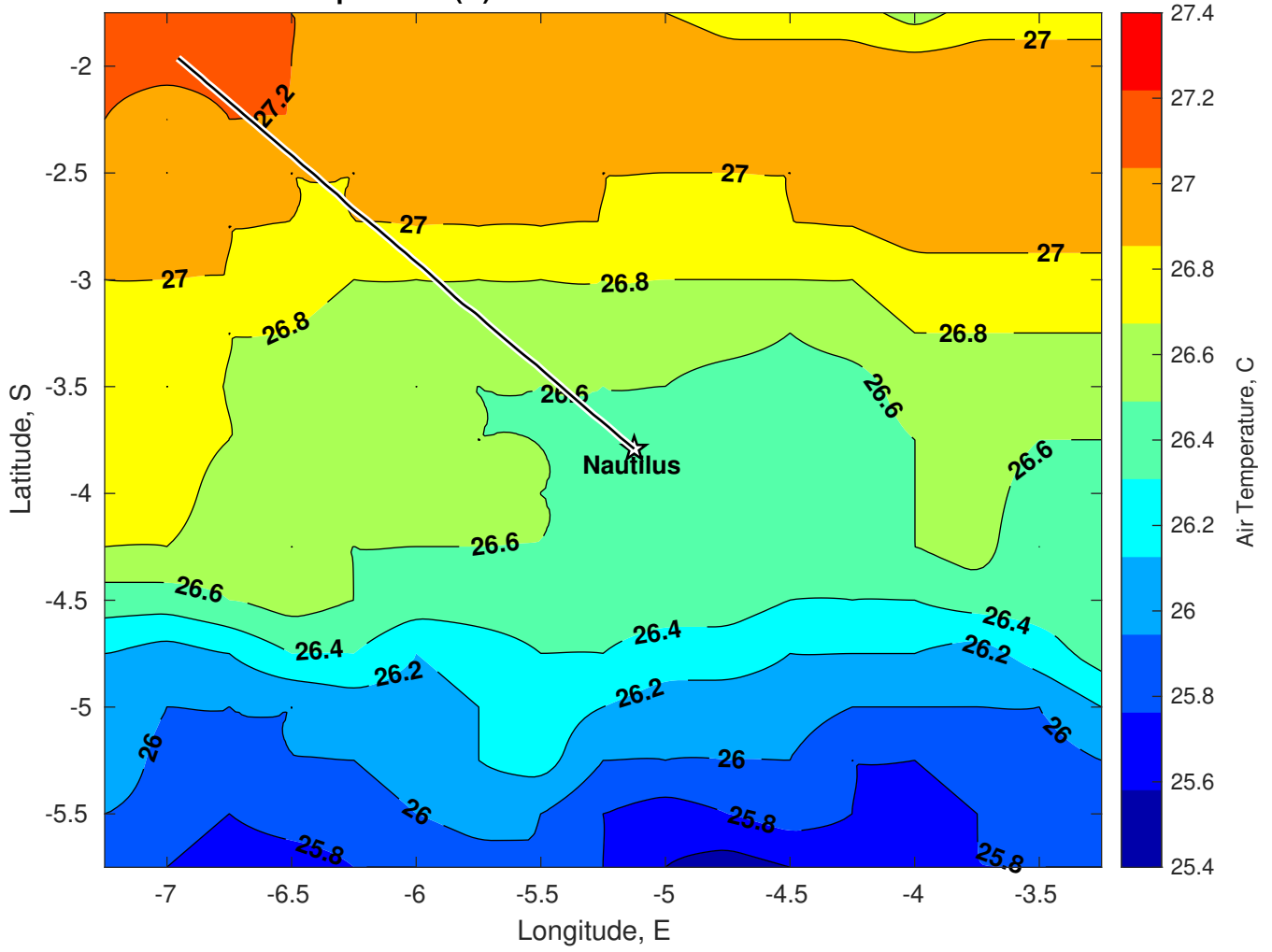
Surface Pressure (mb) for Nautilus at 11-Jan-2025 00:00:00



Air Temperature (C) for Nautilus at 09-Jan-2025



Air Temperature (C) for Nautilus at 09-Jan-2025



Air Temperature (C) for Nautilus at 09-Jan-2025

