

\*\*\*\*\*  
Marine Weather Forecast for Proteus  
Forecast valid as of 09-Jan-2025 0900 GMT  
\*\*\*\*\*

All times are local.

Today

Winds: NE, 5-10 kts.  
Waves: NW, 4-5 feet, 16-17 sec.  
No currents available.

Tonight

Winds: NE, 5-10 kts.  
Waves: NW, 4-5 feet, 15-16 sec.  
No currents available.

Friday

Winds: E, 5-10 kts.  
Waves: NW, 5-6 feet, 15-16 sec.  
No currents available.

Friday Night

Winds: NE, 5-10 kts.  
Waves: NW, 5-6 feet, 14-15 sec.  
No currents available.

Saturday

Winds: N, 5-10 kts.  
Waves: NW, 4-5 feet, 13-14 sec.  
No currents available.

Saturday Night

Winds: NW, 5-10 kts.  
Waves: NW, 4-5 feet, 13-14 sec.  
No currents available.

Sunday

Winds: N, 5-10 kts.  
Waves: NW, 4-5 feet, 15-16 sec.  
No currents available.

Sunday Night

Winds: NW, 5-10 kts.  
Waves: NW, 4-5 feet, 14-15 sec.  
No currents available.

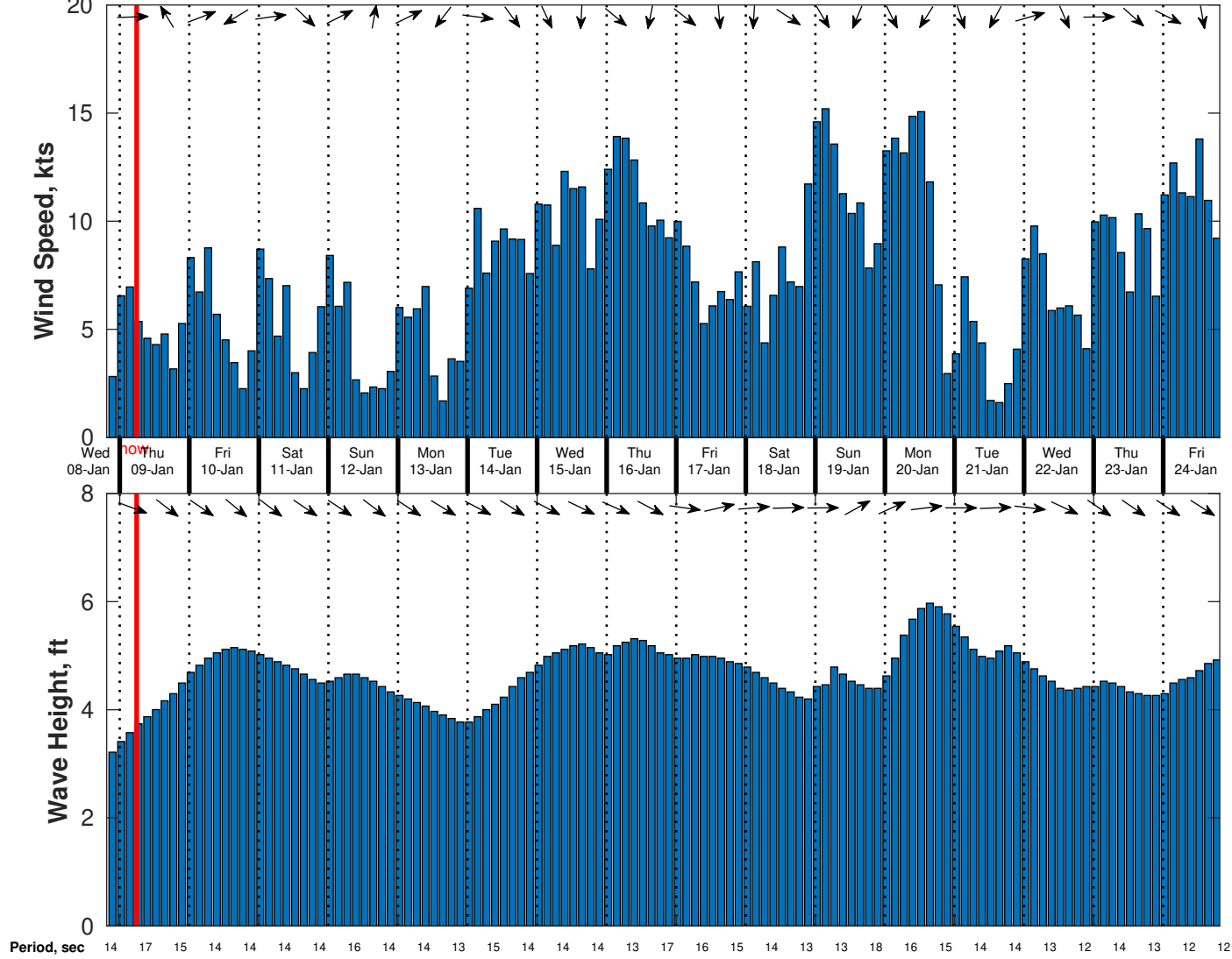
Monday

Winds: NE, 5-10 kts.  
Waves: NW, 4-5 feet, 13-14 sec.  
No currents available.

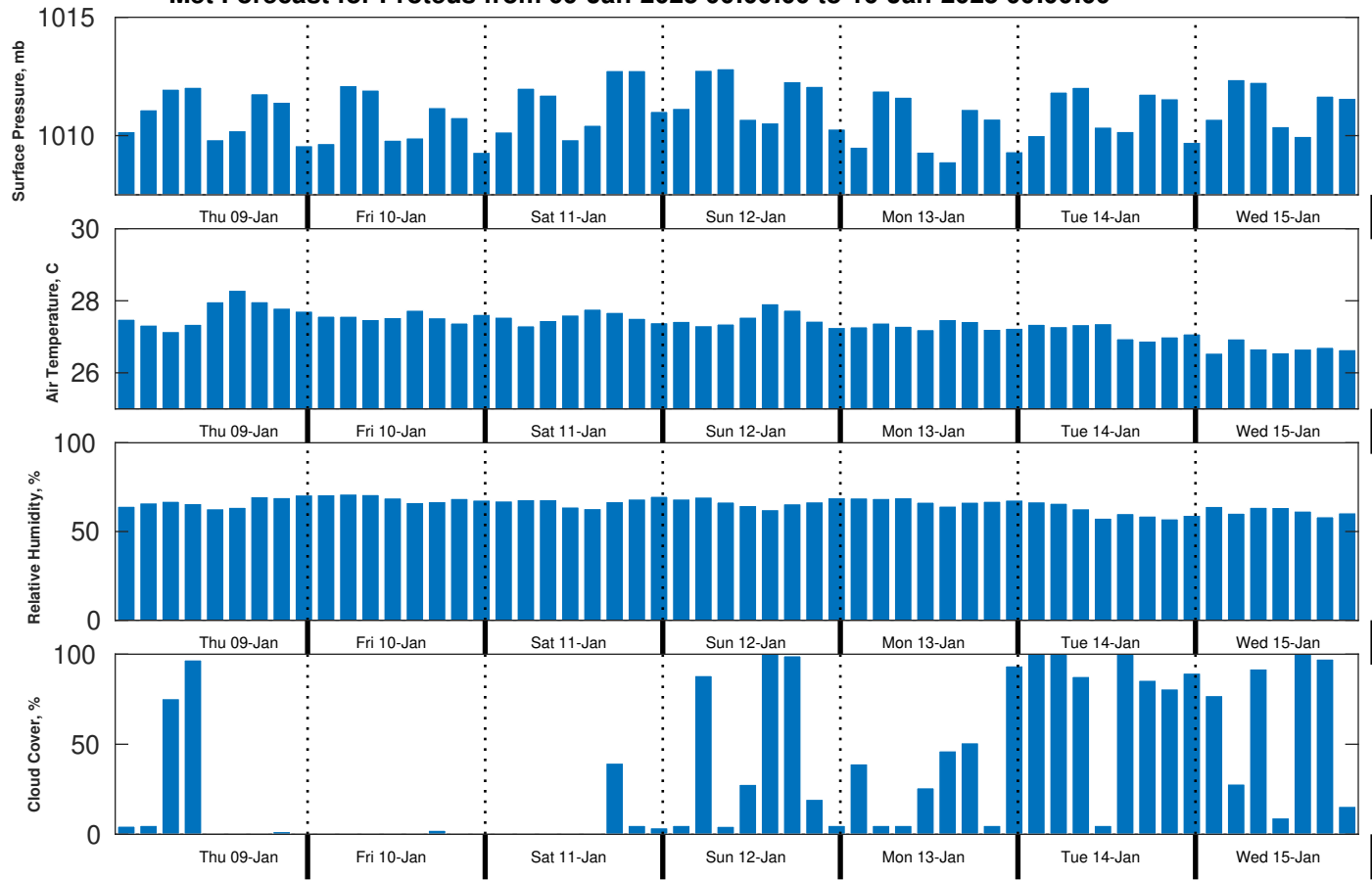
Monday Night

Winds: NW, 10-15 kts.  
Waves: NW, 3-4 feet, 13-14 sec.  
No currents available.

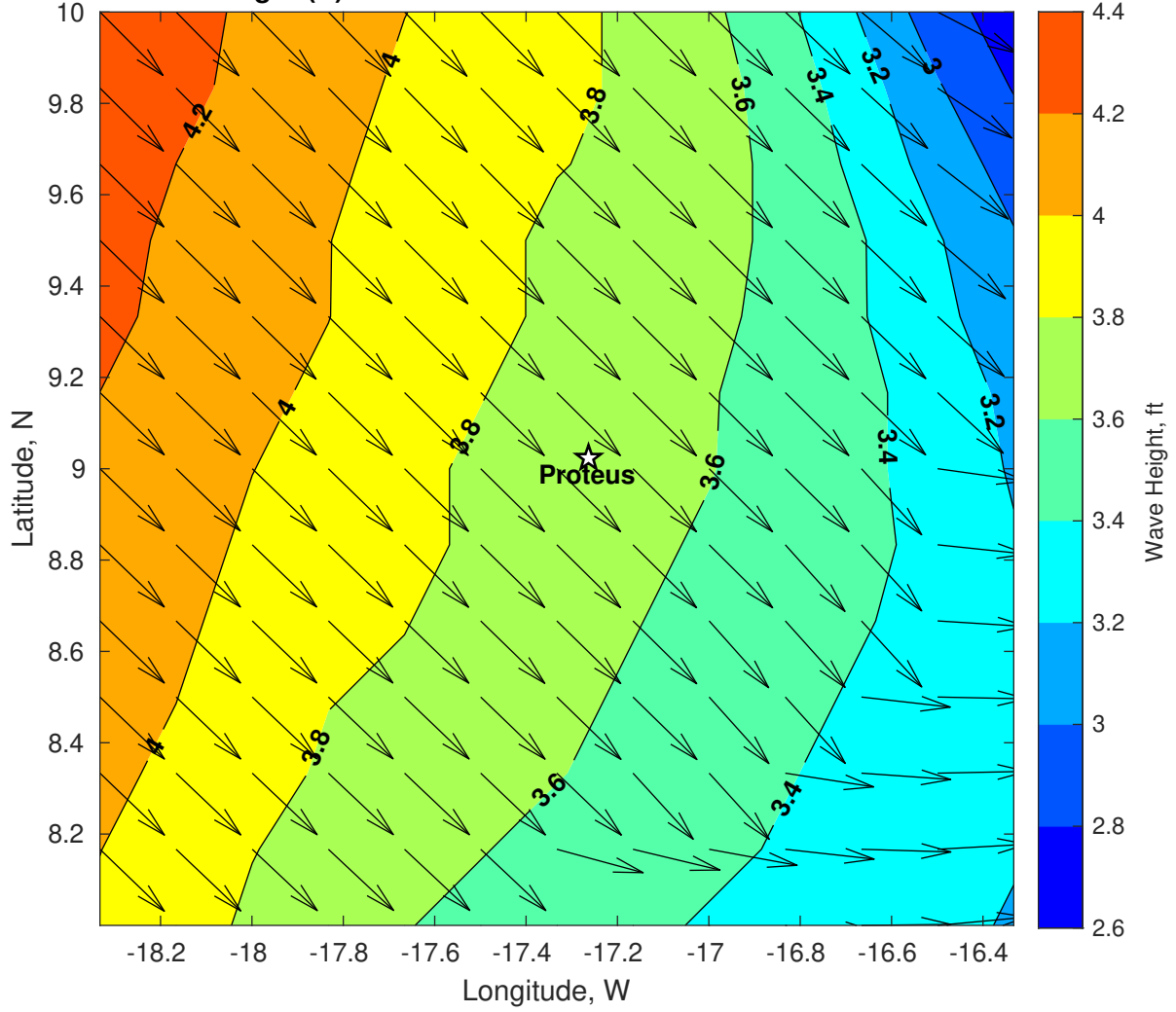
**Wind & Wave Forecast for Proteus from 08-Jan-2025 20:00:00 to 24-Jan-2025 20:00:00**



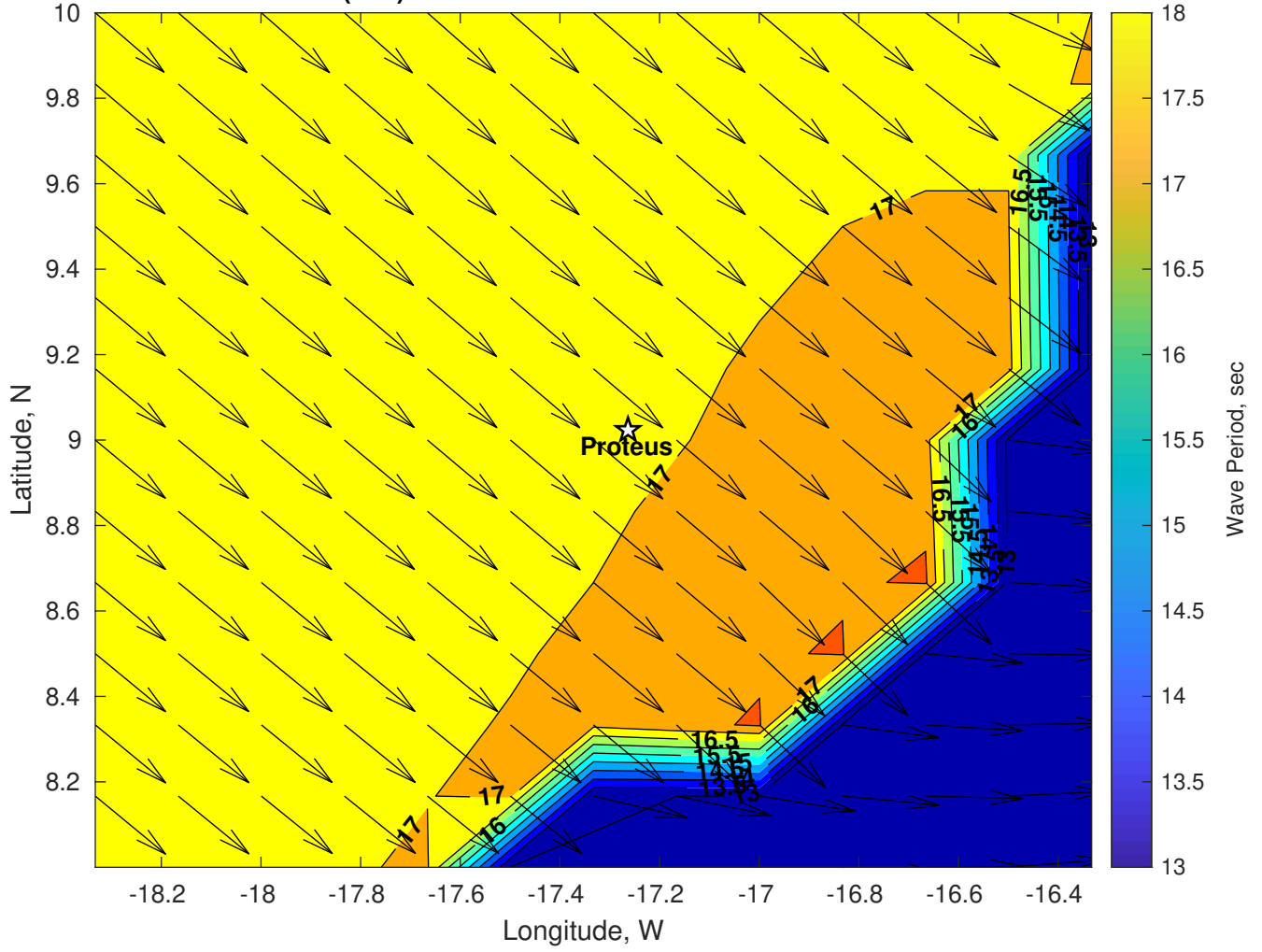
### Met Forecast for Proteus from 09-Jan-2025 00:00:00 to 16-Jan-2025 00:00:00



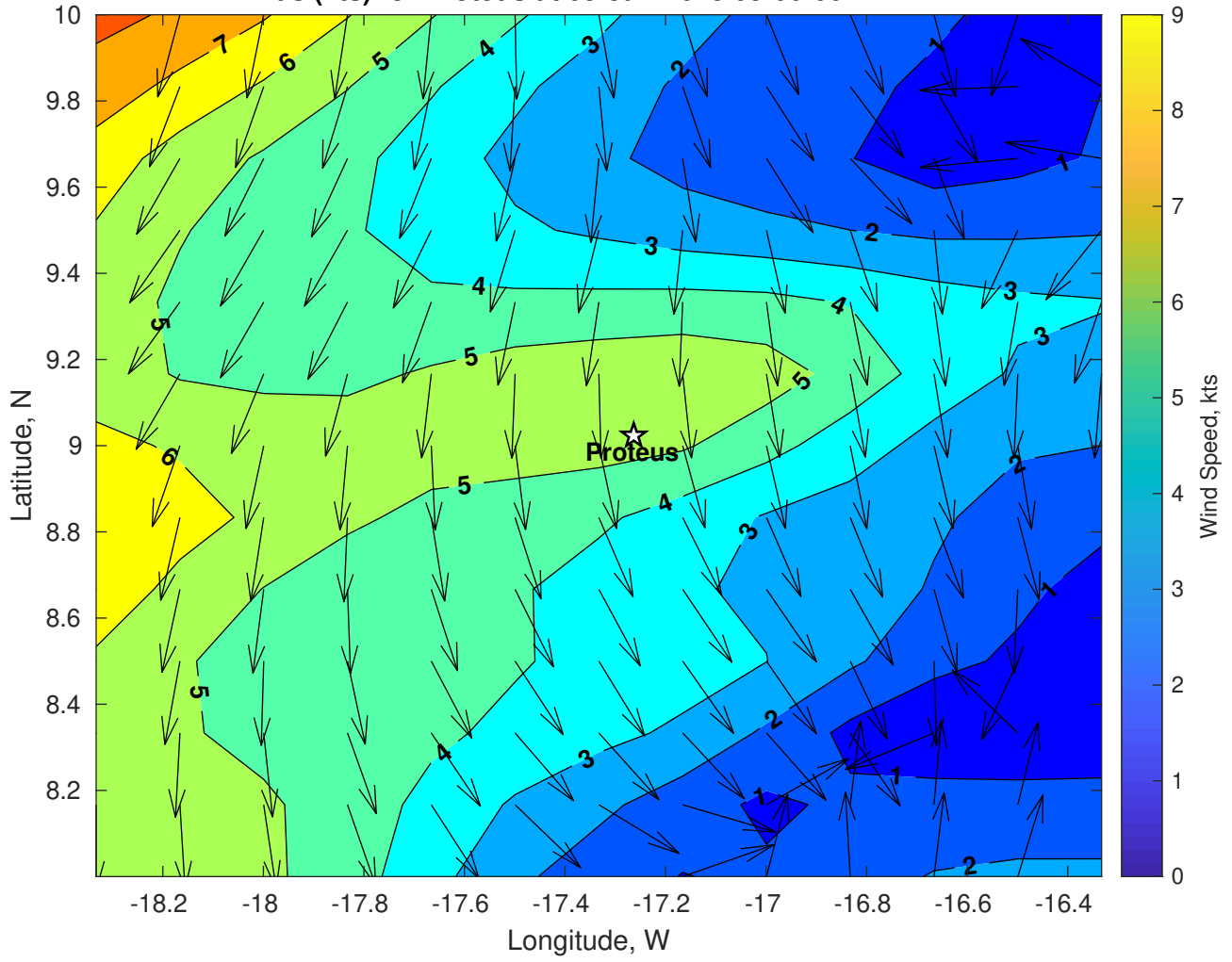
Wave Height (ft) for Proteus at 09-Jan-2025 09:00:00



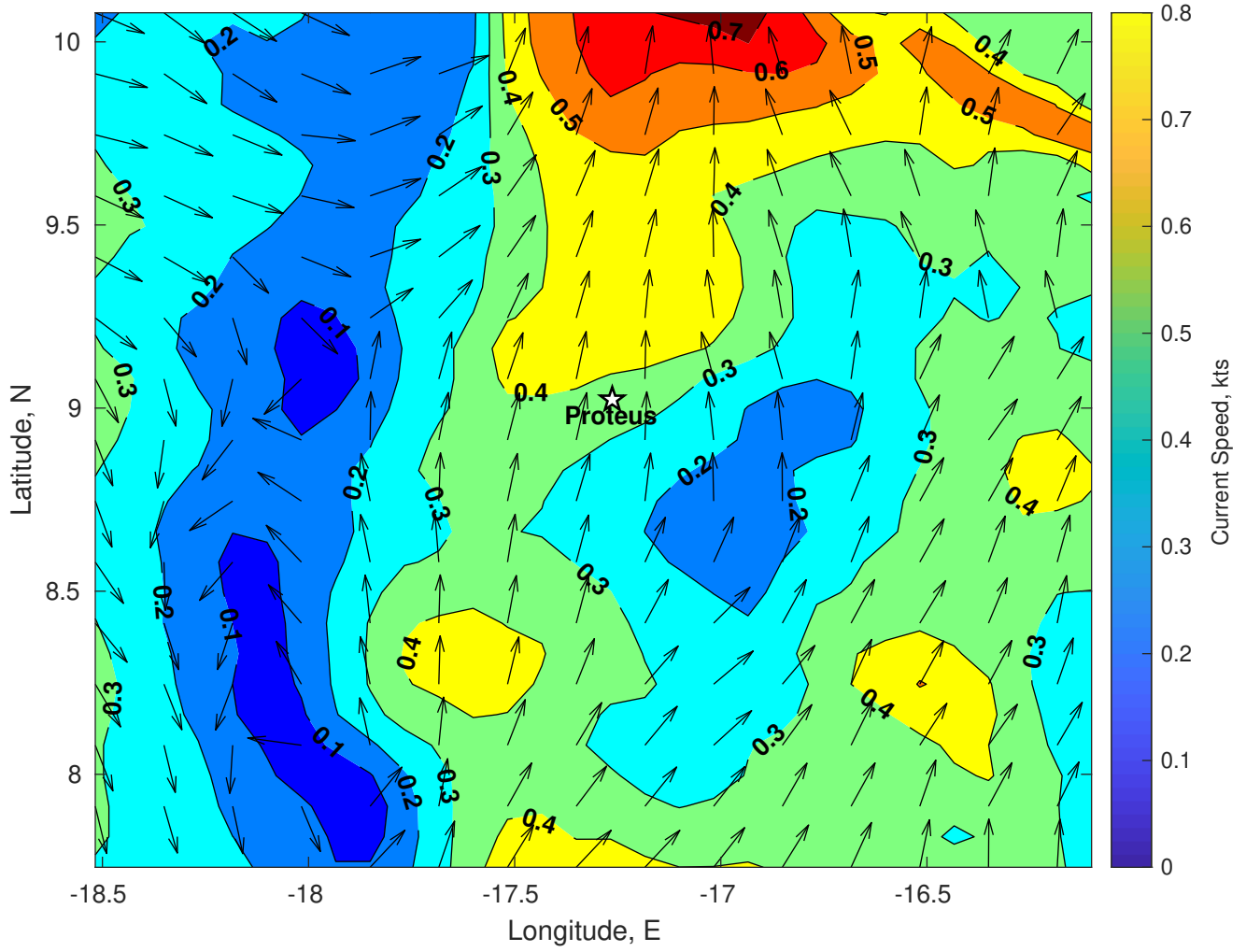
Wave Period (sec) for Proteus at 09-Jan-2025 09:00:00



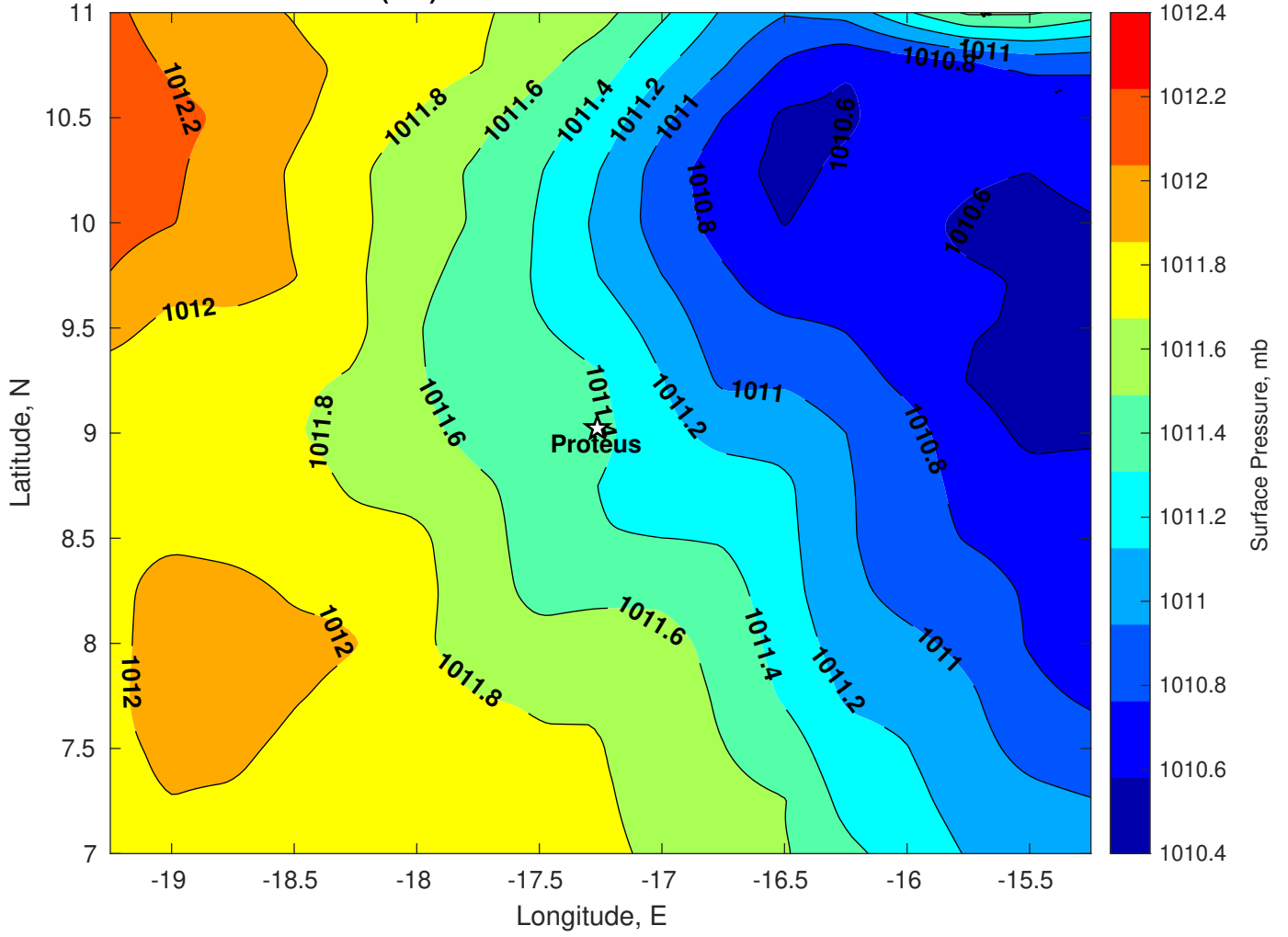
Winds (kts) for Proteus at 09-Jan-2025 09:00:00



Surface Currents for Proteus at 08-Jan-2025 00:00:00

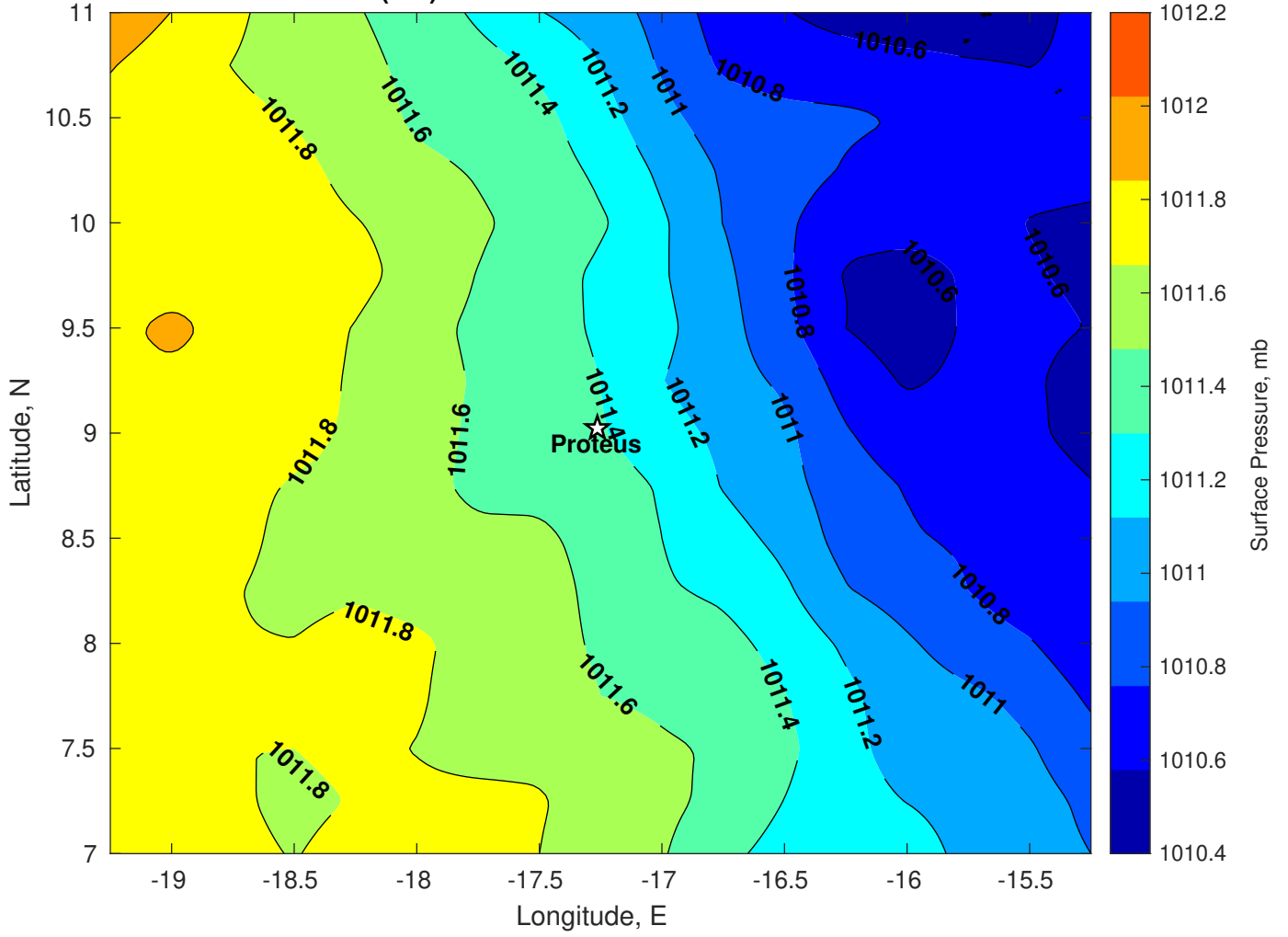


Surface Pressure (mb) for Proteus at 09-Jan-2025 00:00:00

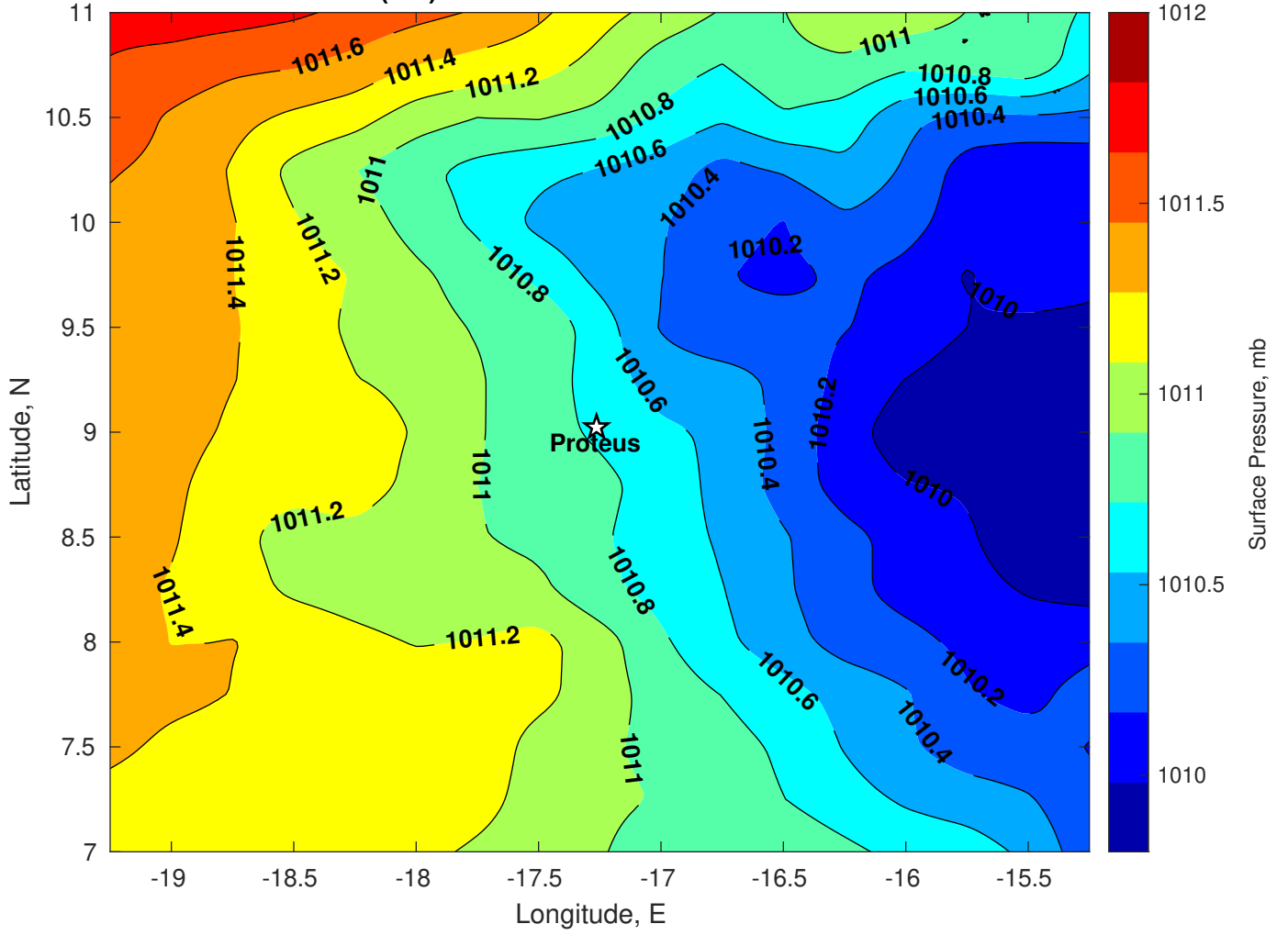




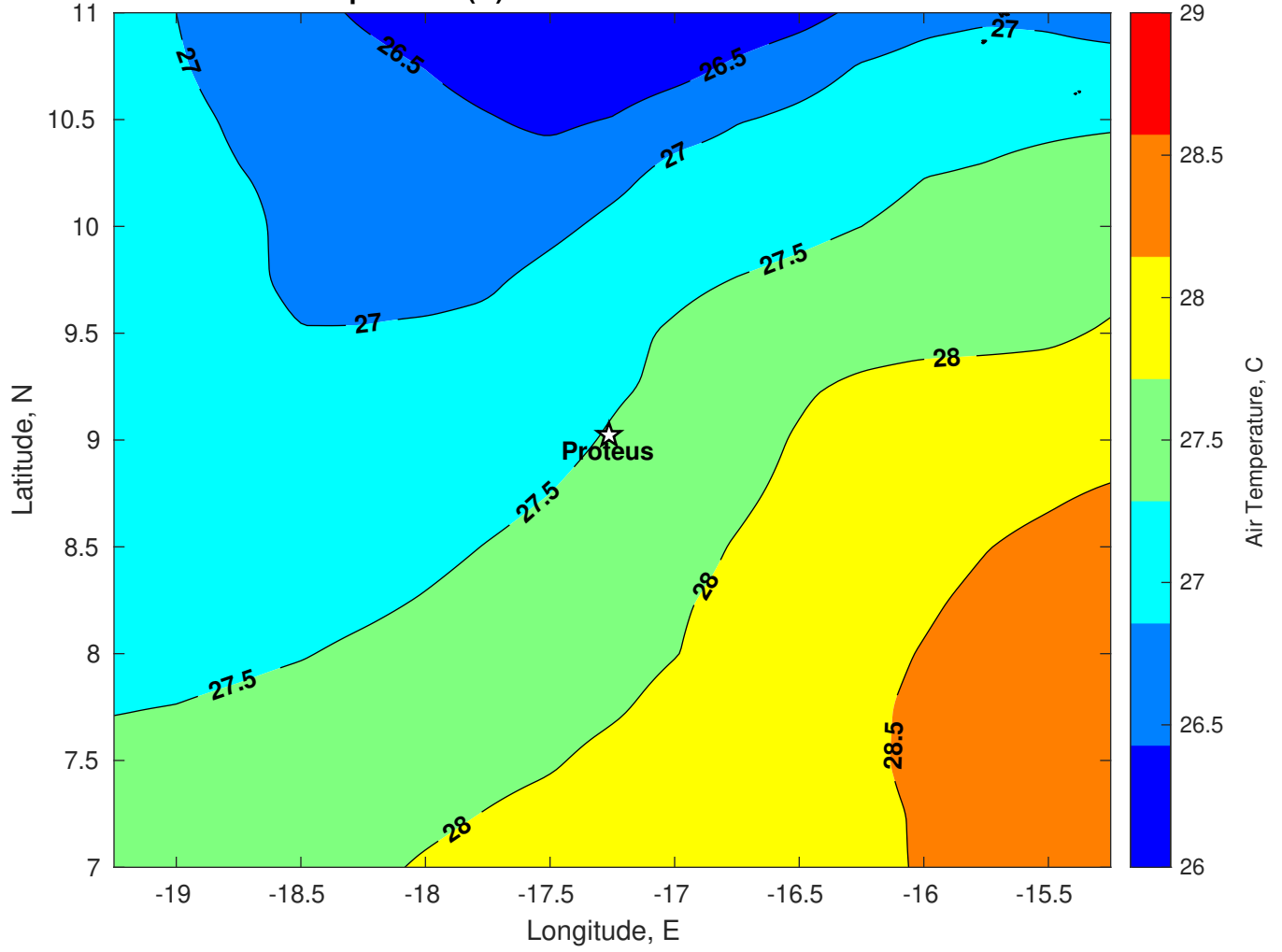
Surface Pressure (mb) for Proteus at 10-Jan-2025 00:00:00



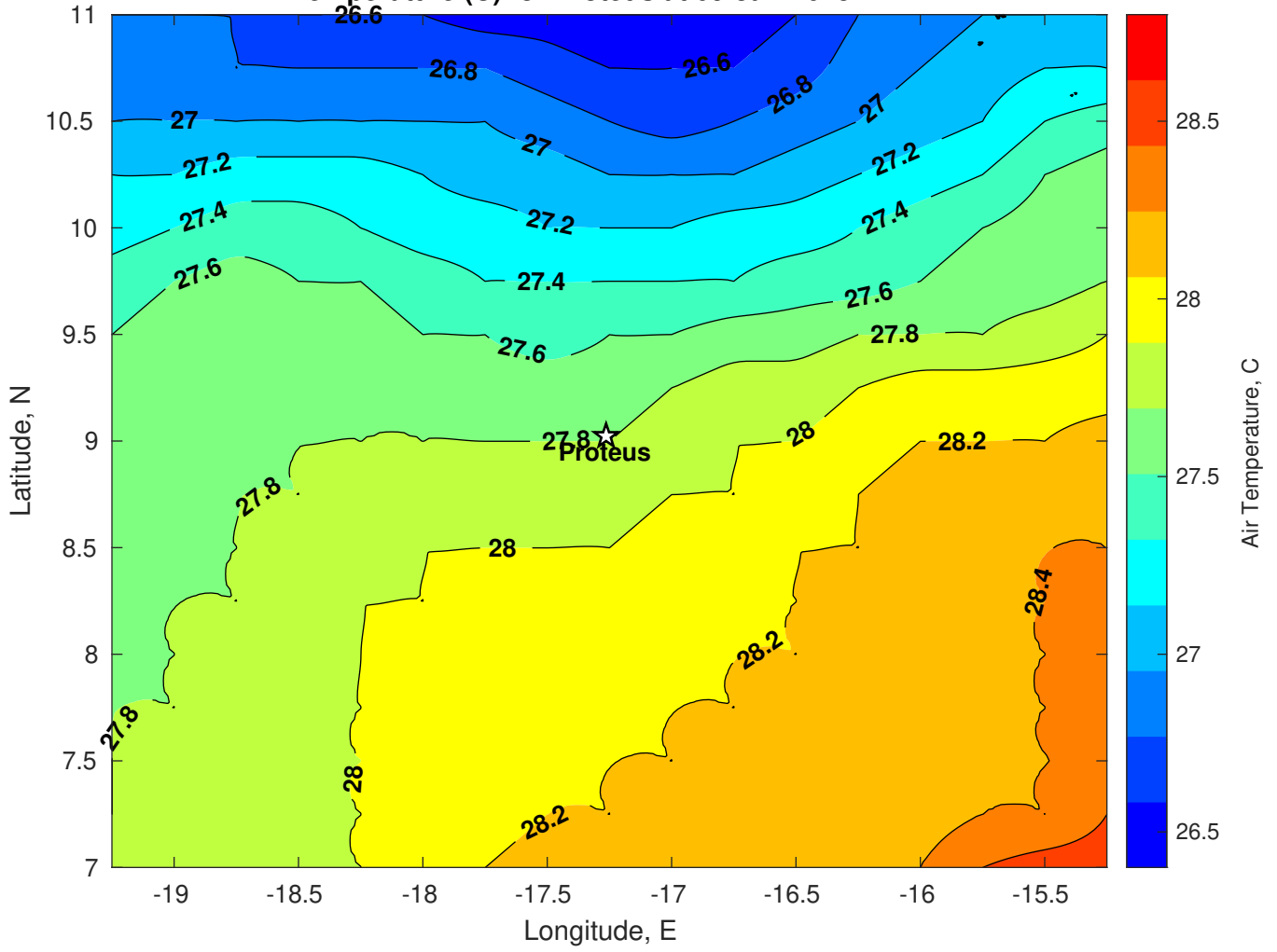
Surface Pressure (mb) for Proteus at 11-Jan-2025 00:00:00



Air Temperature (C) for Proteus at 09-Jan-2025



Air Temperature (C) for Proteus at 09-Jan-2025



Air Temperature (C) for Proteus at 09-Jan-2025

