
Marine Weather Forecast for Geohidra (Shell) Dragon
Forecast valid as of 13-Jan-2025 2100 GMT

All times are local.

Today

Winds: E, 10-15 kts.
Waves: N, 2-3 feet, 11-12 sec.
Currents: W, 1-1.5 kts.

Tonight

Winds: E, 10-15 kts.
Waves: N, 2-3 feet, 13-14 sec.
Currents: W, 1-1.5 kts.

Tuesday

Winds: E, 10-15 kts.
Waves: E, 2-3 feet, 13-14 sec.
Currents: W, 1-1.5 kts.

Tuesday Night

Winds: E, 10-15 kts.
Waves: E, 2-3 feet, 12-13 sec.
Currents: W, 1-1.5 kts.

Wednesday

Winds: E, 10-15 kts.
Waves: E, 2-3 feet, 7-8 sec.
Currents: W, 1-1.5 kts.

Wednesday Night

Winds: E, 10-15 kts.
Waves: NE, 2-3 feet, 12-13 sec.
Currents: W, 1-1.5 kts.

Thursday

Winds: E, 5-10 kts.
Waves: N, 2-3 feet, 15-16 sec.
Currents: W, 1-1.5 kts.

Thursday Night

Winds: E, 10-15 kts.
Waves: N, 2-3 feet, 14-15 sec.
Currents: W, 0.5-1 kts.

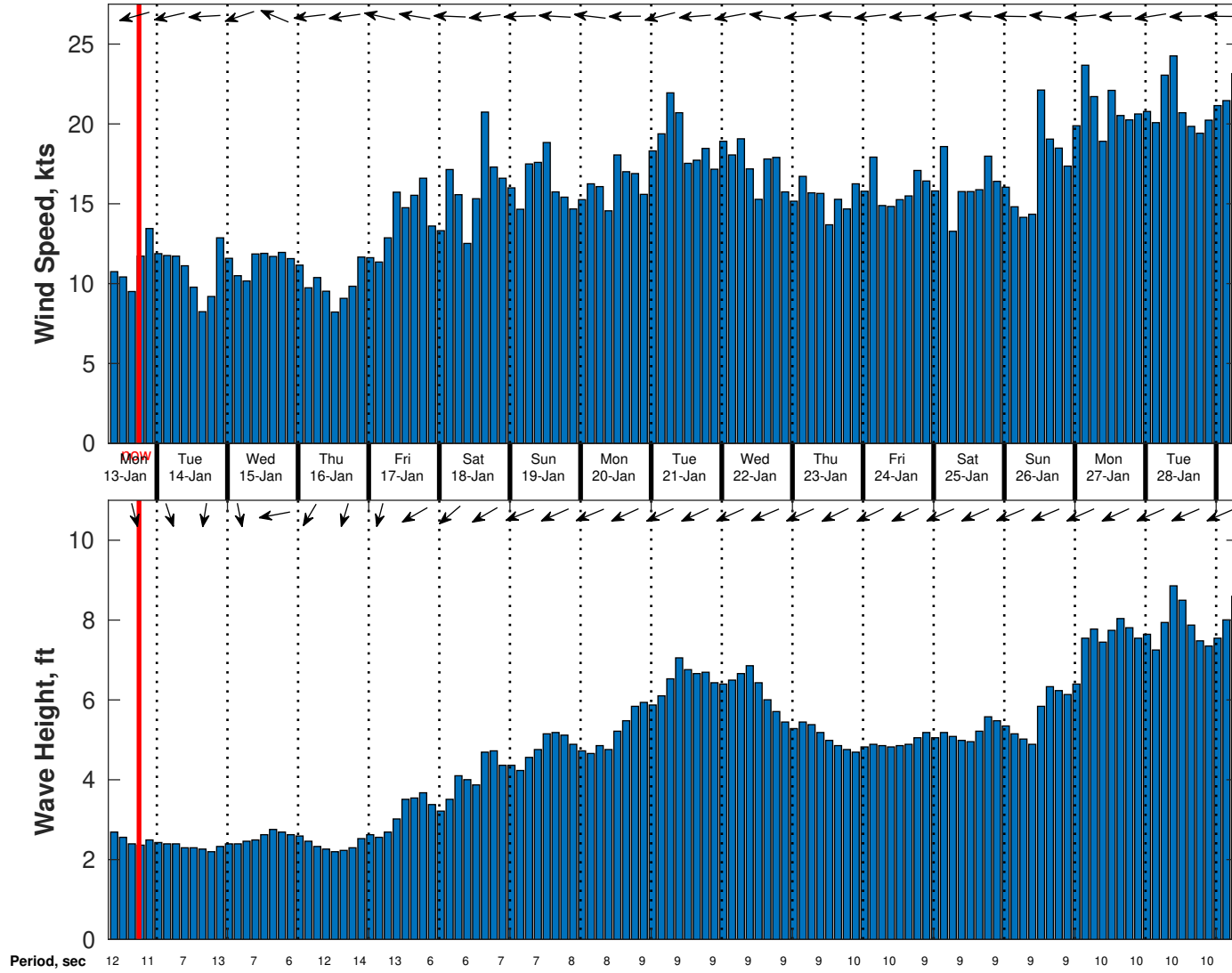
Friday

Winds: E, 15-20 kts.
Waves: NE, 3-4 feet, 13-14 sec.
Currents: W, 1-1.5 kts.

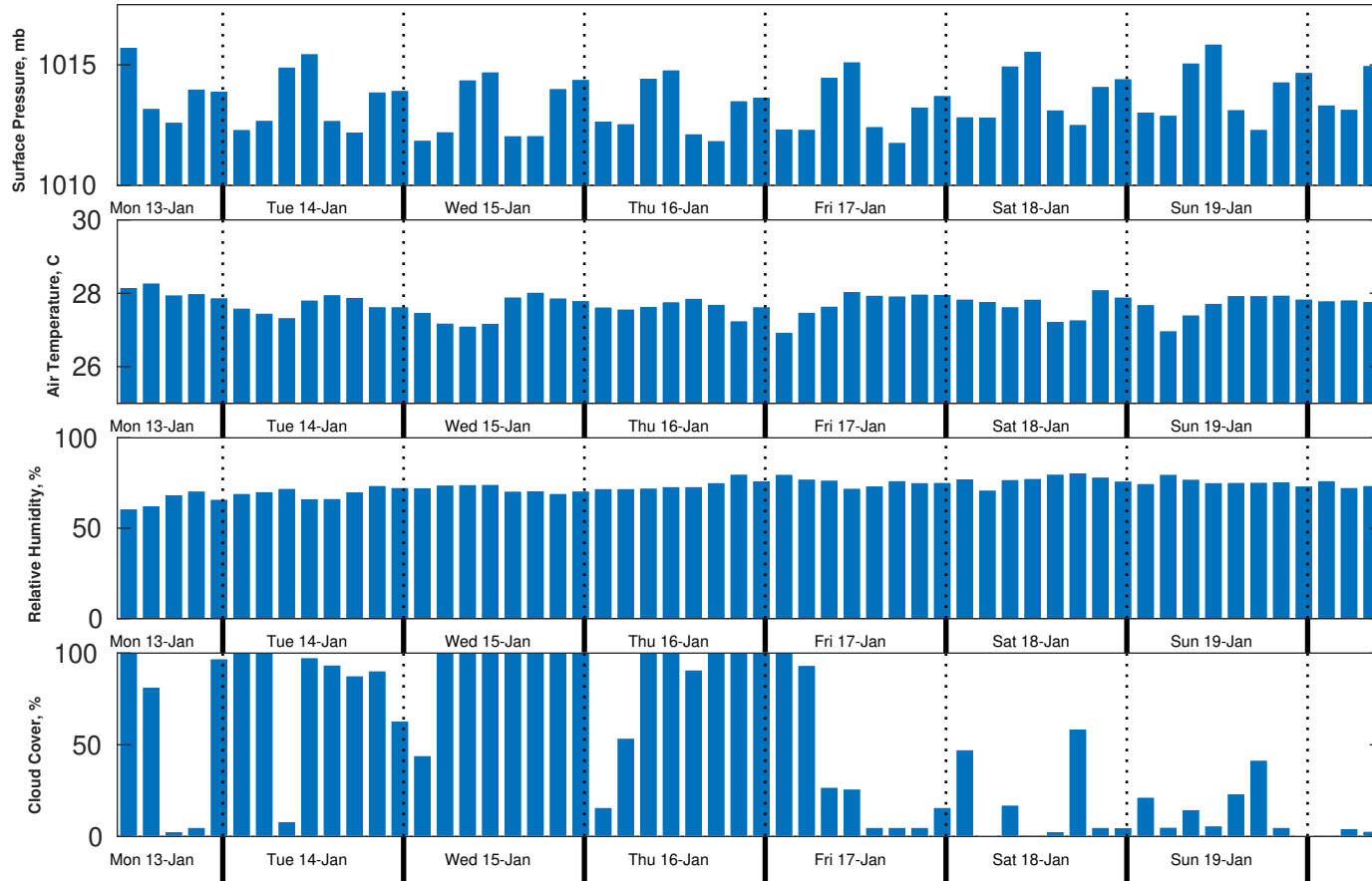
Friday Night

Winds: E, 15-20 kts.
Waves: NE, 4-5 feet, 6-7 sec.
Currents: W, 1-1.5 kts.

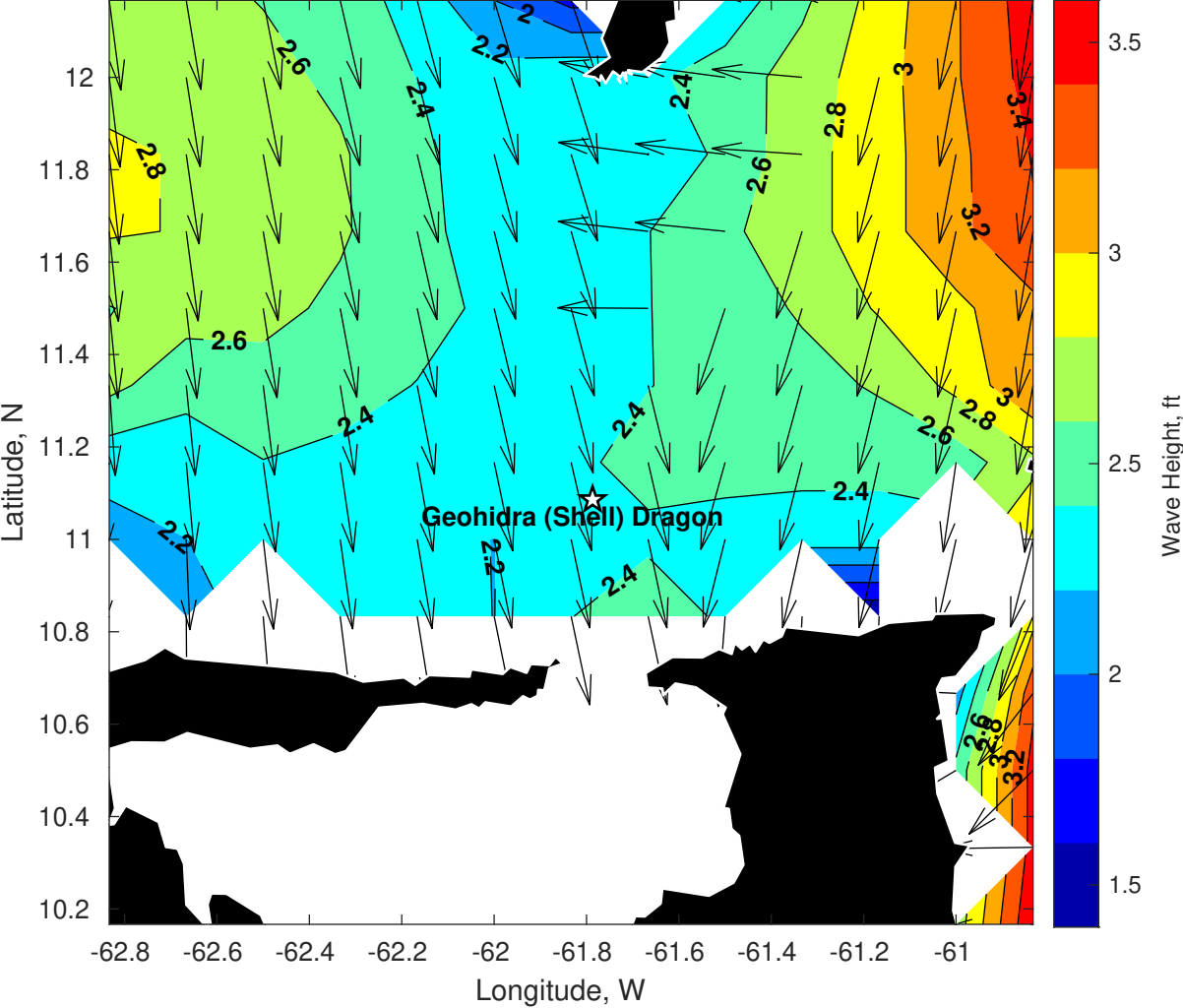
Wind & Wave Forecast for Geohidra (Shell) Dragon from 13-Jan-2025 08:00:00 to 29-Jan-2025 08:00:00



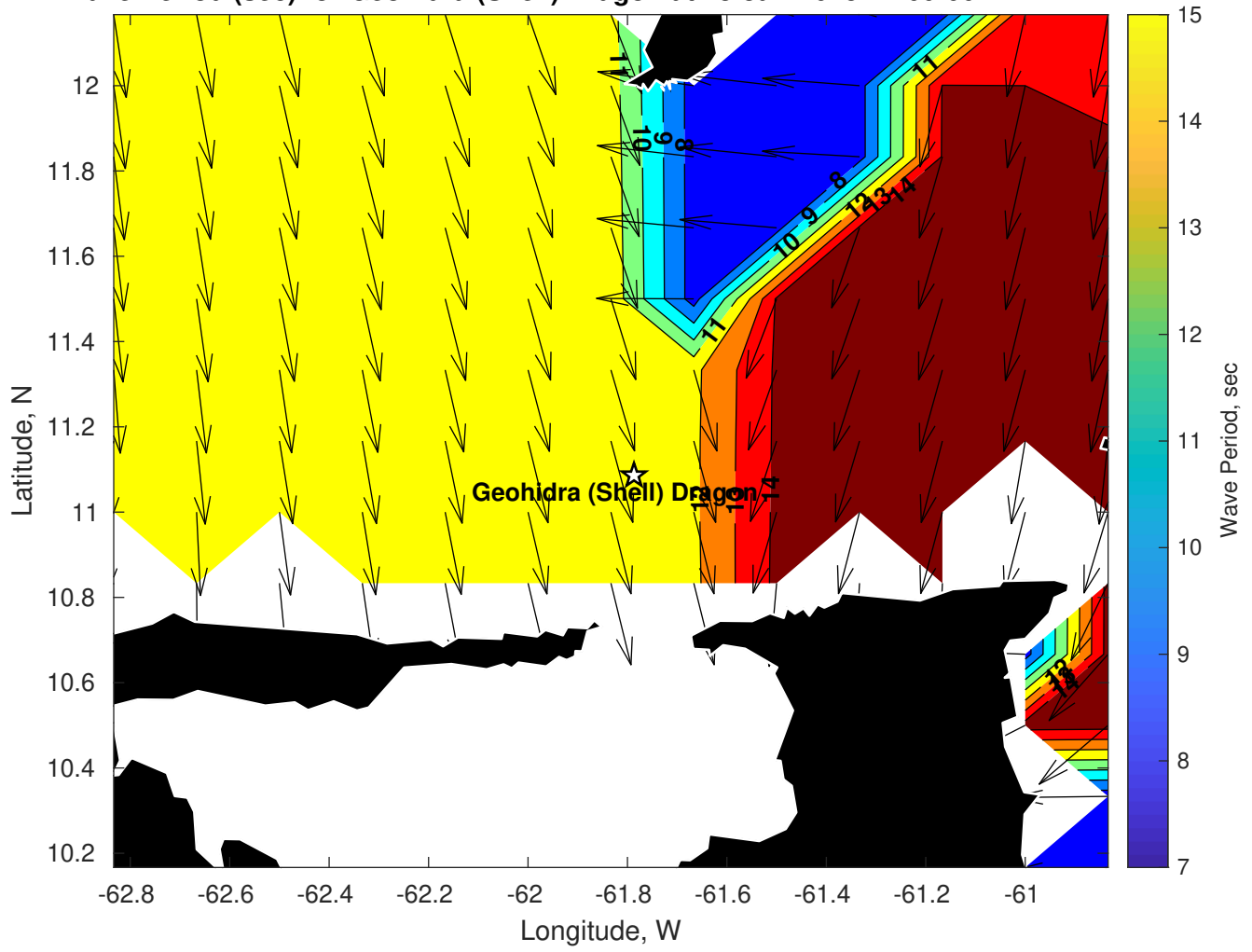
Met Forecast for Geohidra (Shell) Dragon from 13-Jan-2025 12:00:00 to 20-Jan-2025 12:00:00



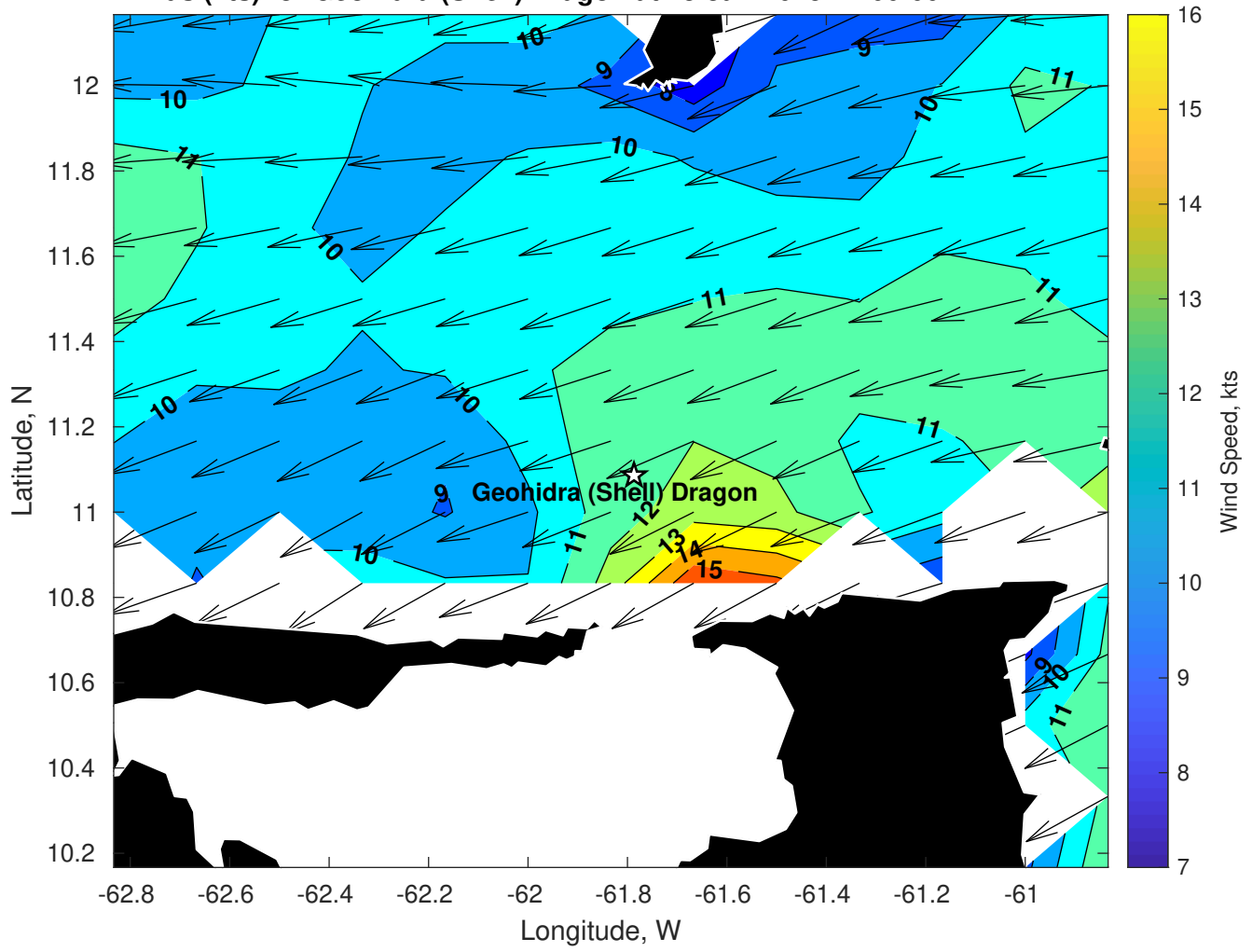
Wave Height (ft) for Geohidra (Shell) Dragon at 13-Jan-2025 21:00:00



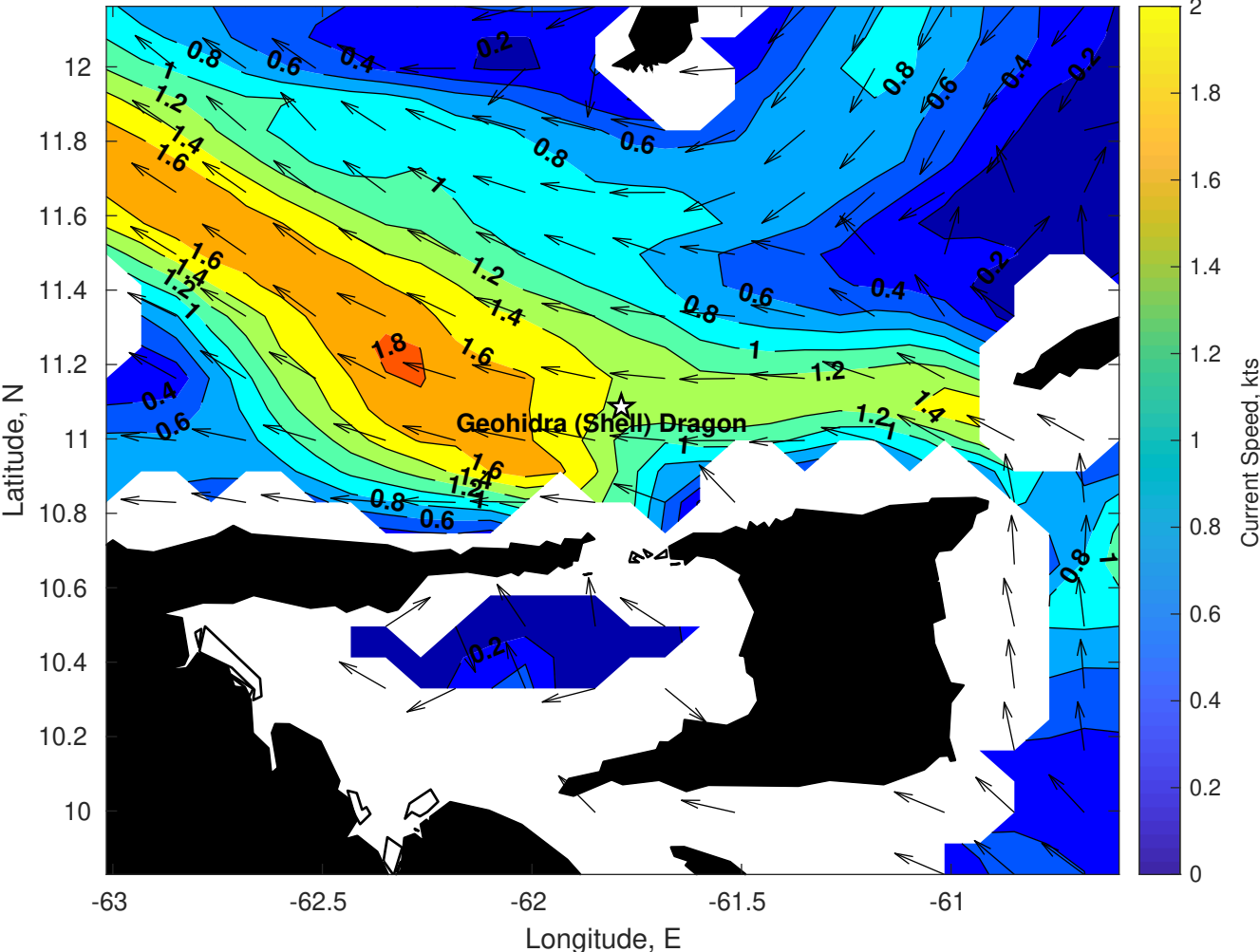
Wave Period (sec) for Geohidra (Shell) Dragon at 13-Jan-2025 21:00:00



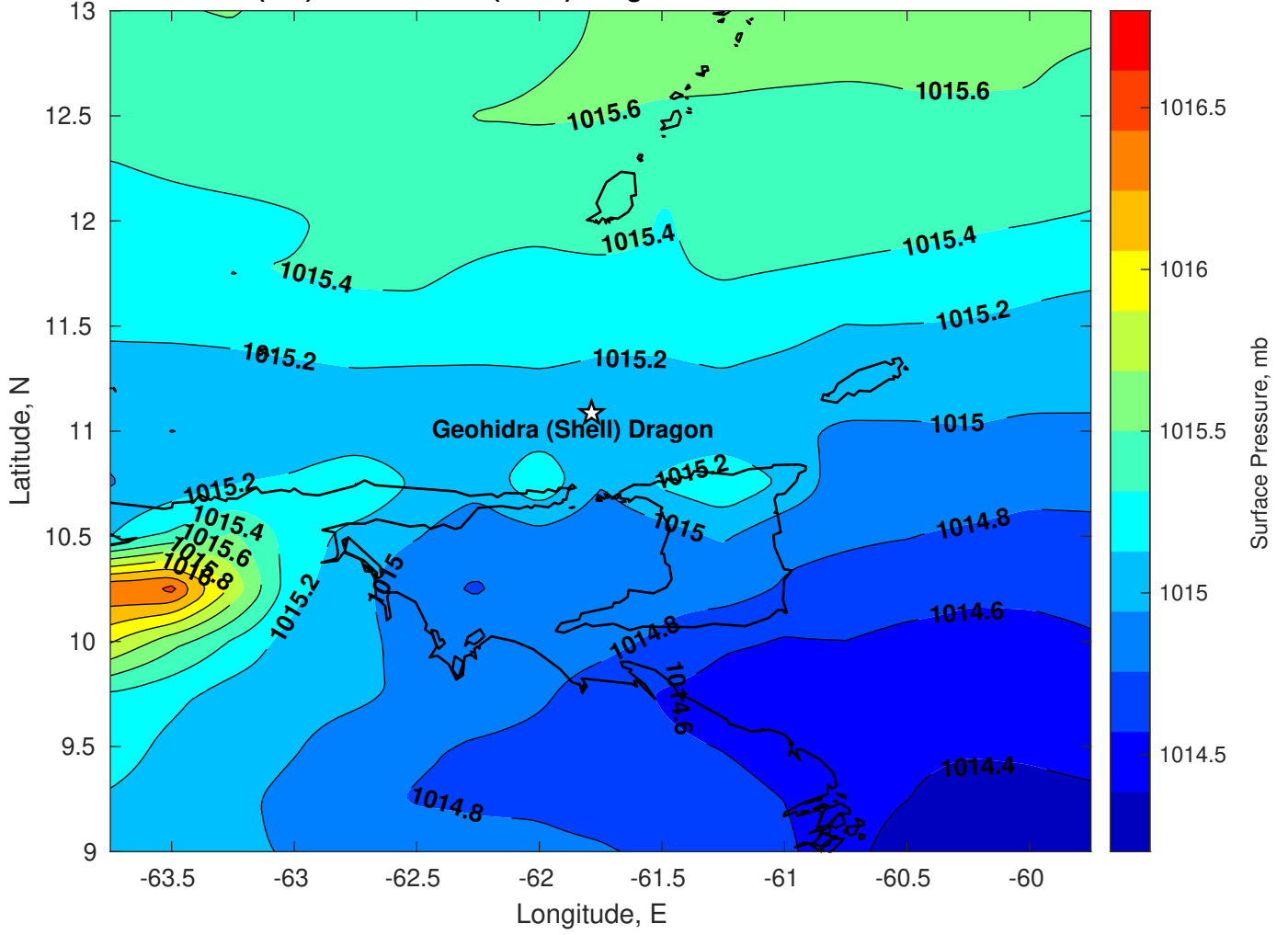
Winds (kts) for Geohidra (Shell) Dragon at 13-Jan-2025 21:00:00



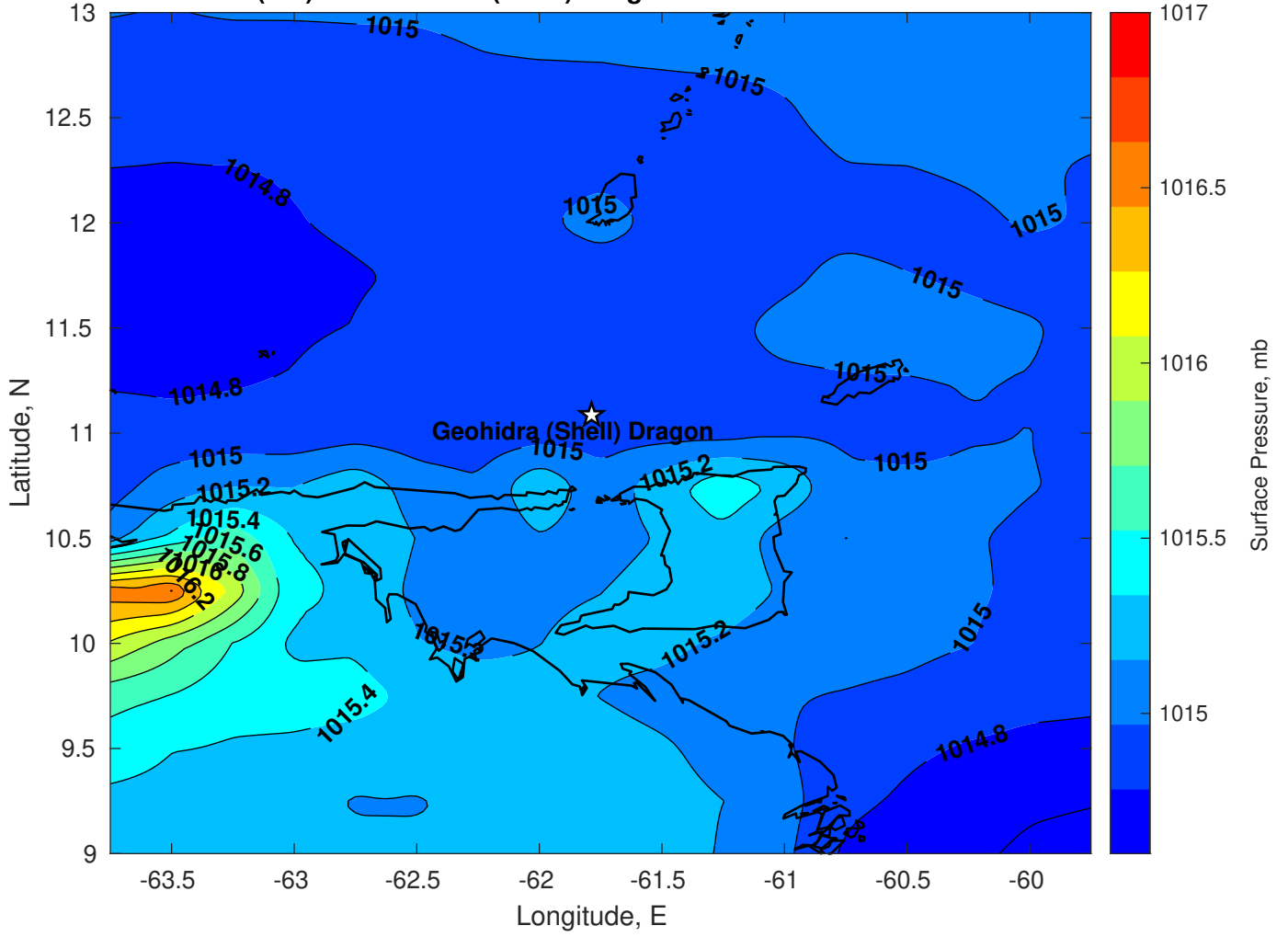
Surface Currents for Geohidra (Shell) Dragon at 13-Jan-2025 00:00:00



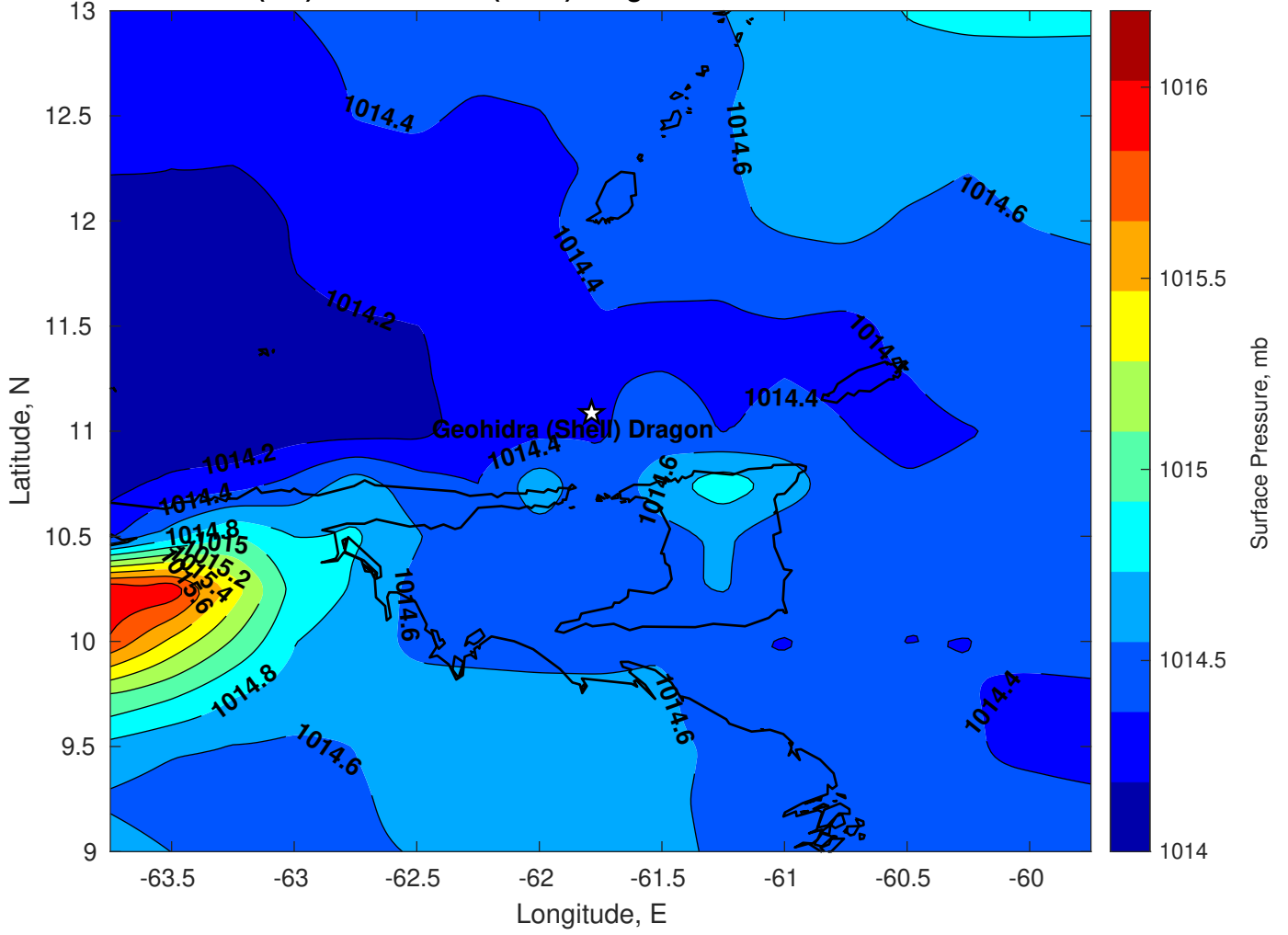
Surface Pressure (mb) for Geohidra (Shell) Dragon at 13-Jan-2025 12:00:00



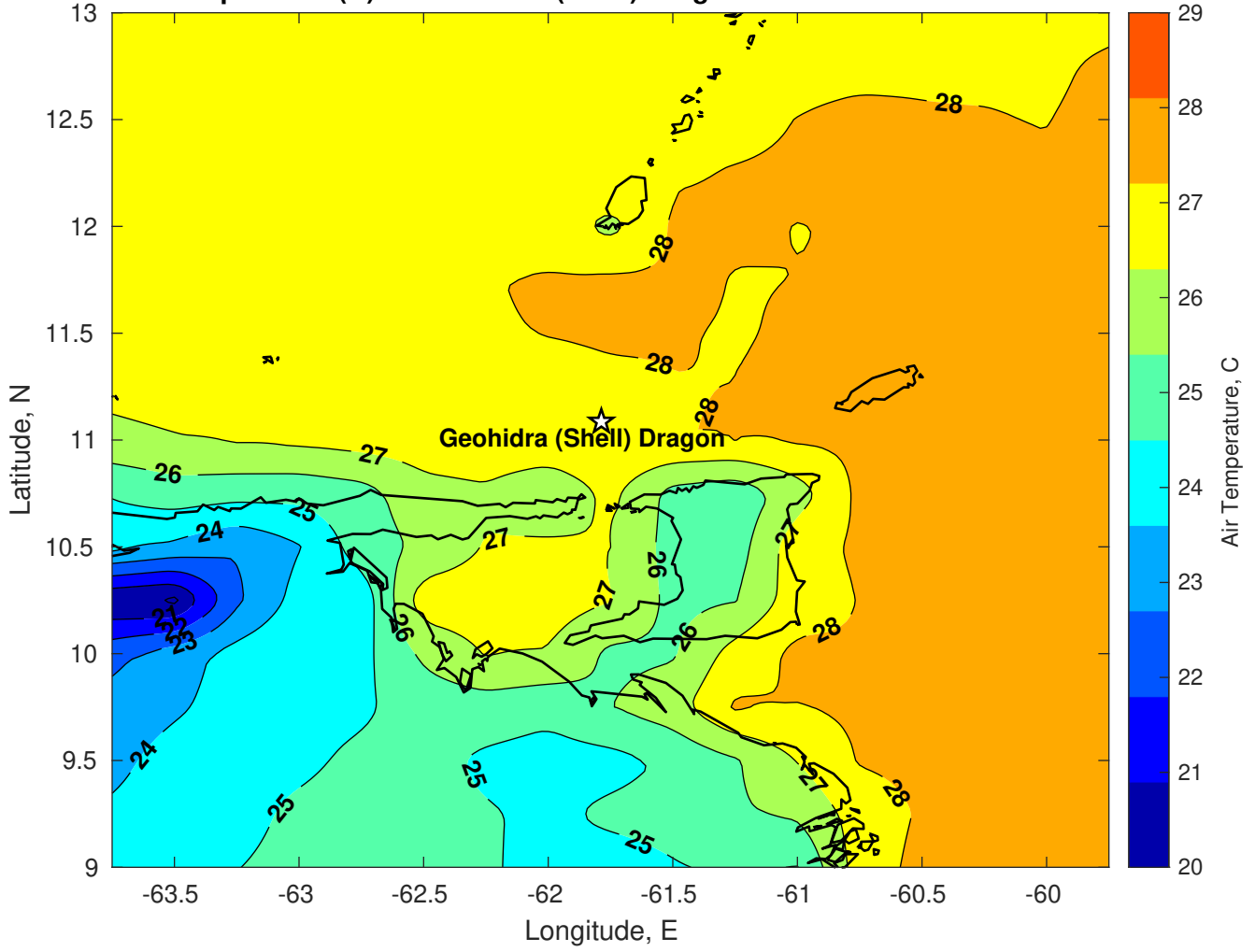
Surface Pressure (mb) for Geohidra (Shell) Dragon at 14-Jan-2025 12:00:00



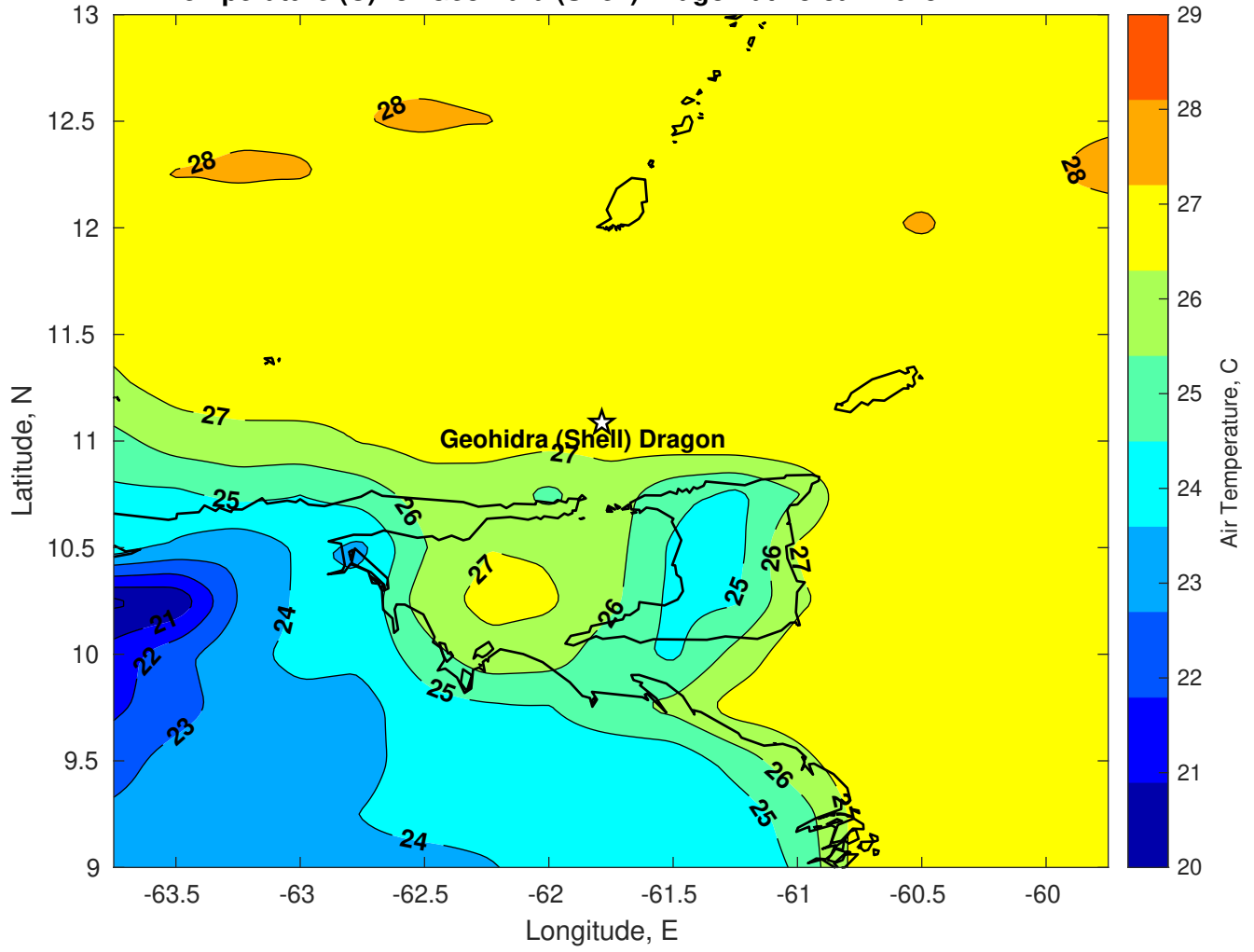
Surface Pressure (mb) for Geohidra (Shell) Dragon at 15-Jan-2025 12:00:00



Air Temperature (C) for Geohidra (Shell) Dragon at 13-Jan-2025



Air Temperature (C) for Geohidra (Shell) Dragon at 13-Jan-2025



Air Temperature (C) for Geohidra (Shell) Dragon at 13-Jan-2025

