

\*\*\*\*\*  
Marine Weather Forecast for Proteus  
Forecast valid as of 15-Jan-2025 0900 GMT  
\*\*\*\*\*

All times are local.

Today

Winds: NW, 10-15 kts.  
Waves: N, 2-3 feet, 14-15 sec.  
No currents available.

Tonight

Winds: NW, 10-15 kts.  
Waves: N, 2-3 feet, 13-14 sec.  
No currents available.

Thursday

Winds: NW, 10-15 kts.  
Waves: N, 2-3 feet, 12-13 sec.  
No currents available.

Thursday Night

Winds: NW, 10-15 kts.  
Waves: N, 2-3 feet, 11-12 sec.  
No currents available.

Friday

Winds: N, 10-15 kts.  
Waves: N, 2-3 feet, 16-17 sec.  
No currents available.

Friday Night

Winds: NW, 10-15 kts.  
Waves: N, 3-4 feet, 16-17 sec.  
No currents available.

Saturday

Winds: NW, 10-15 kts.  
Waves: N, 3-4 feet, 15-16 sec.  
No currents available.

Saturday Night

Winds: NW, 15-20 kts.  
Waves: N, 3-4 feet, 14-15 sec.  
No currents available.

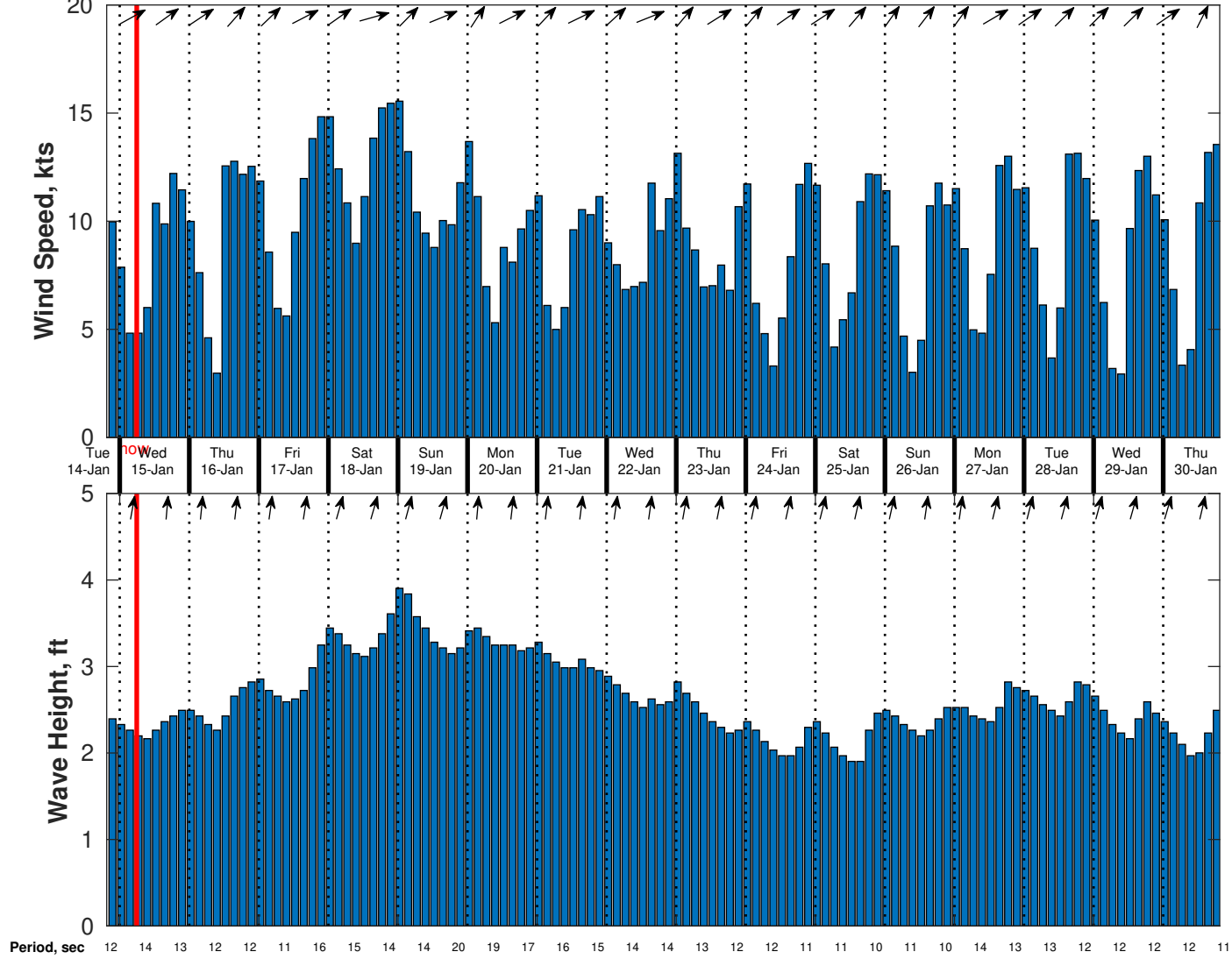
Sunday

Winds: NW, 10-15 kts.  
Waves: N, 3-4 feet, 13-14 sec.  
No currents available.

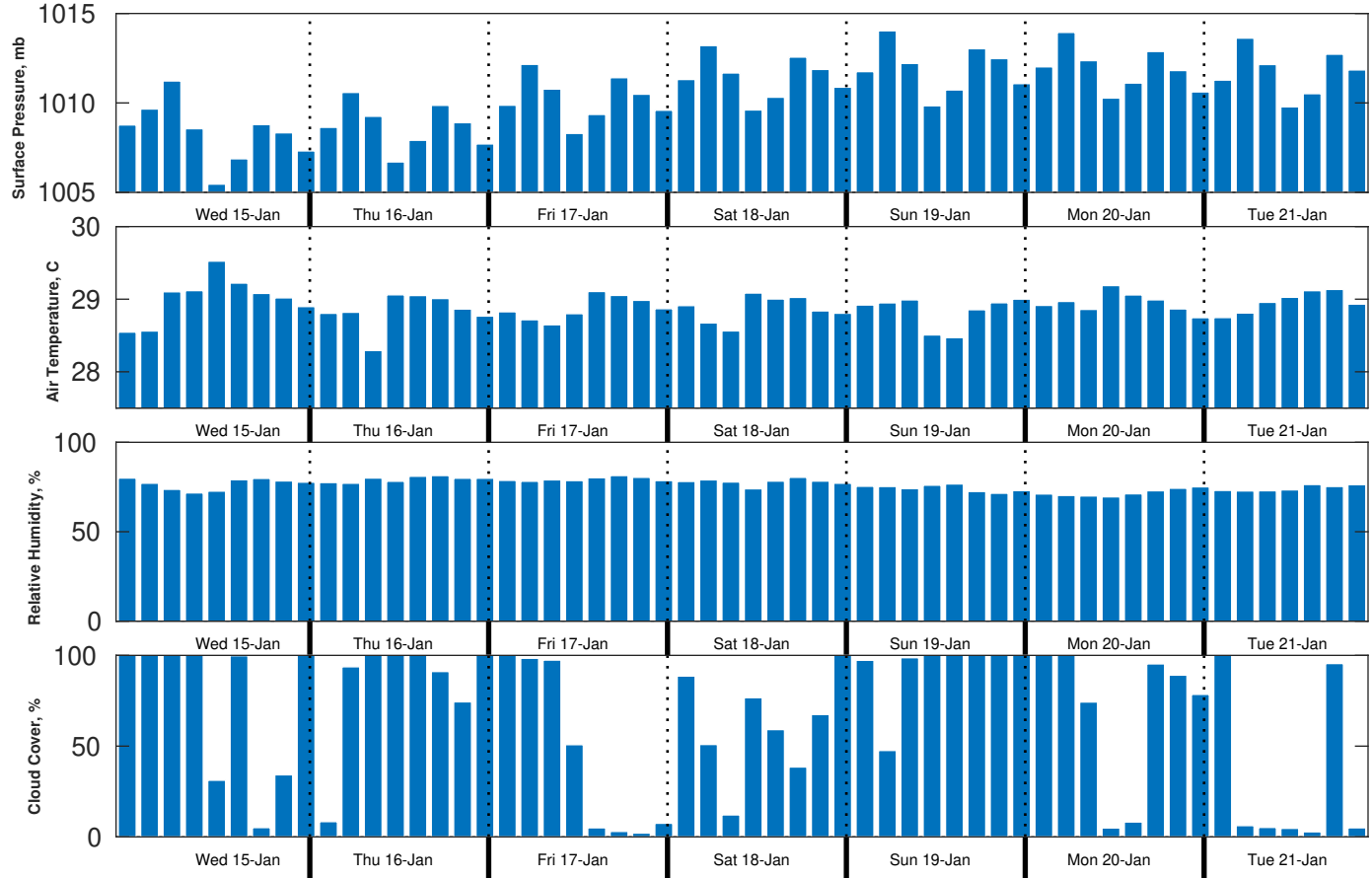
Sunday Night

Winds: NW, 10-15 kts.  
Waves: N, 3-4 feet, 20-21 sec.  
No currents available.

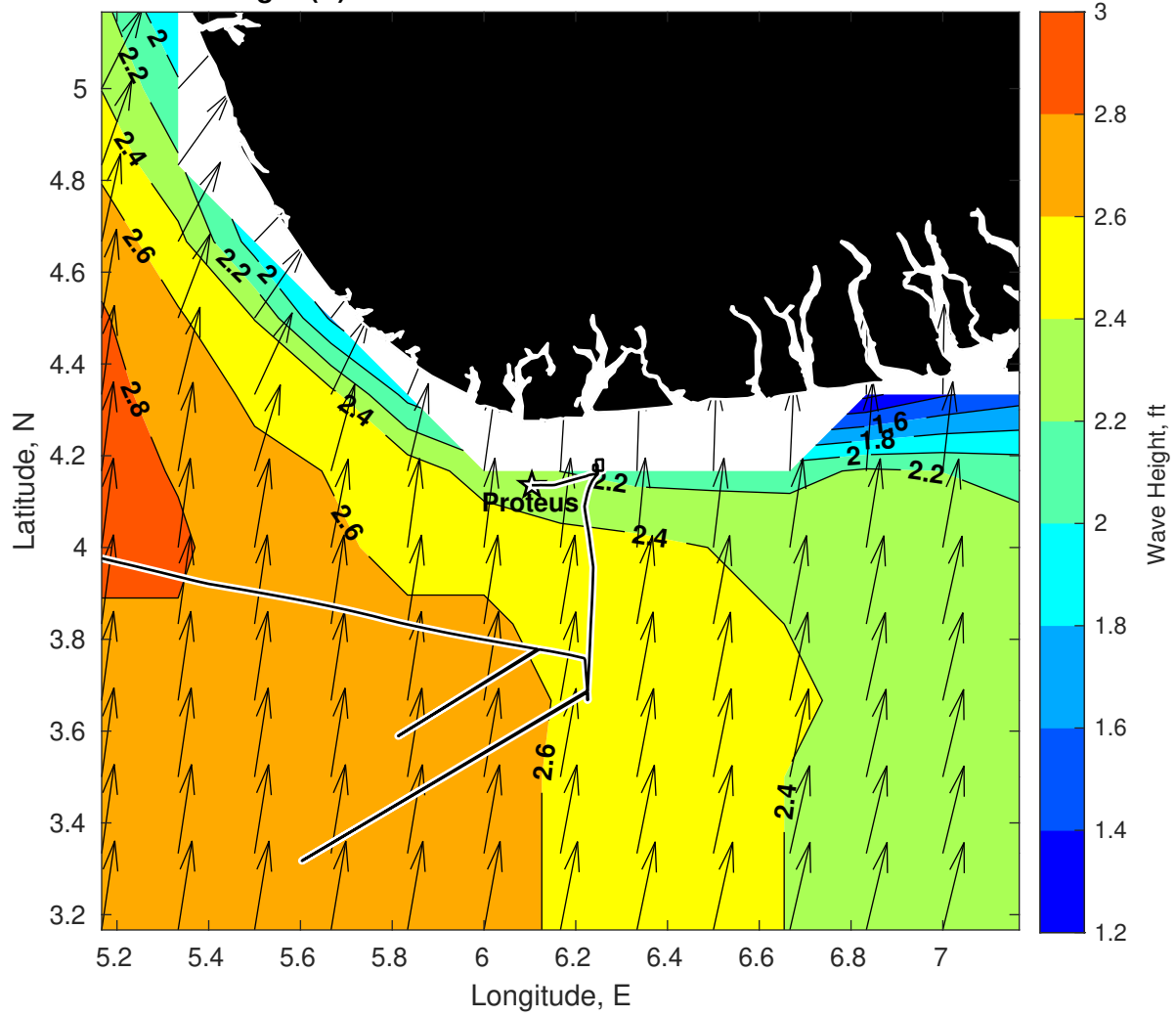
Wind & Wave Forecast for Proteus from 14-Jan-2025 20:00:00 to 30-Jan-2025 20:00:00



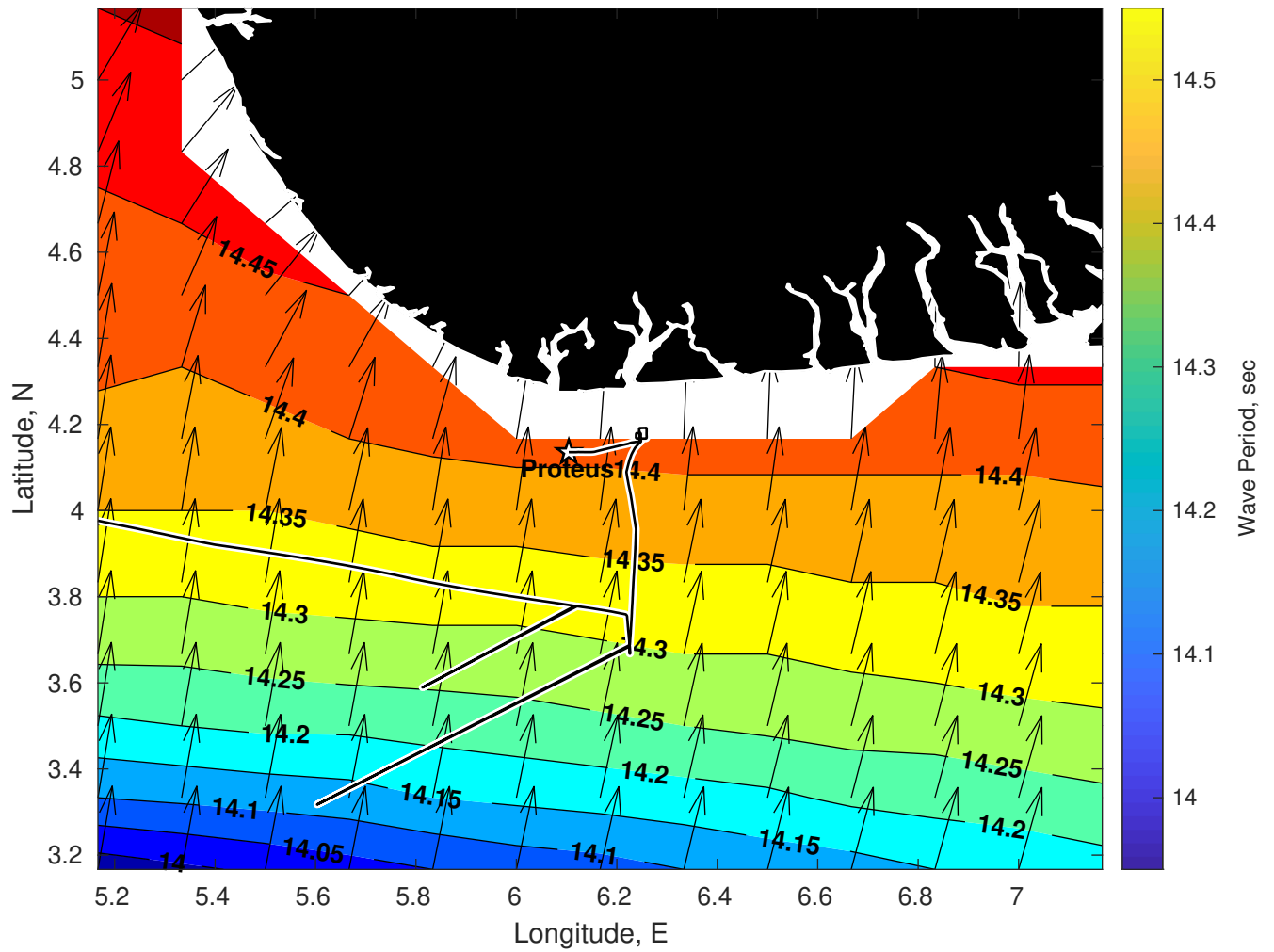
### Met Forecast for Proteus from 15-Jan-2025 00:00:00 to 22-Jan-2025 00:00:00



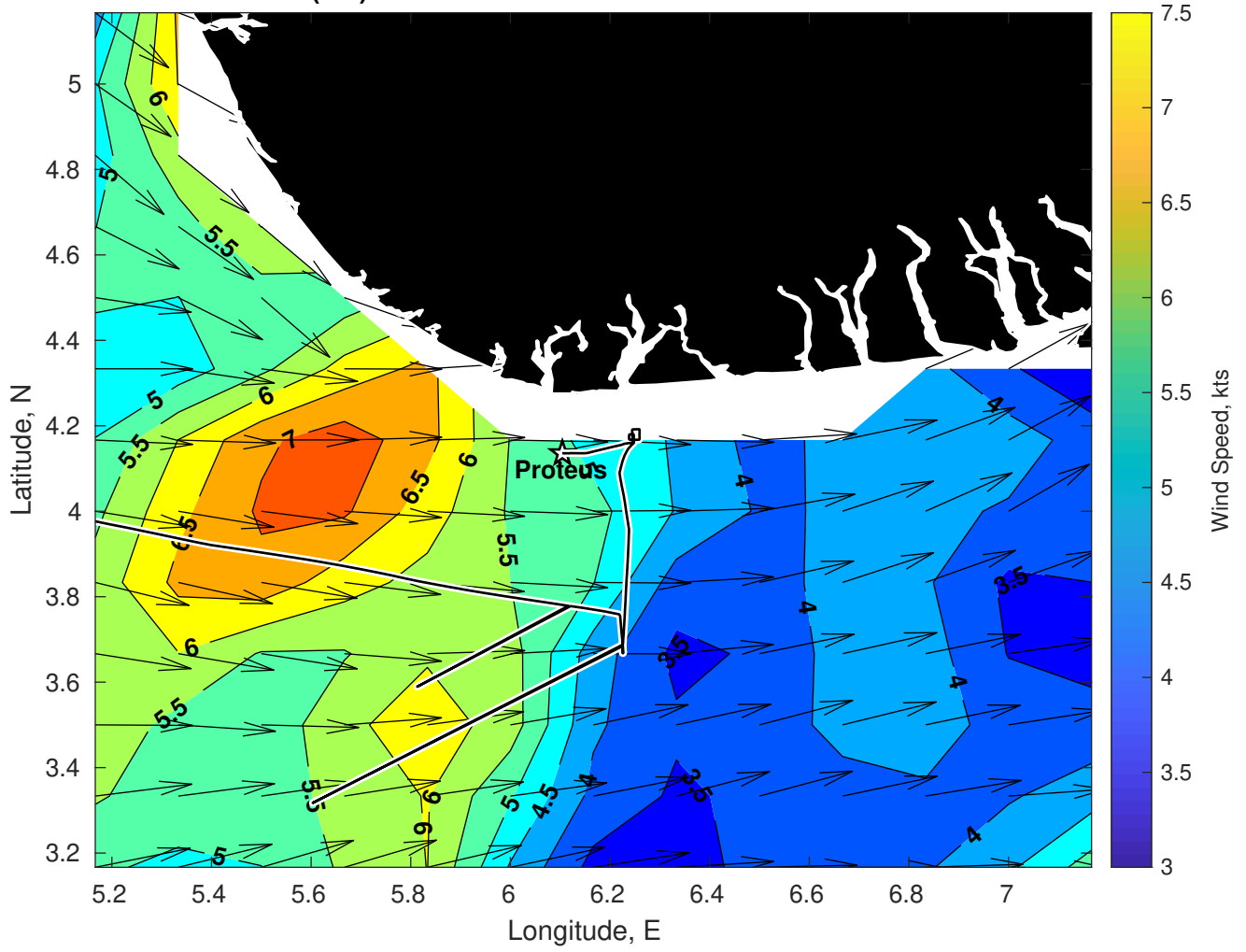
Wave Height (ft) for Proteus at 15-Jan-2025 09:00:00



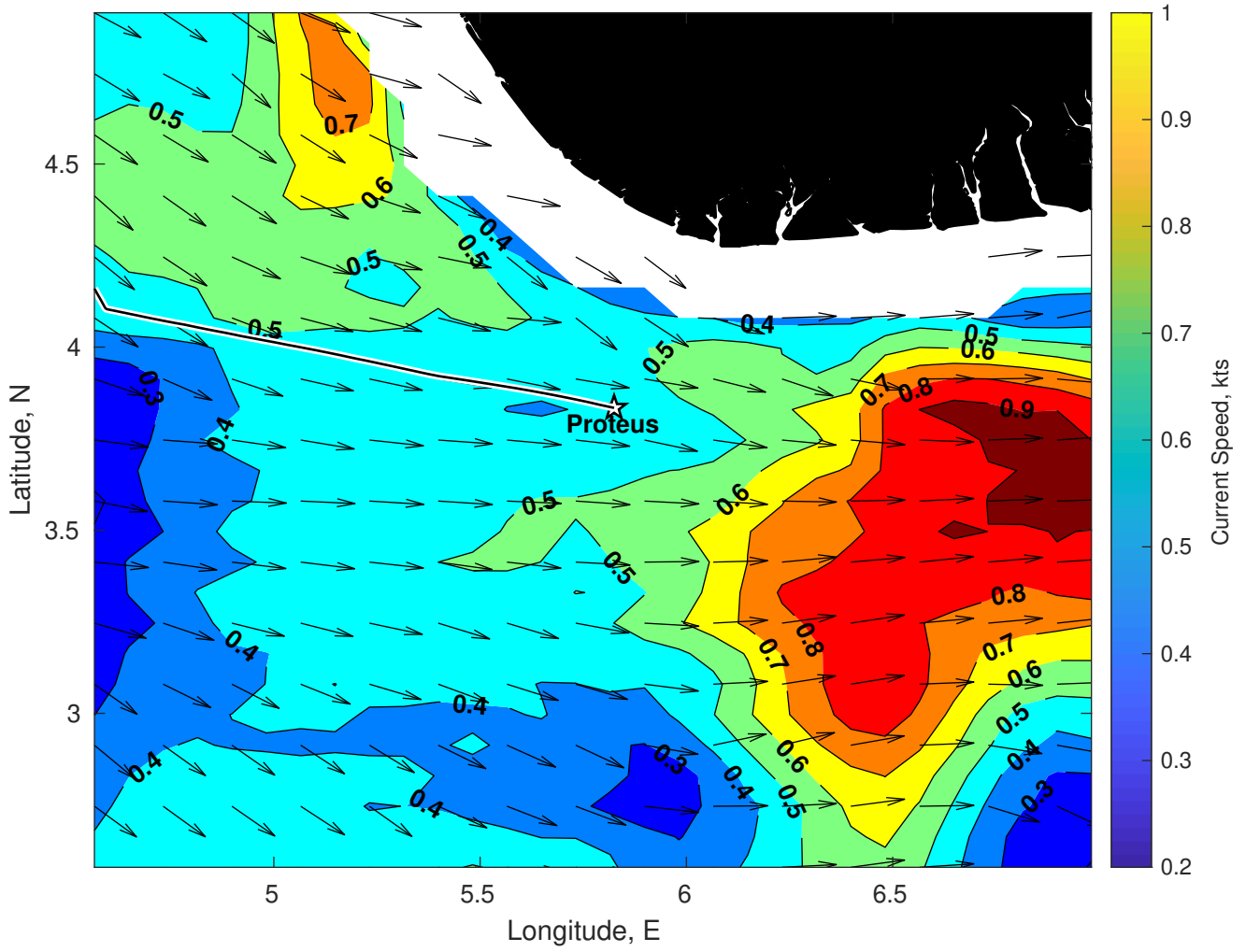
Wave Period (sec) for Proteus at 15-Jan-2025 09:00:00



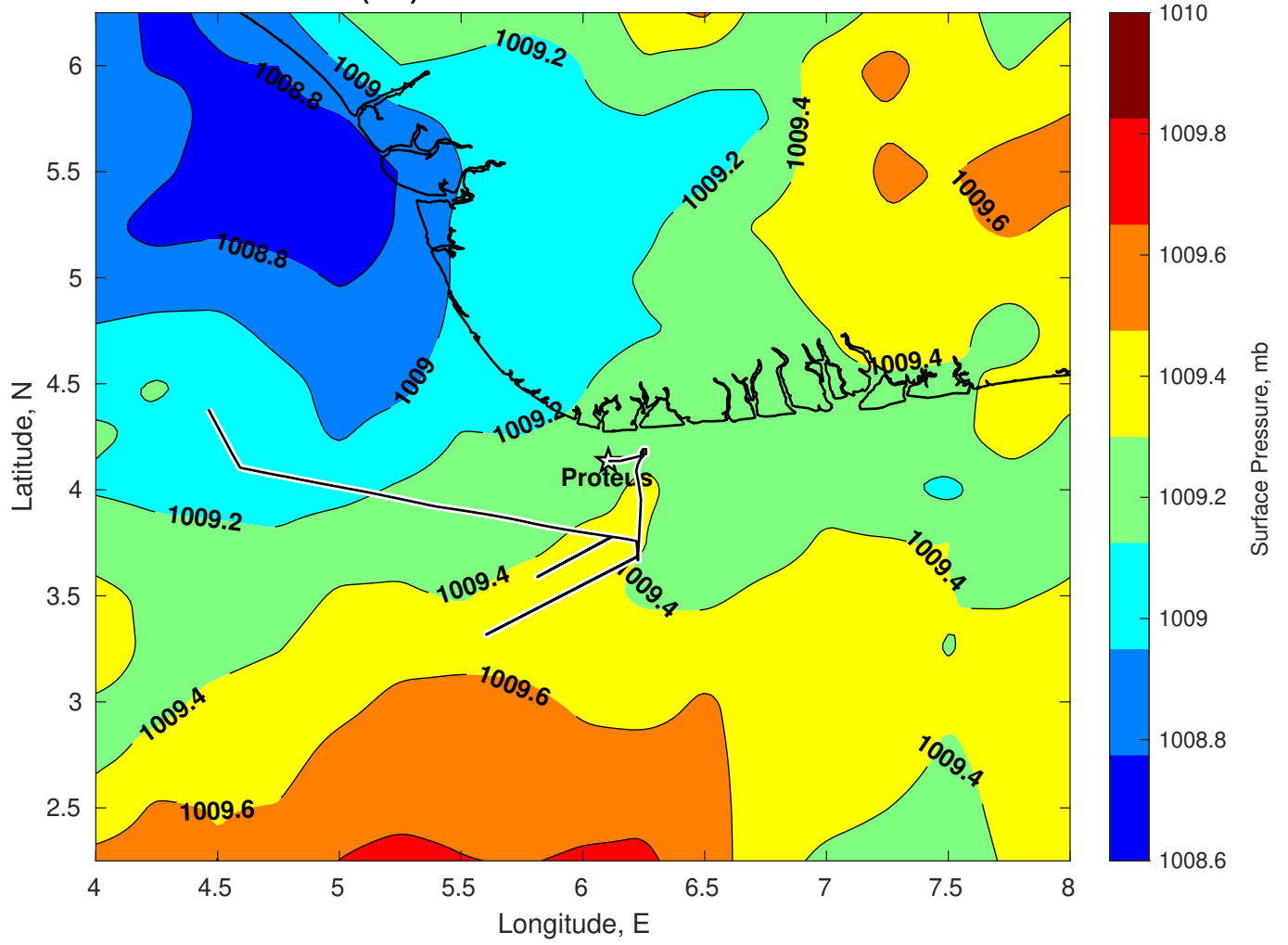
Winds (kts) for Proteus at 15-Jan-2025 09:00:00



Surface Currents for Proteus at 14-Jan-2025 00:00:00

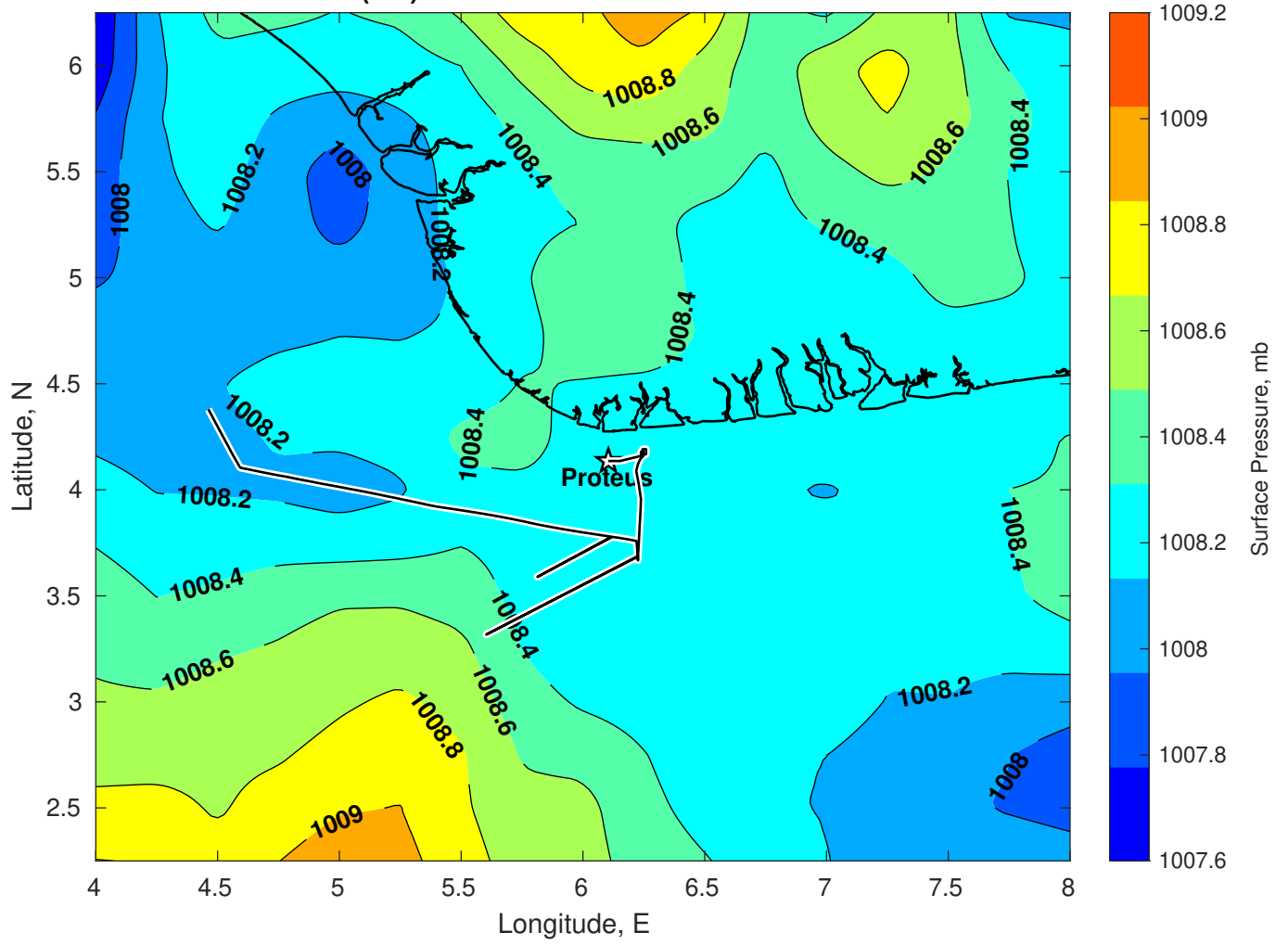


Surface Pressure (mb) for Proteus at 15-Jan-2025 00:00:00

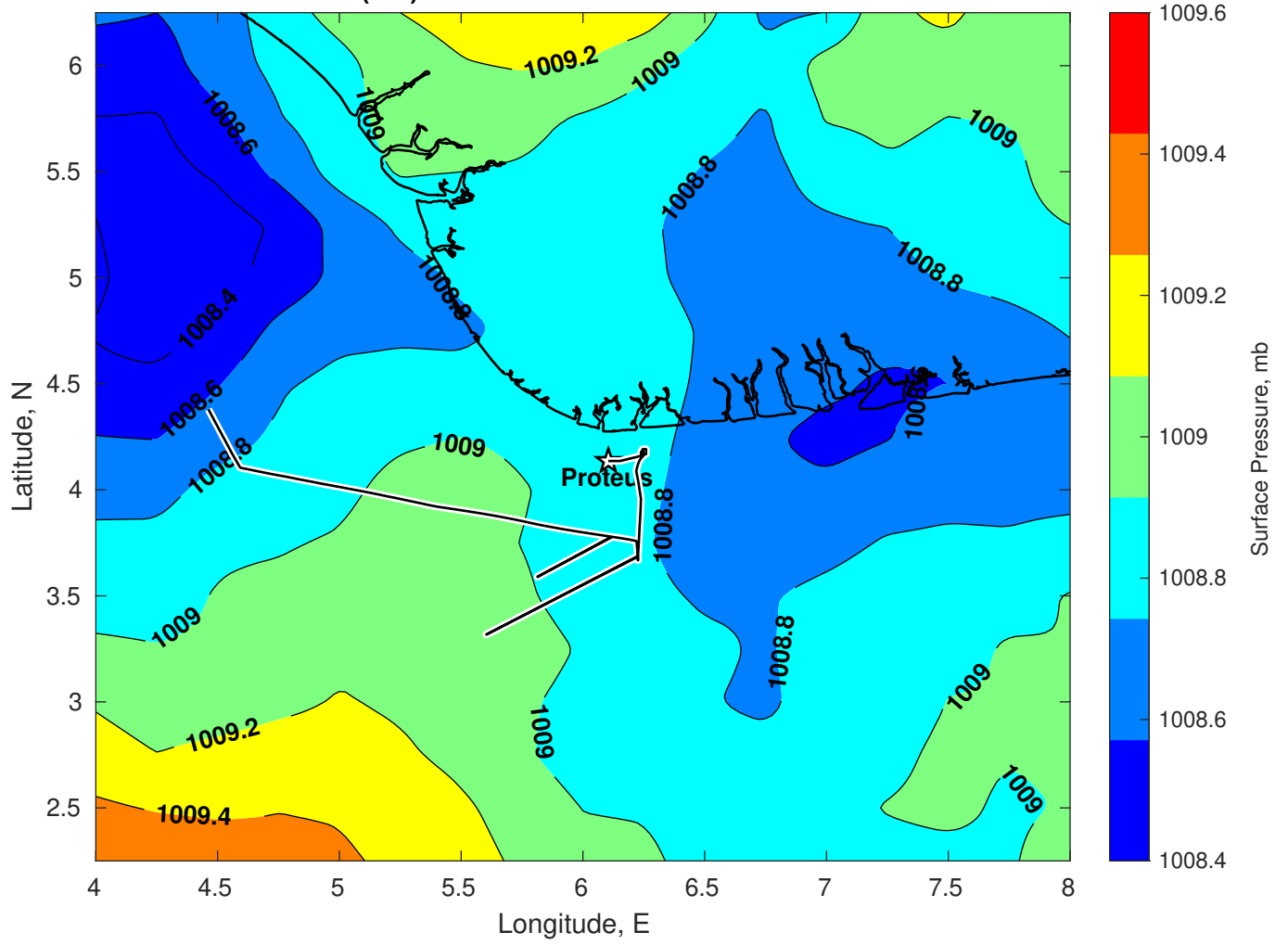




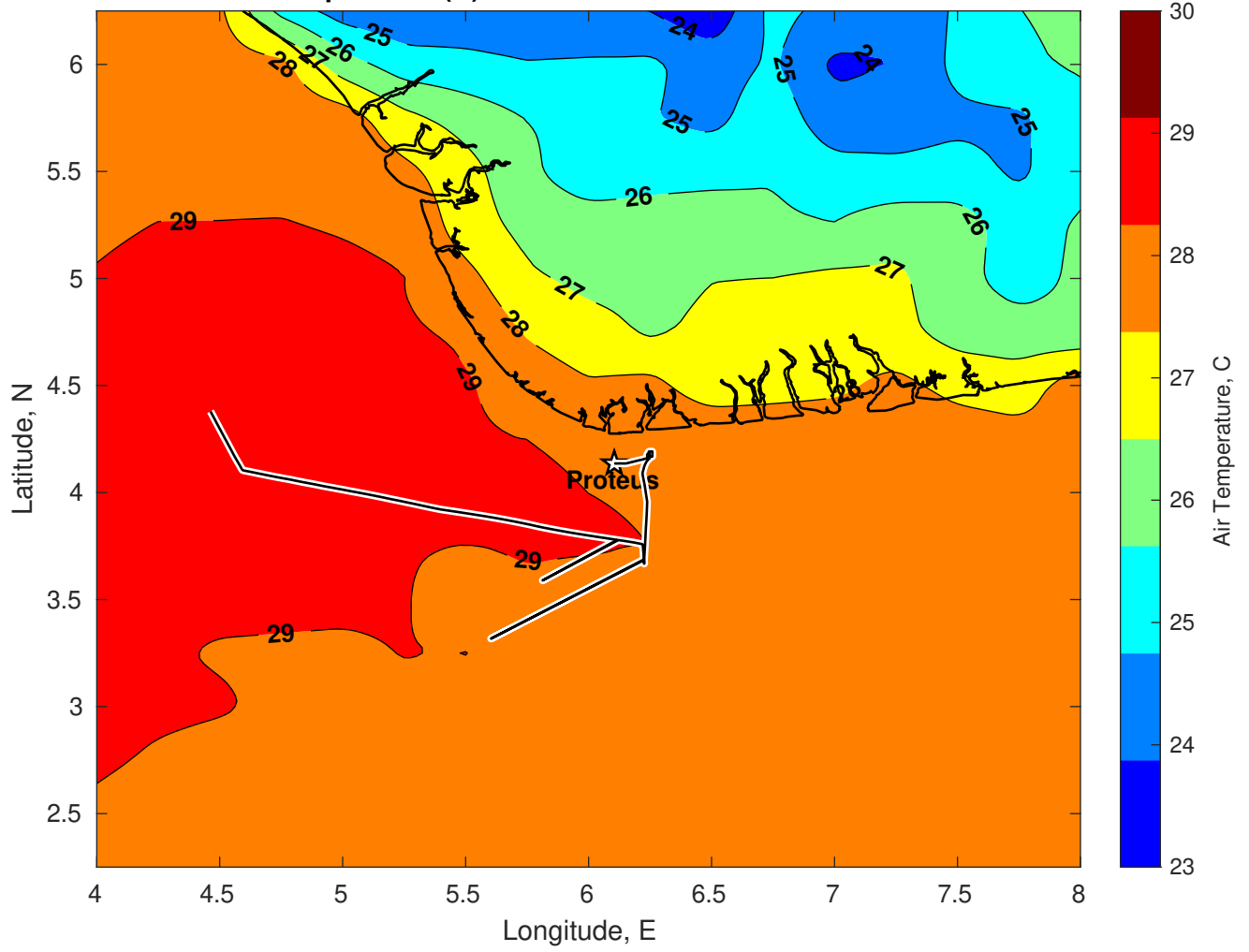
Surface Pressure (mb) for Proteus at 16-Jan-2025 00:00:00



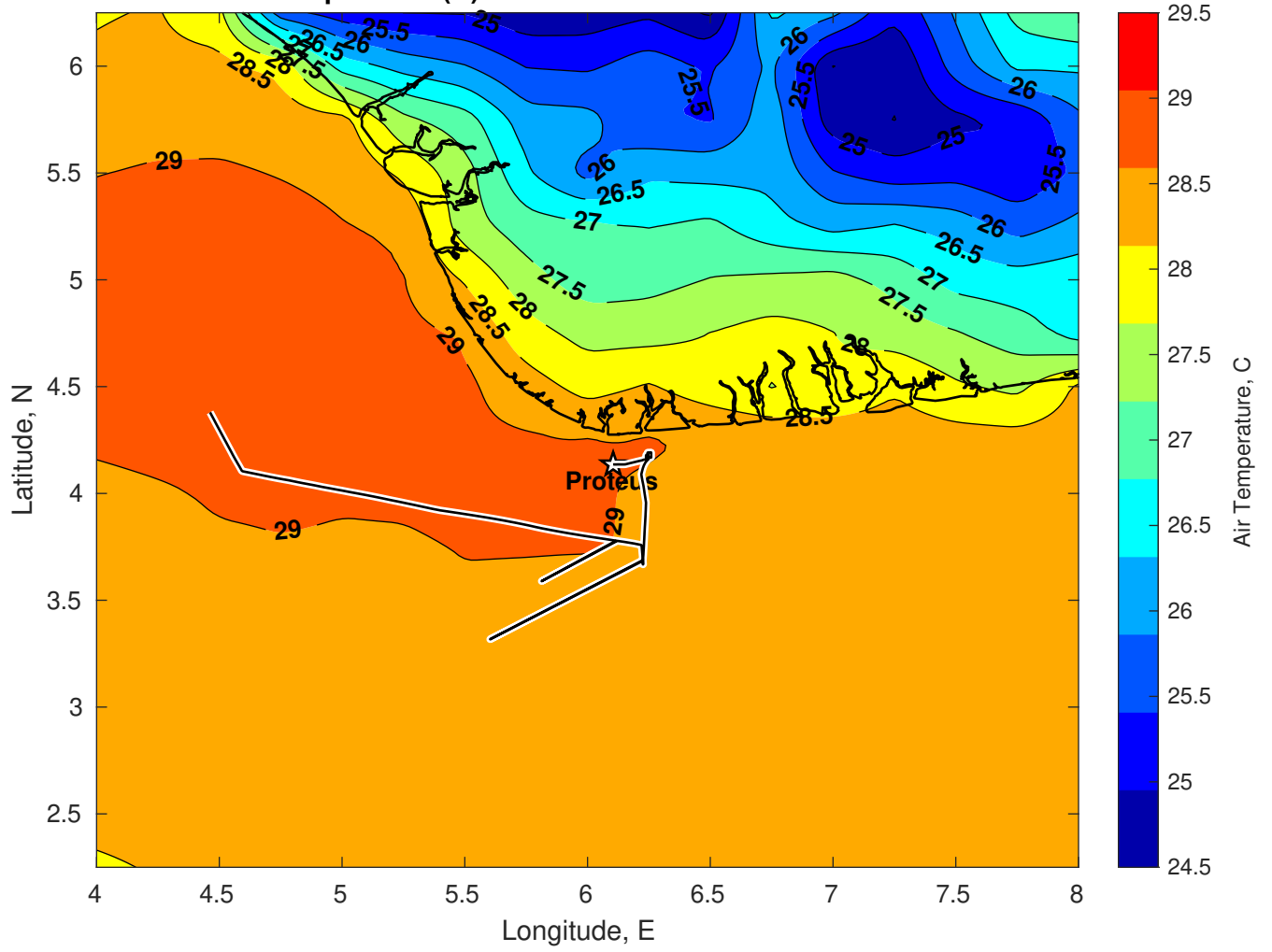
Surface Pressure (mb) for Proteus at 17-Jan-2025 00:00:00



Air Temperature (C) for Proteus at 15-Jan-2025



Air Temperature (C) for Proteus at 15-Jan-2025



Air Temperature (C) for Proteus at 15-Jan-2025

