
Marine Weather Forecast for CSL Shell Nigeria
Forecast valid as of 20-Jan-2025 0900 GMT

All times are local.

Today

Winds: NW, 10-15 kts.
Waves: N, 3-4 feet, 18-19 sec.
No currents available.

Tonight

Winds: NW, 10-15 kts.
Waves: N, 3-4 feet, 17-18 sec.
No currents available.

Tuesday

Winds: NW, 10-15 kts.
Waves: N, 3-4 feet, 16-17 sec.
No currents available.

Tuesday Night

Winds: NW, 10-15 kts.
Waves: N, 3-4 feet, 15-16 sec.
No currents available.

Wednesday

Winds: NW, 10-15 kts.
Waves: N, 3-4 feet, 14-15 sec.
No currents available.

Wednesday Night

Winds: NW, 10-15 kts.
Waves: N, 2-3 feet, 13-14 sec.
No currents available.

Thursday

Winds: NW, 10-15 kts.
Waves: N, 2-3 feet, 13-14 sec.
No currents available.

Thursday Night

Winds: NW, 10-15 kts.
Waves: N, 2-3 feet, 12-13 sec.
No currents available.

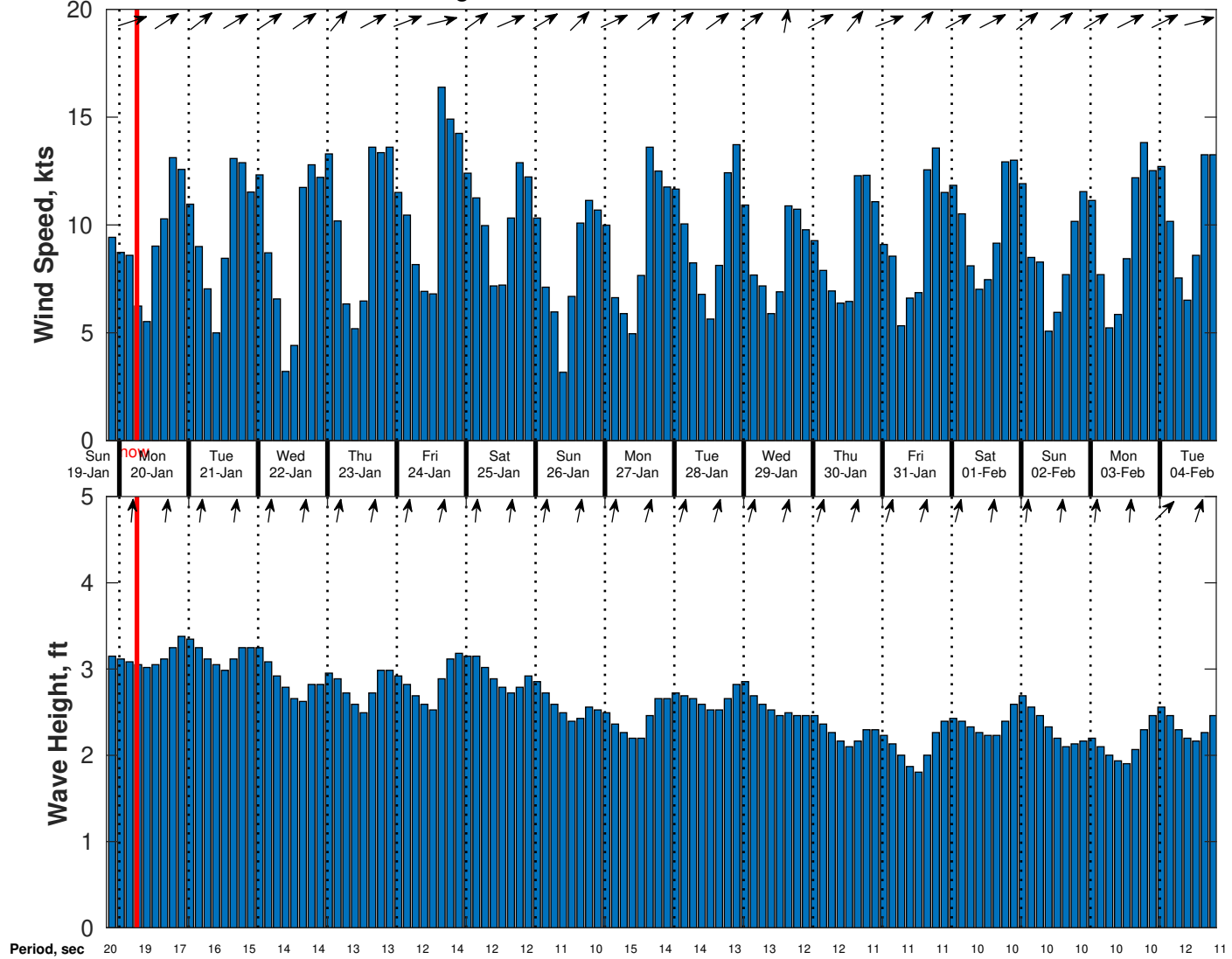
Friday

Winds: NW, 15-20 kts.
Waves: N, 2-3 feet, 12-13 sec.
No currents available.

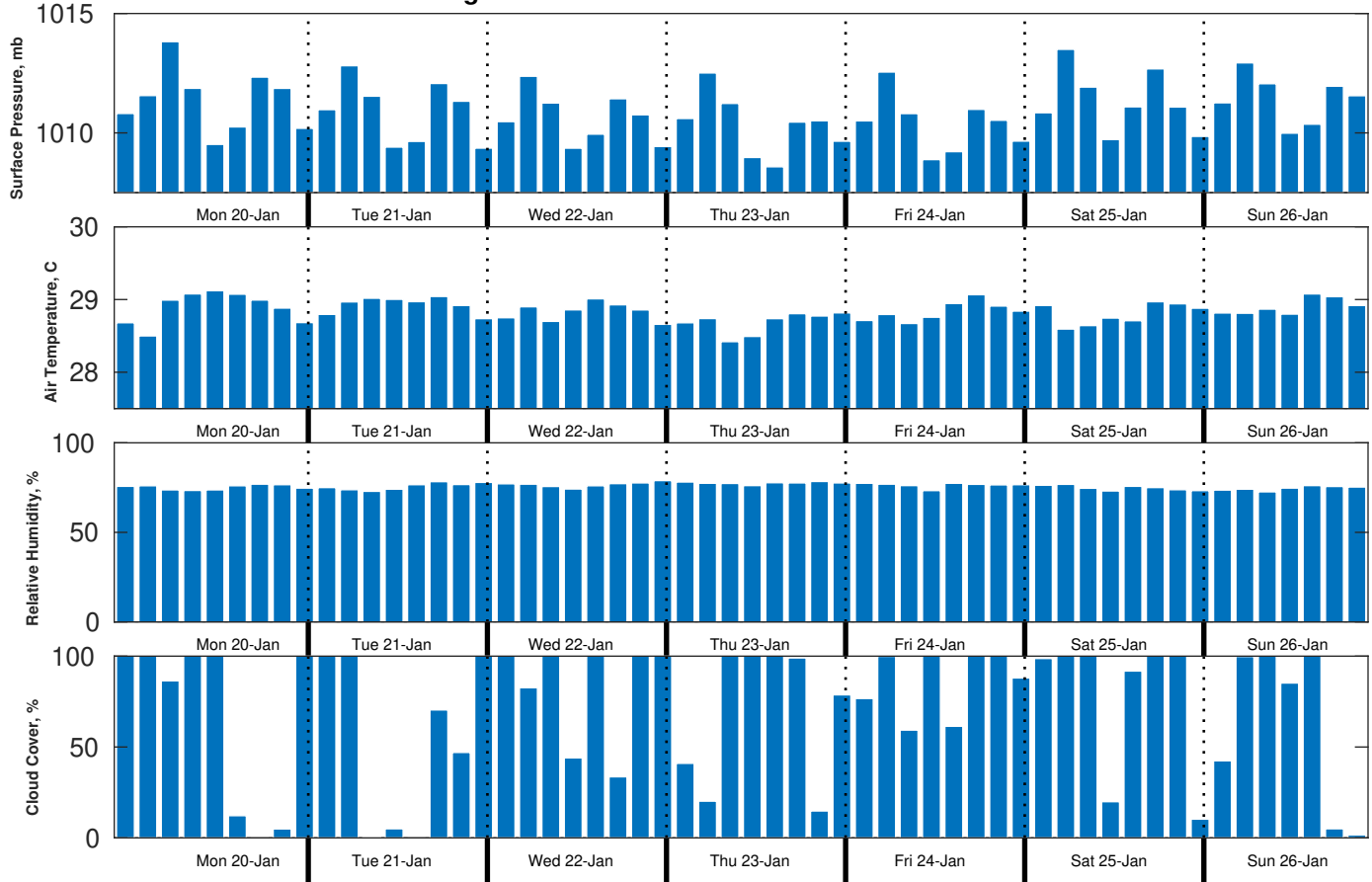
Friday Night

Winds: NW, 10-15 kts.
Waves: N, 3-4 feet, 13-14 sec.
No currents available.

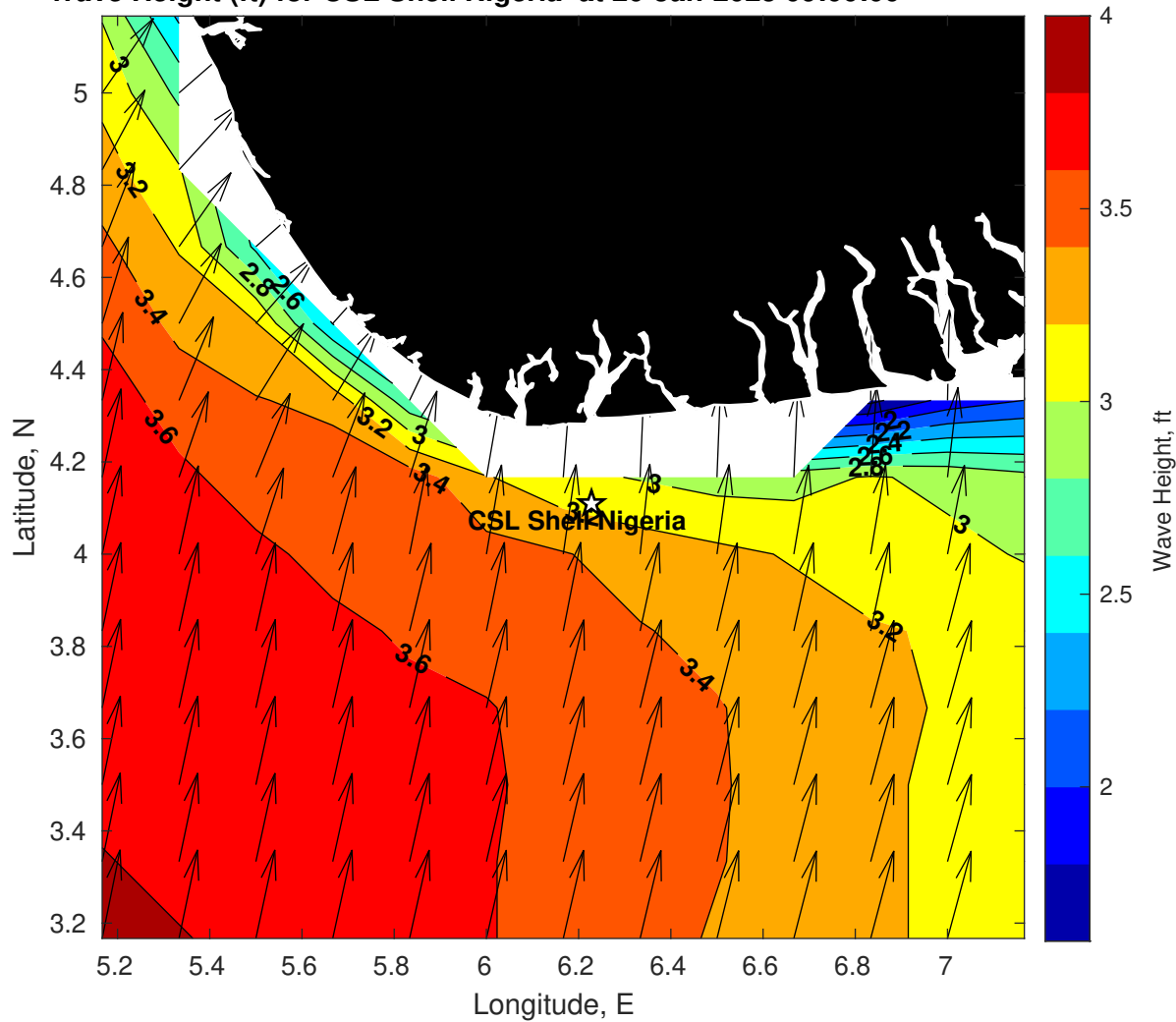
Wind & Wave Forecast for CSL Shell Nigeria from 19-Jan-2025 20:00:00 to 04-Feb-2025 20:00:00



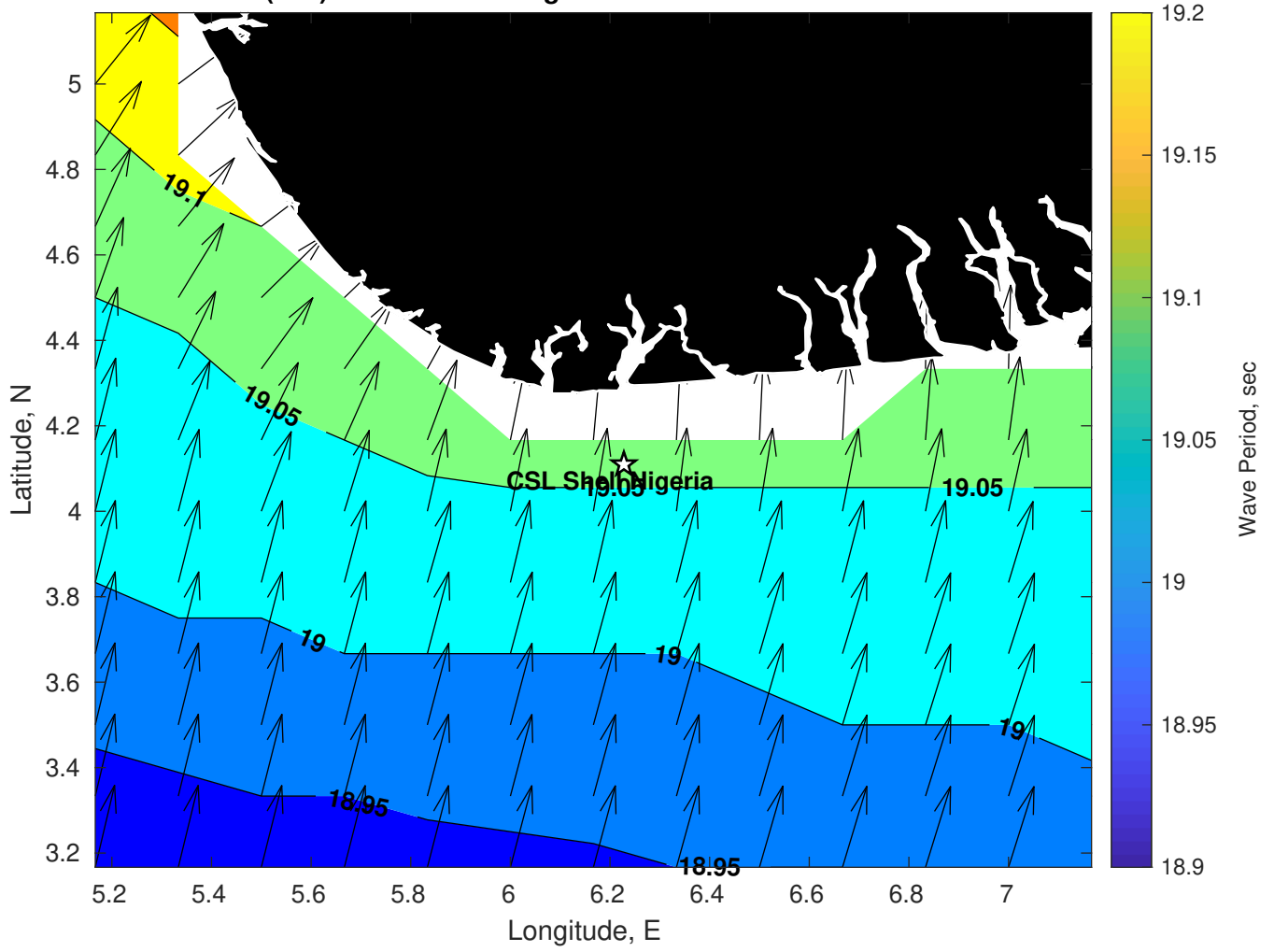
Met Forecast for CSL Shell Nigeria from 20-Jan-2025 00:00:00 to 27-Jan-2025 00:00:00



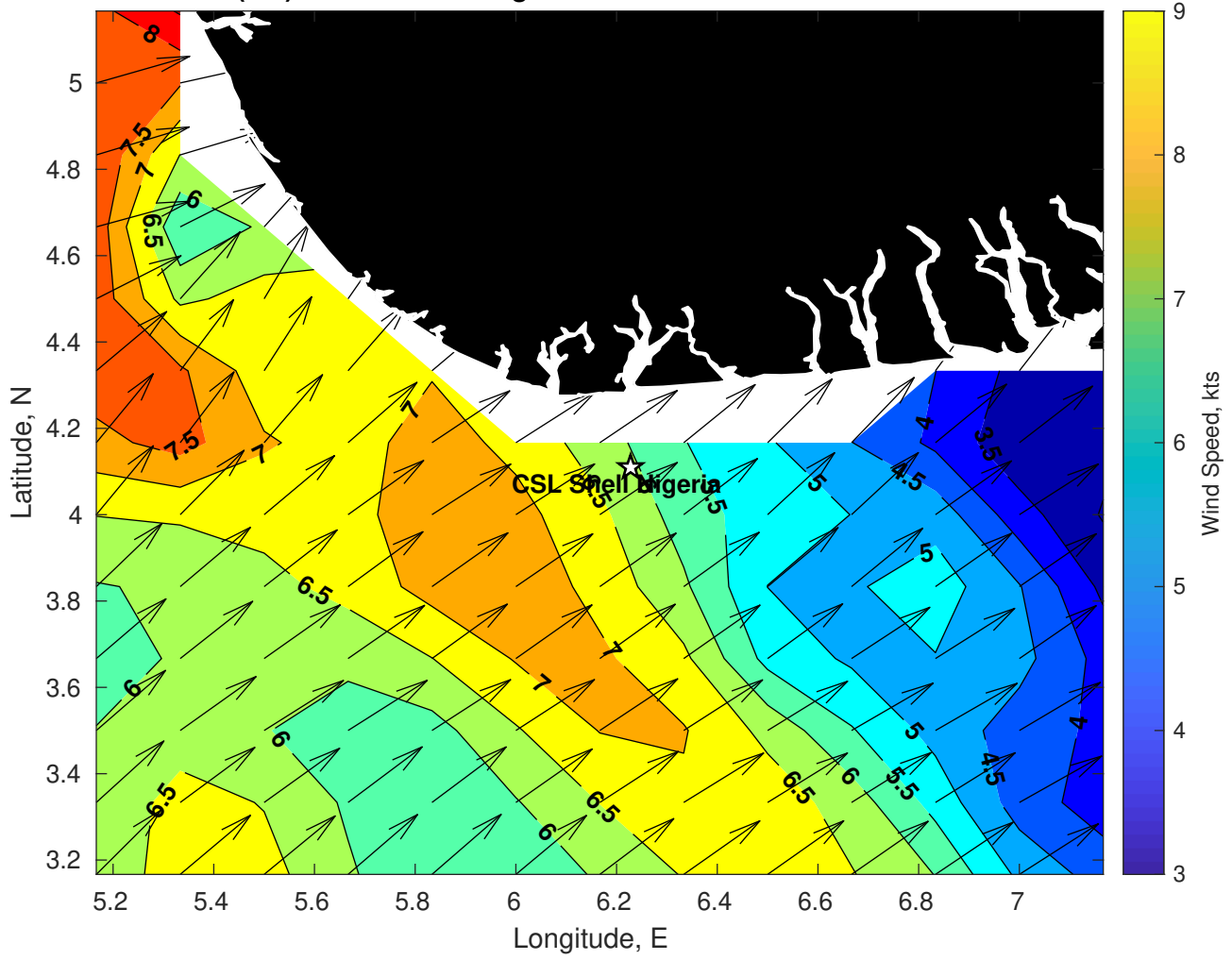
Wave Height (ft) for CSL Shell Nigeria at 20-Jan-2025 09:00:00



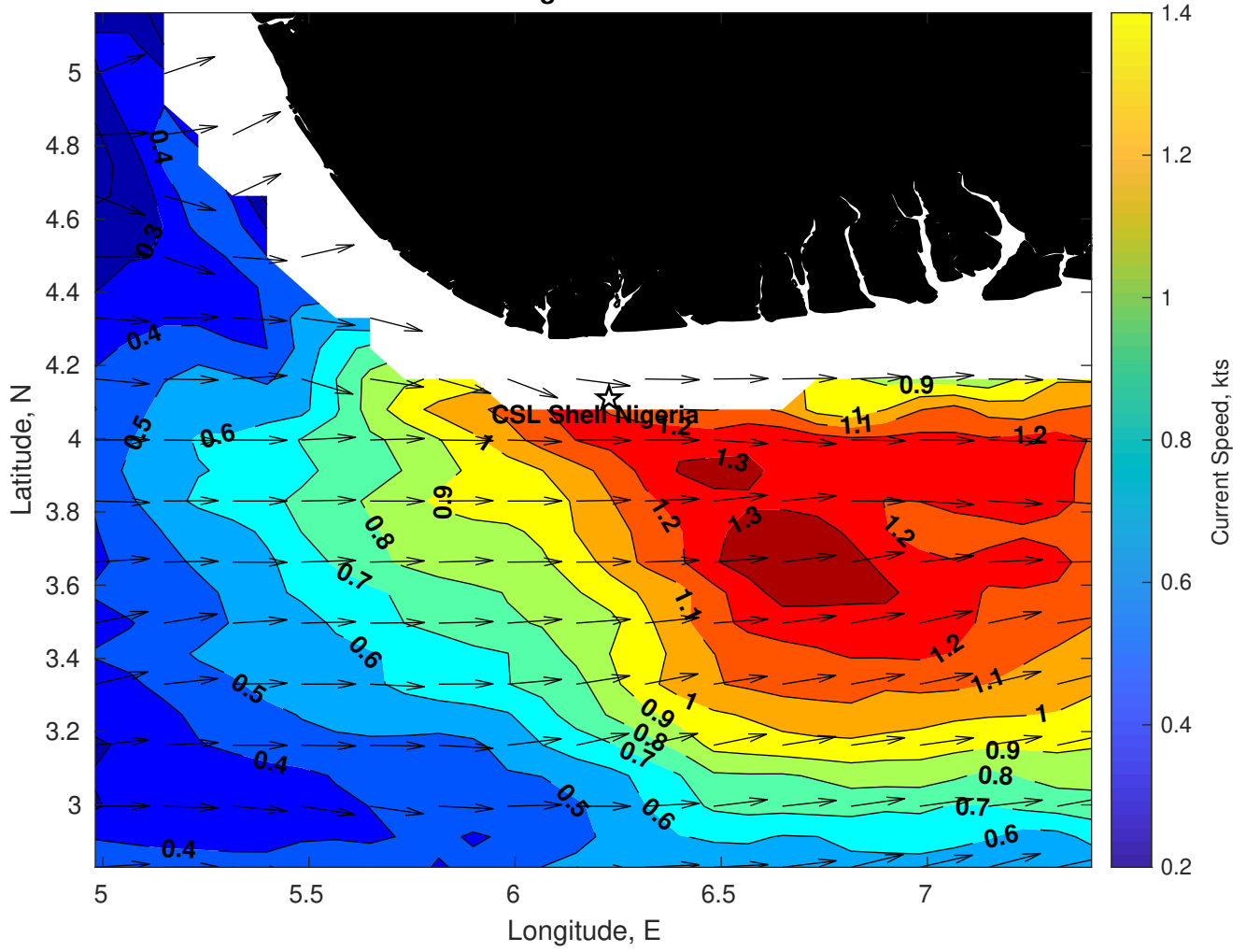
Wave Period (sec) for CSL Shell Nigeria at 20-Jan-2025 09:00:00



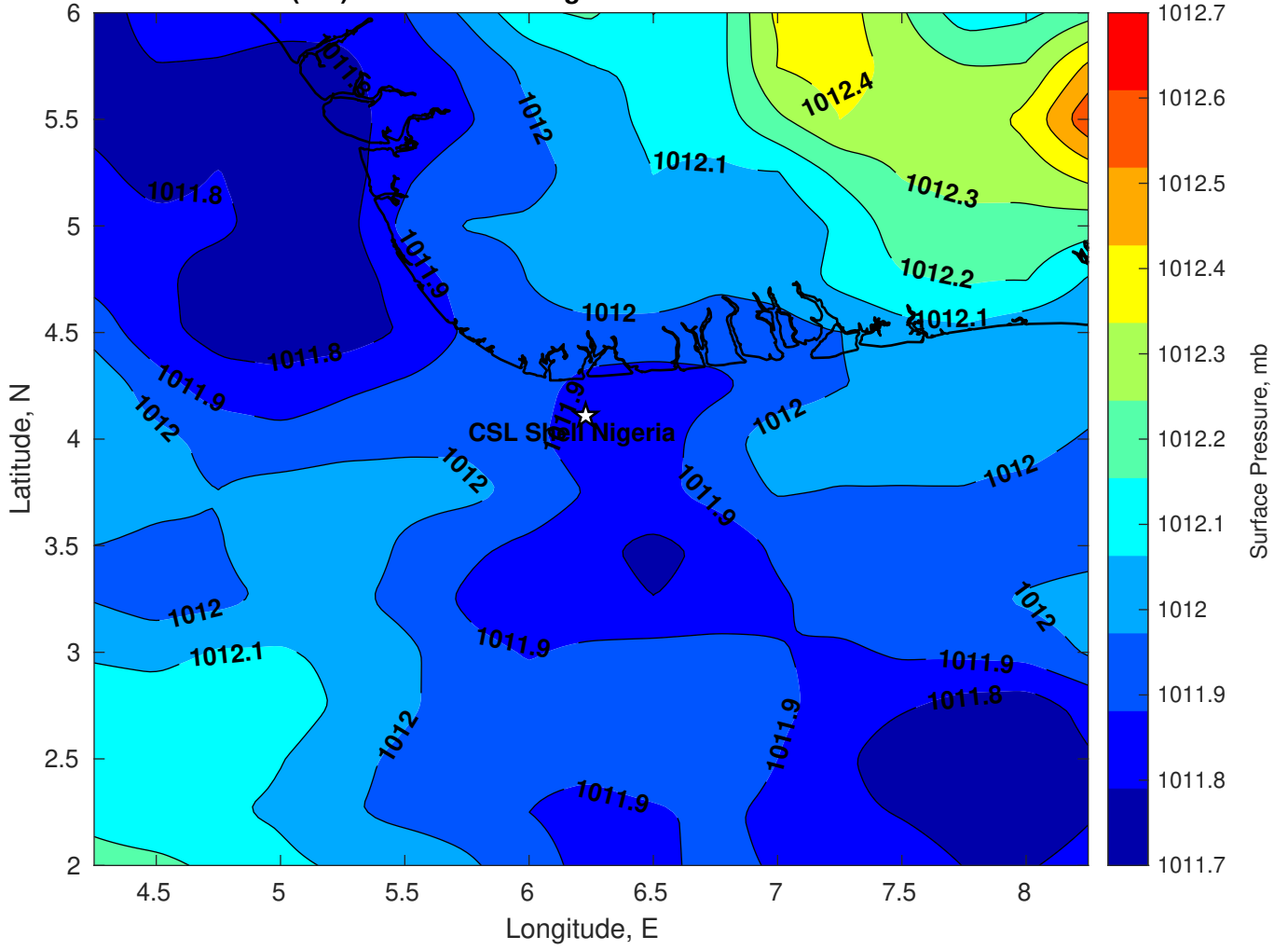
Winds (kts) for CSL Shell Nigeria at 20-Jan-2025 09:00:00



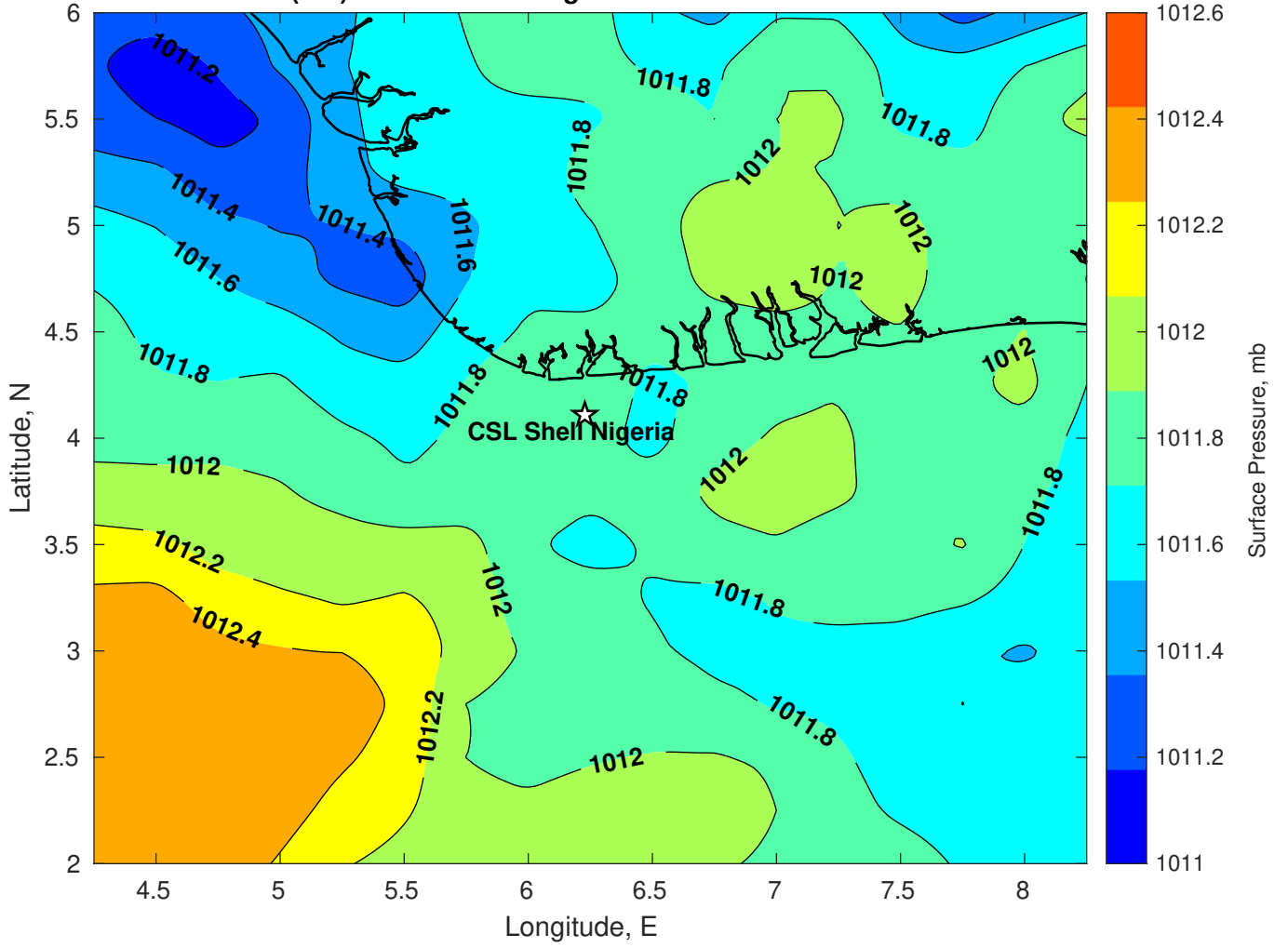
Surface Currents for CSL Shell Nigeria at 19-Jan-2025 00:00:00



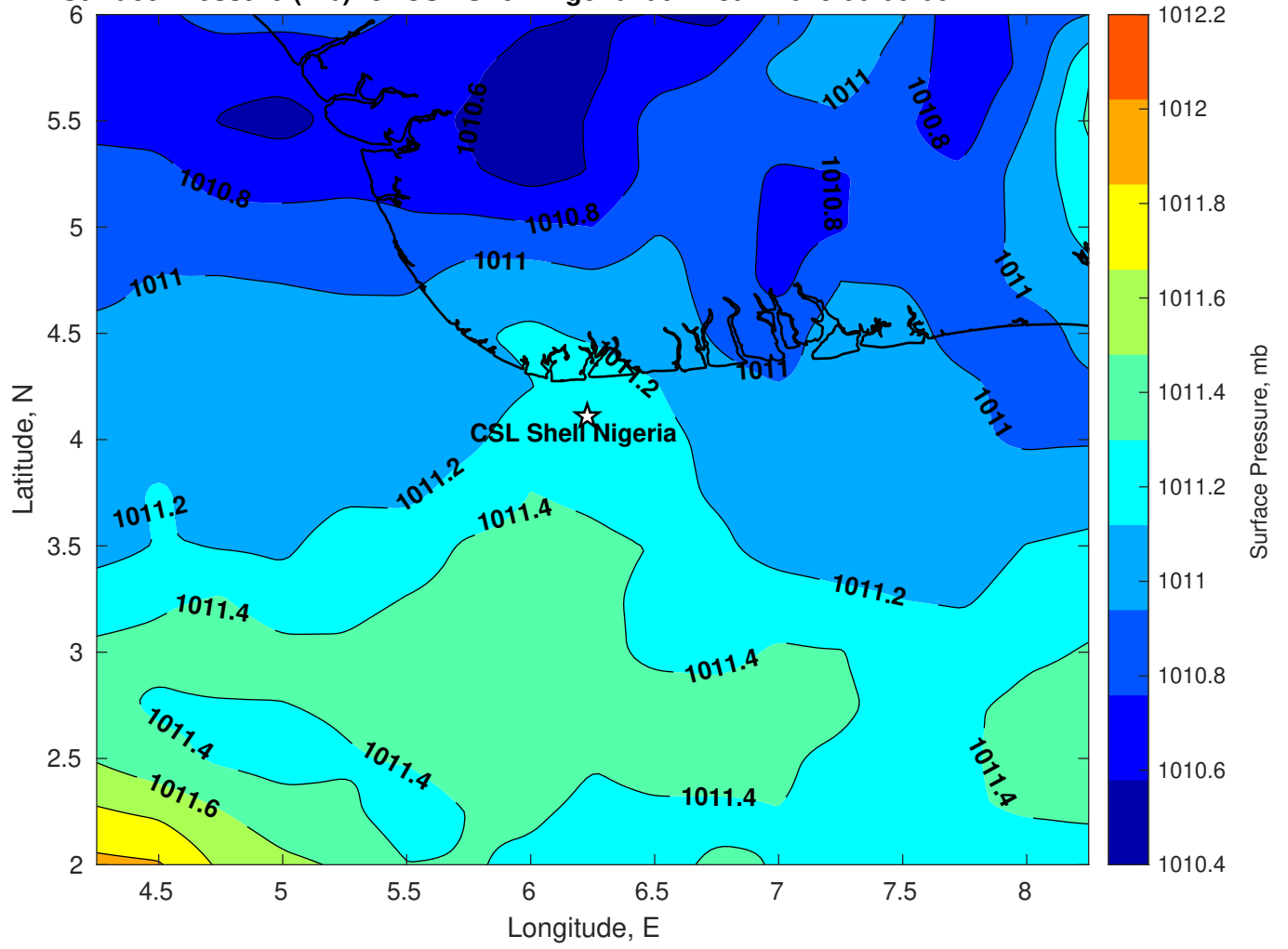
Surface Pressure (mb) for CSL Shell Nigeria at 20-Jan-2025 00:00:00



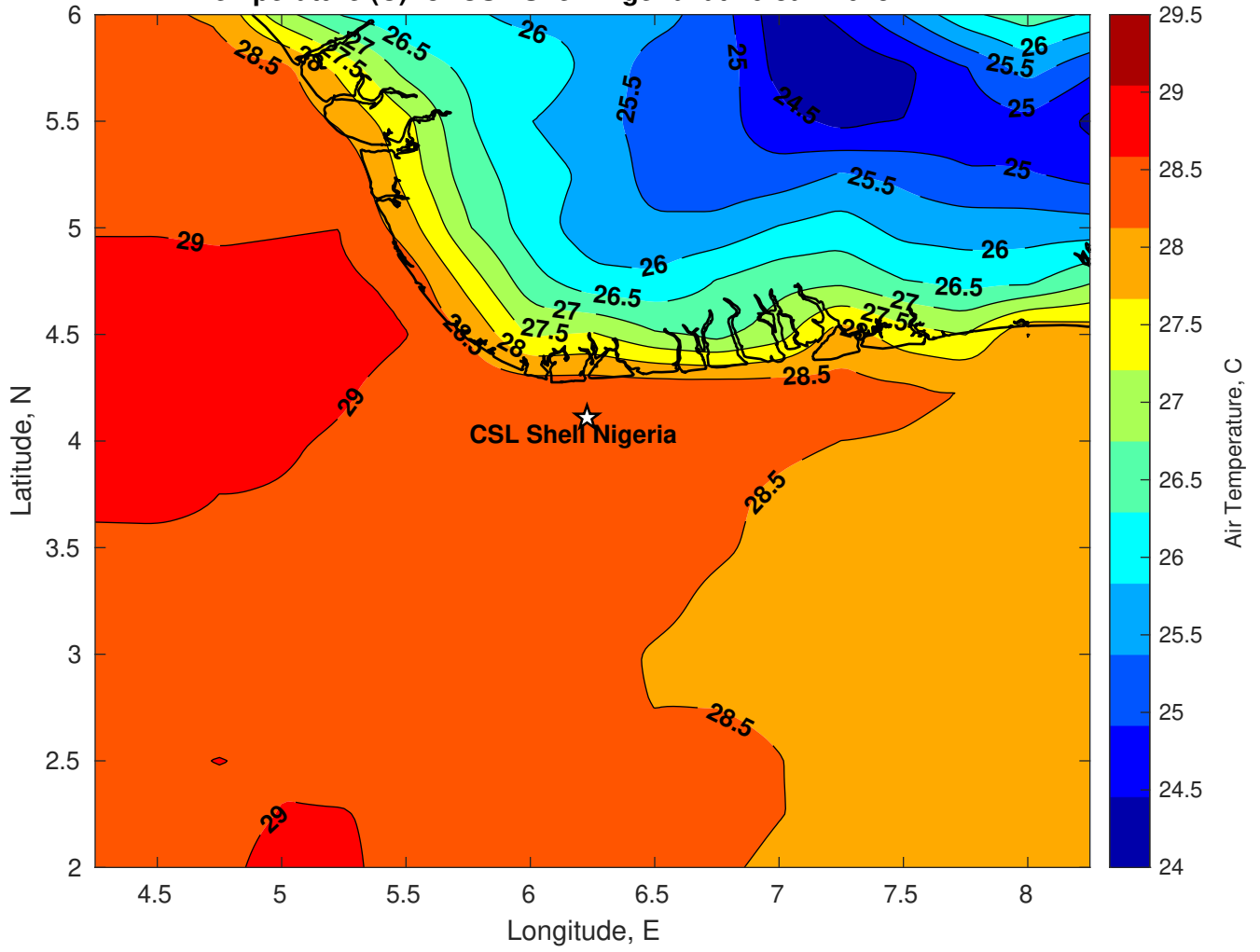
Surface Pressure (mb) for CSL Shell Nigeria at 21-Jan-2025 00:00:00



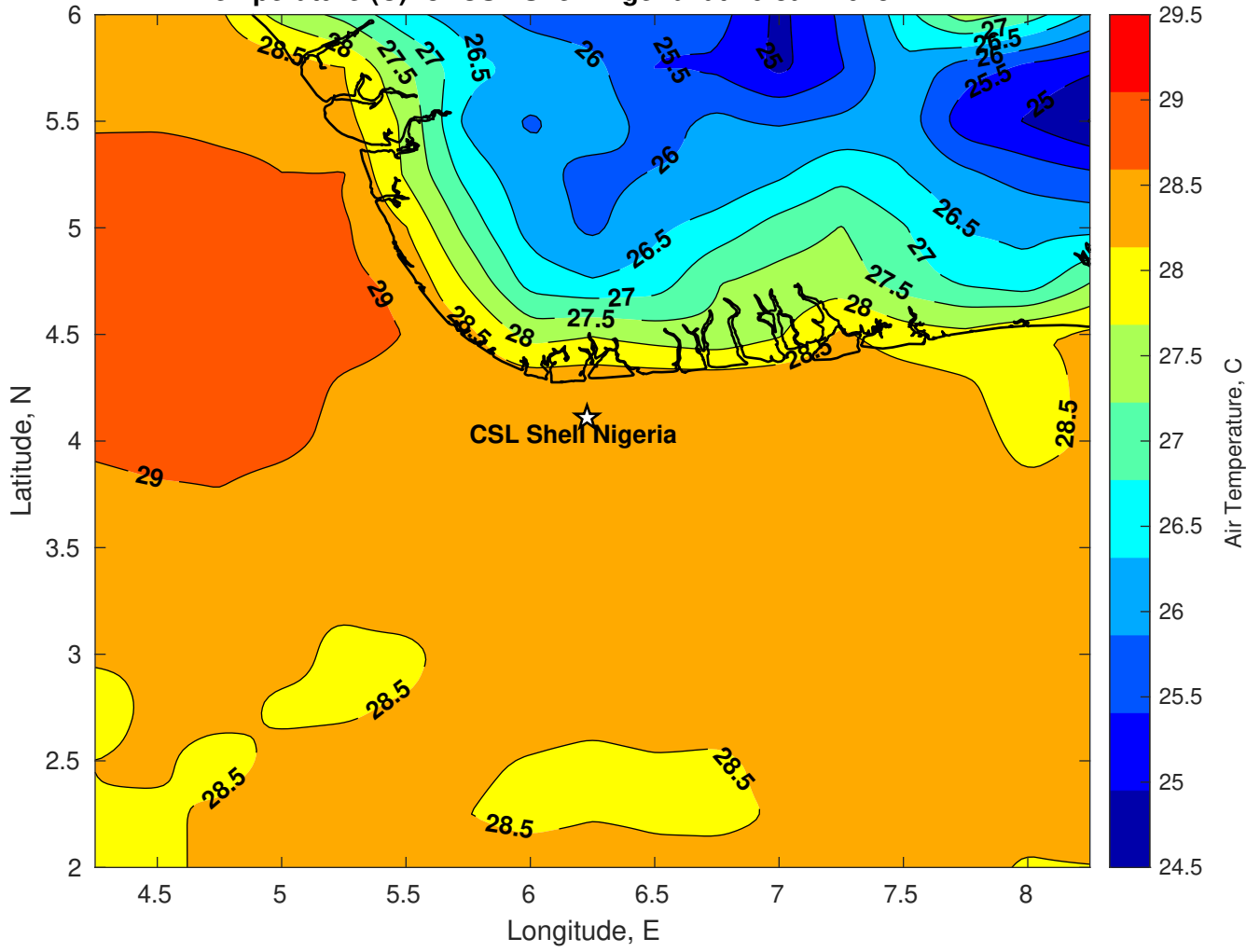
Surface Pressure (mb) for CSL Shell Nigeria at 22-Jan-2025 00:00:00



Air Temperature (C) for CSL Shell Nigeria at 20-Jan-2025



Air Temperature (C) for CSL Shell Nigeria at 20-Jan-2025



Air Temperature (C) for CSL Shell Nigeria at 20-Jan-2025

