

\*\*\*\*\*  
Marine Weather Forecast for Proteus  
Forecast valid as of 21-Jan-2025 0900 GMT  
\*\*\*\*\*

All times are local.

Today

Winds: NW, 10-15 kts.  
Waves: N, 2-3 feet, 16-17 sec.  
No currents available.

Tonight

Winds: NW, 10-15 kts.  
Waves: N, 3-4 feet, 15-16 sec.  
No currents available.

Wednesday

Winds: NW, 10-15 kts.  
Waves: N, 3-4 feet, 14-15 sec.  
No currents available.

Wednesday Night

Winds: NW, 10-15 kts.  
Waves: N, 3-4 feet, 13-14 sec.  
No currents available.

Thursday

Winds: N, 10-15 kts.  
Waves: N, 2-3 feet, 13-14 sec.  
No currents available.

Thursday Night

Winds: NW, 10-15 kts.  
Waves: N, 2-3 feet, 12-13 sec.  
No currents available.

Friday

Winds: NW, 10-15 kts.  
Waves: N, 2-3 feet, 11-12 sec.  
No currents available.

Friday Night

Winds: NW, 10-15 kts.  
Waves: N, 2-3 feet, 13-14 sec.  
No currents available.

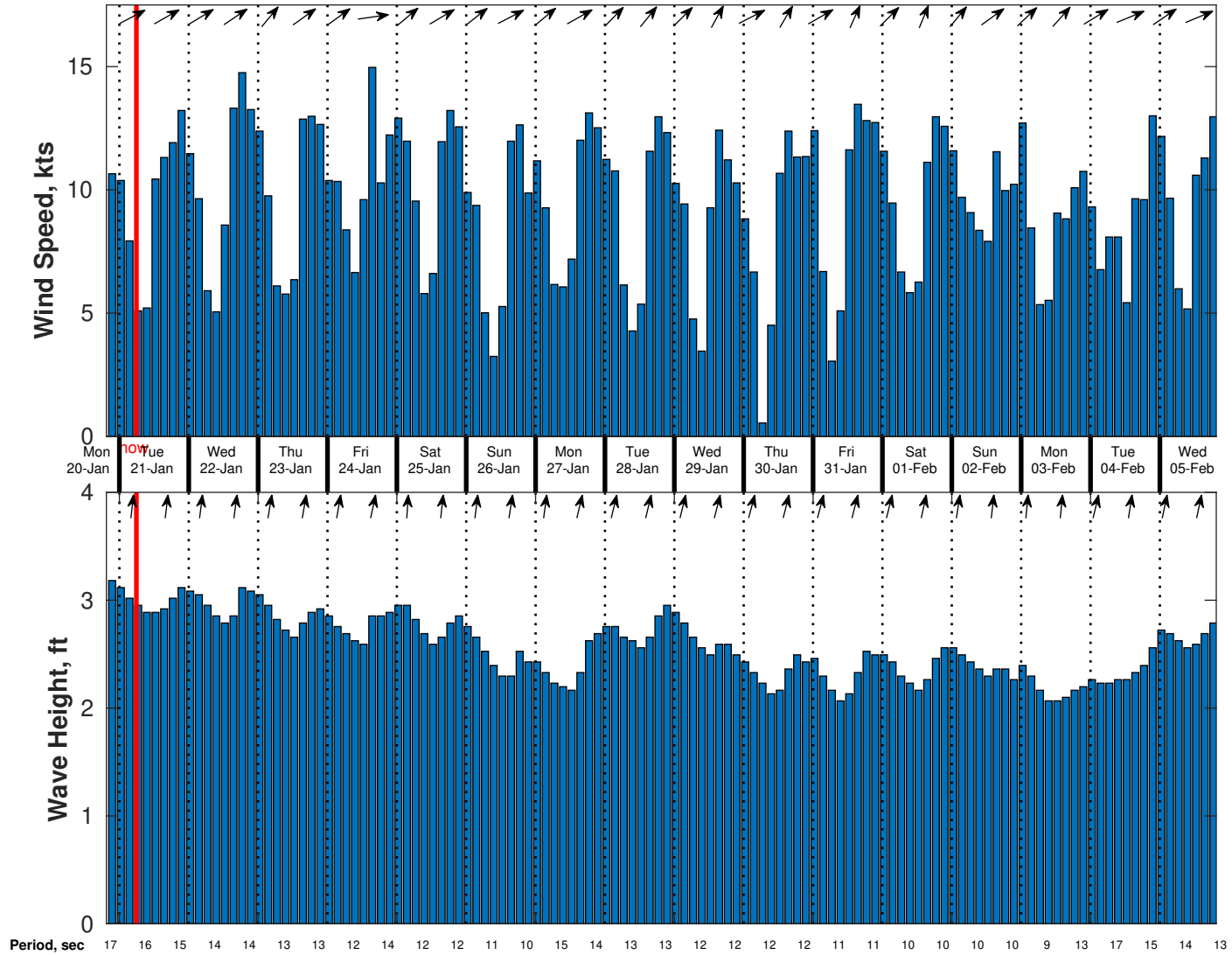
Saturday

Winds: NW, 10-15 kts.  
Waves: N, 2-3 feet, 12-13 sec.  
No currents available.

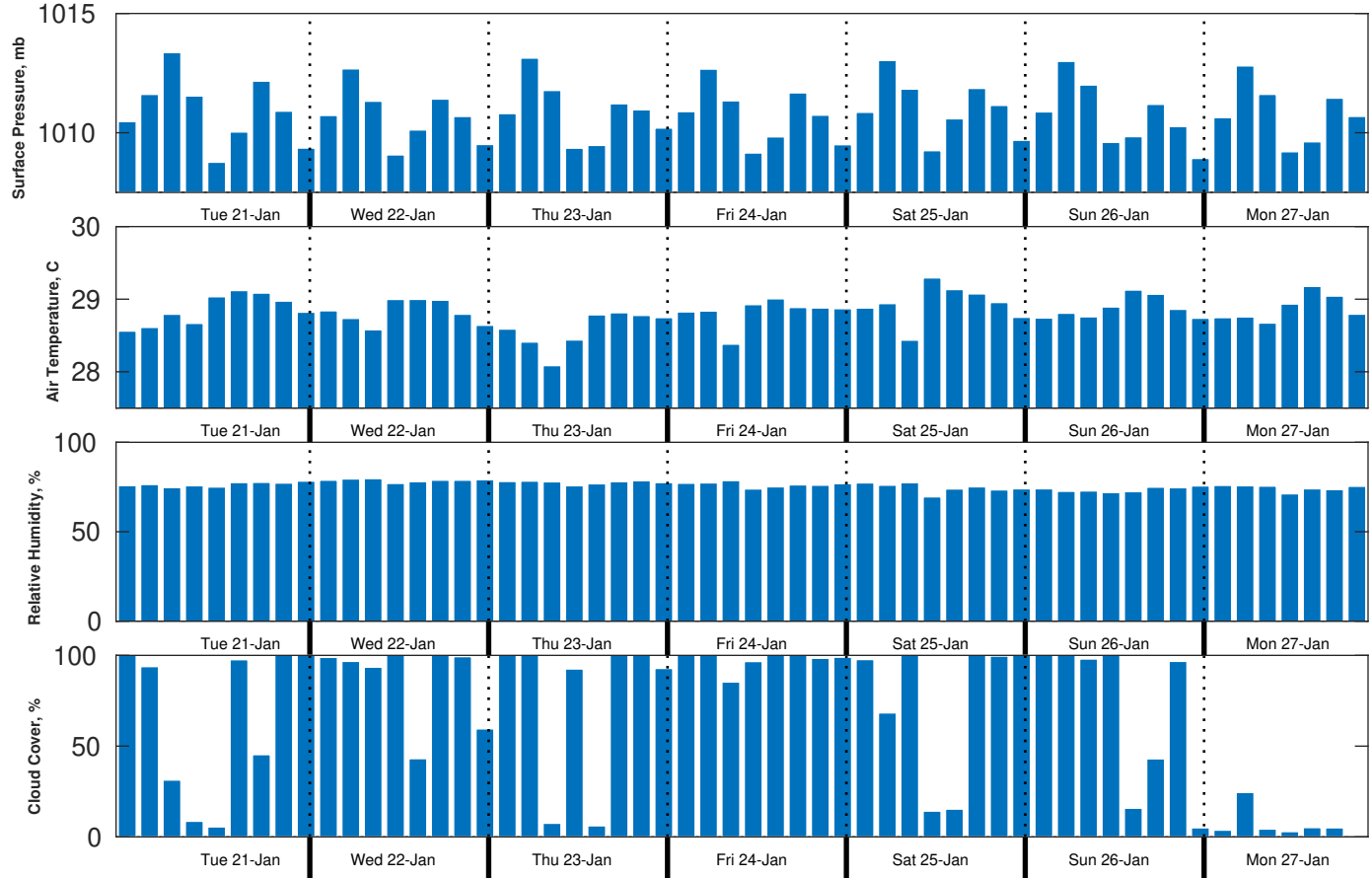
Saturday Night

Winds: NW, 10-15 kts.  
Waves: N, 2-3 feet, 11-12 sec.  
No currents available.

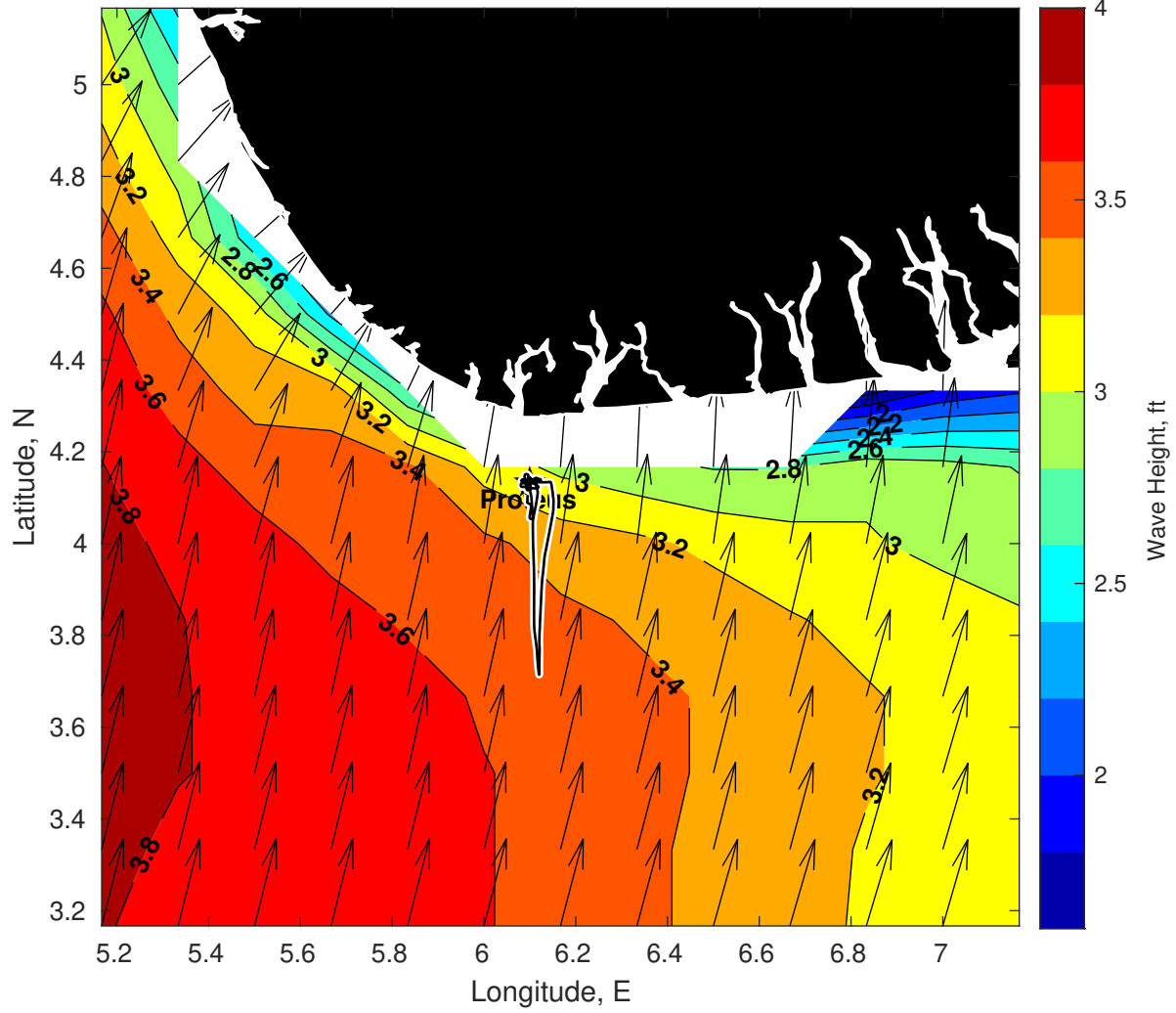
Wind & Wave Forecast for Proteus from 20-Jan-2025 20:00:00 to 05-Feb-2025 20:00:00



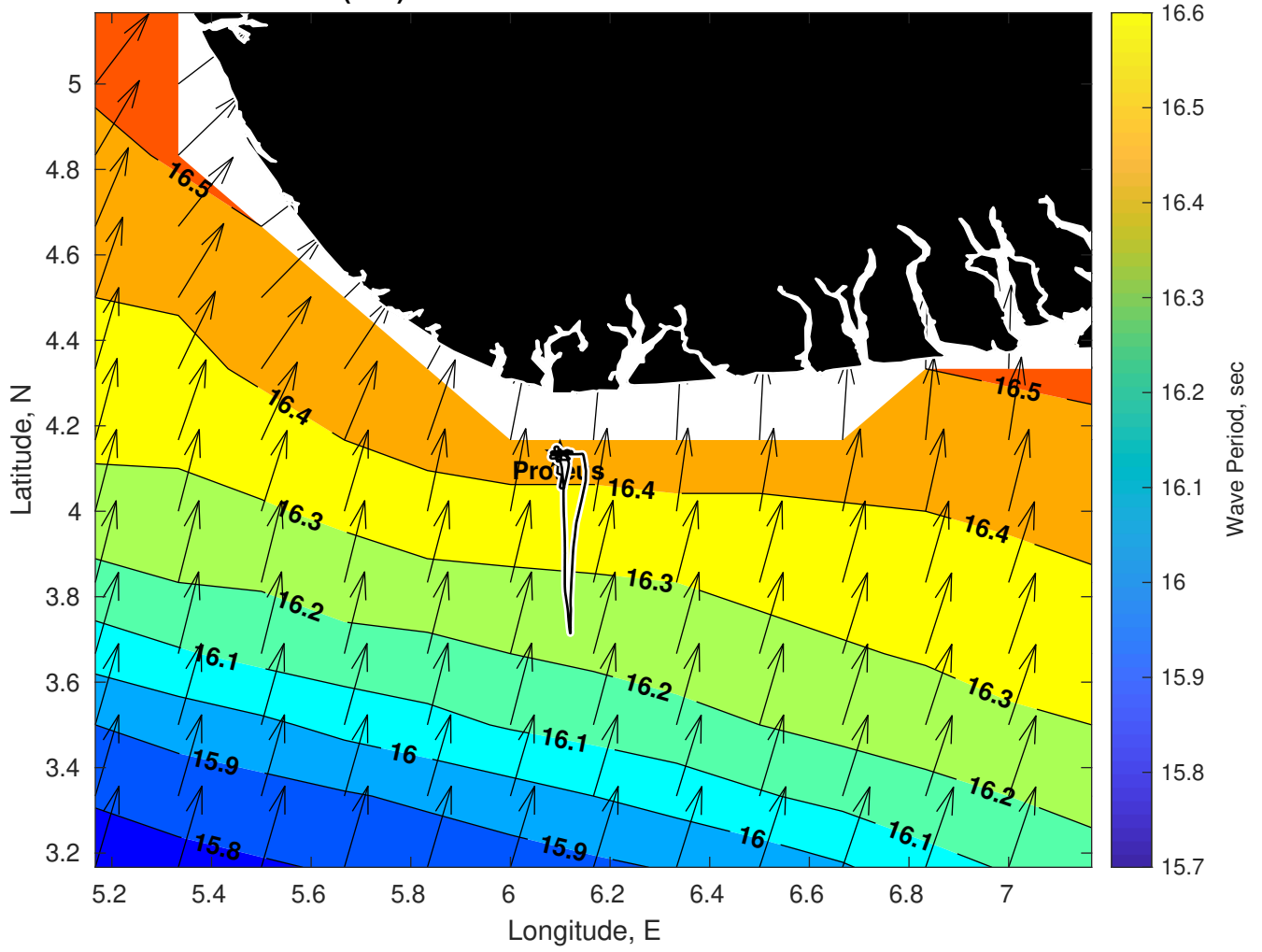
### Met Forecast for Proteus from 21-Jan-2025 00:00:00 to 28-Jan-2025 00:00:00



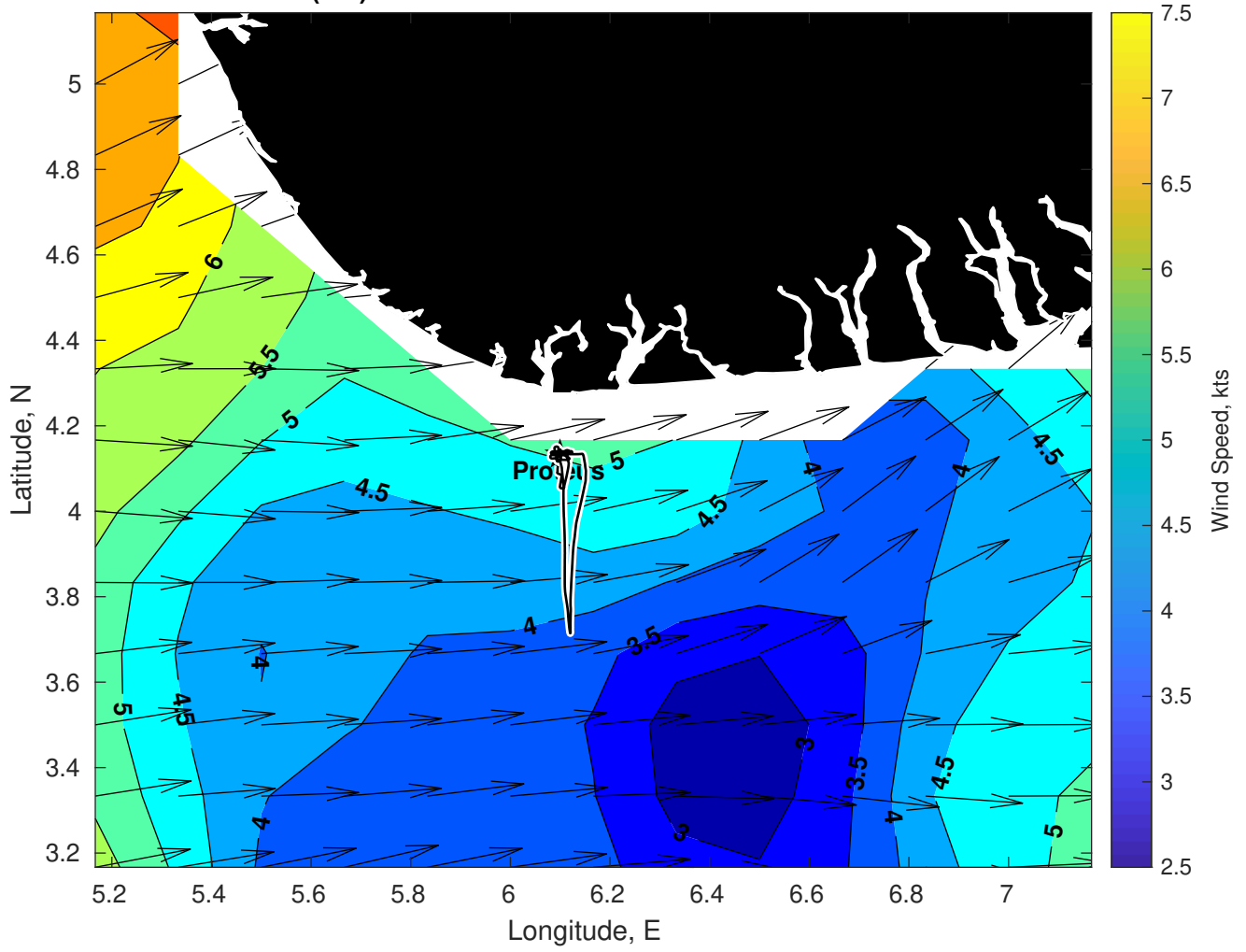
Wave Height (ft) for Proteus at 21-Jan-2025 09:00:00



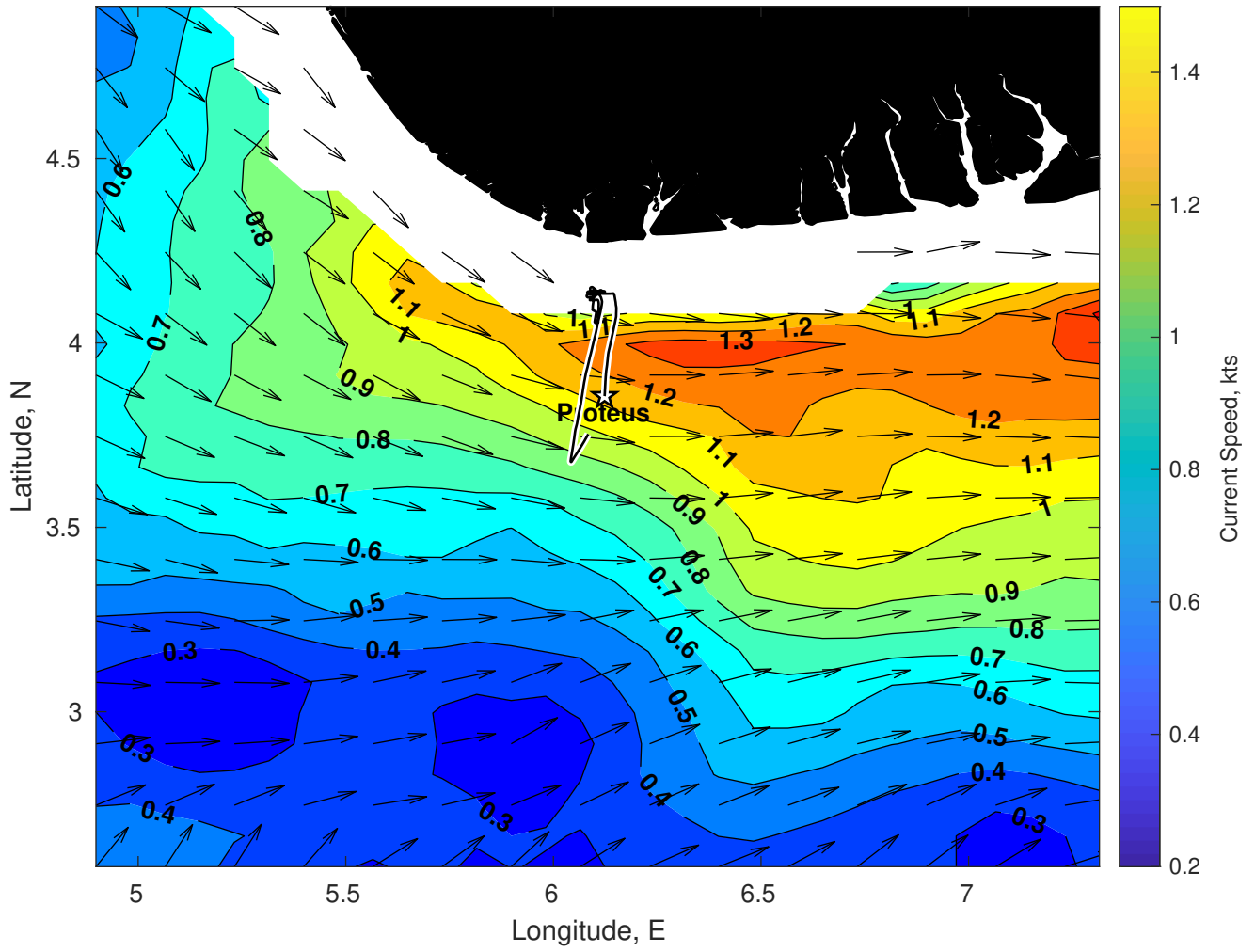
Wave Period (sec) for Proteus at 21-Jan-2025 09:00:00



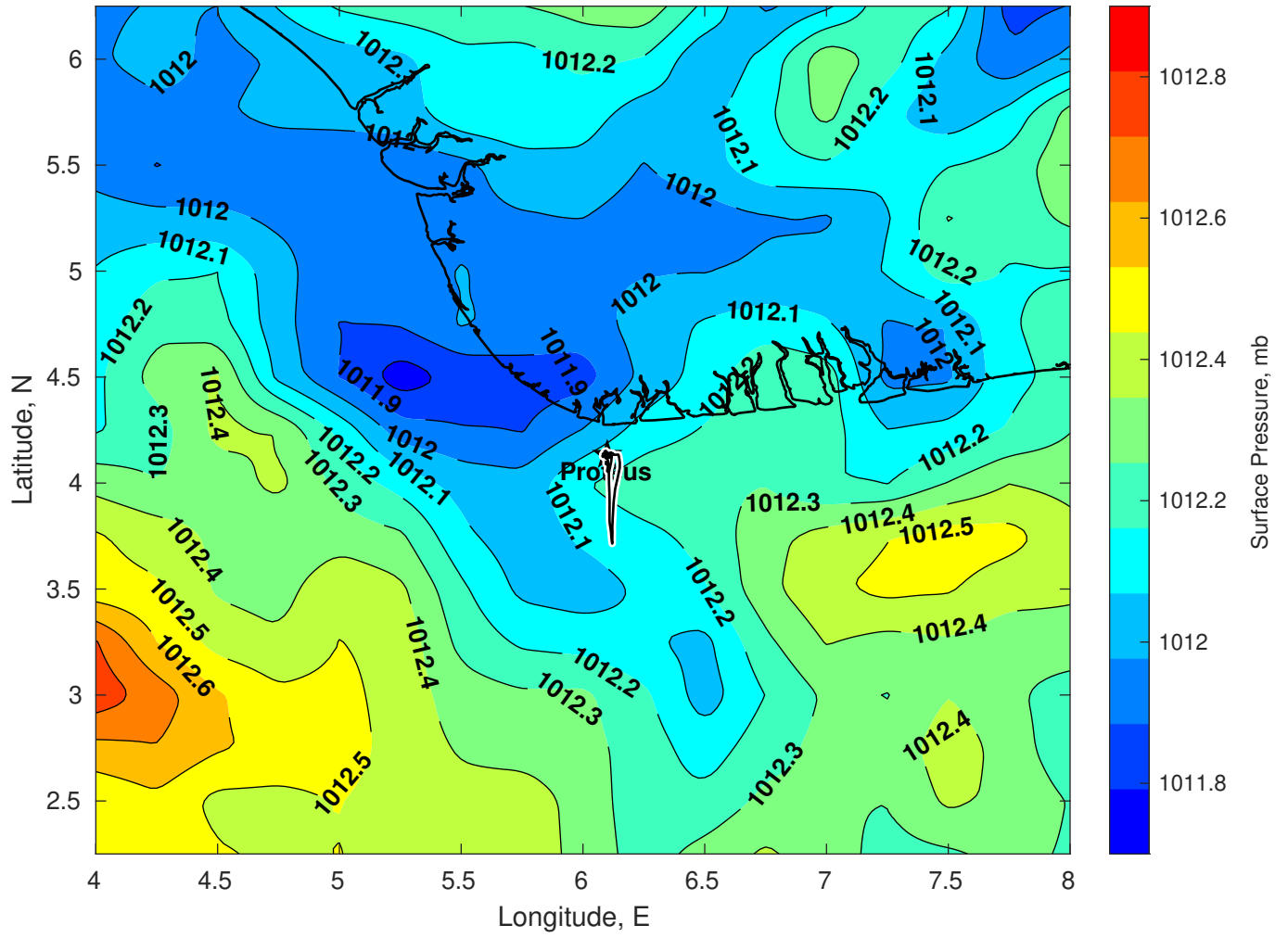
Winds (kts) for Proteus at 21-Jan-2025 09:00:00



Surface Currents for Proteus at 20-Jan-2025 00:00:00

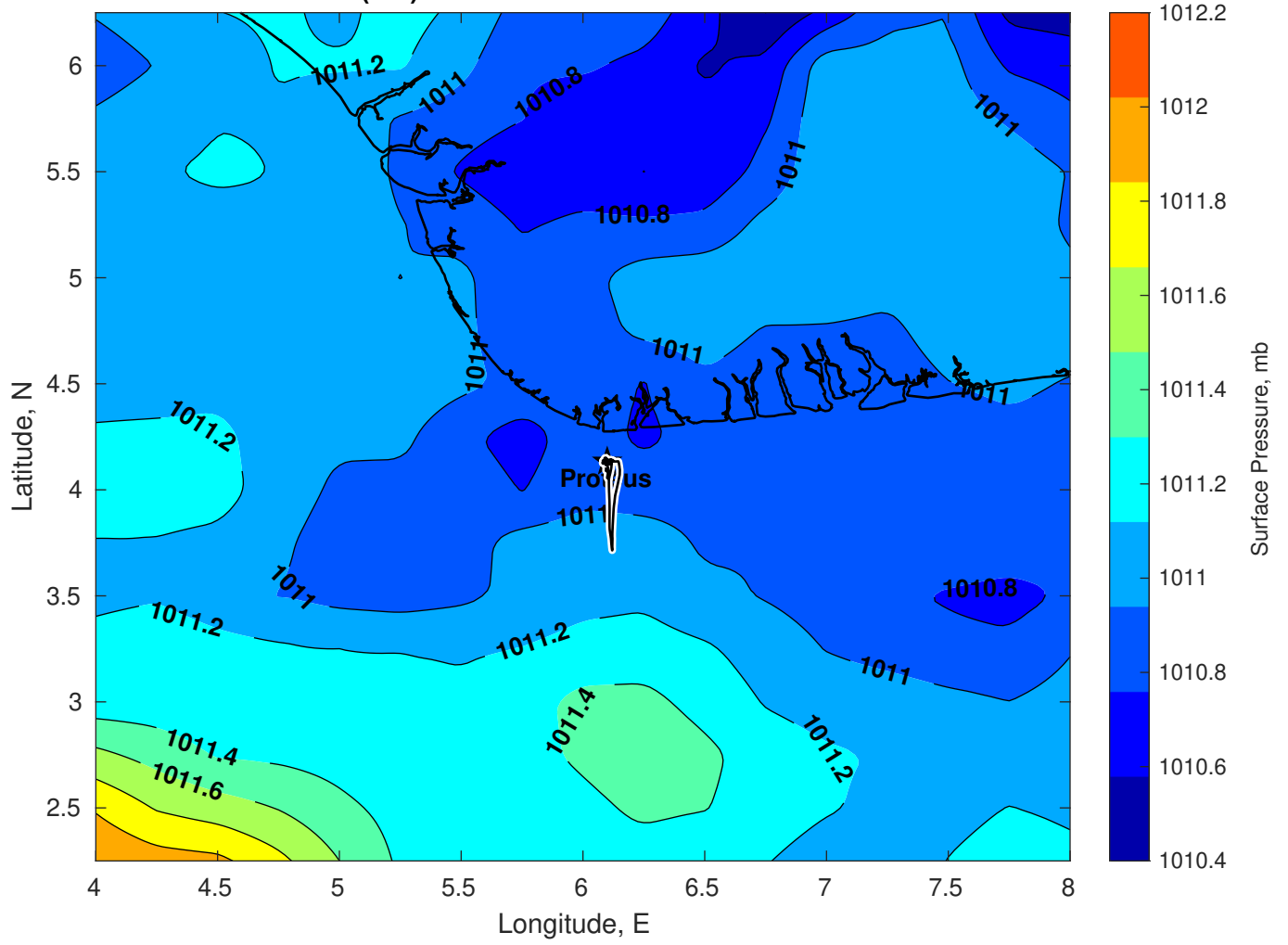


Surface Pressure (mb) for Proteus at 21-Jan-2025 00:00:00

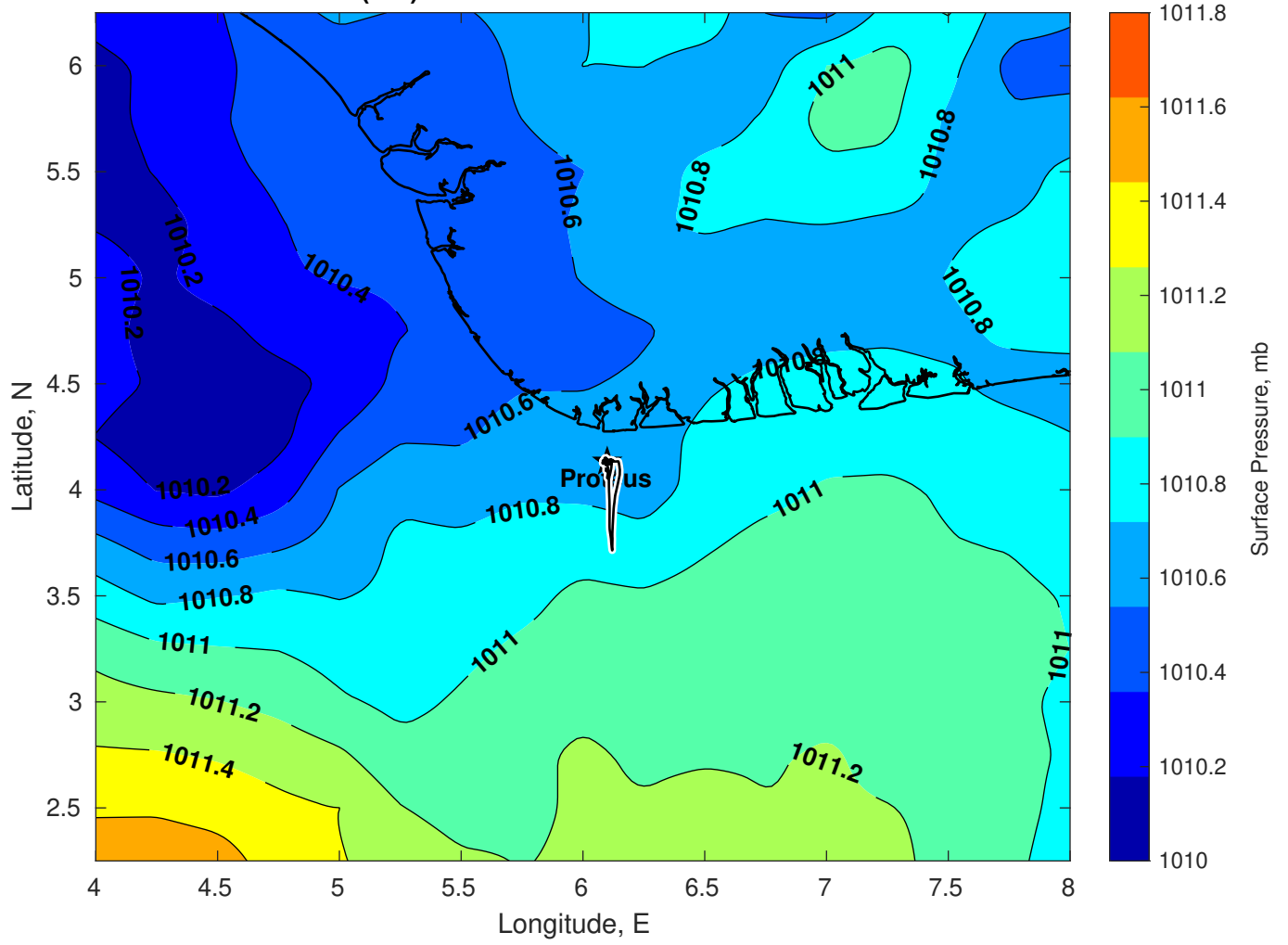




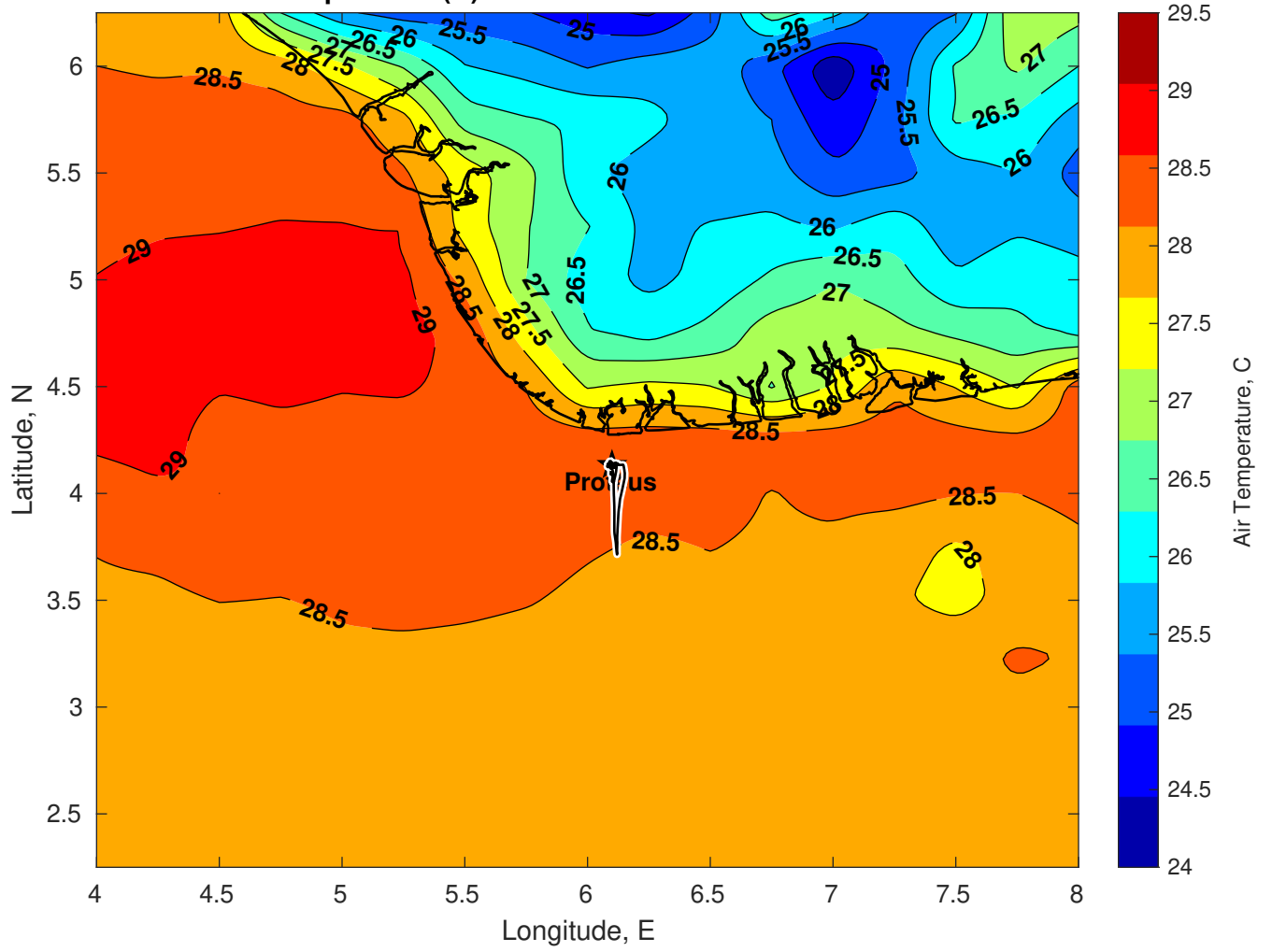
Surface Pressure (mb) for Proteus at 22-Jan-2025 00:00:00



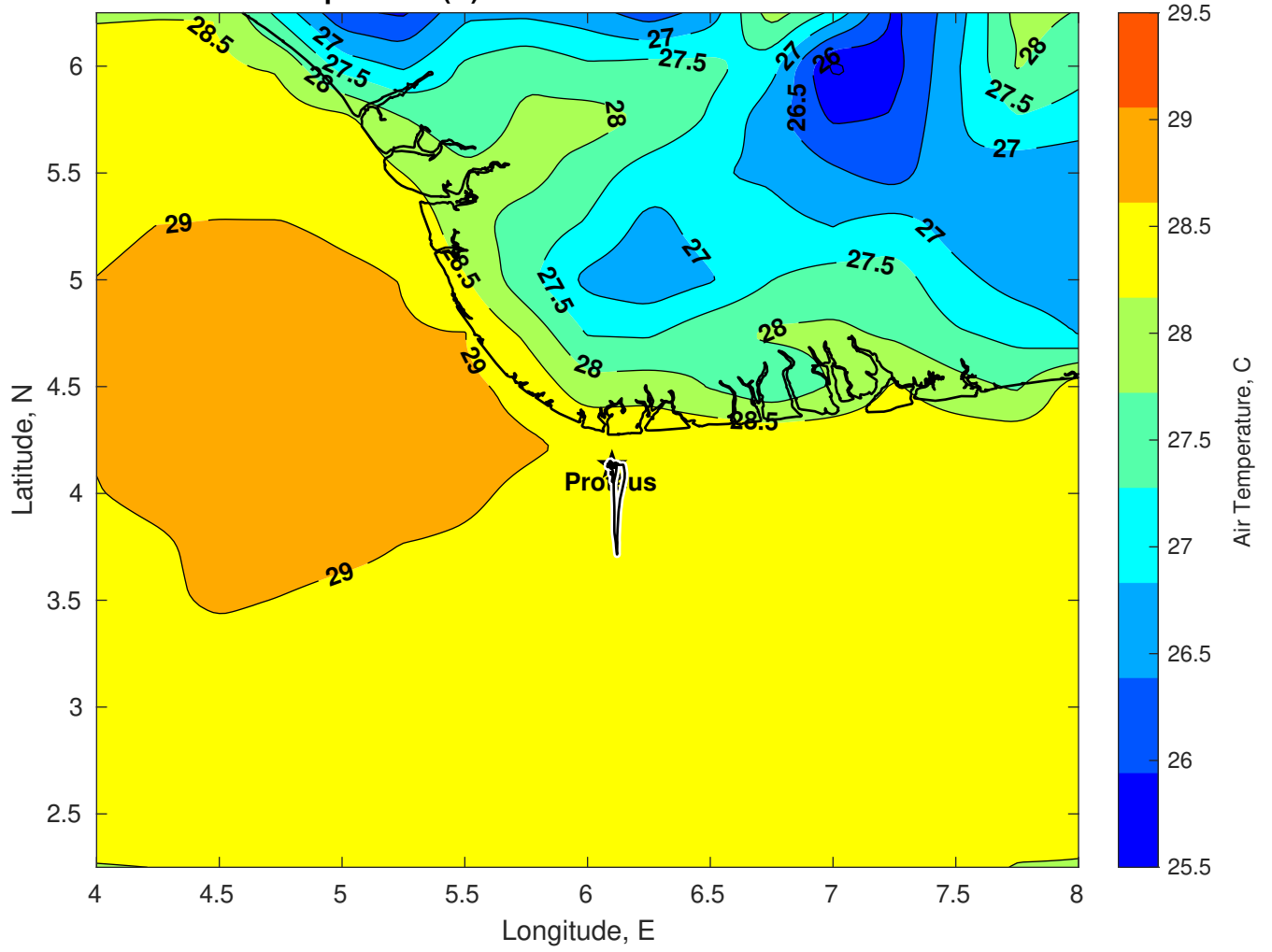
Surface Pressure (mb) for Proteus at 23-Jan-2025 00:00:00



Air Temperature (C) for Proteus at 21-Jan-2025



**Air Temperature (C) for Proteus at 21-Jan-2025**



Air Temperature (C) for Proteus at 21-Jan-2025

