
Marine Weather Forecast for TOTAL Namibia GTS
Forecast valid as of 26-Jan-2025 0900 GMT

All times are local.

Today

Winds: N, 20-25 kts.
Waves: NW, 6-7 feet, 11-12 sec.
No currents available.

Tonight

Winds: NE, 20-25 kts.
Waves: N, 7-8 feet, 11-12 sec.
No currents available.

Monday

Winds: NE, 25-30 kts.
Waves: N, 10-11 feet, 8-9 sec.
No currents available.

Monday Night

Winds: NE, 25-30 kts.
Waves: N, 10-11 feet, 9-10 sec.
No currents available.

Tuesday

Winds: N, 15-20 kts.
Waves: N, 10-11 feet, 9-10 sec.
No currents available.

Tuesday Night

Winds: N, 10-15 kts.
Waves: N, 7-8 feet, 9-10 sec.
No currents available.

Wednesday

Winds: NW, 10-15 kts.
Waves: N, 6-7 feet, 9-10 sec.
No currents available.

Wednesday Night

Winds: NW, 10-15 kts.
Waves: N, 5-6 feet, 9-10 sec.
No currents available.

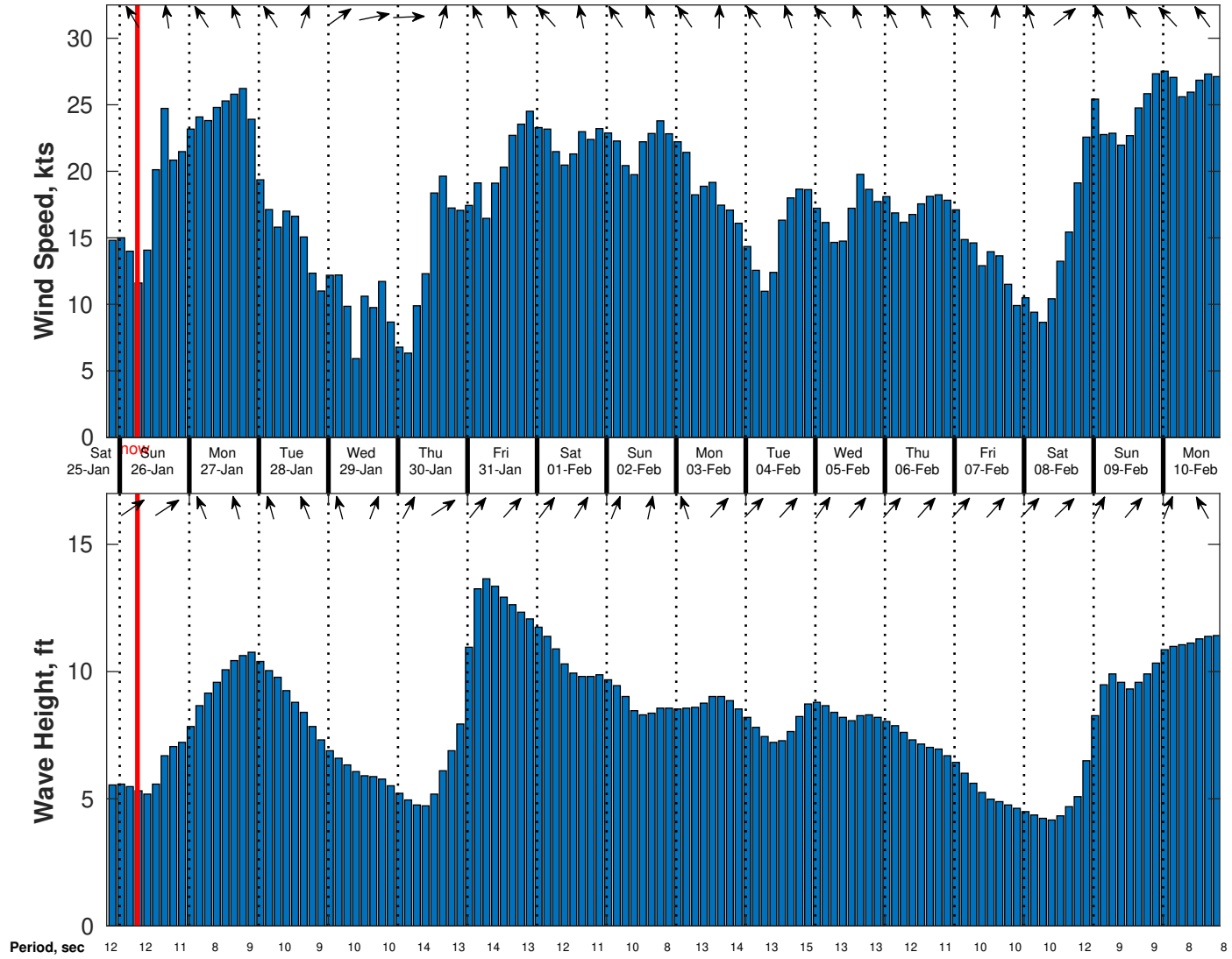
Thursday

Winds: N, 15-20 kts.
Waves: NW, 6-7 feet, 14-15 sec.
No currents available.

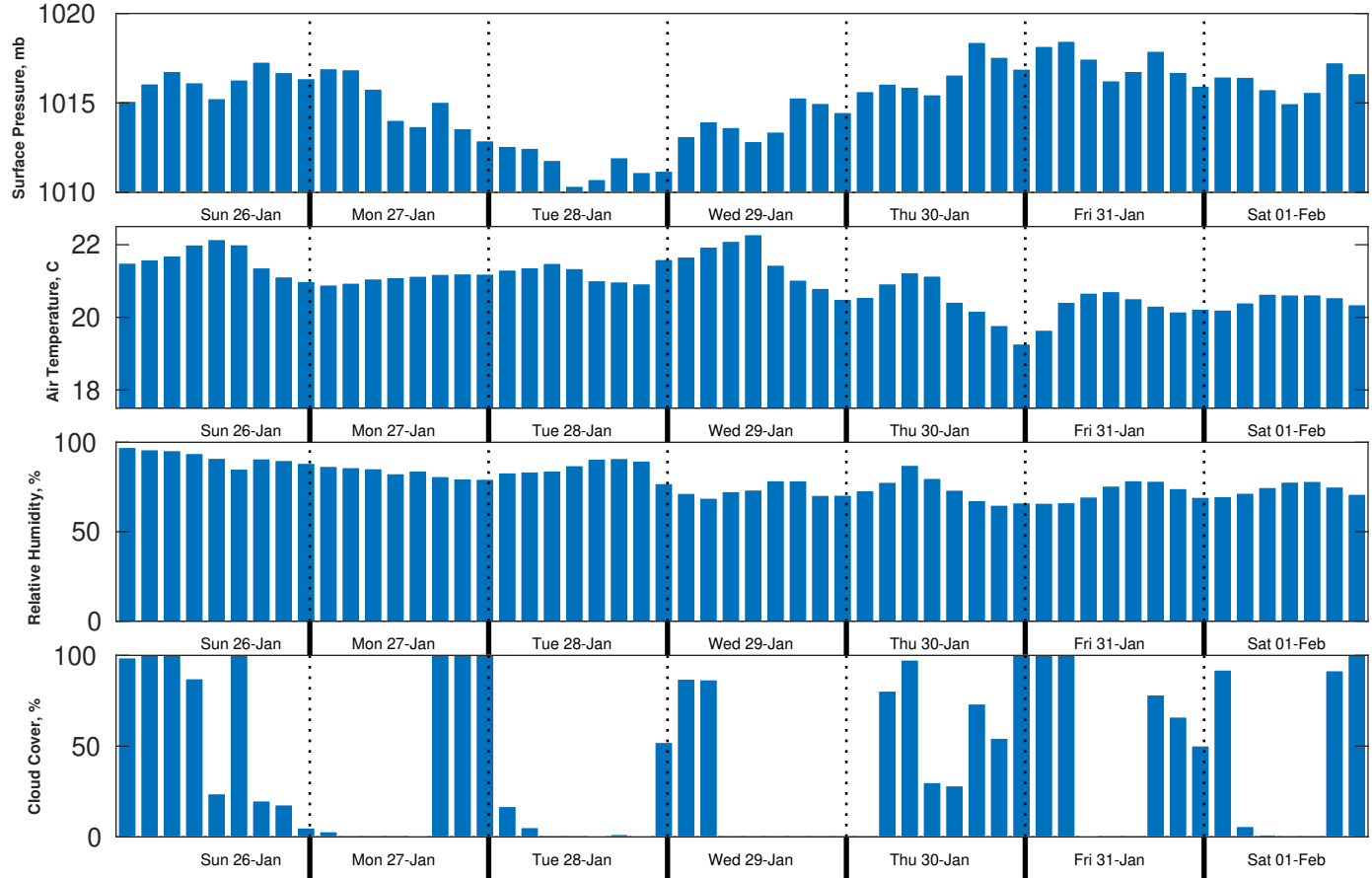
Thursday Night

Winds: N, 15-20 kts.
Waves: NW, 10-11 feet, 15-16 sec.
No currents available.

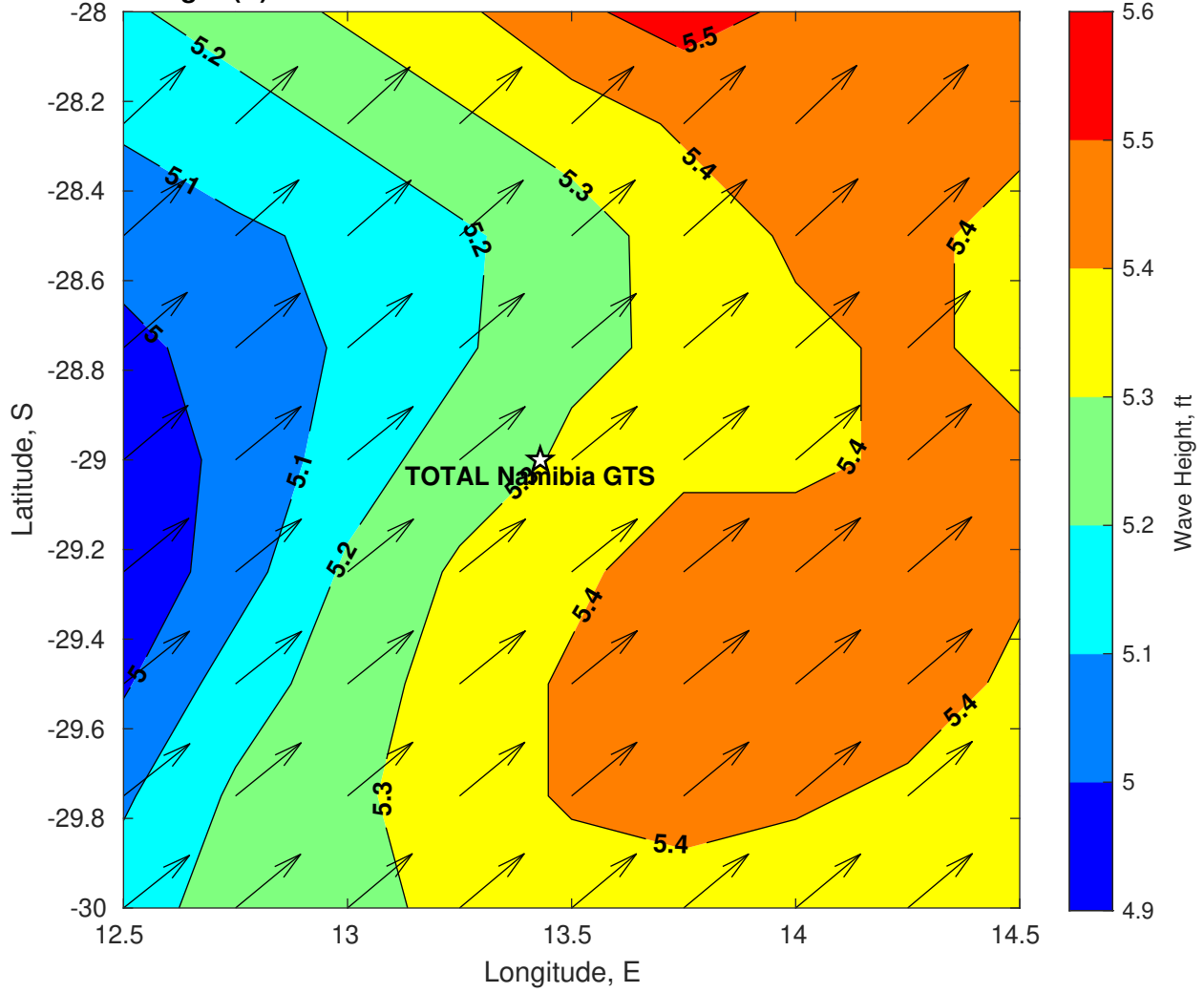
Wind & Wave Forecast for TOTAL Namibia GTS from 25-Jan-2025 20:00:00 to 10-Feb-2025 20:00:00



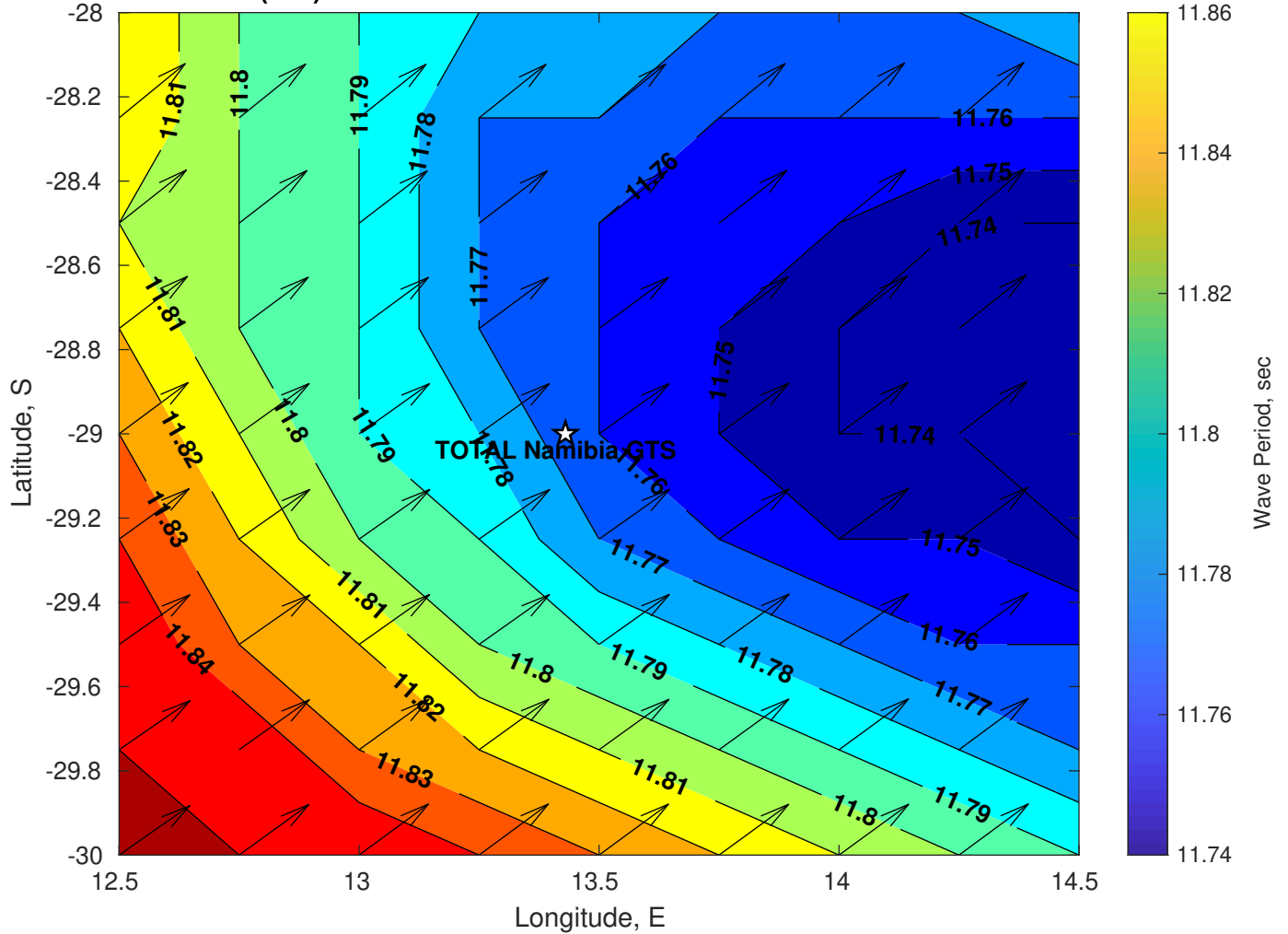
Met Forecast for TOTAL Namibia GTS from 26-Jan-2025 00:00:00 to 02-Feb-2025 00:00:00



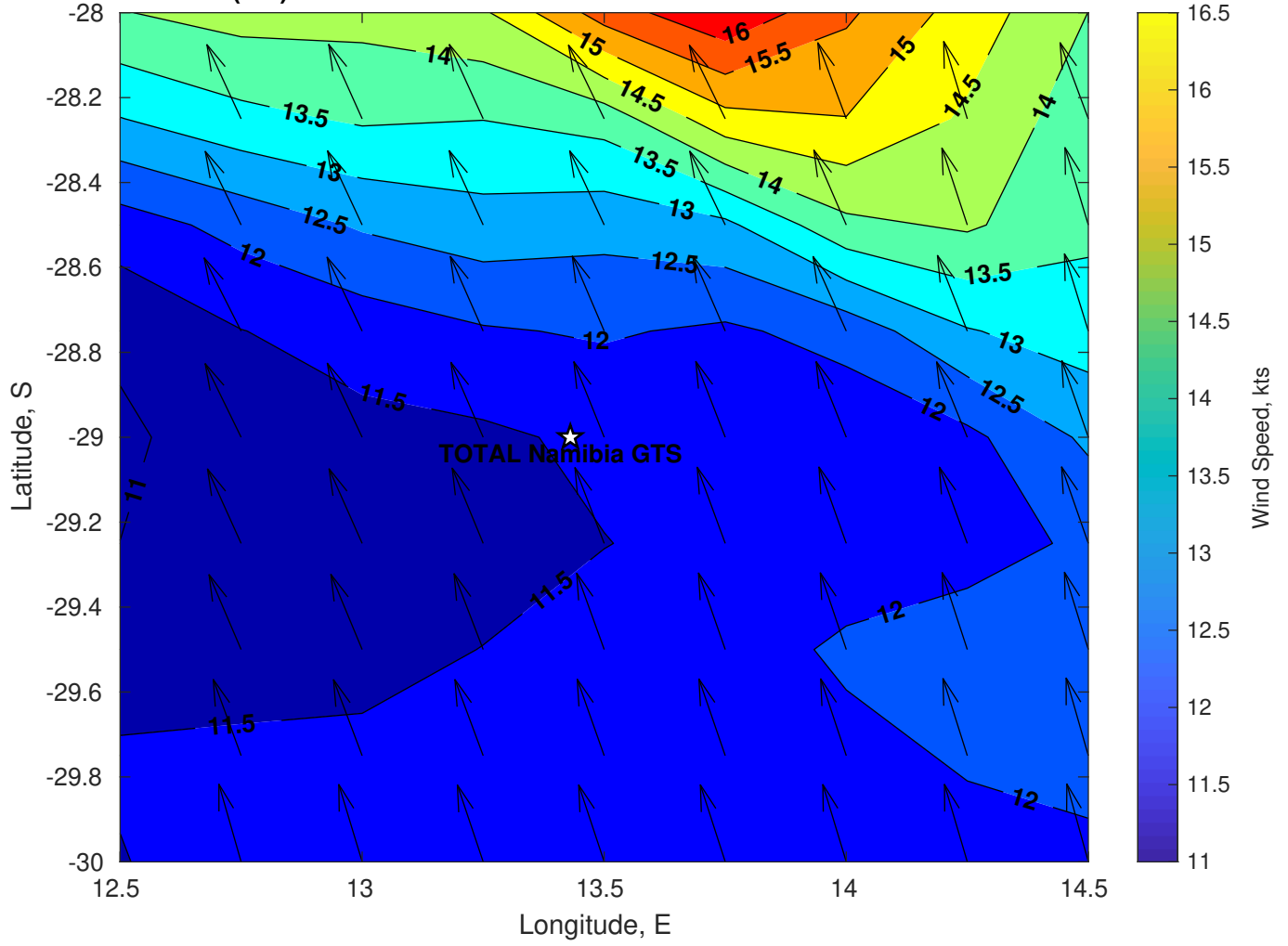
Wave Height (ft) for TOTAL Namibia GTS at 26-Jan-2025 09:00:00



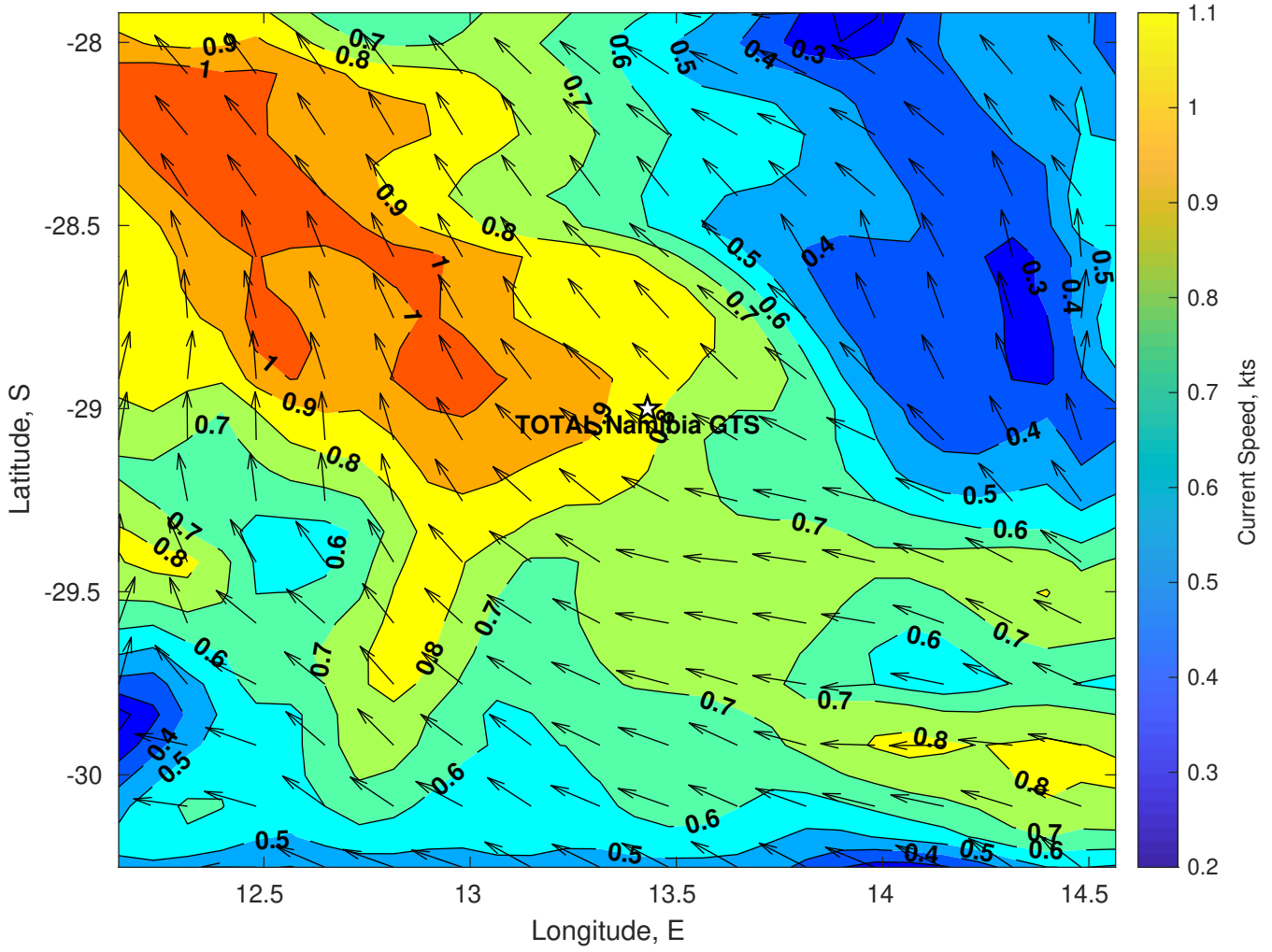
Wave Period (sec) for TOTAL Namibia GTS at 26-Jan-2025 09:00:00



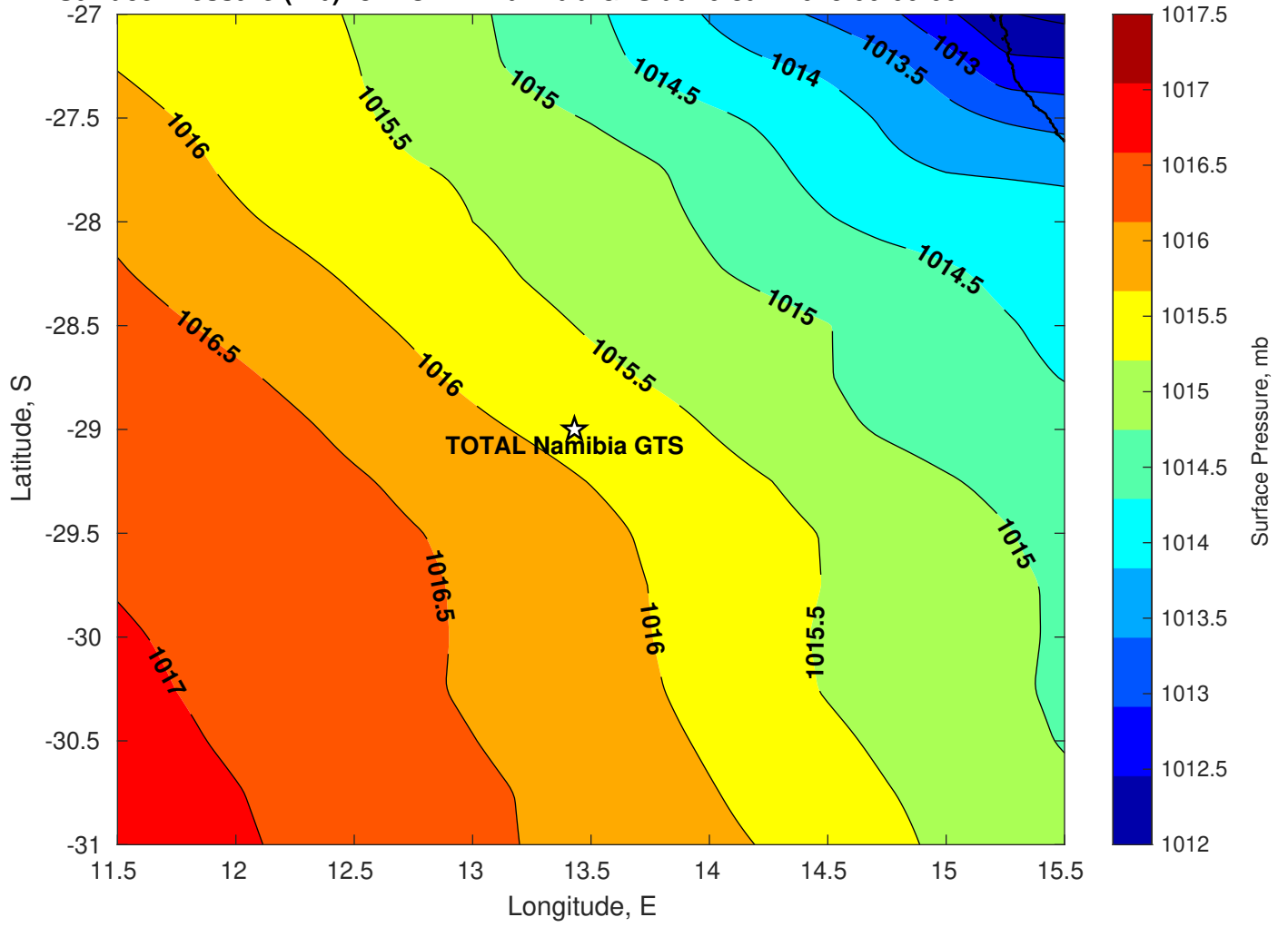
Winds (kts) for TOTAL Namibia GTS at 26-Jan-2025 09:00:00



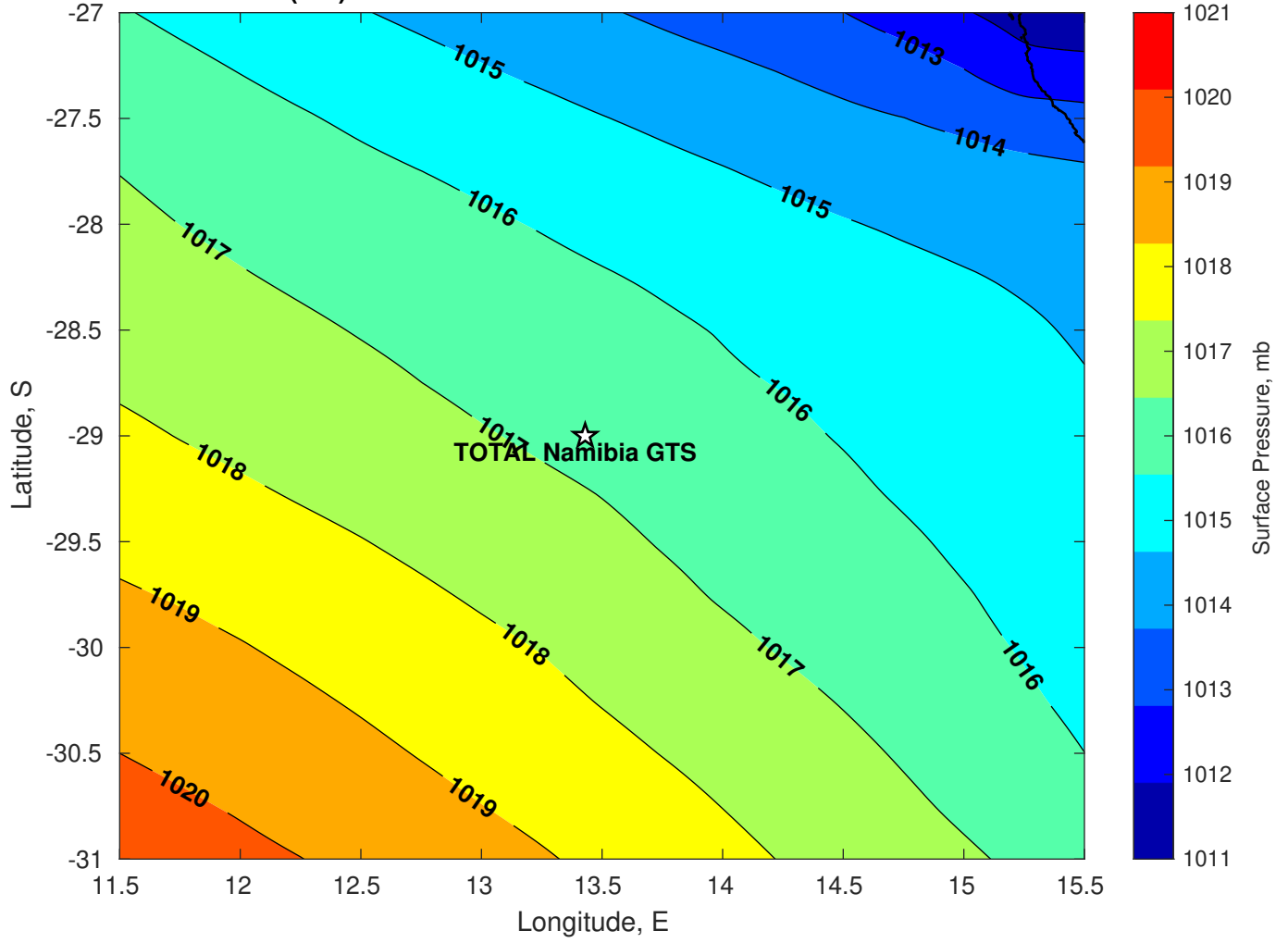
Surface Currents for TOTAL Namibia GTS at 25-Jan-2025 00:00:00



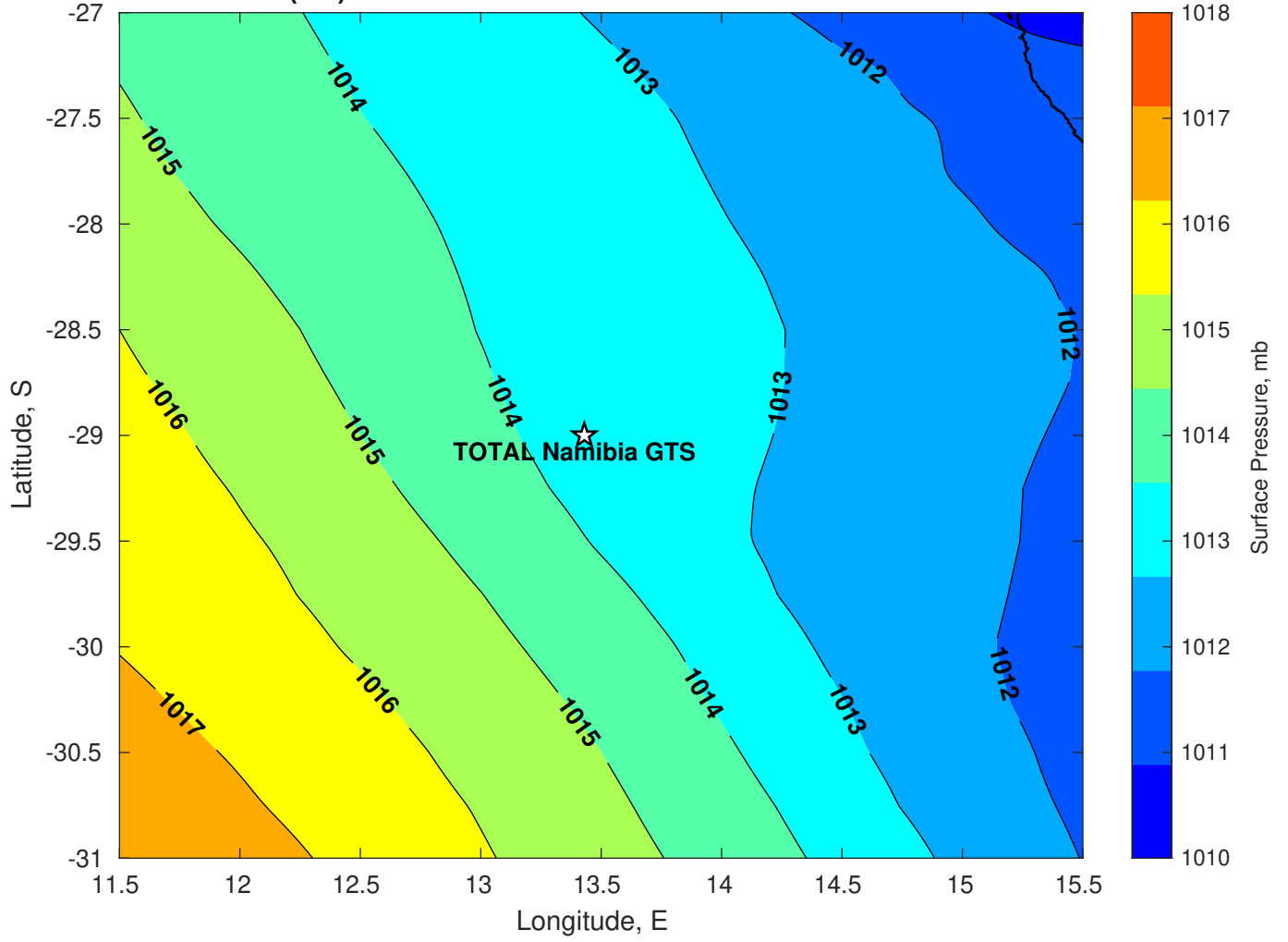
Surface Pressure (mb) for TOTAL Namibia GTS at 26-Jan-2025 00:00:00



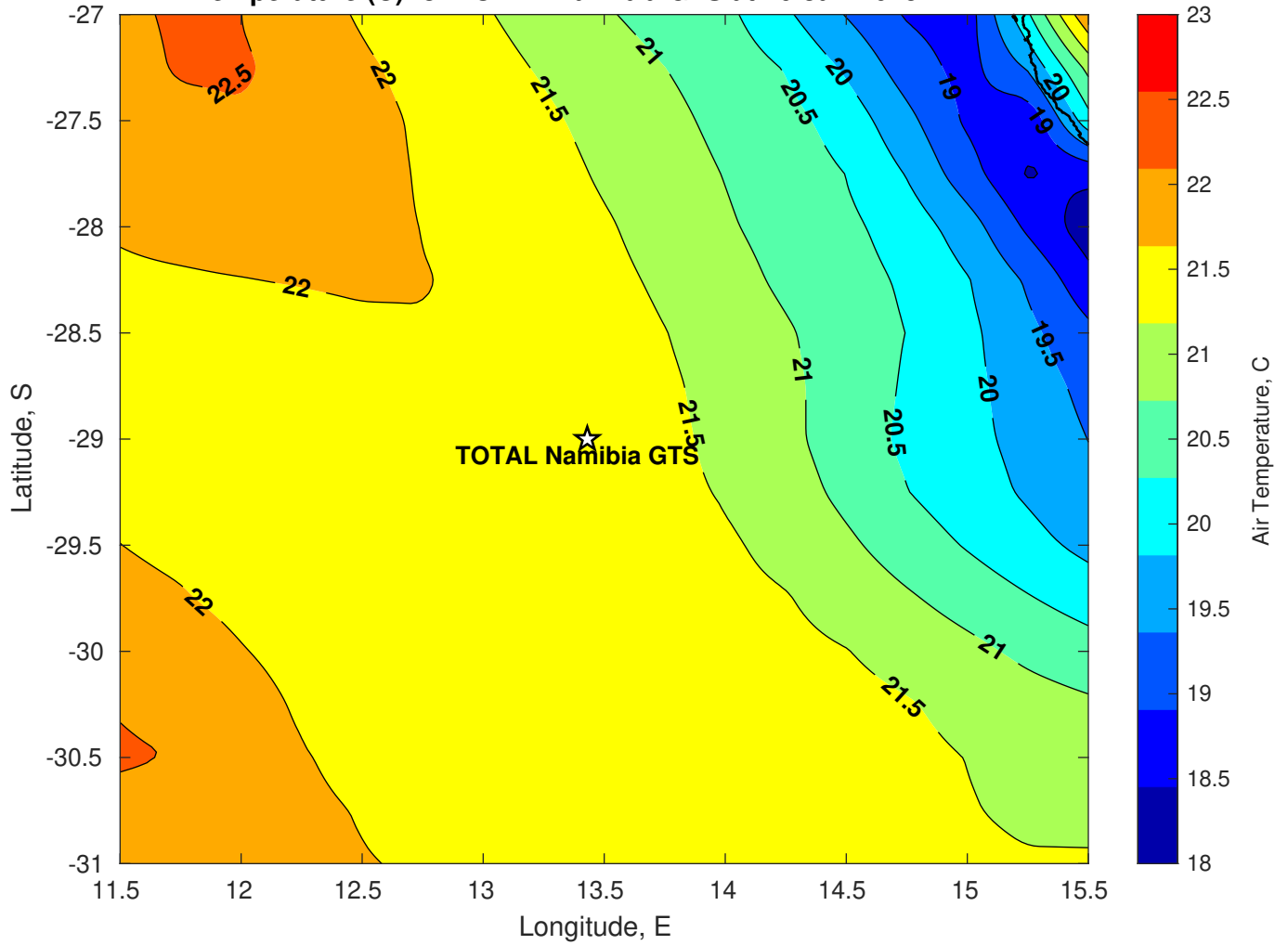
Surface Pressure (mb) for TOTAL Namibia GTS at 27-Jan-2025 00:00:00



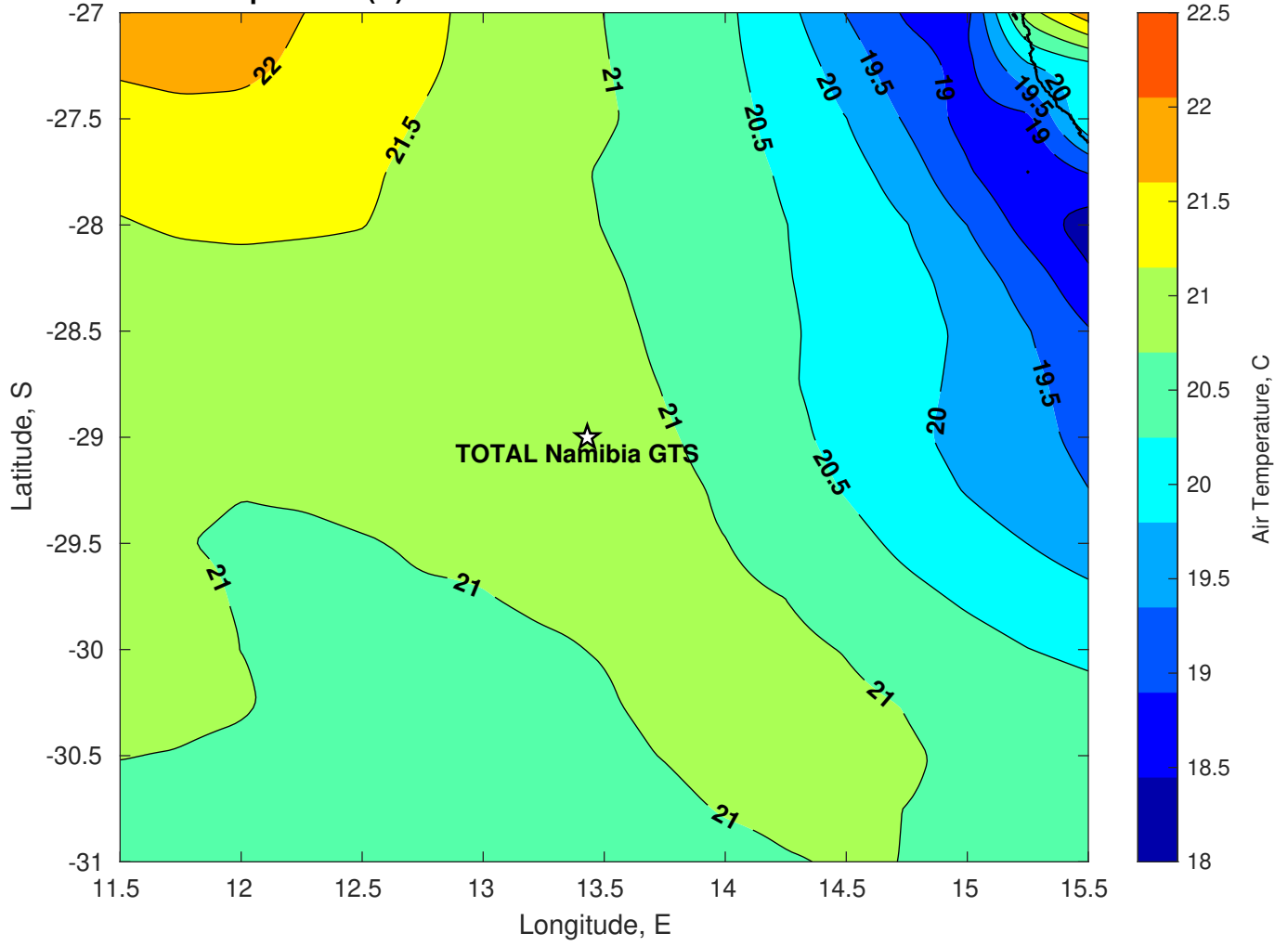
Surface Pressure (mb) for TOTAL Namibia GTS at 28-Jan-2025 00:00:00



Air Temperature (C) for TOTAL Namibia GTS at 26-Jan-2025



Air Temperature (C) for TOTAL Namibia GTS at 26-Jan-2025



Air Temperature (C) for TOTAL Namibia GTS at 26-Jan-2025

