
Marine Weather Forecast for CSL Shell Nigeria
Forecast valid as of 27-Jan-2025 0900 GMT

All times are local.

Today

Winds: NW, 10-15 kts.
Waves: N, 2-3 feet, 14-15 sec.
No currents available.

Tonight

Winds: NW, 10-15 kts.
Waves: N, 2-3 feet, 14-15 sec.
No currents available.

Tuesday

Winds: N, 10-15 kts.
Waves: N, 2-3 feet, 14-15 sec.
No currents available.

Tuesday Night

Winds: NW, 10-15 kts.
Waves: N, 2-3 feet, 13-14 sec.
No currents available.

Wednesday

Winds: NW, 10-15 kts.
Waves: N, 2-3 feet, 12-13 sec.
No currents available.

Wednesday Night

Winds: NW, 10-15 kts.
Waves: N, 2-3 feet, 12-13 sec.
No currents available.

Thursday

Winds: NW, 10-15 kts.
Waves: N, 2-3 feet, 11-12 sec.
No currents available.

Thursday Night

Winds: NW, 10-15 kts.
Waves: N, 2-3 feet, 11-12 sec.
No currents available.

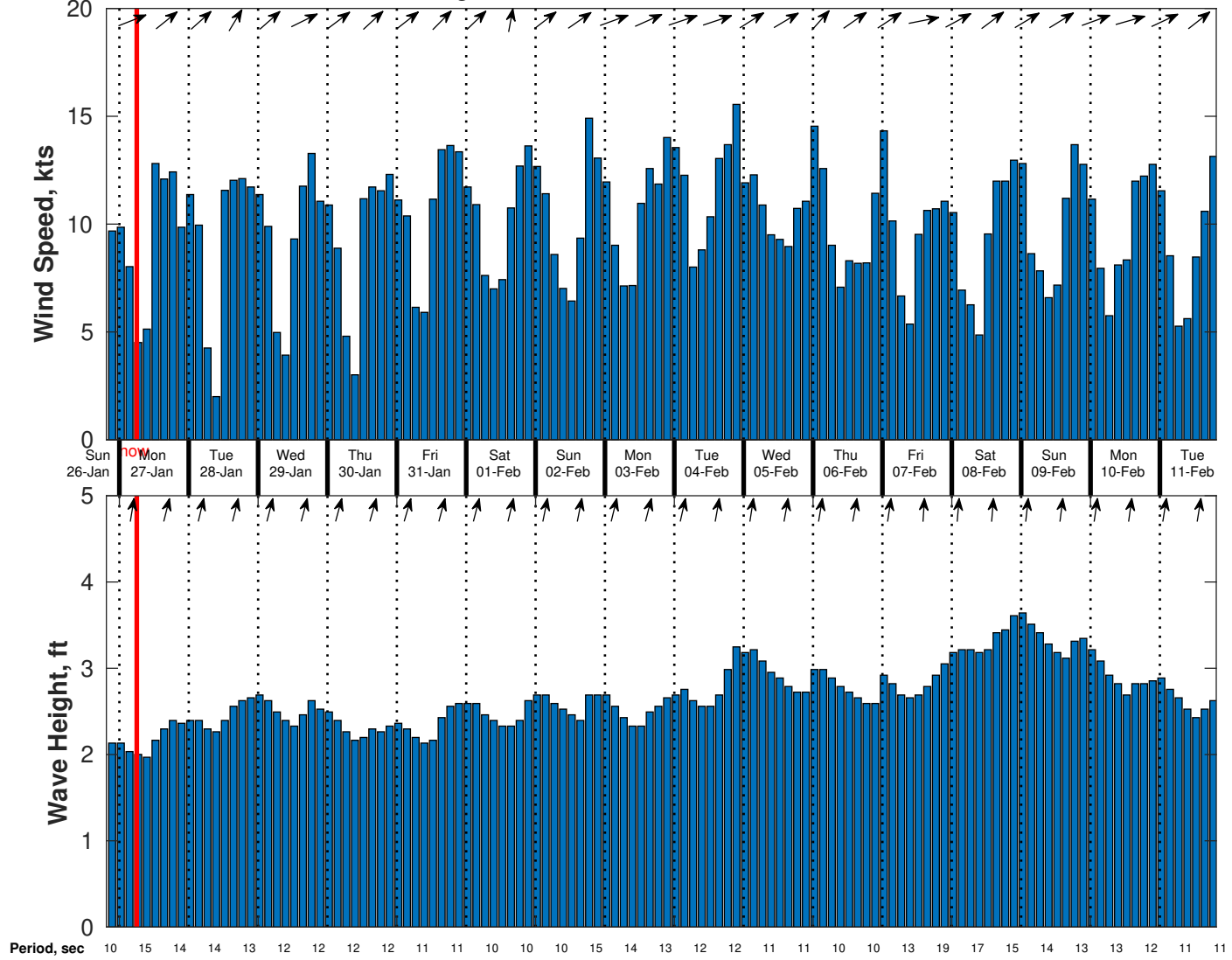
Friday

Winds: NW, 10-15 kts.
Waves: N, 2-3 feet, 11-12 sec.
No currents available.

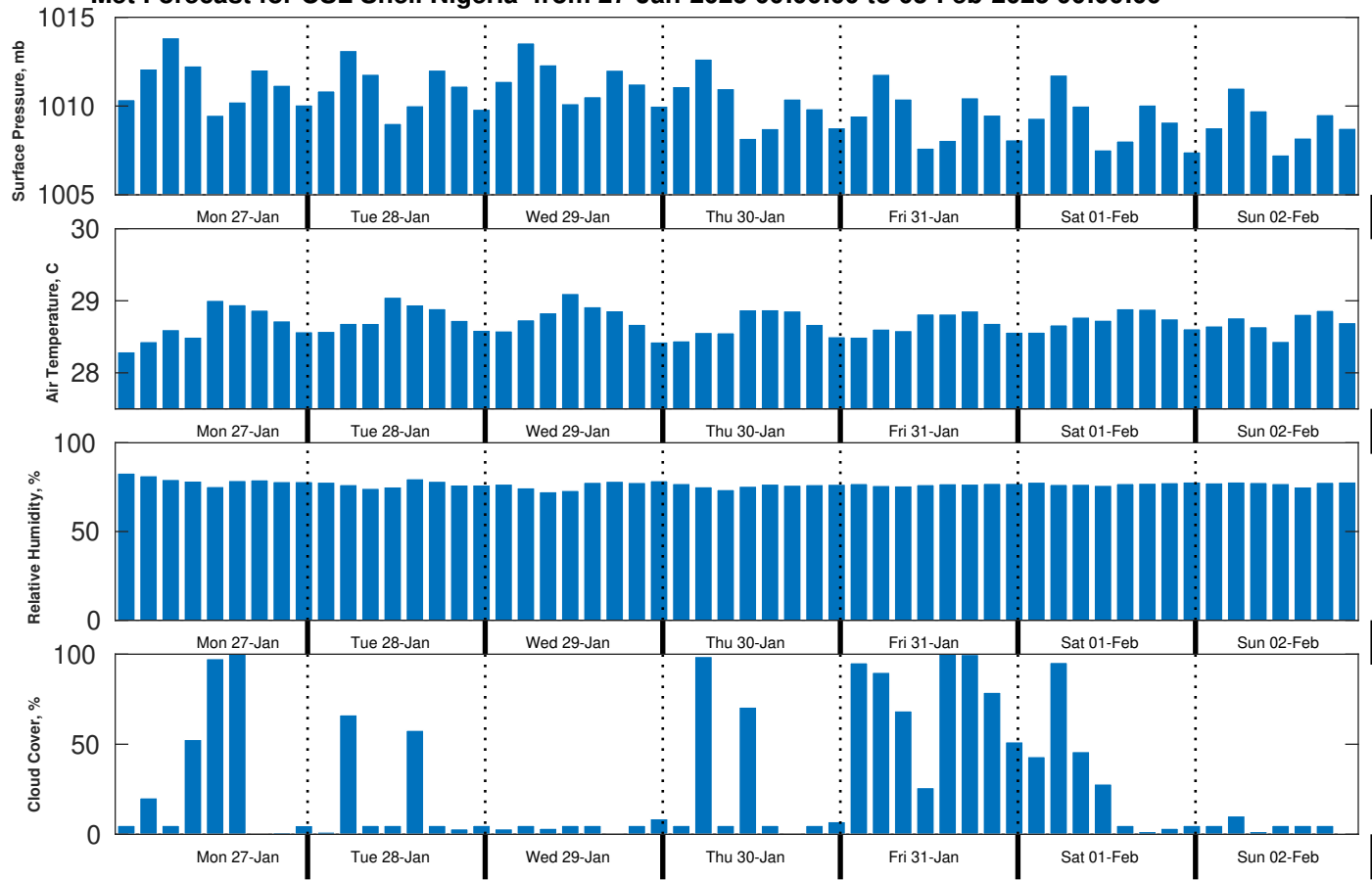
Friday Night

Winds: NW, 10-15 kts.
Waves: N, 2-3 feet, 10-11 sec.
No currents available.

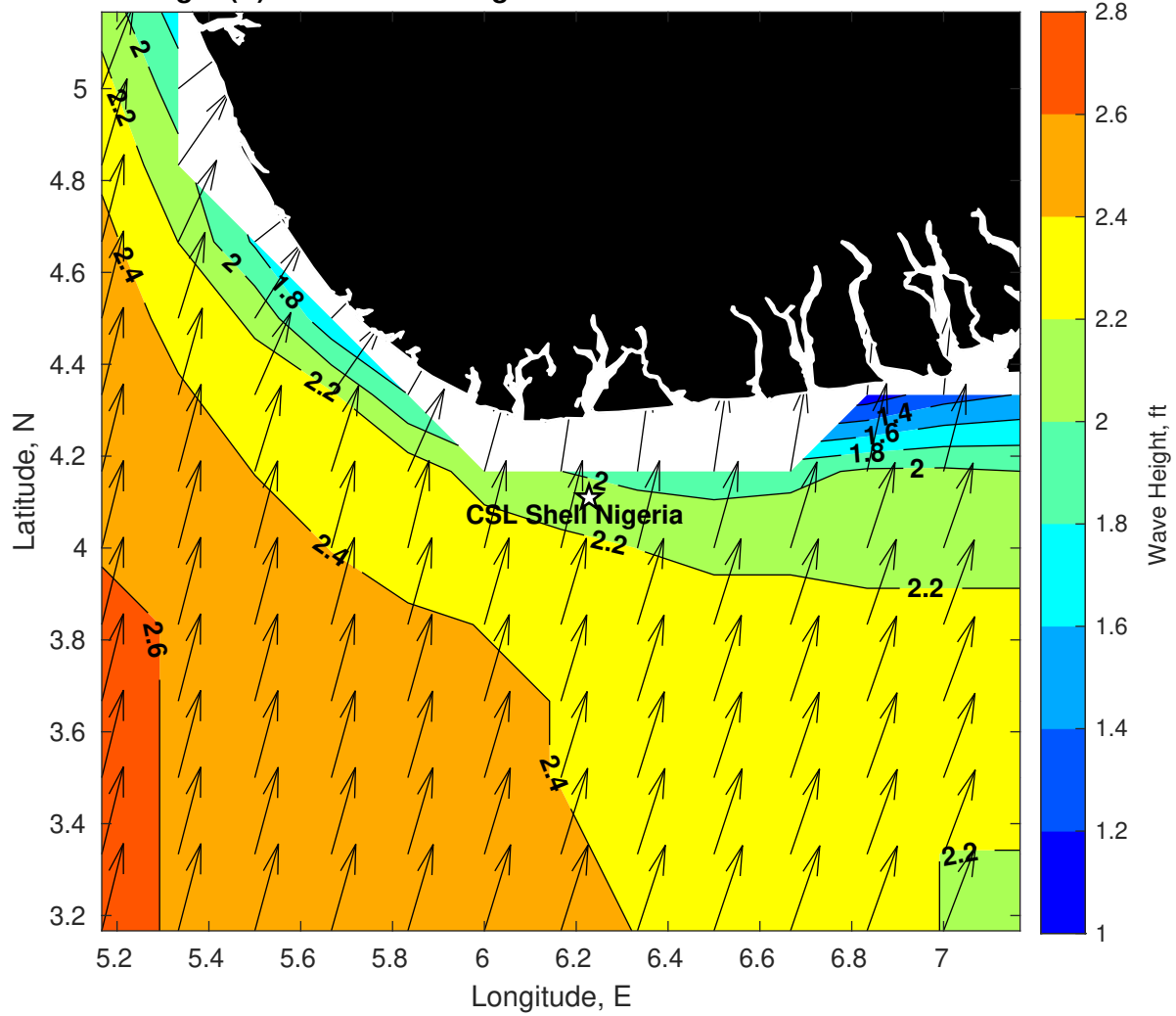
Wind & Wave Forecast for CSL Shell Nigeria from 26-Jan-2025 20:00:00 to 11-Feb-2025 20:00:00



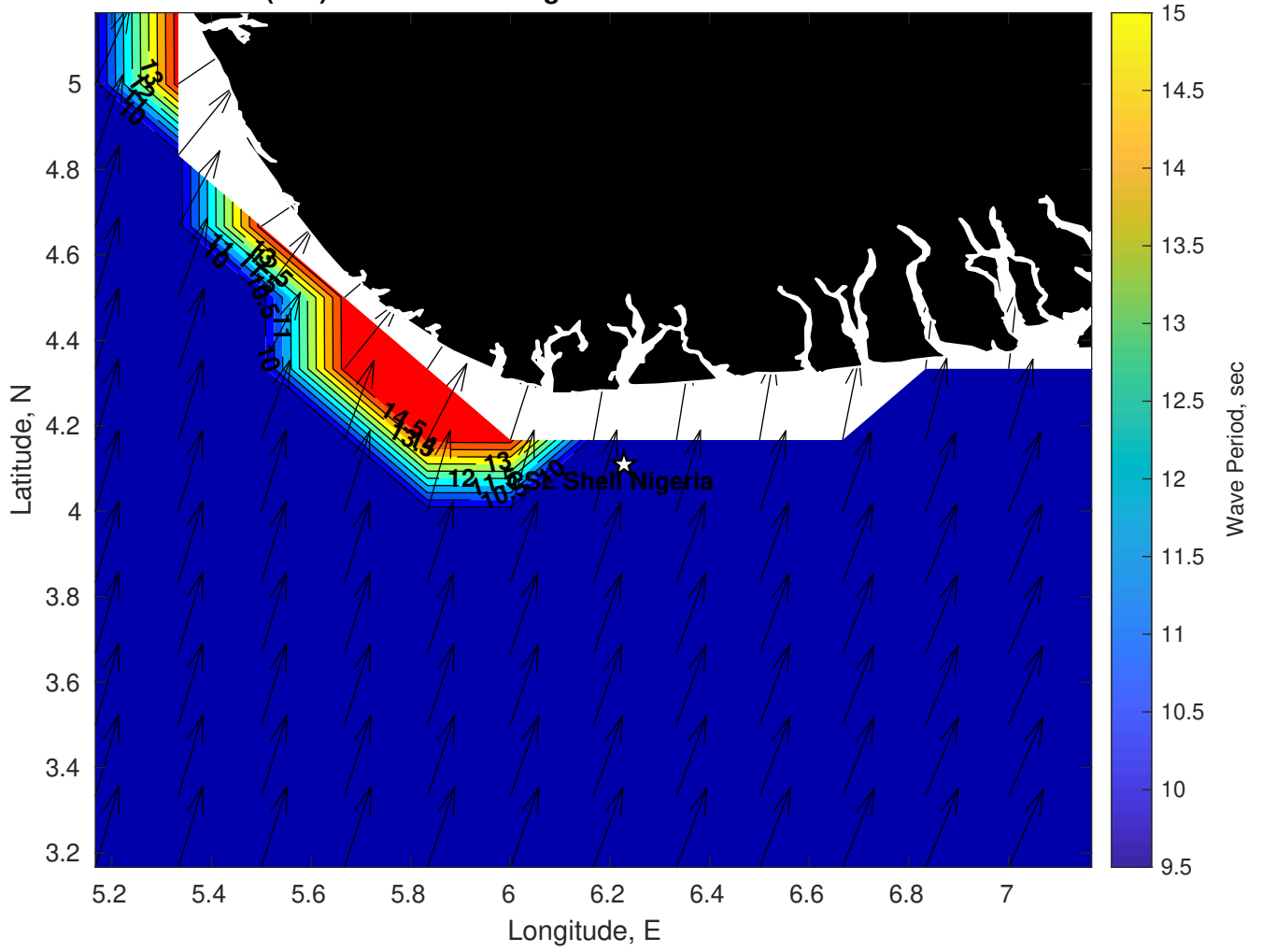
Met Forecast for CSL Shell Nigeria from 27-Jan-2025 00:00:00 to 03-Feb-2025 00:00:00



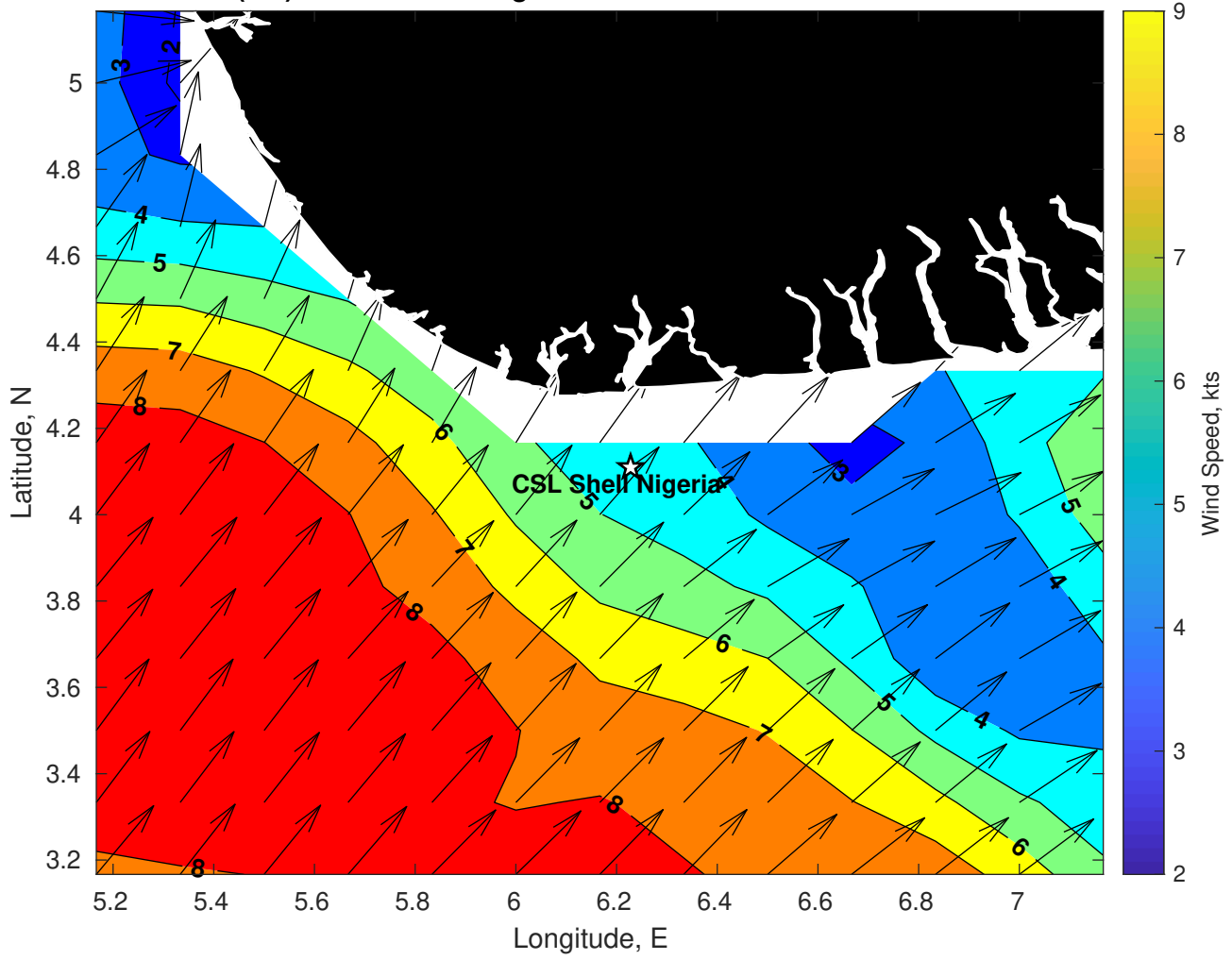
Wave Height (ft) for CSL Shell Nigeria at 27-Jan-2025 09:00:00



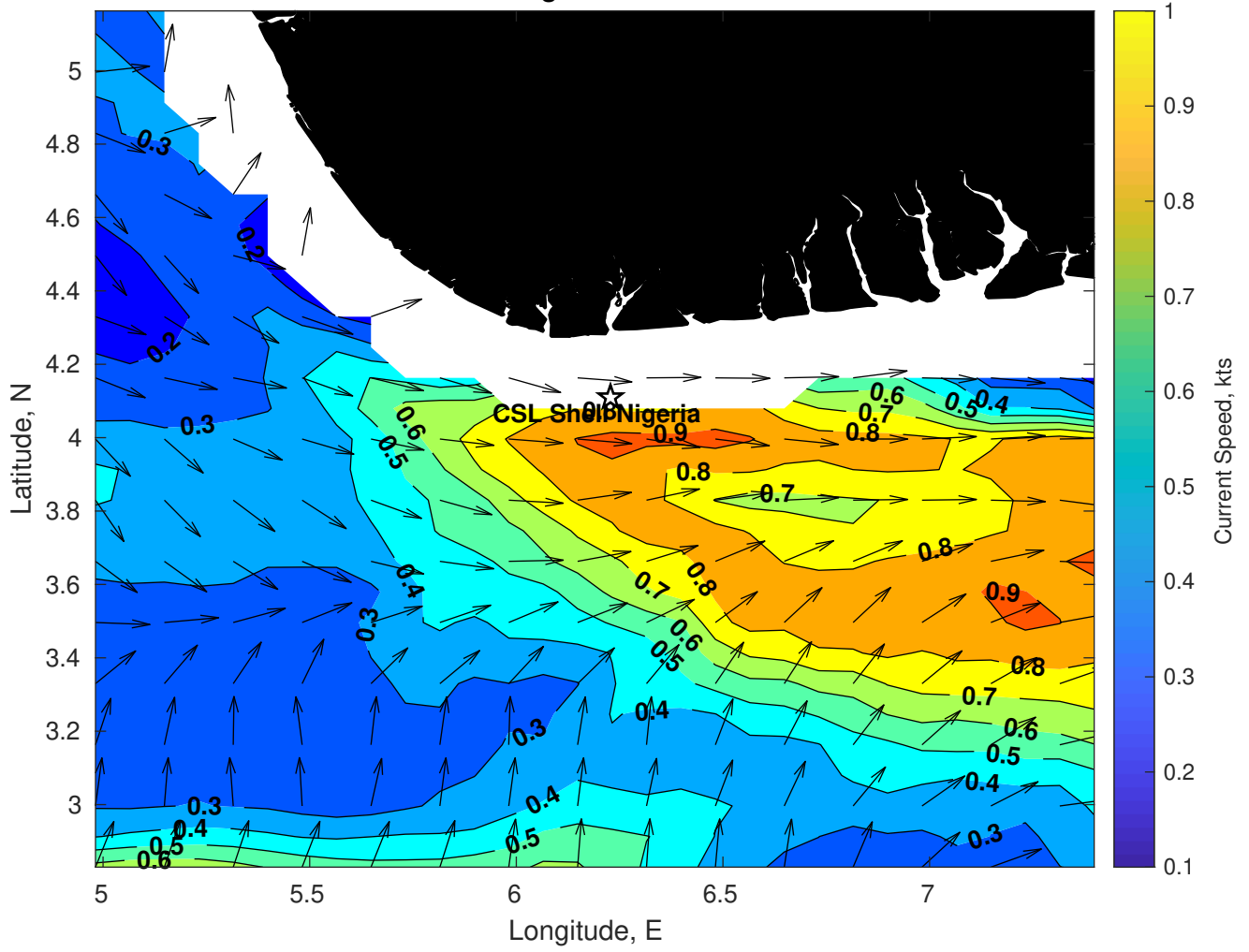
Wave Period (sec) for CSL Shell Nigeria at 27-Jan-2025 09:00:00



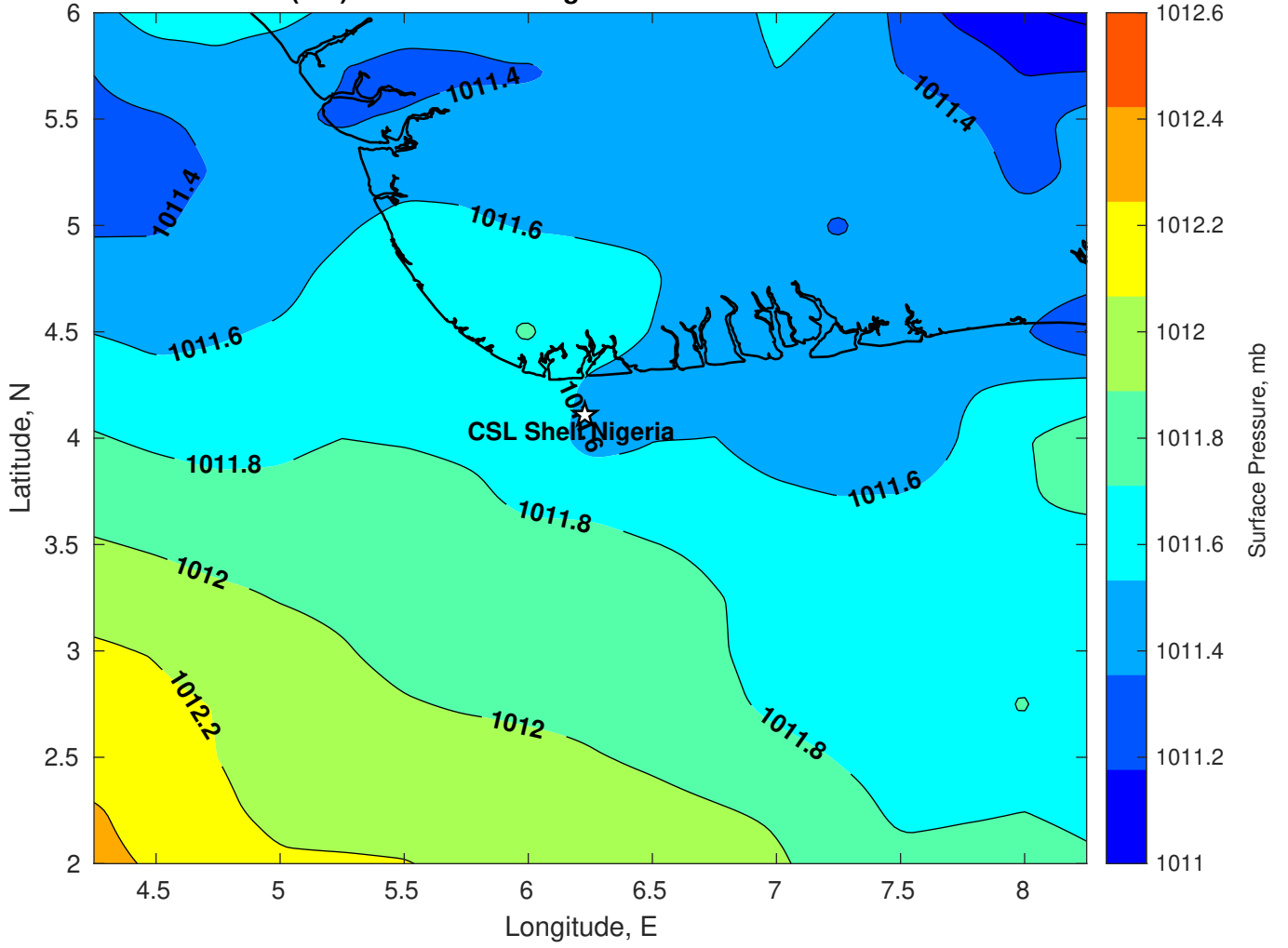
Winds (kts) for CSL Shell Nigeria at 27-Jan-2025 09:00:00



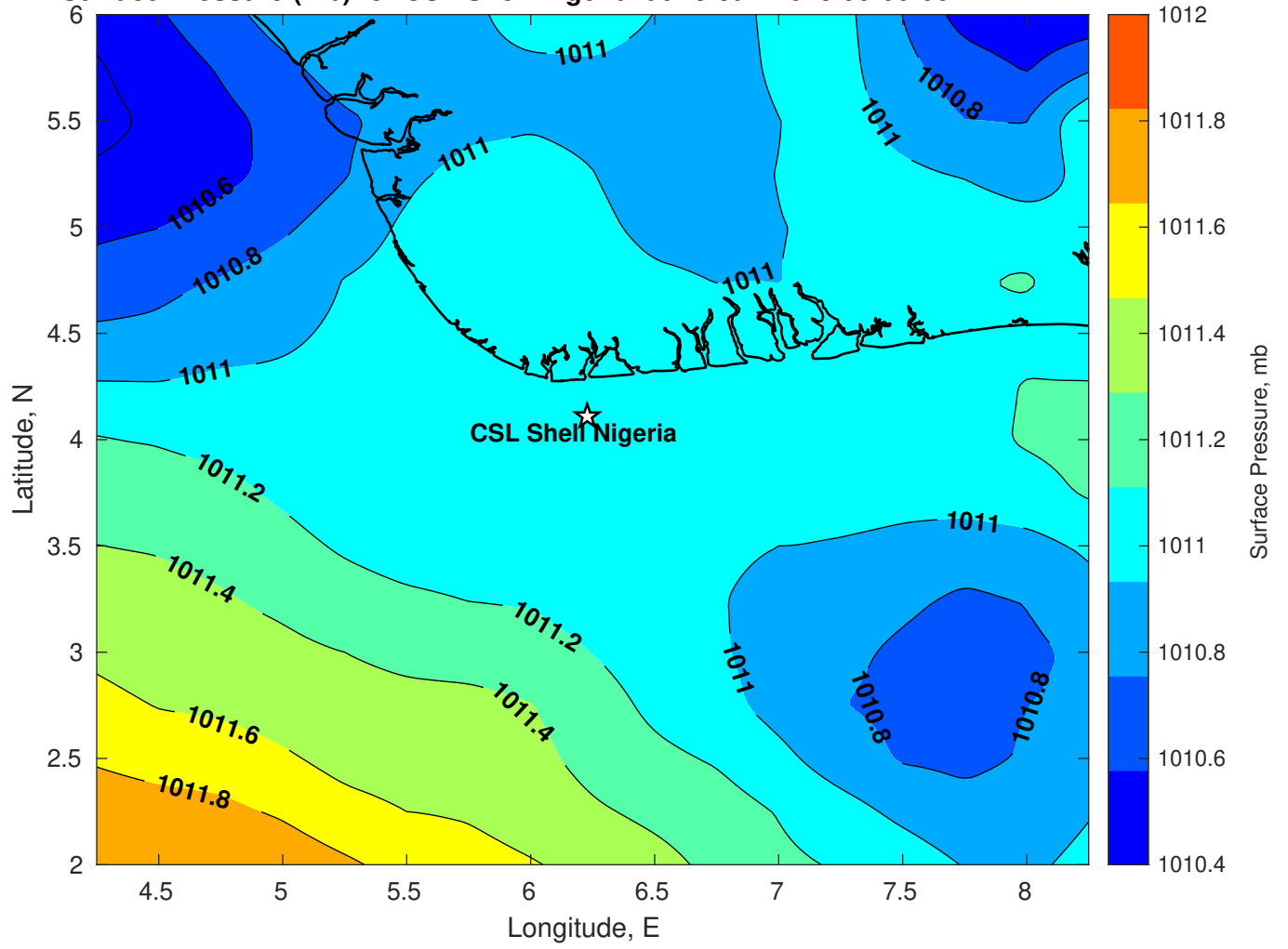
Surface Currents for CSL Shell Nigeria at 26-Jan-2025 00:00:00



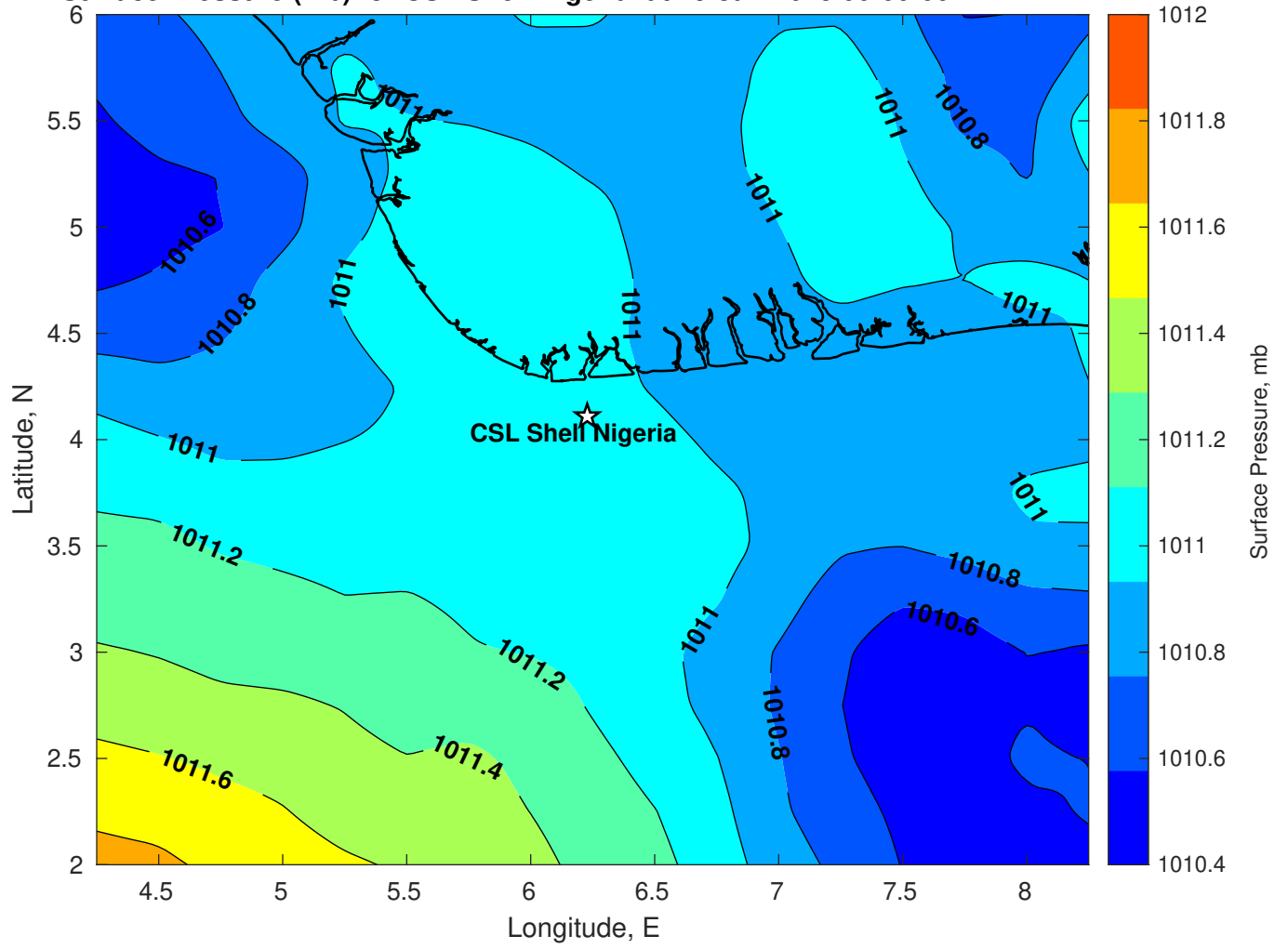
Surface Pressure (mb) for CSL Shell Nigeria at 27-Jan-2025 00:00:00



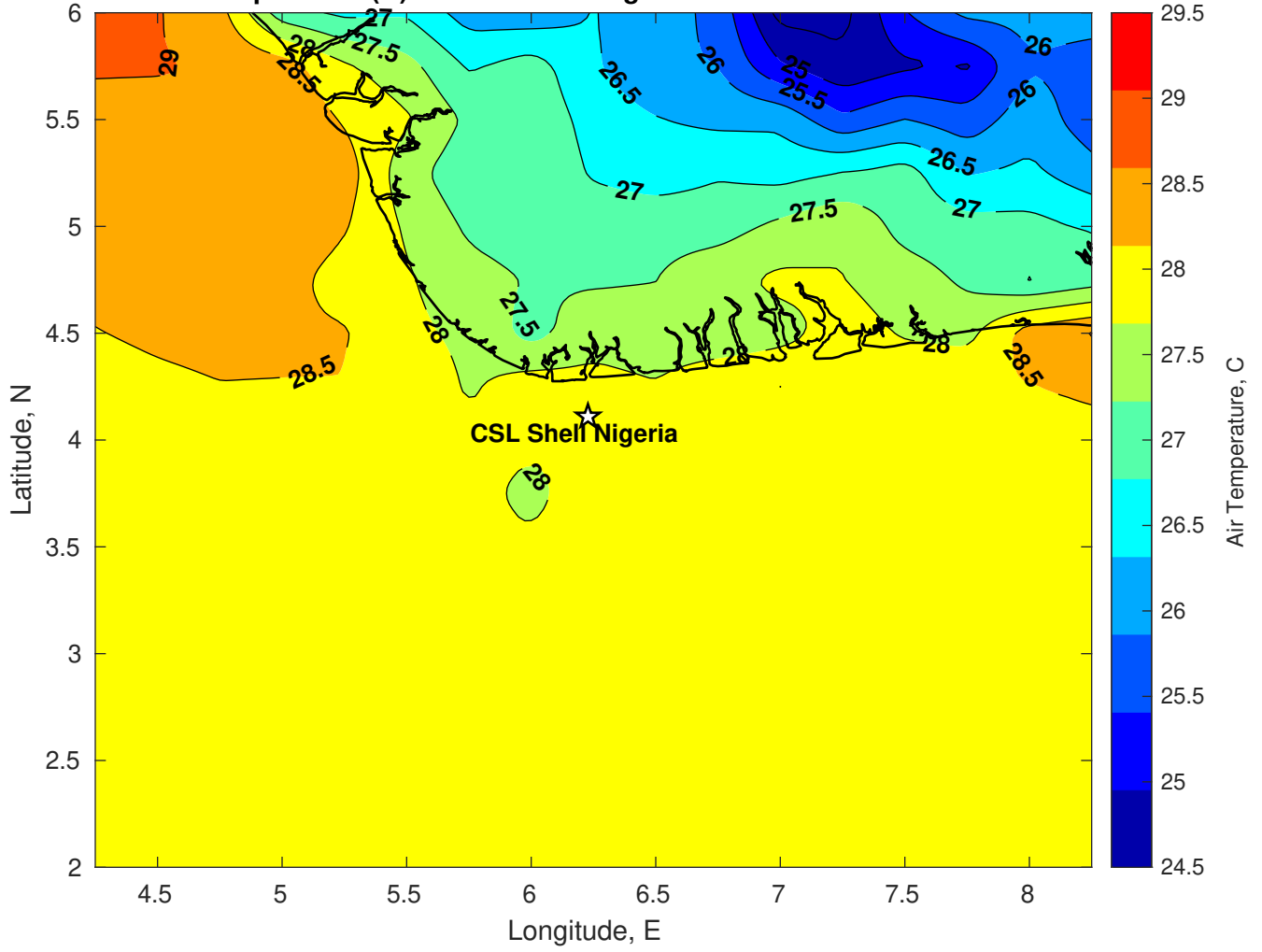
Surface Pressure (mb) for CSL Shell Nigeria at 28-Jan-2025 00:00:00



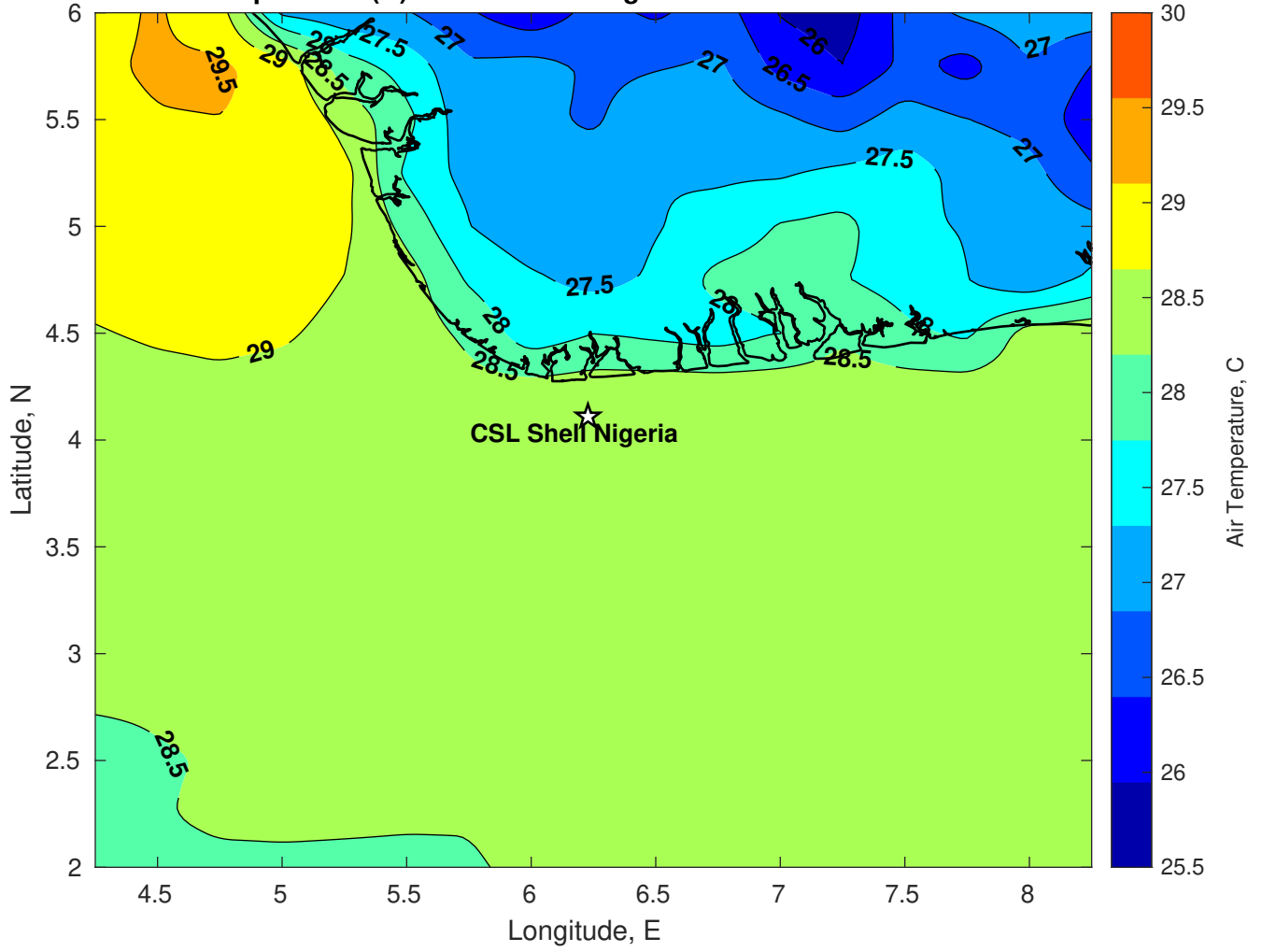
Surface Pressure (mb) for CSL Shell Nigeria at 29-Jan-2025 00:00:00



Air Temperature (C) for CSL Shell Nigeria at 27-Jan-2025



Air Temperature (C) for CSL Shell Nigeria at 27-Jan-2025



Air Temperature (C) for CSL Shell Nigeria at 27-Jan-2025

