

\*\*\*\*\*

Marine Weather Forecast for CSL Shell Nigeria  
Forecast valid as of 28-Jan-2025 0900 GMT

\*\*\*\*\*

All times are local.

Today

Winds: NW, 10-15 kts.  
Waves: N, 2-3 feet, 13-14 sec.  
No currents available.

Tonight

Winds: NW, 10-15 kts.  
Waves: N, 2-3 feet, 13-14 sec.  
No currents available.

Wednesday

Winds: NW, 10-15 kts.  
Waves: N, 2-3 feet, 12-13 sec.  
No currents available.

Wednesday Night

Winds: NW, 10-15 kts.  
Waves: N, 2-3 feet, 12-13 sec.  
No currents available.

Thursday

Winds: NW, 10-15 kts.  
Waves: N, 2-3 feet, 11-12 sec.  
No currents available.

Thursday Night

Winds: NW, 10-15 kts.  
Waves: N, 2-3 feet, 11-12 sec.  
No currents available.

Friday

Winds: NW, 10-15 kts.  
Waves: N, 2-3 feet, 11-12 sec.  
No currents available.

Friday Night

Winds: NW, 10-15 kts.  
Waves: N, 2-3 feet, 11-12 sec.  
No currents available.

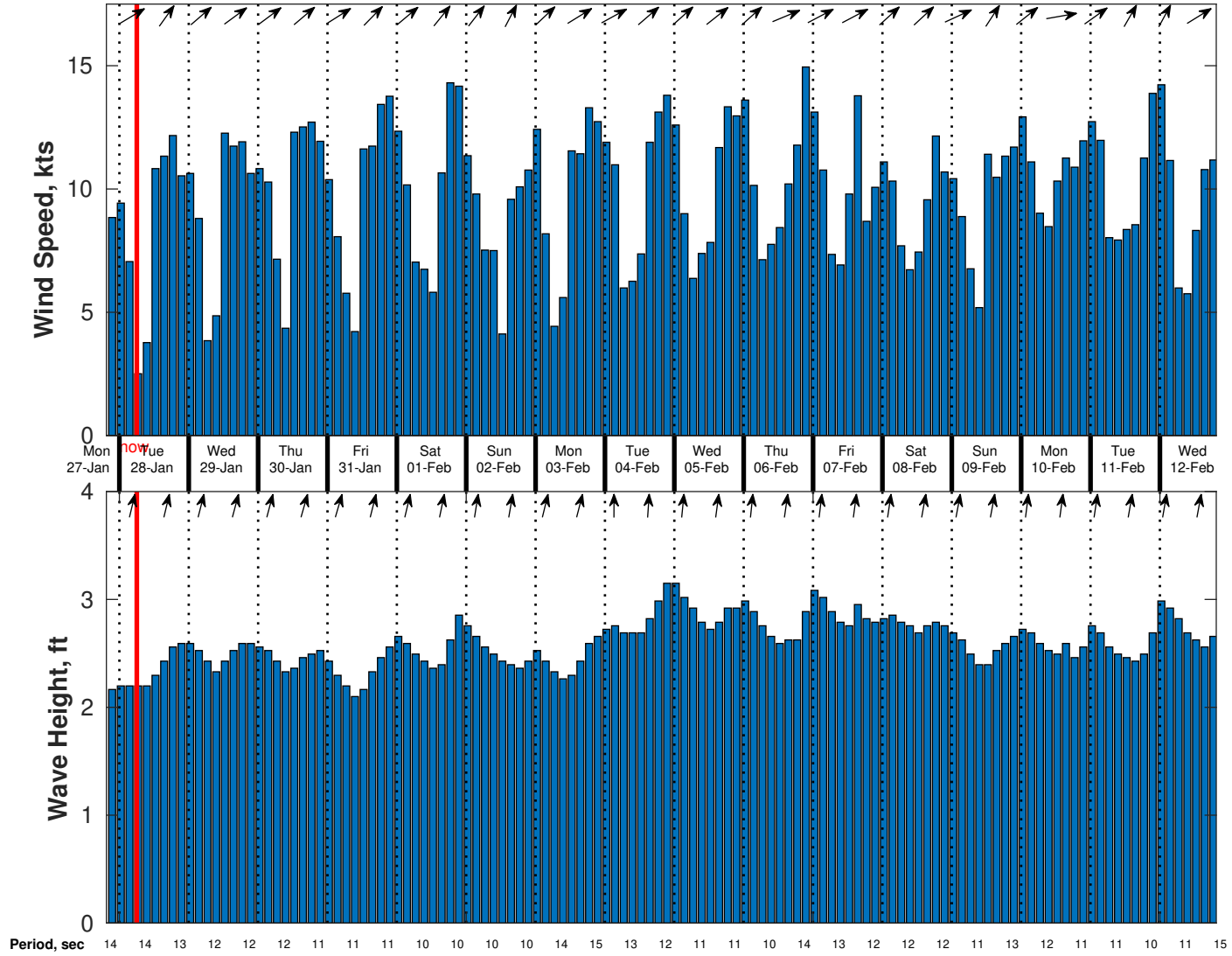
Saturday

Winds: N, 10-15 kts.  
Waves: N, 2-3 feet, 10-11 sec.  
No currents available.

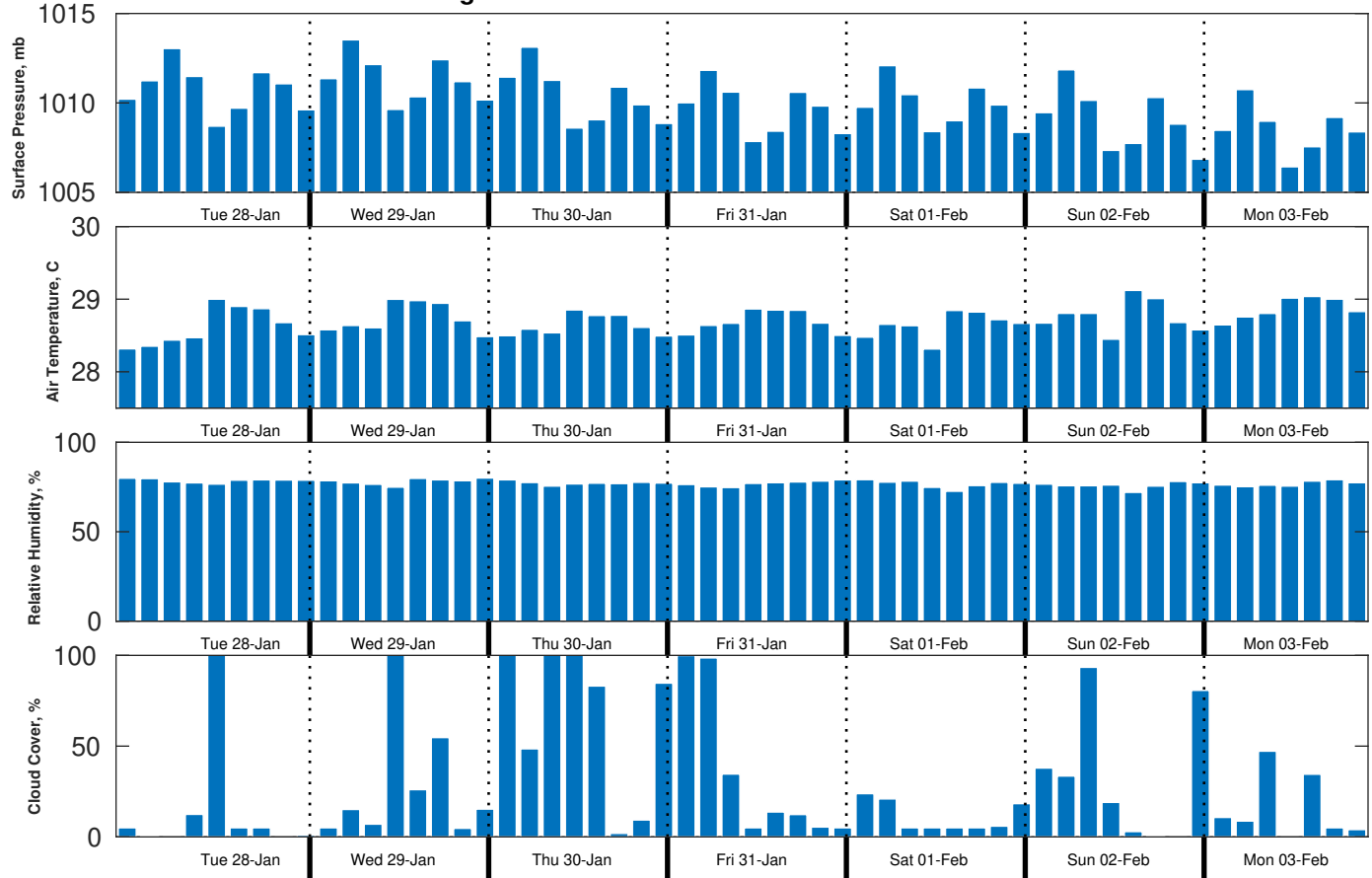
Saturday Night

Winds: NW, 10-15 kts.  
Waves: N, 2-3 feet, 10-11 sec.  
No currents available.

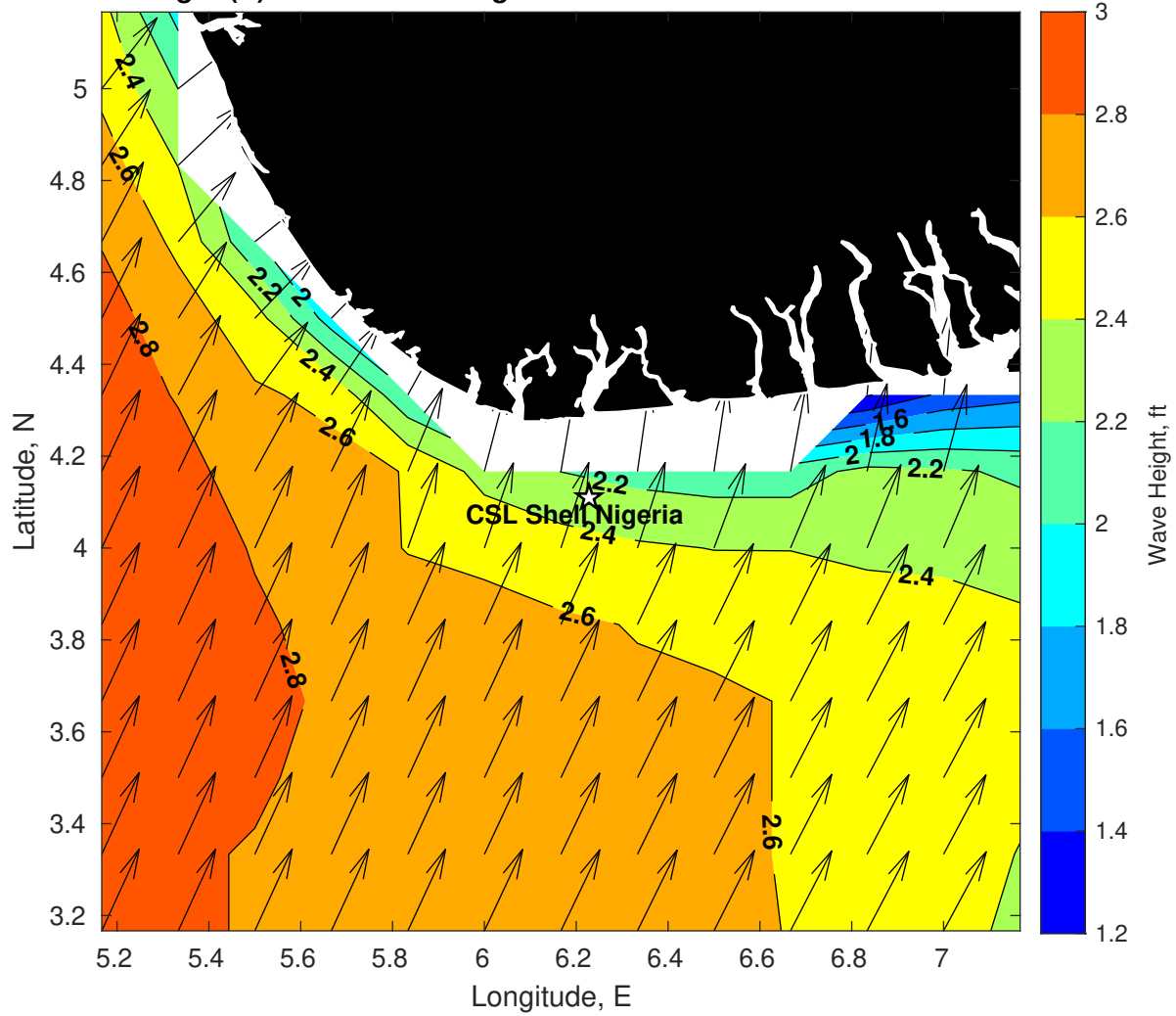
Wind & Wave Forecast for CSL Shell Nigeria from 27-Jan-2025 20:00:00 to 12-Feb-2025 20:00:00



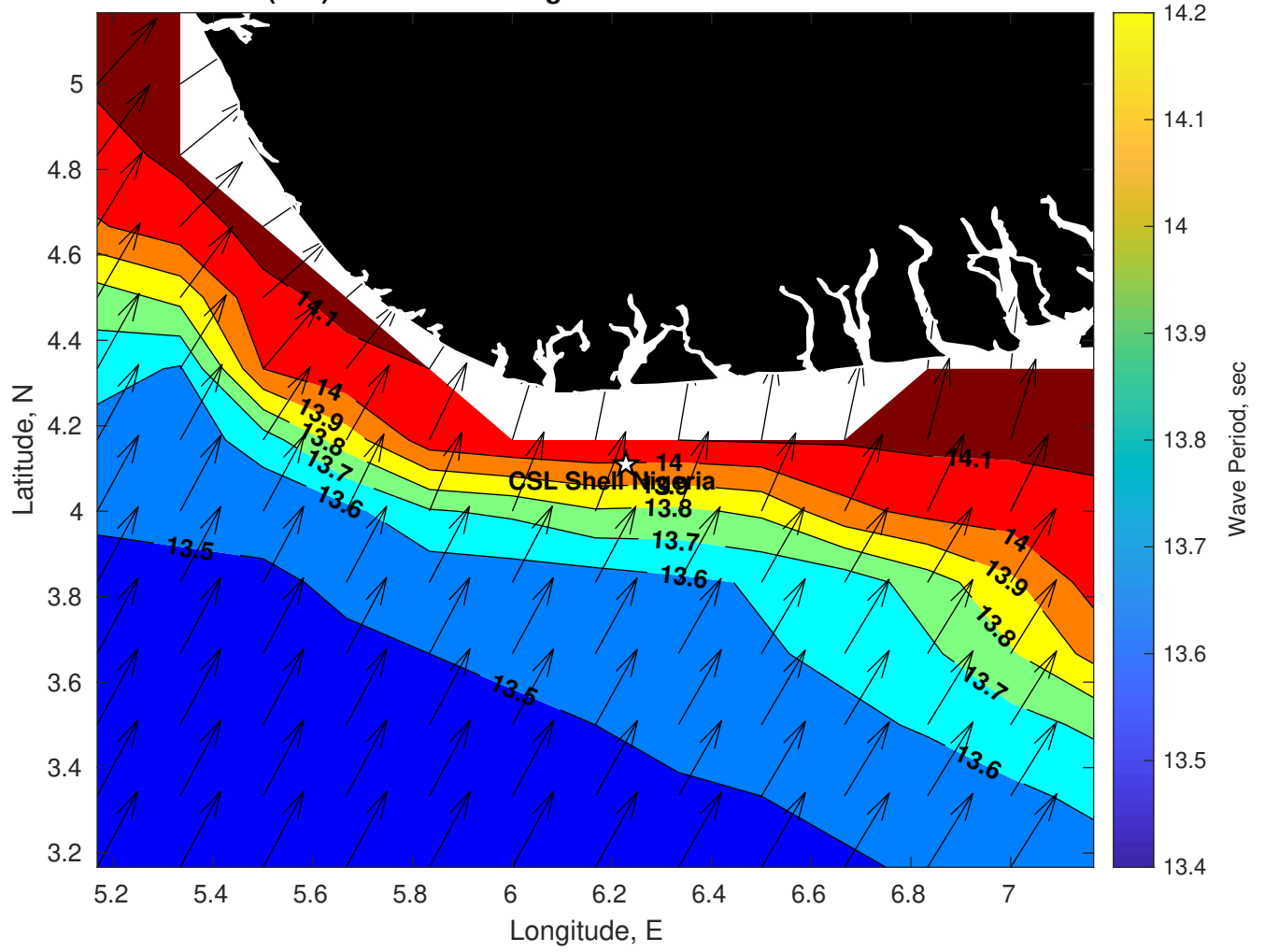
**Met Forecast for CSL Shell Nigeria from 28-Jan-2025 00:00:00 to 04-Feb-2025 00:00:00**



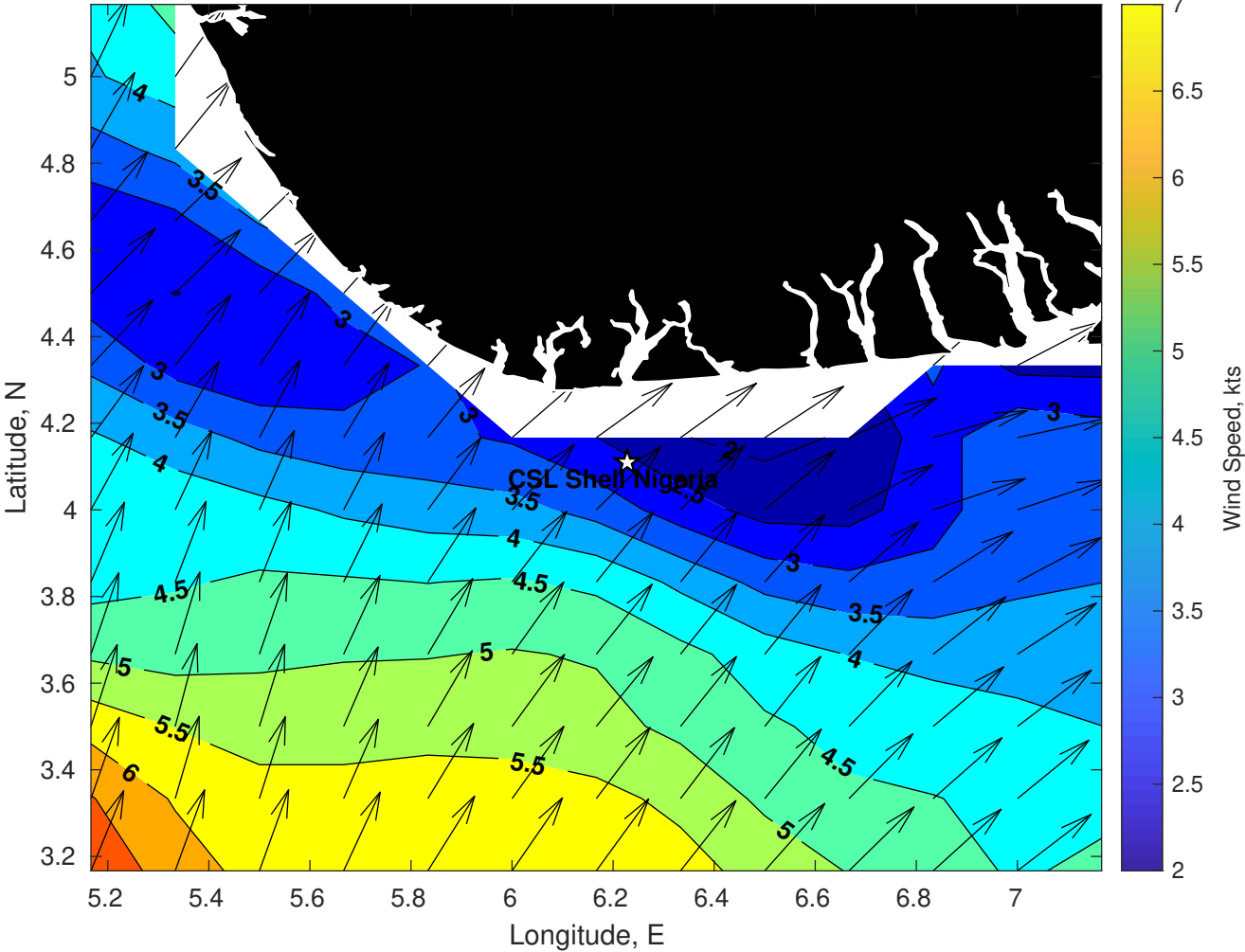
Wave Height (ft) for CSL Shell Nigeria at 28-Jan-2025 09:00:00



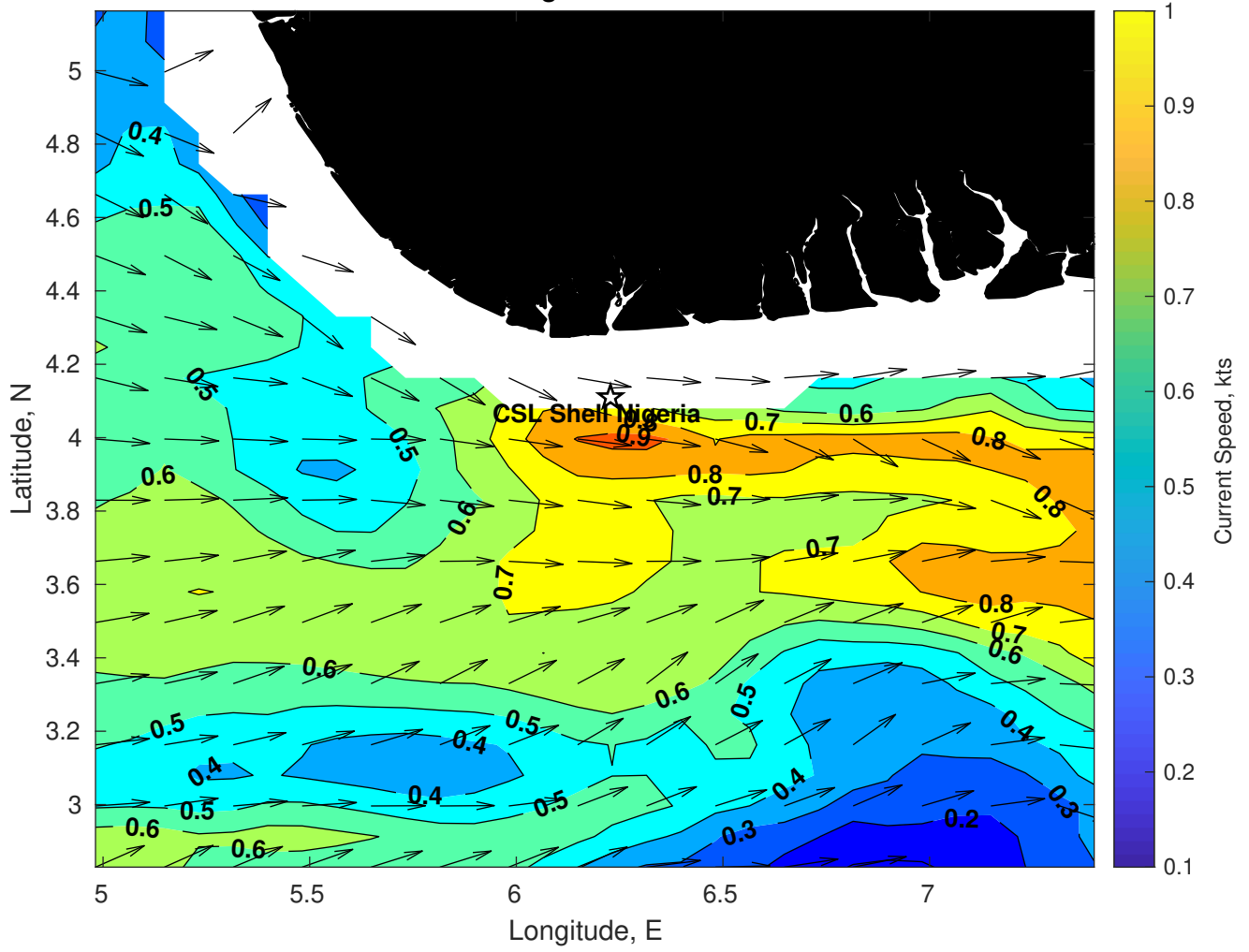
Wave Period (sec) for CSL Shell Nigeria at 28-Jan-2025 09:00:00



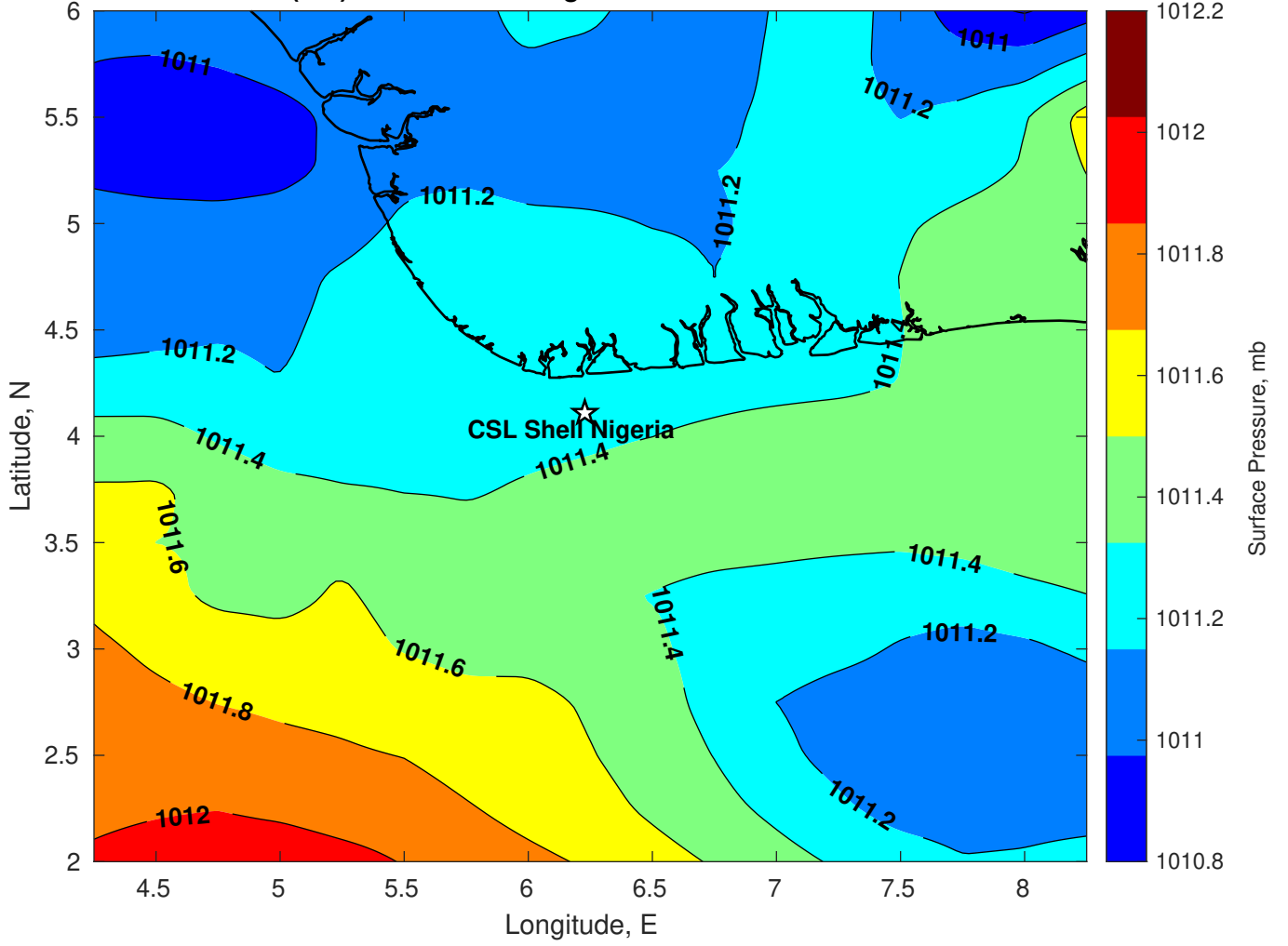
Winds (kts) for CSL Shell Nigeria at 28-Jan-2025 09:00:00



Surface Currents for CSL Shell Nigeria at 27-Jan-2025 00:00:00

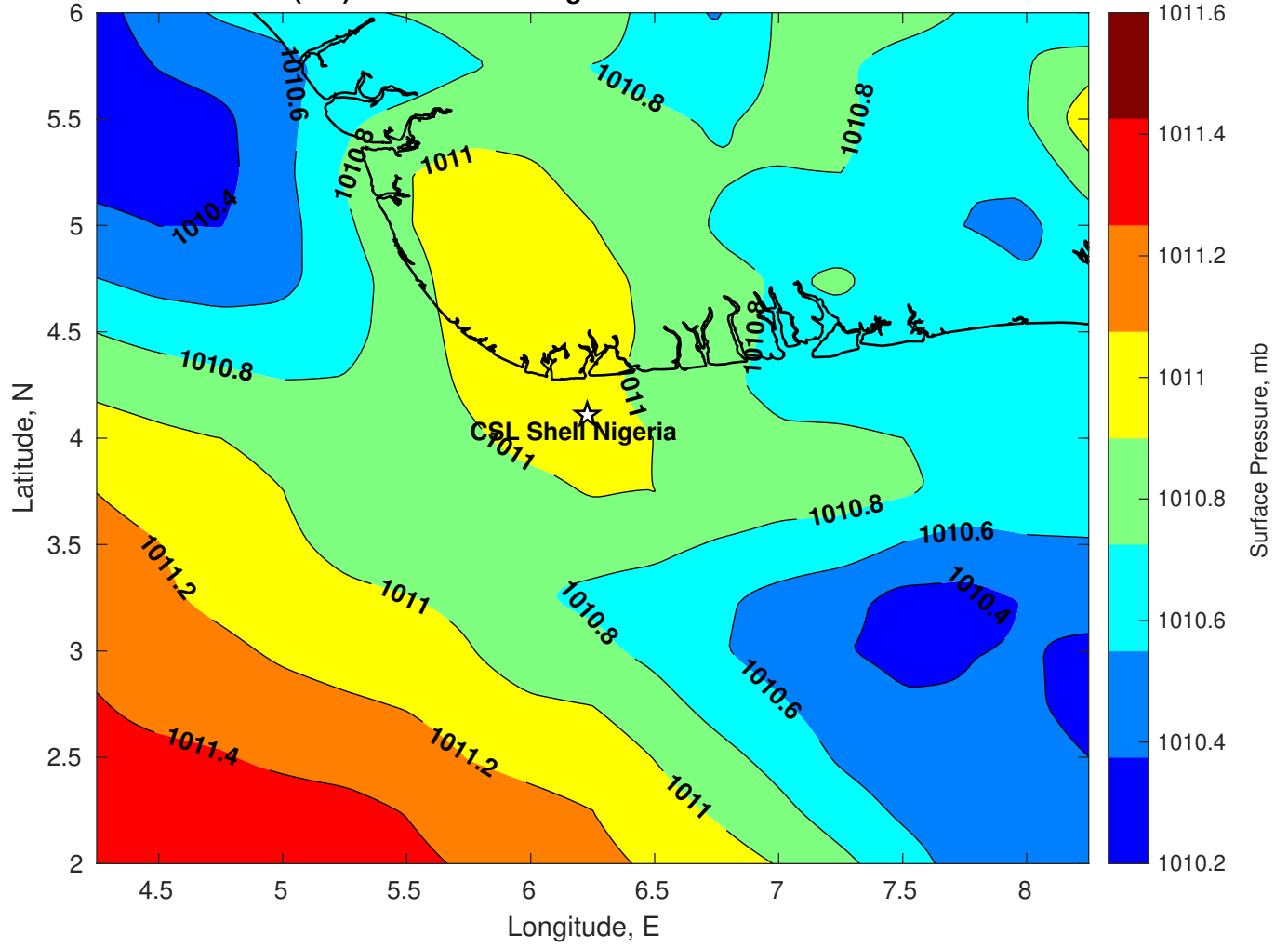


Surface Pressure (mb) for CSL Shell Nigeria at 28-Jan-2025 00:00:00

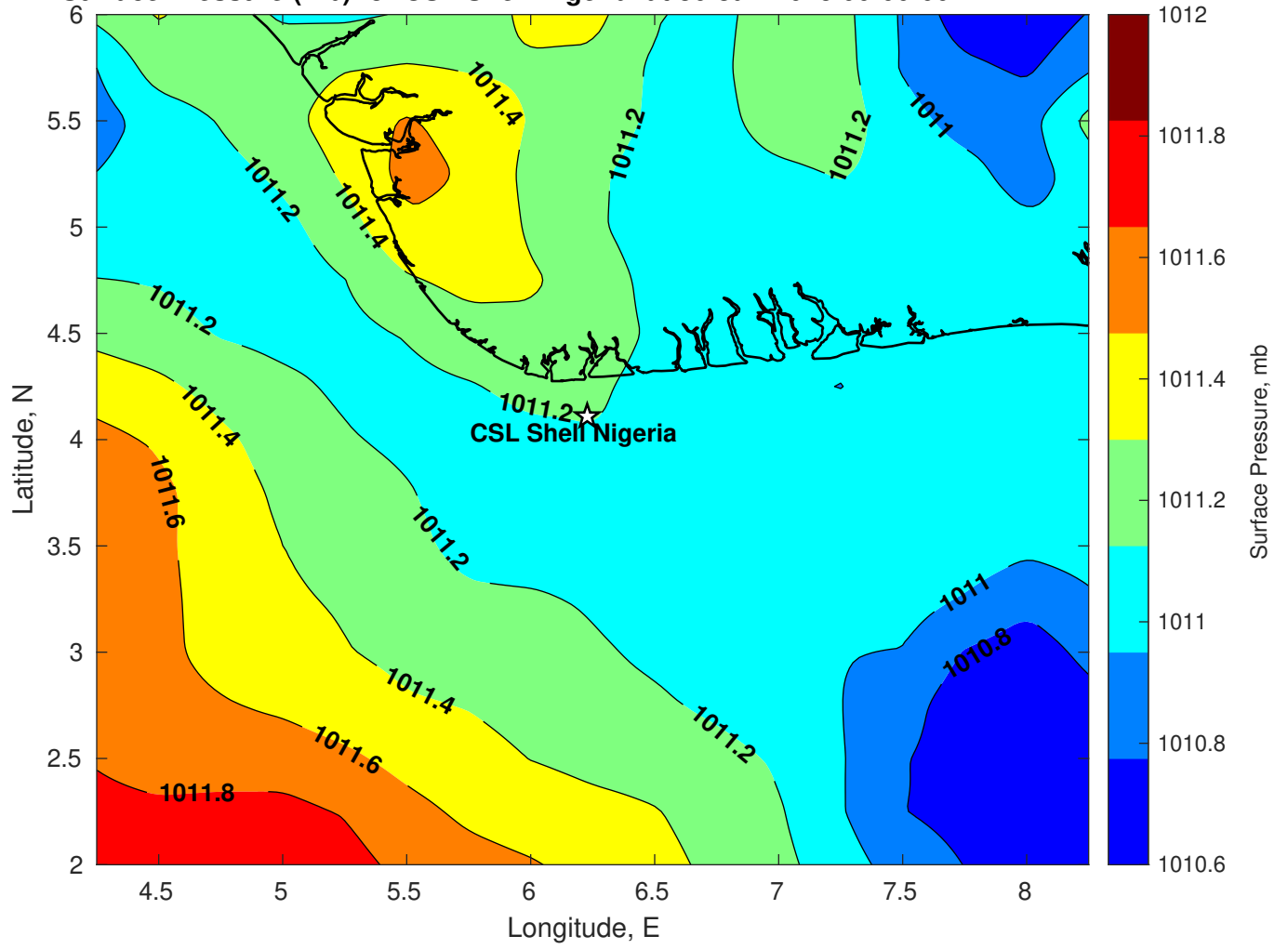




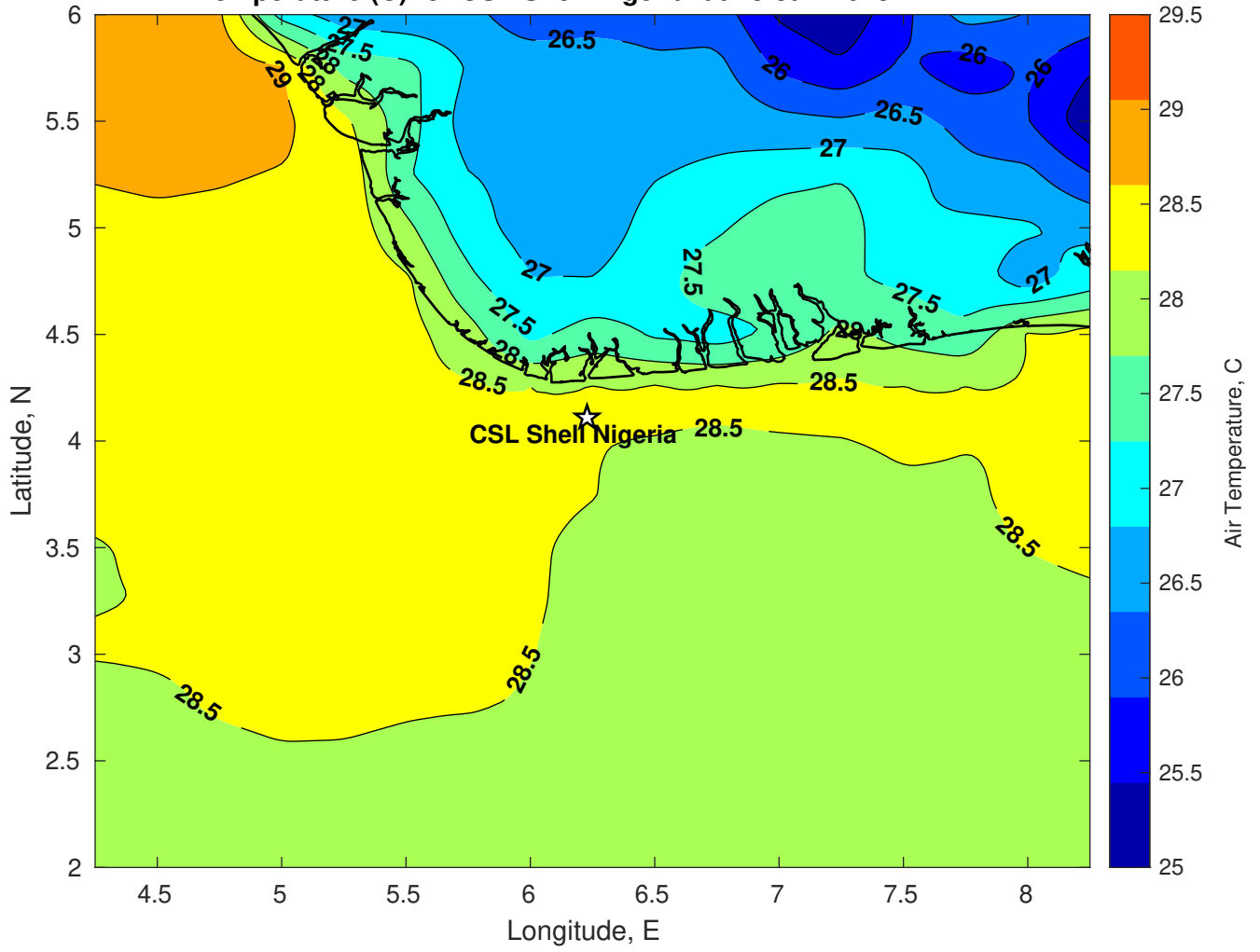
Surface Pressure (mb) for CSL Shell Nigeria at 29-Jan-2025 00:00:00



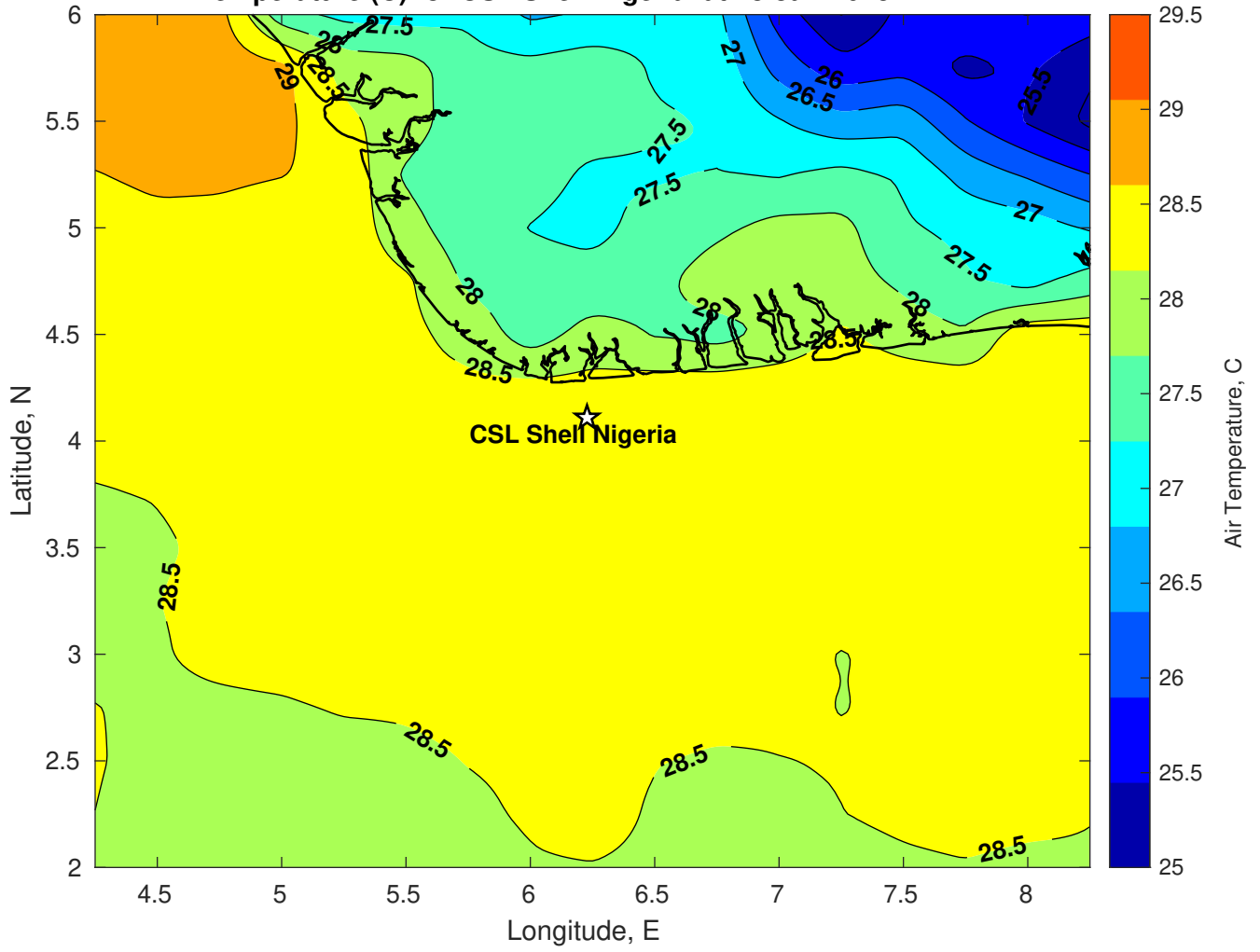
Surface Pressure (mb) for CSL Shell Nigeria at 30-Jan-2025 00:00:00



Air Temperature (C) for CSL Shell Nigeria at 28-Jan-2025



Air Temperature (C) for CSL Shell Nigeria at 28-Jan-2025



Air Temperature (C) for CSL Shell Nigeria at 28-Jan-2025

