
Marine Weather Forecast for CSL Shell Nigeria

Forecast valid as of 31-Jan-2025 0900 GMT

All times are local.

Today

Winds: NW, 10-15 kts.

Waves: N, 1-2 feet, 11-12 sec.

No currents available.

Tonight

Winds: NW, 10-15 kts.

Waves: N, 2-3 feet, 10-11 sec.

No currents available.

Saturday

Winds: NW, 10-15 kts.

Waves: N, 2-3 feet, 10-11 sec.

No currents available.

Saturday Night

Winds: NW, 10-15 kts.

Waves: N, 2-3 feet, 10-11 sec.

No currents available.

Sunday

Winds: NW, 10-15 kts.

Waves: N, 2-3 feet, 9-10 sec.

No currents available.

Sunday Night

Winds: NW, 10-15 kts.

Waves: N, 2-3 feet, 14-15 sec.

No currents available.

Monday

Winds: NW, 10-15 kts.

Waves: N, 2-3 feet, 14-15 sec.

No currents available.

Monday Night

Winds: NW, 10-15 kts.

Waves: N, 2-3 feet, 13-14 sec.

No currents available.

Tuesday

Winds: NW, 10-15 kts.

Waves: N, 2-3 feet, 12-13 sec.

No currents available.

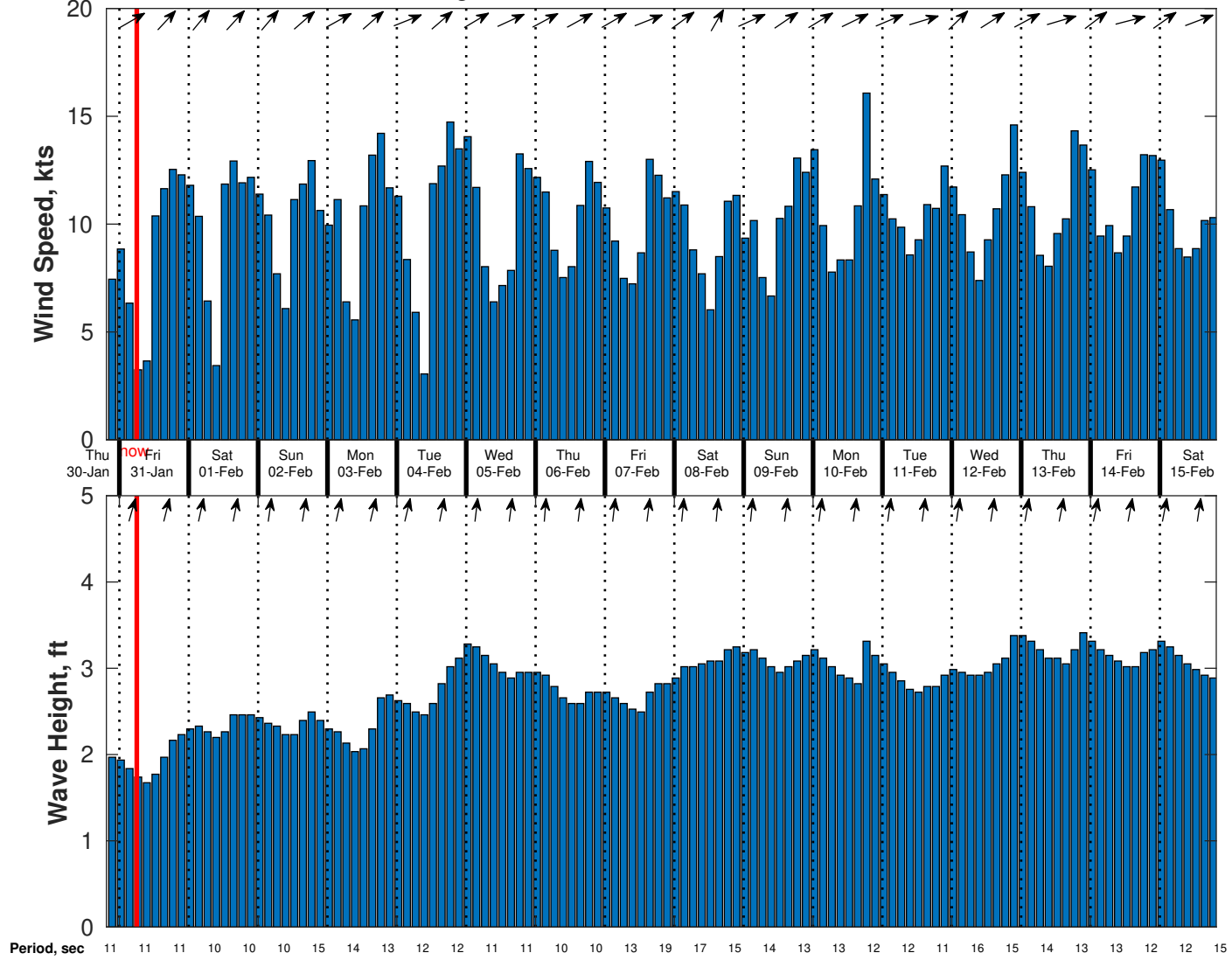
Tuesday Night

Winds: NW, 10-15 kts.

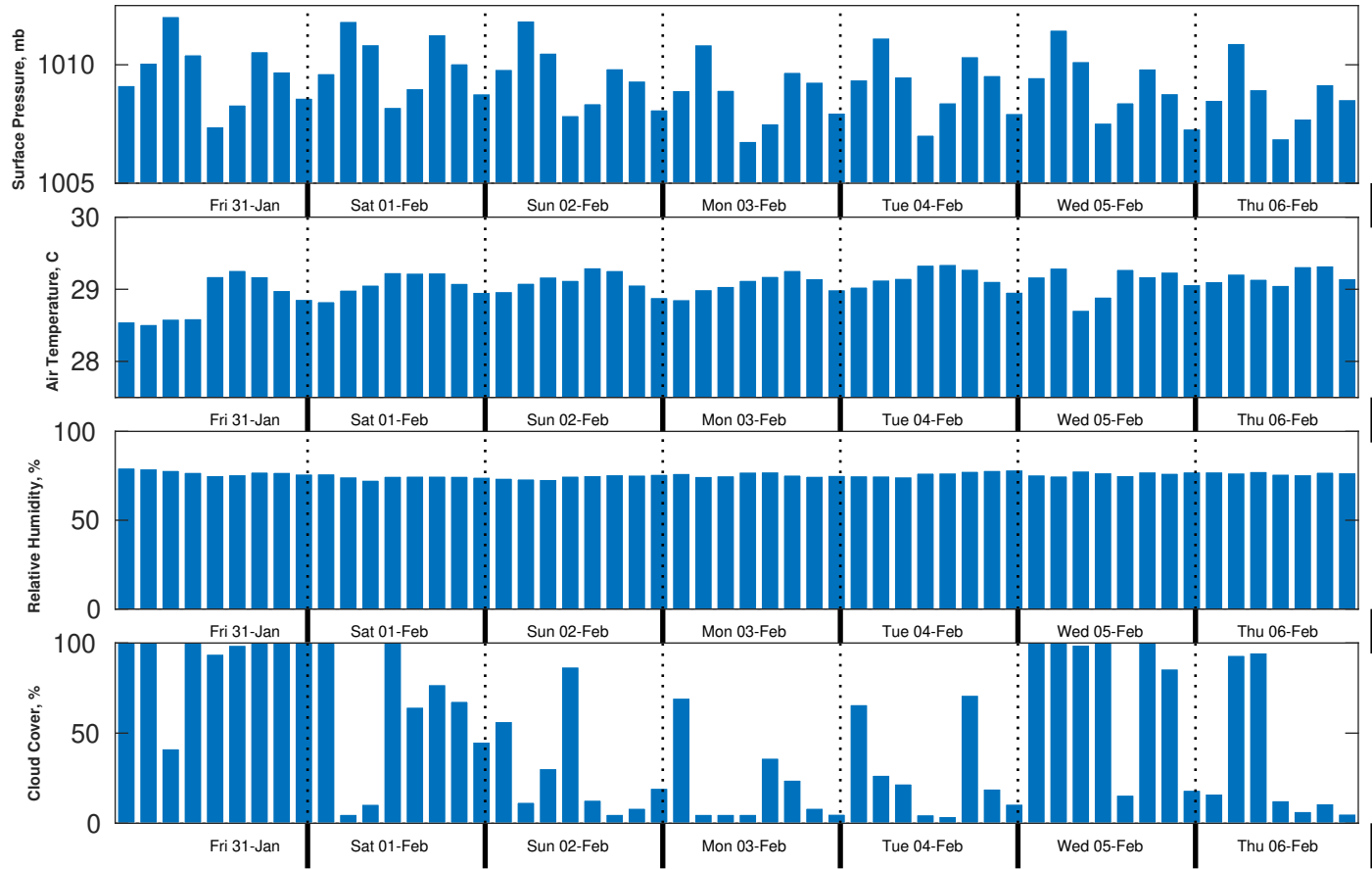
Waves: N, 3-4 feet, 11-12 sec.

No currents available.

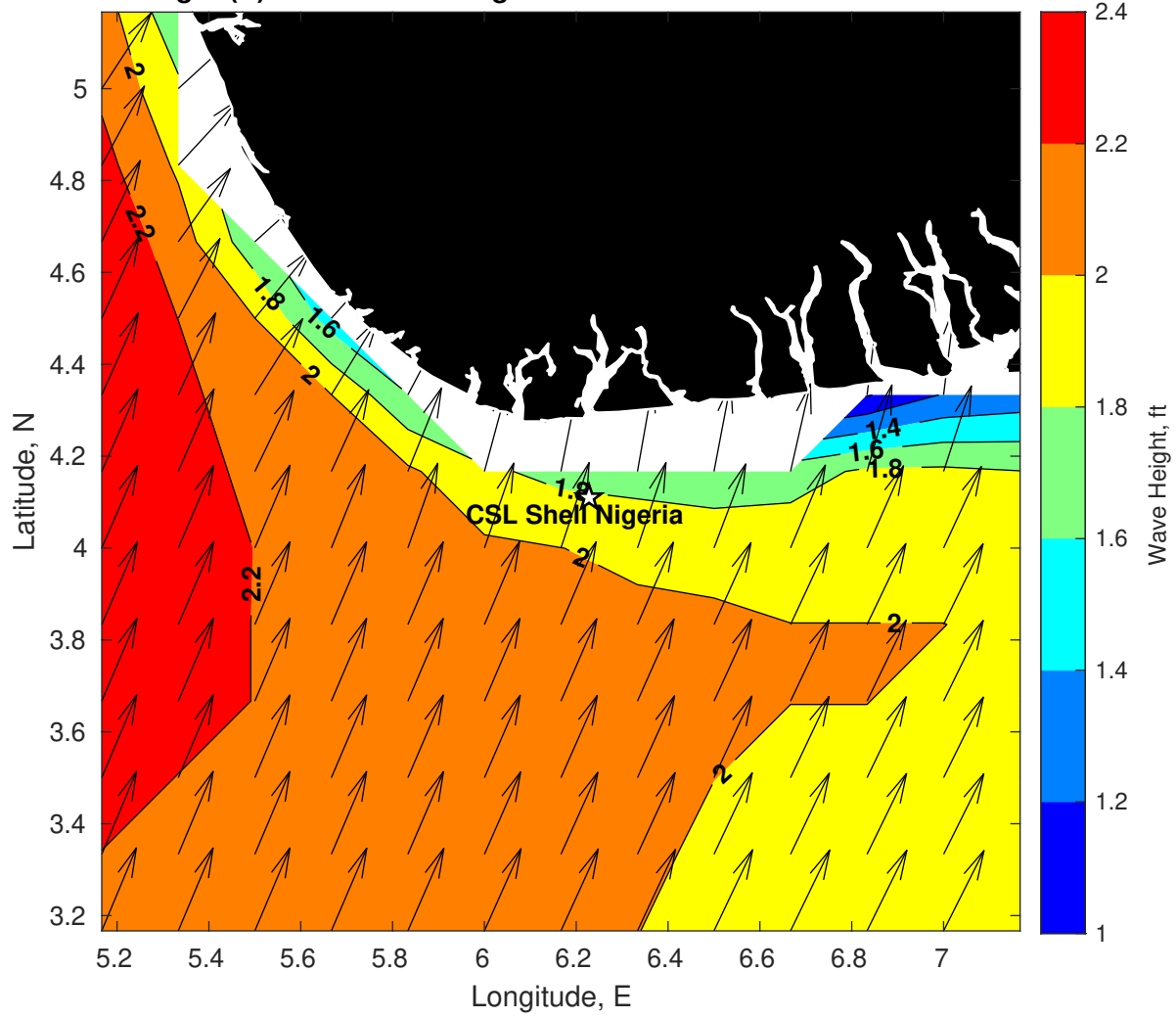
Wind & Wave Forecast for CSL Shell Nigeria from 30-Jan-2025 20:00:00 to 15-Feb-2025 20:00:00



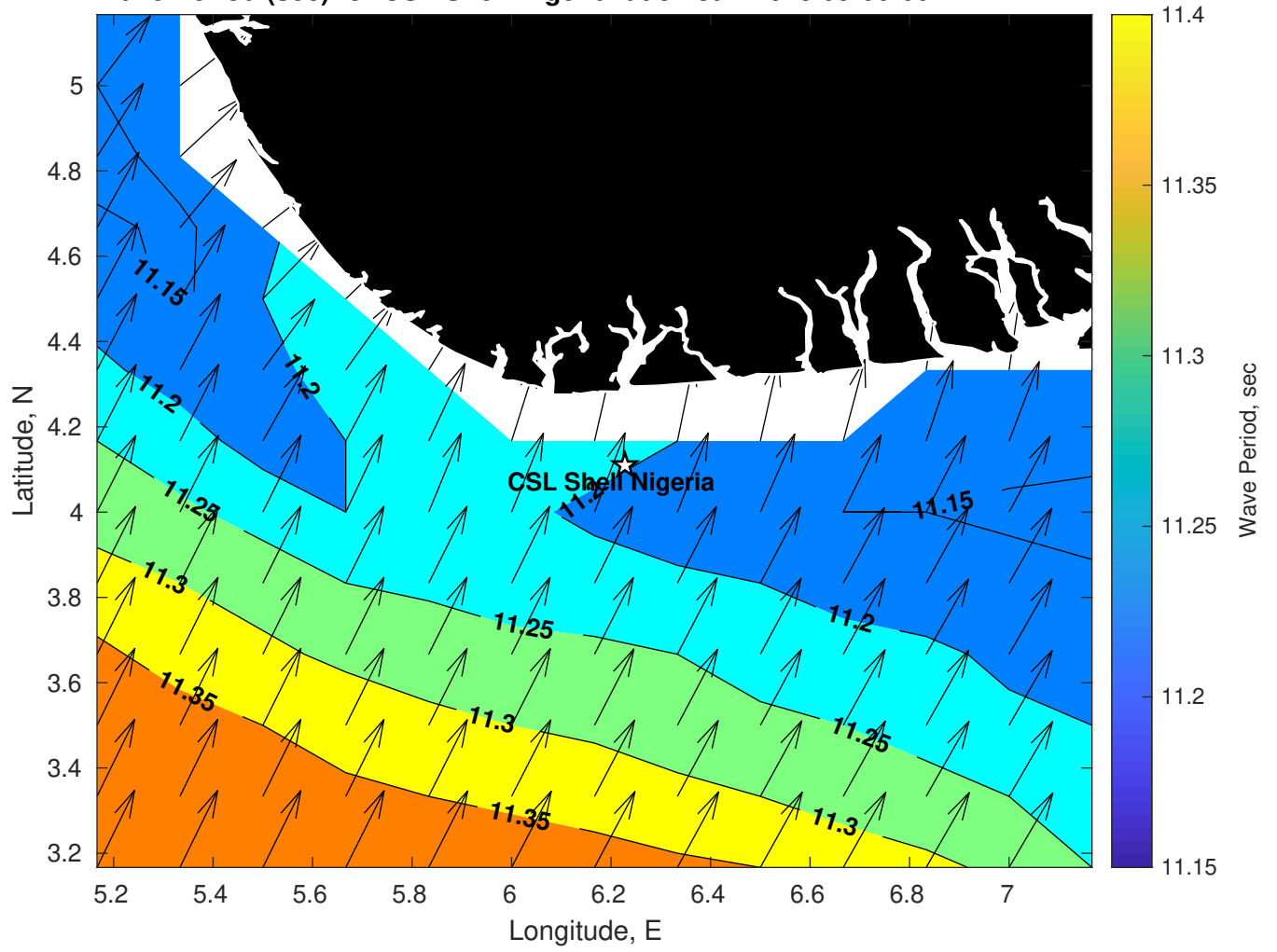
Met Forecast for CSL Shell Nigeria from 31-Jan-2025 00:00:00 to 07-Feb-2025 00:00:00



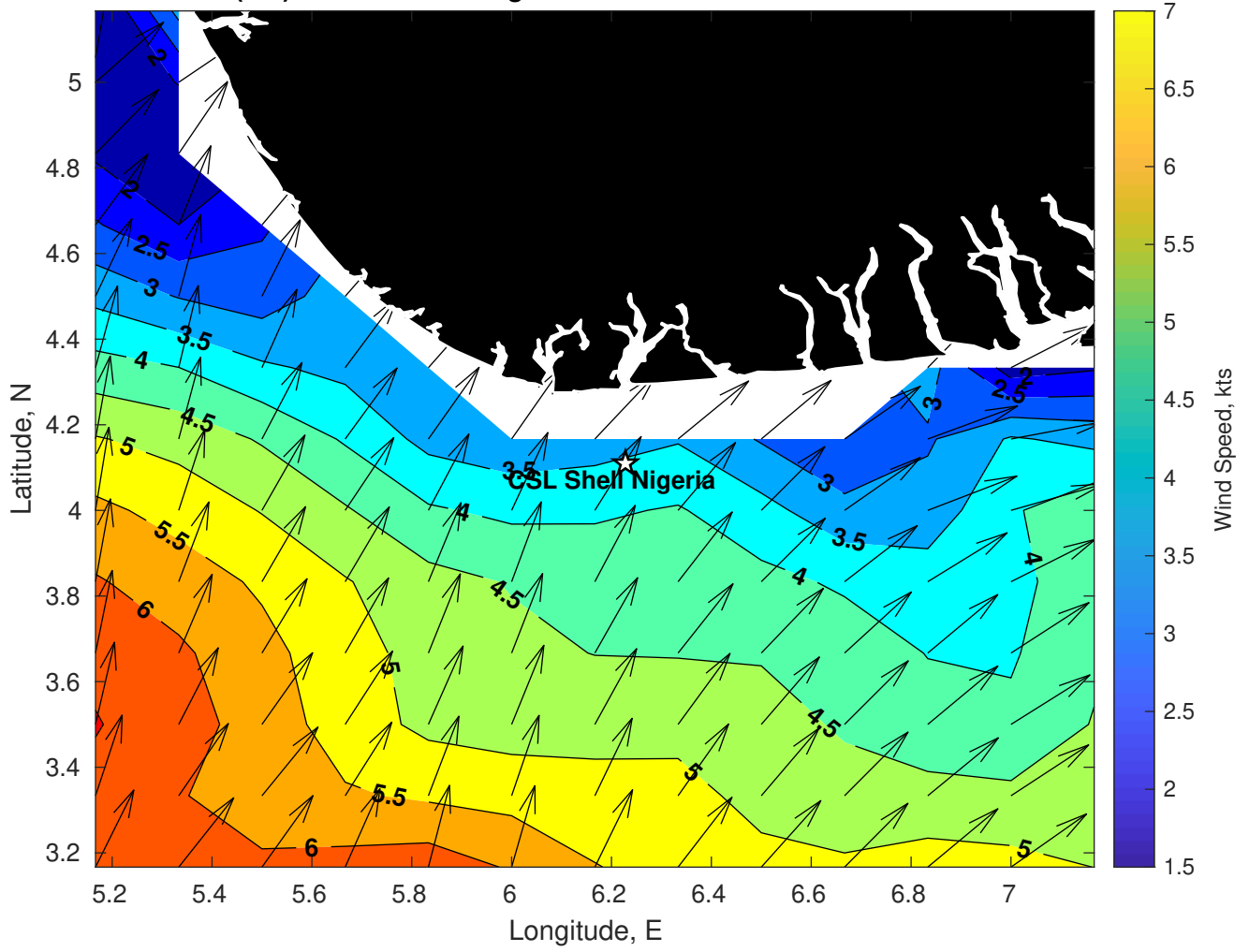
Wave Height (ft) for CSL Shell Nigeria at 31-Jan-2025 09:00:00



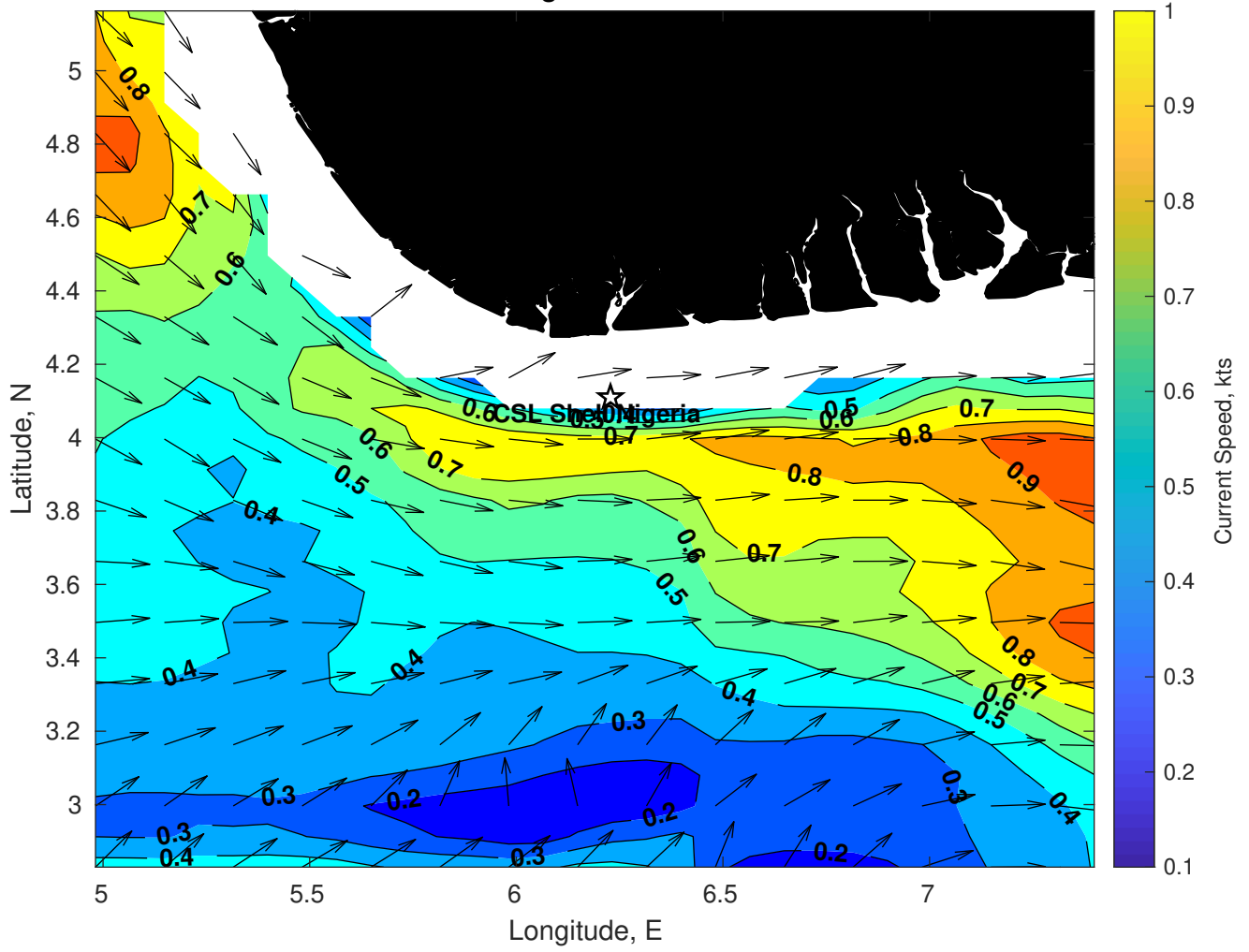
Wave Period (sec) for CSL Shell Nigeria at 31-Jan-2025 09:00:00



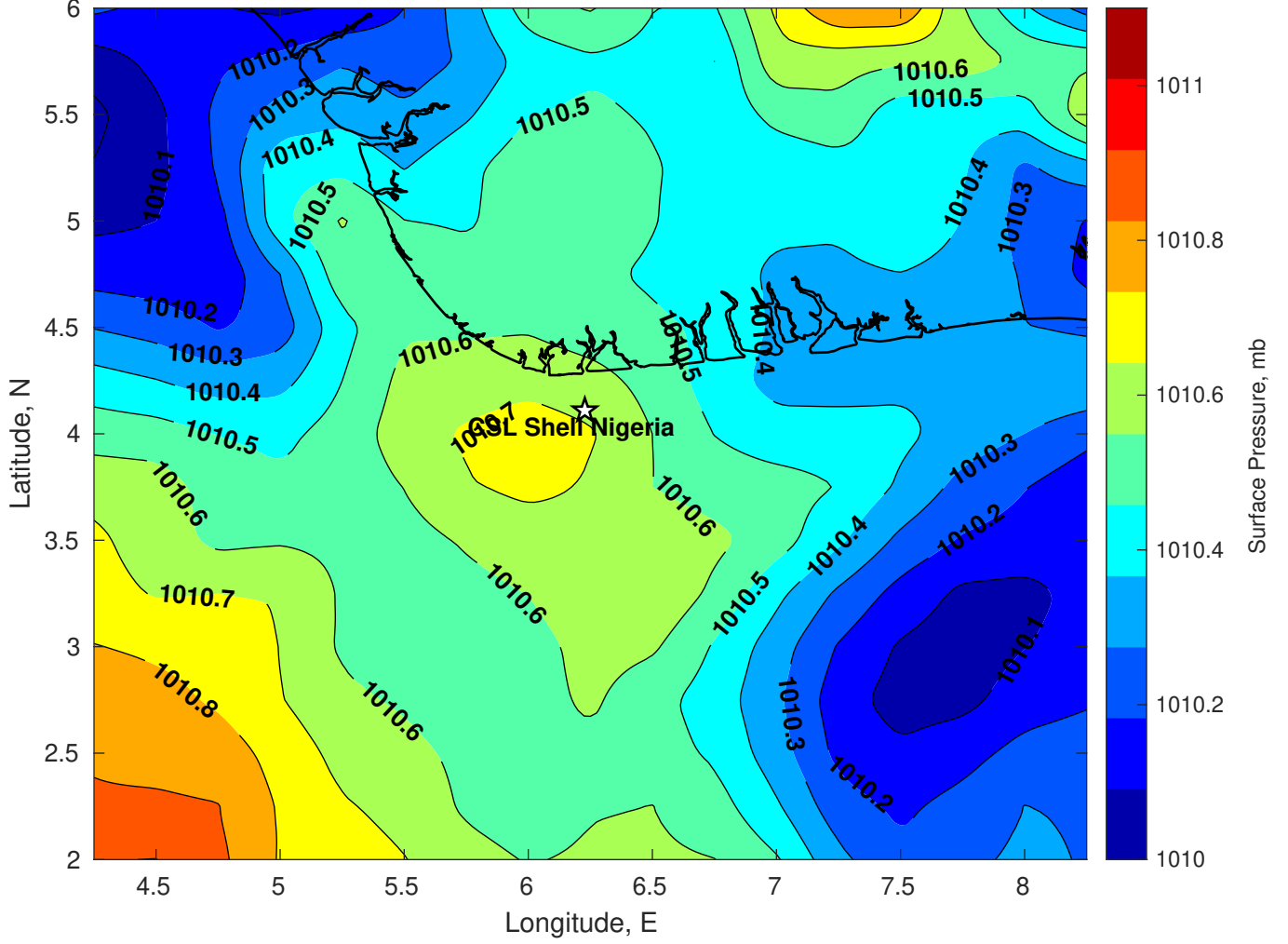
Winds (kts) for CSL Shell Nigeria at 31-Jan-2025 09:00:00



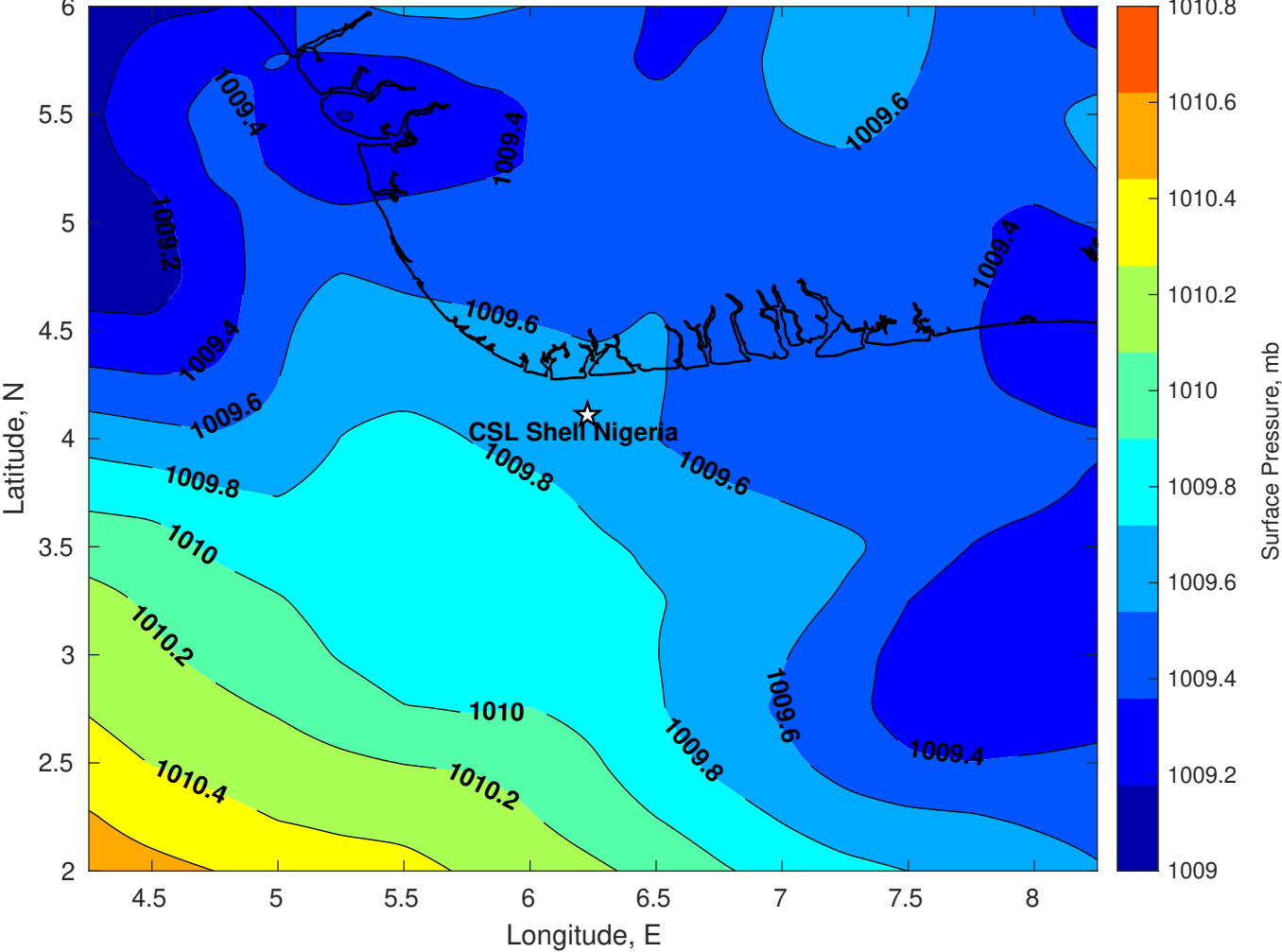
Surface Currents for CSL Shell Nigeria at 30-Jan-2025 00:00:00



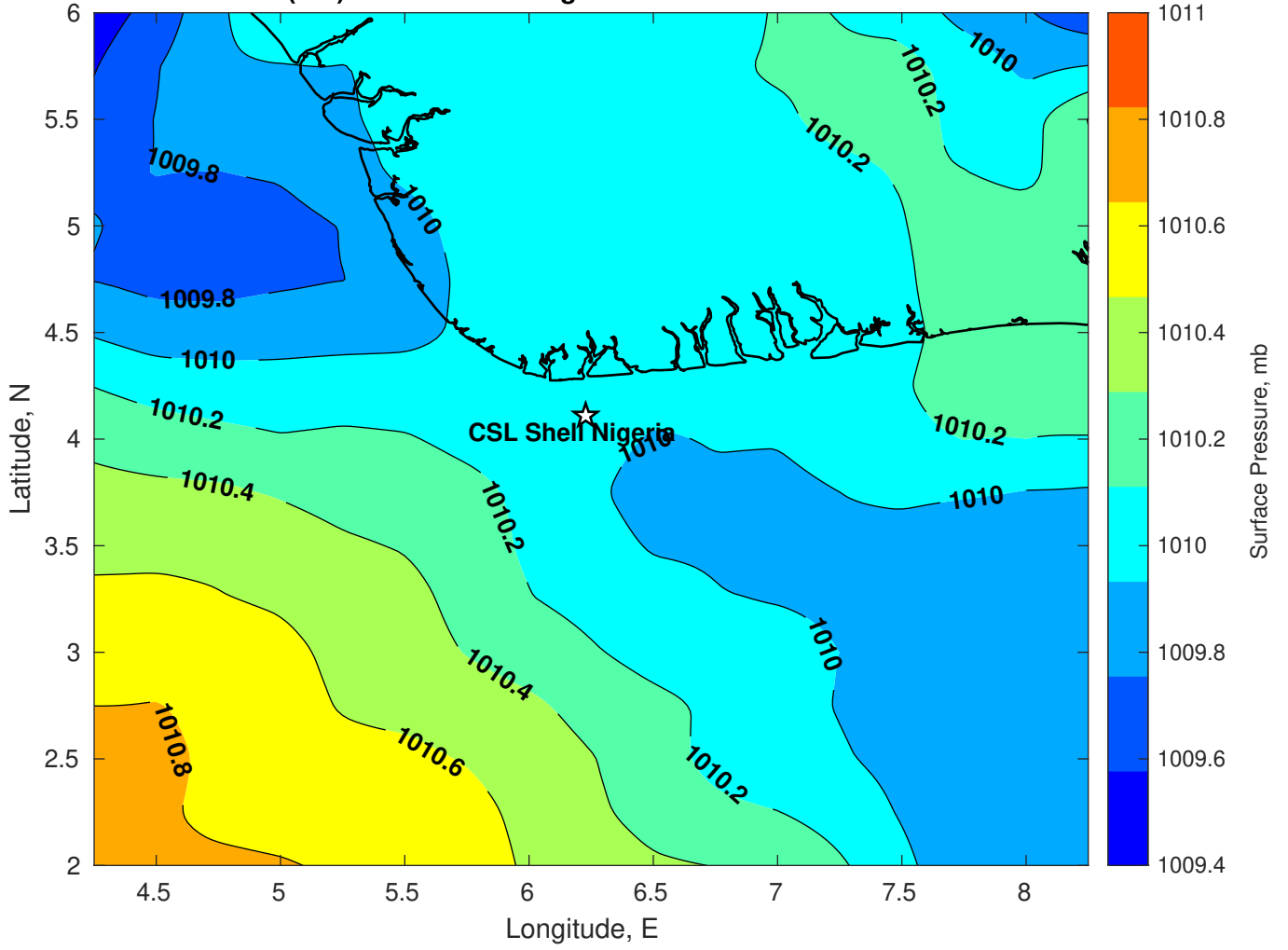
Surface Pressure (mb) for CSL Shell Nigeria at 31-Jan-2025 00:00:00



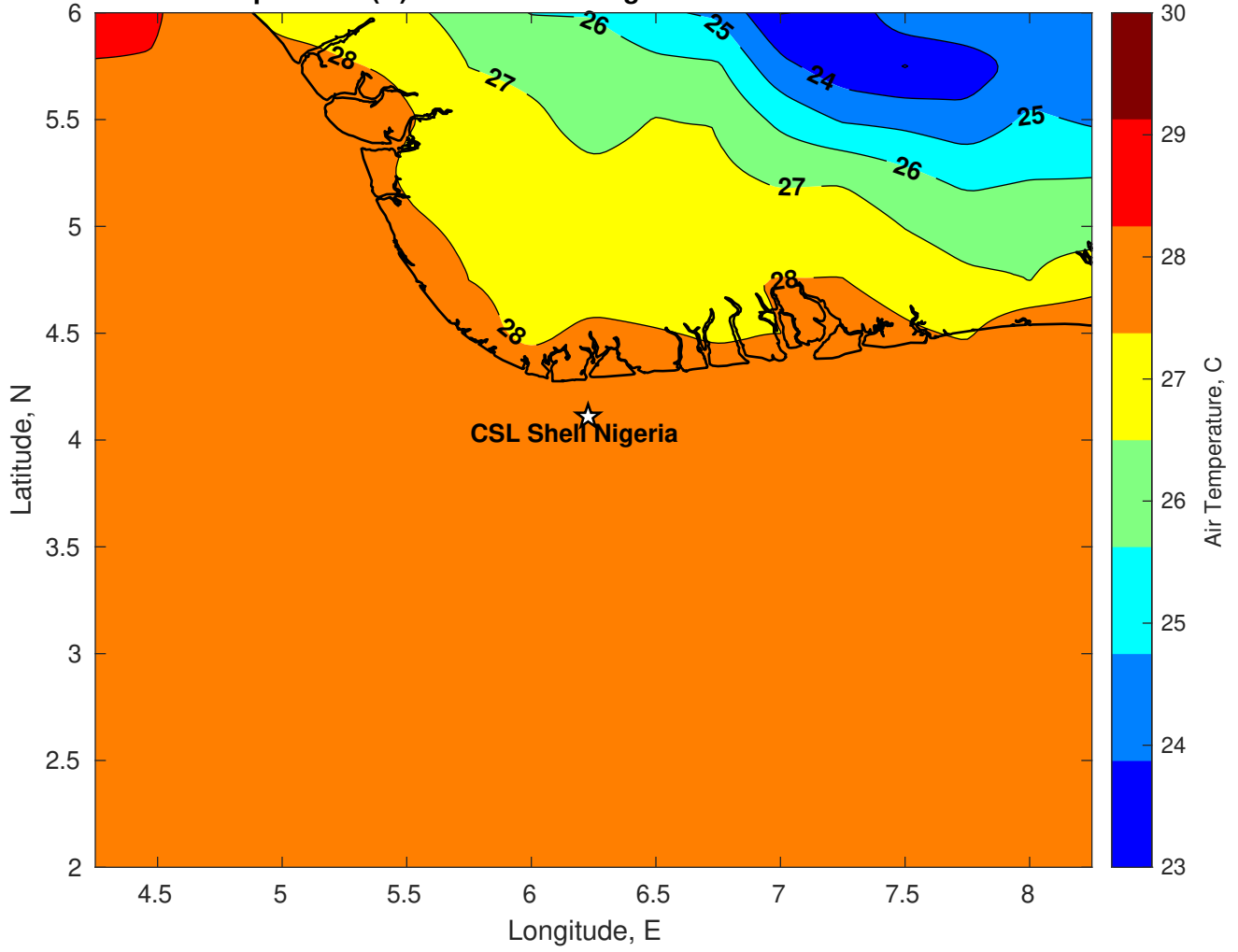
Surface Pressure (mb) for CSL Shell Nigeria at 01-Feb-2025 00:00:00



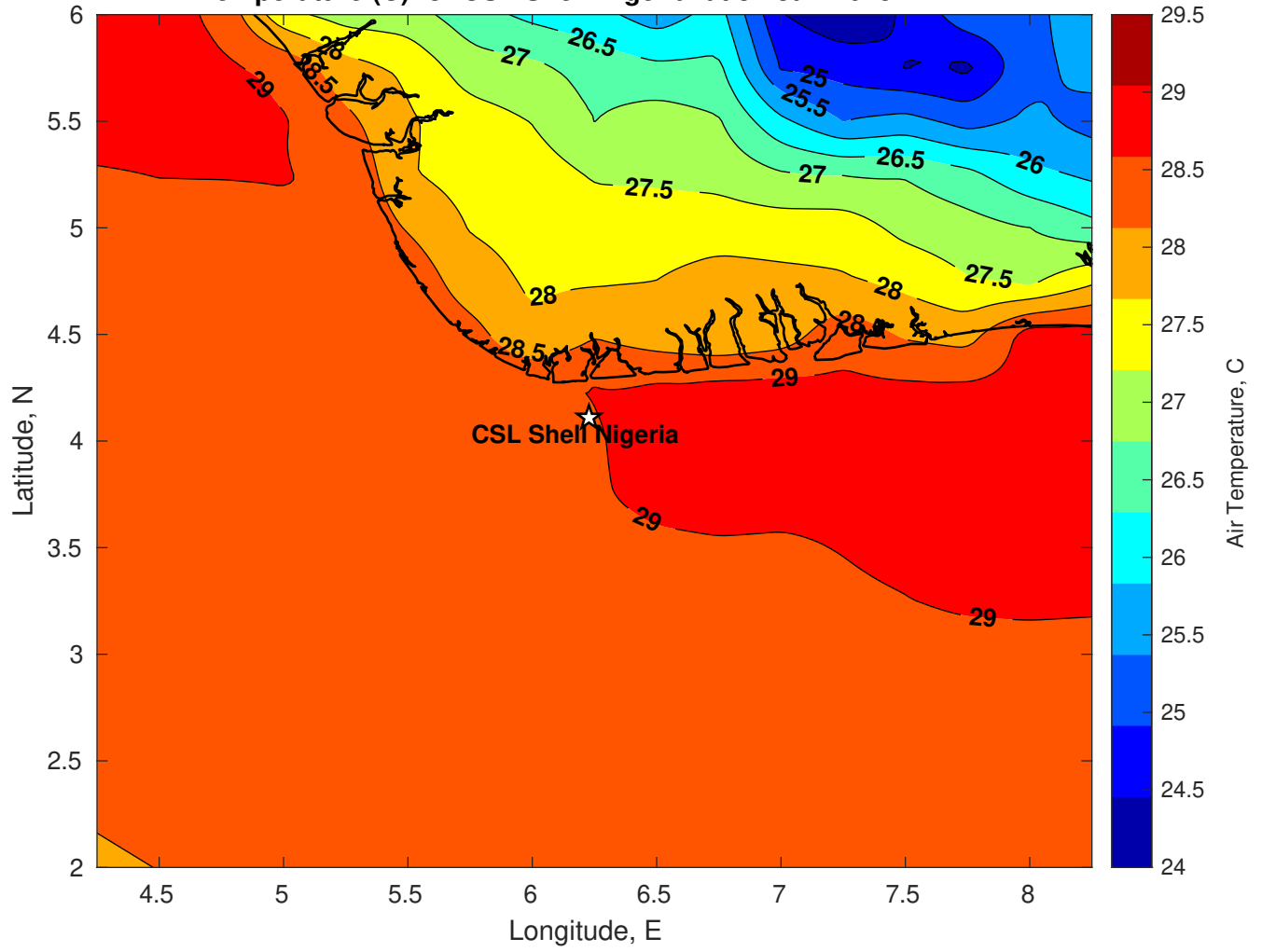
Surface Pressure (mb) for CSL Shell Nigeria at 02-Feb-2025 00:00:00



Air Temperature (C) for CSL Shell Nigeria at 31-Jan-2025



Air Temperature (C) for CSL Shell Nigeria at 31-Jan-2025



Air Temperature (C) for CSL Shell Nigeria at 31-Jan-2025

