

\*\*\*\*\*

Marine Weather Forecast for Proteus  
Forecast valid as of 31-Jan-2025 2100 GMT  
\*\*\*\*\*

All times are local.

Tonight

Winds: NW, 10-15 kts.  
Waves: N, 2-3 feet, 10-11 sec.  
Currents: E, 0.5-1 kts.

Saturday

Winds: NW, 10-15 kts.  
Waves: N, 2-3 feet, 10-11 sec.  
Currents: E, 0.5-1 kts.

Saturday Night

Winds: NW, 10-15 kts.  
Waves: N, 2-3 feet, 10-11 sec.  
Currents: E, 0.5-1 kts.

Sunday

Winds: NW, 10-15 kts.  
Waves: N, 2-3 feet, 14-15 sec.  
Currents: E, 0.5-1 kts.

Sunday Night

Winds: N, 10-15 kts.  
Waves: N, 2-3 feet, 9-10 sec.  
Currents: E, 0.5-1 kts.

Monday

Winds: NW, 10-15 kts.  
Waves: NW, 2-3 feet, 12-13 sec.  
Currents: E, 0.5-1 kts.

Monday Night

Winds: N, 10-15 kts.  
Waves: N, 2-3 feet, 13-14 sec.  
Currents: E, 0.5-1 kts.

Tuesday

Winds: NW, 10-15 kts.  
Waves: N, 3-4 feet, 11-12 sec.  
Currents: E, 1-1.5 kts.

Tuesday Night

Winds: NW, 5-10 kts.  
Waves: N, 2-3 feet, 12-13 sec.  
Currents: E, 1-1.5 kts.

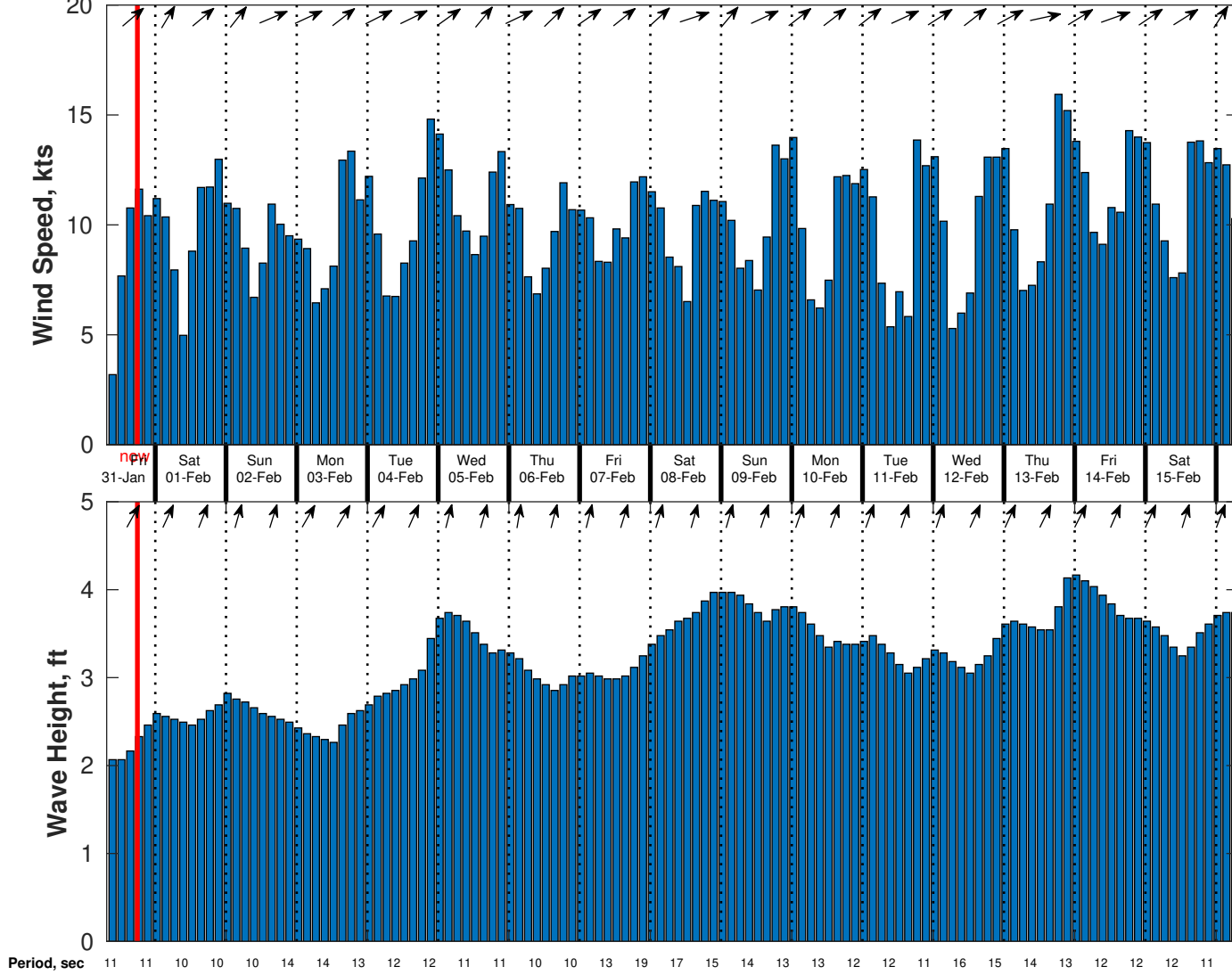
Wednesday

Winds: NW, 10-15 kts.  
Waves: N, 3-4 feet, 10-11 sec.  
Currents: E, 0.5-1 kts.

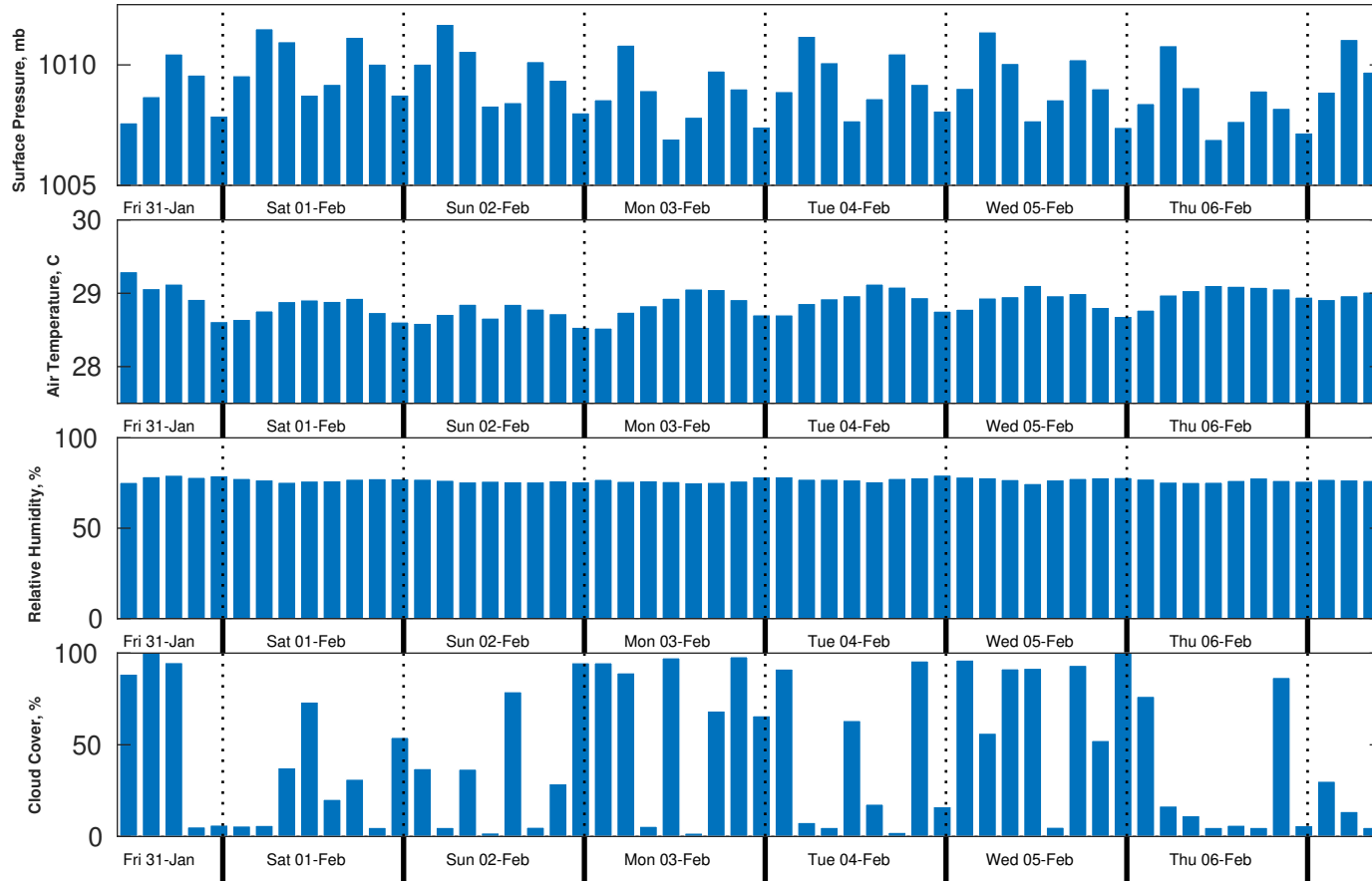
Wednesday Night

Winds: NW, 10-15 kts.  
Waves: N, 3-4 feet, 11-12 sec.

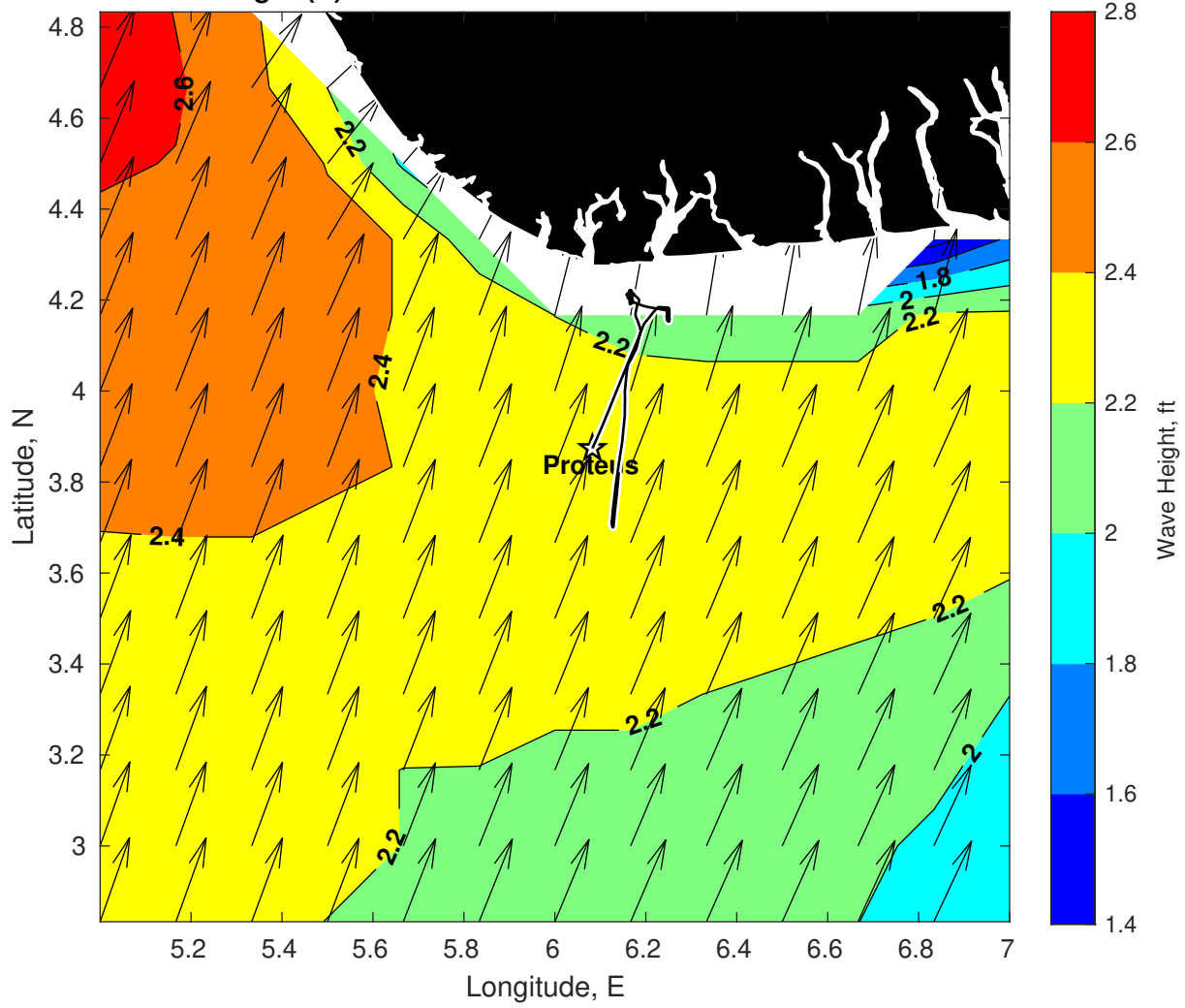
Wind & Wave Forecast for Proteus from 31-Jan-2025 08:00:00 to 16-Feb-2025 08:00:00



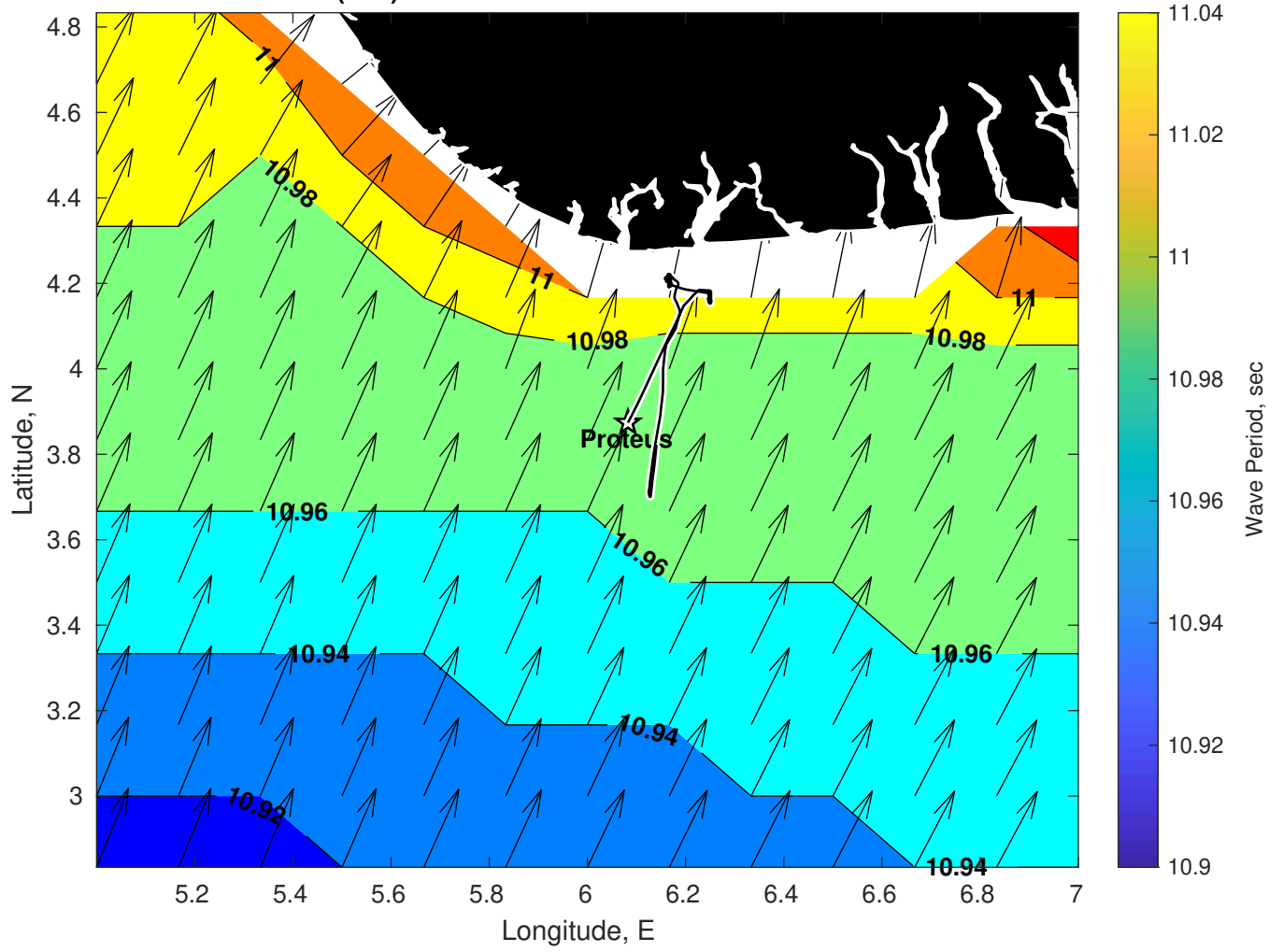
### Met Forecast for Proteus from 31-Jan-2025 12:00:00 to 07-Feb-2025 12:00:00



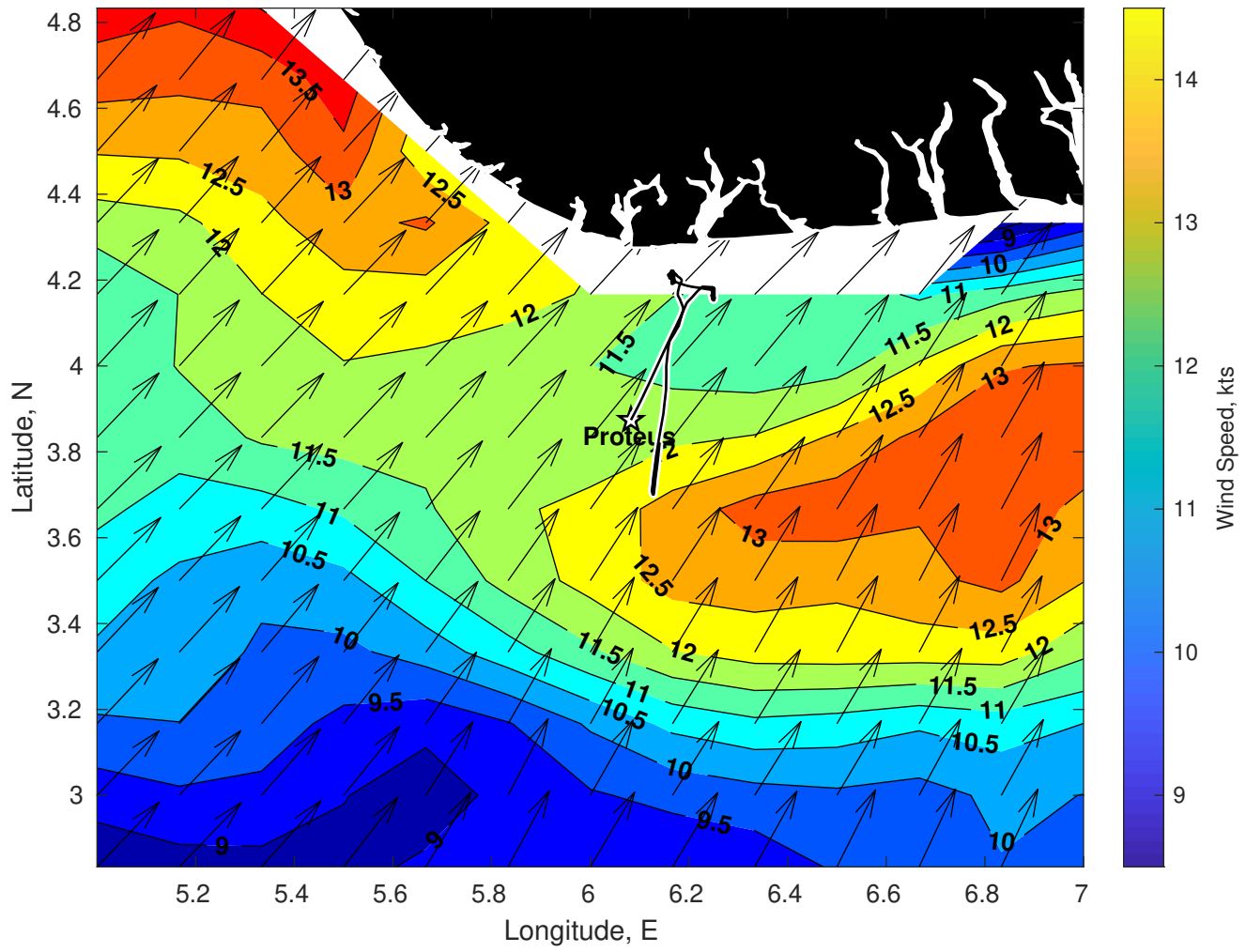
Wave Height (ft) for Proteus at 31-Jan-2025 21:00:00



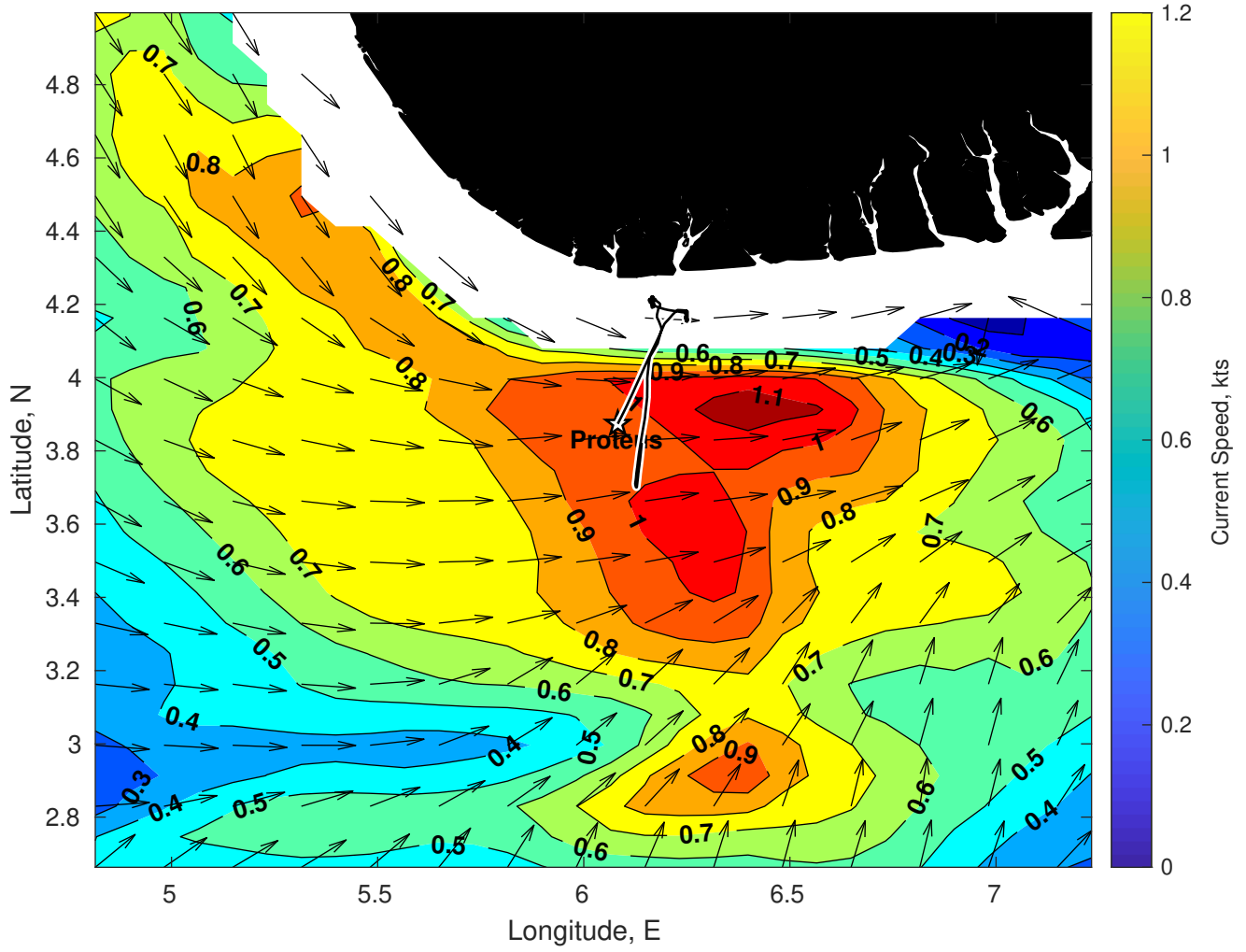
Wave Period (sec) for Proteus at 31-Jan-2025 21:00:00



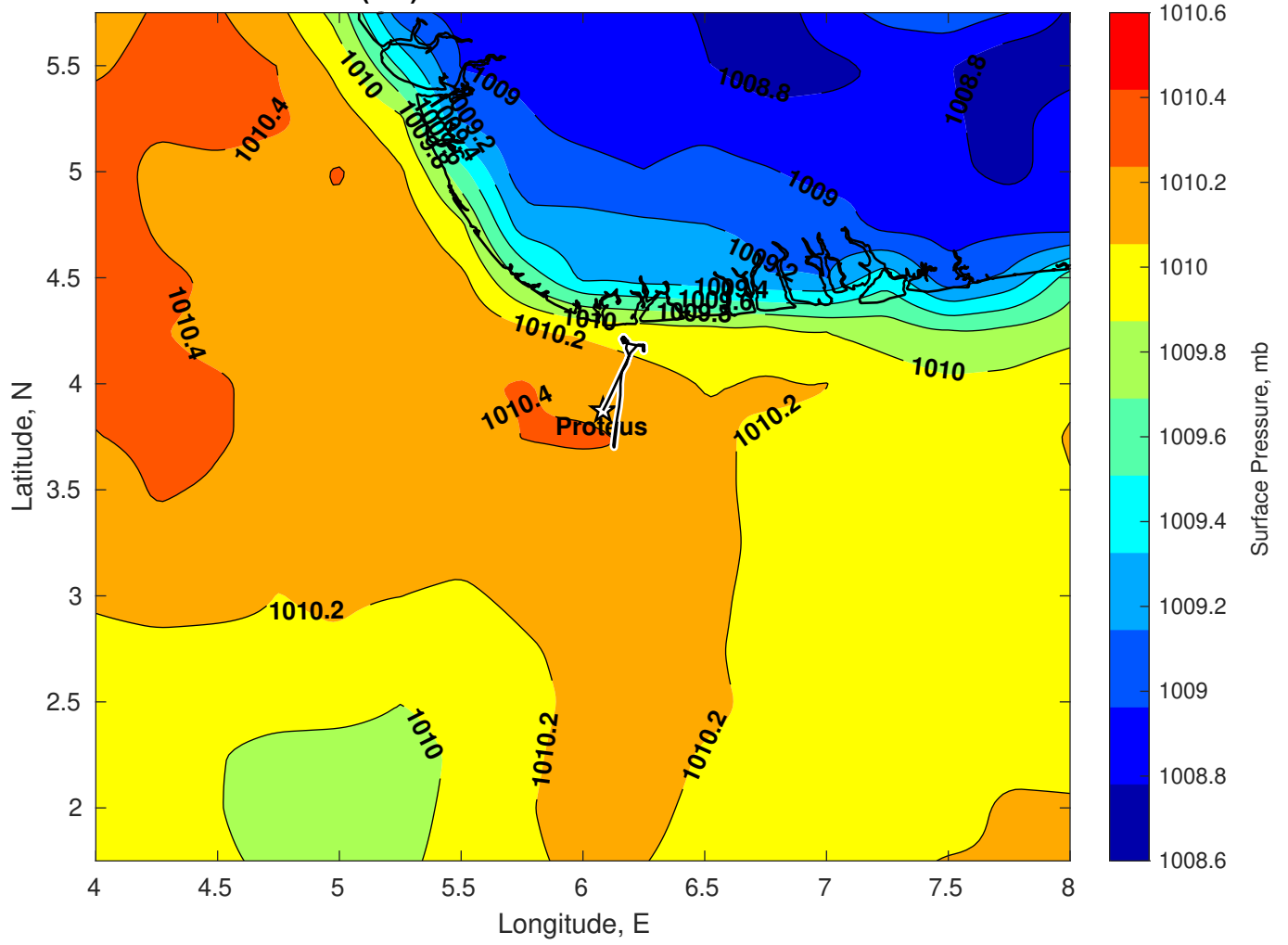
Winds (kts) for Proteus at 31-Jan-2025 21:00:00



Surface Currents for Proteus at 31-Jan-2025 00:00:00

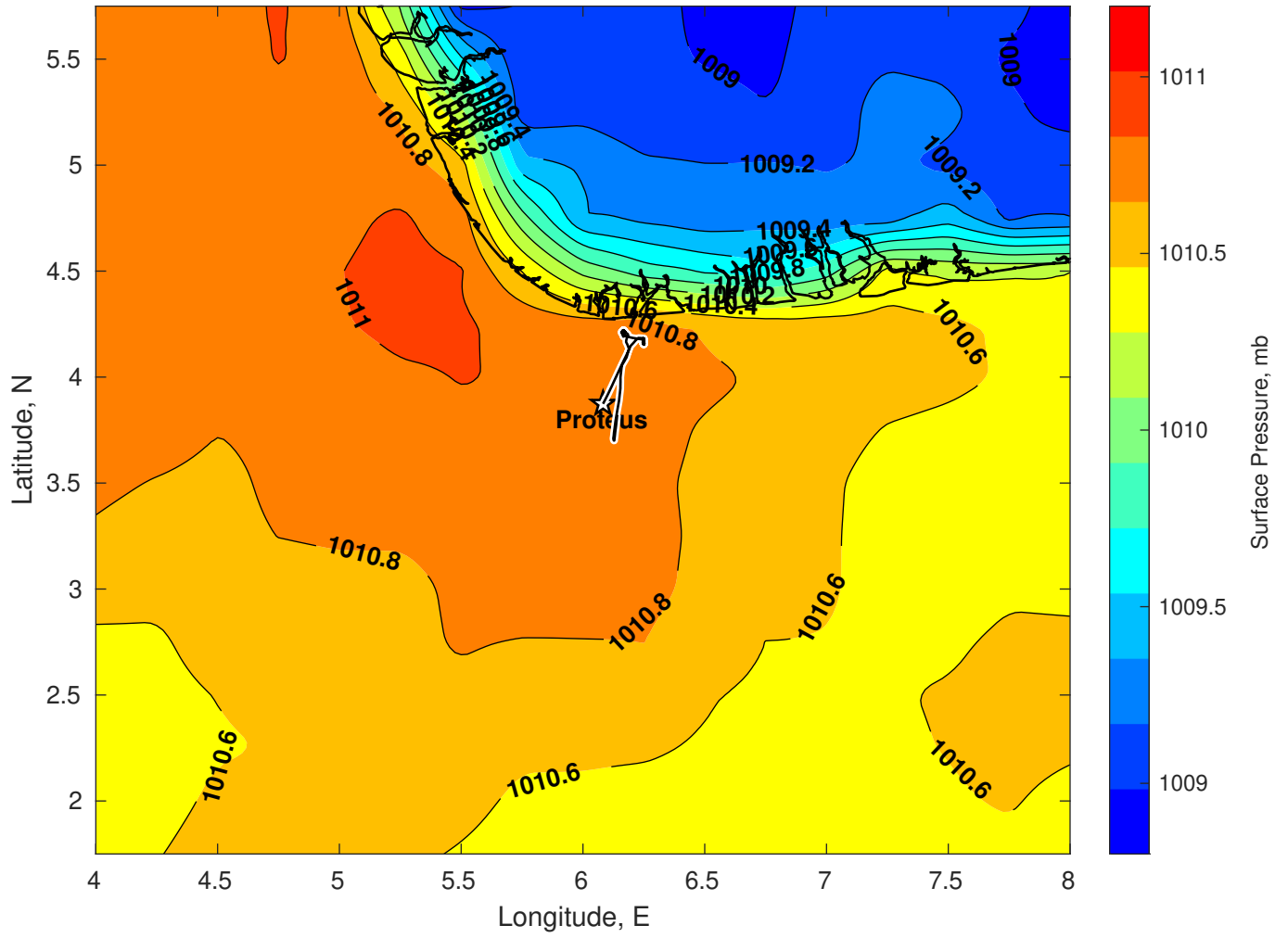


Surface Pressure (mb) for Proteus at 31-Jan-2025 12:00:00

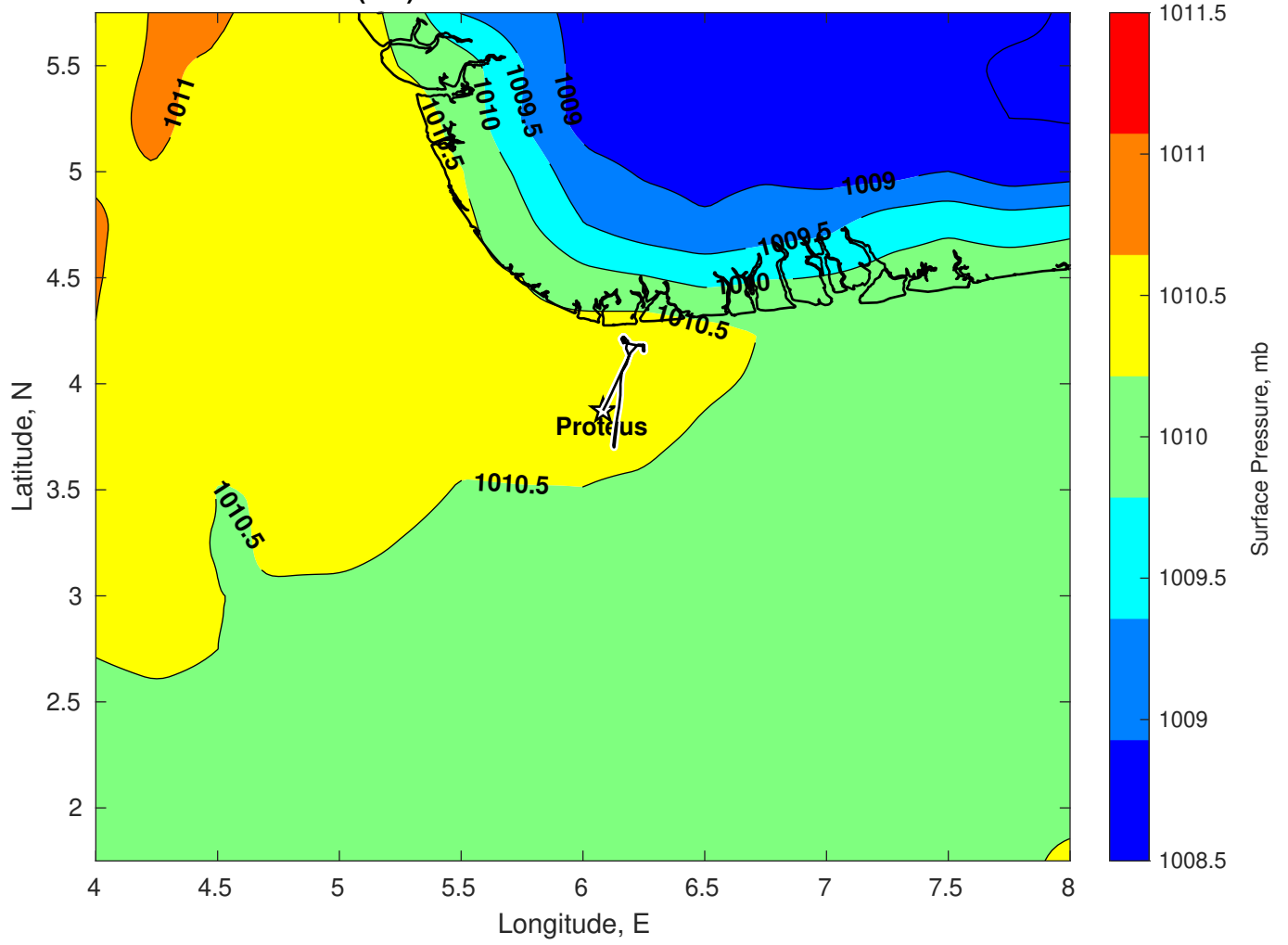




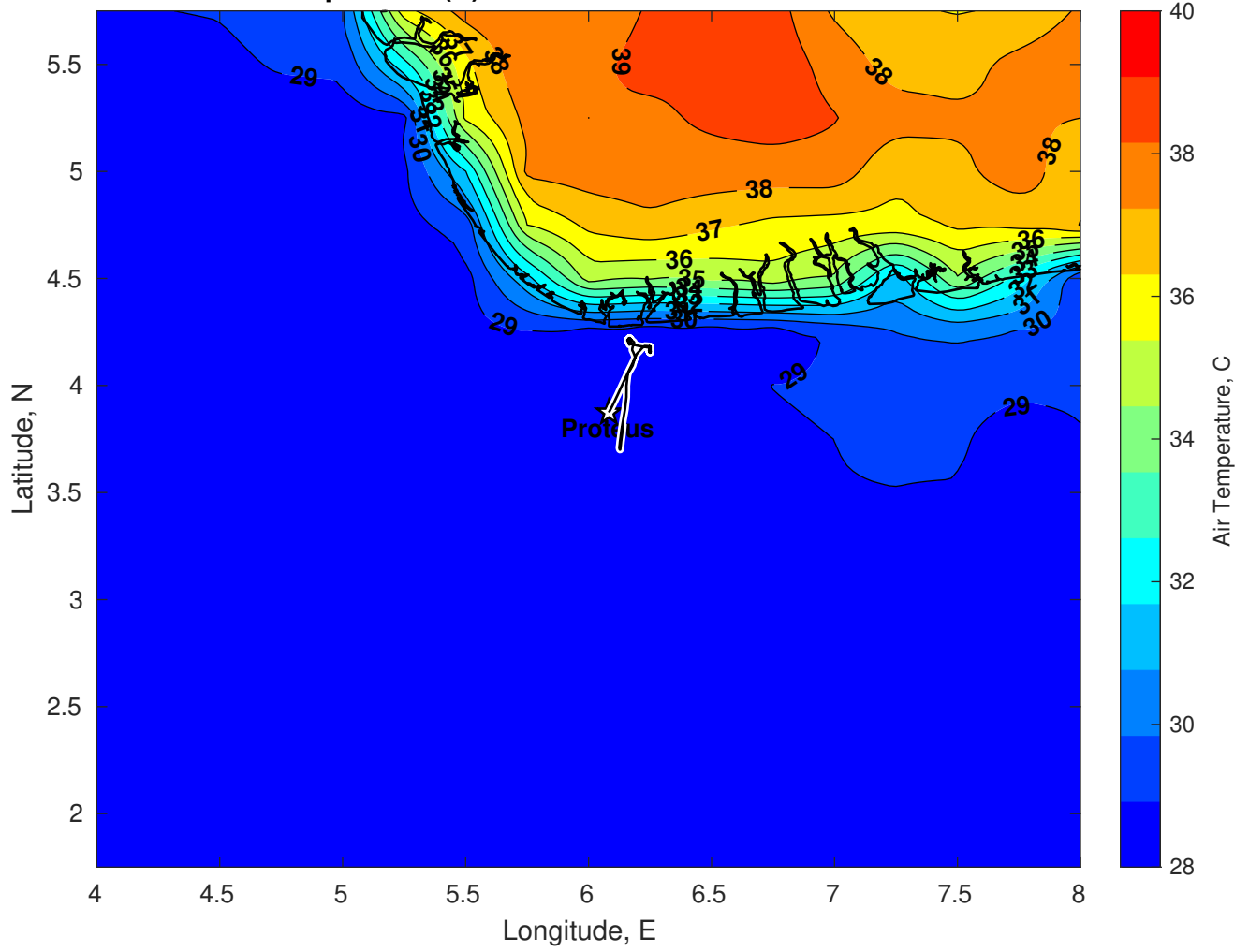
Surface Pressure (mb) for Proteus at 01-Feb-2025 12:00:00



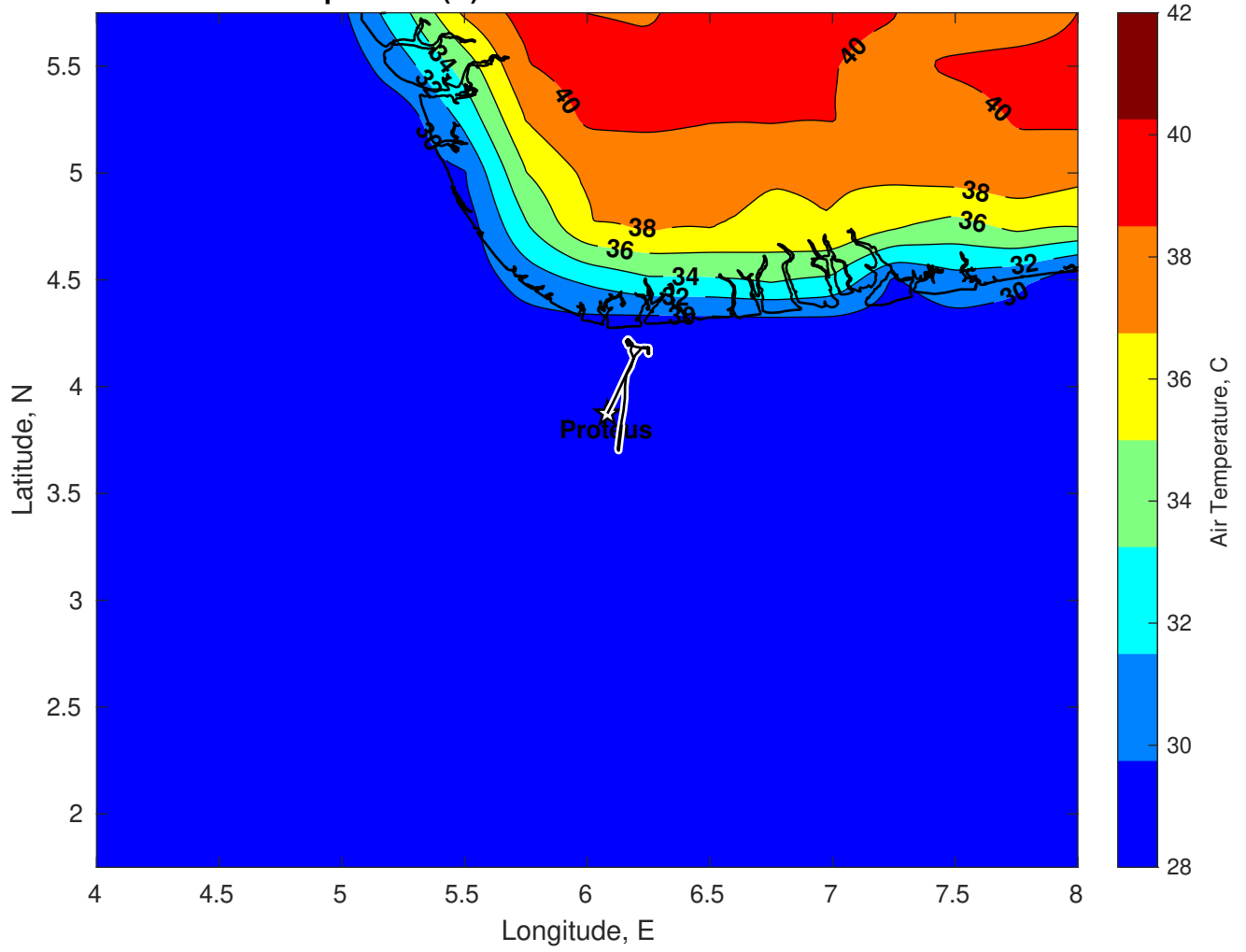
Surface Pressure (mb) for Proteus at 02-Feb-2025 12:00:00



Air Temperature (C) for Proteus at 31-Jan-2025



Air Temperature (C) for Proteus at 31-Jan-2025



Air Temperature (C) for Proteus at 31-Jan-2025

