

\*\*\*\*\*

Marine Weather Forecast for Gyre  
Forecast valid as of 31-Jan-2025 2100 GMT  
\*\*\*\*\*

All times are local.

Tonight

Winds: NE, 25-30 kts.  
Waves: NE, 10-11 feet, 8-9 sec.  
Currents: W, 0.5-1 kts.

Saturday

Winds: NE, 20-25 kts.  
Waves: NE, 9-10 feet, 8-9 sec.  
Currents: W, 0.5-1 kts.

Saturday Night

Winds: NE, 20-25 kts.  
Waves: NE, 10-11 feet, 8-9 sec.  
Currents: W, 0.5-1 kts.

Sunday

Winds: NE, 20-25 kts.  
Waves: NE, 7-8 feet, 15-16 sec.  
Currents: W, 0.5-1 kts.

Sunday Night

Winds: E, 20-25 kts.  
Waves: NE, 8-9 feet, 7-8 sec.  
Currents: W, 0.5-1 kts.

Monday

Winds: NE, 15-20 kts.  
Waves: NW, 7-8 feet, 14-15 sec.  
Currents: W, 0.5-1 kts.

Monday Night

Winds: E, 15-20 kts.  
Waves: NW, 7-8 feet, 15-16 sec.  
Currents: W, 0.5-1 kts.

Tuesday

Winds: NE, 20-25 kts.  
Waves: NW, 8-9 feet, 17-18 sec.  
Currents: W, 0.5-1 kts.

Tuesday Night

Winds: NE, 20-25 kts.  
Waves: NW, 7-8 feet, 13-14 sec.  
Currents: W, 0.5-1 kts.

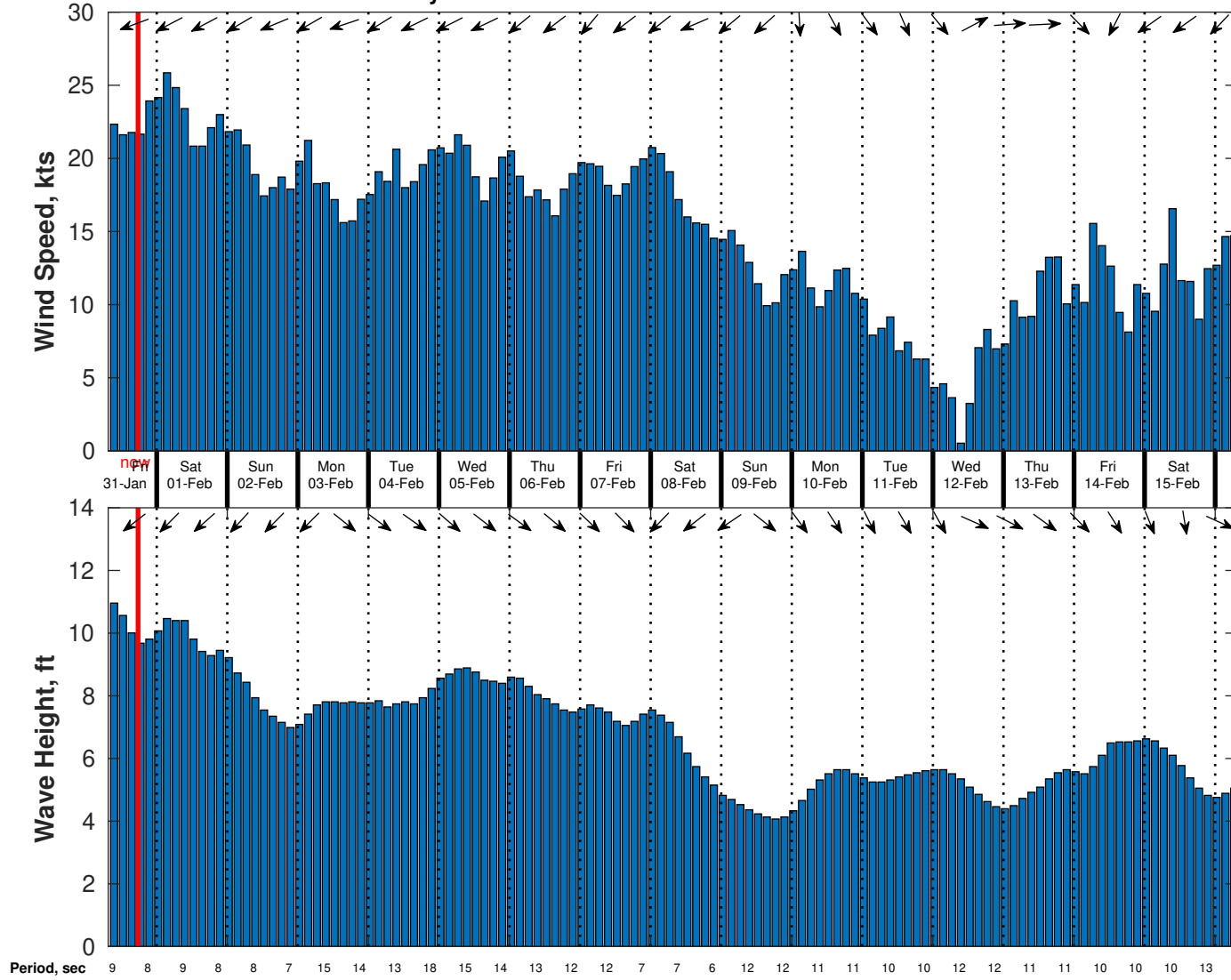
Wednesday

Winds: NE, 20-25 kts.  
Waves: NW, 8-9 feet, 14-15 sec.  
Currents: W, 0.5-1 kts.

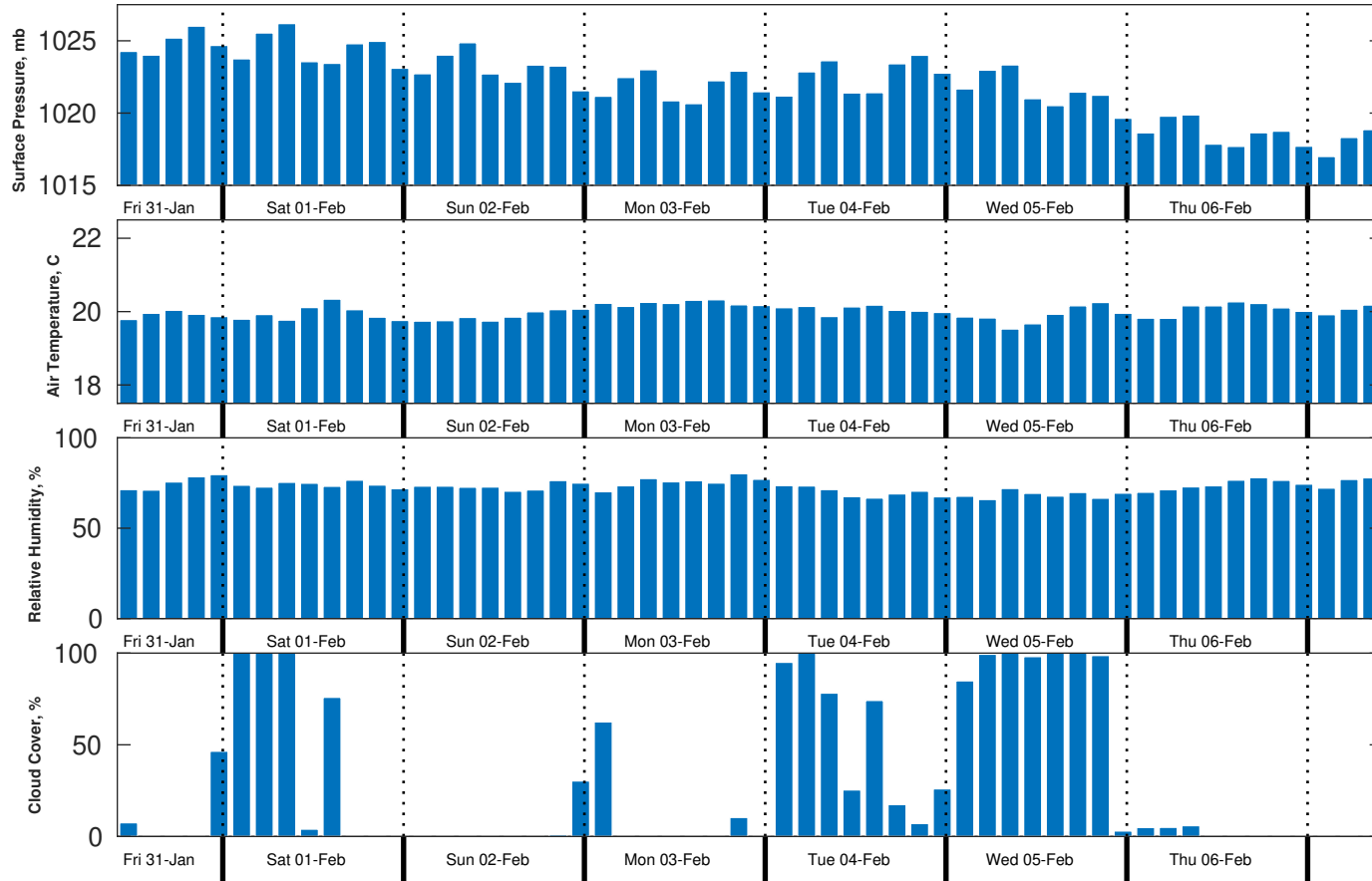
Wednesday Night

Winds: NE, 20-25 kts.  
Waves: NW, 8-9 feet, 15-16 sec.

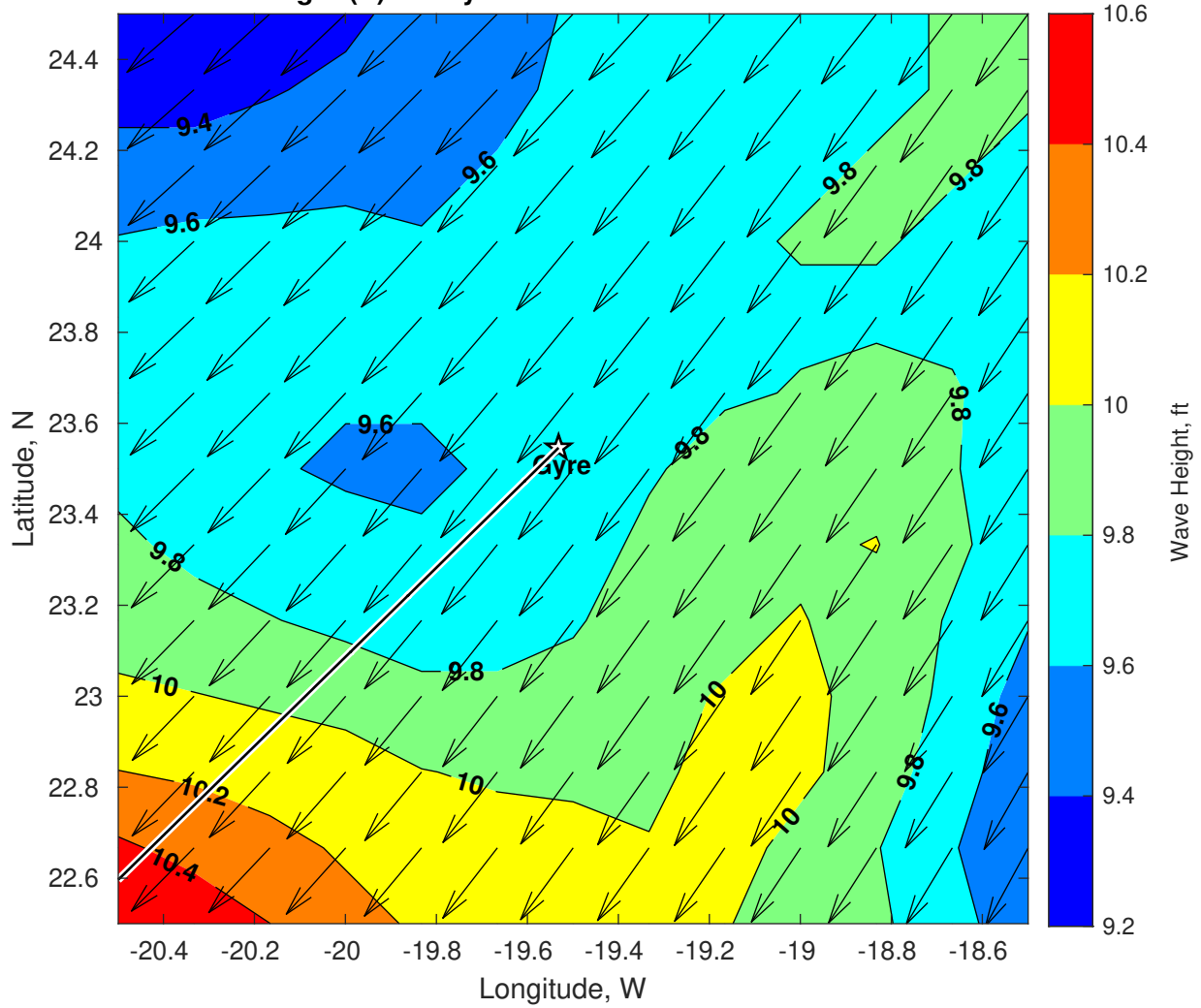
Wind & Wave Forecast for Gyre from 31-Jan-2025 08:00:00 to 16-Feb-2025 08:00:00



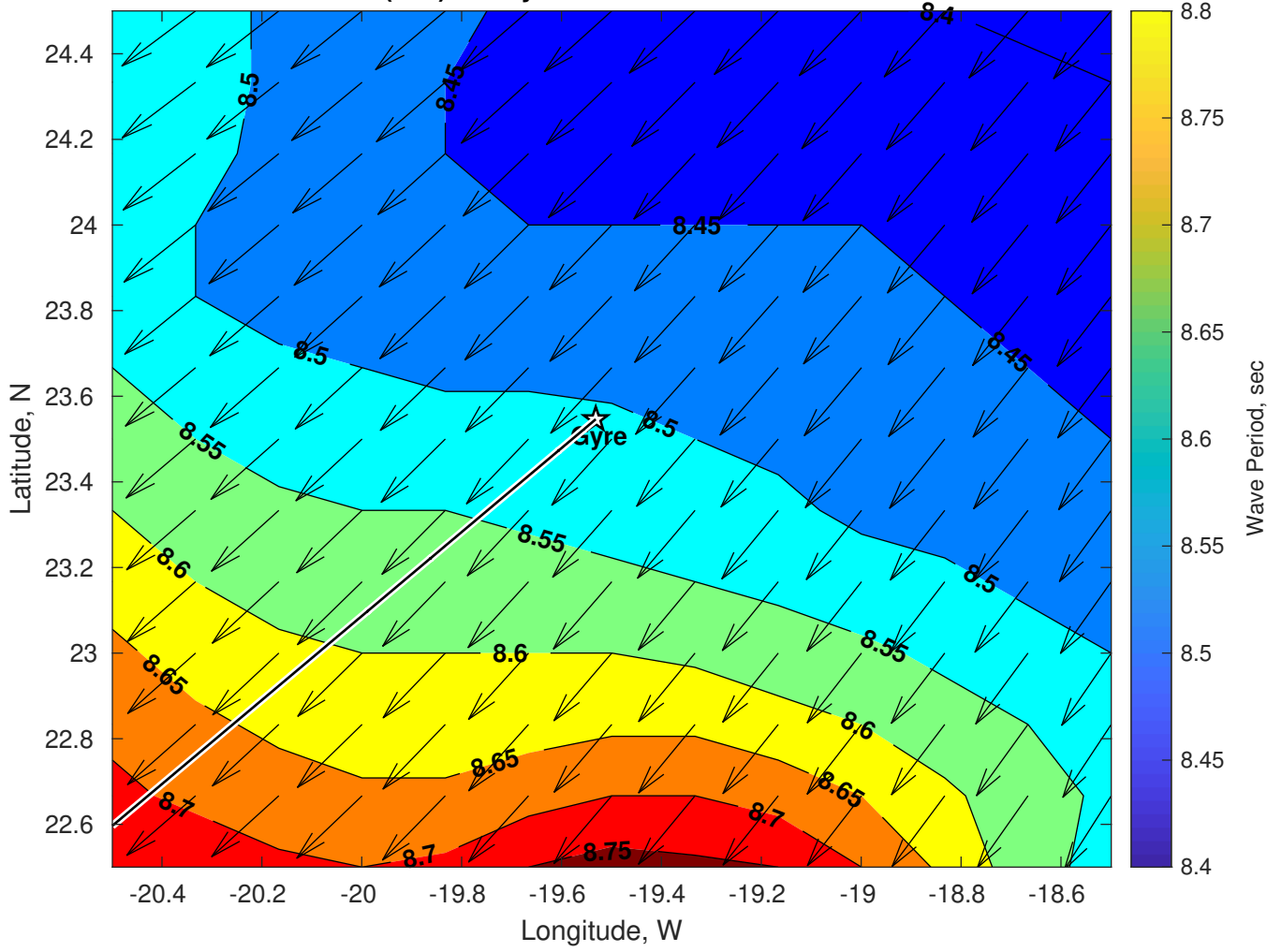
Met Forecast for Gyre from 31-Jan-2025 12:00:00 to 07-Feb-2025 12:00:00



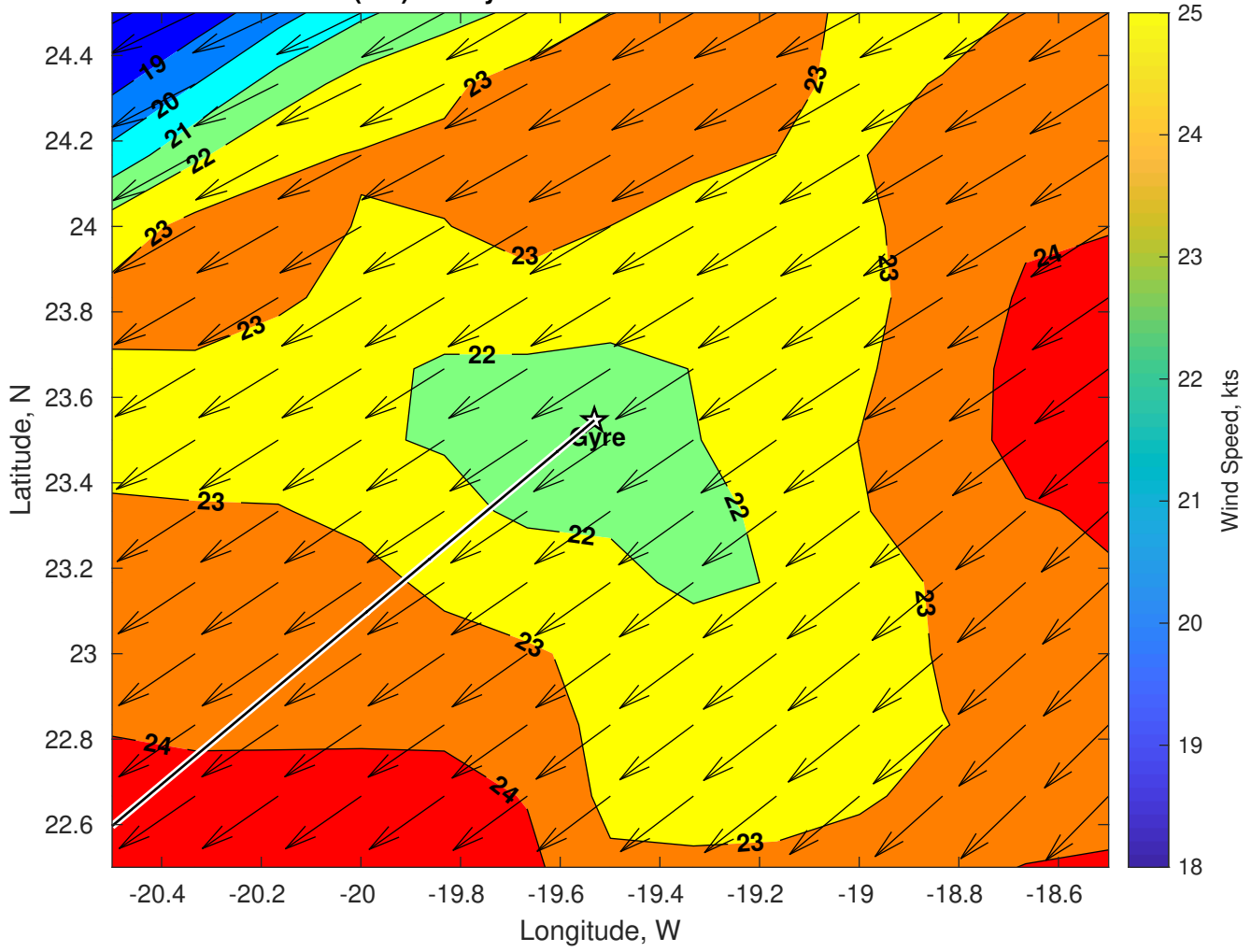
Wave Height (ft) for Gyre at 31-Jan-2025 21:00:00



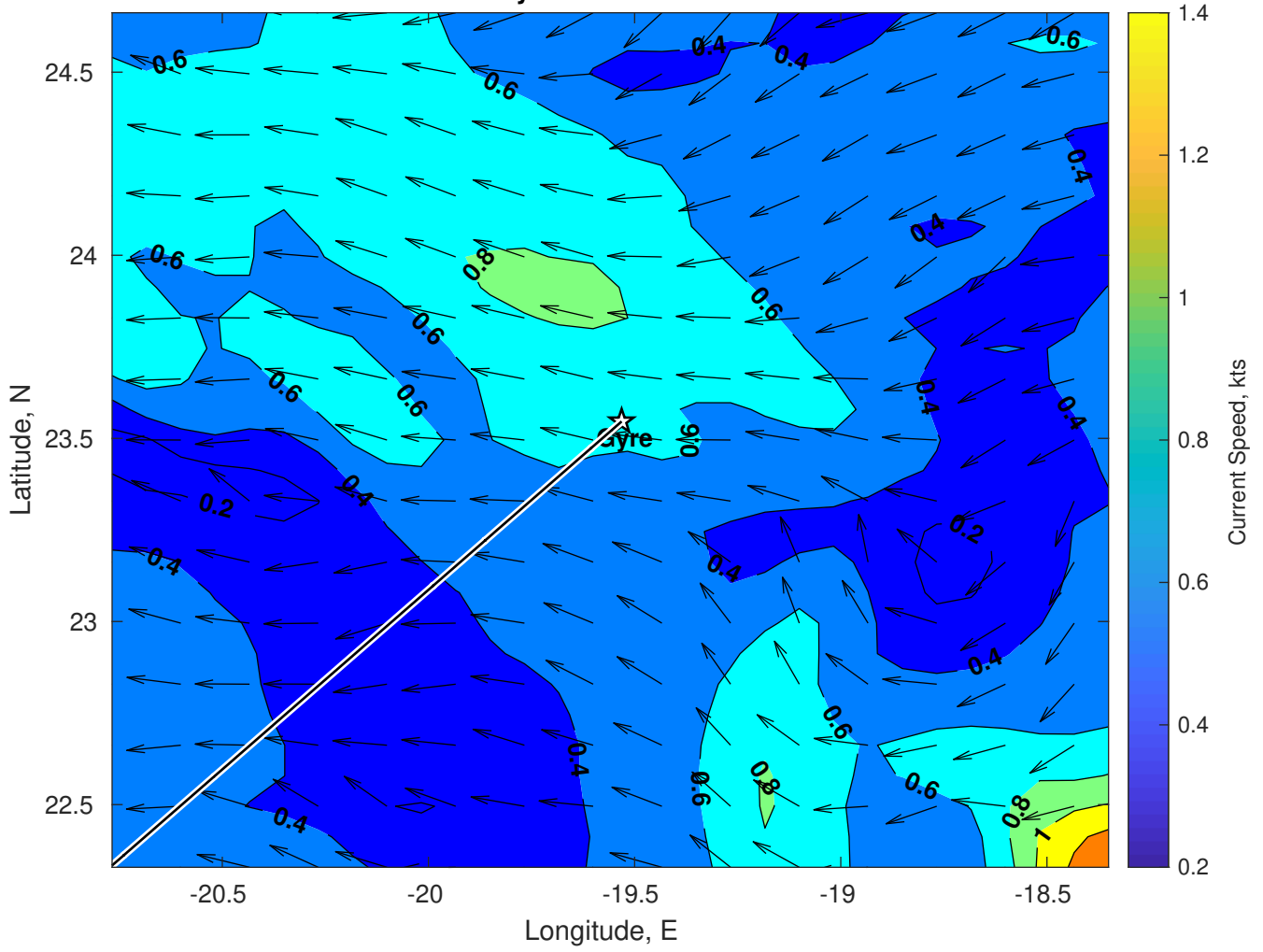
Wave Period (sec) for Gyre at 31-Jan-2025 21:00:00



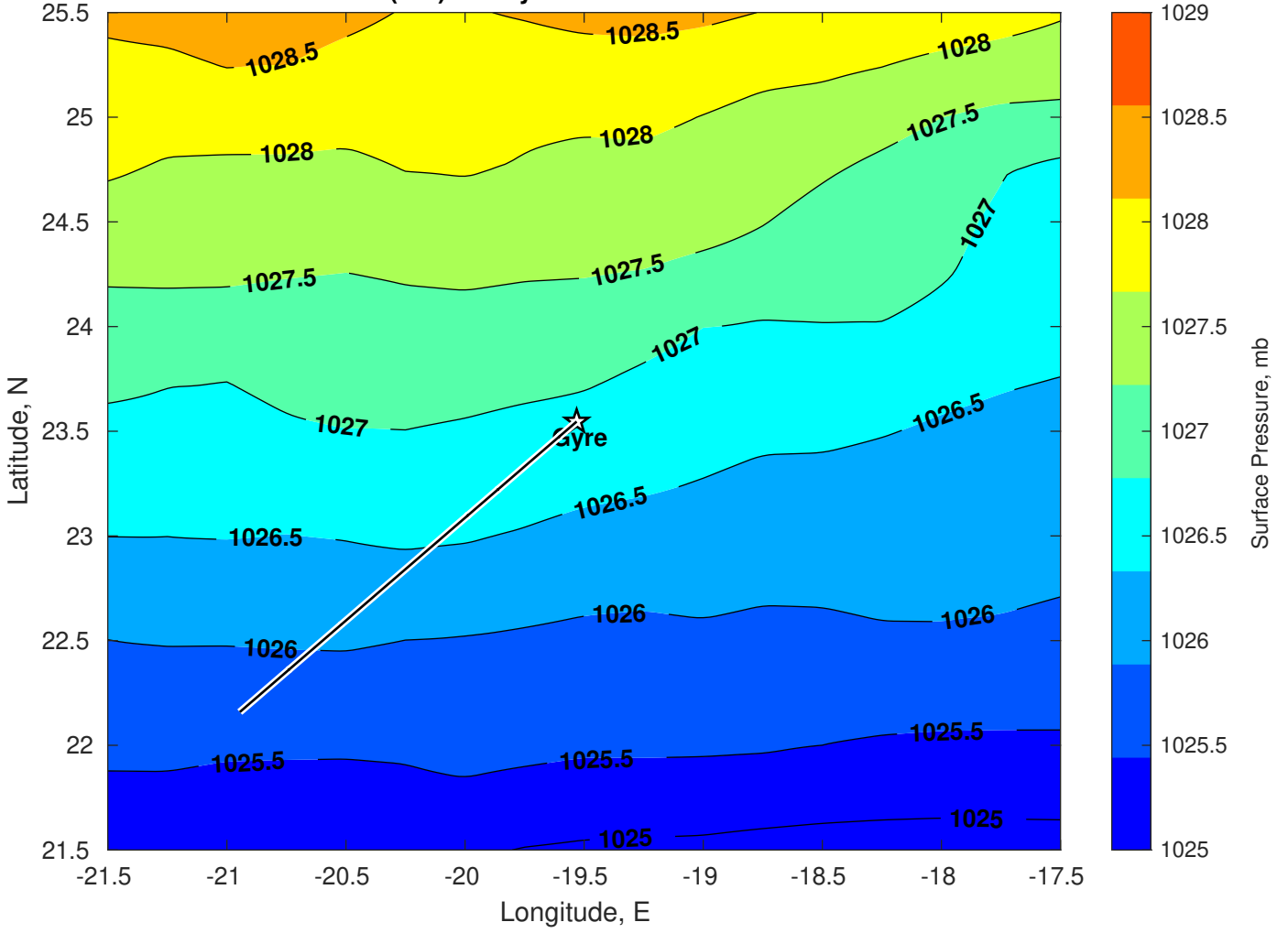
Winds (kts) for Gyre at 31-Jan-2025 21:00:00



Surface Currents for Gyre at 31-Jan-2025 00:00:00

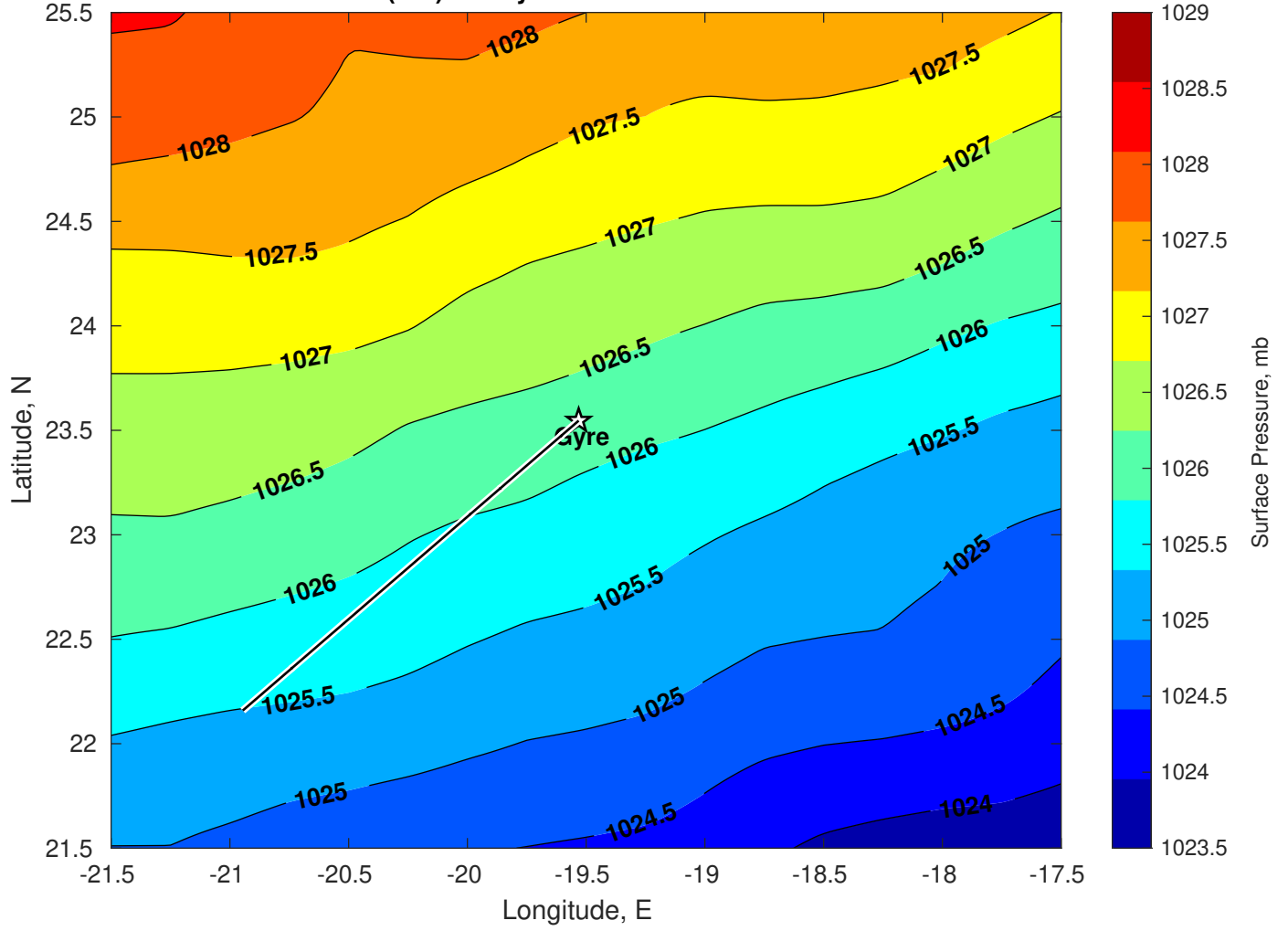


Surface Pressure (mb) for Gyre at 31-Jan-2025 12:00:00

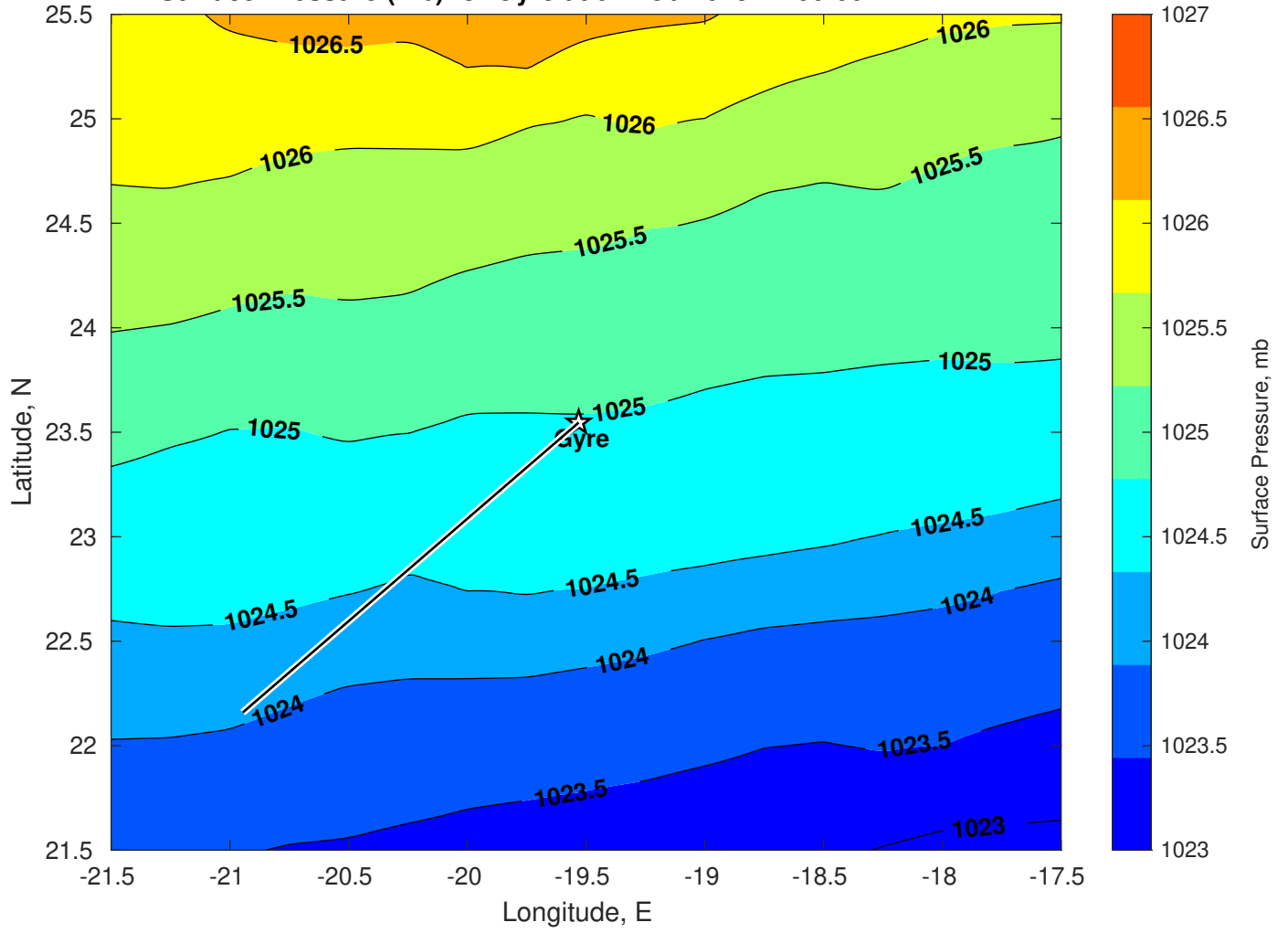




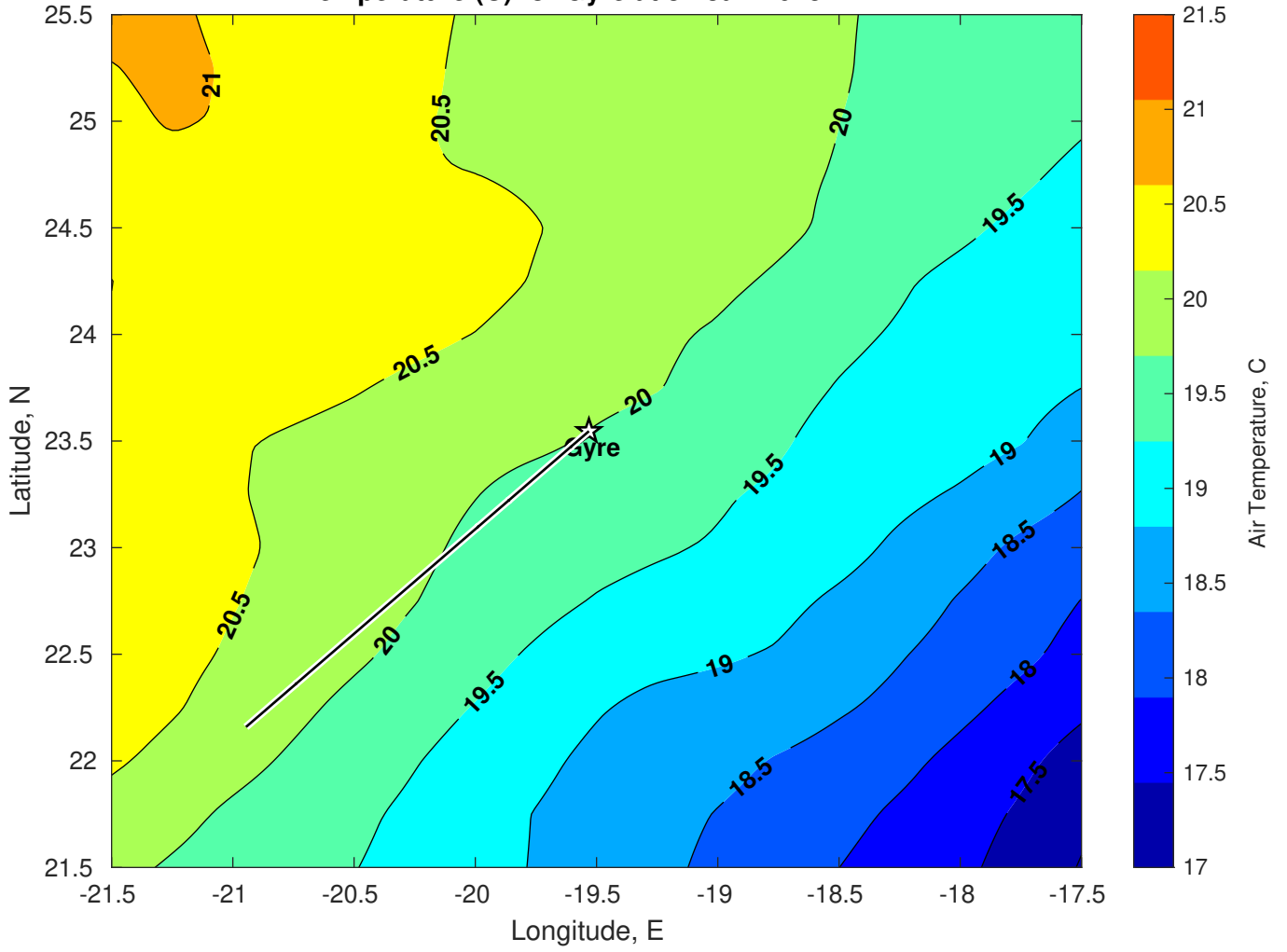
Surface Pressure (mb) for Gyre at 01-Feb-2025 12:00:00



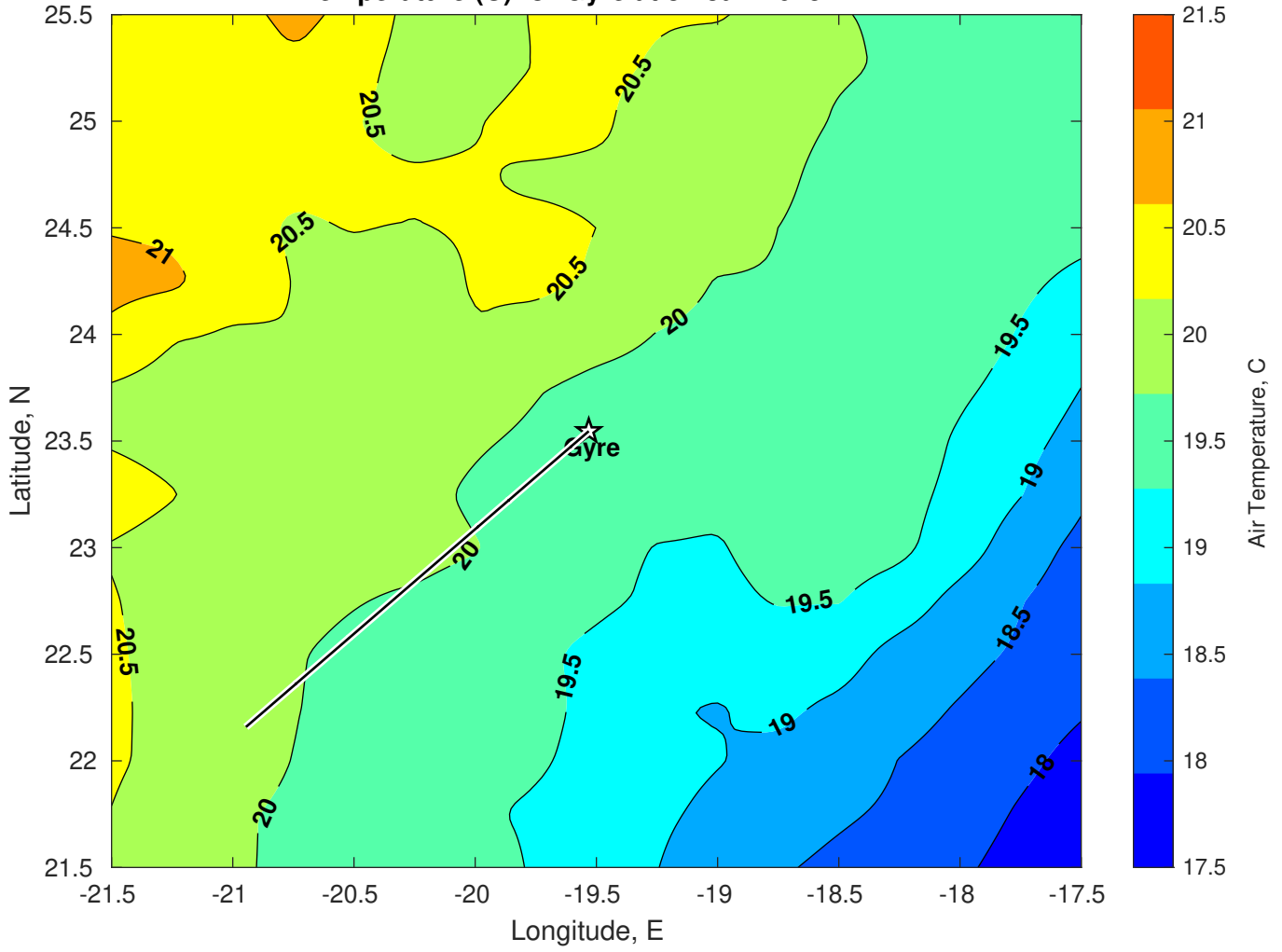
Surface Pressure (mb) for Gyre at 02-Feb-2025 12:00:00



Air Temperature (C) for Gyre at 31-Jan-2025



Air Temperature (C) for Gyre at 31-Jan-2025



Air Temperature (C) for Gyre at 31-Jan-2025

