

\*\*\*\*\*  
Marine Weather Forecast for Nautilus  
Forecast valid as of 05-Feb-2025 0900 GMT  
\*\*\*\*\*

All times are local.

Today

Winds: NE, 20-25 kts.  
Waves: NW, 12-13 feet, 16-17 sec.  
No currents available.

Tonight

Winds: NE, 20-25 kts.  
Waves: NW, 12-13 feet, 15-16 sec.  
No currents available.

Thursday

Winds: NE, 20-25 kts.  
Waves: NW, 12-13 feet, 14-15 sec.  
No currents available.

Thursday Night

Winds: NE, 20-25 kts.  
Waves: NW, 11-12 feet, 12-13 sec.  
No currents available.

Friday

Winds: NE, 15-20 kts.  
Waves: NW, 9-10 feet, 11-12 sec.  
No currents available.

Friday Night

Winds: NE, 15-20 kts.  
Waves: NW, 7-8 feet, 11-12 sec.  
No currents available.

Saturday

Winds: NE, 15-20 kts.  
Waves: NW, 6-7 feet, 10-11 sec.  
No currents available.

Saturday Night

Winds: NE, 20-25 kts.  
Waves: NW, 7-8 feet, 11-12 sec.  
No currents available.

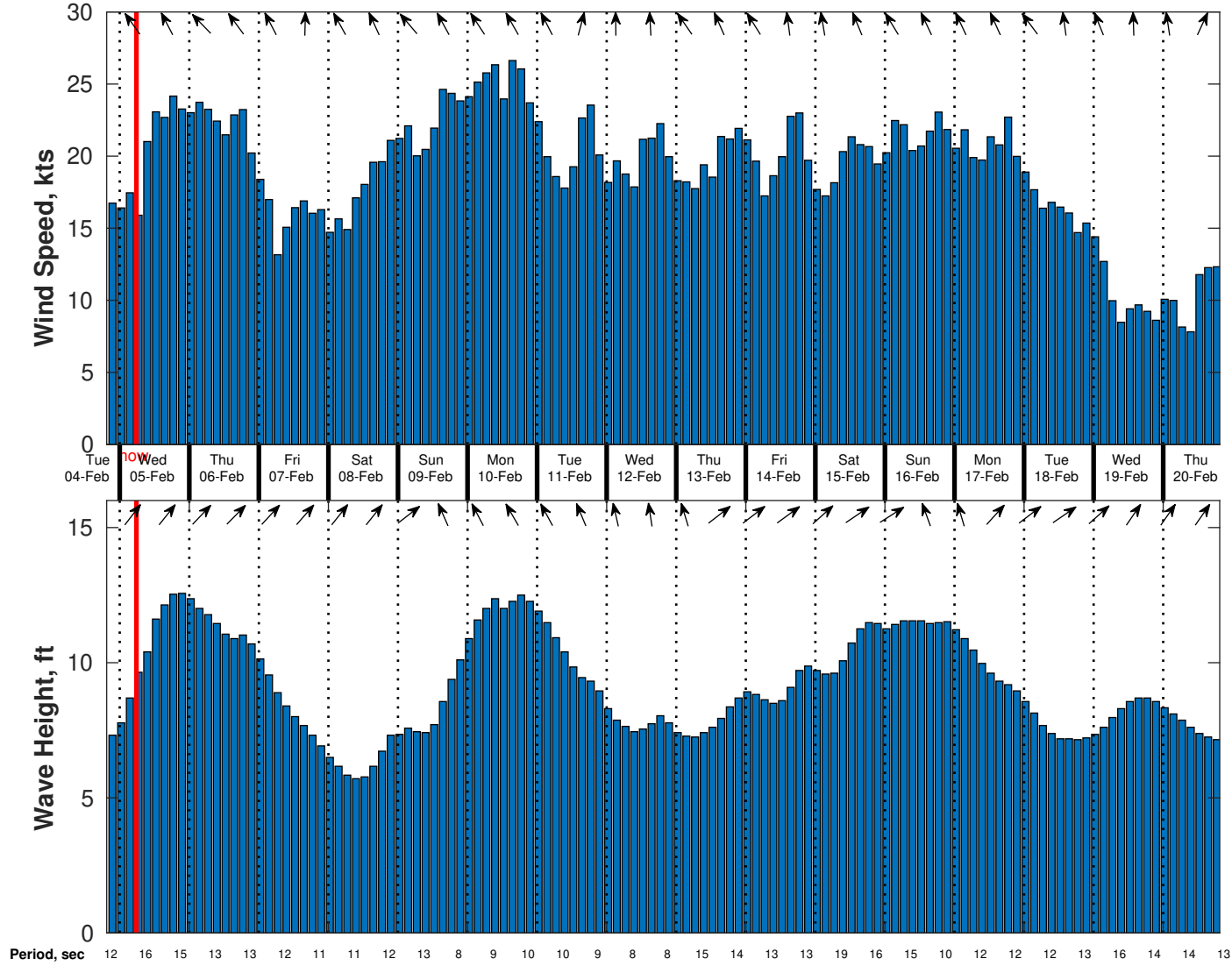
Sunday

Winds: NE, 20-25 kts.  
Waves: N, 8-9 feet, 13-14 sec.  
No currents available.

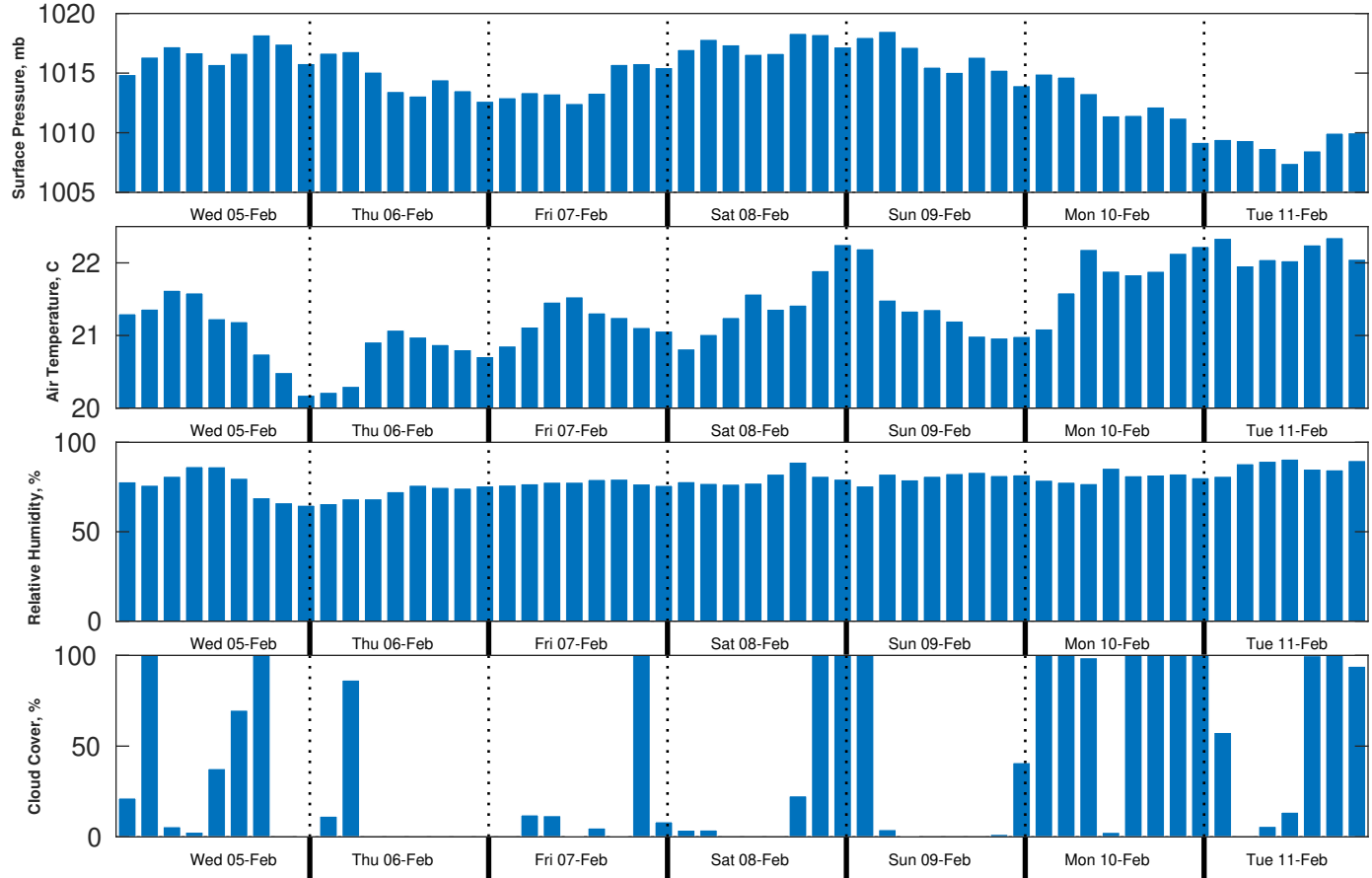
Sunday Night

Winds: NE, 20-25 kts.  
Waves: N, 10-11 feet, 8-9 sec.  
No currents available.

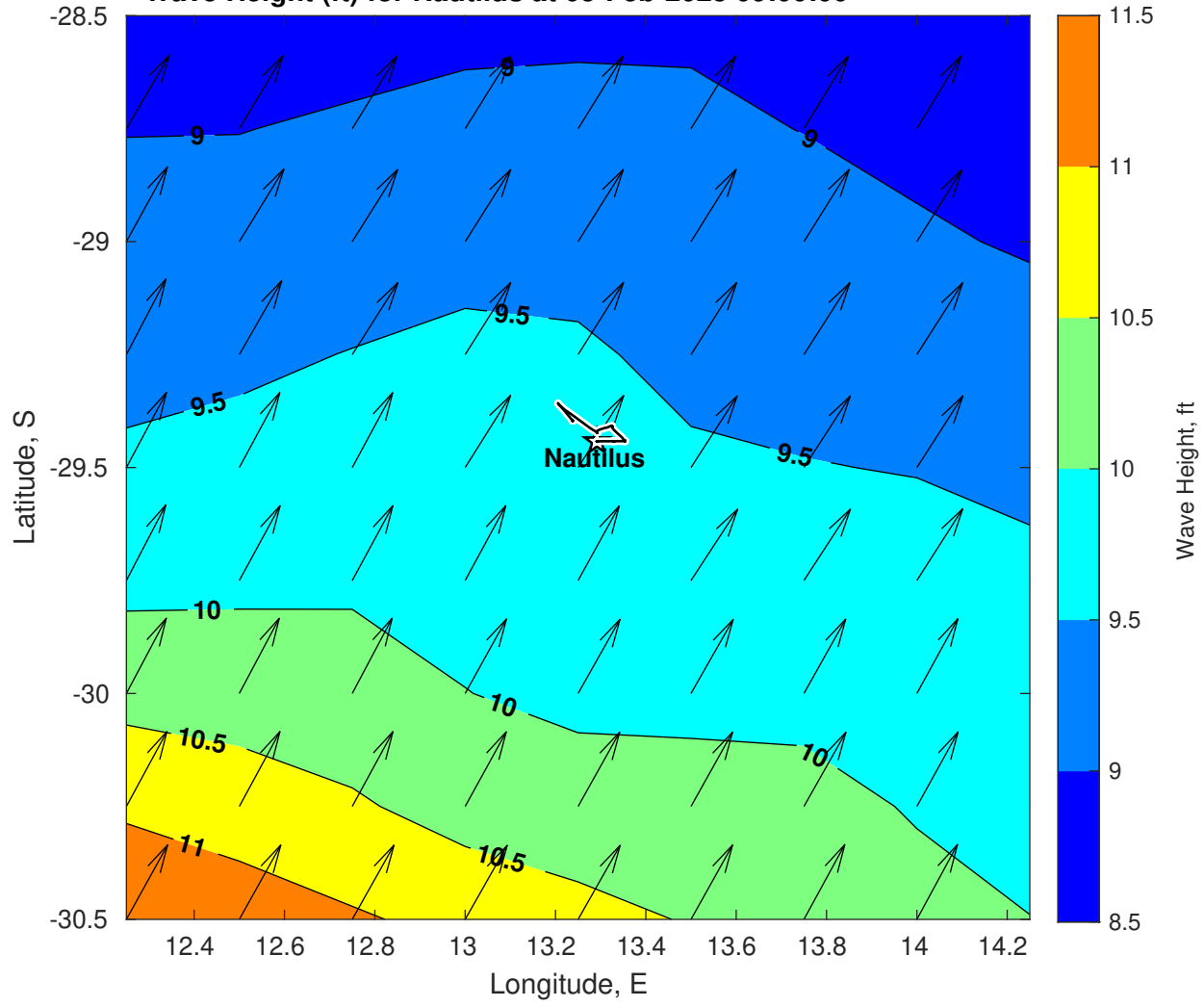
Wind & Wave Forecast for Nautilus from 04-Feb-2025 20:00:00 to 20-Feb-2025 20:00:00



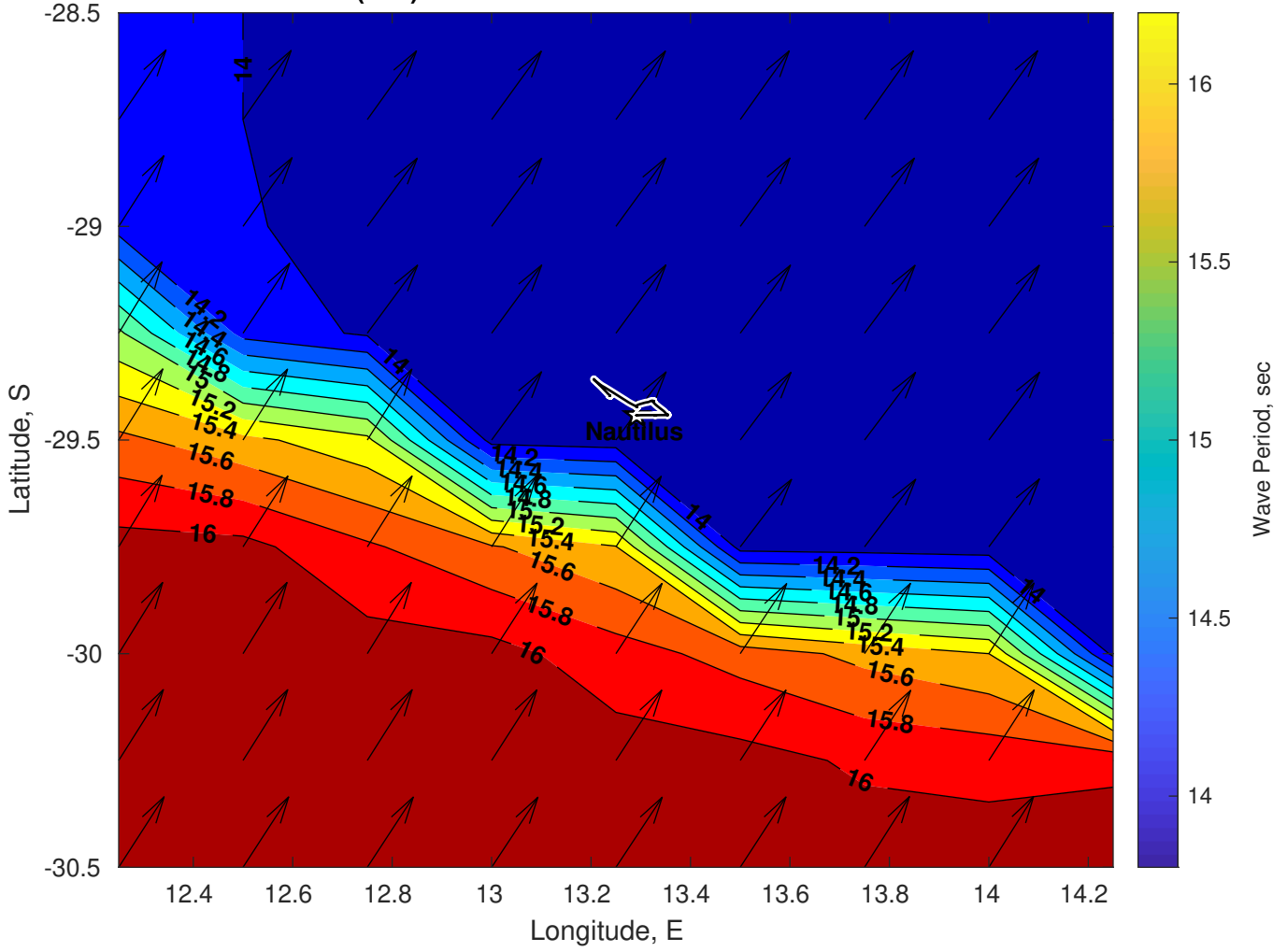
### Met Forecast for Nautilus from 05-Feb-2025 00:00:00 to 12-Feb-2025 00:00:00



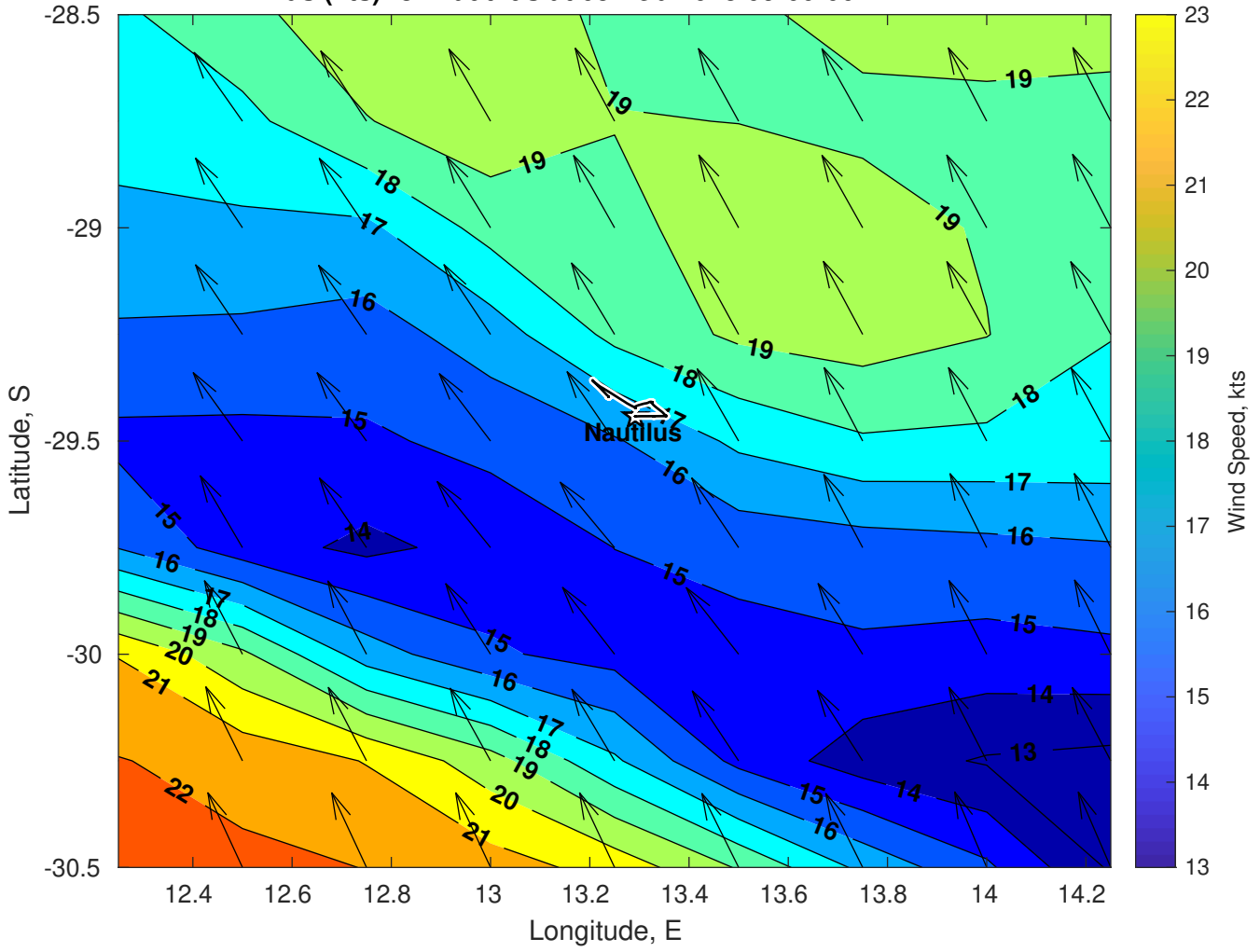
Wave Height (ft) for Nautilus at 05-Feb-2025 09:00:00



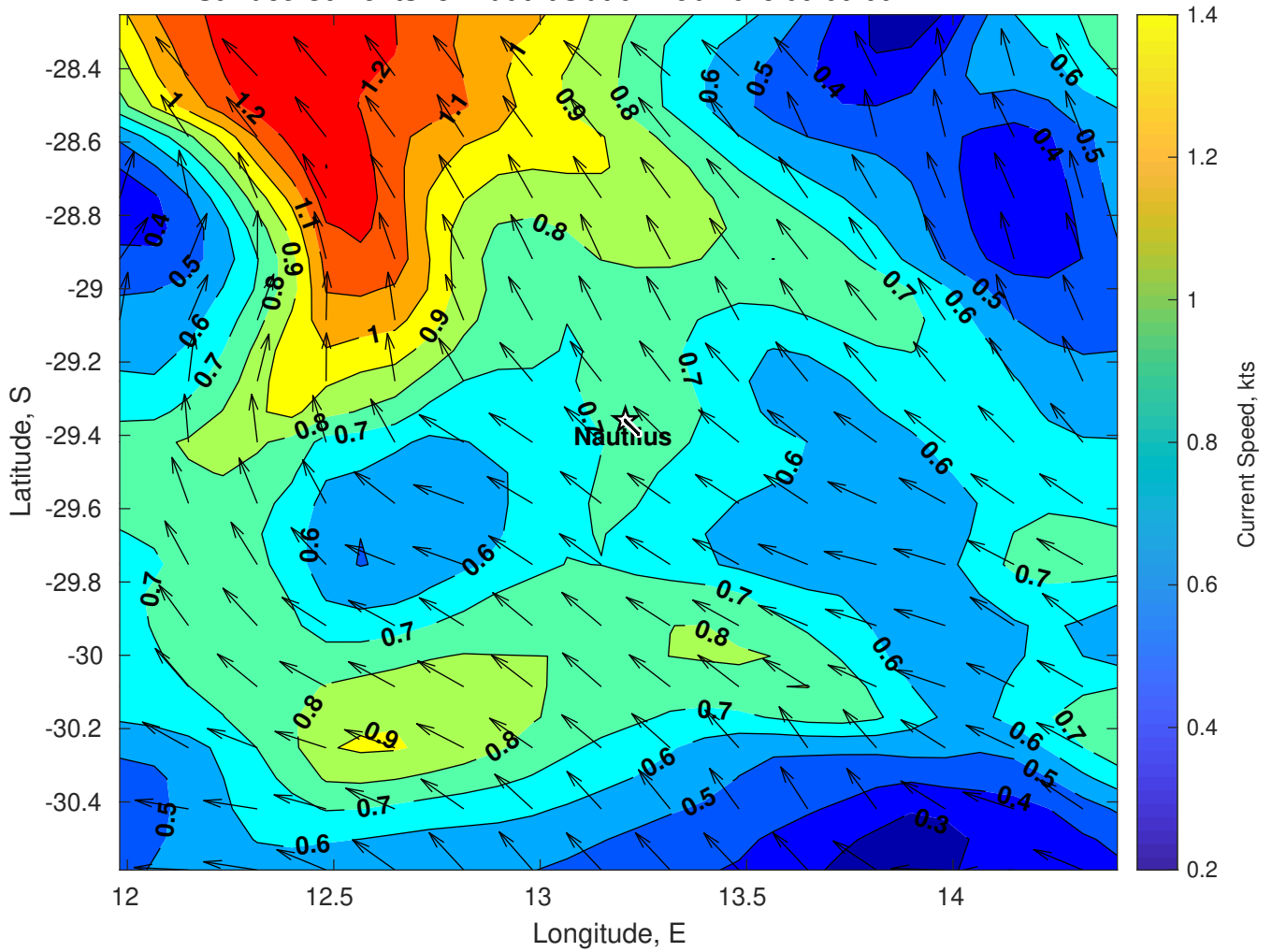
Wave Period (sec) for Nautilus at 05-Feb-2025 09:00:00



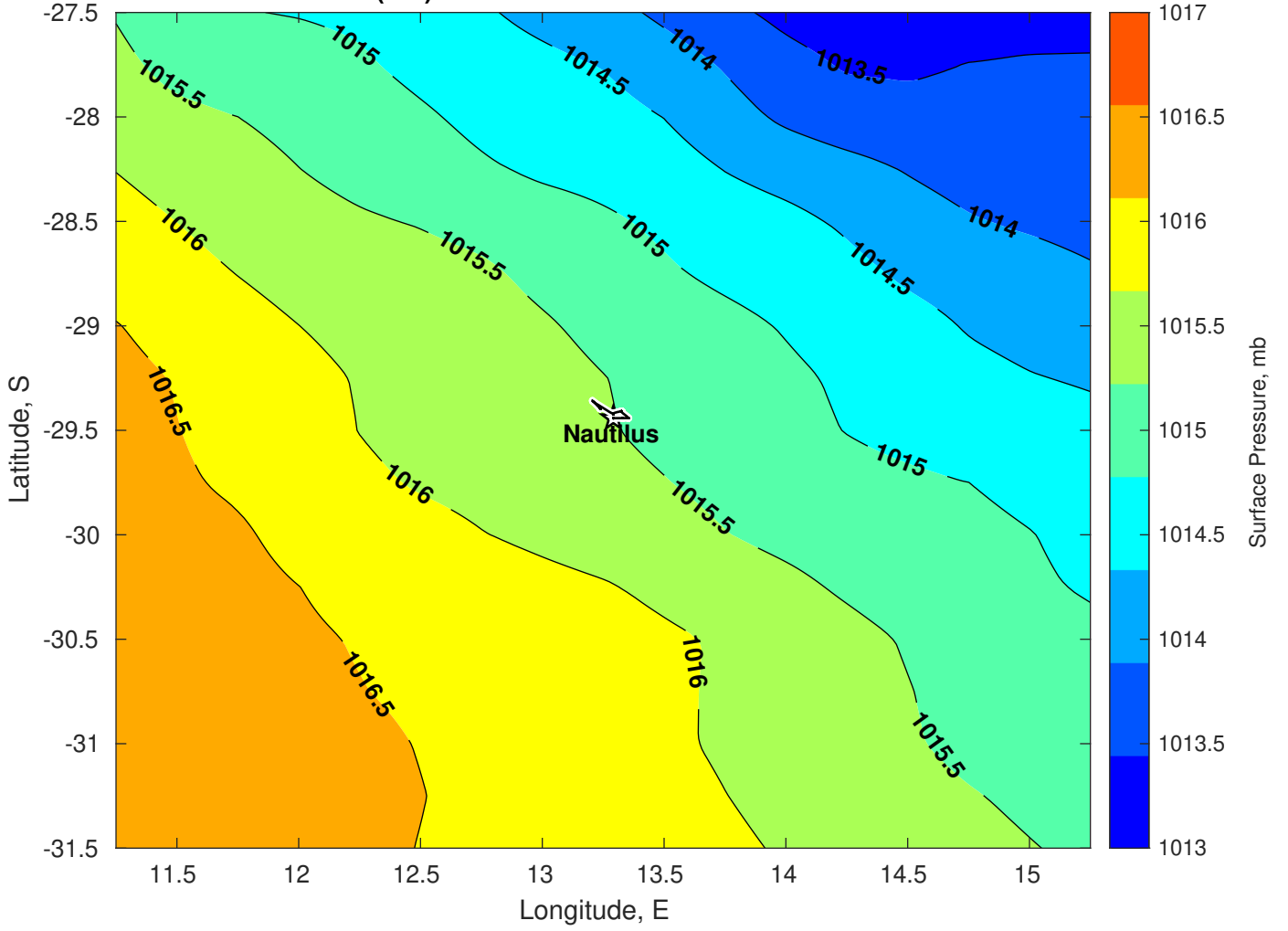
Winds (kts) for Nautilus at 05-Feb-2025 09:00:00



Surface Currents for Nautilus at 04-Feb-2025 00:00:00

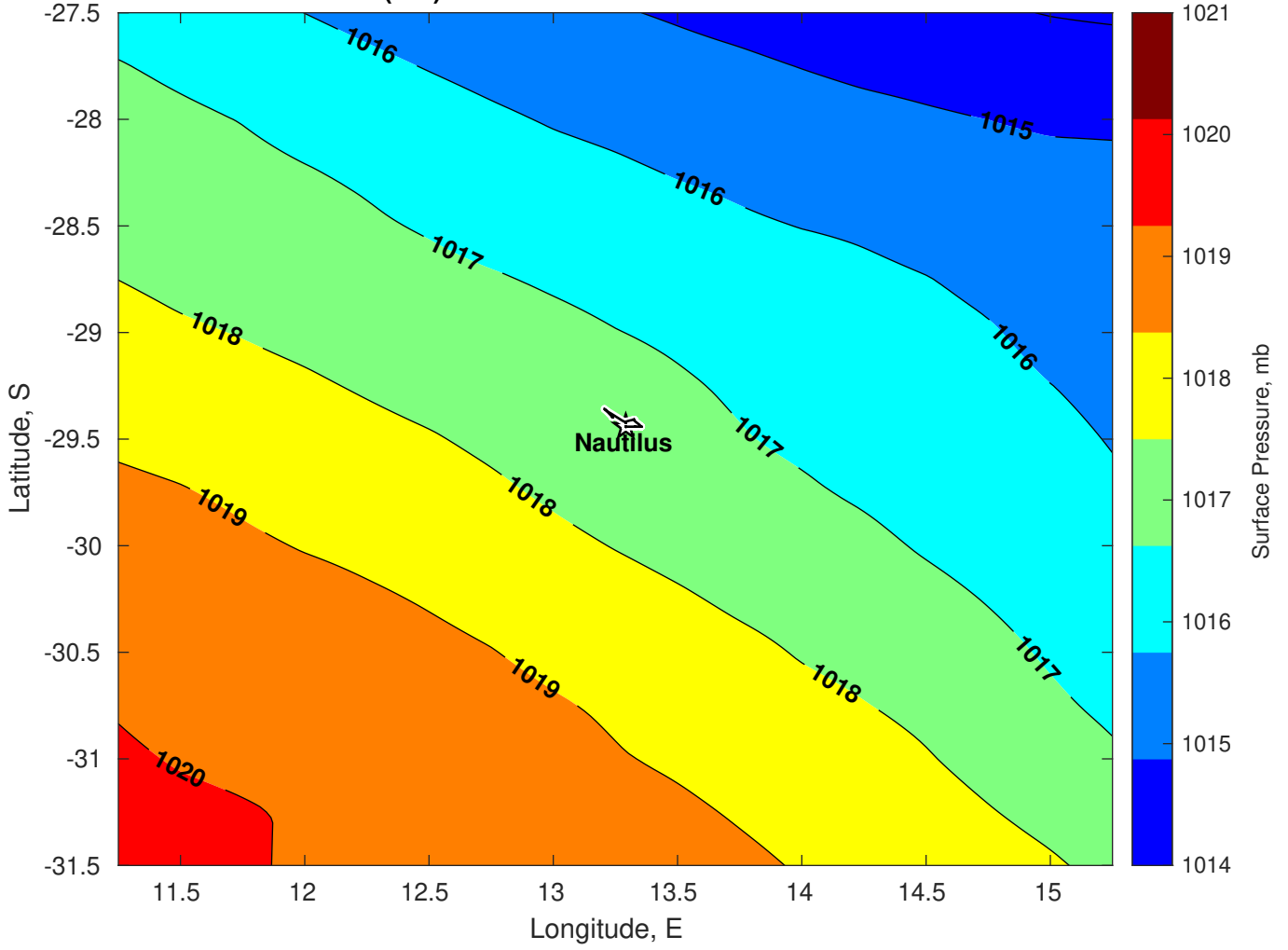


Surface Pressure (mb) for Nautilus at 05-Feb-2025 00:00:00

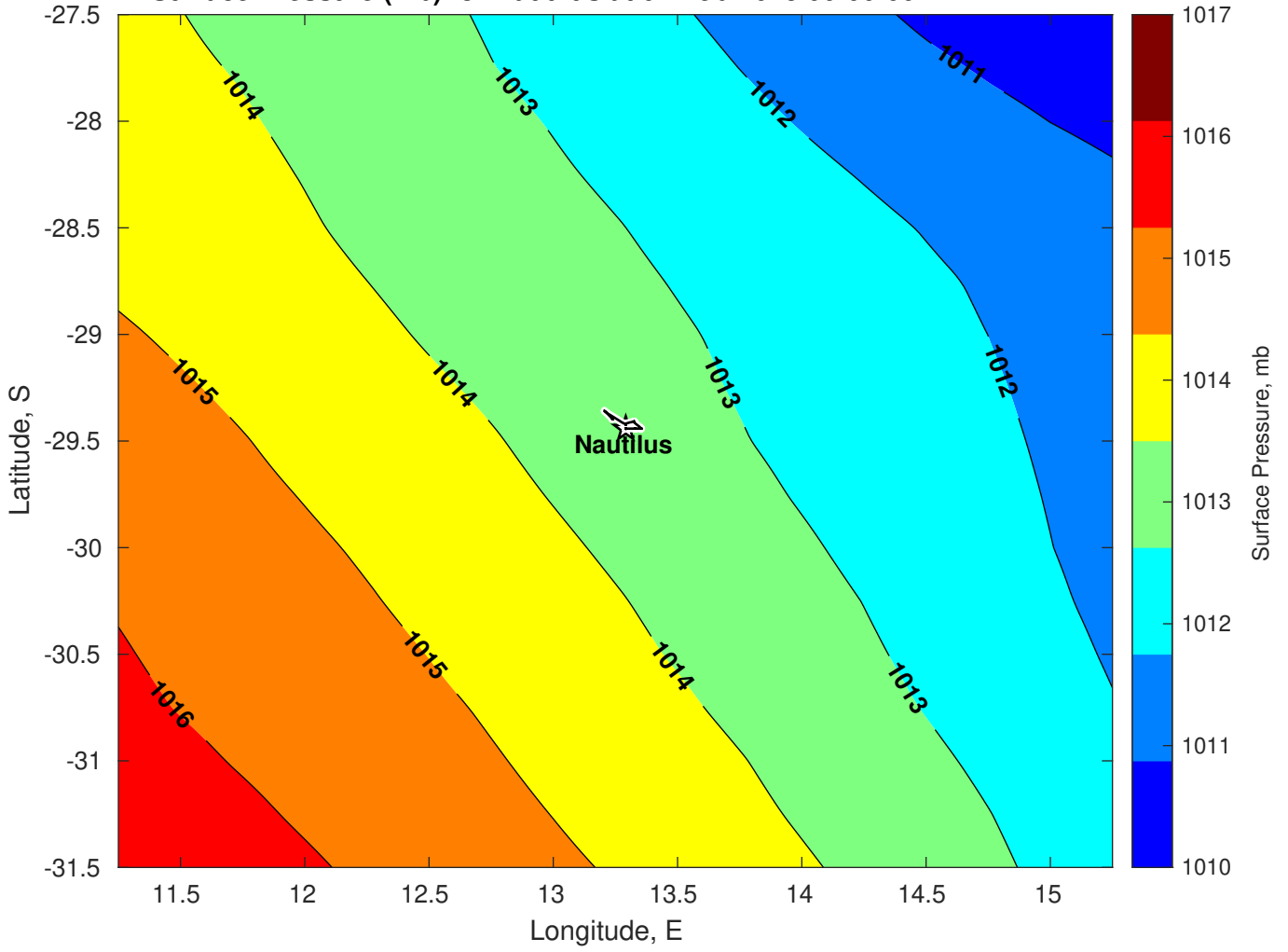




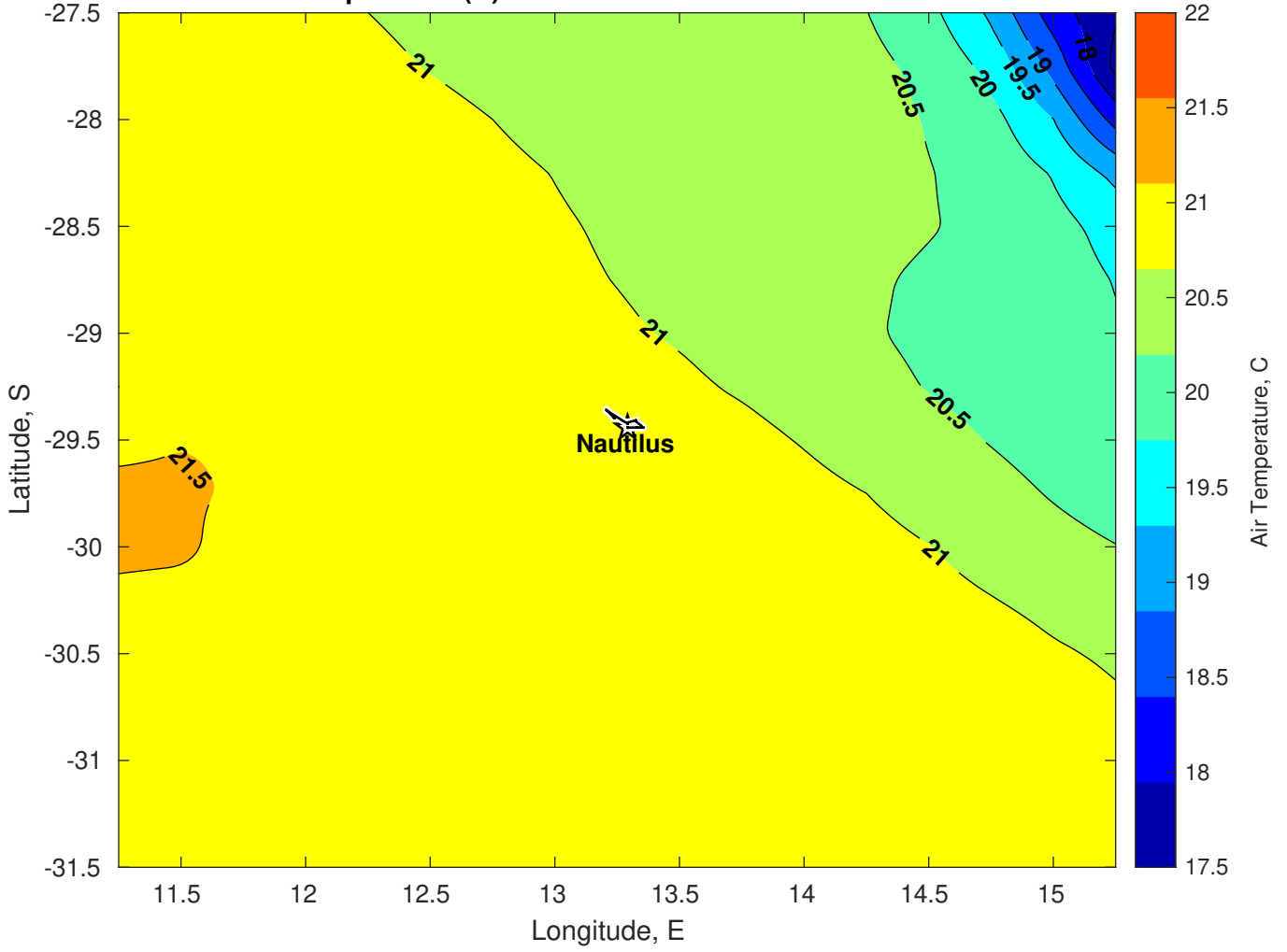
Surface Pressure (mb) for Nautilus at 06-Feb-2025 00:00:00



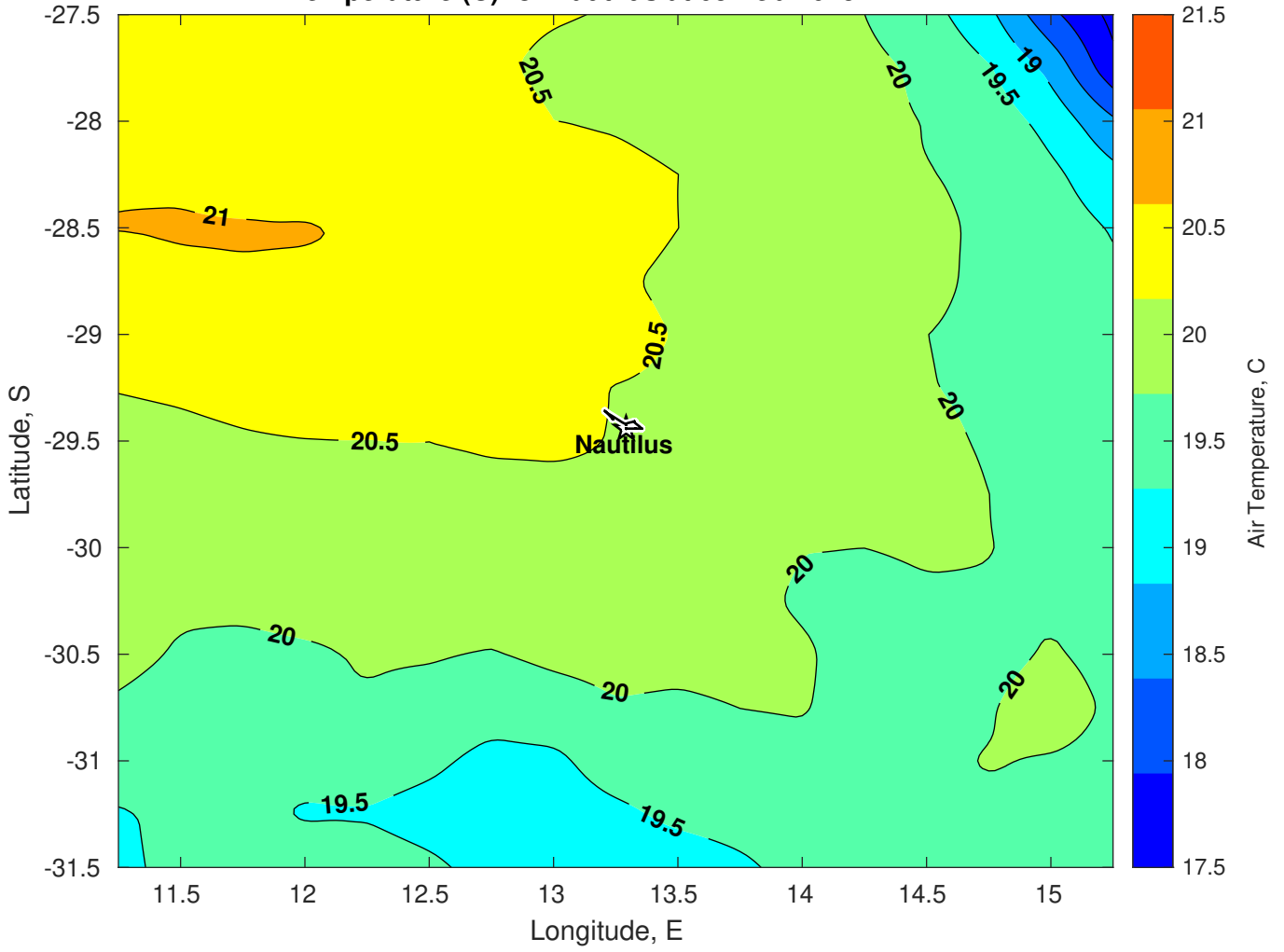
Surface Pressure (mb) for Nautilus at 07-Feb-2025 00:00:00



Air Temperature (C) for Nautilus at 05-Feb-2025



Air Temperature (C) for Nautilus at 05-Feb-2025



**Air Temperature (C) for Nautilus at 05-Feb-2025**

