

\*\*\*\*\*  
Marine Weather Forecast for Nautilus  
Forecast valid as of 09-Feb-2025 0900 GMT  
\*\*\*\*\*

All times are local.

Today

Winds: NE, 20-25 kts.  
Waves: N, 8-9 feet, 11-12 sec.  
No currents available.

Tonight

Winds: NE, 20-25 kts.  
Waves: N, 10-11 feet, 7-8 sec.  
No currents available.

Monday

Winds: NE, 25-30 kts.  
Waves: N, 11-12 feet, 13-14 sec.  
No currents available.

Monday Night

Winds: NE, 25-30 kts.  
Waves: NE, 12-13 feet, 8-9 sec.  
No currents available.

Tuesday

Winds: NE, 25-30 kts.  
Waves: NE, 11-12 feet, 9-10 sec.  
No currents available.

Tuesday Night

Winds: N, 20-25 kts.  
Waves: NE, 10-11 feet, 8-9 sec.  
No currents available.

Wednesday

Winds: N, 15-20 kts.  
Waves: NE, 8-9 feet, 8-9 sec.  
No currents available.

Wednesday Night

Winds: NE, 15-20 kts.  
Waves: NW, 6-7 feet, 10-11 sec.  
No currents available.

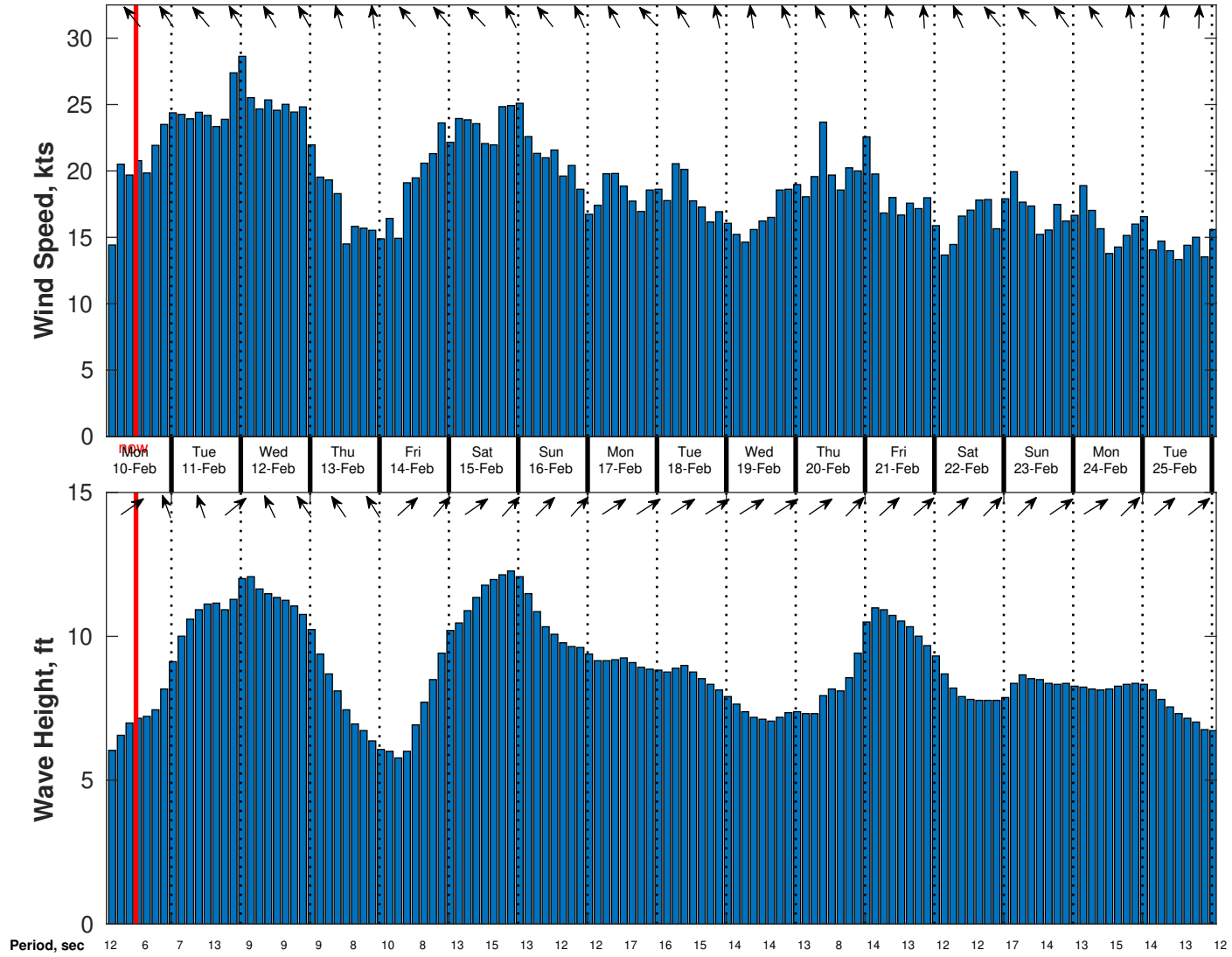
Thursday

Winds: NE, 20-25 kts.  
Waves: N, 9-10 feet, 14-15 sec.  
No currents available.

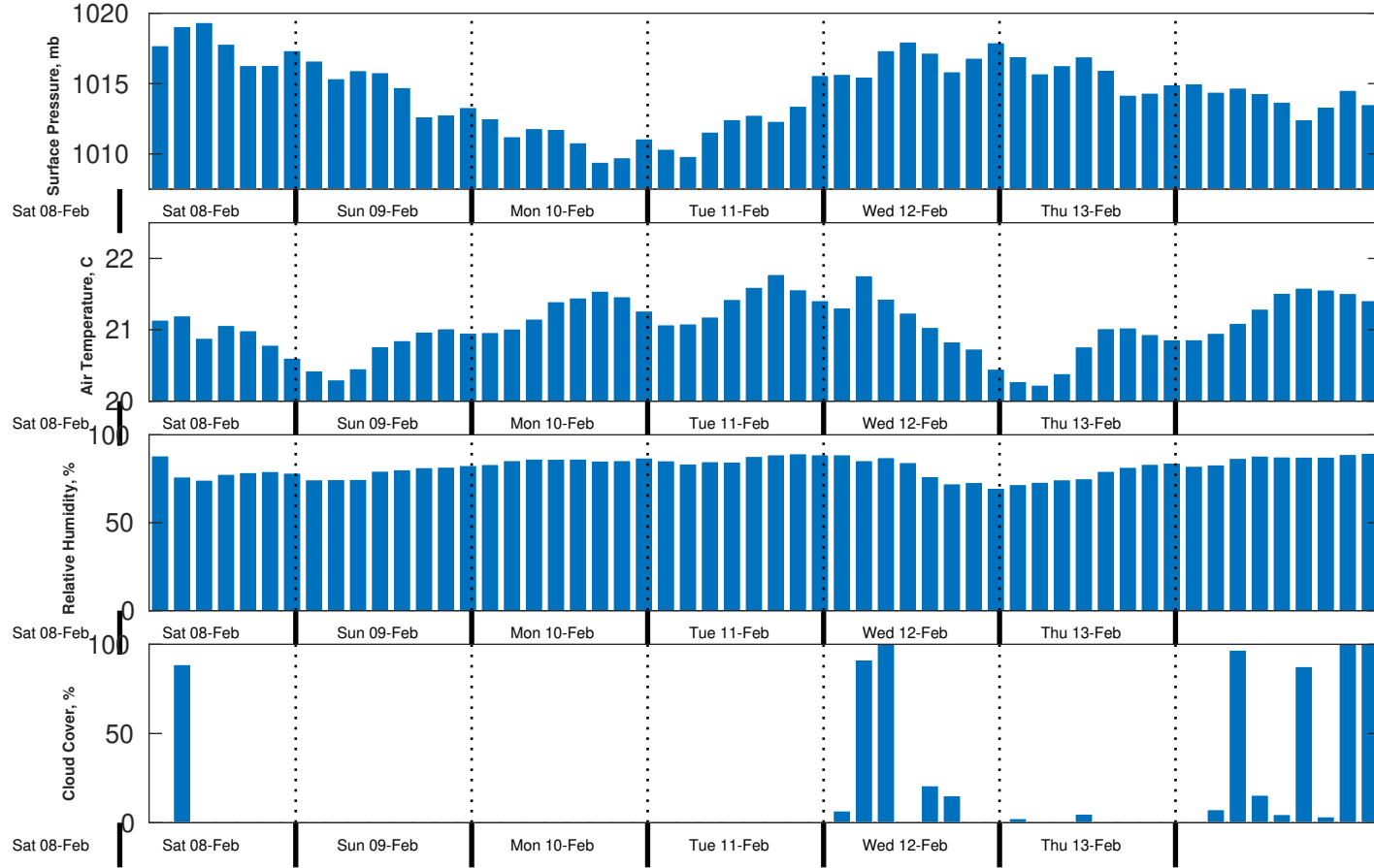
Thursday Night

Winds: NE, 20-25 kts.  
Waves: NW, 10-11 feet, 13-14 sec.  
No currents available.

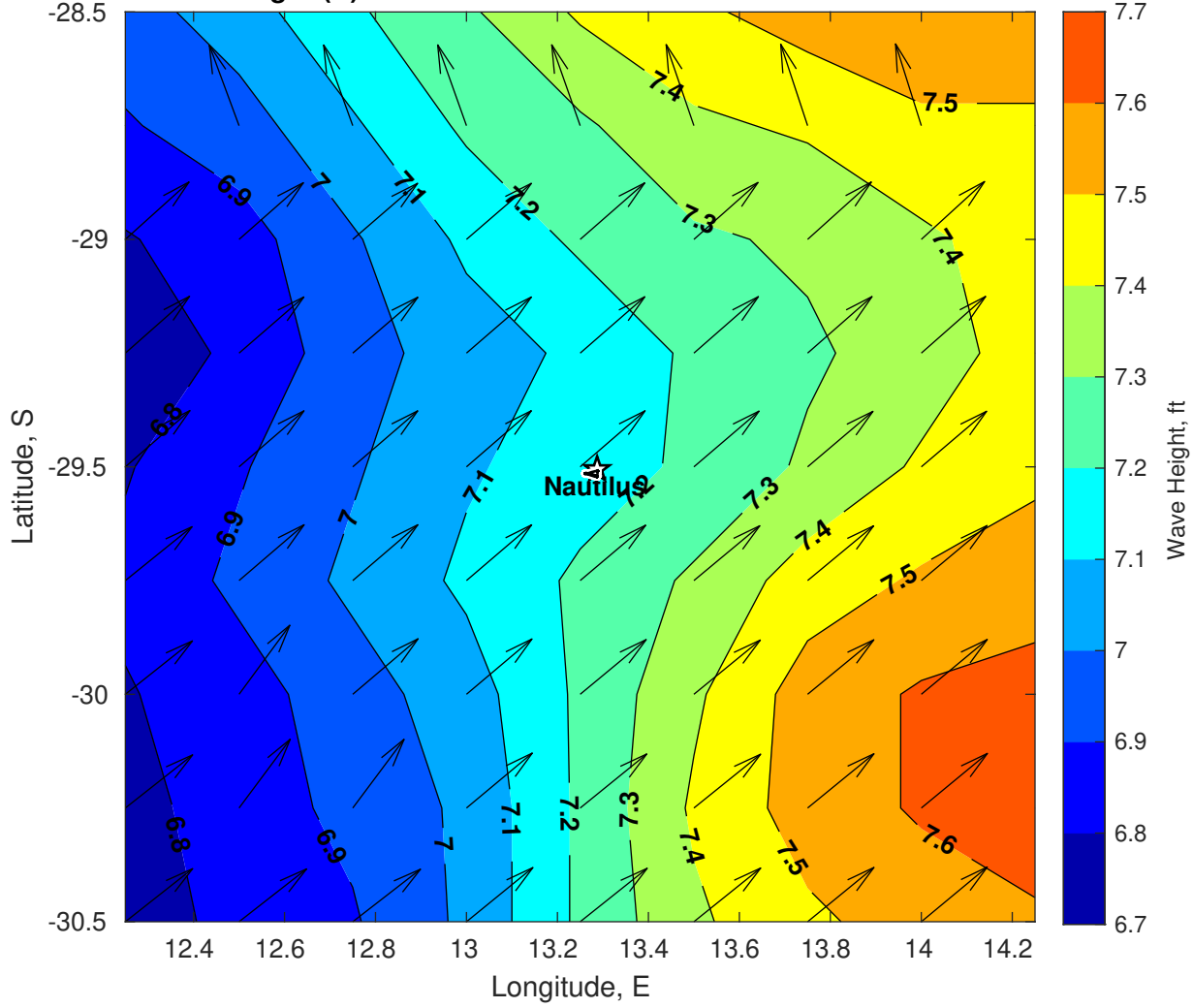
Wind & Wave Forecast for Nautilus from 09-Feb-2025 02:00:00 to 25-Feb-2025 02:00:00



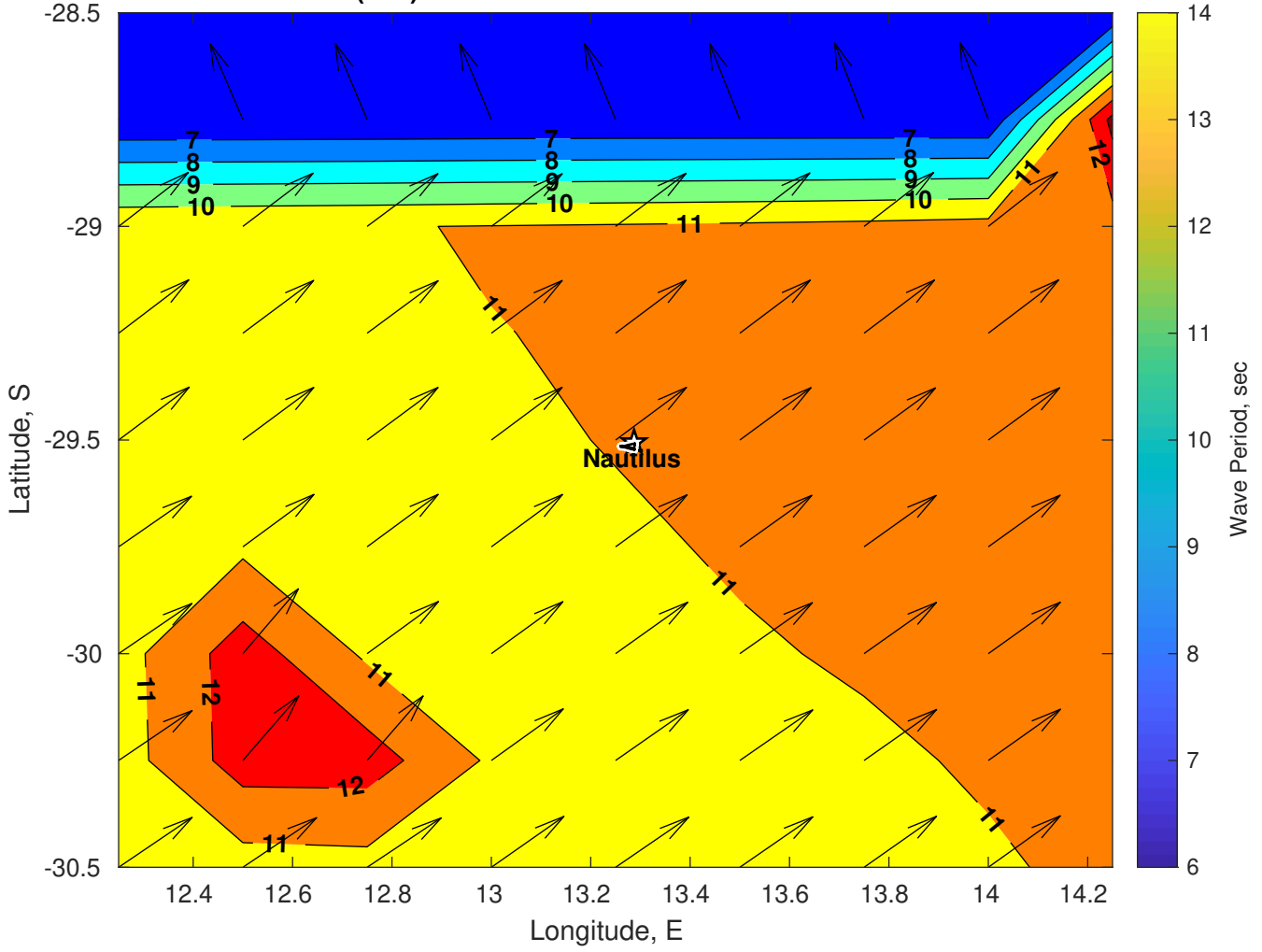
### Met Forecast for Nautilus from 09-Feb-2025 00:00:00 to 16-Feb-2025 00:00:00



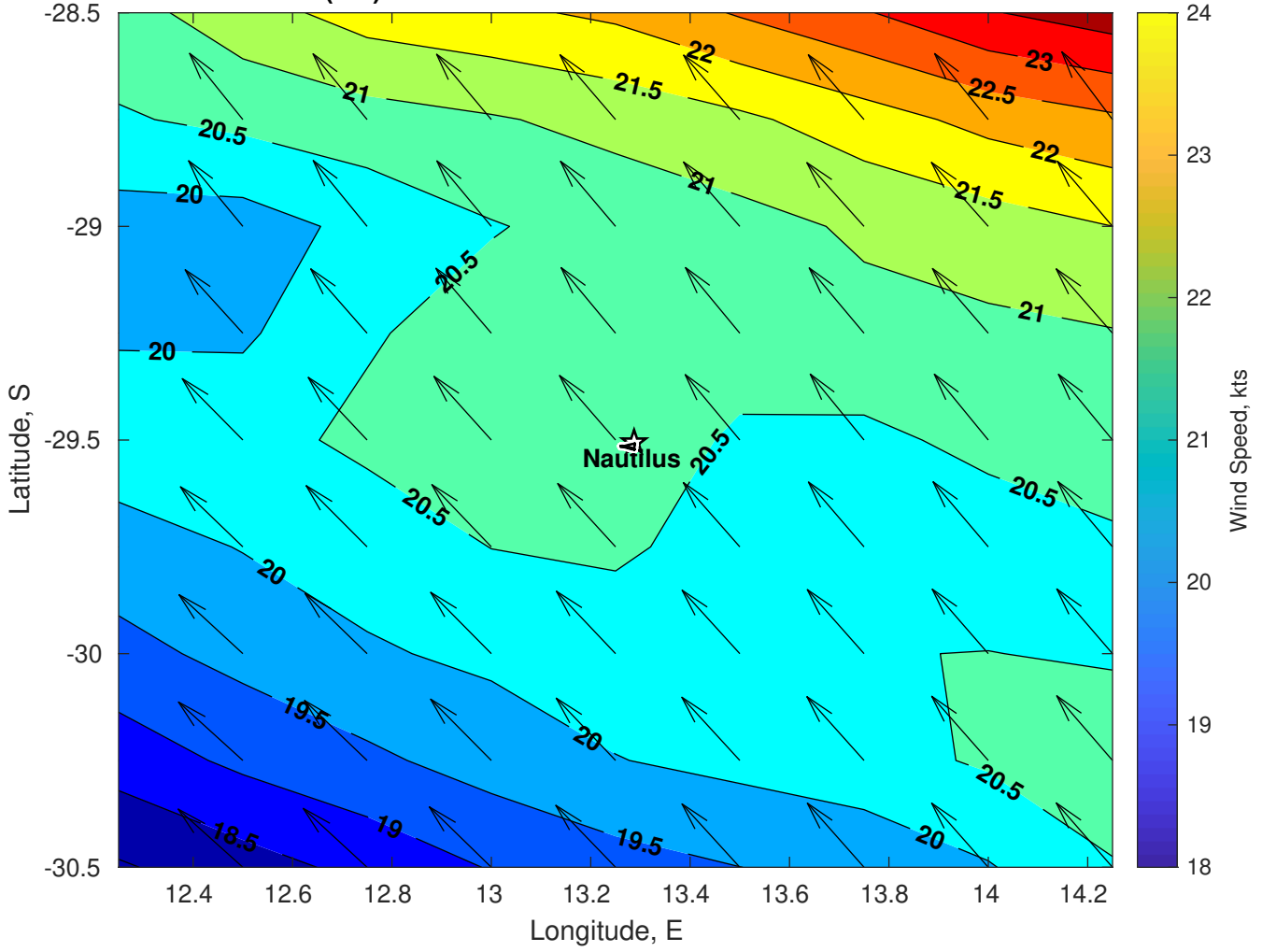
Wave Height (ft) for Nautilus at 09-Feb-2025 09:00:00



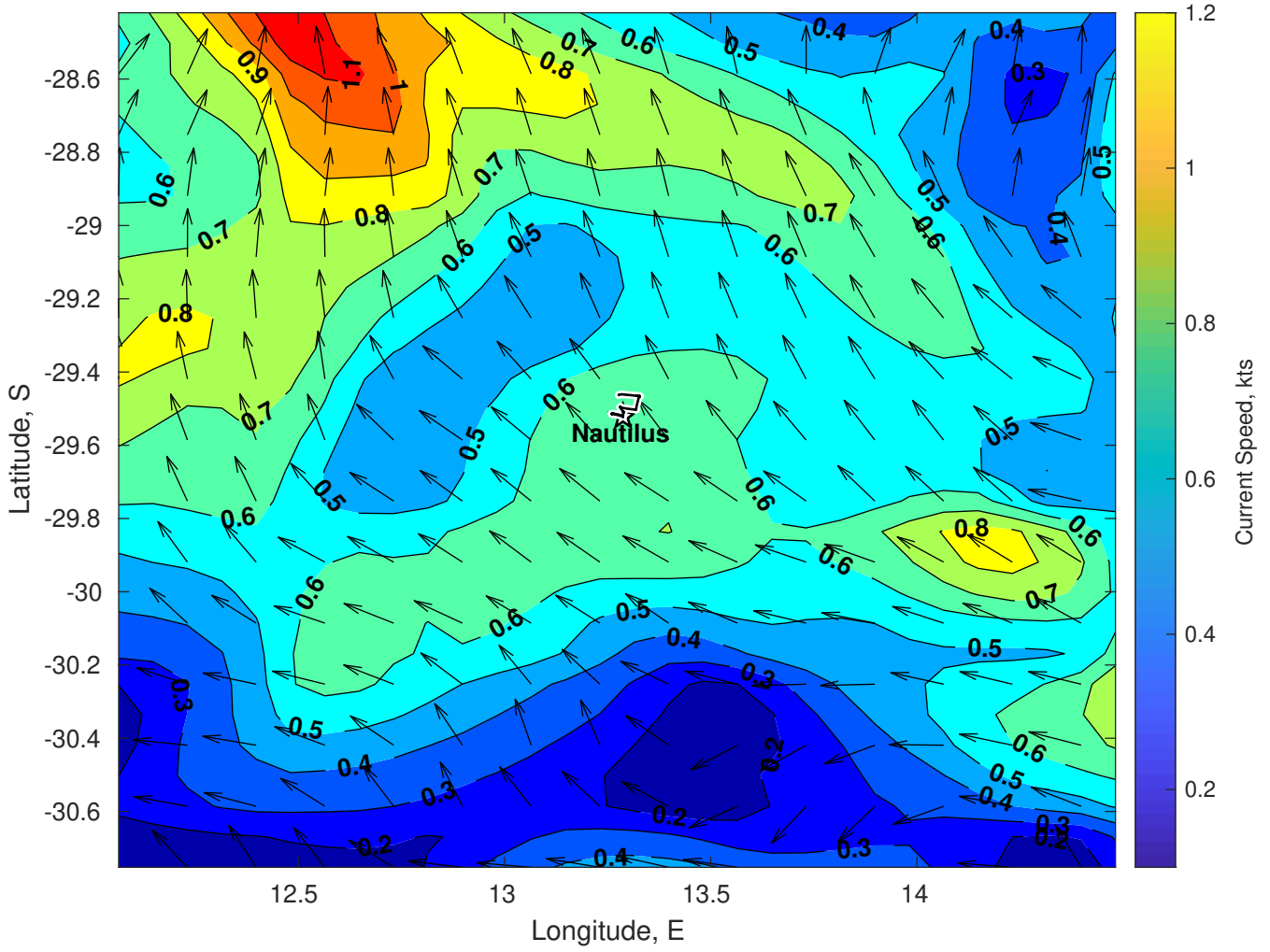
Wave Period (sec) for Nautilus at 09-Feb-2025 09:00:00



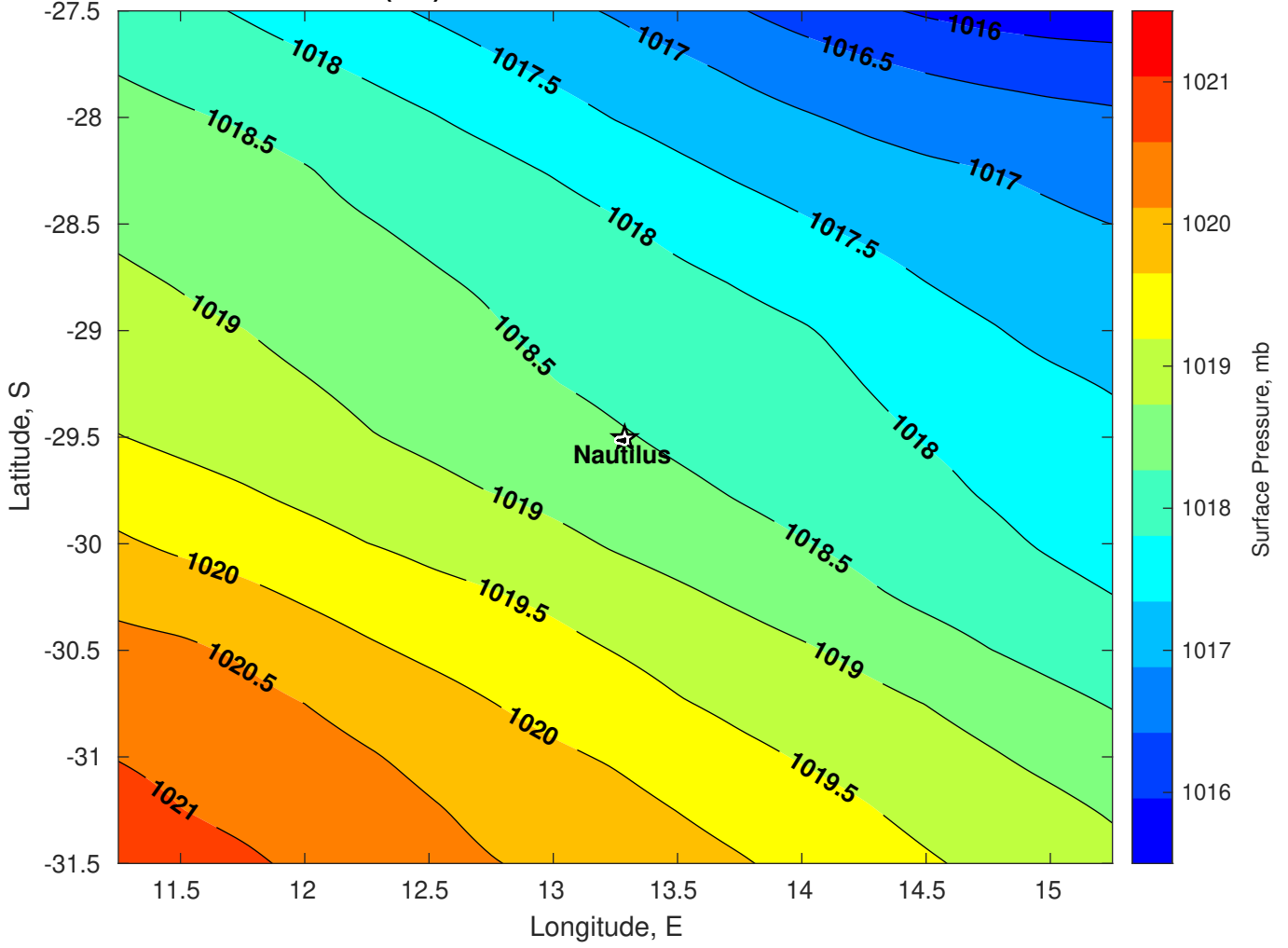
Winds (kts) for Nautilus at 09-Feb-2025 09:00:00



Surface Currents for Nautilus at 08-Feb-2025 00:00:00

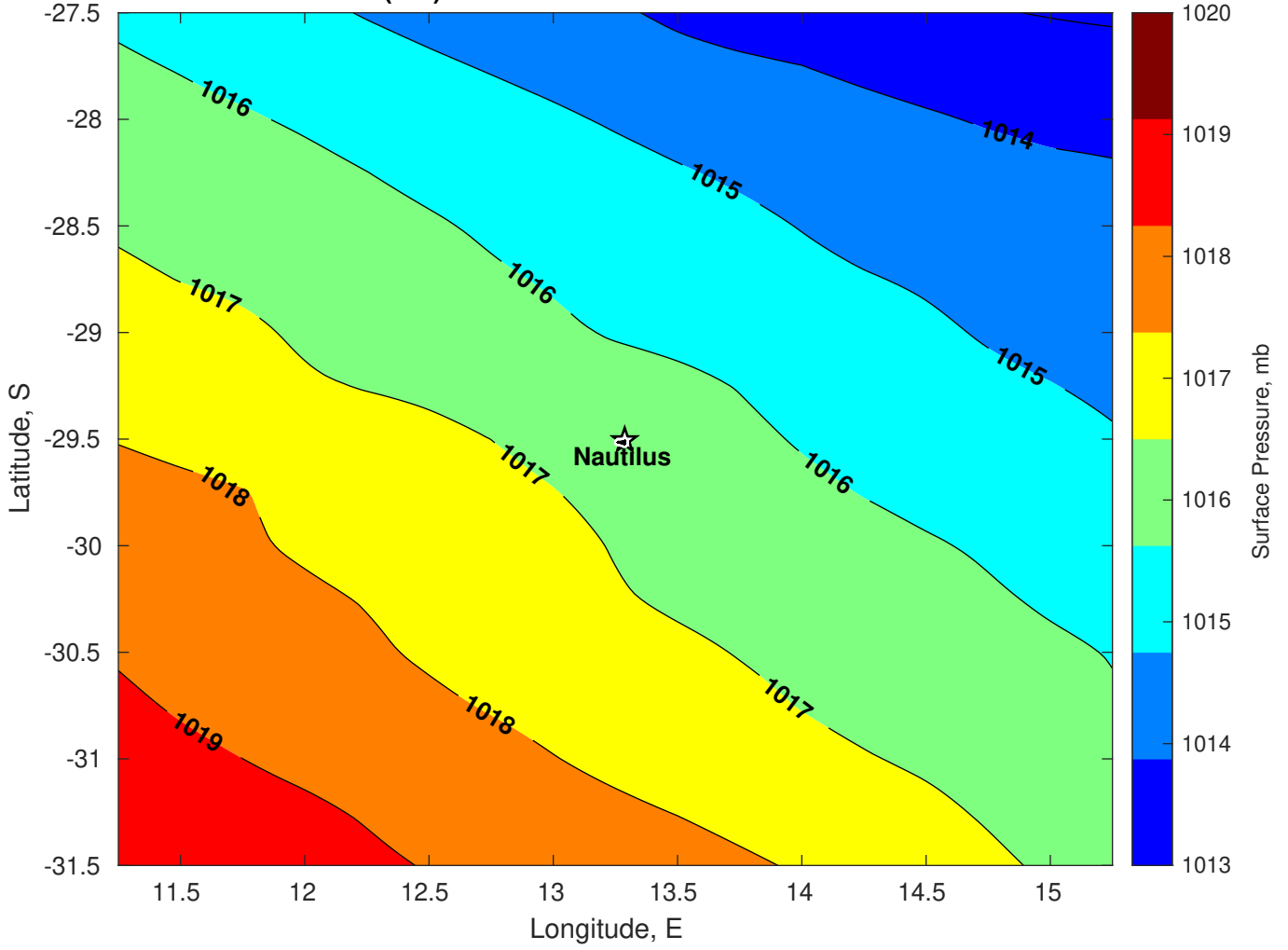


Surface Pressure (mb) for Nautilus at 09-Feb-2025 00:00:00

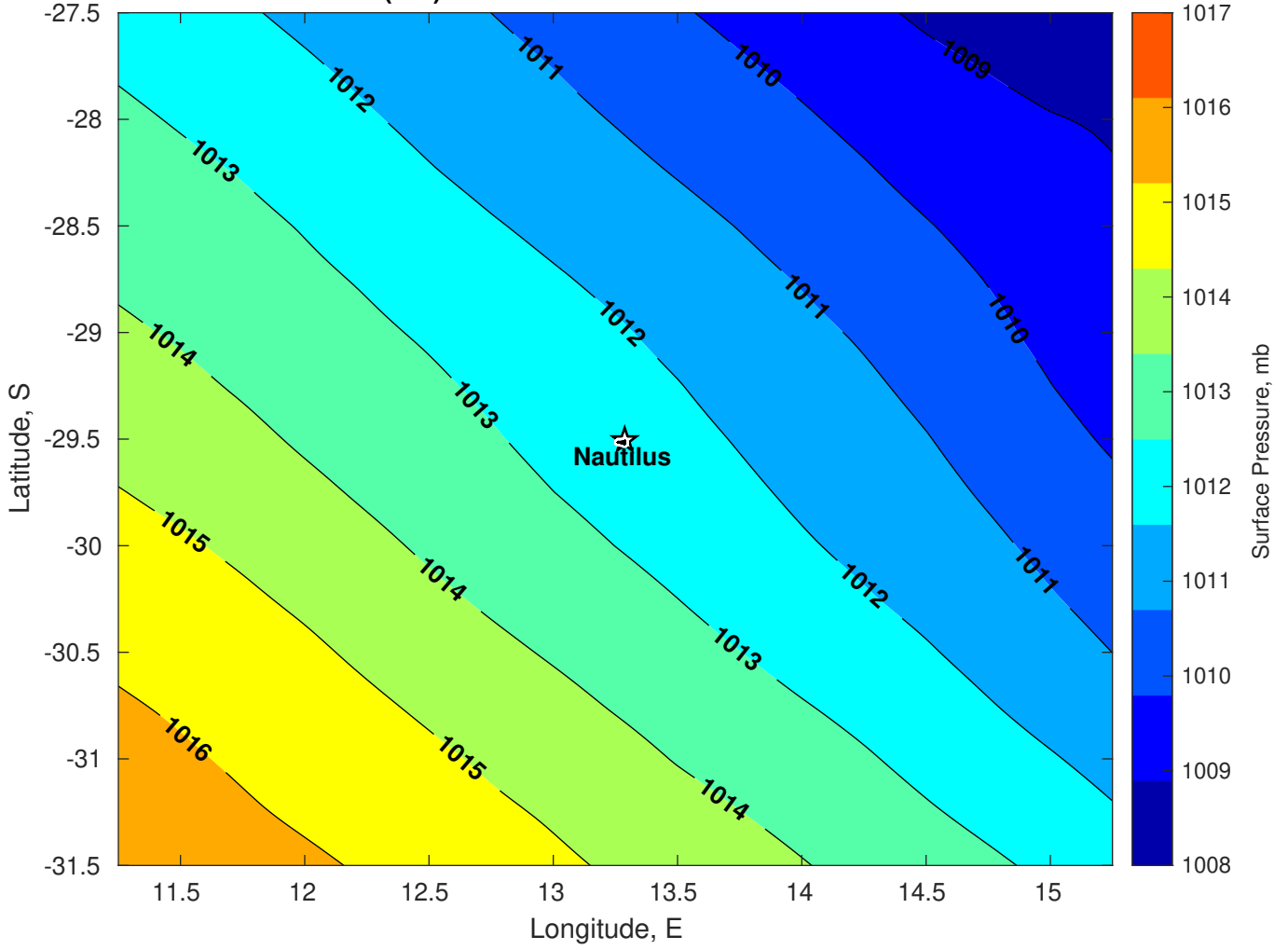




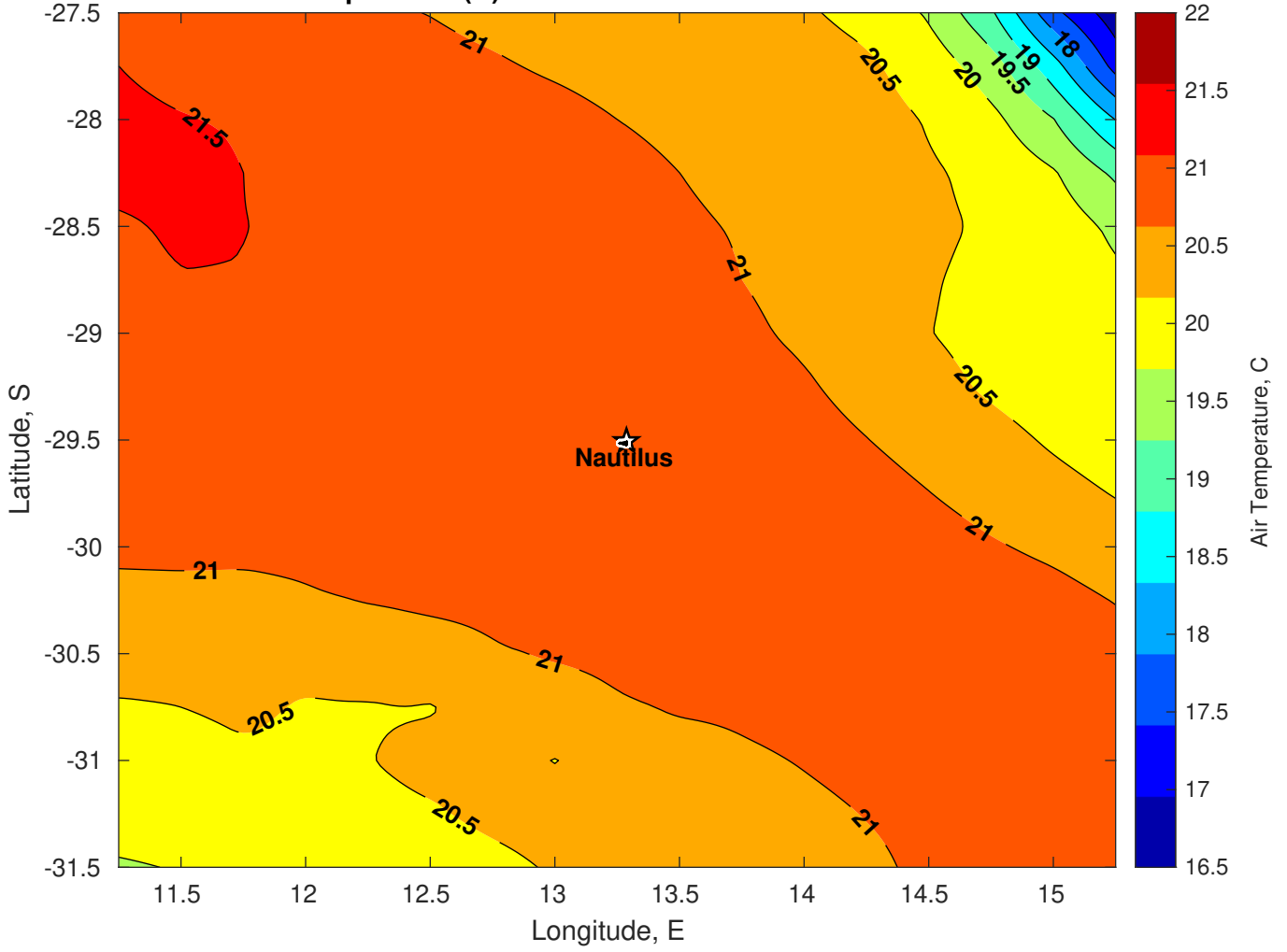
Surface Pressure (mb) for Nautilus at 10-Feb-2025 00:00:00



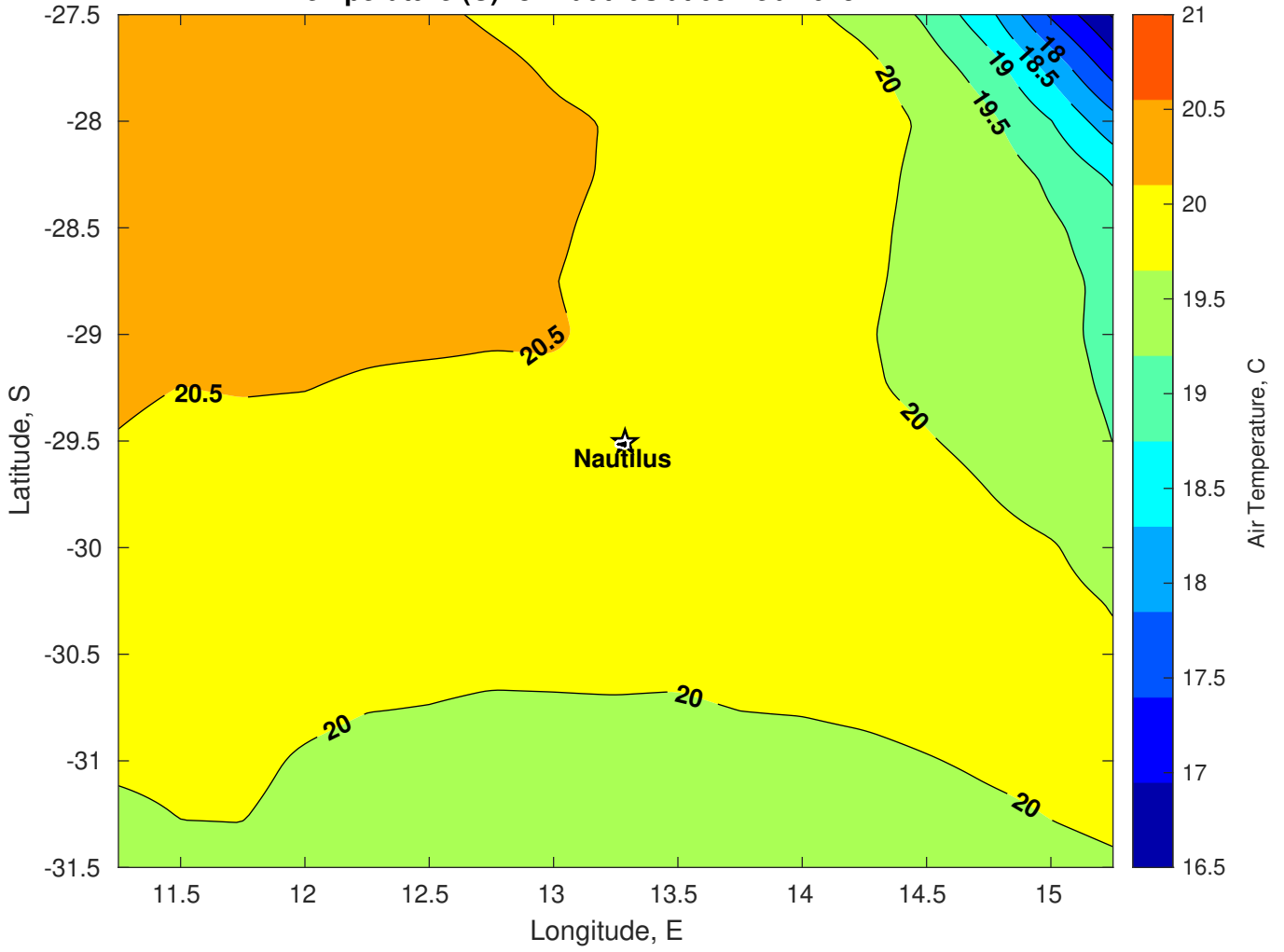
Surface Pressure (mb) for Nautilus at 11-Feb-2025 00:00:00



**Air Temperature (C) for Nautilus at 09-Feb-2025**



Air Temperature (C) for Nautilus at 09-Feb-2025



**Air Temperature (C) for Nautilus at 09-Feb-2025**

