

\*\*\*\*\*  
Marine Weather Forecast for Proteus  
Forecast valid as of 09-Feb-2025 0900 GMT  
\*\*\*\*\*

All times are local.

Today

Winds: NW, 10-15 kts.  
Waves: N, 3-4 feet, 14-15 sec.  
No currents available.

Tonight

Winds: NW, 10-15 kts.  
Waves: N, 3-4 feet, 13-14 sec.  
No currents available.

Monday

Winds: NW, 10-15 kts.  
Waves: N, 3-4 feet, 12-13 sec.  
No currents available.

Monday Night

Winds: NW, 10-15 kts.  
Waves: N, 3-4 feet, 12-13 sec.  
No currents available.

Tuesday

Winds: NW, 10-15 kts.  
Waves: N, 3-4 feet, 11-12 sec.  
No currents available.

Tuesday Night

Winds: NW, 10-15 kts.  
Waves: N, 3-4 feet, 11-12 sec.  
No currents available.

Wednesday

Winds: N, 5-10 kts.  
Waves: N, 3-4 feet, 15-16 sec.  
No currents available.

Wednesday Night

Winds: NW, 15-20 kts.  
Waves: N, 3-4 feet, 15-16 sec.  
No currents available.

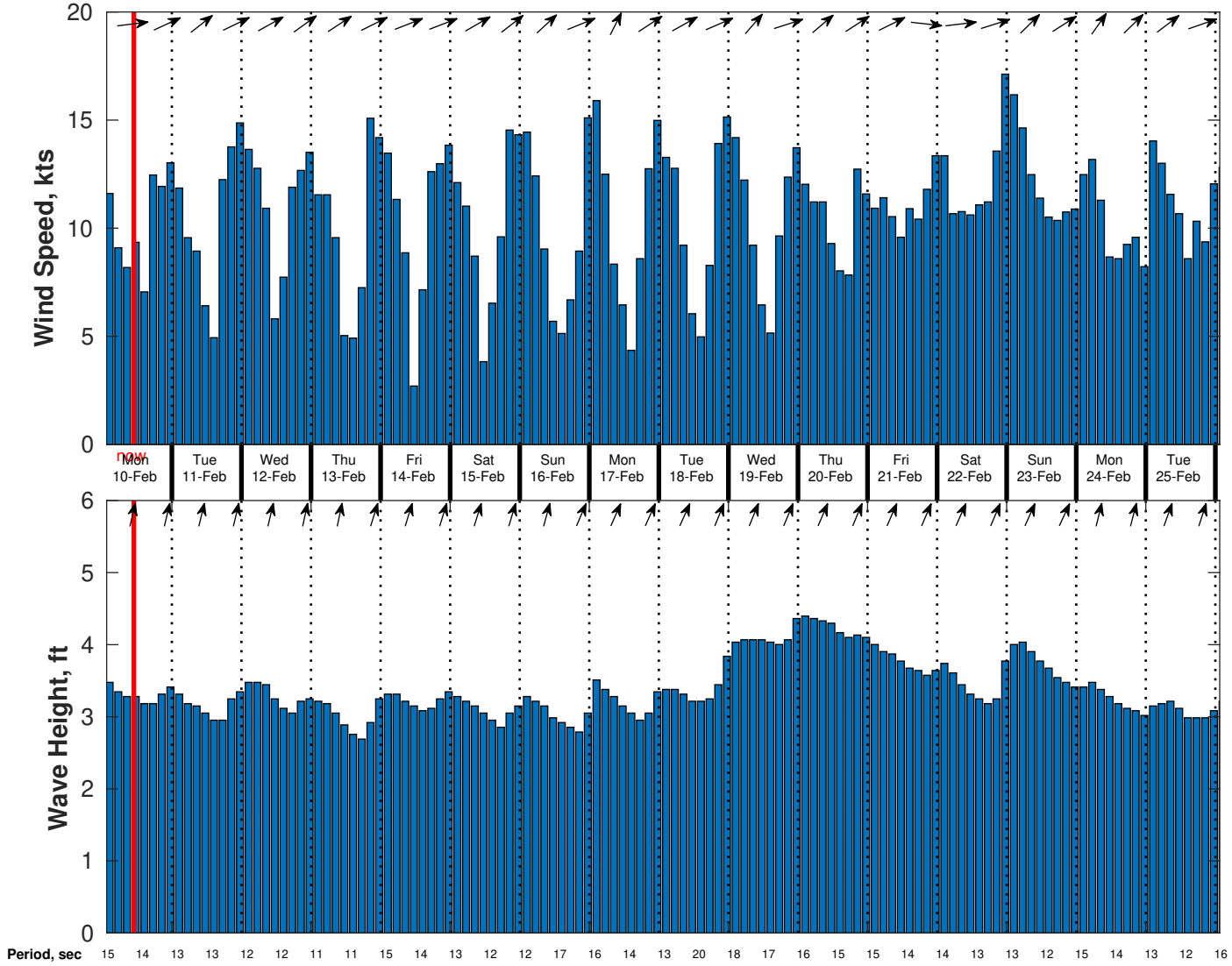
Thursday

Winds: NW, 10-15 kts.  
Waves: N, 3-4 feet, 14-15 sec.  
No currents available.

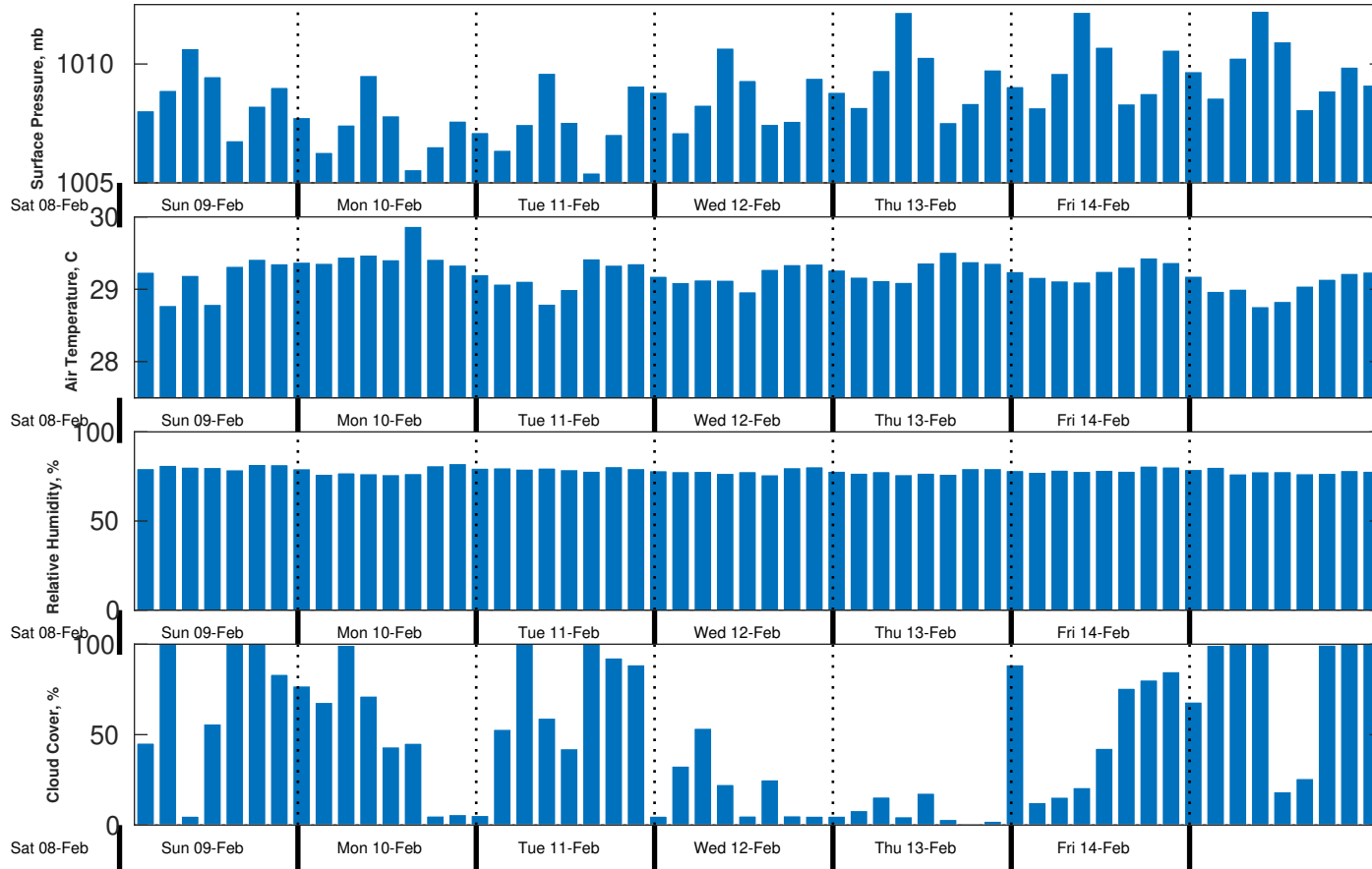
Thursday Night

Winds: NW, 10-15 kts.  
Waves: N, 3-4 feet, 13-14 sec.  
No currents available.

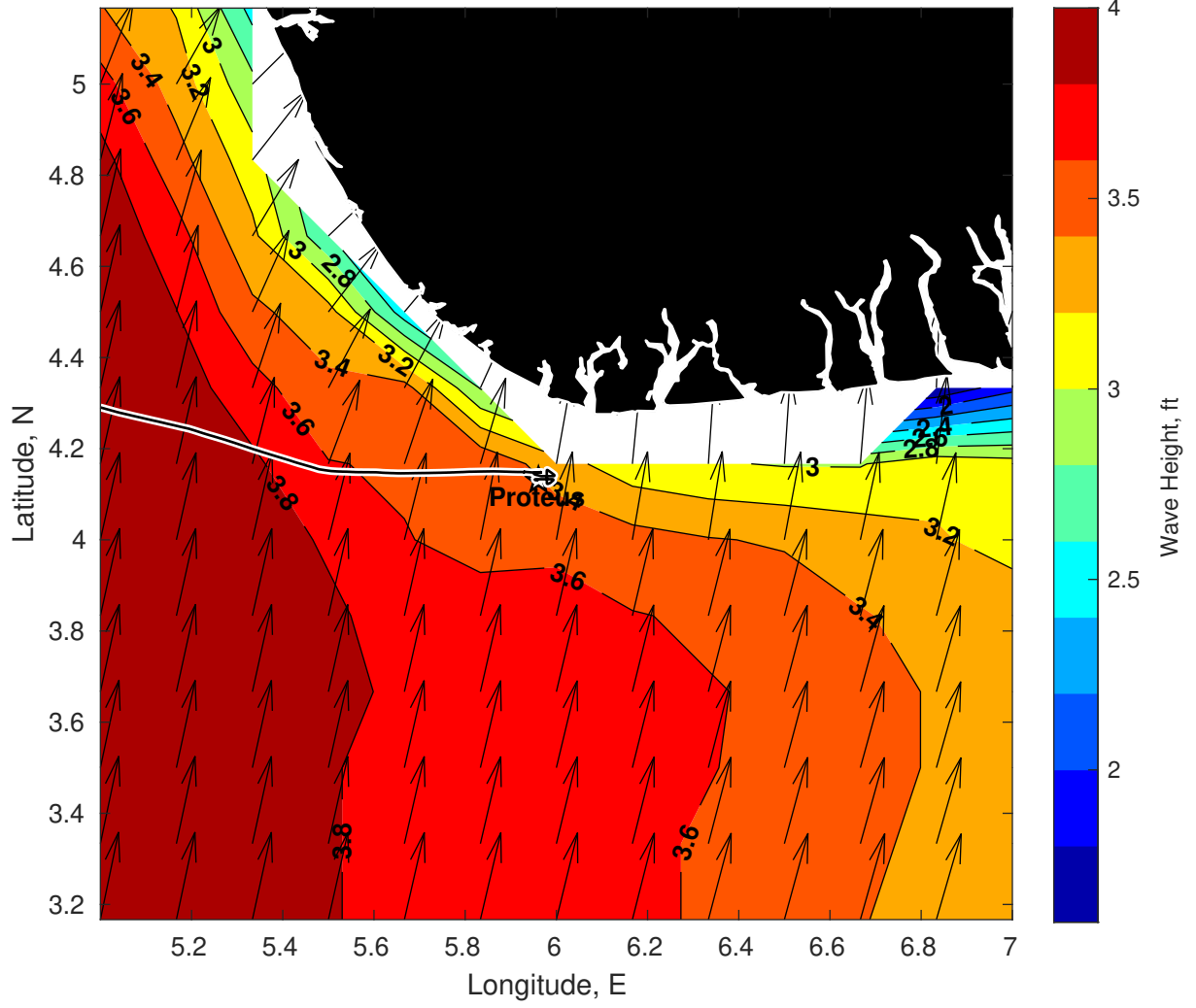
Wind & Wave Forecast for Proteus from 09-Feb-2025 01:00:00 to 25-Feb-2025 01:00:00



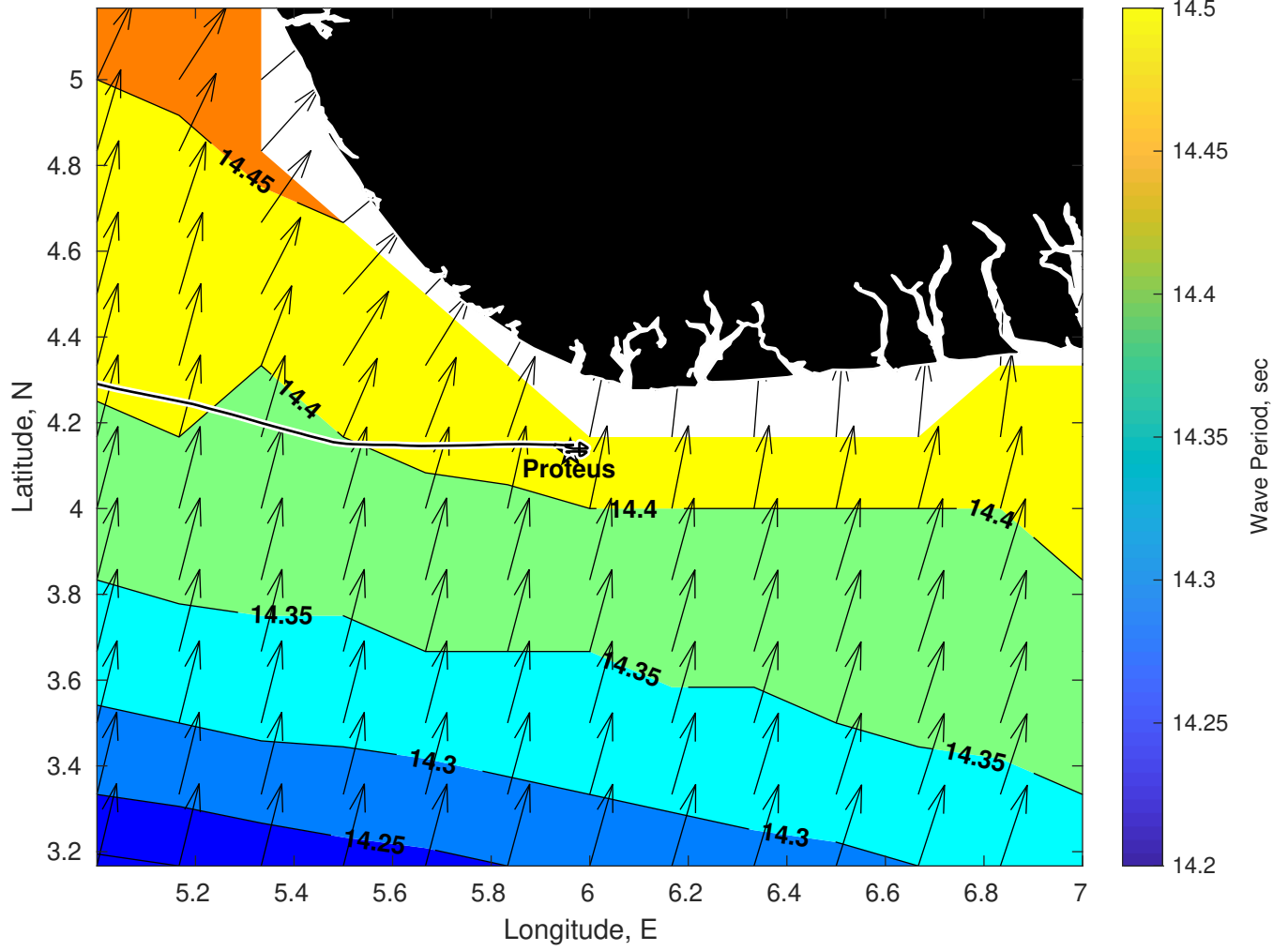
### Met Forecast for Proteus from 09-Feb-2025 00:00:00 to 16-Feb-2025 00:00:00



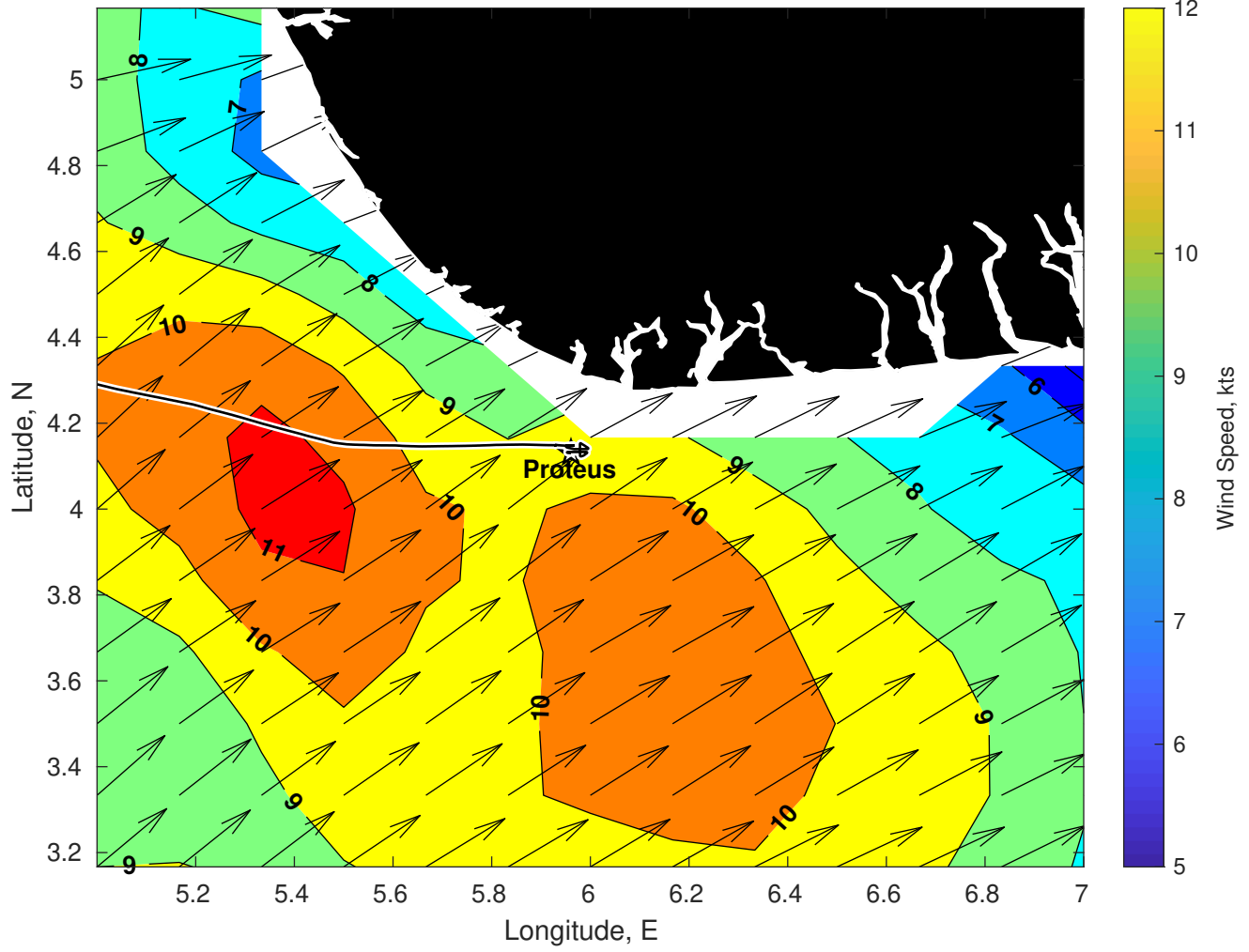
Wave Height (ft) for Proteus at 09-Feb-2025 09:00:00



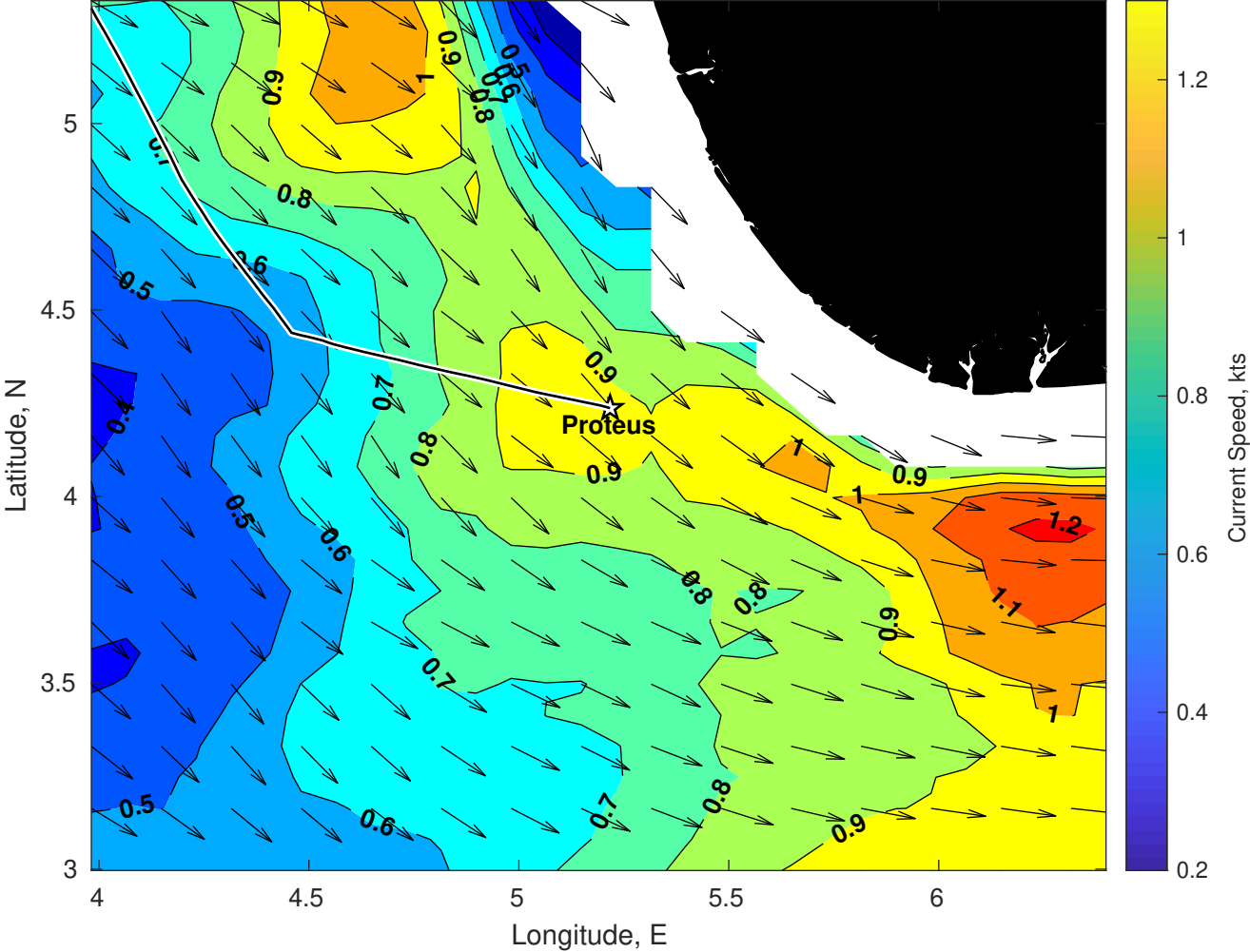
Wave Period (sec) for Proteus at 09-Feb-2025 09:00:00



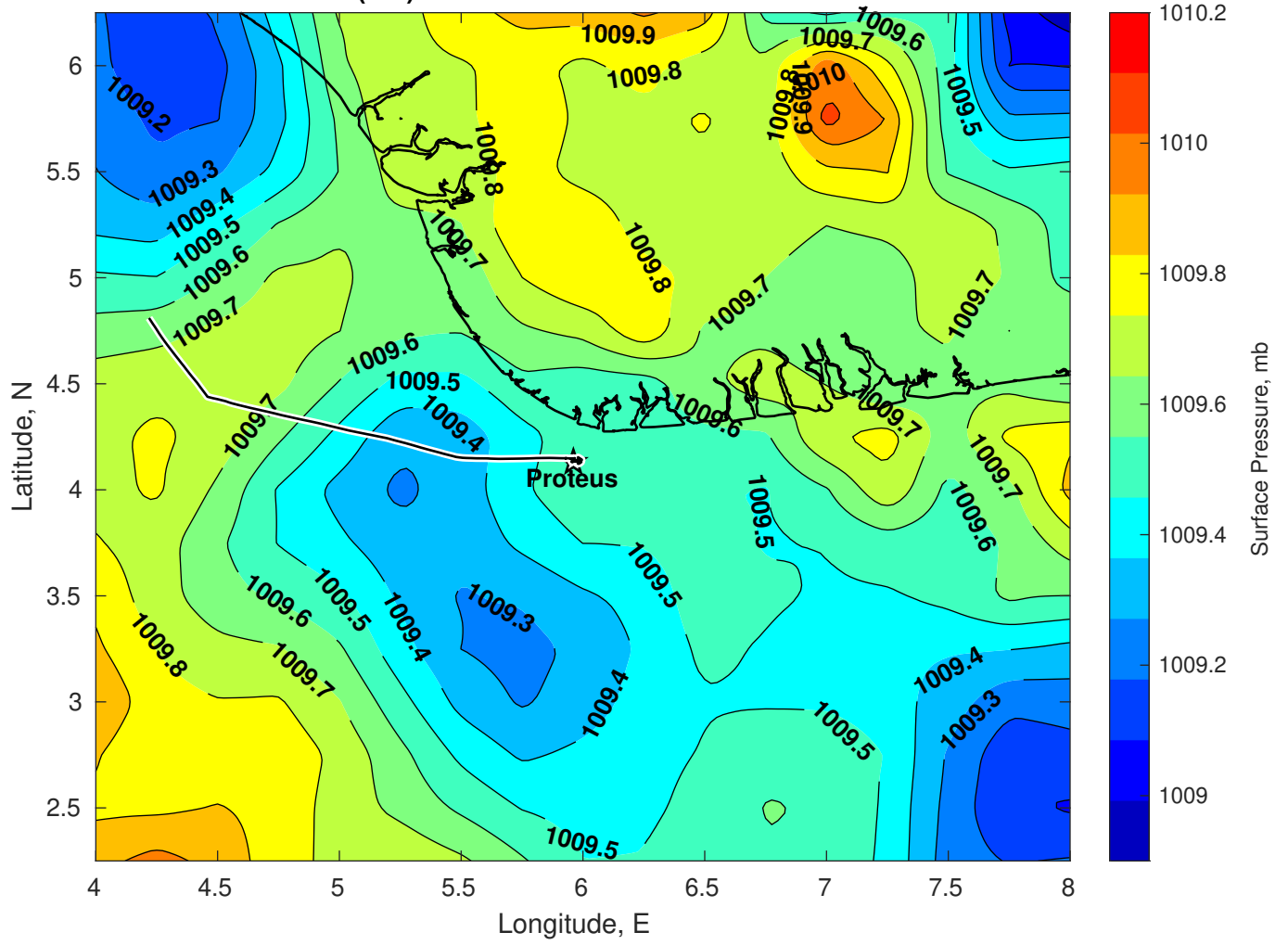
Winds (kts) for Proteus at 09-Feb-2025 09:00:00



Surface Currents for Proteus at 08-Feb-2025 00:00:00

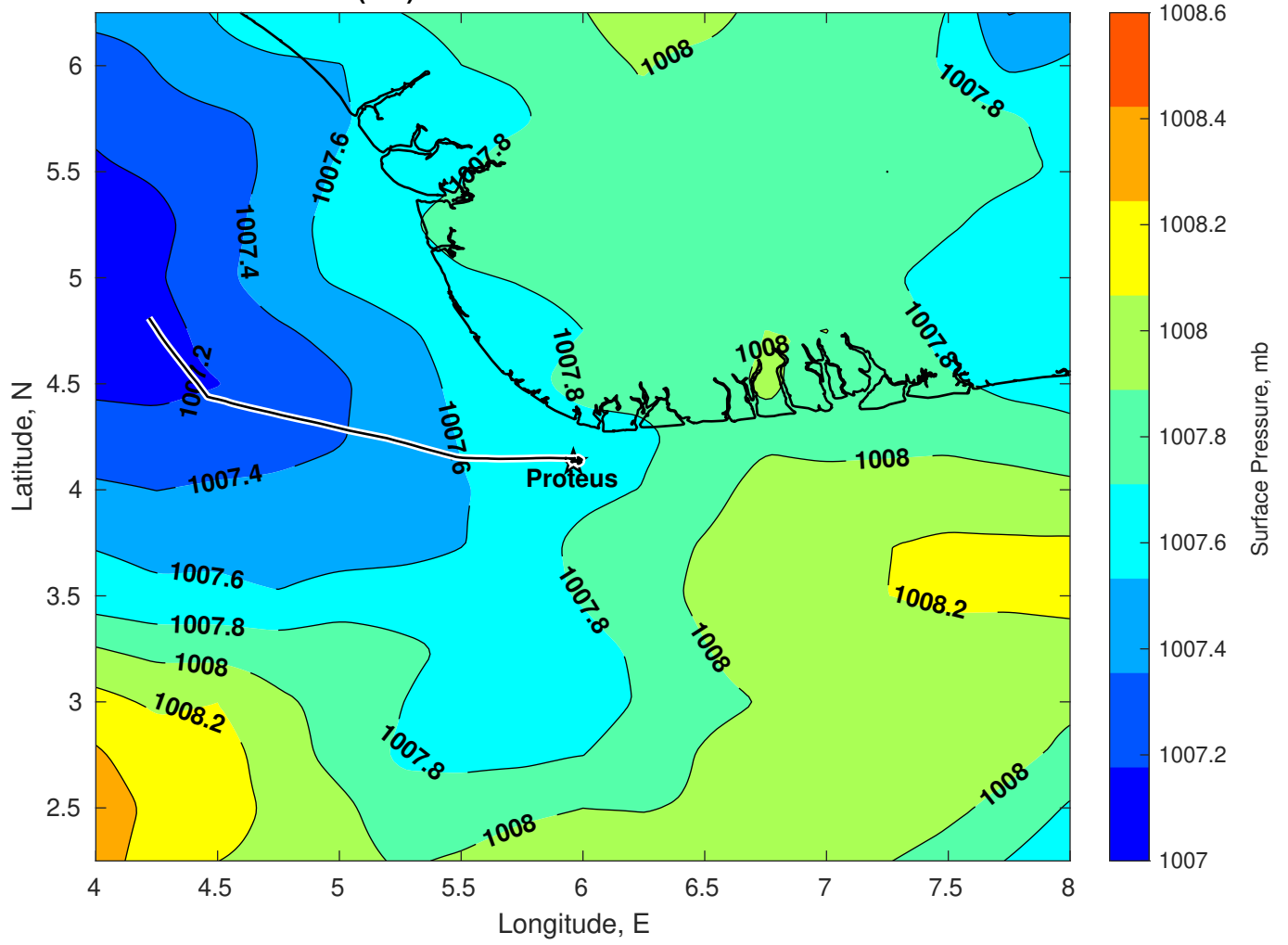


Surface Pressure (mb) for Proteus at 09-Feb-2025 00:00:00

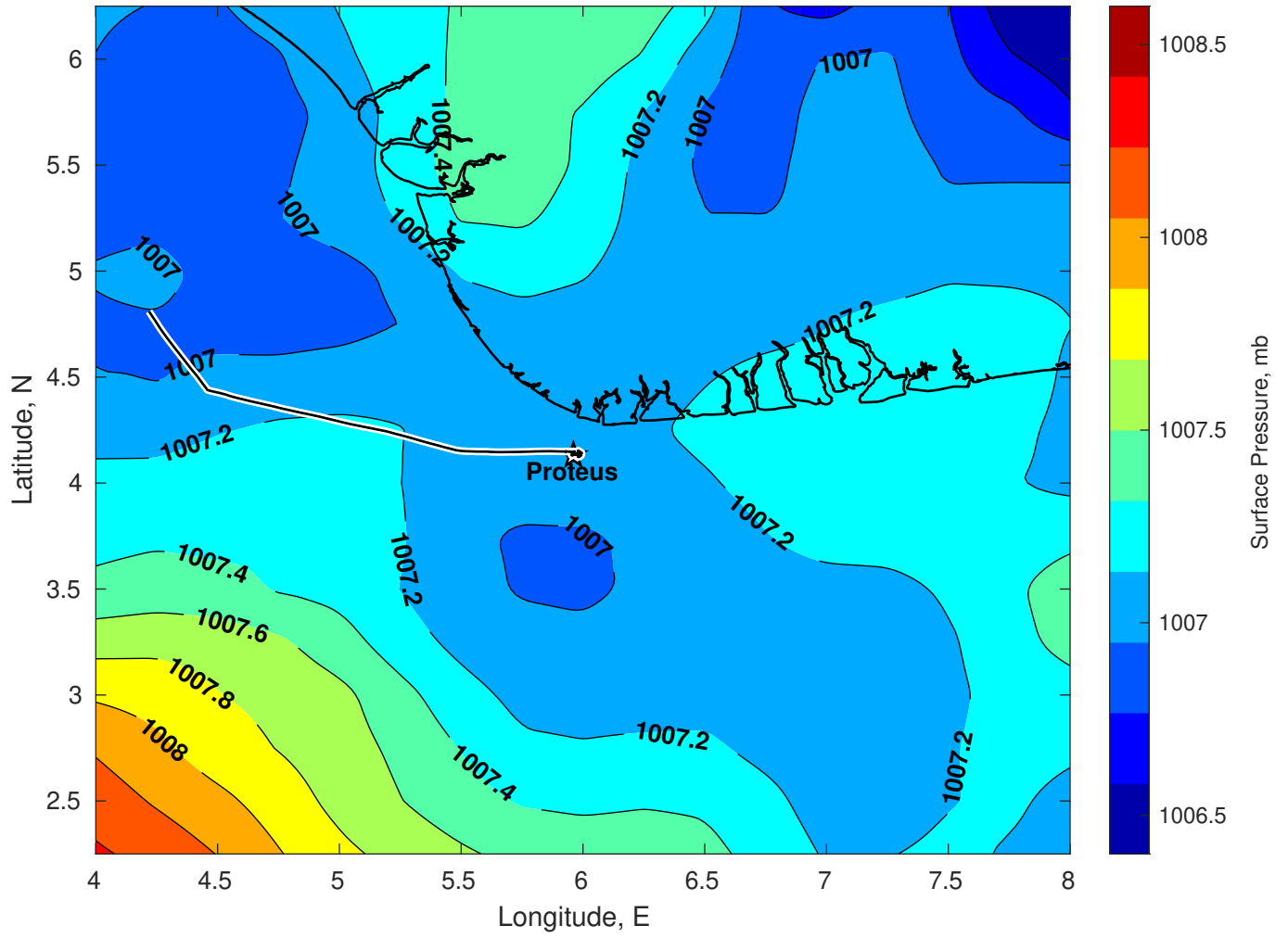




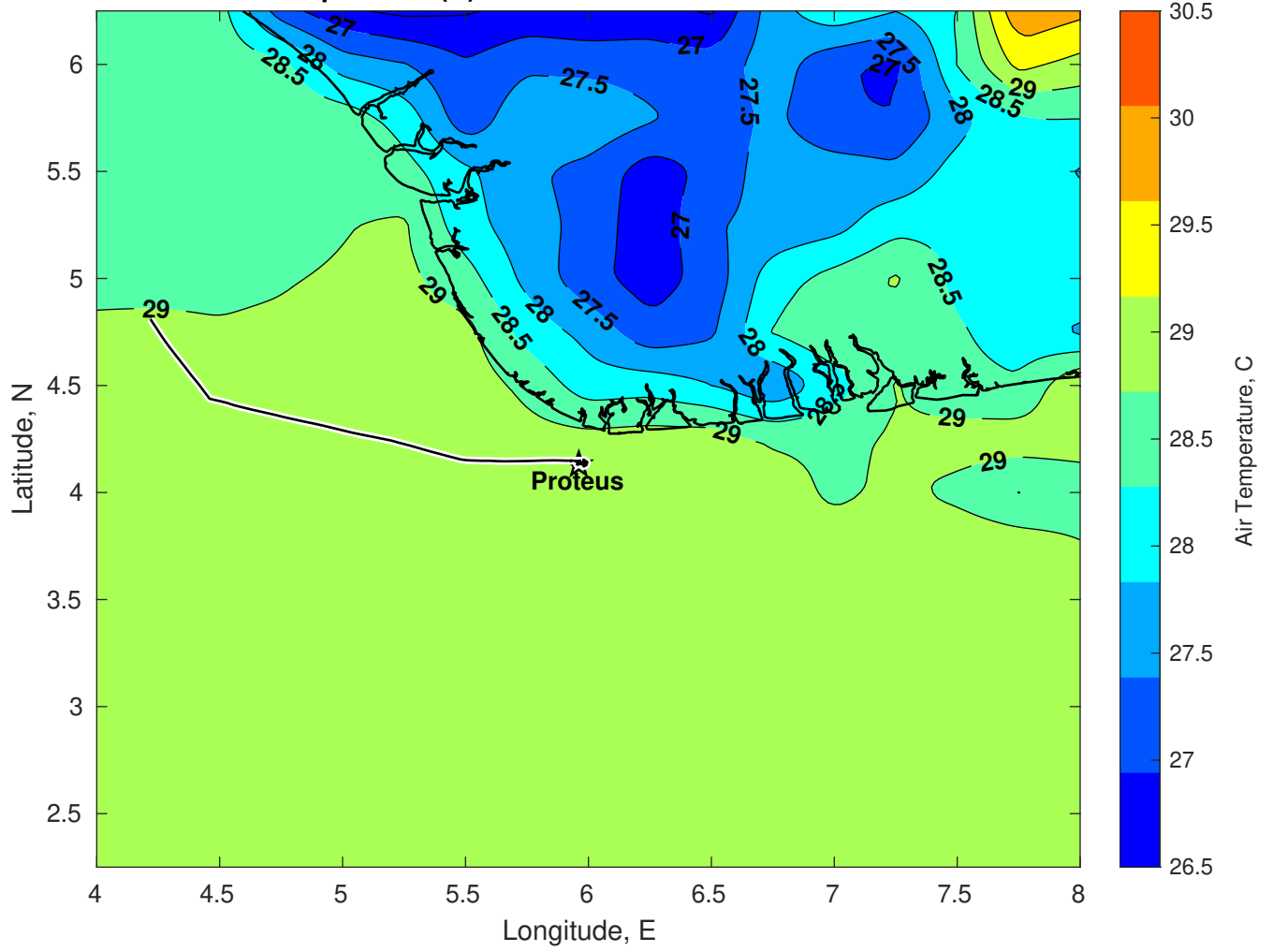
Surface Pressure (mb) for Proteus at 10-Feb-2025 00:00:00



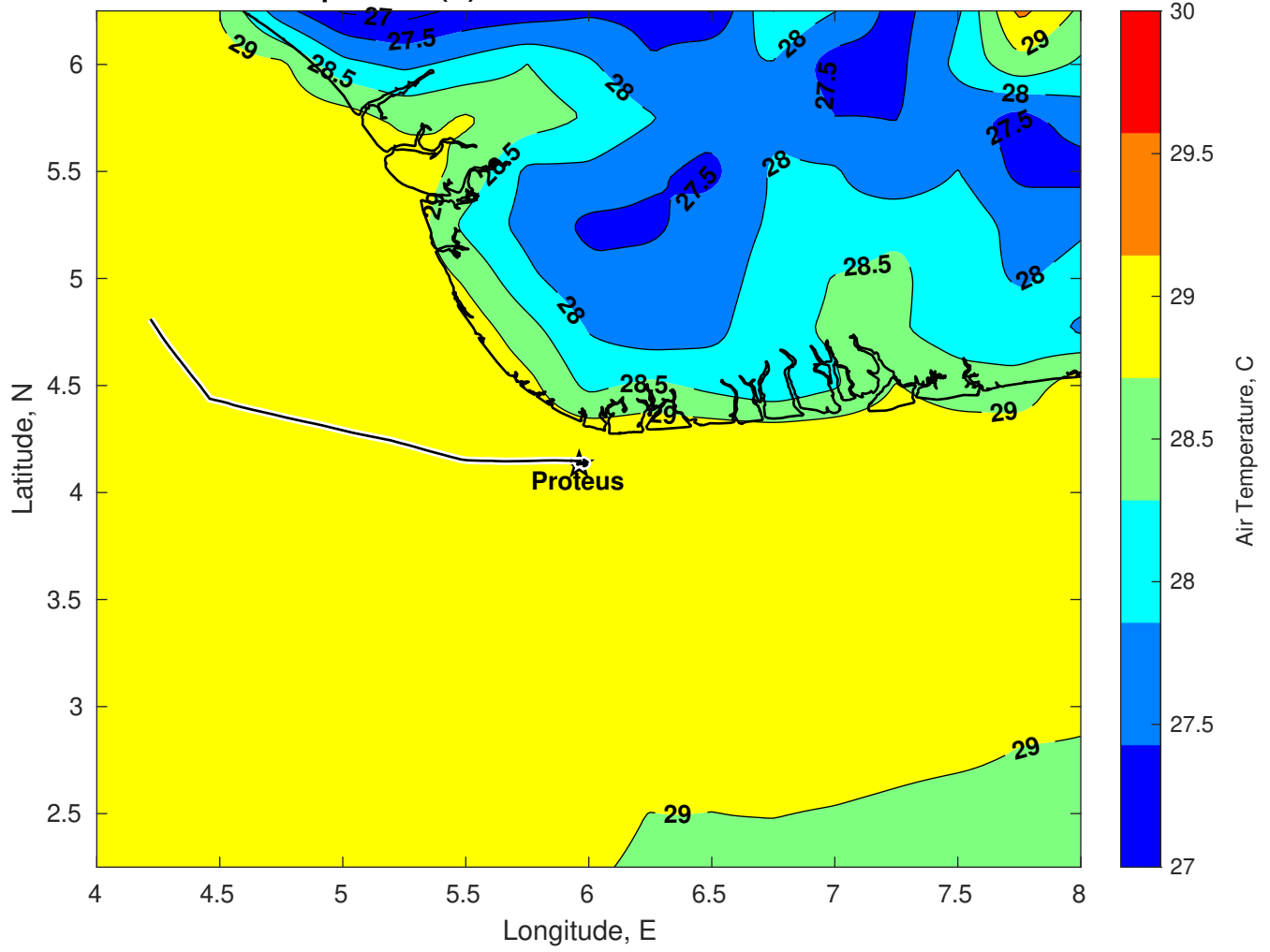
Surface Pressure (mb) for Proteus at 11-Feb-2025 00:00:00



**Air Temperature (C) for Proteus at 09-Feb-2025**



Air Temperature (C) for Proteus at 09-Feb-2025



Air Temperature (C) for Proteus at 09-Feb-2025

