
Marine Weather Forecast for TOTAL Namibia GTS
Forecast valid as of 09-Feb-2025 0900 GMT

All times are local.

Today

Winds: NE, 20-25 kts.
Waves: N, 8-9 feet, 6-7 sec.
No currents available.

Tonight

Winds: NE, 20-25 kts.
Waves: N, 10-11 feet, 7-8 sec.
No currents available.

Monday

Winds: NE, 25-30 kts.
Waves: N, 11-12 feet, 8-9 sec.
No currents available.

Monday Night

Winds: NE, 25-30 kts.
Waves: N, 12-13 feet, 9-10 sec.
No currents available.

Tuesday

Winds: NE, 25-30 kts.
Waves: NE, 11-12 feet, 9-10 sec.
No currents available.

Tuesday Night

Winds: N, 20-25 kts.
Waves: NE, 10-11 feet, 8-9 sec.
No currents available.

Wednesday

Winds: N, 15-20 kts.
Waves: N, 8-9 feet, 8-9 sec.
No currents available.

Wednesday Night

Winds: NE, 15-20 kts.
Waves: N, 6-7 feet, 10-11 sec.
No currents available.

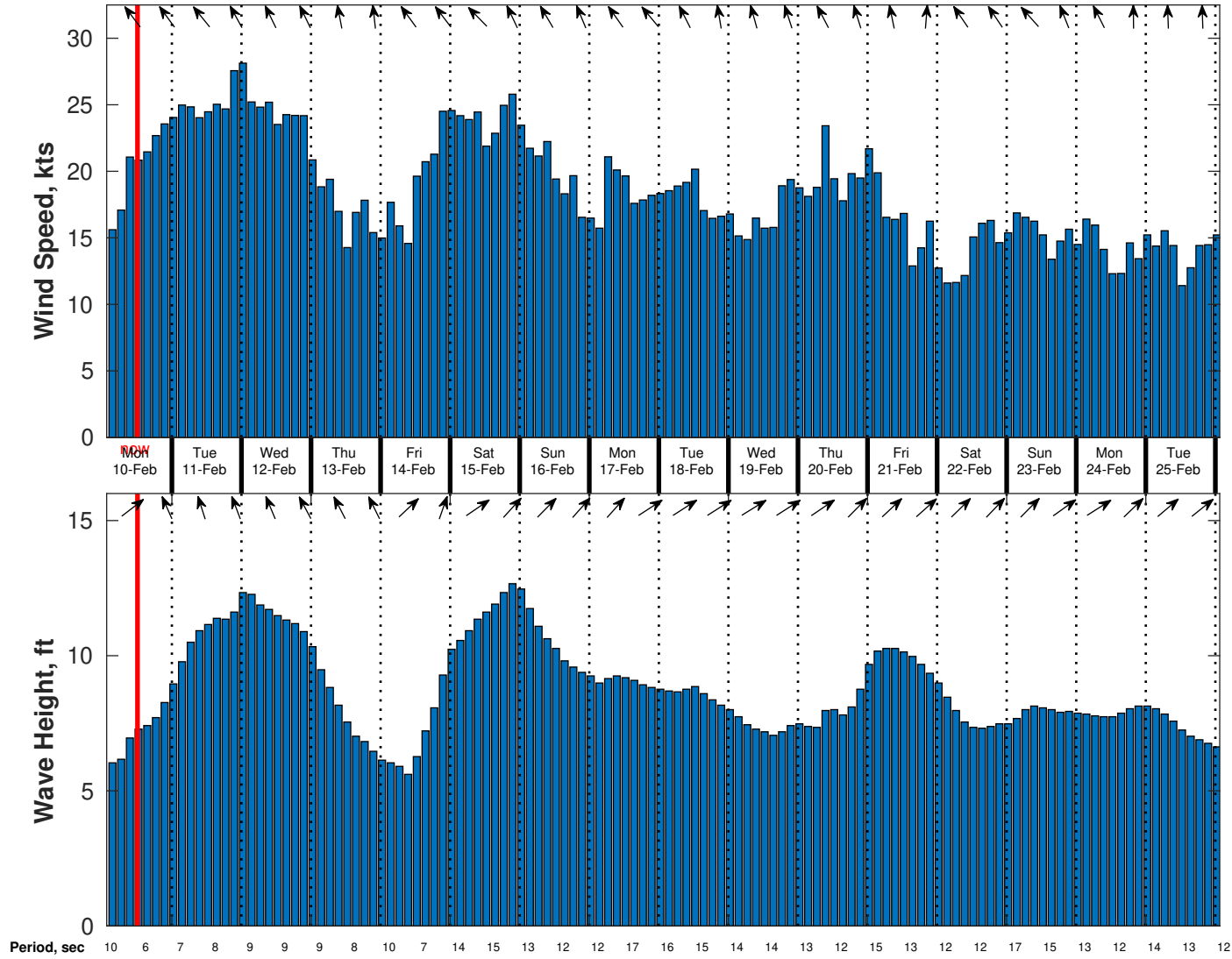
Thursday

Winds: NE, 20-25 kts.
Waves: N, 9-10 feet, 14-15 sec.
No currents available.

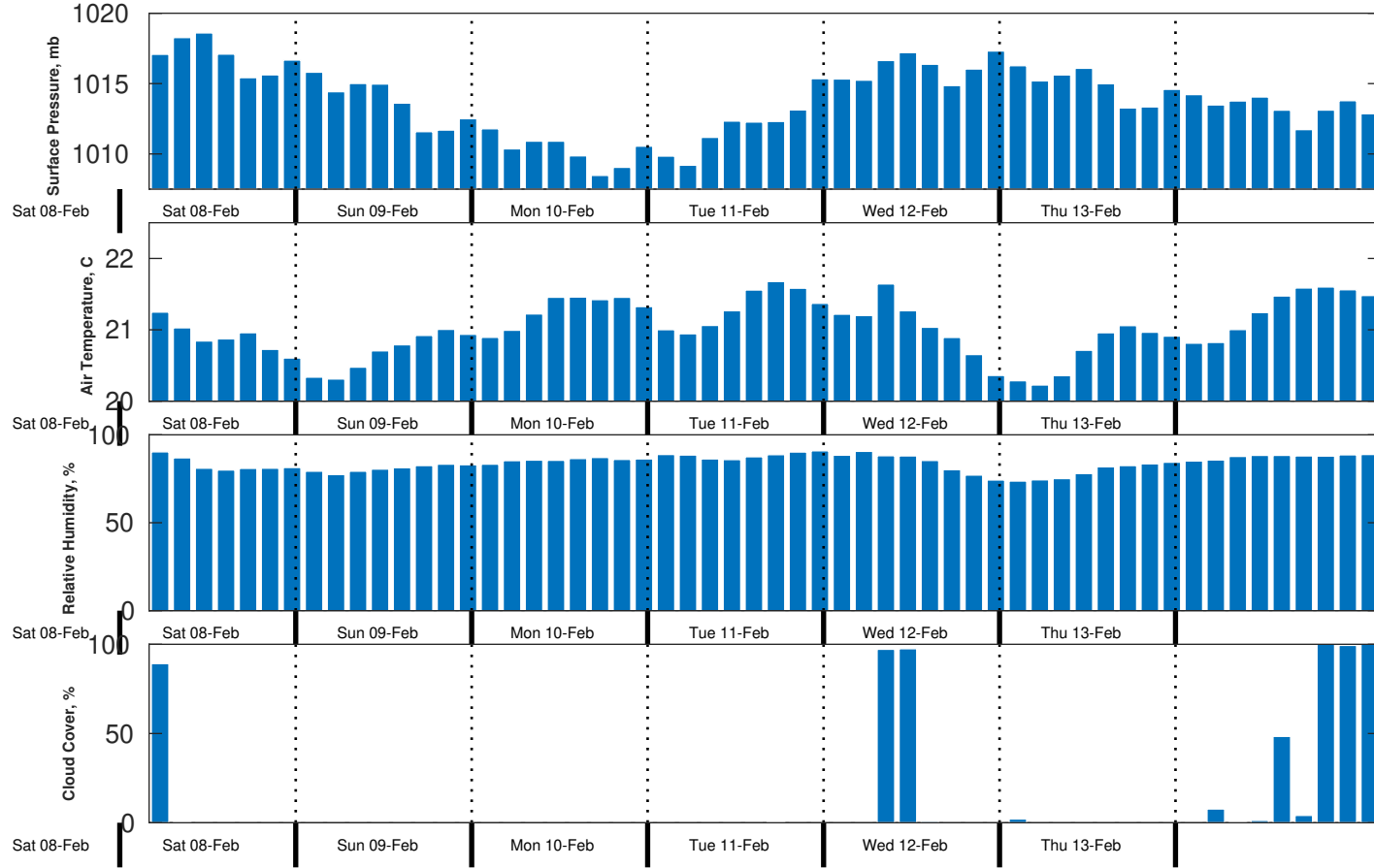
Thursday Night

Winds: NE, 20-25 kts.
Waves: N, 10-11 feet, 13-14 sec.
No currents available.

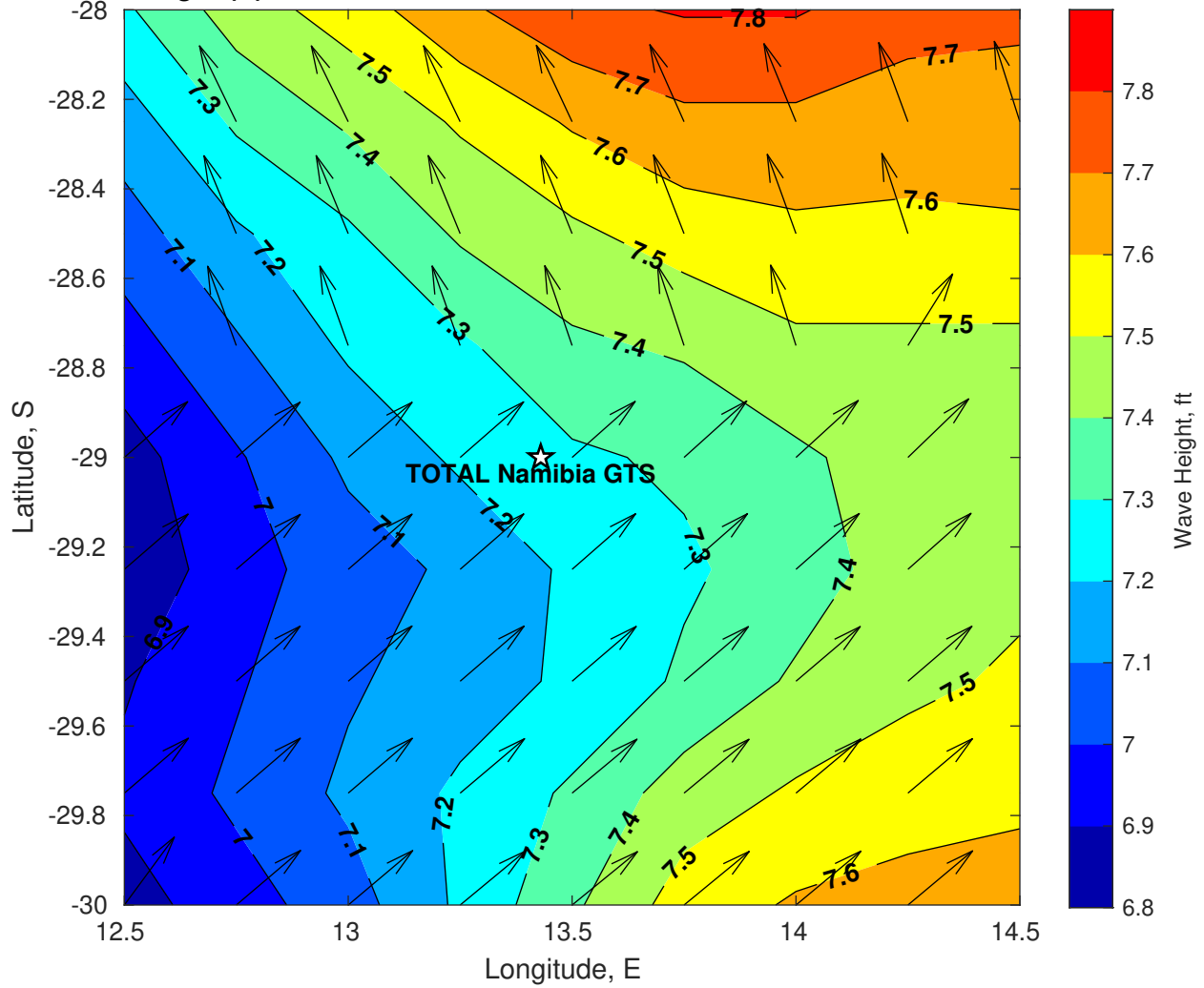
Wind & Wave Forecast for TOTAL Namibia GTS from 09-Feb-2025 02:00:00 to 25-Feb-2025 02:00:00



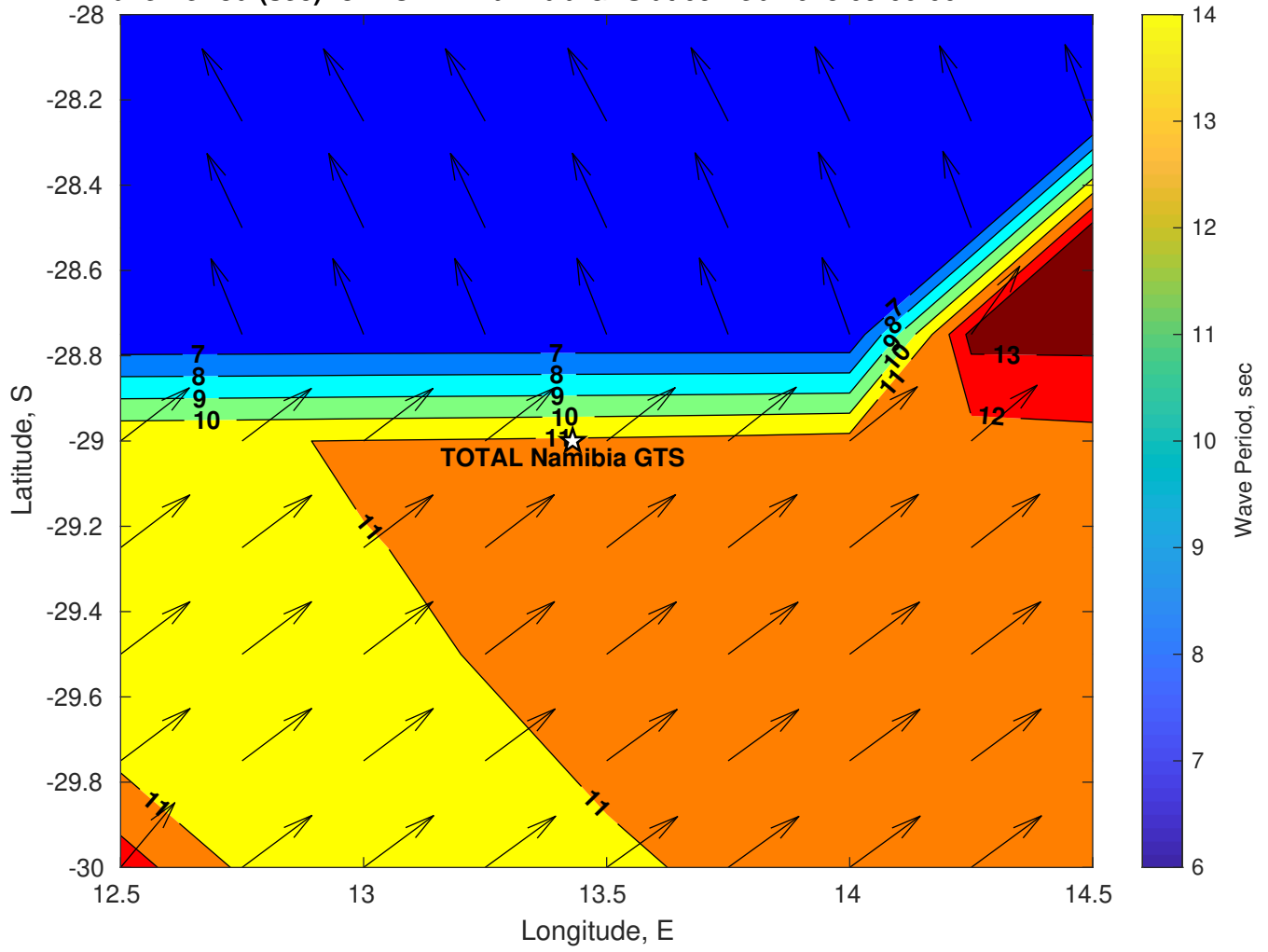
Met Forecast for TOTAL Namibia GTS from 09-Feb-2025 00:00:00 to 16-Feb-2025 00:00:00



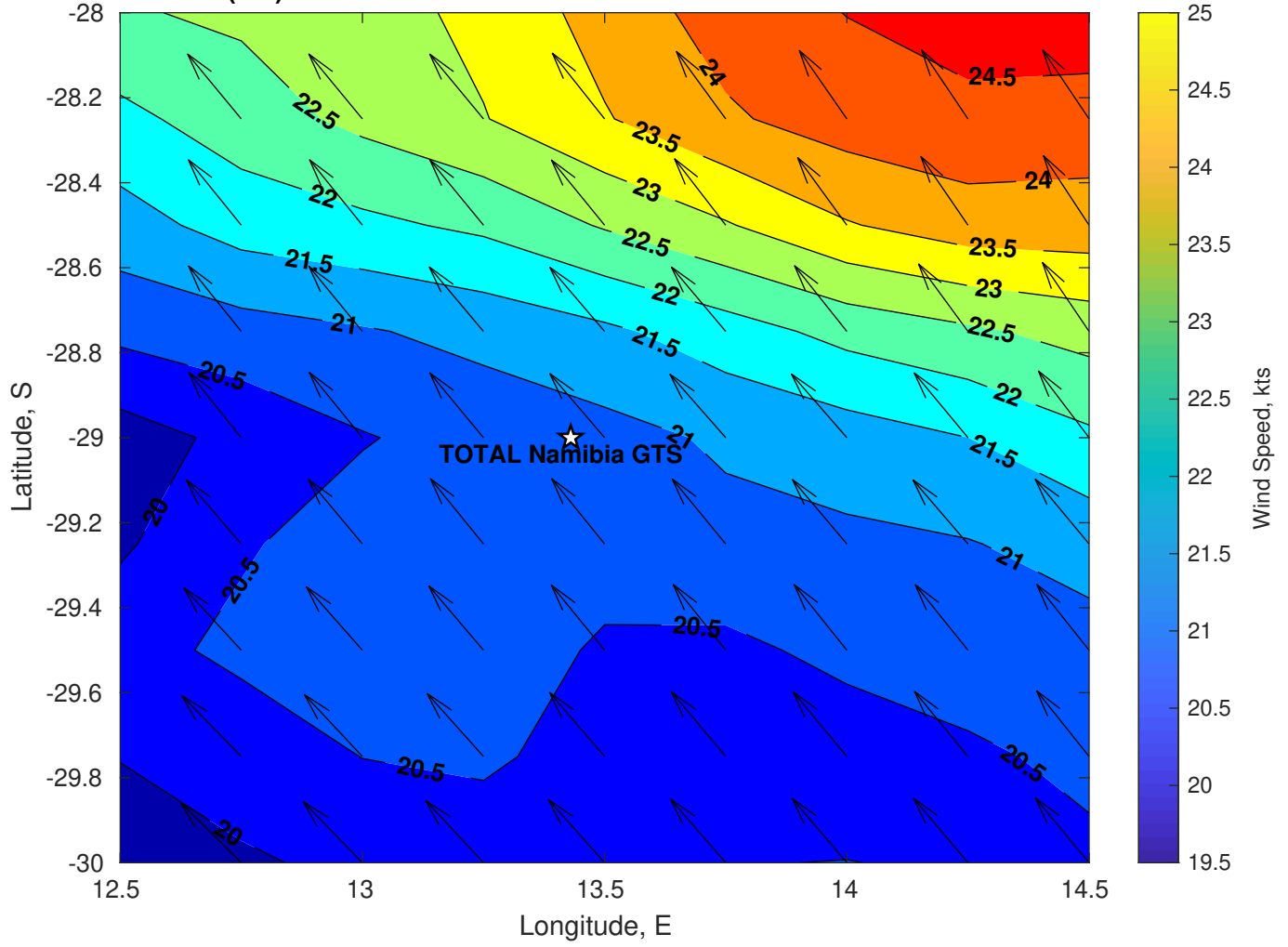
Wave Height (ft) for TOTAL Namibia GTS at 09-Feb-2025 09:00:00



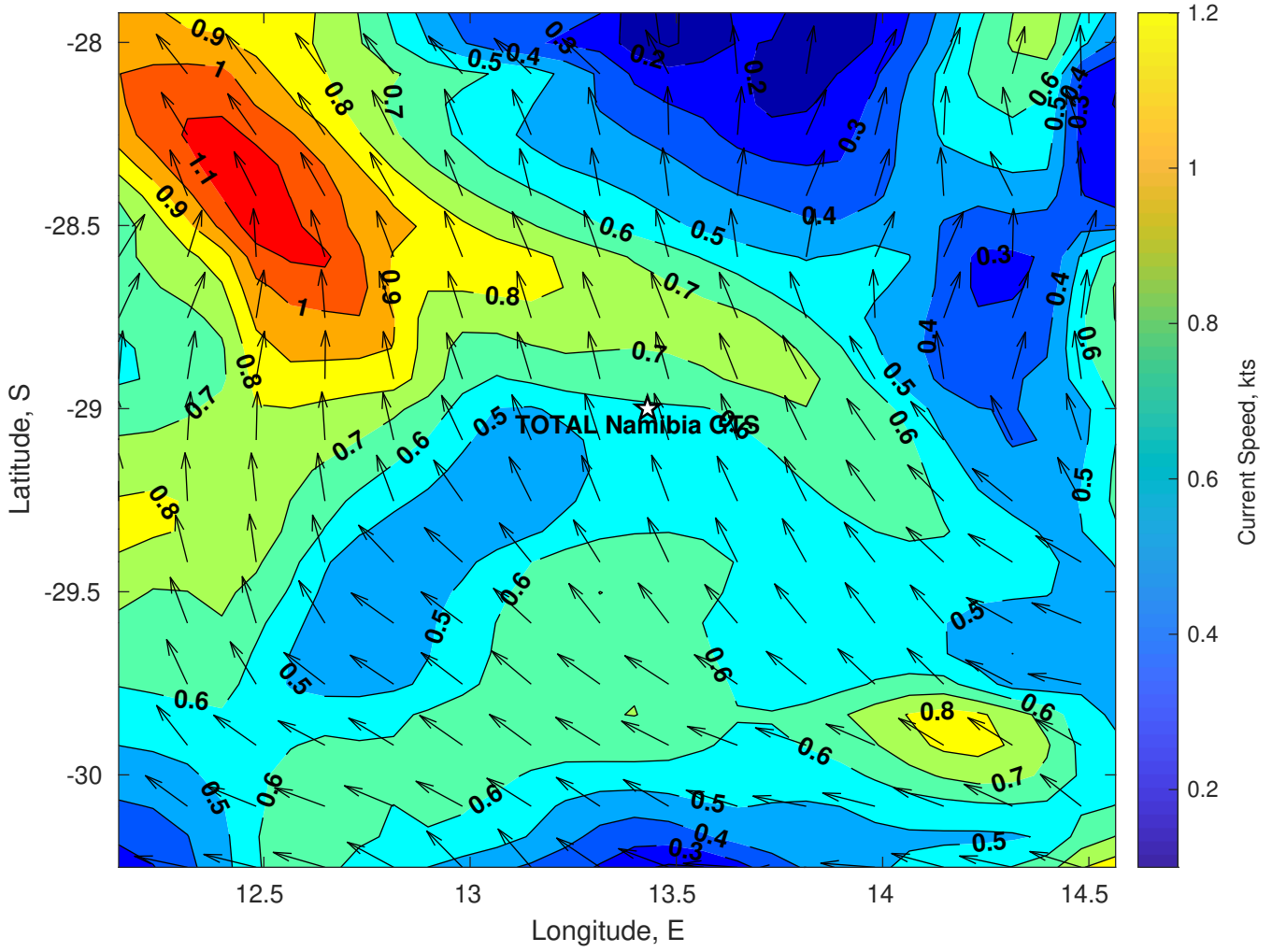
Wave Period (sec) for TOTAL Namibia GTS at 09-Feb-2025 09:00:00



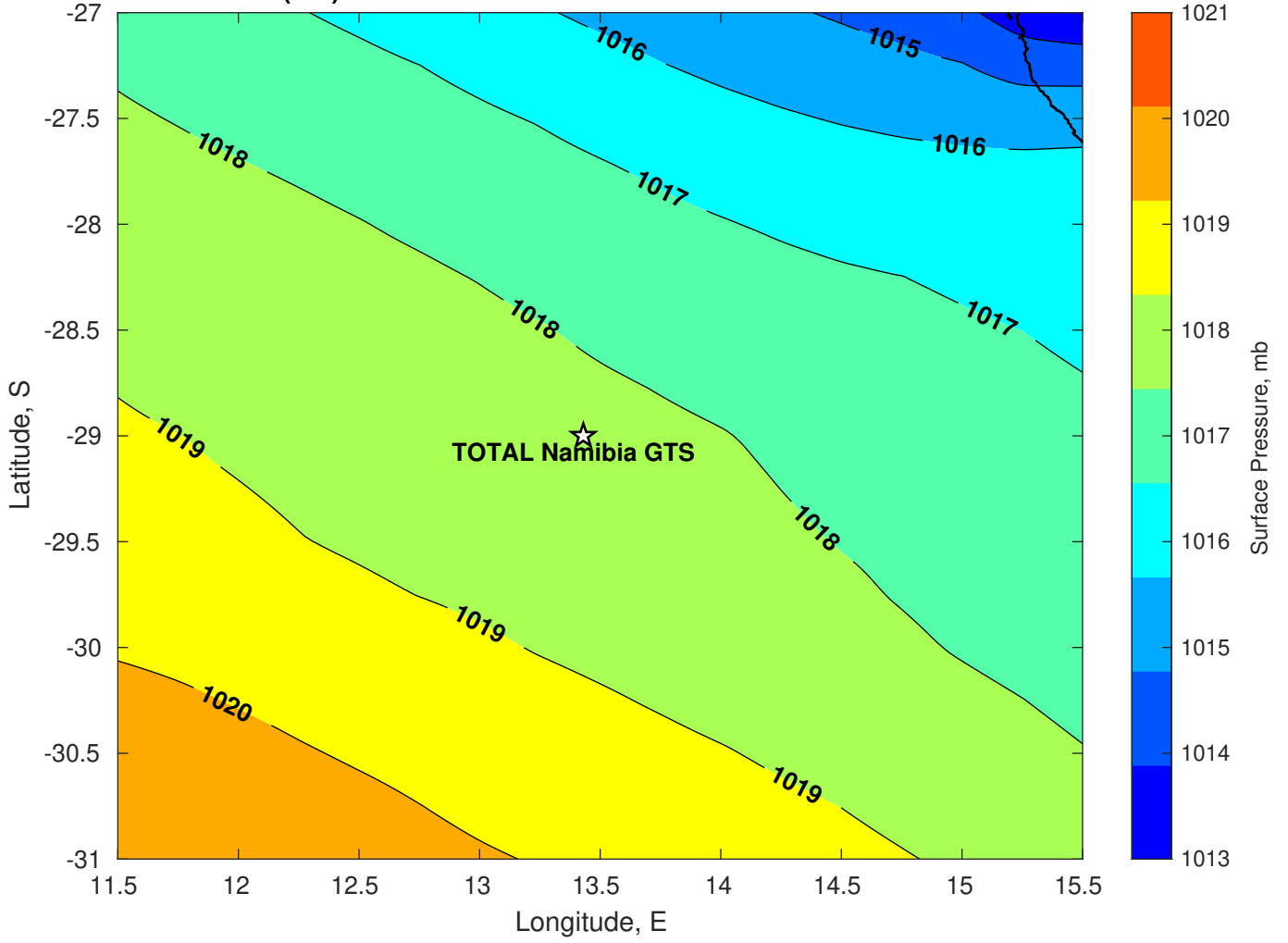
Winds (kts) for TOTAL Namibia GTS at 09-Feb-2025 09:00:00



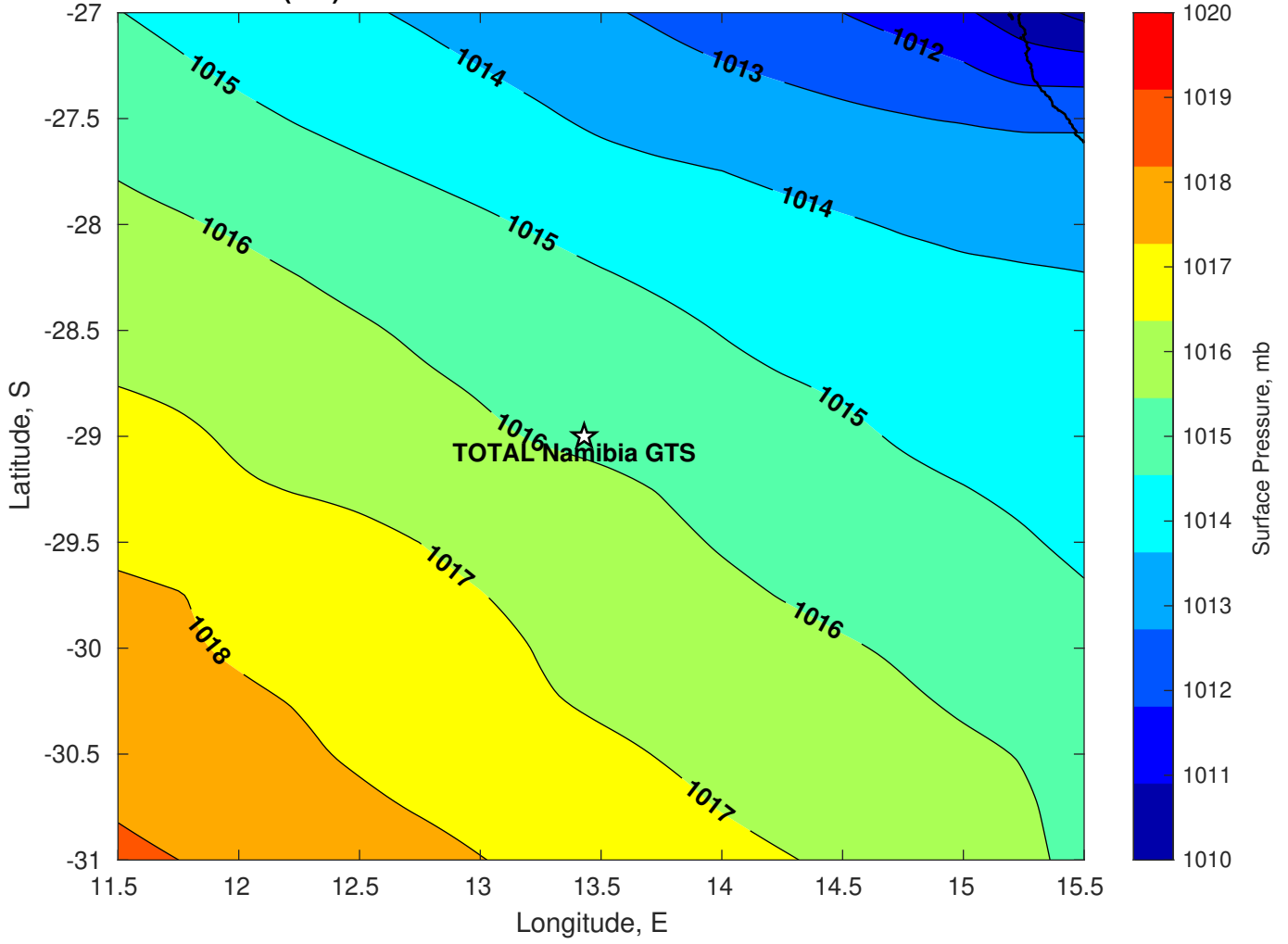
Surface Currents for TOTAL Namibia GTS at 08-Feb-2025 00:00:00



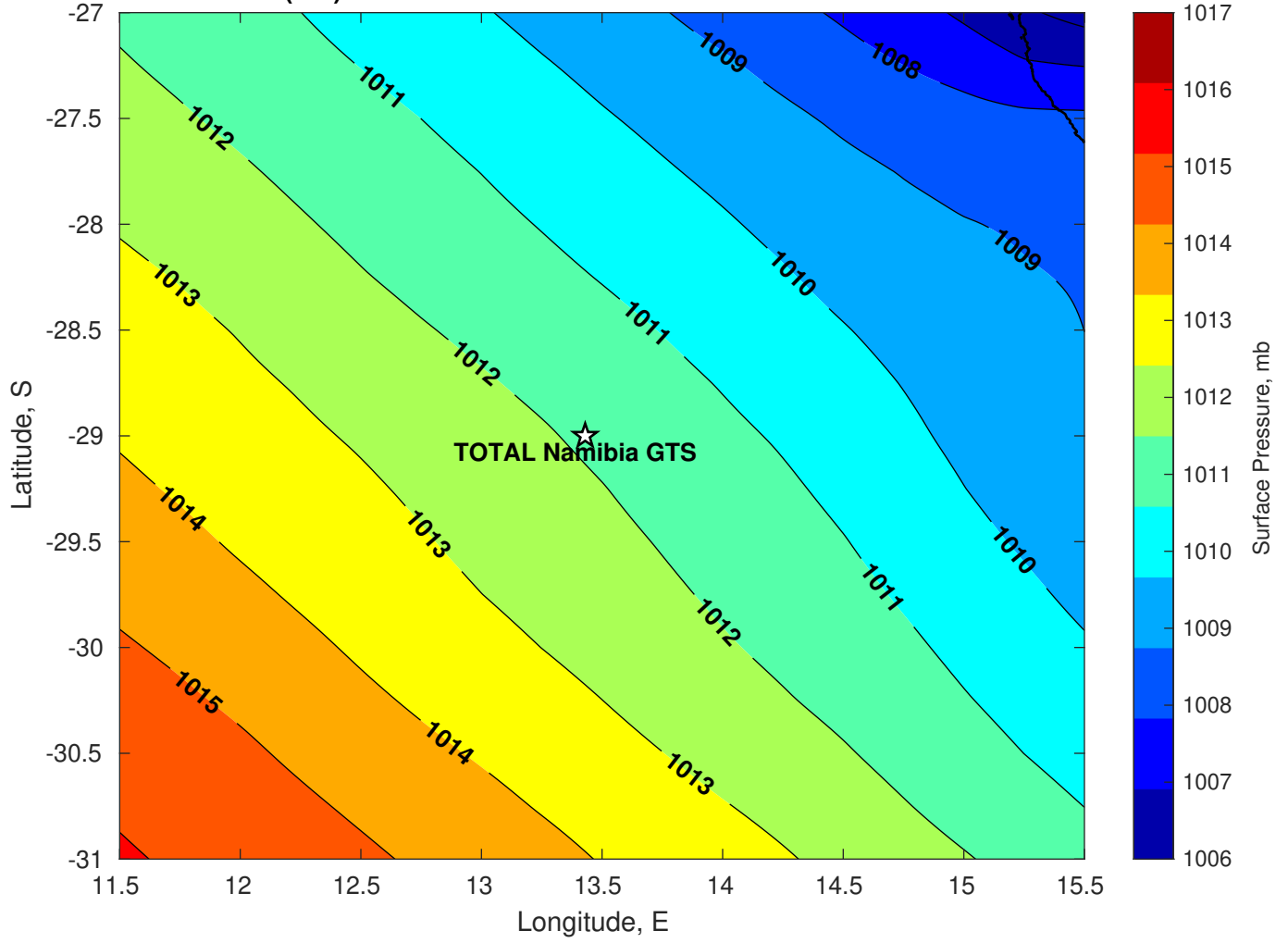
Surface Pressure (mb) for TOTAL Namibia GTS at 09-Feb-2025 00:00:00



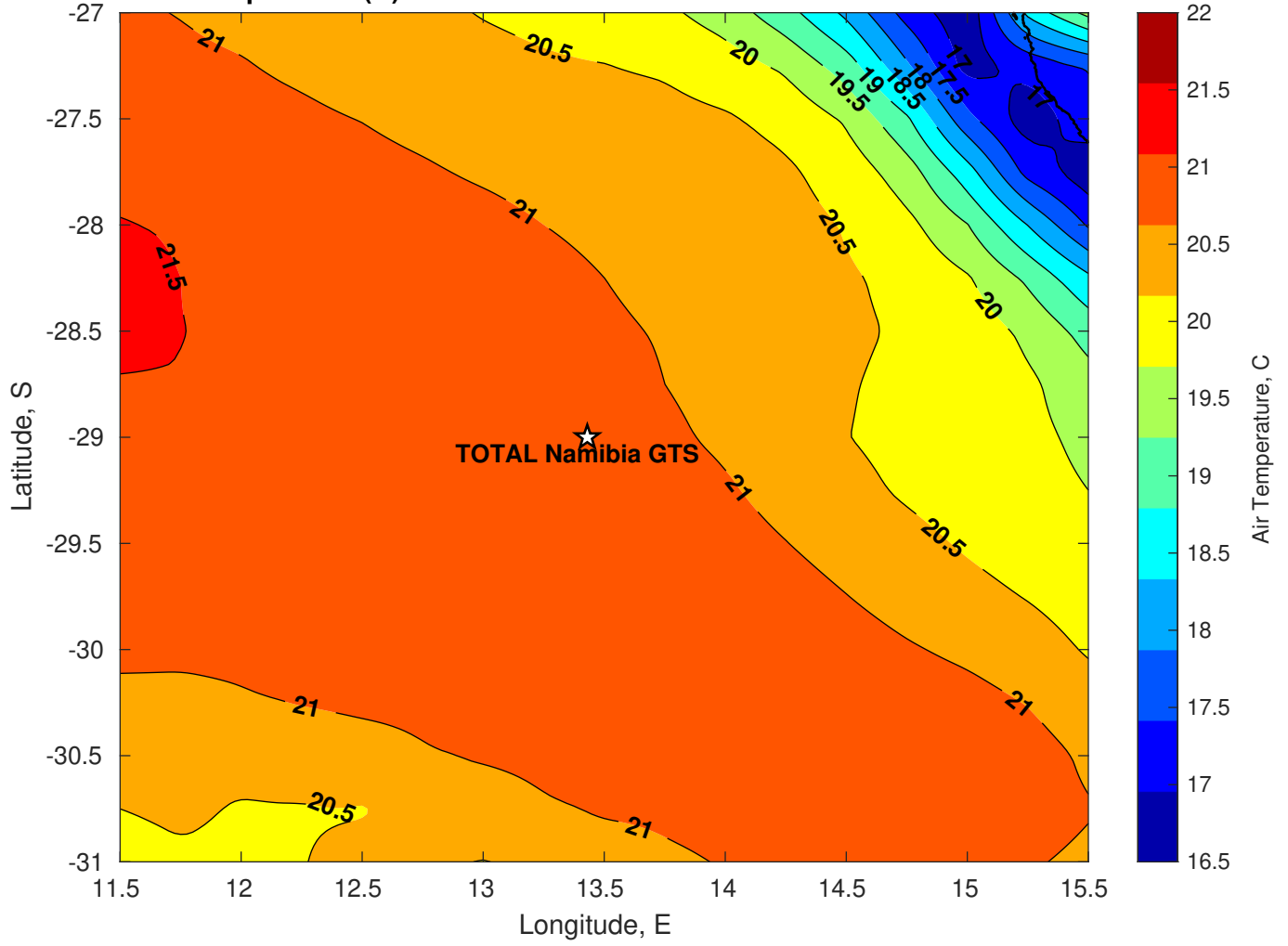
Surface Pressure (mb) for TOTAL Namibia GTS at 10-Feb-2025 00:00:00



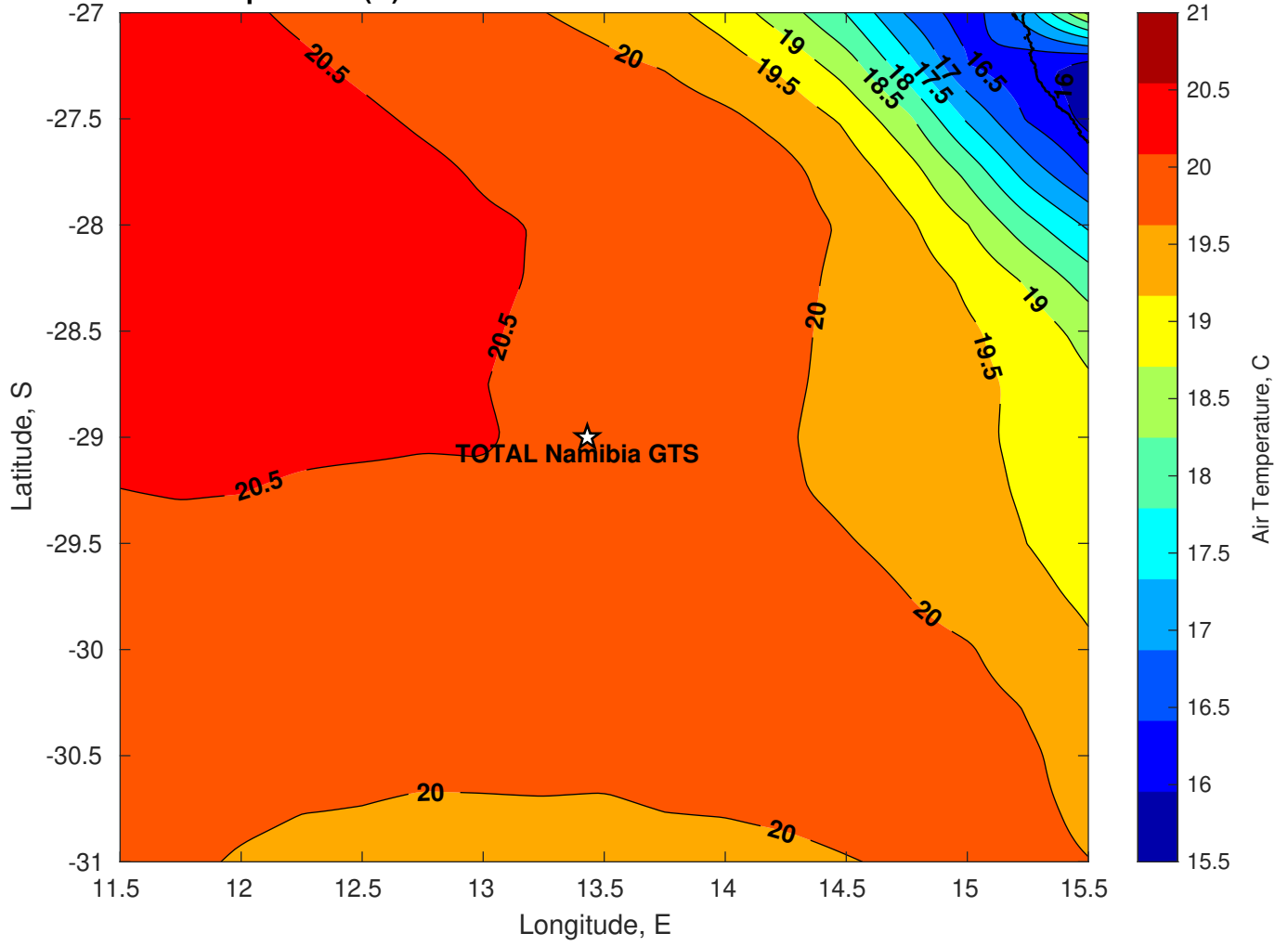
Surface Pressure (mb) for TOTAL Namibia GTS at 11-Feb-2025 00:00:00



Air Temperature (C) for TOTAL Namibia GTS at 09-Feb-2025



Air Temperature (C) for TOTAL Namibia GTS at 09-Feb-2025



Air Temperature (C) for TOTAL Namibia GTS at 09-Feb-2025

