

\*\*\*\*\*

Marine Weather Forecast for CSA (ONHYM) PPL EBS - Cote d'Ivoire  
Forecast valid as of 10-Feb-2025 2100 GMT

\*\*\*\*\*

All times are local.

Today

Winds: N, 10-15 kts.  
Waves: N, 3-4 feet, 11-12 sec.  
No currents available.

Tonight

Winds: NW, 10-15 kts.  
Waves: N, 3-4 feet, 10-11 sec.  
No currents available.

Tuesday

Winds: N, 10-15 kts.  
Waves: N, 3-4 feet, 11-12 sec.  
No currents available.

Wednesday Night

Winds: NW, 10-15 kts.  
Waves: N, 3-4 feet, 14-15 sec.  
No currents available.

Wednesday

Winds: NW, 10-15 kts.  
Waves: N, 3-4 feet, 15-16 sec.  
No currents available.

Thursday Night

Winds: NW, 10-15 kts.  
Waves: N, 3-4 feet, 12-13 sec.  
No currents available.

Thursday

Winds: NW, 10-15 kts.  
Waves: N, 3-4 feet, 13-14 sec.  
No currents available.

Friday Night

Winds: NW, 10-15 kts.  
Waves: N, 3-4 feet, 16-17 sec.  
No currents available.

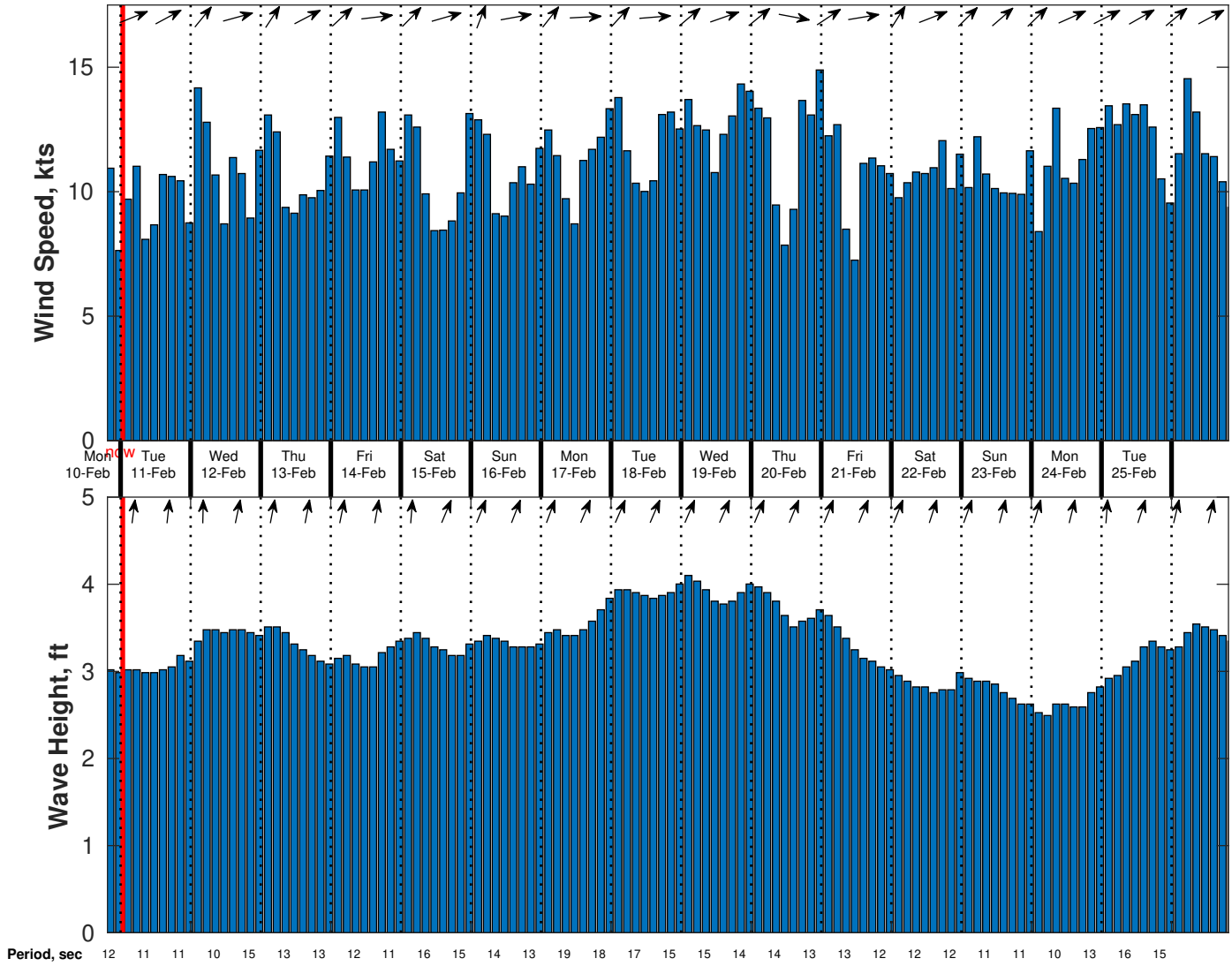
Friday

Winds: NW, 10-15 kts.  
Waves: N, 3-4 feet, 11-12 sec.  
No currents available.

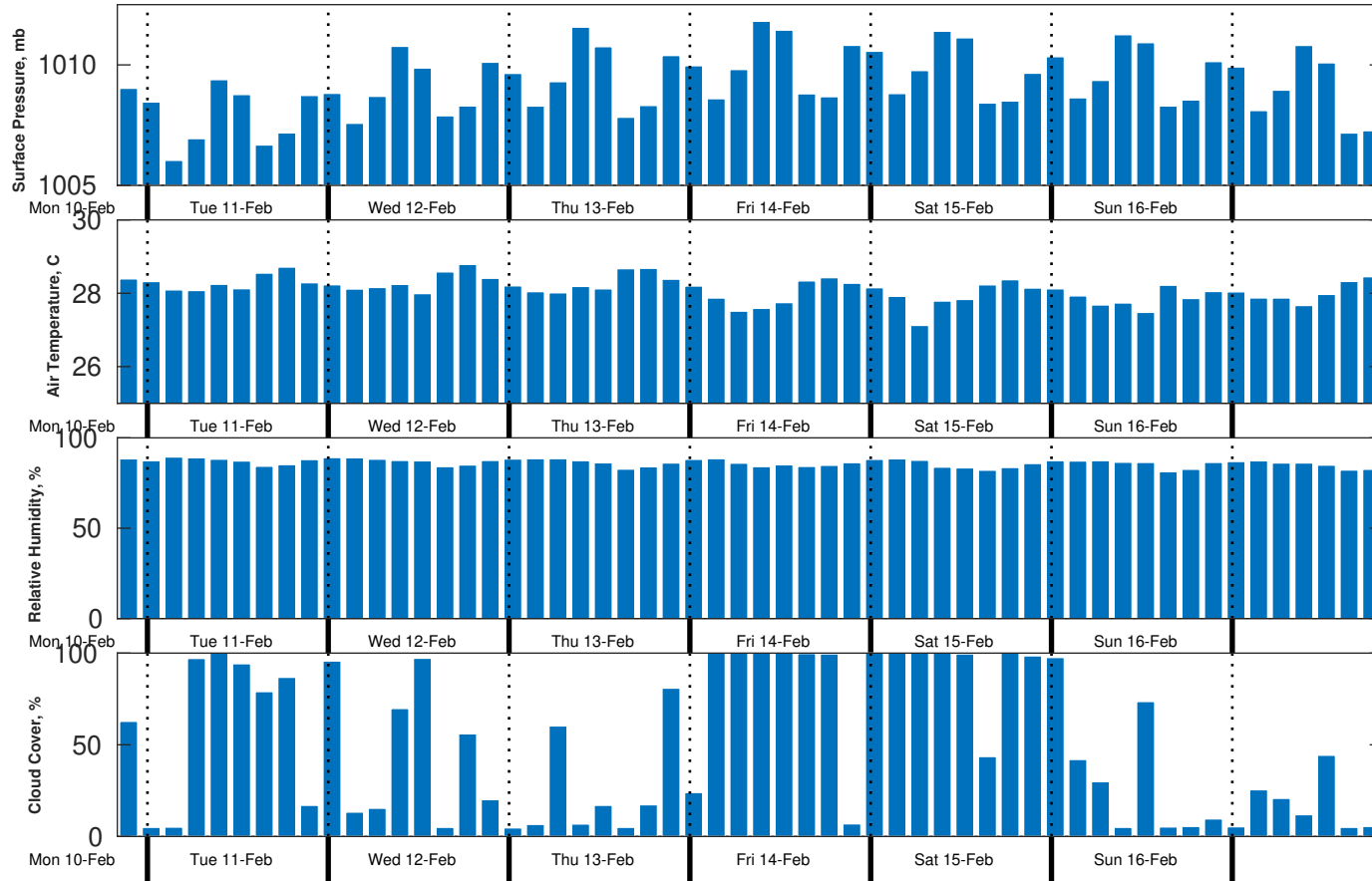
Saturday Night

Winds: N, 10-15 kts.  
Waves: N, 3-4 feet, 14-15 sec.  
No currents available.

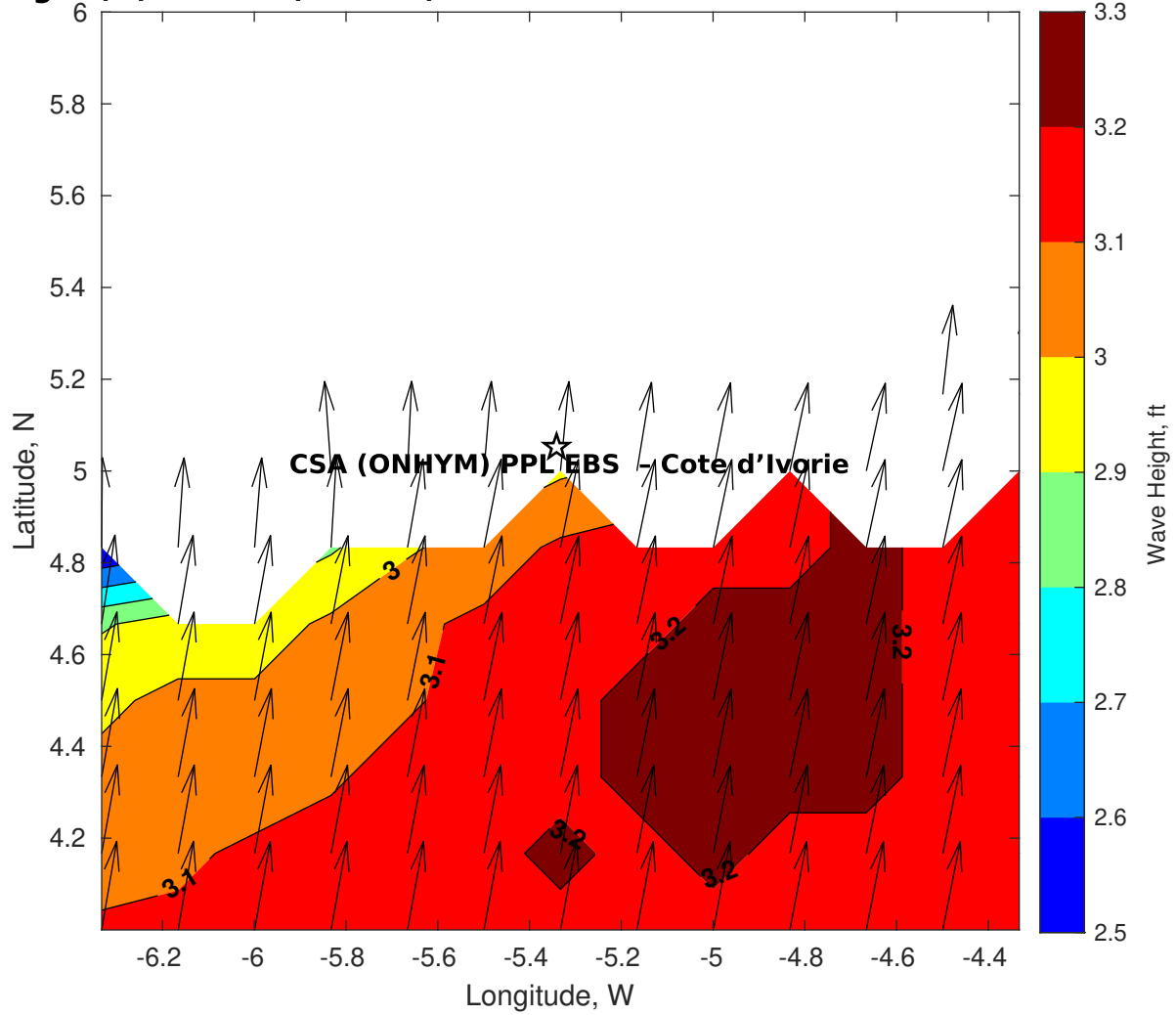
**Wind & Wave Forecast for CSA (ONHYM) PPL EBS - Cote d'Ivoire from 10-Feb-2025 19:00:00 to 26-Feb-2025 19:00:00**



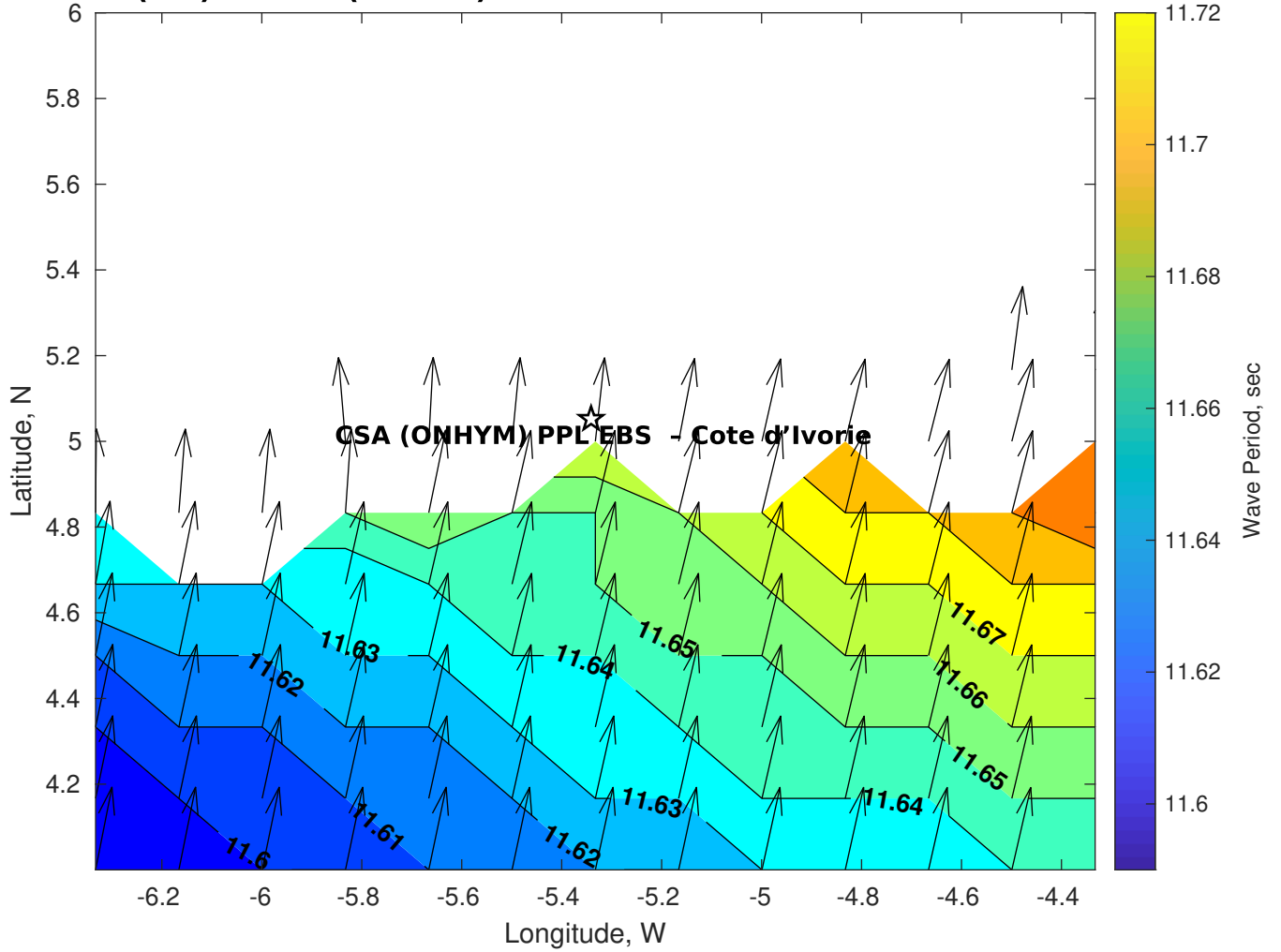
**Met Forecast for CSA (ONHYM) PPL EBS - Cote d'Ivoire from 10-Feb-2025 18:00:00 to 17-Feb-2025 18:00:00**



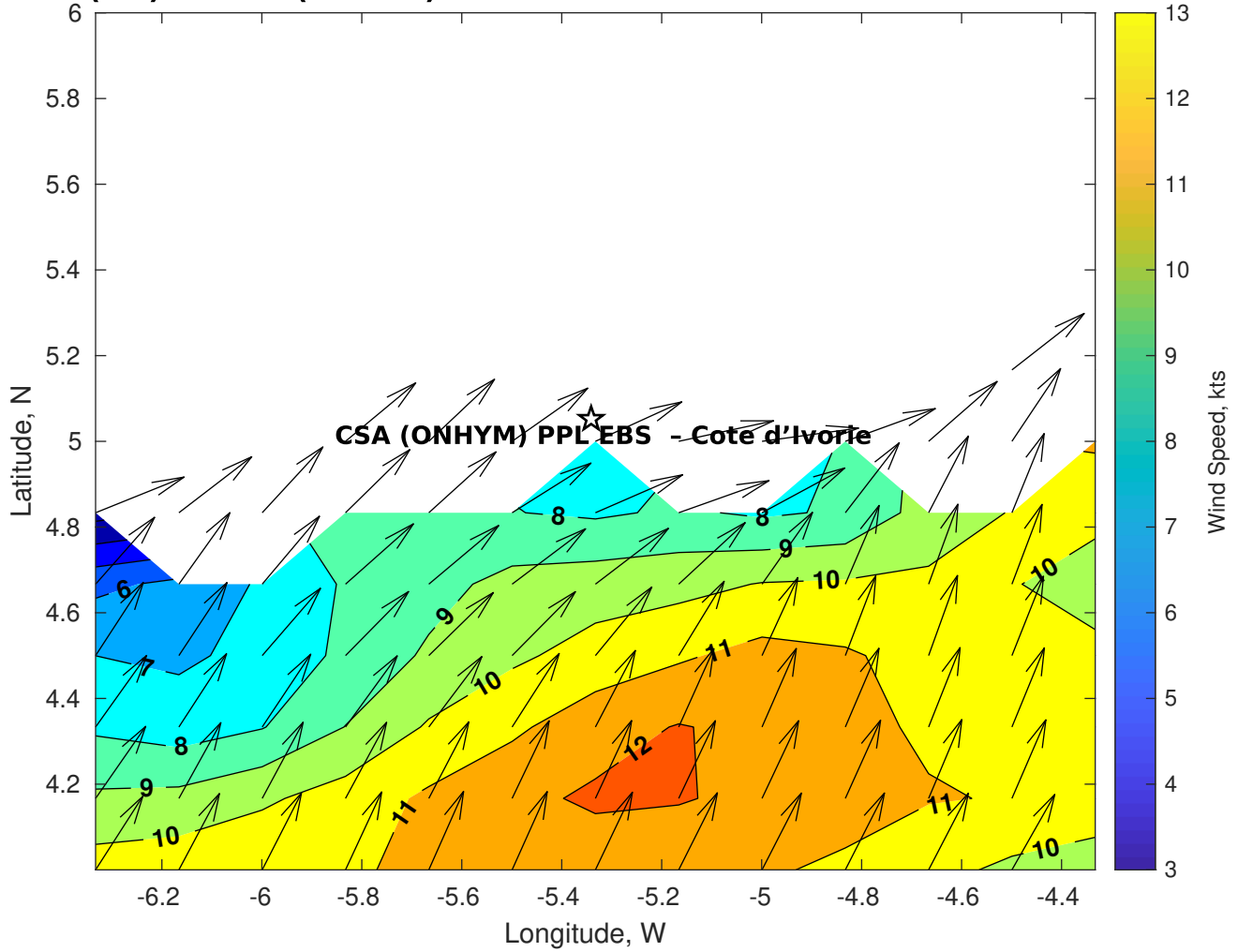
**Wave Height (ft) for CSA (ONHYM) PPL EBS - Cote d'Ivoire at 10-Feb-2025 21:00:00**



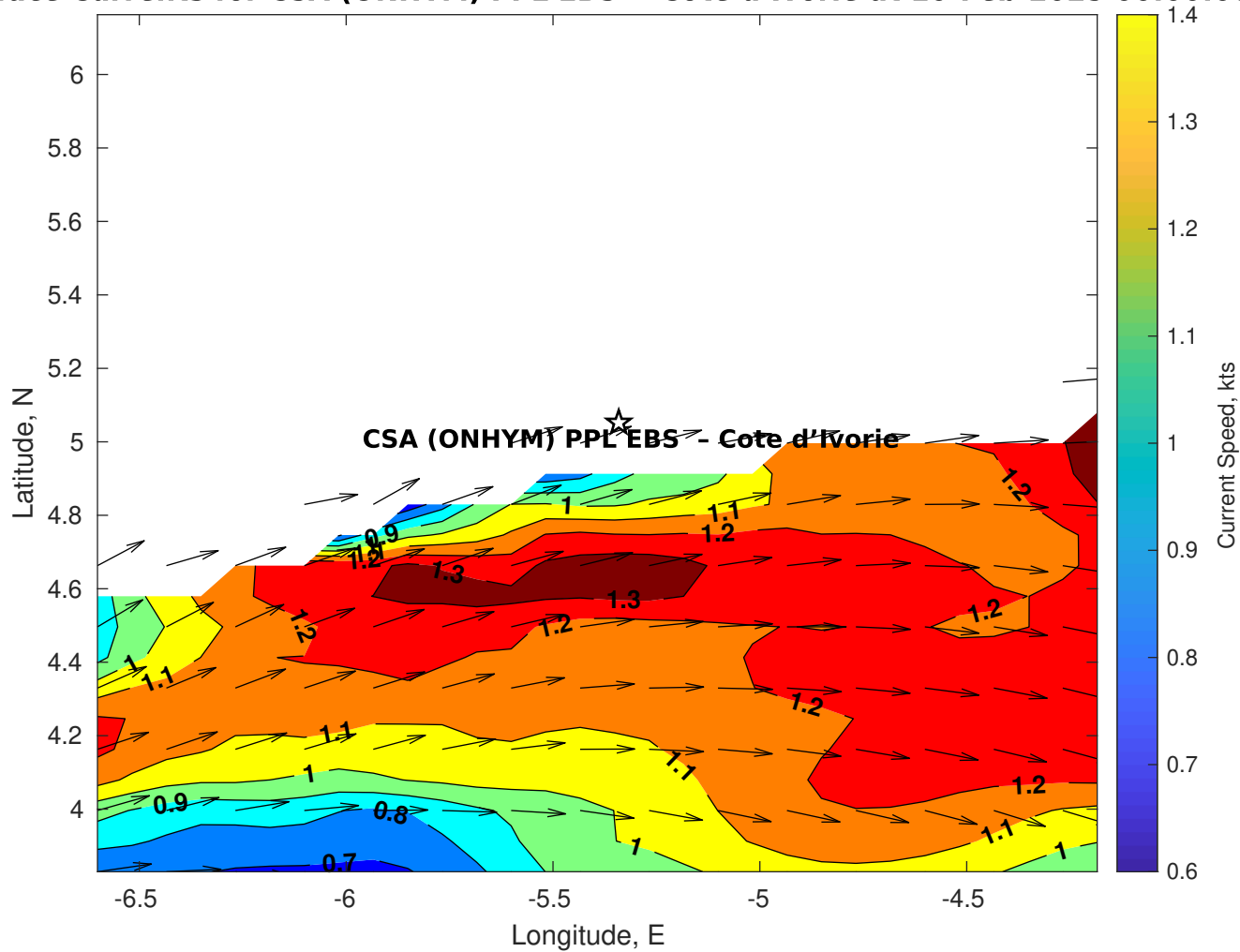
**Wave Period (sec) for CSA (ONHYM) PPL EBS - Cote d'Ivoire at 10-Feb-2025 21:00:00**



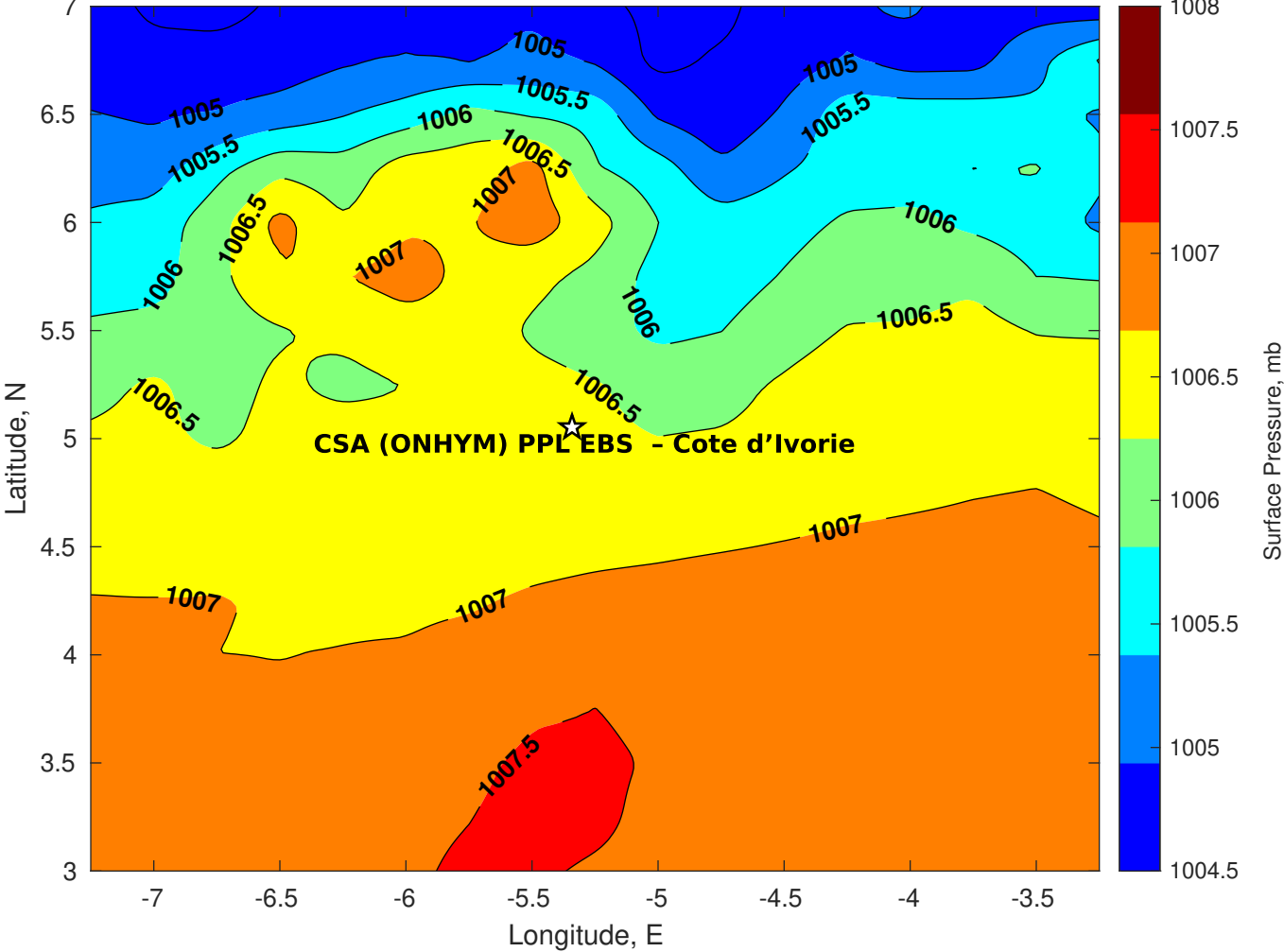
**Winds (kts) for CSA (ONHYM) PPL EBS - Cote d'Ivoire at 10-Feb-2025 21:00:00**



### Surface Currents for CSA (ONHYM) PPL EBS - Cote d'Ivoire at 10-Feb-2025 00:00:00

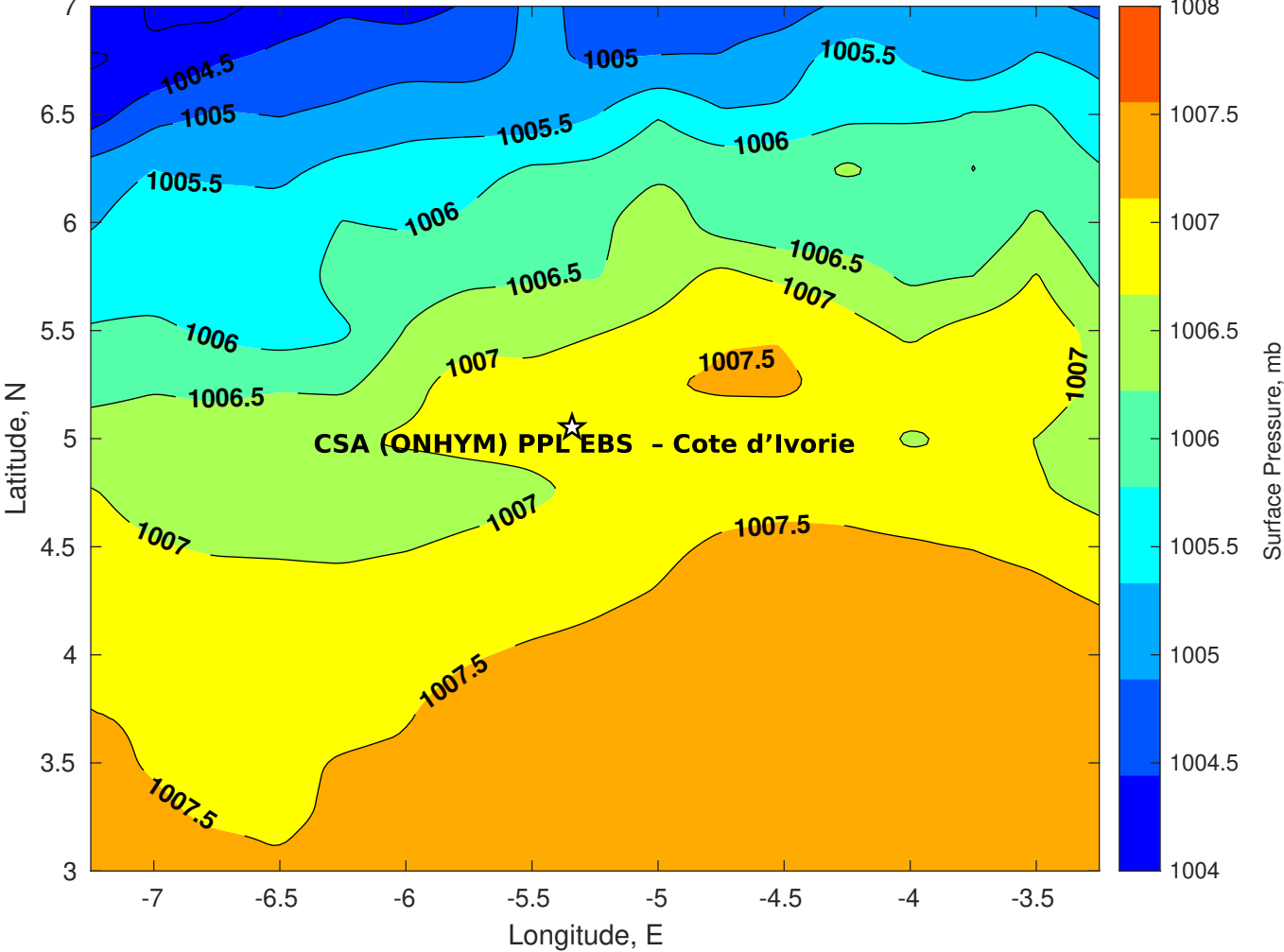


Surface Pressure (mb) for CSA (ONHYM) PPL EBS - Cote d'Ivoire at 10-Feb-2025 18:00:00

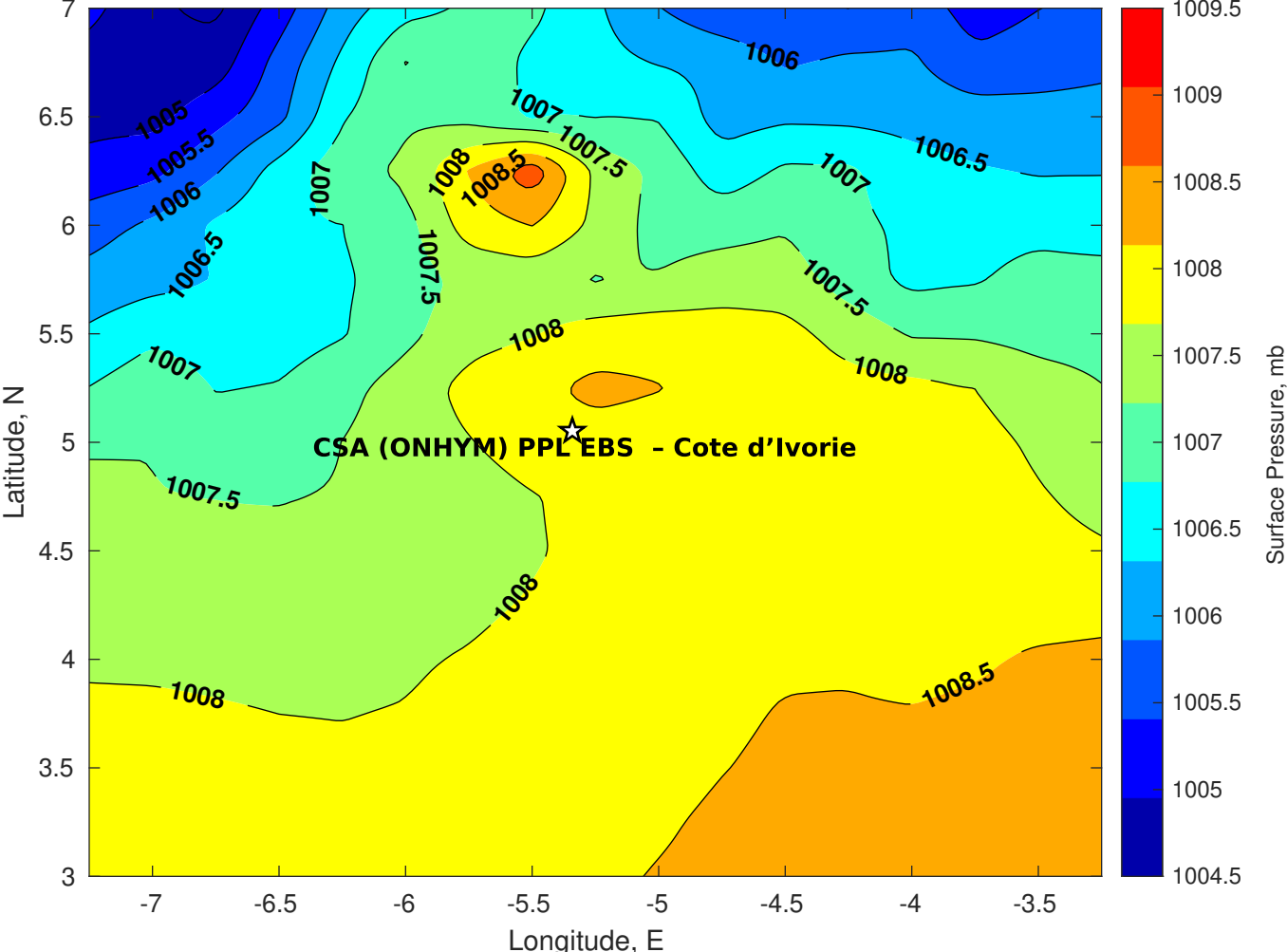




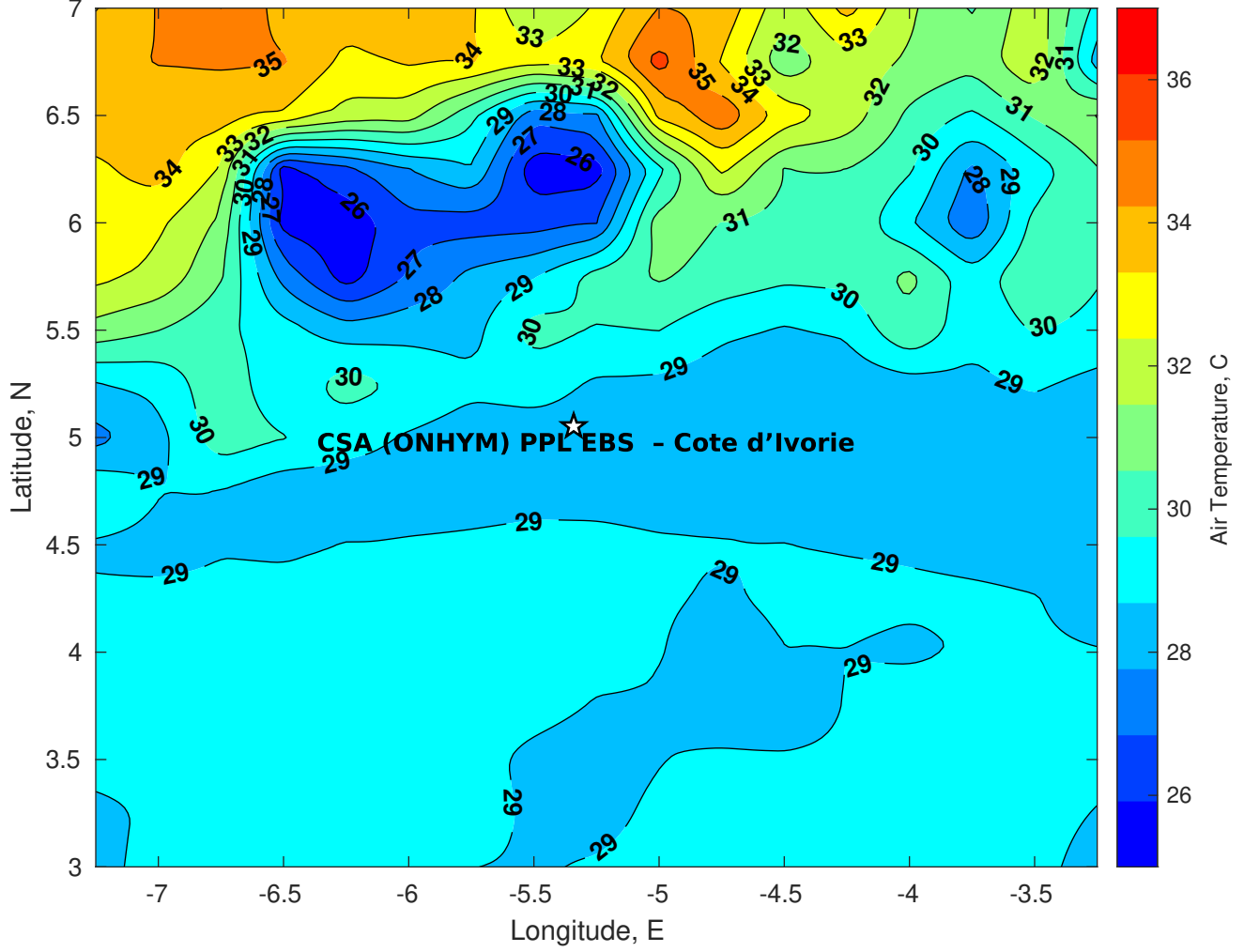
Surface Pressure (mb) for CSA (ONHYM) PPL EBS - Cote d'Ivoire at 11-Feb-2025 18:00:00



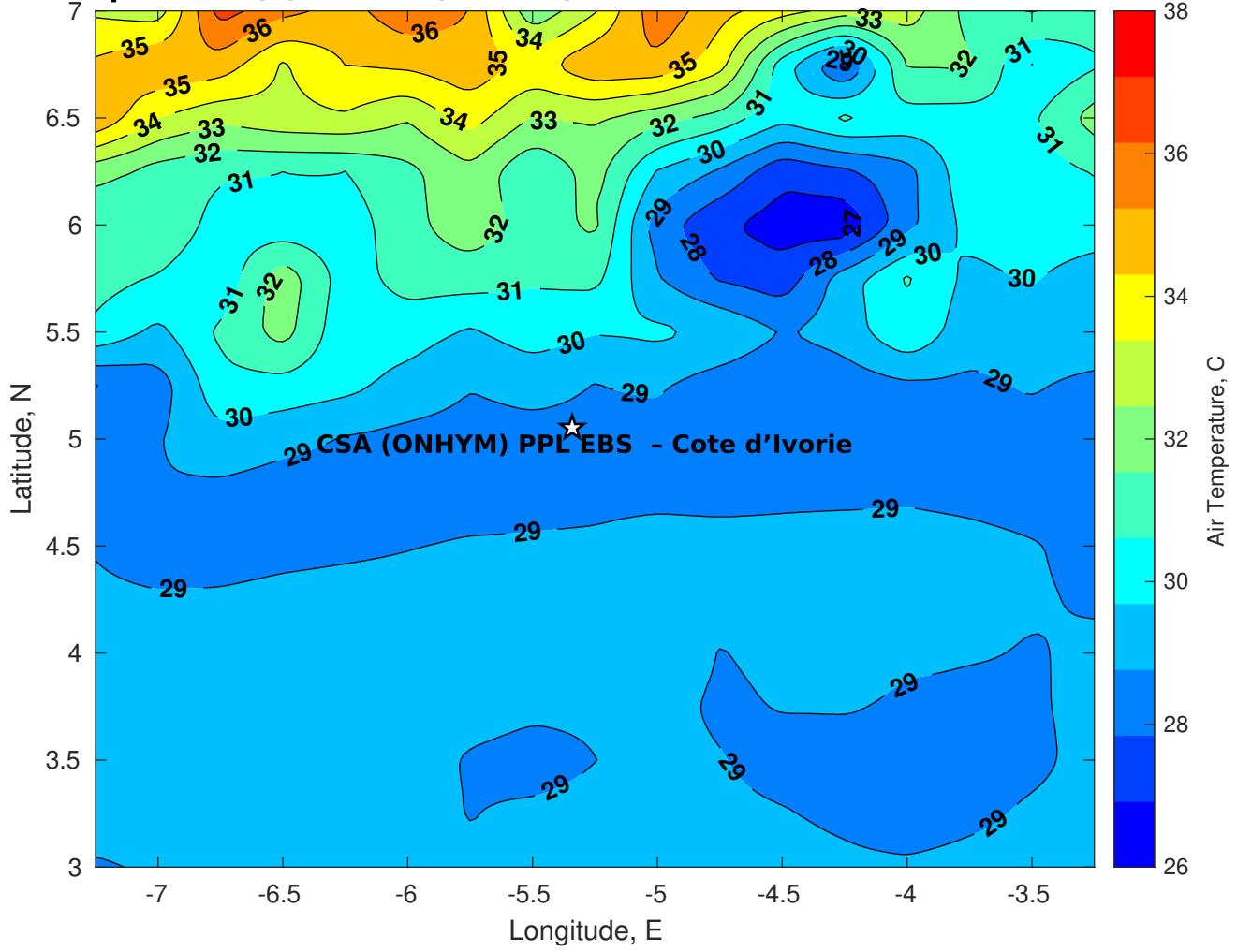
Surface Pressure (mb) for CSA (ONHYM) PPL EBS - Cote d'Ivoire at 12-Feb-2025 18:00:00



**Air Temperature (C) for CSA (ONHYM) PPL EBS - Cote d'Ivoire at 10-Feb-2025**



**Air Temperature (C) for CSA (ONHYM) PPL EBS - Cote d'Ivoire at 10-Feb-2025**



**Air Temperature (C) for CSA (ONHYM) PPL EBS - Cote d'Ivoire at 10-Feb-2025**

