

\*\*\*\*\*

Marine Weather Forecast for CSA (ONHYM) PPL EBS - Nigeria

Forecast valid as of 10-Feb-2025 2100 GMT

\*\*\*\*\*

All times are local.

Today

Winds: NW, 5-10 kts.

Waves: N, 3-4 feet, 11-12 sec.

Currents: NE, less than 0.5 knot.

Tonight

Winds: NW, 10-15 kts.

Waves: N, 3-4 feet, 10-11 sec.

Currents: NE, 0.5-1 kts.

Tuesday

Winds: NW, 10-15 kts.

Waves: N, 3-4 feet, 11-12 sec.

Currents: NE, 0.5-1 kts.

Wednesday Night

Winds: NW, 10-15 kts.

Waves: N, 3-4 feet, 14-15 sec.

Currents: NE, 0.5-1 kts.

Wednesday

Winds: NW, 10-15 kts.

Waves: N, 3-4 feet, 15-16 sec.

Currents: E, 0.5-1 kts.

Thursday Night

Winds: NW, 5-10 kts.

Waves: N, 3-4 feet, 12-13 sec.

Currents: E, less than 0.5 knot.

Thursday

Winds: NW, 10-15 kts.

Waves: N, 3-4 feet, 13-14 sec.

Currents: E, less than 0.5 knot.

Friday Night

Winds: NW, 10-15 kts.

Waves: N, 3-4 feet, 10-11 sec.

Currents: E, less than 0.5 knot.

Friday

Winds: NW, 10-15 kts.

Waves: N, 3-4 feet, 11-12 sec.

Currents: E, less than 0.5 knot.

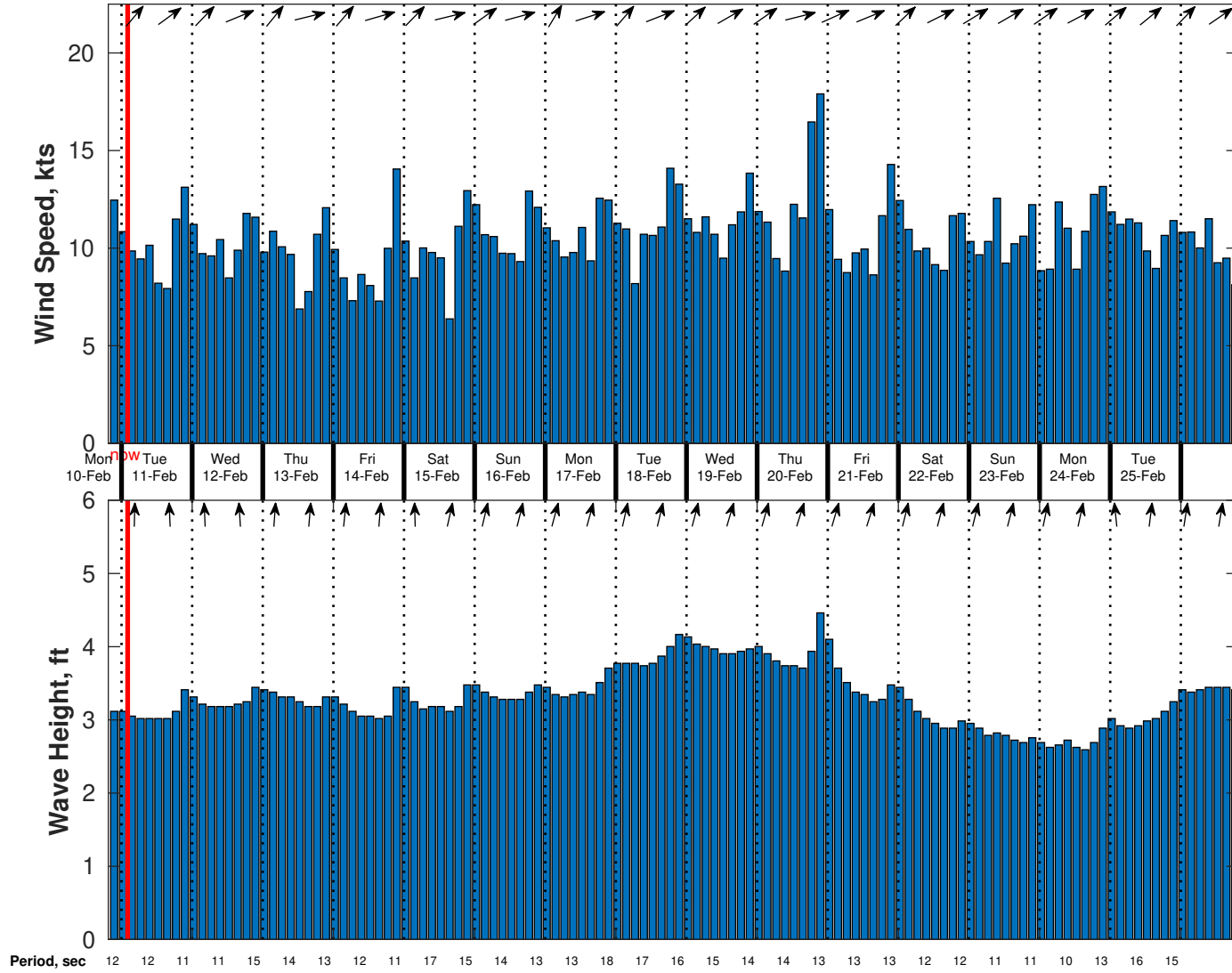
Saturday Night

Winds: NW, 10-15 kts.

Waves: N, 3-4 feet, 15-16 sec.

Currents: E, less than 0.5 knot.

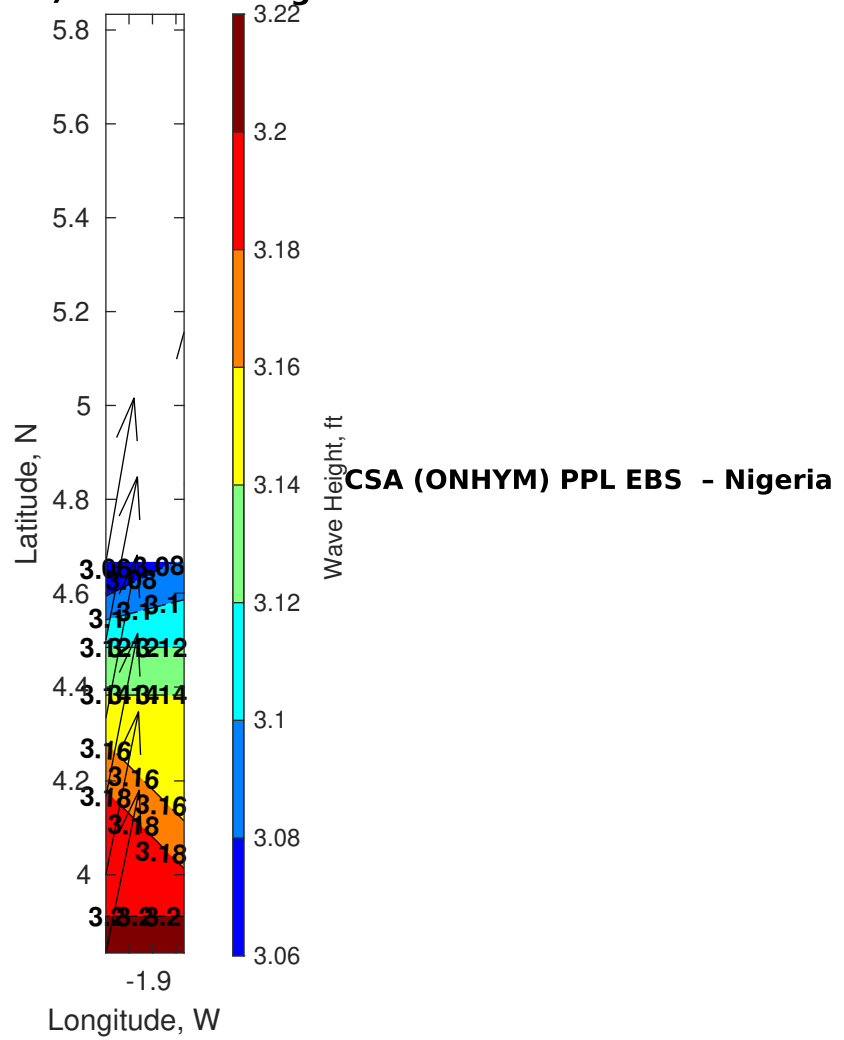
**Wind & Wave Forecast for CSA (ONHYM) PPL EBS - Nigeria from 10-Feb-2025 20:00:00 to 26-Feb-2025 20:00:00**



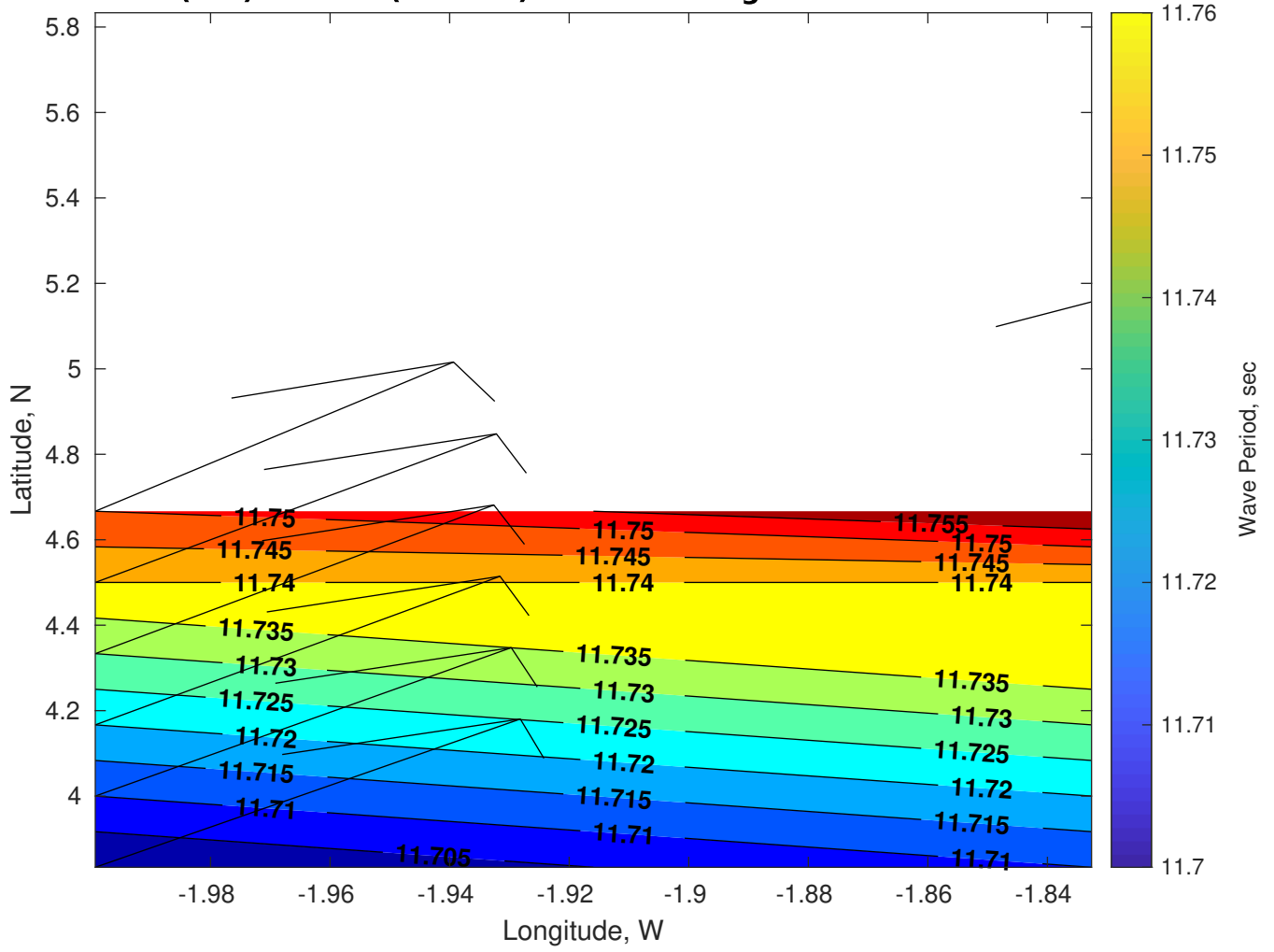
**Met Forecast for CSA (ONHYM) PPL EBS - Nigeria for 10-Feb-2025 2100 GMT**

**No Atmospheric Data**

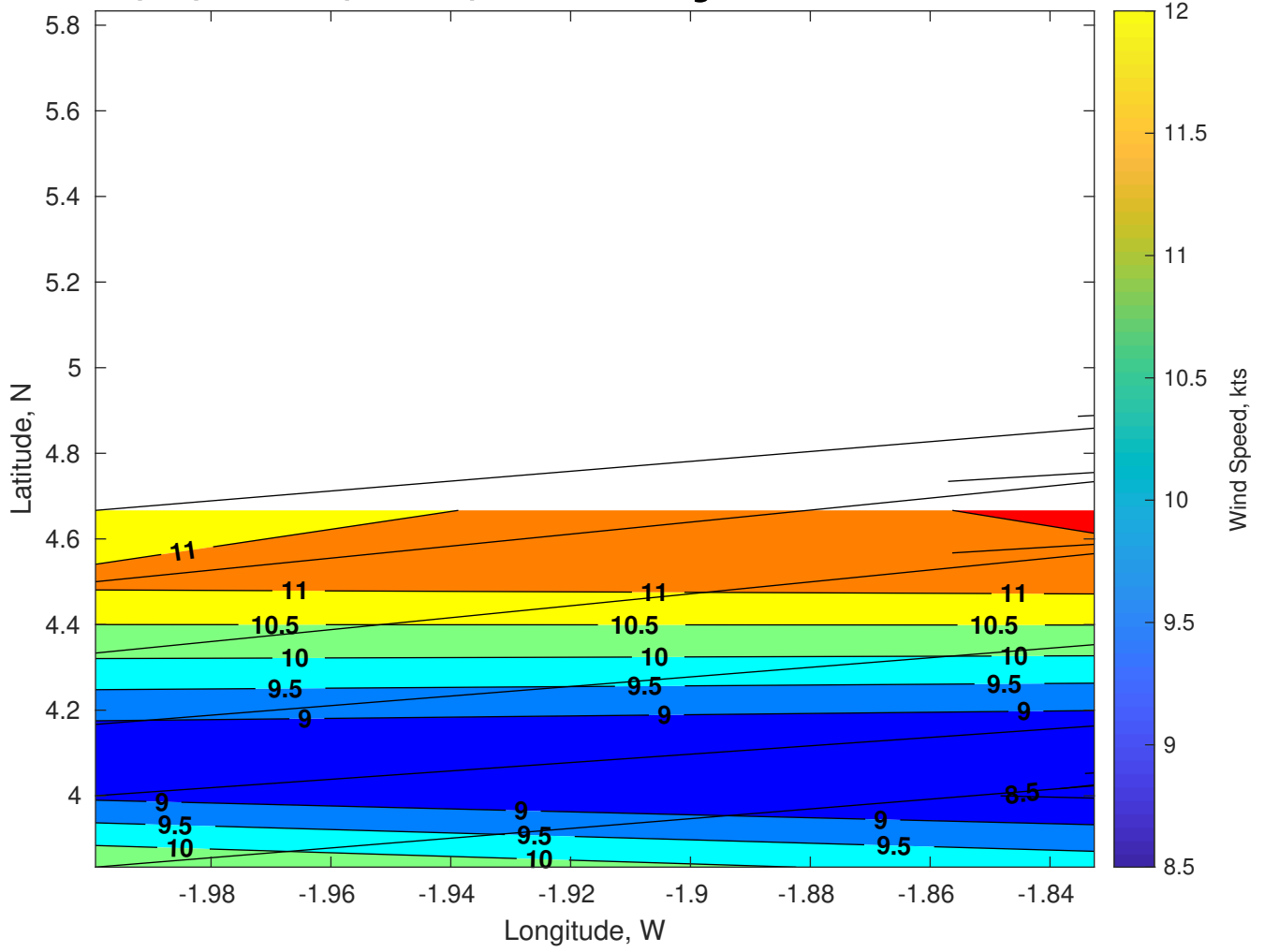
# Wave Height (ft) for CSA (ONHYM) PPL EBS - Nigeria at 10-Feb-2025 21:00:00



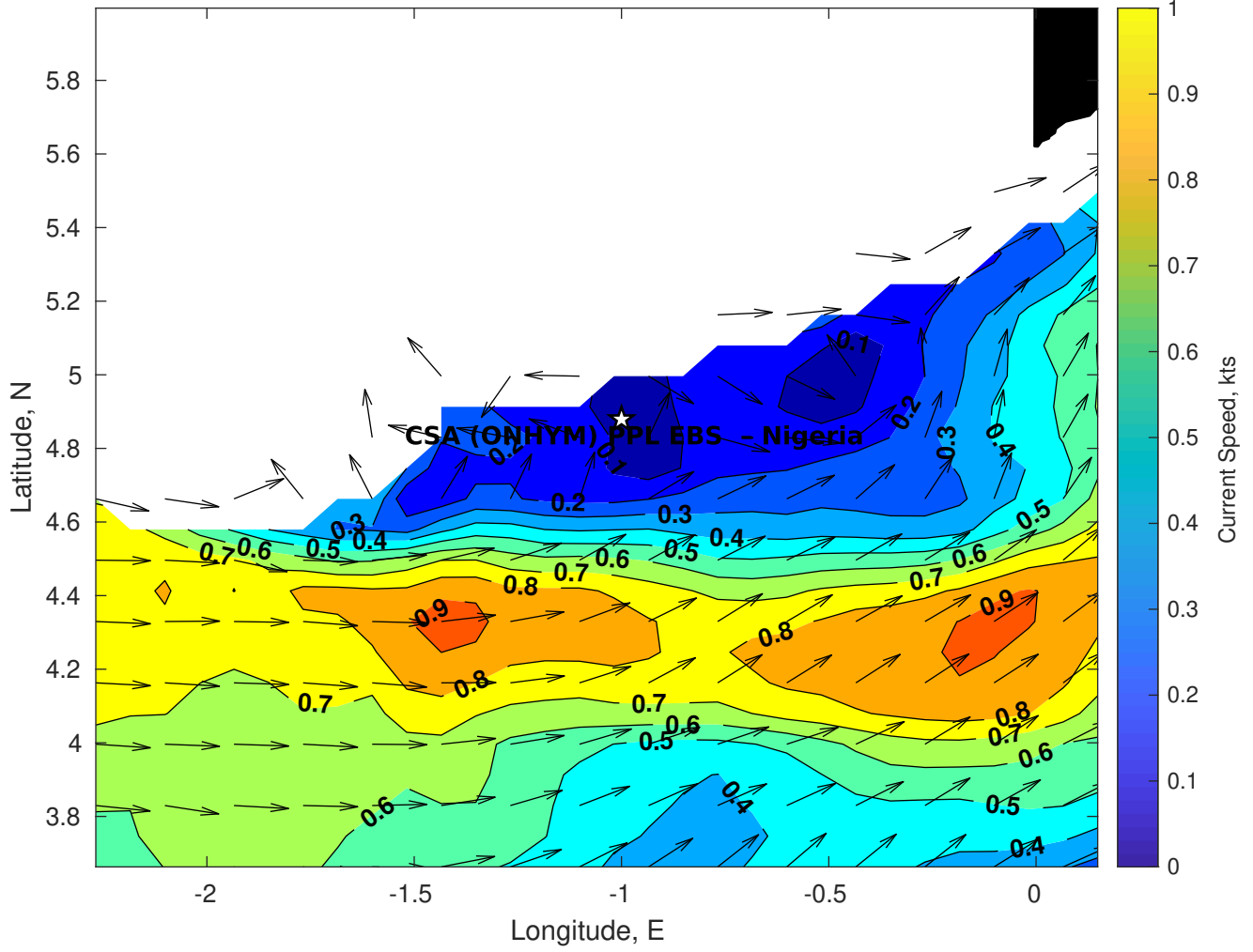
**Wave Period (sec) for CSA (ONHYM) PPL EBS - Nigeria at 10-Feb-2025 21:00:00**



### Winds (kts) for CSA (ONHYM) PPL EBS - Nigeria at 10-Feb-2025 21:00:00



### Surface Currents for CSA (ONHYM) PPL EBS - Nigeria at 10-Feb-2025 00:00:00





**No Surface Pressure Data**