
Marine Weather Forecast for CSA (ONHYM) PPL EBS - Western Sahara

Forecast valid as of 10-Feb-2025 2100 GMT

All times are local.

Today

Winds: NE, 15-20 kts.

Waves: NW, 4-5 feet, 11-12 sec.

Currents: SW, less than 0.5 knot.

Tonight

Winds: NE, 20-25 kts.

Waves: NW, 5-6 feet, 10-11 sec.

Currents: SW, less than 0.5 knot.

Tuesday

Winds: NE, 15-20 kts.

Waves: NW, 5-6 feet, 10-11 sec.

Currents: SW, less than 0.5 knot.

Wednesday Night

Winds: NE, 20-25 kts.

Waves: N, 6-7 feet, 12-13 sec.

Currents: SW, 0.5-1 kts.

Wednesday

Winds: NE, 20-25 kts.

Waves: NW, 5-6 feet, 13-14 sec.

Currents: SW, 0.5-1 kts.

Thursday Night

Winds: NE, 20-25 kts.

Waves: NW, 6-7 feet, 16-17 sec.

Currents: SW, 0.5-1 kts.

Thursday

Winds: NE, 20-25 kts.

Waves: N, 6-7 feet, 17-18 sec.

Currents: SW, 0.5-1 kts.

Friday Night

Winds: N, 15-20 kts.

Waves: NW, 6-7 feet, 13-14 sec.

Currents: SW, 0.5-1 kts.

Friday

Winds: NE, 15-20 kts.

Waves: NW, 6-7 feet, 14-15 sec.

Currents: SW, 0.5-1 kts.

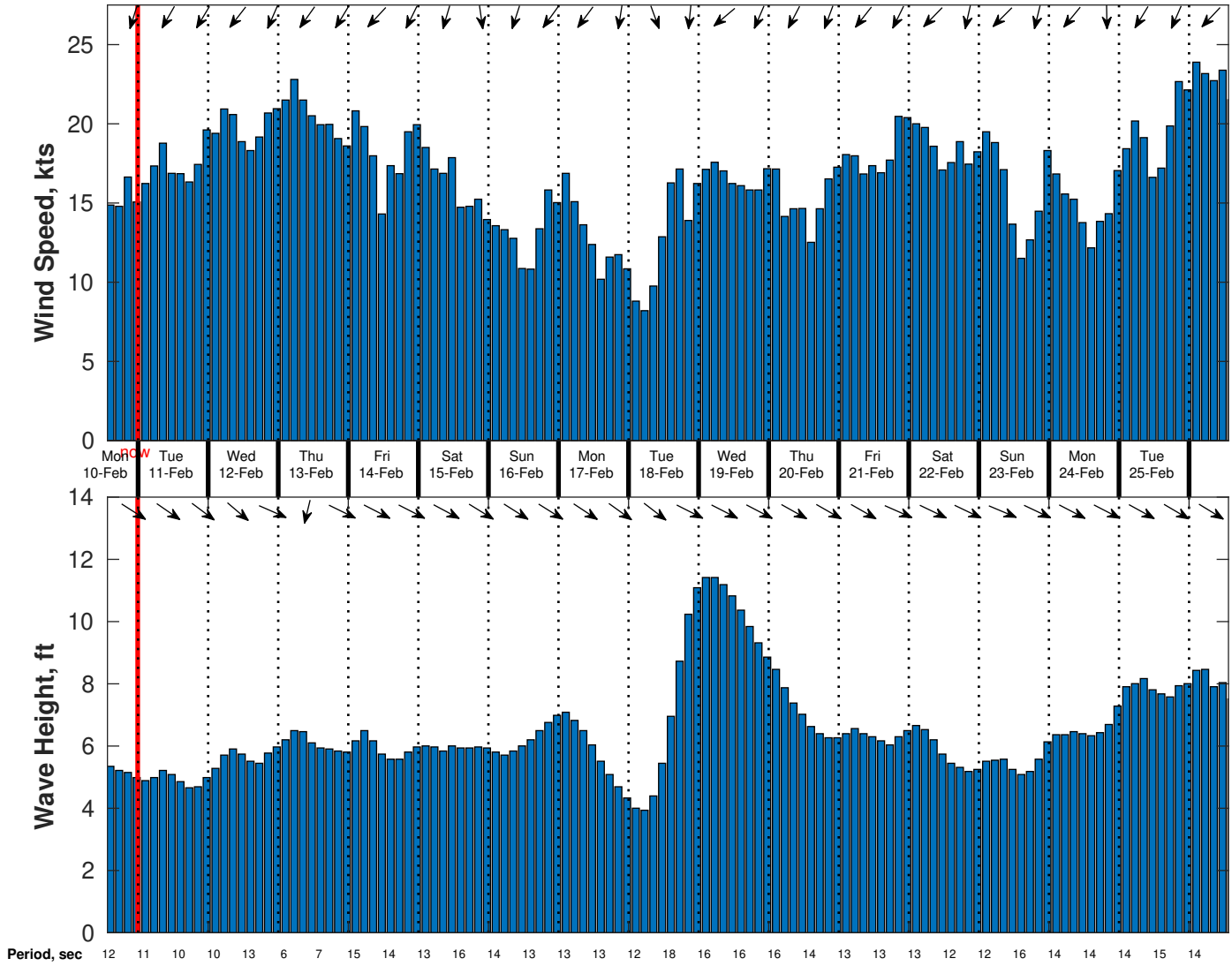
Saturday Night

Winds: N, 10-15 kts.

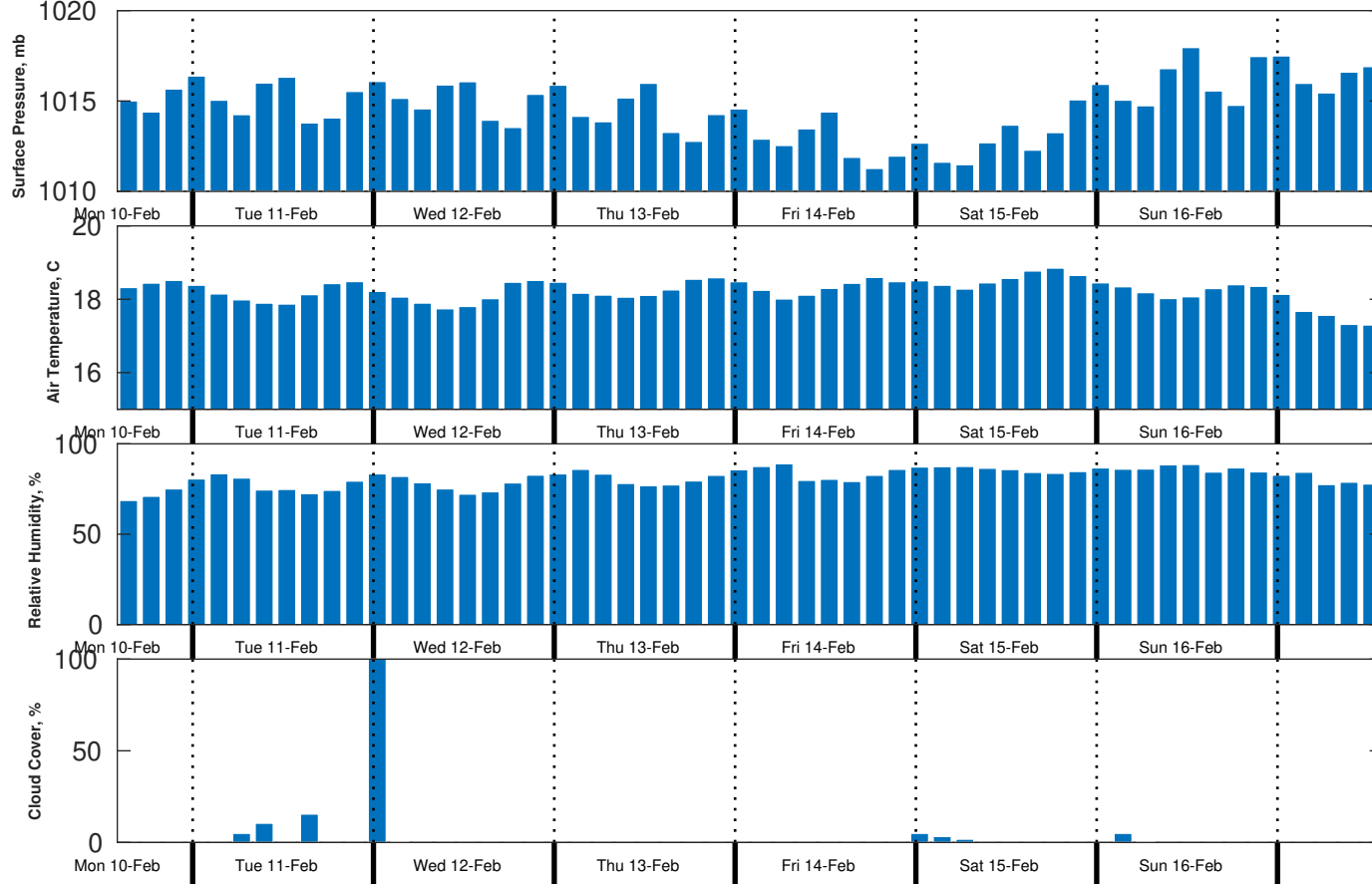
Waves: NW, 5-6 feet, 14-15 sec.

Currents: SW, 0.5-1 kts.

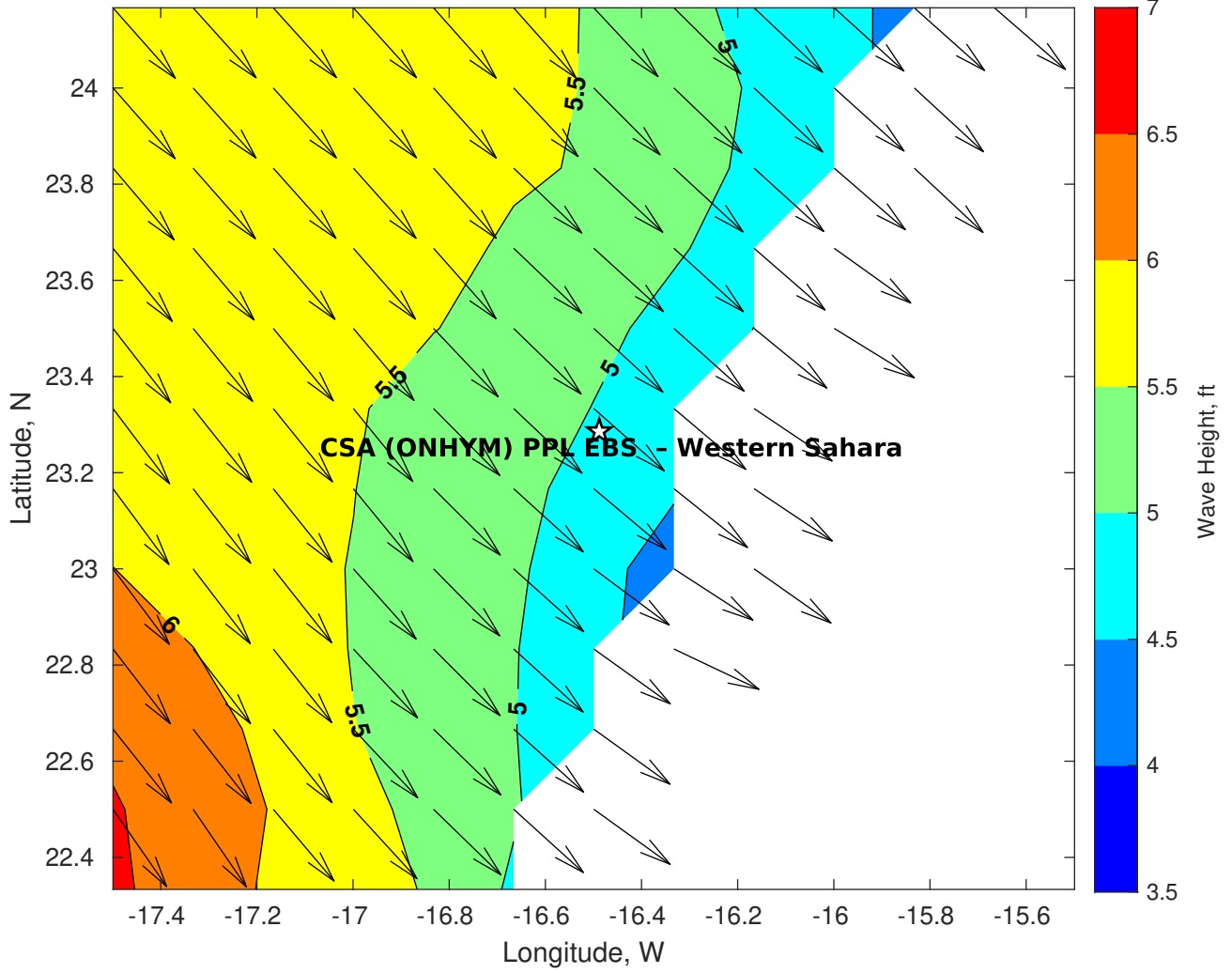
Wind & Wave Forecast for CSA (ONHYM) PPL EBS - Western Sahara from 10-Feb-2025 13:00:00 to 26-Feb-2025 13:00:00



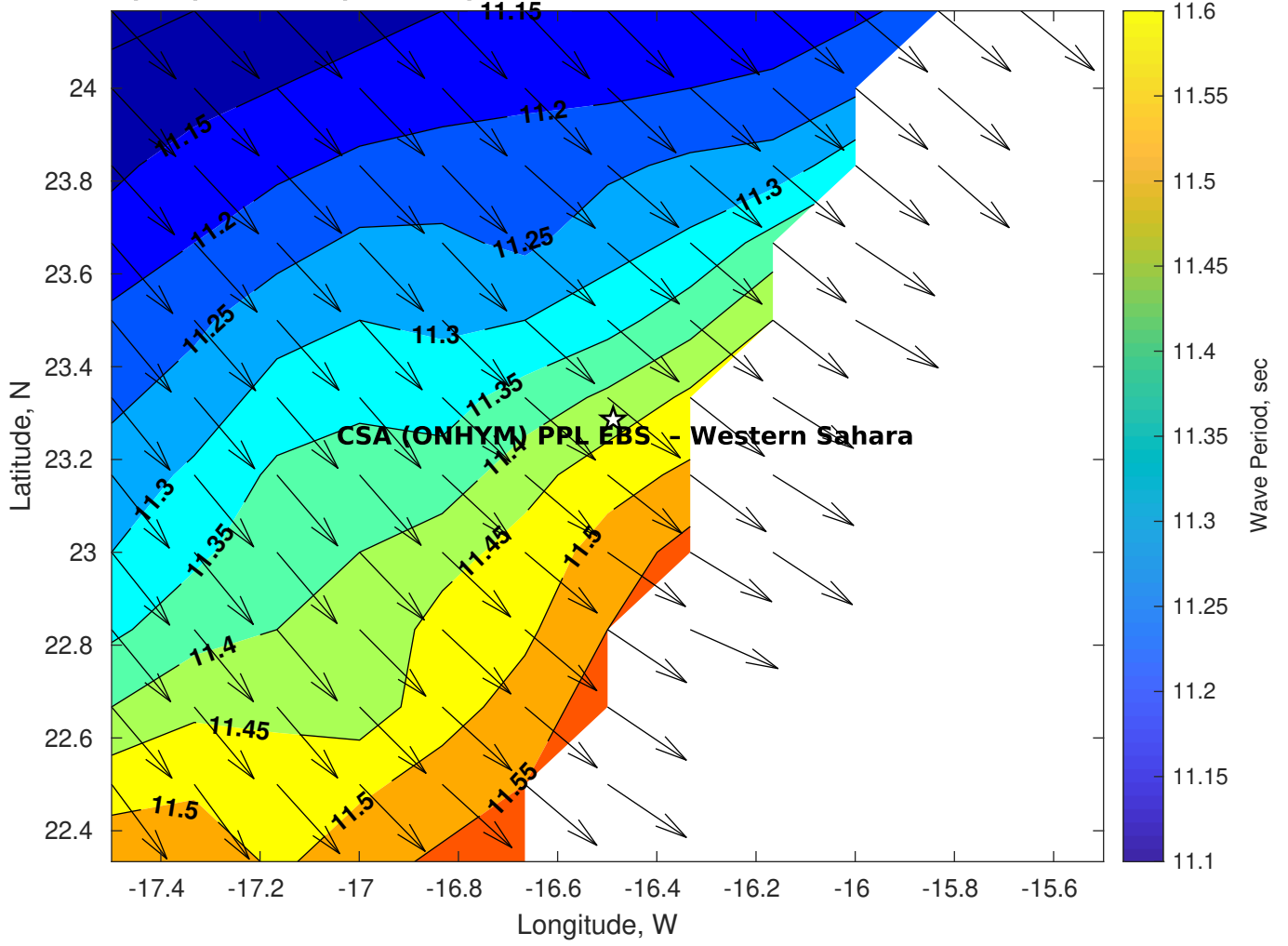
Met Forecast for CSA (ONHYM) PPL EBS - Western Sahara from 10-Feb-2025 12:00:00 to 17-Feb-2025 12:00:00



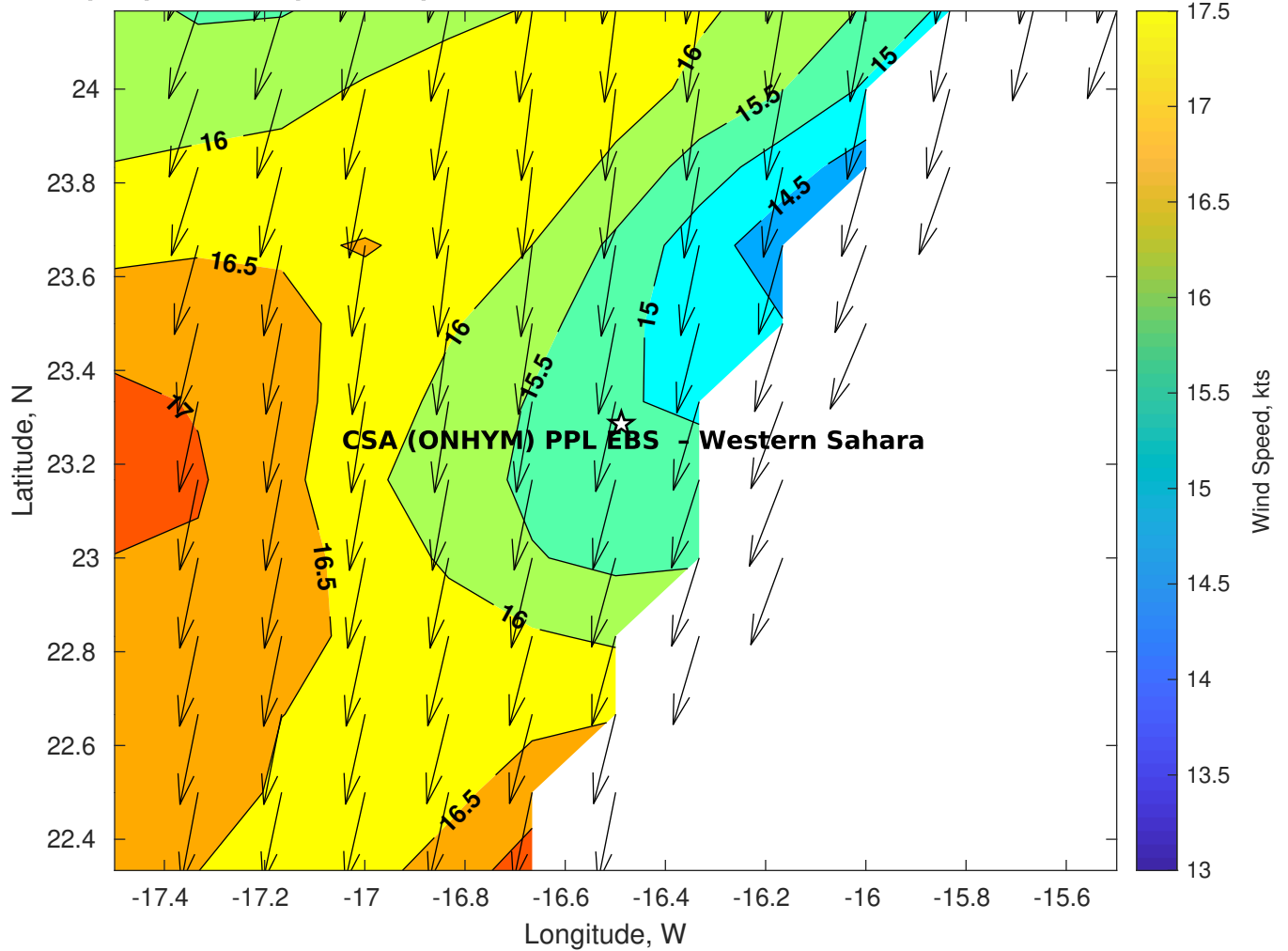
Wave Height (ft) for CSA (ONHYM) PPL EBS - Western Sahara at 10-Feb-2025 21:00:00



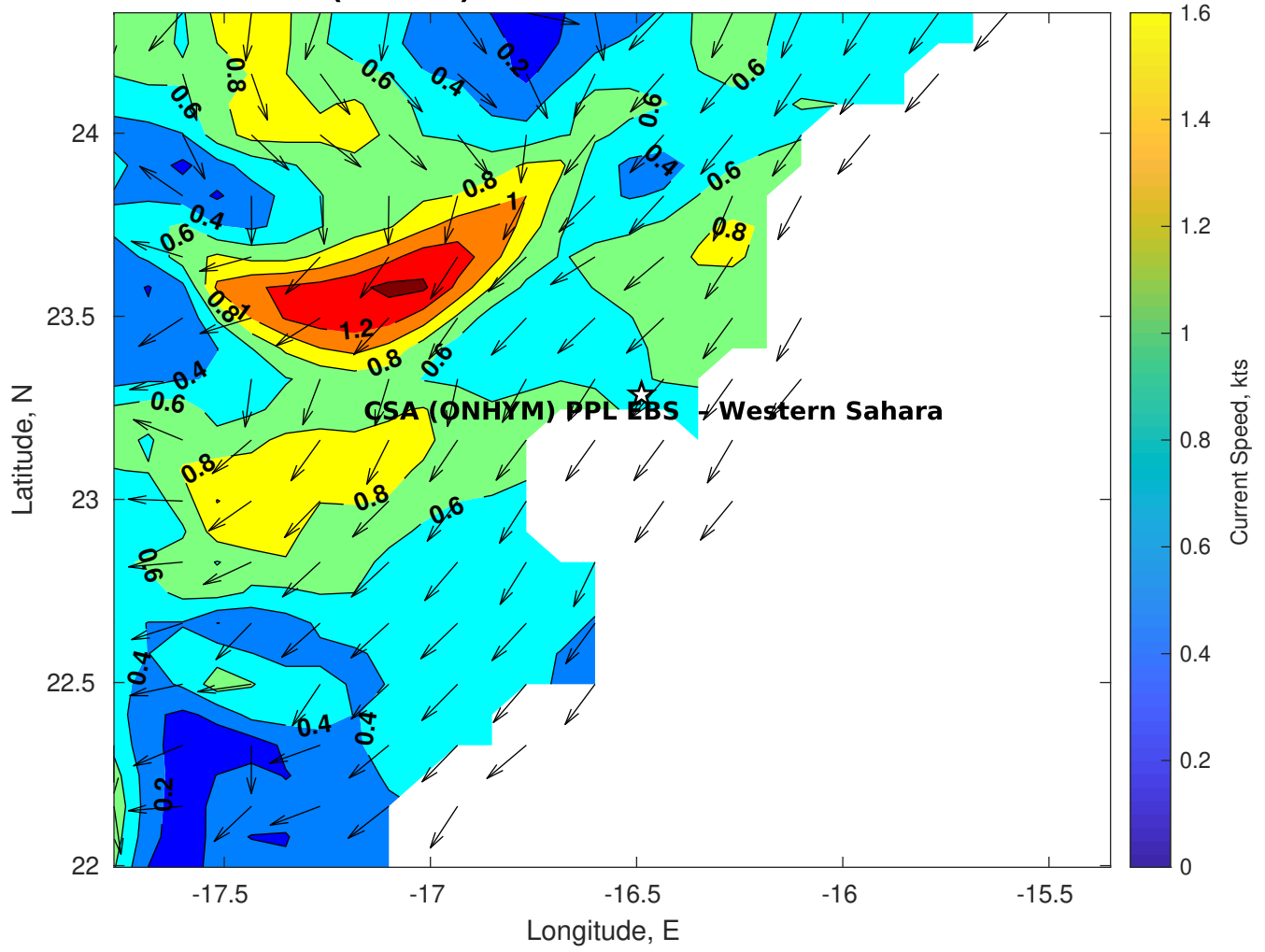
Wave Period (sec) for CSA (ONHYM) PPL EBS - Western Sahara at 10-Feb-2025 21:00:00



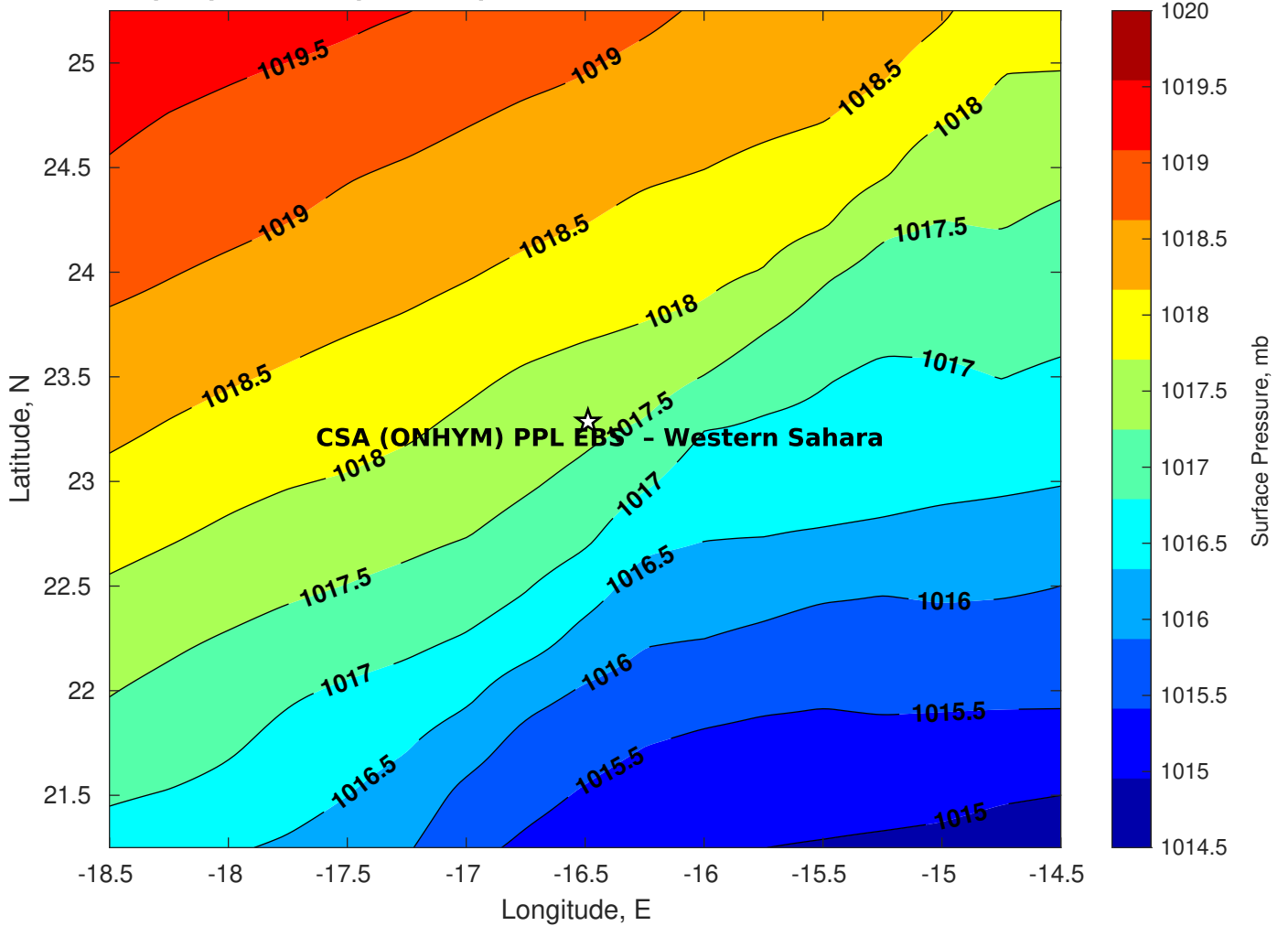
Winds (kts) for CSA (ONHYM) PPL EBS - Western Sahara at 10-Feb-2025 21:00:00



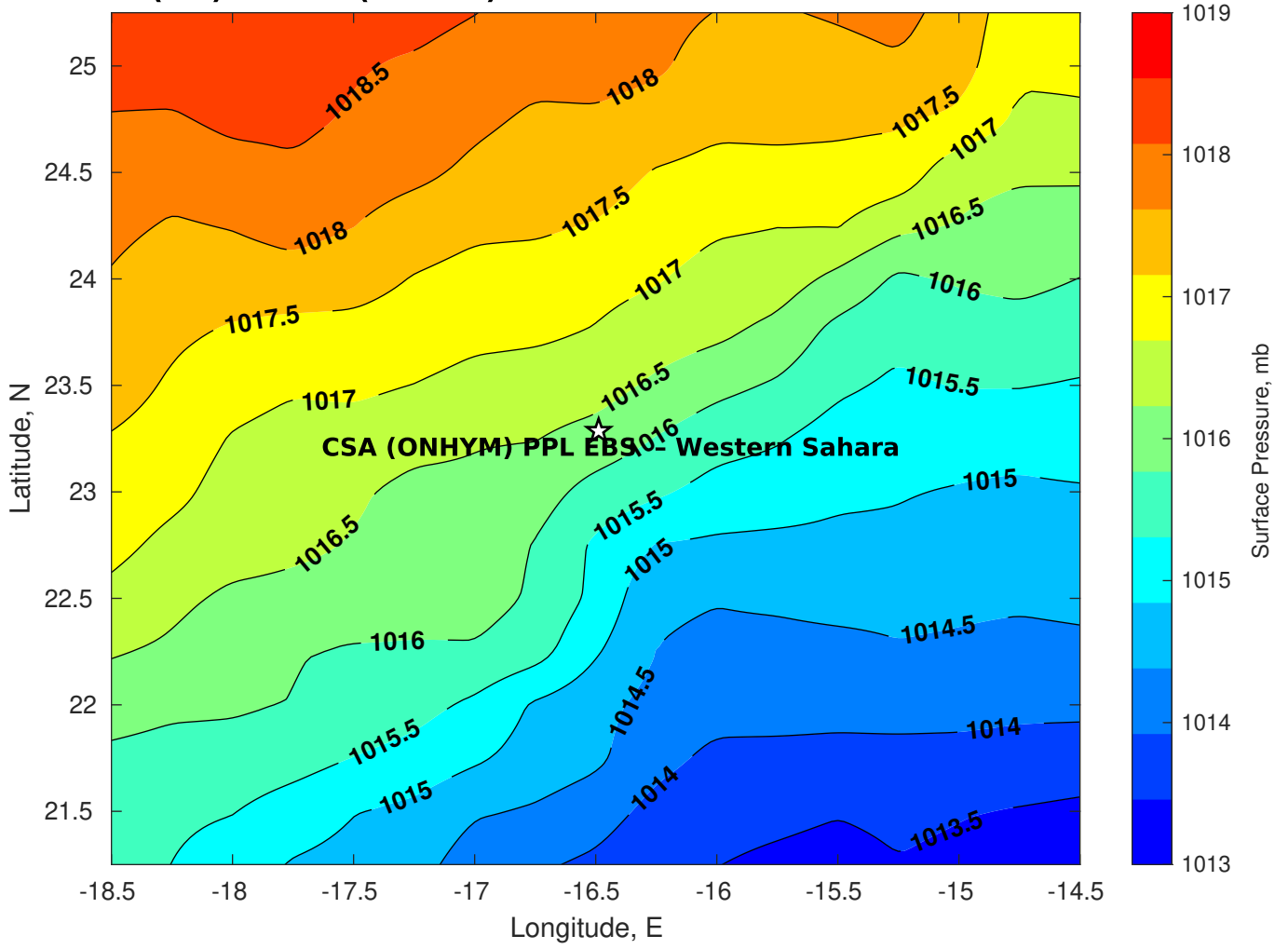
Surface Currents for CSA (ONHYM) PPL EBS - Western Sahara at 10-Feb-2025 00:00:00



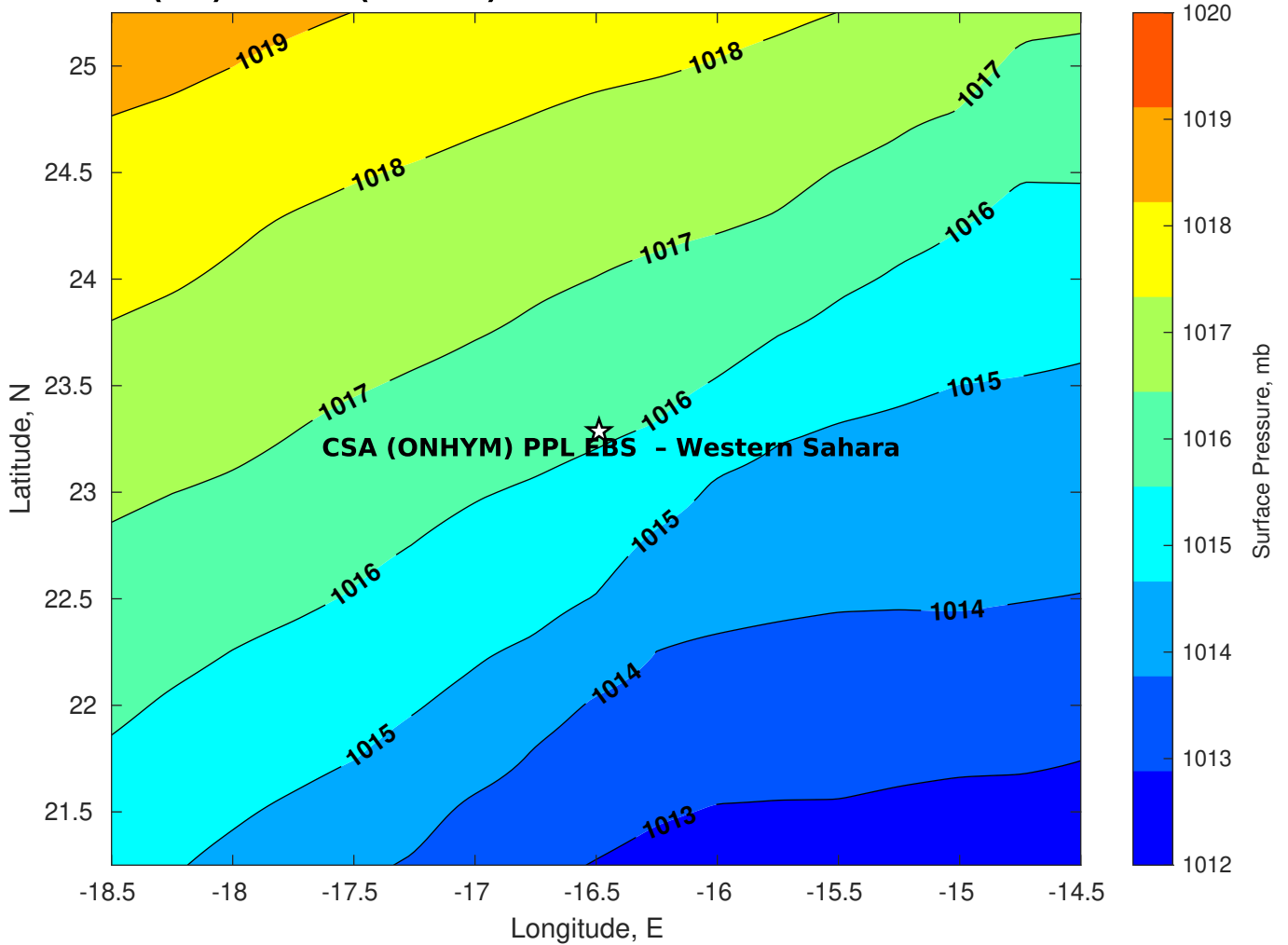
Surface Pressure (mb) for CSA (ONHYM) PPL EBS - Western Sahara at 10-Feb-2025 12:00:00



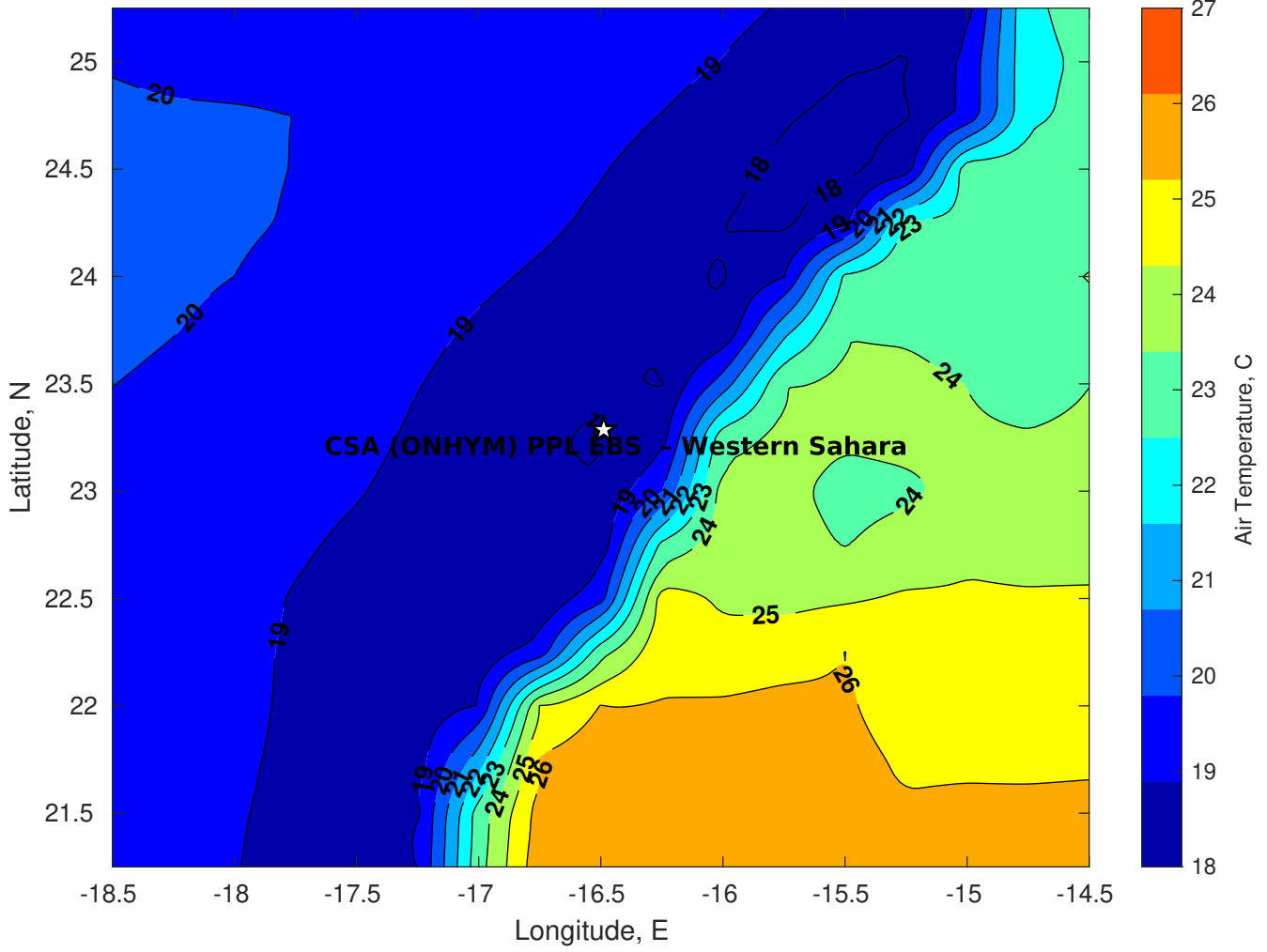
Surface Pressure (mb) for CSA (ONHYM) PPL EBS - Western Sahara at 11-Feb-2025 12:00:00



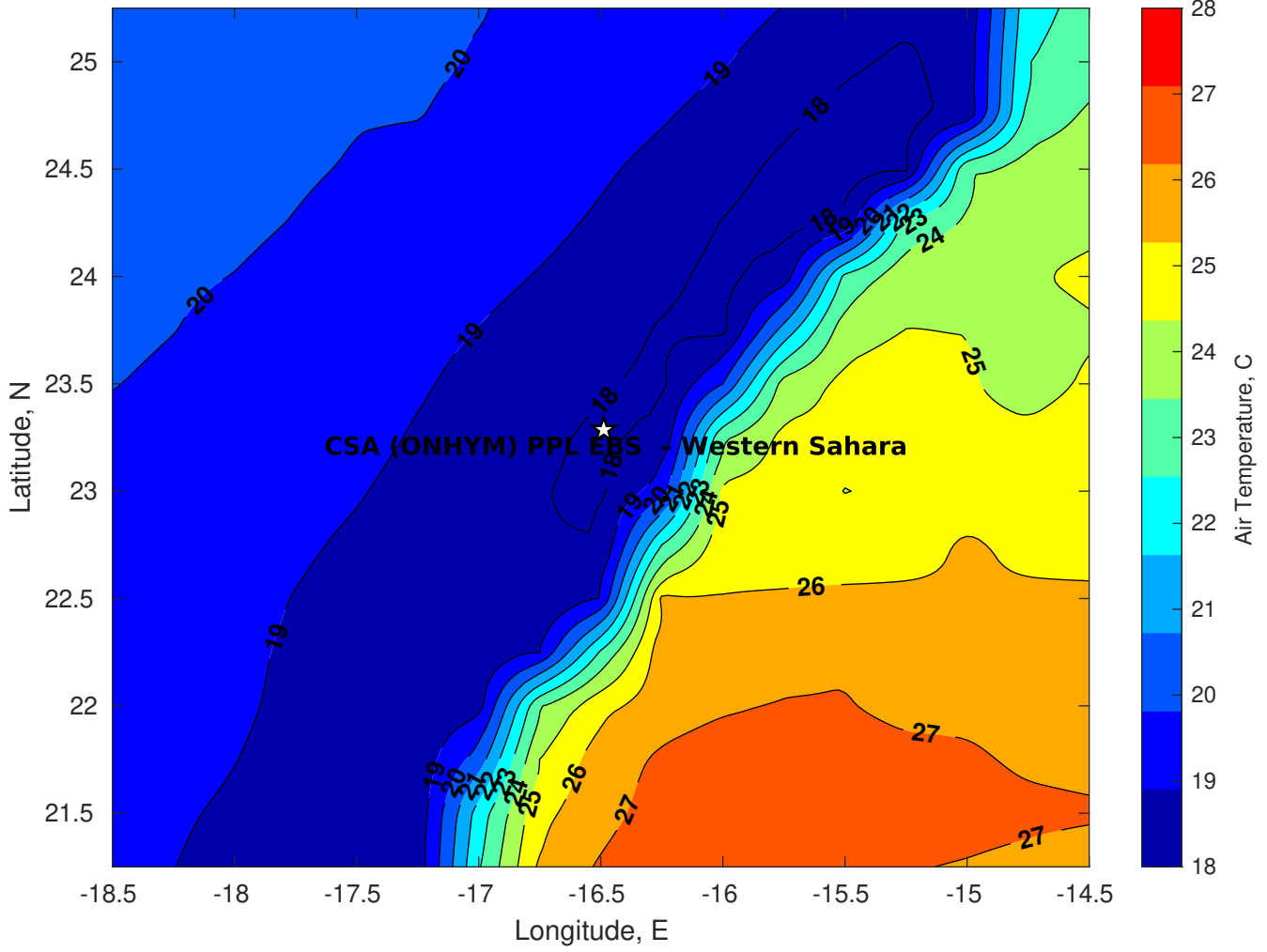
Surface Pressure (mb) for CSA (ONHYM) PPL EBS - Western Sahara at 12-Feb-2025 12:00:00



Air Temperature (C) for CSA (ONHYM) PPL EBS - Western Sahara at 10-Feb-2025



Air Temperature (C) for CSA (ONHYM) PPL EBS - Western Sahara at 10-Feb-2025



Air Temperature (C) for CSA (ONHYM) PPL EBS - Western Sahara at 10-Feb-2025

