

\*\*\*\*\*  
Marine Weather Forecast for Geohidra (Shell) Dragon  
Forecast valid as of 11-Feb-2025 0200 GMT  
\*\*\*\*\*

All times are local.

Tonight  
Winds: E, 15-20 kts.  
Waves: E, 6-7 feet, 8-9 sec.  
Currents: NW, 1-1.5 kts.

Tuesday  
Winds: E, 15-20 kts.  
Waves: E, 5-6 feet, 8-9 sec.  
Currents: NW, 1-1.5 kts.

Tuesday Night  
Winds: E, 15-20 kts.  
Waves: E, 5-6 feet, 8-9 sec.  
Currents: W, 1.5-2 kts.

Wednesday  
Winds: E, 20-25 kts.  
Waves: E, 6-7 feet, 8-9 sec.  
Currents: W, 1.5-2 kts.

Wednesday Night  
Winds: E, 15-20 kts.  
Waves: E, 5-6 feet, 8-9 sec.  
Currents: W, 1.5-2 kts.

Thursday  
Winds: E, 20-25 kts.  
Waves: NE, 6-7 feet, 9-10 sec.  
Currents: W, 1-1.5 kts.

Thursday Night  
Winds: E, 15-20 kts.  
Waves: NE, 5-6 feet, 9-10 sec.  
Currents: W, 1-1.5 kts.

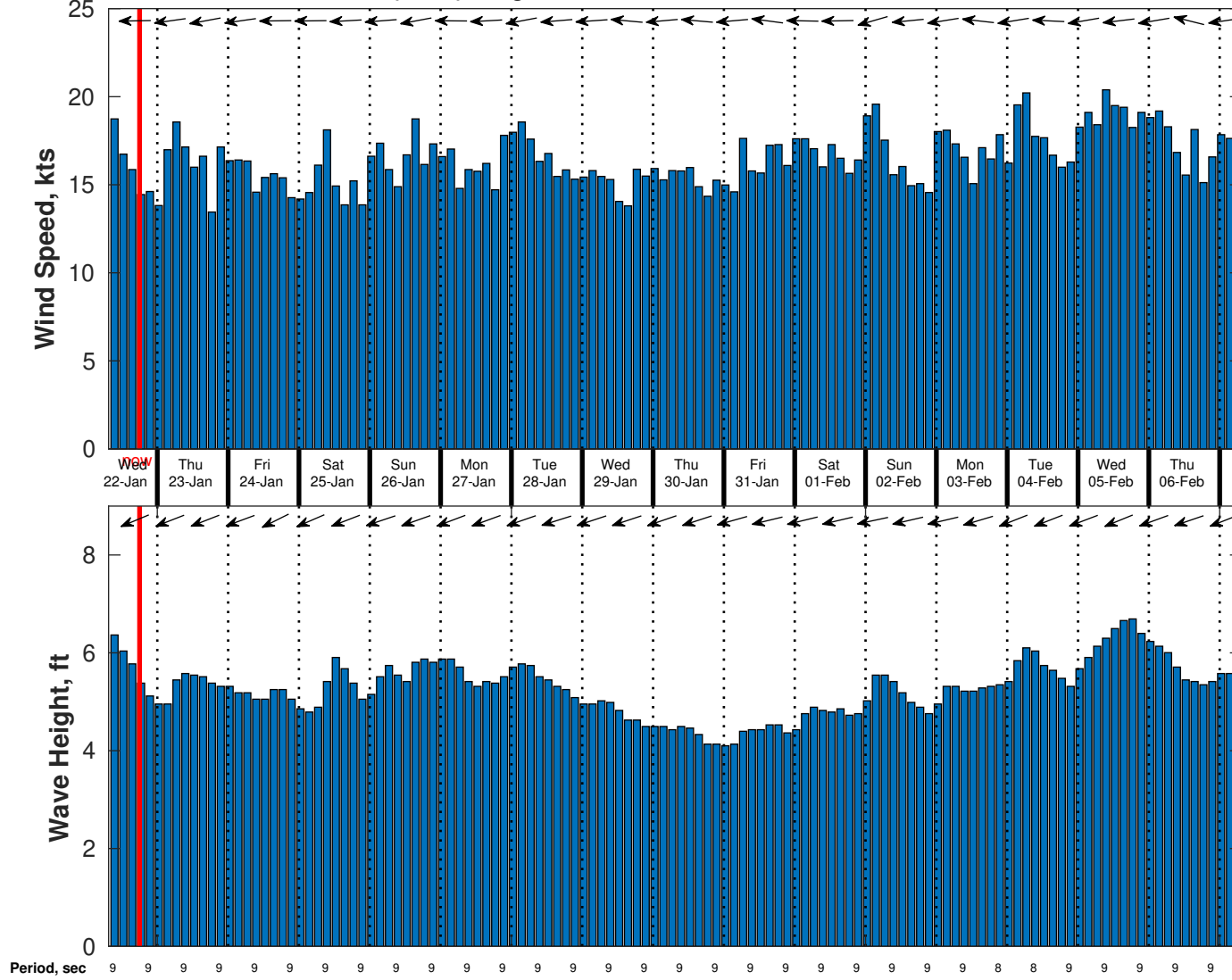
Friday  
Winds: E, 15-20 kts.  
Waves: E, 5-6 feet, 9-10 sec.  
Currents: W, 1-1.5 kts.

Friday Night  
Winds: E, 15-20 kts.  
Waves: E, 6-7 feet, 9-10 sec.  
Currents: W, 1-1.5 kts.

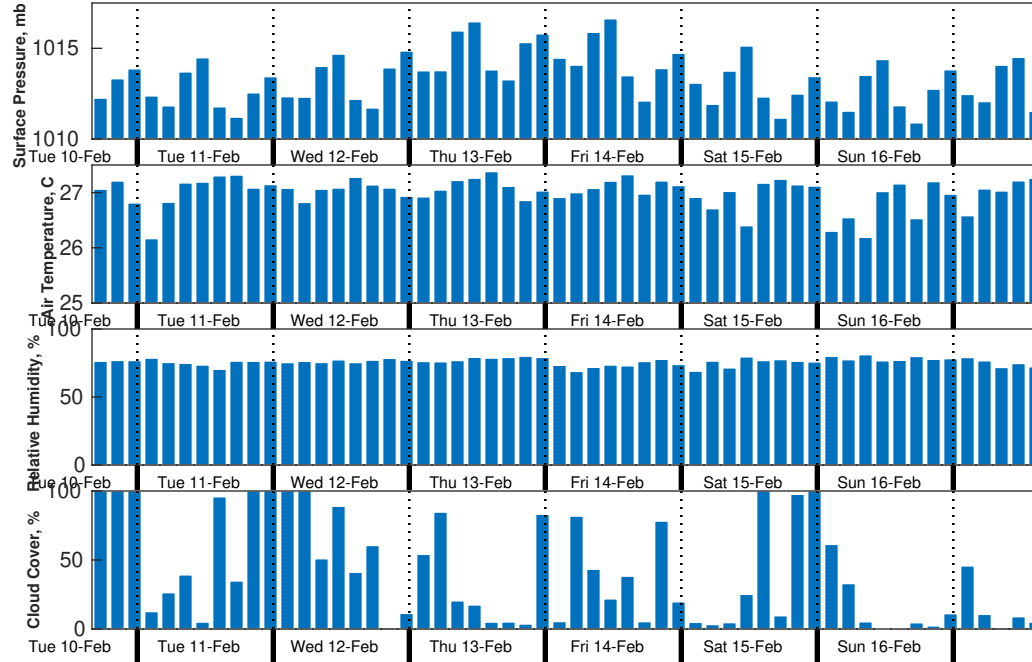
Saturday  
Winds: E, 15-20 kts.  
Waves: E, 5-6 feet, 9-10 sec.  
Currents: W, 1-1.5 kts.

Saturday Night  
Winds: E, 15-20 kts.  
Waves: NE, 6-7 feet, 9-10 sec.  
Currents: W, 0.5-1 kts.

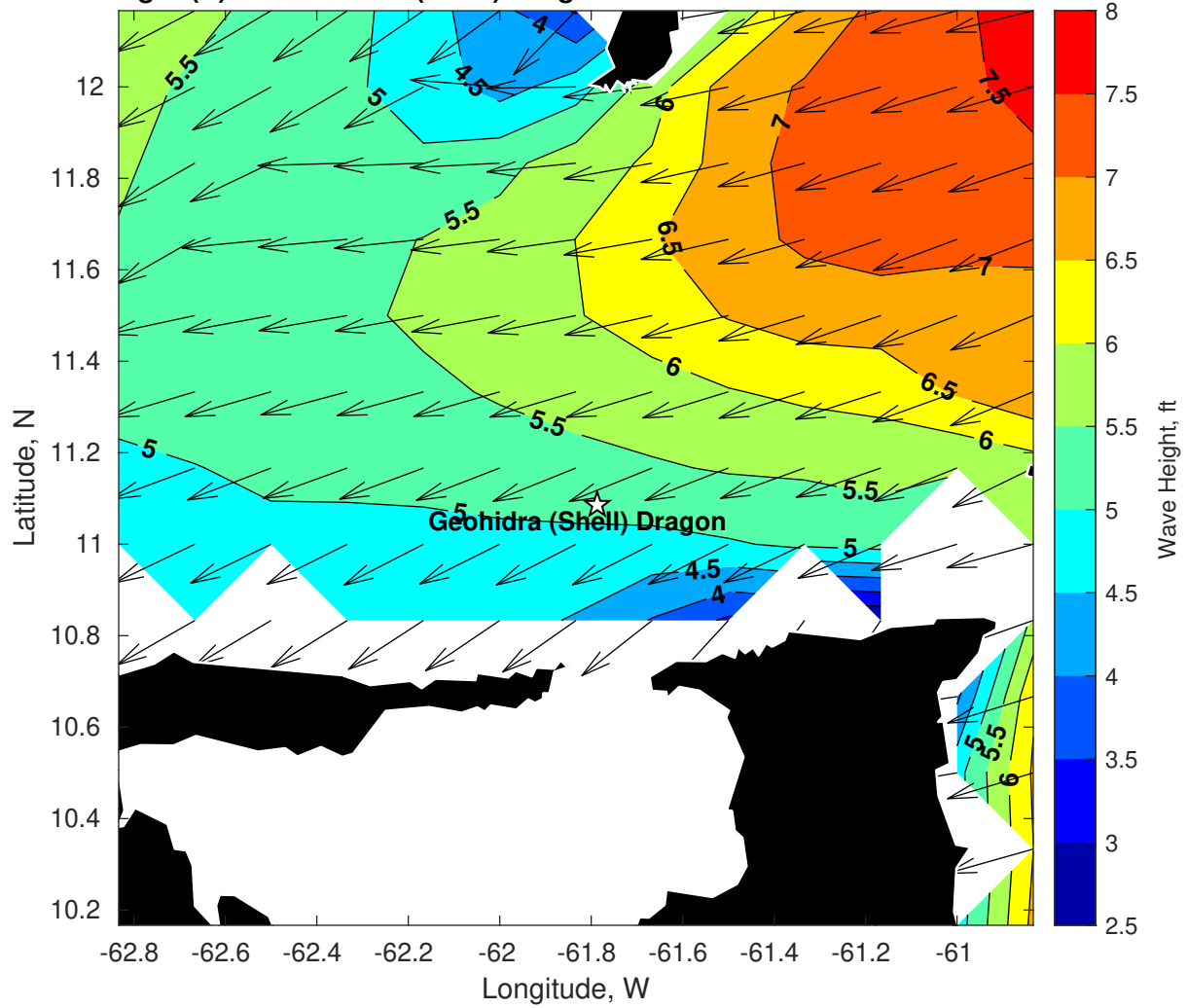
Wind & Wave Forecast for Geohdra (Shell) Dragon from 22-Jan-2025 08:00:00 to 07-Feb-2025 08:00:00



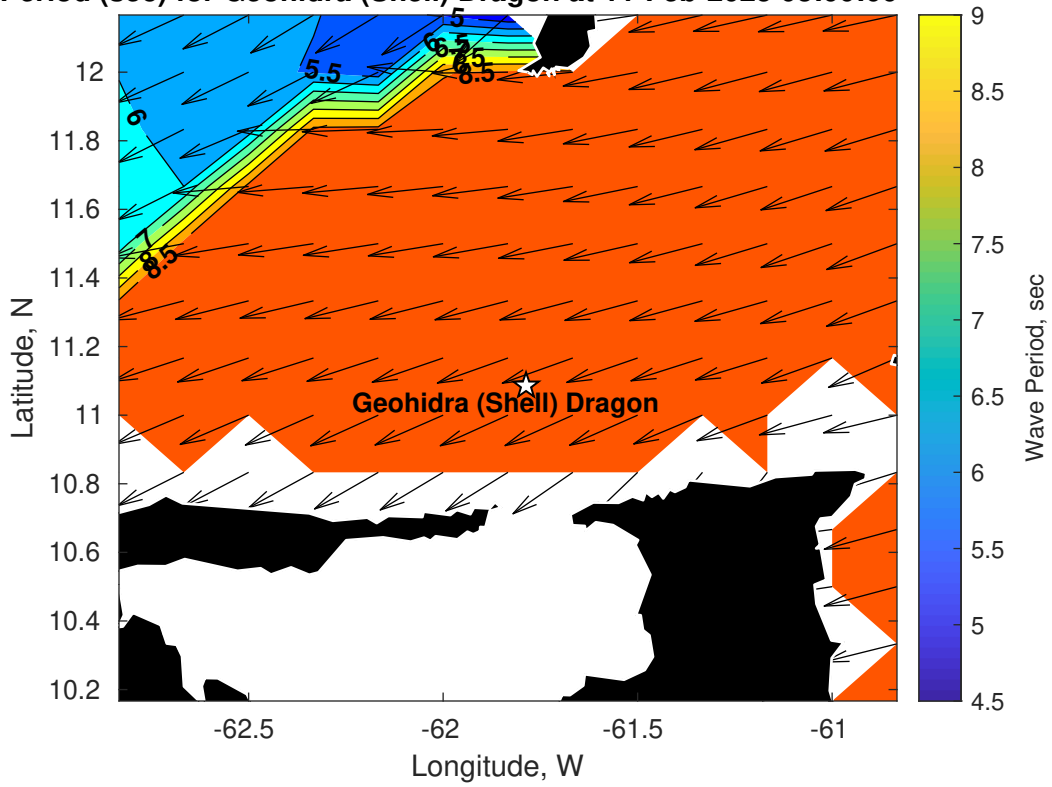
**Met Forecast for Geohidra (Shell) Dragon from 10-Feb-2025 18:00:00 to 17-Feb-2025 18:00:00**



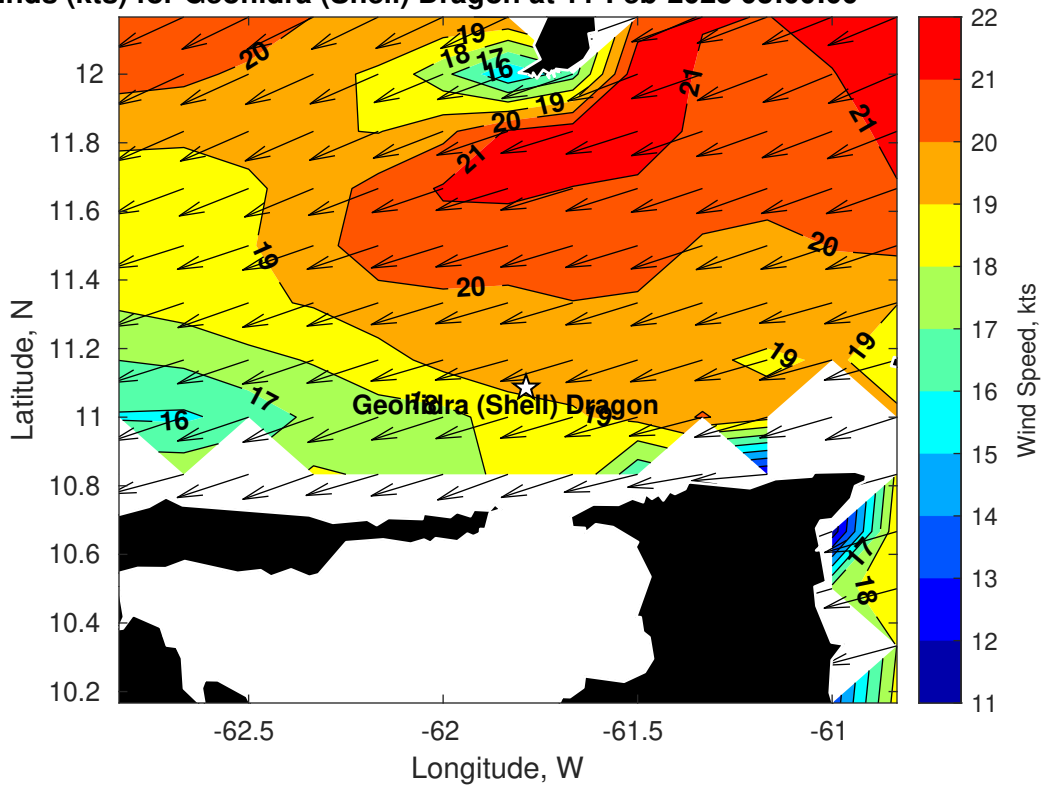
Wave Height (ft) for Geohidra (Shell) Dragon at 11-Feb-2025 03:00:00



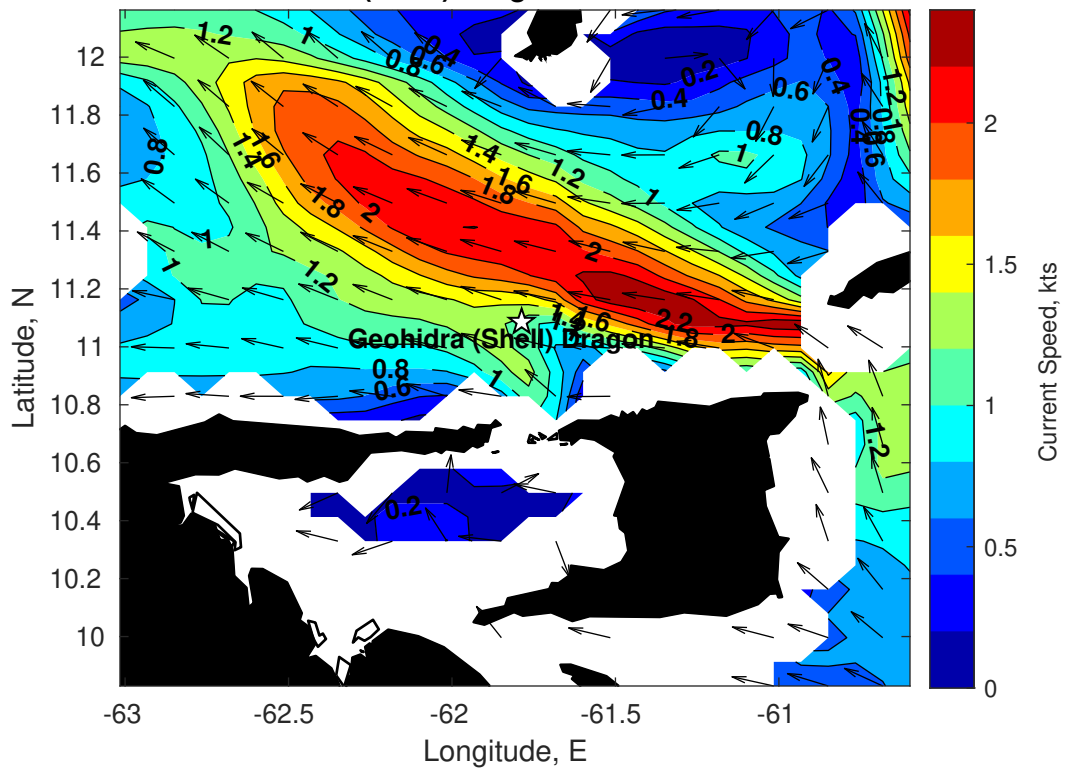
Wave Period (sec) for Geohidra (Shell) Dragon at 11-Feb-2025 03:00:00



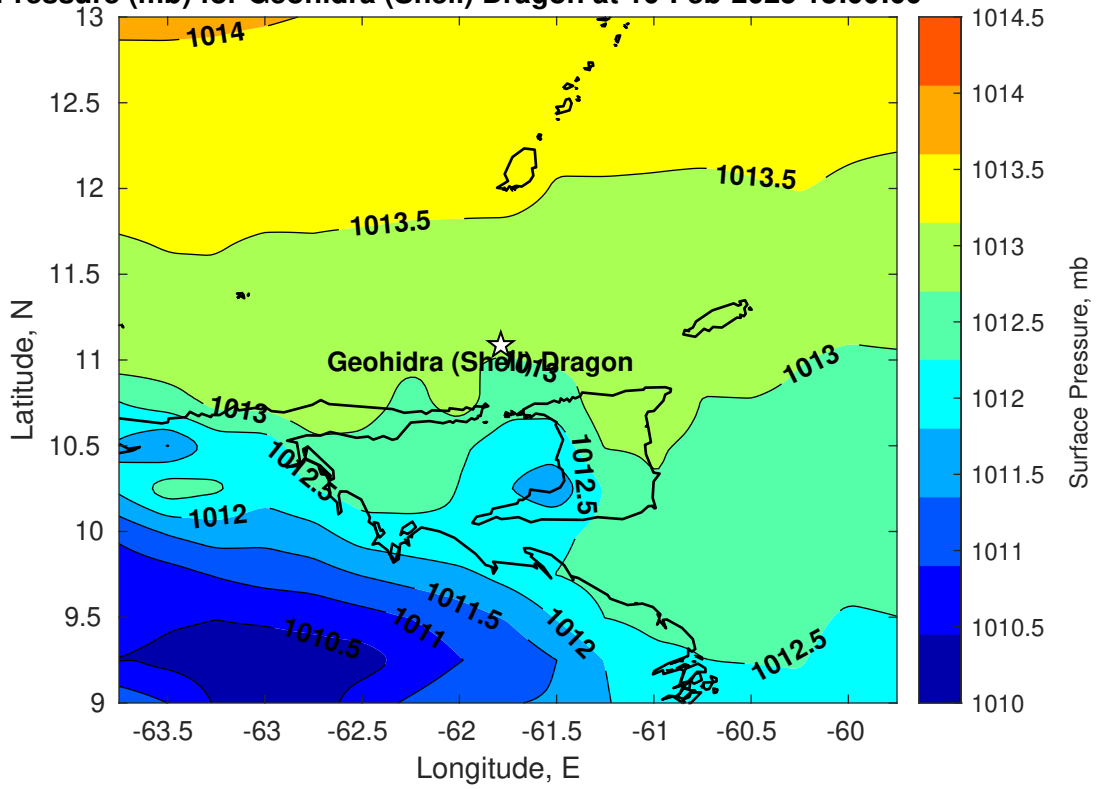
**Winds (kts) for Geohidra (Shell) Dragon at 11-Feb-2025 03:00:00**



Surface Currents for Geohidra (Shell) Dragon at 10-Feb-2025 00:00:00

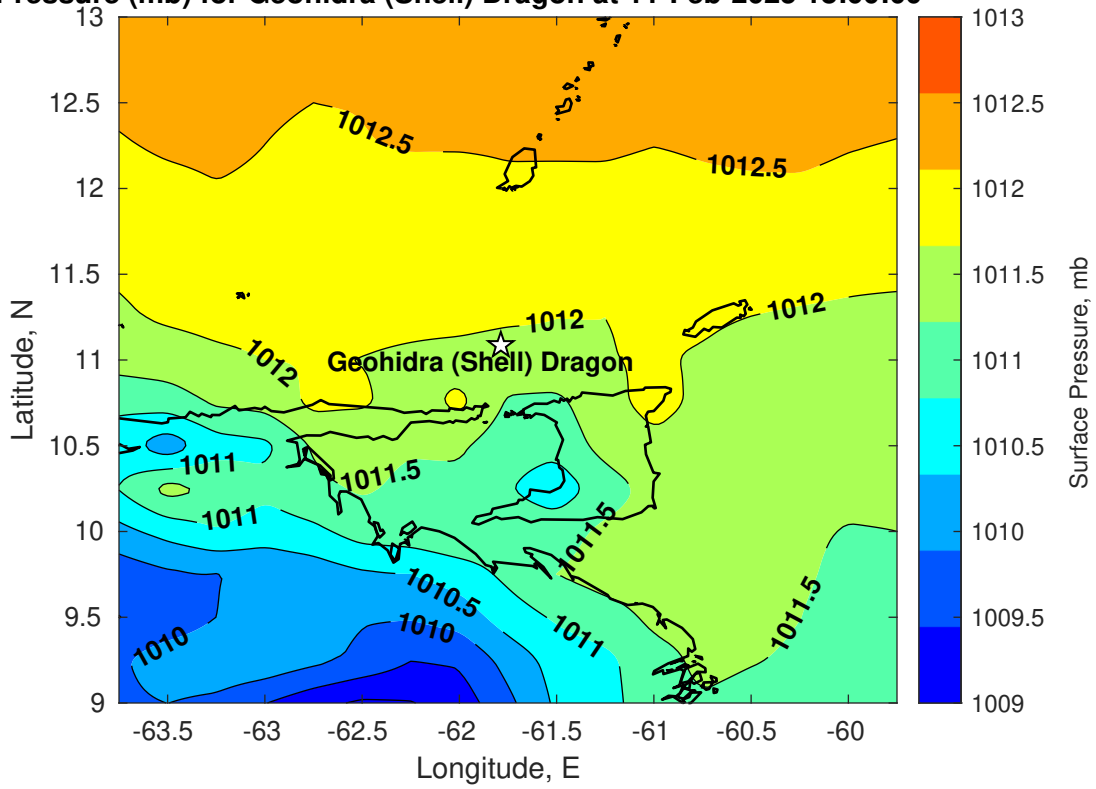


Surface Pressure (mb) for Geohidra (Shell) Dragon at 10-Feb-2025 18:00:00

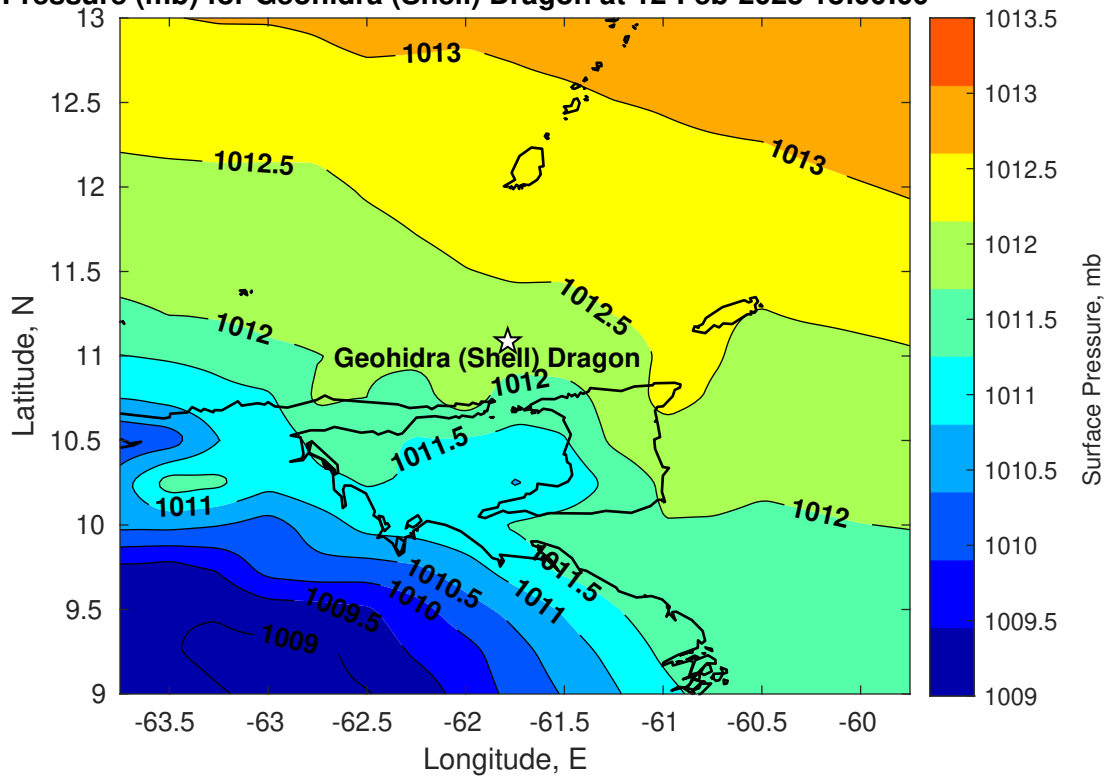




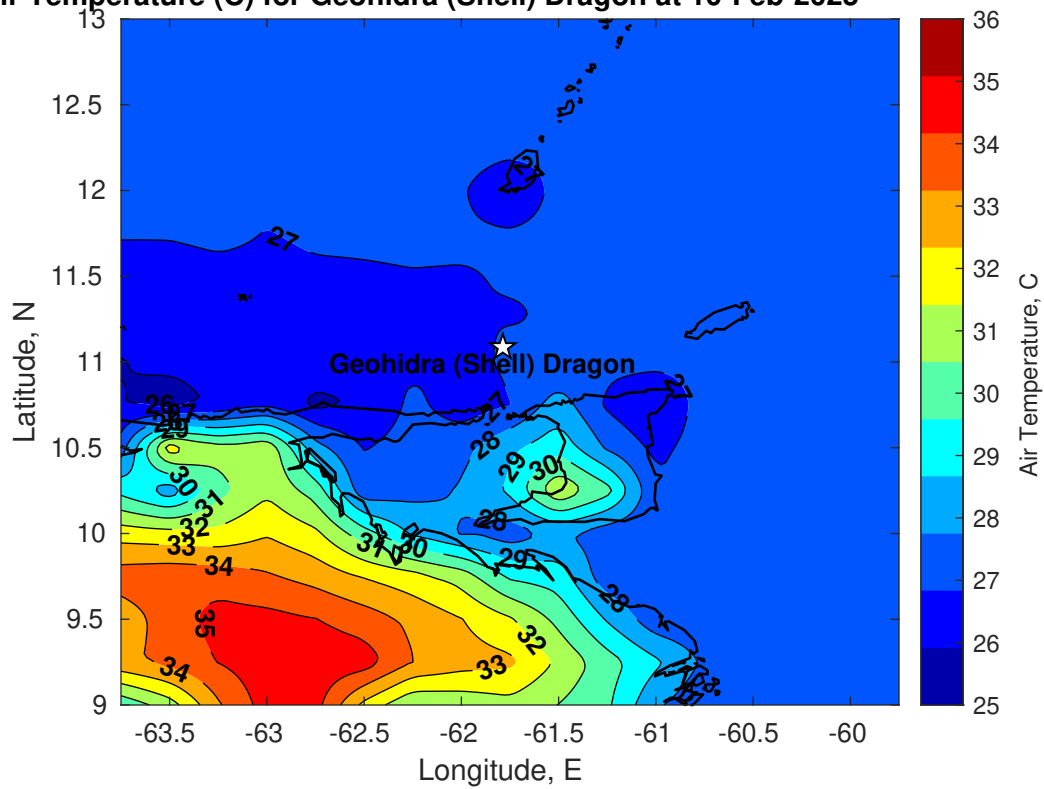
Surface Pressure (mb) for Geohidra (Shell) Dragon at 11-Feb-2025 18:00:00



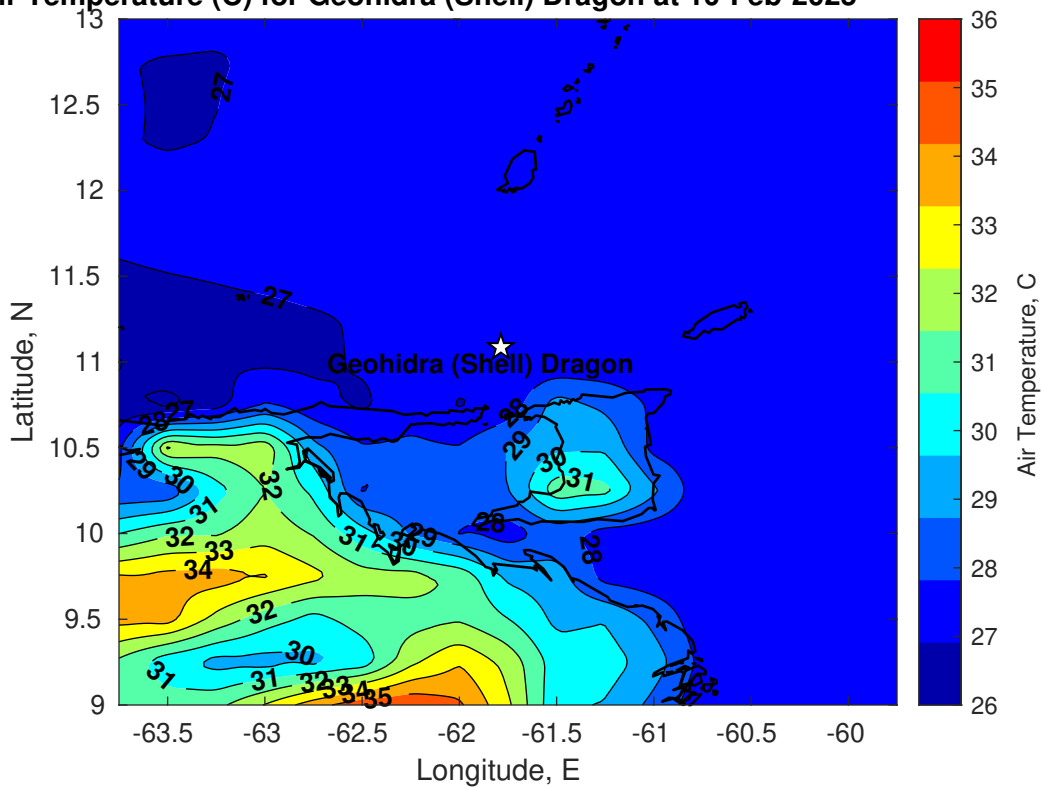
Surface Pressure (mb) for Geohidra (Shell) Dragon at 12-Feb-2025 18:00:00



Air Temperature (C) for Geohidra (Shell) Dragon at 10-Feb-2025



Air Temperature (C) for Geohidra (Shell) Dragon at 10-Feb-2025



Air Temperature (C) for Geohidra (Shell) Dragon at 10-Feb-2025

