
Marine Weather Forecast for Gyre
Forecast valid as of 10-Feb-2025 2100 GMT

All times are local.

Tonight

Winds: N, 5-10 kts.
Waves: NW, 3-4 feet, 10-11 sec.
Currents: W, less than 0.5 knot.

Tuesday

Winds: N, 10-15 kts.
Waves: NW, 3-4 feet, 9-10 sec.
Currents: W, less than 0.5 knot.

Tuesday Night

Winds: N, 5-10 kts.
Waves: NW, 3-4 feet, 10-11 sec.
Currents: W, less than 0.5 knot.

Wednesday

Winds: NE, 10-15 kts.
Waves: N, 3-4 feet, 9-10 sec.
Currents: W, less than 0.5 knot.

Wednesday Night

Winds: NE, 5-10 kts.
Waves: NW, 3-4 feet, 9-10 sec.
Currents: W, less than 0.5 knot.

Thursday

Winds: NE, 10-15 kts.
Waves: NW, 4-5 feet, 15-16 sec.
Currents: W, less than 0.5 knot.

Thursday Night

Winds: NE, 10-15 kts.
Waves: N, 4-5 feet, 17-18 sec.
Currents: W, less than 0.5 knot.

Friday

Winds: NE, 5-10 kts.
Waves: NW, 4-5 feet, 16-17 sec.
Currents: W, less than 0.5 knot.

Friday Night

Winds: E, 5-10 kts.
Waves: NW, 4-5 feet, 13-14 sec.
Currents: W, less than 0.5 knot.

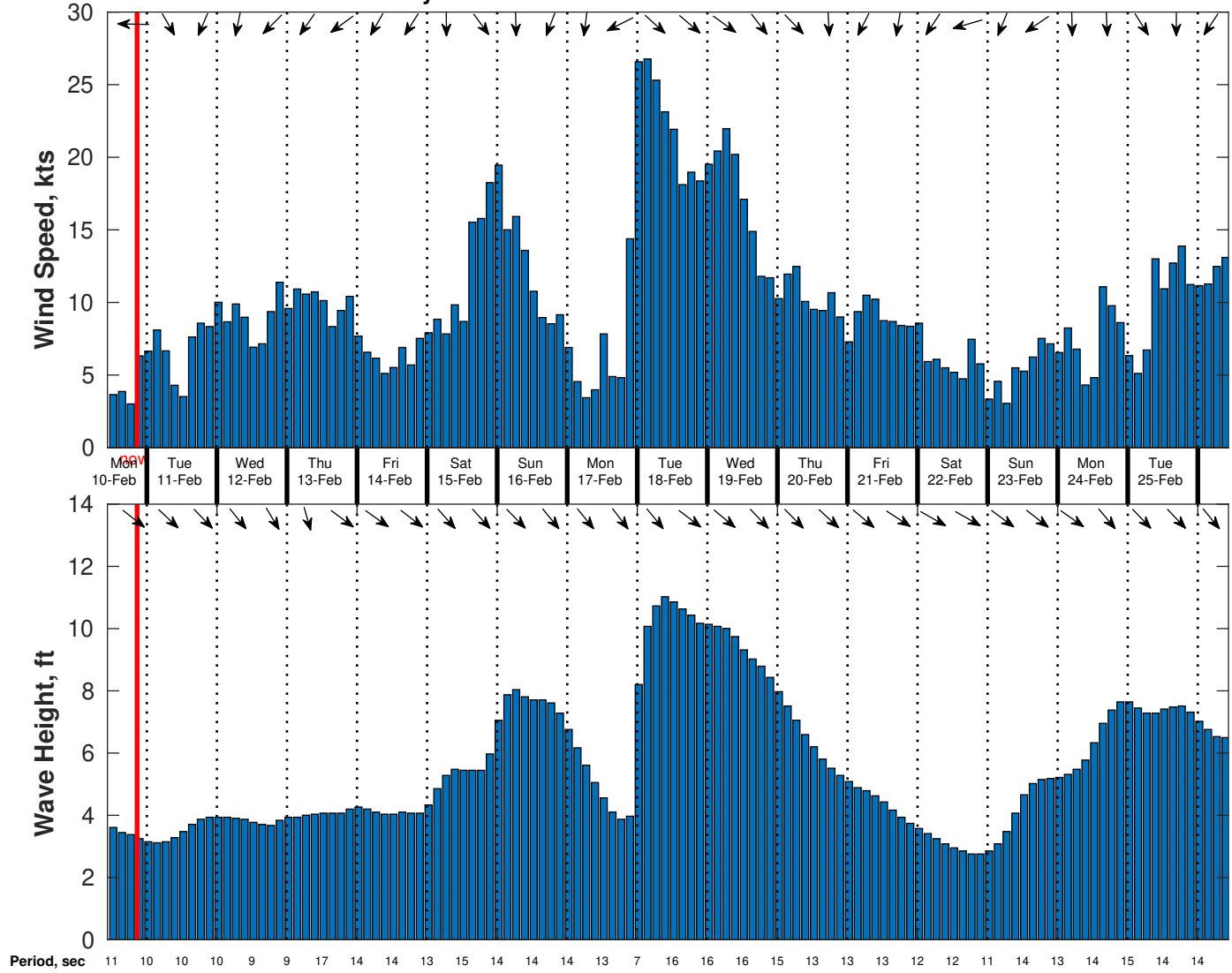
Saturday

Winds: N, 15-20 kts.
Waves: NW, 7-8 feet, 14-15 sec.
Currents: W, less than 0.5 knot.

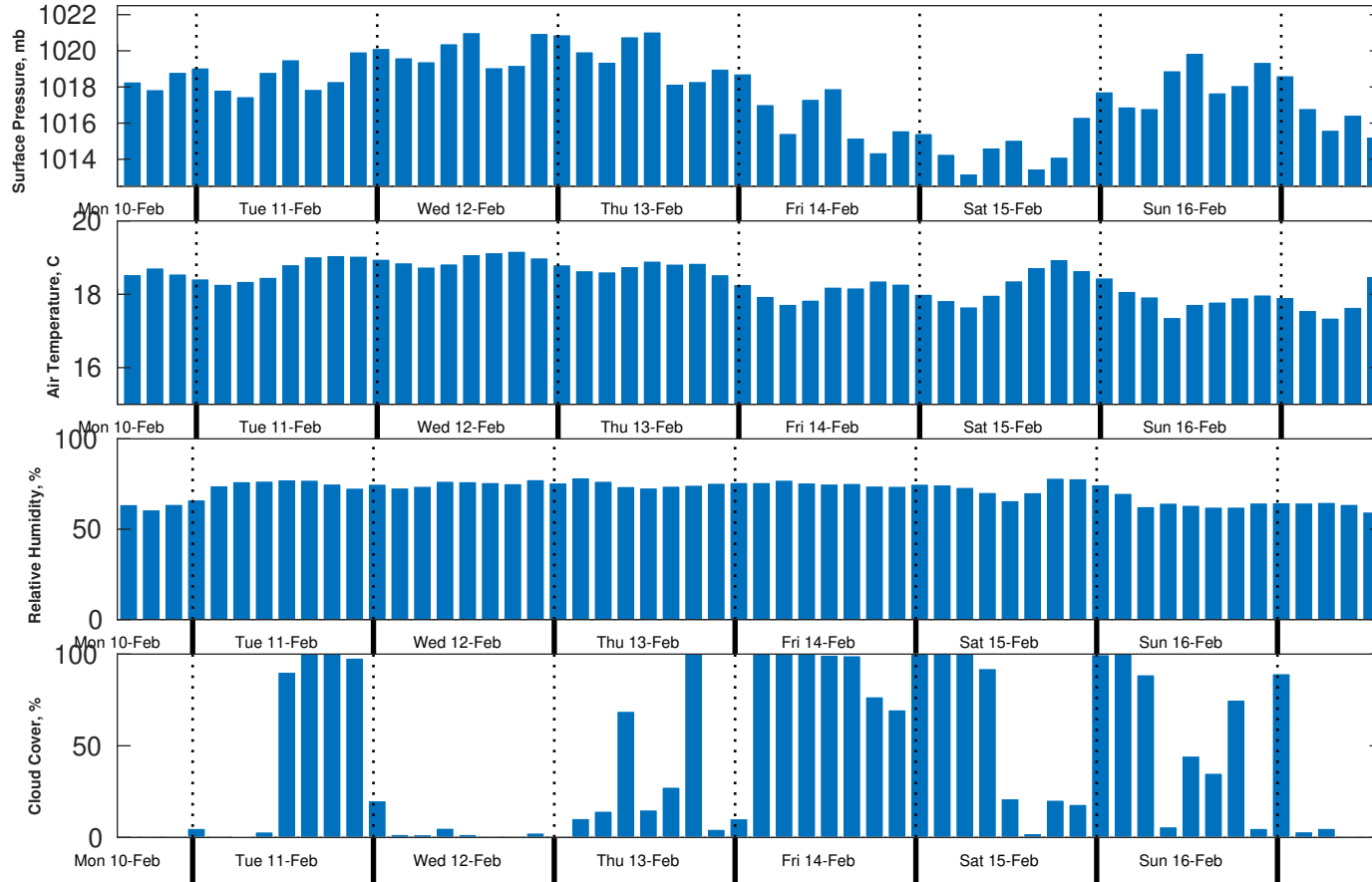
Saturday Night

Winds: N, 15-20 kts.
Waves: NW, 5-6 feet, 15-16 sec.

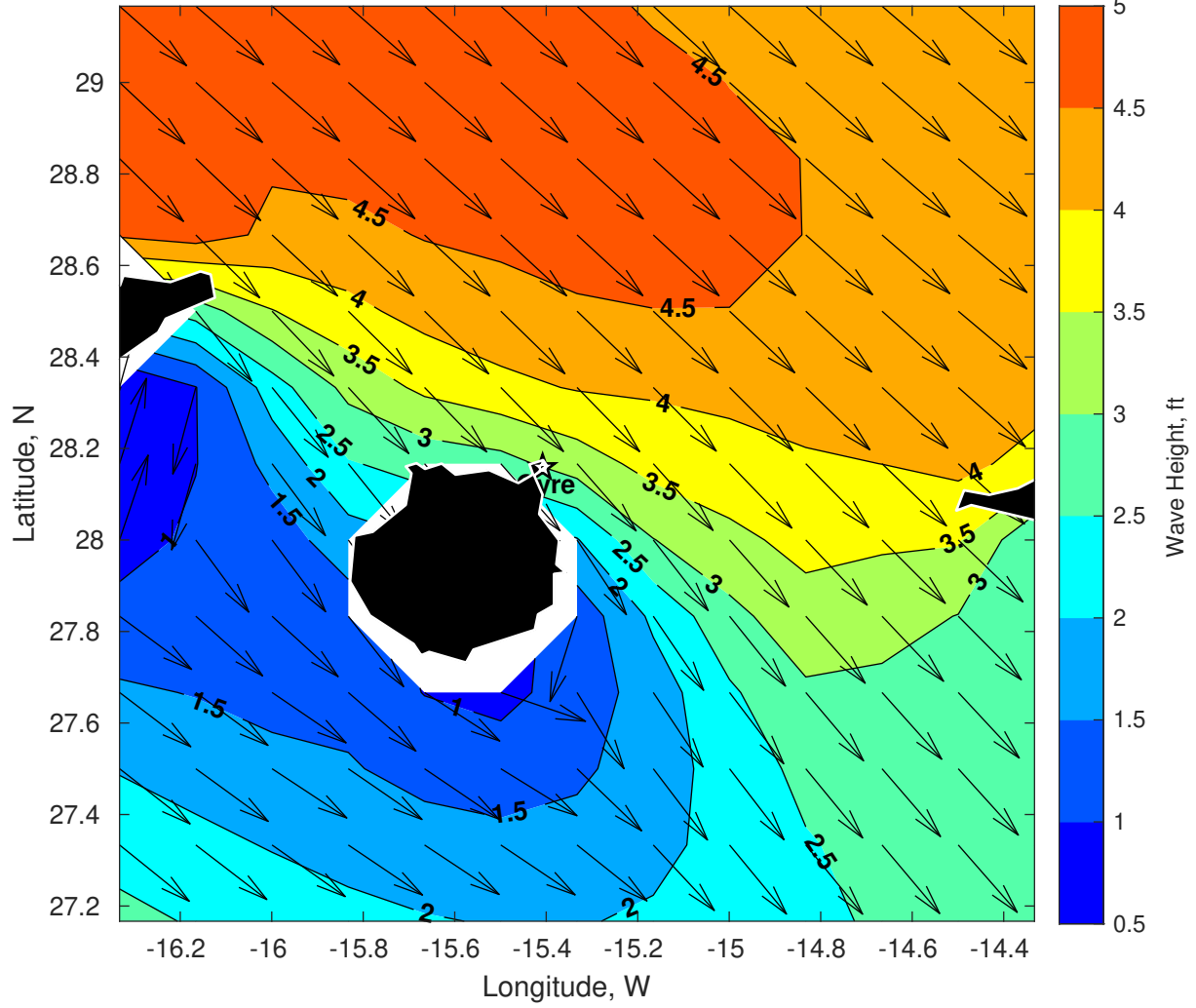
Wind & Wave Forecast for Gyre from 10-Feb-2025 11:00:00 to 26-Feb-2025 11:00:00



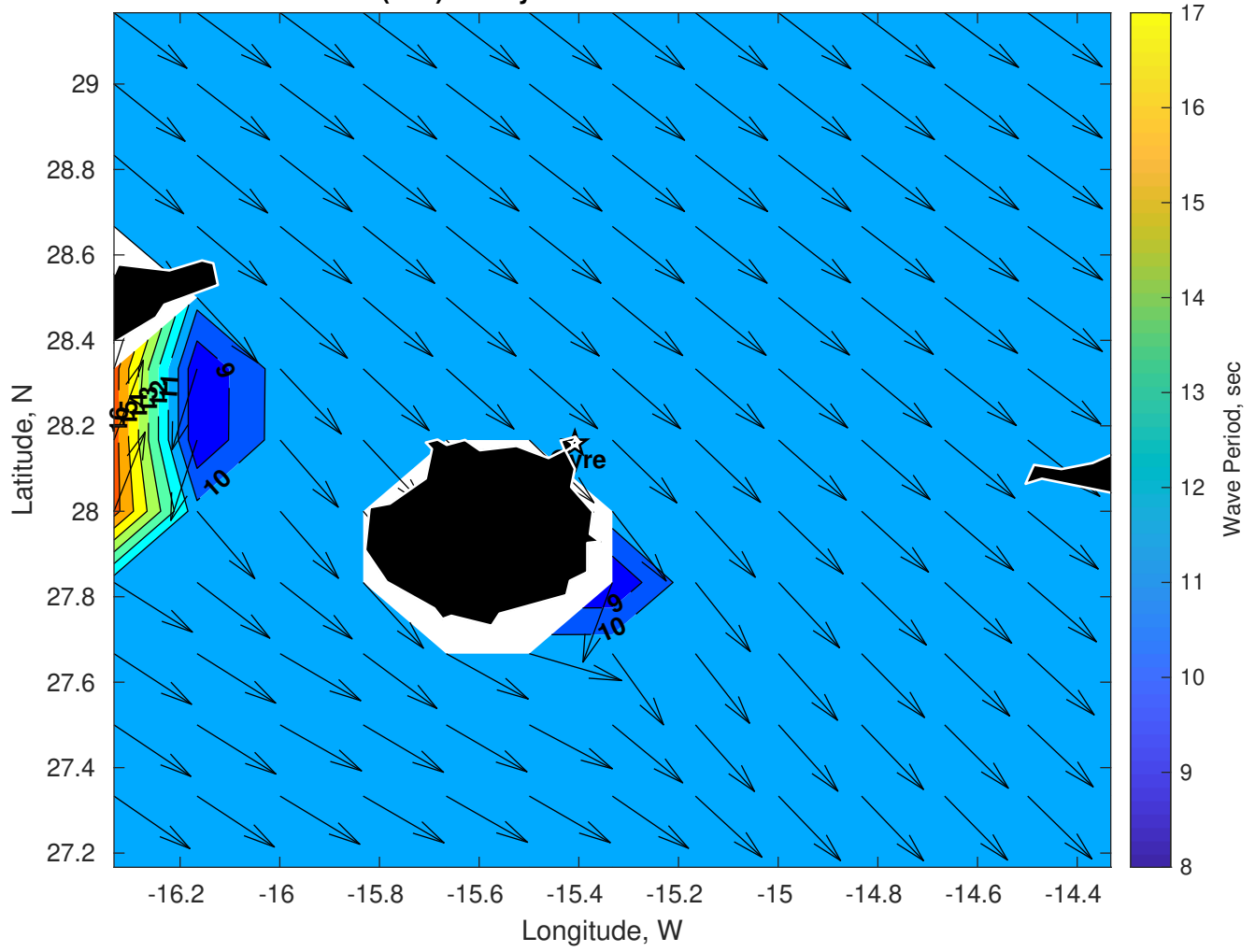
Met Forecast for Gyre from 10-Feb-2025 11:00:00 to 17-Feb-2025 11:00:00



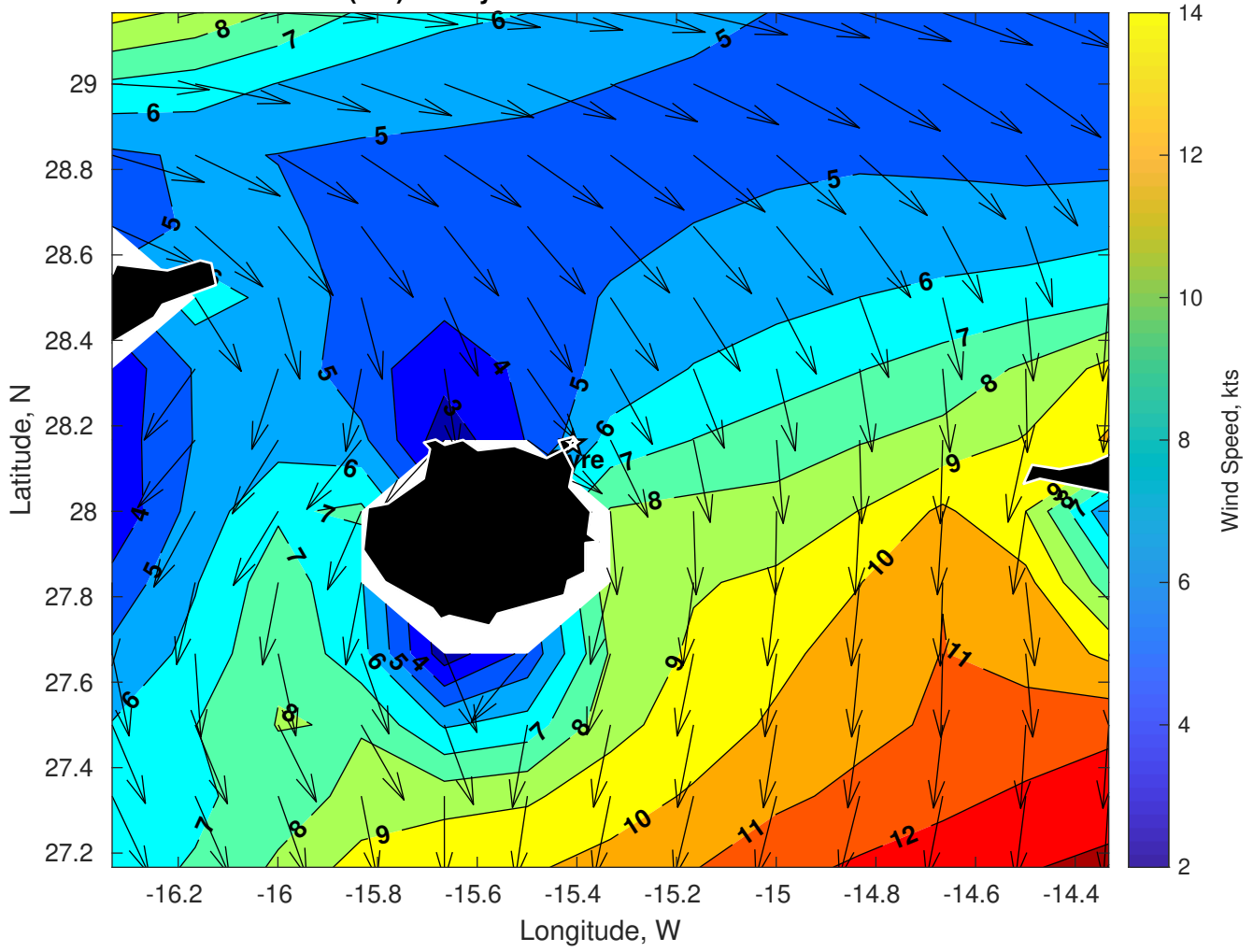
Wave Height (ft) for Gyre at 10-Feb-2025 21:00:00



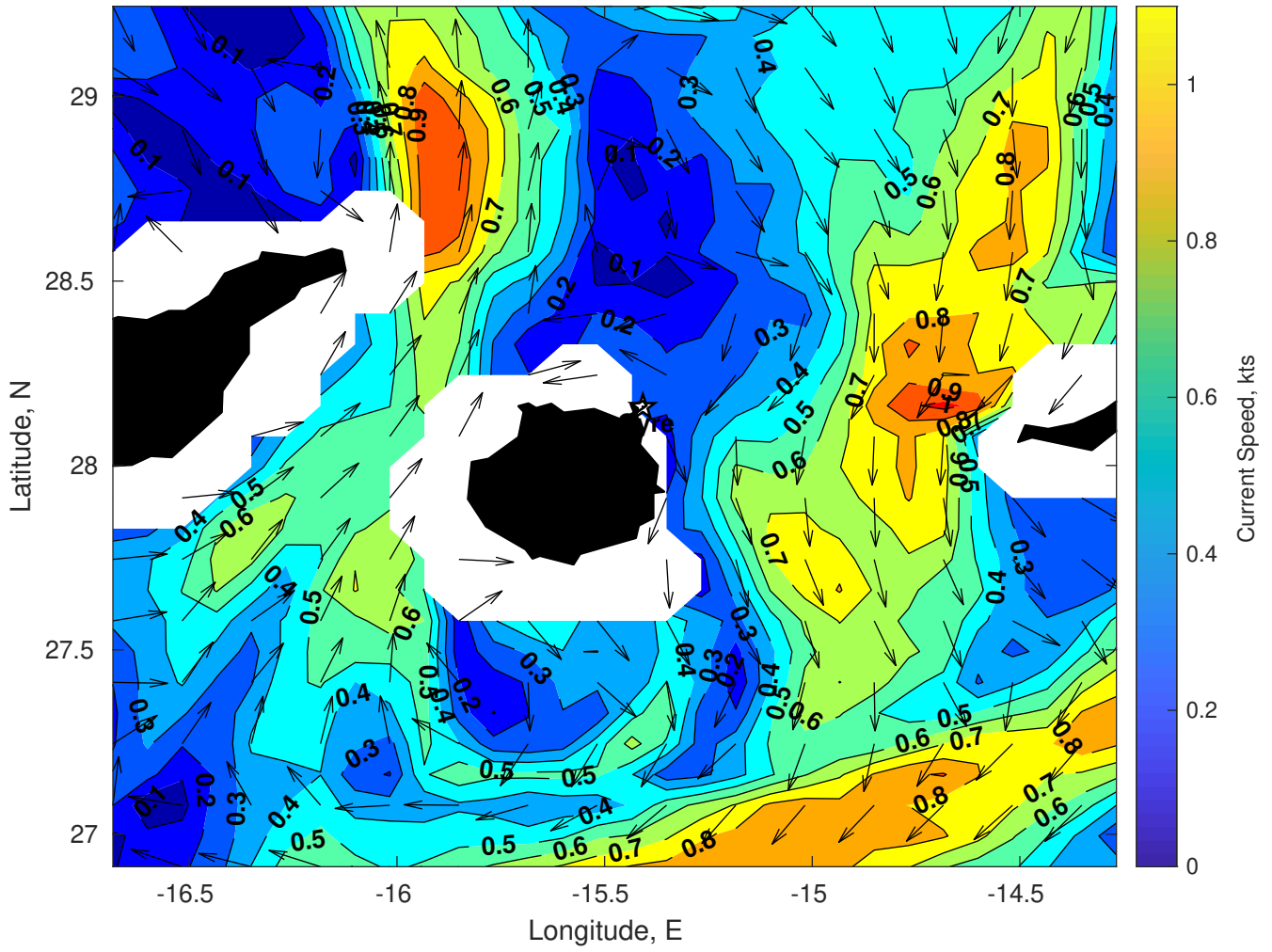
Wave Period (sec) for Gyre at 10-Feb-2025 21:00:00



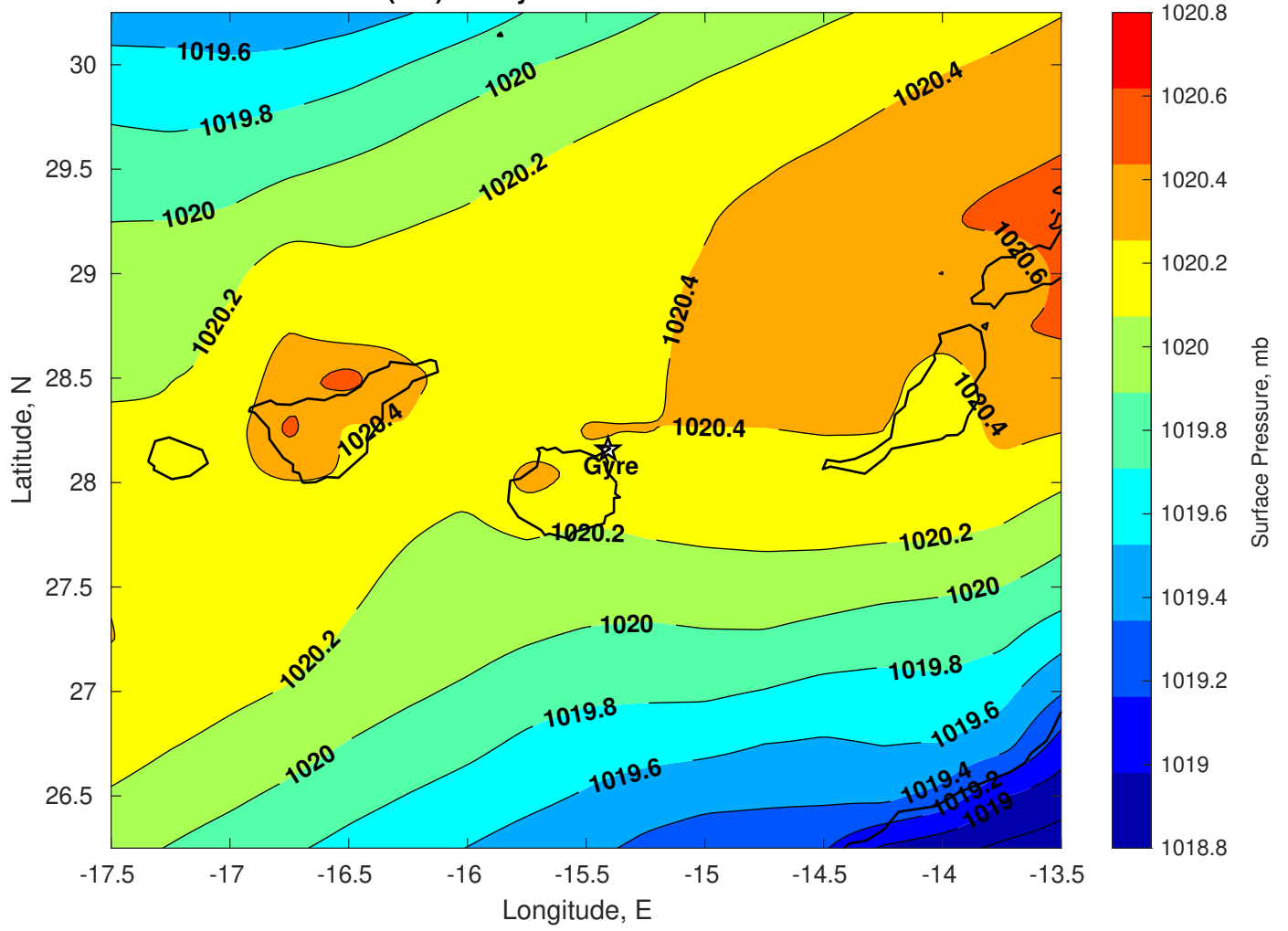
Winds (kts) for Gyre at 10-Feb-2025 21:00:00



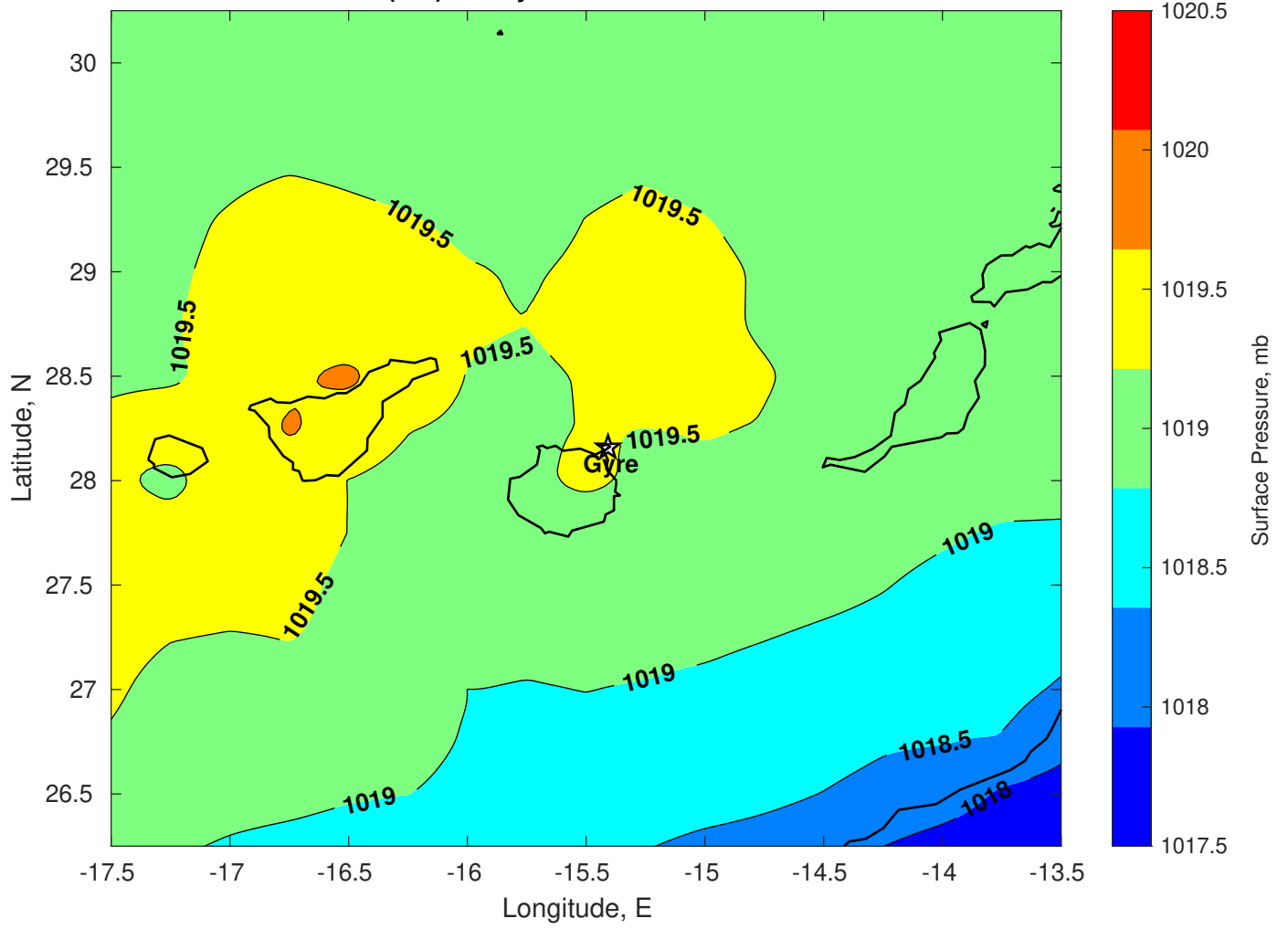
Surface Currents for Gyre at 10-Feb-2025 00:00:00



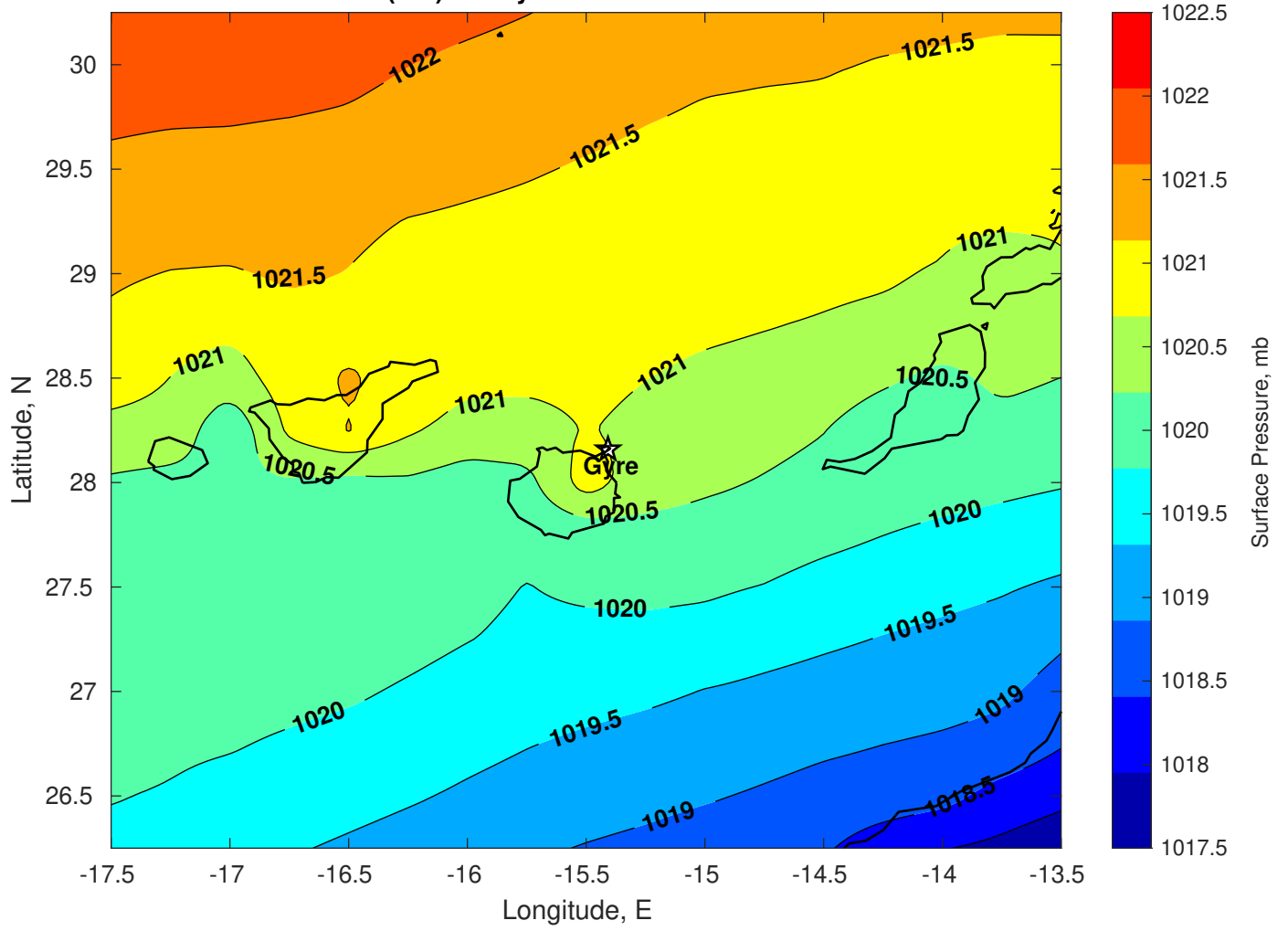
Surface Pressure (mb) for Gyre at 10-Feb-2025 12:00:00



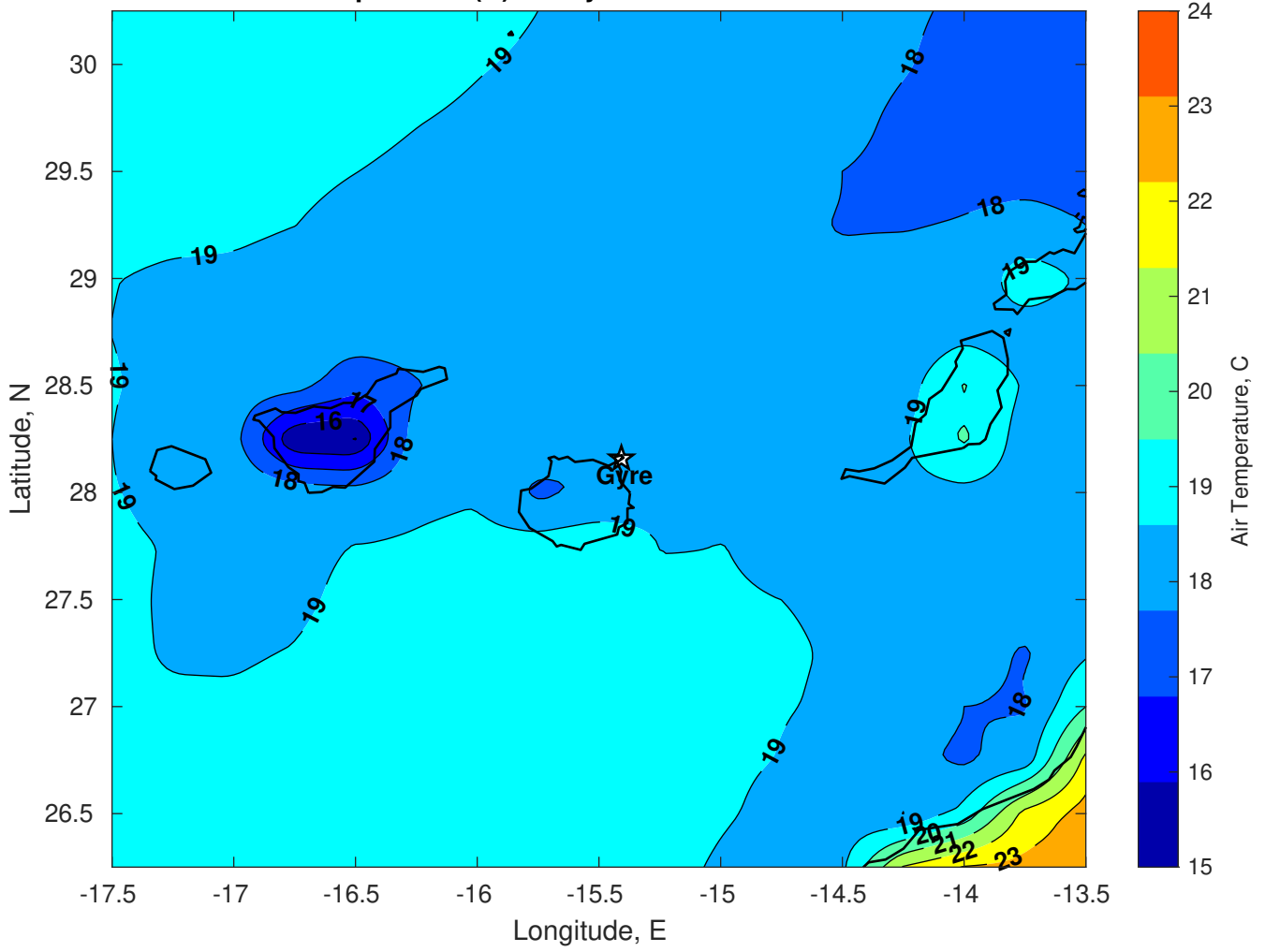
Surface Pressure (mb) for Gyre at 11-Feb-2025 12:00:00



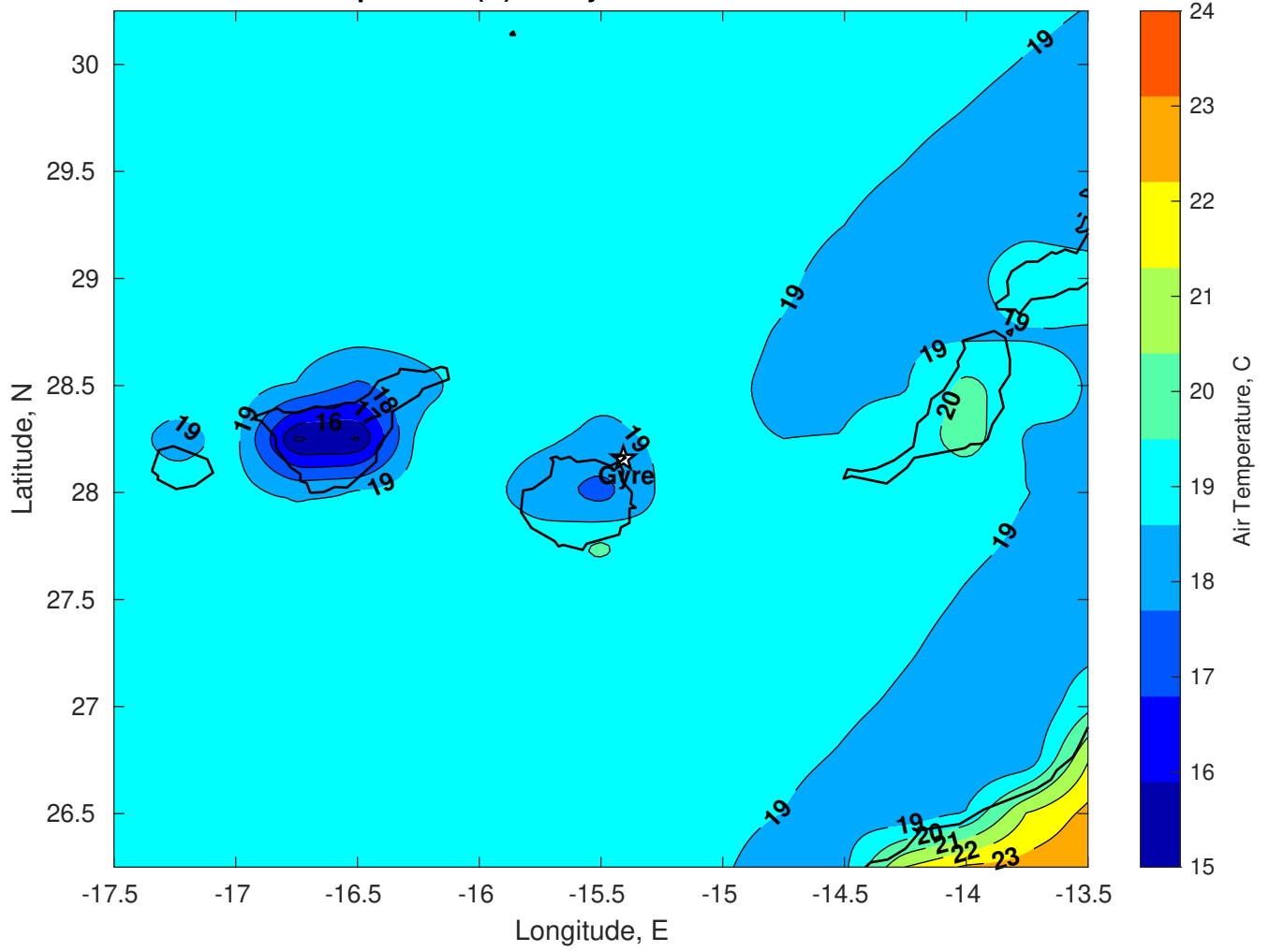
Surface Pressure (mb) for Gyre at 12-Feb-25 12:00:00



Air Temperature (C) for Gyre at 10-Feb-2025



Air Temperature (C) for Gyre at 10-Feb-2025



Air Temperature (C) for Gyre at 10-Feb-2025

