

\*\*\*\*\*

Marine Weather Forecast for CSA (ONHYM) PPL EBS - Cote d'Ivoire  
Forecast valid as of 12-Feb-2025 0900 GMT

\*\*\*\*\*

All times are local.

Today

Winds: NW, 10-15 kts.  
Waves: N, 3-4 feet, 15-16 sec.  
No currents available.

Tonight

Winds: NW, 10-15 kts.  
Waves: N, 3-4 feet, 14-15 sec.  
No currents available.

Thursday

Winds: NW, 10-15 kts.  
Waves: N, 3-4 feet, 13-14 sec.  
No currents available.

Thursday Night

Winds: NW, 10-15 kts.  
Waves: N, 3-4 feet, 12-13 sec.  
No currents available.

Friday

Winds: N, 10-15 kts.  
Waves: N, 3-4 feet, 11-12 sec.  
No currents available.

Friday Night

Winds: NW, 10-15 kts.  
Waves: N, 3-4 feet, 16-17 sec.  
No currents available.

Saturday

Winds: NW, 10-15 kts.  
Waves: N, 3-4 feet, 16-17 sec.  
No currents available.

Saturday Night

Winds: NW, 10-15 kts.  
Waves: N, 3-4 feet, 14-15 sec.  
No currents available.

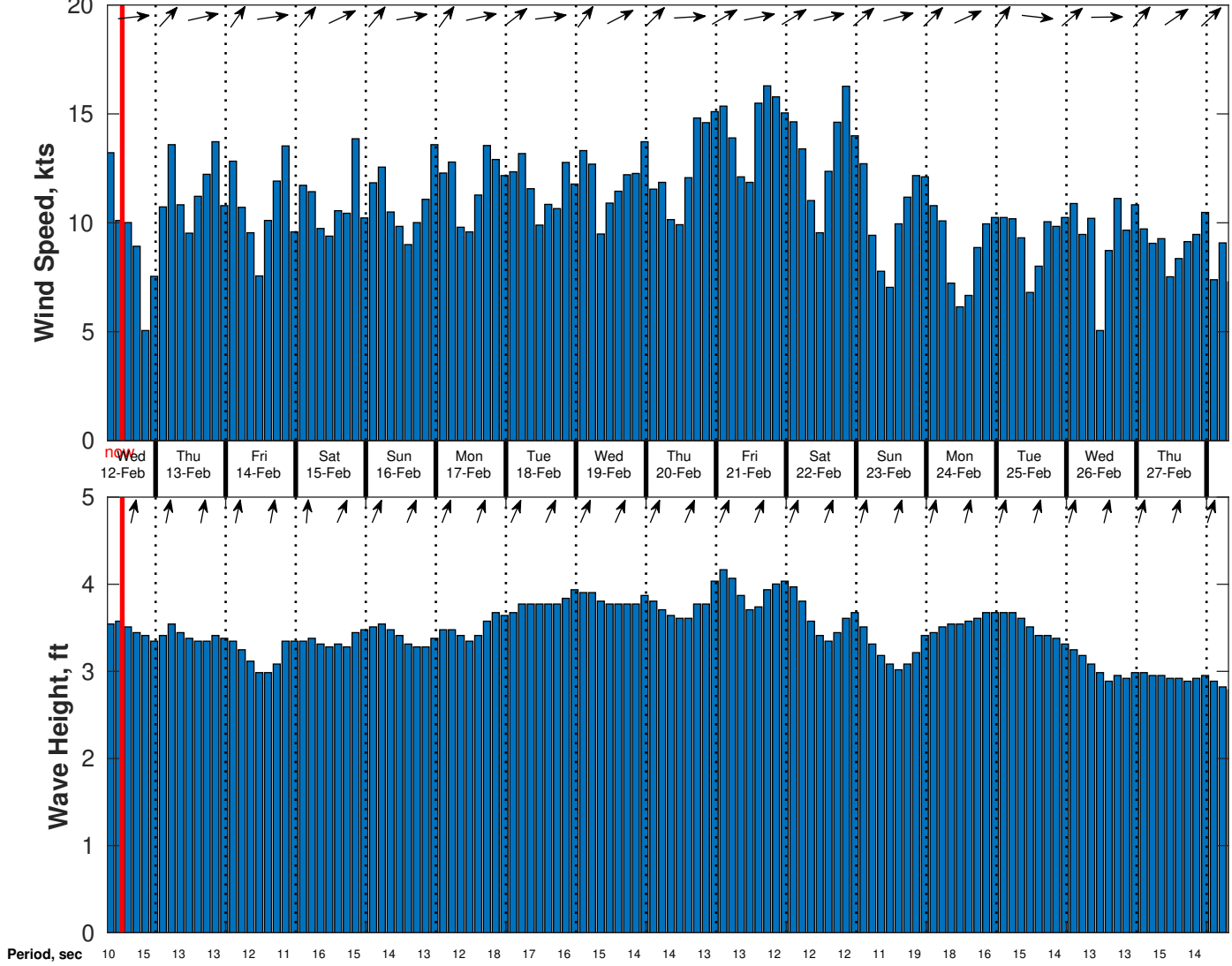
Sunday

Winds: NW, 10-15 kts.  
Waves: N, 3-4 feet, 13-14 sec.  
No currents available.

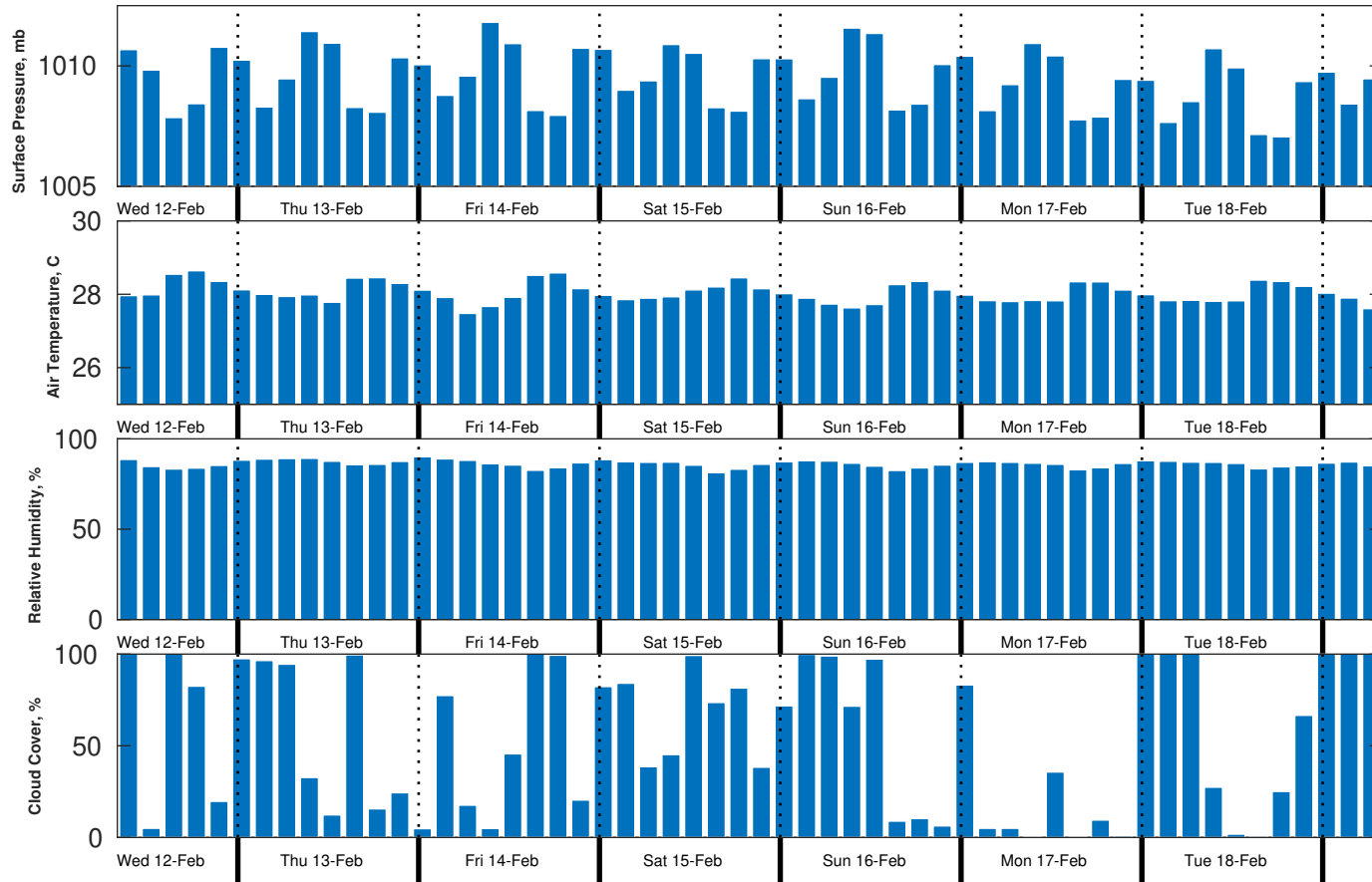
Sunday Night

Winds: NW, 10-15 kts.  
Waves: N, 3-4 feet, 12-13 sec.  
No currents available.

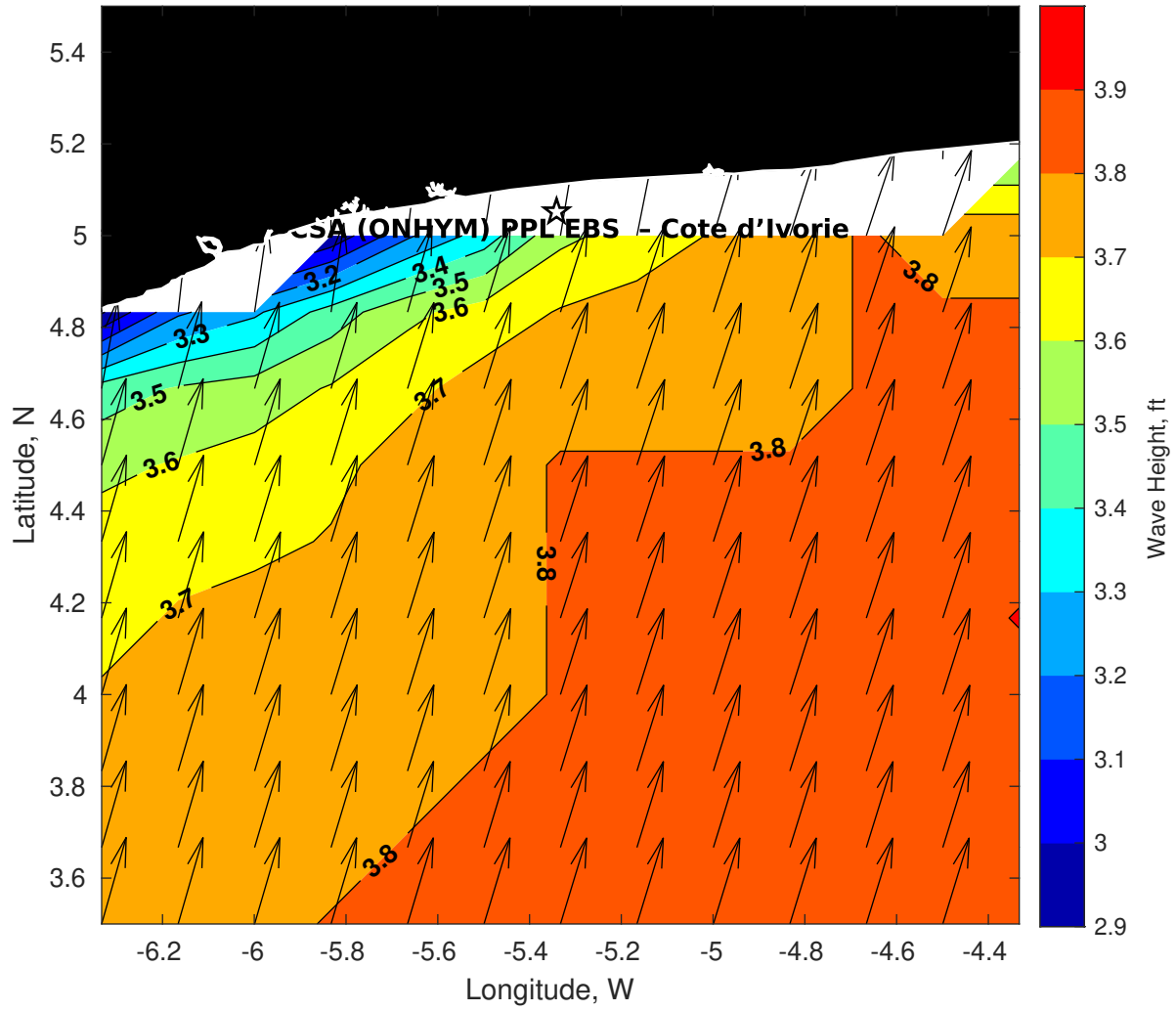
**Wind & Wave Forecast for CSA (ONHYM) PPL EBS - Cote d'Ivoire from 12-Feb-2025 07:00:00 to 28-Feb-2025 07:00:00**



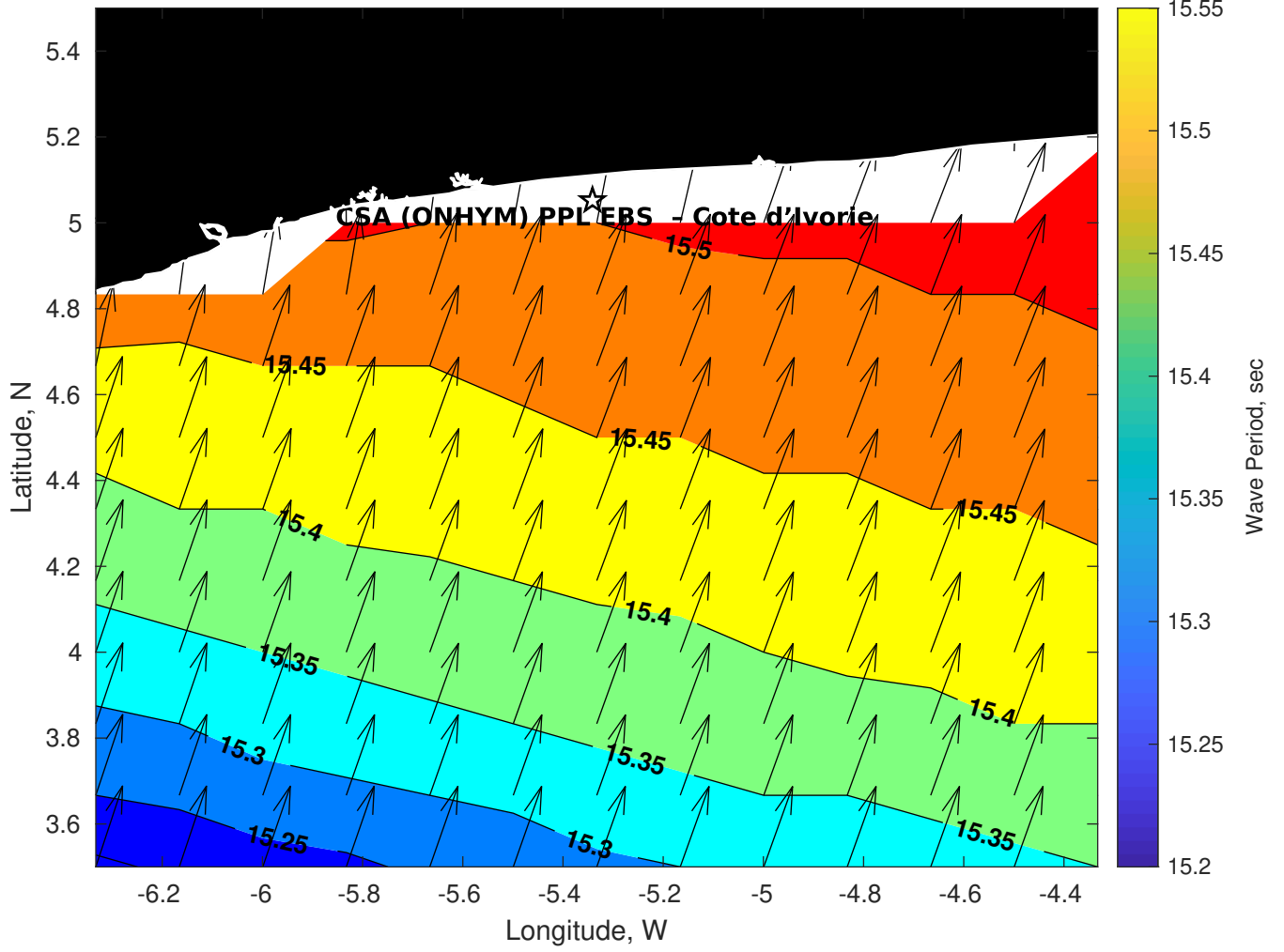
**Met Forecast for CSA (ONHYM) PPL EBS - Cote d'Ivoire from 12-Feb-2025 06:00:00 to 19-Feb-2025 06:00:00**



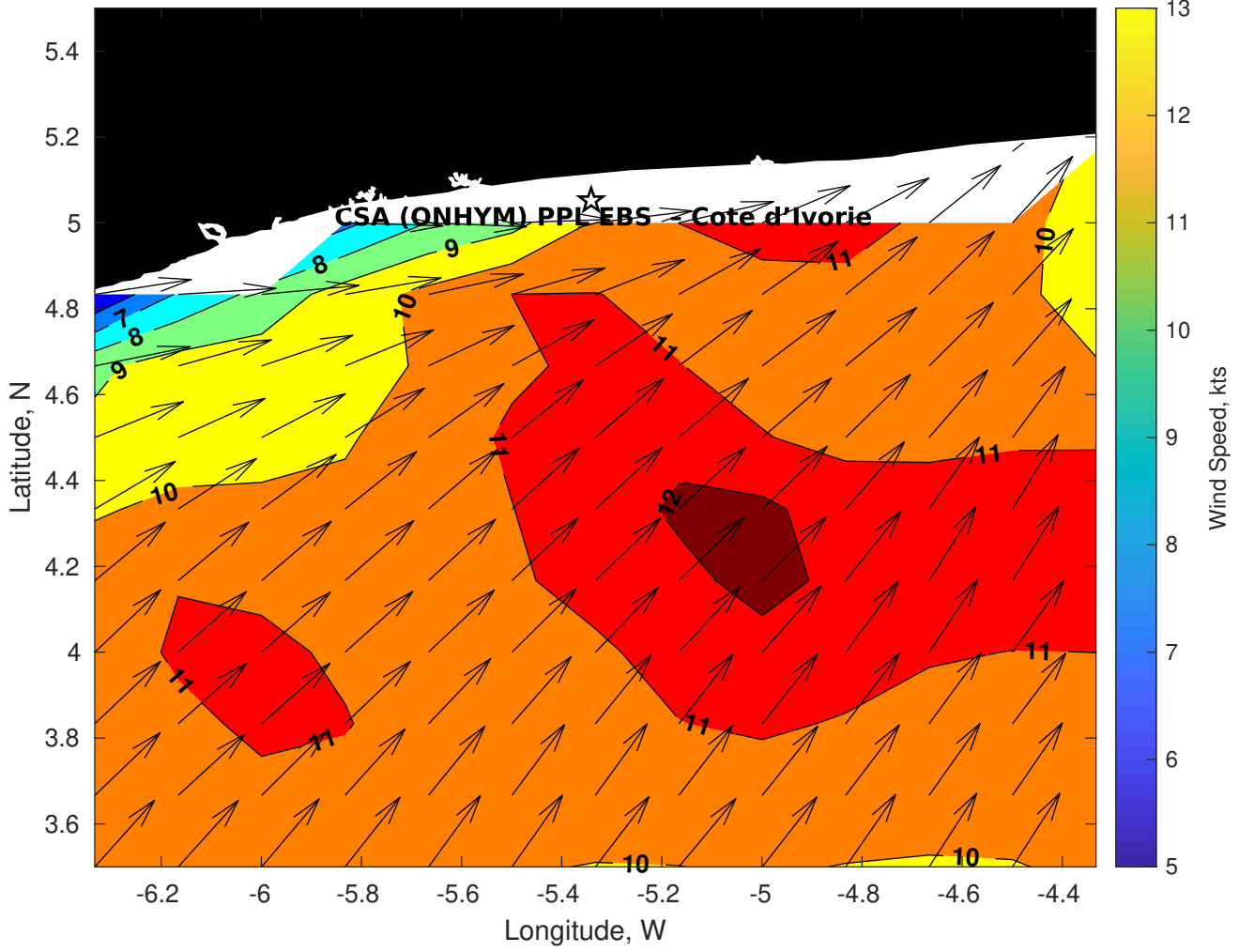
**Wave Height (ft) for CSA (ONHYM) PPL EBS - Cote d'Ivoire at 12-Feb-2025 09:00:00**



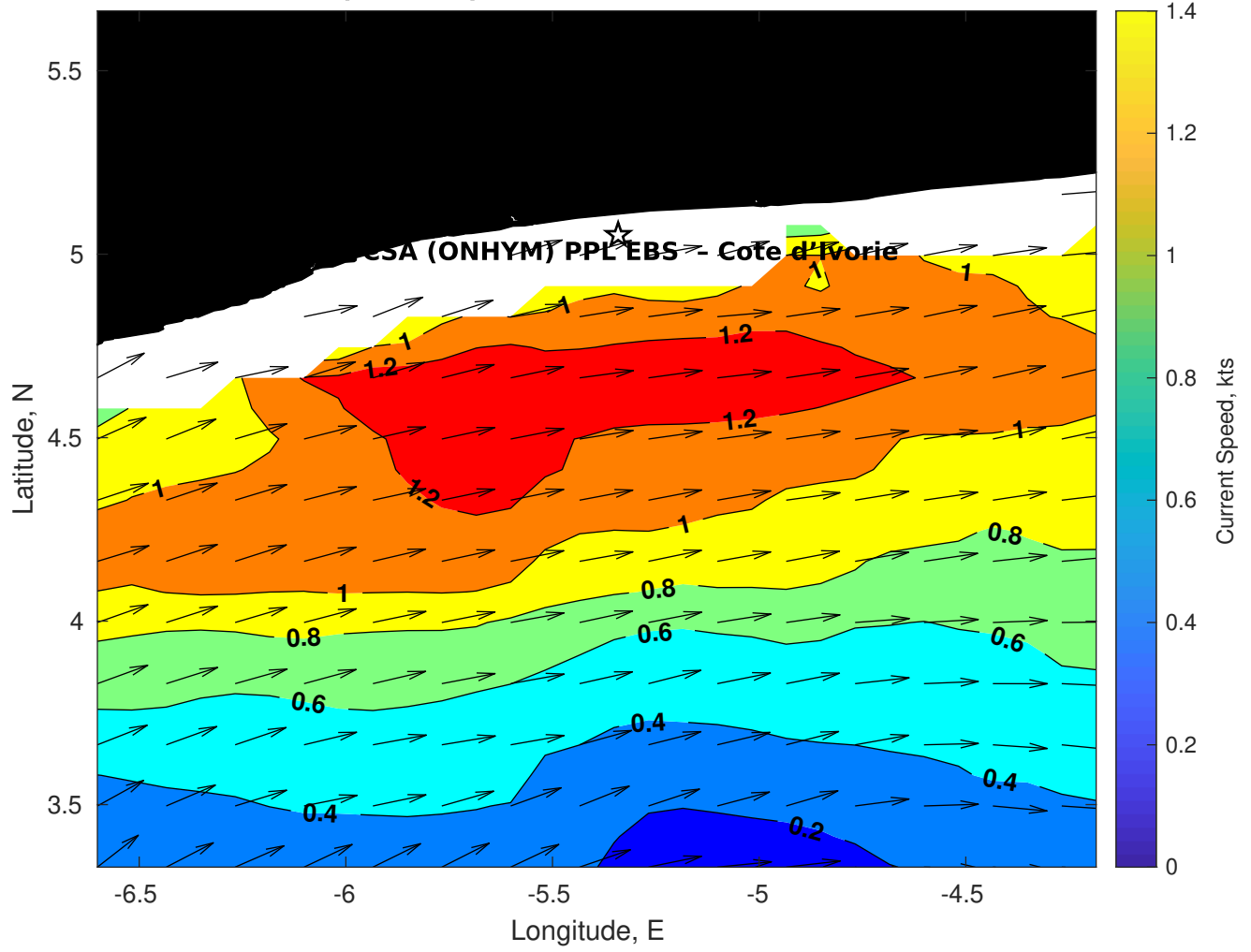
**Wave Period (sec) for CSA (ONHYM) PPL EBS - Cote d'Ivoire at 12-Feb-2025 09:00:00**



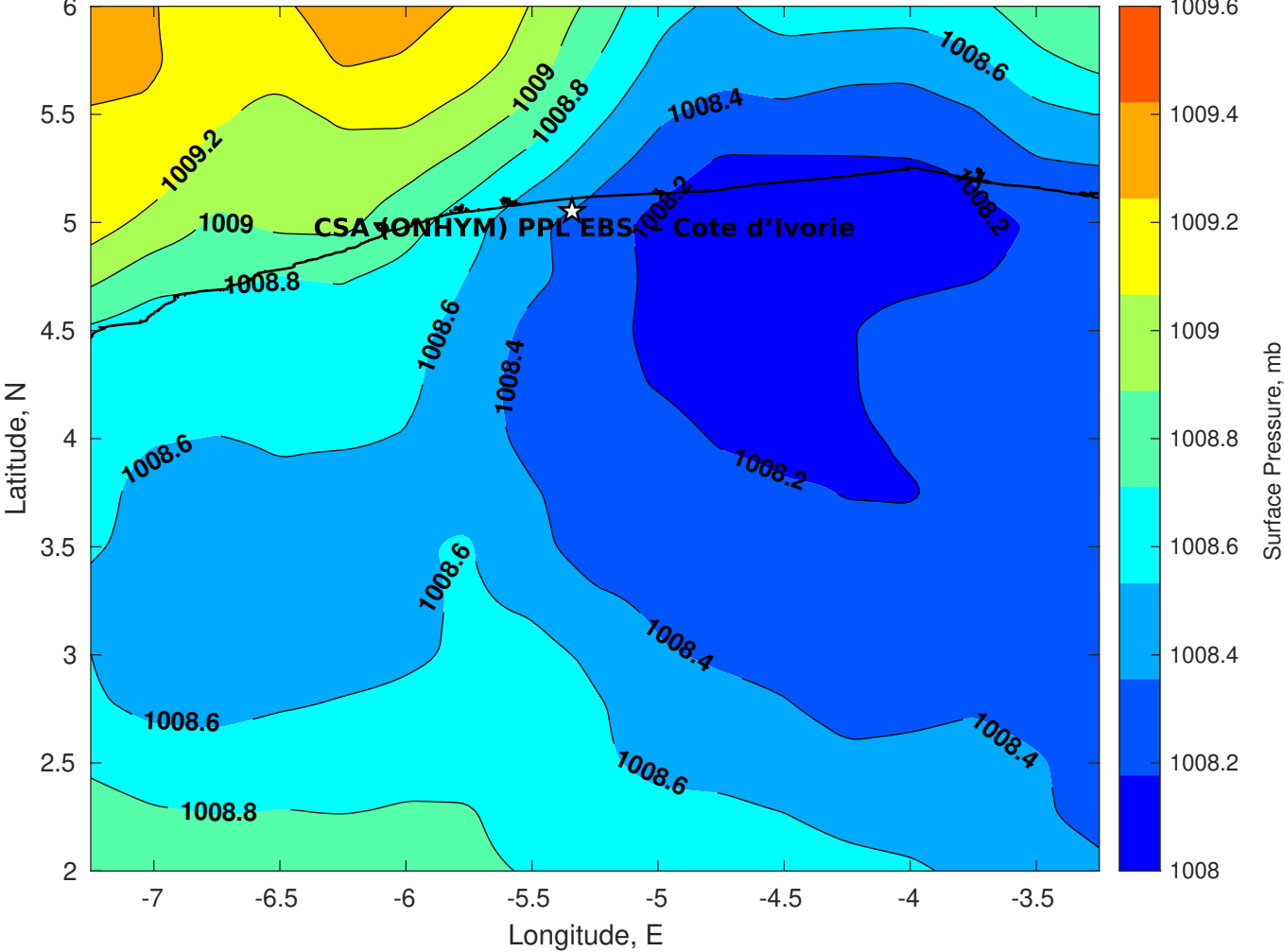
**Winds (kts) for CSA (ONHYM) PPL EBS - Cote d'Ivoire at 12-Feb-2025 09:00:00**



**Surface Currents for CSA (ONHYM) PPL EBS - Cote d'Ivoire at 11-Feb-2025 00:00:00**

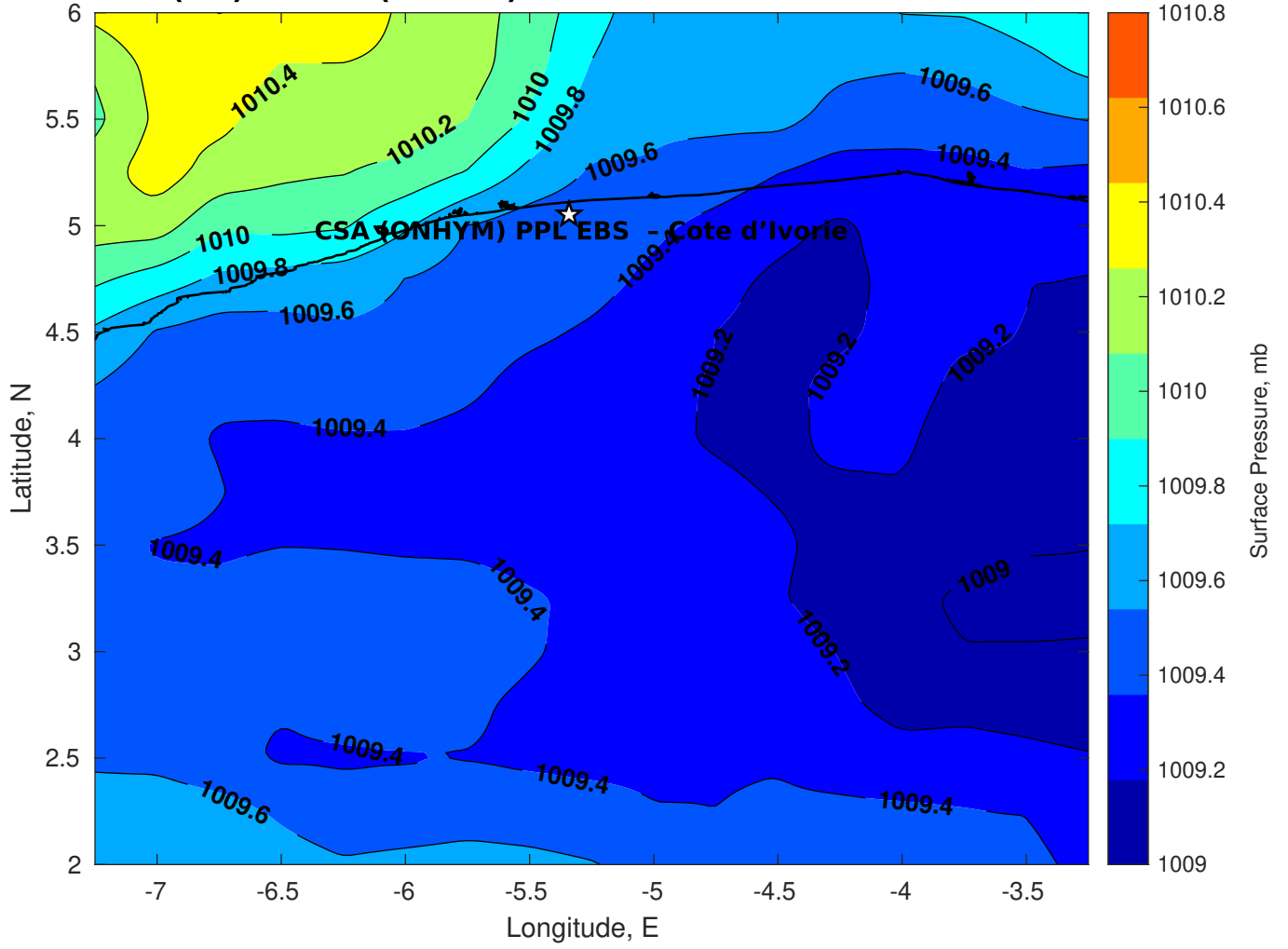


Surface Pressure (mb) for CSA (ONHYM) PPL EBS - Cote d'Ivoire at 12-Feb-2025 06:00:00

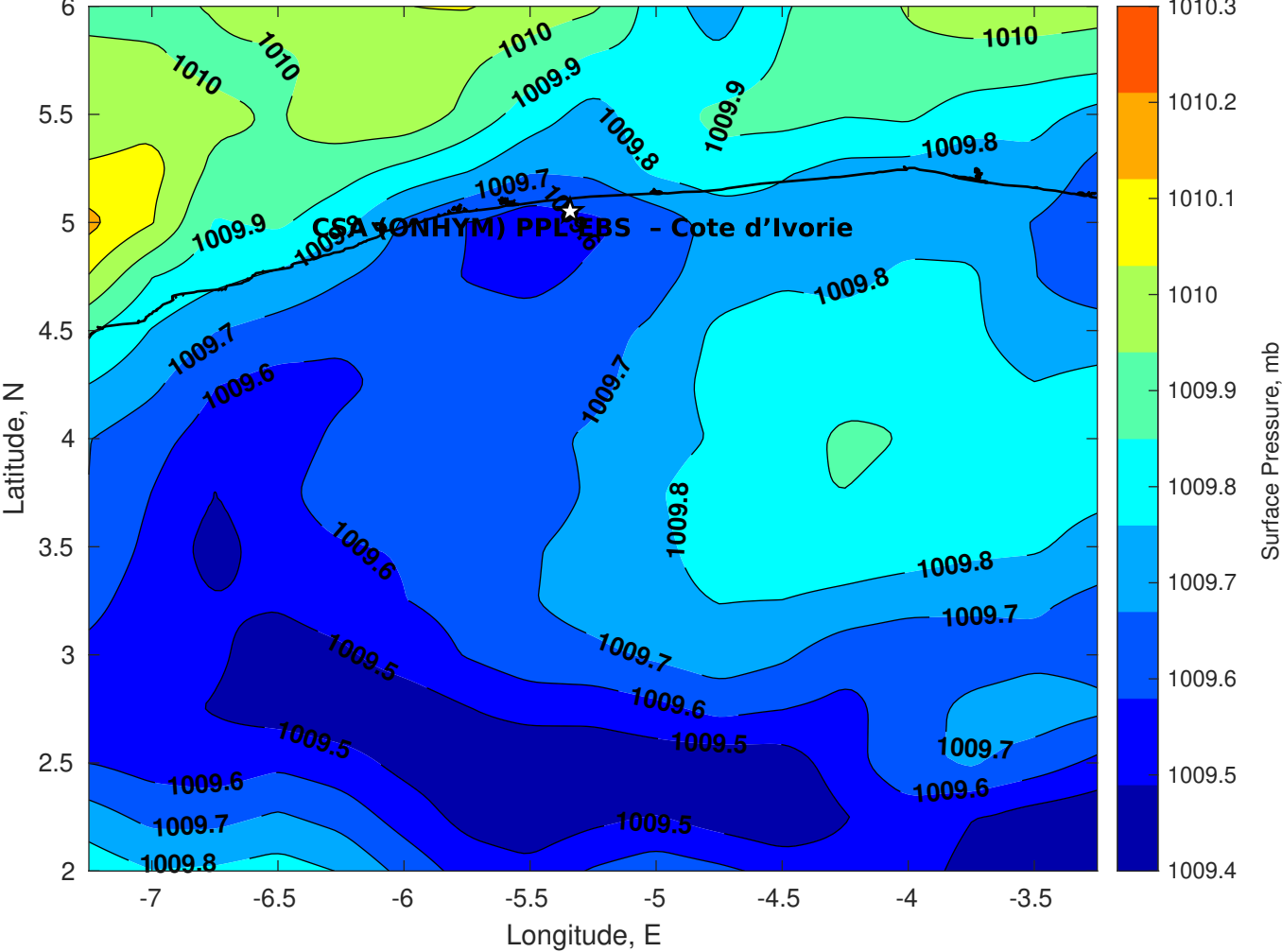




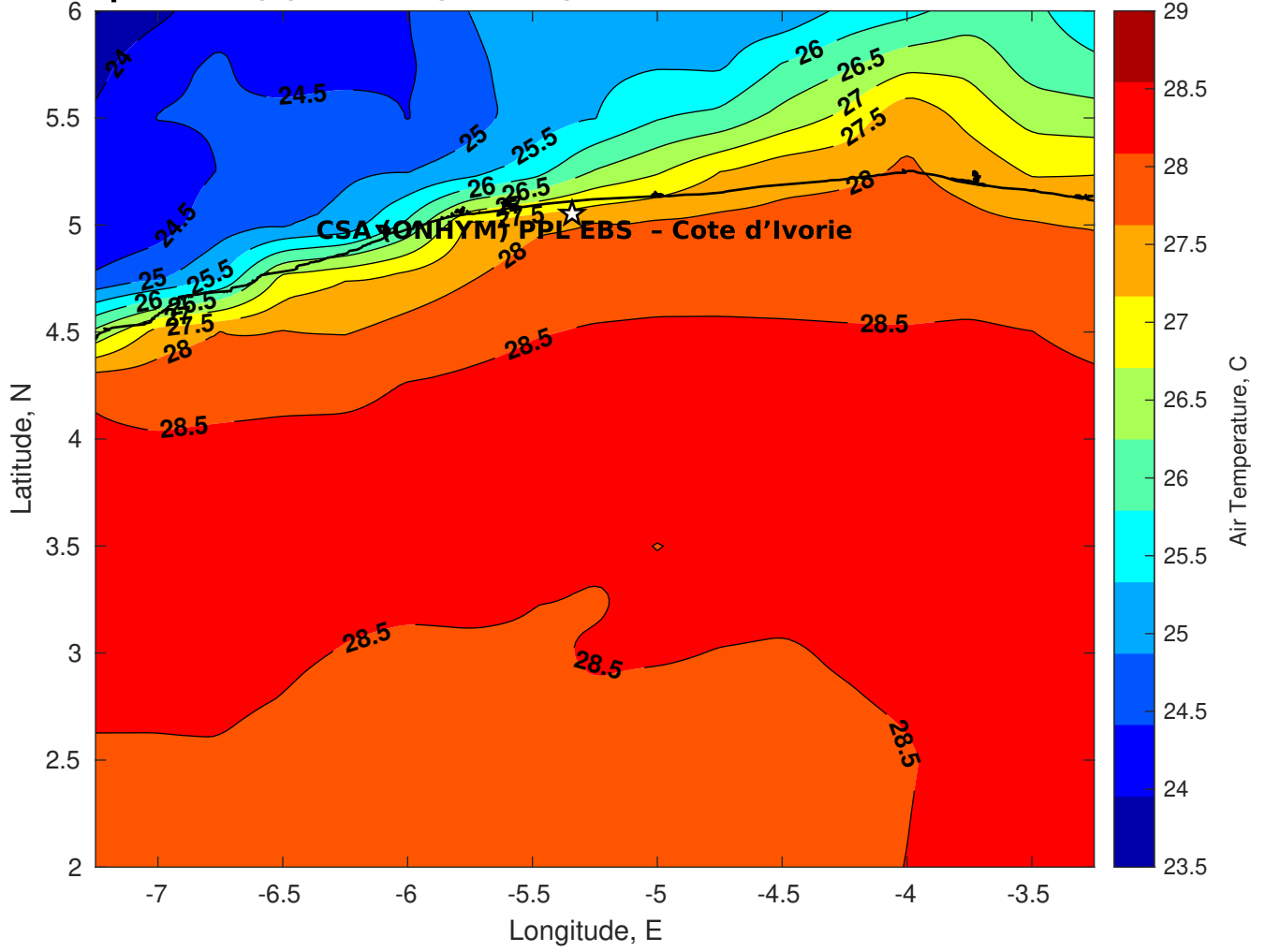
**Surface Pressure (mb) for CSA (ONHYM) PPL EBS - Cote d'Ivoire at 13-Feb-2025 06:00:00**



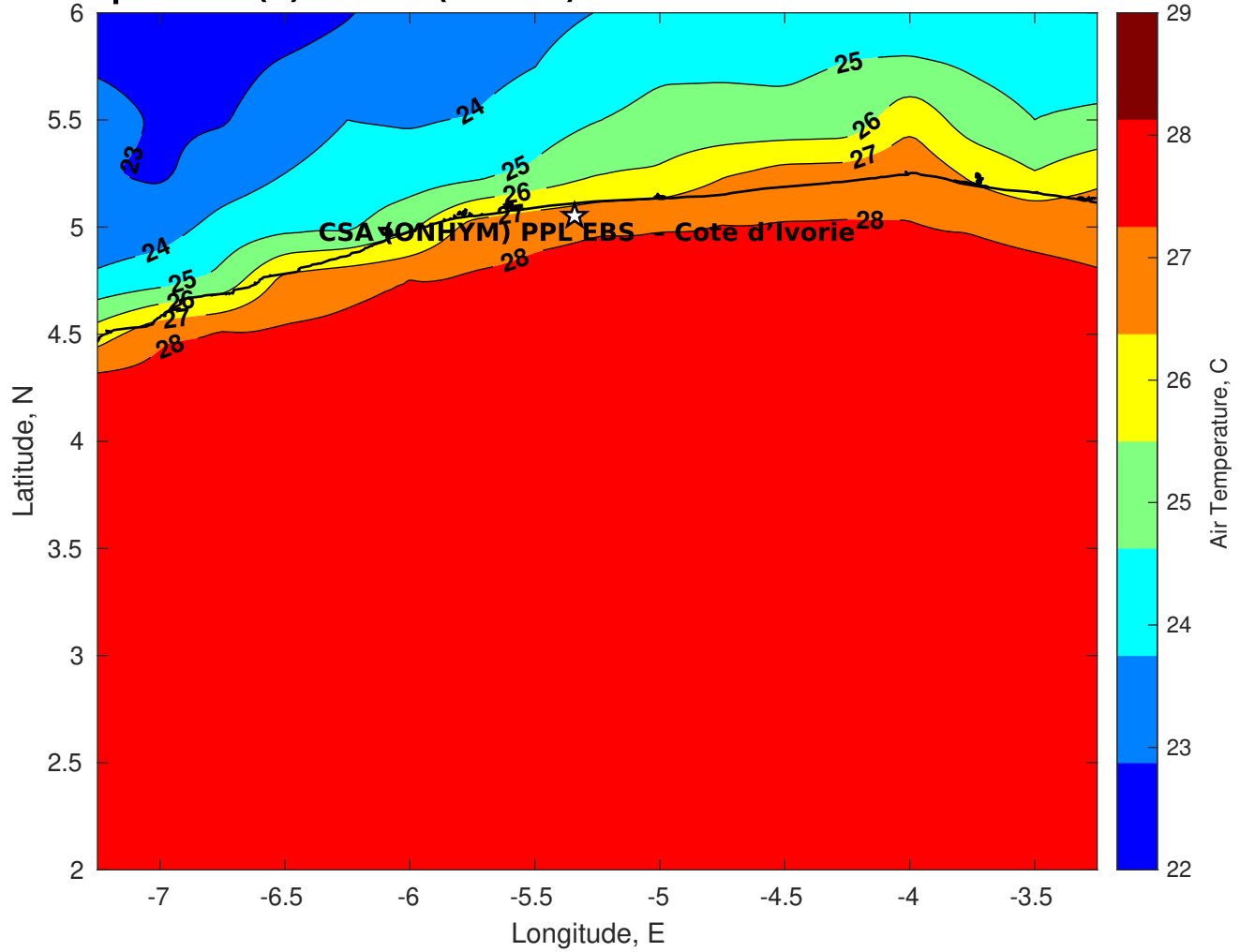
Surface Pressure (mb) for CSA (ONHYM) PPL EBS - Cote d'Ivoire at 14-Feb-2025 06:00:00



**Air Temperature (C) for CSA (ONHYM) PPL EBS - Cote d'Ivoire at 12-Feb-2025**



**Air Temperature (C) for CSA (ONHYM) PPL EBS - Cote d'Ivoire at 12-Feb-2025**



**Air Temperature (C) for CSA (ONHYM) PPL EBS - Cote d'Ivoire at 12-Feb-2025**

