
Marine Weather Forecast for TOTAL Namibia GTS
Forecast valid as of 12-Feb-2025 0900 GMT

All times are local.

Today

Winds: N, 15-20 kts.
Waves: N, 7-8 feet, 8-9 sec.
No currents available.

Tonight

Winds: NE, 15-20 kts.
Waves: N, 6-7 feet, 10-11 sec.
No currents available.

Thursday

Winds: NE, 20-25 kts.
Waves: N, 8-9 feet, 10-11 sec.
No currents available.

Thursday Night

Winds: NE, 20-25 kts.
Waves: N, 10-11 feet, 8-9 sec.
No currents available.

Friday

Winds: NE, 20-25 kts.
Waves: NW, 10-11 feet, 13-14 sec.
No currents available.

Friday Night

Winds: NE, 20-25 kts.
Waves: NW, 11-12 feet, 13-14 sec.
No currents available.

Saturday

Winds: NE, 20-25 kts.
Waves: NW, 10-11 feet, 12-13 sec.
No currents available.

Saturday Night

Winds: NE, 20-25 kts.
Waves: NW, 10-11 feet, 11-12 sec.
No currents available.

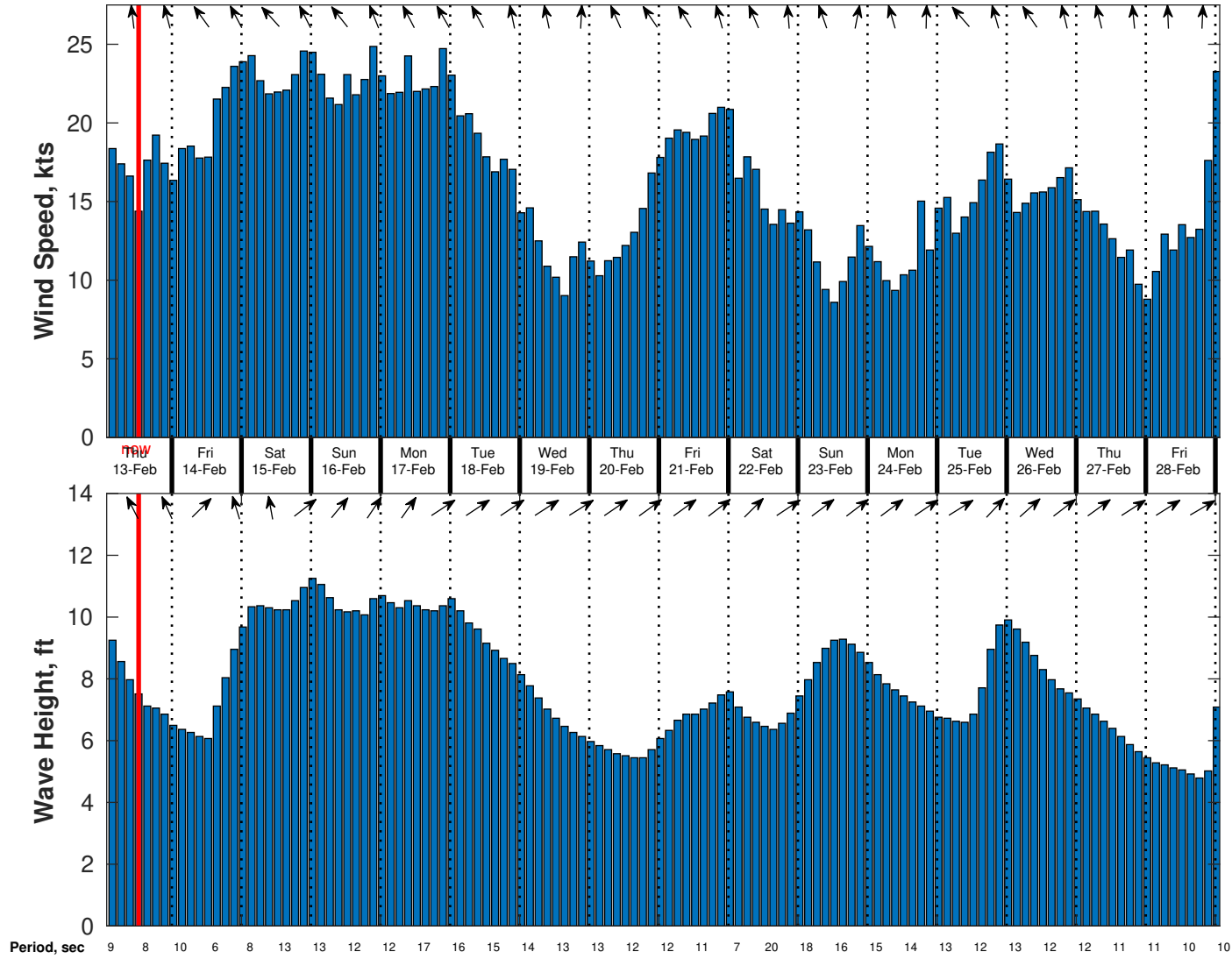
Sunday

Winds: NE, 20-25 kts.
Waves: N, 10-11 feet, 17-18 sec.
No currents available.

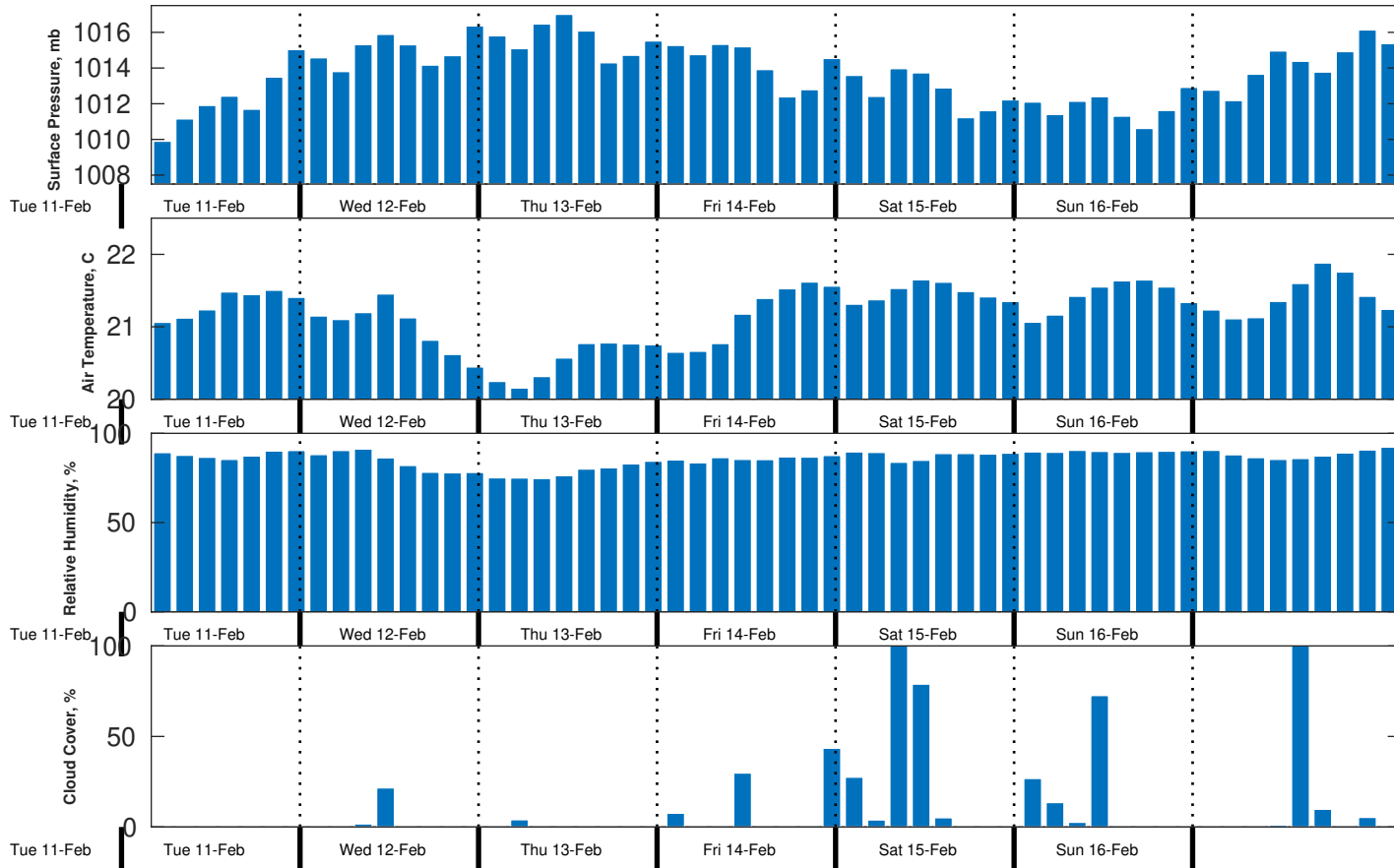
Sunday Night

Winds: NE, 20-25 kts.
Waves: NW, 10-11 feet, 15-16 sec.
No currents available.

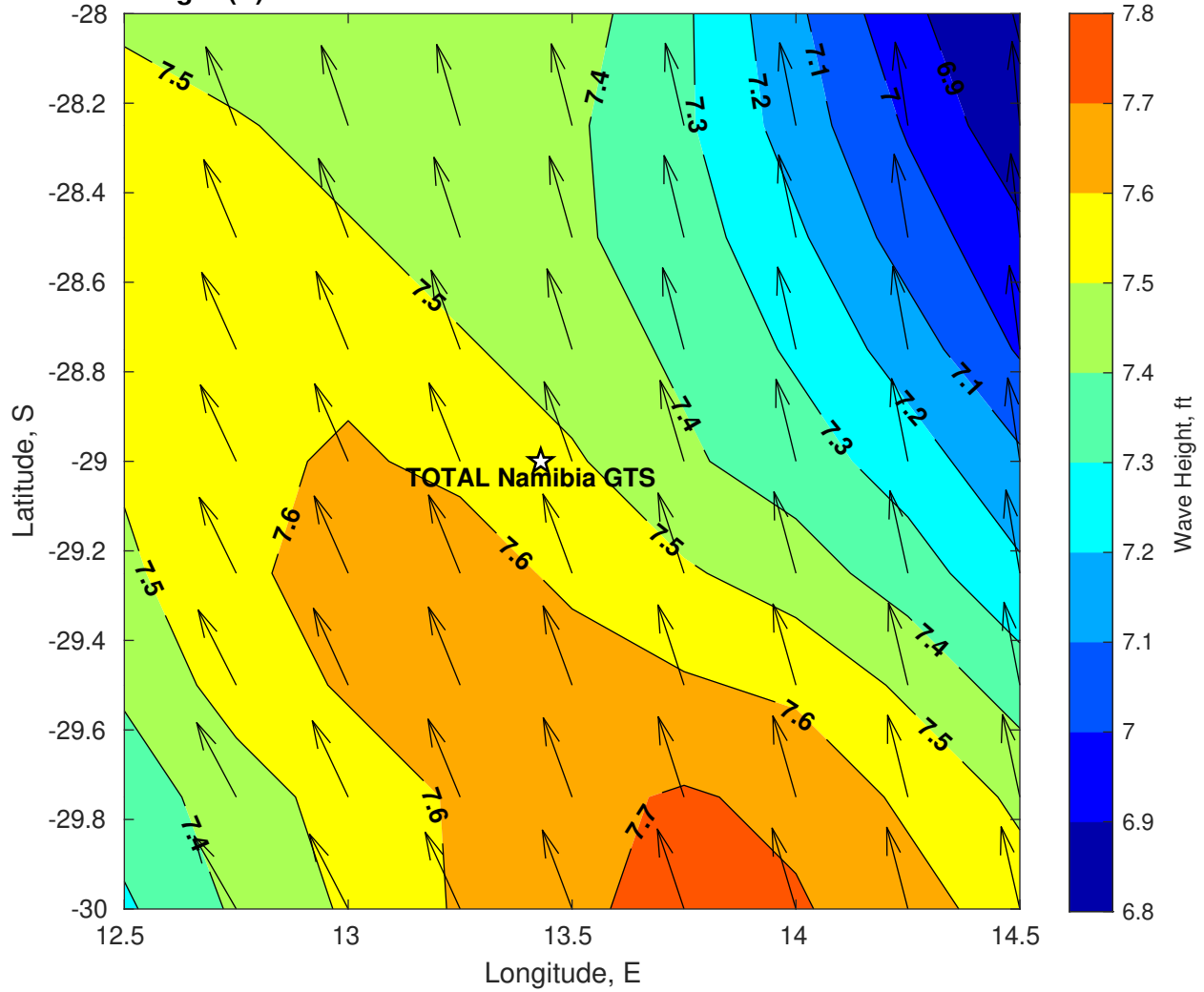
Wind & Wave Forecast for TOTAL Namibia GTS from 12-Feb-2025 02:00:00 to 28-Feb-2025 02:00:00



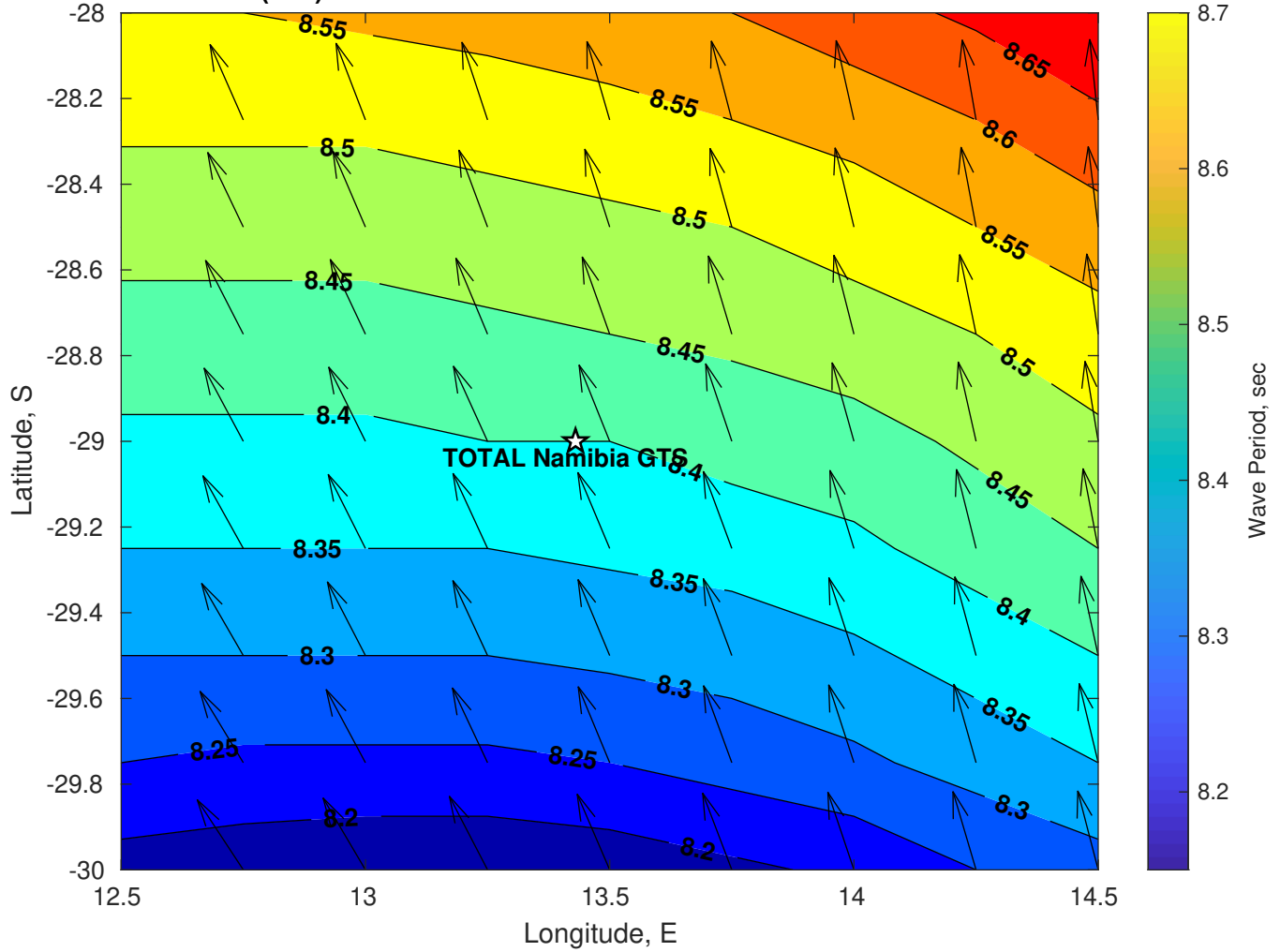
Met Forecast for TOTAL Namibia GTS from 12-Feb-2025 00:00:00 to 19-Feb-2025 00:00:00



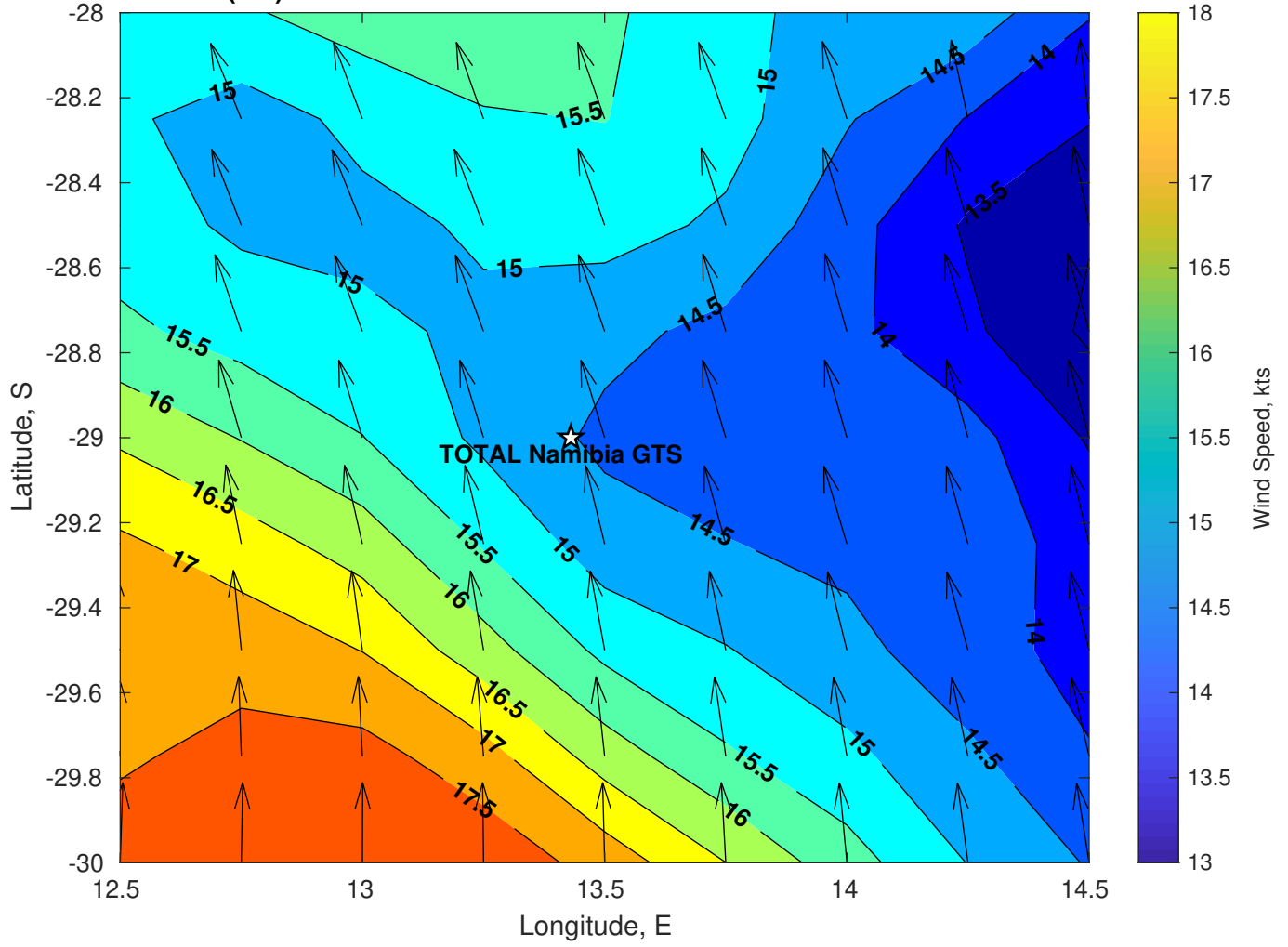
Wave Height (ft) for TOTAL Namibia GTS at 12-Feb-2025 09:00:00



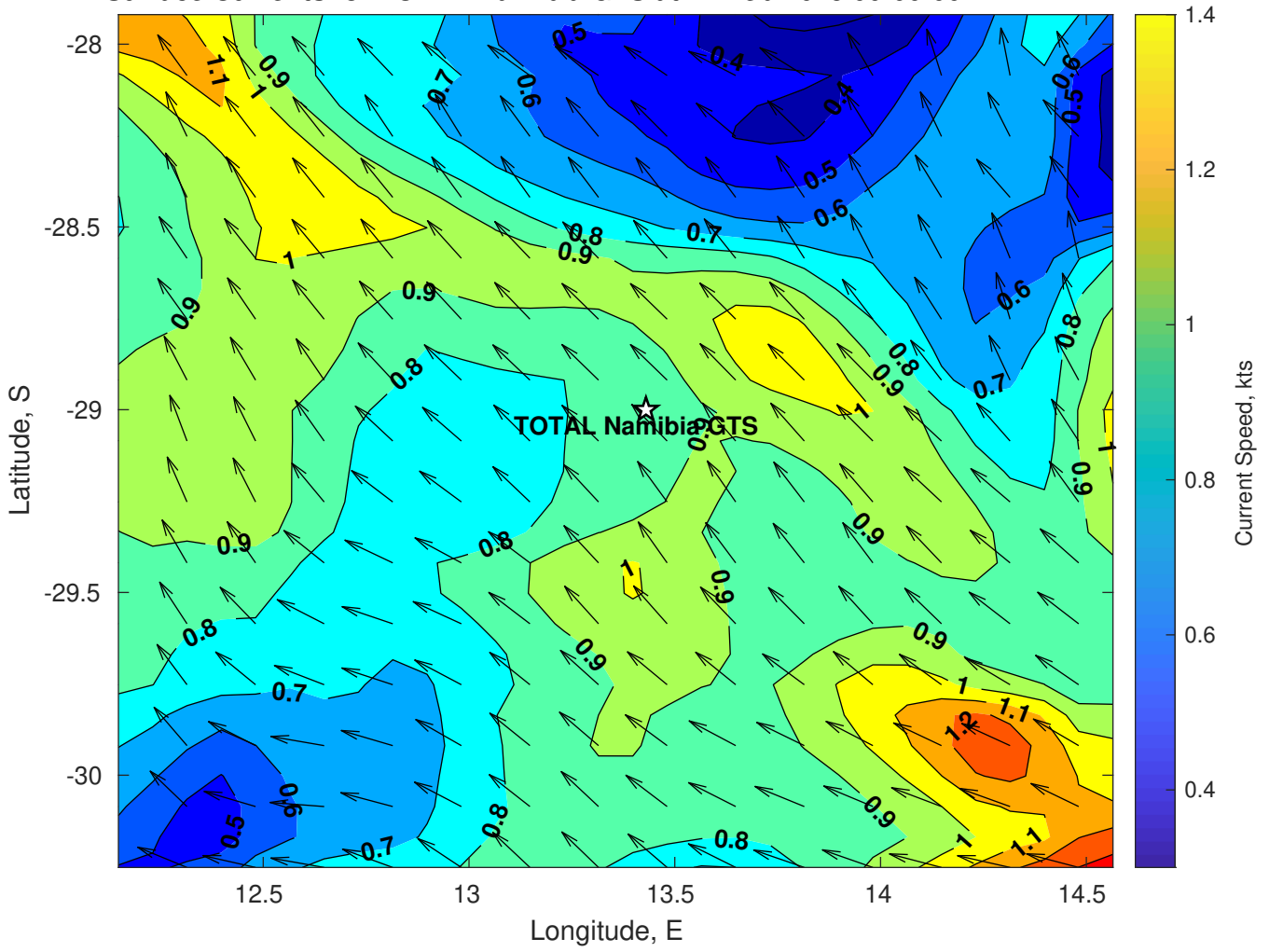
Wave Period (sec) for TOTAL Namibia GTS at 12-Feb-2025 09:00:00



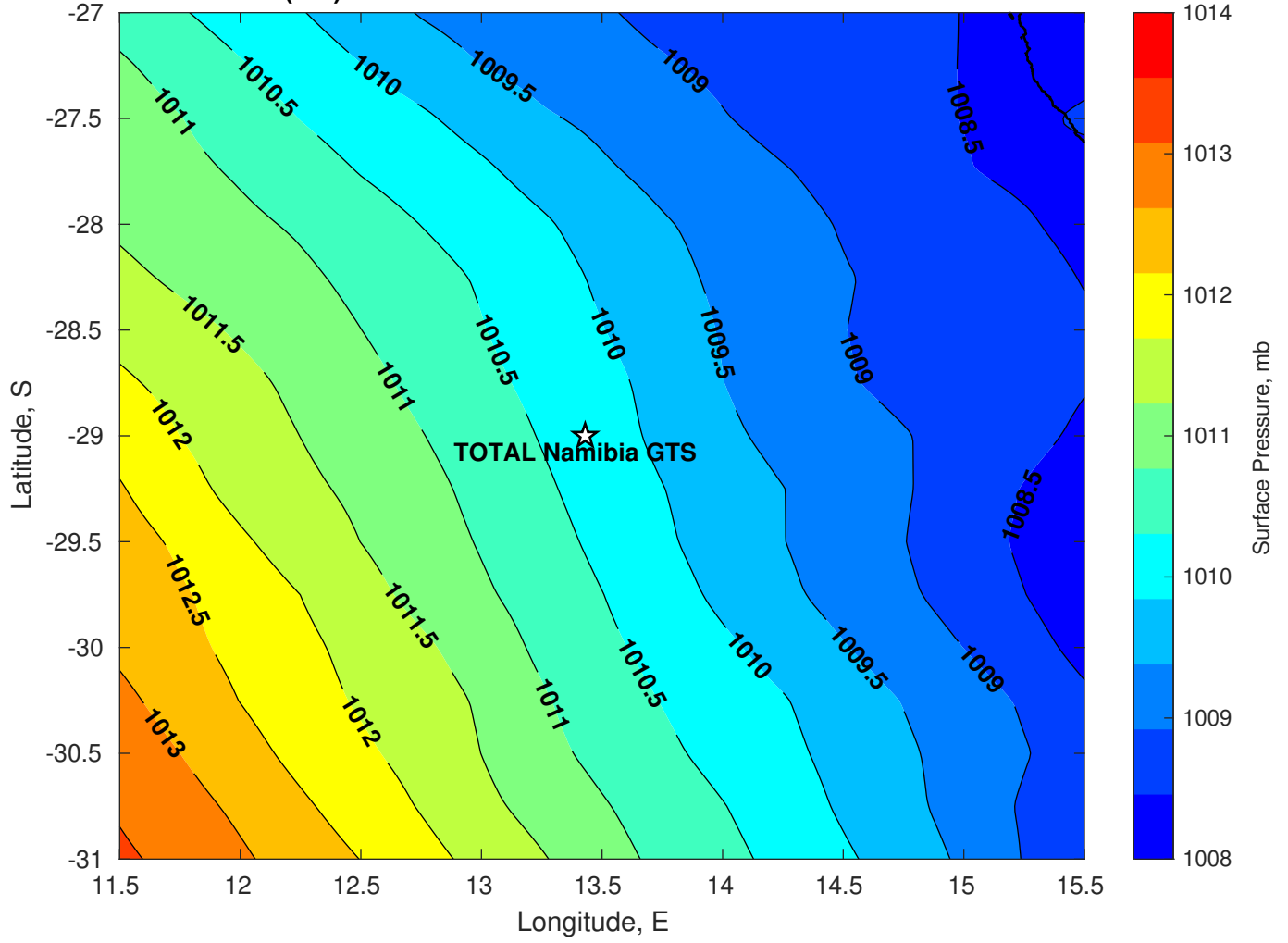
Winds (kts) for TOTAL Namibia GTS at 12-Feb-2025 09:00:00



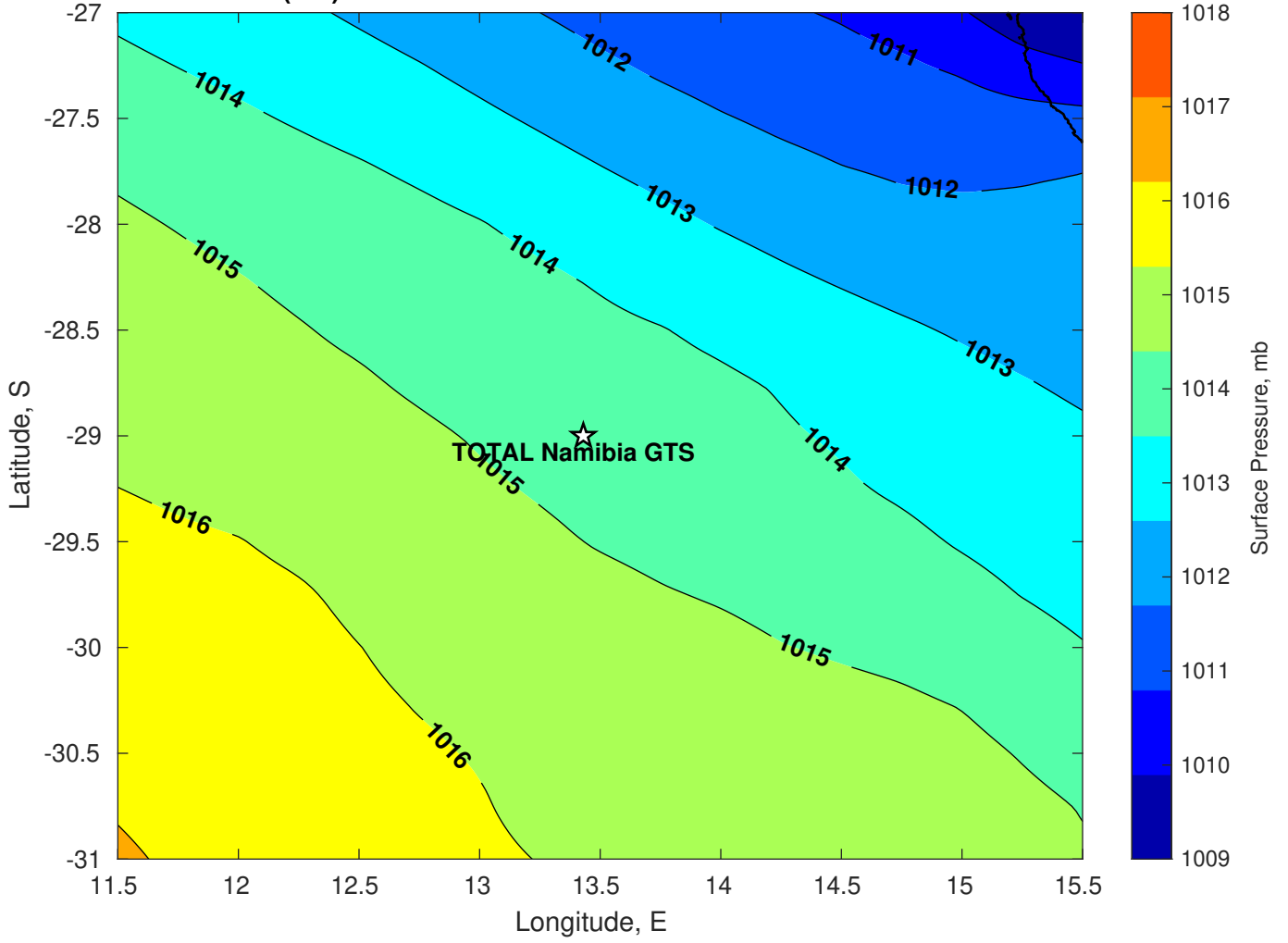
Surface Currents for TOTAL Namibia GTS at 11-Feb-2025 00:00:00



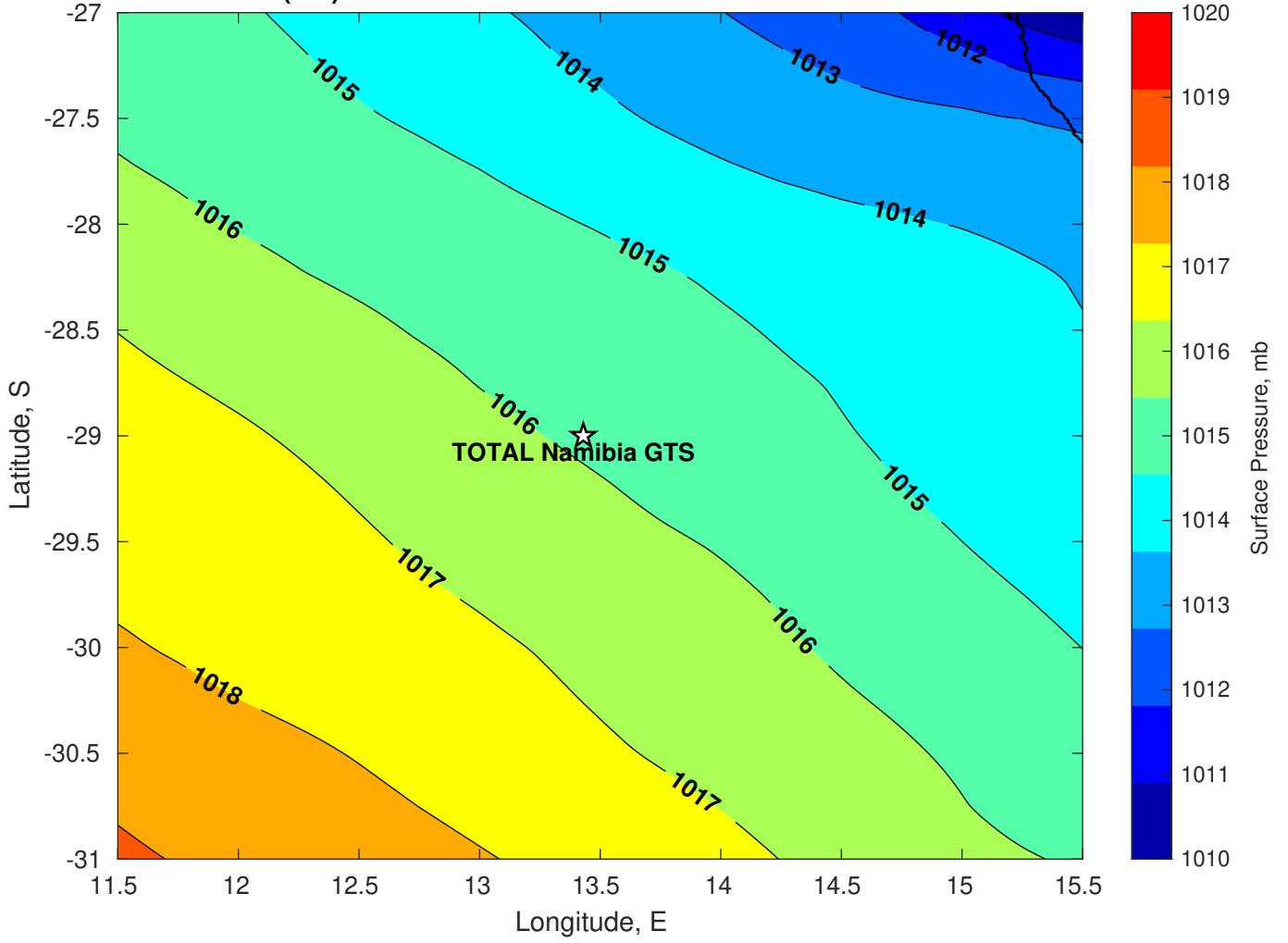
Surface Pressure (mb) for TOTAL Namibia GTS at 12-Feb-2025 00:00:00



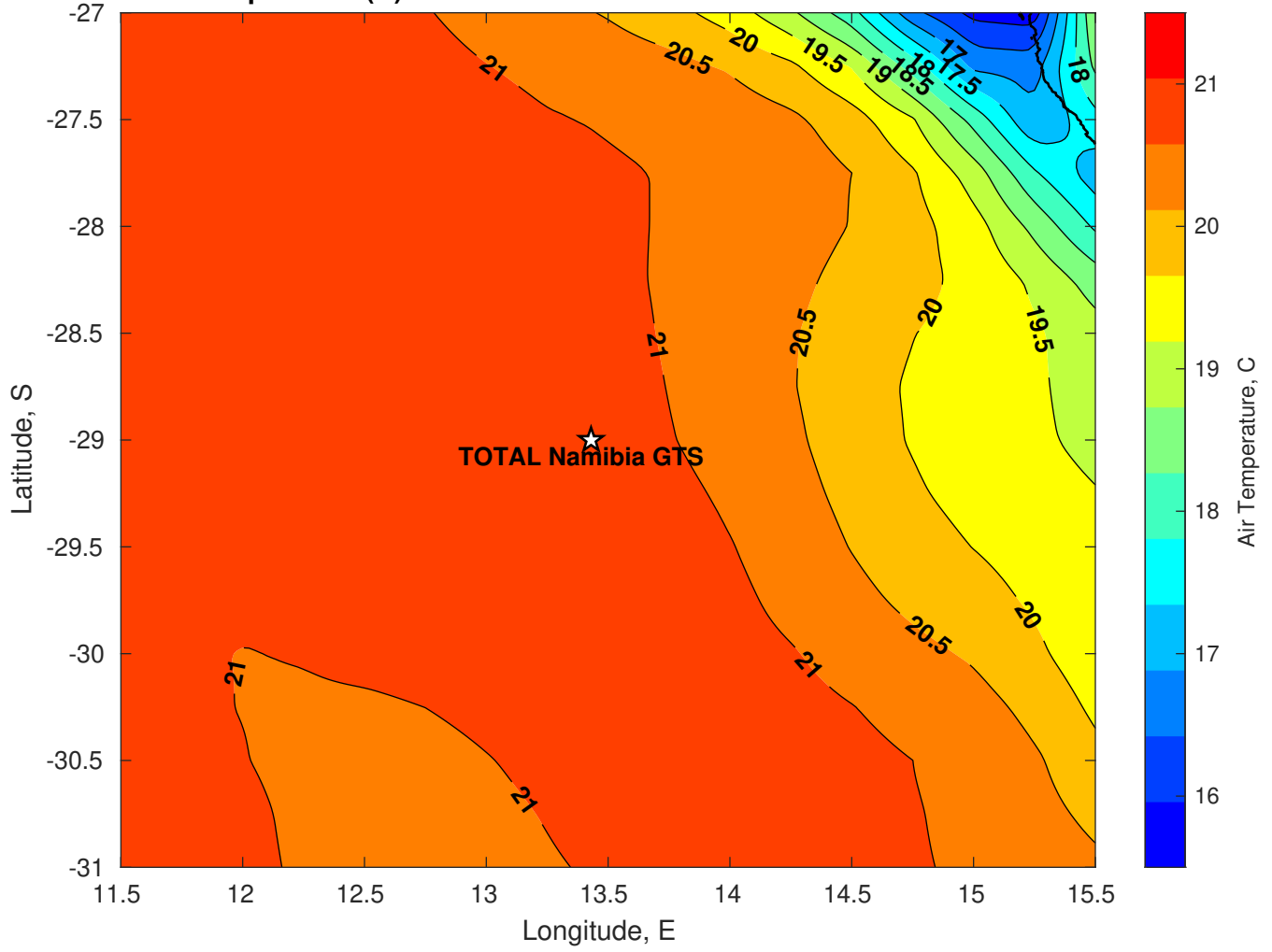
Surface Pressure (mb) for TOTAL Namibia GTS at 13-Feb-2025 00:00:00



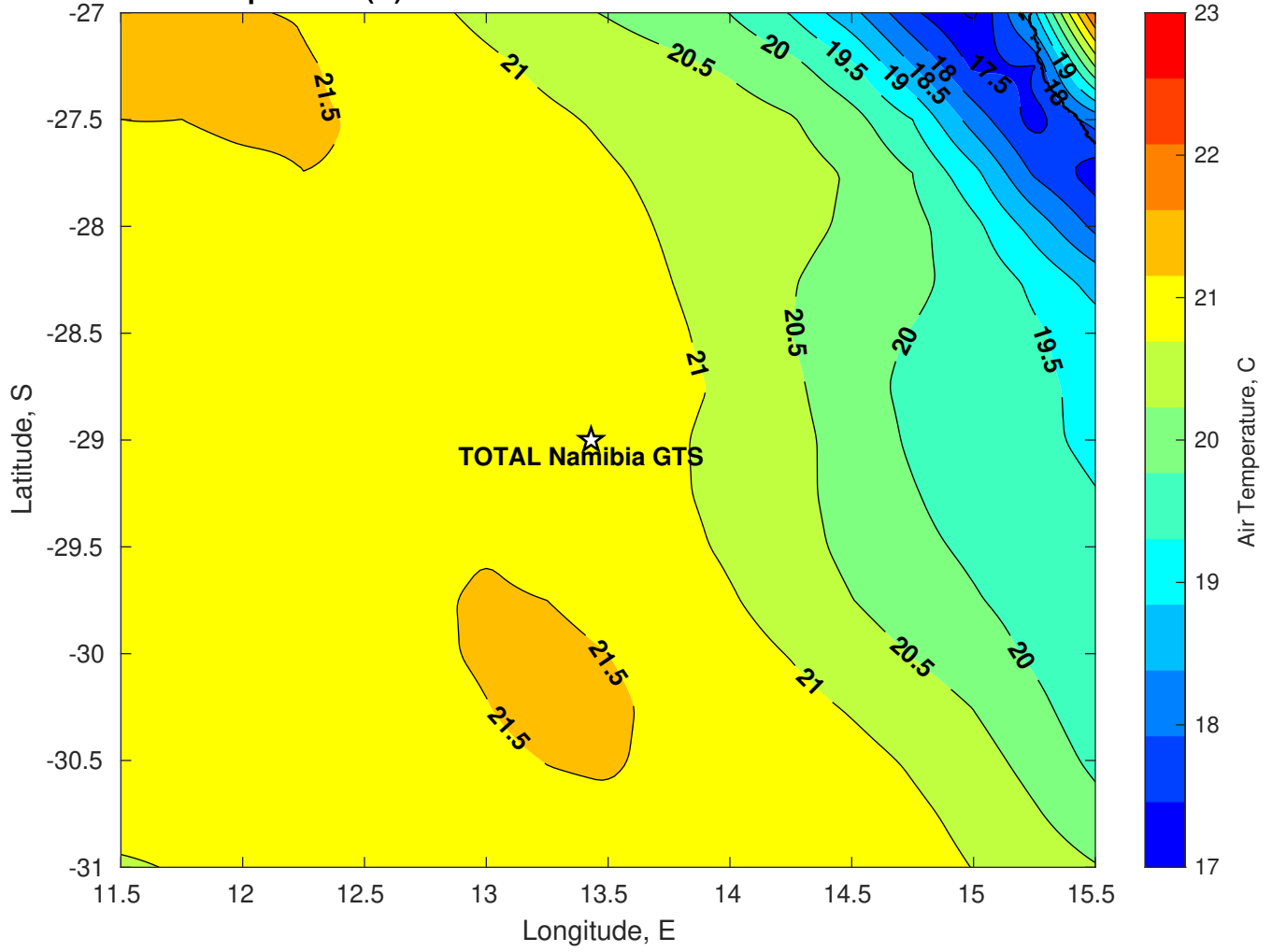
Surface Pressure (mb) for TOTAL Namibia GTS at 14-Feb-2025 00:00:00



Air Temperature (C) for TOTAL Namibia GTS at 12-Feb-2025



Air Temperature (C) for TOTAL Namibia GTS at 12-Feb-2025



Air Temperature (C) for TOTAL Namibia GTS at 12-Feb-2025

