

\*\*\*\*\*  
Marine Weather Forecast for Gyre  
Forecast valid as of 13-Feb-2025 0900 GMT  
\*\*\*\*\*

All times are local.

Today

Winds: NE, 5-10 kts.  
Waves: NW, 3-4 feet, 17-18 sec.  
No currents available.

Tonight

Winds: NE, 5-10 kts.  
Waves: NW, 4-5 feet, 15-16 sec.  
No currents available.

Friday

Winds: E, 5-10 kts.  
Waves: NW, 4-5 feet, 13-14 sec.  
No currents available.

Friday Night

Winds: NE, 5-10 kts.  
Waves: NW, 4-5 feet, 15-16 sec.  
No currents available.

Saturday

Winds: NW, 15-20 kts.  
Waves: NW, 5-6 feet, 14-15 sec.  
No currents available.

Saturday Night

Winds: N, 15-20 kts.  
Waves: NW, 7-8 feet, 13-14 sec.  
No currents available.

Sunday

Winds: N, 10-15 kts.  
Waves: NW, 7-8 feet, 16-17 sec.  
No currents available.

Sunday Night

Winds: NE, 5-10 kts.  
Waves: NW, 7-8 feet, 15-16 sec.  
No currents available.

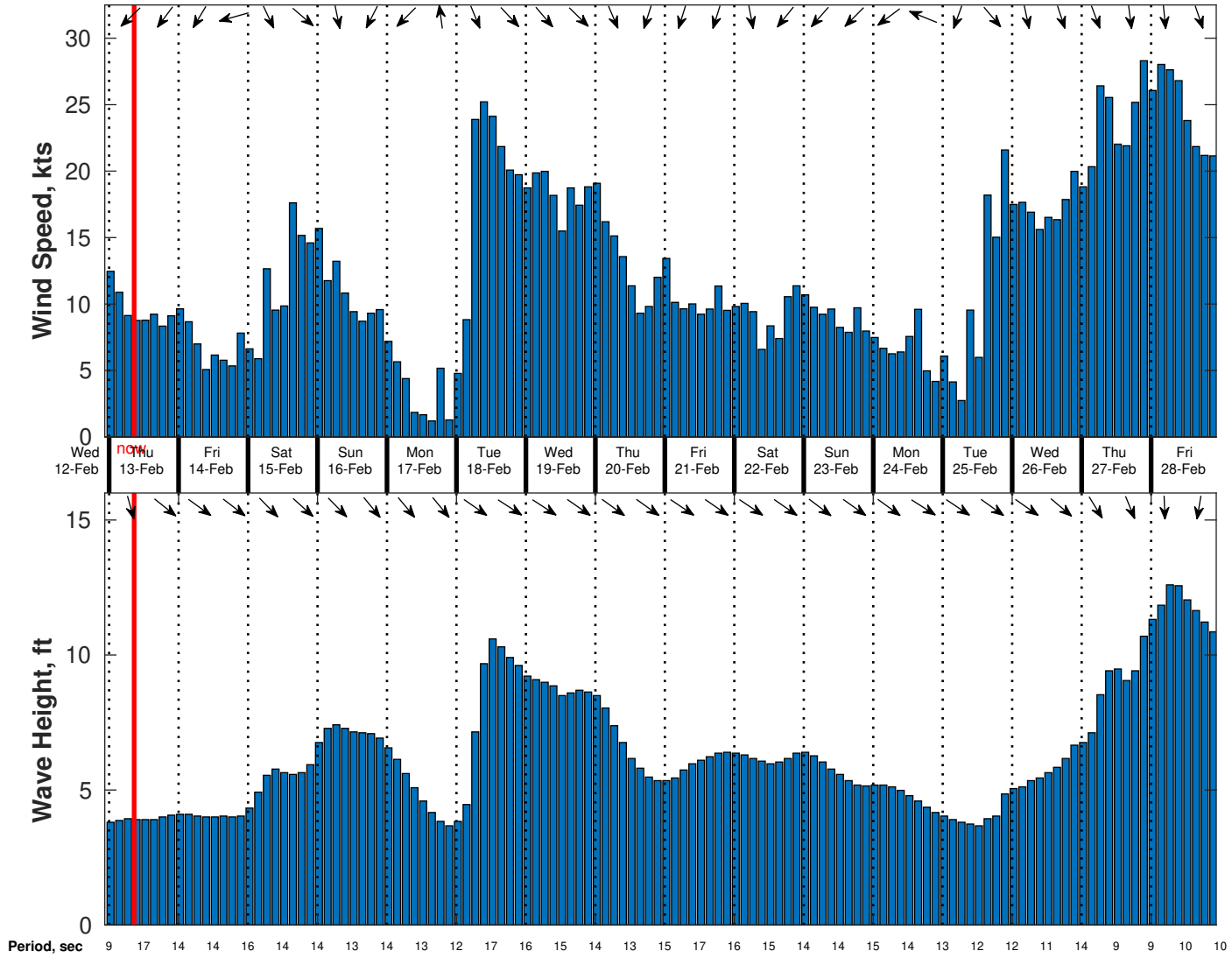
Monday

Winds: E, less than 5 kts.  
Waves: NW, 5-6 feet, 14-15 sec.  
No currents available.

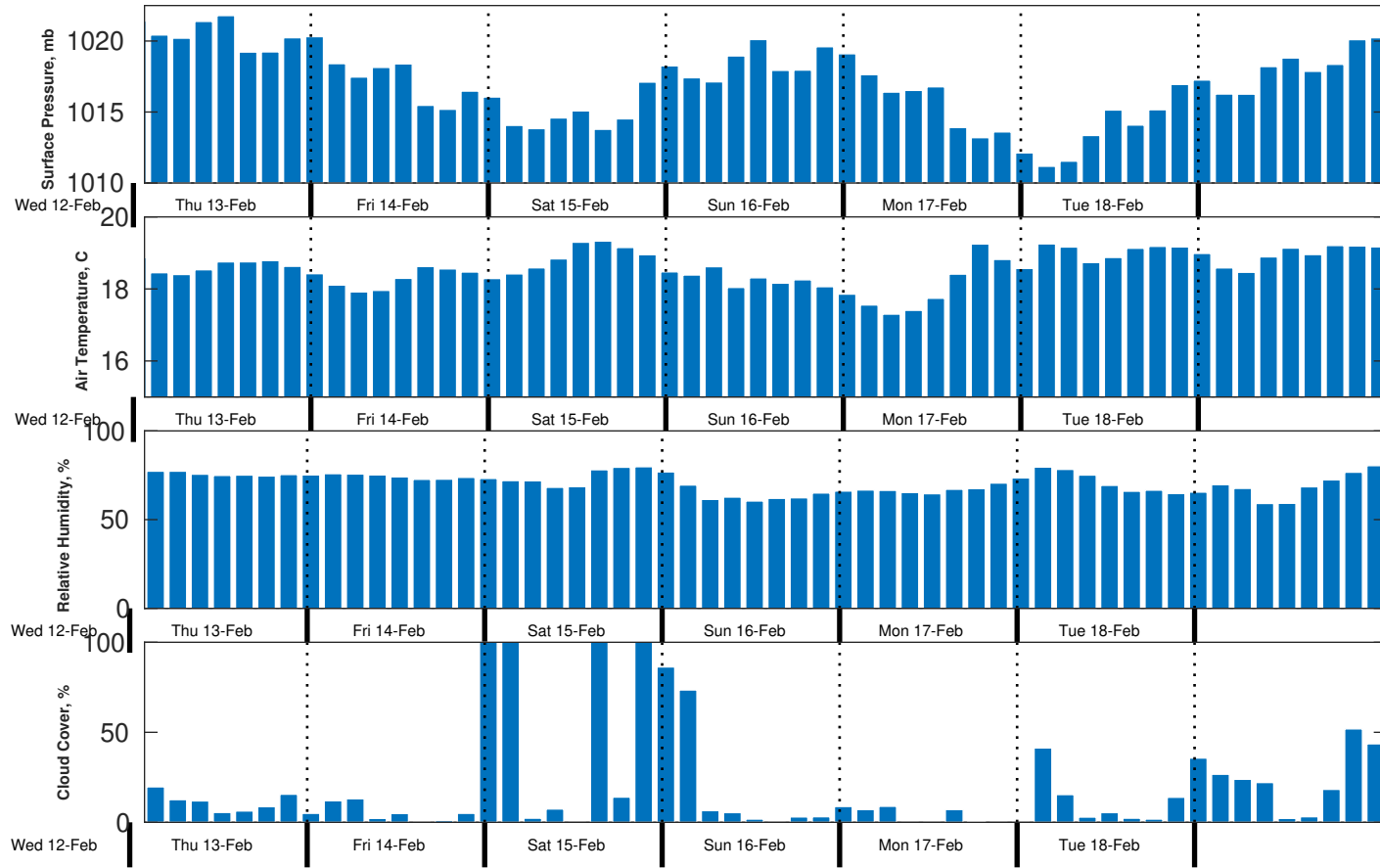
Monday Night

Winds: NE, 5-10 kts.  
Waves: NW, 4-5 feet, 16-17 sec.  
No currents available.

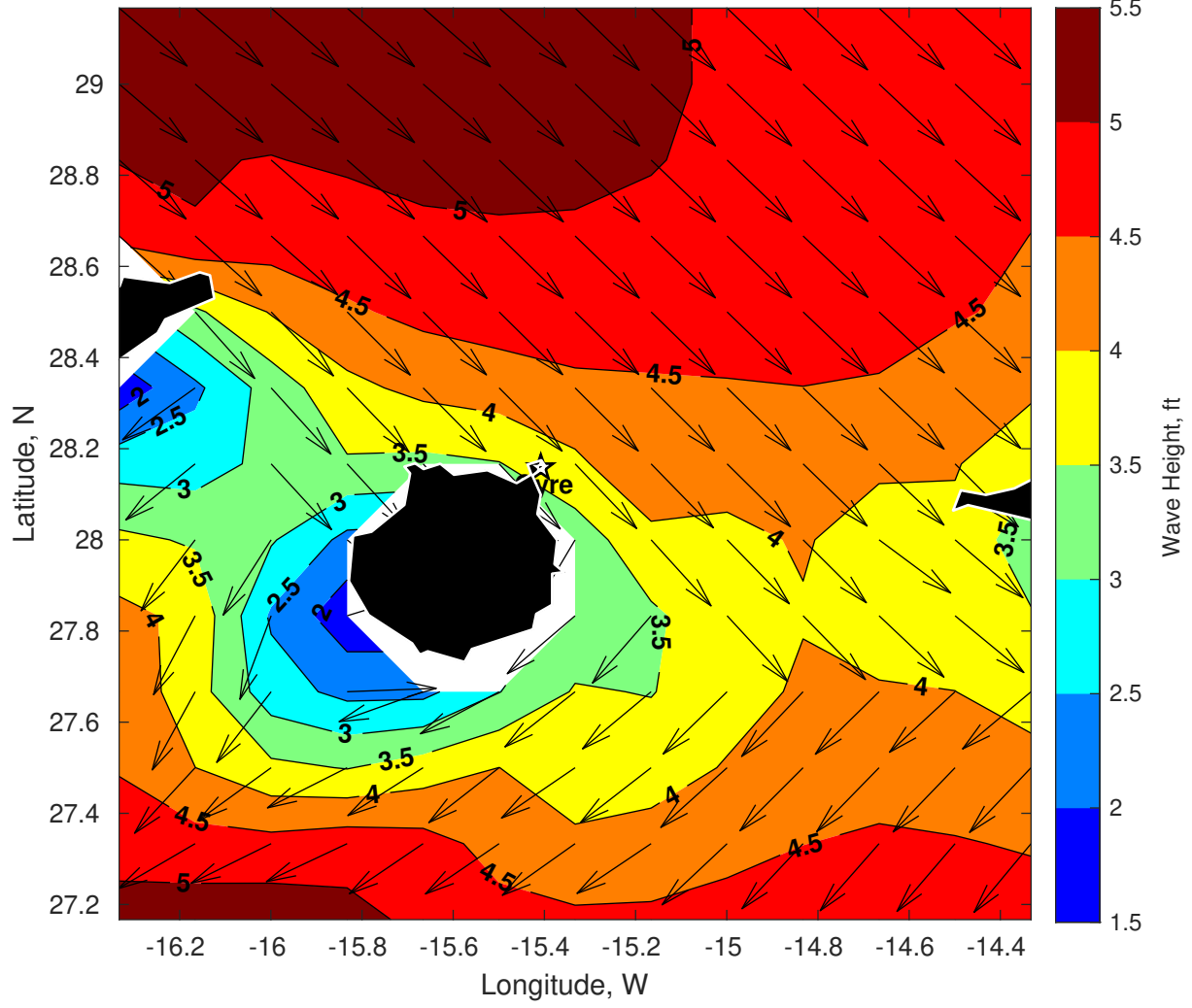
Wind & Wave Forecast for Gyre from 12-Feb-2025 23:00:00 to 28-Feb-2025 23:00:00



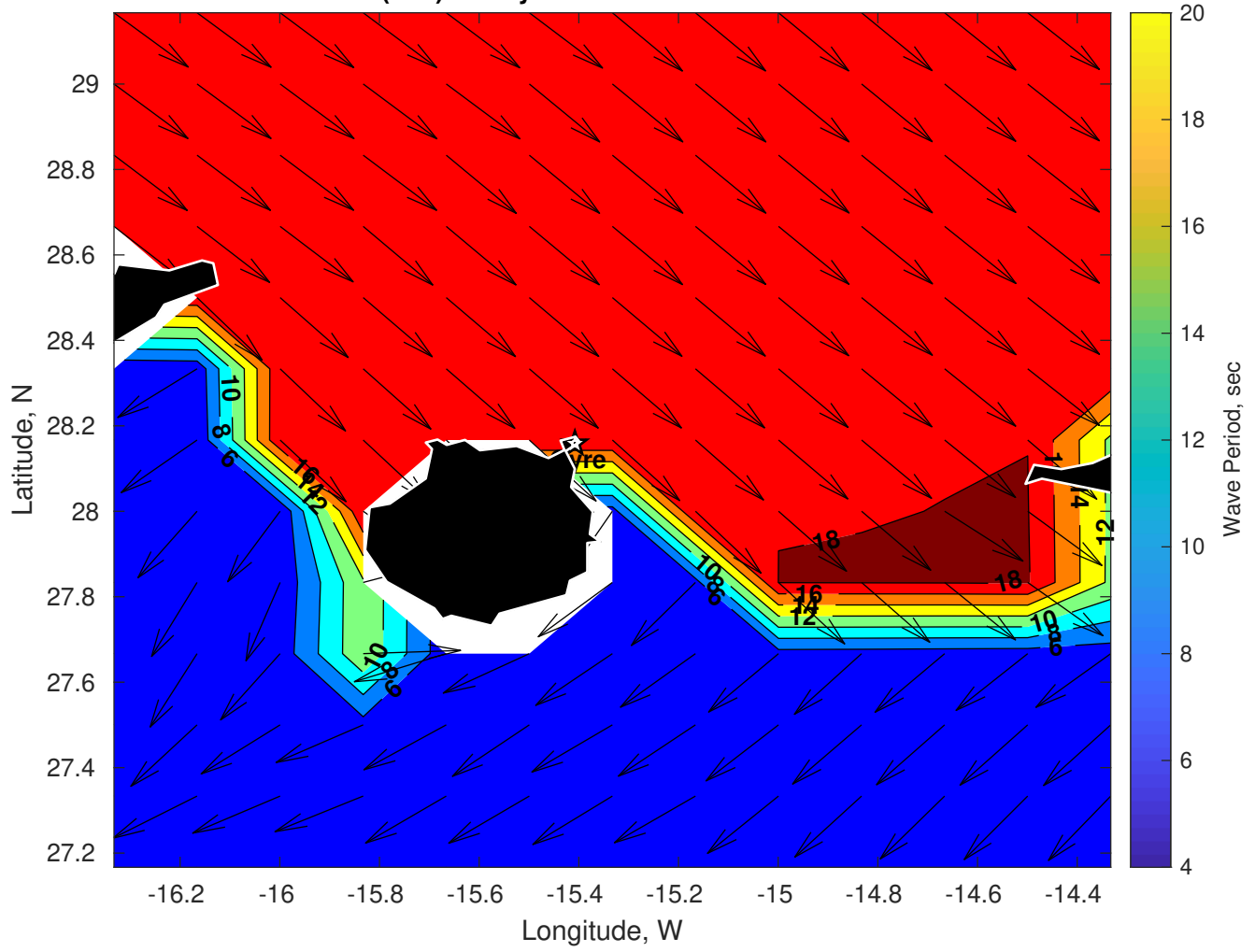
### Met Forecast for Gyre from 12-Feb-2025 23:00:00 to 19-Feb-2025 23:00:00



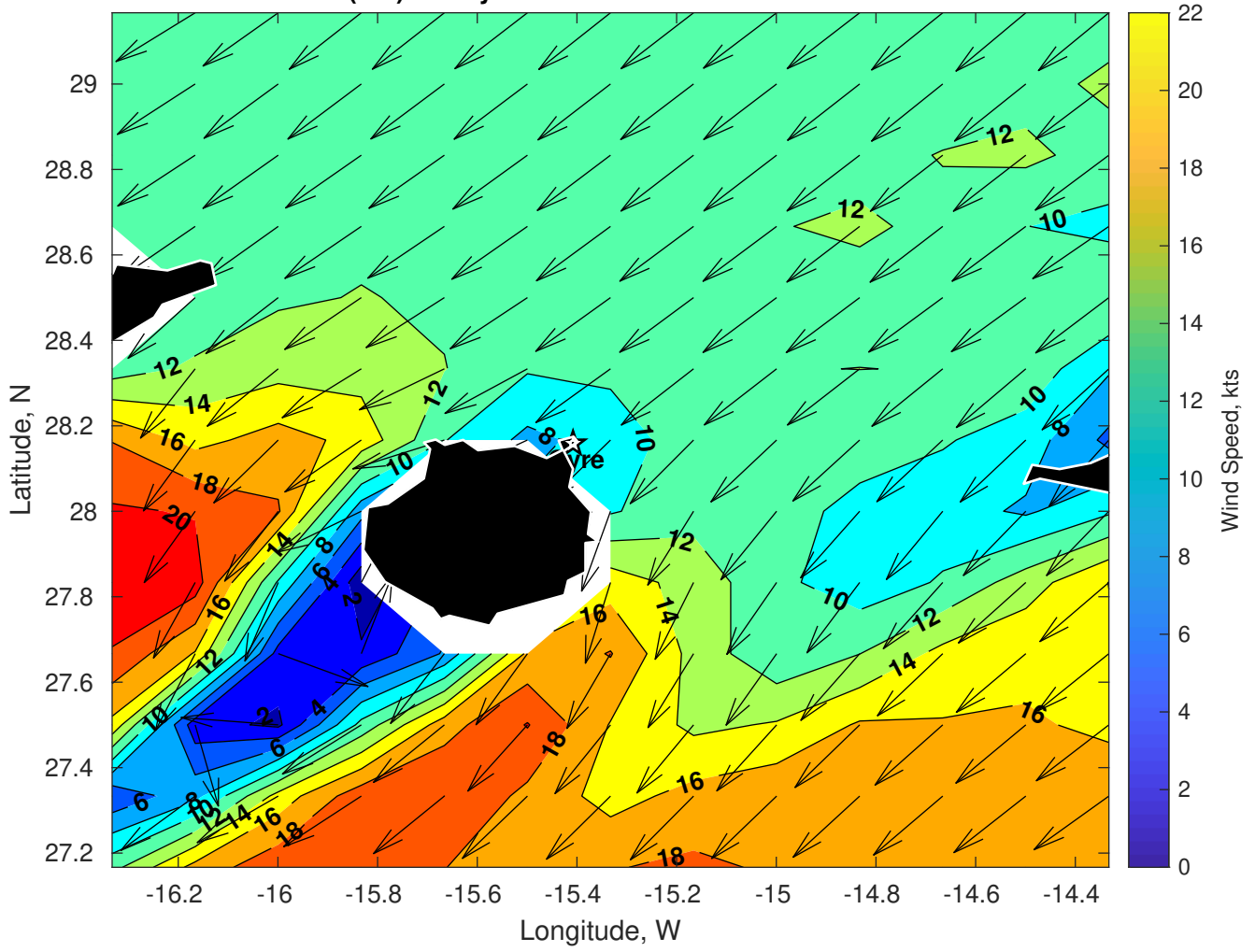
Wave Height (ft) for Gyre at 13-Feb-2025 09:00:00



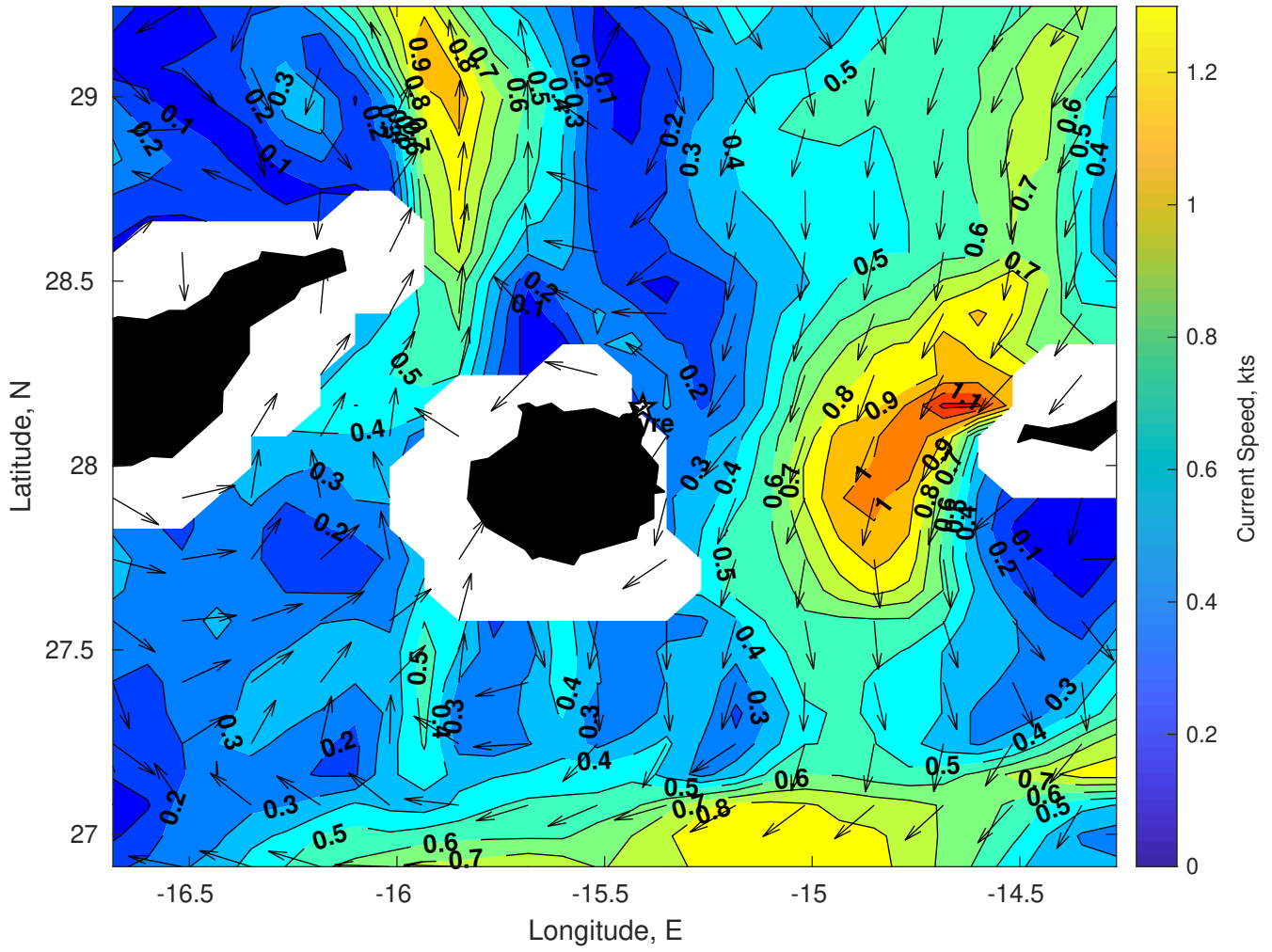
Wave Period (sec) for Gyre at 13-Feb-2025 09:00:00



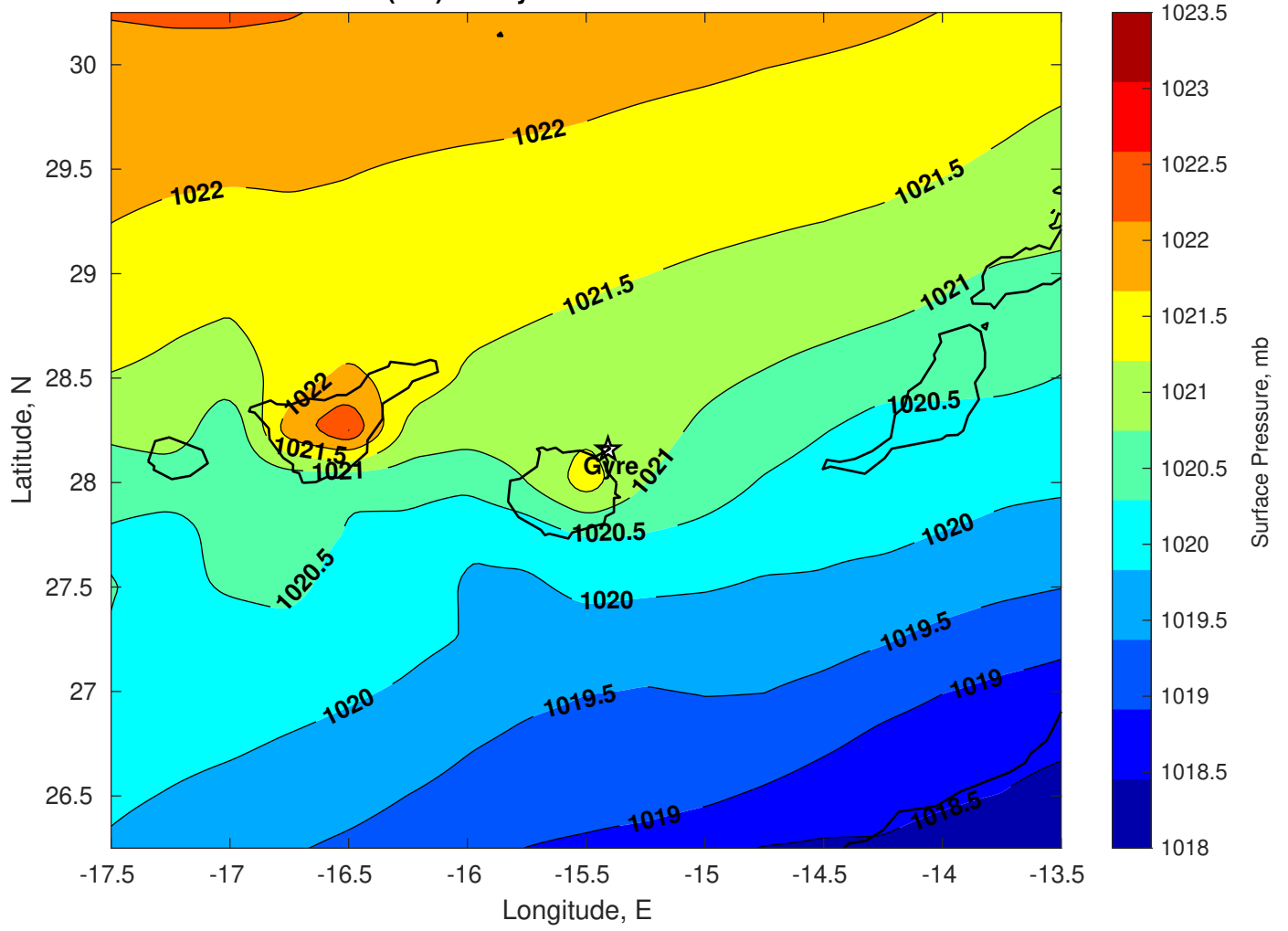
**Winds (kts) for Gyre at 13-Feb-2025 09:00:00**



Surface Currents for Gyre at 12-Feb-2025 00:00:00

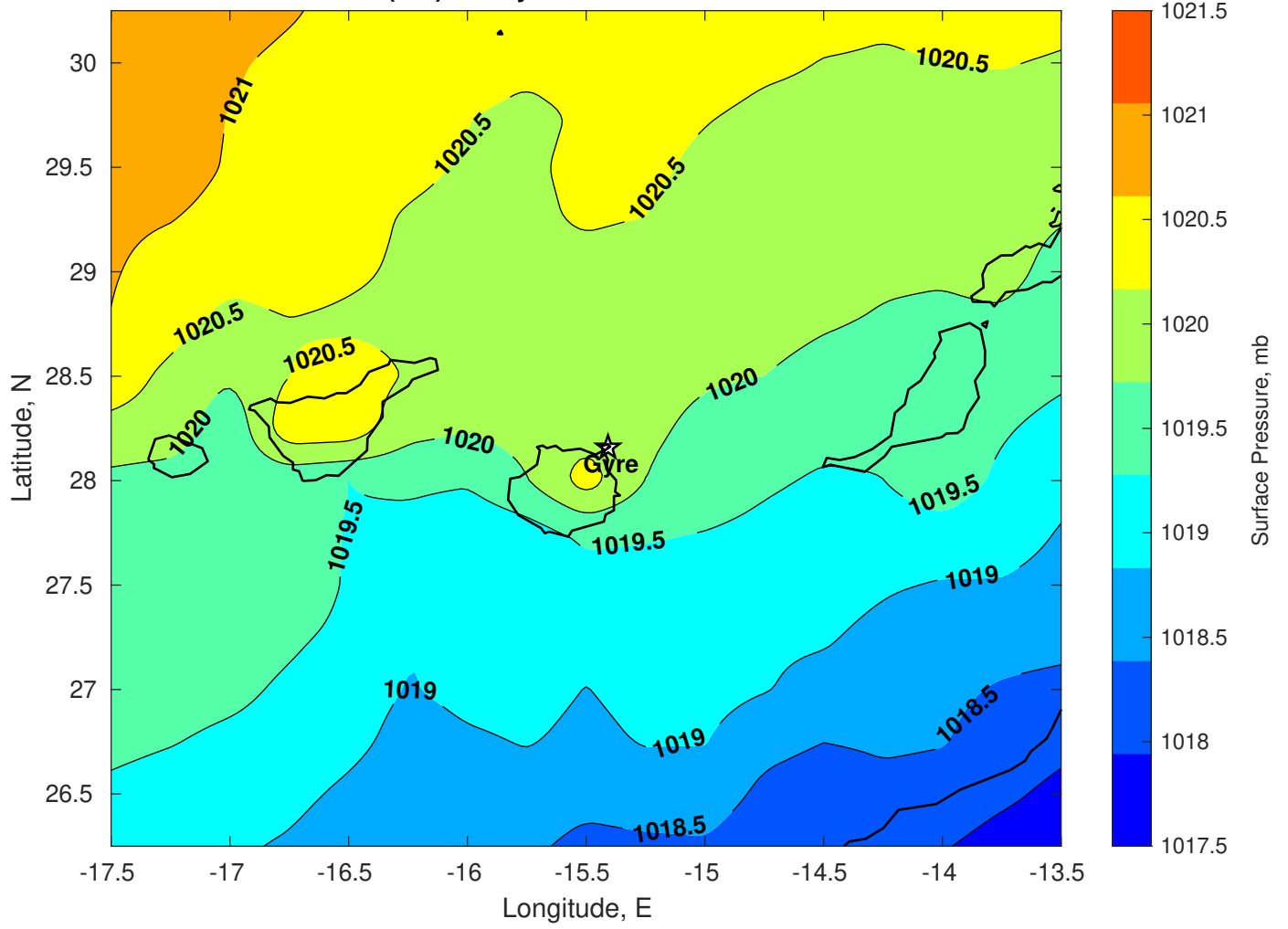


Surface Pressure (mb) for Gyre at 13-Feb-2025 00:00:00

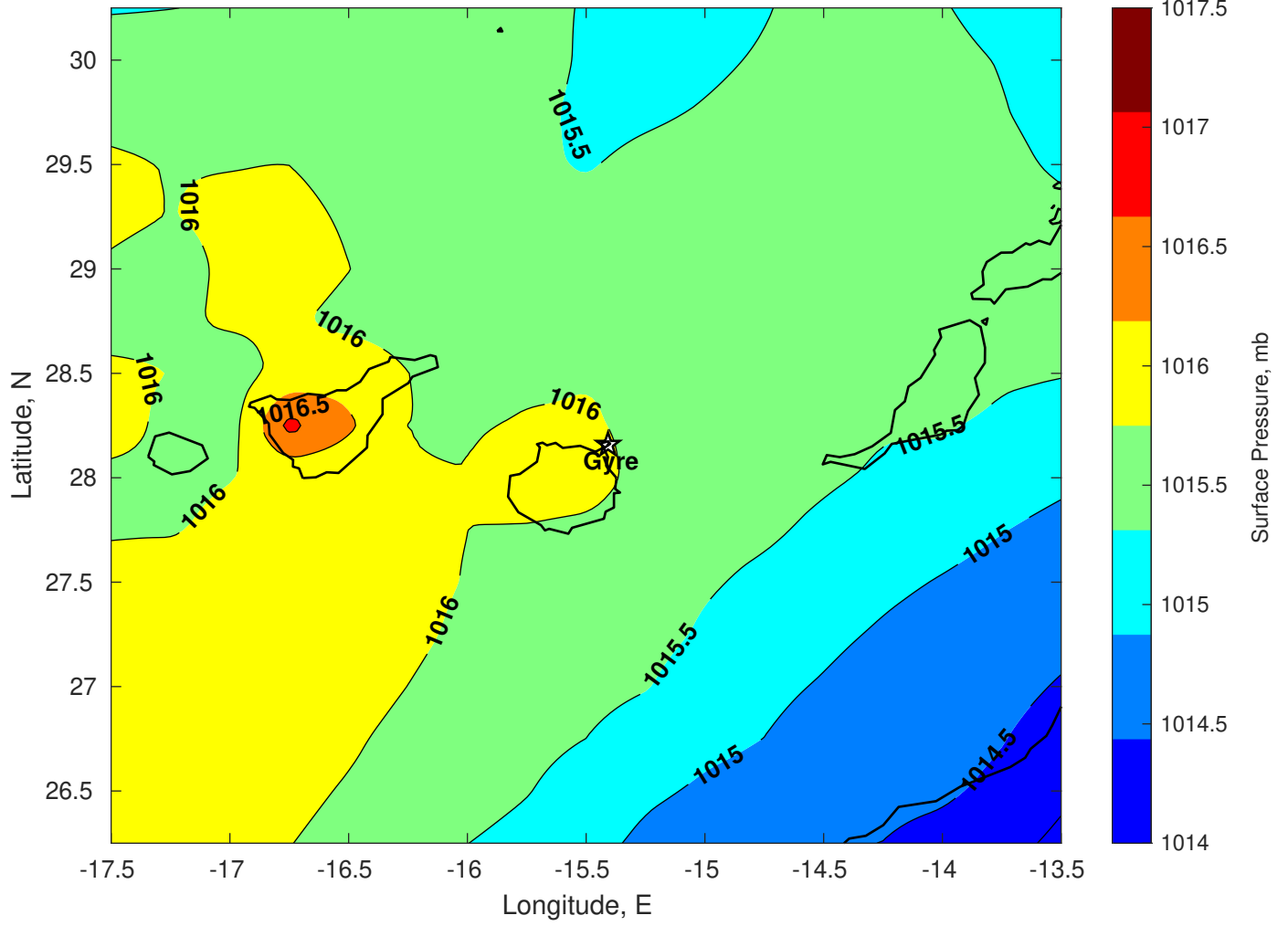




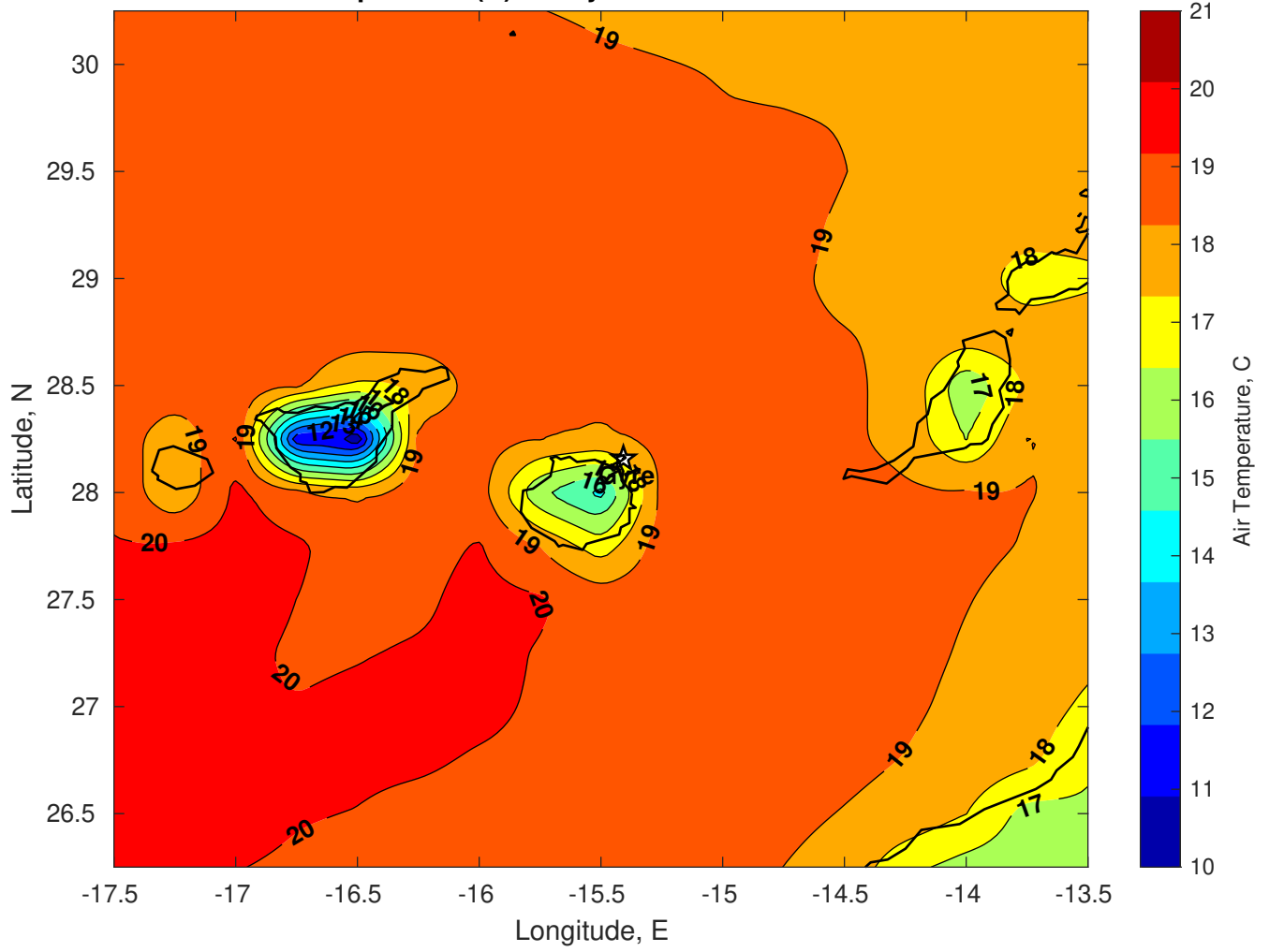
Surface Pressure (mb) for Gyre at 14-Feb-2025 00:00:00



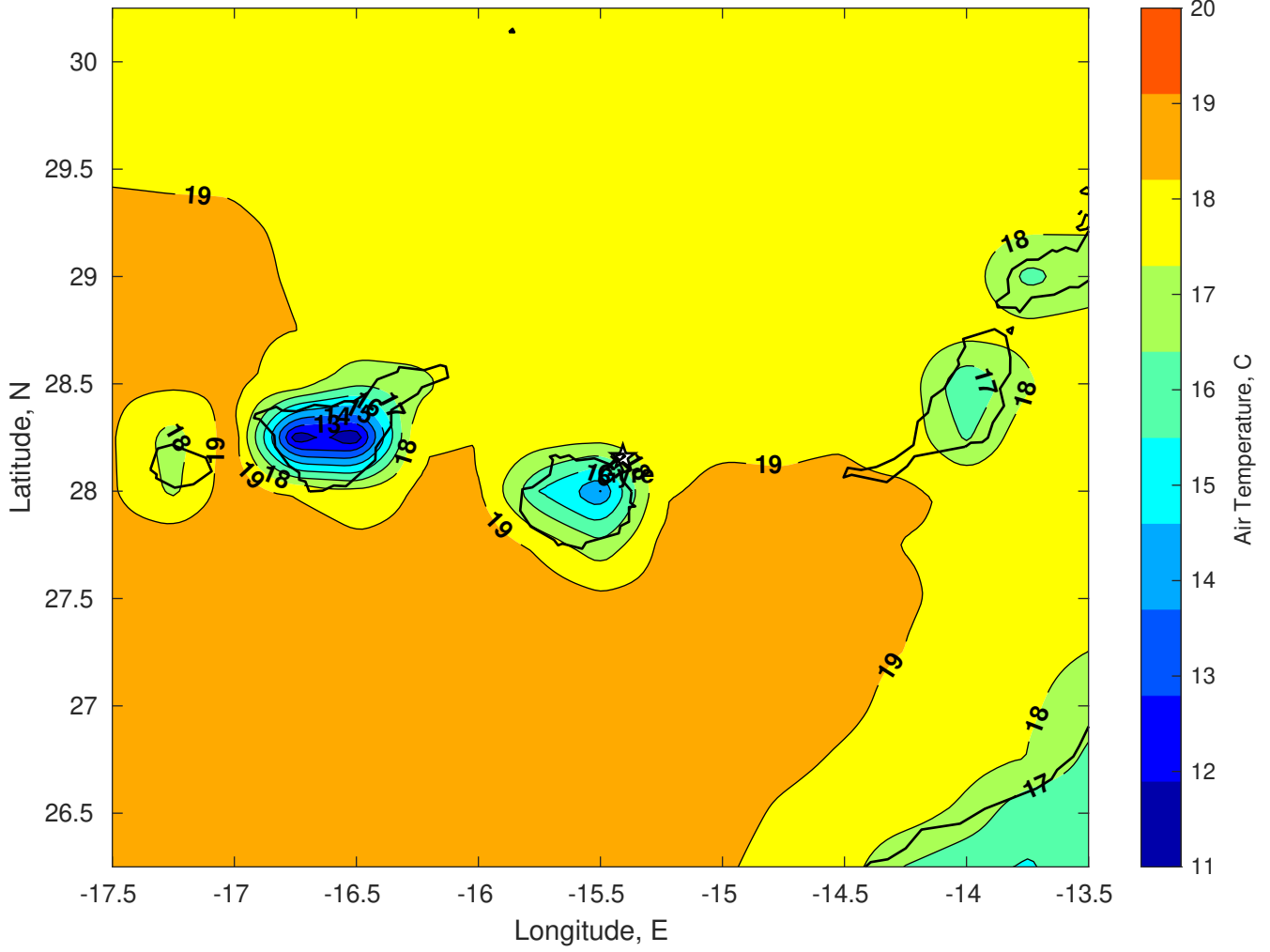
Surface Pressure (mb) for Gyre at 15-Feb-2025 00:00:00



Air Temperature (C) for Gyre at 13-Feb-2025



Air Temperature (C) for Gyre at 13-Feb-2025



Air Temperature (C) for Gyre at 13-Feb-2025

