

\*\*\*\*\*

Marine Weather Forecast for Shell Noches GC19 PPL Geotechnical  
Forecast valid as of 13-Feb-2025 0900 GMT

\*\*\*\*\*

All times are local.

Today

Winds: N, 10-15 kts.  
Waves: N, 6-7 feet, 7-8 sec.  
No currents available.

Tonight

Winds: E, 20-25 kts.  
Waves: NE, 6-7 feet, 7-8 sec.  
No currents available.

Thursday

Winds: NE, 20-25 kts.  
Waves: NE, 6-7 feet, 7-8 sec.  
No currents available.

Friday Night

Winds: NE, 15-20 kts.  
Waves: NE, 5-6 feet, 6-7 sec.  
No currents available.

Friday

Winds: E, 20-25 kts.  
Waves: E, 6-7 feet, 7-8 sec.  
No currents available.

Saturday Night

Winds: N, 15-20 kts.  
Waves: NE, 6-7 feet, 6-7 sec.  
No currents available.

Saturday

Winds: NE, 20-25 kts.  
Waves: NE, 6-7 feet, 6-7 sec.  
No currents available.

Sunday Night

Winds: NE, 20-25 kts.  
Waves: NE, 5-6 feet, 7-8 sec.  
No currents available.

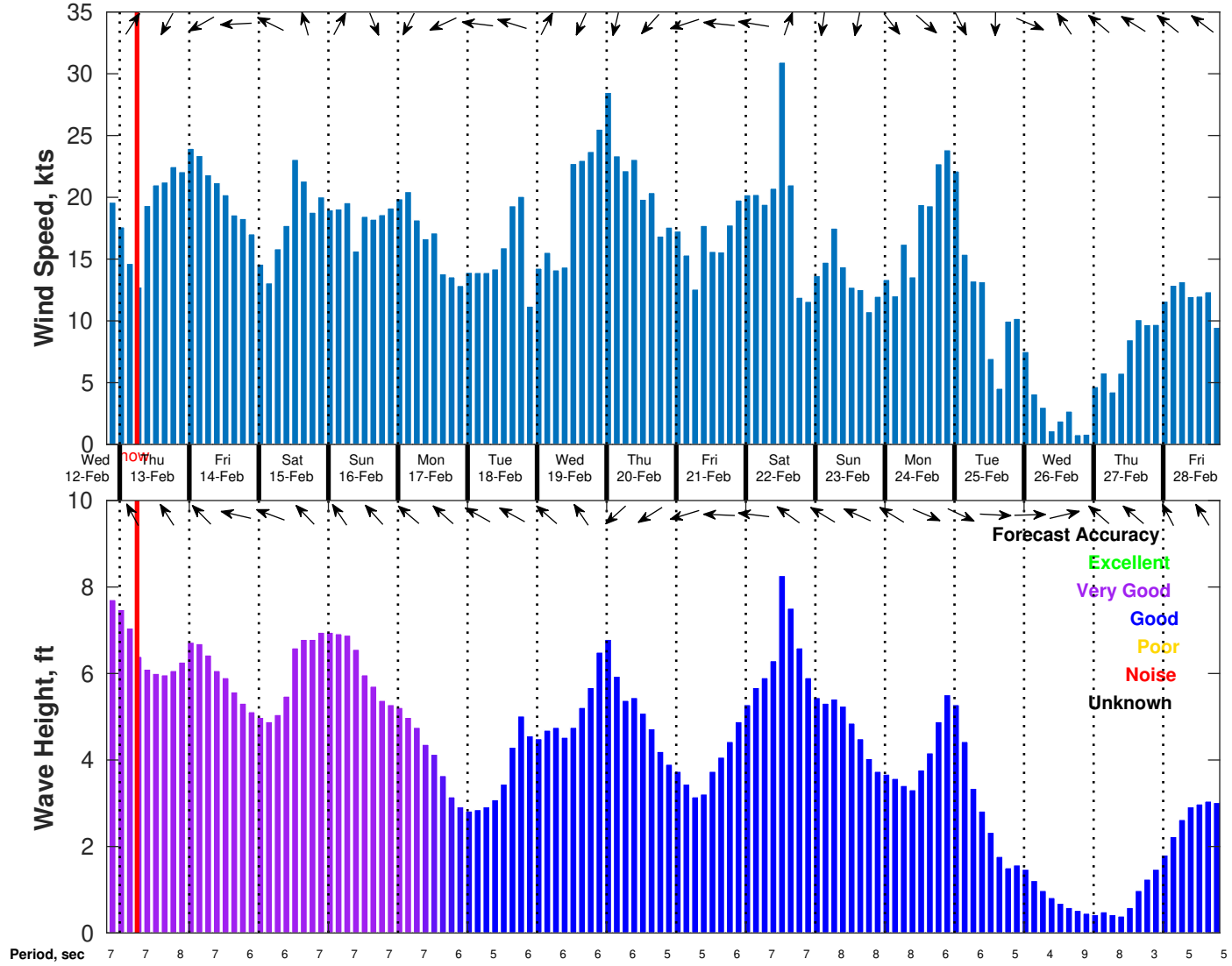
Sunday

Winds: N, 15-20 kts.  
Waves: NE, 6-7 feet, 7-8 sec.  
No currents available.

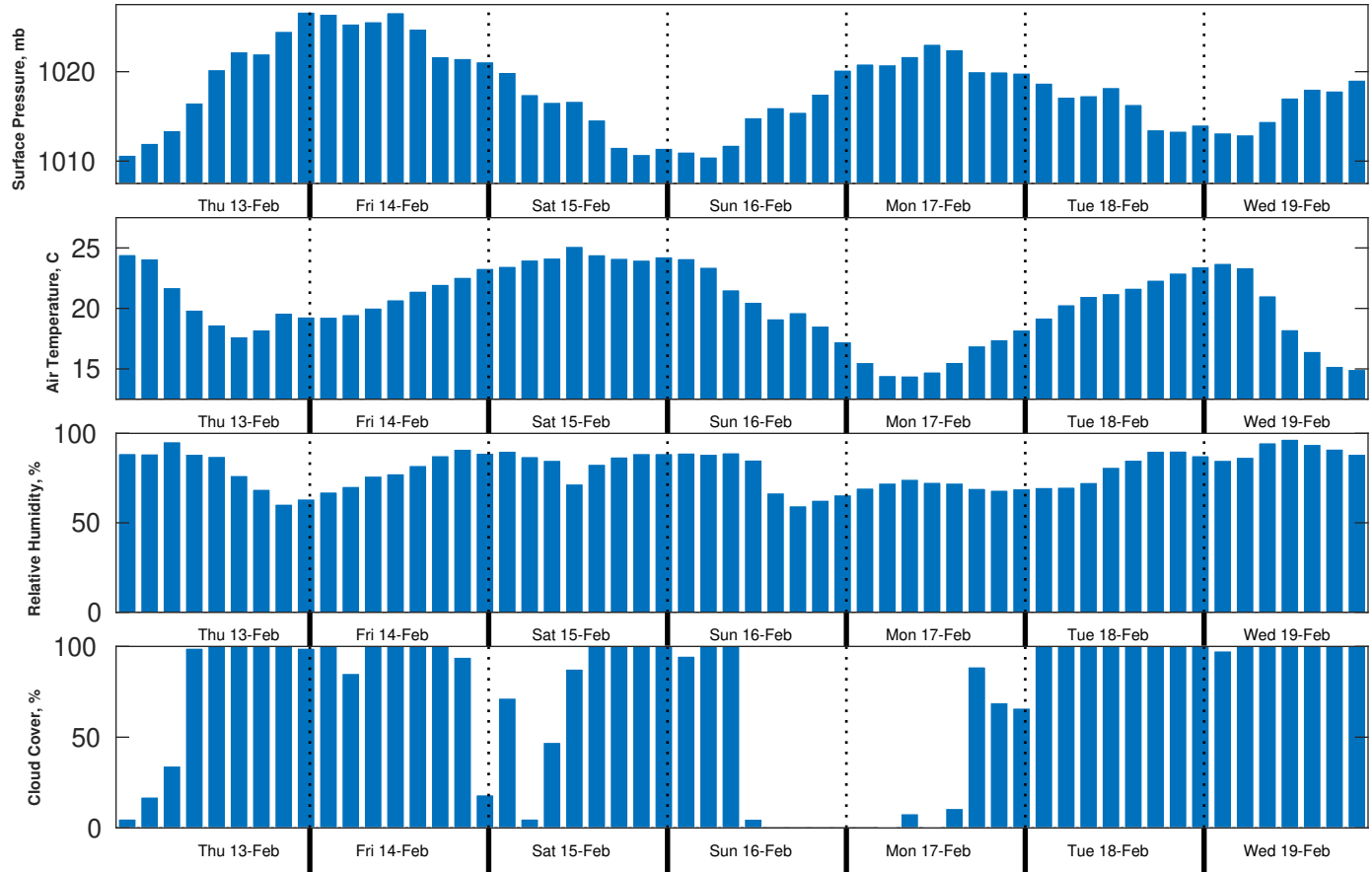
Monday Night

Winds: E, 10-15 kts.  
Waves: NE, 2-3 feet, 6-7 sec.  
No currents available.

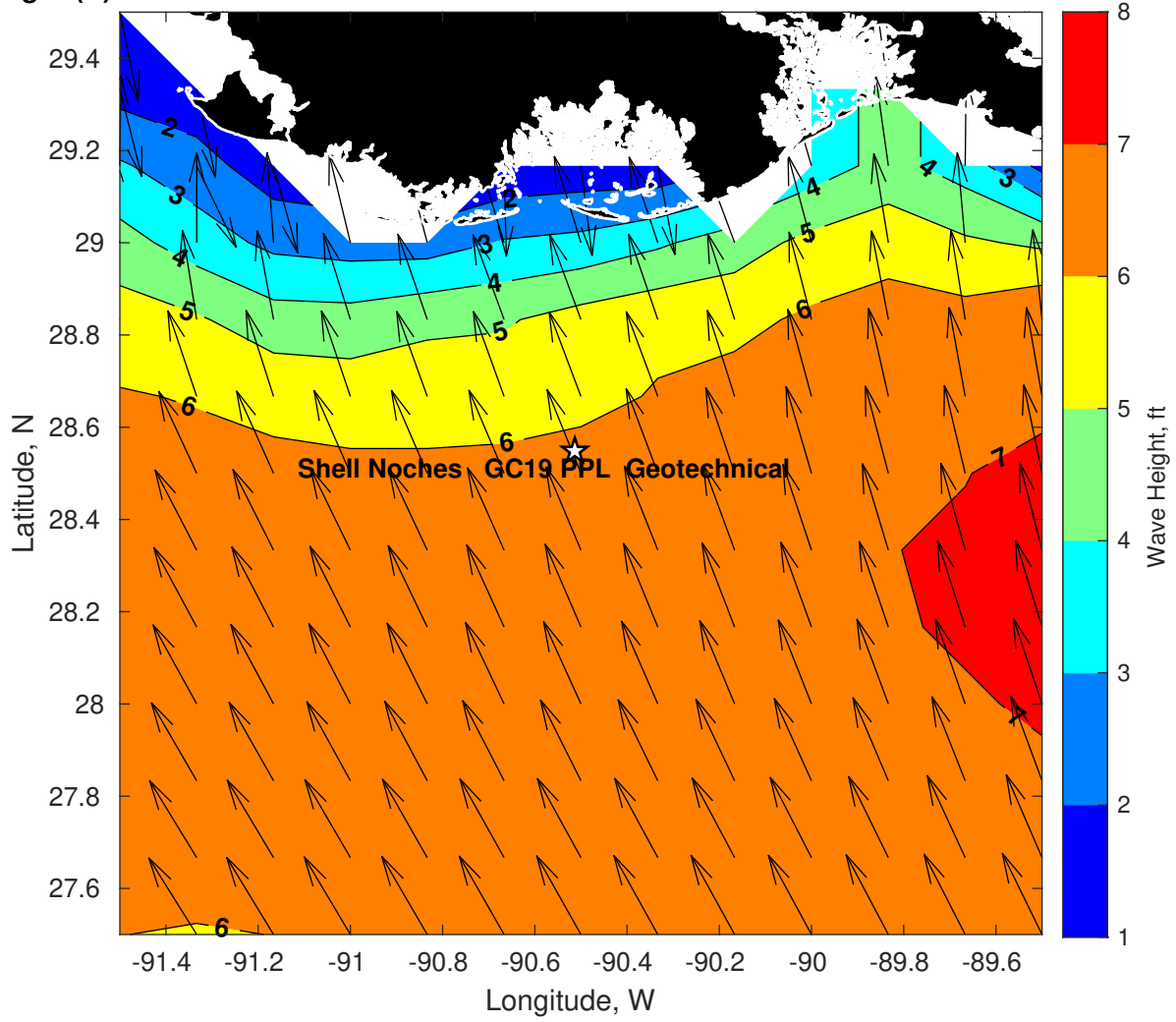
**Wind & Wave Forecast for Shell Noches GC19 PPL Geotechnical from 12-Feb-2025 20:00:00 to 28-Feb-2025 20:00:00**



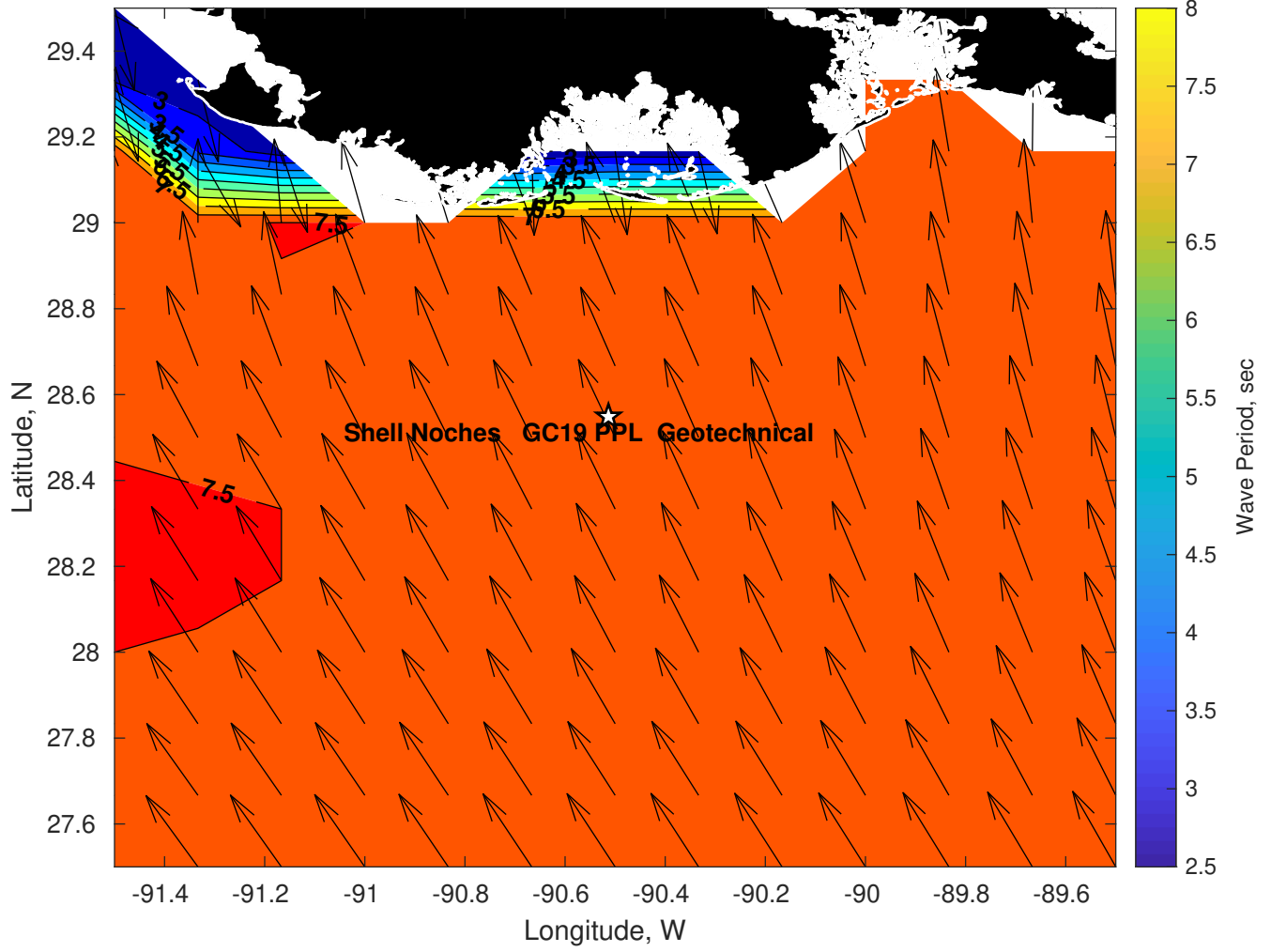
**Met Forecast for Shell Noches GC19 PPL Geotechnical from 13-Feb-2025 00:00:00 to 20-Feb-2025 00:00:00**



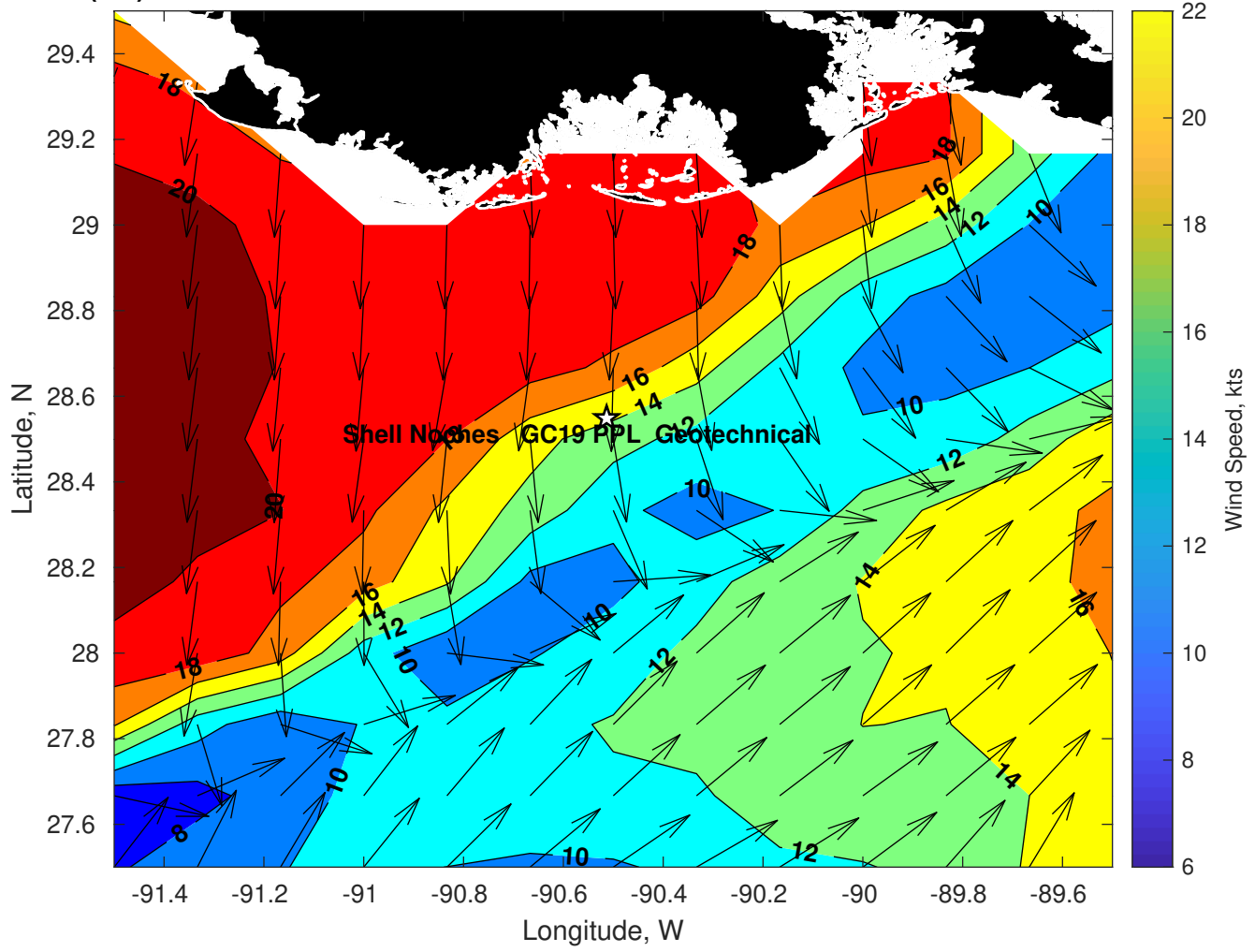
Wave Height (ft) for Shell Noches GC19 PPL Geotechnical at 13-Feb-2025 09:00:00



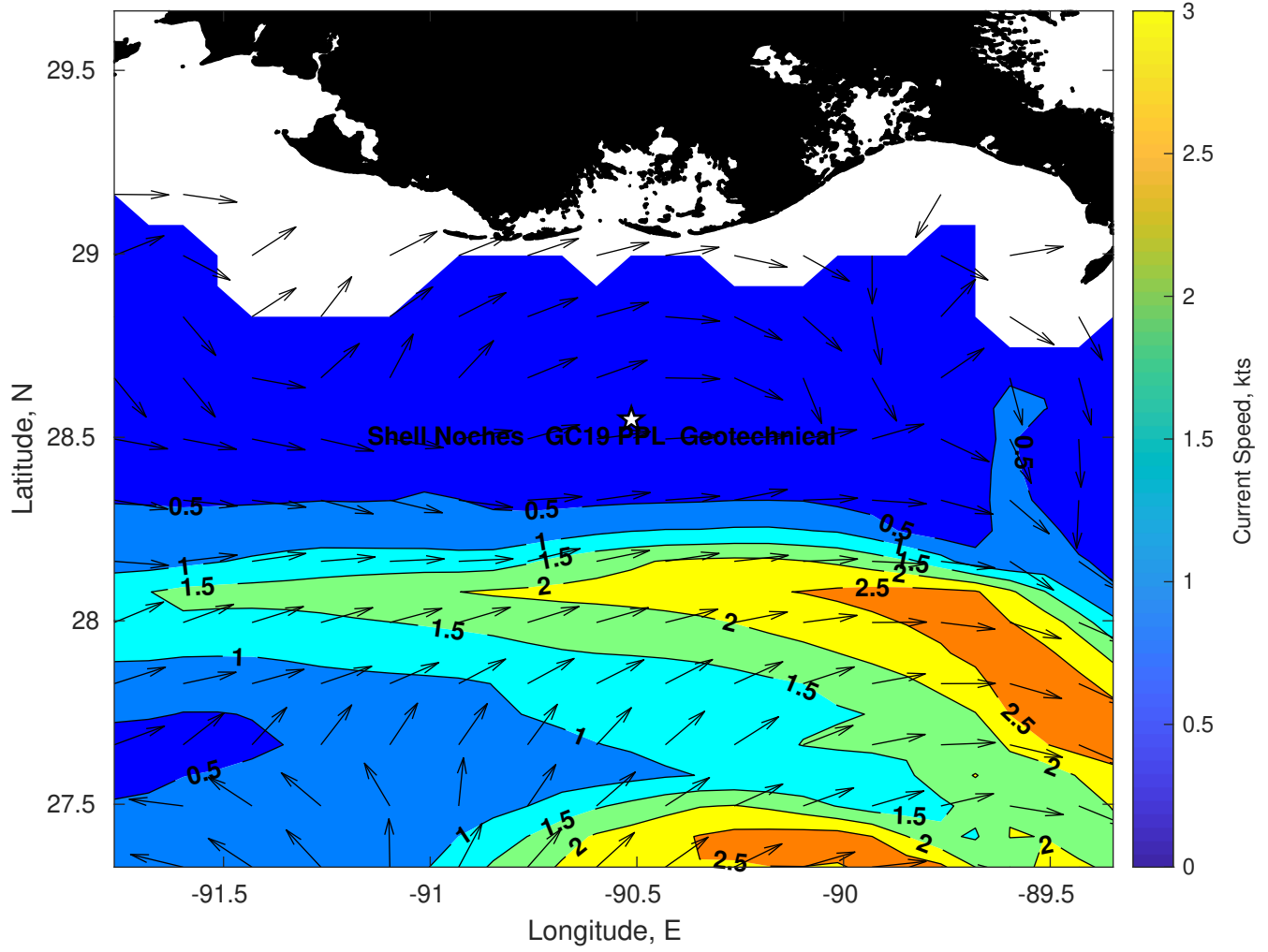
Wave Period (sec) for Shell Noches GC19 PPL Geotechnical at 13-Feb-2025 09:00:00



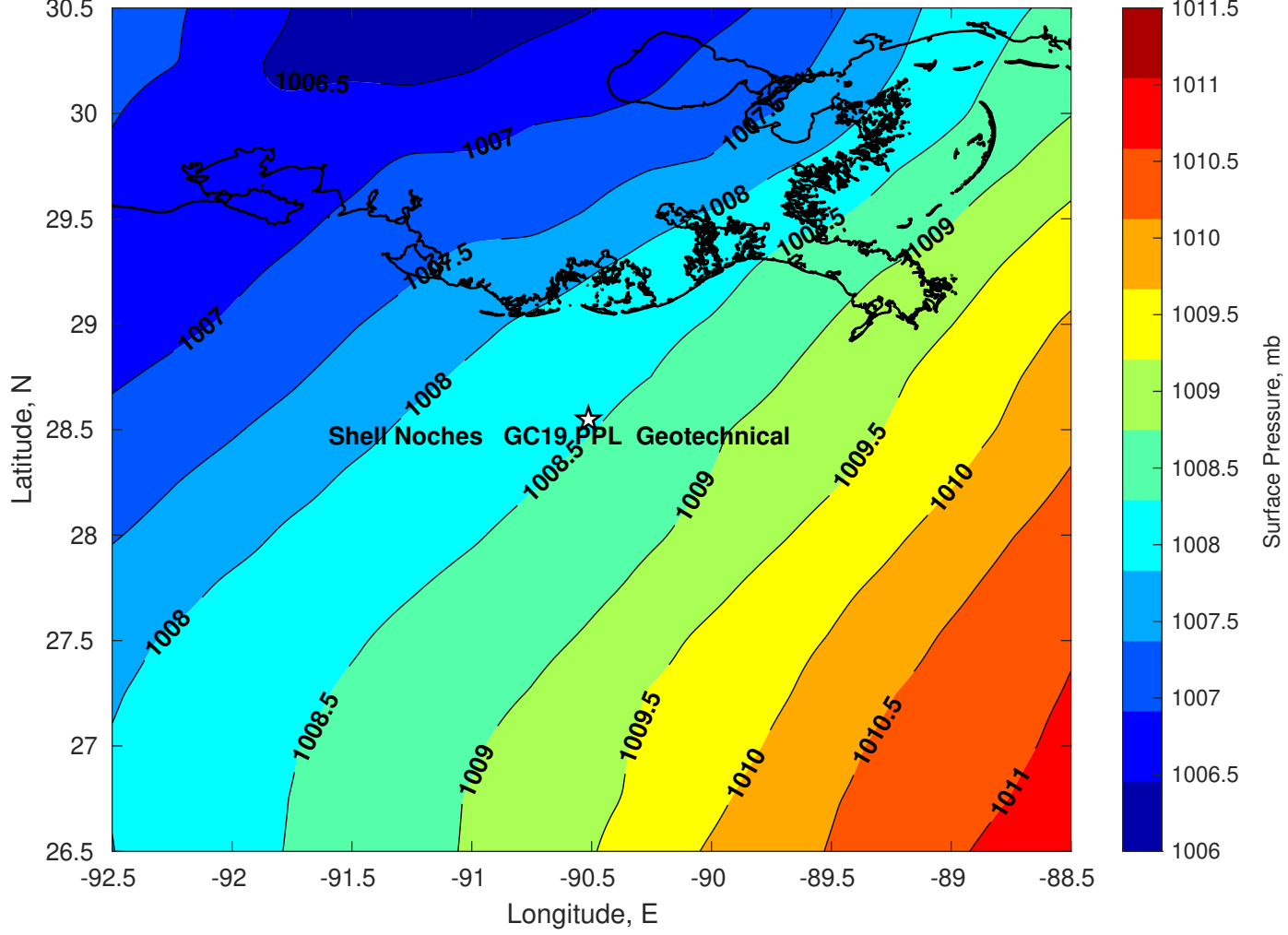
Winds (kts) for Shell Noches GC19 PPL Geotechnical at 13-Feb-2025 09:00:00



Surface Currents for Shell Noches GC19 PPL Geotechnical at 12-Feb-2025 00:00:00

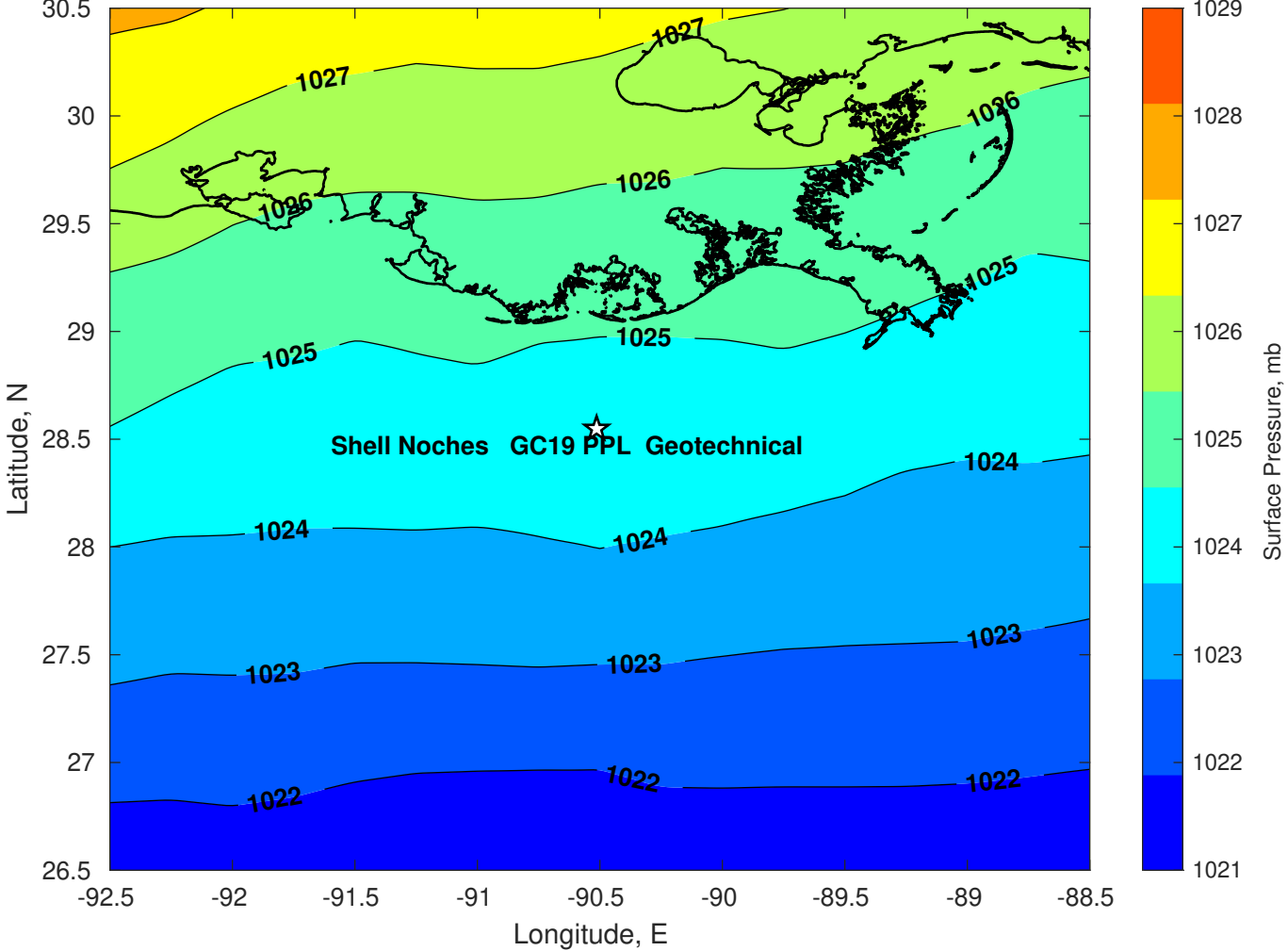


Surface Pressure (mb) for Shell Noches GC19 PPL Geotechnical at 13-Feb-2025 00:00:00

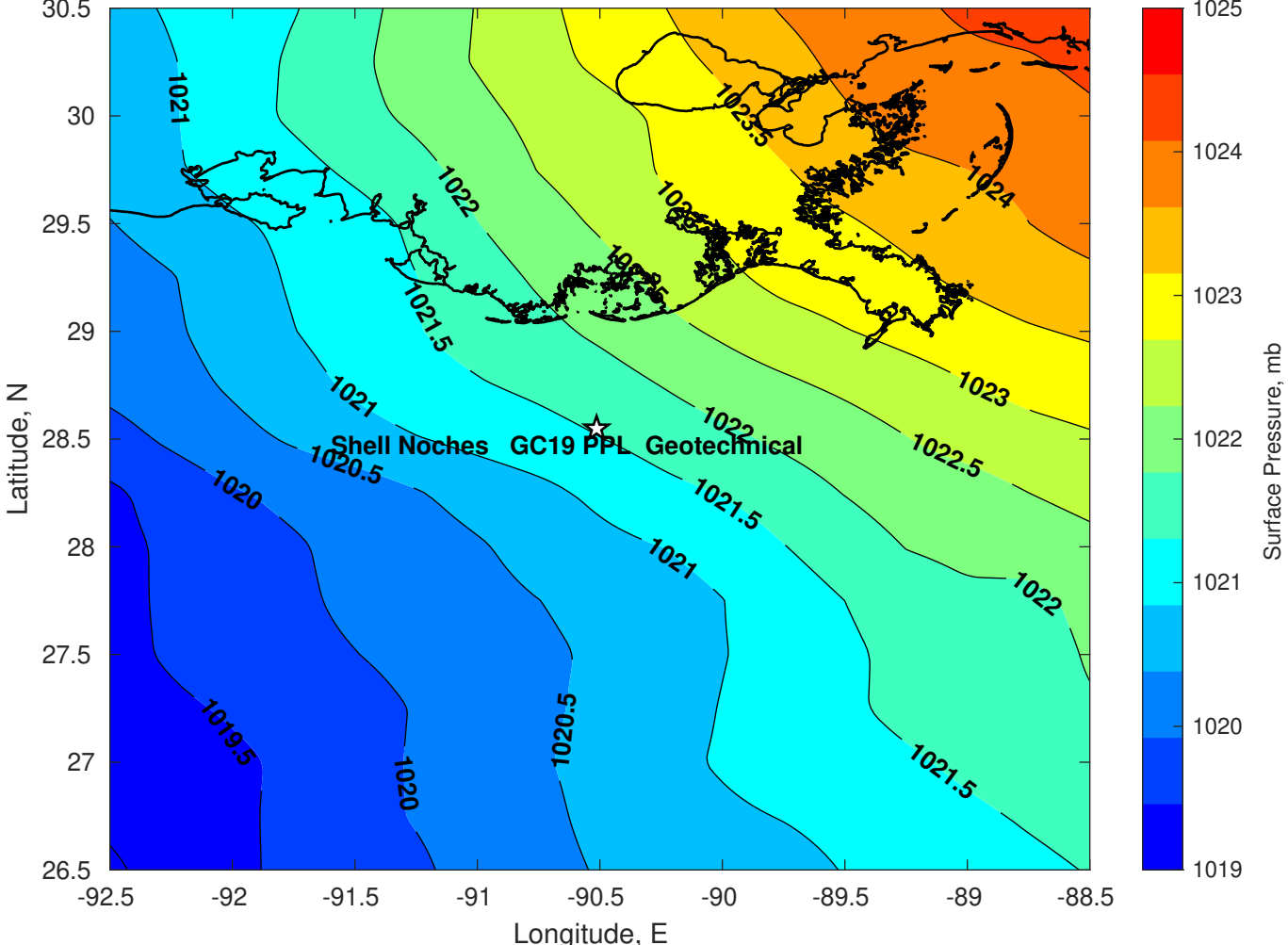




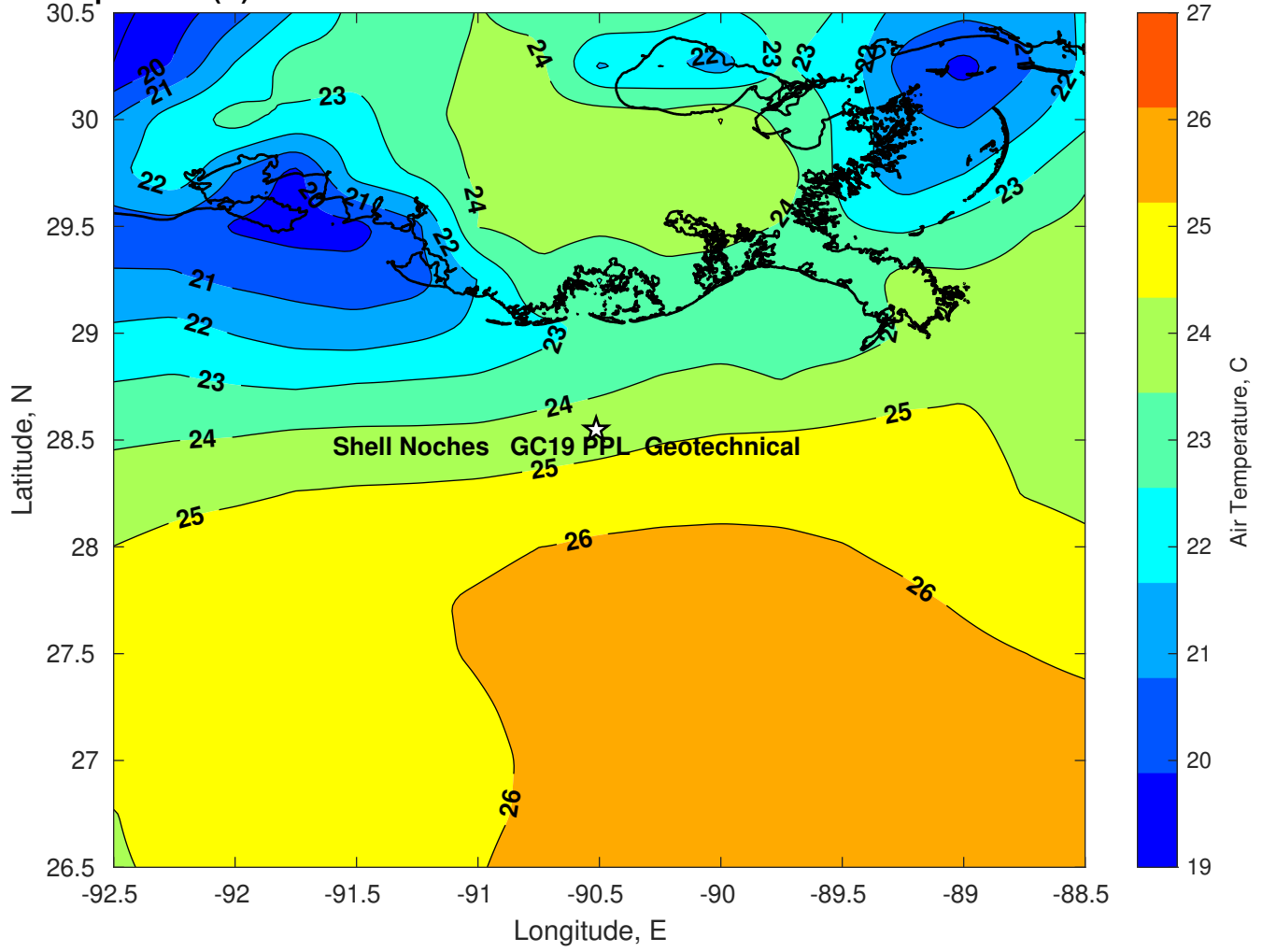
Surface Pressure (mb) for Shell Noches GC19 PPL Geotechnical at 14-Feb-2025 00:00:00



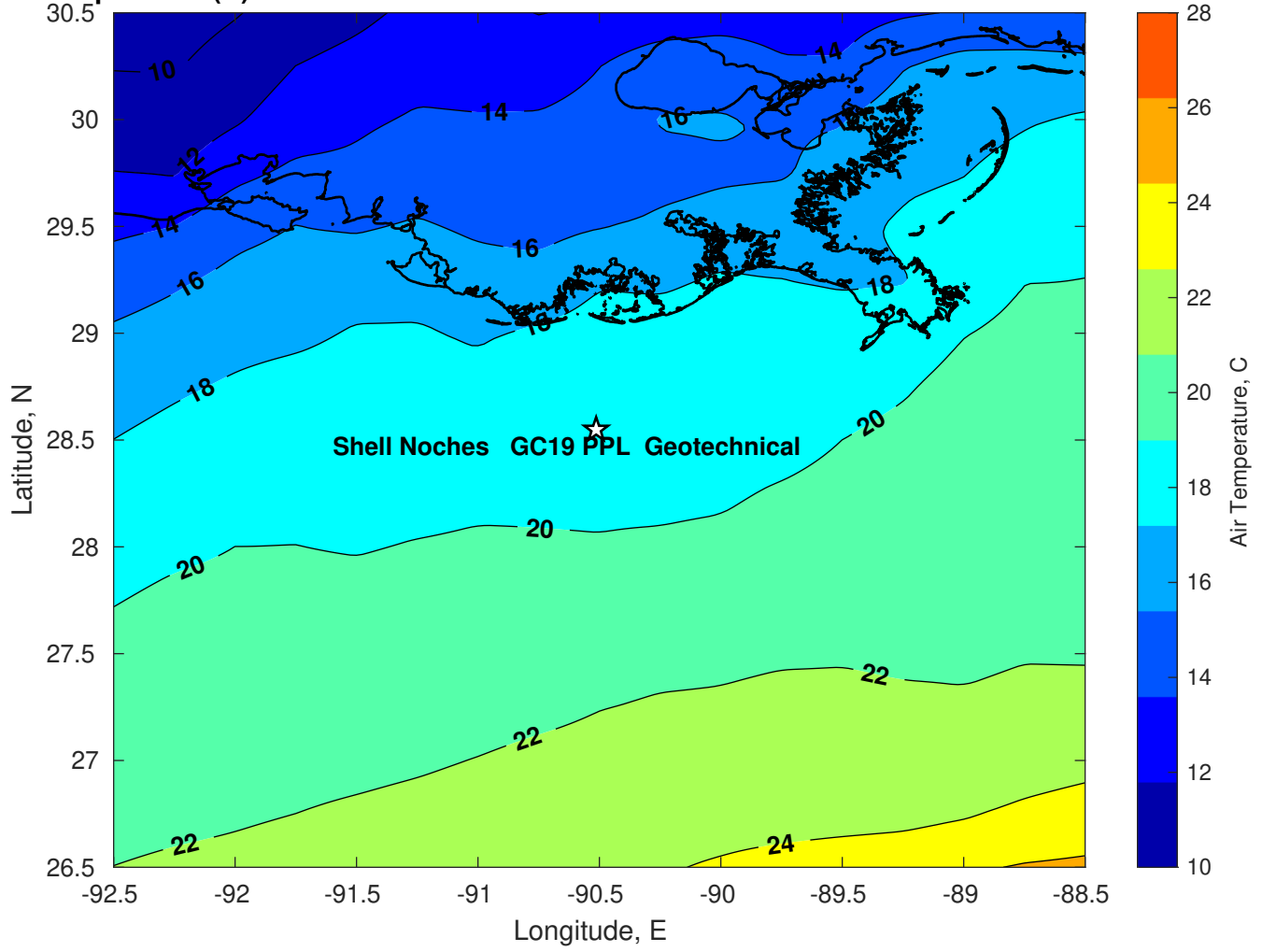
Surface Pressure (mb) for Shell Noches GC19 PPL Geotechnical at 15-Feb-2025 00:00:00



**Air Temperature (C) for Shell Noches GC19 PPL Geotechnical at 13-Feb-2025**



**Air Temperature (C) for Shell Noches GC19 PPL Geotechnical at 13-Feb-2025**



Air Temperature (C) for Shell Noches GC19 PPL Geotechnical at 13-Feb-2025

