
Marine Weather Forecast for Nautilus
Forecast valid as of 14-Feb-2025 0900 GMT

All times are local.

Today

Winds: NE, 25-30 kts.
Waves: N, 11-12 feet, 13-14 sec.
No currents available.

Tonight

Winds: NE, 25-30 kts.
Waves: NW, 11-12 feet, 13-14 sec.
No currents available.

Saturday

Winds: NE, 25-30 kts.
Waves: NW, 10-11 feet, 13-14 sec.
No currents available.

Saturday Night

Winds: NE, 25-30 kts.
Waves: NW, 10-11 feet, 11-12 sec.
No currents available.

Sunday

Winds: NE, 25-30 kts.
Waves: N, 10-11 feet, 8-9 sec.
No currents available.

Sunday Night

Winds: NE, 25-30 kts.
Waves: NW, 10-11 feet, 16-17 sec.
No currents available.

Monday

Winds: NE, 25-30 kts.
Waves: NW, 10-11 feet, 15-16 sec.
No currents available.

Monday Night

Winds: NE, 20-25 kts.
Waves: NW, 10-11 feet, 14-15 sec.
No currents available.

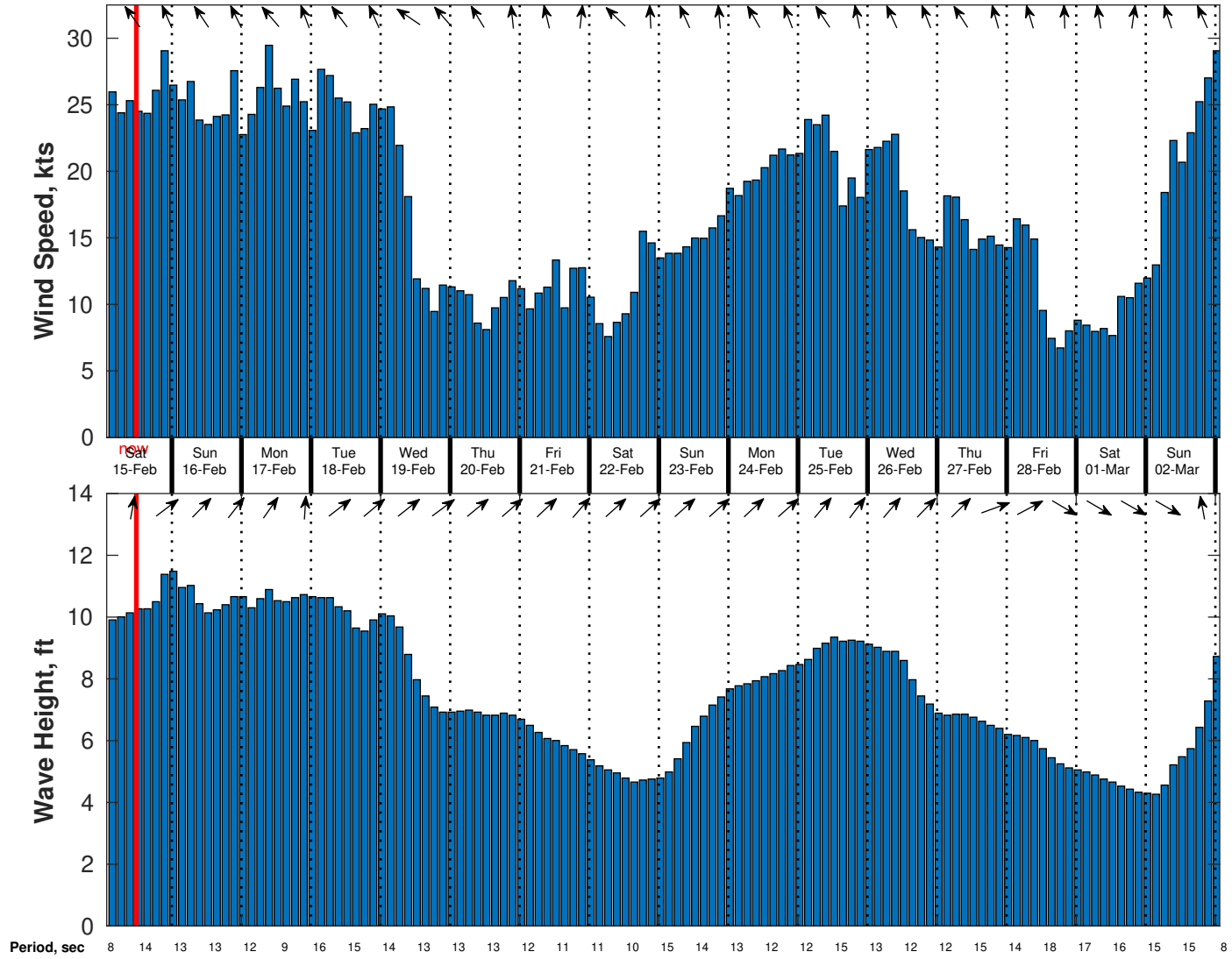
Tuesday

Winds: NE, 15-20 kts.
Waves: NW, 8-9 feet, 13-14 sec.
No currents available.

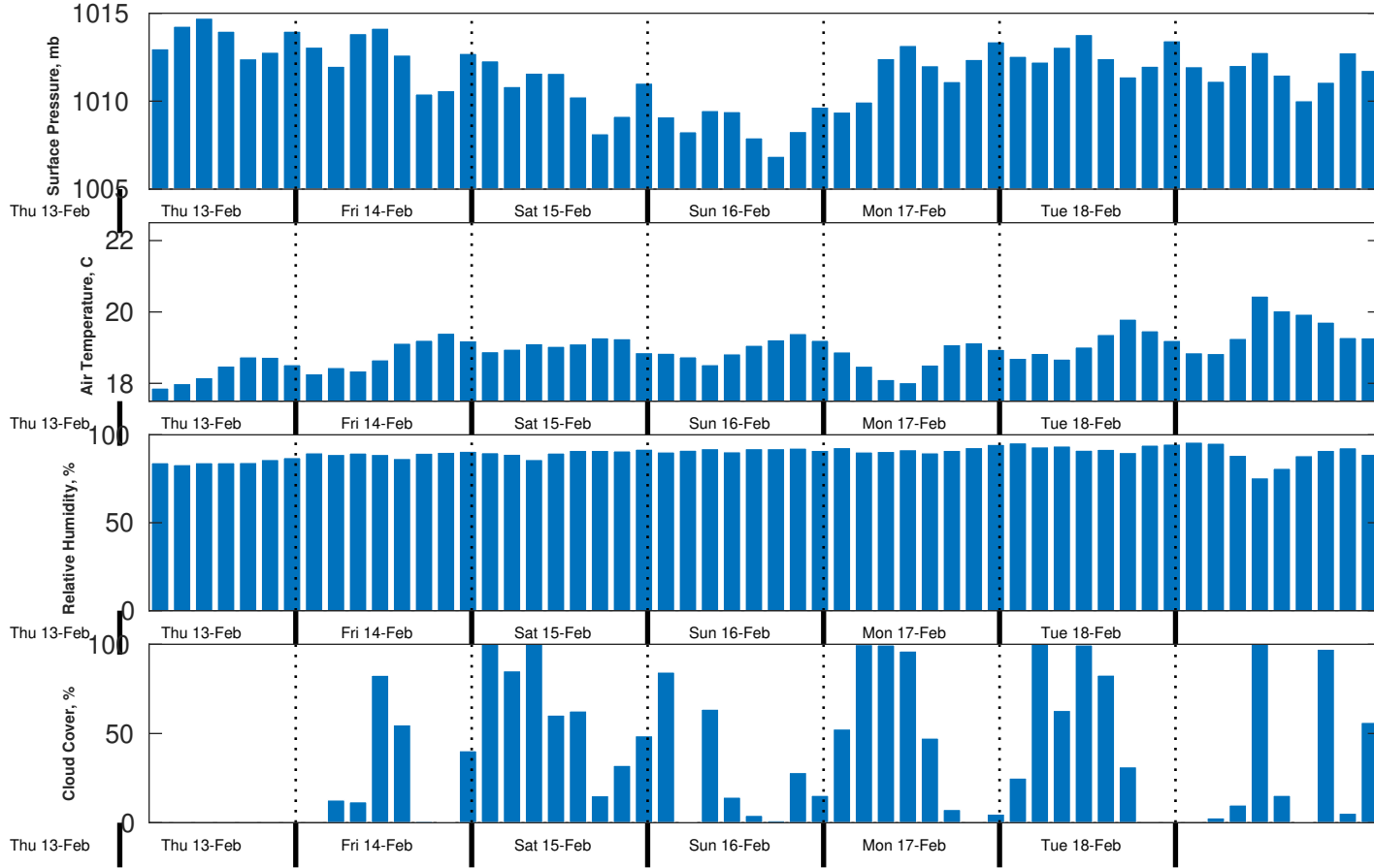
Tuesday Night

Winds: NE, 10-15 kts.
Waves: NW, 6-7 feet, 13-14 sec.
No currents available.

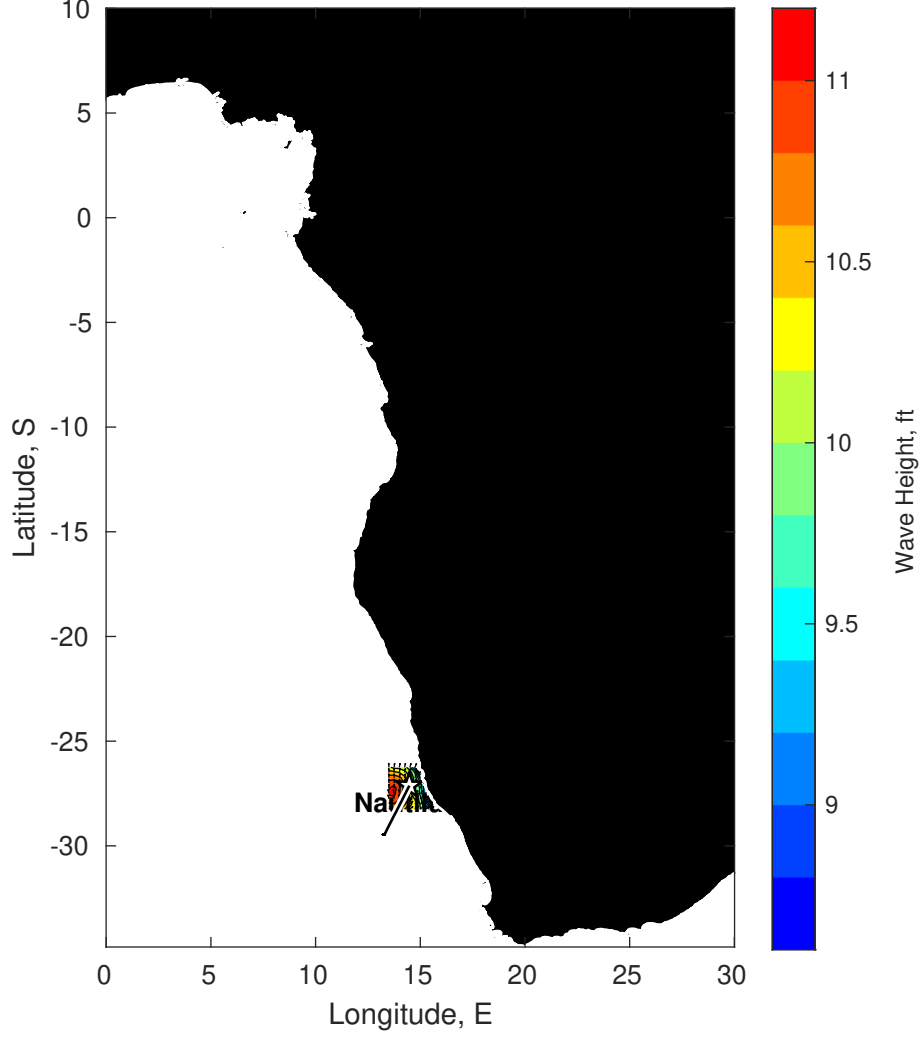
Wind & Wave Forecast for Nautilus from 14-Feb-2025 02:00:00 to 02-Mar-2025 02:00:00



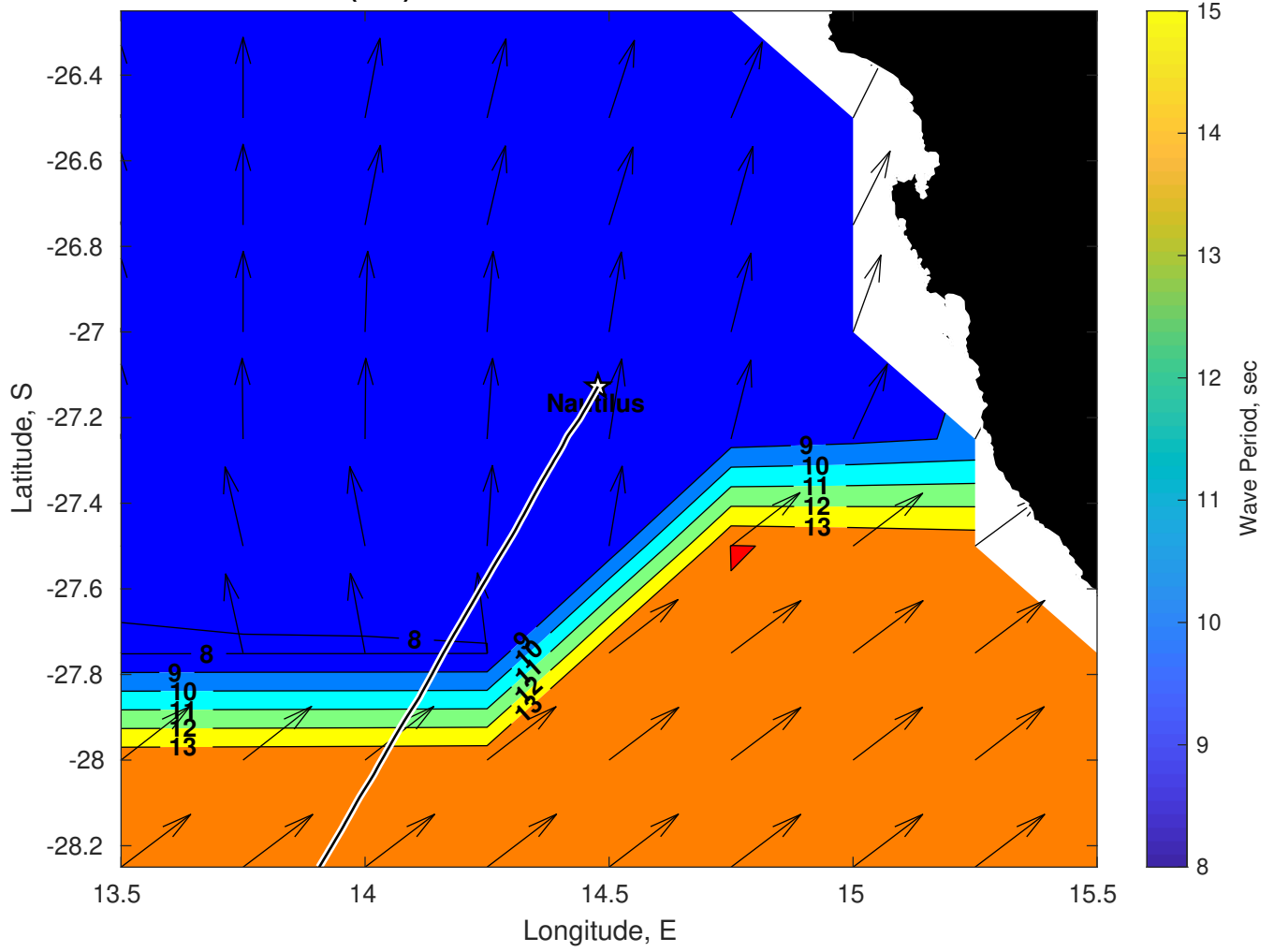
Met Forecast for Nautilus from 14-Feb-2025 00:00:00 to 21-Feb-2025 00:00:00



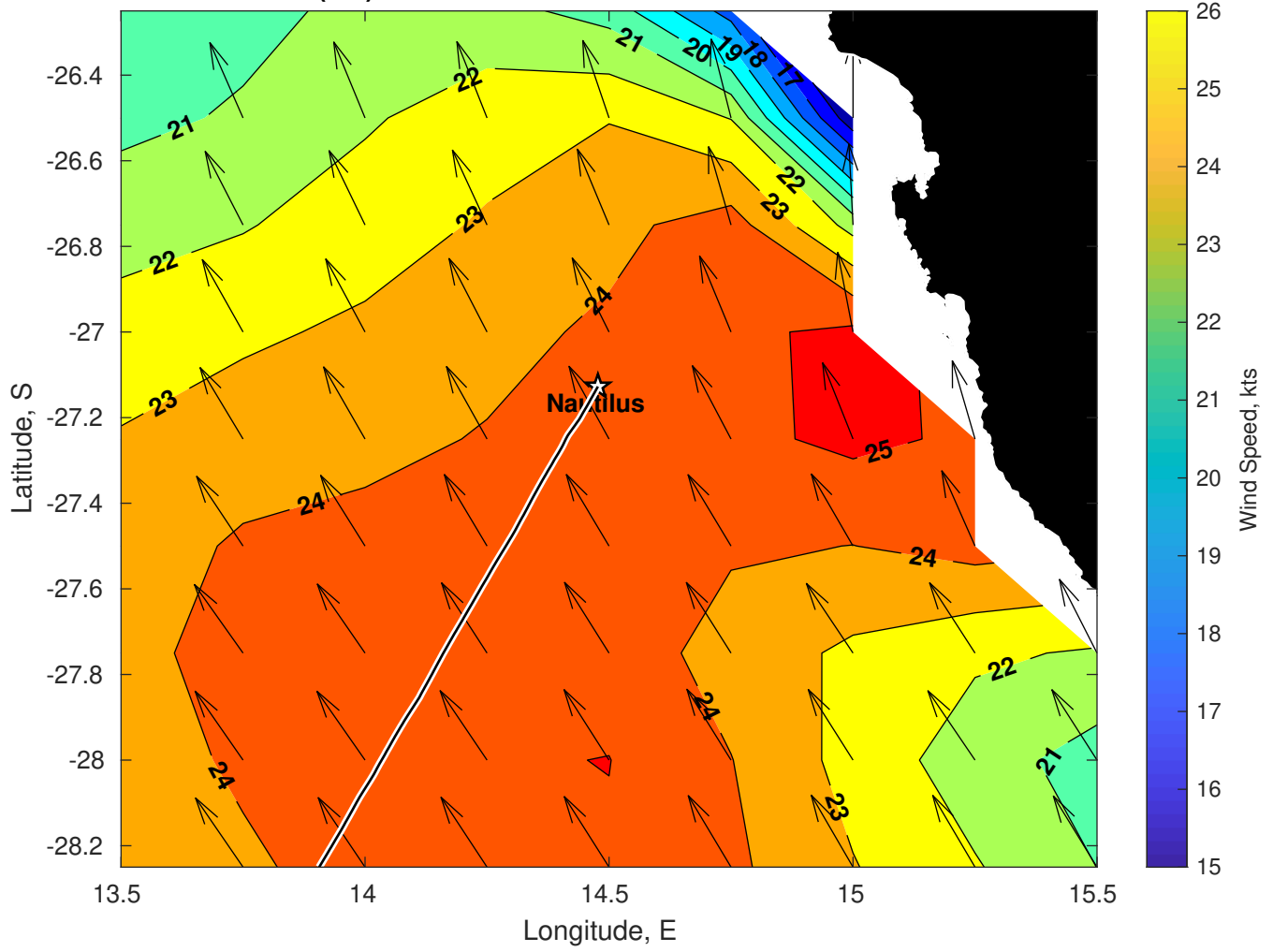
Wave Height (ft) for Nautilus at 14-Feb-2025 09:00:00



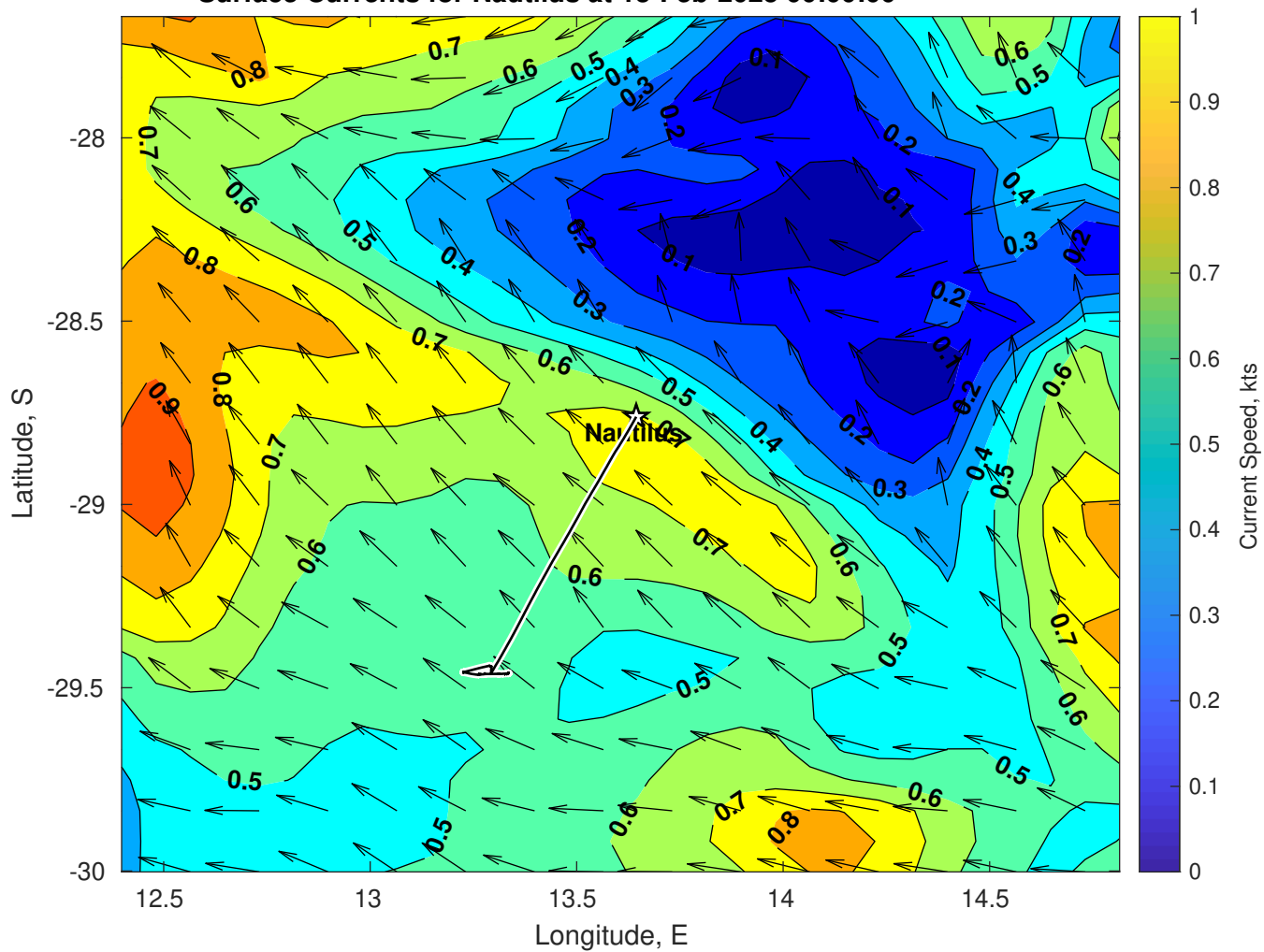
Wave Period (sec) for Nautilus at 14-Feb-2025 09:00:00



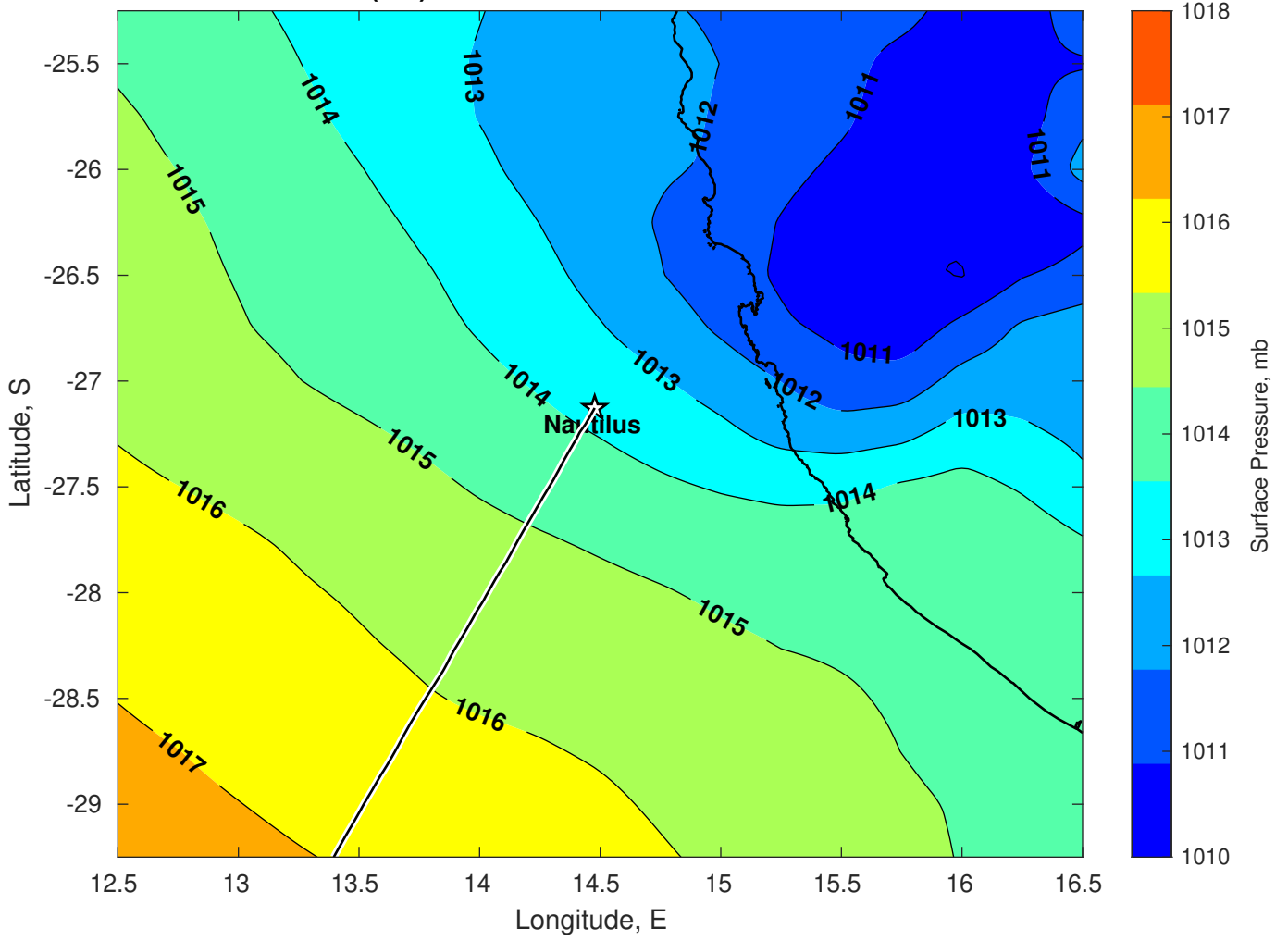
Winds (kts) for Nautilus at 14-Feb-2025 09:00:00



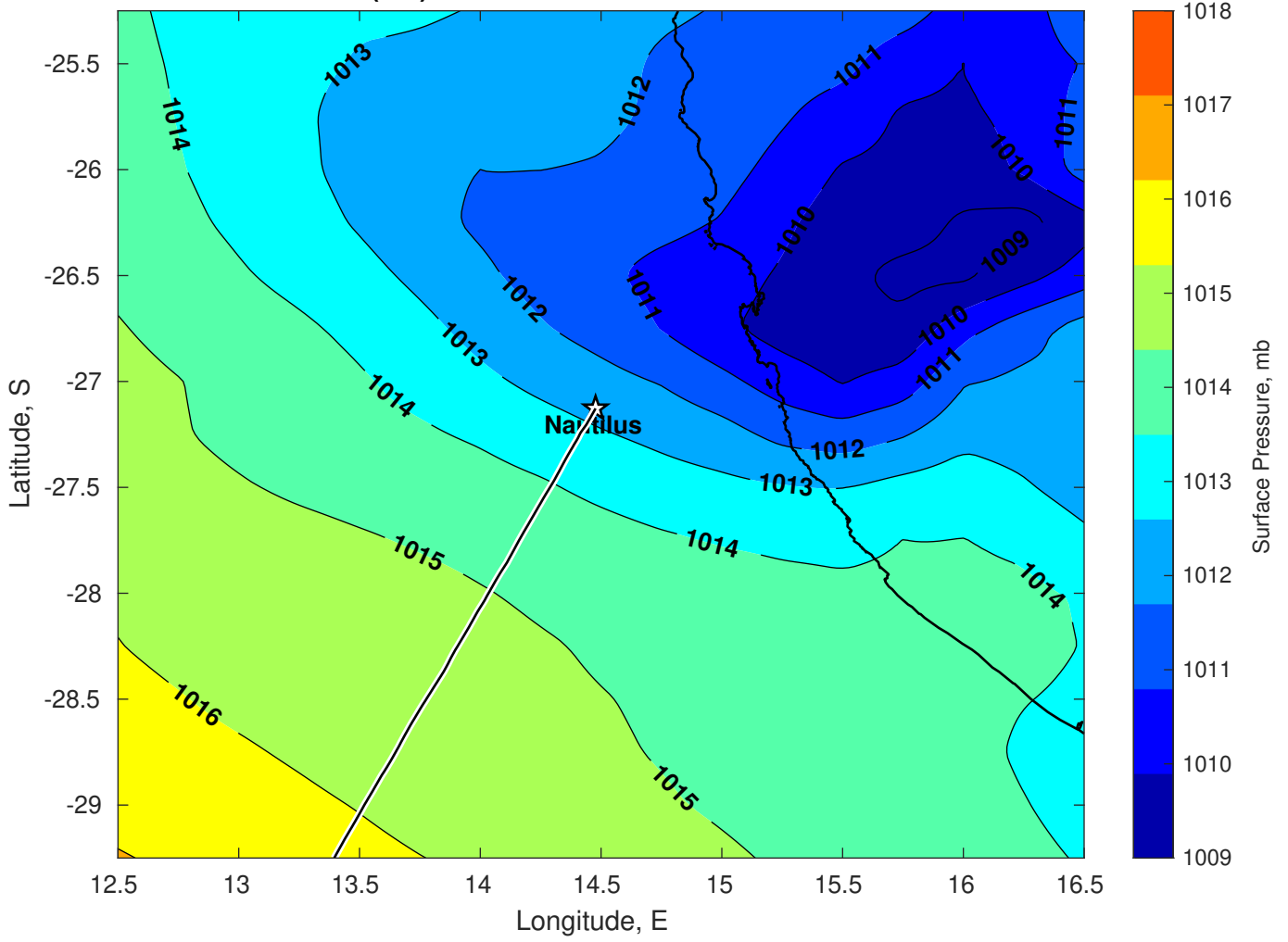
Surface Currents for Nautilus at 13-Feb-2025 00:00:00



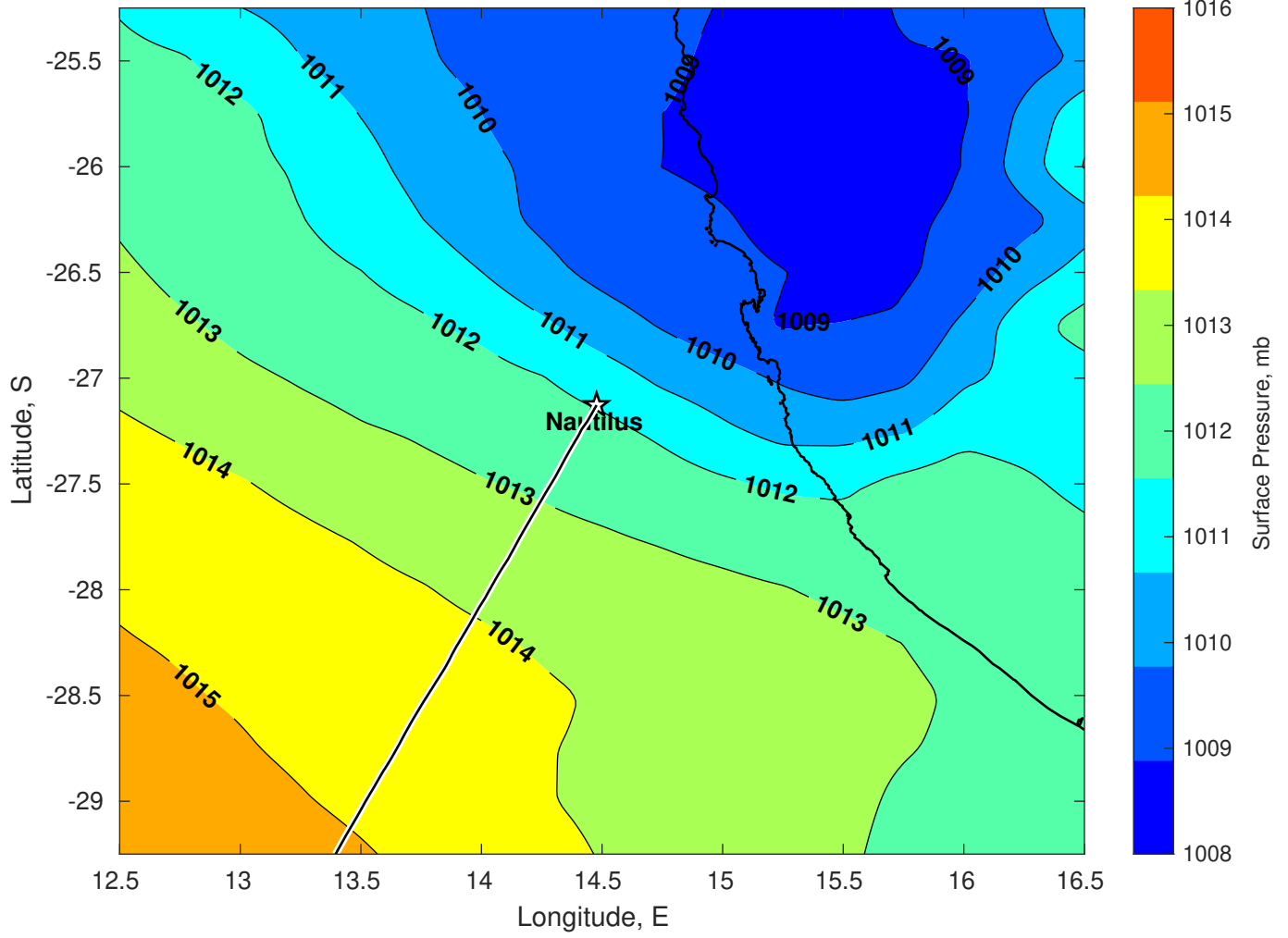
Surface Pressure (mb) for Nautilus at 14-Feb-2025 00:00:00



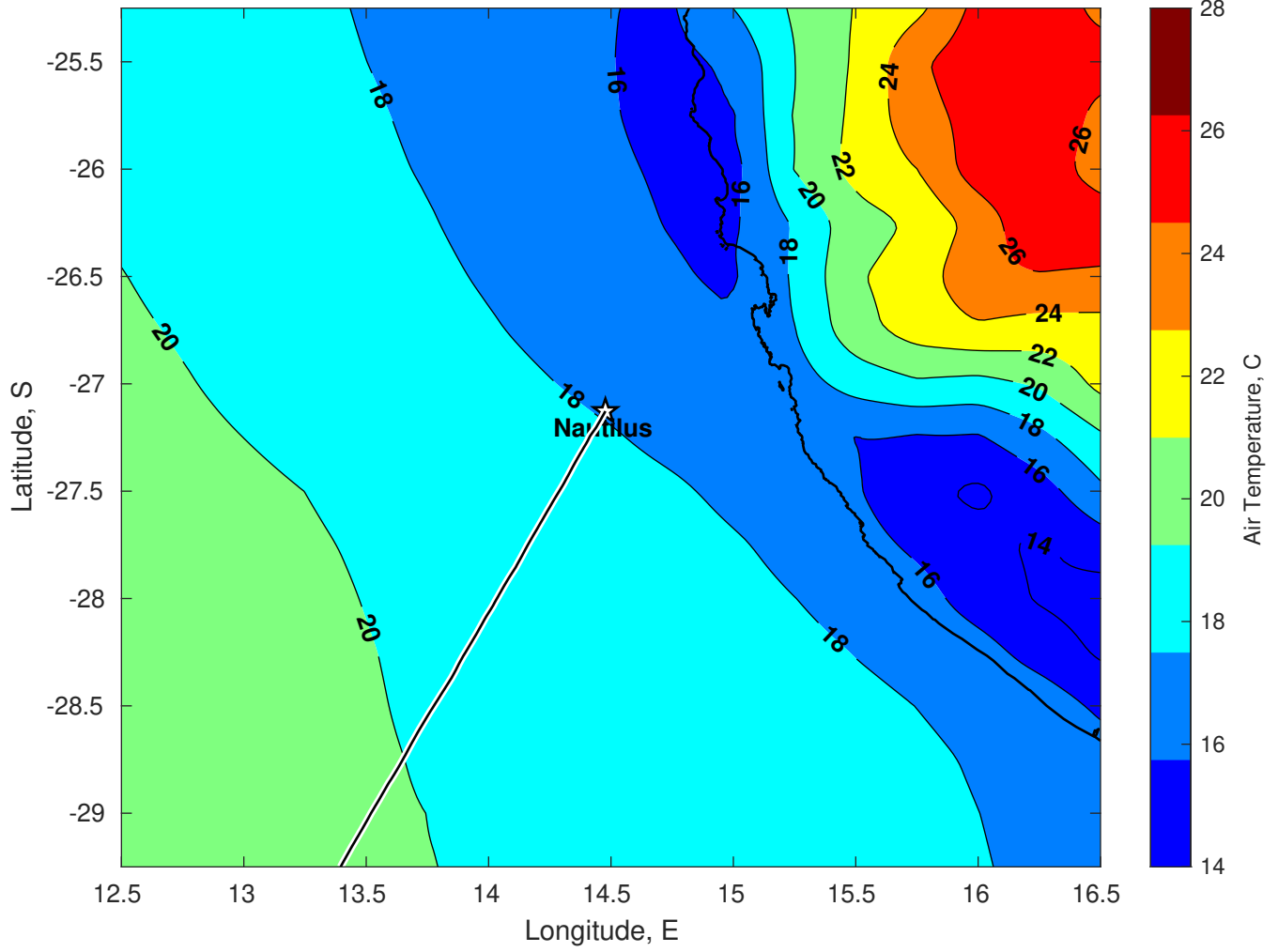
Surface Pressure (mb) for Nautilus at 15-Feb-2025 00:00:00



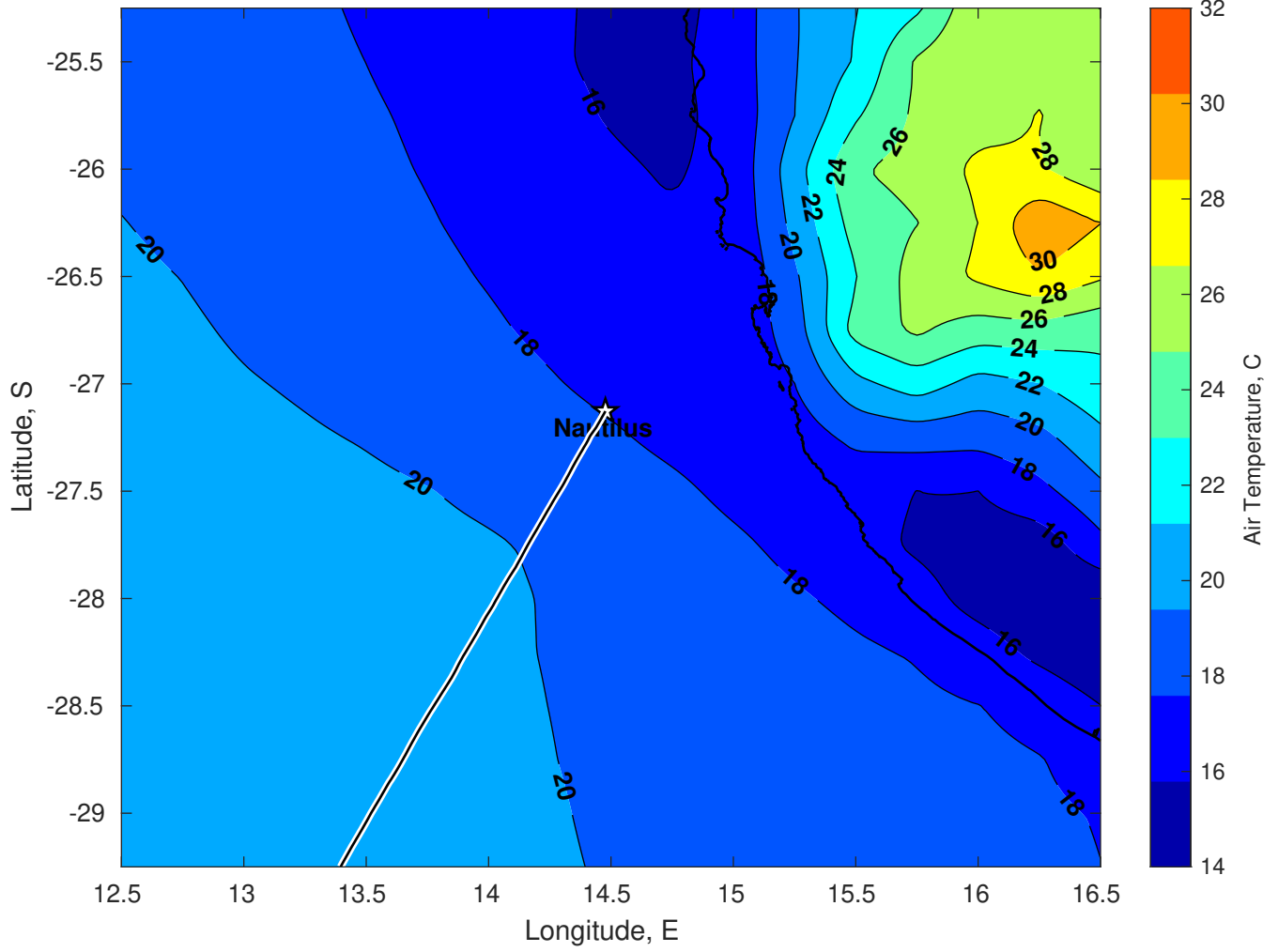
Surface Pressure (mb) for Nautilus at 16-Feb-2025 00:00:00



Air Temperature (C) for Nautilus at 14-Feb-2025



Air Temperature (C) for Nautilus at 14-Feb-2025



Air Temperature (C) for Nautilus at 14-Feb-2025

