

\*\*\*\*\*

Marine Weather Forecast for TOTAL Namibia GTS

Forecast valid as of 14-Feb-2025 0900 GMT

\*\*\*\*\*

All times are local.

Today

Winds: NE, 20-25 kts.

Waves: NW, 10-11 feet, 13-14 sec.

No currents available.

Tonight

Winds: NE, 20-25 kts.

Waves: NW, 10-11 feet, 13-14 sec.

No currents available.

Saturday

Winds: NE, 25-30 kts.

Waves: NW, 10-11 feet, 12-13 sec.

No currents available.

Saturday Night

Winds: NE, 25-30 kts.

Waves: N, 10-11 feet, 7-8 sec.

No currents available.

Sunday

Winds: NE, 25-30 kts.

Waves: N, 10-11 feet, 16-17 sec.

No currents available.

Sunday Night

Winds: NE, 20-25 kts.

Waves: NW, 10-11 feet, 15-16 sec.

No currents available.

Monday

Winds: NE, 20-25 kts.

Waves: NW, 10-11 feet, 15-16 sec.

No currents available.

Monday Night

Winds: NE, 20-25 kts.

Waves: NW, 9-10 feet, 14-15 sec.

No currents available.

Tuesday

Winds: NE, 20-25 kts.

Waves: NW, 9-10 feet, 13-14 sec.

No currents available.

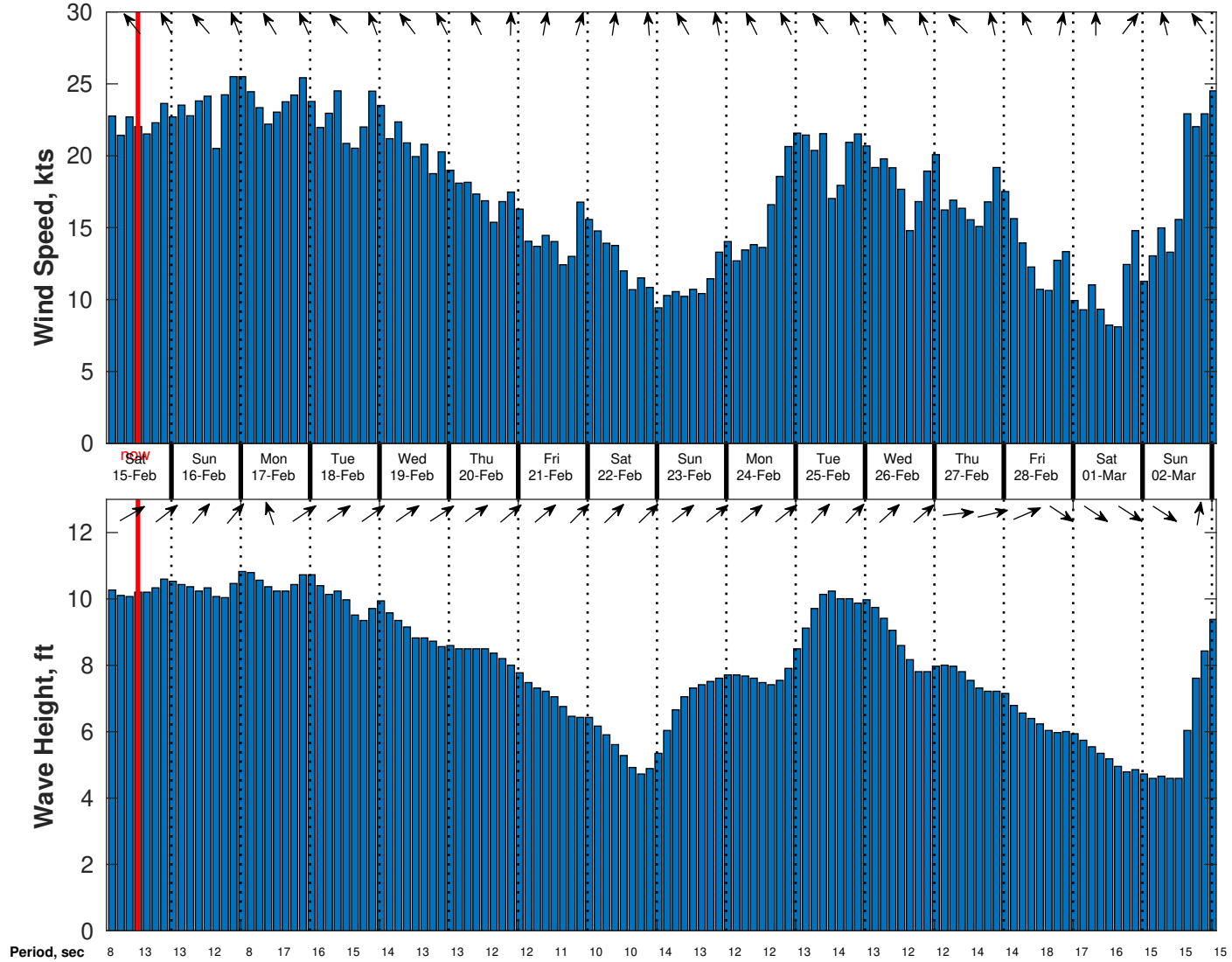
Tuesday Night

Winds: NE, 15-20 kts.

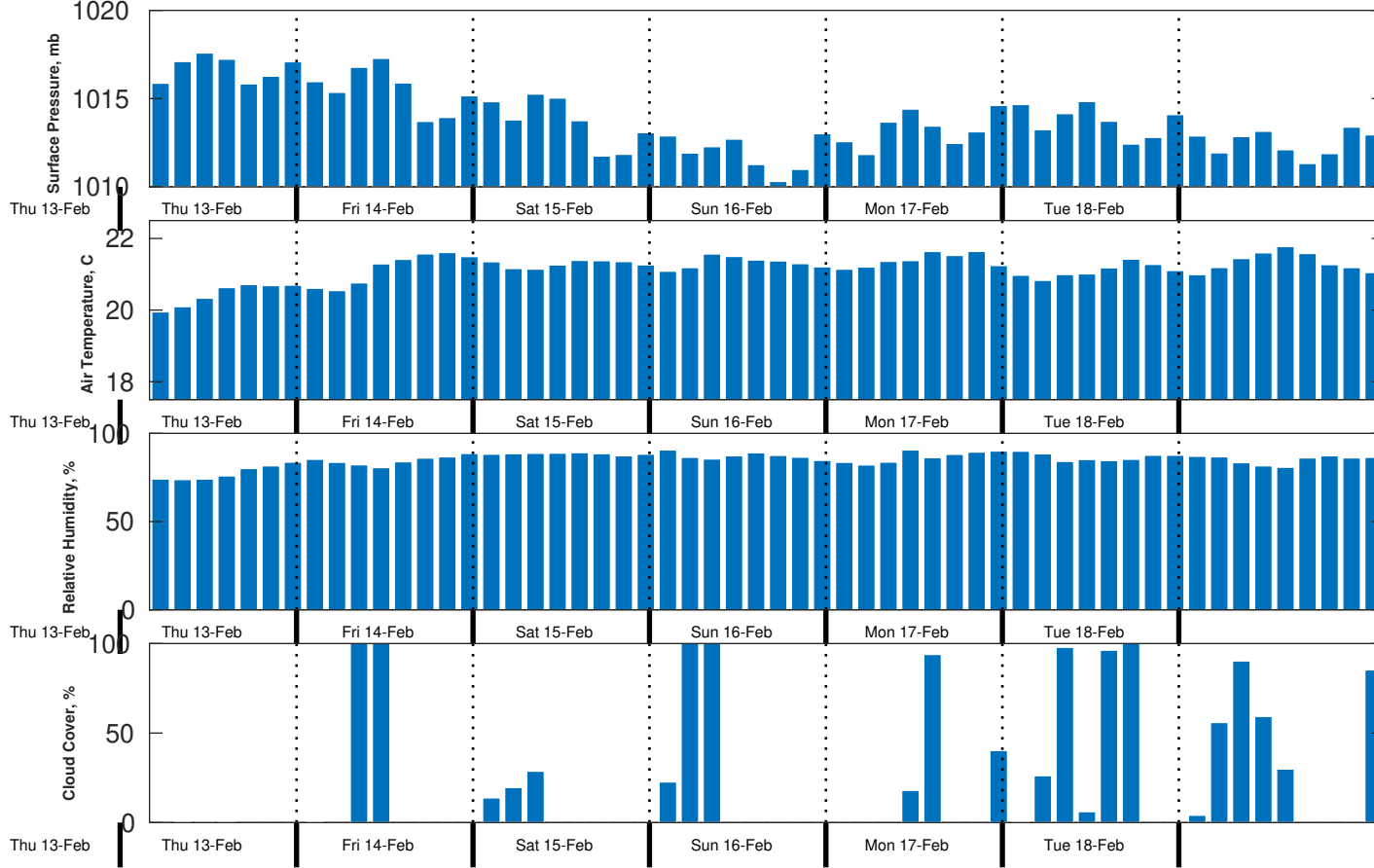
Waves: NW, 8-9 feet, 13-14 sec.

No currents available.

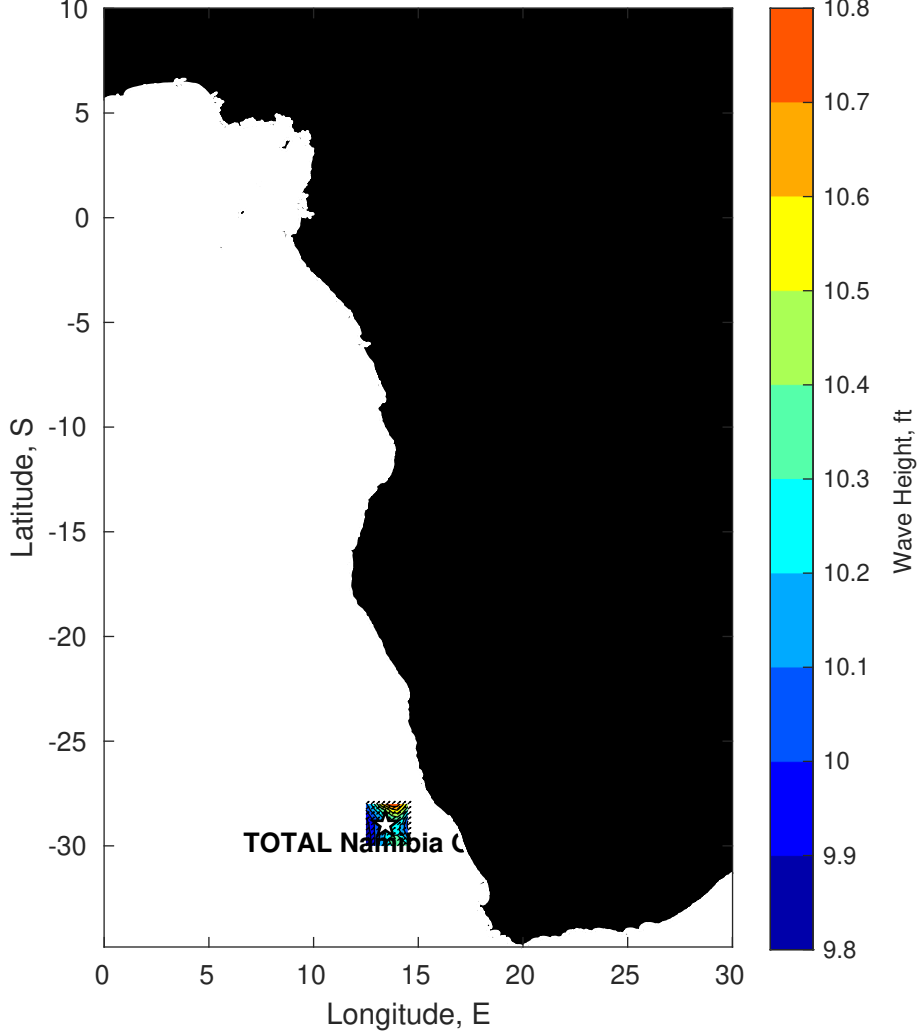
Wind & Wave Forecast for TOTAL Namibia GTS from 14-Feb-2025 02:00:00 to 02-Mar-2025 02:00:00



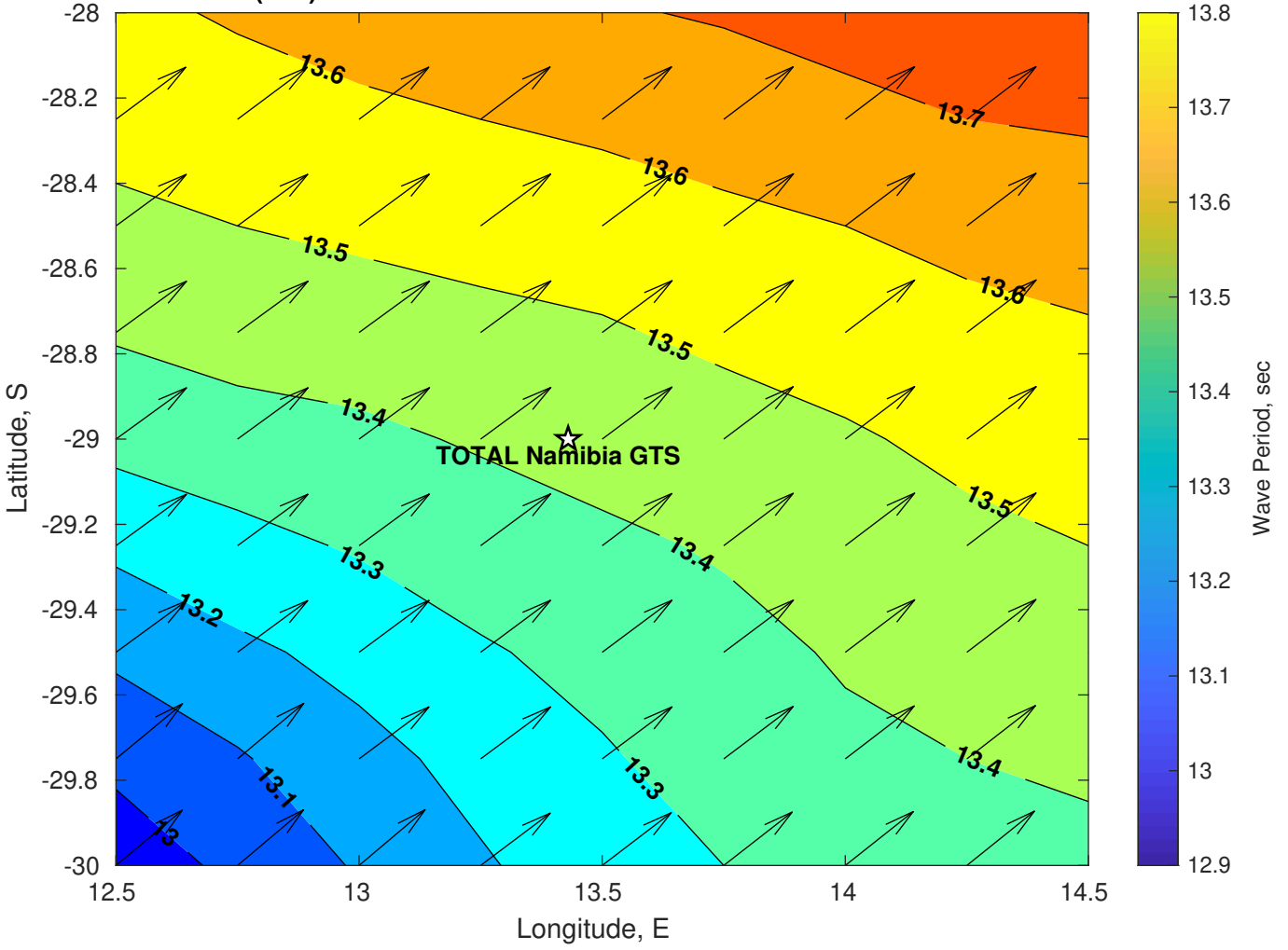
**Met Forecast for TOTAL Namibia GTS from 14-Feb-2025 00:00:00 to 21-Feb-2025 00:00:00**



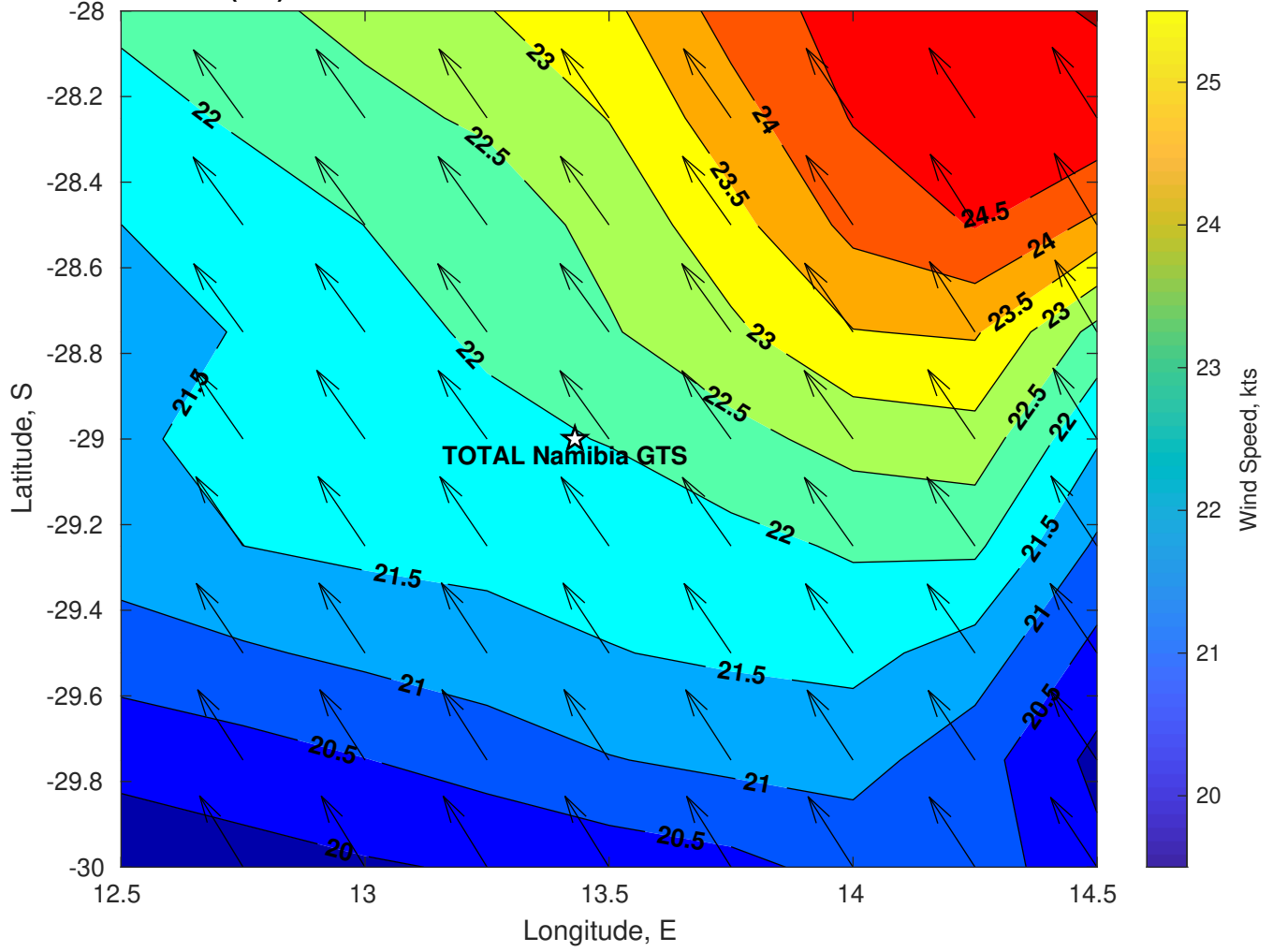
Wave Height (ft) for TOTAL Namibia GTS at 14-Feb-2025 09:00:00



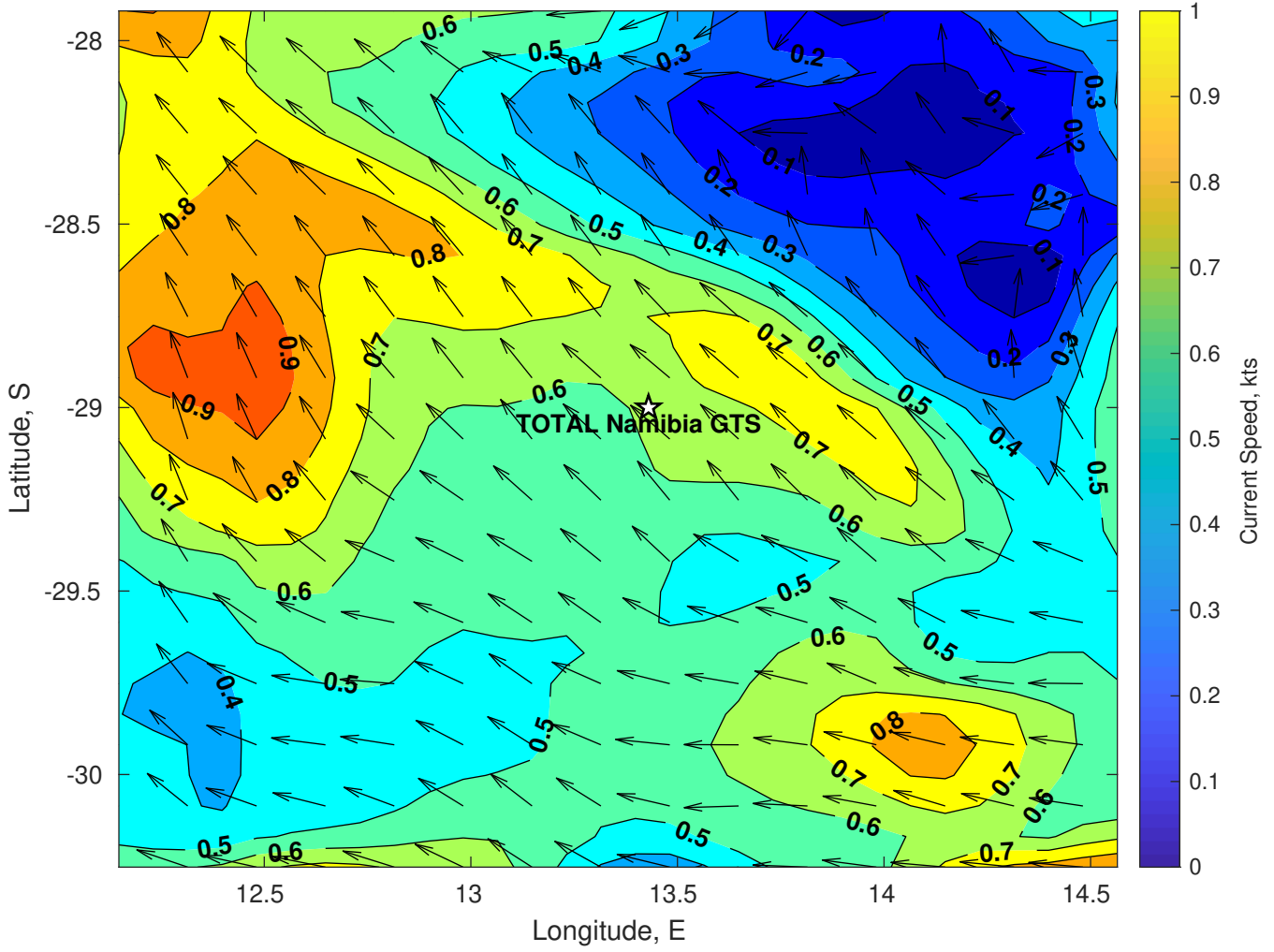
Wave Period (sec) for TOTAL Namibia GTS at 14-Feb-2025 09:00:00



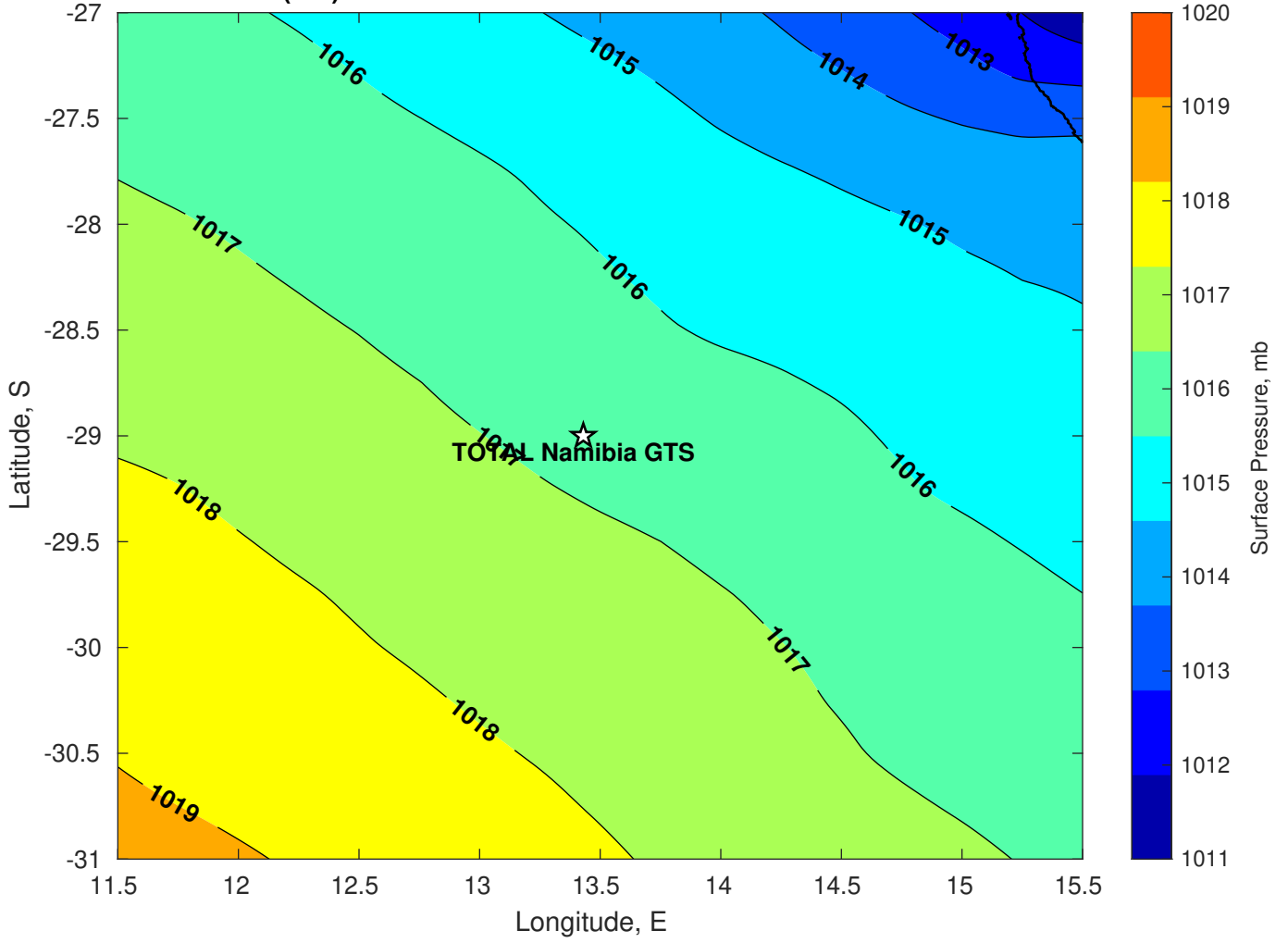
**Winds (kts) for TOTAL Namibia GTS at 14-Feb-2025 09:00:00**



Surface Currents for TOTAL Namibia GTS at 13-Feb-2025 00:00:00

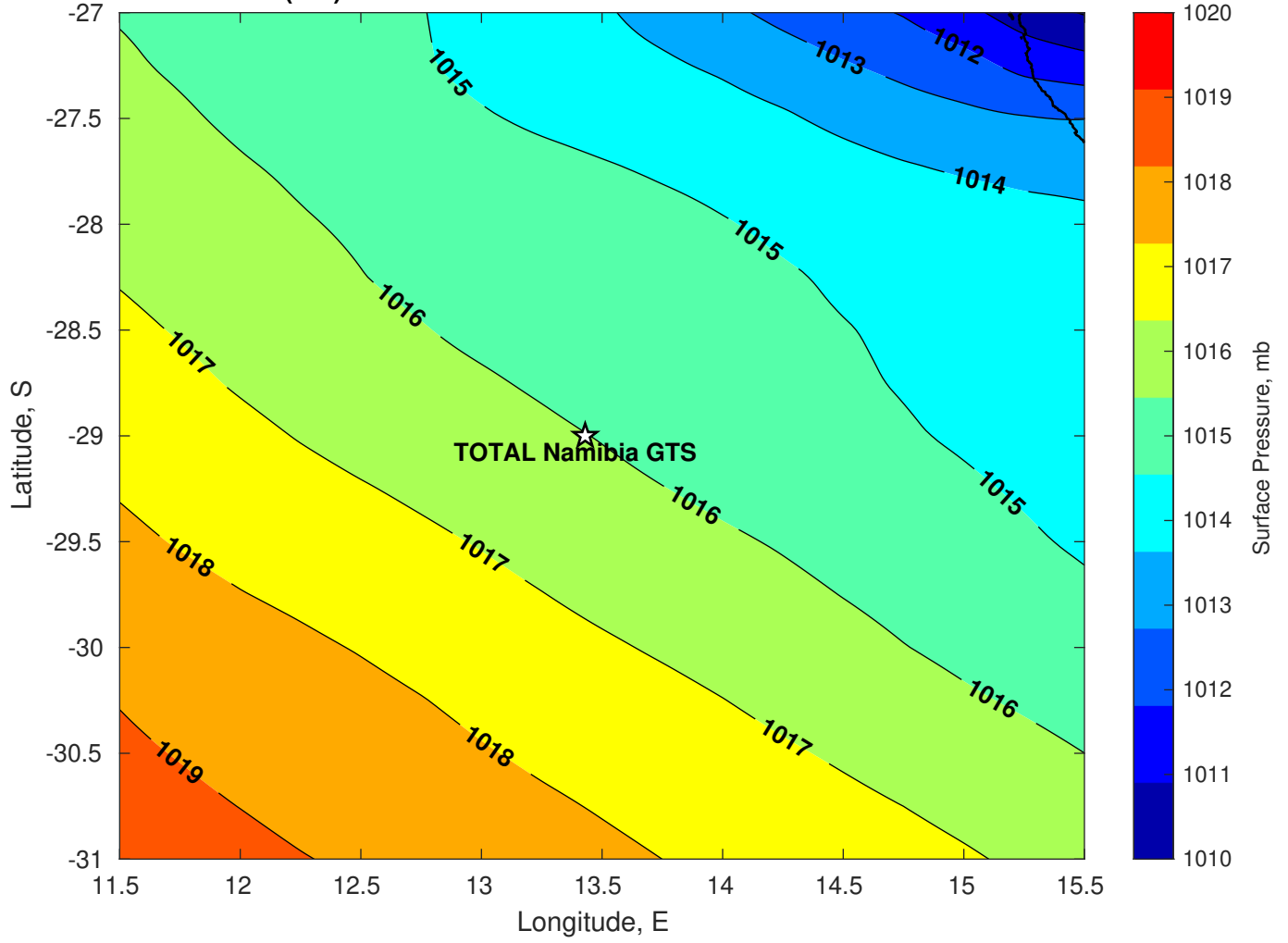


Surface Pressure (mb) for TOTAL Namibia GTS at 14-Feb-2025 00:00:00

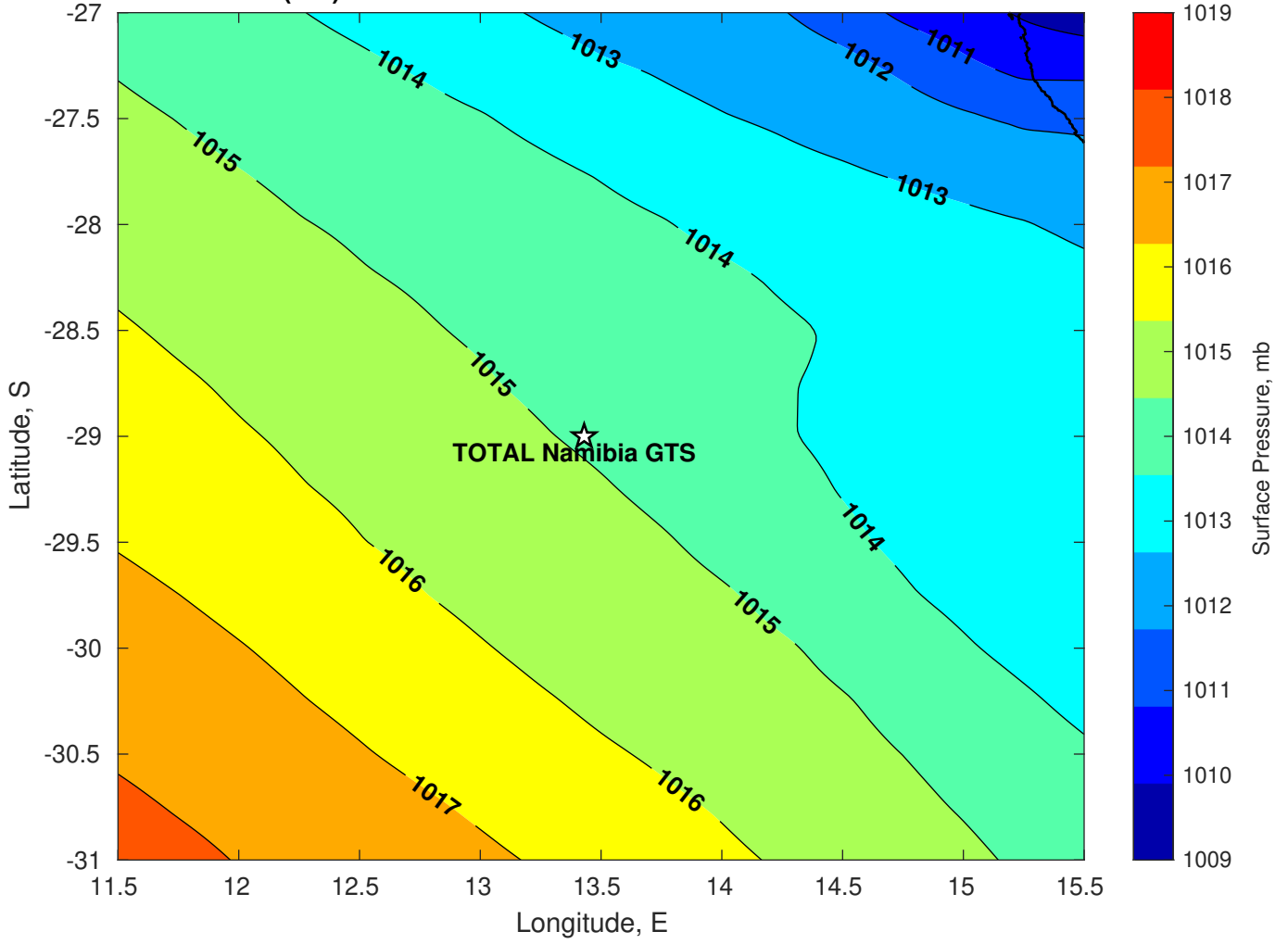




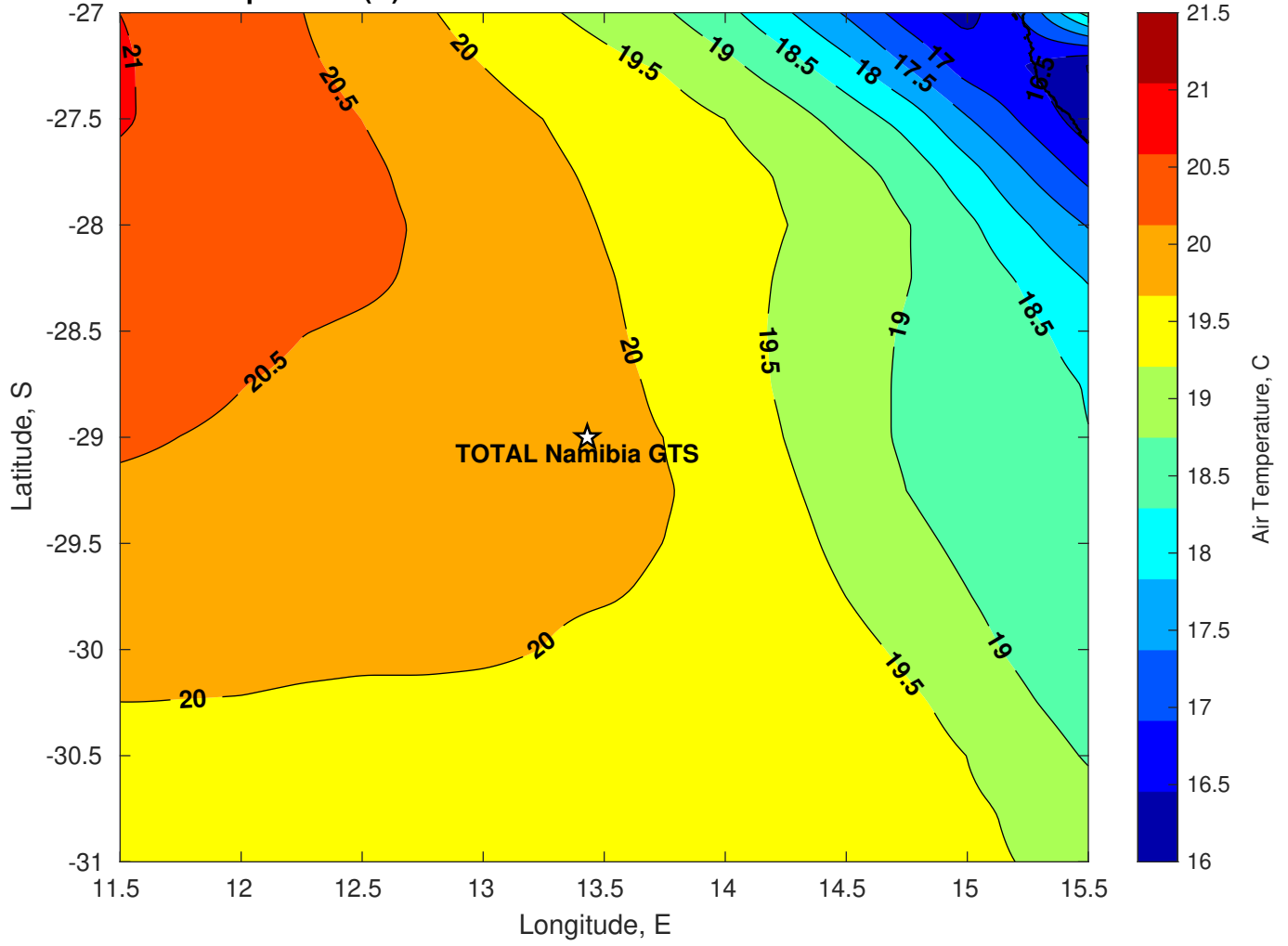
Surface Pressure (mb) for TOTAL Namibia GTS at 15-Feb-2025 00:00:00



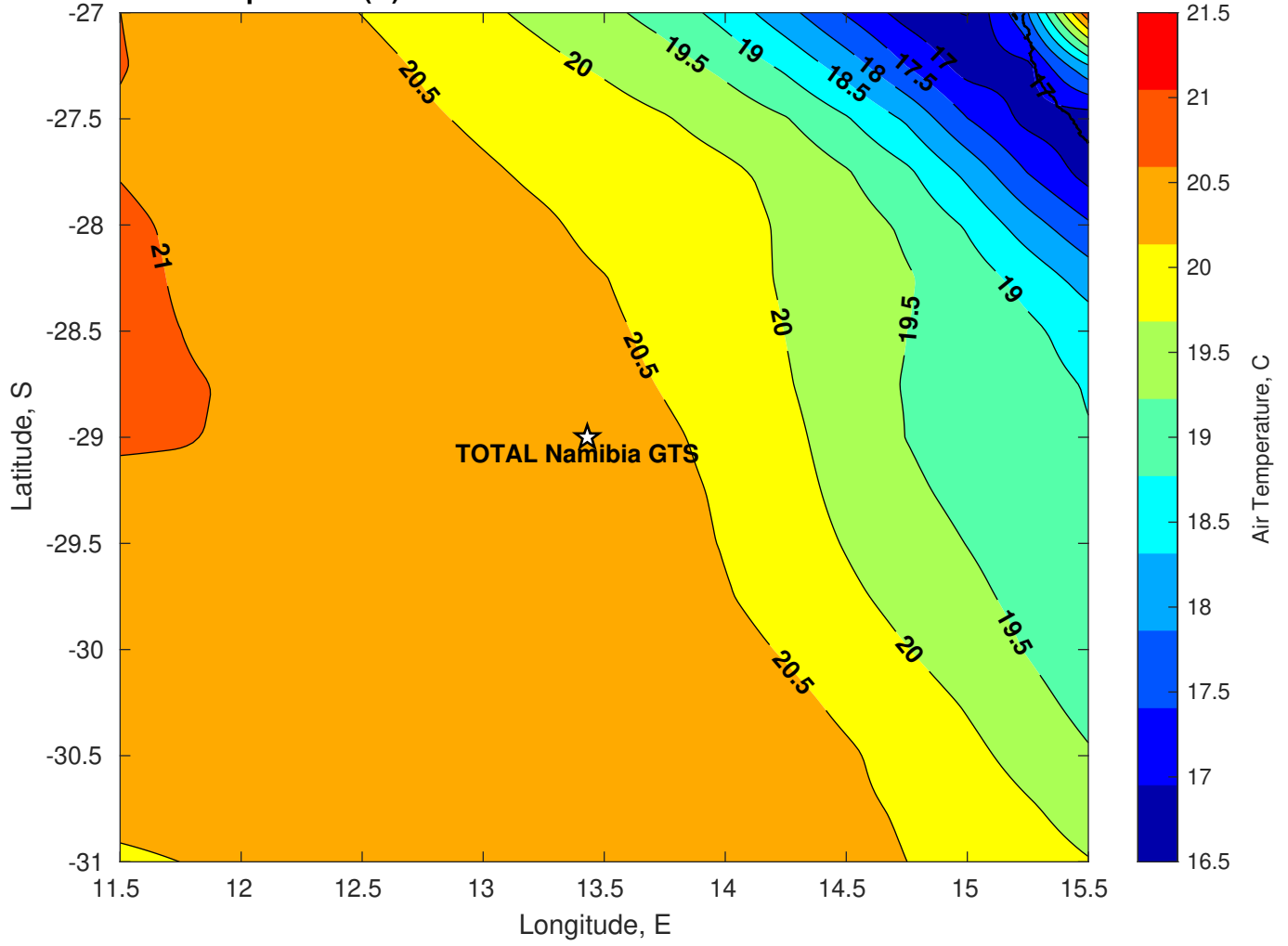
Surface Pressure (mb) for TOTAL Namibia GTS at 16-Feb-2025 00:00:00



**Air Temperature (C) for TOTAL Namibia GTS at 14-Feb-2025**



**Air Temperature (C) for TOTAL Namibia GTS at 14-Feb-2025**



**Air Temperature (C) for TOTAL Namibia GTS at 14-Feb-2025**

