

\*\*\*\*\*

Marine Weather Forecast for CSA (ONHYM) PPL EBS - Cote d'Ivoire

Forecast valid as of 15-Feb-2025 0900 GMT

\*\*\*\*\*

All times are local.

Today

Winds: N, 10-15 kts.

Waves: N, 3-4 feet, 15-16 sec.

No currents available.

Tonight

Winds: N, 10-15 kts.

Waves: N, 3-4 feet, 14-15 sec.

No currents available.

Sunday

Winds: NW, 10-15 kts.

Waves: N, 3-4 feet, 13-14 sec.

No currents available.

Sunday Night

Winds: NW, 10-15 kts.

Waves: N, 3-4 feet, 12-13 sec.

No currents available.

Monday

Winds: NW, 10-15 kts.

Waves: N, 3-4 feet, 18-19 sec.

No currents available.

Monday Night

Winds: NW, 10-15 kts.

Waves: N, 3-4 feet, 17-18 sec.

No currents available.

Tuesday

Winds: NW, 10-15 kts.

Waves: N, 3-4 feet, 16-17 sec.

No currents available.

Tuesday Night

Winds: NW, 10-15 kts.

Waves: N, 4-5 feet, 15-16 sec.

No currents available.

Wednesday

Winds: NW, 10-15 kts.

Waves: N, 3-4 feet, 14-15 sec.

No currents available.

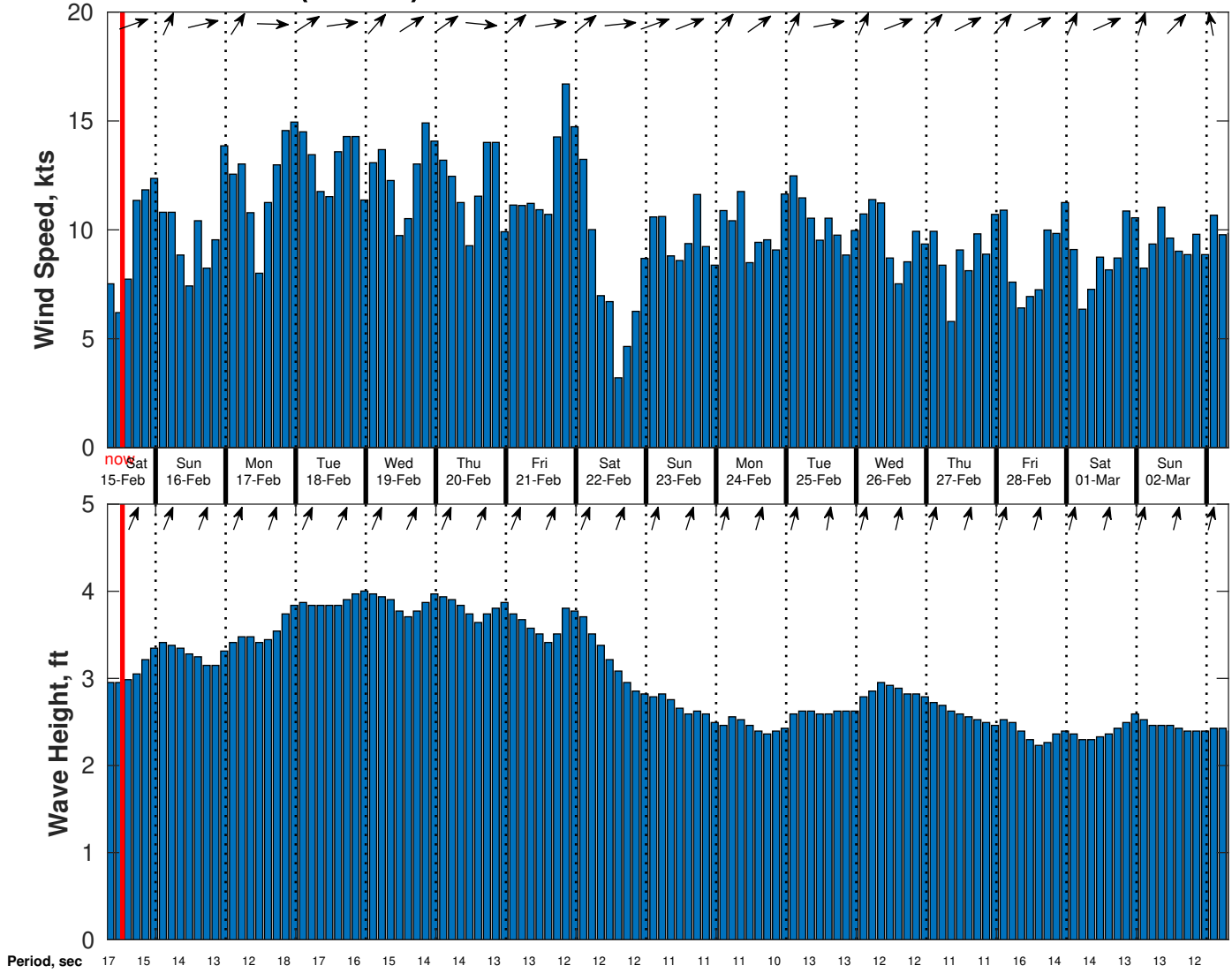
Wednesday Night

Winds: NW, 10-15 kts.

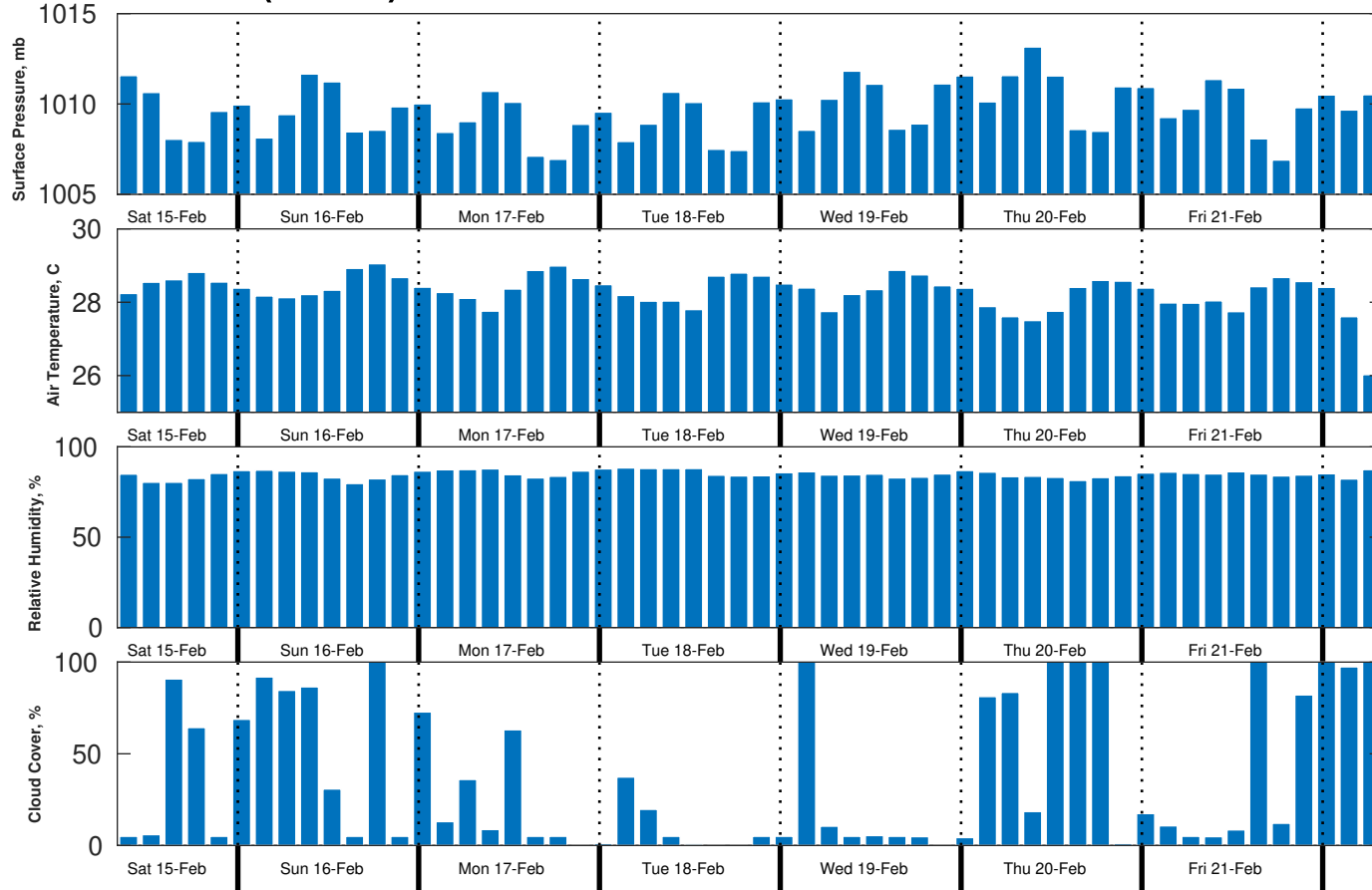
Waves: N, 3-4 feet, 14-15 sec.

No currents available.

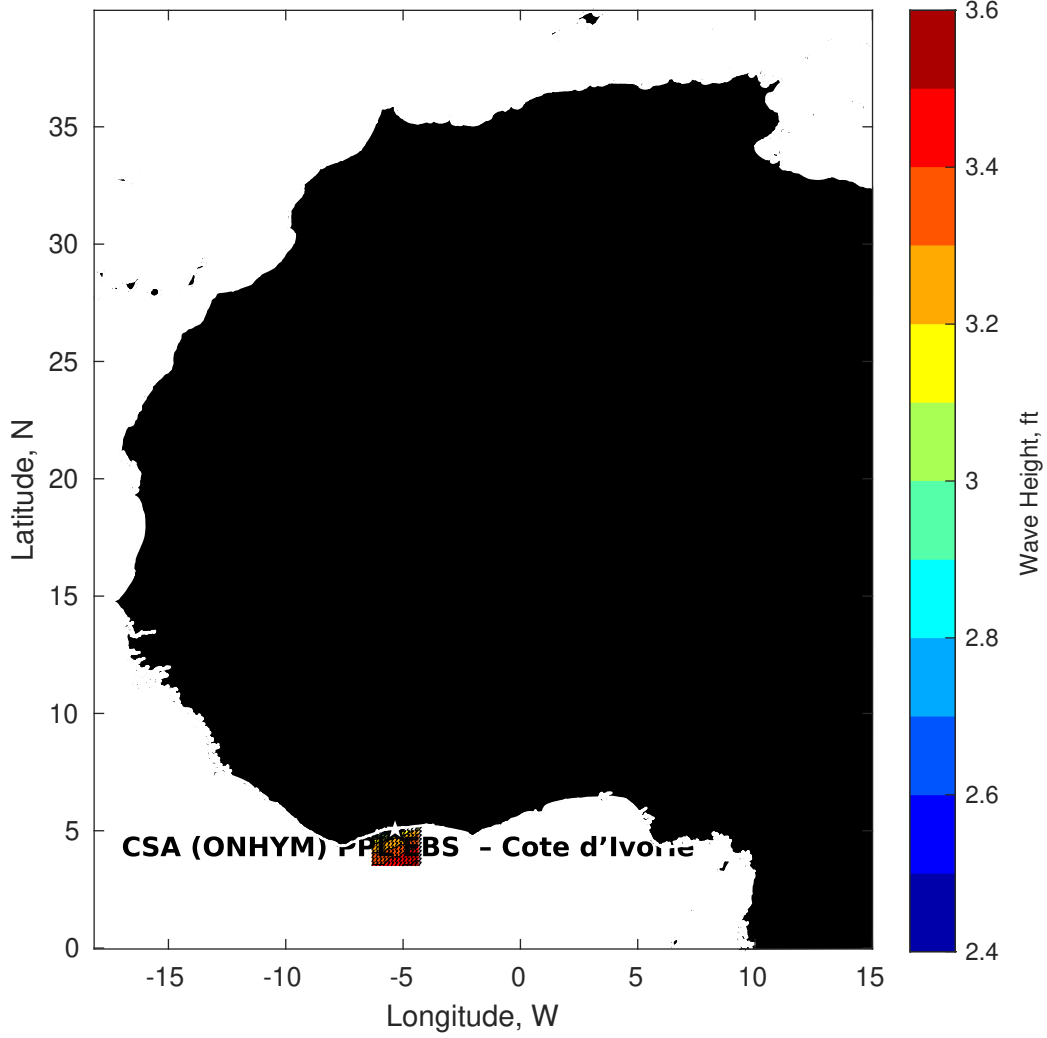
**Wind & Wave Forecast for CSA (ONHYM) PPL EBS - Cote d'Ivoire from 15-Feb-2025 07:00:00 to 03-Mar-2025 07:00:00**



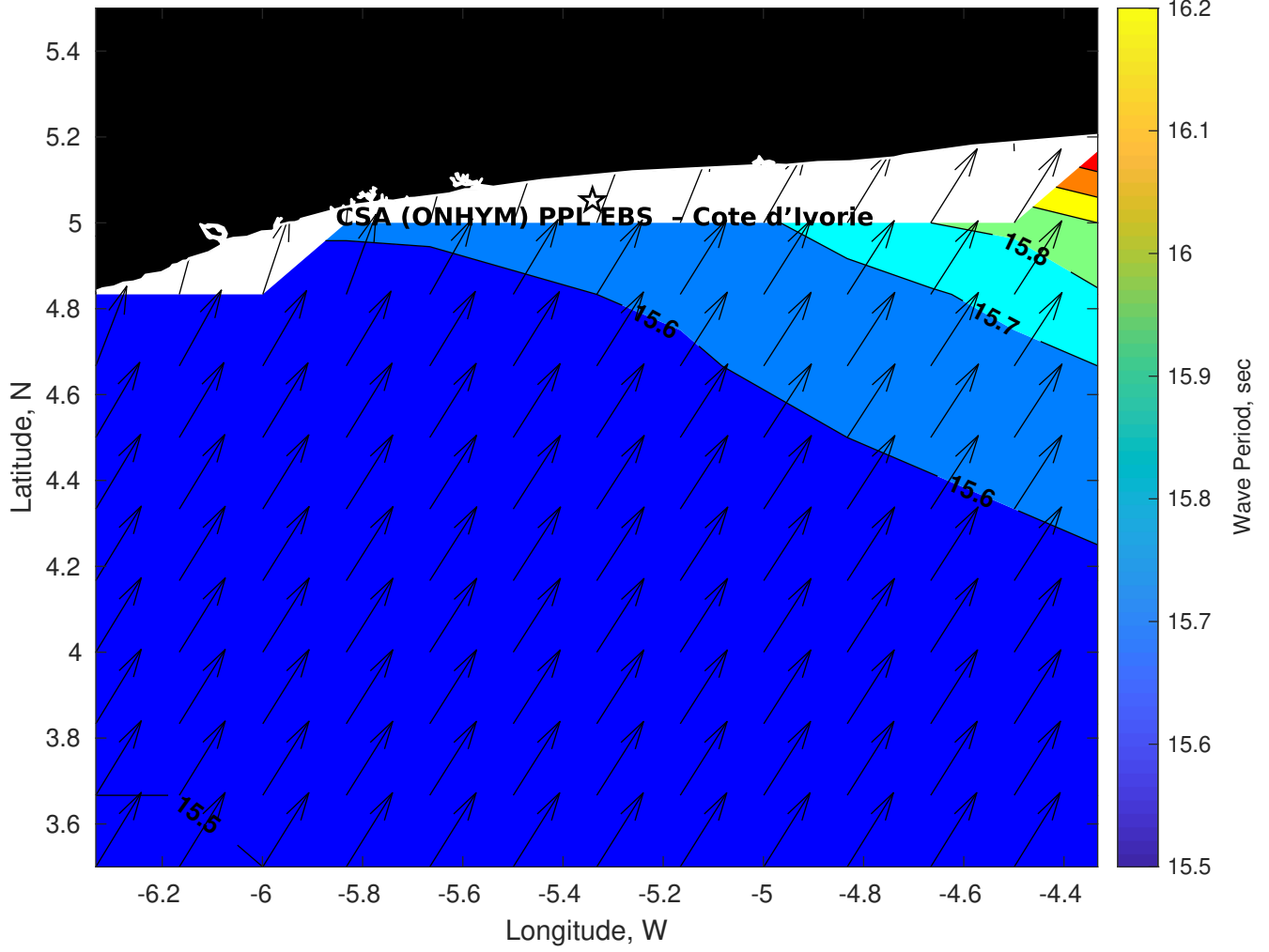
**Met Forecast for CSA (ONHYM) PPL EBS - Cote d'Ivoire from 15-Feb-2025 06:00:00 to 22-Feb-2025 06:00:00**



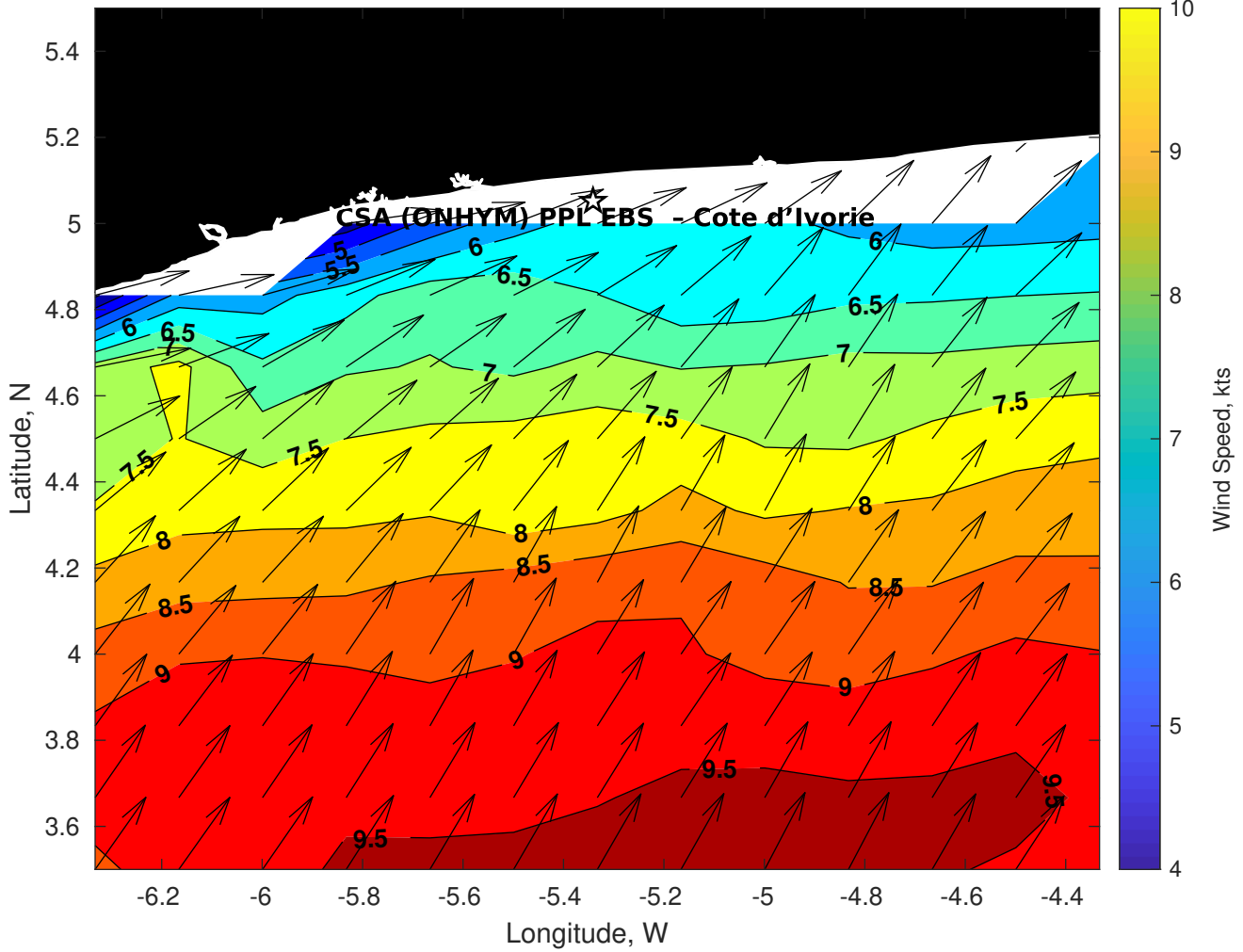
**Wave Height (ft) for CSA (ONHYM) PPL EBS - Cote d'Ivoire at 15-Feb-2025 09:00:00**



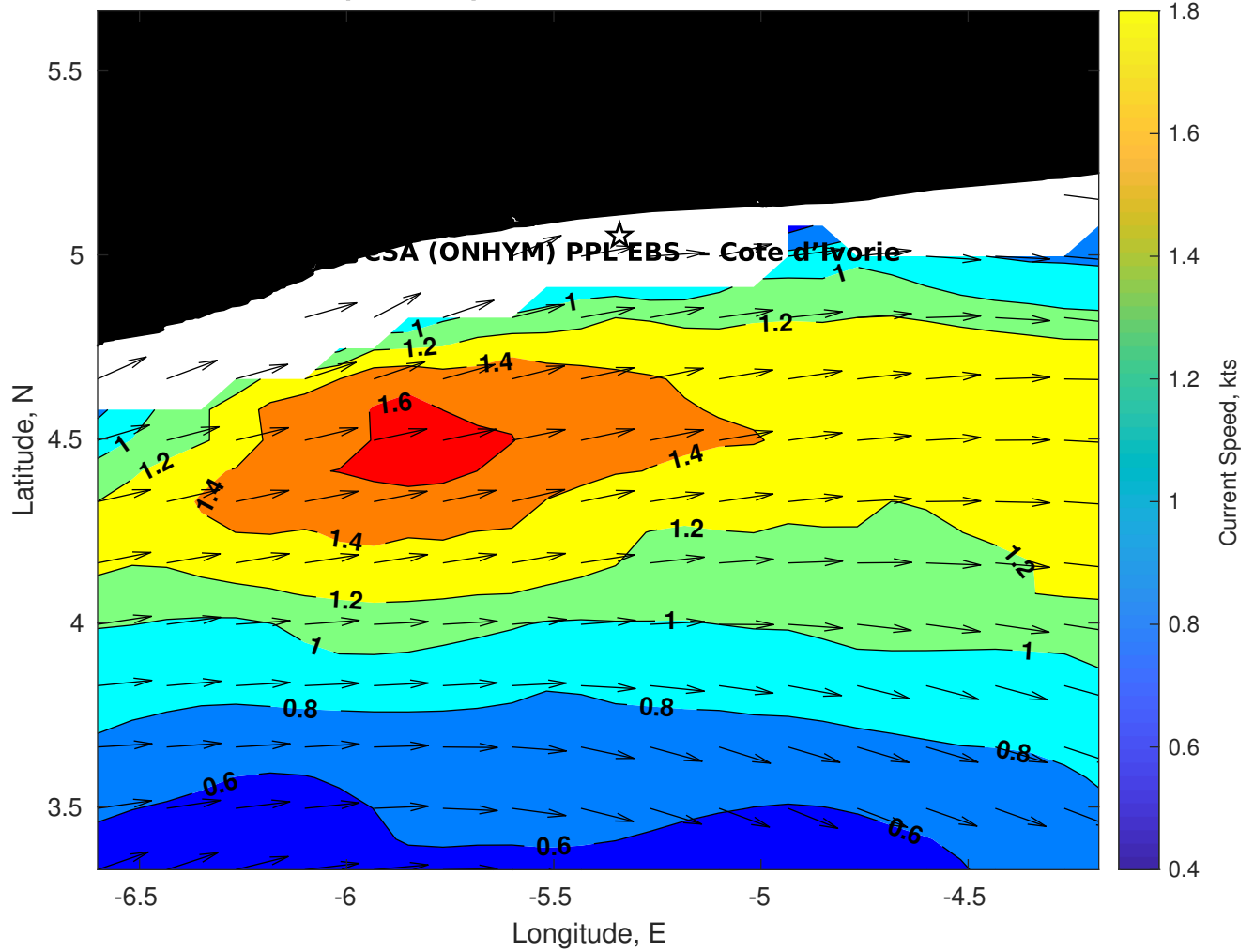
**Wave Period (sec) for CSA (ONHYM) PPL EBS - Cote d'Ivoire at 15-Feb-2025 09:00:00**



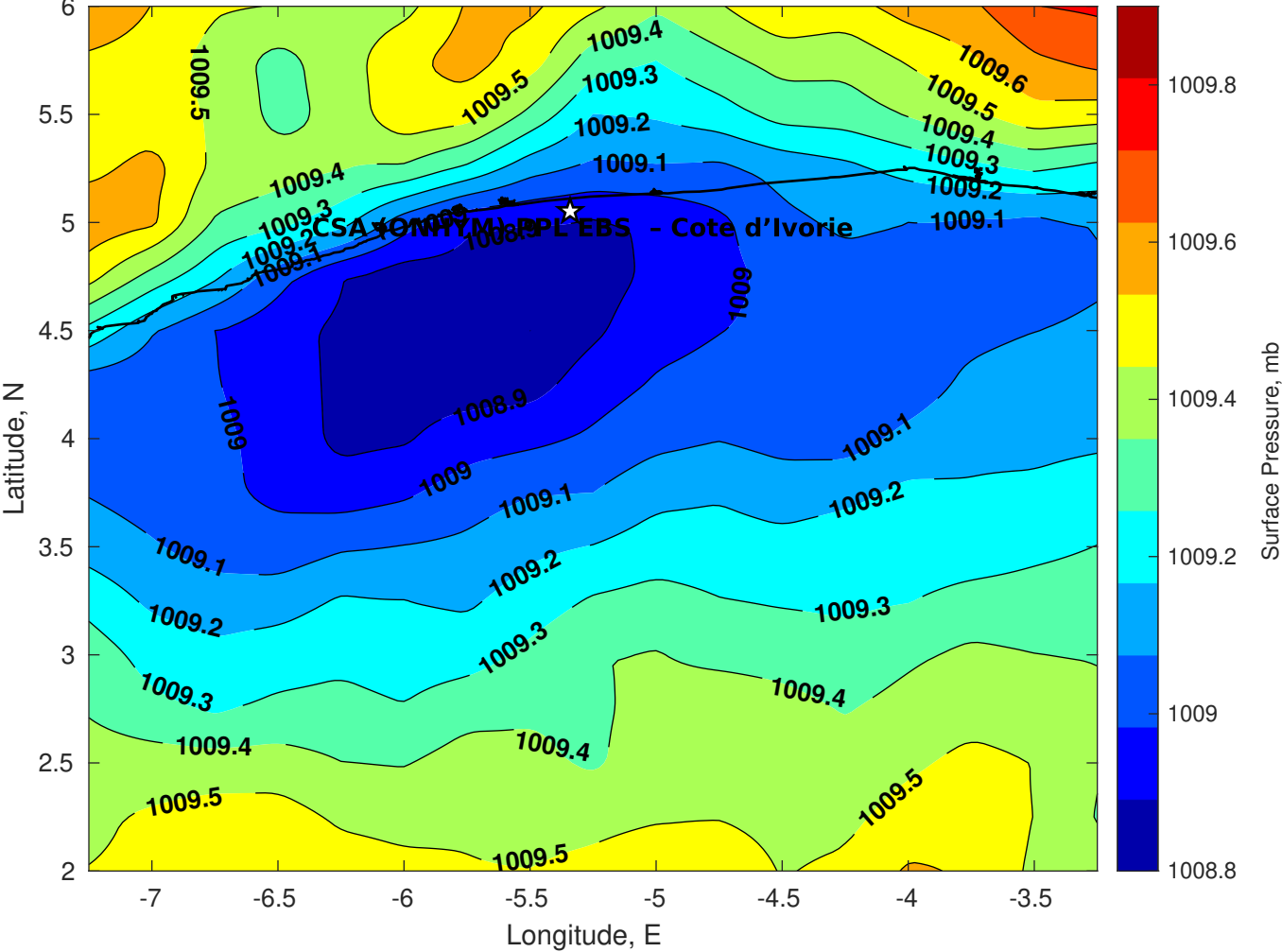
**Winds (kts) for CSA (ONHYM) PPL EBS - Cote d'Ivoire at 15-Feb-2025 09:00:00**



Surface Currents for CSA (ONHYM) PPL EBS - Cote d'Ivoire at 14-Feb-2025 00:00:00

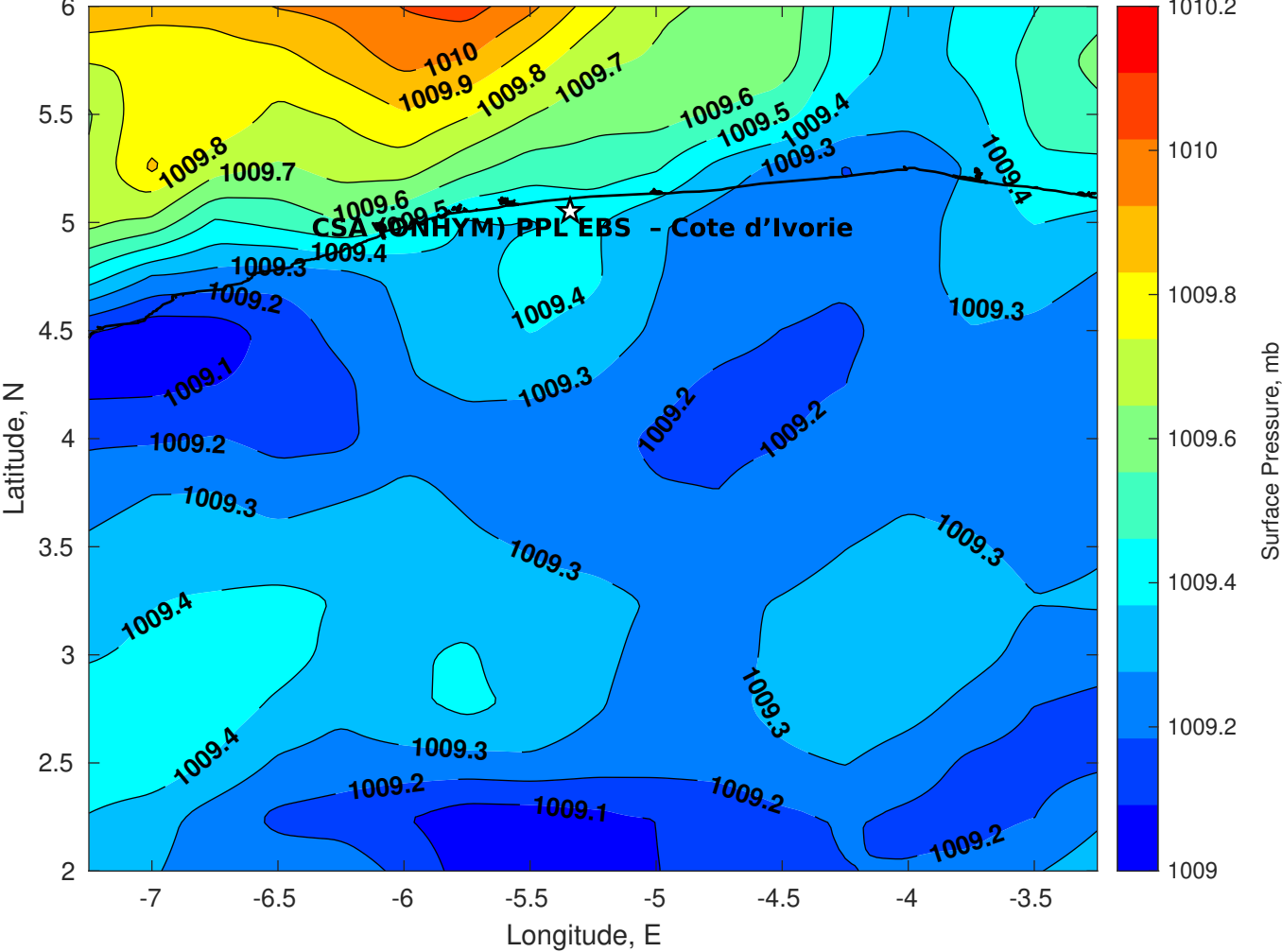


Surface Pressure (mb) for CSA (ONHYM) PPL EBS - Cote d'Ivoire at 15-Feb-2025 06:00:00

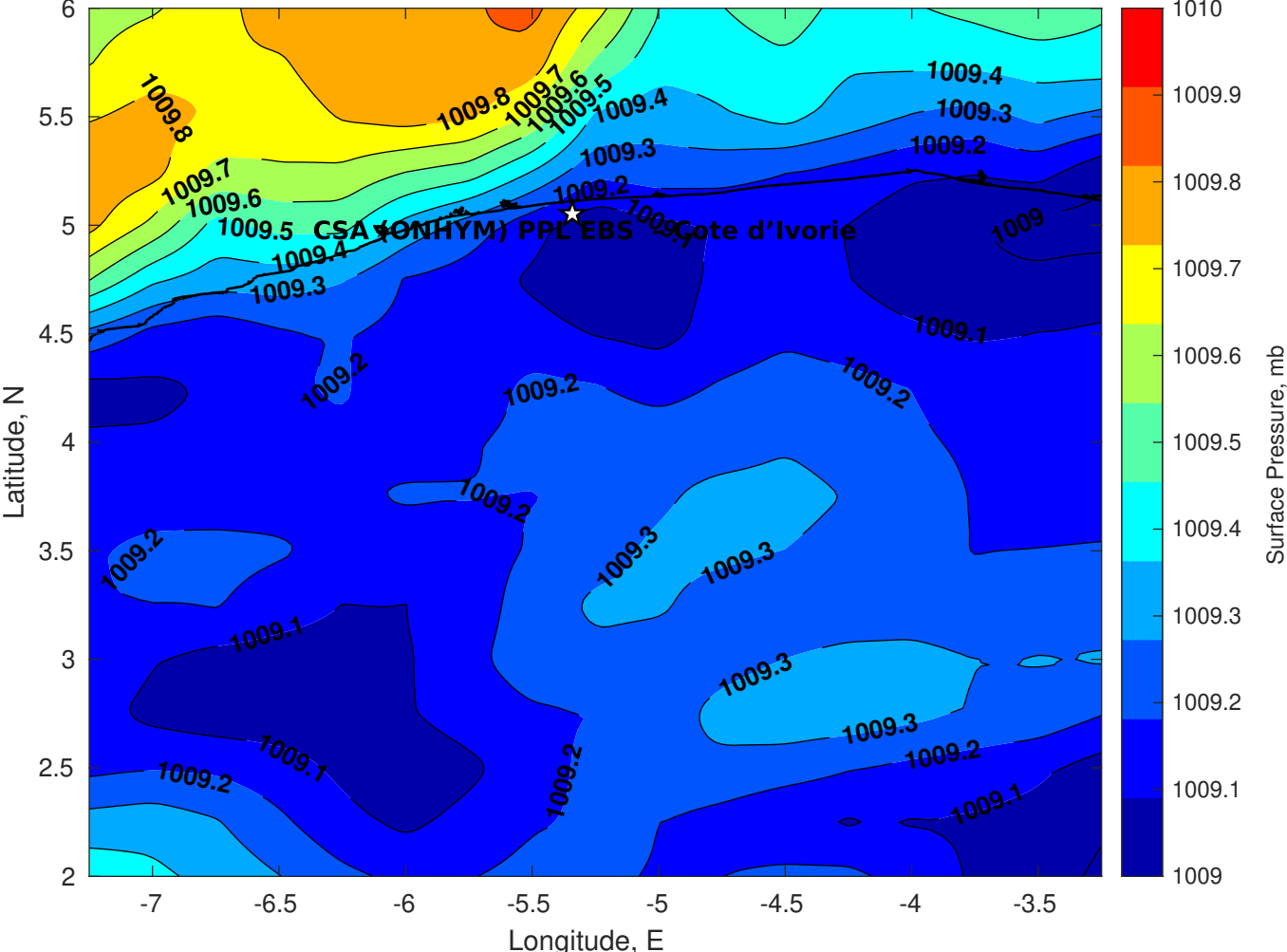




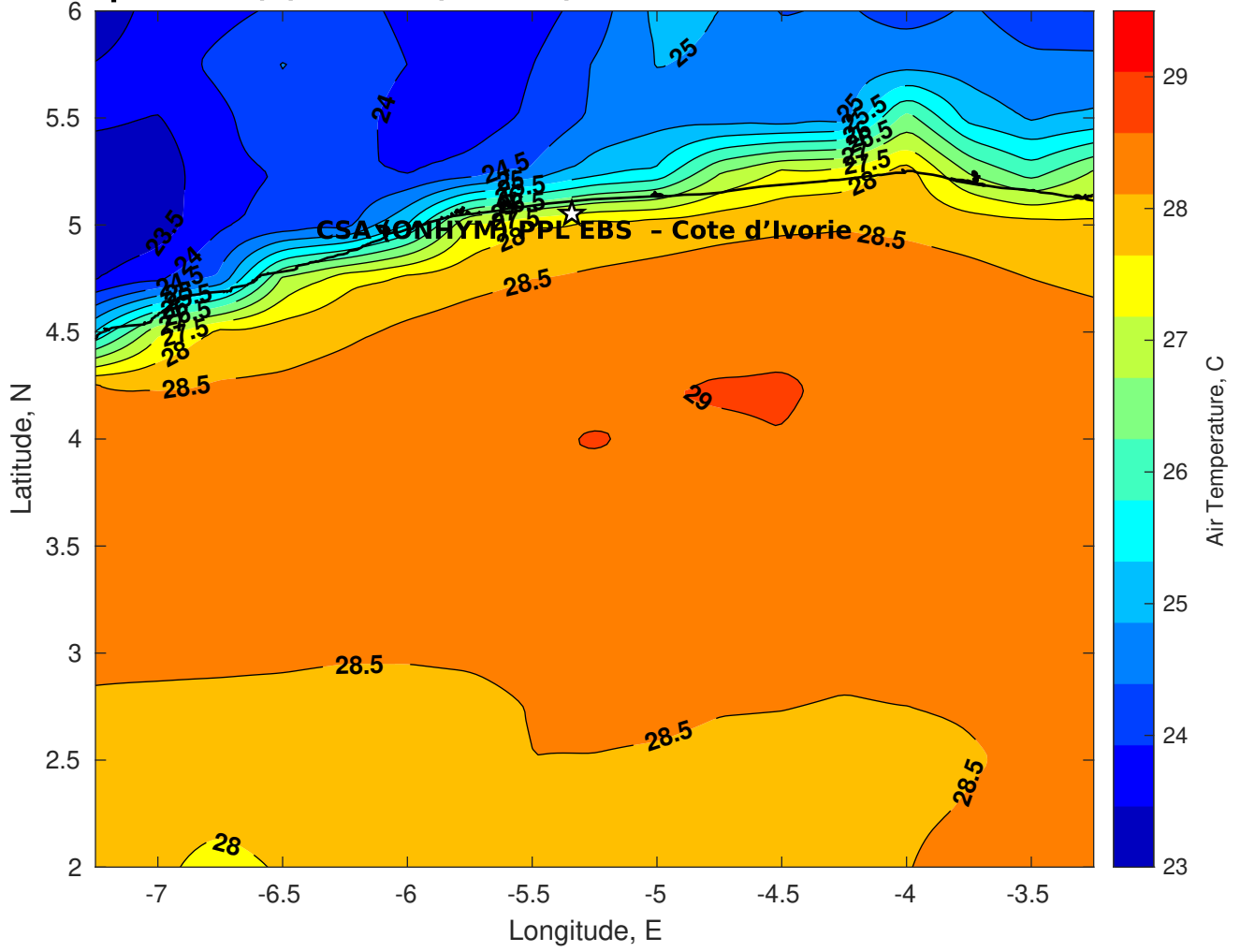
Surface Pressure (mb) for CSA (ONHYM) PPL EBS - Cote d'Ivoire at 16-Feb-2025 06:00:00



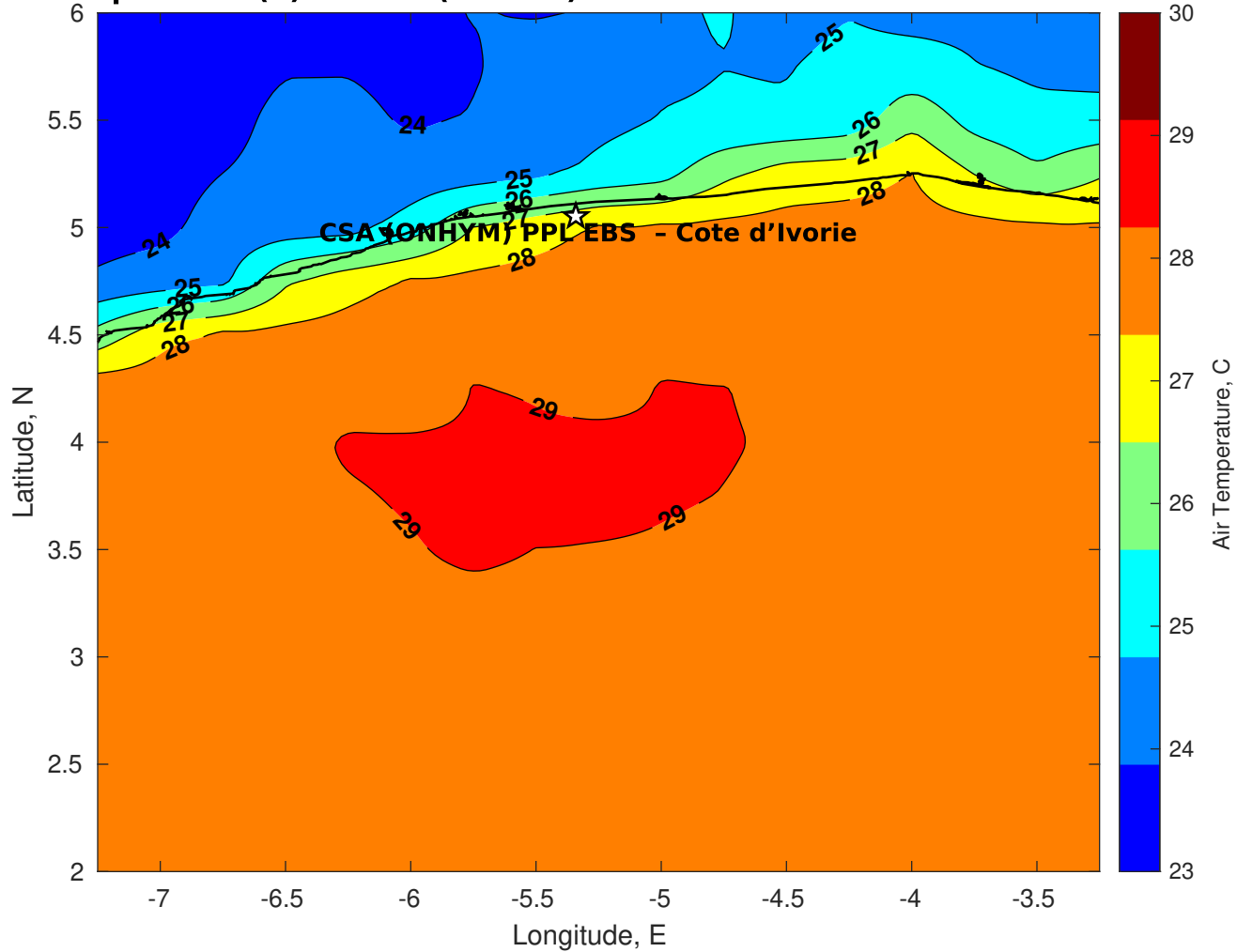
Surface Pressure (mb) for CSA (ONHYM) PPL EBS - Cote d'Ivoire at 17-Feb-2025 06:00:00



**Air Temperature (C) for CSA (ONHYM) PPL EBS - Cote d'Ivoire at 15-Feb-2025**



**Air Temperature (C) for CSA (ONHYM) PPL EBS - Cote d'Ivoire at 15-Feb-2025**



**Air Temperature (C) for CSA (ONHYM) PPL EBS - Cote d'Ivoire at 15-Feb-2025**

