
Marine Weather Forecast for CSA (ONHYM) PPL EBS - Senegal
Forecast valid as of 15-Feb-2025 0900 GMT

All times are local.

Today

Winds: N, 10-15 kts.
Waves: NW, 5-6 feet, 12-13 sec.
No currents available.

Tonight

Winds: N, 10-15 kts.
Waves: NW, 6-7 feet, 15-16 sec.
No currents available.

Sunday

Winds: N, 15-20 kts.
Waves: NW, 7-8 feet, 14-15 sec.
No currents available.

Sunday Night

Winds: N, 10-15 kts.
Waves: NW, 7-8 feet, 14-15 sec.
No currents available.

Monday

Winds: N, 15-20 kts.
Waves: NW, 7-8 feet, 14-15 sec.
No currents available.

Monday Night

Winds: N, 10-15 kts.
Waves: NW, 7-8 feet, 13-14 sec.
No currents available.

Tuesday

Winds: N, 10-15 kts.
Waves: NW, 6-7 feet, 18-19 sec.
No currents available.

Tuesday Night

Winds: N, 15-20 kts.
Waves: NW, 9-10 feet, 18-19 sec.
No currents available.

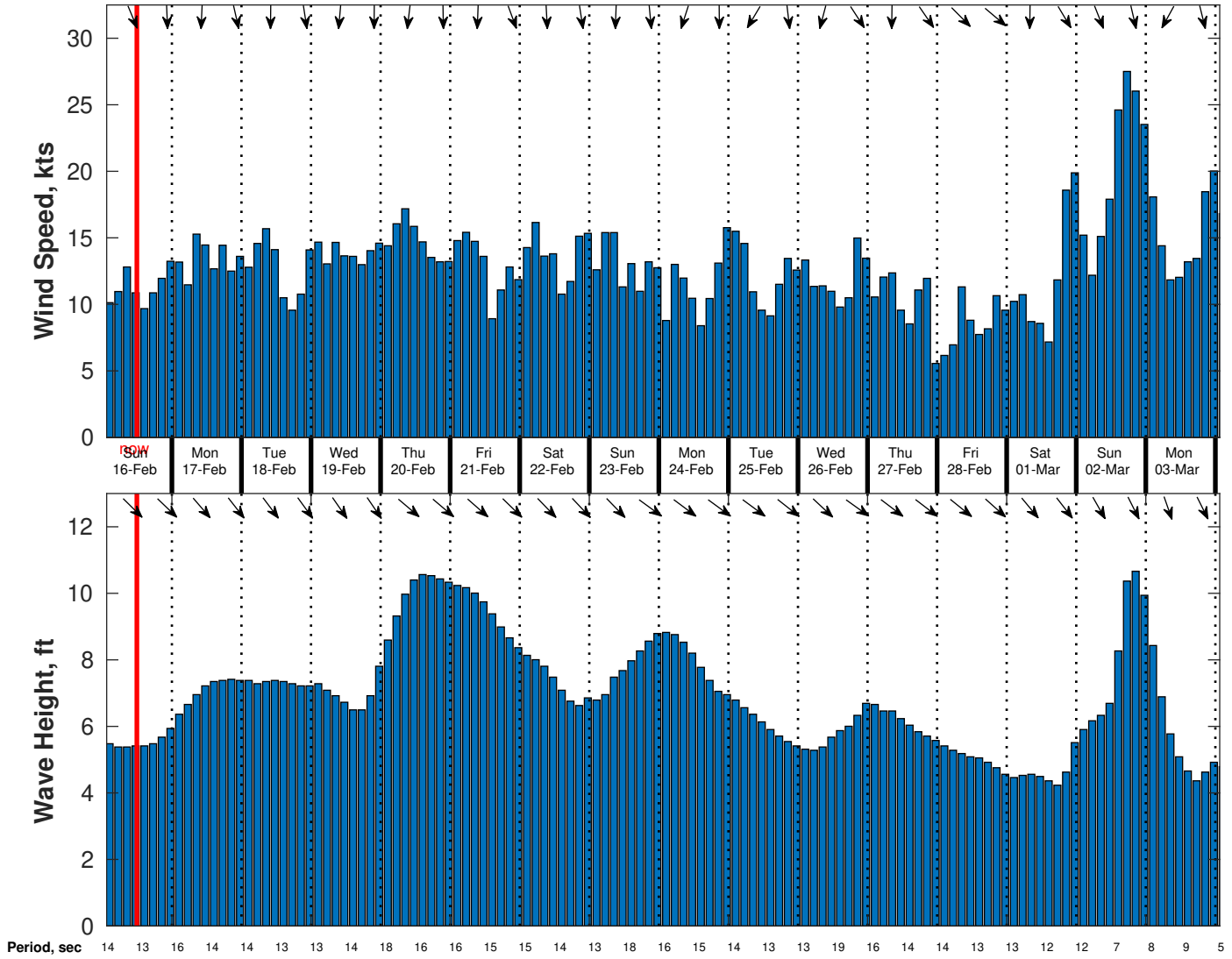
Wednesday

Winds: N, 15-20 kts.
Waves: NW, 10-11 feet, 16-17 sec.
No currents available.

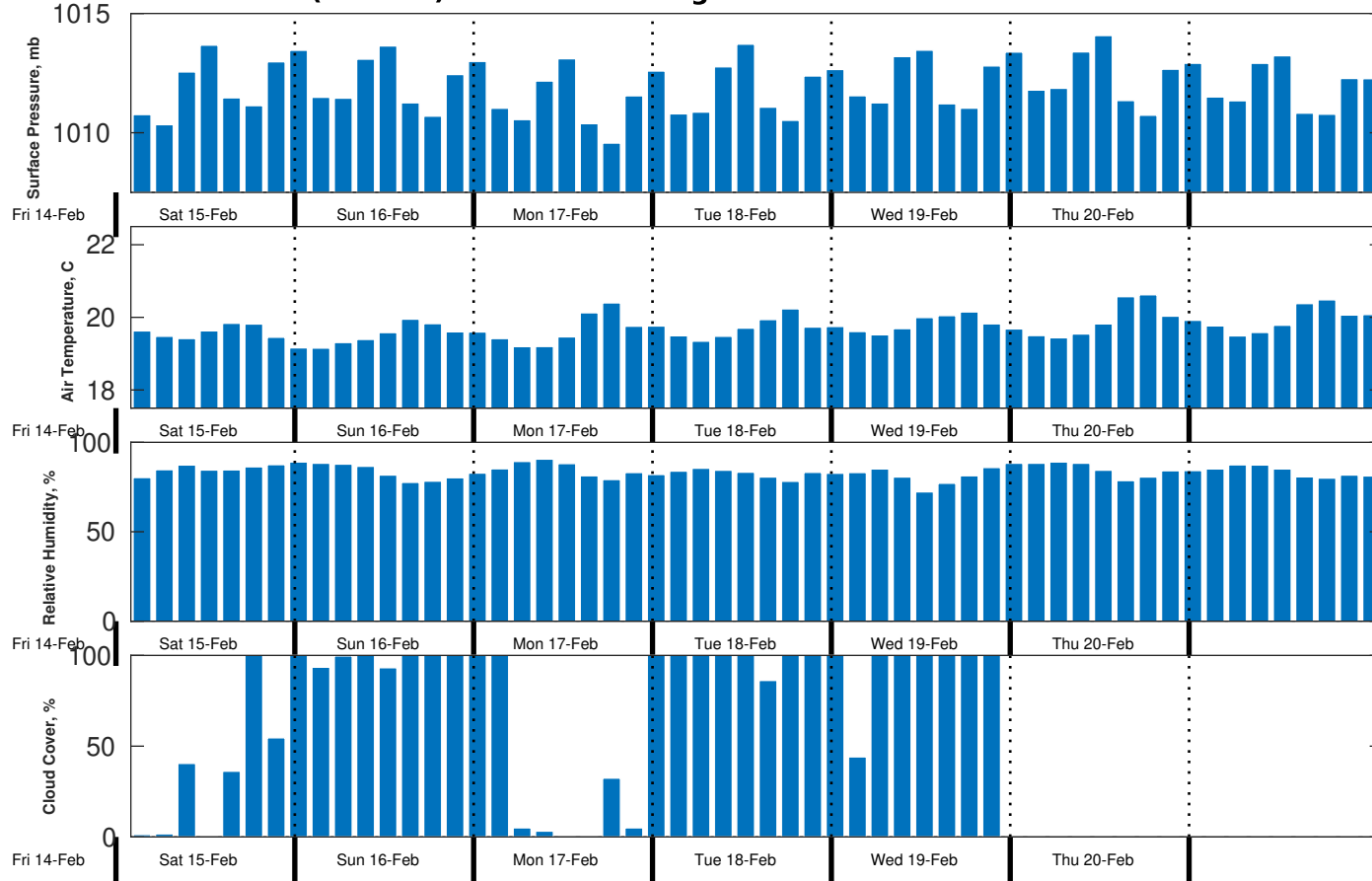
Wednesday Night

Winds: N, 15-20 kts.
Waves: NW, 10-11 feet, 15-16 sec.
No currents available.

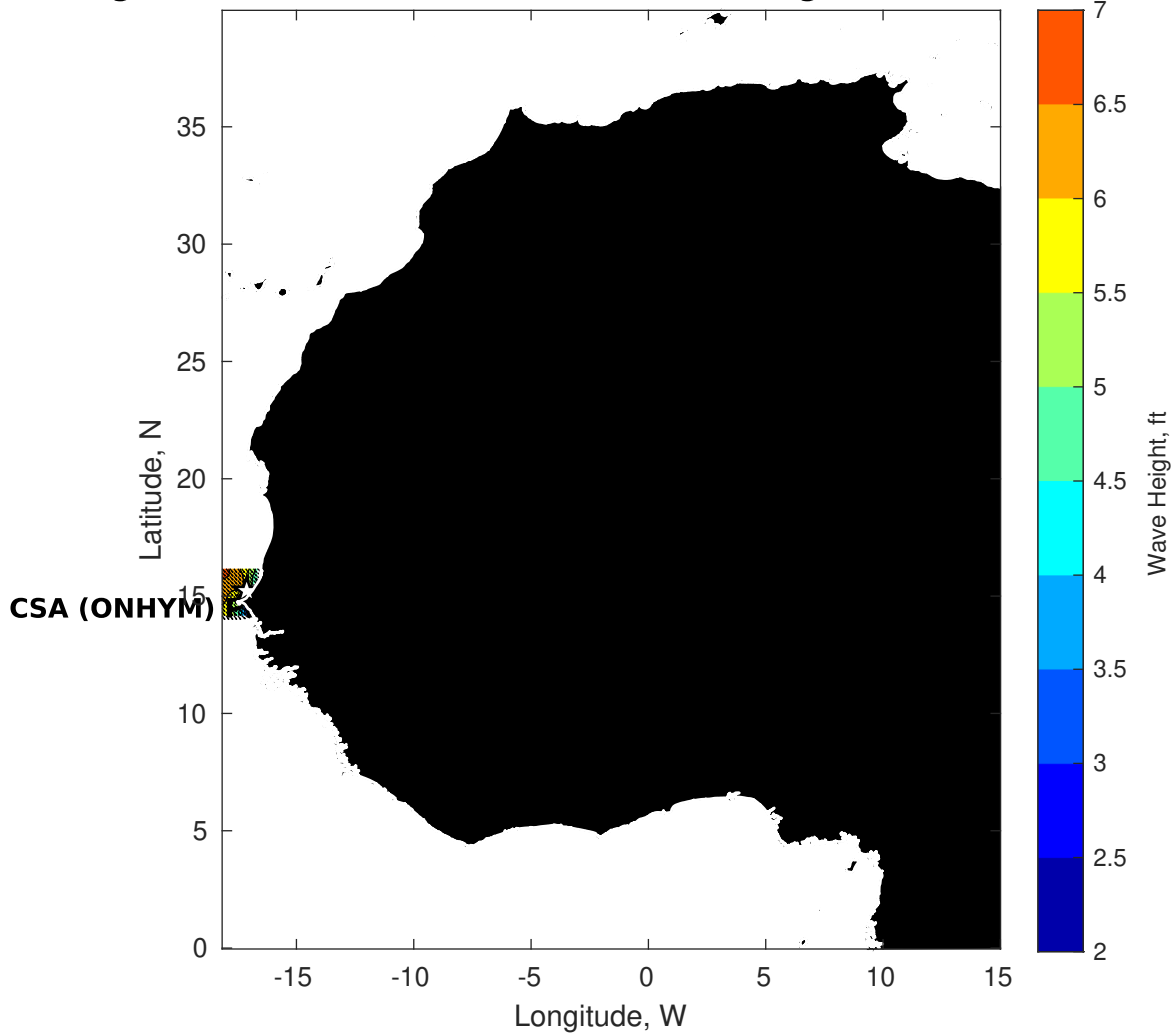
Wind & Wave Forecast for CSA (ONHYM) PPL EBS - Senegal from 15-Feb-2025 01:00:00 to 03-Mar-2025 01:00:00



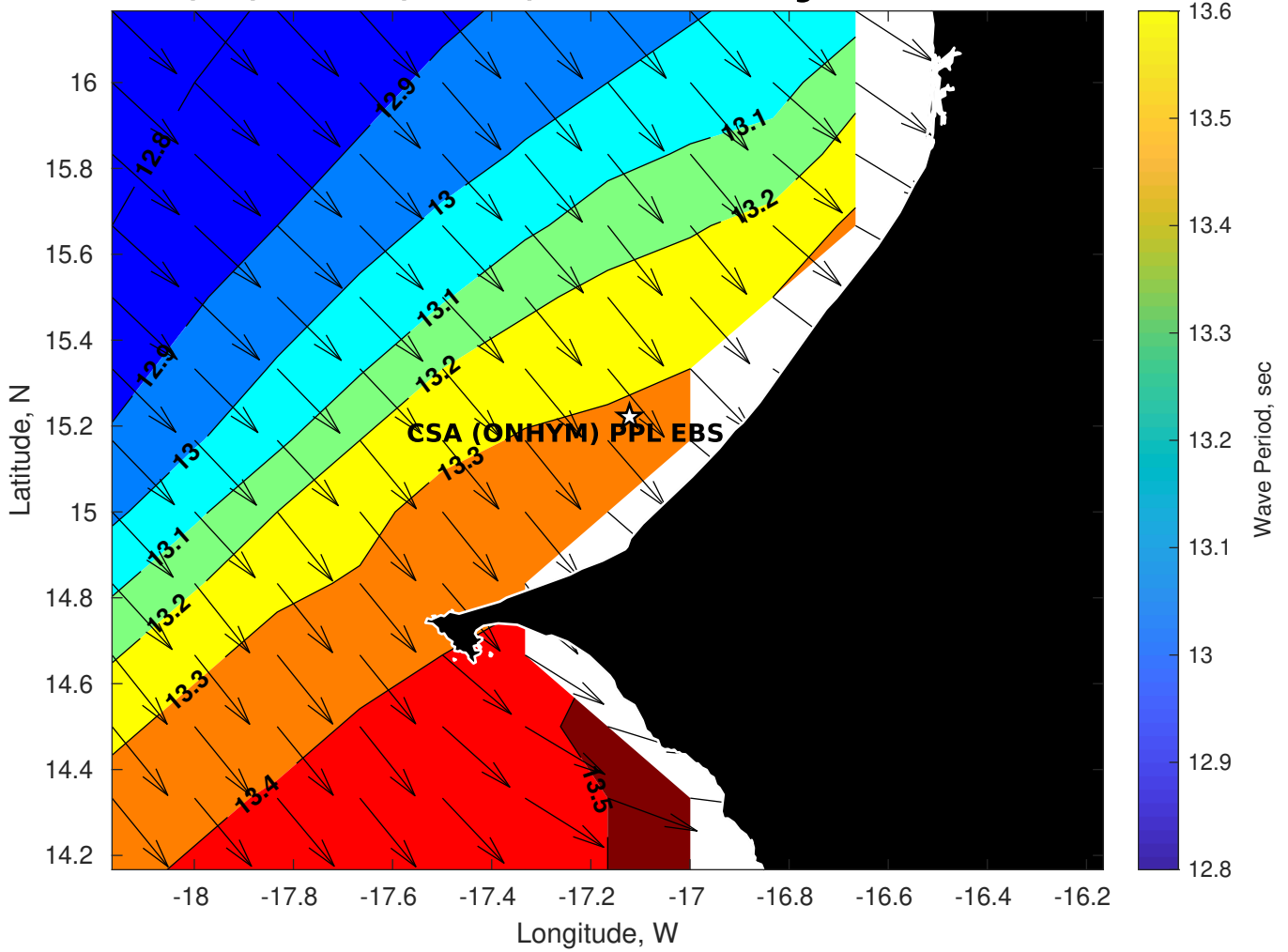
Met Forecast for CSA (ONHYM) PPL EBS - Senegal from 15-Feb-2025 00:00:00 to 22-Feb-2025 00:00:00



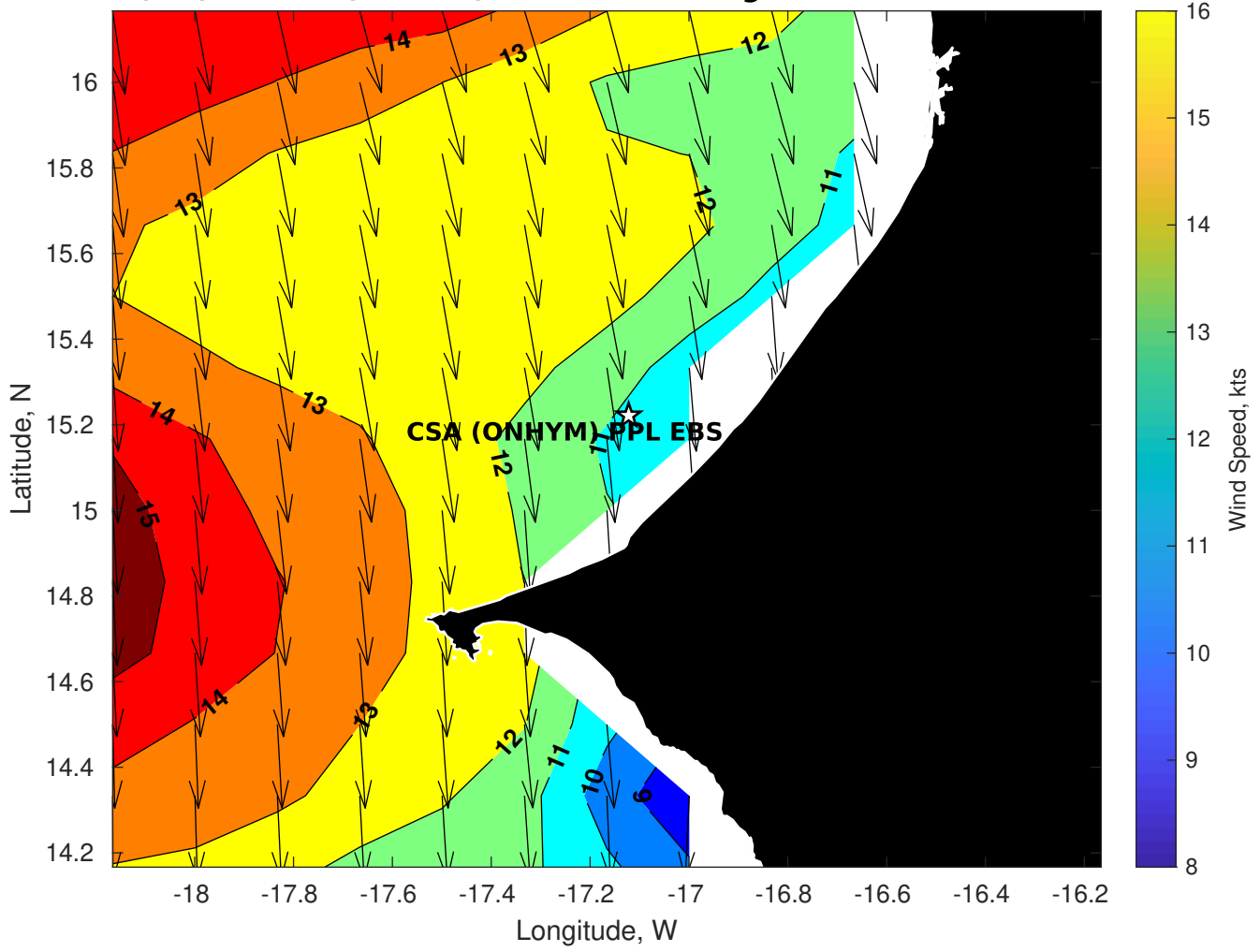
Wave Height (ft) for CSA (ONHYM) PPL EBS - Senegal at 15-Feb-2025 09:00:00



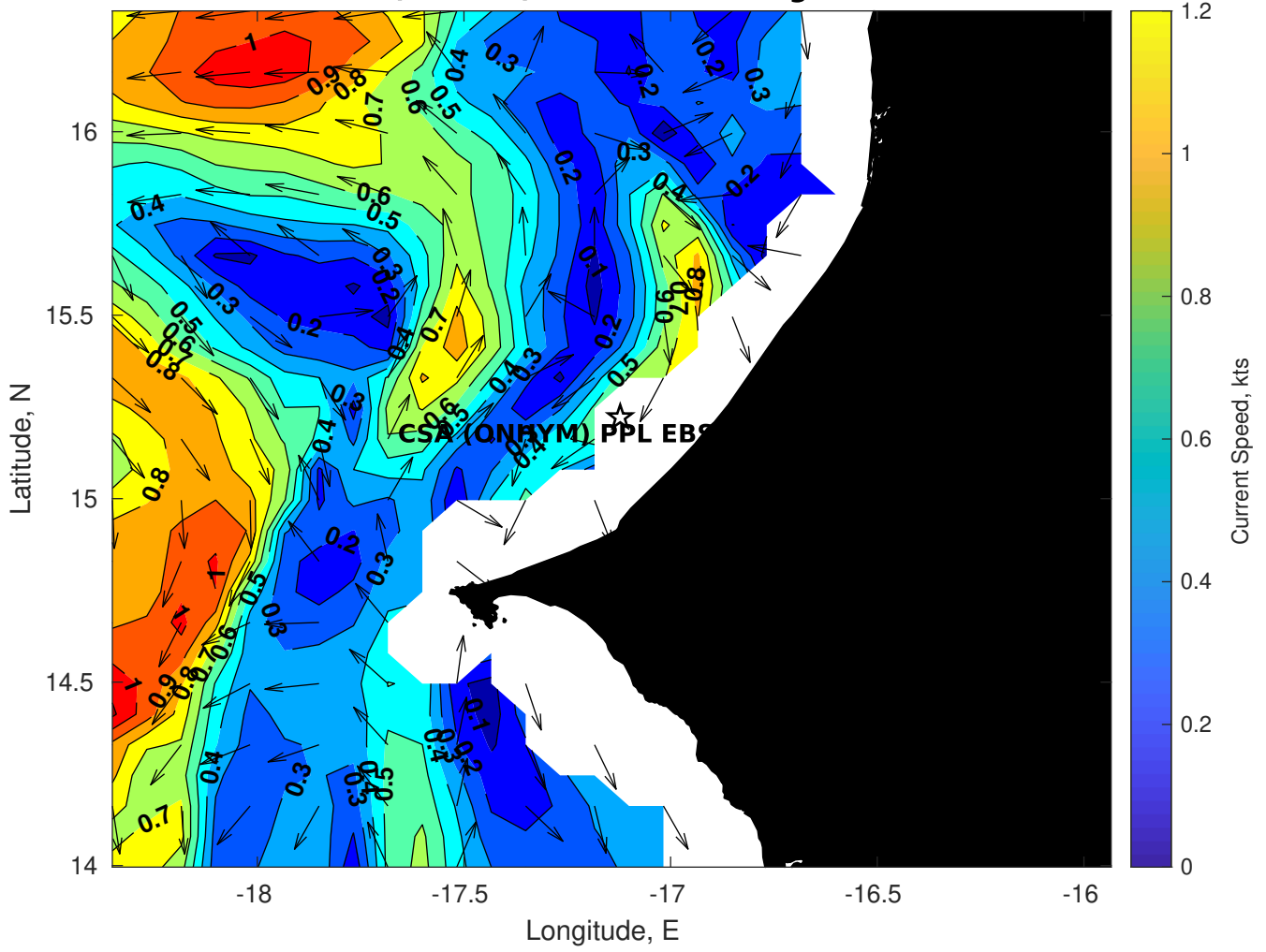
Wave Period (sec) for CSA (ONHYM) PPL EBS - Senegal at 15-Feb-2025 09:00:00



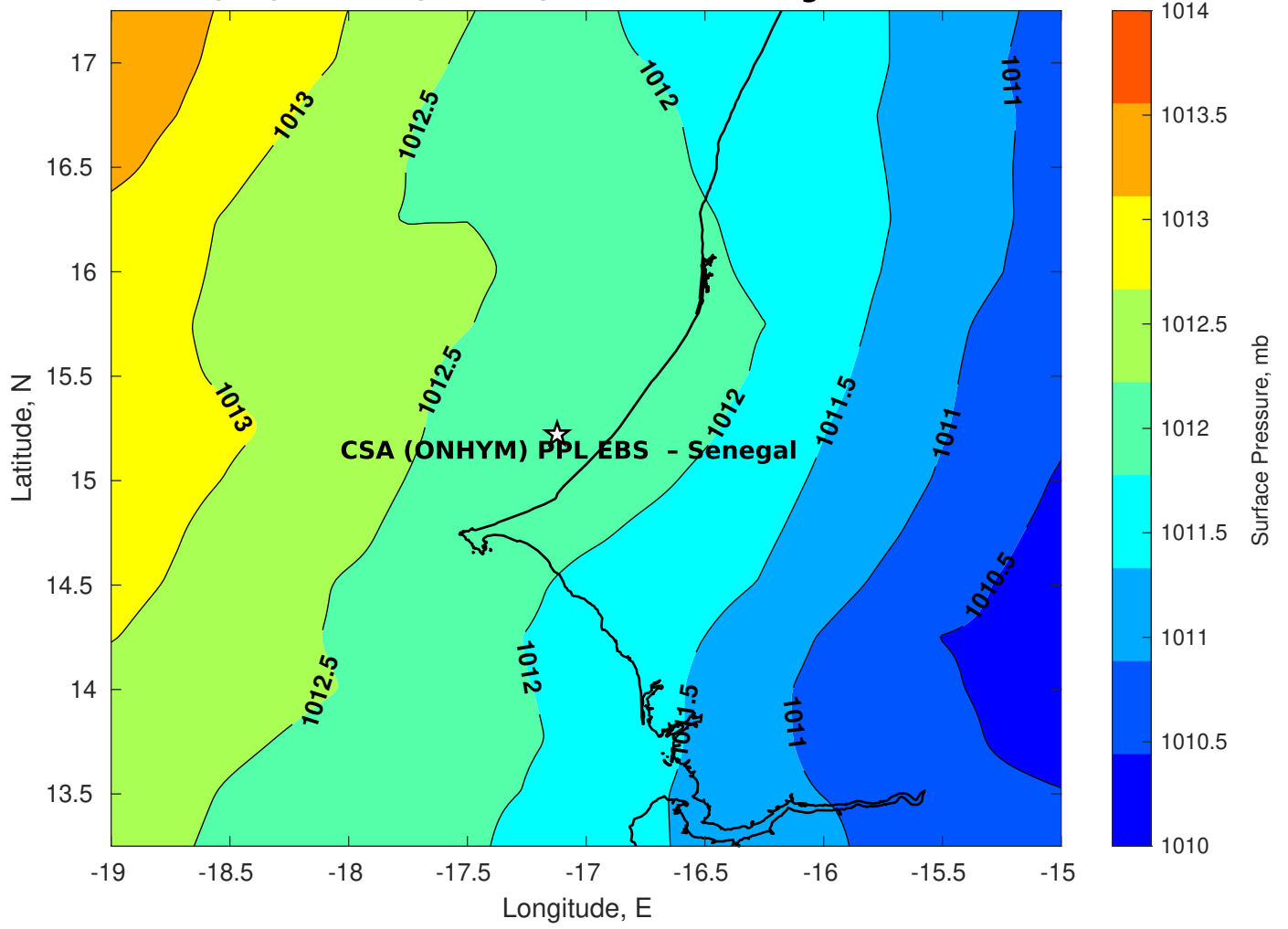
Winds (kts) for CSA (ONHYM) PPL EBS - Senegal at 15-Feb-2025 09:00:00



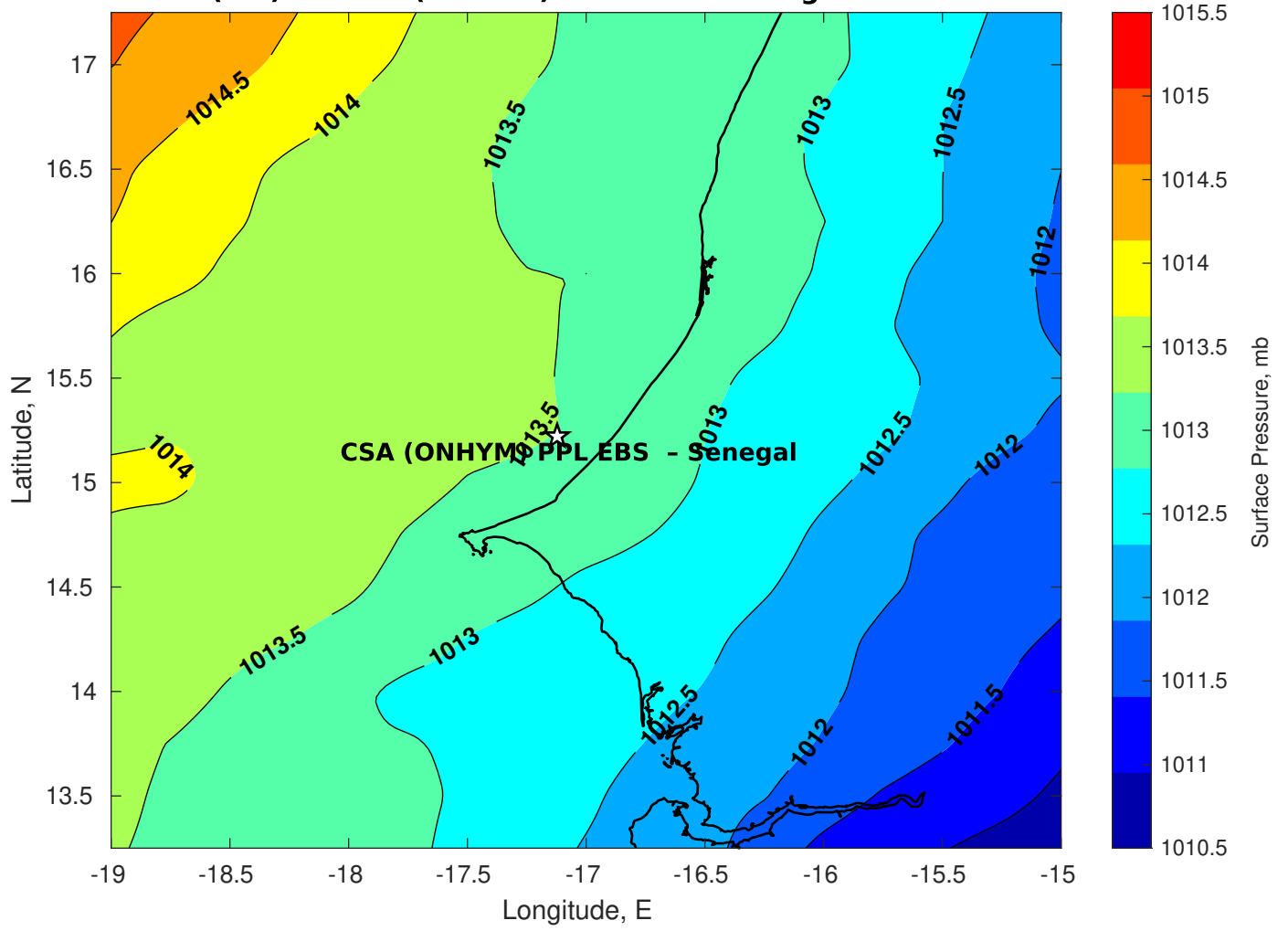
Surface Currents for CSA (ONHYM) PPL EBS - Senegal at 14-Feb-2025 00:00:00



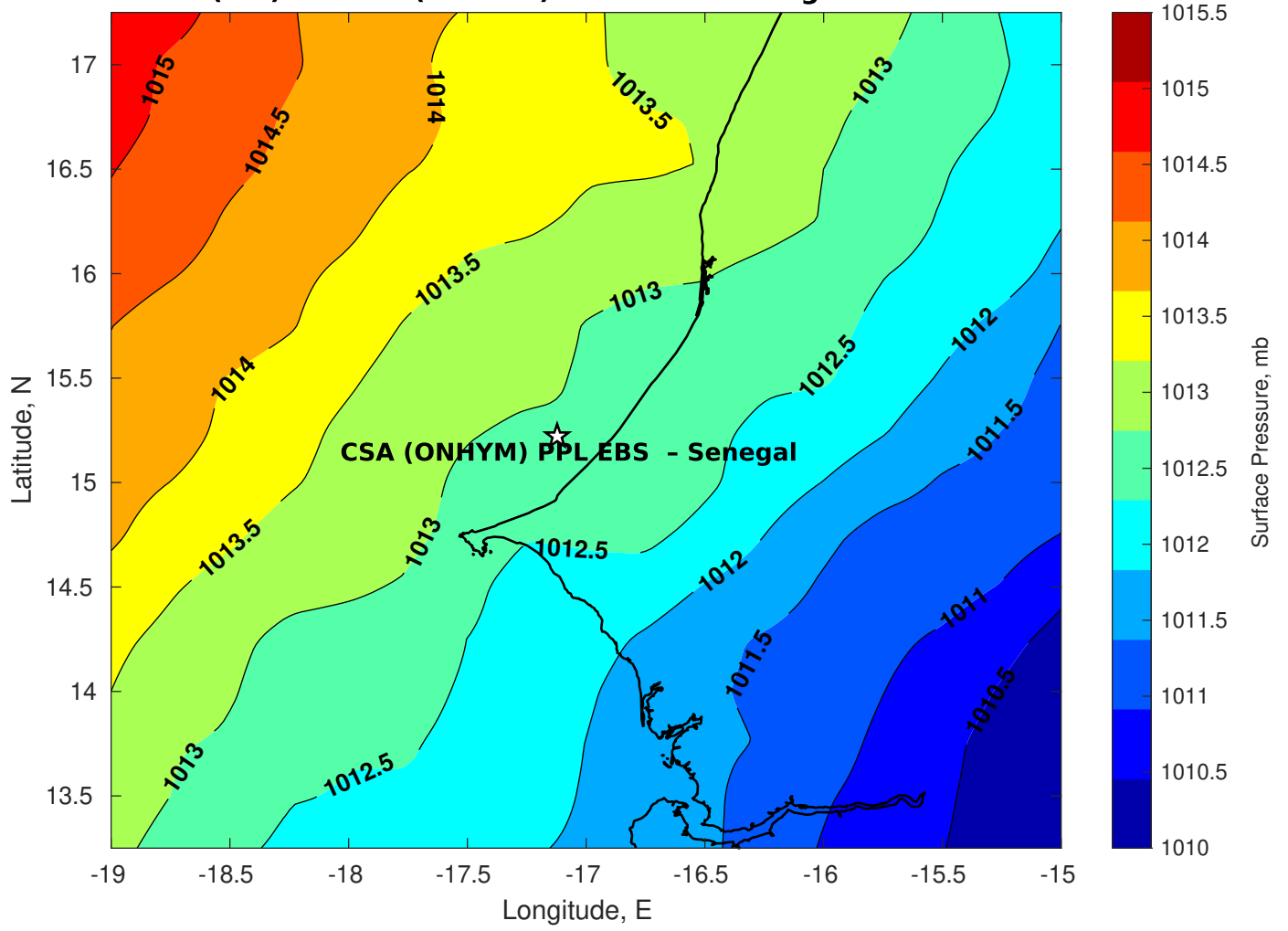
Surface Pressure (mb) for CSA (ONHYM) PPL EBS - Senegal at 15-Feb-2025 00:00:00



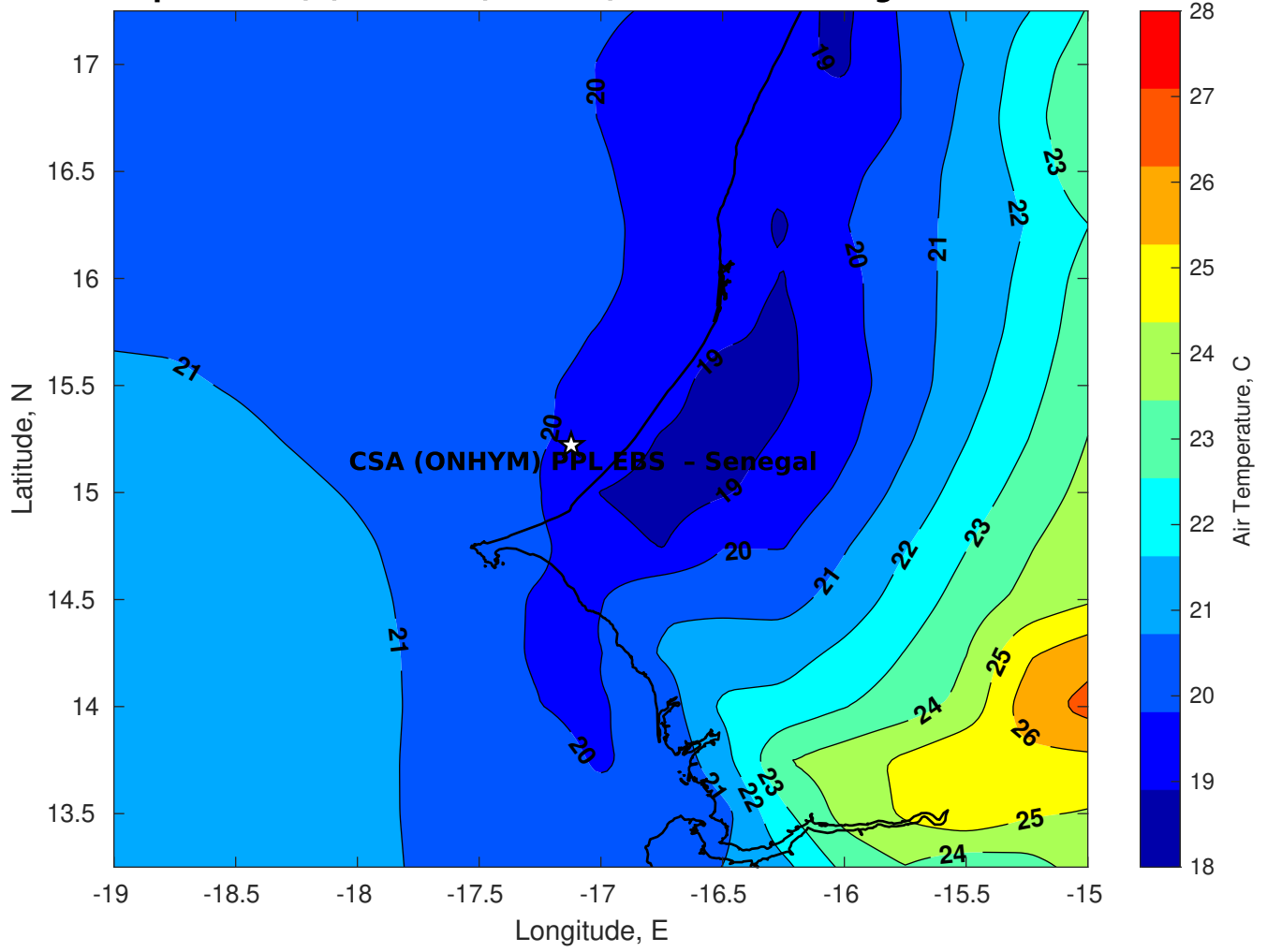
Surface Pressure (mb) for CSA (ONHYM) PPL EBS - Senegal at 16-Feb-2025 00:00:00



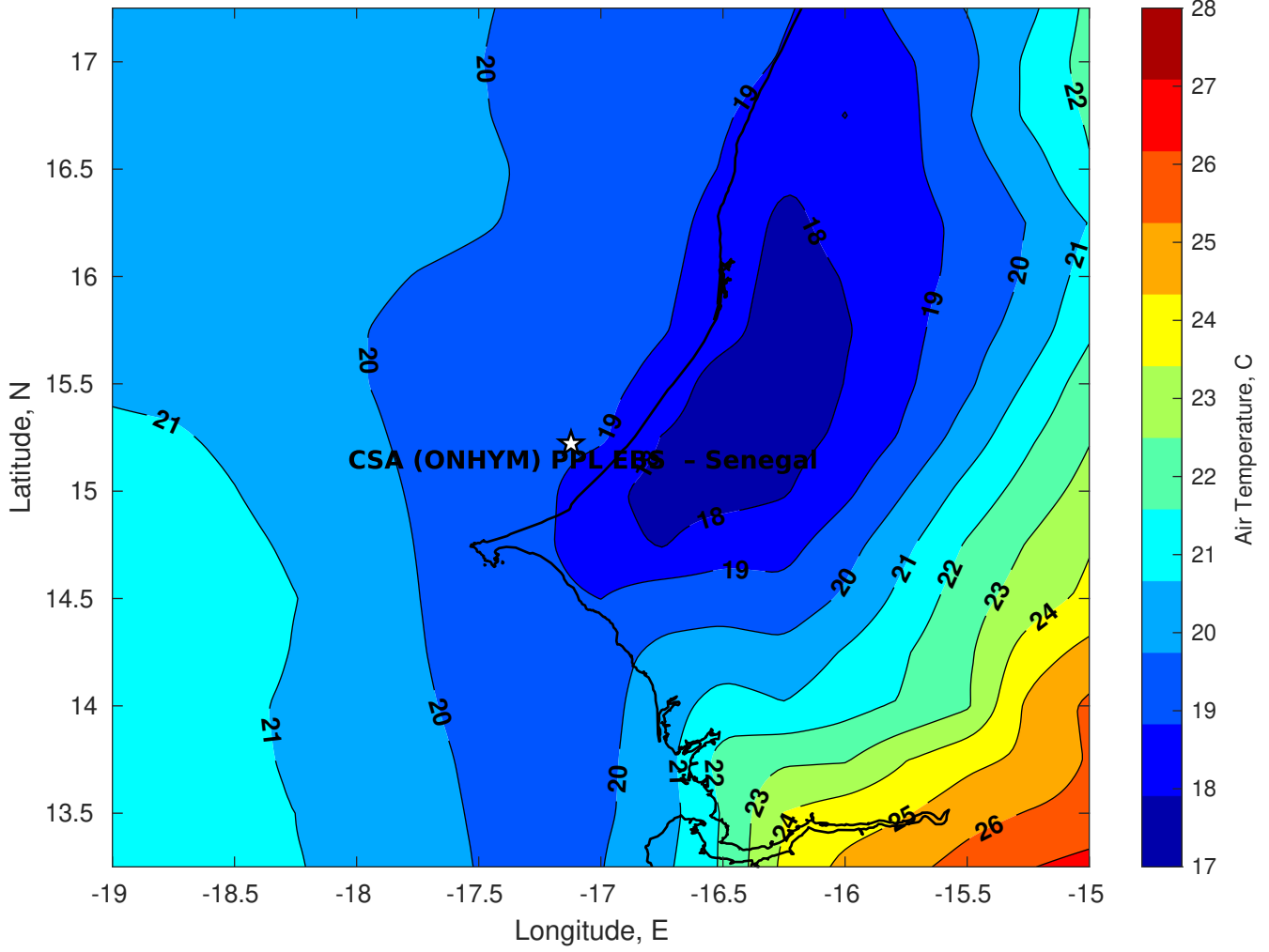
Surface Pressure (mb) for CSA (ONHYM) PPL EBS - Senegal at 17-Feb-2025 00:00:00



Air Temperature (C) for CSA (ONHYM) PPL EBS - Senegal at 15-Feb-2025



Air Temperature (C) for CSA (ONHYM) PPL EBS - Senegal at 15-Feb-2025



Air Temperature (C) for CSA (ONHYM) PPL EBS - Senegal at 15-Feb-2025

