

\*\*\*\*\*

Marine Weather Forecast for Shell Noches GC19 PPL Geotechnical  
Forecast valid as of 16-Feb-2025 0900 GMT

\*\*\*\*\*

All times are local.

Today

Winds: W, 25-30 kts.

Waves: N, 8-9 feet, 7-8 sec.

No currents available.

Tonight

Winds: NE, 15-20 kts.

Waves: NE, 5-6 feet, 6-7 sec.

No currents available.

Sunday

Winds: N, 25-30 kts.

Waves: N, 7-8 feet, 7-8 sec.

No currents available.

Monday Night

Winds: NE, 10-15 kts.

Waves: NE, 2-3 feet, 6-7 sec.

No currents available.

Monday

Winds: E, 15-20 kts.

Waves: NE, 3-4 feet, 6-7 sec.

No currents available.

Tuesday Night

Winds: NE, 20-25 kts.

Waves: NE, 6-7 feet, 6-7 sec.

No currents available.

Tuesday

Winds: E, 20-25 kts.

Waves: NE, 5-6 feet, 5-6 sec.

No currents available.

Wednesday Night

Winds: NE, 20-25 kts.

Waves: E, 5-6 feet, 6-7 sec.

No currents available.

Wednesday

Winds: N, 20-25 kts.

Waves: NE, 6-7 feet, 6-7 sec.

No currents available.

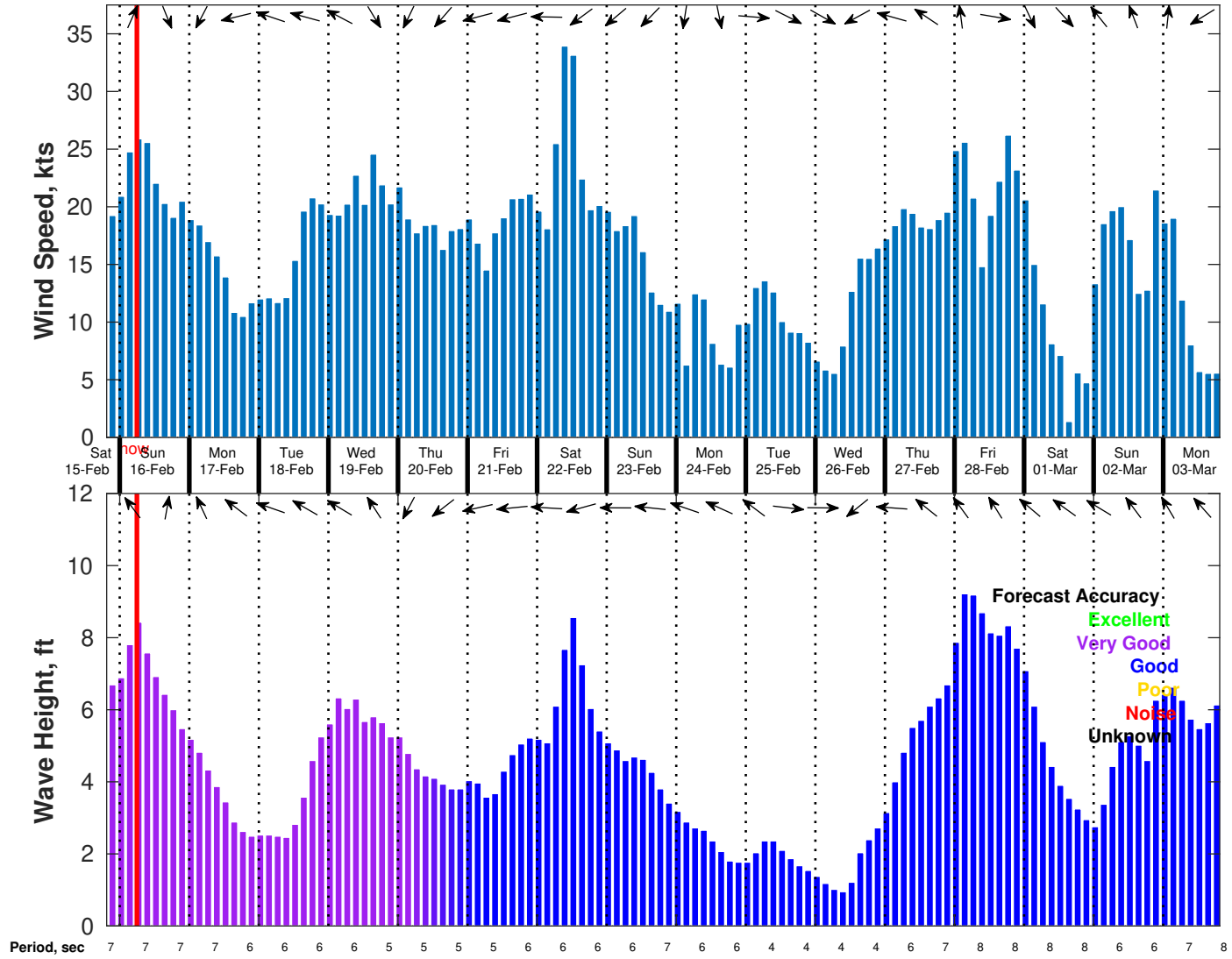
Thursday Night

Winds: E, 15-20 kts.

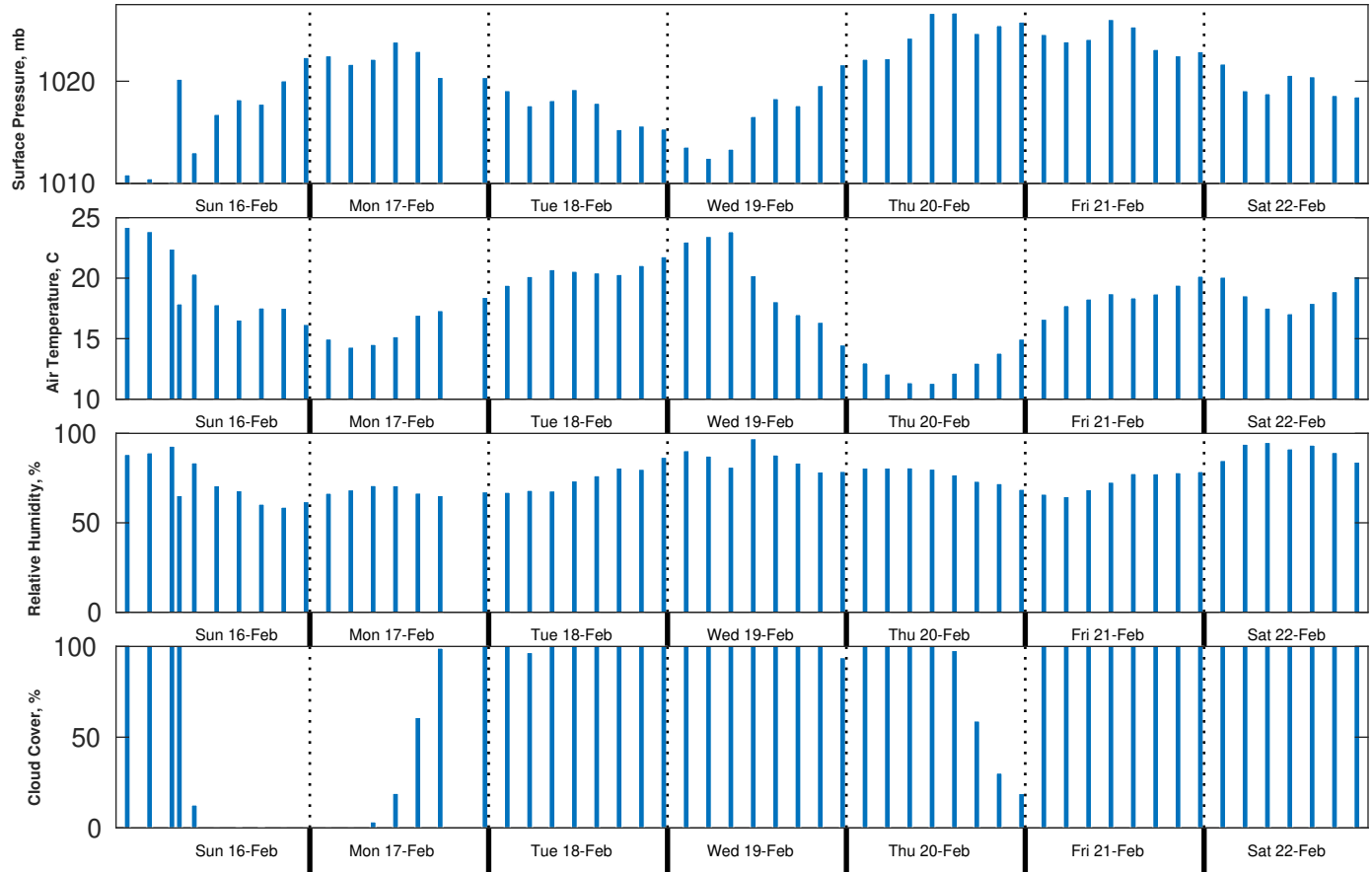
Waves: E, 4-5 feet, 5-6 sec.

No currents available.

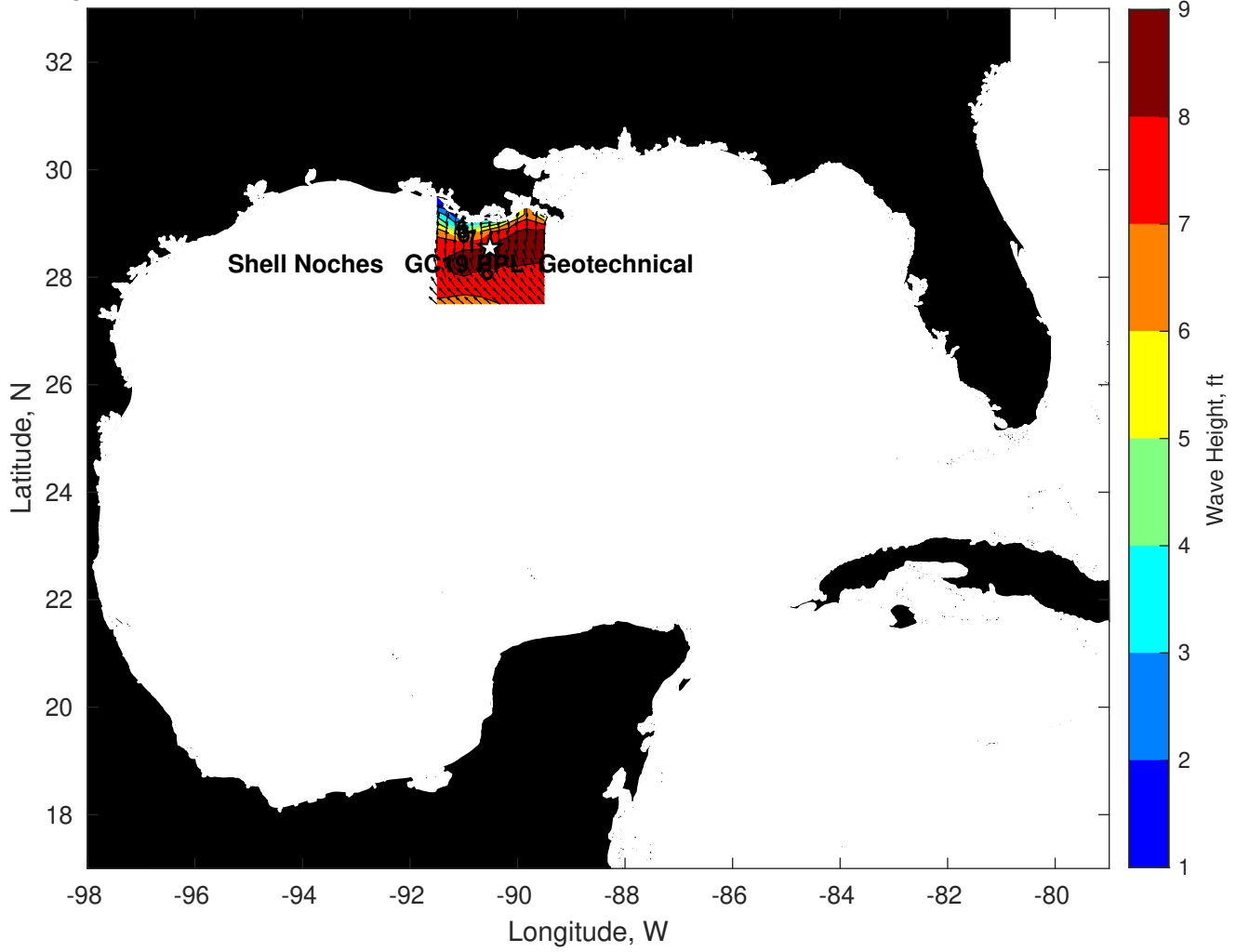
Wind & Wave Forecast for Shell Noches GC19 PPL Geotechnical from 15-Feb-2025 20:00:00 to 03-Mar-2025 20:00:00



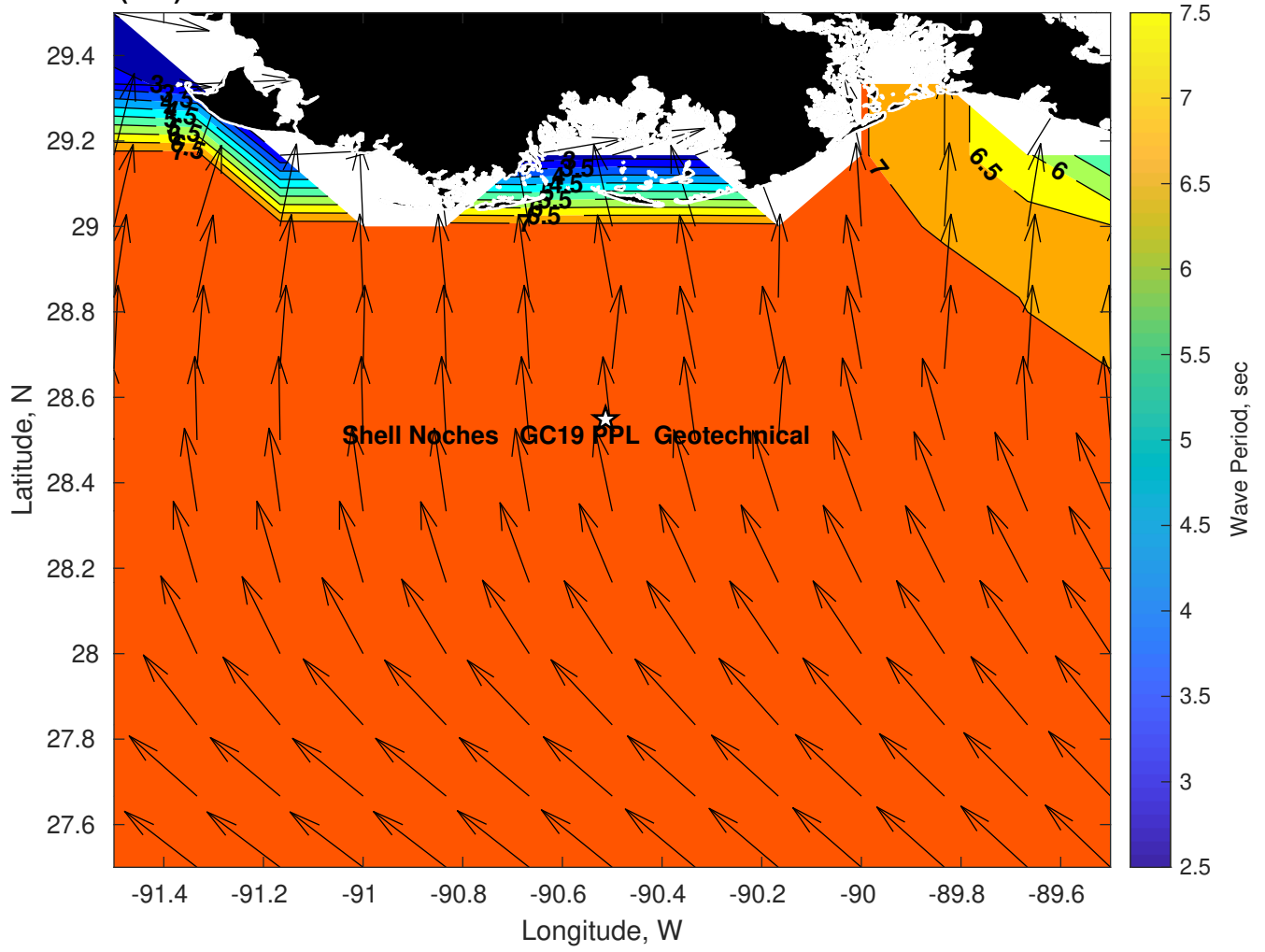
Met Forecast for Shell Noches GC19 PPL Geotechnical from 16-Feb-2025 00:00:00 to 23-Feb-2025 00:00:00



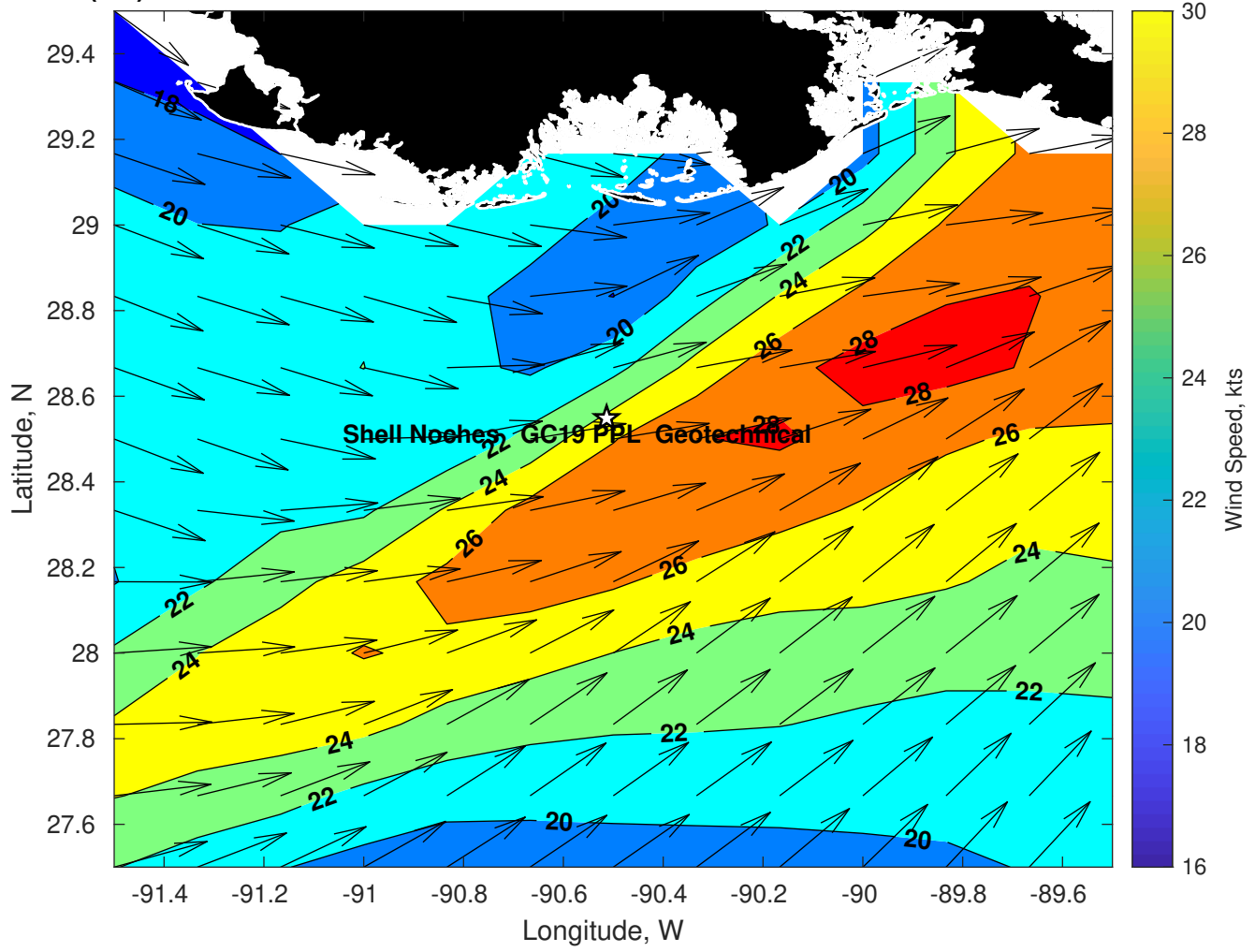
Wave Height (ft) for Shell Noches GC19 PPL Geotechnical at 16-Feb-2025 09:00:00



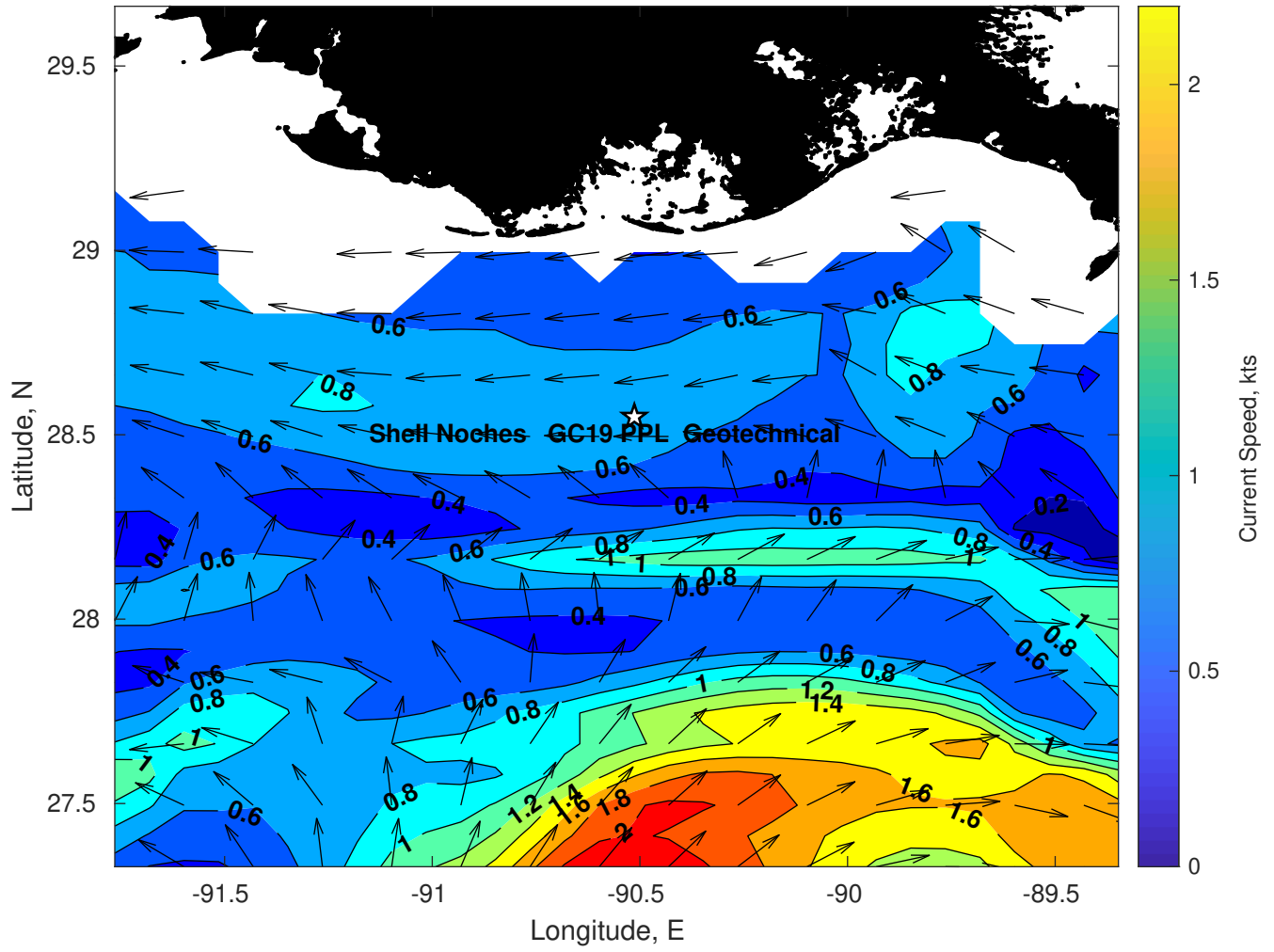
Wave Period (sec) for Shell Noches GC19 PPL Geotechnical at 16-Feb-2025 09:00:00



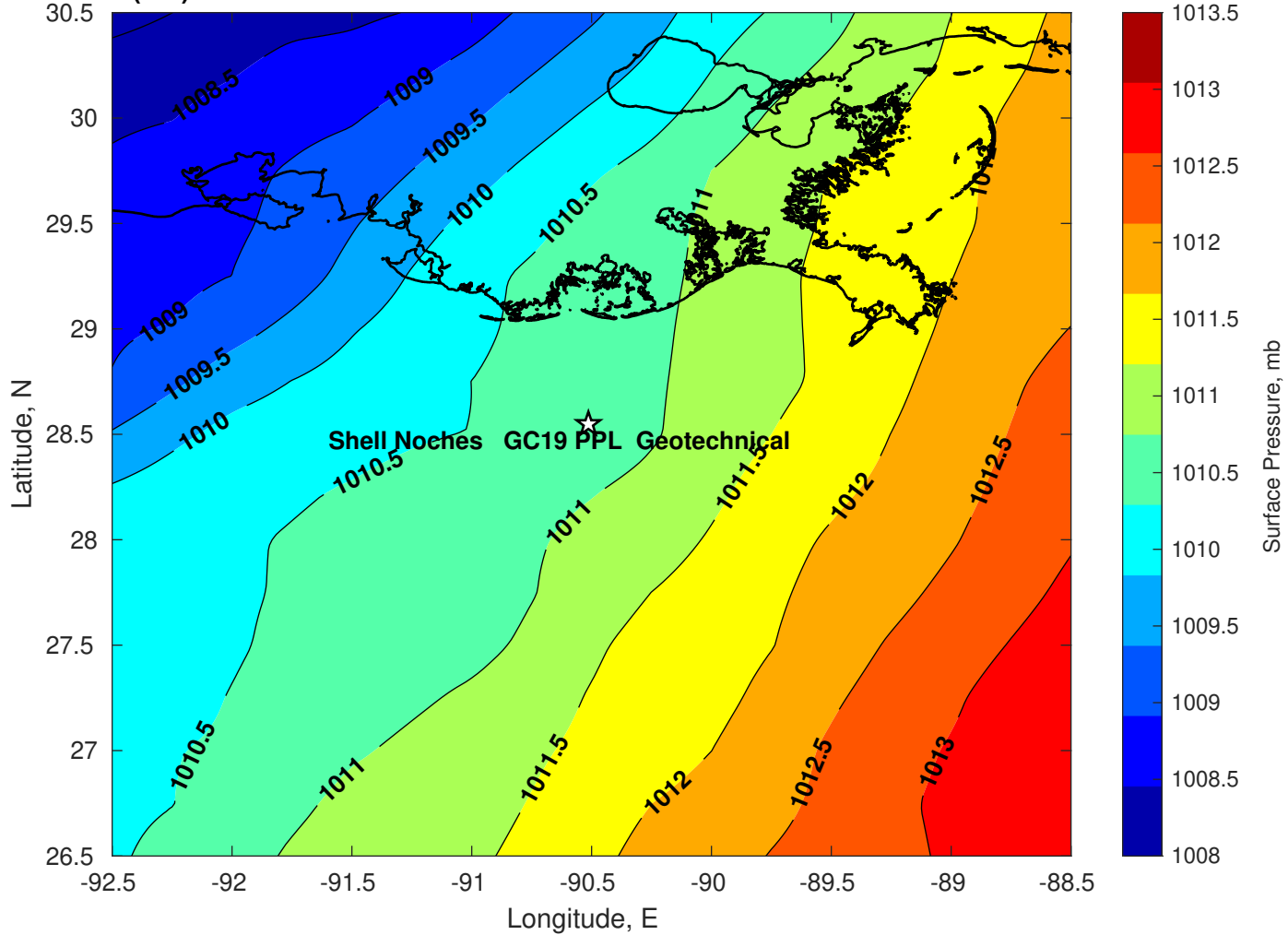
Winds (kts) for Shell Noches GC19 PPL Geotechnical at 16-Feb-2025 09:00:00



Surface Currents for Shell Noches GC19 PPL Geotechnical at 15-Feb-2025 00:00:00

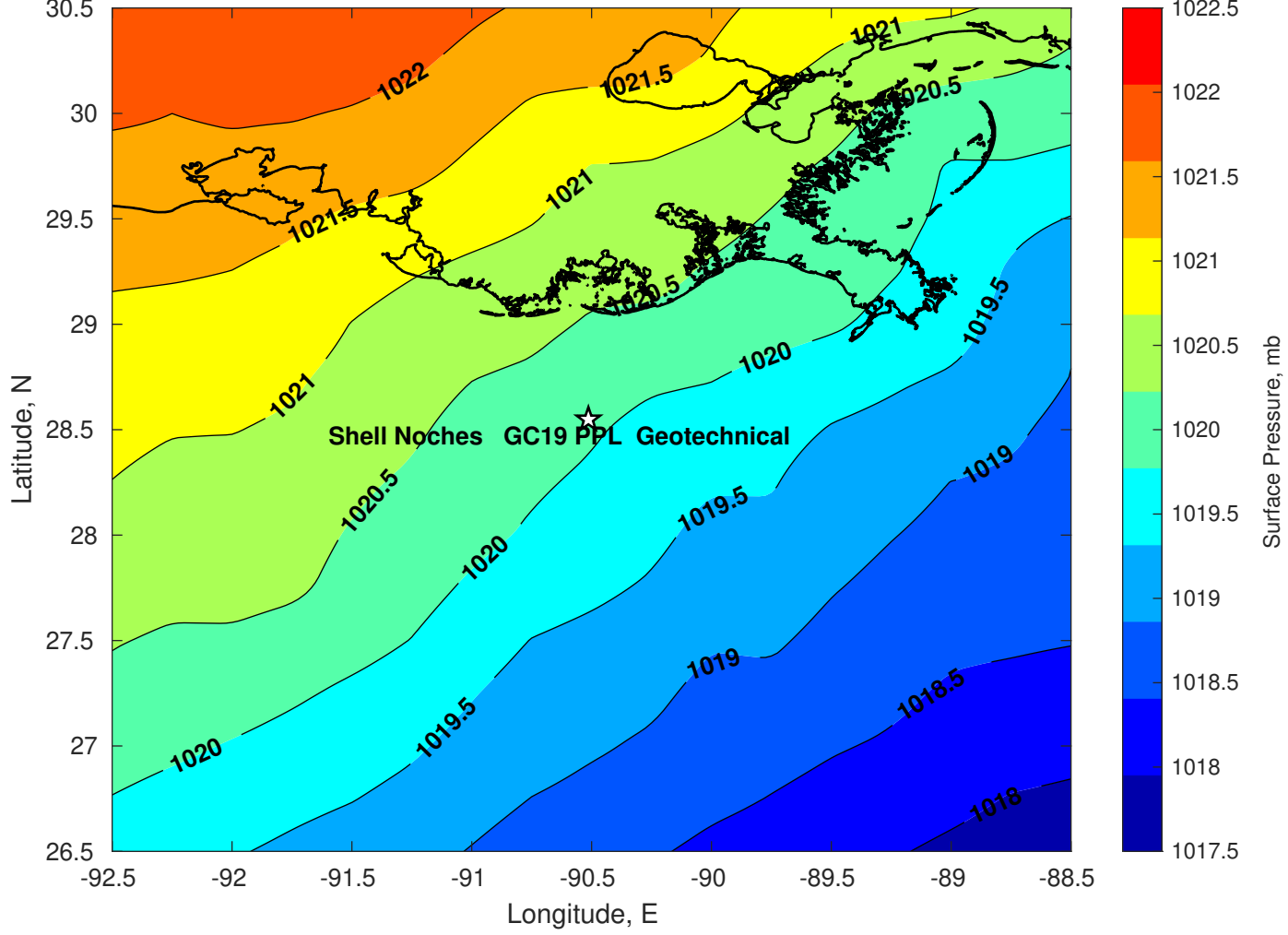


Surface Pressure (mb) for Shell Noches GC19 PPL Geotechnical at 16-Feb-2025 00:00:00

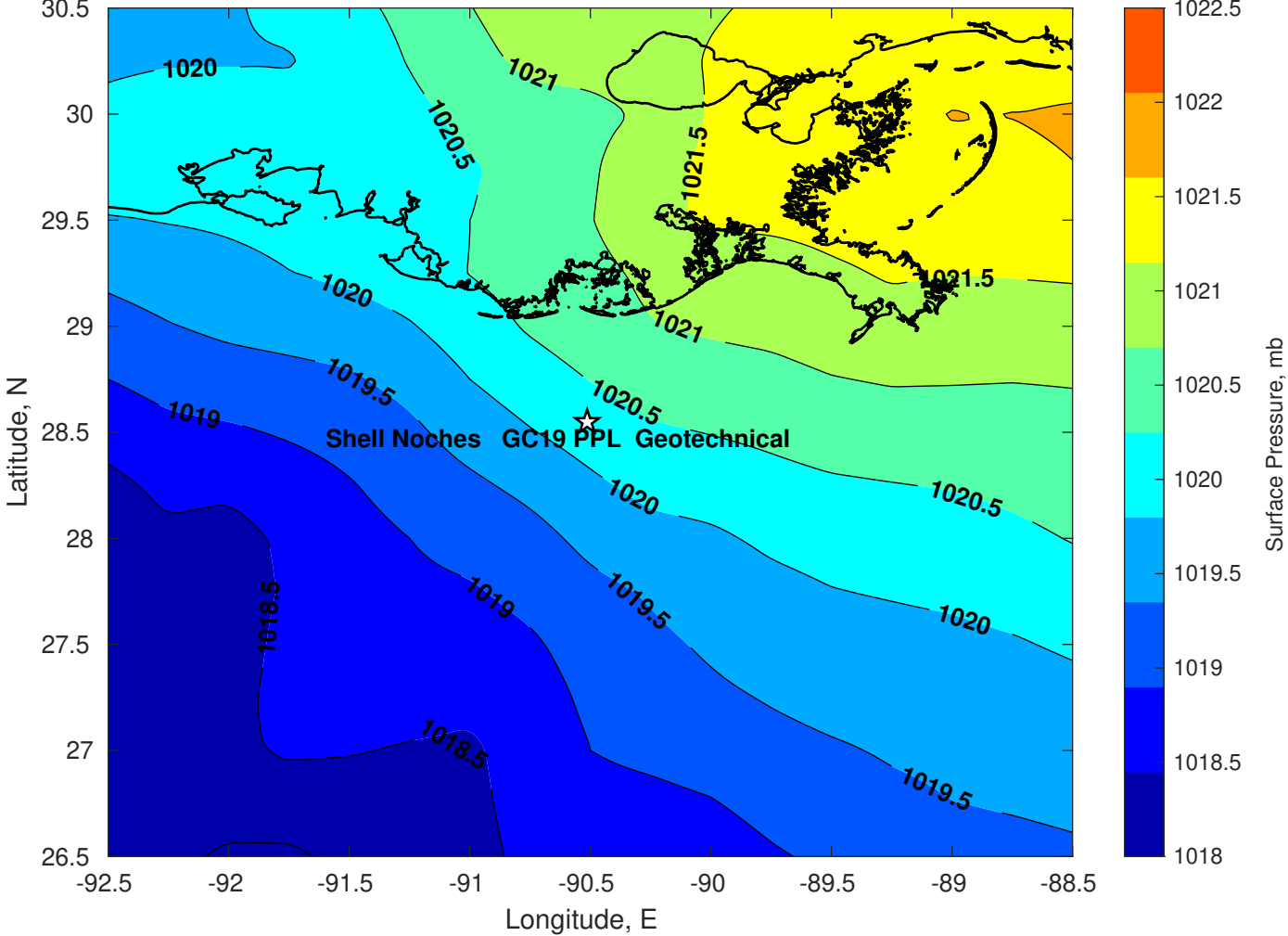




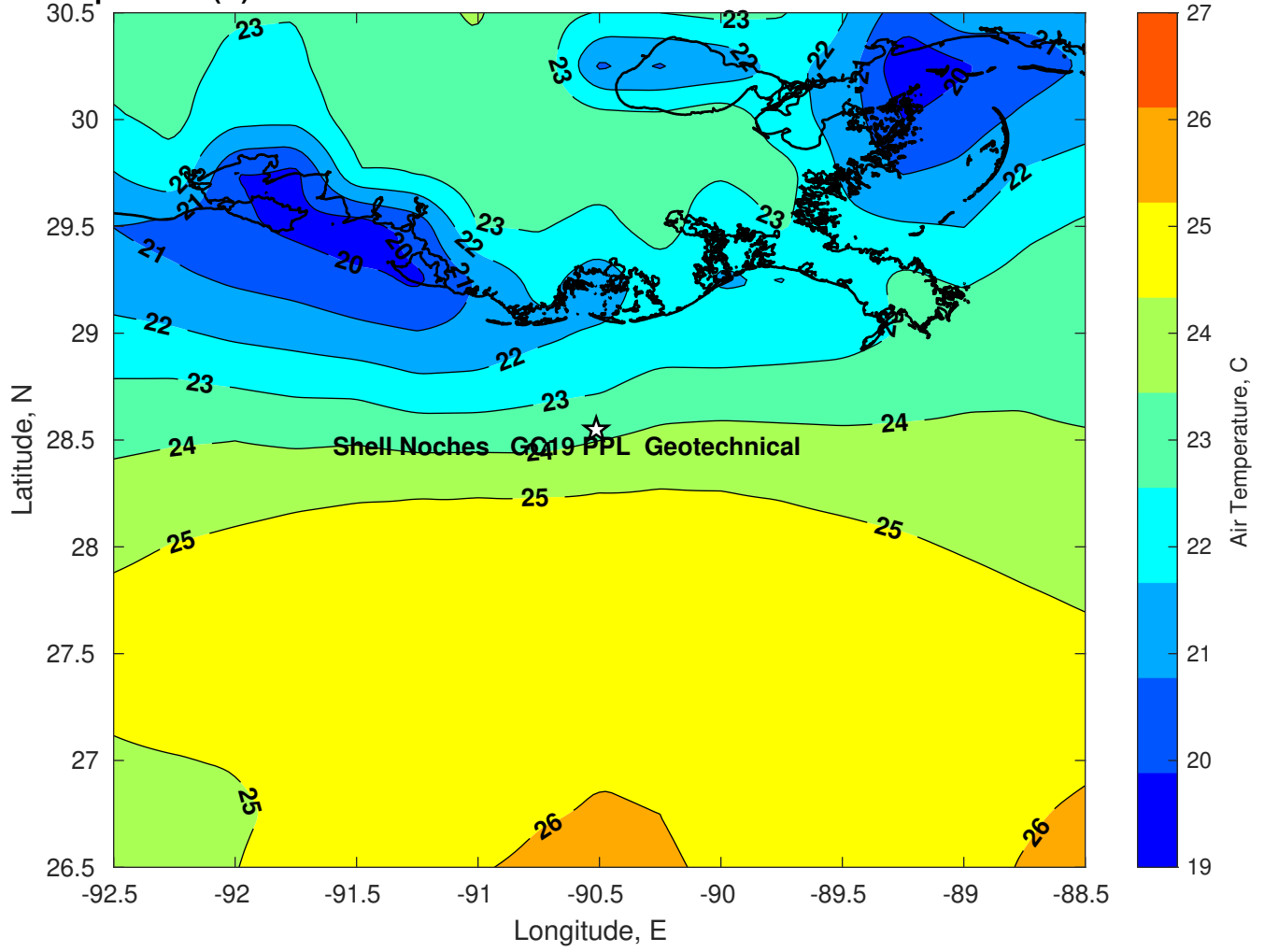
Surface Pressure (mb) for Shell Noches GC19 PPL Geotechnical at 17-Feb-2025 00:00:00



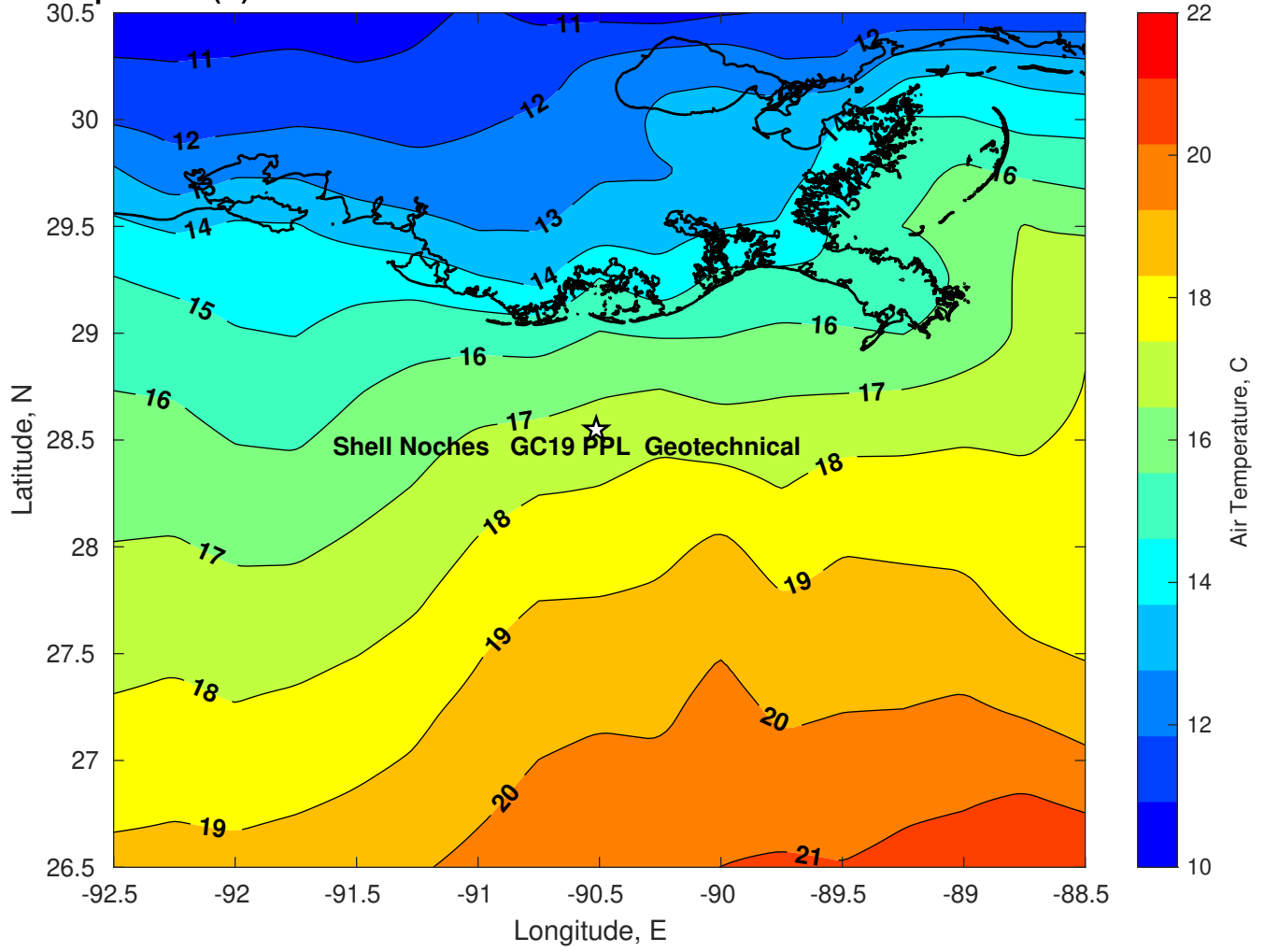
Surface Pressure (mb) for Shell Noches GC19 PPL Geotechnical at 16-Feb-2025 10:00:00



**Air Temperature (C) for Shell Noches GC19 PPL Geotechnical at 16-Feb-2025**



Air Temperature (C) for Shell Noches GC19 PPL Geotechnical at 16-Feb-2025



Air Temperature (C) for Shell Noches GC19 PPL Geotechnical at 16-Feb-2025

