

\*\*\*\*\*

Marine Weather Forecast for CSA (ONHYM) PPL EBS - Cote d'Ivoire  
Forecast valid as of 17-Feb-2025 0900 GMT

\*\*\*\*\*

All times are local.

Today

Winds: NW, 10-15 kts.  
Waves: N, 3-4 feet, 18-19 sec.  
No currents available.

Tonight

Winds: NW, 10-15 kts.  
Waves: N, 3-4 feet, 17-18 sec.  
No currents available.

Tuesday

Winds: NW, 15-20 kts.  
Waves: N, 3-4 feet, 16-17 sec.  
No currents available.

Tuesday Night

Winds: NW, 10-15 kts.  
Waves: N, 4-5 feet, 15-16 sec.  
No currents available.

Wednesday

Winds: NW, 10-15 kts.  
Waves: N, 4-5 feet, 14-15 sec.  
No currents available.

Wednesday Night

Winds: NW, 10-15 kts.  
Waves: N, 3-4 feet, 14-15 sec.  
No currents available.

Thursday

Winds: N, 10-15 kts.  
Waves: N, 3-4 feet, 13-14 sec.  
No currents available.

Thursday Night

Winds: NW, 10-15 kts.  
Waves: N, 3-4 feet, 12-13 sec.  
No currents available.

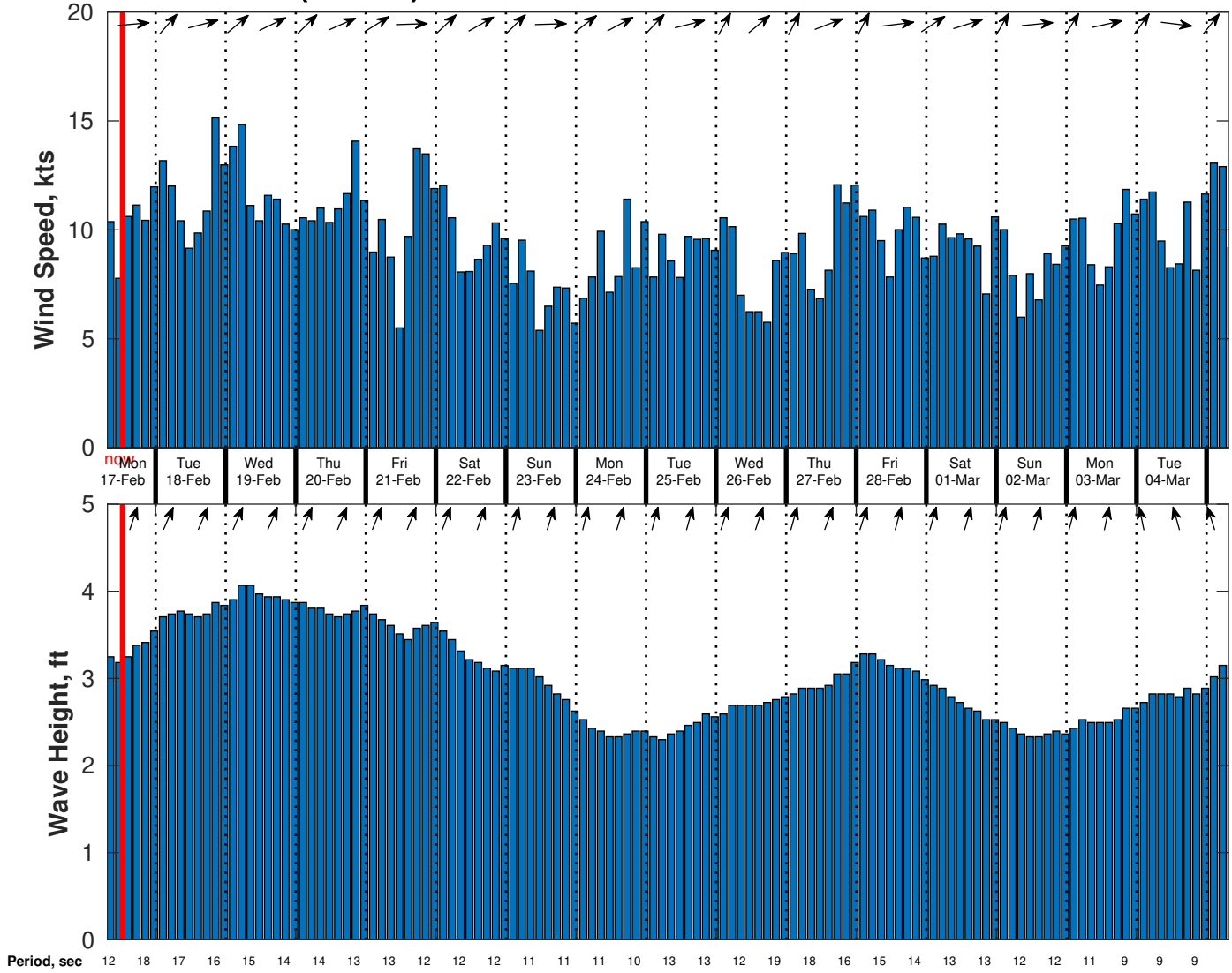
Friday

Winds: NW, 10-15 kts.  
Waves: N, 3-4 feet, 12-13 sec.  
No currents available.

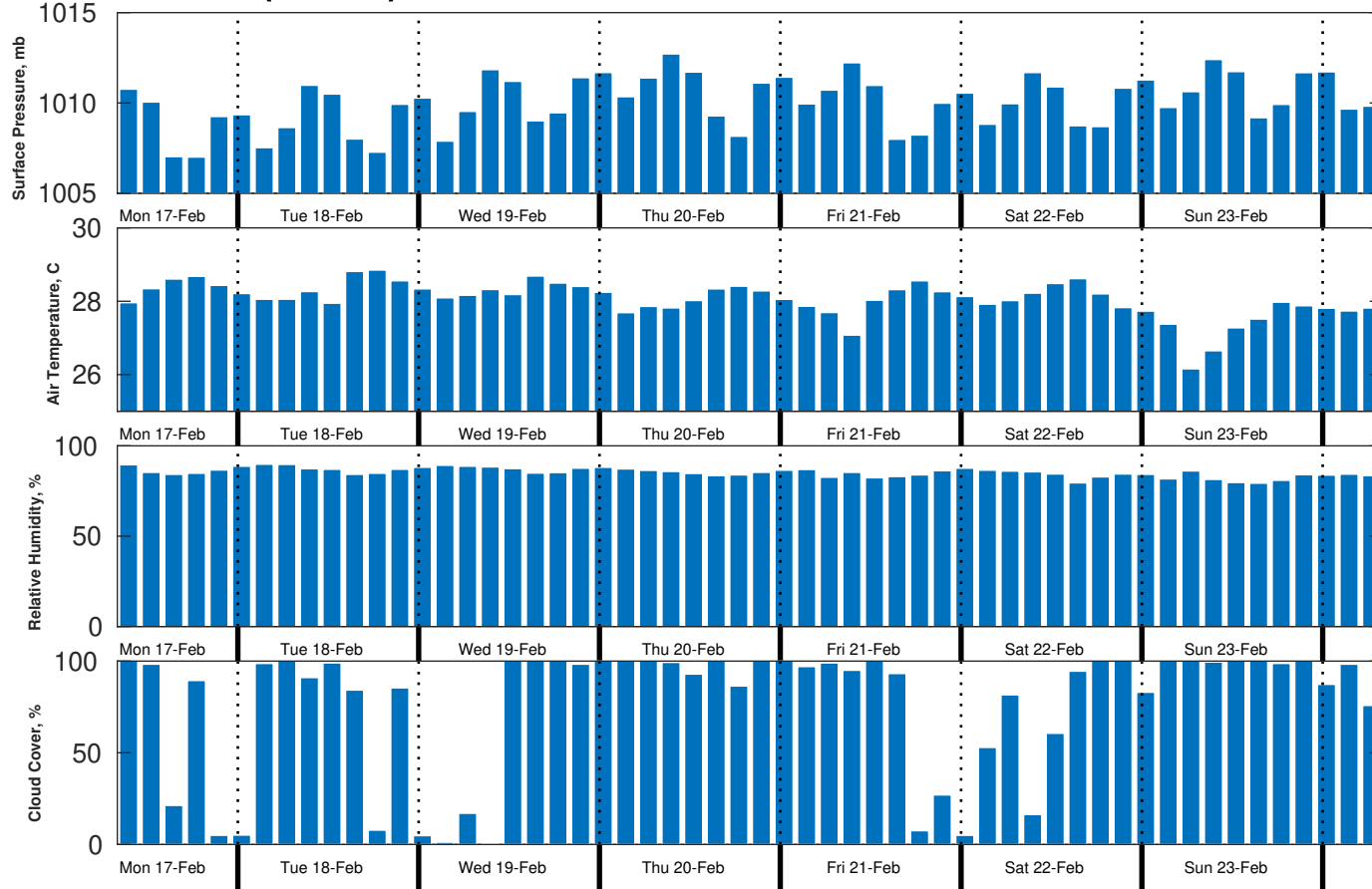
Friday Night

Winds: NW, 10-15 kts.  
Waves: N, 3-4 feet, 11-12 sec.  
No currents available.

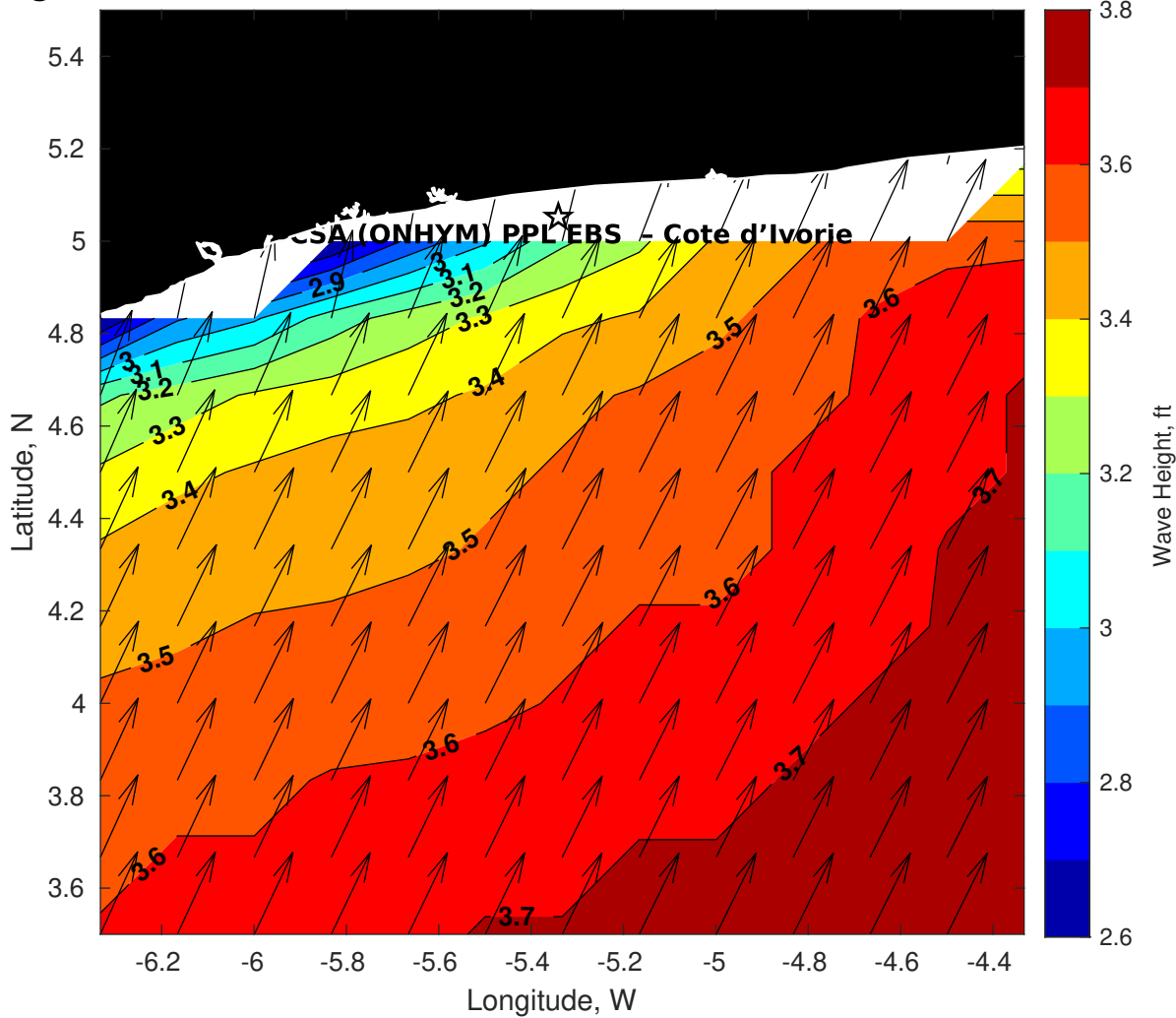
**Wind & Wave Forecast for CSA (ONHYM) PPL EBS - Cote d'Ivoire from 17-Feb-2025 07:00:00 to 05-Mar-2025 07:00:00**



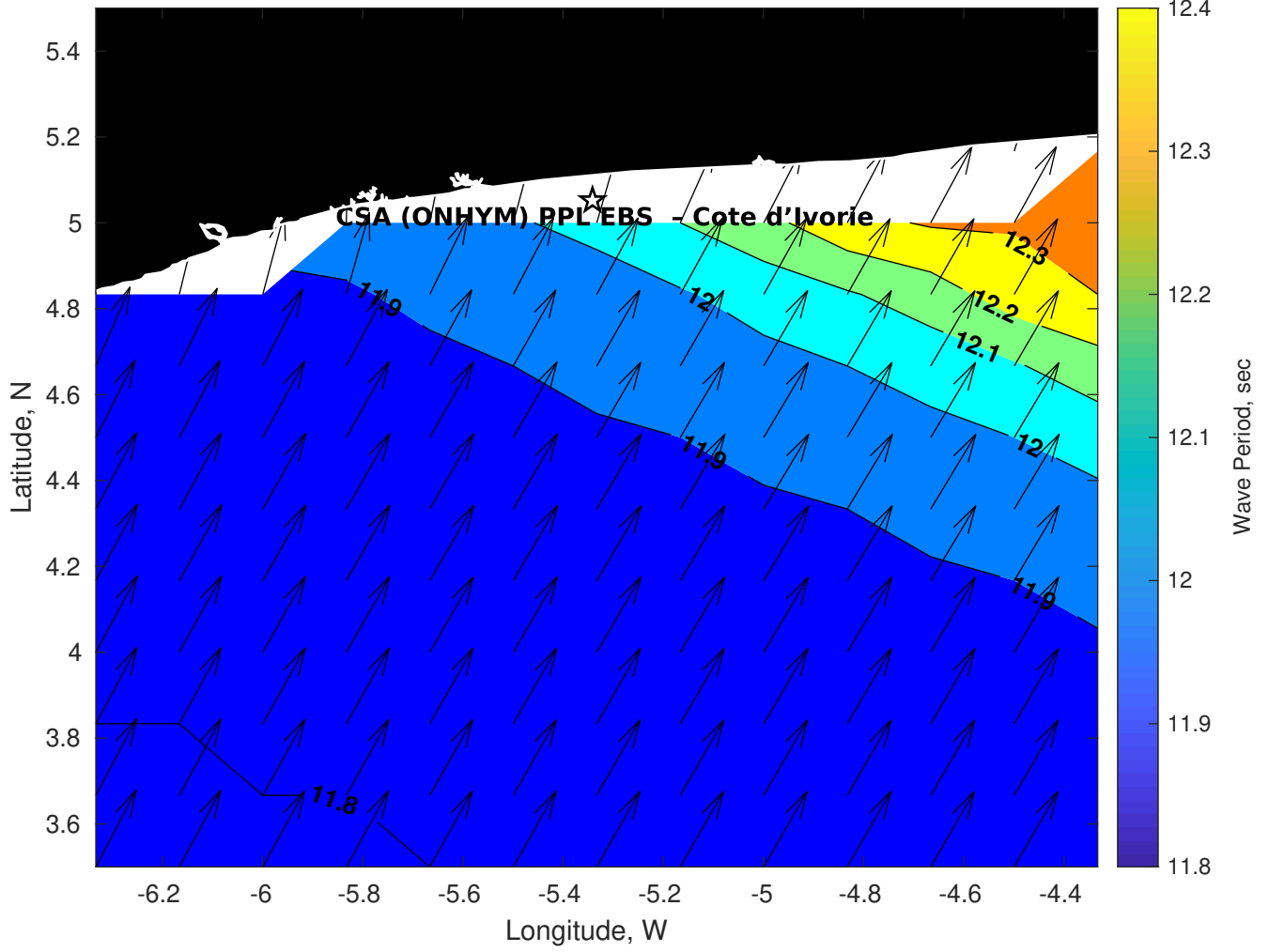
**Met Forecast for CSA (ONHYM) PPL EBS - Cote d'Ivoire from 17-Feb-2025 06:00:00 to 24-Feb-2025 06:00:00**



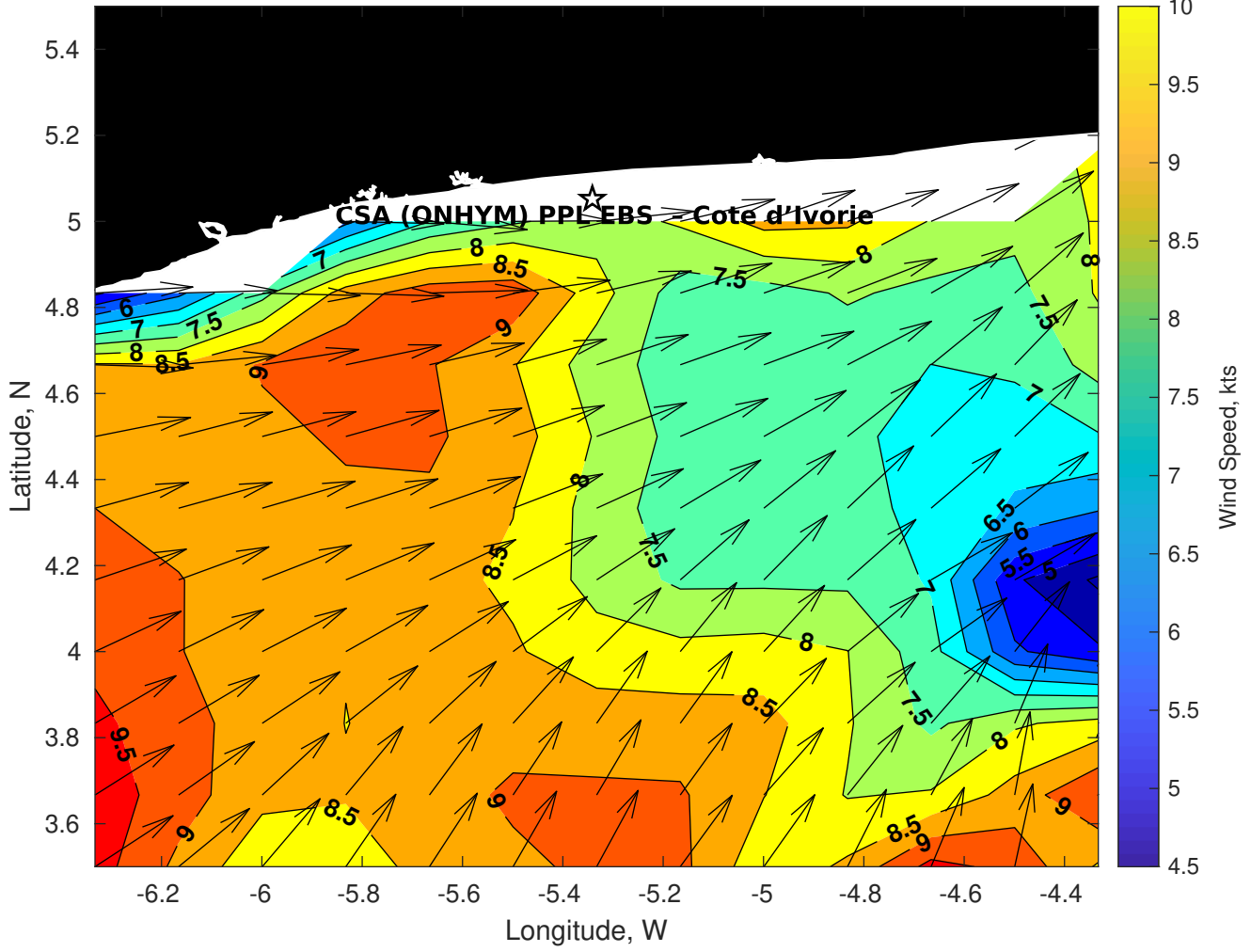
Wave Height (ft) for CSA (ONHYM) PPL EBS - Cote d'Ivoire at 17-Feb-2025 09:00:00



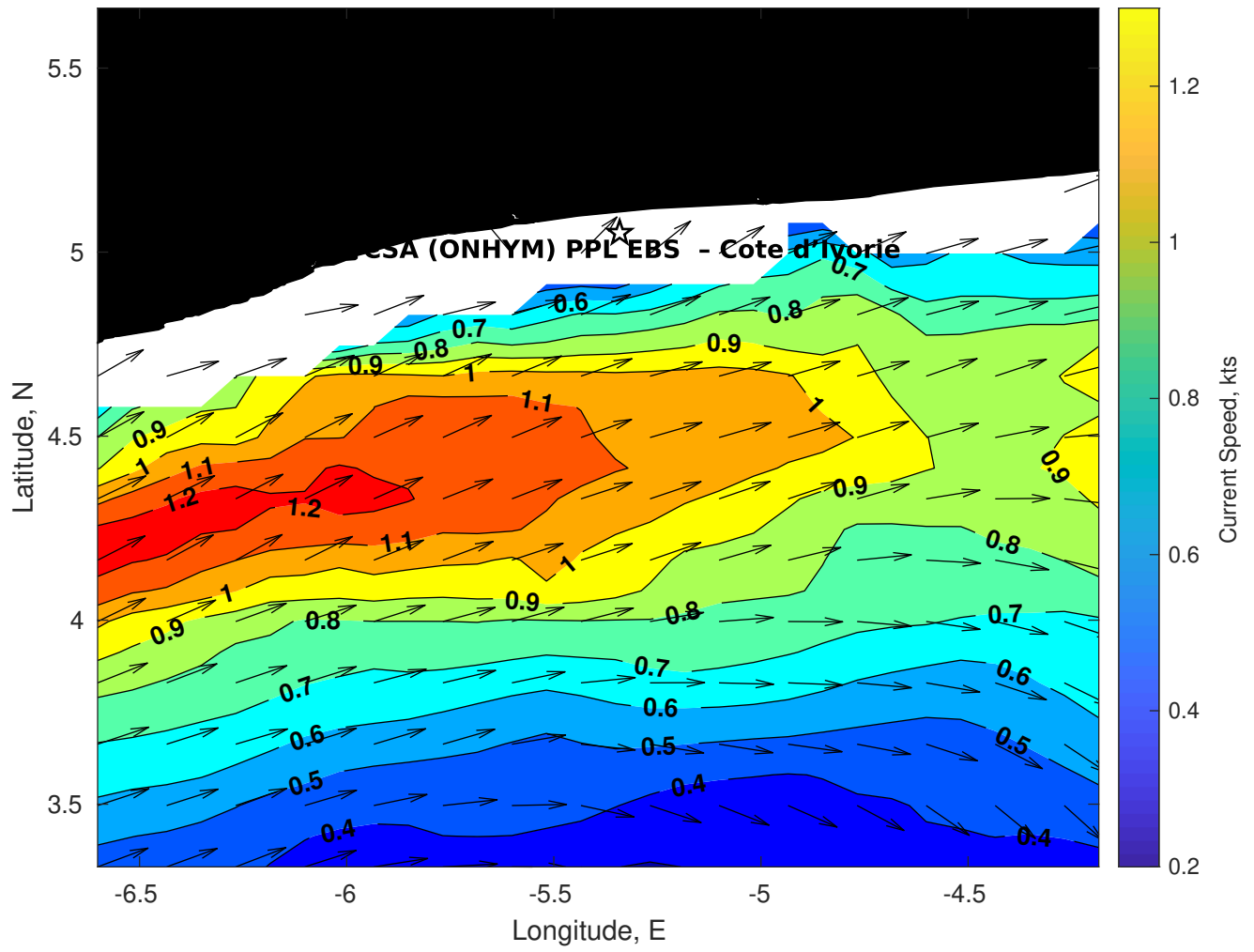
**Wave Period (sec) for CSA (ONHYM) PPL EBS - Cote d'Ivoire at 17-Feb-2025 09:00:00**



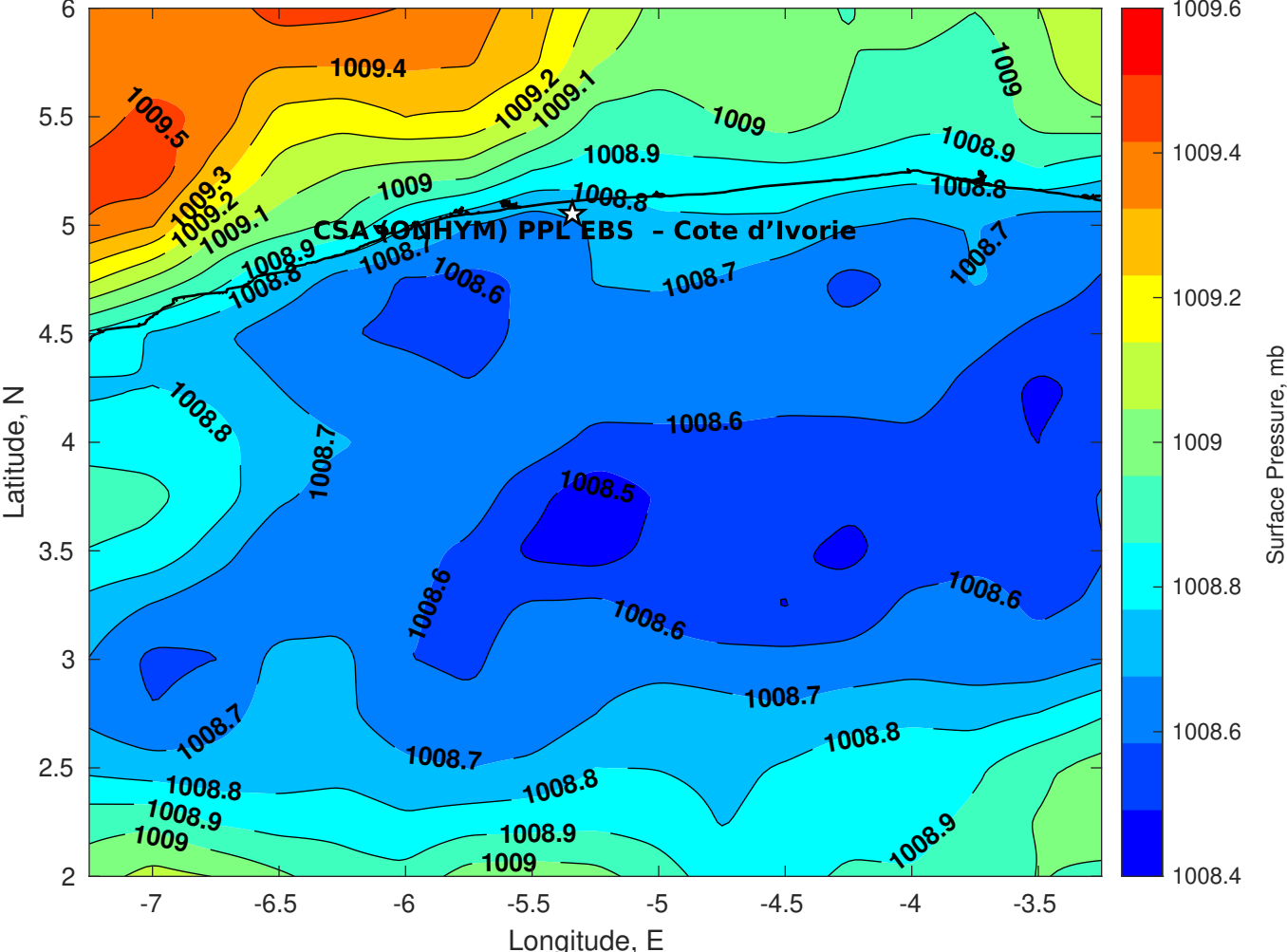
**Winds (kts) for CSA (ONHYM) PPL EBS - Cote d'Ivoire at 17-Feb-2025 09:00:00**



**Surface Currents for CSA (ONHYM) PPL EBS - Cote d'Ivoire at 16-Feb-2025 00:00:00**

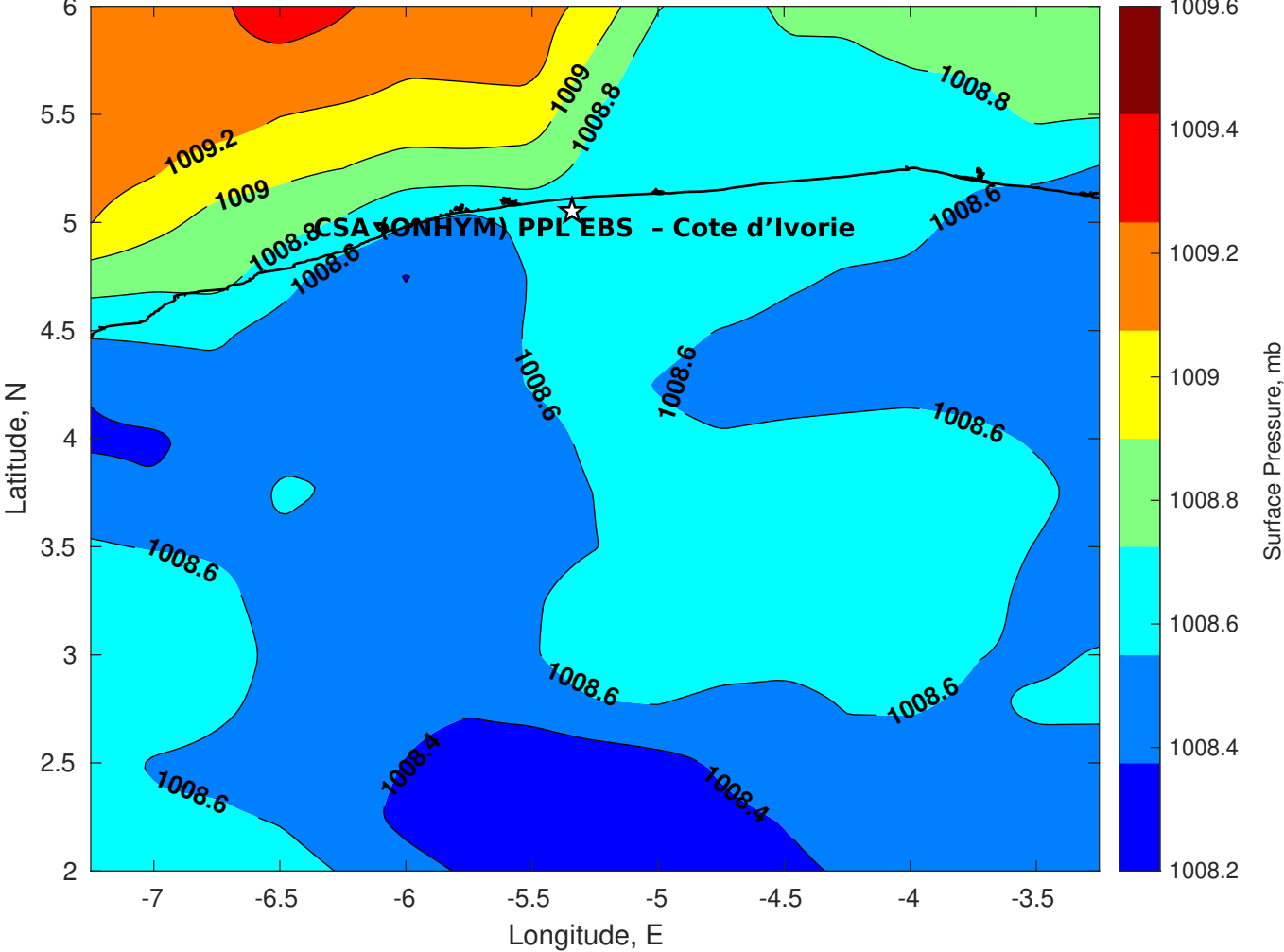


Surface Pressure (mb) for CSA (ONHYM) PPL EBS - Cote d'Ivoire at 17-Feb-2025 06:00:00

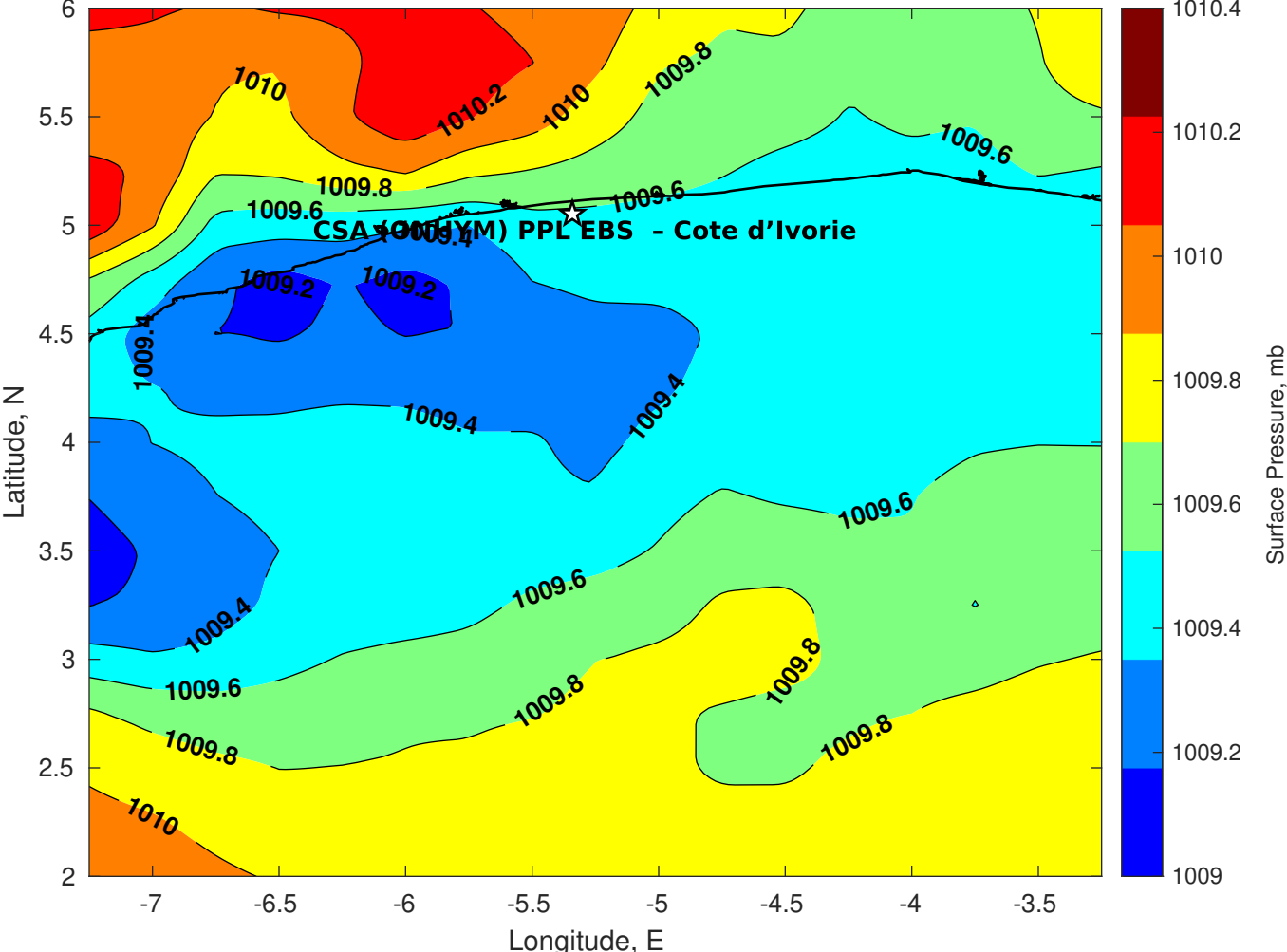




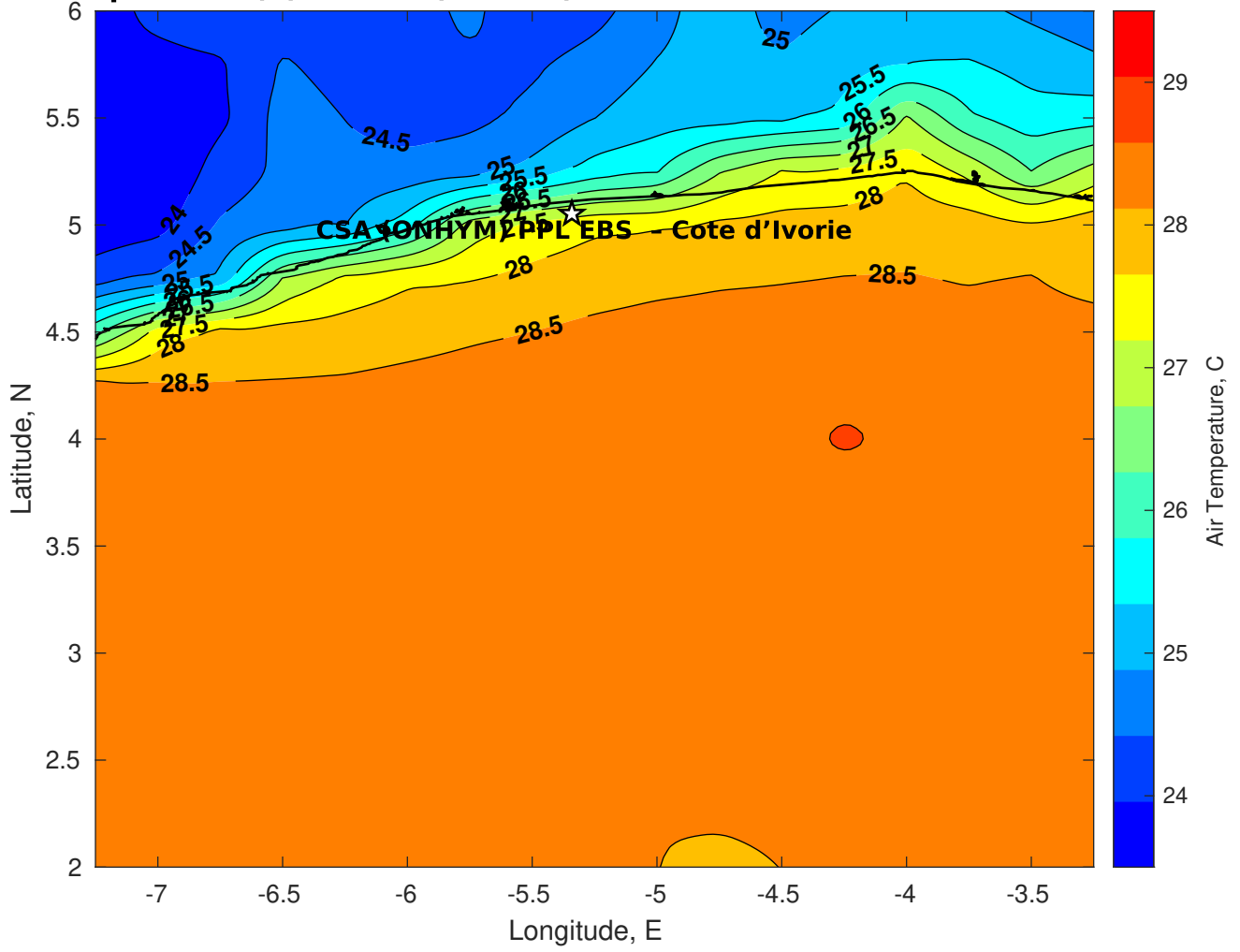
Surface Pressure (mb) for CSA (ONHYM) PPL EBS - Cote d'Ivoire at 18-Feb-2025 06:00:00



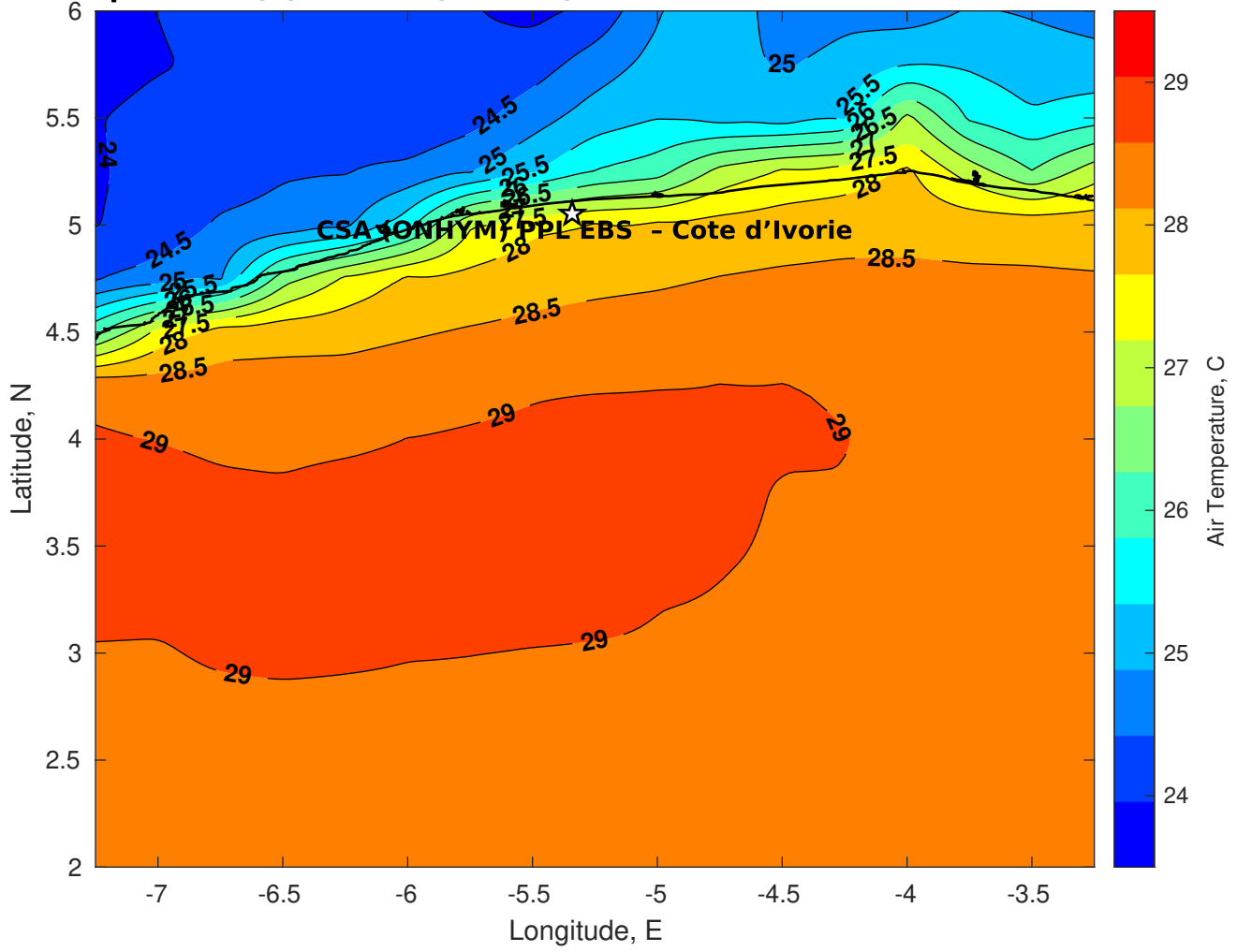
Surface Pressure (mb) for CSA (ONHYM) PPL EBS - Cote d'Ivoire at 19-Feb-2025 06:00:00



**Air Temperature (C) for CSA (ONHYM) PPL EBS - Cote d'Ivoire at 17-Feb-2025**



**Air Temperature (C) for CSA (ONHYM) PPL EBS - Cote d'Ivoire at 17-Feb-2025**



**Air Temperature (C) for CSA (ONHYM) PPL EBS - Cote d'Ivoire at 17-Feb-2025**

