
Marine Weather Forecast for CSA (ONHYM) PPL EBS - Senegal
Forecast valid as of 17-Feb-2025 0900 GMT

All times are local.

Today

Winds: N, 10-15 kts.
Waves: NW, 7-8 feet, 13-14 sec.
No currents available.

Tonight

Winds: N, 10-15 kts.
Waves: NW, 7-8 feet, 14-15 sec.
No currents available.

Tuesday

Winds: N, 15-20 kts.
Waves: NW, 7-8 feet, 18-19 sec.
No currents available.

Tuesday Night

Winds: N, 15-20 kts.
Waves: NW, 9-10 feet, 18-19 sec.
No currents available.

Wednesday

Winds: N, 15-20 kts.
Waves: NW, 10-11 feet, 16-17 sec.
No currents available.

Wednesday Night

Winds: N, 10-15 kts.
Waves: NW, 9-10 feet, 15-16 sec.
No currents available.

Thursday

Winds: N, 15-20 kts.
Waves: NW, 9-10 feet, 15-16 sec.
No currents available.

Thursday Night

Winds: N, 15-20 kts.
Waves: NW, 7-8 feet, 14-15 sec.
No currents available.

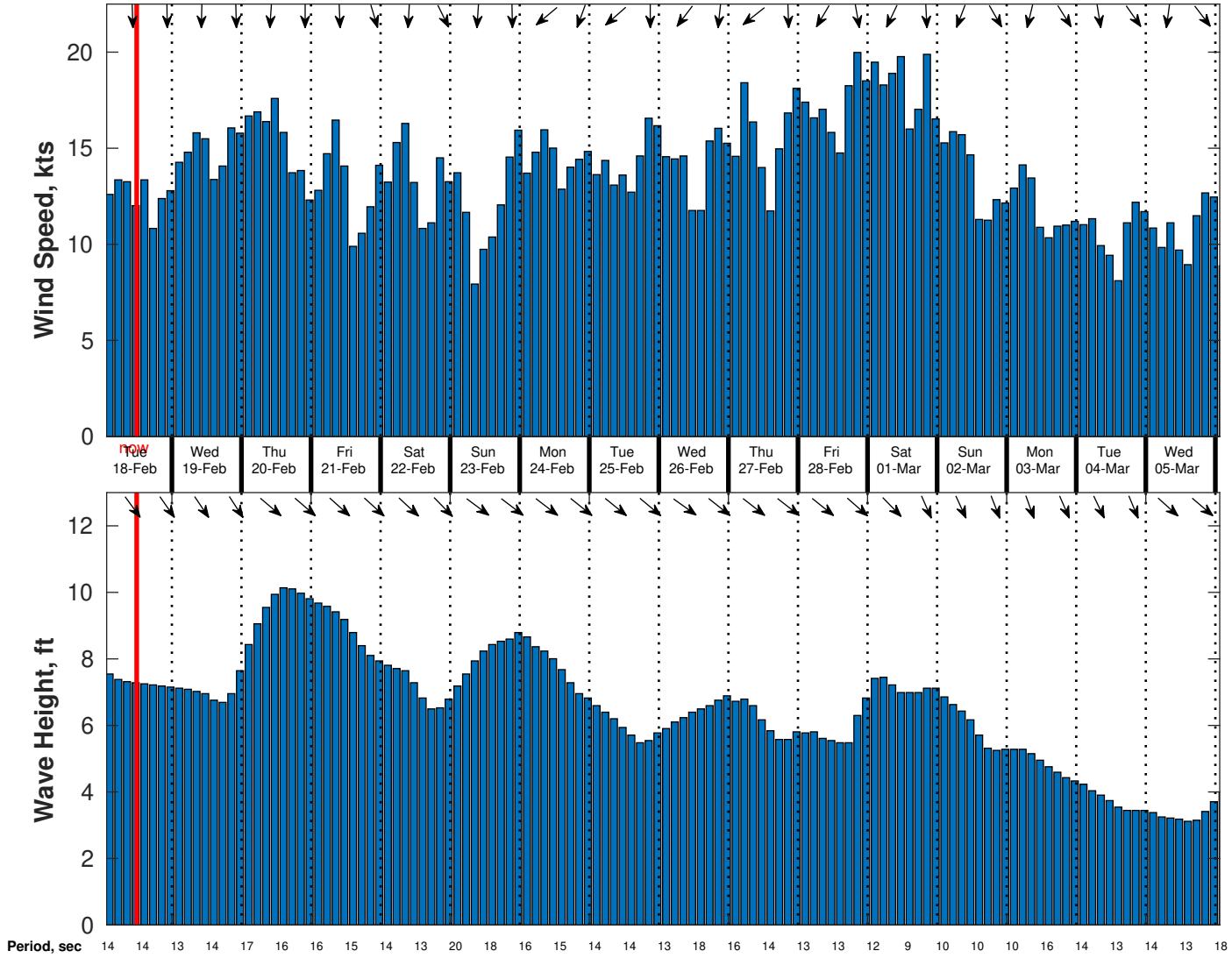
Friday

Winds: N, 15-20 kts.
Waves: NW, 7-8 feet, 13-14 sec.
No currents available.

Friday Night

Winds: N, 10-15 kts.
Waves: NW, 7-8 feet, 19-20 sec.
No currents available.

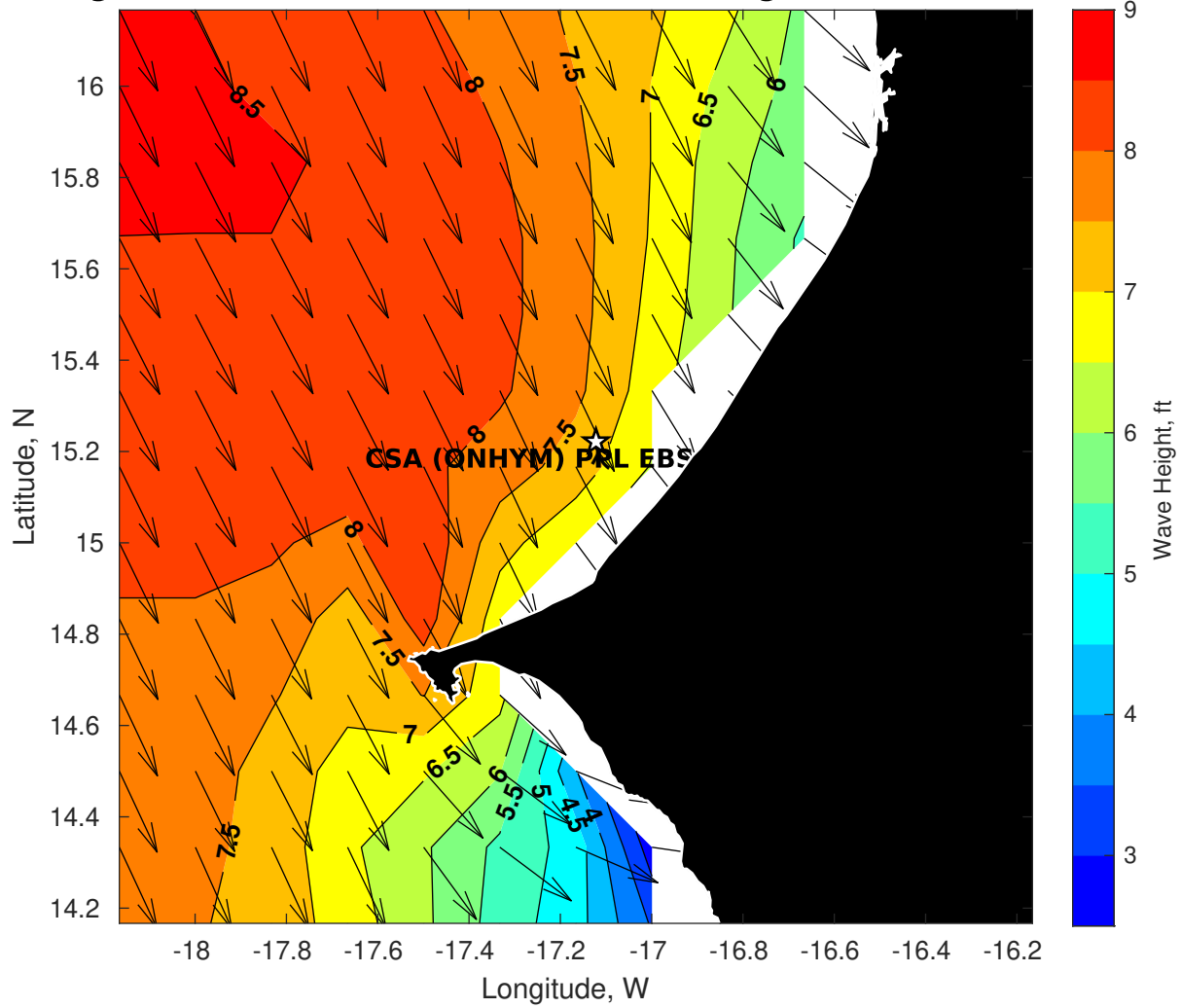
Wind & Wave Forecast for CSA (ONHYM) PPL EBS - Senegal from 17-Feb-2025 01:00:00 to 05-Mar-2025 01:00:00



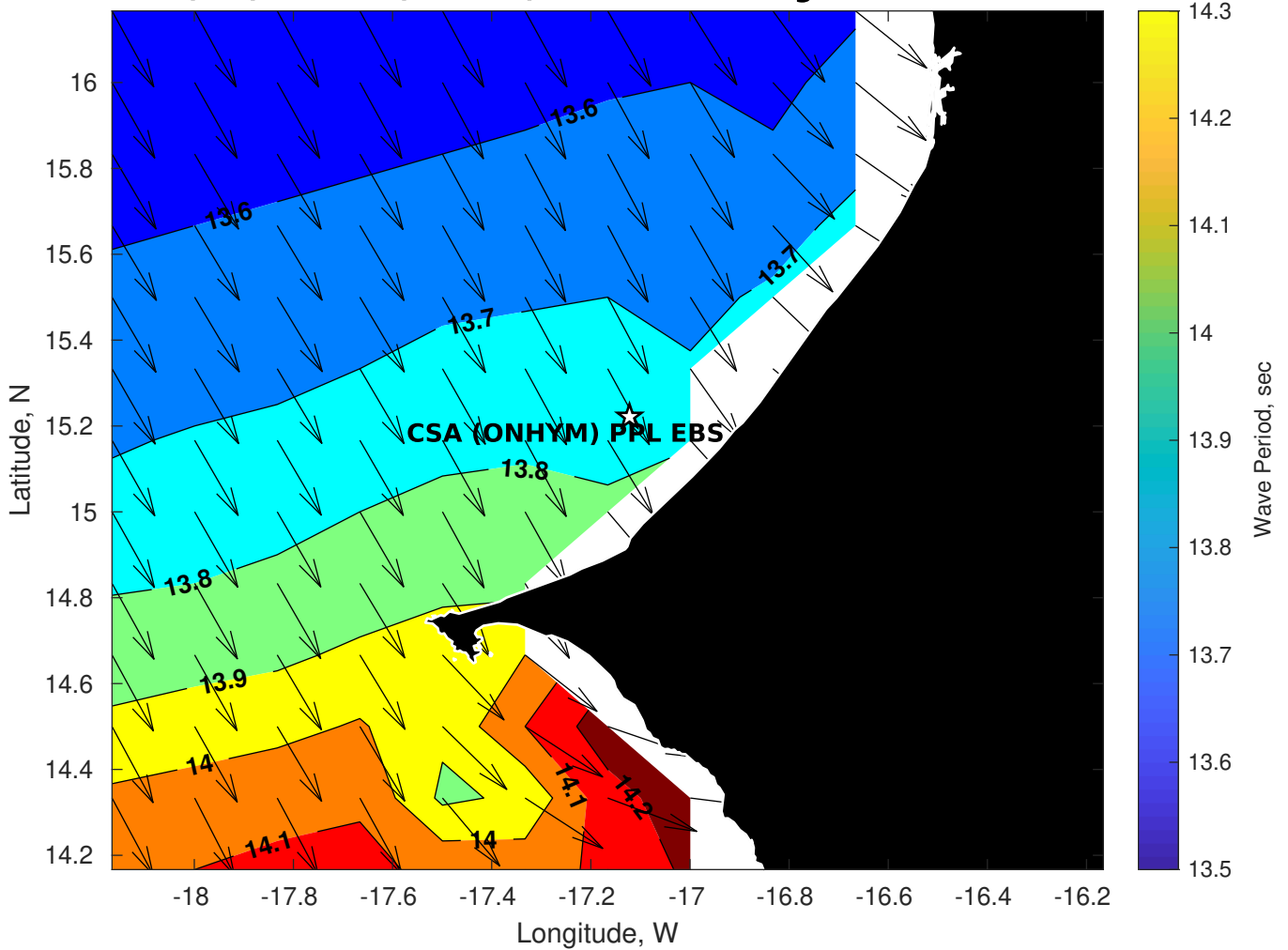
Met Forecast for CSA (ONHYM) PPL EBS - Senegal from 17-Feb-2025 00:00:00 to 24-Feb-2025 00:00:00



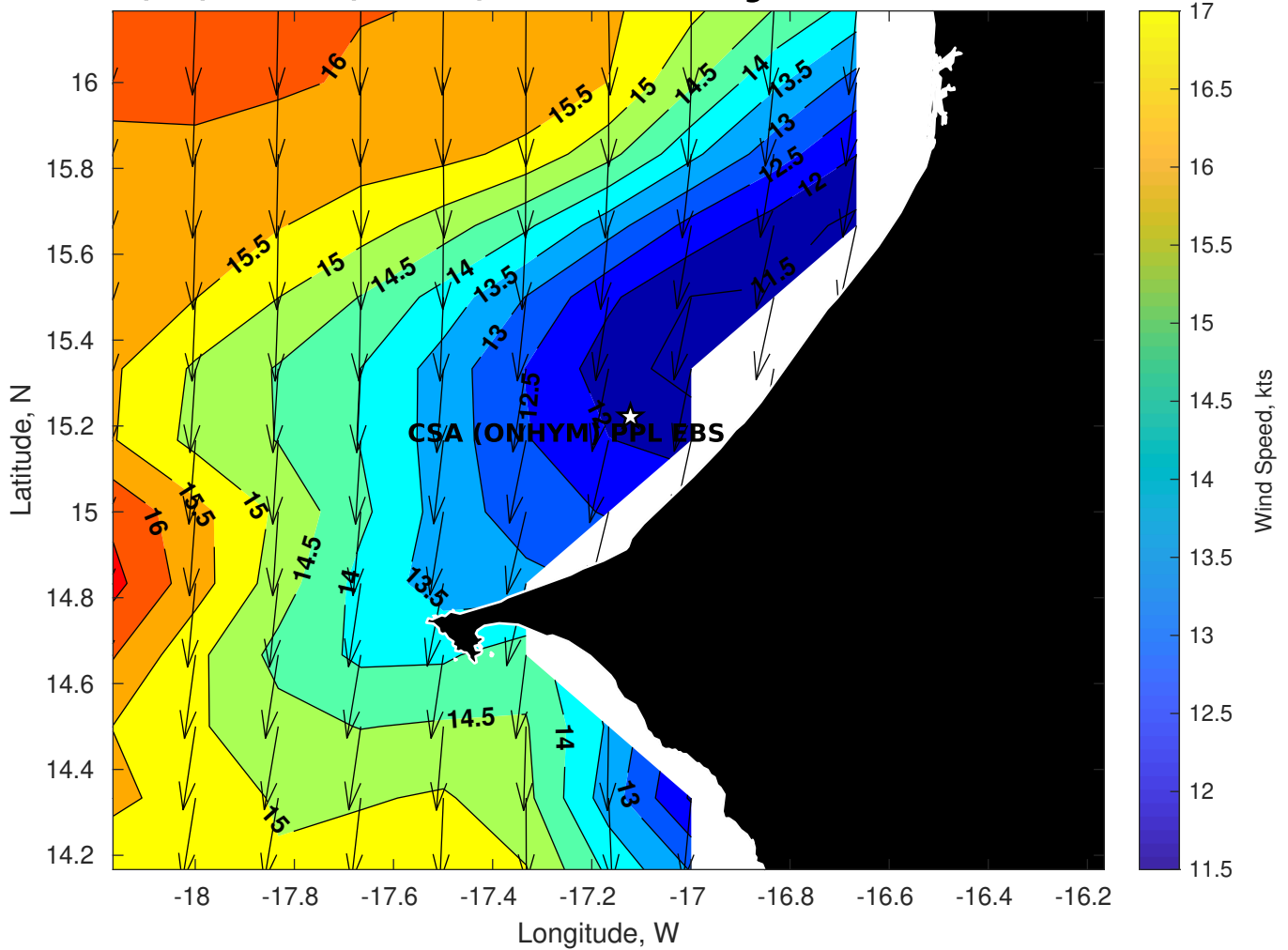
Wave Height (ft) for CSA (ONHYM) PPL EBS - Senegal at 17-Feb-2025 09:00:00



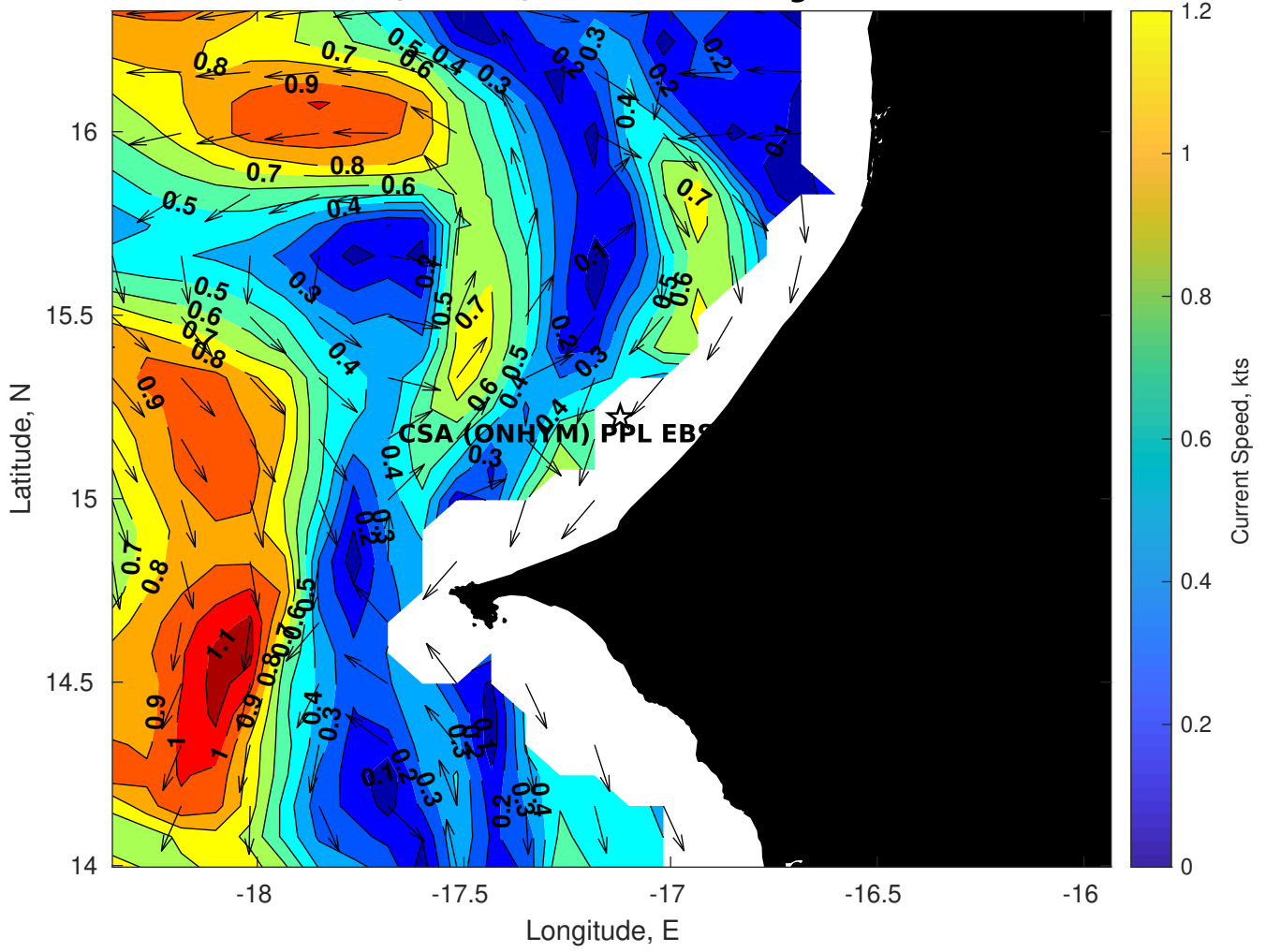
Wave Period (sec) for CSA (ONHYM) PPL EBS - Senegal at 17-Feb-2025 09:00:00



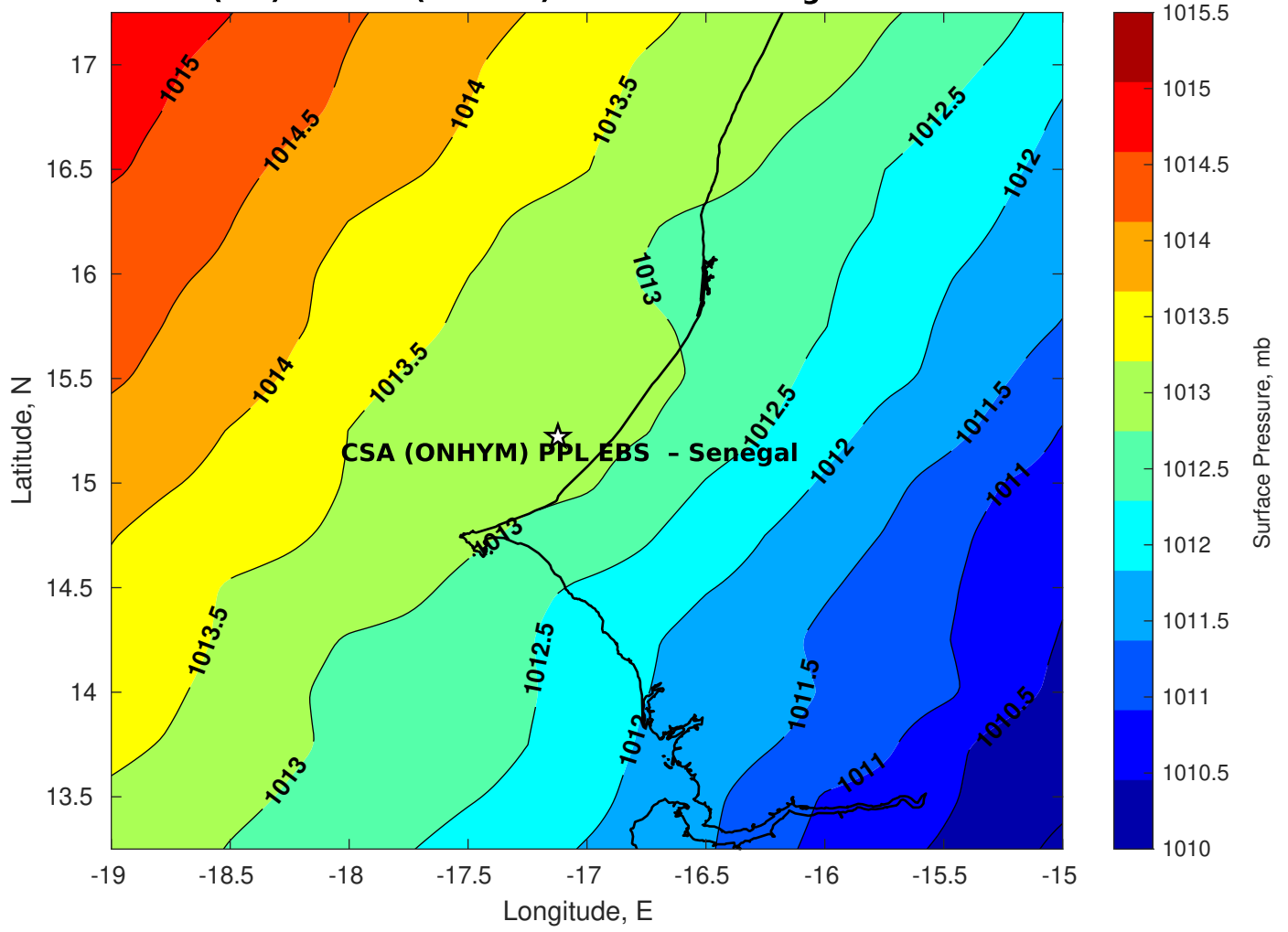
Winds (kts) for CSA (ONHYM) PPL EBS - Senegal at 17-Feb-2025 09:00:00



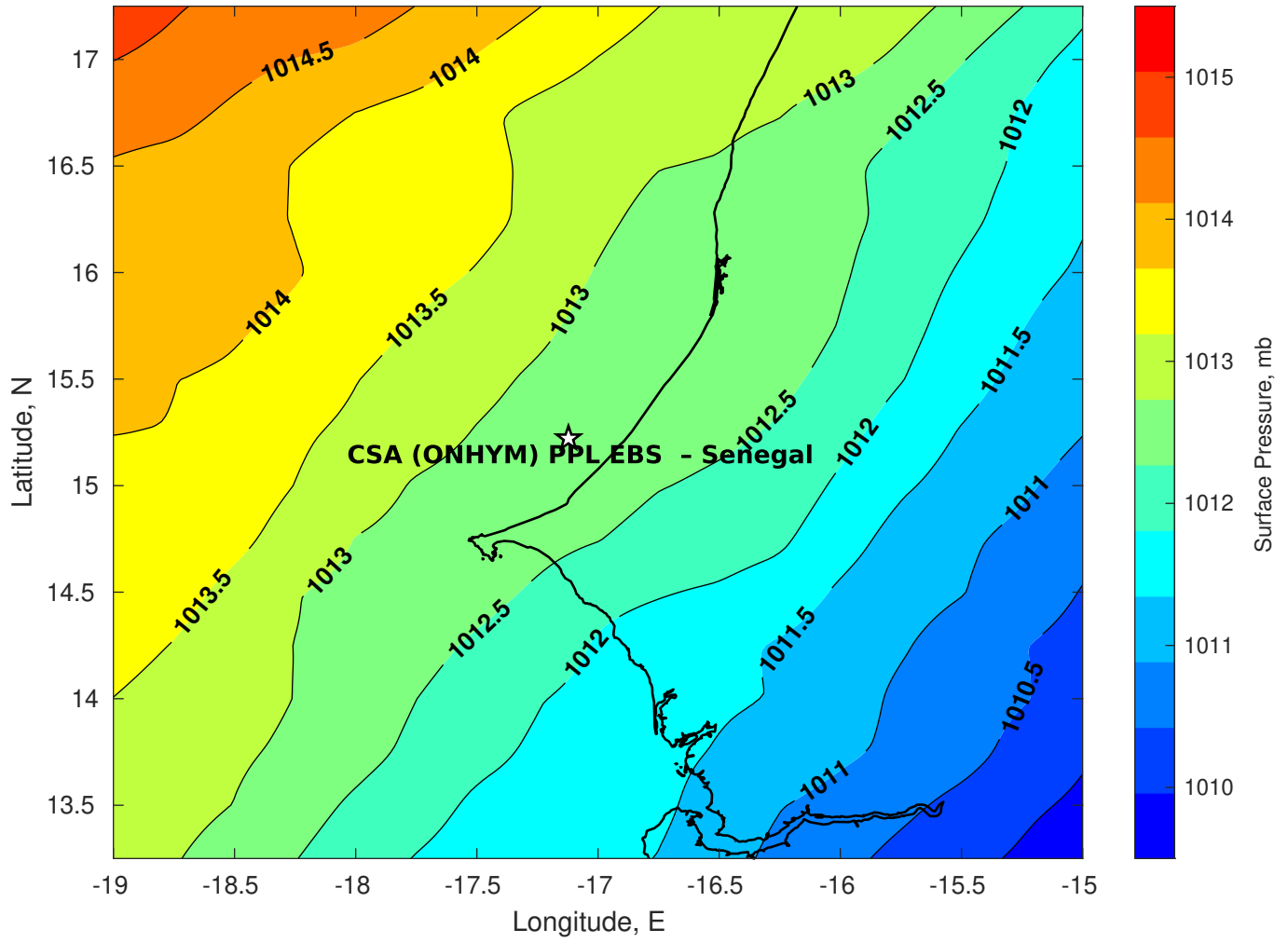
Surface Currents for CSA (ONHYM) PPL EBS - Senegal at 16-Feb-2025 00:00:00



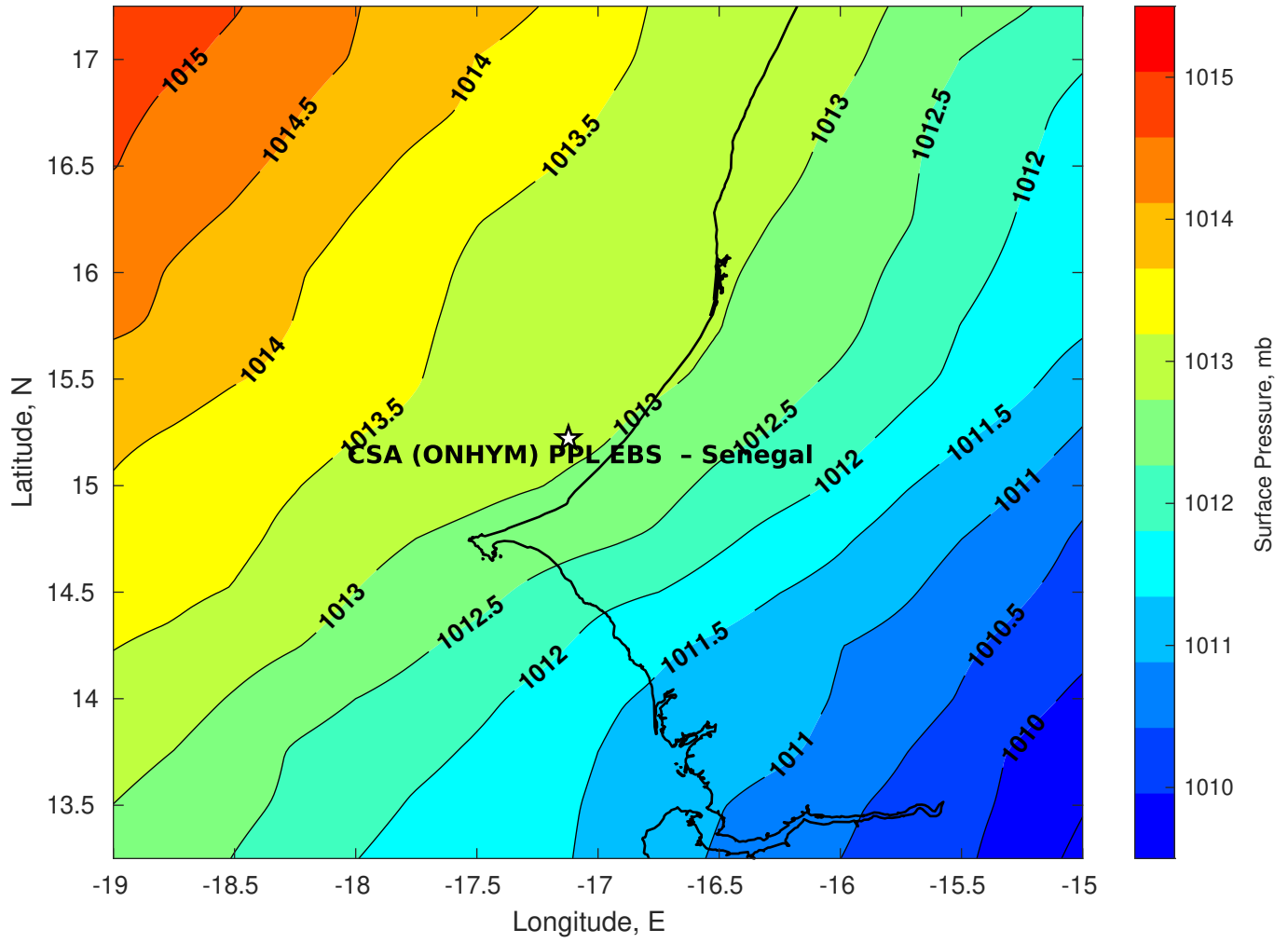
Surface Pressure (mb) for CSA (ONHYM) PPL EBS - Senegal at 17-Feb-2025 00:00:00



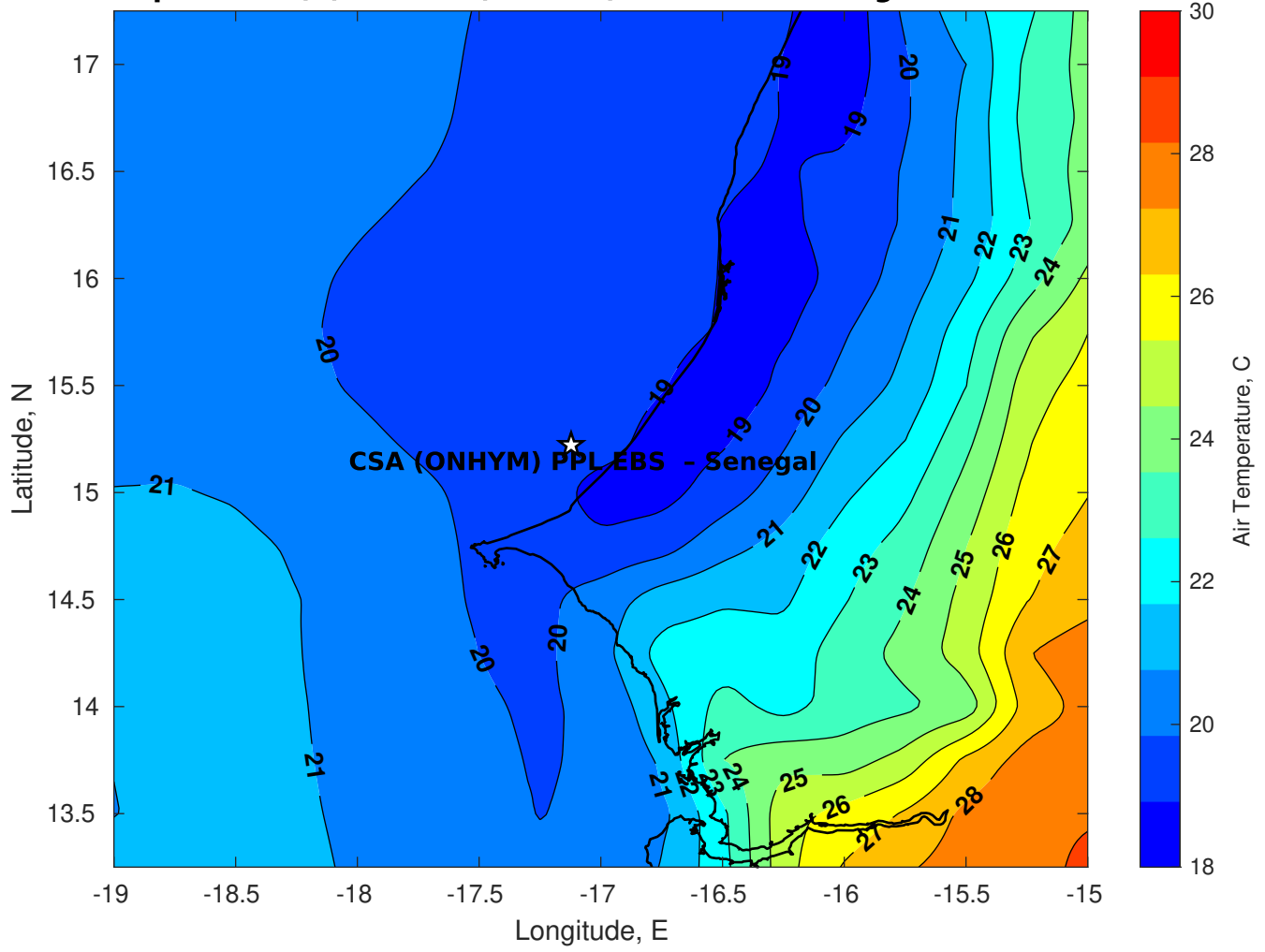
Surface Pressure (mb) for CSA (ONHYM) PPL EBS - Senegal at 18-Feb-2025 00:00:00



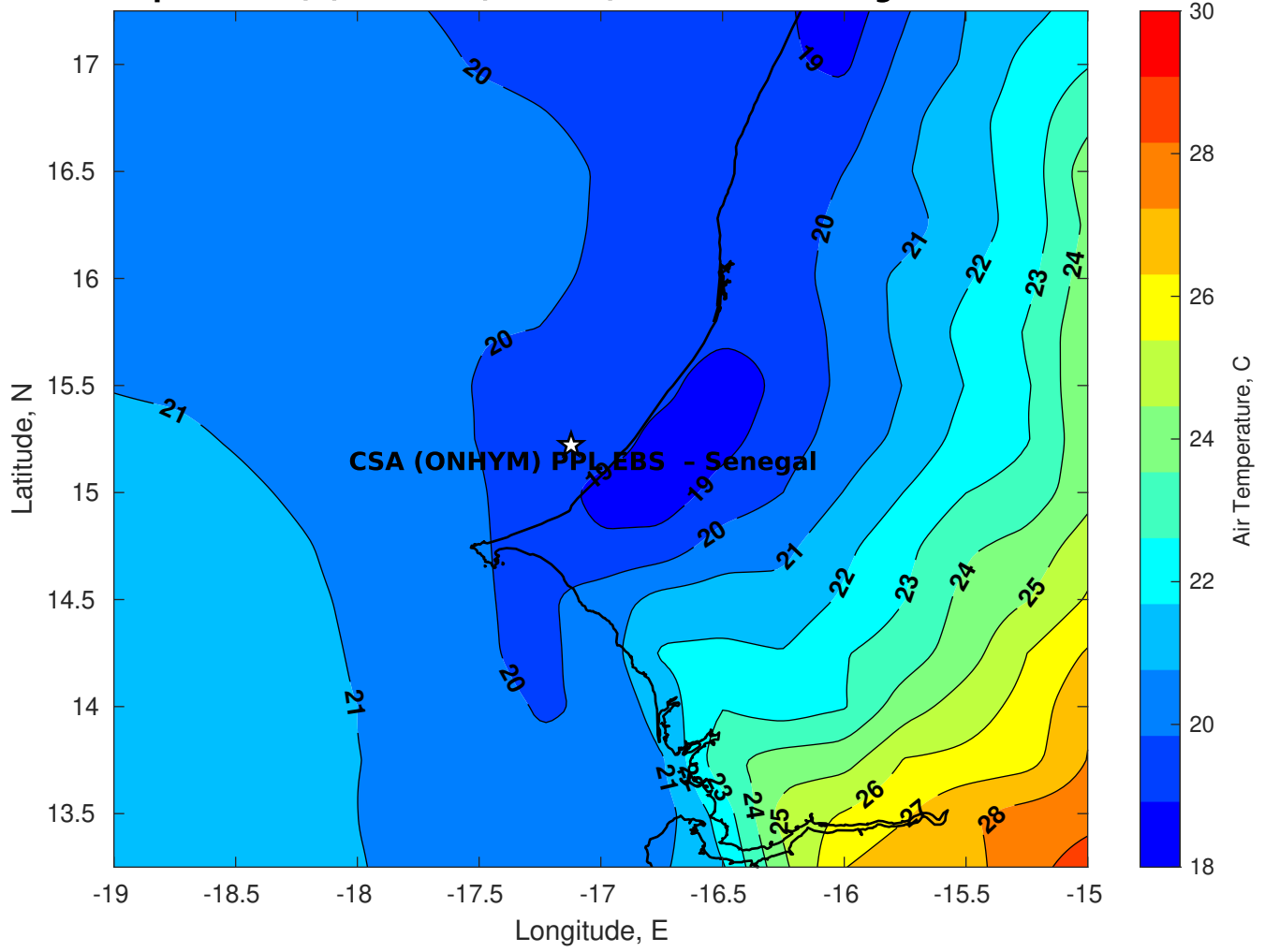
Surface Pressure (mb) for CSA (ONHYM) PPL EBS - Senegal at 19-Feb-2025 00:00:00



Air Temperature (C) for CSA (ONHYM) PPL EBS - Senegal at 17-Feb-2025



Air Temperature (C) for CSA (ONHYM) PPL EBS - Senegal at 17-Feb-2025



Air Temperature (C) for CSA (ONHYM) PPL EBS - Senegal at 17-Feb-2025

