
Marine Weather Forecast for Tampnet P2378 South Texas Cable Route Geophysical
Forecast valid as of 17-Feb-2025 0900 GMT

All times are local.

Today

Winds: E, 5-10 kts.
Waves: NE, 4-5 feet, 6-7 sec.
No currents available.

Tonight

Winds: NE, 15-20 kts.
Waves: E, 4-5 feet, 6-7 sec.
No currents available.

Monday

Winds: E, 5-10 kts.
Waves: NE, 4-5 feet, 6-7 sec.
No currents available.

Tuesday Night

Winds: N, 10-15 kts.
Waves: E, 3-4 feet, 6-7 sec.
No currents available.

Tuesday

Winds: NE, 10-15 kts.
Waves: E, 4-5 feet, 6-7 sec.
No currents available.

Wednesday Night

Winds: N, 20-25 kts.
Waves: NE, 8-9 feet, 8-9 sec.
No currents available.

Wednesday

Winds: N, 30-35 kts.
Waves: NE, 8-9 feet, 7-8 sec.
No currents available.

Thursday Night

Winds: E, 15-20 kts.
Waves: NE, 6-7 feet, 7-8 sec.
No currents available.

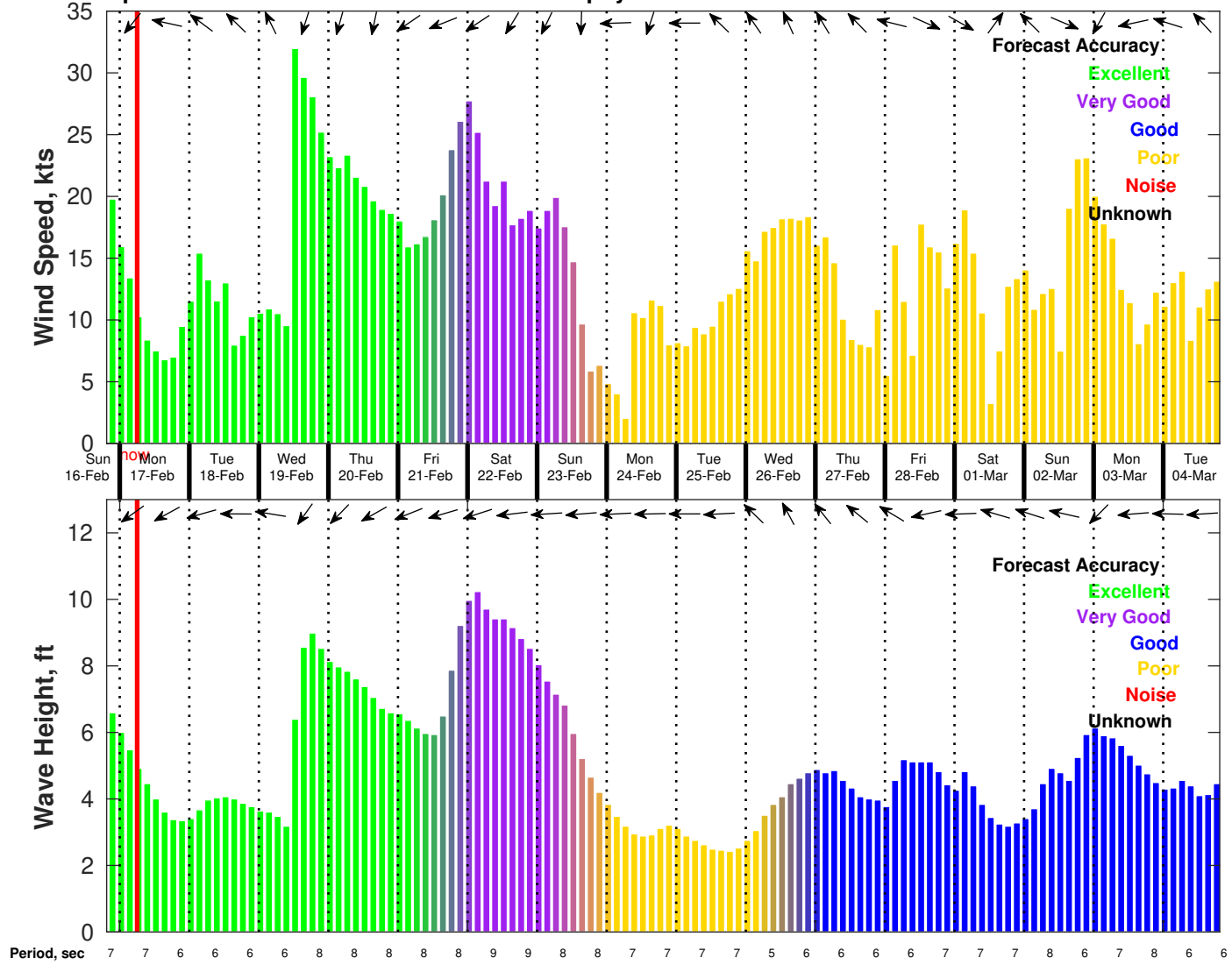
Thursday

Winds: NE, 20-25 kts.
Waves: NE, 7-8 feet, 8-9 sec.
No currents available.

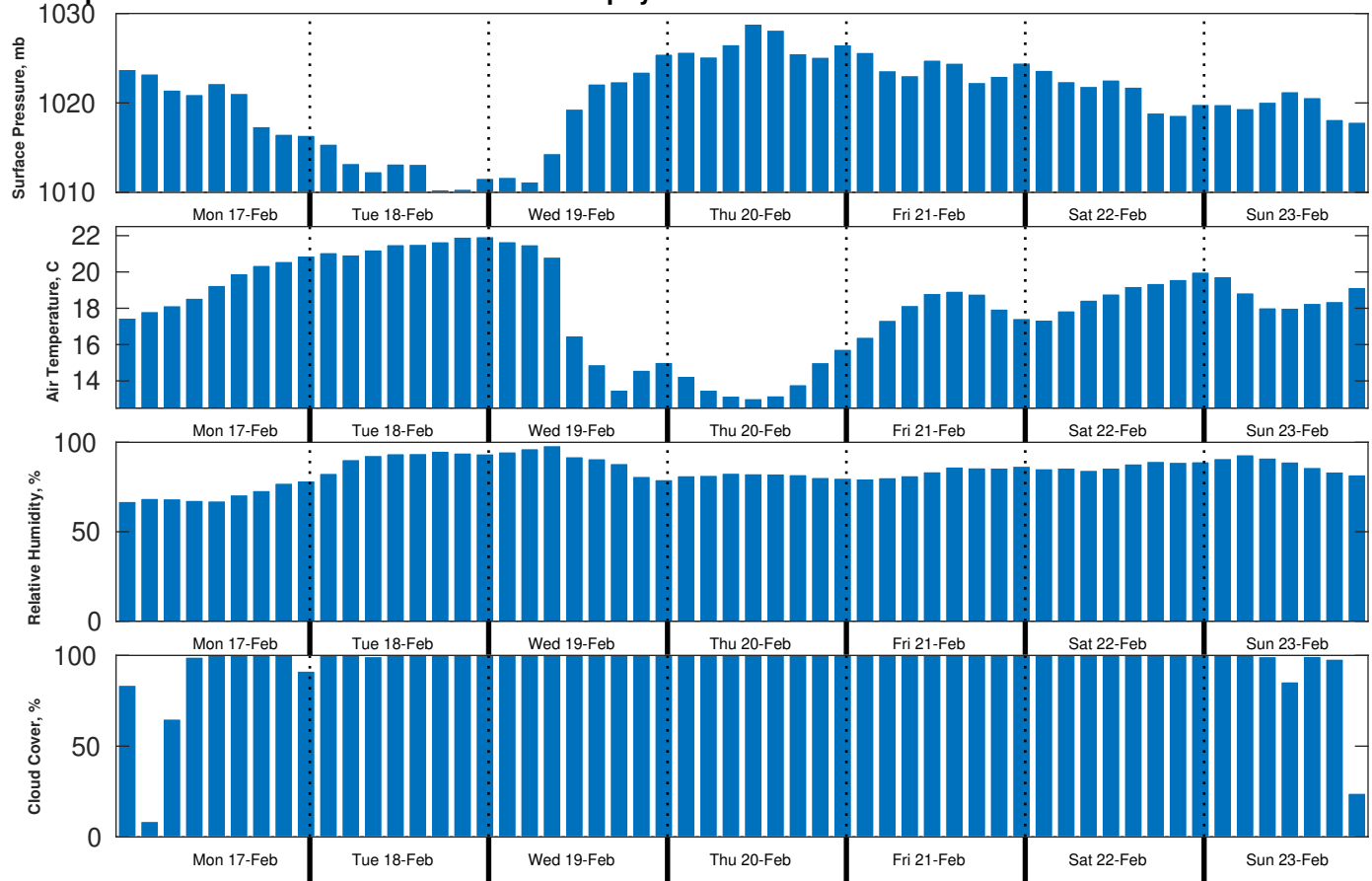
Friday Night

Winds: NE, 25-30 kts.
Waves: E, 10-11 feet, 9-10 sec.
No currents available.

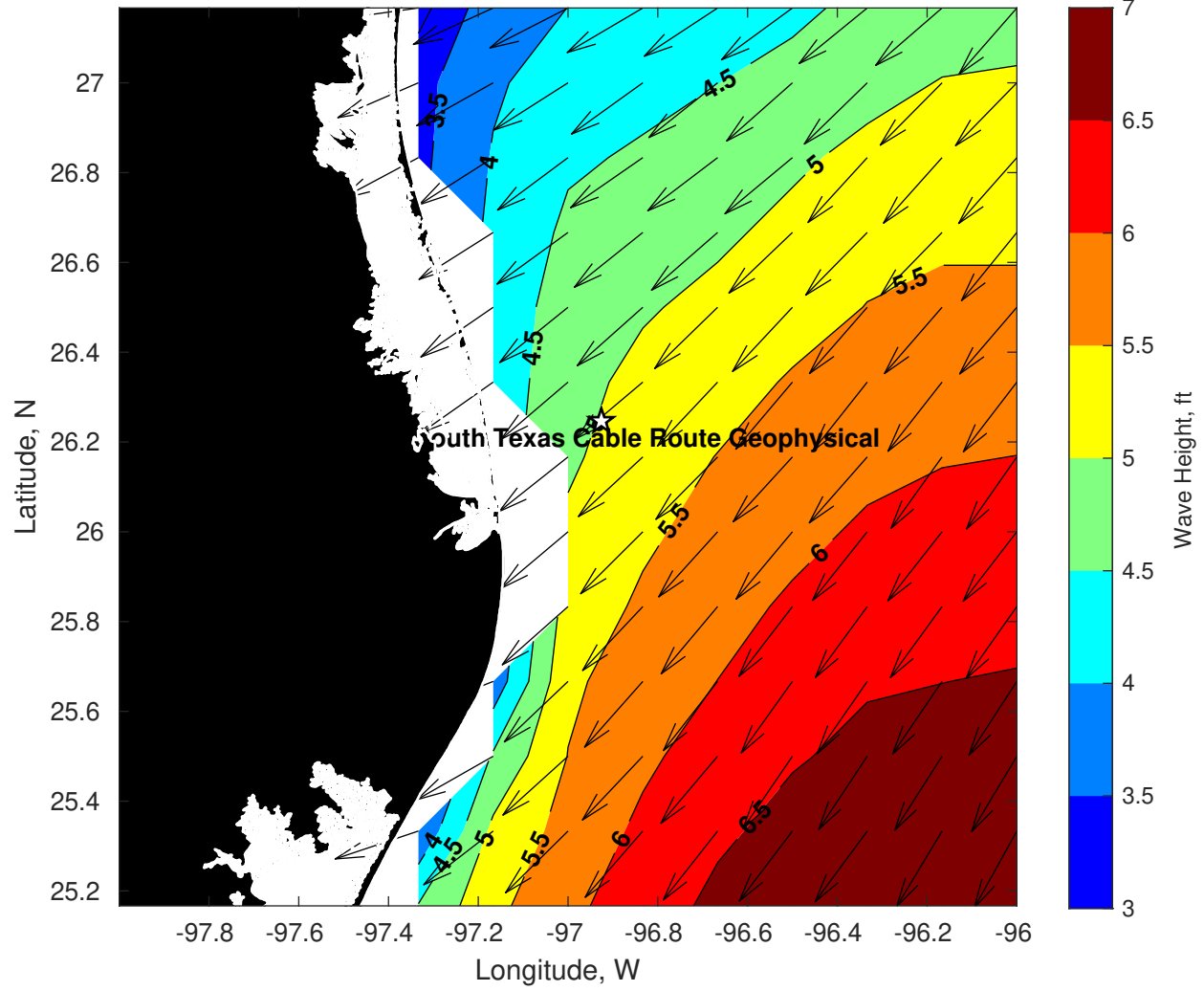
Wind & Wave Forecast for Tampnet P2378 South Texas Cable Route Geophysical from 16-Feb-2025 20:00:00 to 04-Mar-2025 20:00:00



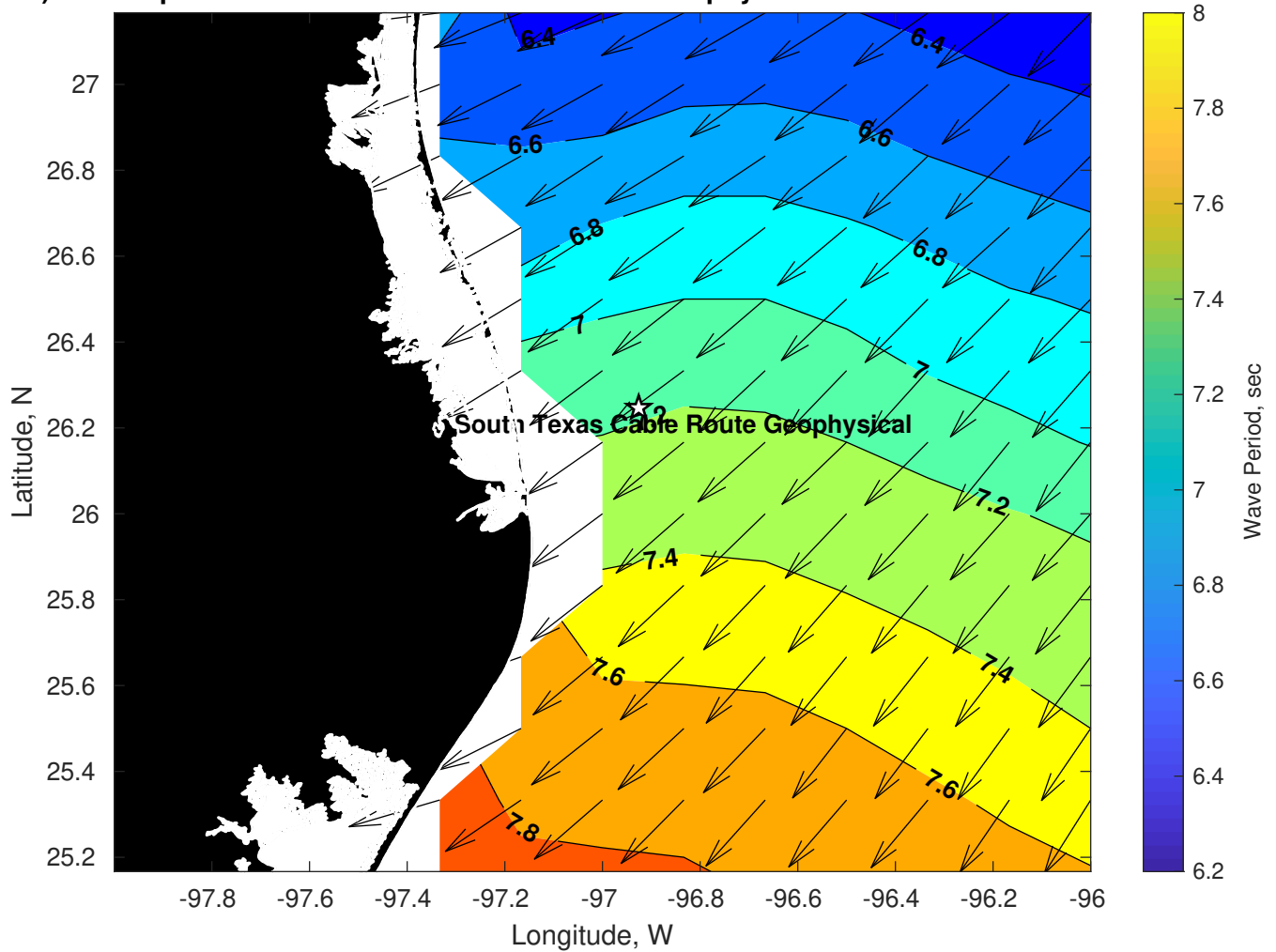
Met Forecast for Tampnet P2378 South Texas Cable Route Geophysical from 17-Feb-2025 00:00:00 to 24-Feb-2025 00:00:00



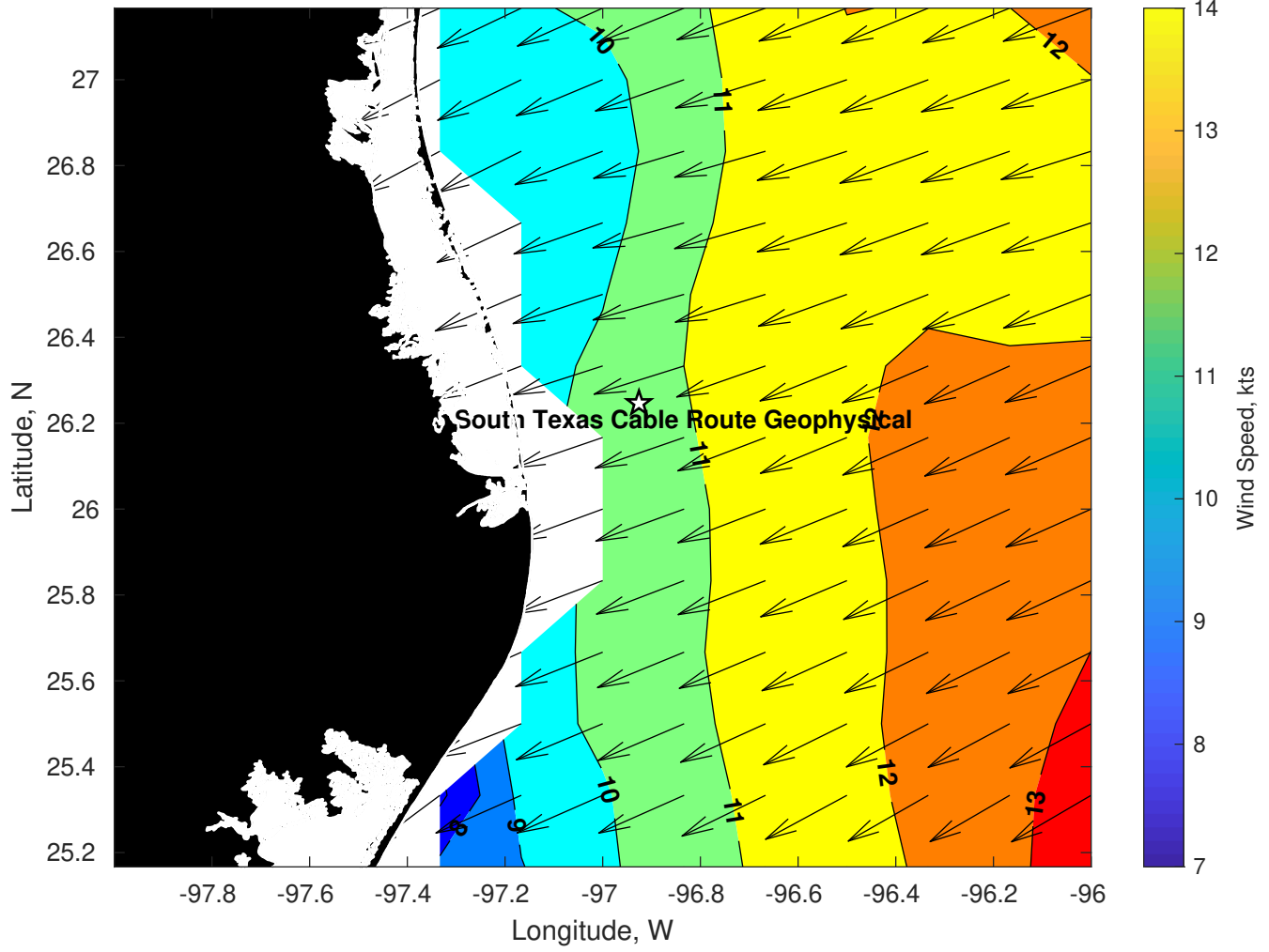
Wave Height (ft) for Tampnet P2378 South Texas Cable Route Geophysical at 17-Feb-2025 09:00:00



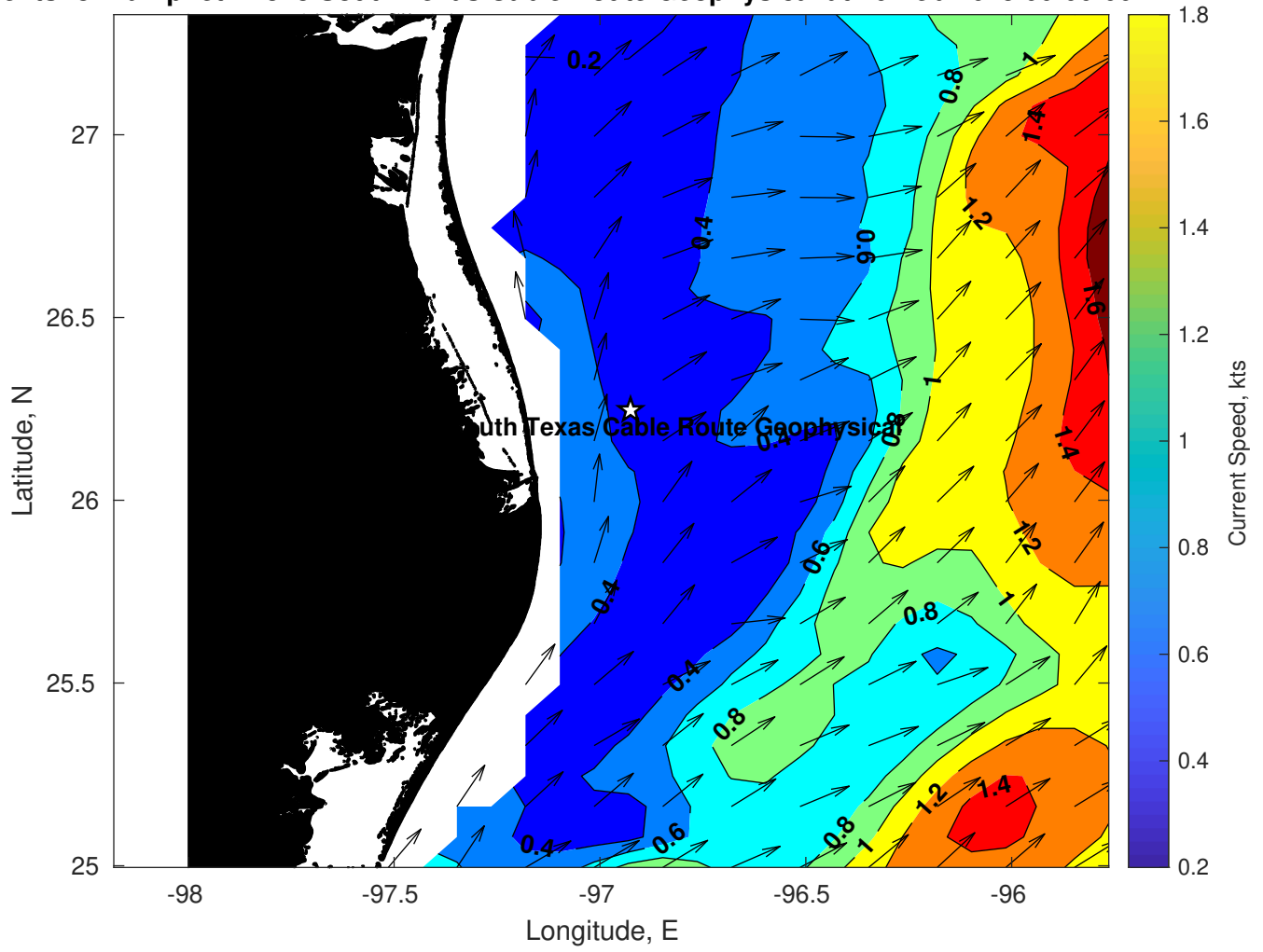
Period (sec) for Tampnet P2378 South Texas Cable Route Geophysical at 17-Feb-2025 09:00:00



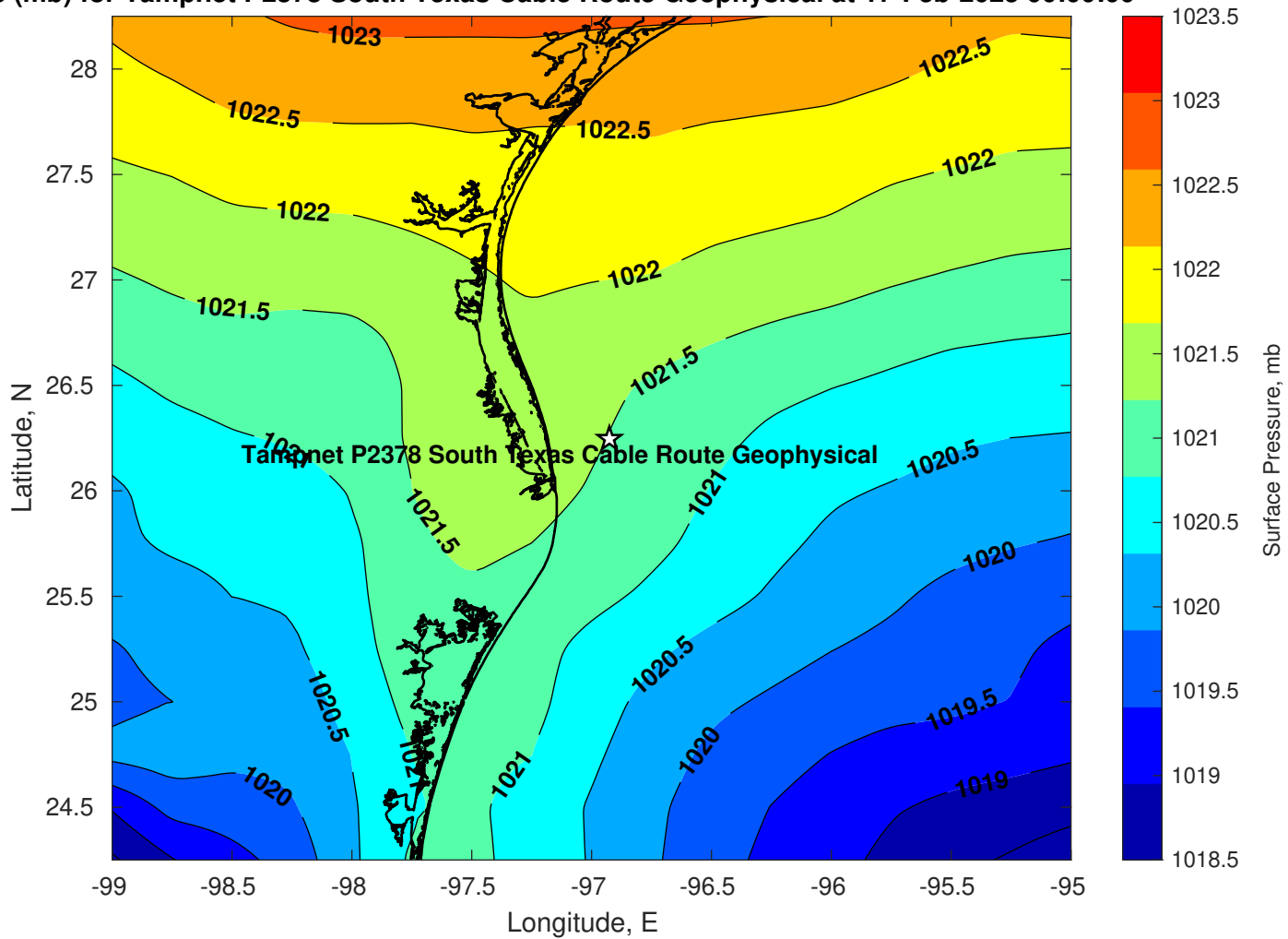
Winds (kts) for Tampnet P2378 South Texas Cable Route Geophysical at 17-Feb-2025 09:00:00



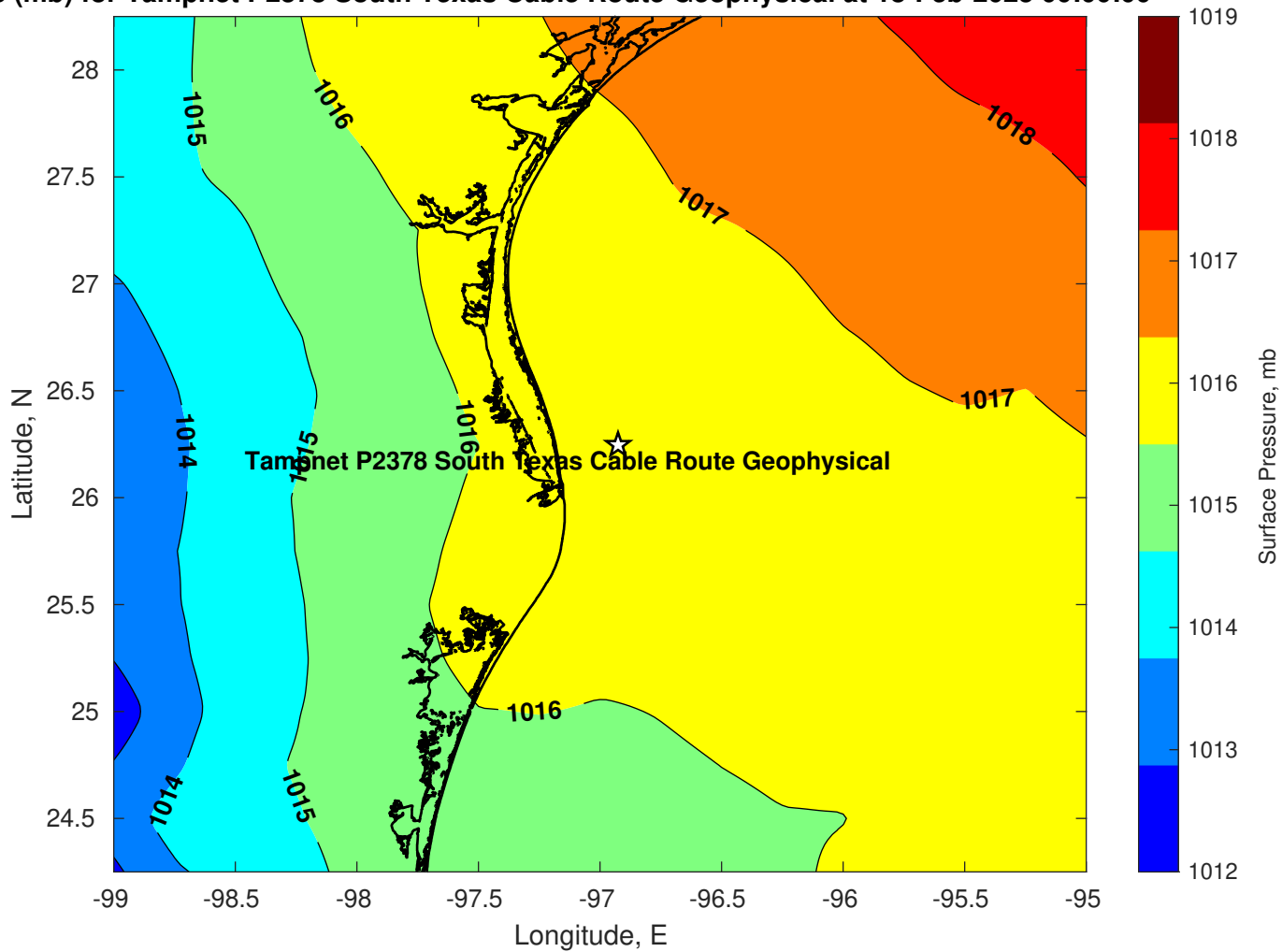
Surface Currents for Tampnet P2378 South Texas Cable Route Geophysical at 16-Feb-2025 00:00:00



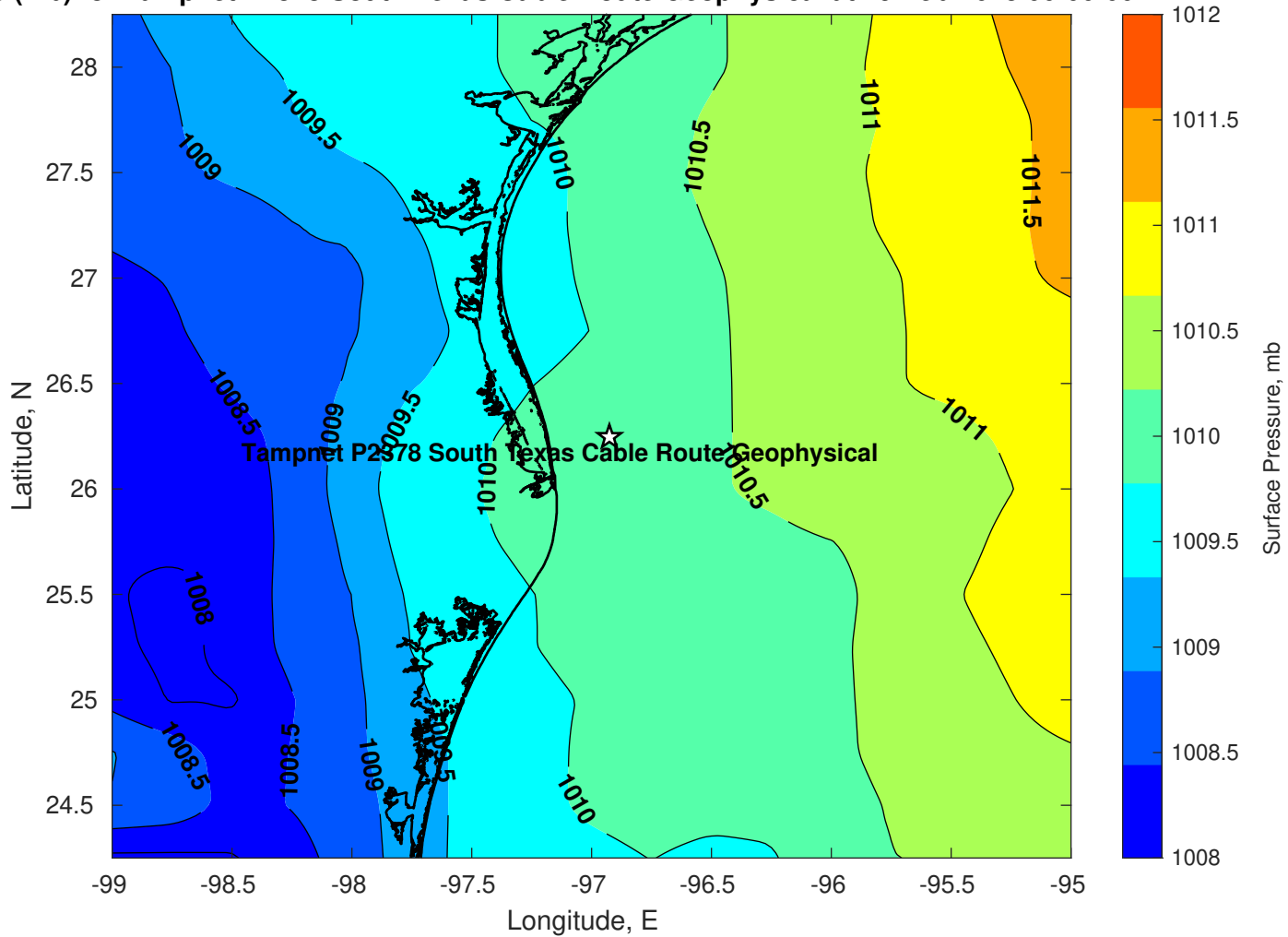
Pressure (mb) for Tampnet P2378 South Texas Cable Route Geophysical at 17-Feb-2025 00:00:00



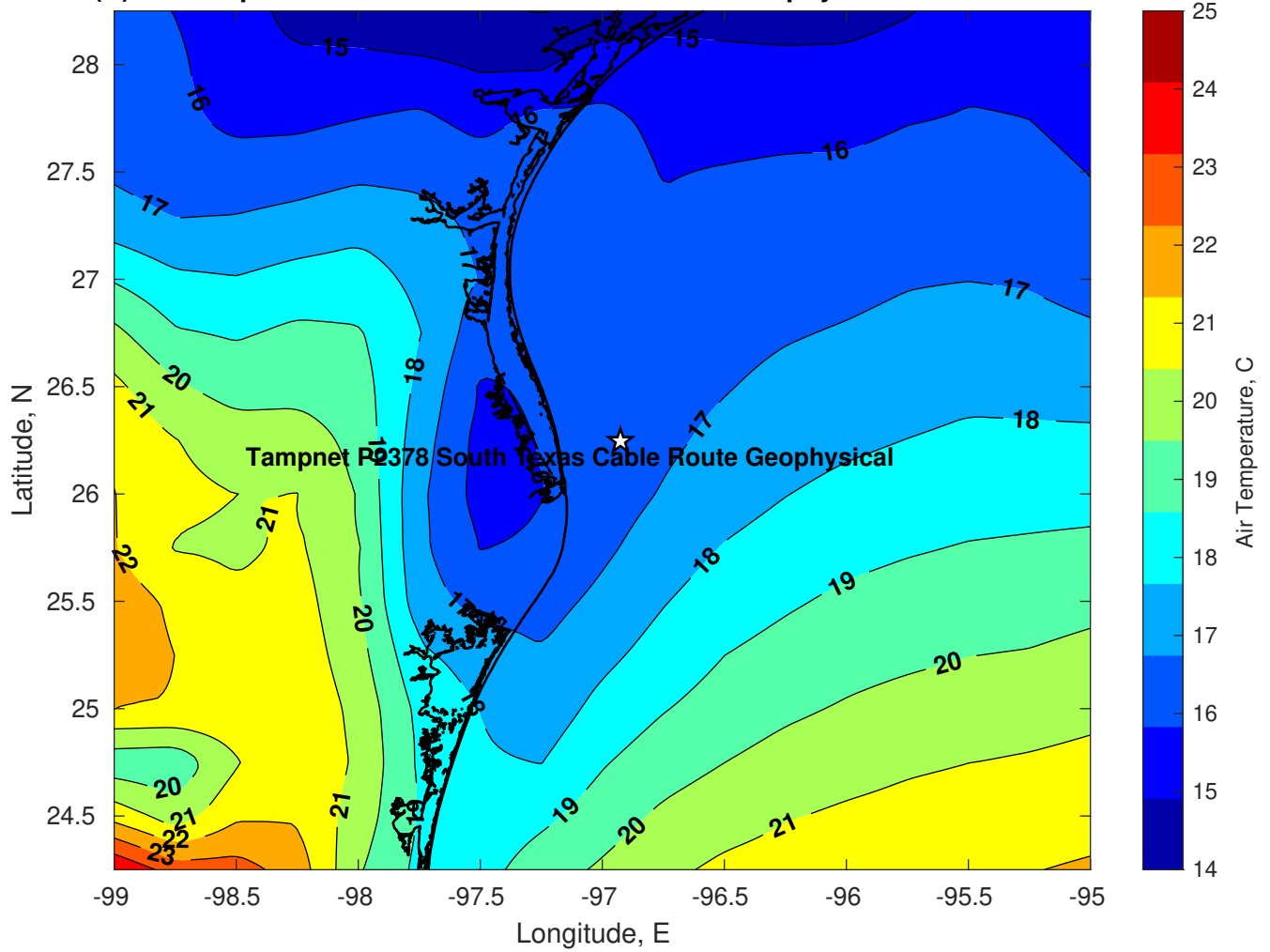
Pressure (mb) for Tampnet P2378 South Texas Cable Route Geophysical at 18-Feb-2025 00:00:00



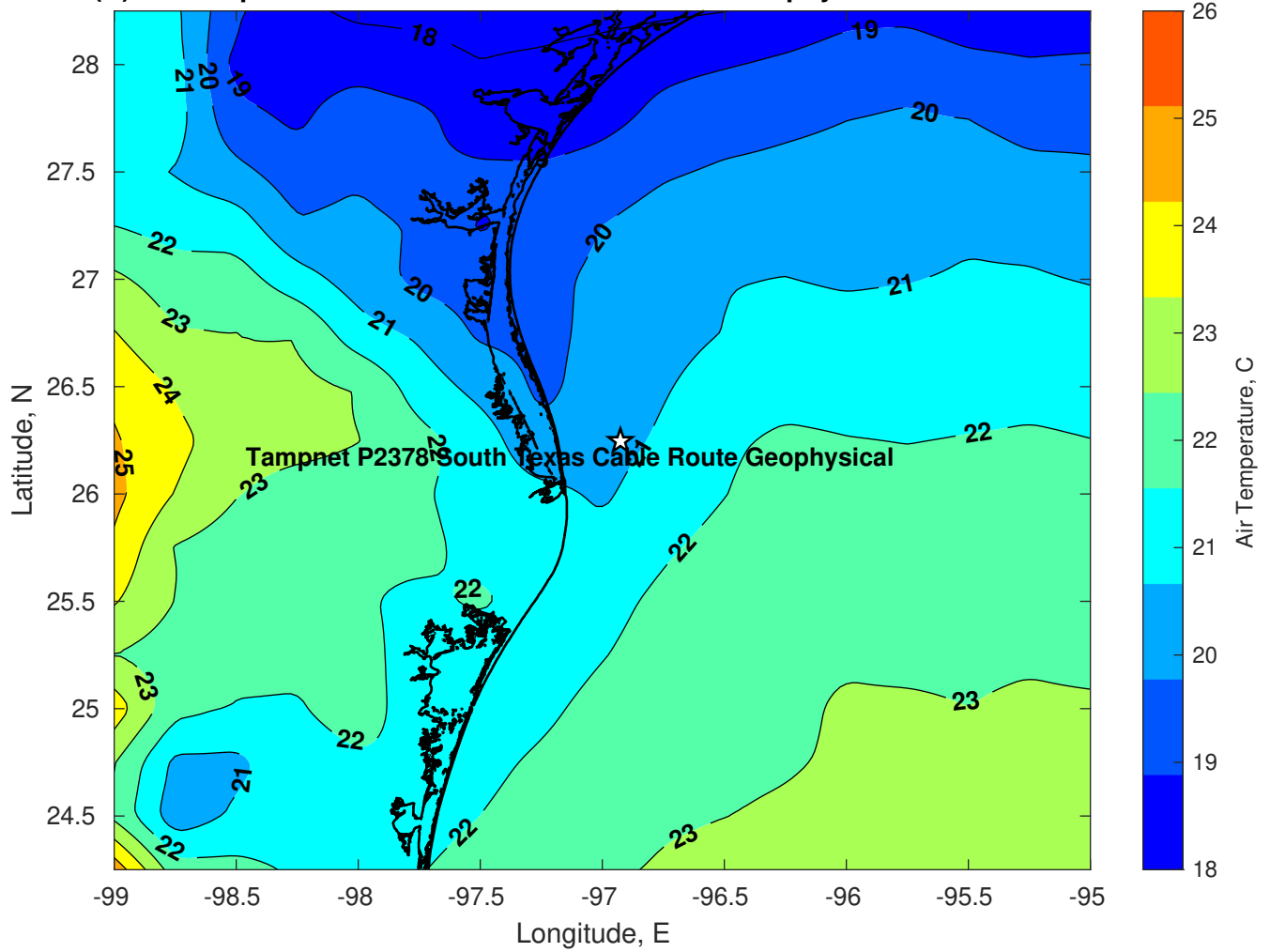
Pressure (mb) for Tampnet P2378 South Texas Cable Route Geophysical at 19-Feb-2025 00:00:00



Air Temperature (C) for Tampnet P2378 South Texas Cable Route Geophysical at 17-Feb-2025



Air Temperature (C) for Tampnet P2378 South Texas Cable Route Geophysical at 17-Feb-2025



Air Temperature (C) for Tampnet P2378 South Texas Cable Route Geophysical at 17-Feb-2025

