

\*\*\*\*\*

Marine Weather Forecast for CSA (ONHYM) PPL EBS - Cote d'Ivoire  
Forecast valid as of 19-Feb-2025 0900 GMT

\*\*\*\*\*

All times are local.

Today

Winds: N, 5-10 kts.  
Waves: N, 3-4 feet, 14-15 sec.  
No currents available.

Tonight

Winds: N, 5-10 kts.  
Waves: N, 3-4 feet, 14-15 sec.  
No currents available.

Thursday

Winds: NW, 10-15 kts.  
Waves: N, 3-4 feet, 13-14 sec.  
No currents available.

Thursday Night

Winds: NW, 10-15 kts.  
Waves: N, 3-4 feet, 12-13 sec.  
No currents available.

Friday

Winds: NW, 15-20 kts.  
Waves: N, 3-4 feet, 12-13 sec.  
No currents available.

Friday Night

Winds: NW, 10-15 kts.  
Waves: N, 3-4 feet, 12-13 sec.  
No currents available.

Saturday

Winds: NW, 10-15 kts.  
Waves: N, 3-4 feet, 12-13 sec.  
No currents available.

Saturday Night

Winds: NW, 10-15 kts.  
Waves: N, 3-4 feet, 11-12 sec.  
No currents available.

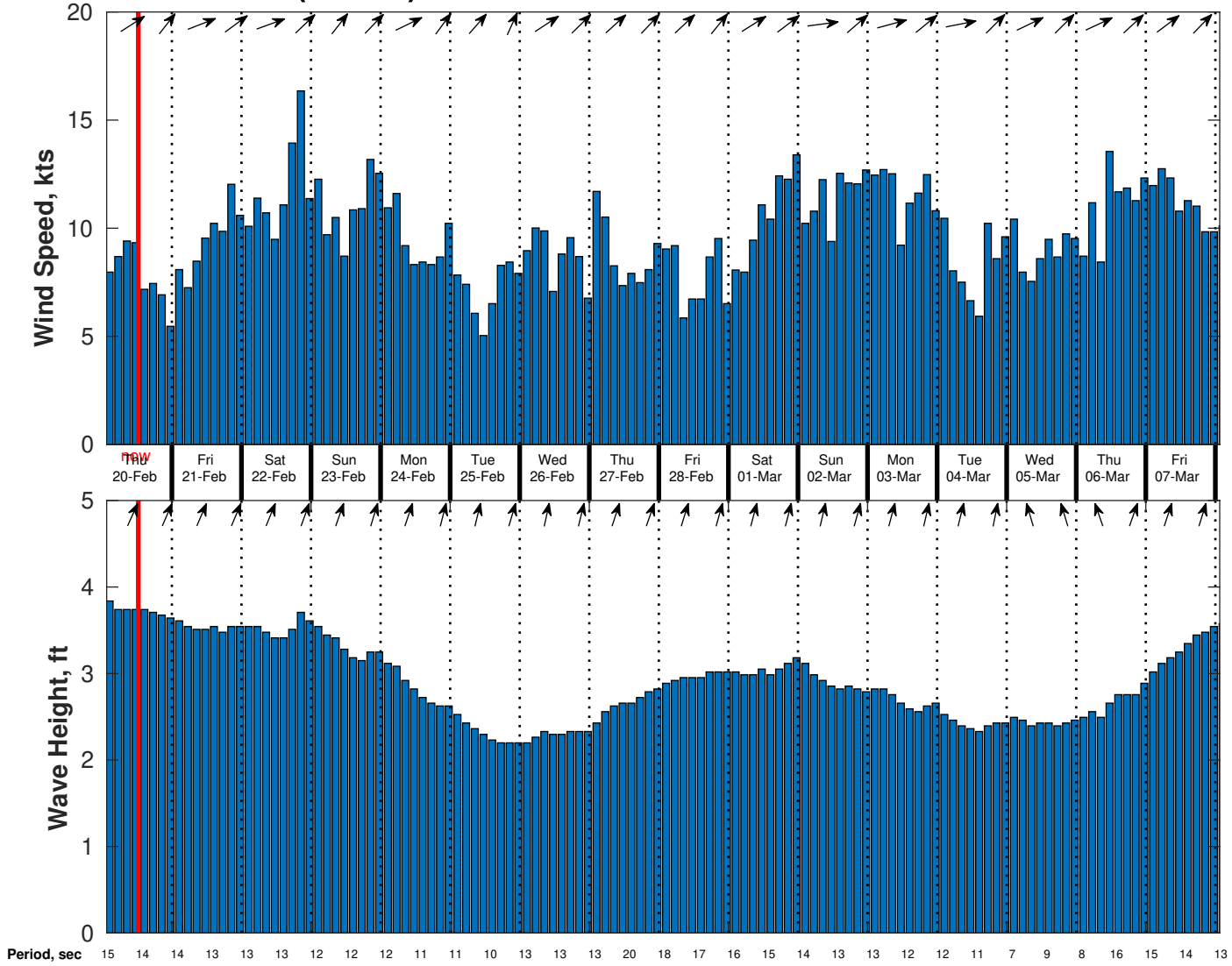
Sunday

Winds: NW, 5-10 kts.  
Waves: N, 2-3 feet, 11-12 sec.  
No currents available.

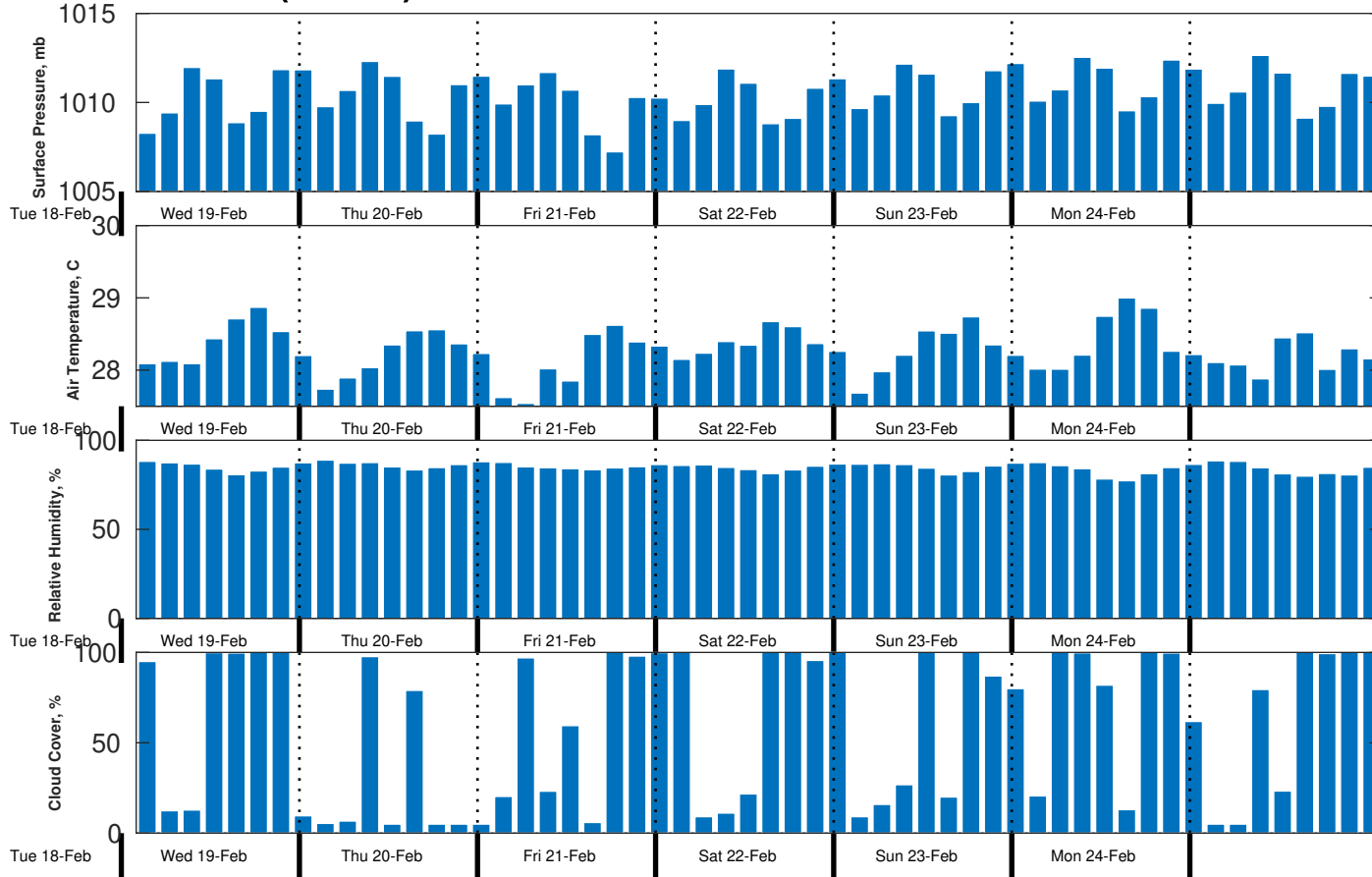
Sunday Night

Winds: N, 10-15 kts.  
Waves: N, 2-3 feet, 10-11 sec.  
No currents available.

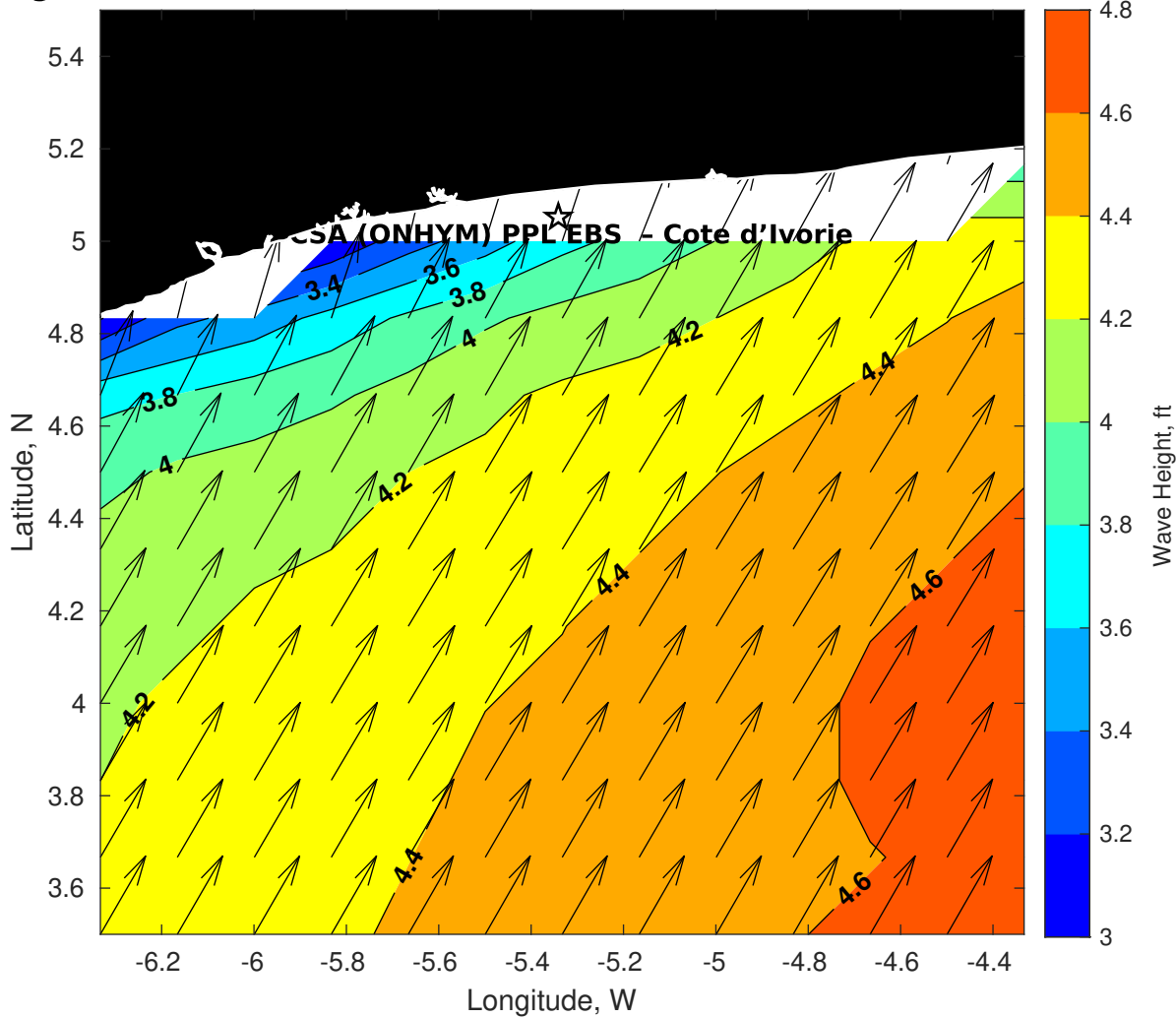
**Wind & Wave Forecast for CSA (ONHYM) PPL EBS - Cote d'Ivoire from 19-Feb-2025 01:00:00 to 07-Mar-2025 01:00:00**



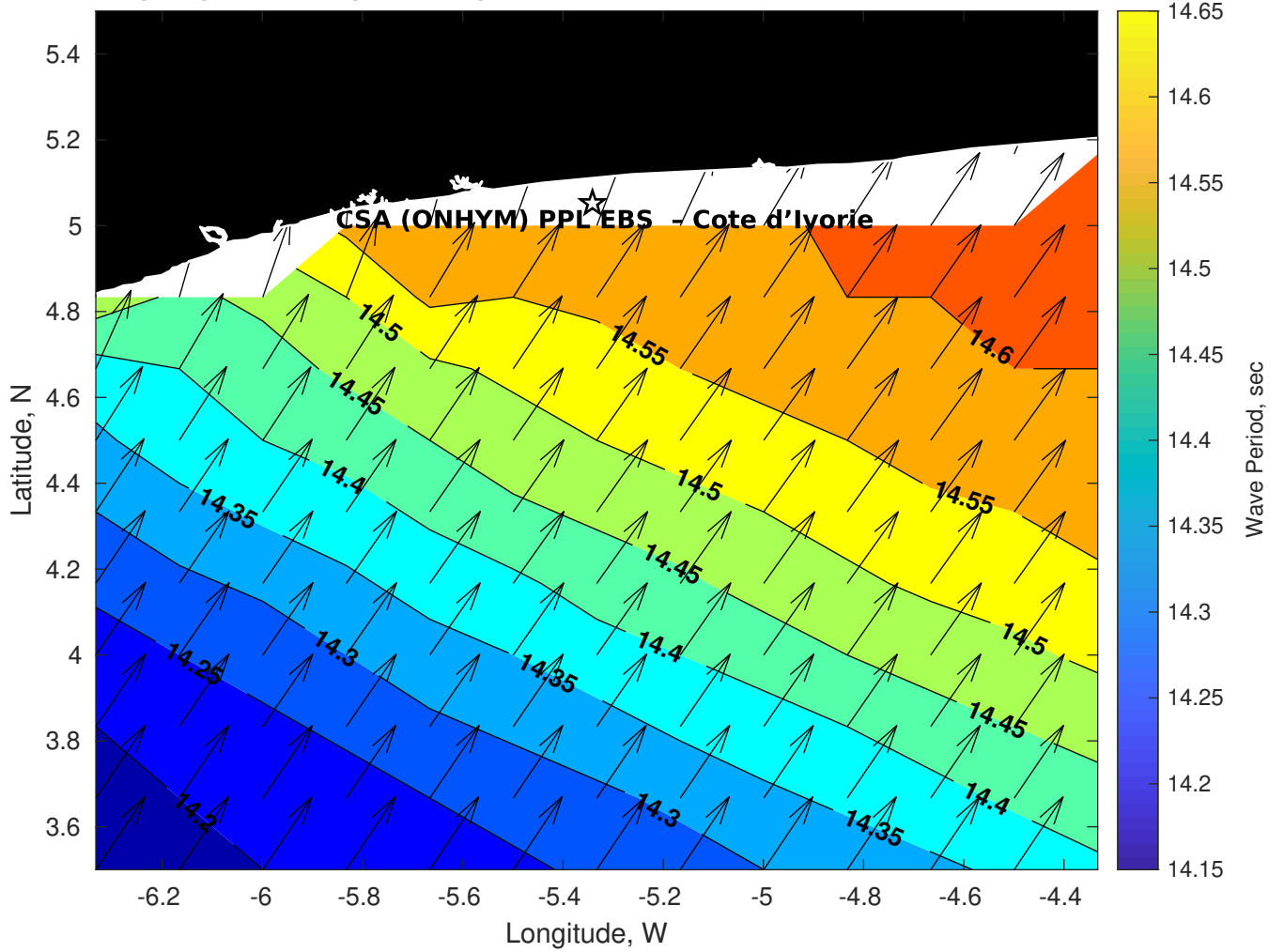
### Met Forecast for CSA (ONHYM) PPL EBS - Cote d'Ivoire from 19-Feb-2025 00:00:00 to 26-Feb-2025 00:00:00



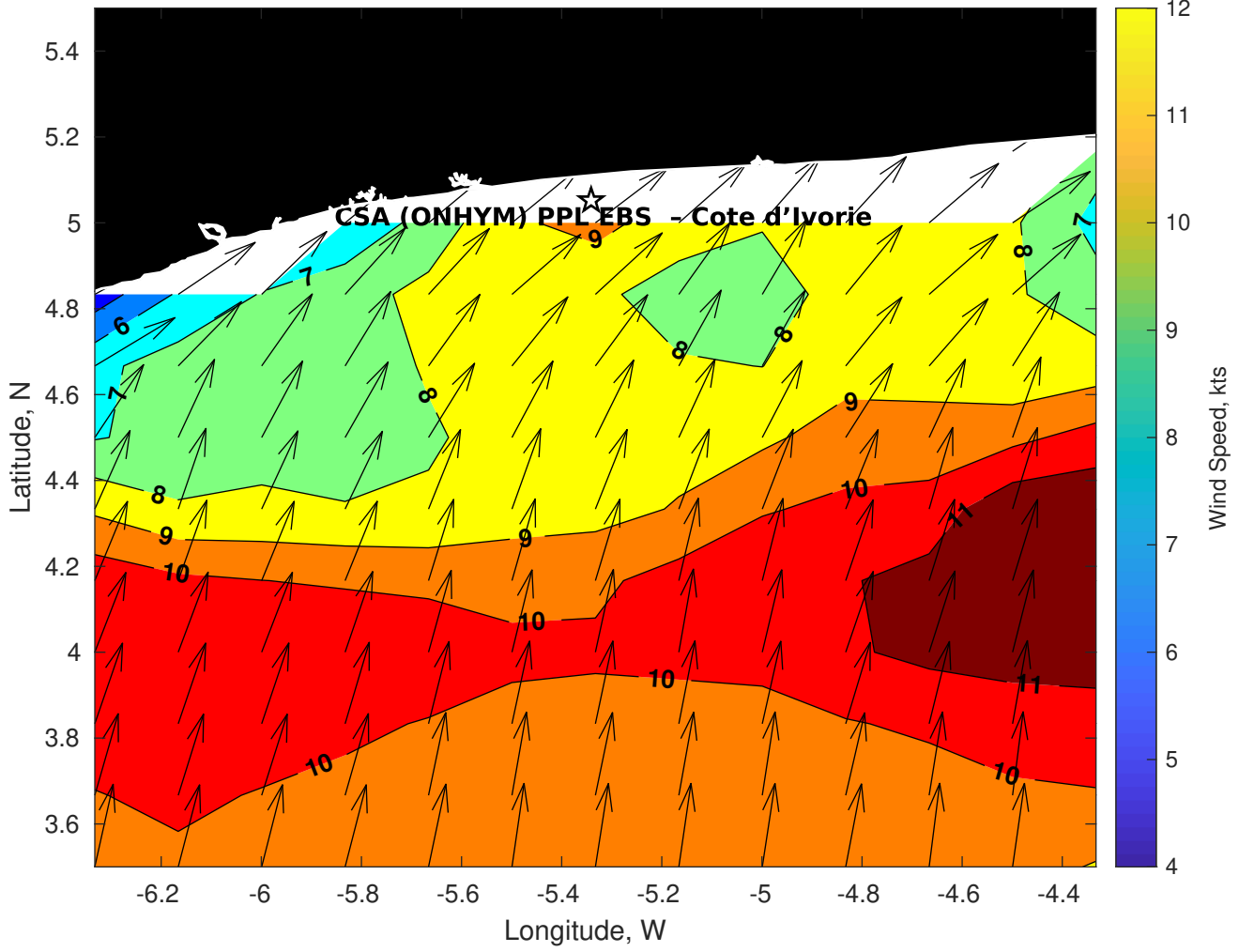
**Wave Height (ft) for CSA (ONHYM) PPL EBS - Cote d'Ivoire at 19-Feb-2025 09:00:00**



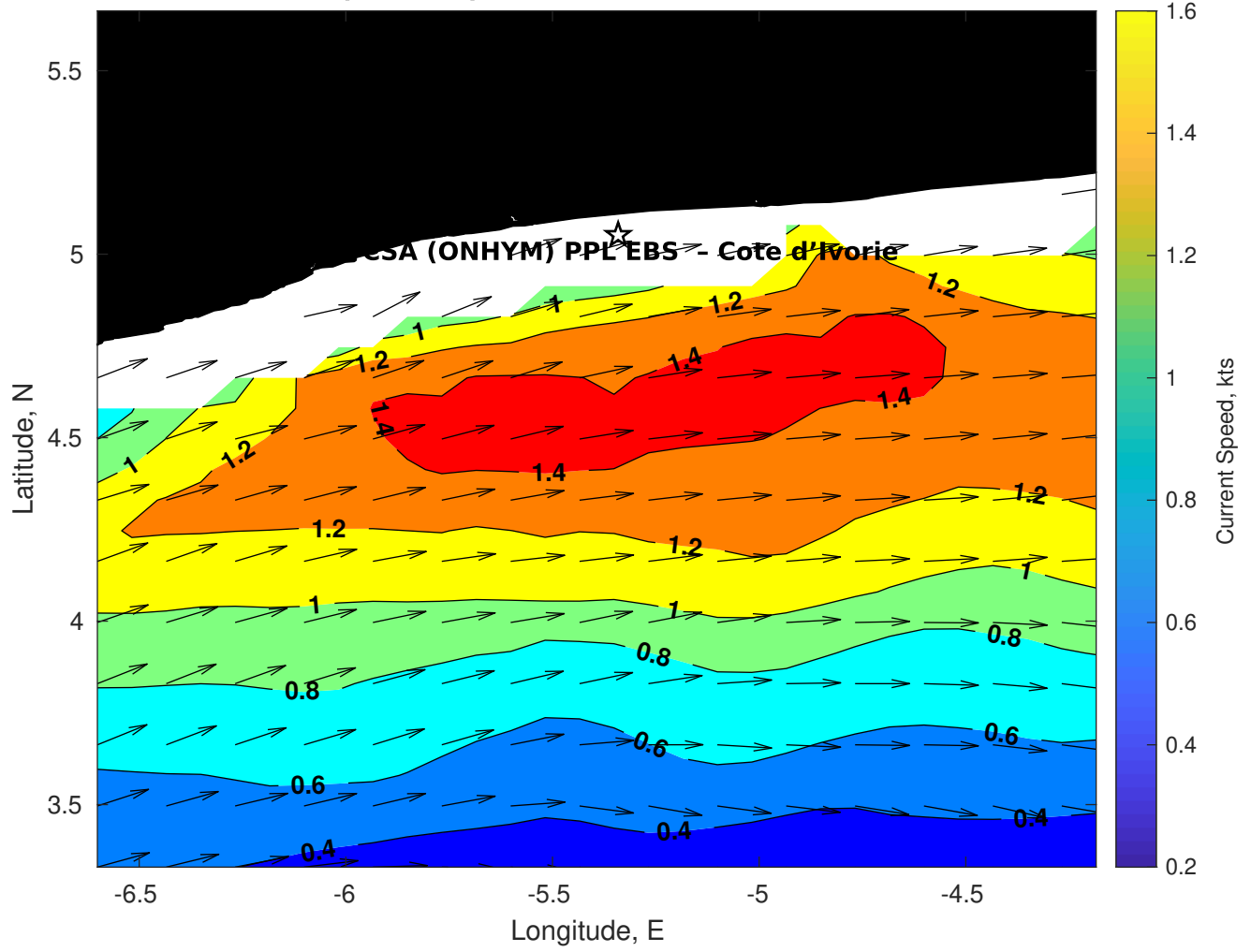
**Wave Period (sec) for CSA (ONHYM) PPL EBS - Cote d'Ivoire at 19-Feb-2025 09:00:00**



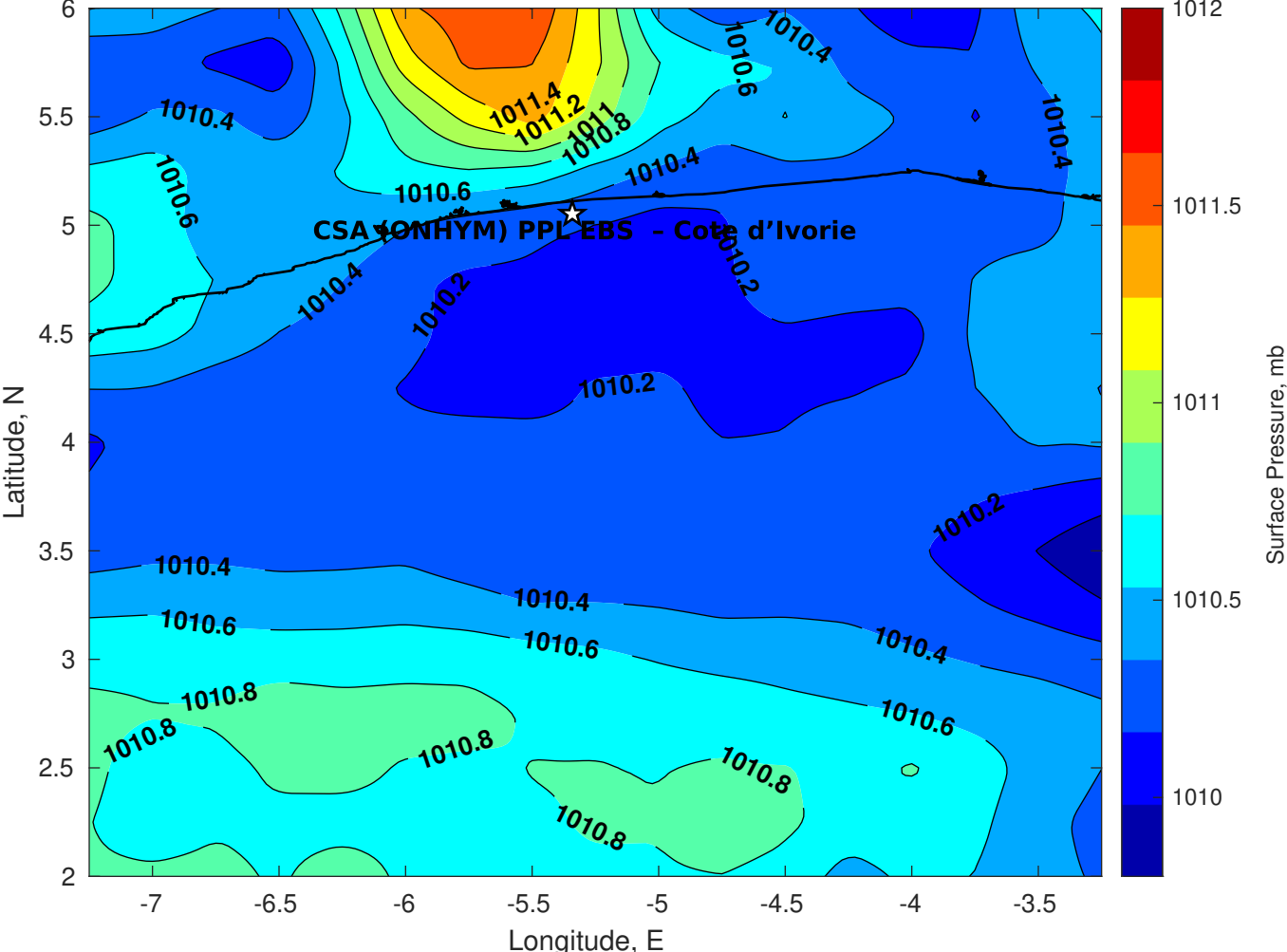
**Winds (kts) for CSA (ONHYM) PPL EBS - Cote d'Ivoire at 19-Feb-2025 09:00:00**



**Surface Currents for CSA (ONHYM) PPL EBS - Cote d'Ivoire at 18-Feb-2025 00:00:00**

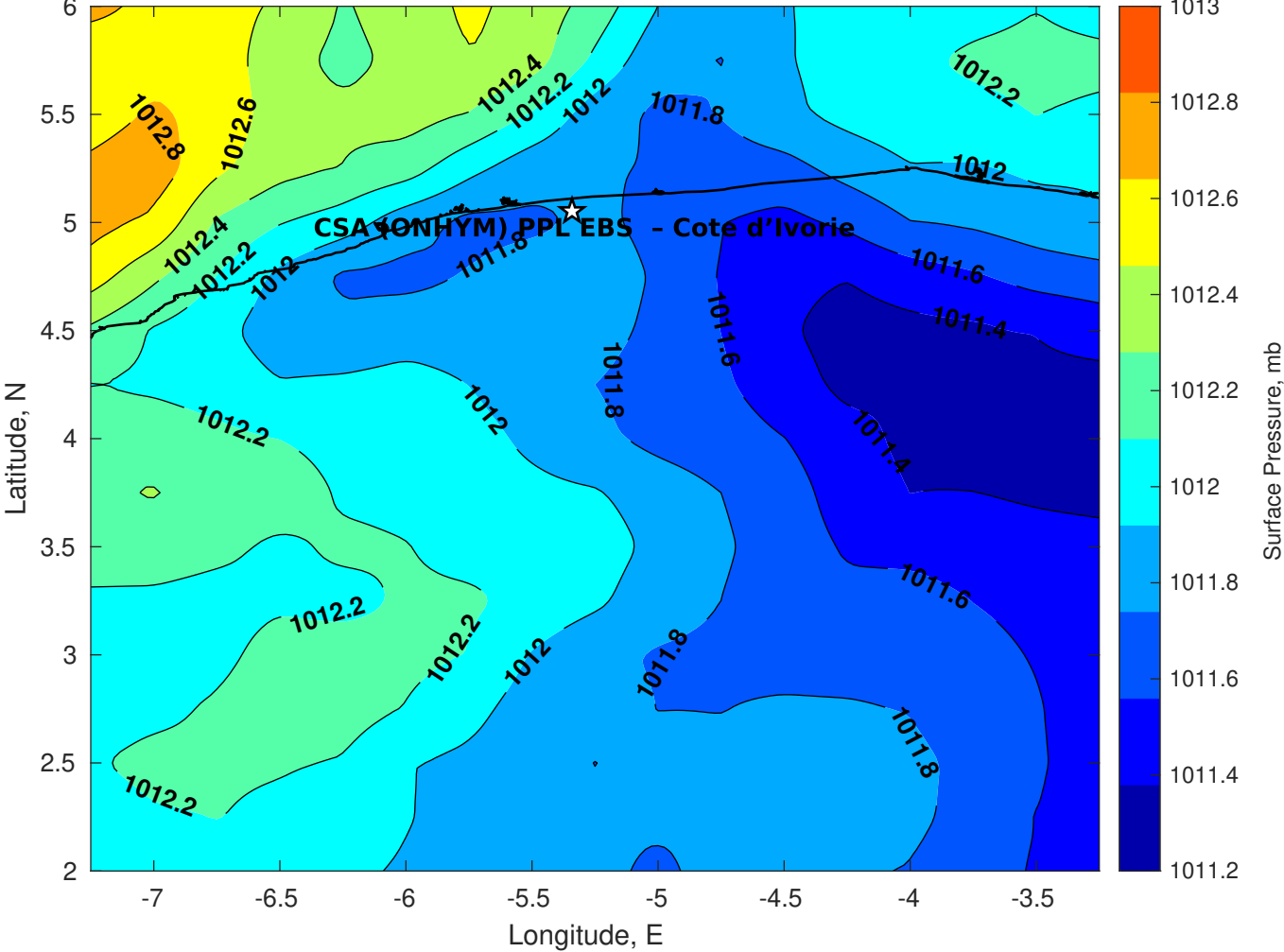


Surface Pressure (mb) for CSA (ONHYM) PPL EBS - Cote d'Ivoire at 19-Feb-2025 00:00:00

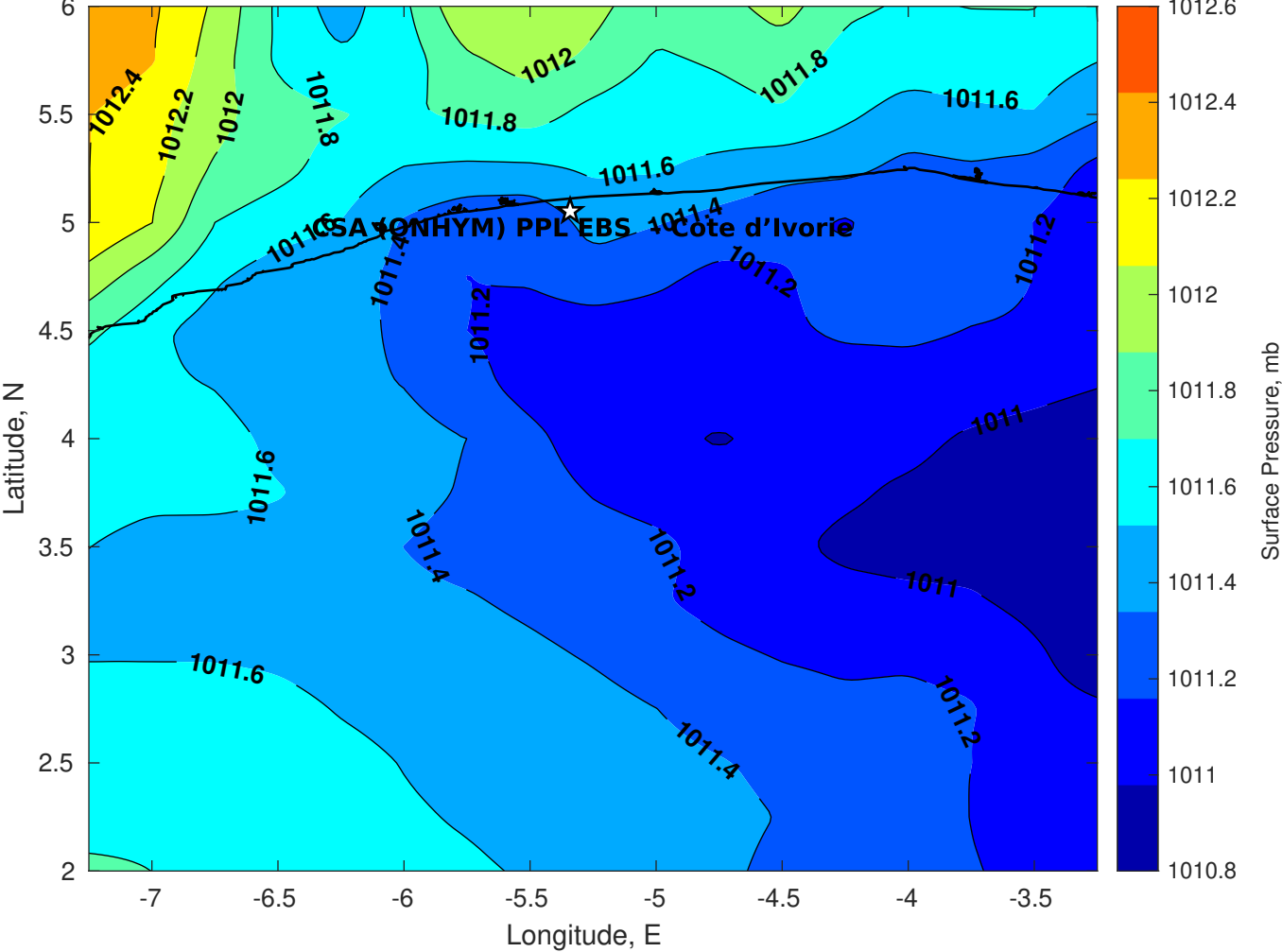




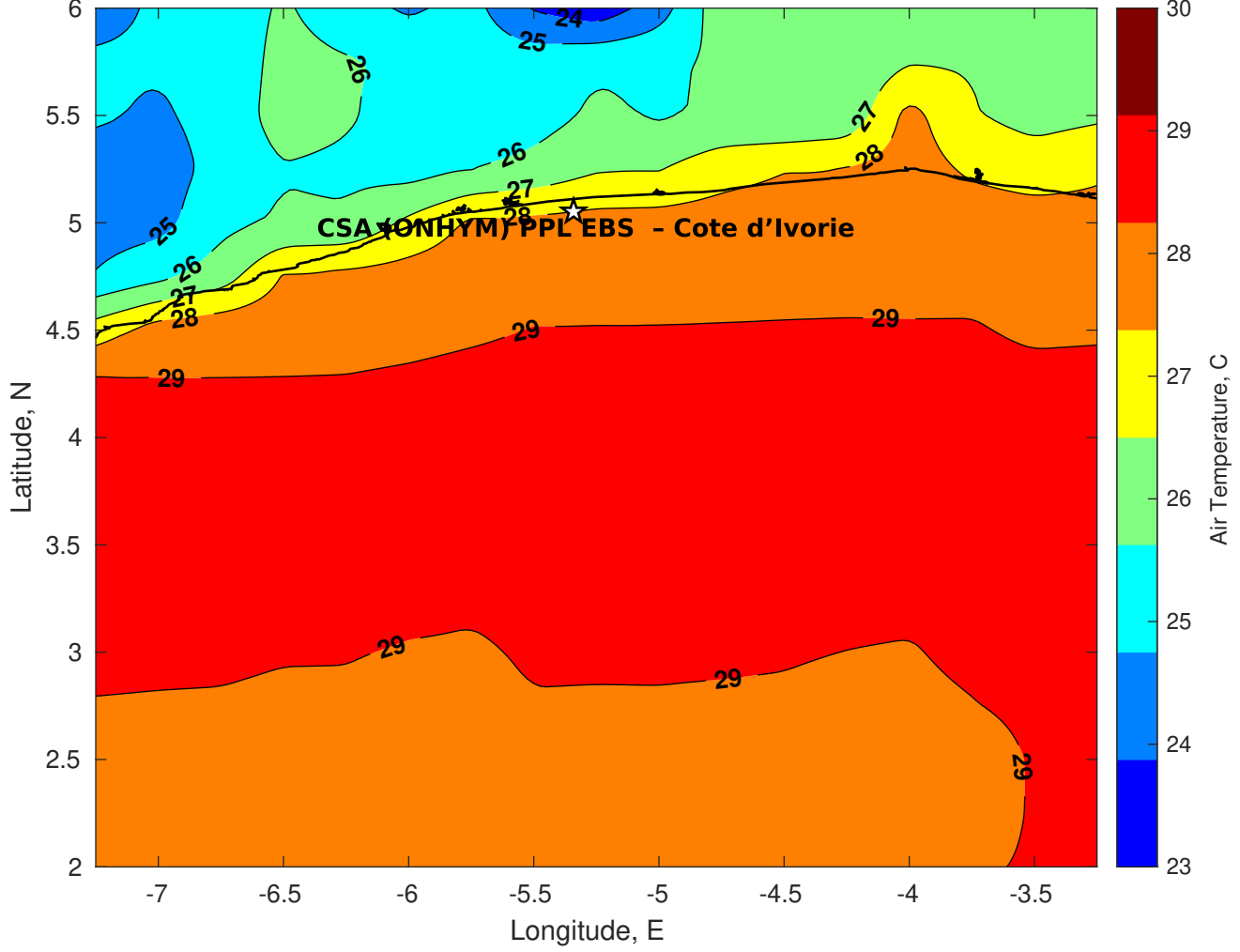
Surface Pressure (mb) for CSA (ONHYM) PPL EBS - Cote d'Ivoire at 20-Feb-2025 00:00:00



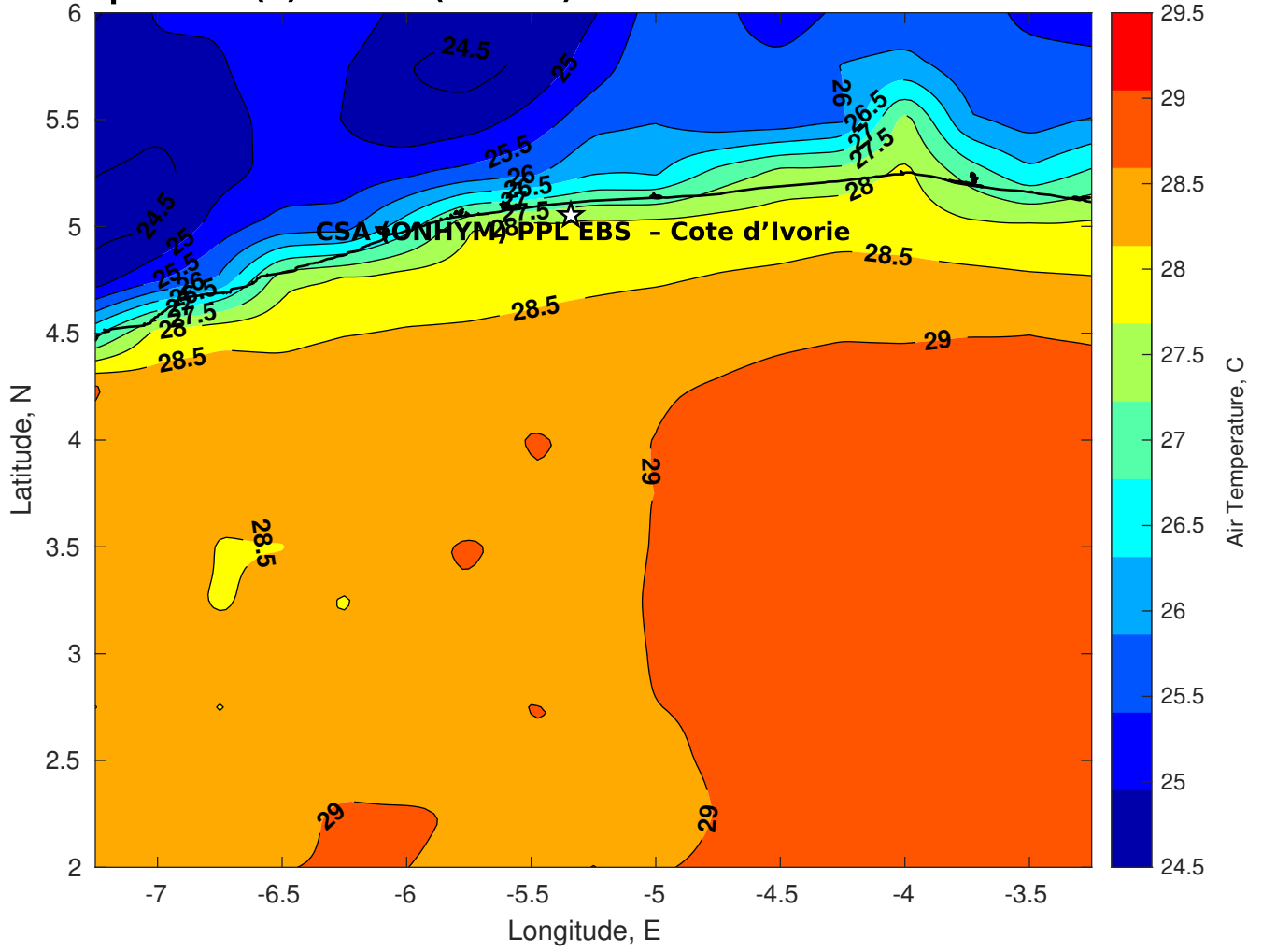
Surface Pressure (mb) for CSA (ONHYM) PPL EBS - Cote d'Ivoire at 21-Feb-2025 00:00:00



**Air Temperature (C) for CSA (ONHYM) PPL EBS - Cote d'Ivoire at 19-Feb-2025**



**Air Temperature (C) for CSA (ONHYM) PPL EBS - Cote d'Ivoire at 19-Feb-2025**



**Air Temperature (C) for CSA (ONHYM) PPL EBS - Cote d'Ivoire at 19-Feb-2025**

