

\*\*\*\*\*

Marine Weather Forecast for CSA (ONHYM) PPL EBS - Western Sahara  
Forecast valid as of 19-Feb-2025 0900 GMT

\*\*\*\*\*

All times are local.

Today

Winds: NE, 20-25 kts.  
Waves: NW, 10-11 feet, 15-16 sec.  
No currents available.

Tonight

Winds: NE, 20-25 kts.  
Waves: NW, 9-10 feet, 15-16 sec.  
No currents available.

Thursday

Winds: NE, 20-25 kts.  
Waves: NW, 9-10 feet, 14-15 sec.  
No currents available.

Thursday Night

Winds: NE, 20-25 kts.  
Waves: NW, 7-8 feet, 13-14 sec.  
No currents available.

Friday

Winds: NE, 15-20 kts.  
Waves: NW, 8-9 feet, 19-20 sec.  
No currents available.

Friday Night

Winds: NE, 20-25 kts.  
Waves: NW, 9-10 feet, 18-19 sec.  
No currents available.

Saturday

Winds: NE, 15-20 kts.  
Waves: NW, 9-10 feet, 16-17 sec.  
No currents available.

Saturday Night

Winds: NE, 20-25 kts.  
Waves: NW, 8-9 feet, 15-16 sec.  
No currents available.

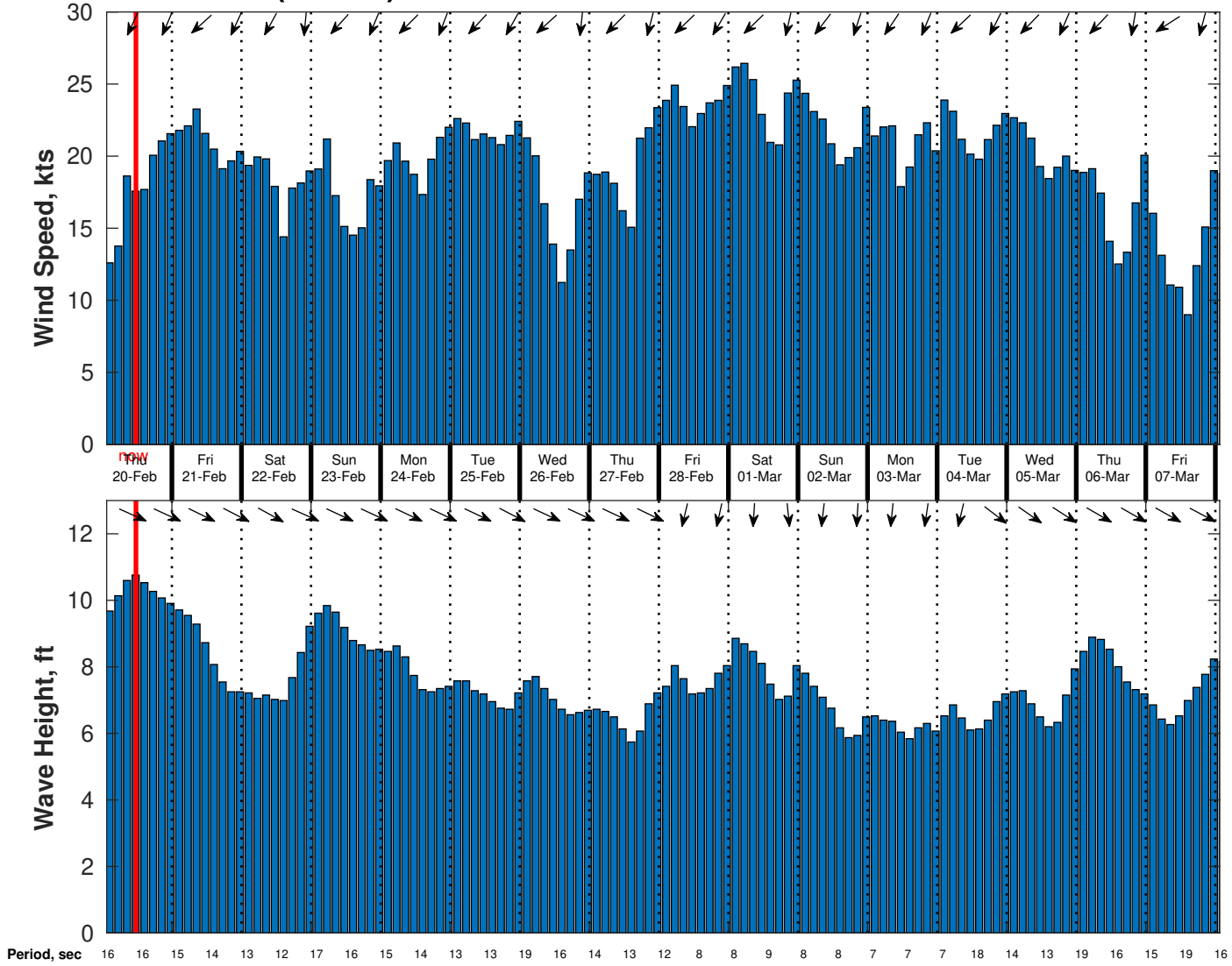
Sunday

Winds: NE, 20-25 kts.  
Waves: NW, 8-9 feet, 14-15 sec.  
No currents available.

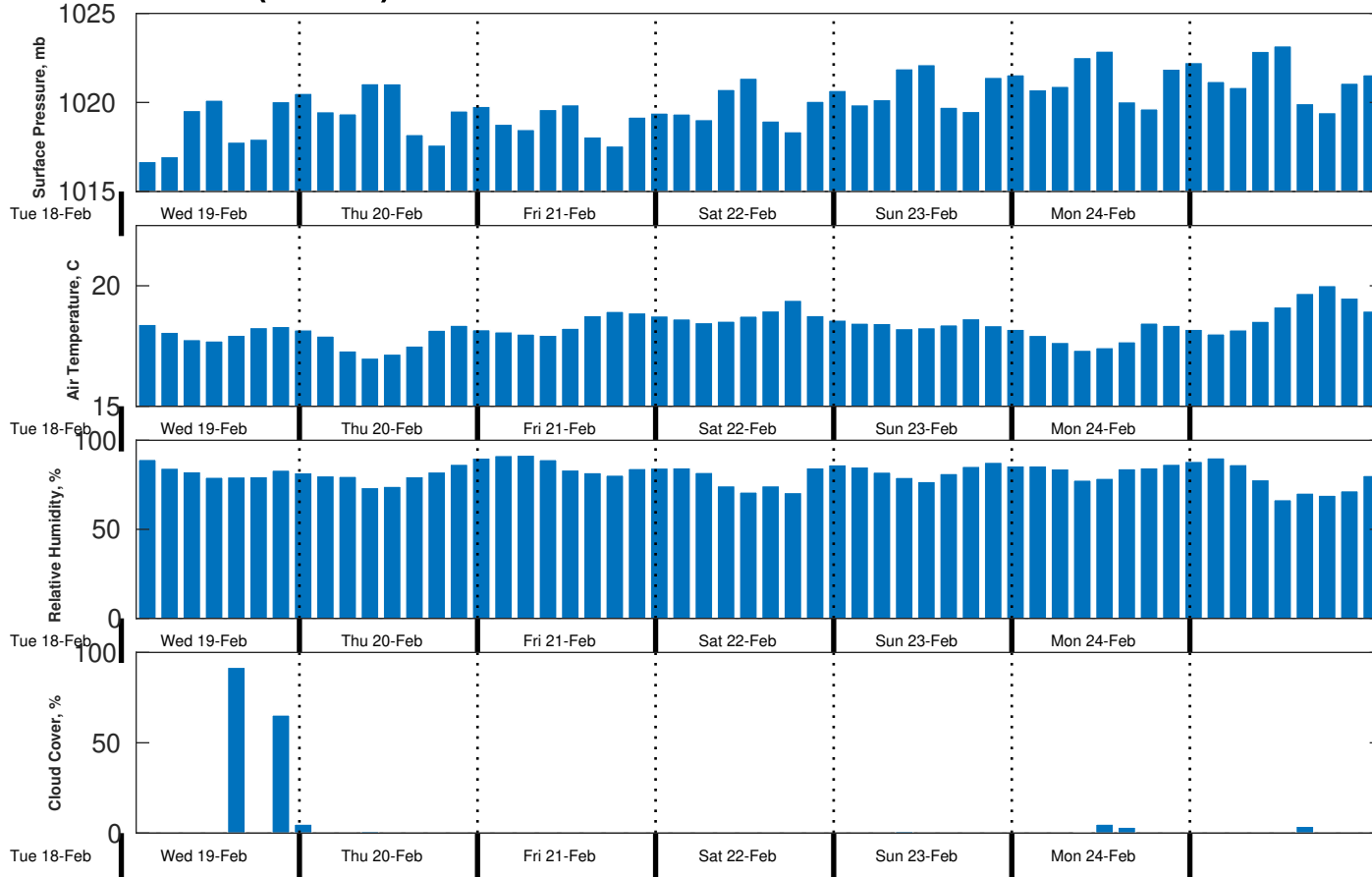
Sunday Night

Winds: NE, 20-25 kts.  
Waves: NW, 7-8 feet, 13-14 sec.  
No currents available.

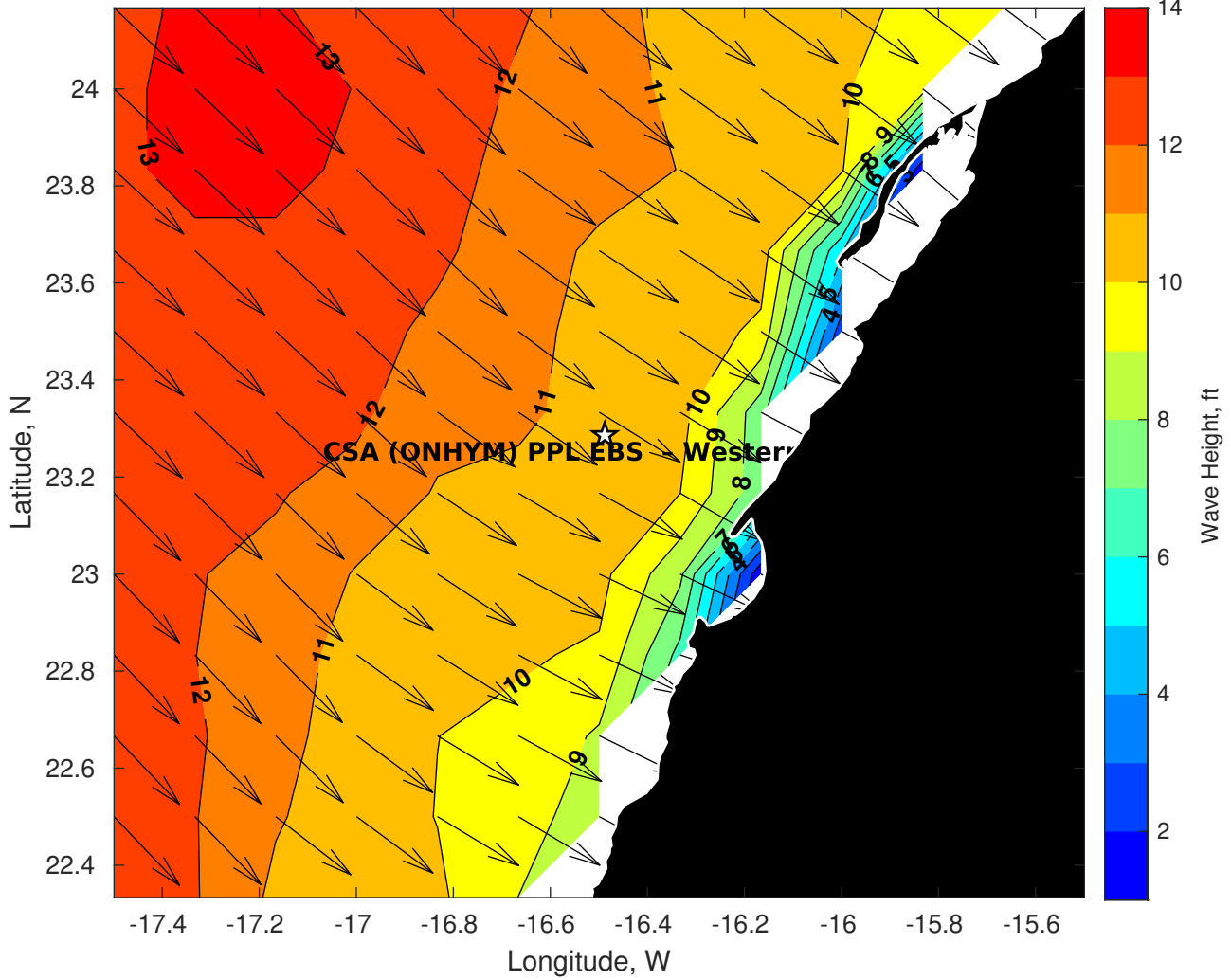
**Wind & Wave Forecast for CSA (ONHYM) PPL EBS - Western Sahara from 19-Feb-2025 01:00:00 to 07-Mar-2025 01:00:00**



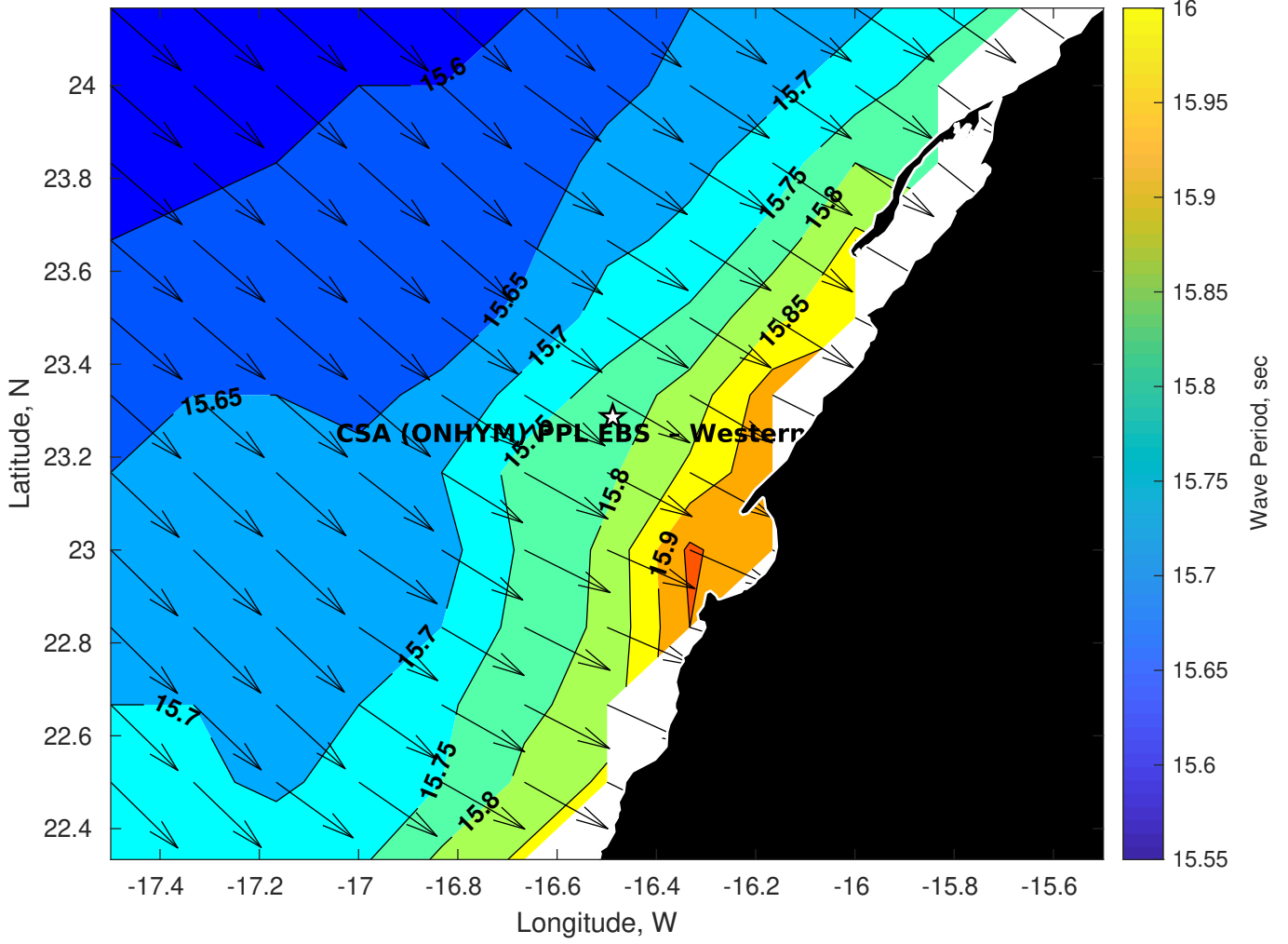
**Met Forecast for CSA (ONHYM) PPL EBS - Western Sahara from 19-Feb-2025 00:00:00 to 26-Feb-2025 00:00:00**



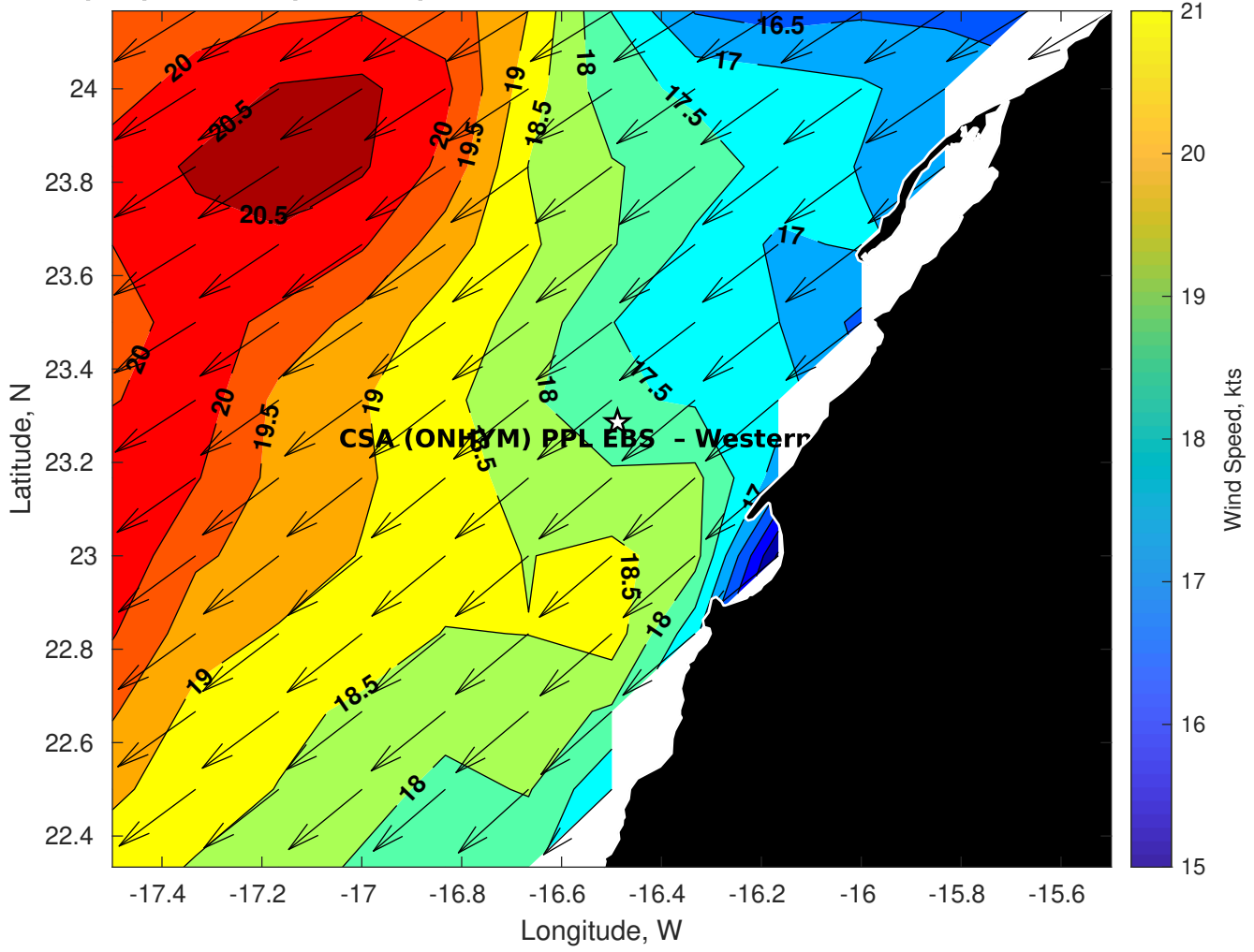
**Wave Height (ft) for CSA (ONHYM) PPL EBS - Western Sahara at 19-Feb-2025 09:00:00**



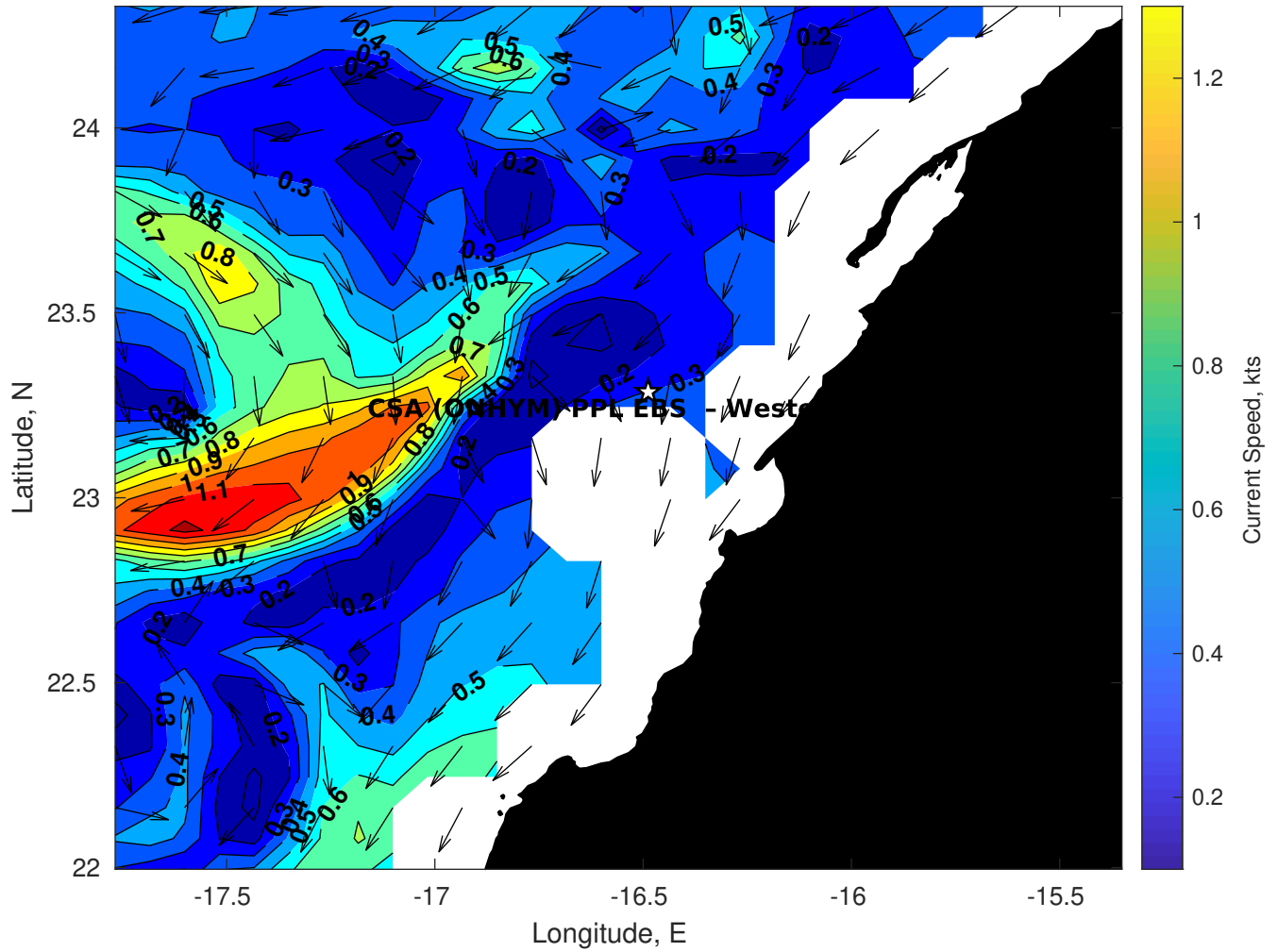
**Wave Period (sec) for CSA (ONHYM) PPL EBS - Western Sahara at 19-Feb-2025 09:00:00**



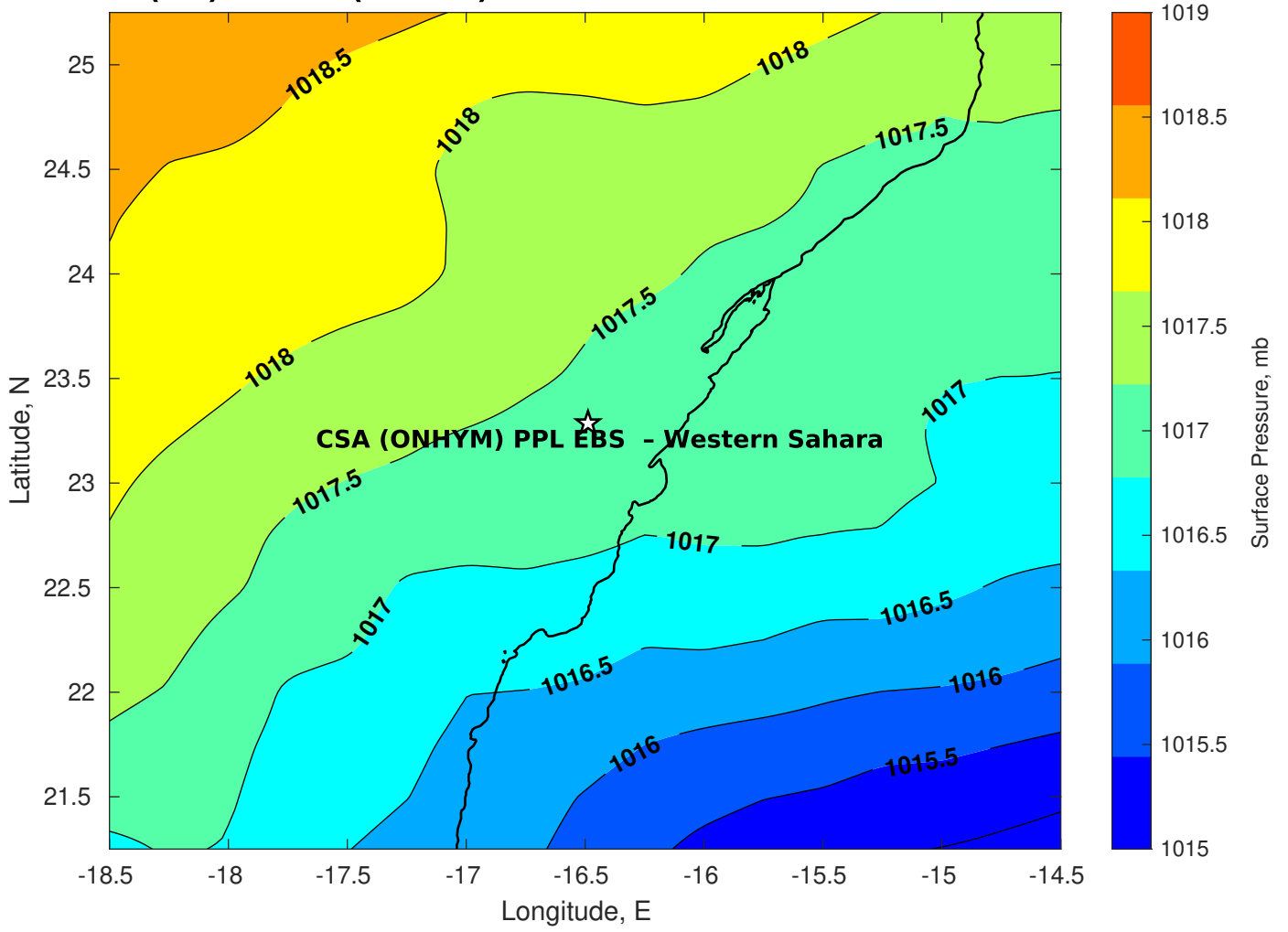
**Winds (kts) for CSA (ONHYM) PPL EBS - Western Sahara at 19-Feb-2025 09:00:00**



### Surface Currents for CSA (ONHYM) PPL EBS - Western Sahara at 18-Feb-2025 00:00:00

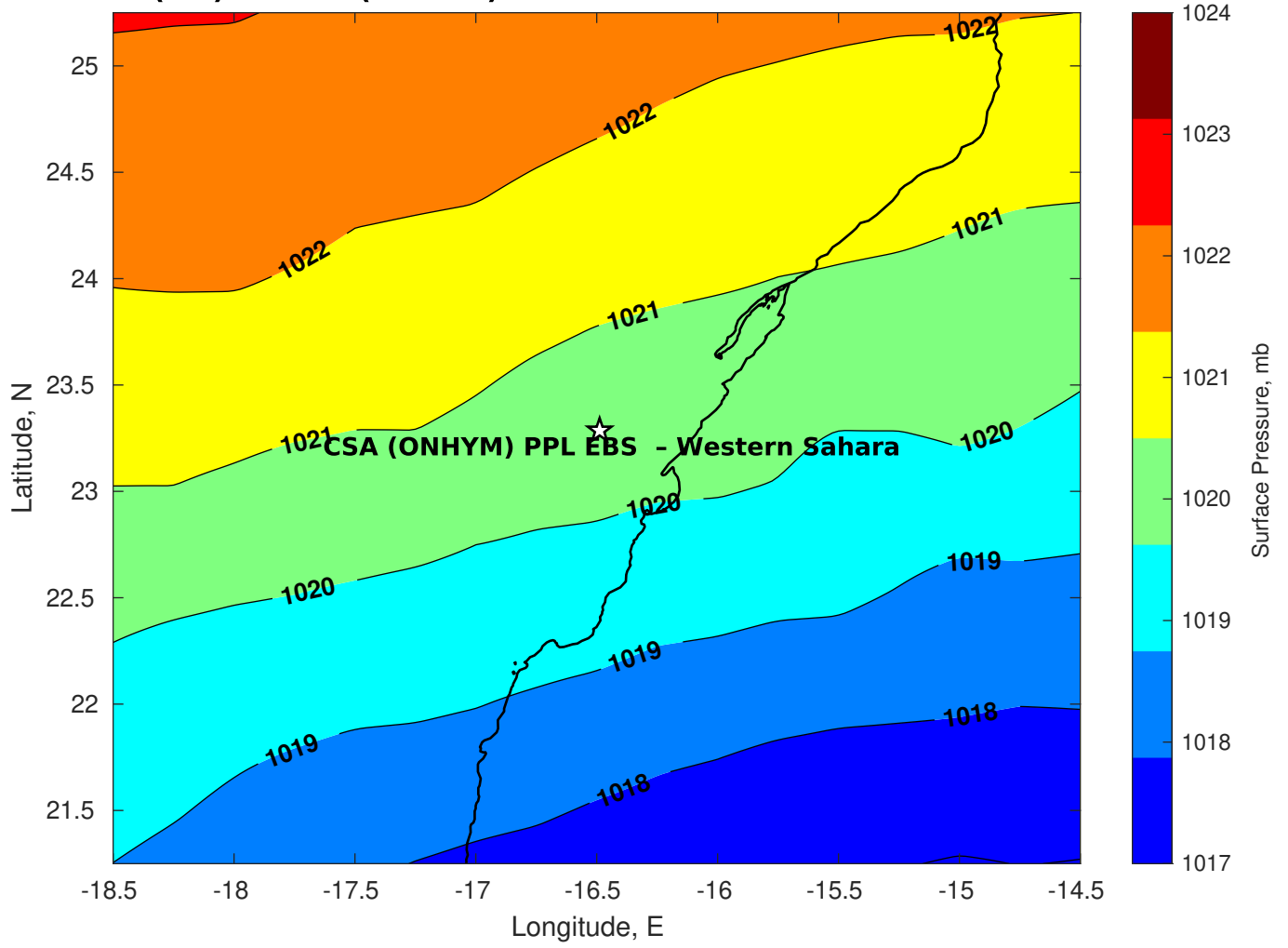


**Surface Pressure (mb) for CSA (ONHYM) PPL EBS - Western Sahara at 19-Feb-2025 00:00:00**

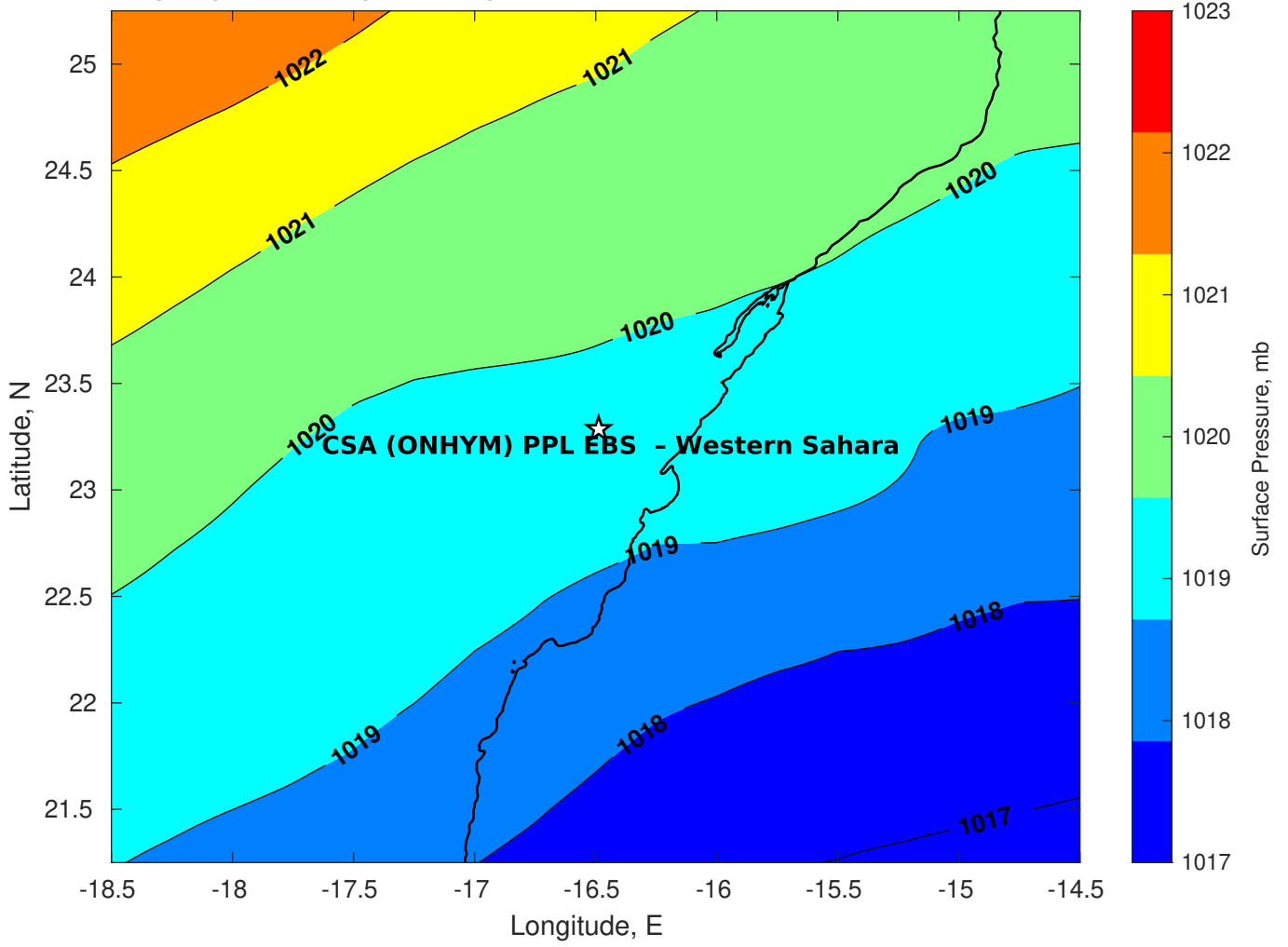




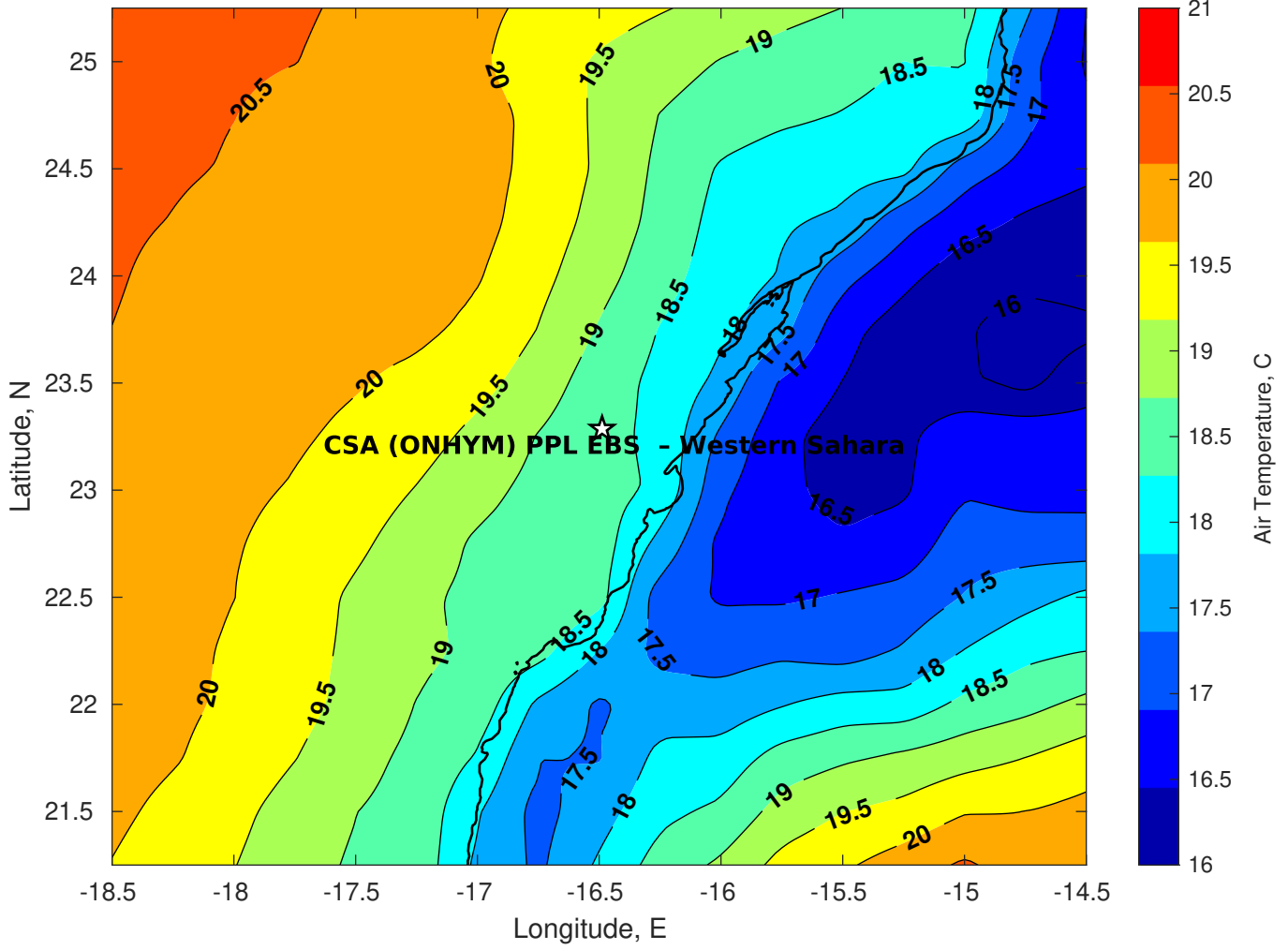
Surface Pressure (mb) for CSA (ONHYM) PPL EBS - Western Sahara at 20-Feb-2025 00:00:00



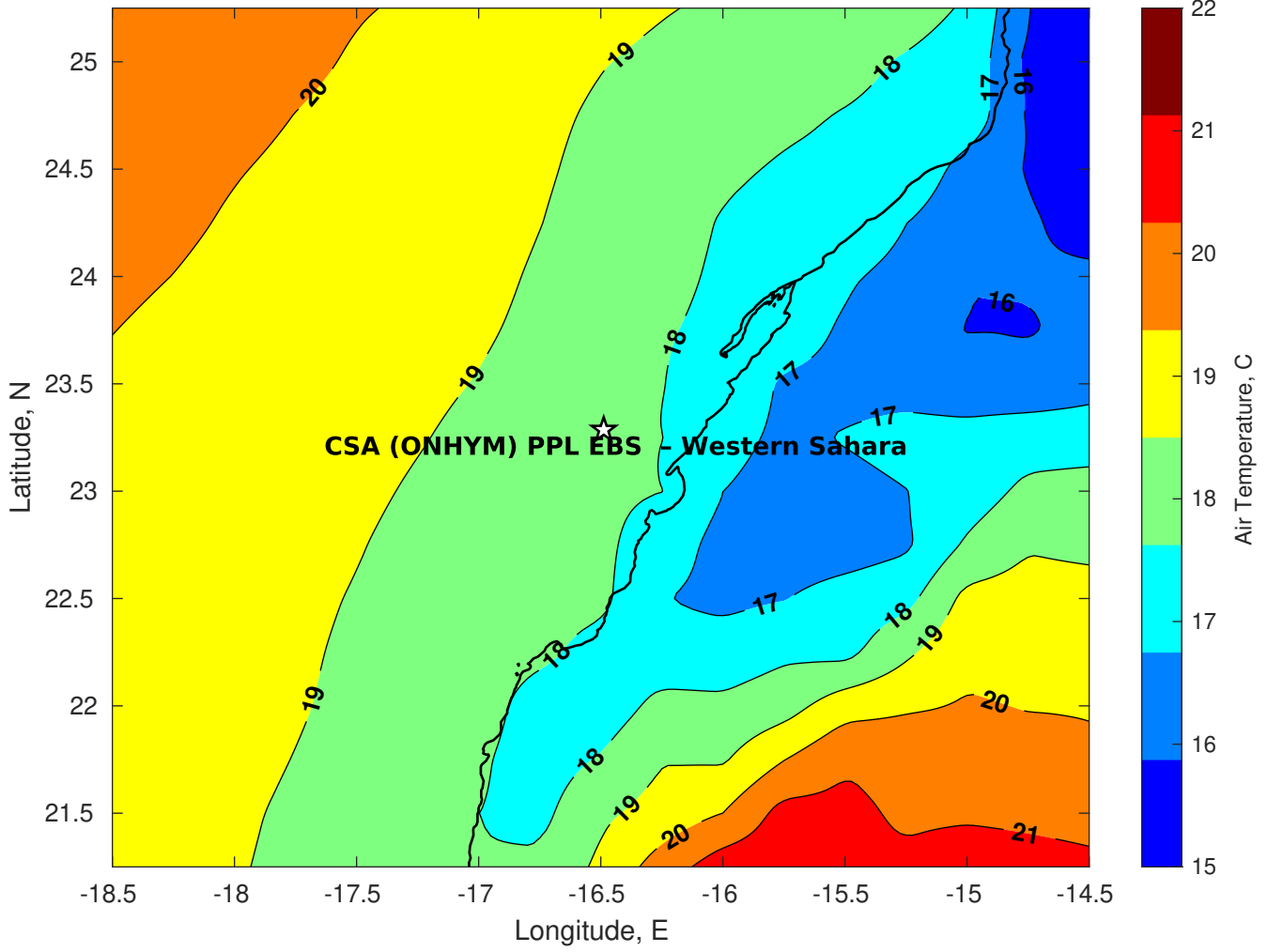
**Surface Pressure (mb) for CSA (ONHYM) PPL EBS - Western Sahara at 21-Feb-2025 00:00:00**



**Air Temperature (C) for CSA (ONHYM) PPL EBS - Western Sahara at 19-Feb-2025**



**Air Temperature (C) for CSA (ONHYM) PPL EBS - Western Sahara at 19-Feb-2025**



**Air Temperature (C) for CSA (ONHYM) PPL EBS - Western Sahara at 19-Feb-2025**

