

\*\*\*\*\*

Marine Weather Forecast for CSL Shell Nigeria  
Forecast valid as of 19-Feb-2025 0900 GMT

\*\*\*\*\*

All times are local.

Today

Winds: NW, 10-15 kts.  
Waves: N, 3-4 feet, 15-16 sec.  
No currents available.

Tonight

Winds: NW, 10-15 kts.  
Waves: N, 3-4 feet, 14-15 sec.  
No currents available.

Thursday

Winds: NW, 10-15 kts.  
Waves: N, 3-4 feet, 14-15 sec.  
No currents available.

Thursday Night

Winds: NW, 10-15 kts.  
Waves: N, 3-4 feet, 13-14 sec.  
No currents available.

Friday

Winds: NW, 10-15 kts.  
Waves: N, 3-4 feet, 13-14 sec.  
No currents available.

Friday Night

Winds: NW, 10-15 kts.  
Waves: N, 3-4 feet, 12-13 sec.  
No currents available.

Saturday

Winds: NW, 10-15 kts.  
Waves: N, 3-4 feet, 12-13 sec.  
No currents available.

Saturday Night

Winds: NW, 10-15 kts.  
Waves: N, 3-4 feet, 12-13 sec.  
No currents available.

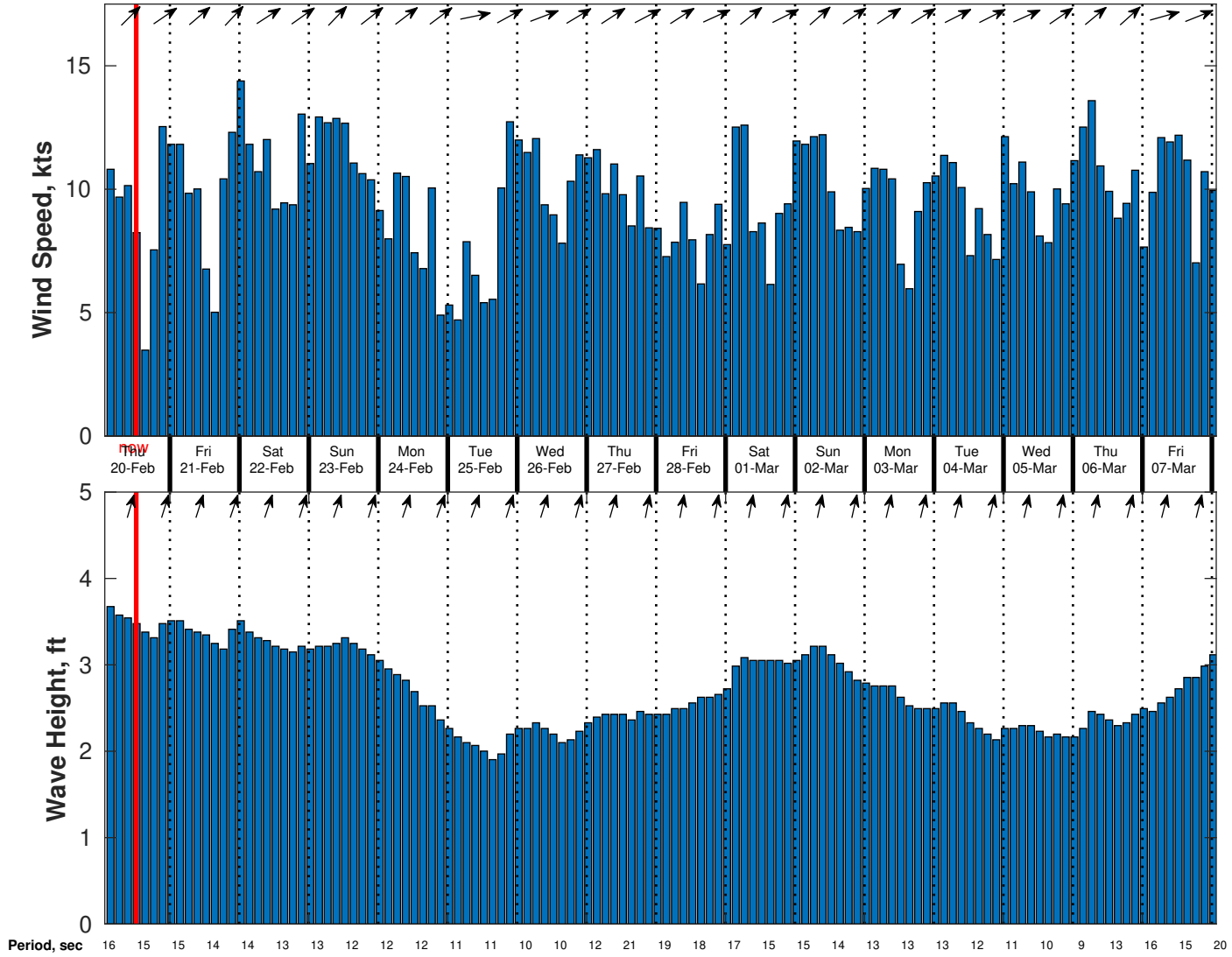
Sunday

Winds: NW, 10-15 kts.  
Waves: N, 2-3 feet, 11-12 sec.  
No currents available.

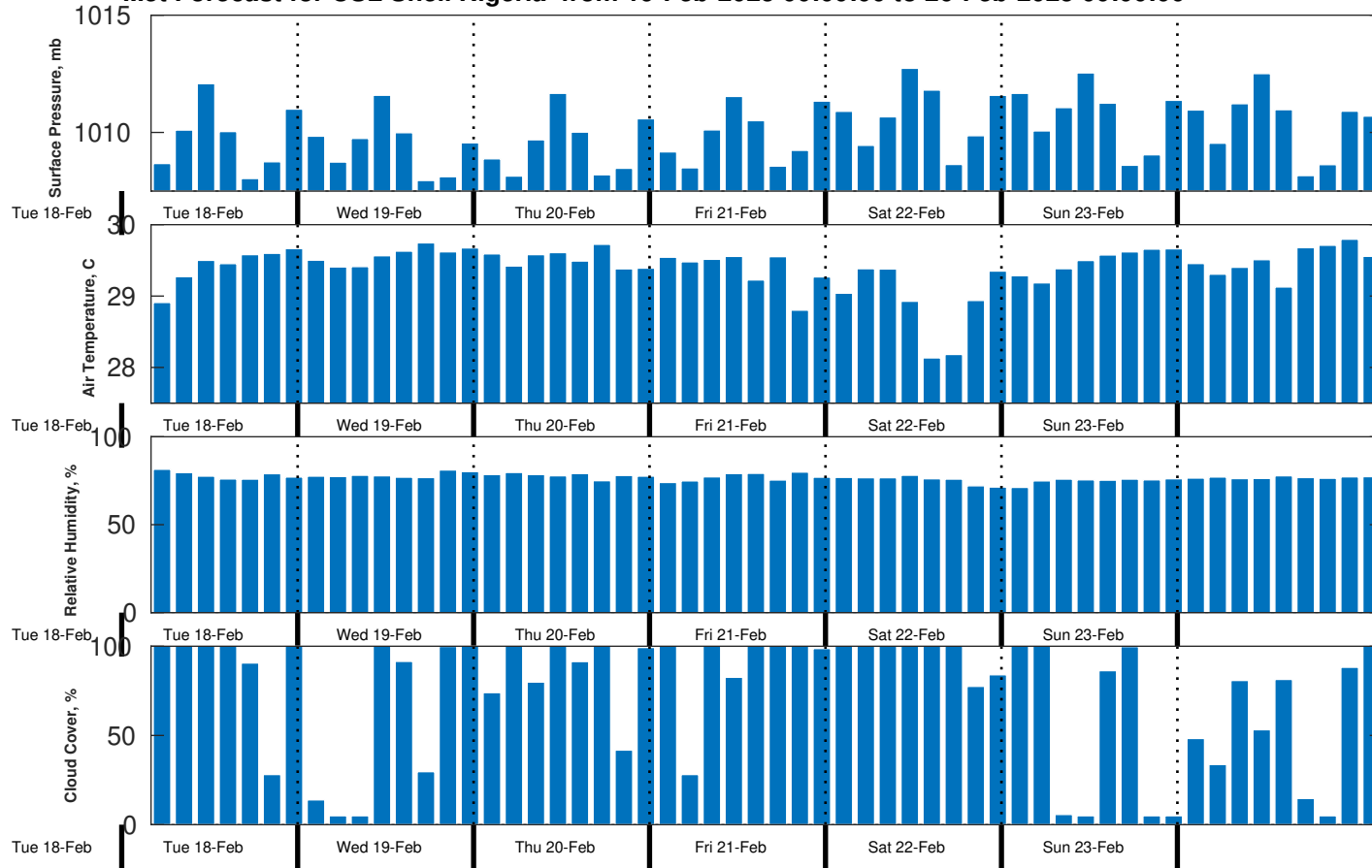
Sunday Night

Winds: NW, 5-10 kts.  
Waves: N, 2-3 feet, 11-12 sec.  
No currents available.

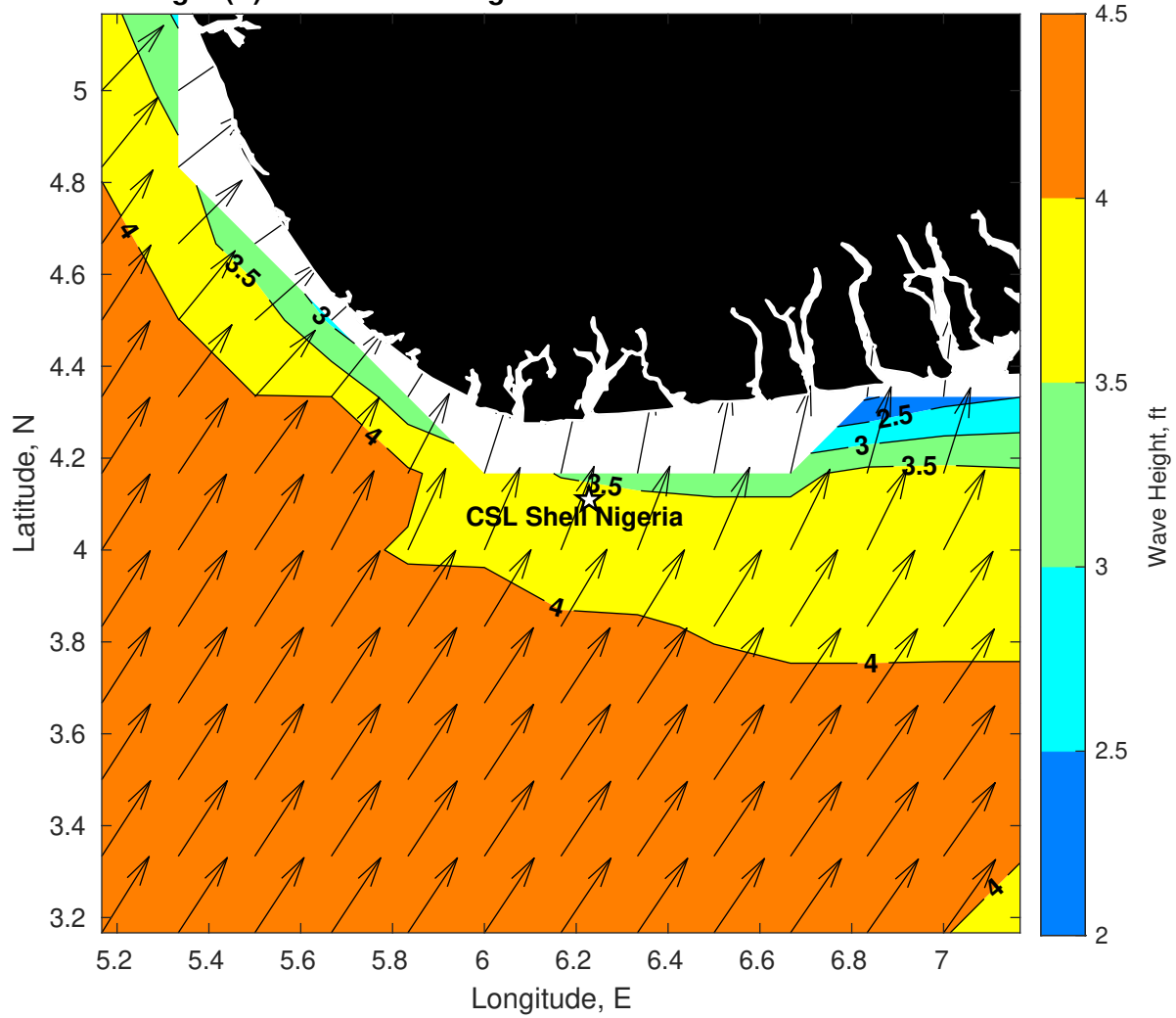
Wind & Wave Forecast for CSL Shell Nigeria from 19-Feb-2025 02:00:00 to 07-Mar-2025 02:00:00



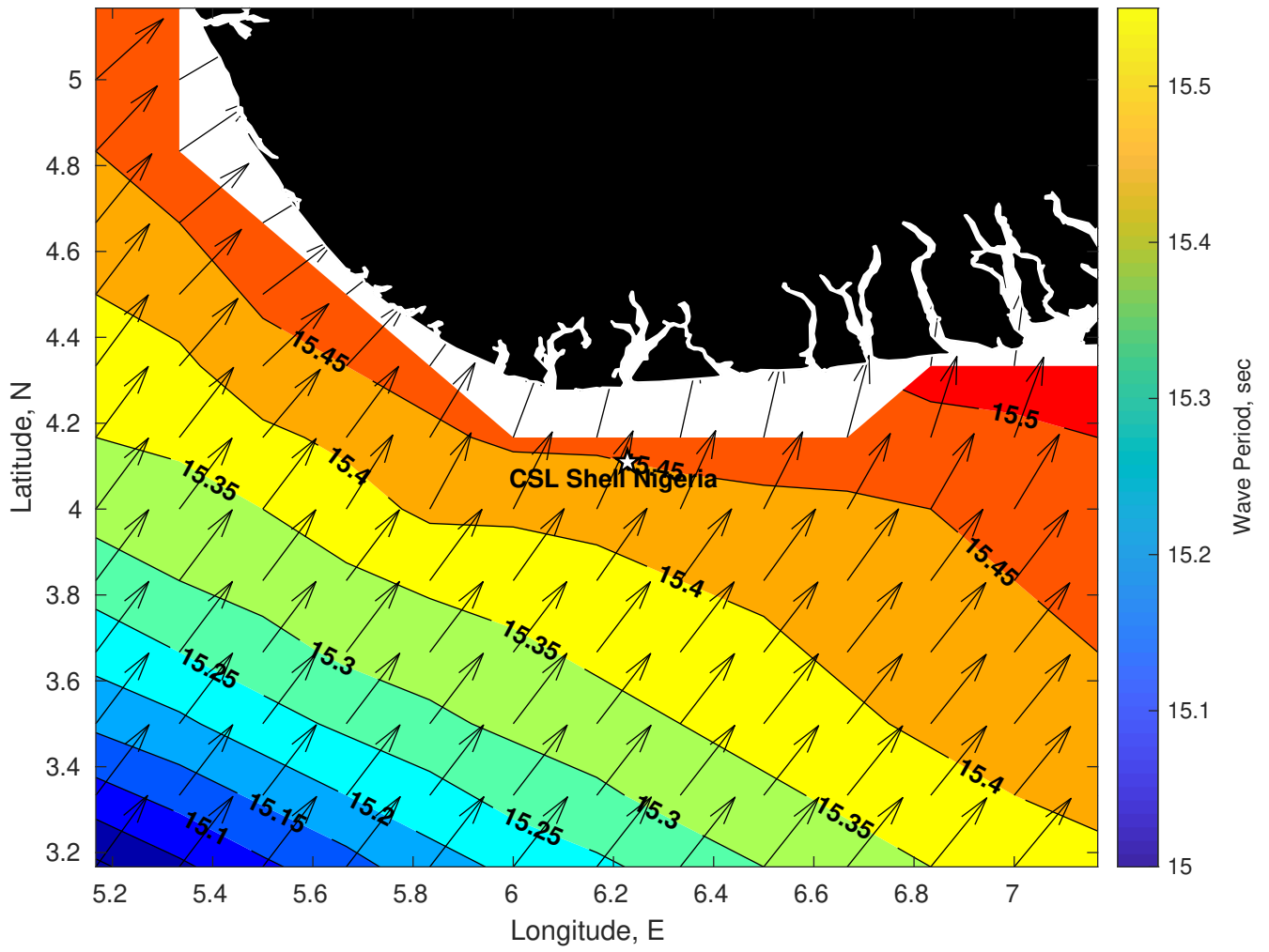
### Met Forecast for CSL Shell Nigeria from 19-Feb-2025 00:00:00 to 26-Feb-2025 00:00:00



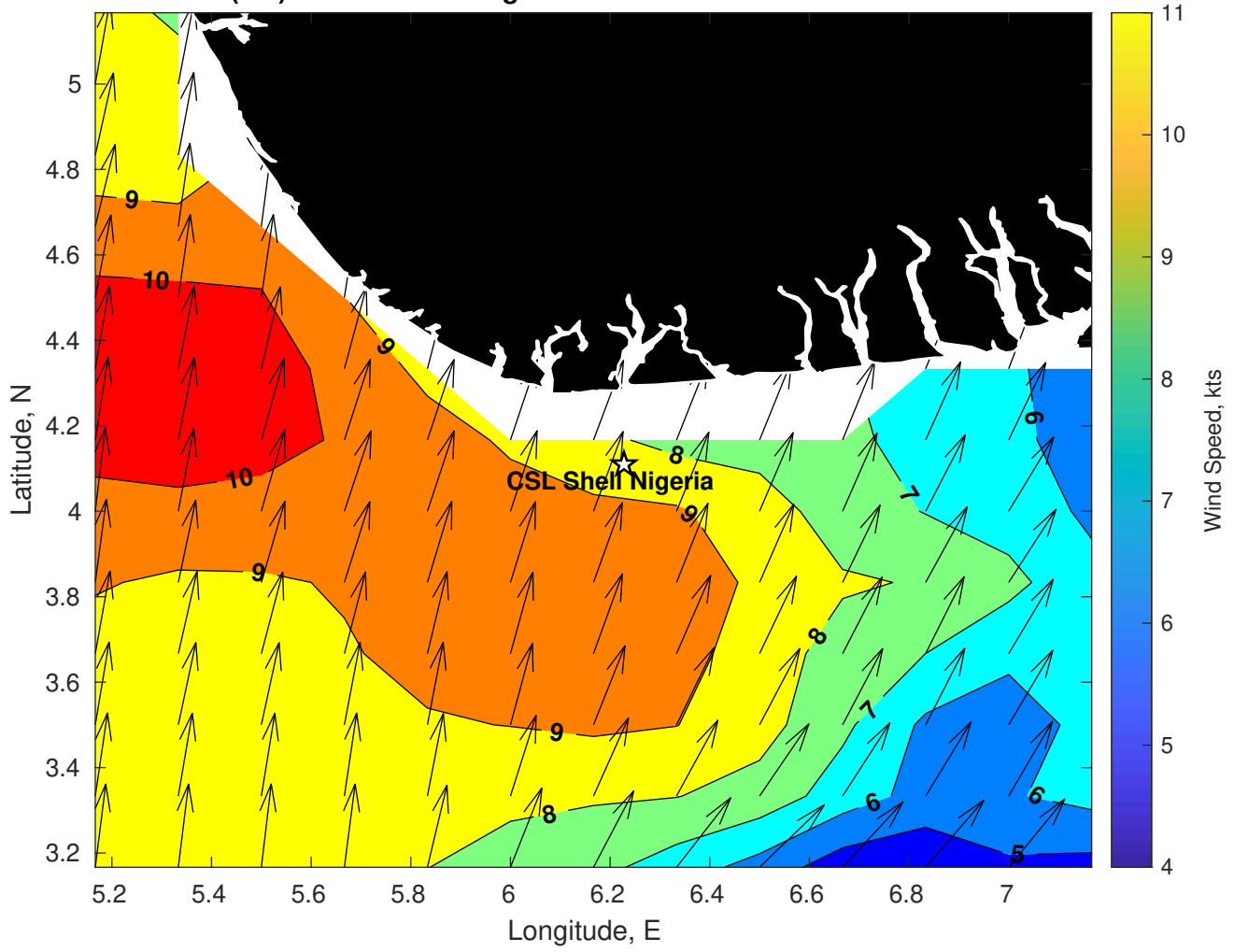
Wave Height (ft) for CSL Shell Nigeria at 19-Feb-2025 09:00:00



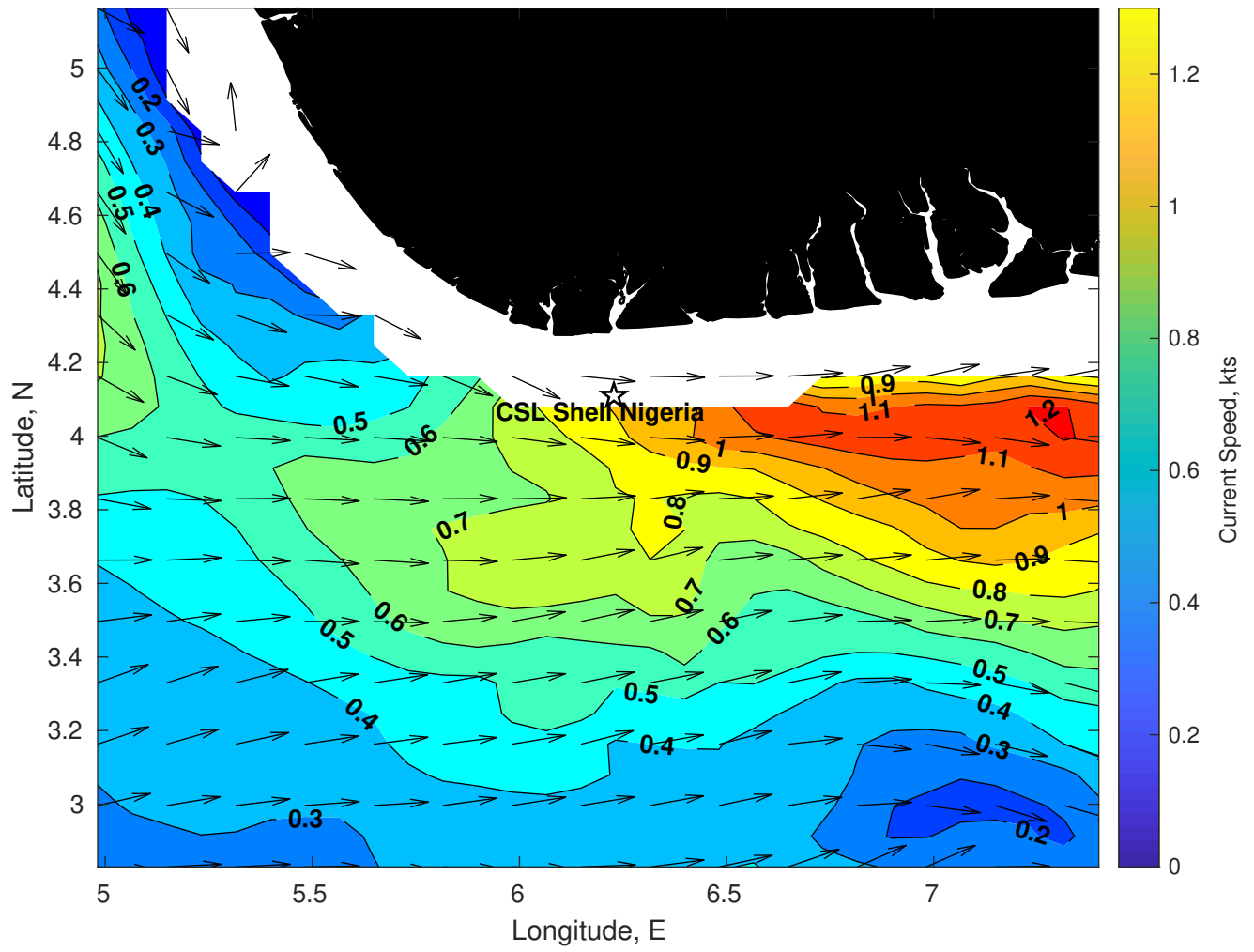
Wave Period (sec) for CSL Shell Nigeria at 19-Feb-2025 09:00:00



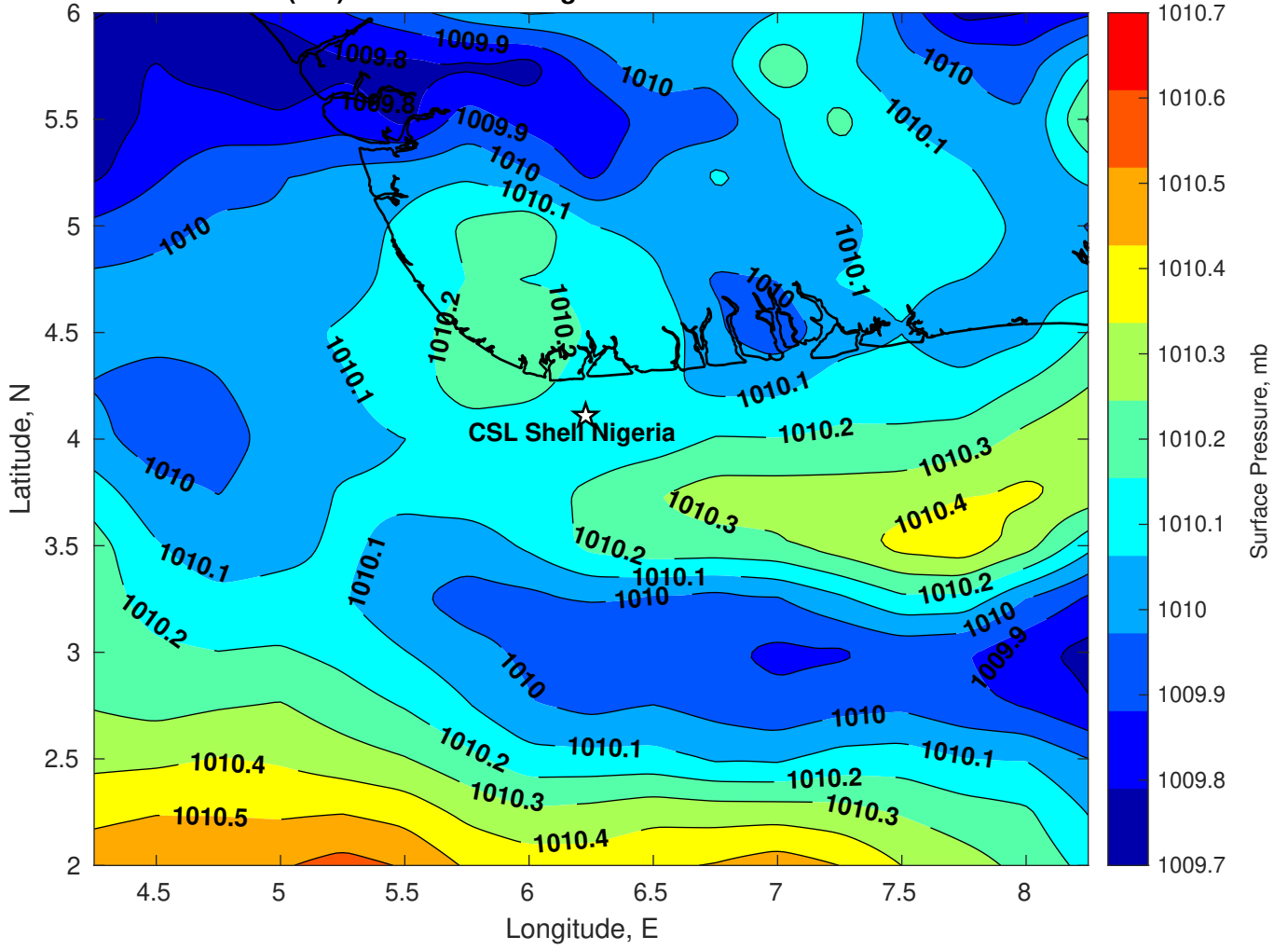
Winds (kts) for CSL Shell Nigeria at 19-Feb-2025 09:00:00



Surface Currents for CSL Shell Nigeria at 18-Feb-2025 00:00:00

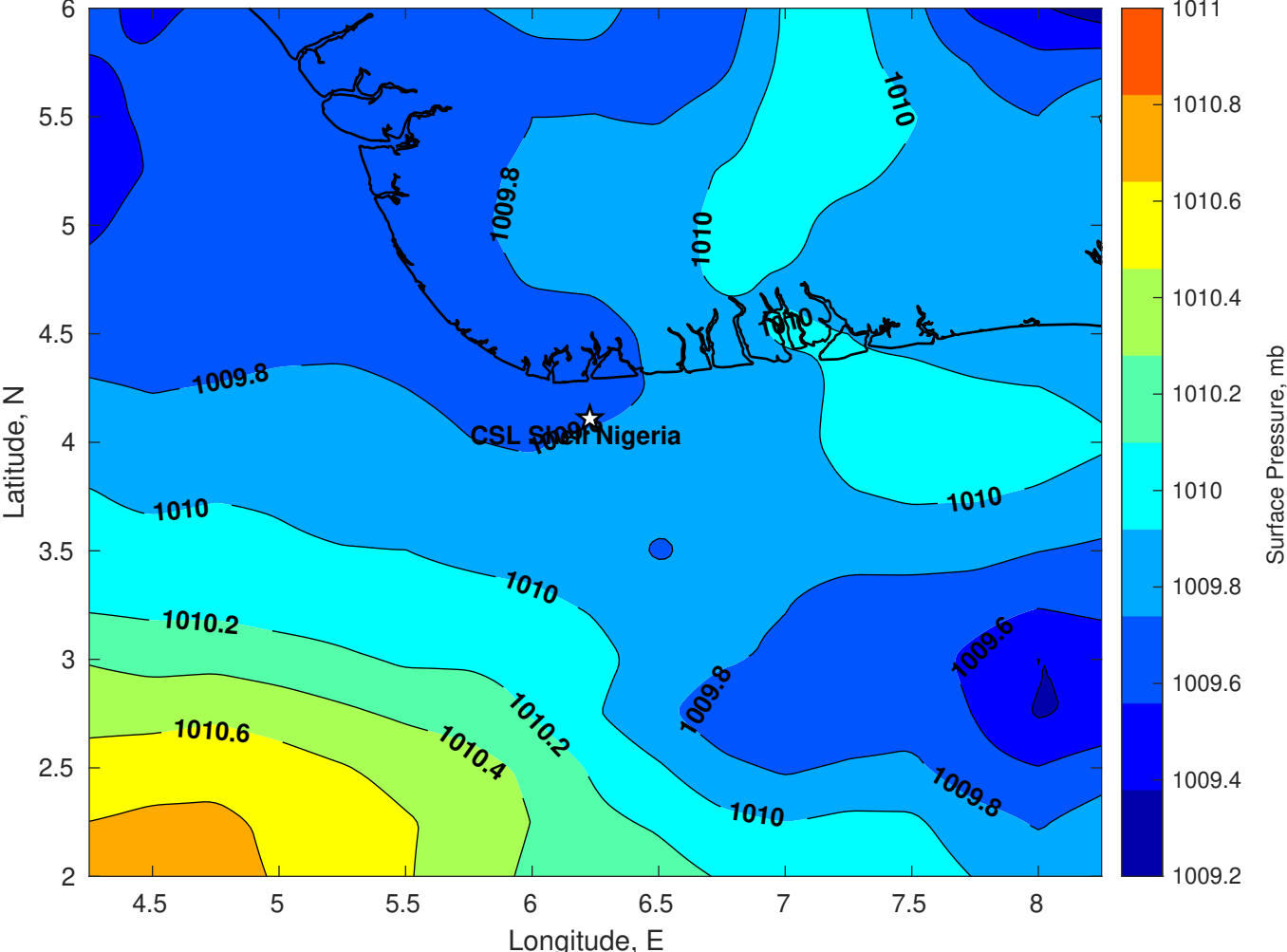


Surface Pressure (mb) for CSL Shell Nigeria at 19-Feb-2025 00:00:00

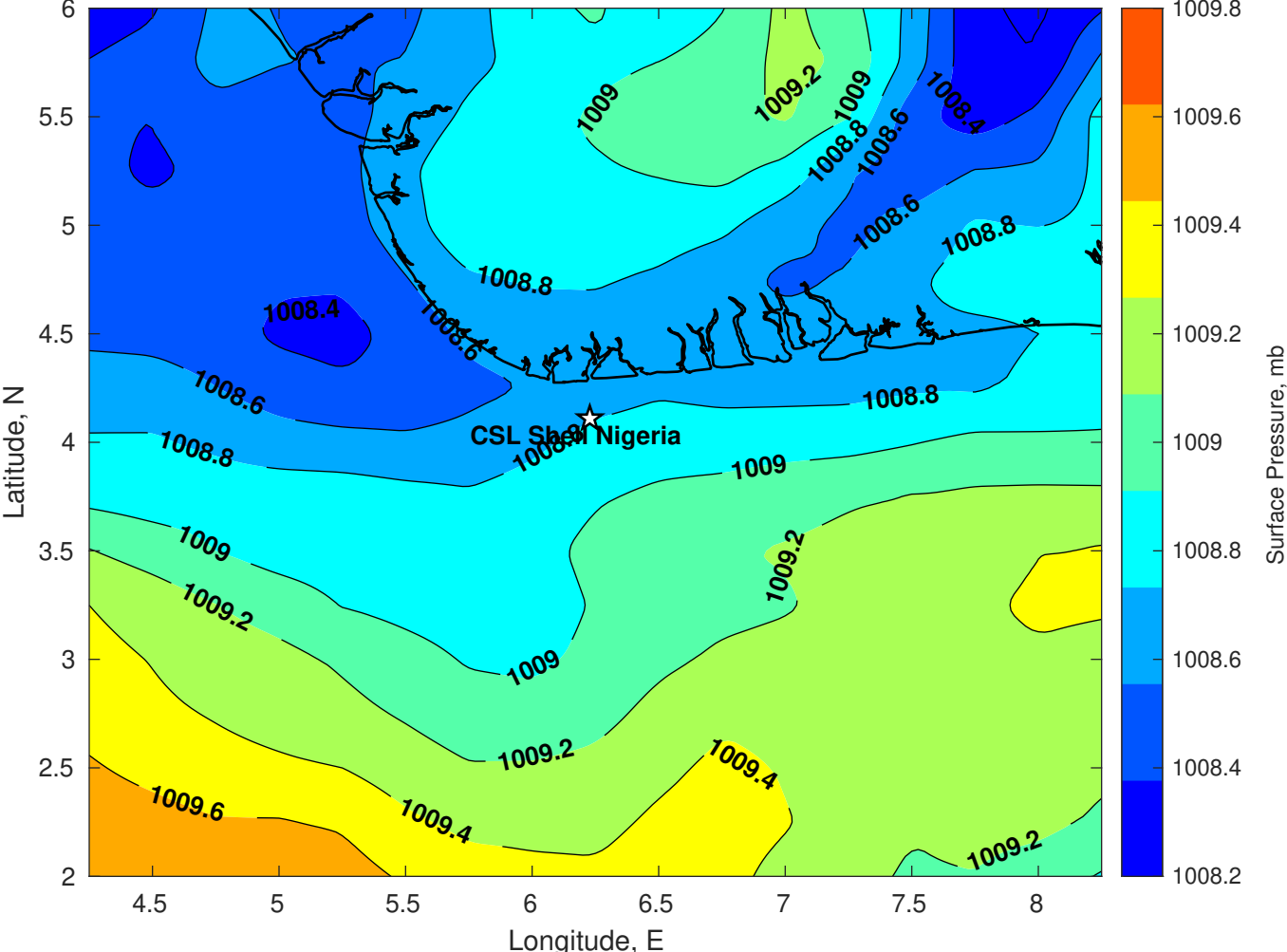




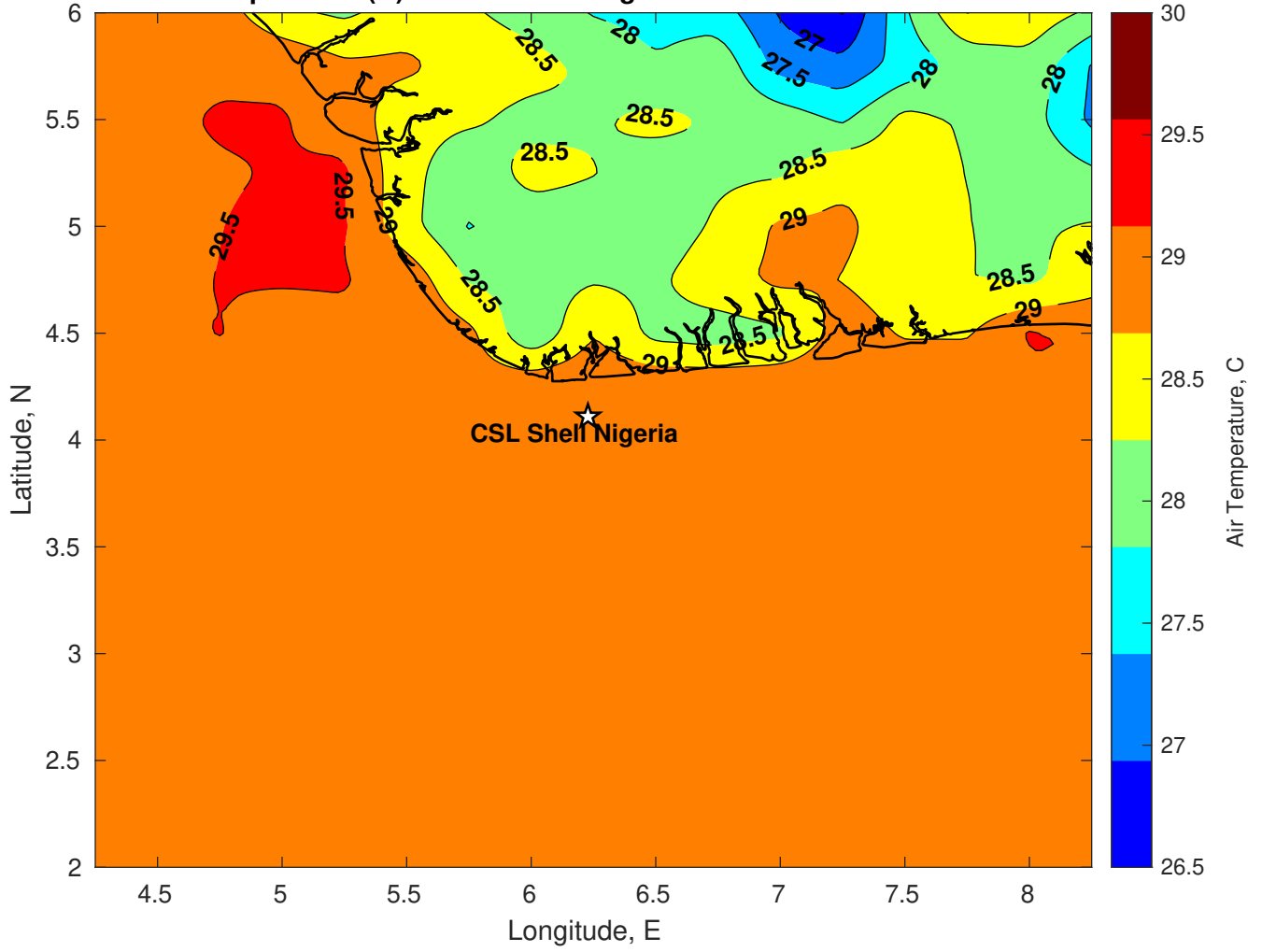
Surface Pressure (mb) for CSL Shell Nigeria at 20-Feb-2025 00:00:00



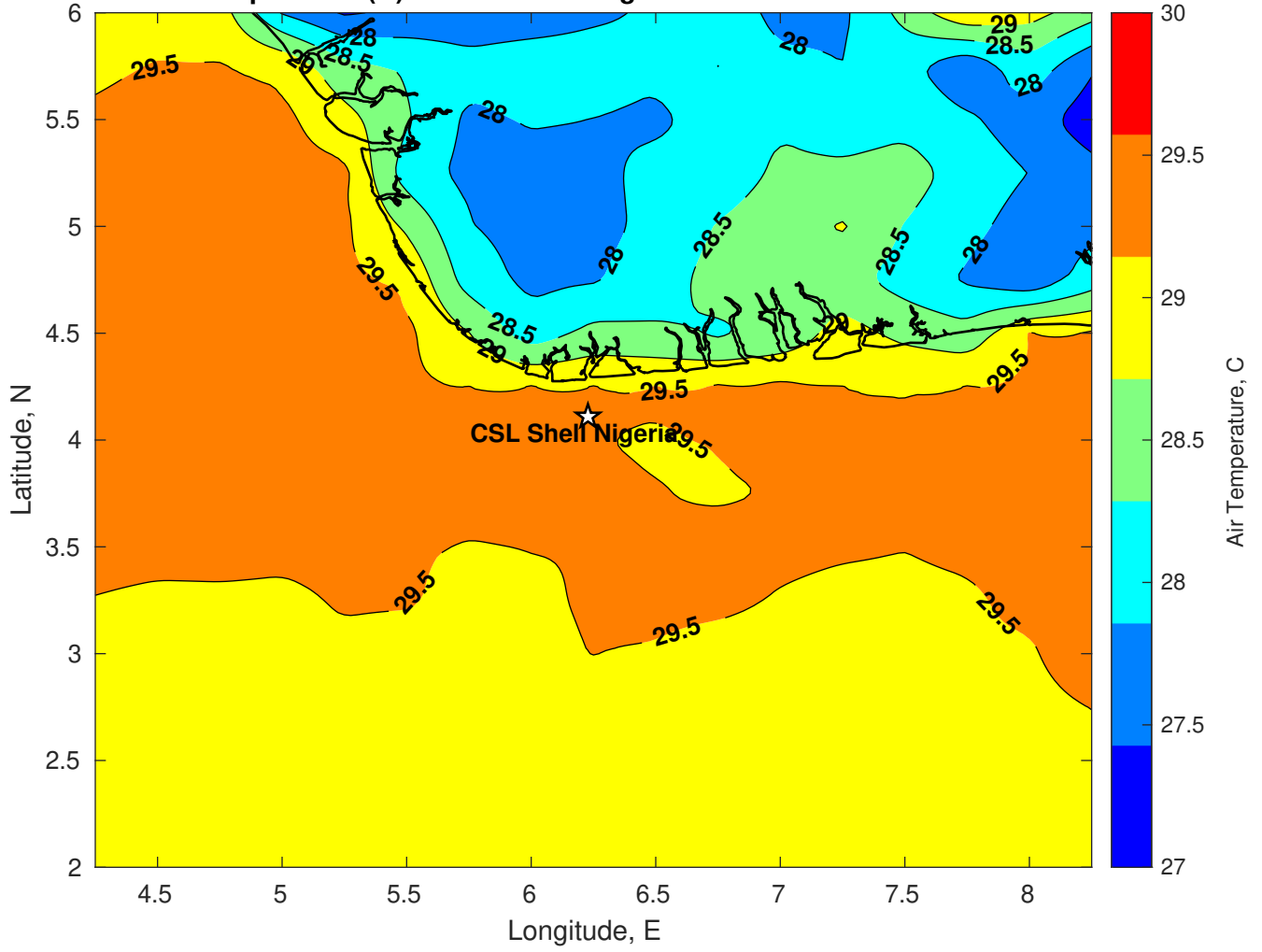
Surface Pressure (mb) for CSL Shell Nigeria at 21-Feb-2025 00:00:00



Air Temperature (C) for CSL Shell Nigeria at 19-Feb-2025



Air Temperature (C) for CSL Shell Nigeria at 19-Feb-2025



Air Temperature (C) for CSL Shell Nigeria at 19-Feb-2025

