

\*\*\*\*\*

Marine Weather Forecast for CSA (ONHYM) PPL EBS - Sierra Leone

Forecast valid as of 20-Feb-2025 0900 GMT

\*\*\*\*\*

All times are local.

Today

Winds: NW, 10-15 kts.

Waves: N, 2-3 feet, 13-14 sec.

No currents available.

Tonight

Winds: NW, 10-15 kts.

Waves: N, 2-3 feet, 12-13 sec.

No currents available.

Friday

Winds: NW, 10-15 kts.

Waves: N, 2-3 feet, 12-13 sec.

No currents available.

Friday Night

Winds: NW, 10-15 kts.

Waves: N, 2-3 feet, 11-12 sec.

No currents available.

Saturday

Winds: NW, 10-15 kts.

Waves: N, 2-3 feet, 11-12 sec.

No currents available.

Saturday Night

Winds: NW, 10-15 kts.

Waves: N, 2-3 feet, 11-12 sec.

No currents available.

Sunday

Winds: NW, 10-15 kts.

Waves: N, 1-2 feet, 11-12 sec.

No currents available.

Sunday Night

Winds: NW, 5-10 kts.

Waves: N, 1-2 feet, 10-11 sec.

No currents available.

Monday

Winds: N, 10-15 kts.

Waves: N, 1-2 feet, 10-11 sec.

No currents available.

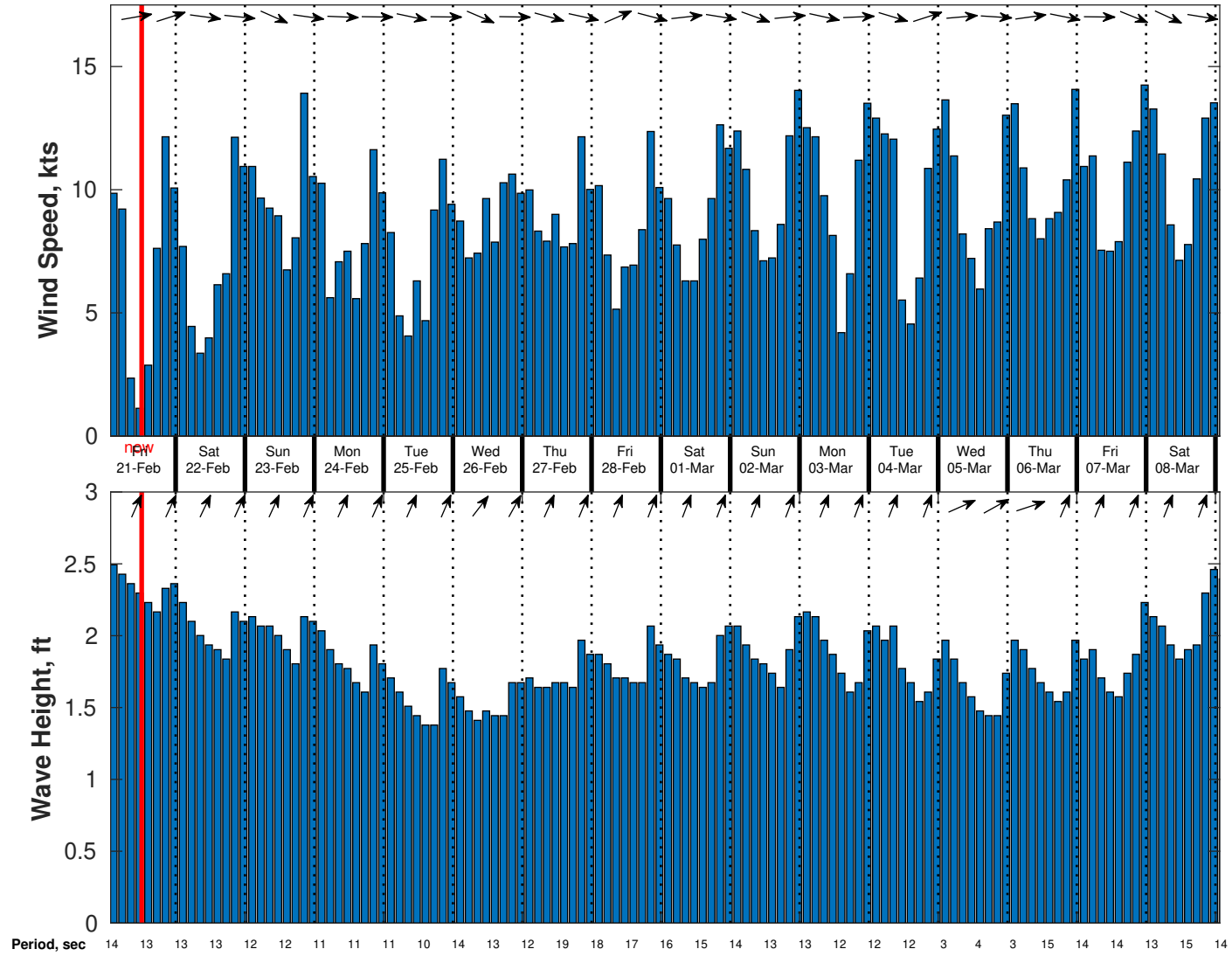
Monday Night

Winds: NW, 5-10 kts.

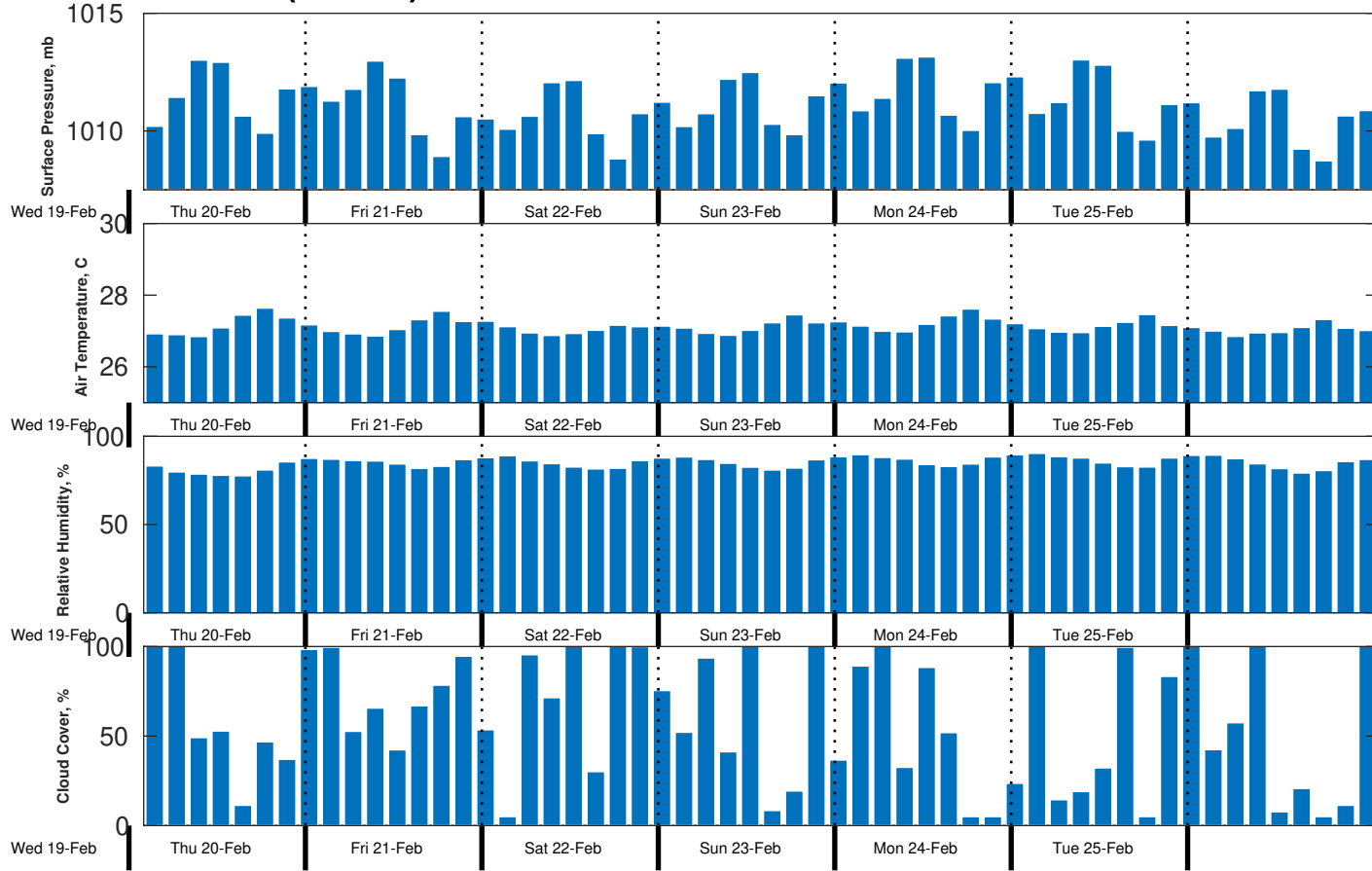
Waves: NW, 1-2 feet, 14-15 sec.

No currents available.

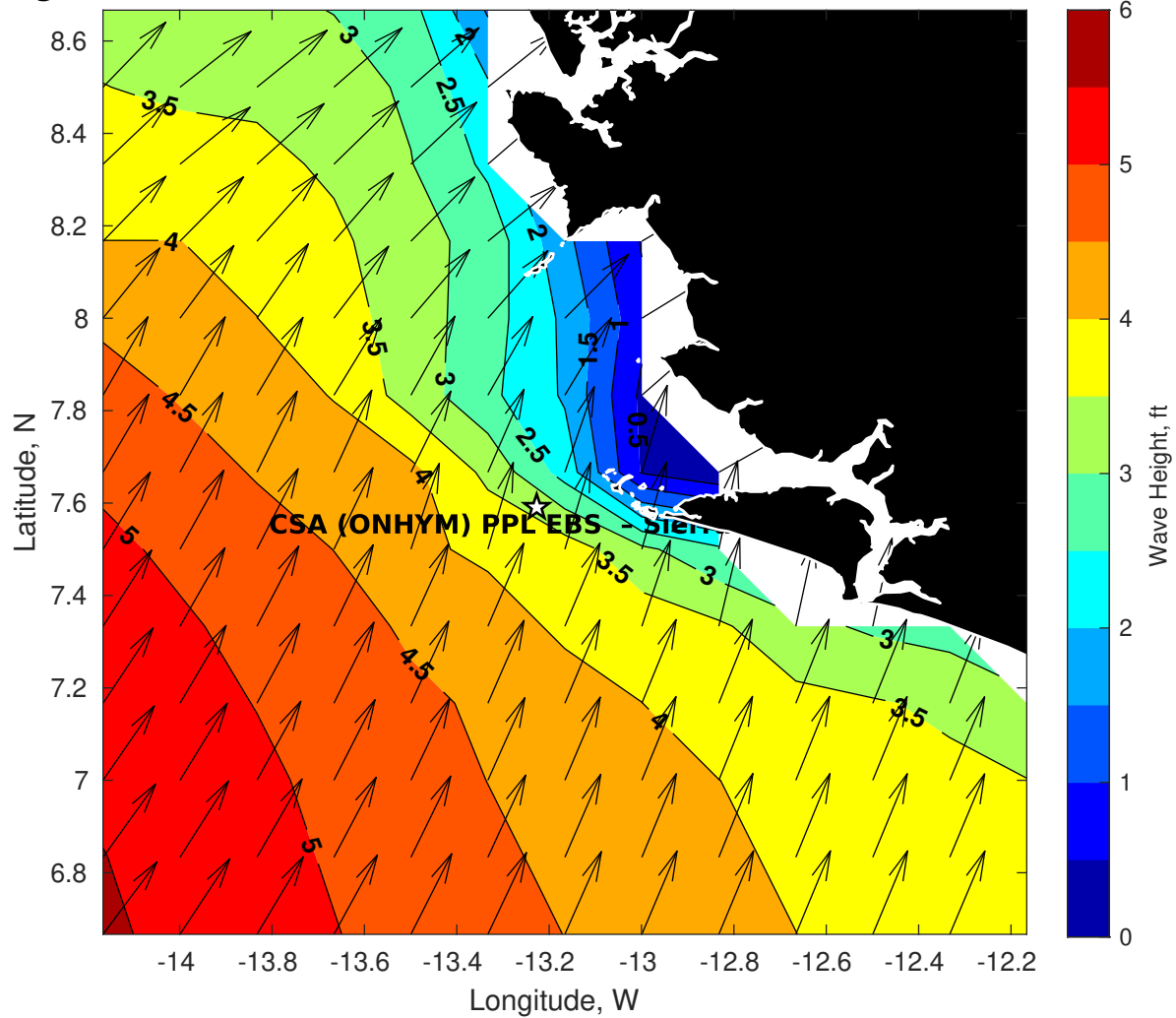
**Wind & Wave Forecast for CSA (ONHYM) PPL EBS - Sierra Leone from 20-Feb-2025 01:00:00 to 08-Mar-2025 01:00:00**



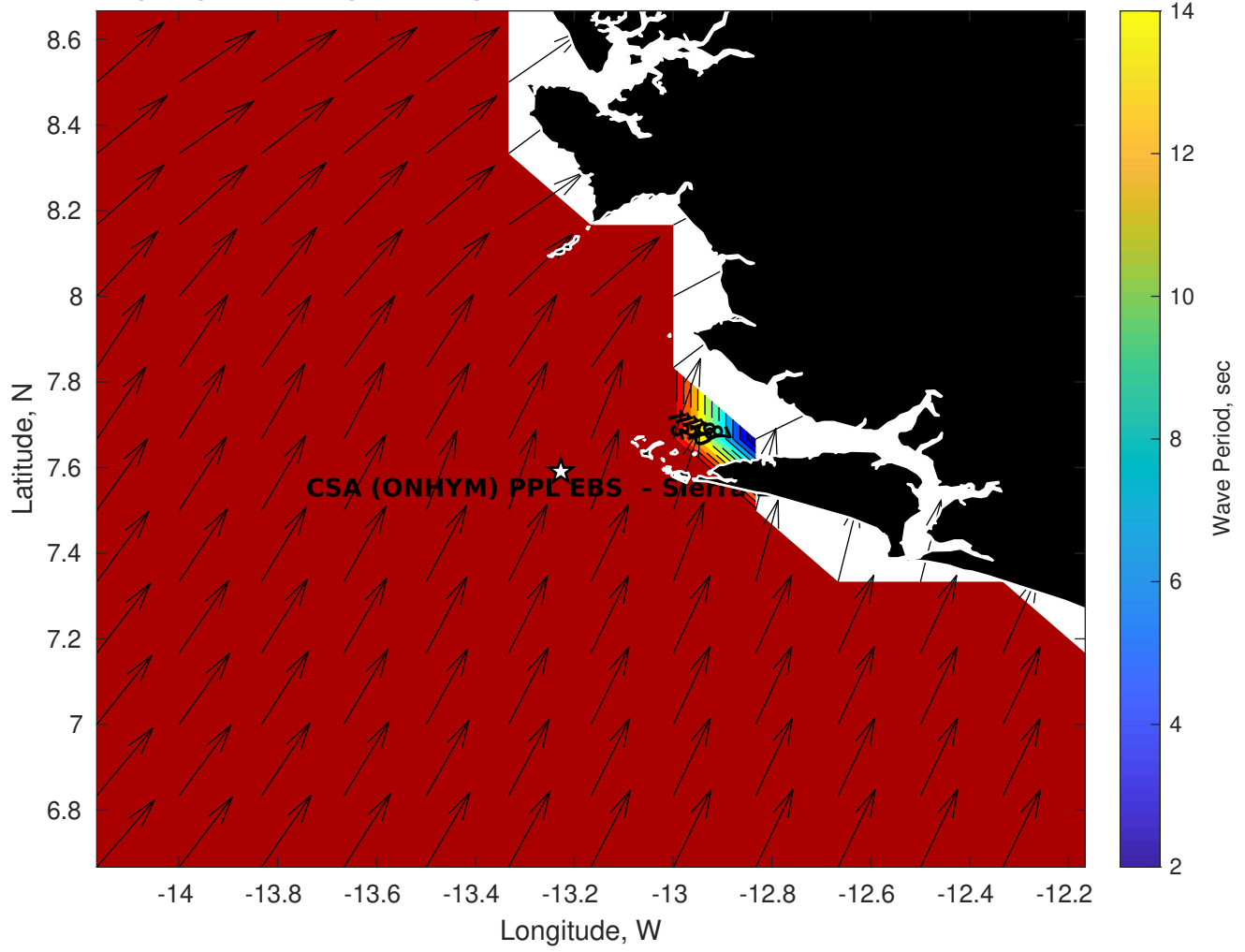
### Met Forecast for CSA (ONHYM) PPL EBS - Sierra Leone from 20-Feb-2025 00:00:00 to 27-Feb-2025 00:00:00



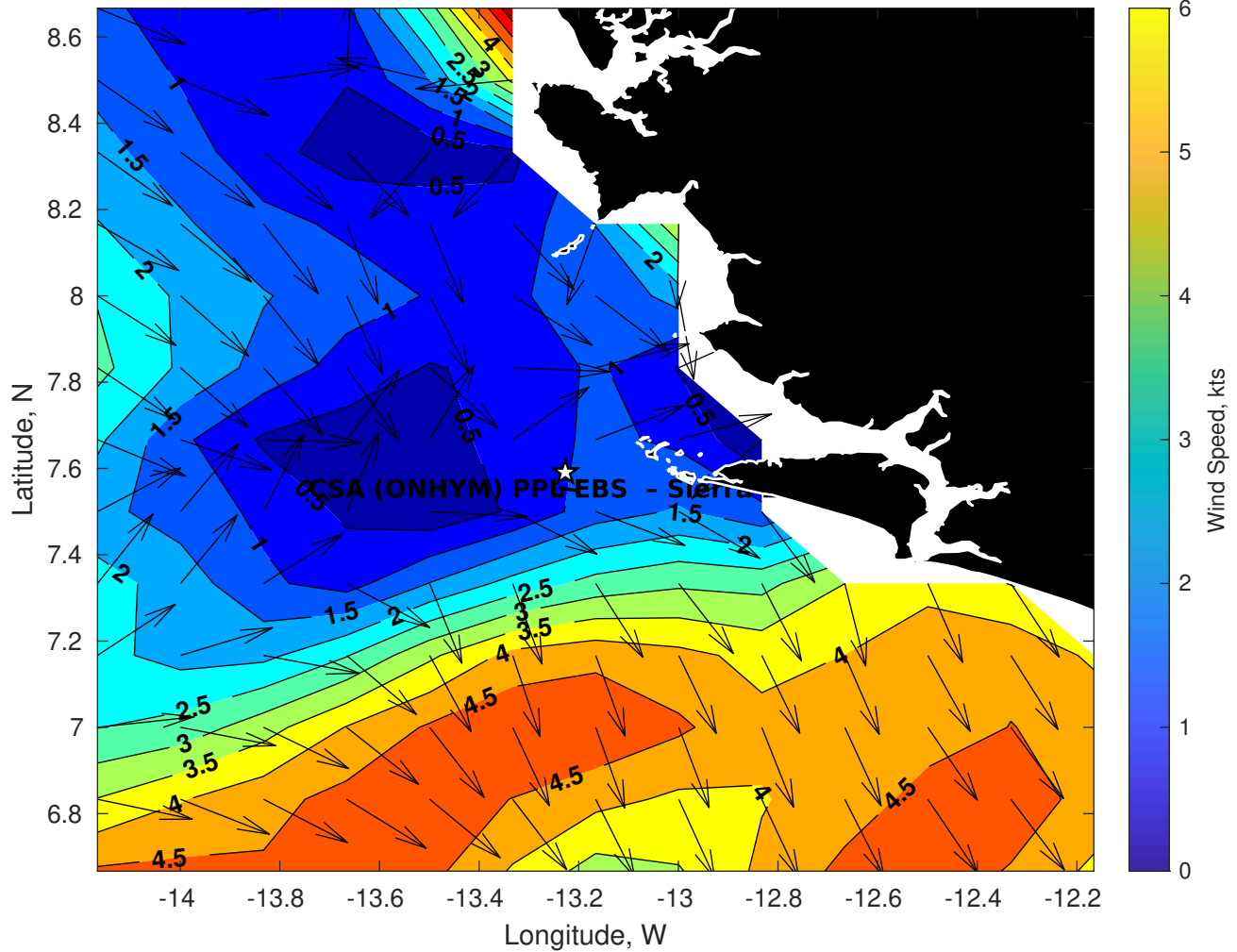
Wave Height (ft) for CSA (ONHYM) PPL EBS - Sierra Leone at 20-Feb-2025 09:00:00



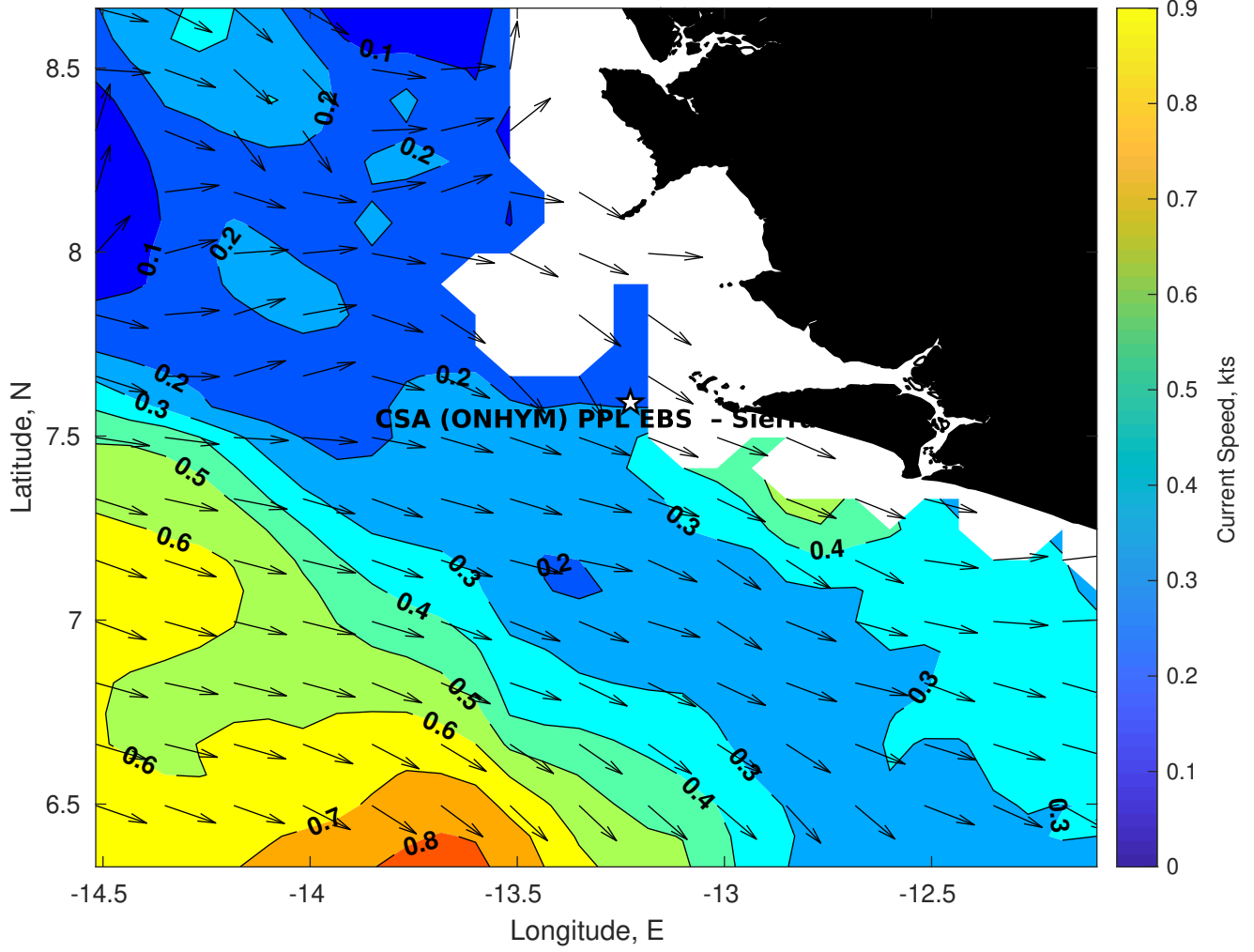
**Wave Period (sec) for CSA (ONHYM) PPL EBS - Sierra Leone at 20-Feb-2025 09:00:00**



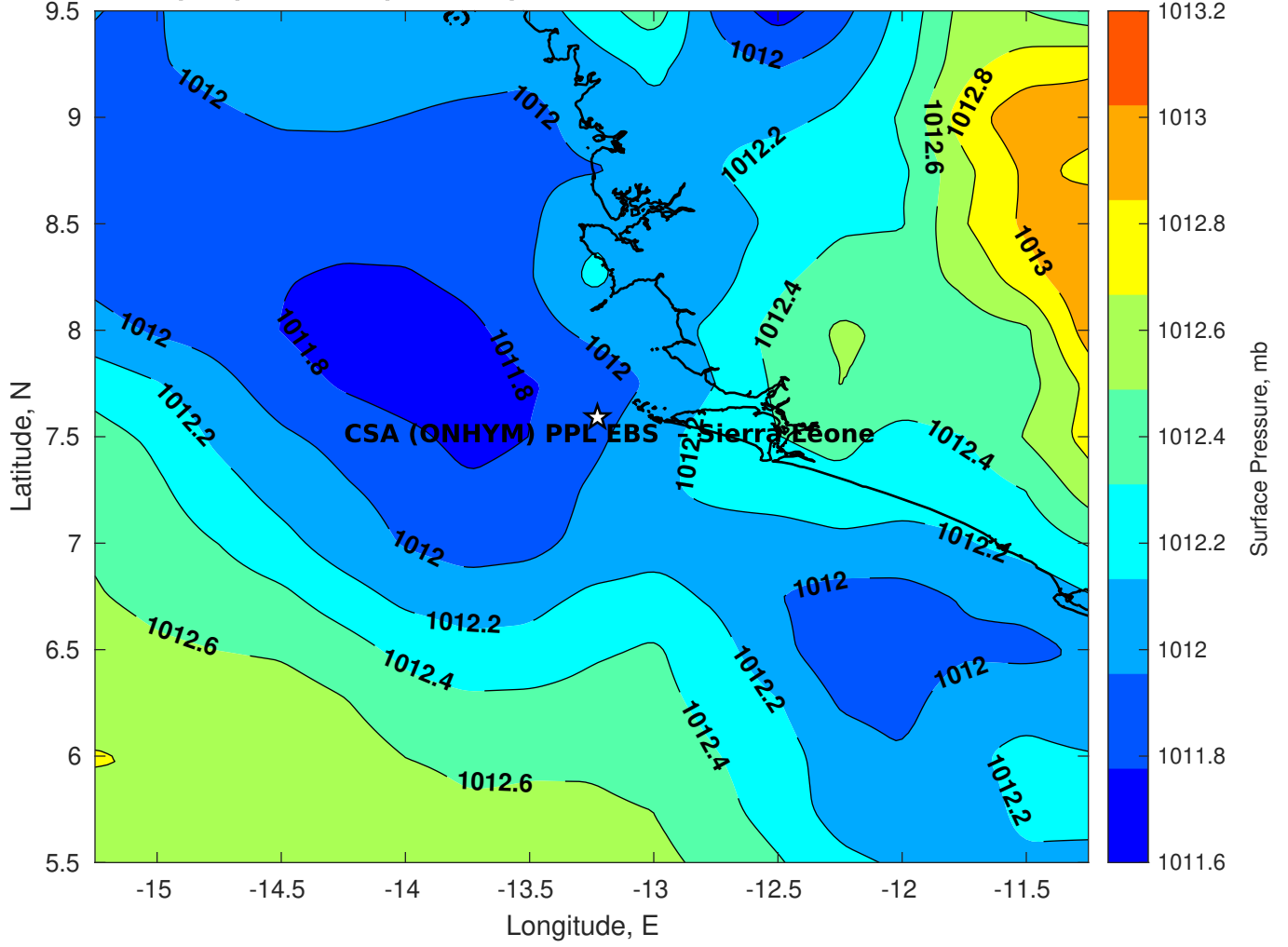
**Winds (kts) for CSA (ONHYM) PPL EBS - Sierra Leone at 20-Feb-2025 09:00:00**



**Surface Currents for CSA (ONHYM) PPL EBS - Sierra Leone at 19-Feb-2025 00:00:00**

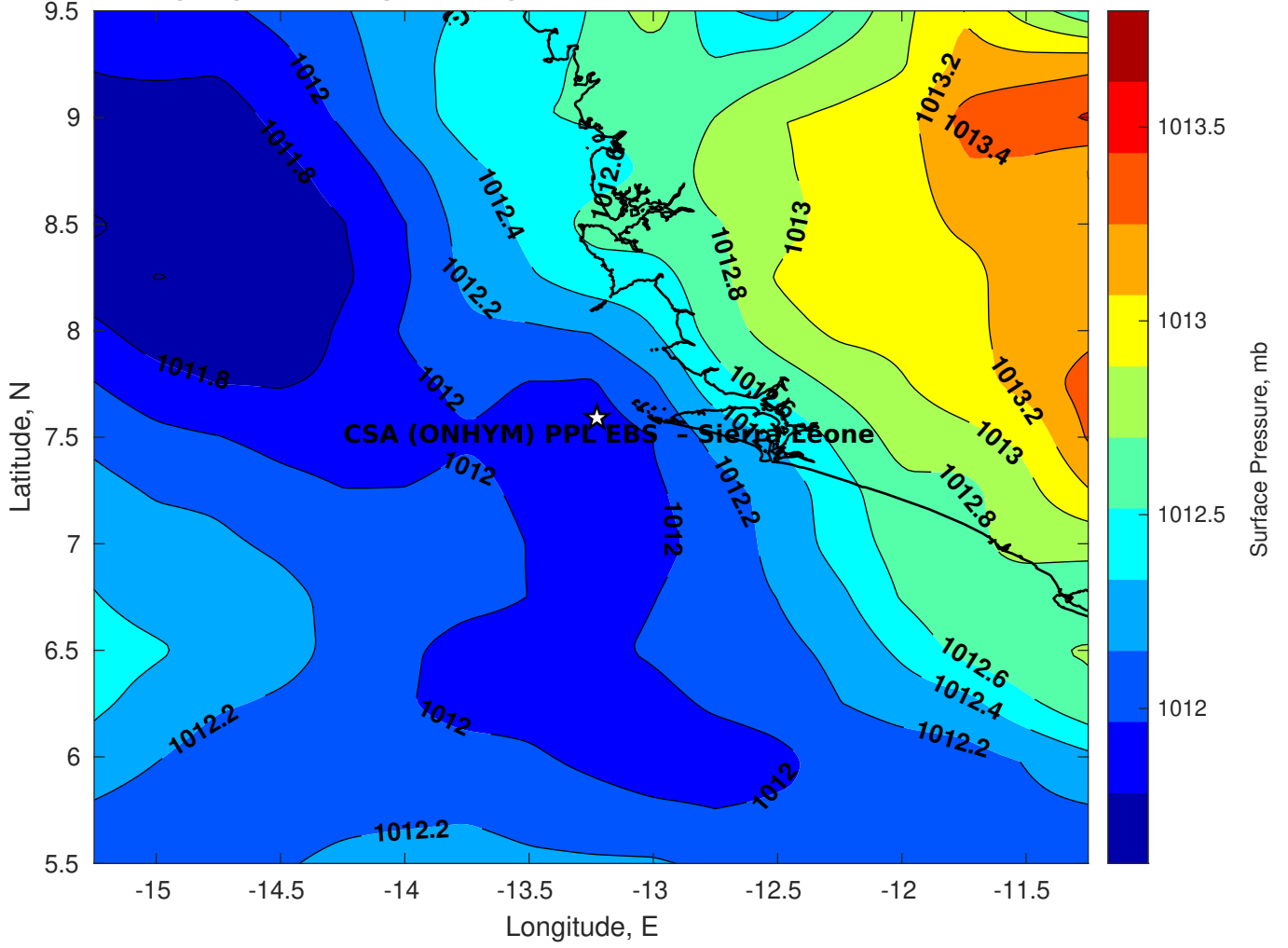


Surface Pressure (mb) for CSA (ONHYM) PPL EBS - Sierra Leone at 20-Feb-2025 00:00:00

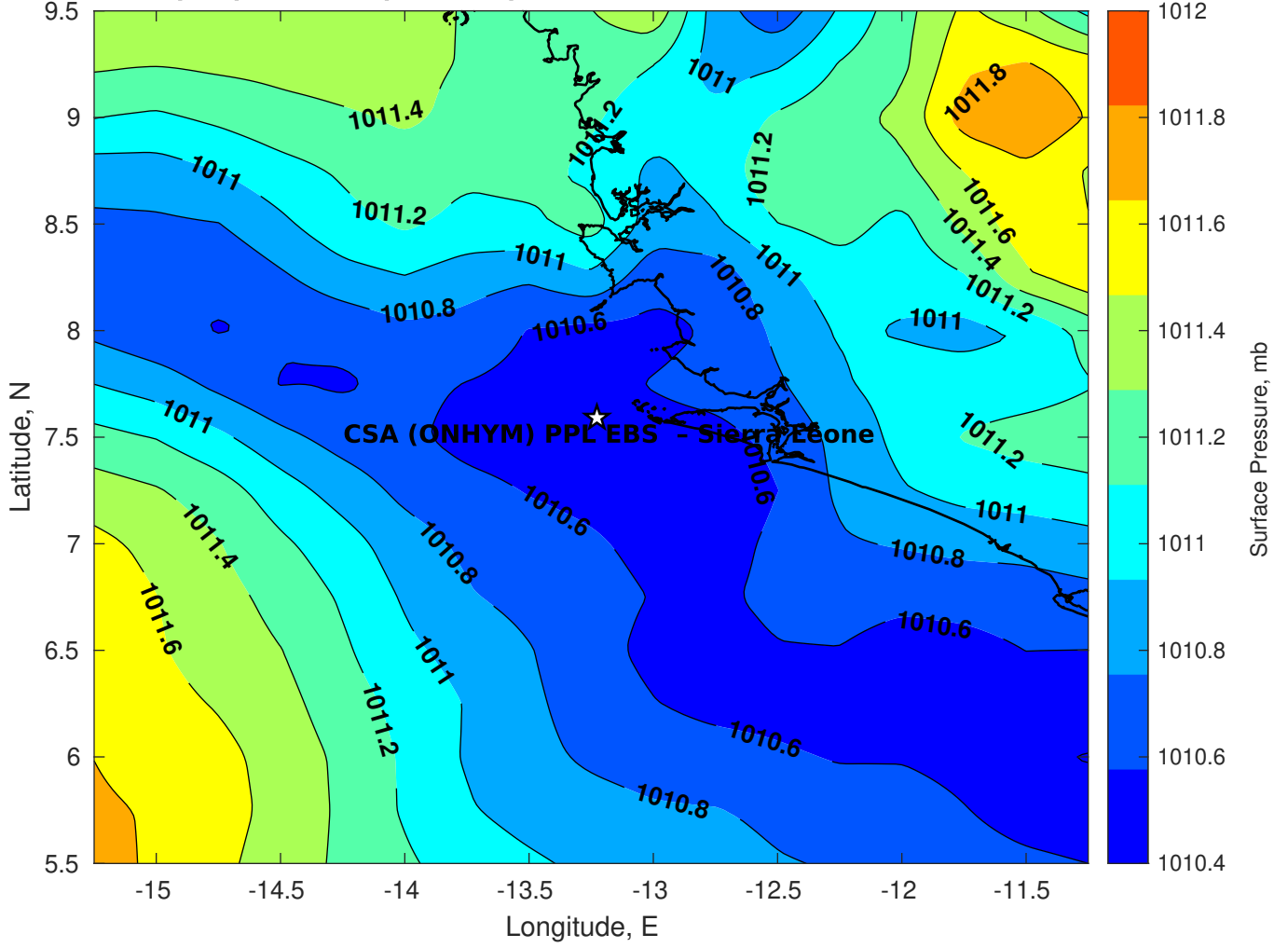




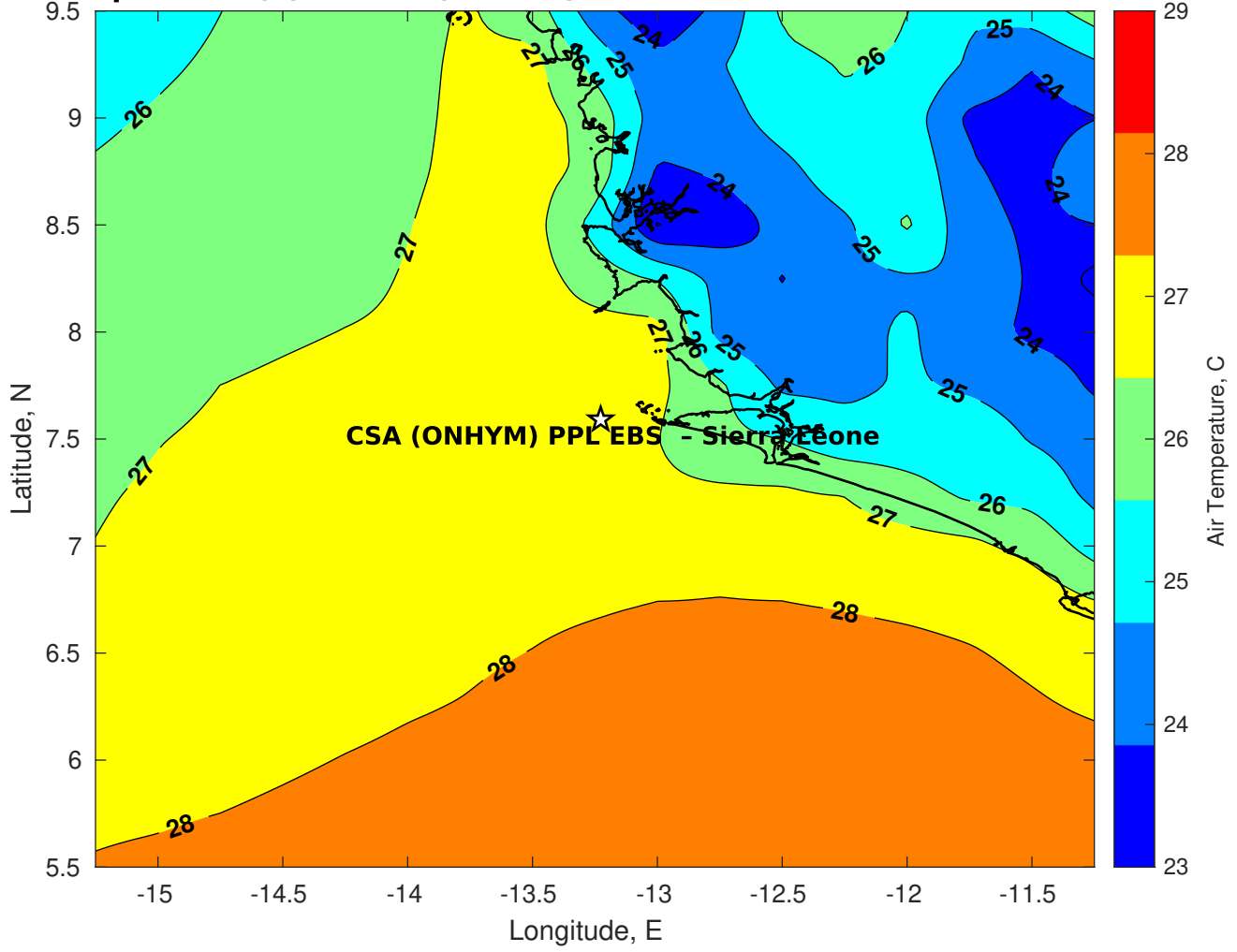
**Surface Pressure (mb) for CSA (ONHYM) PPL EBS - Sierra Leone at 21-Feb-2025 00:00:00**



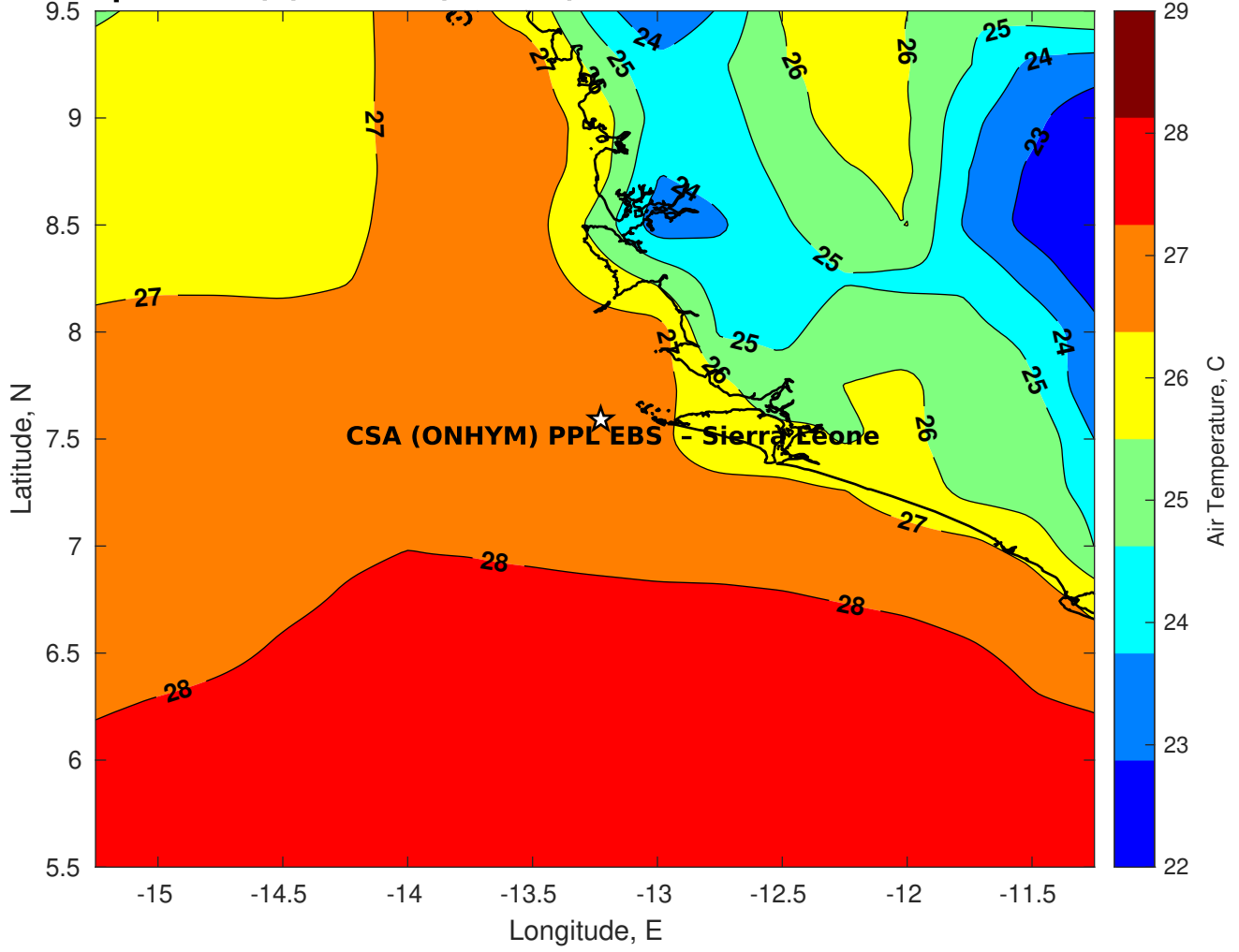
**Surface Pressure (mb) for CSA (ONHYM) PPL EBS - Sierra Leone at 22-Feb-2025 00:00:00**



**Air Temperature (C) for CSA (ONHYM) PPL EBS - Sierra Leone at 20-Feb-2025**



**Air Temperature (C) for CSA (ONHYM) PPL EBS - Sierra Leone at 20-Feb-2025**



**Air Temperature (C) for CSA (ONHYM) PPL EBS - Sierra Leone at 20-Feb-2025**

