

\*\*\*\*\*  
Marine Weather Forecast for Gyre  
Forecast valid as of 20-Feb-2025 0900 GMT  
\*\*\*\*\*

All times are local.

Today

Winds: E, 10-15 kts.  
Waves: NW, 6-7 feet, 13-14 sec.  
No currents available.

Tonight

Winds: NE, 5-10 kts.  
Waves: NW, 5-6 feet, 12-13 sec.  
No currents available.

Friday

Winds: NE, 5-10 kts.  
Waves: NW, 6-7 feet, 17-18 sec.  
No currents available.

Friday Night

Winds: N, 10-15 kts.  
Waves: NW, 6-7 feet, 16-17 sec.  
No currents available.

Saturday

Winds: NE, 5-10 kts.  
Waves: NW, 6-7 feet, 16-17 sec.  
No currents available.

Saturday Night

Winds: NE, 10-15 kts.  
Waves: NW, 6-7 feet, 14-15 sec.  
No currents available.

Sunday

Winds: NE, 10-15 kts.  
Waves: NW, 6-7 feet, 13-14 sec.  
No currents available.

Sunday Night

Winds: NE, 10-15 kts.  
Waves: NW, 5-6 feet, 13-14 sec.  
No currents available.

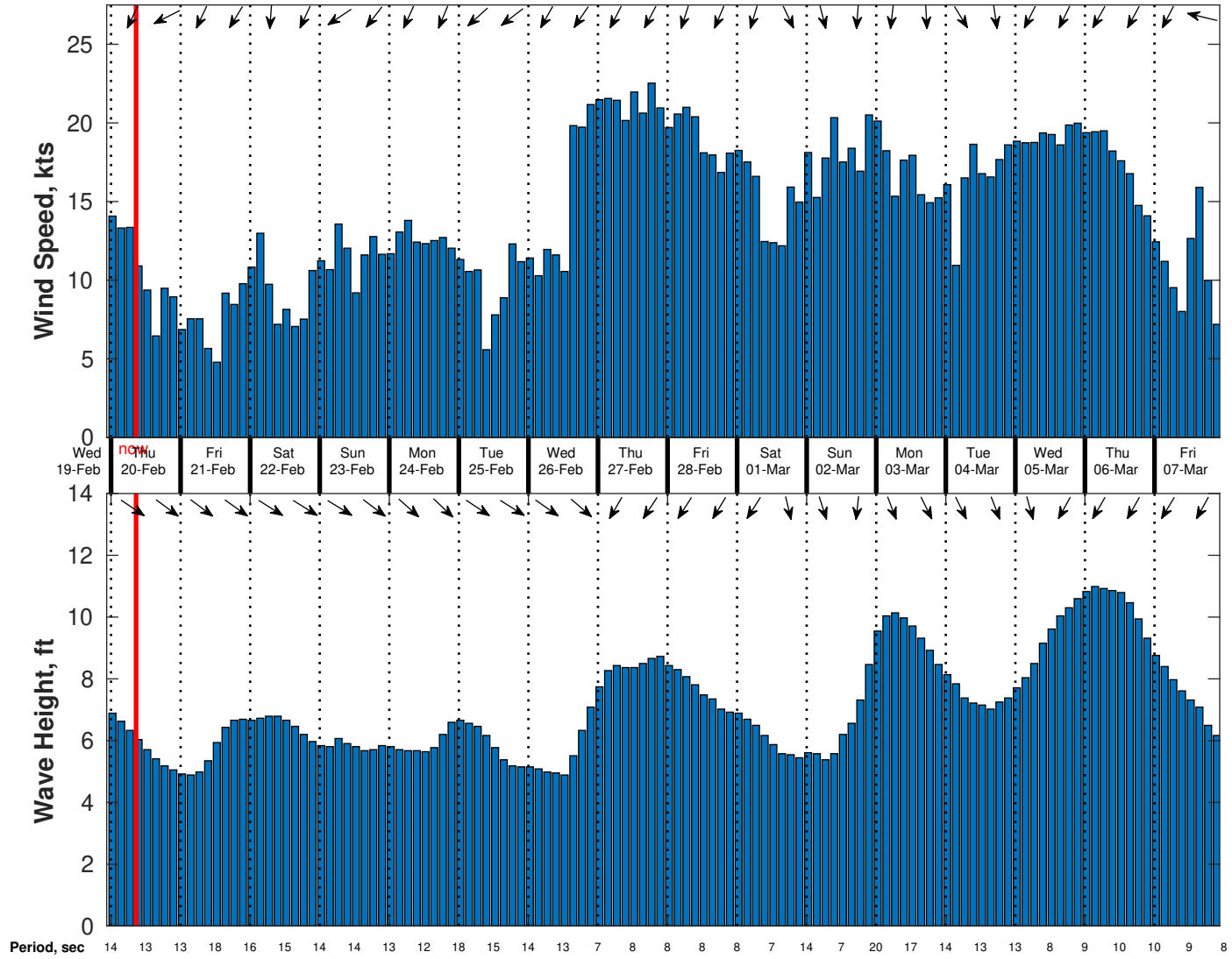
Monday

Winds: NE, 10-15 kts.  
Waves: NW, 5-6 feet, 12-13 sec.  
No currents available.

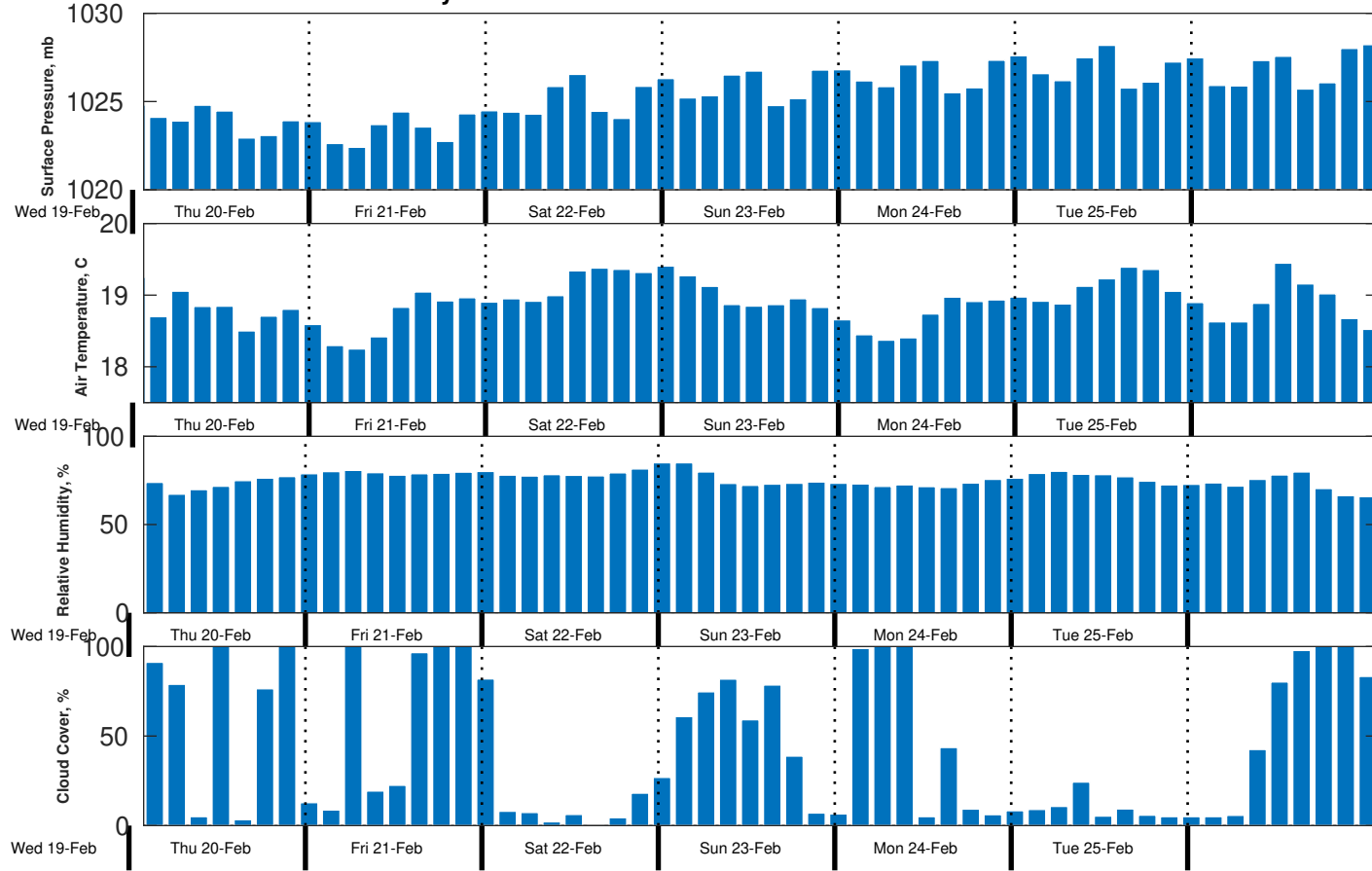
Monday Night

Winds: NE, 10-15 kts.  
Waves: NW, 6-7 feet, 19-20 sec.  
No currents available.

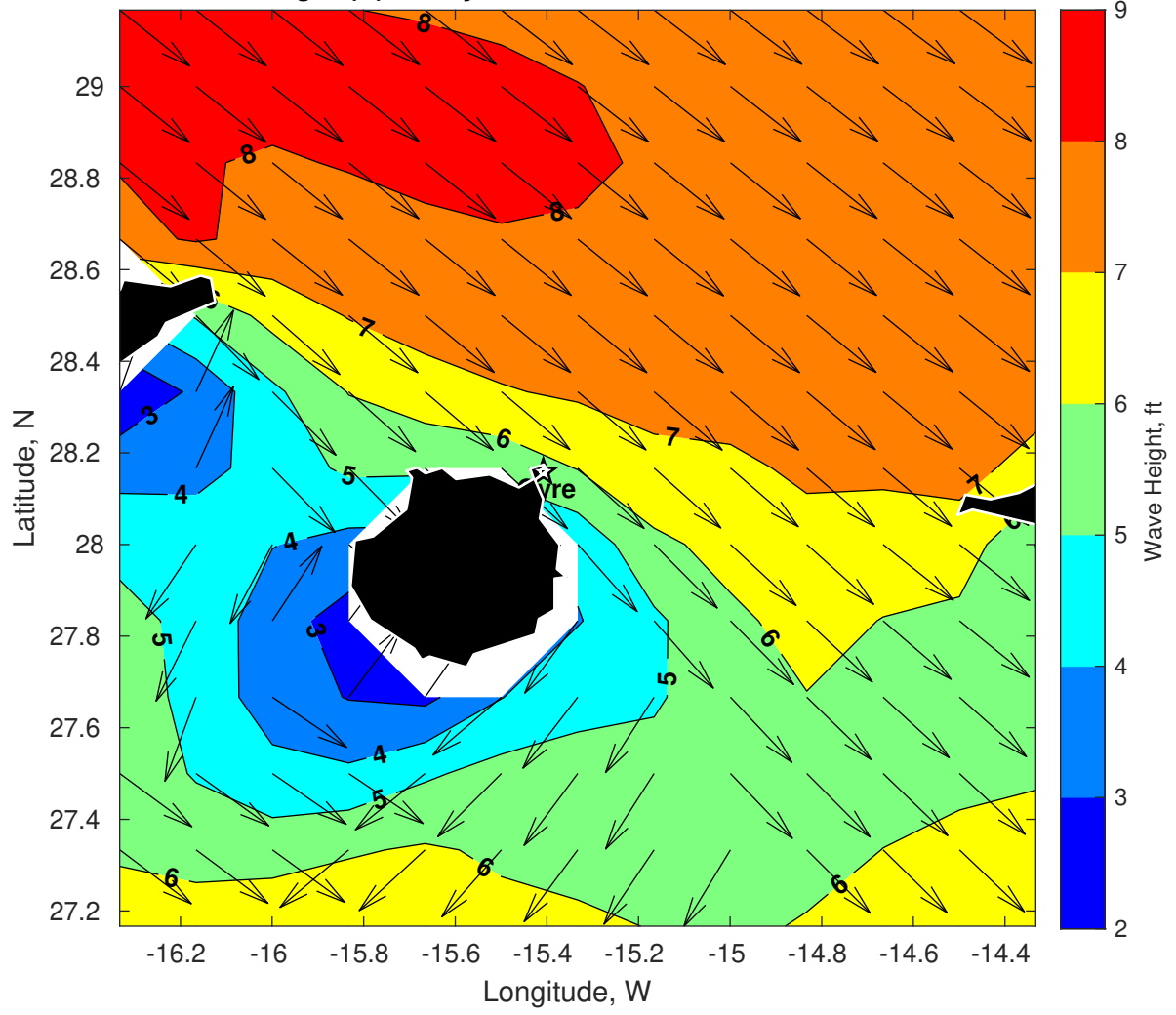
Wind & Wave Forecast for Gyre from 19-Feb-2025 23:00:00 to 07-Mar-2025 23:00:00



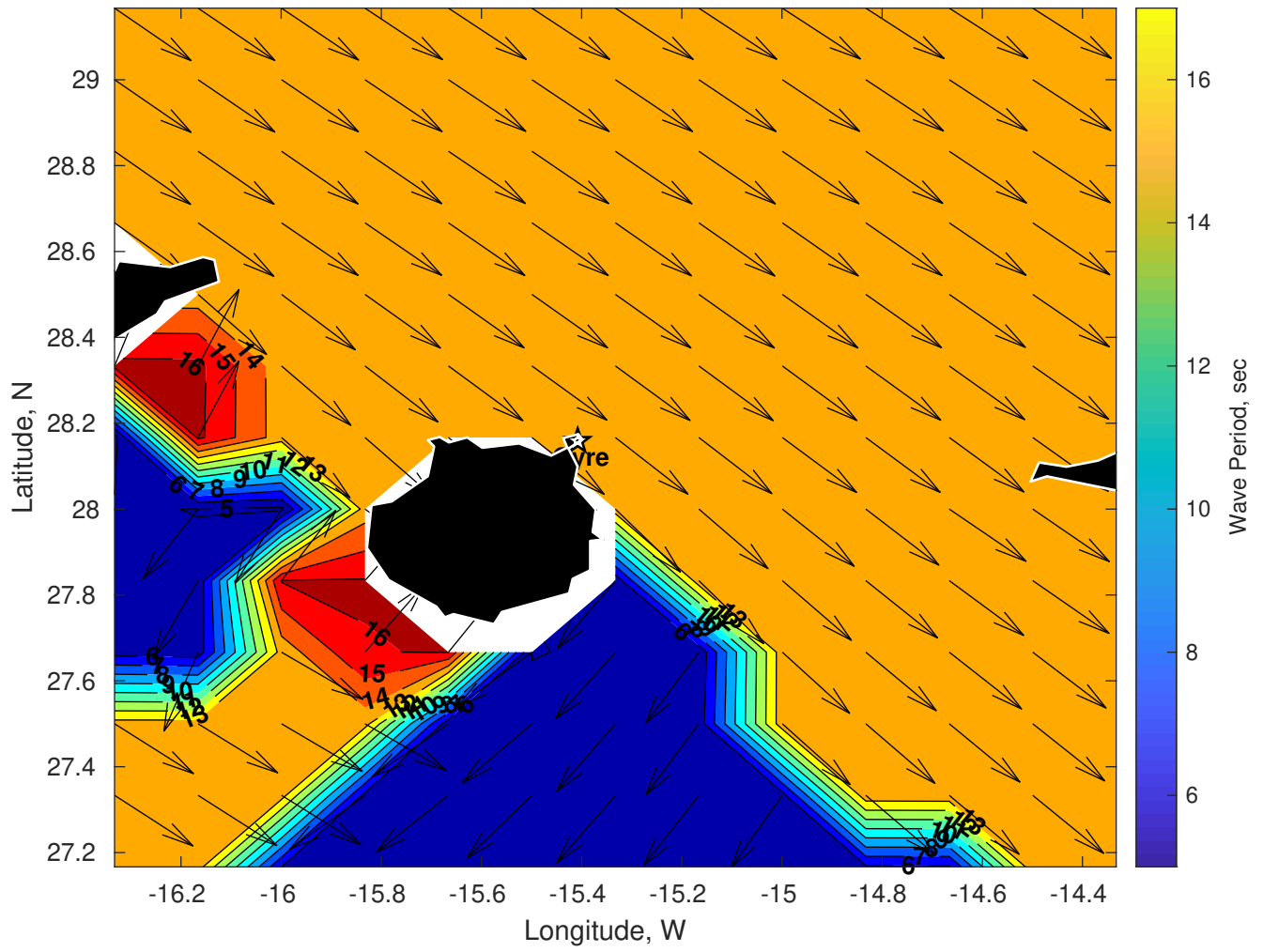
### Met Forecast for Gyre from 19-Feb-2025 23:00:00 to 26-Feb-2025 23:00:00



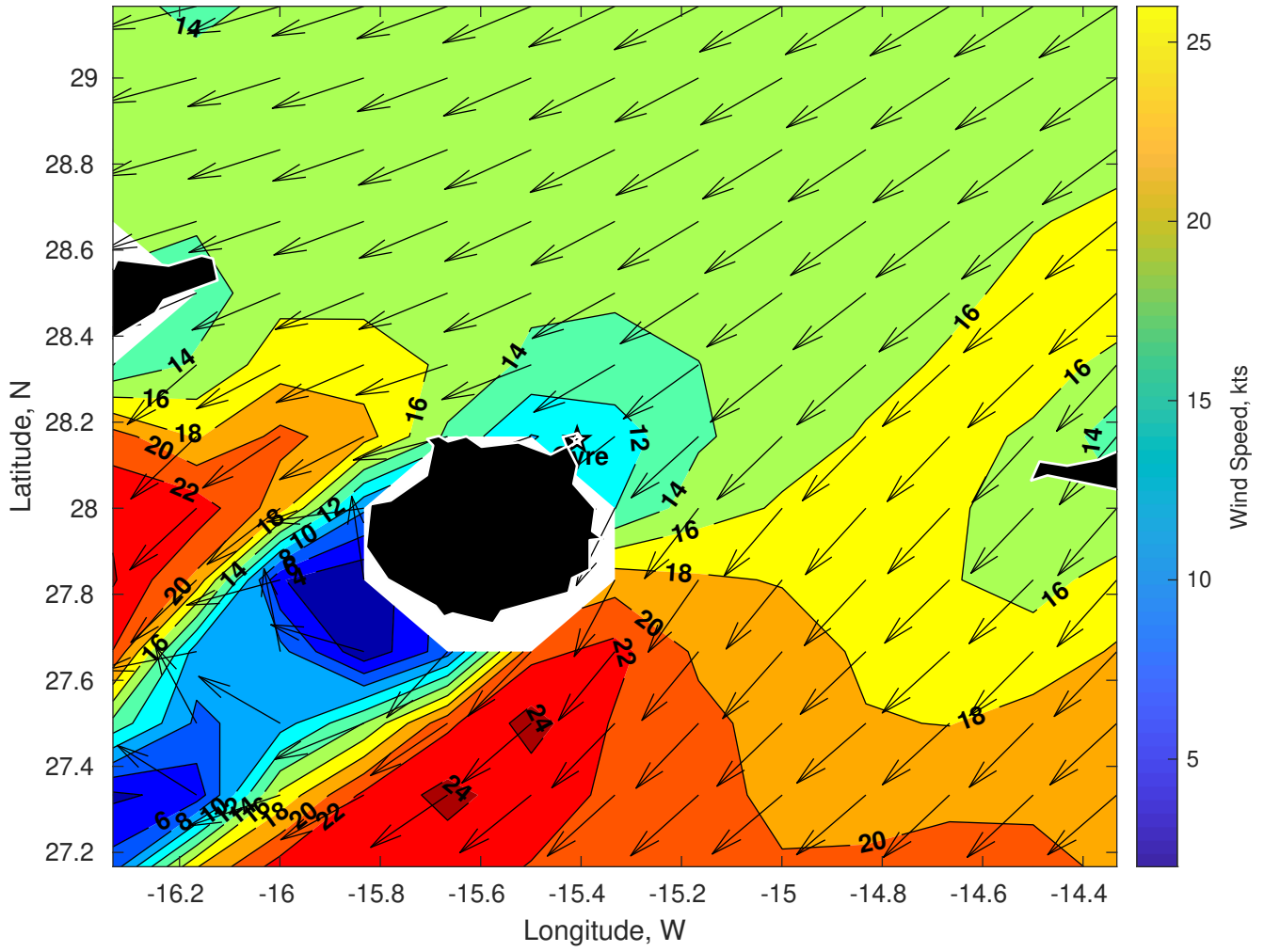
Wave Height (ft) for Gyre at 20-Feb-2025 09:00:00



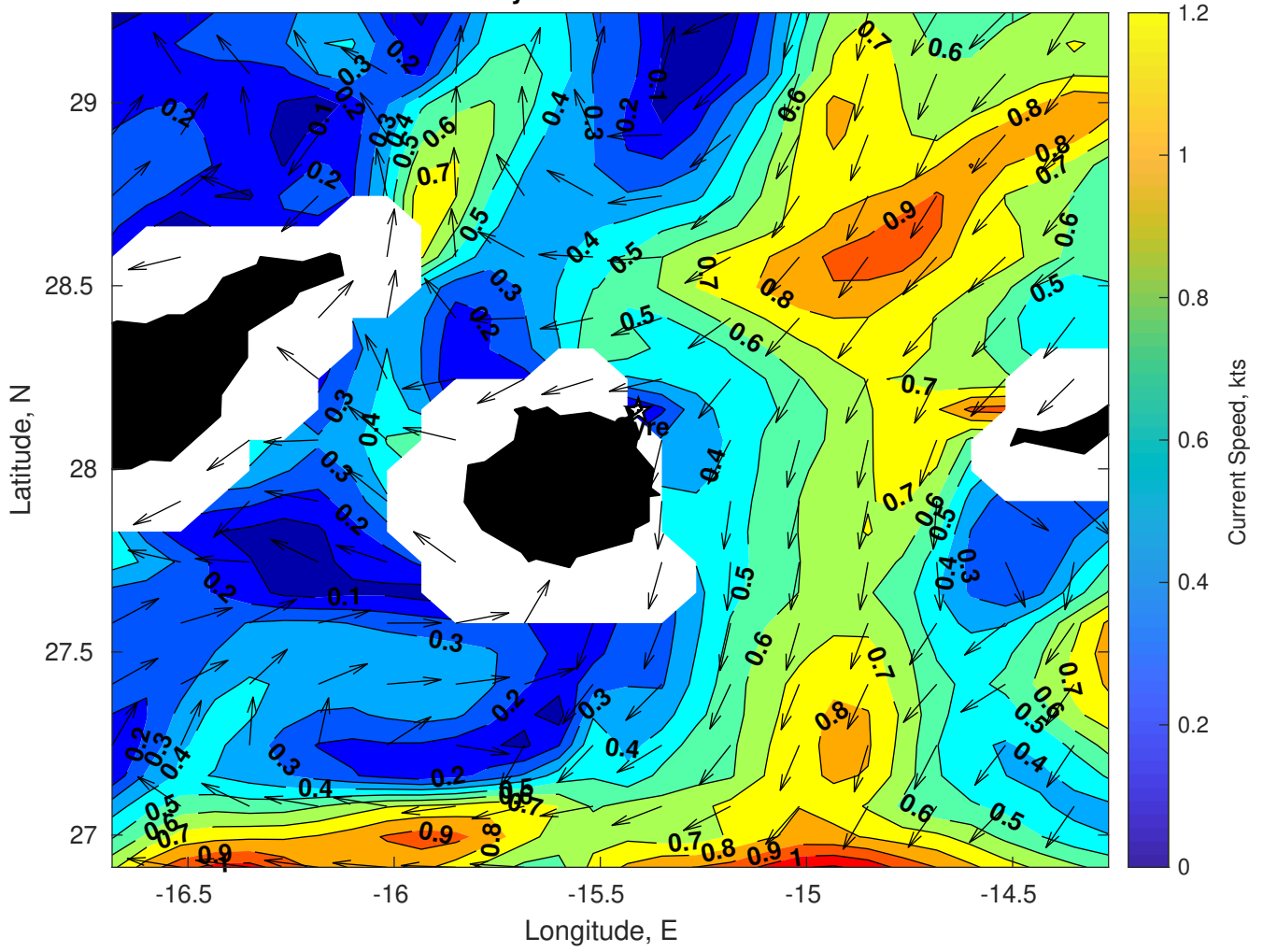
Wave Period (sec) for Gyre at 20-Feb-2025 09:00:00



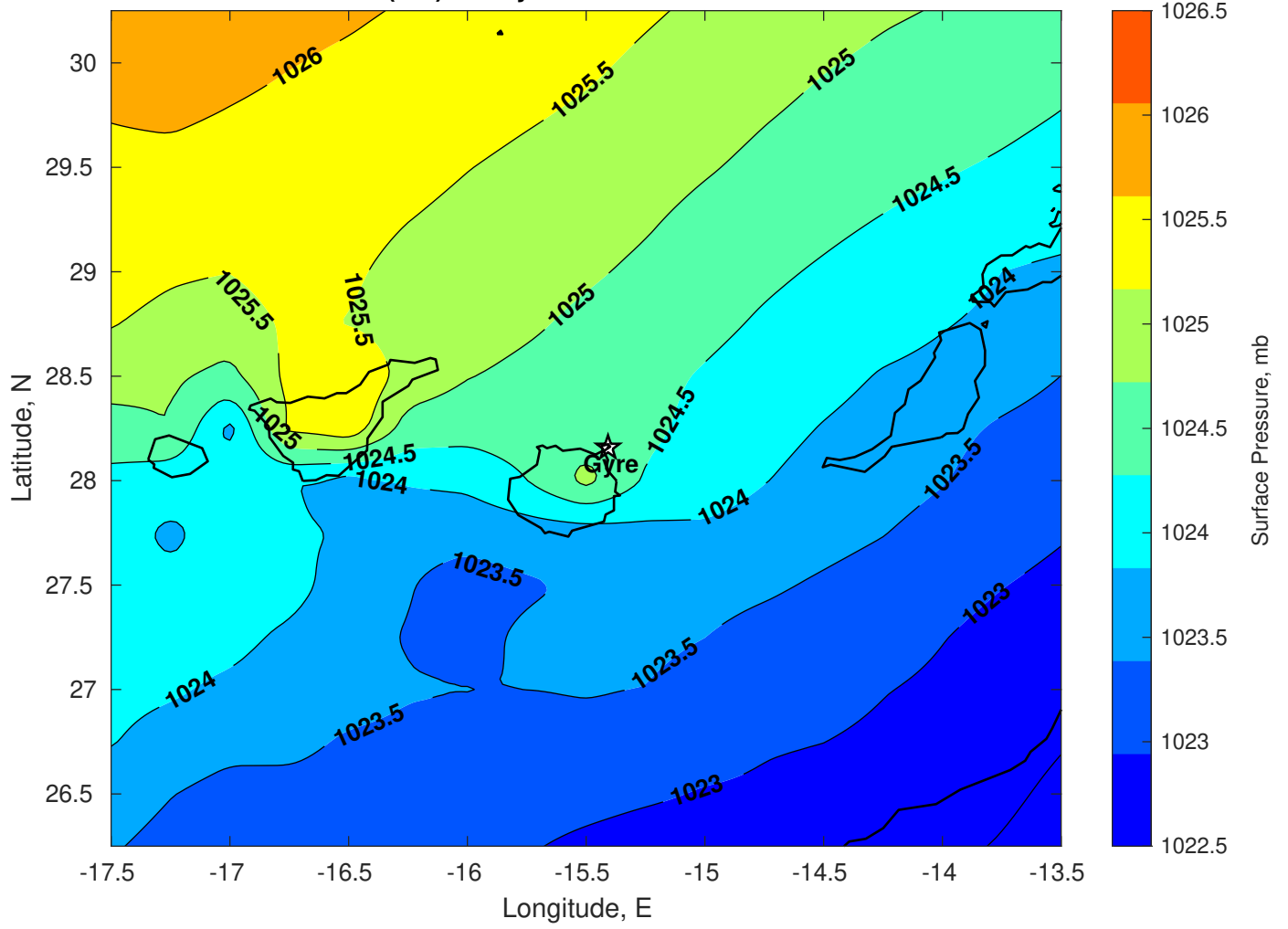
Winds (kts) for Gyre at 20-Feb-2025 09:00:00



Surface Currents for Gyre at 19-Feb-2025 00:00:00

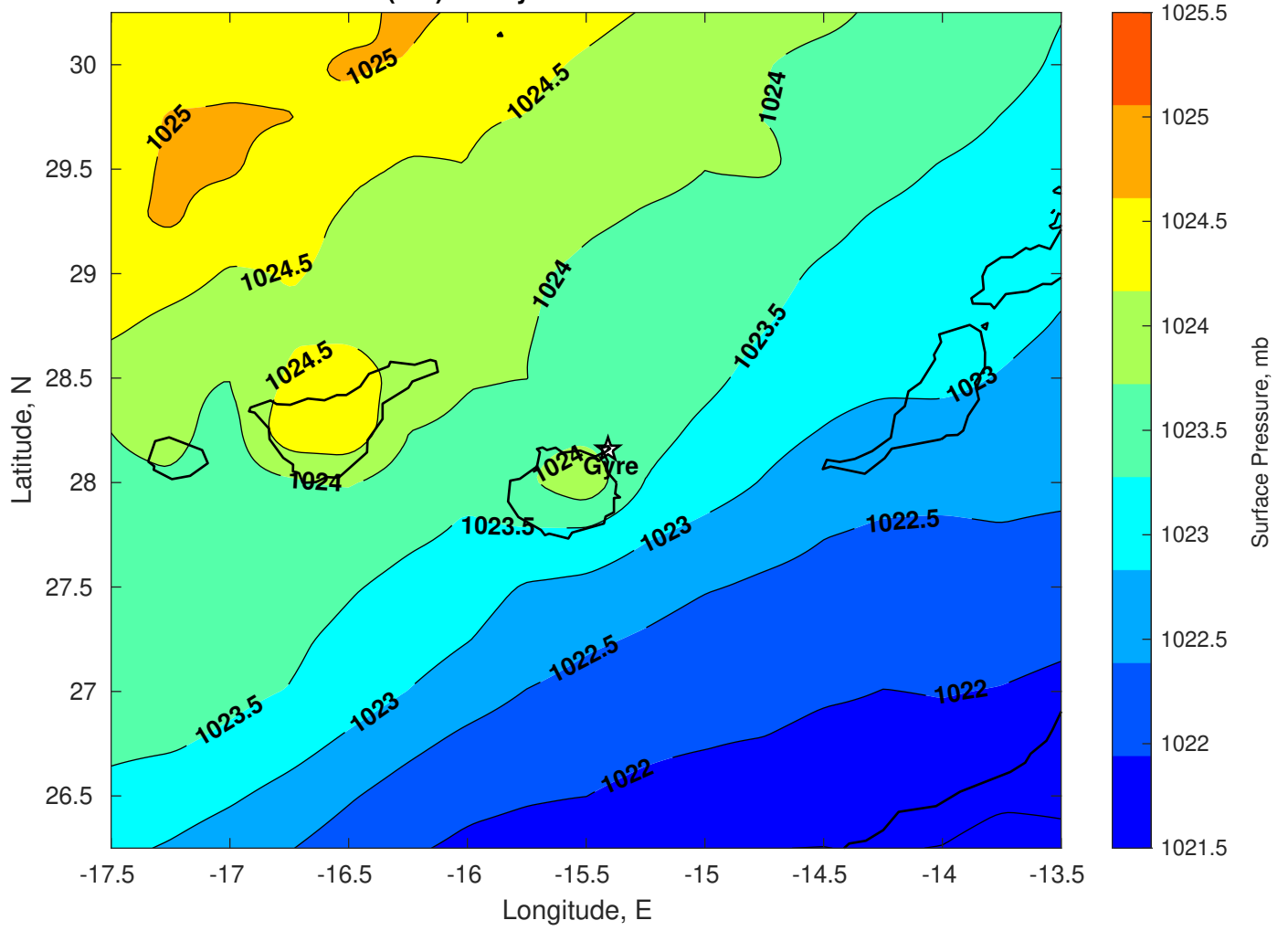


Surface Pressure (mb) for Gyre at 20-Feb-2025 00:00:00

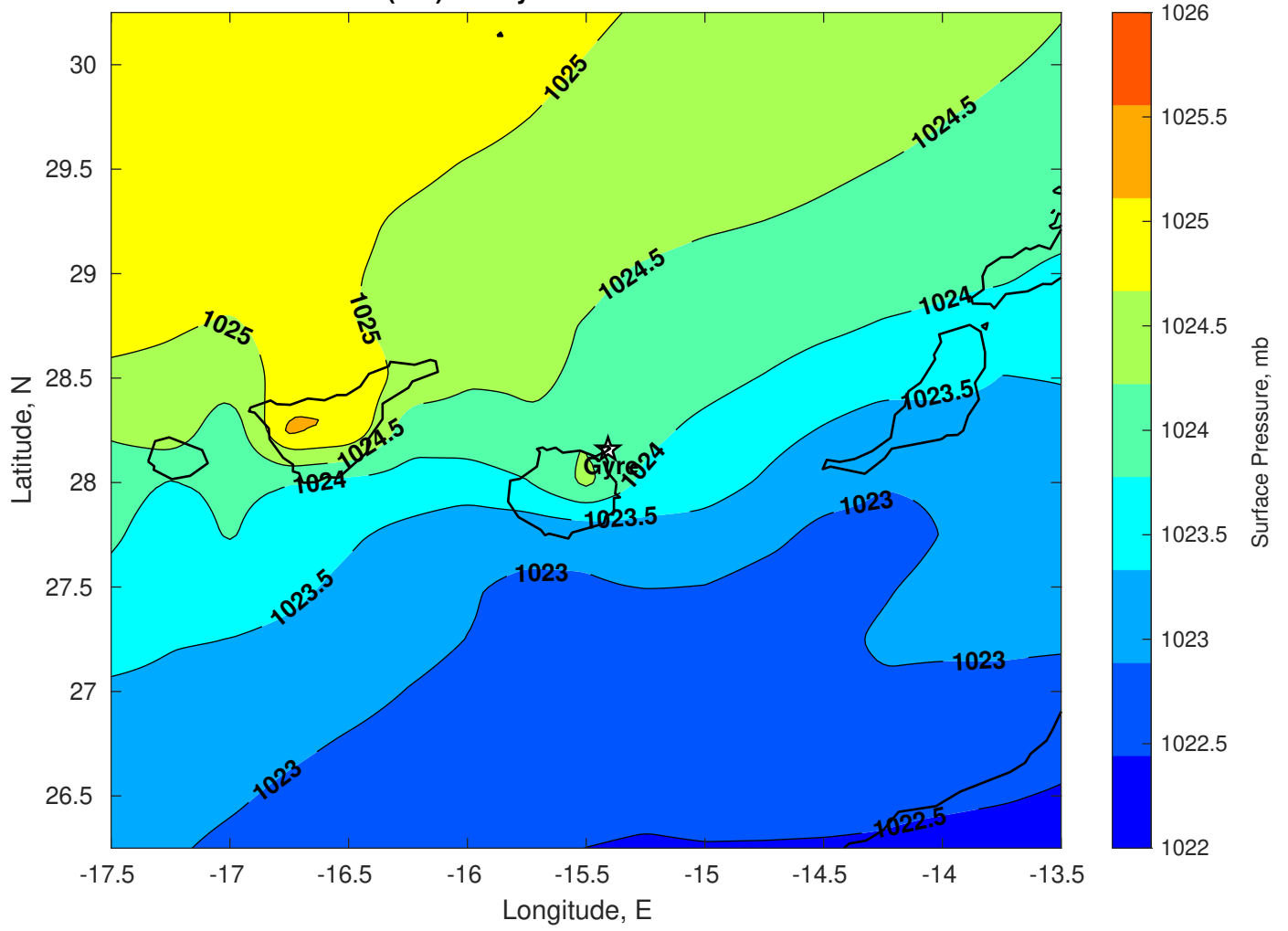




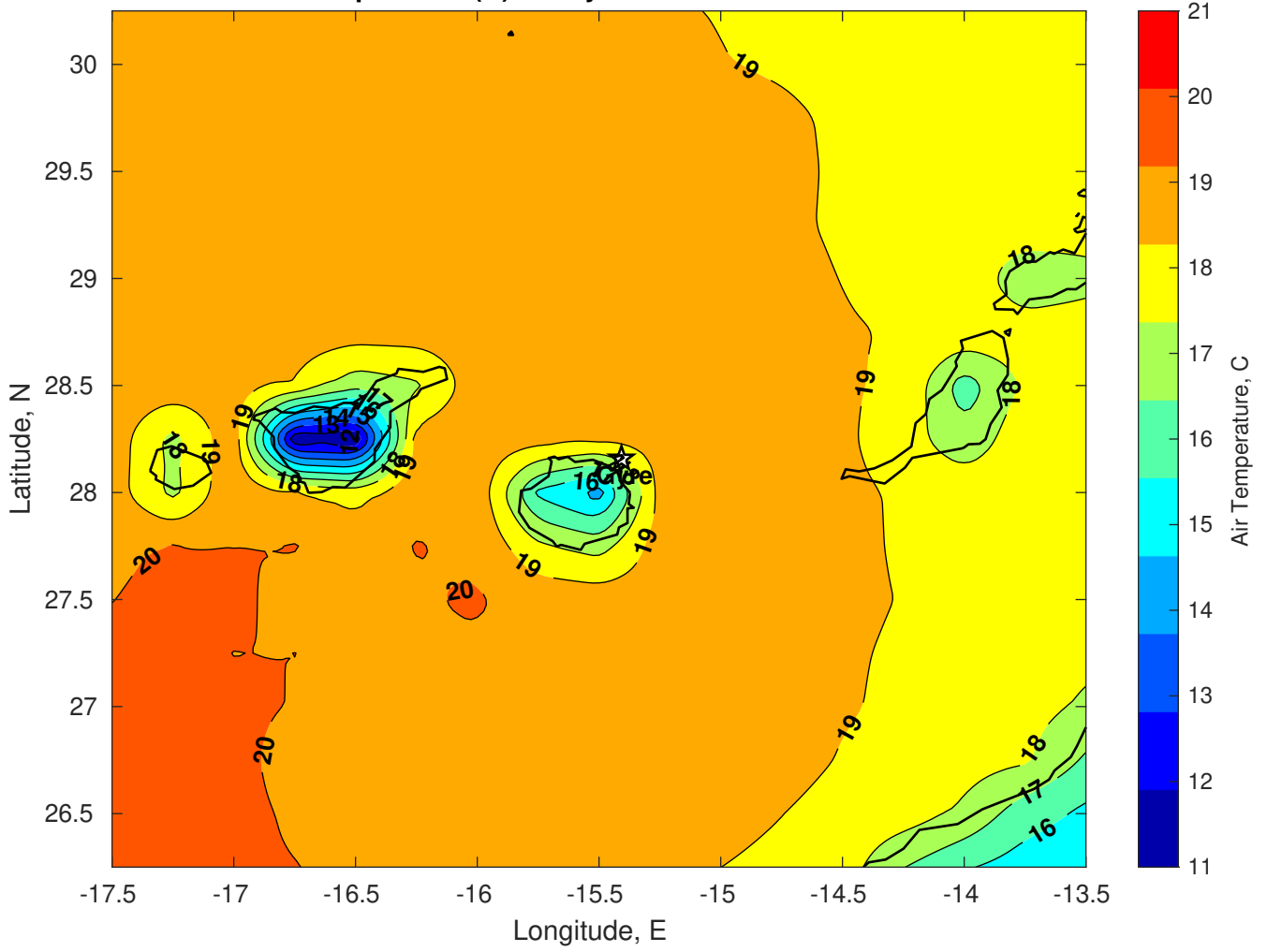
Surface Pressure (mb) for Gyre at 21-Feb-2025 00:00:00



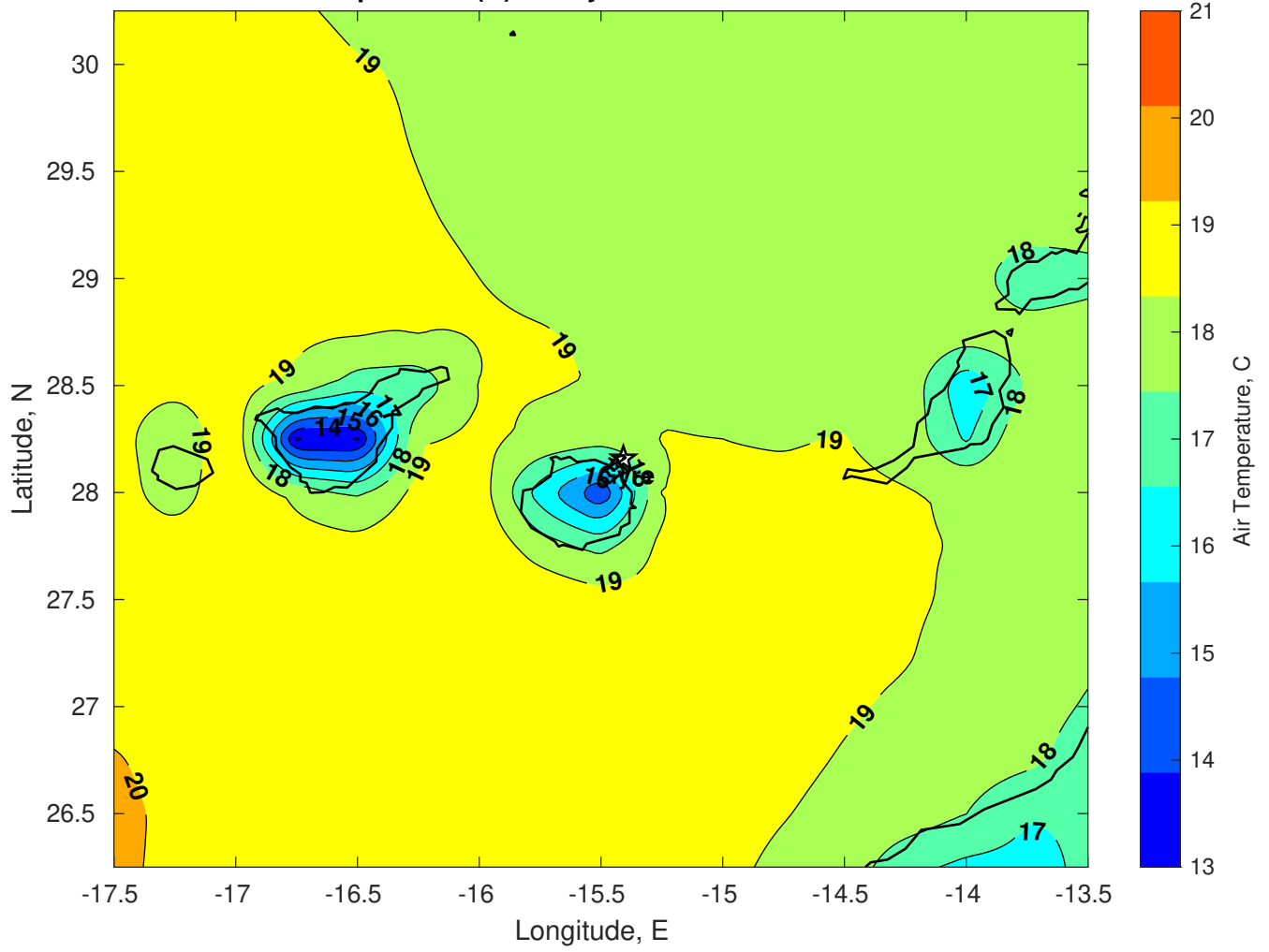
Surface Pressure (mb) for Gyre at 22-Feb-2025 00:00:00



Air Temperature (C) for Gyre at 20-Feb-2025



Air Temperature (C) for Gyre at 20-Feb-2025



Air Temperature (C) for Gyre at 20-Feb-2025

