
Marine Weather Forecast for Nautilus
Forecast valid as of 20-Feb-2025 0900 GMT

All times are local.

Today

Winds: E, 10-15 kts.
Waves: NW, 5-6 feet, 13-14 sec.
No currents available.

Tonight

Winds: E, 5-10 kts.
Waves: NW, 4-5 feet, 12-13 sec.
No currents available.

Friday

Winds: E, 5-10 kts.
Waves: NW, 5-6 feet, 18-19 sec.
No currents available.

Friday Night

Winds: NE, 5-10 kts.
Waves: NW, 5-6 feet, 16-17 sec.
No currents available.

Saturday

Winds: E, 5-10 kts.
Waves: NW, 5-6 feet, 15-16 sec.
No currents available.

Saturday Night

Winds: E, 10-15 kts.
Waves: NW, 5-6 feet, 14-15 sec.
No currents available.

Sunday

Winds: E, 5-10 kts.
Waves: NW, 5-6 feet, 13-14 sec.
No currents available.

Sunday Night

Winds: NE, 5-10 kts.
Waves: NW, 5-6 feet, 13-14 sec.
No currents available.

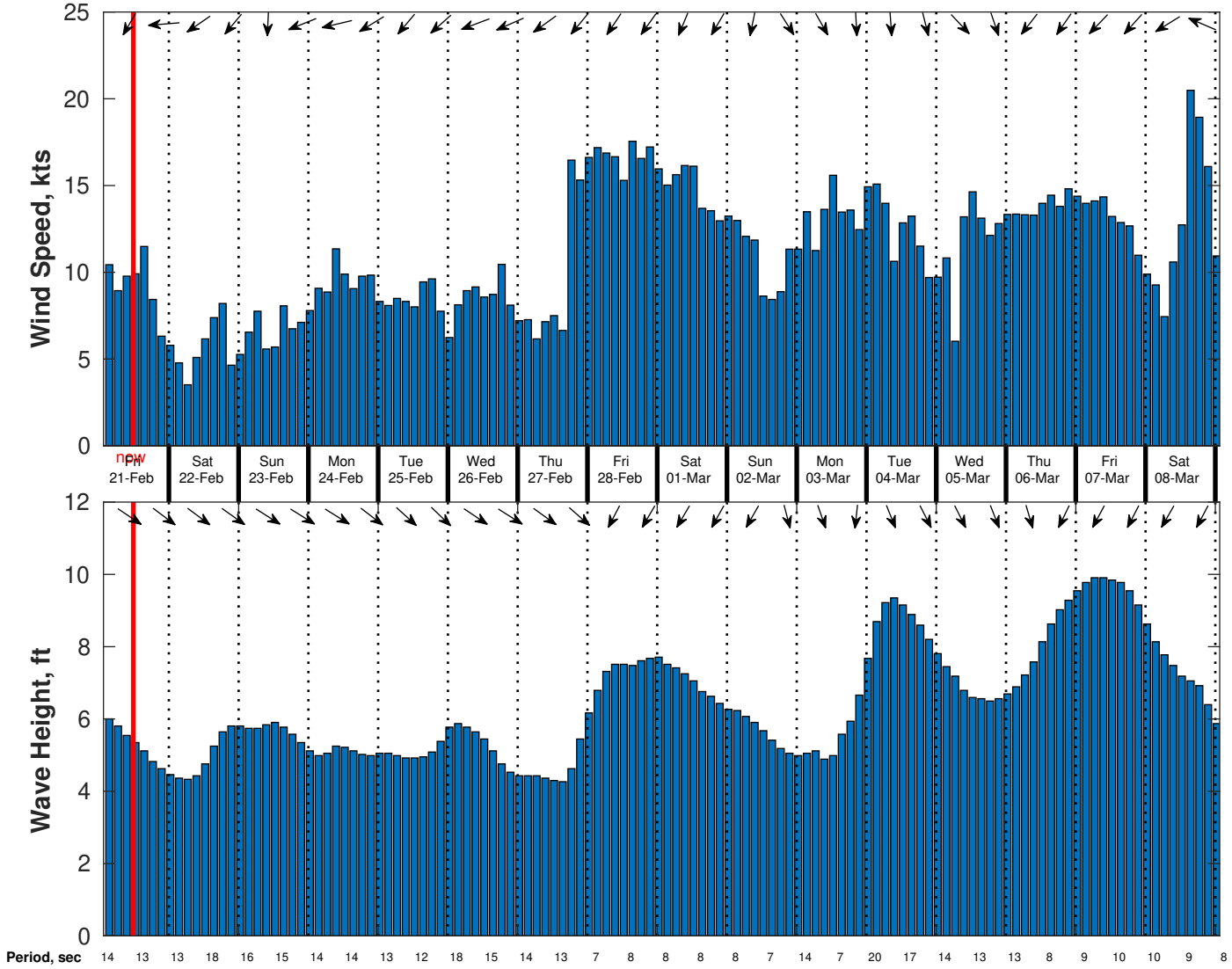
Monday

Winds: NE, 5-10 kts.
Waves: NW, 5-6 feet, 19-20 sec.
No currents available.

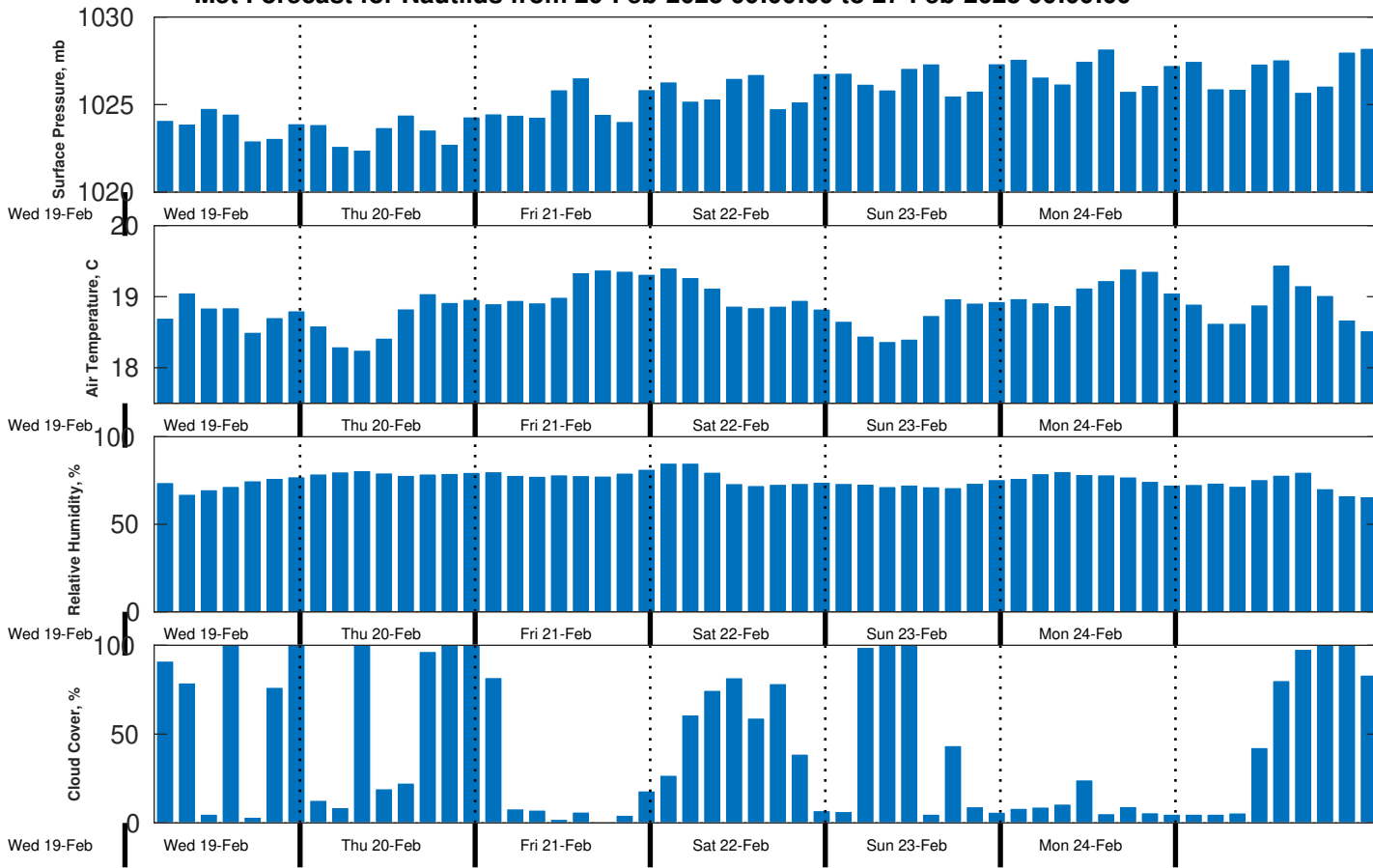
Monday Night

Winds: E, 5-10 kts.
Waves: NW, 5-6 feet, 18-19 sec.
No currents available.

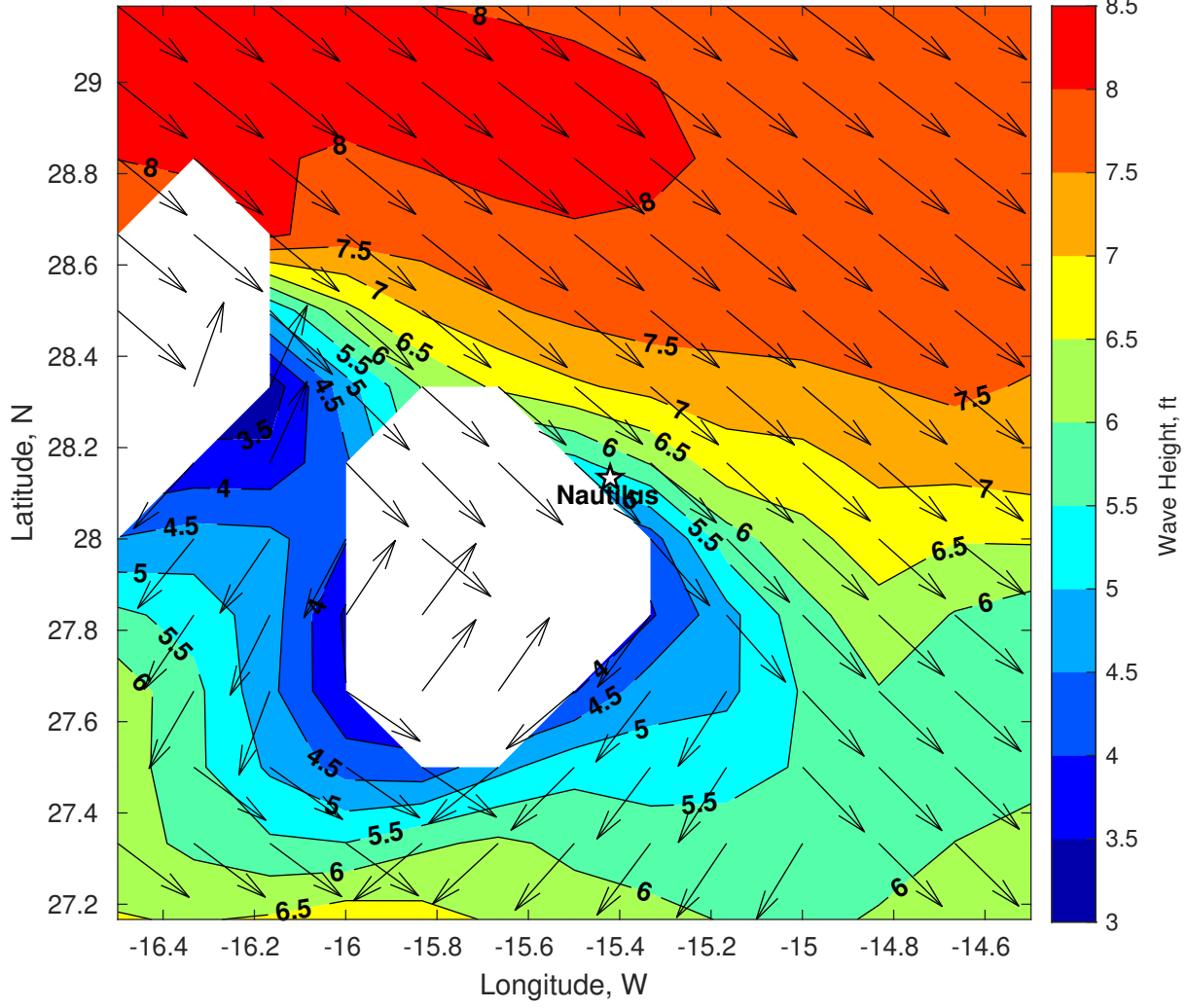
Wind & Wave Forecast for Nautilus from 20-Feb-2025 02:00:00 to 08-Mar-2025 02:00:00



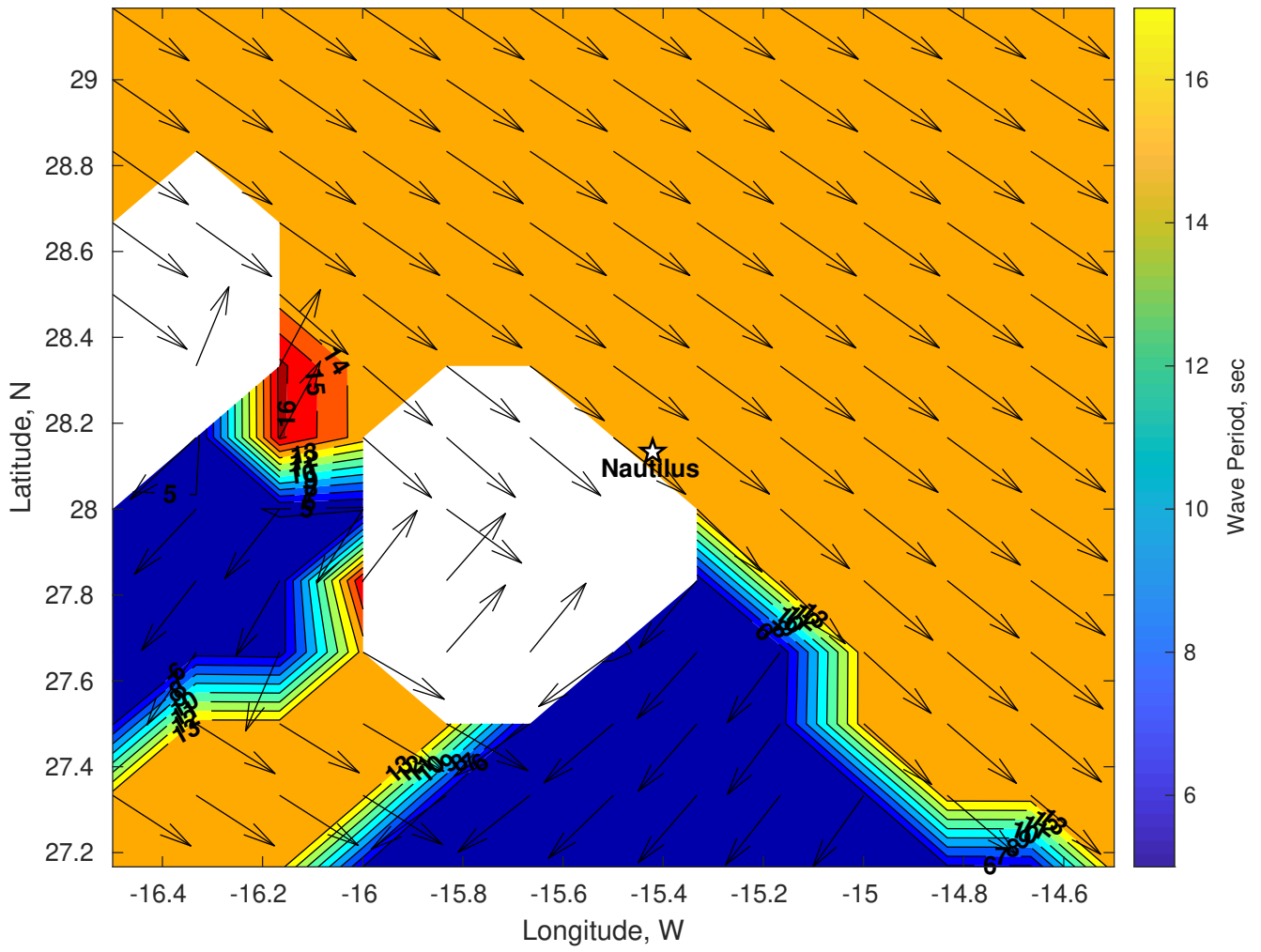
Met Forecast for Nautilus from 20-Feb-2025 00:00:00 to 27-Feb-2025 00:00:00



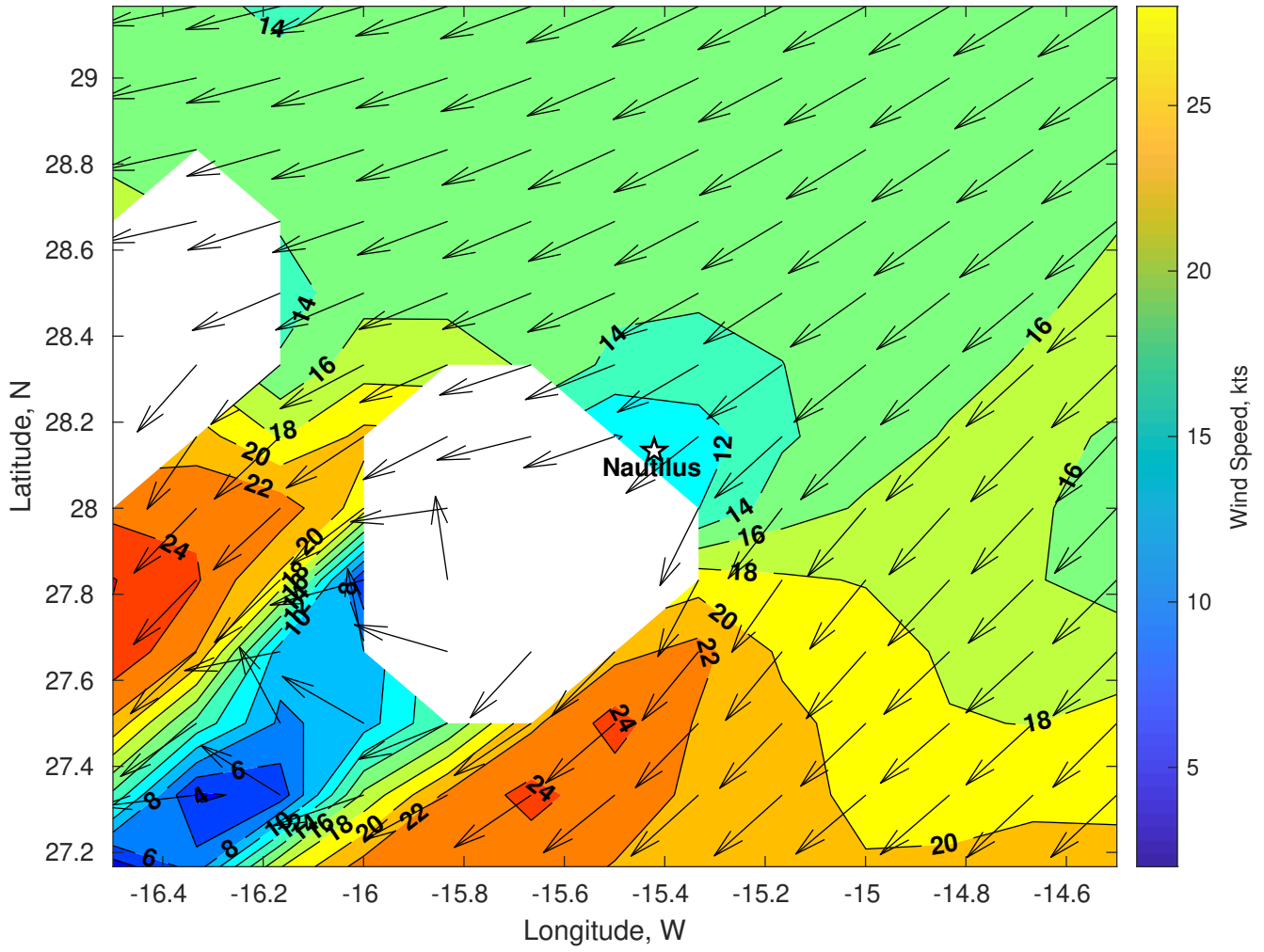
Wave Height (ft) for Nautilus at 20-Feb-2025 09:00:00



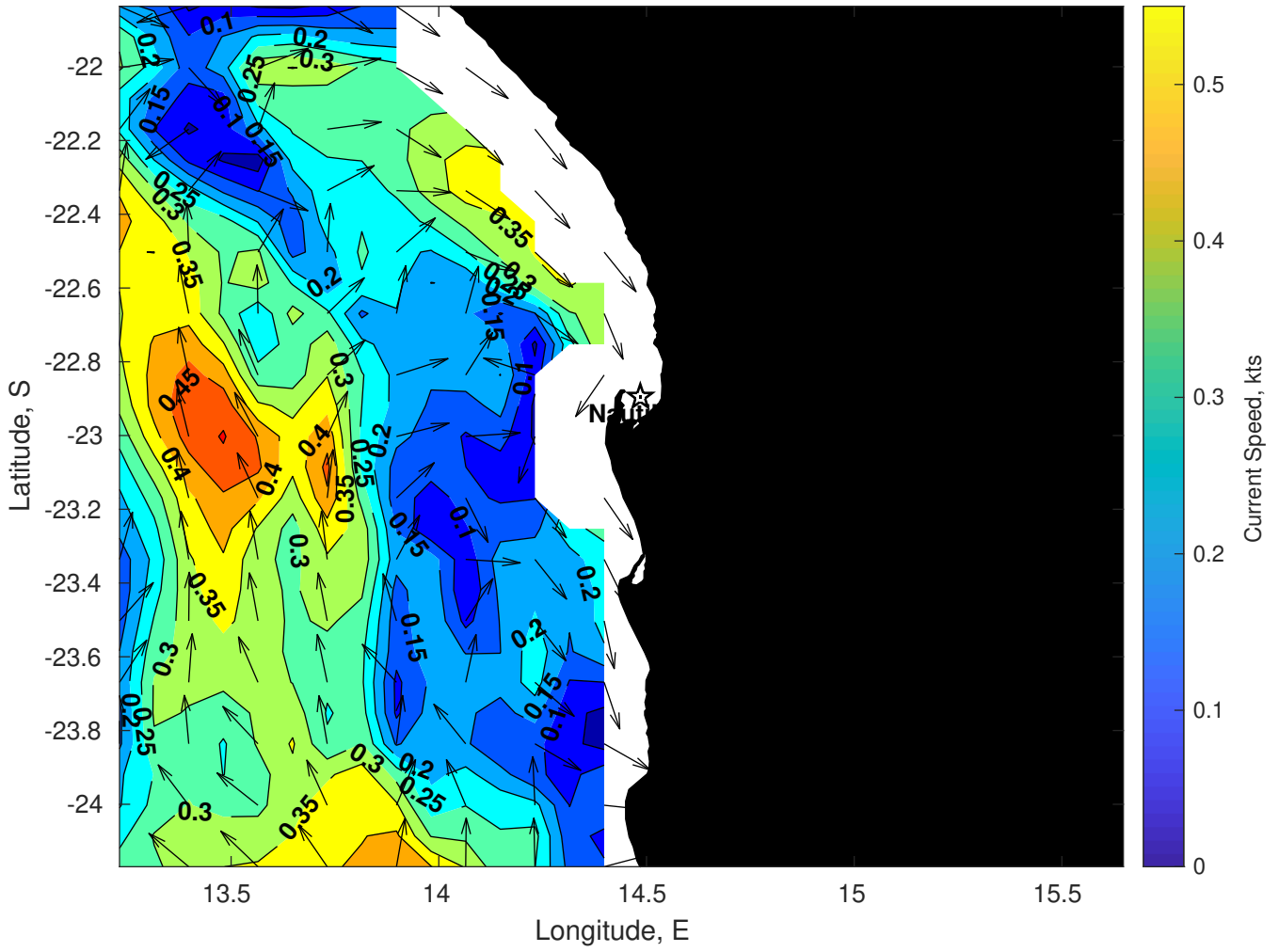
Wave Period (sec) for Nautilus at 20-Feb-2025 09:00:00



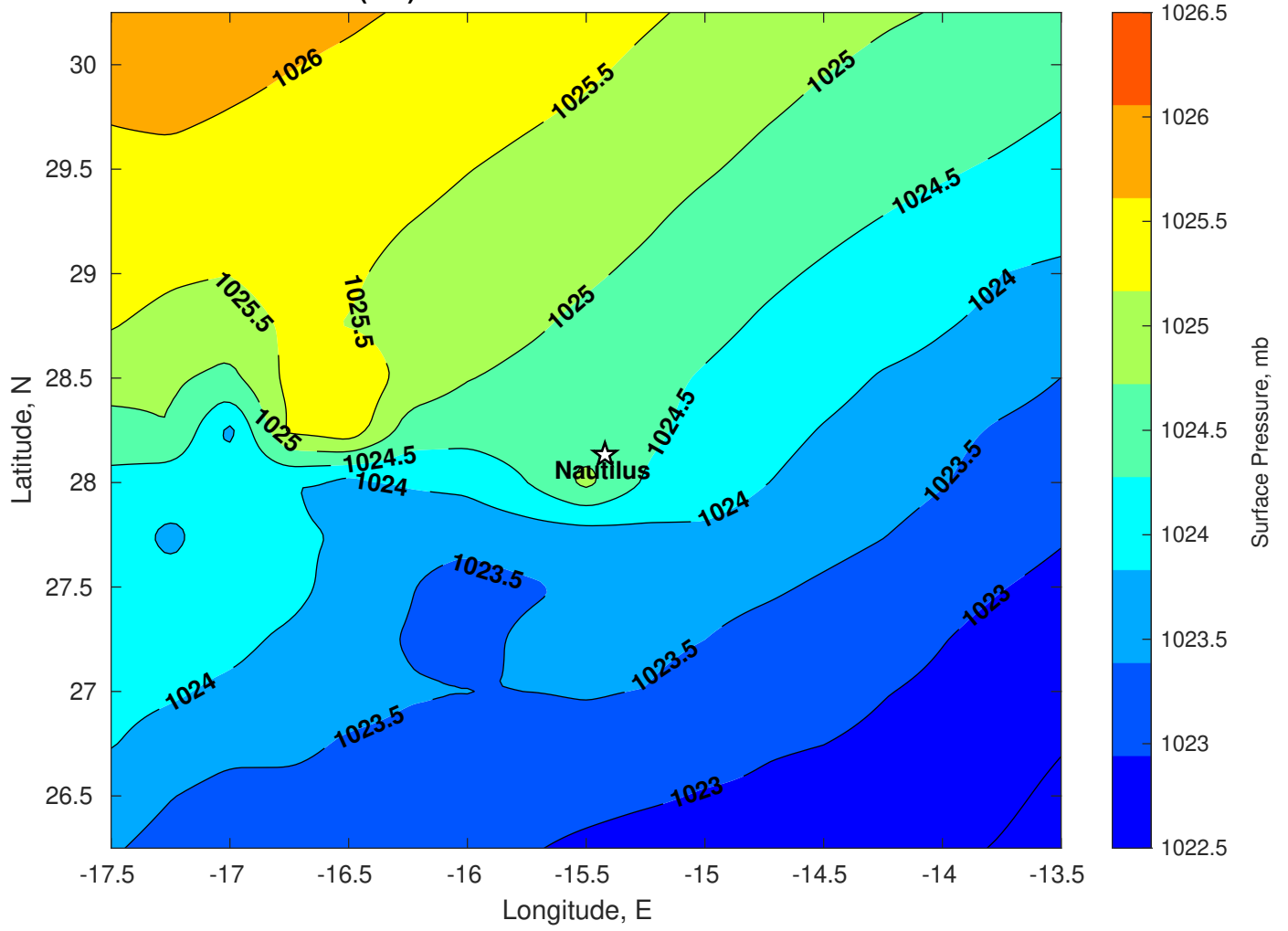
Winds (kts) for Nautilus at 20-Feb-2025 09:00:00



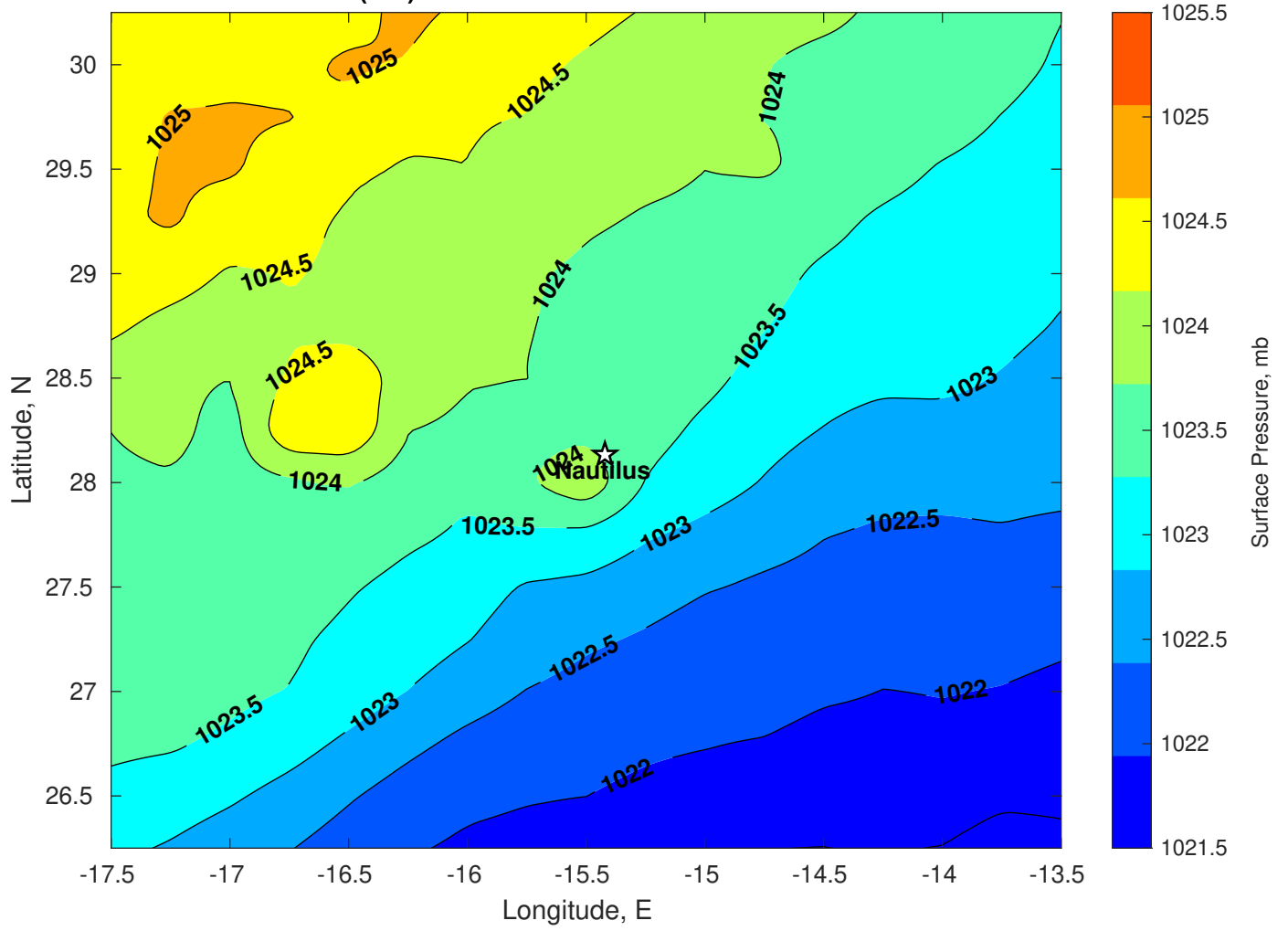
Surface Currents for Nautilus at 19-Feb-2025 00:00:00



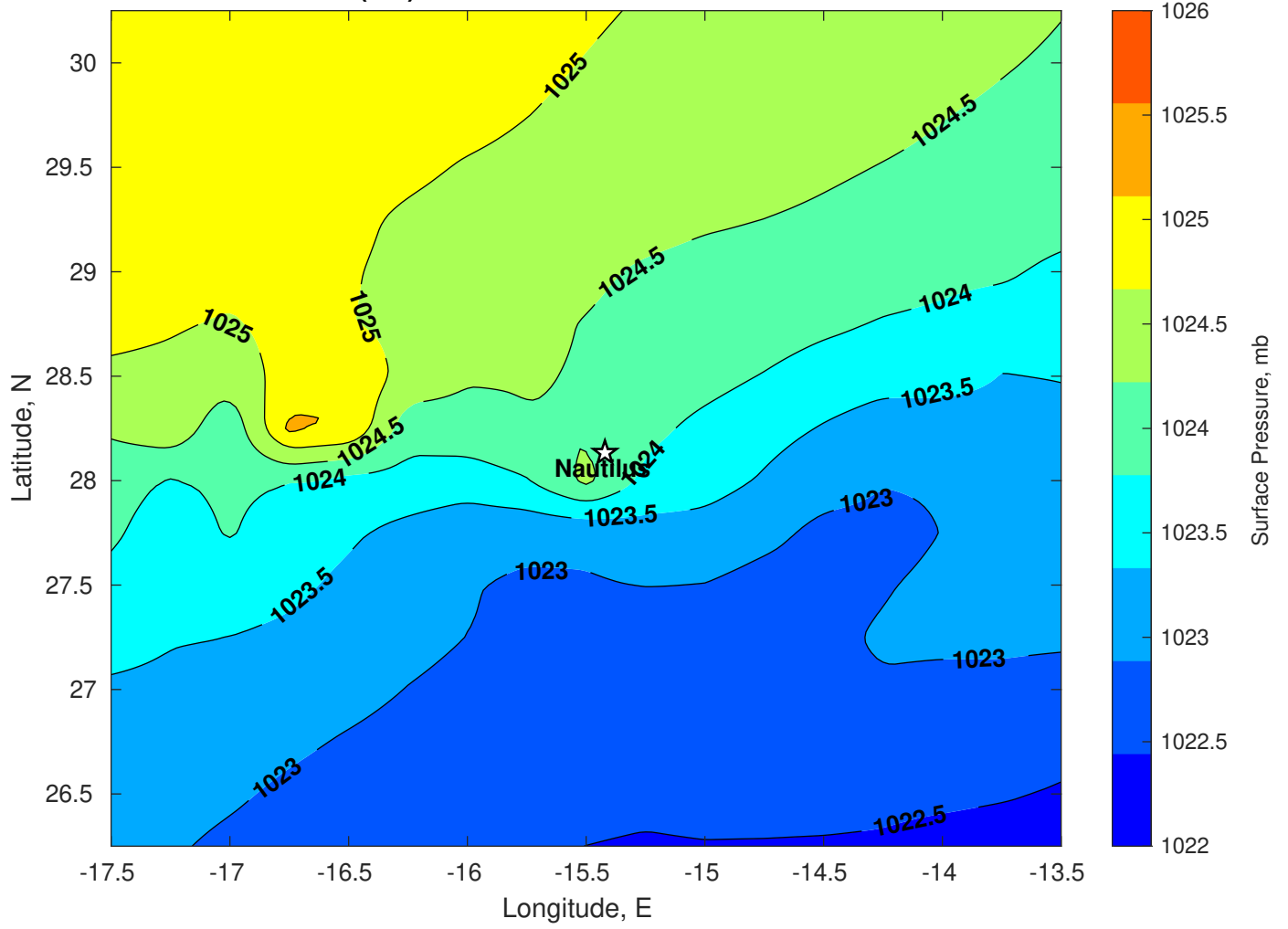
Surface Pressure (mb) for Nautilus at 20-Feb-2025 00:00:00



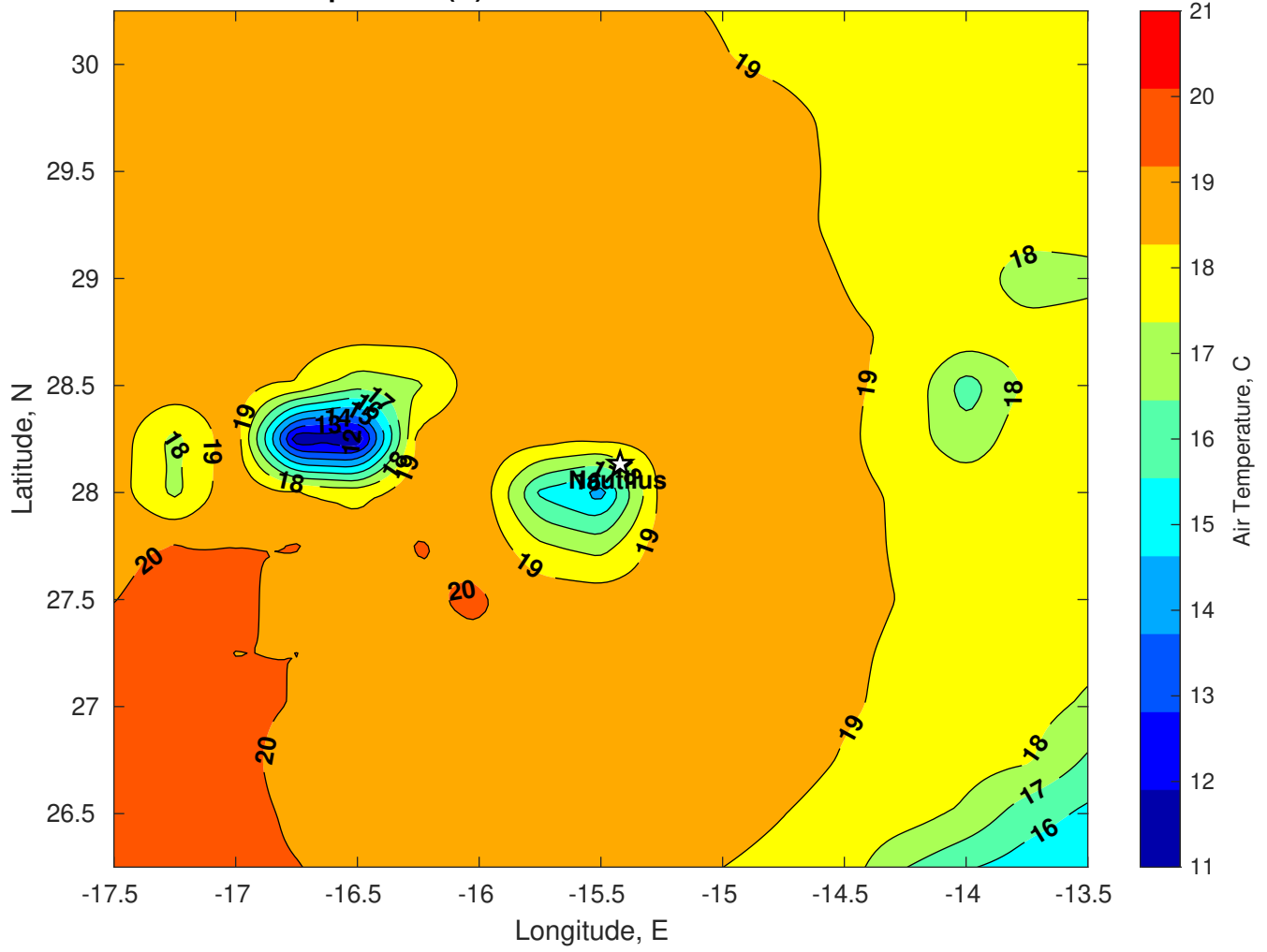
Surface Pressure (mb) for Nautilus at 21-Feb-2025 00:00:00



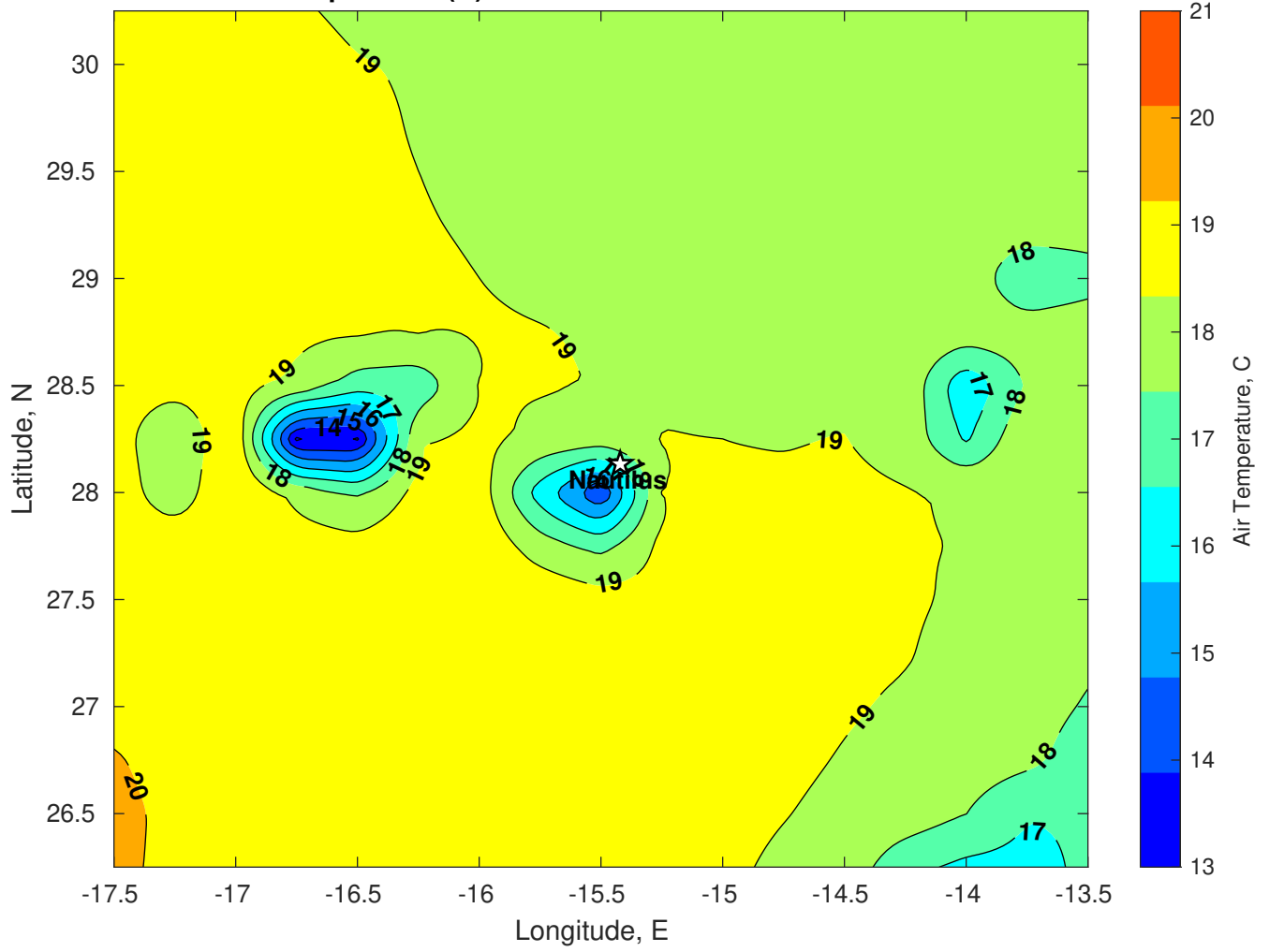
Surface Pressure (mb) for Nautilus at 22-Feb-2025 00:00:00



Air Temperature (C) for Nautilus at 20-Feb-2025



Air Temperature (C) for Nautilus at 20-Feb-2025



Air Temperature (C) for Nautilus at 20-Feb-2025

