

\*\*\*\*\*  
Marine Weather Forecast for TOTAL Namibia GTS  
Forecast valid as of 20-Feb-2025 0900 GMT  
\*\*\*\*\*

All times are local.

Today

Winds: N, 15-20 kts.  
Waves: NW, 6-7 feet, 10-11 sec.  
No currents available.

Tonight

Winds: N, 10-15 kts.  
Waves: NW, 6-7 feet, 10-11 sec.  
No currents available.

Friday

Winds: N, 10-15 kts.  
Waves: NW, 5-6 feet, 10-11 sec.  
No currents available.

Friday Night

Winds: NE, 5-10 kts.  
Waves: NW, 4-5 feet, 13-14 sec.  
No currents available.

Saturday

Winds: NE, 5-10 kts.  
Waves: NW, 4-5 feet, 12-13 sec.  
No currents available.

Saturday Night

Winds: NE, 5-10 kts.  
Waves: NW, 4-5 feet, 11-12 sec.  
No currents available.

Sunday

Winds: NE, 15-20 kts.  
Waves: NW, 6-7 feet, 13-14 sec.  
No currents available.

Sunday Night

Winds: NE, 15-20 kts.  
Waves: NW, 7-8 feet, 12-13 sec.  
No currents available.

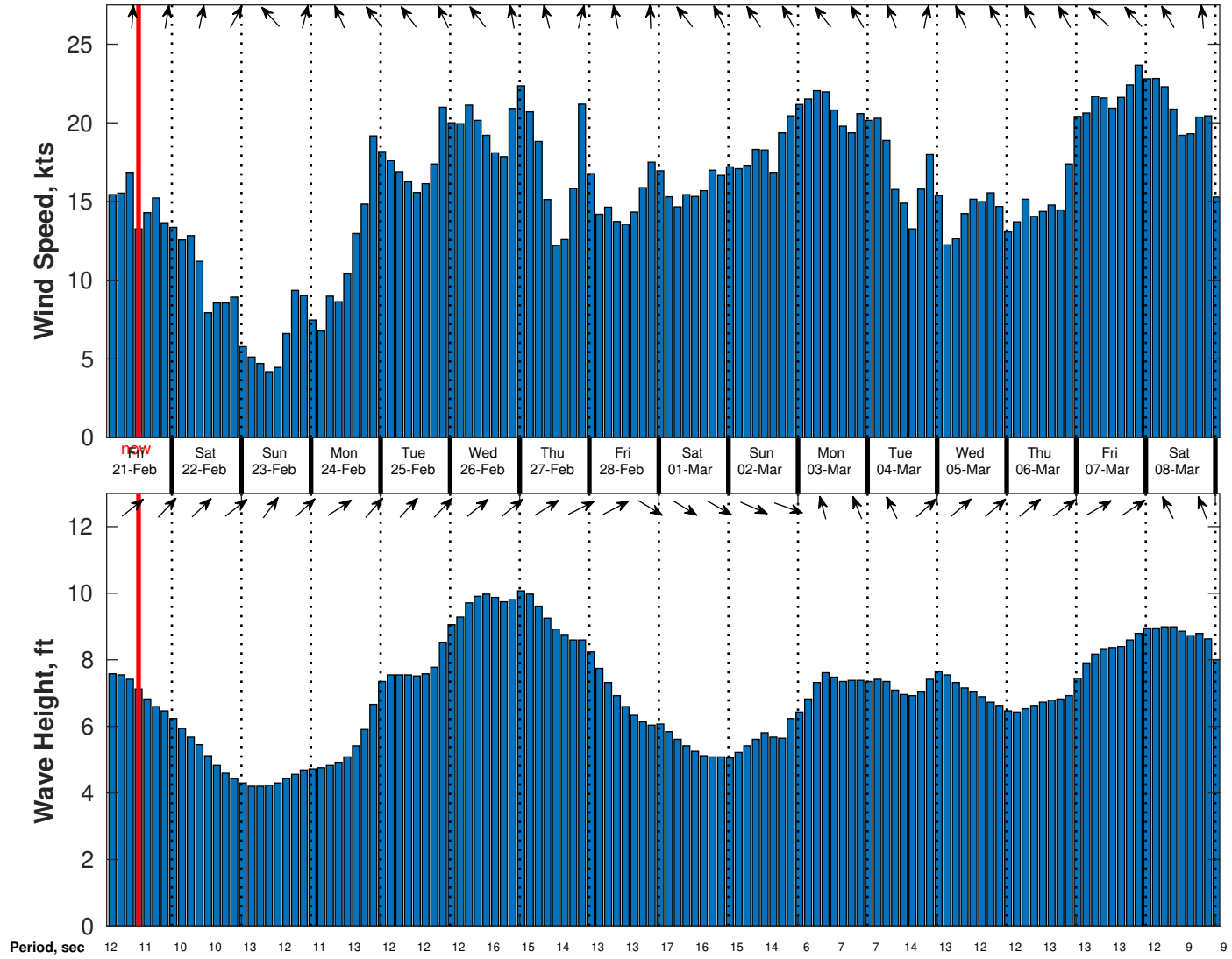
Monday

Winds: NE, 20-25 kts.  
Waves: NW, 8-9 feet, 11-12 sec.  
No currents available.

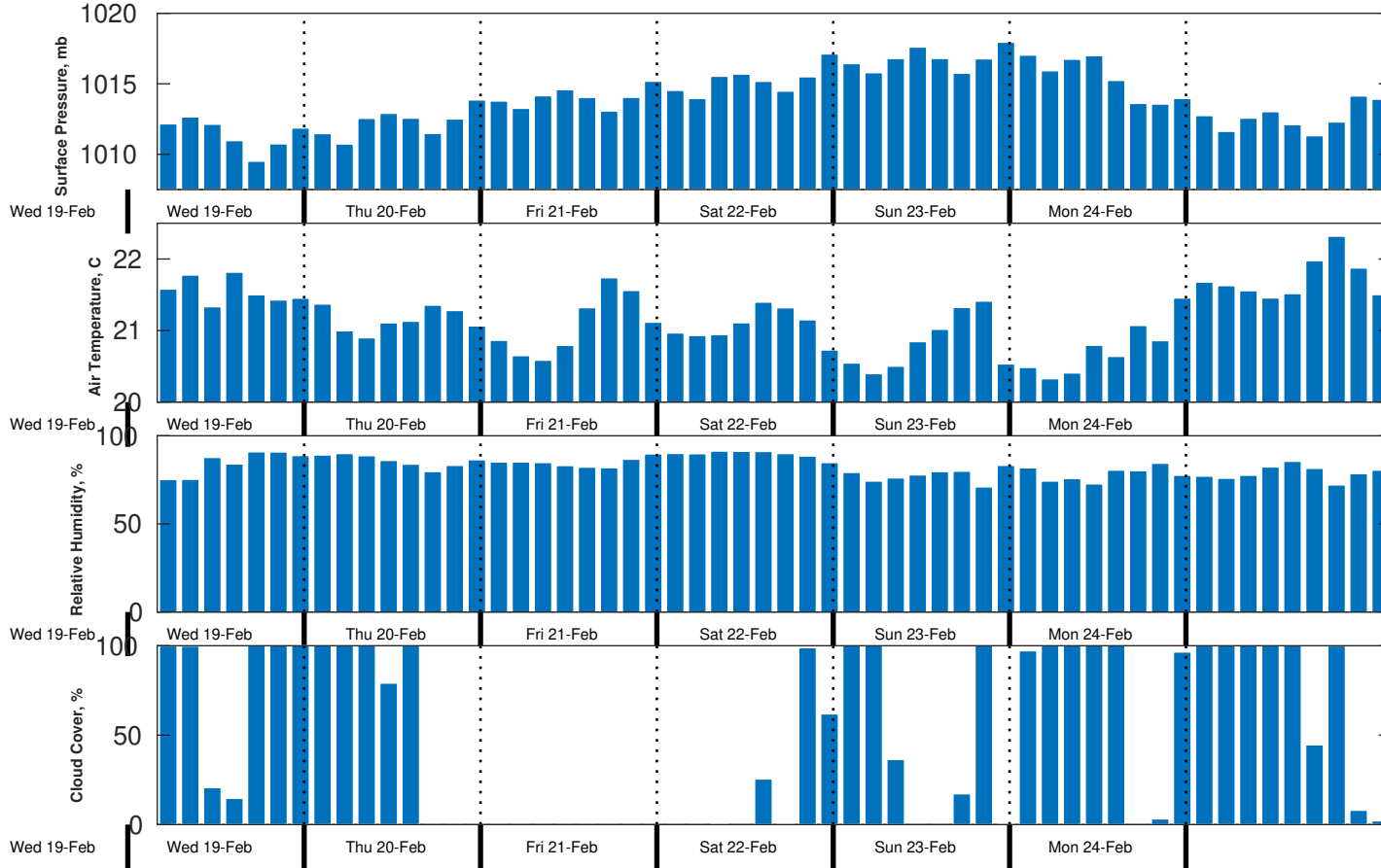
Monday Night

Winds: NE, 20-25 kts.  
Waves: NW, 9-10 feet, 17-18 sec.  
No currents available.

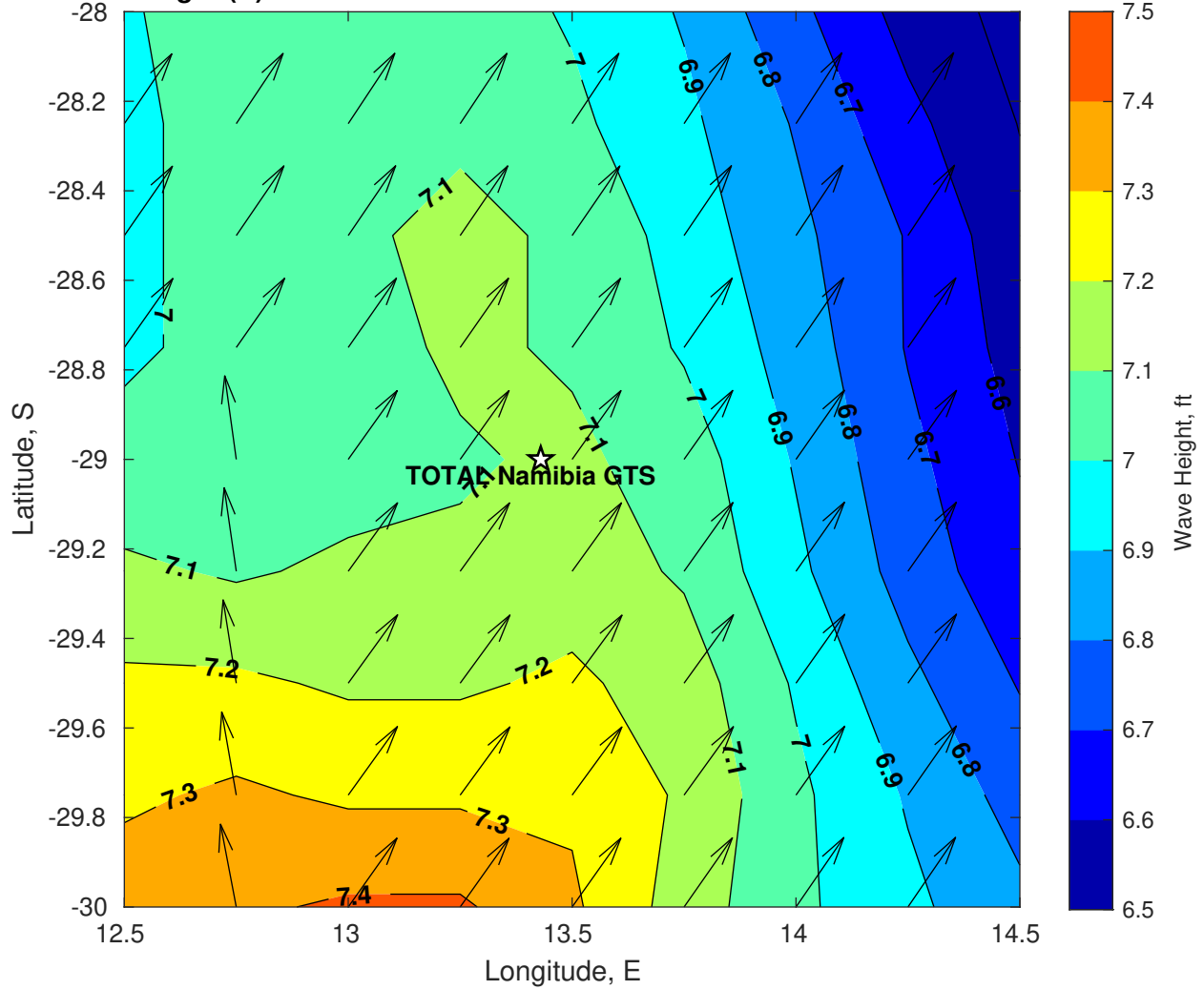
Wind & Wave Forecast for TOTAL Namibia GTS from 20-Feb-2025 02:00:00 to 08-Mar-2025 02:00:00



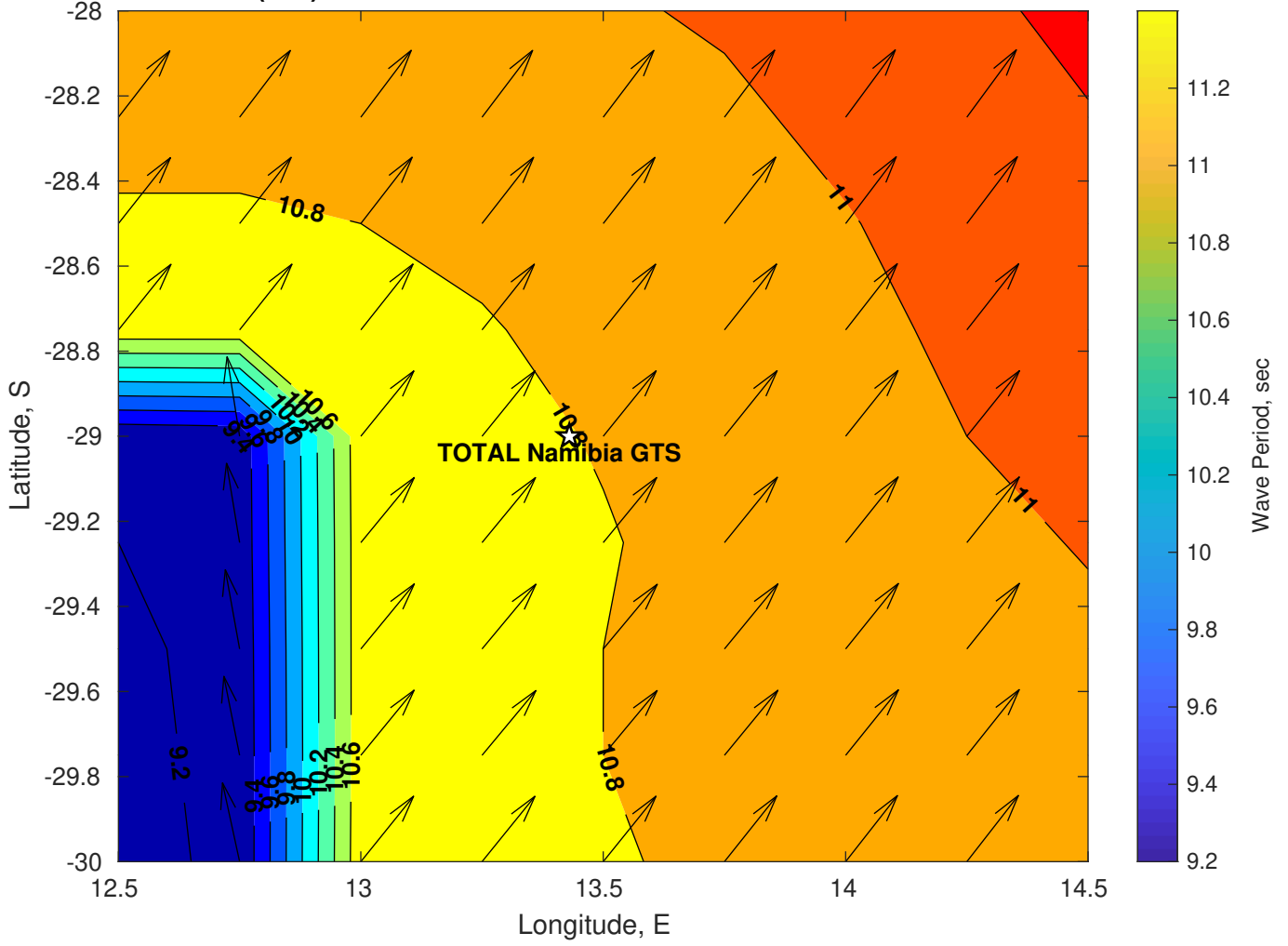
**Met Forecast for TOTAL Namibia GTS from 20-Feb-2025 00:00:00 to 27-Feb-2025 00:00:00**



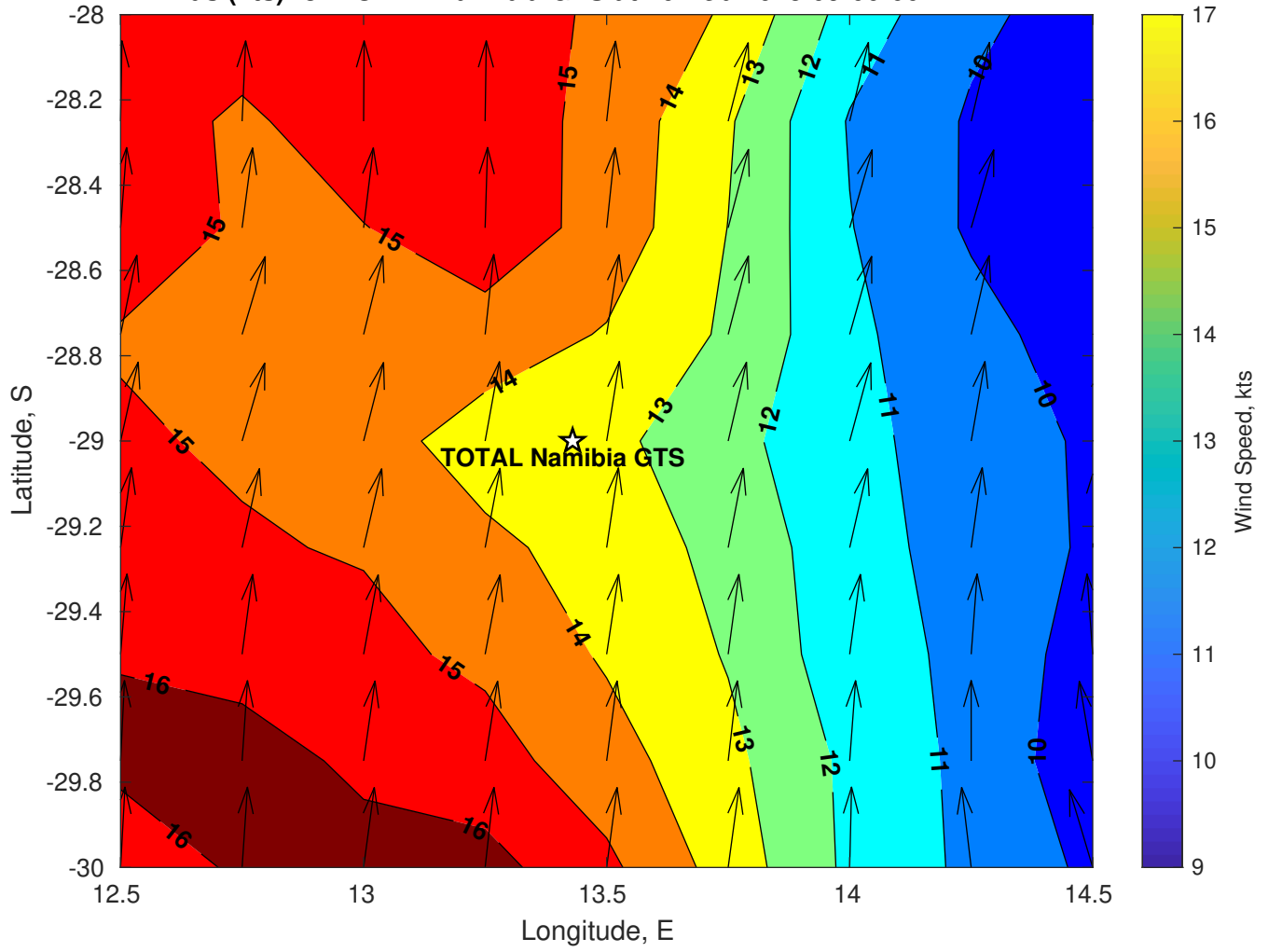
Wave Height (ft) for TOTAL Namibia GTS at 20-Feb-2025 09:00:00



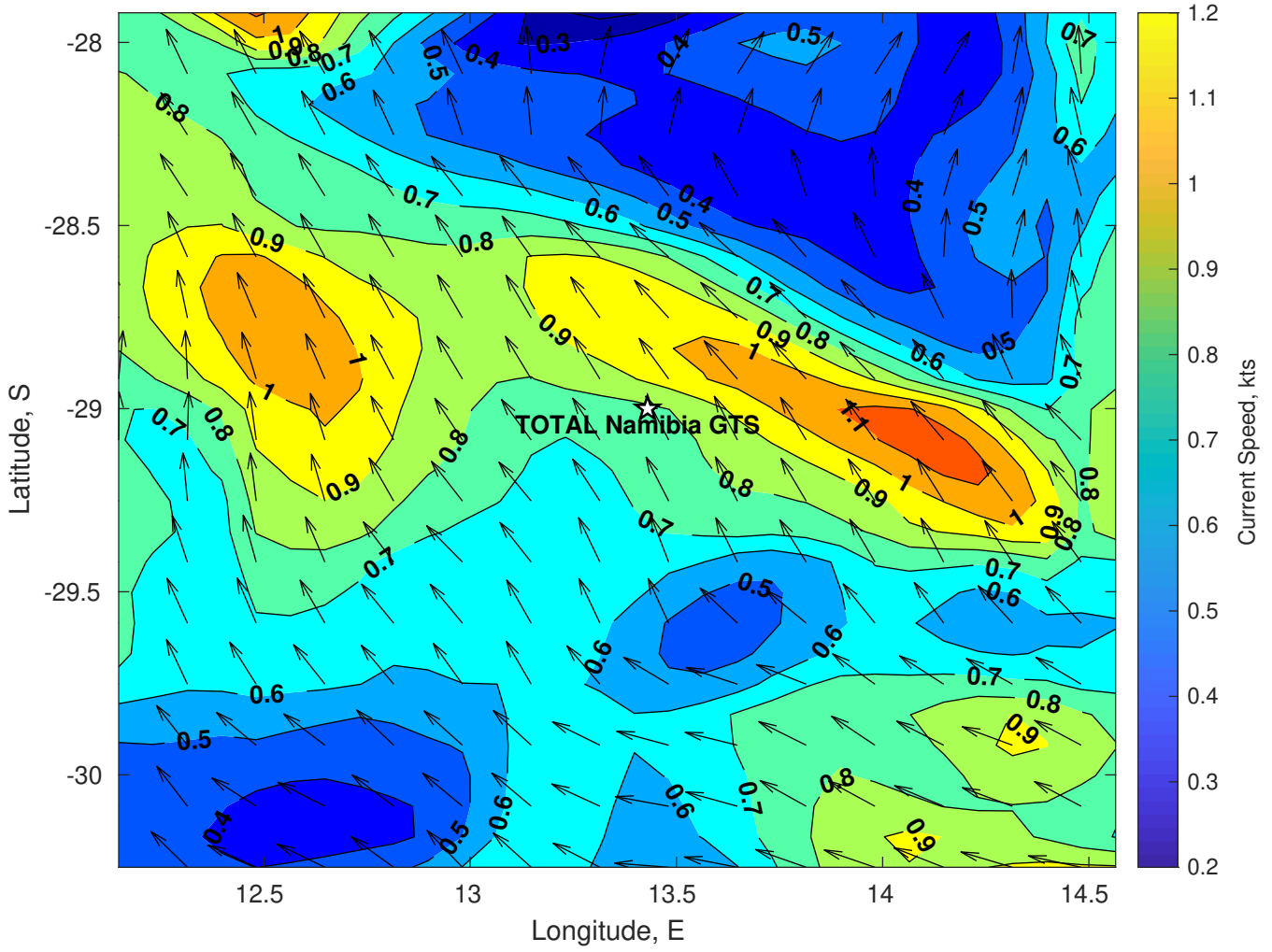
Wave Period (sec) for TOTAL Namibia GTS at 20-Feb-2025 09:00:00



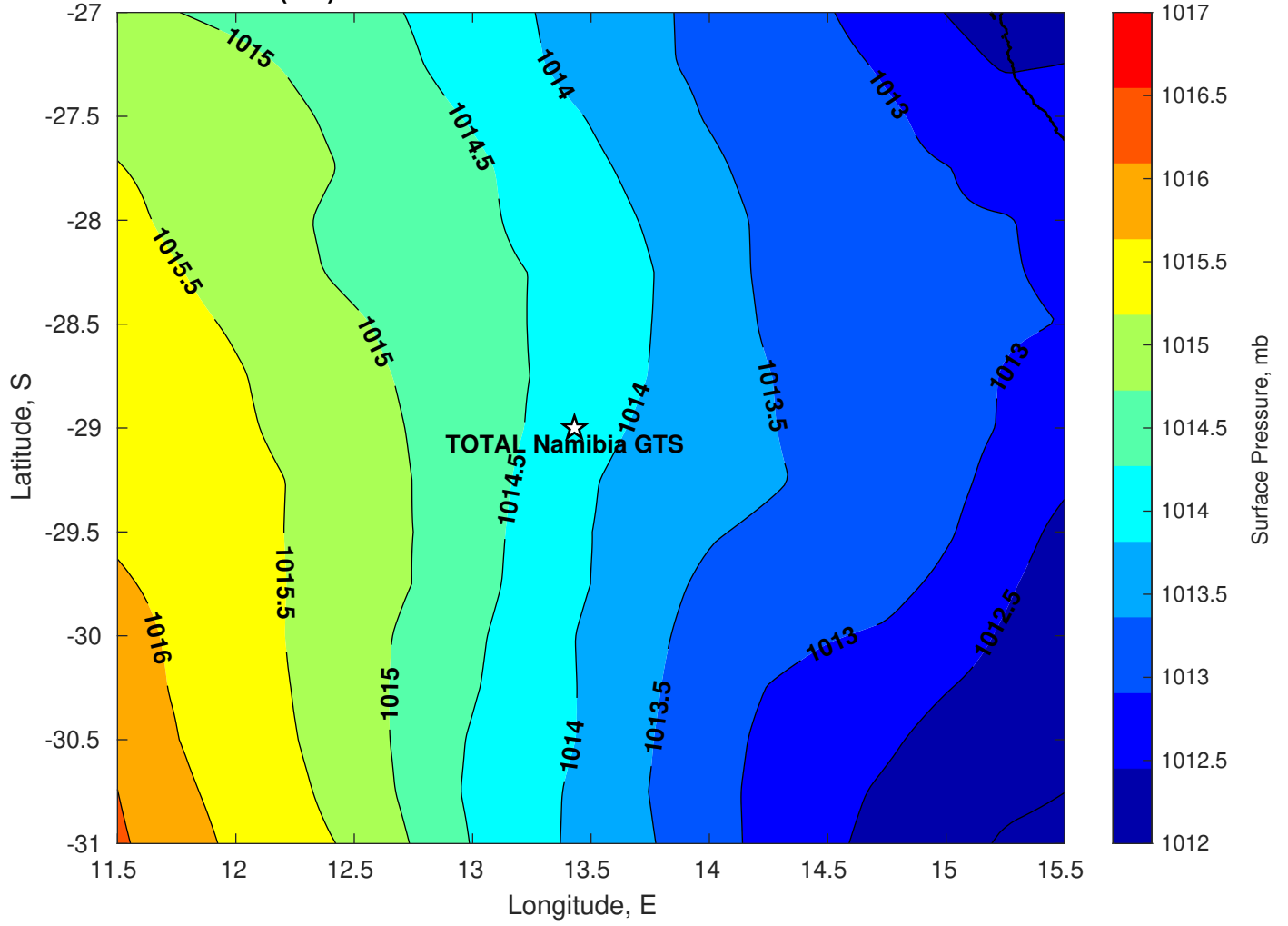
Winds (kts) for TOTAL Namibia GTS at 20-Feb-2025 09:00:00



Surface Currents for TOTAL Namibia GTS at 19-Feb-2025 00:00:00

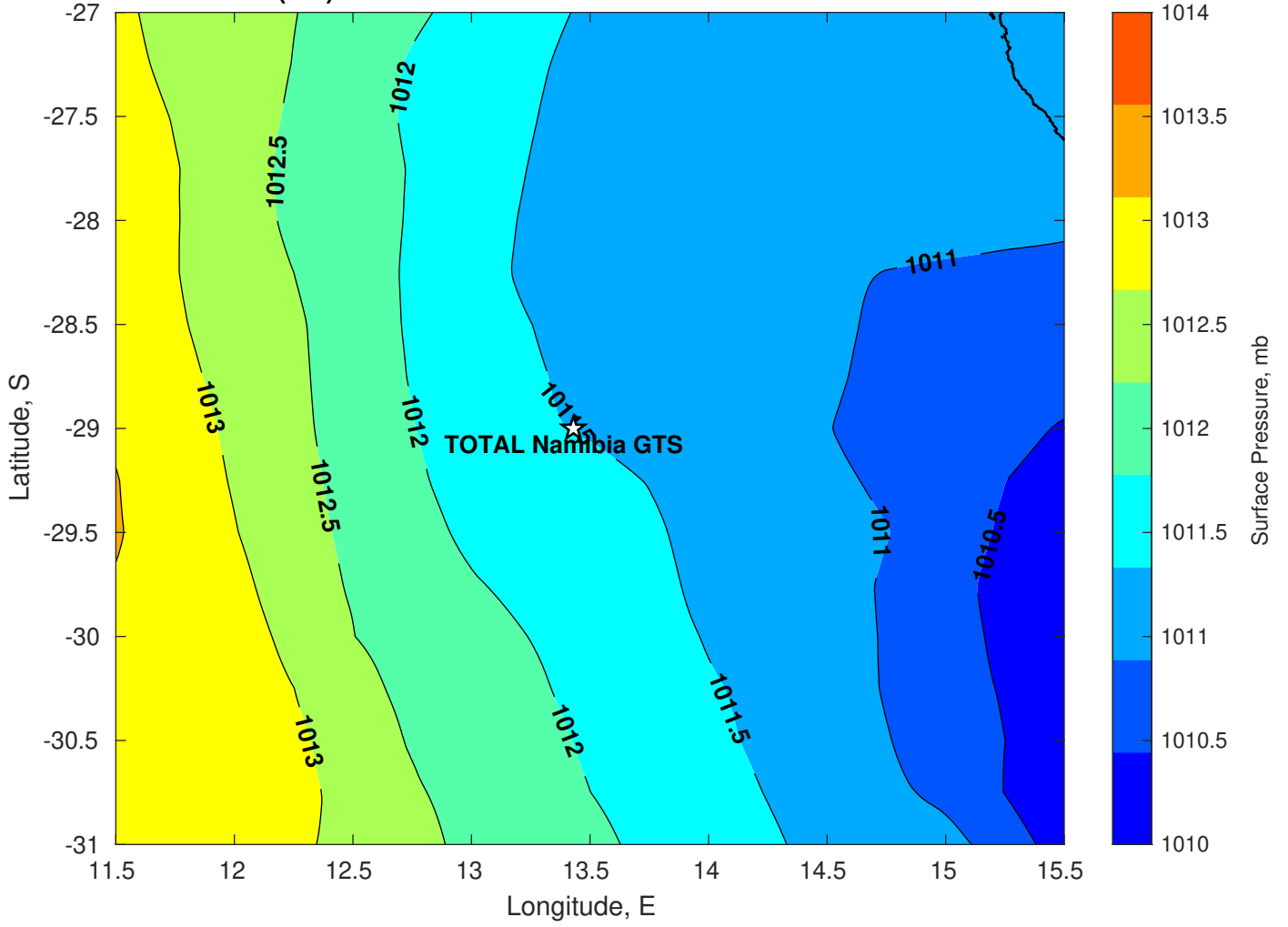


Surface Pressure (mb) for TOTAL Namibia GTS at 20-Feb-2025 00:00:00

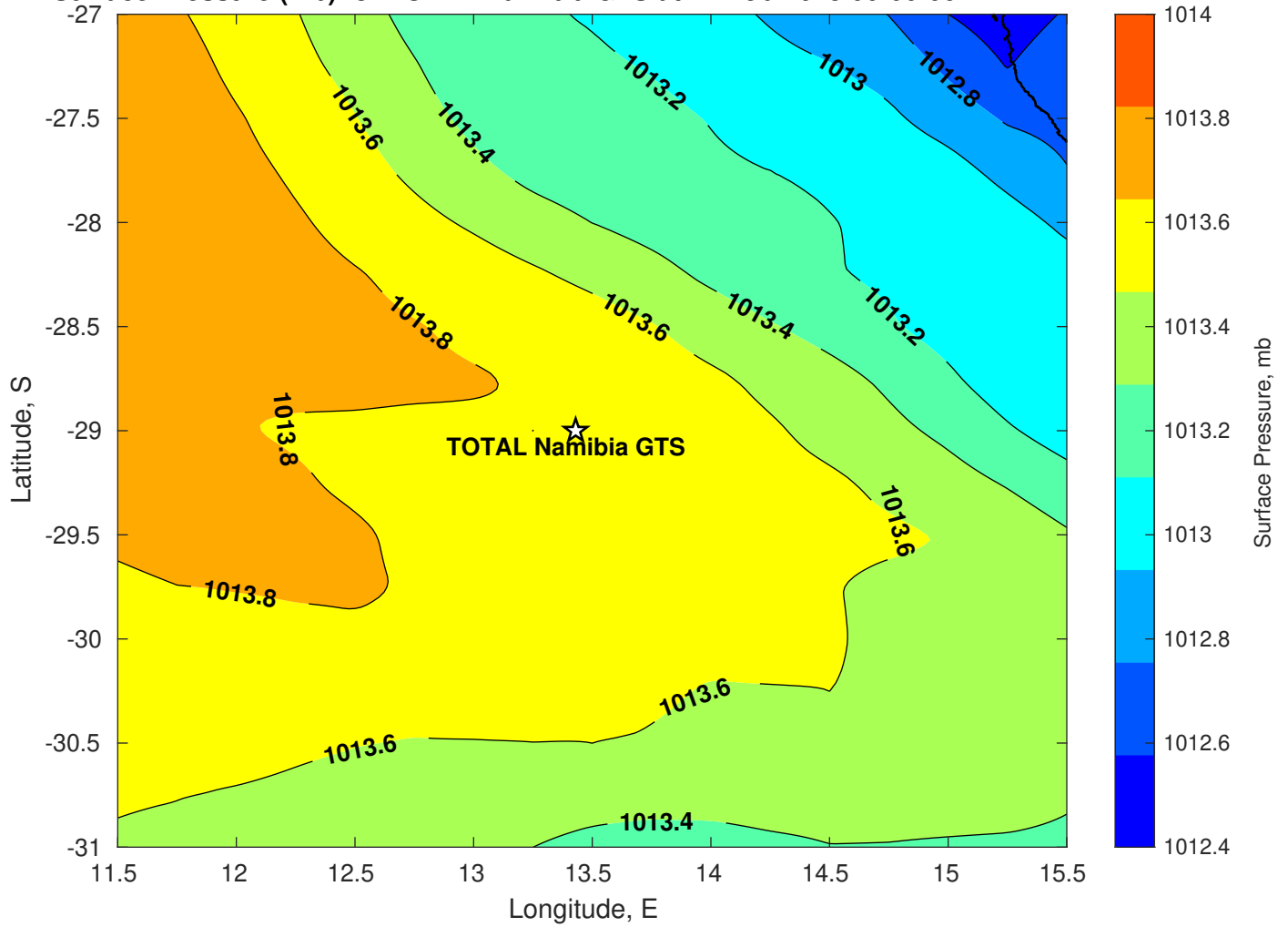




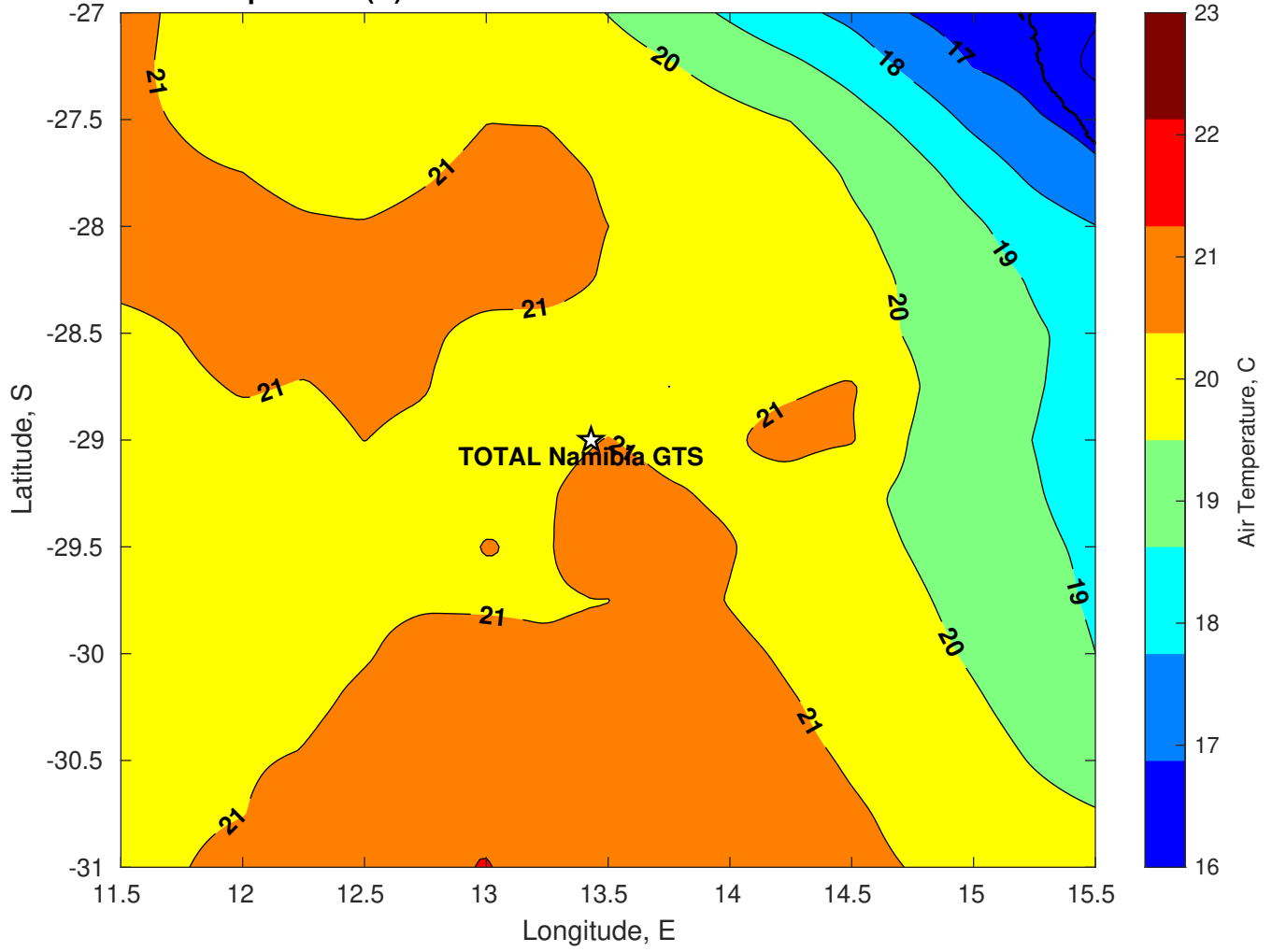
Surface Pressure (mb) for TOTAL Namibia GTS at 21-Feb-2025 00:00:00



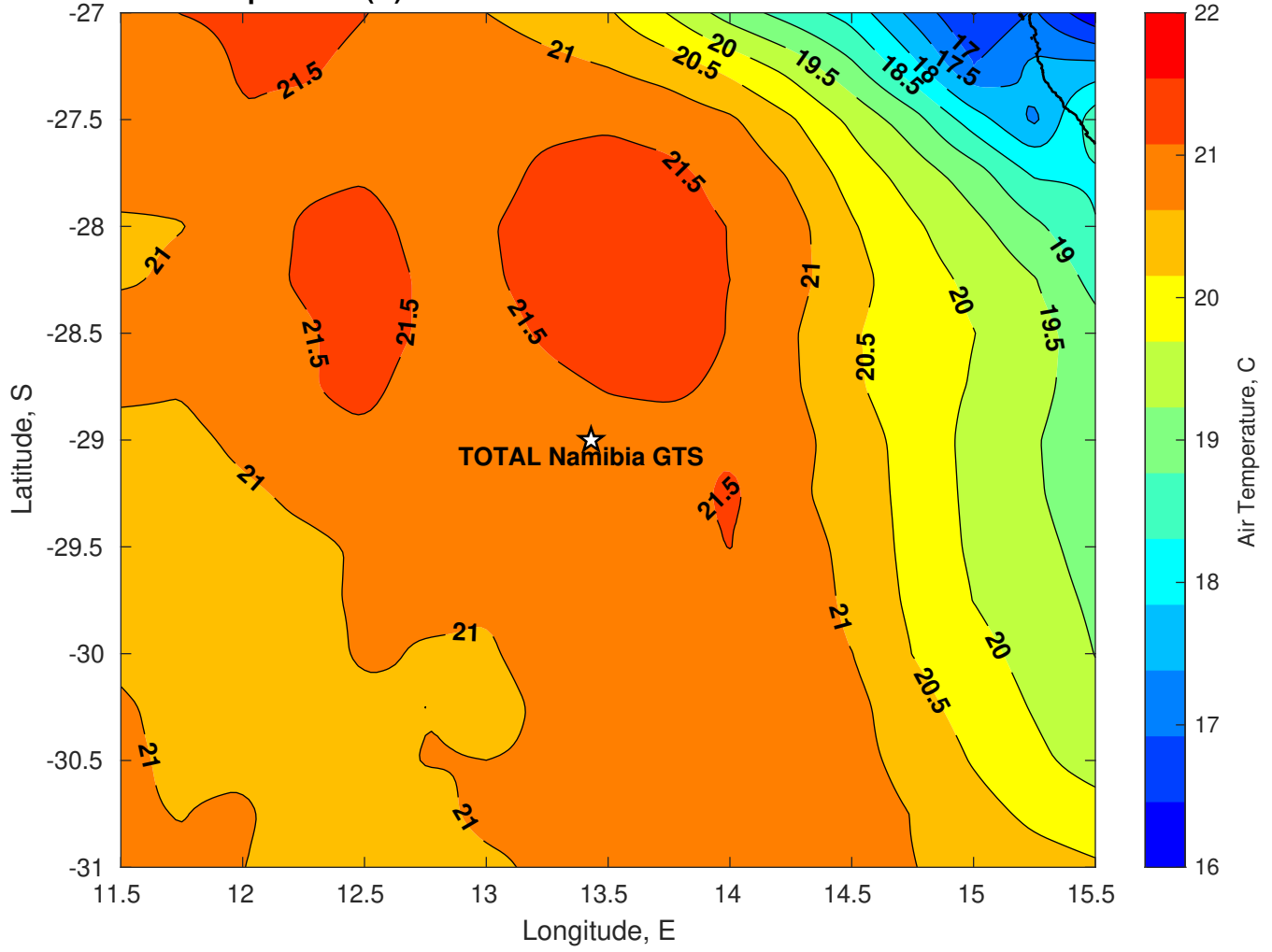
Surface Pressure (mb) for TOTAL Namibia GTS at 22-Feb-2025 00:00:00



Air Temperature (C) for TOTAL Namibia GTS at 20-Feb-2025



**Air Temperature (C) for TOTAL Namibia GTS at 20-Feb-2025**



**Air Temperature (C) for TOTAL Namibia GTS at 20-Feb-2025**

