
Marine Weather Forecast for CSA (ONHYM) PPL EBS - Western Sahara
Forecast valid as of 21-Feb-2025 0900 GMT

All times are local.

Today

Winds: NE, 15-20 kts.
Waves: NW, 8-9 feet, 19-20 sec.
No currents available.

Tonight

Winds: NE, 20-25 kts.
Waves: NW, 9-10 feet, 17-18 sec.
No currents available.

Saturday

Winds: NE, 15-20 kts.
Waves: NW, 9-10 feet, 16-17 sec.
No currents available.

Saturday Night

Winds: NE, 15-20 kts.
Waves: NW, 8-9 feet, 15-16 sec.
No currents available.

Sunday

Winds: NE, 15-20 kts.
Waves: NW, 7-8 feet, 14-15 sec.
No currents available.

Sunday Night

Winds: NE, 20-25 kts.
Waves: NW, 7-8 feet, 13-14 sec.
No currents available.

Monday

Winds: NE, 20-25 kts.
Waves: NW, 6-7 feet, 13-14 sec.
No currents available.

Monday Night

Winds: NE, 20-25 kts.
Waves: NW, 7-8 feet, 20-21 sec.
No currents available.

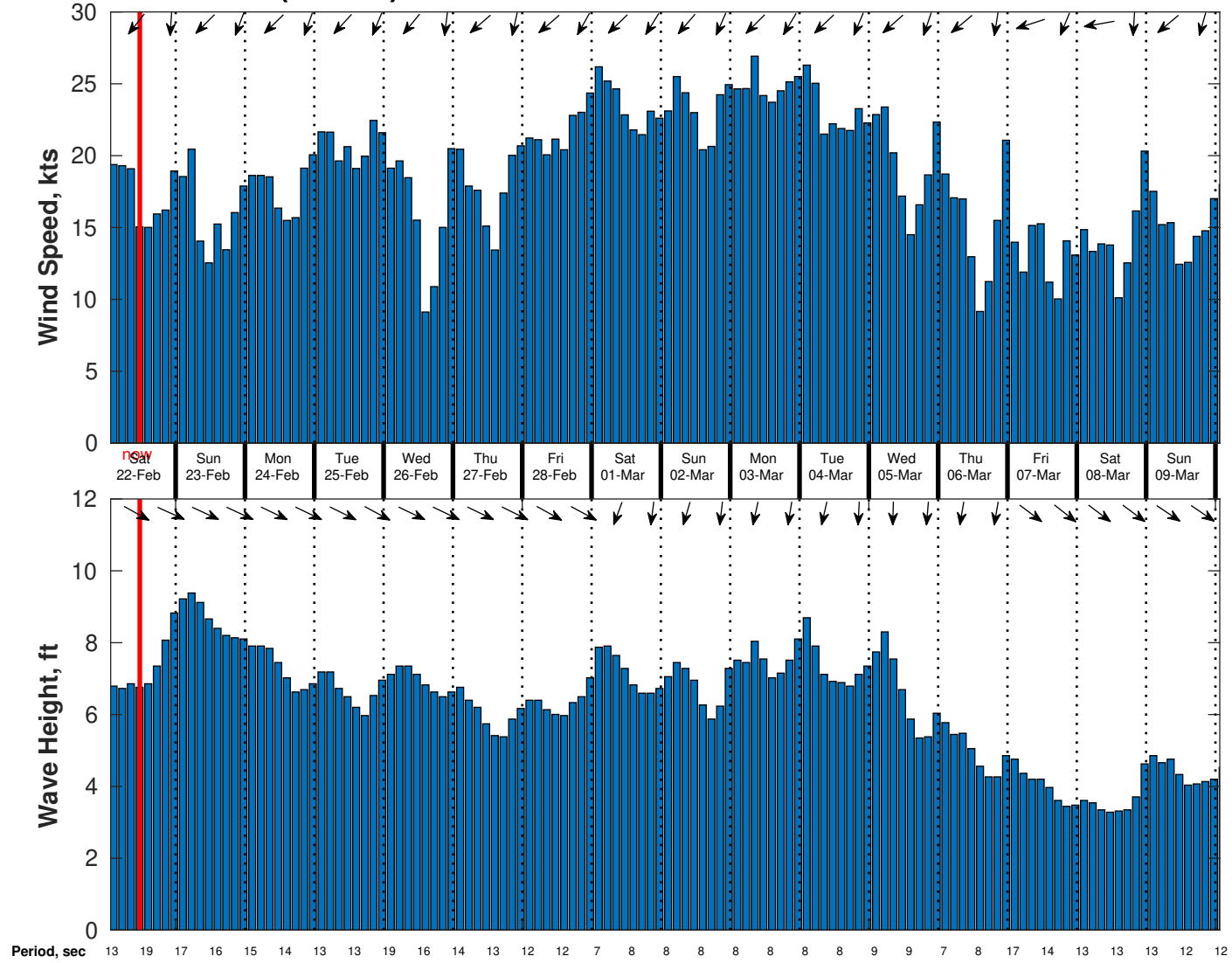
Tuesday

Winds: NE, 15-20 kts.
Waves: NW, 7-8 feet, 16-17 sec.
No currents available.

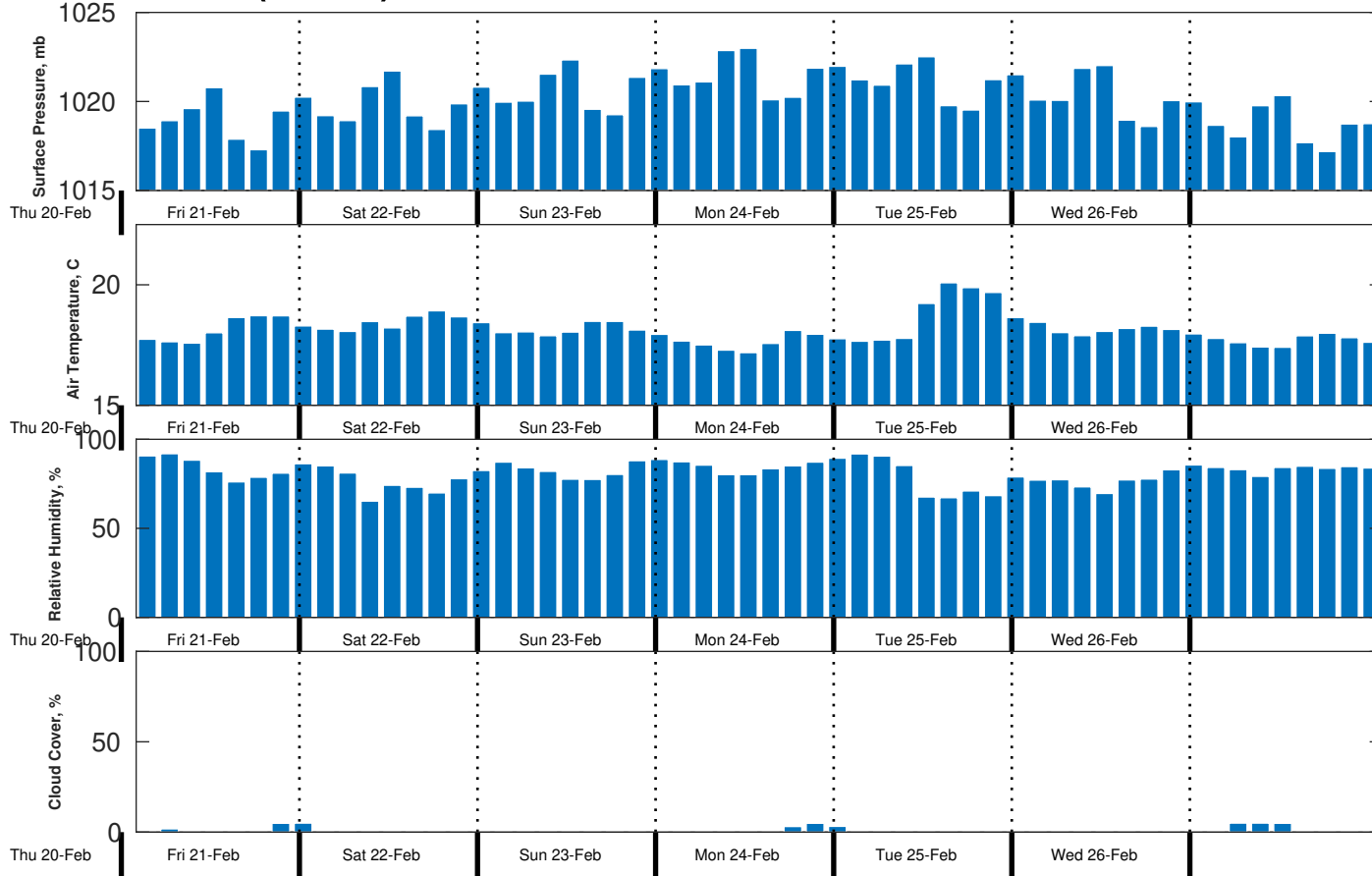
Tuesday Night

Winds: NE, 20-25 kts.
Waves: NW, 6-7 feet, 14-15 sec.
No currents available.

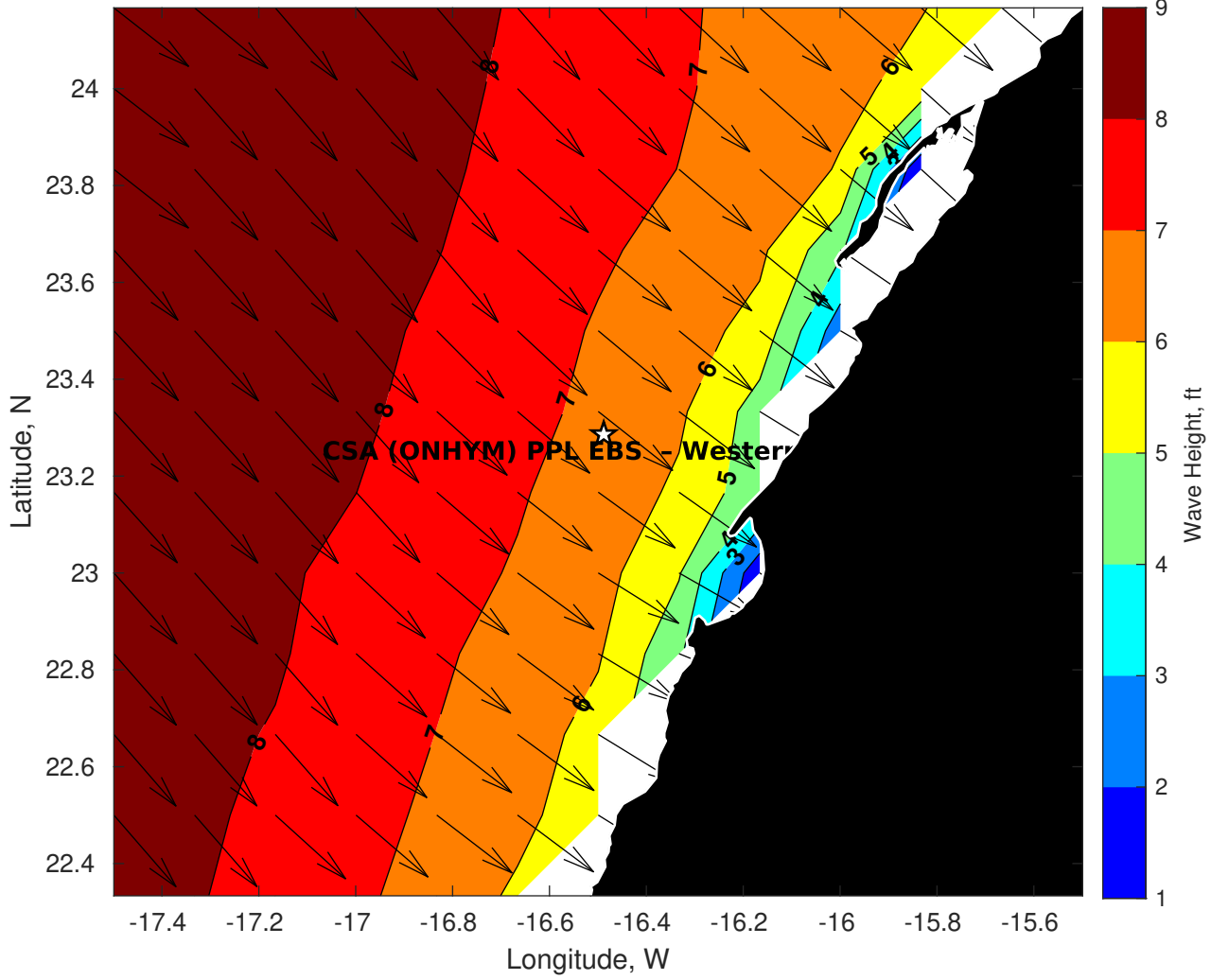
Wind & Wave Forecast for CSA (ONHYM) PPL EBS - Western Sahara from 21-Feb-2025 01:00:00 to 09-Mar-2025 01:00:00



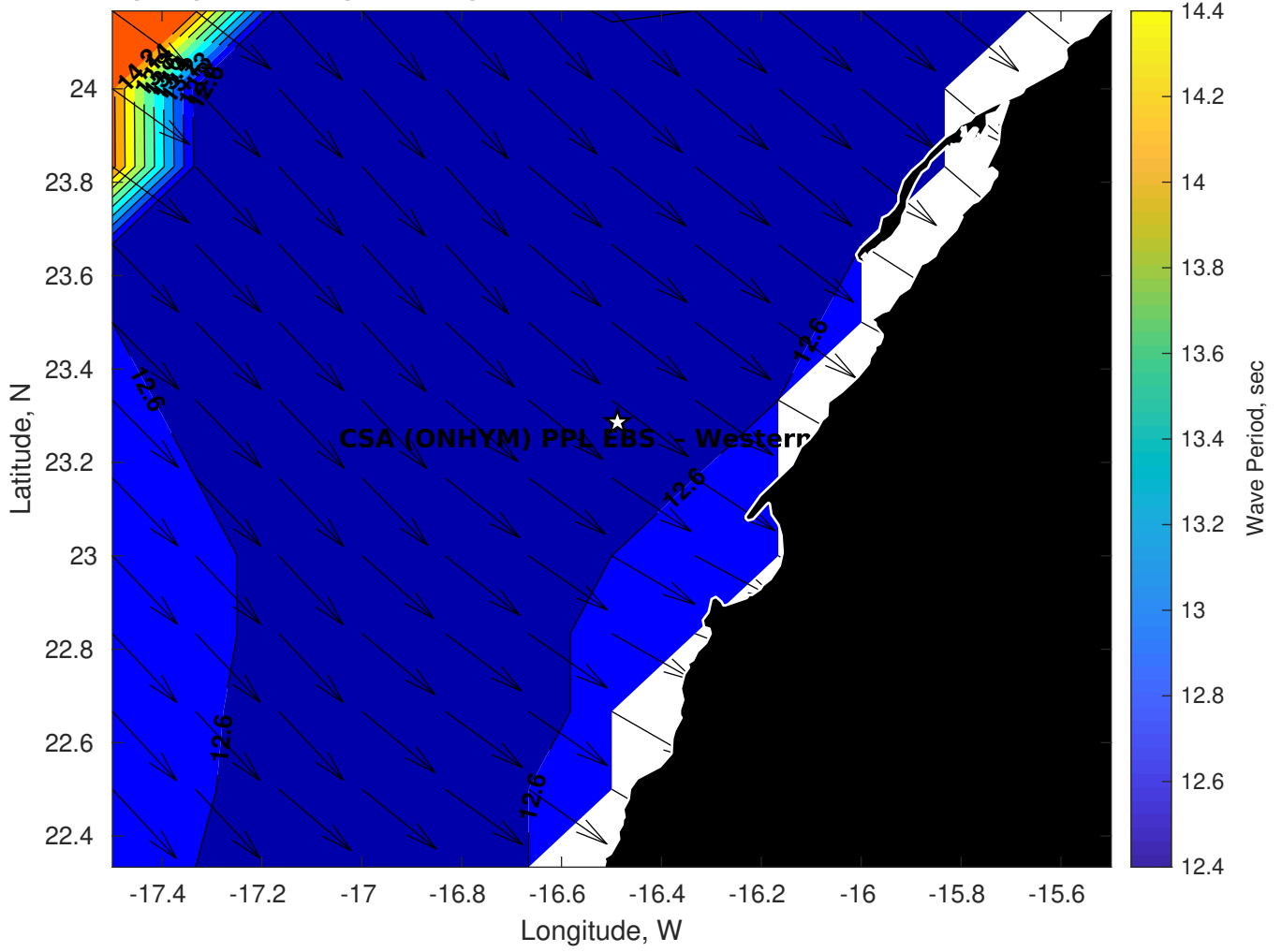
Met Forecast for CSA (ONHYM) PPL EBS - Western Sahara from 21-Feb-2025 00:00:00 to 28-Feb-2025 00:00:00



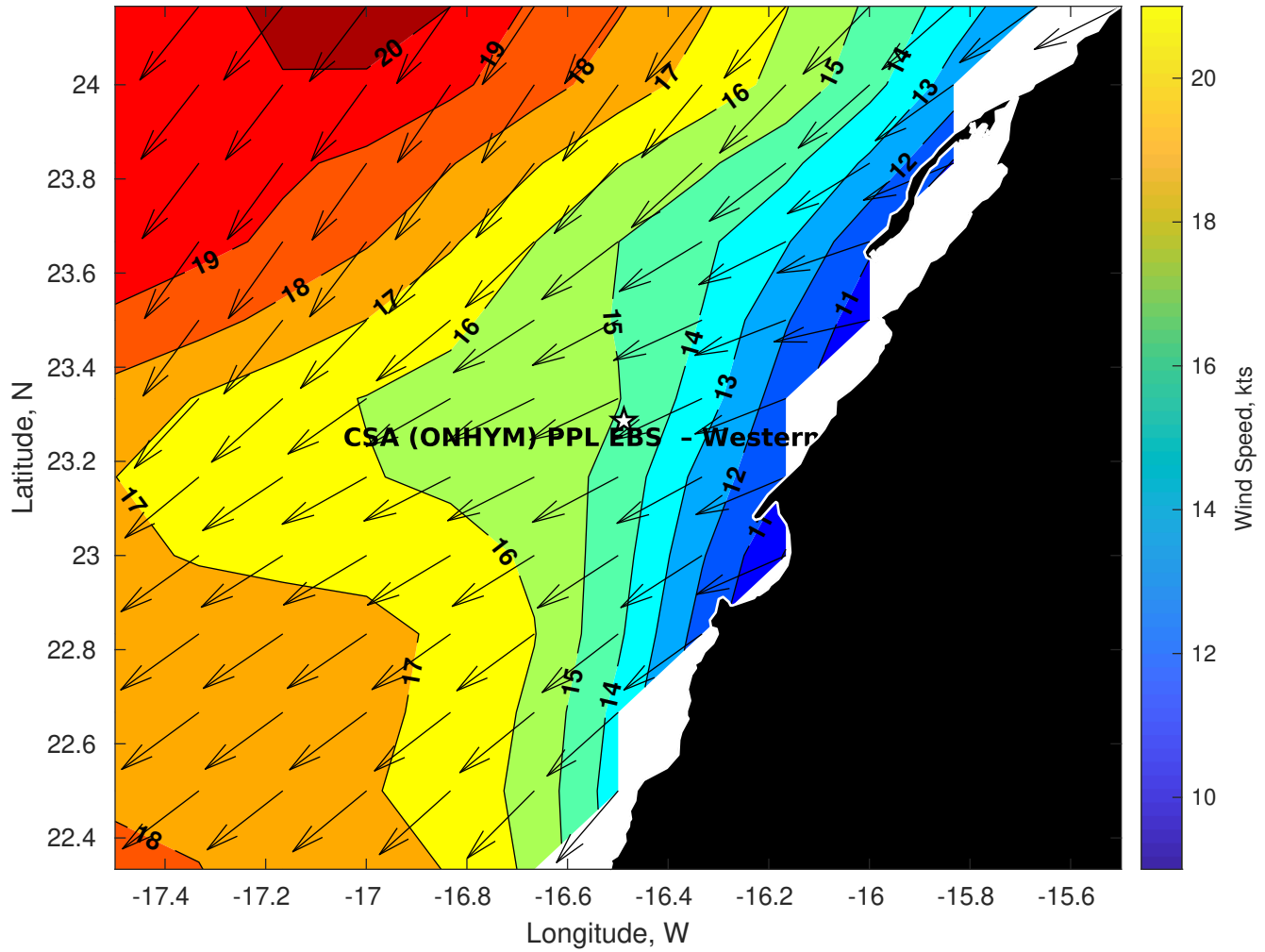
Wave Height (ft) for CSA (ONHYM) PPL EBS - Western Sahara at 21-Feb-2025 09:00:00



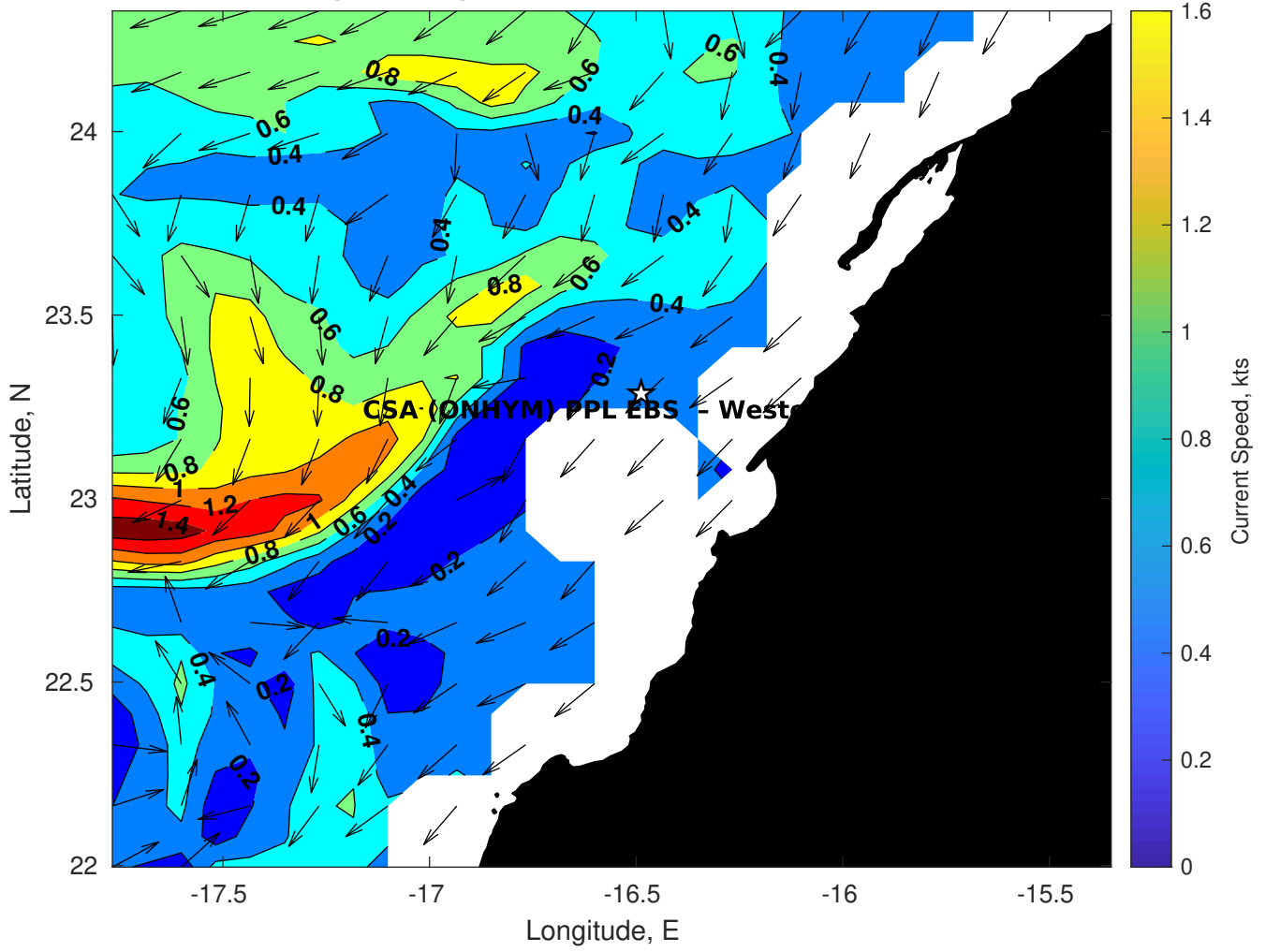
Wave Period (sec) for CSA (ONHYM) PPL EBS - Western Sahara at 21-Feb-2025 09:00:00



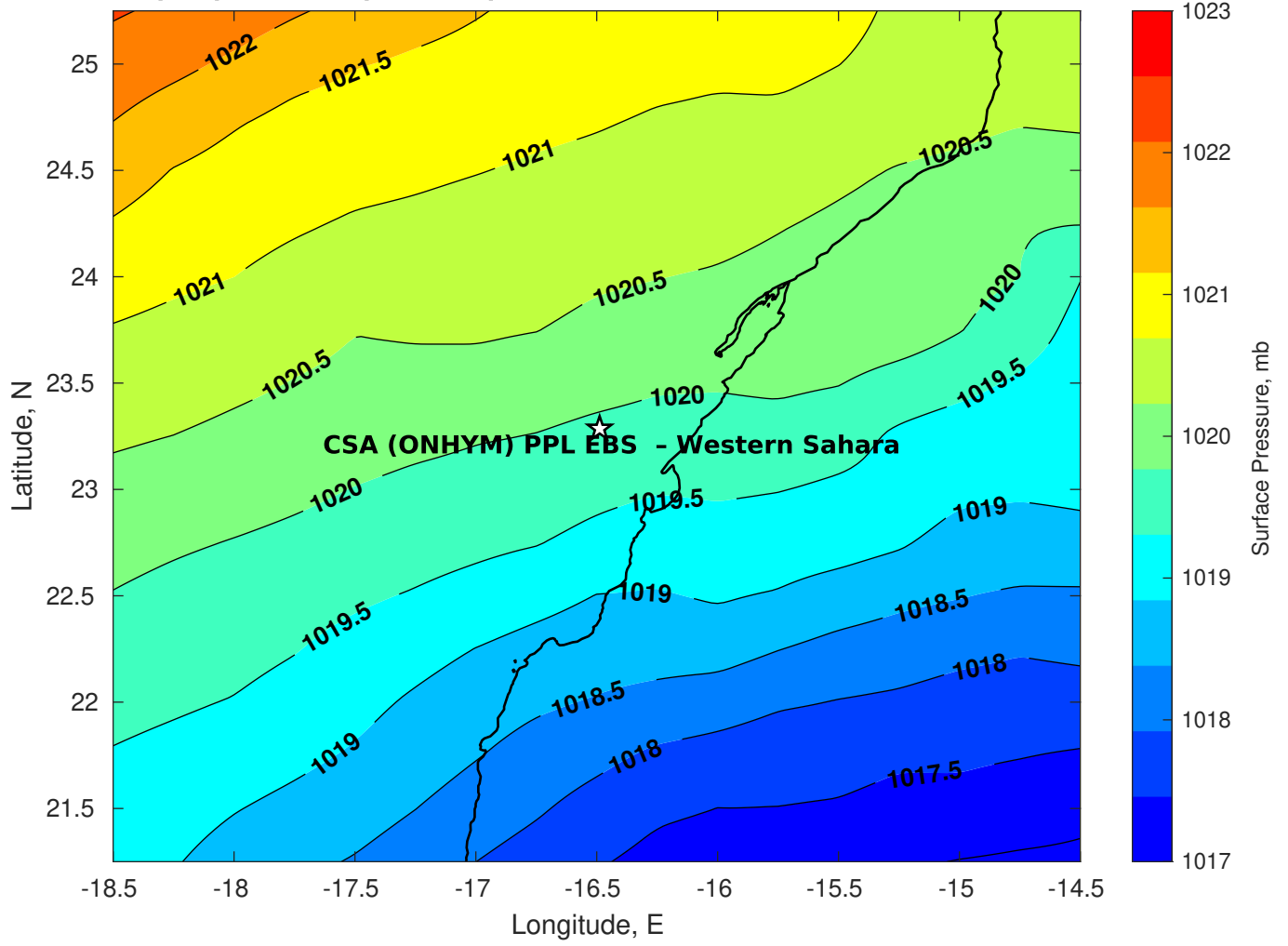
Winds (kts) for CSA (ONHYM) PPL EBS - Western Sahara at 21-Feb-2025 09:00:00



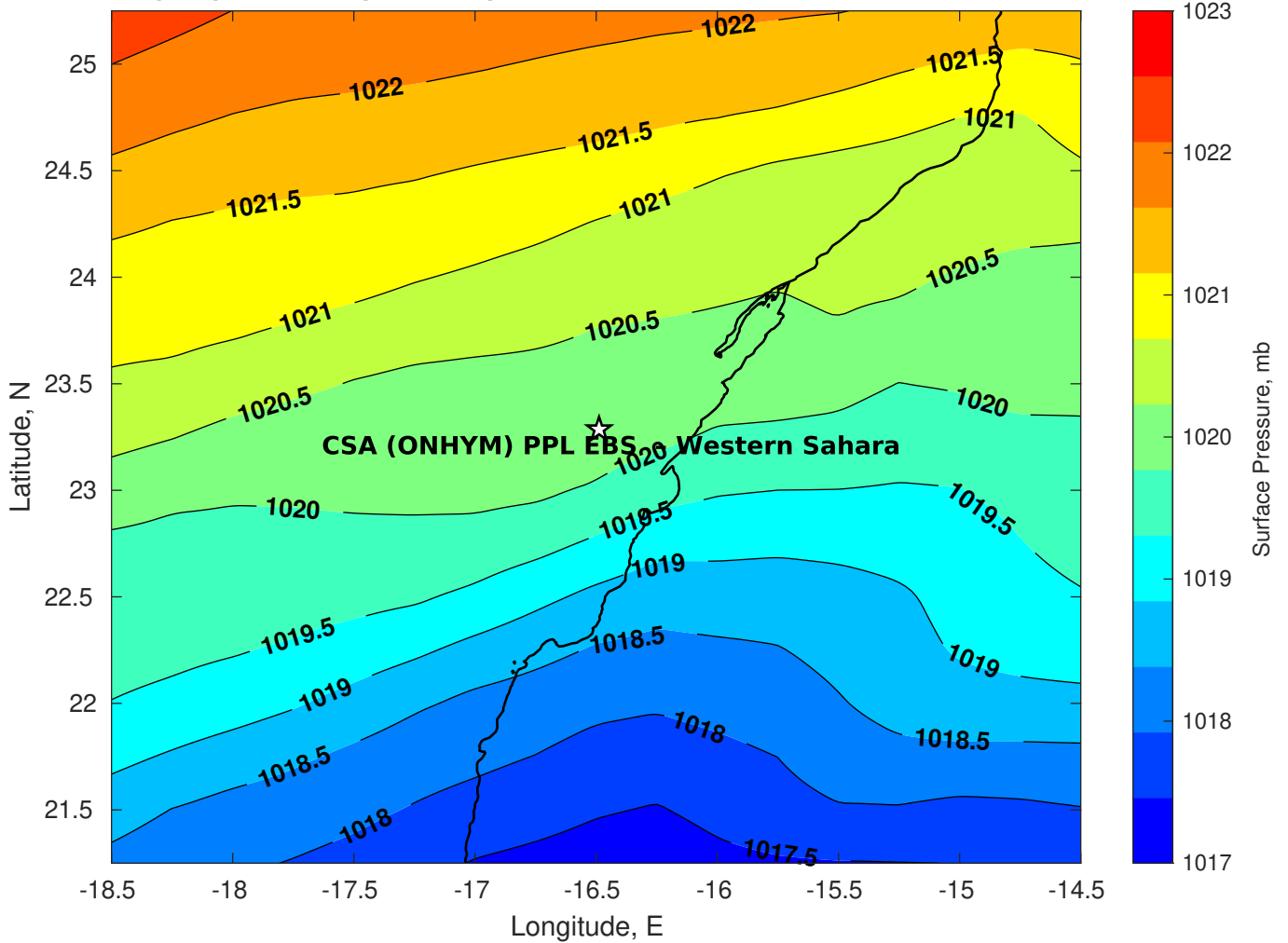
Surface Currents for CSA (ONHYM) PPL EBS - Western Sahara at 19-Feb-2025 00:00:00



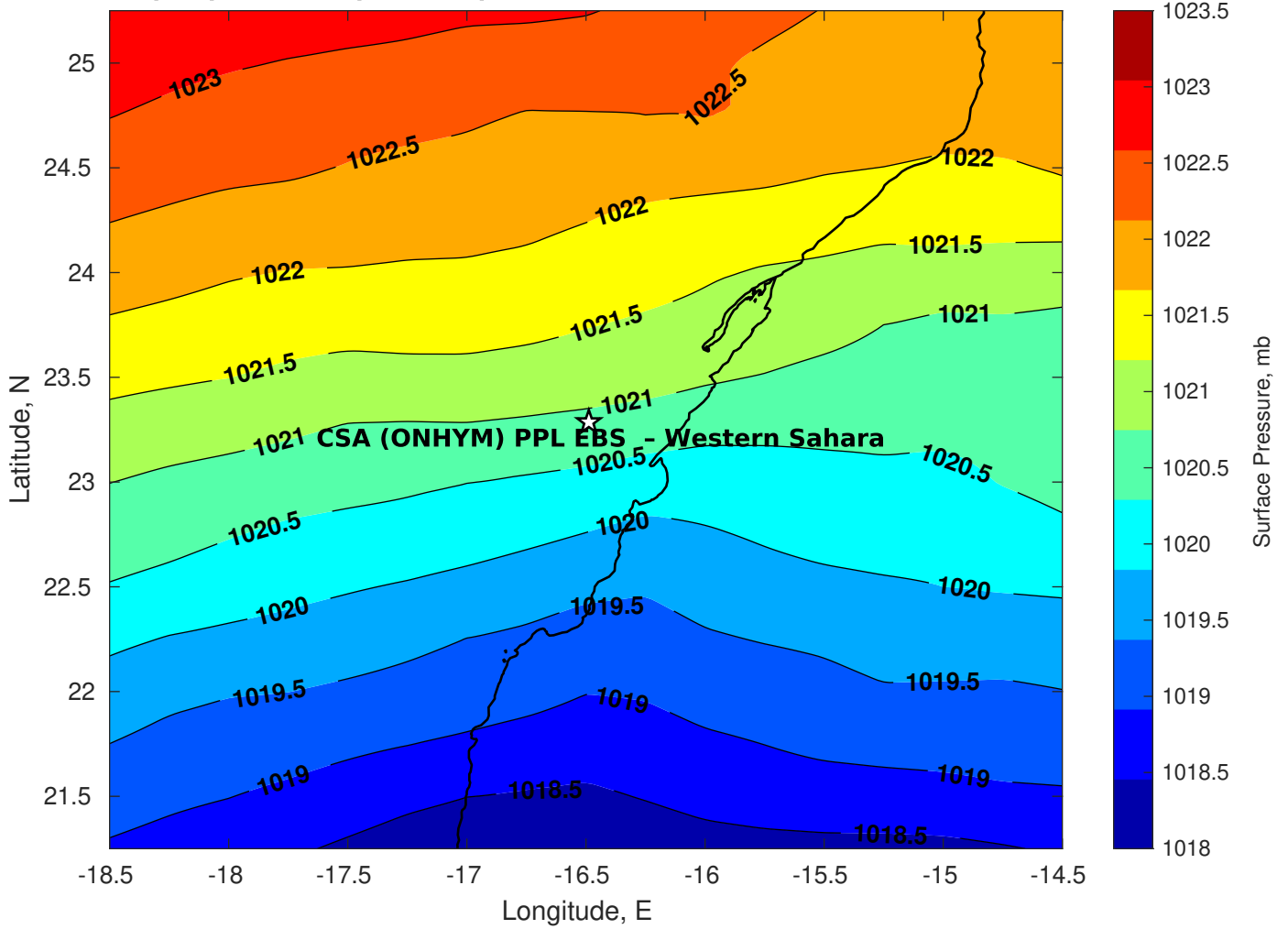
Surface Pressure (mb) for CSA (ONHYM) PPL EBS - Western Sahara at 21-Feb-2025 00:00:00



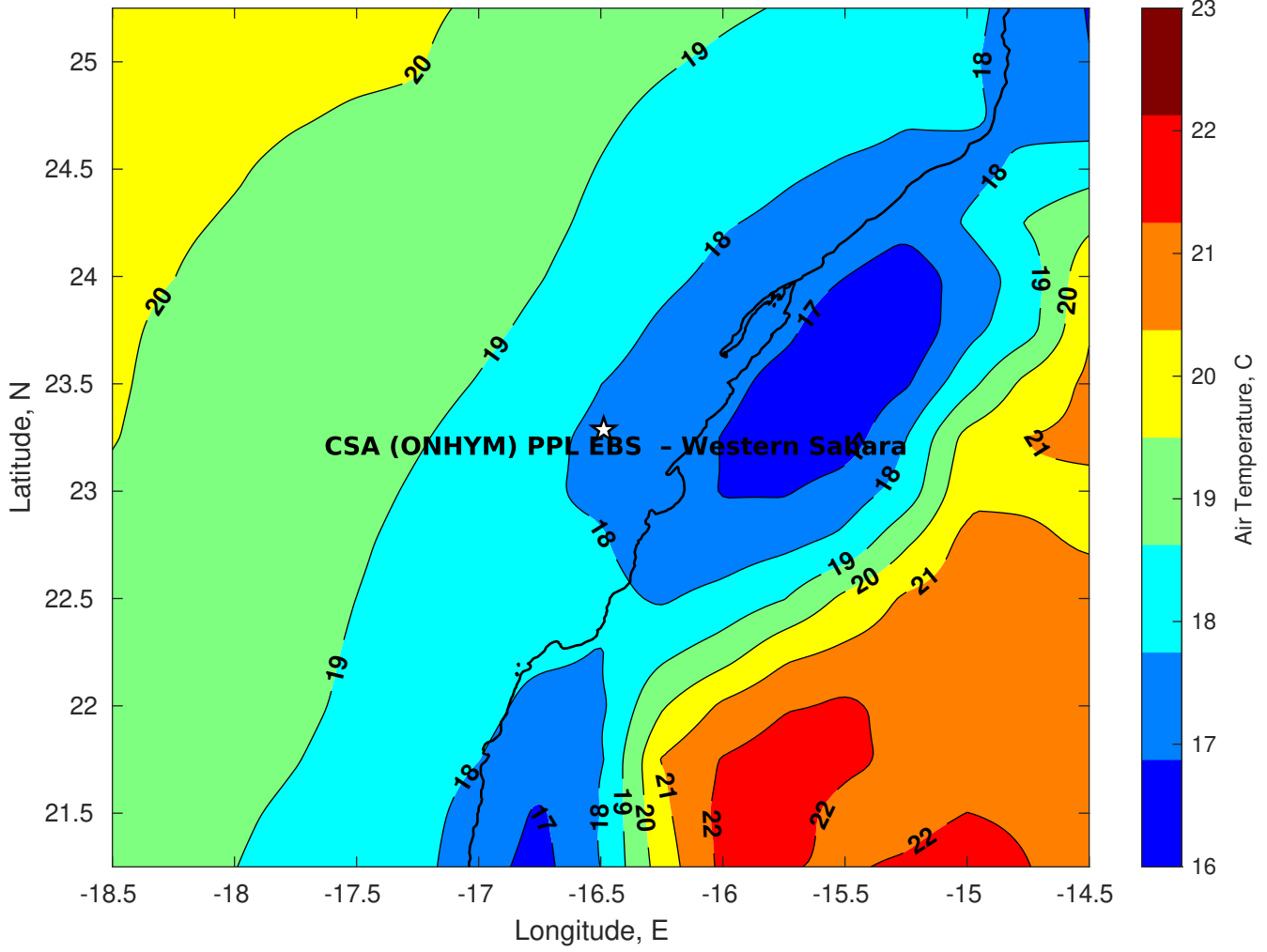
Surface Pressure (mb) for CSA (ONHYM) PPL EBS - Western Sahara at 22-Feb-2025 00:00:00



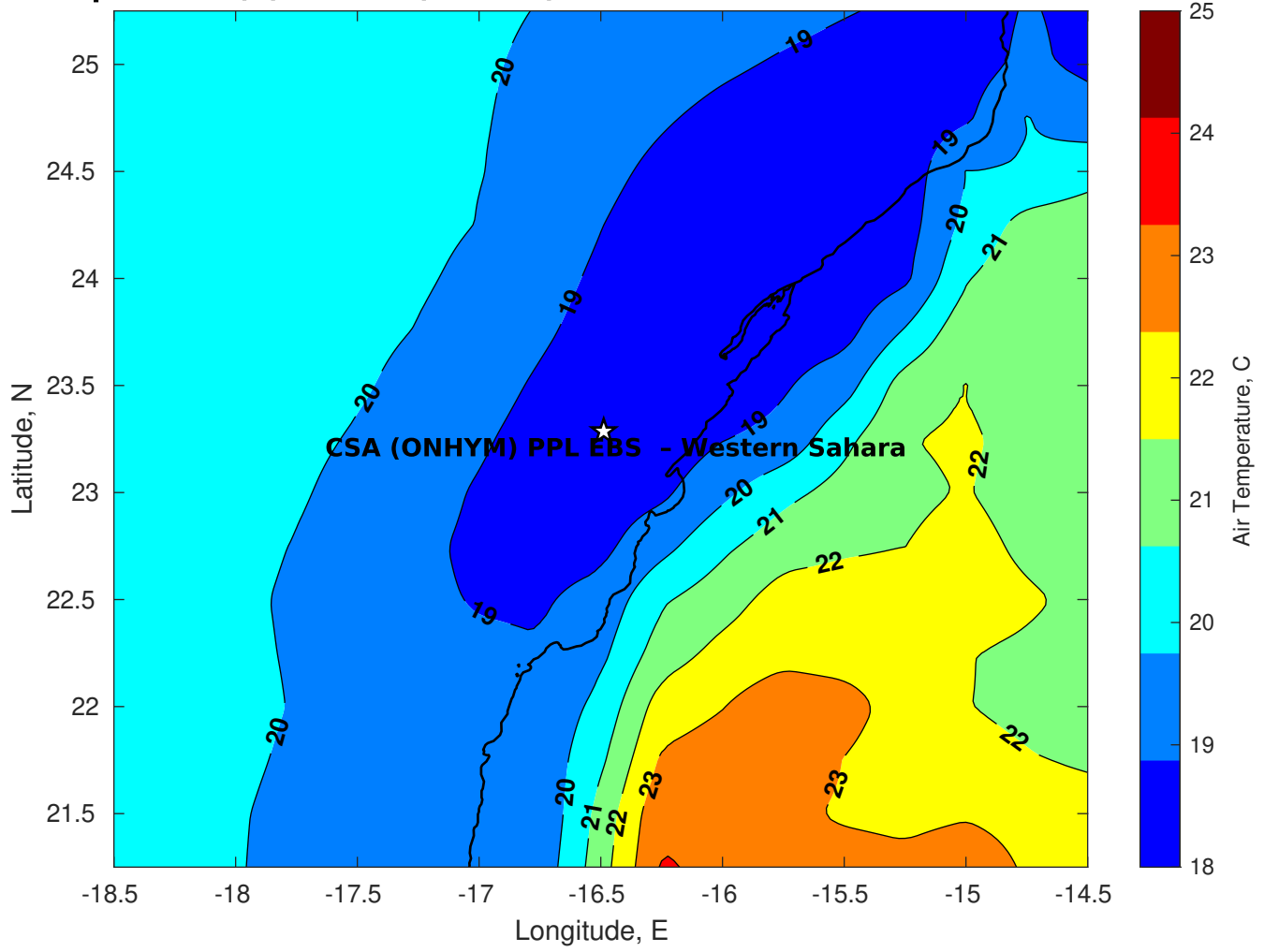
Surface Pressure (mb) for CSA (ONHYM) PPL EBS - Western Sahara at 23-Feb-2025 00:00:00



Air Temperature (C) for CSA (ONHYM) PPL EBS - Western Sahara at 21-Feb-2025



Air Temperature (C) for CSA (ONHYM) PPL EBS - Western Sahara at 21-Feb-2025



Air Temperature (C) for CSA (ONHYM) PPL EBS - Western Sahara at 21-Feb-2025

