
Marine Weather Forecast for CSL Shell Nigeria

Forecast valid as of 21-Feb-2025 0900 GMT

All times are local.

Today

Winds: NW, 10-15 kts.

Waves: N, 3-4 feet, 13-14 sec.

No currents available.

Tonight

Winds: NW, 10-15 kts.

Waves: N, 3-4 feet, 12-13 sec.

No currents available.

Saturday

Winds: NW, 10-15 kts.

Waves: N, 3-4 feet, 12-13 sec.

No currents available.

Saturday Night

Winds: NW, 10-15 kts.

Waves: N, 2-3 feet, 12-13 sec.

No currents available.

Sunday

Winds: NW, 10-15 kts.

Waves: N, 2-3 feet, 11-12 sec.

No currents available.

Sunday Night

Winds: NW, 10-15 kts.

Waves: N, 2-3 feet, 11-12 sec.

No currents available.

Monday

Winds: NW, 10-15 kts.

Waves: N, 2-3 feet, 11-12 sec.

No currents available.

Monday Night

Winds: NW, 10-15 kts.

Waves: N, 2-3 feet, 10-11 sec.

No currents available.

Tuesday

Winds: NW, 10-15 kts.

Waves: N, 2-3 feet, 13-14 sec.

No currents available.

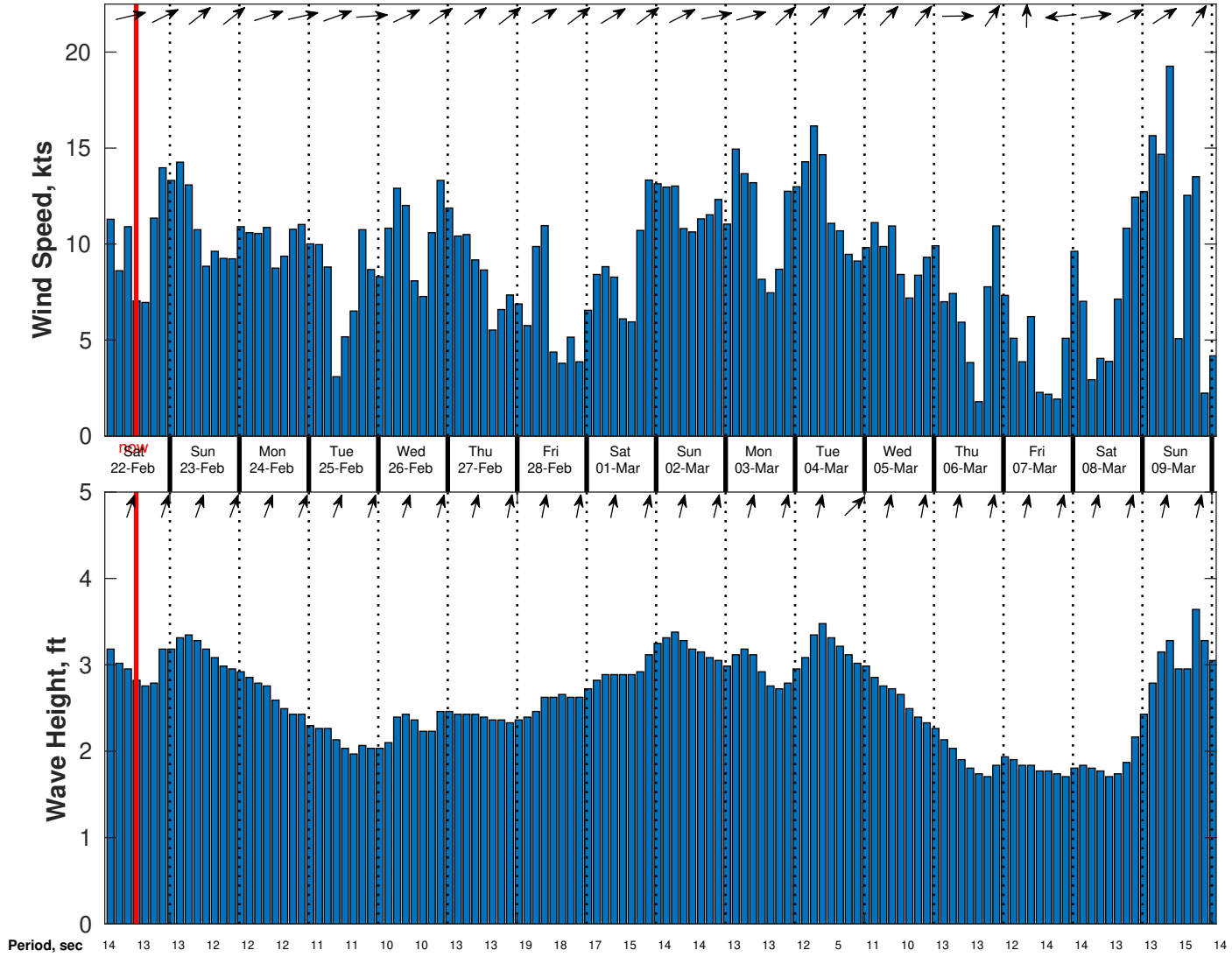
Tuesday Night

Winds: NW, 10-15 kts.

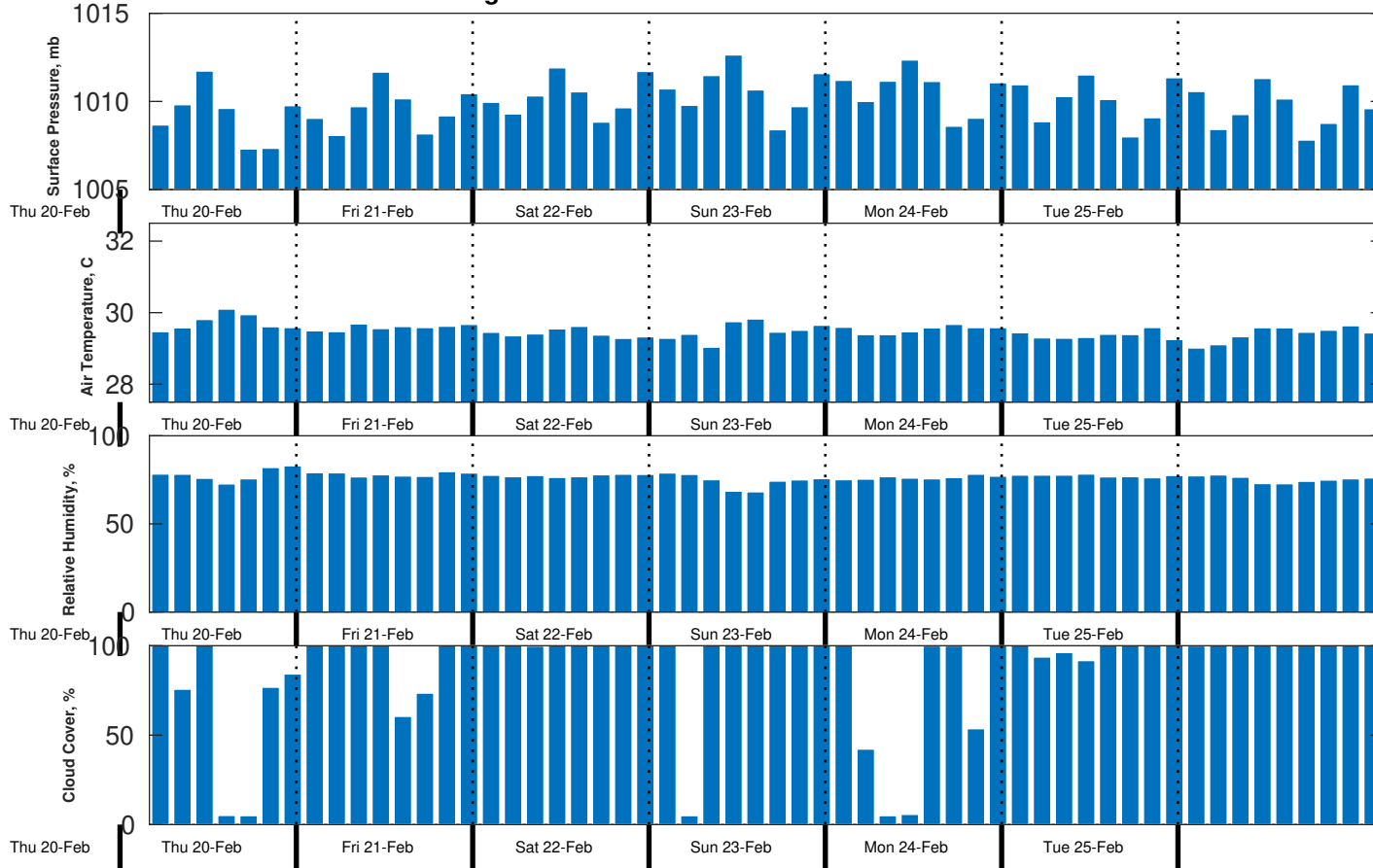
Waves: N, 2-3 feet, 13-14 sec.

No currents available.

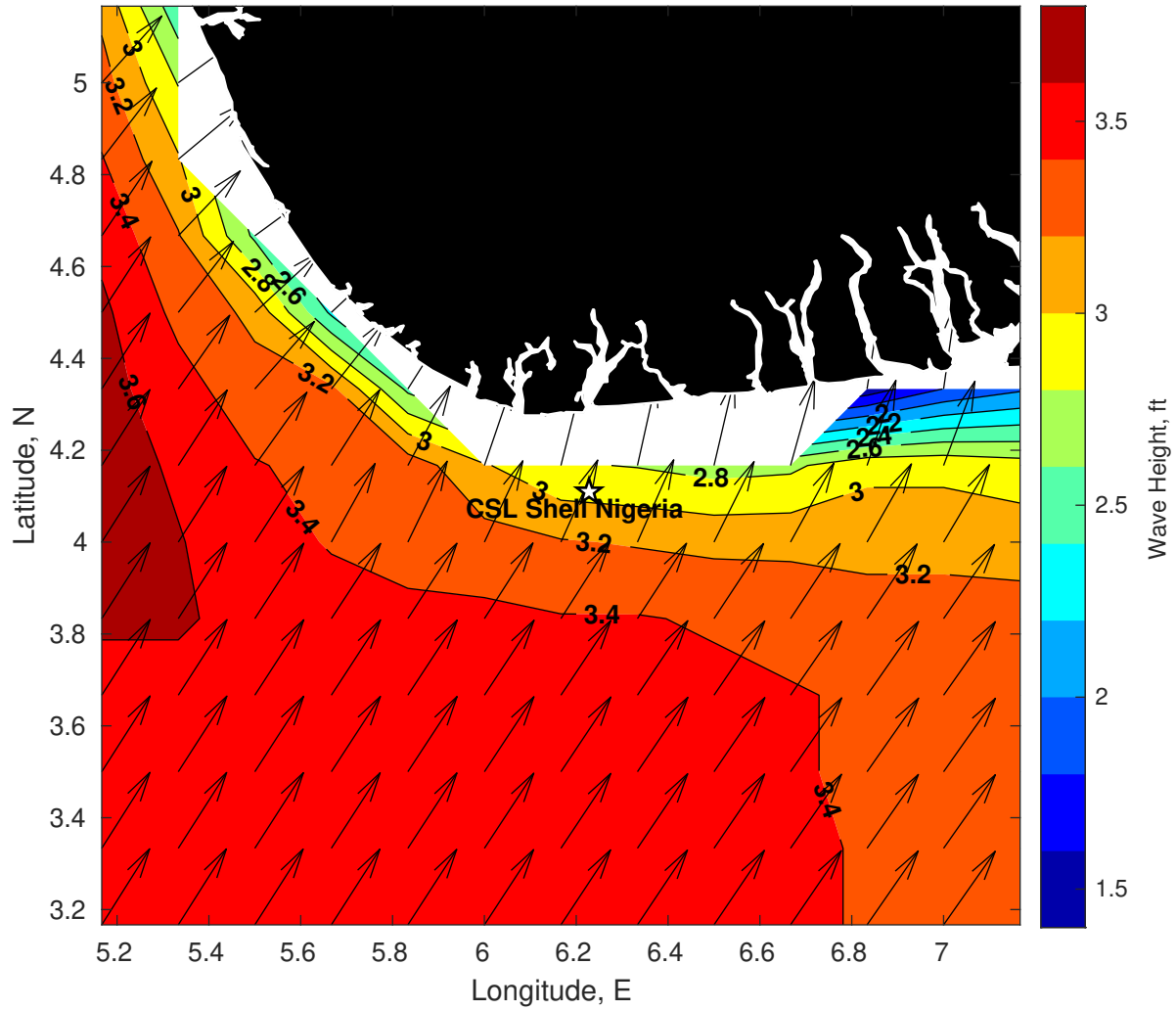
Wind & Wave Forecast for CSL Shell Nigeria from 21-Feb-2025 02:00:00 to 09-Mar-2025 02:00:00



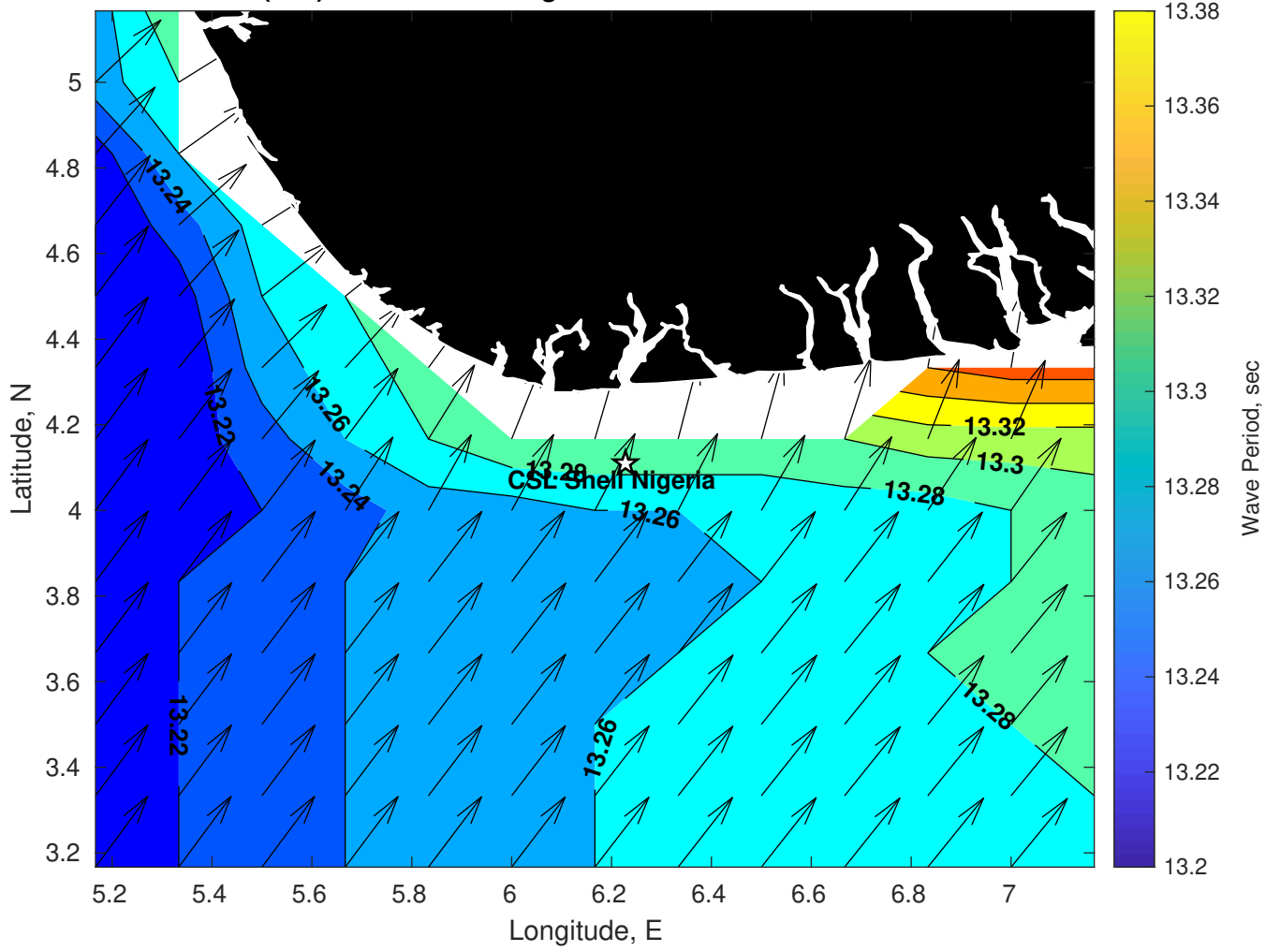
Met Forecast for CSL Shell Nigeria from 21-Feb-2025 00:00:00 to 28-Feb-2025 00:00:00



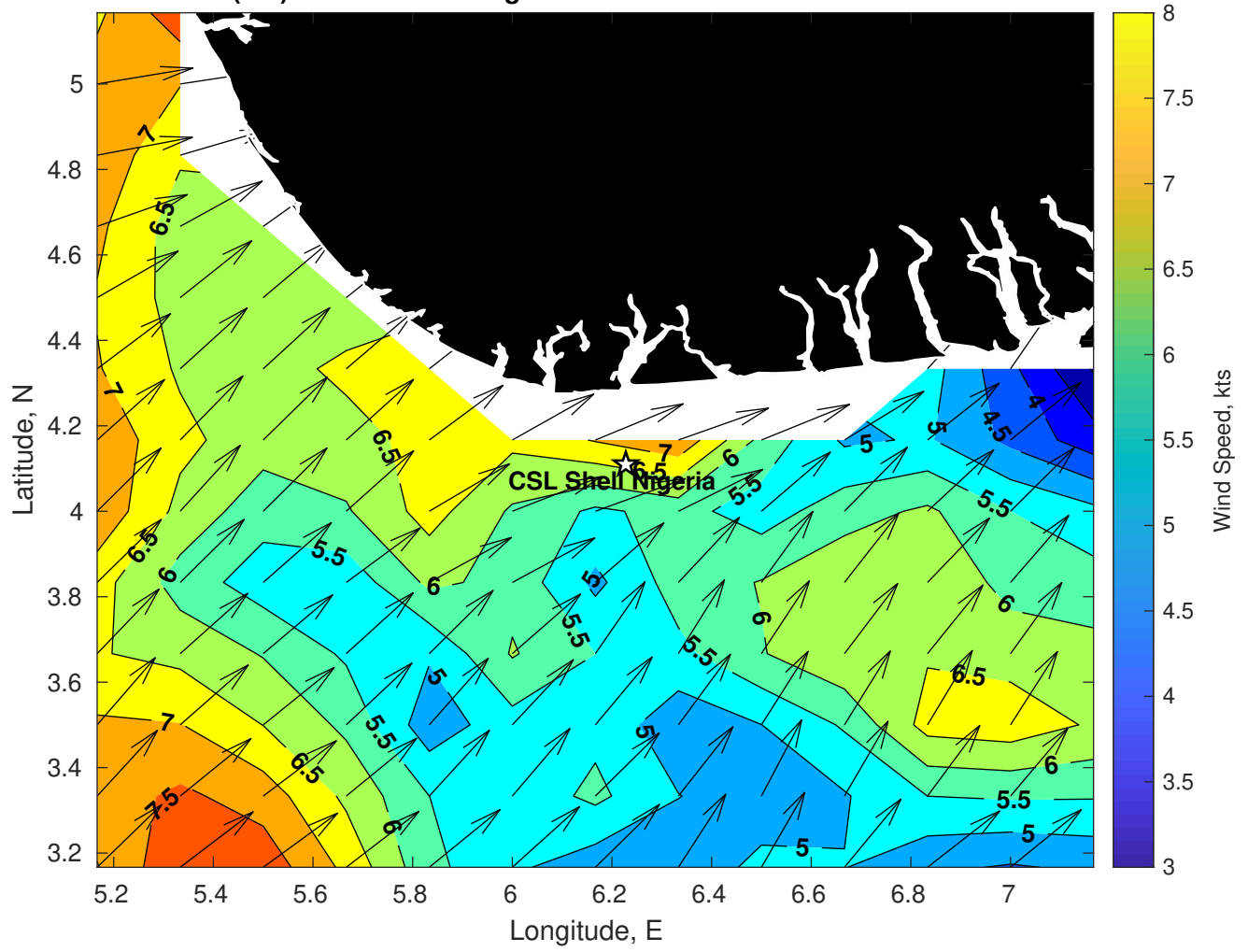
Wave Height (ft) for CSL Shell Nigeria at 21-Feb-2025 09:00:00



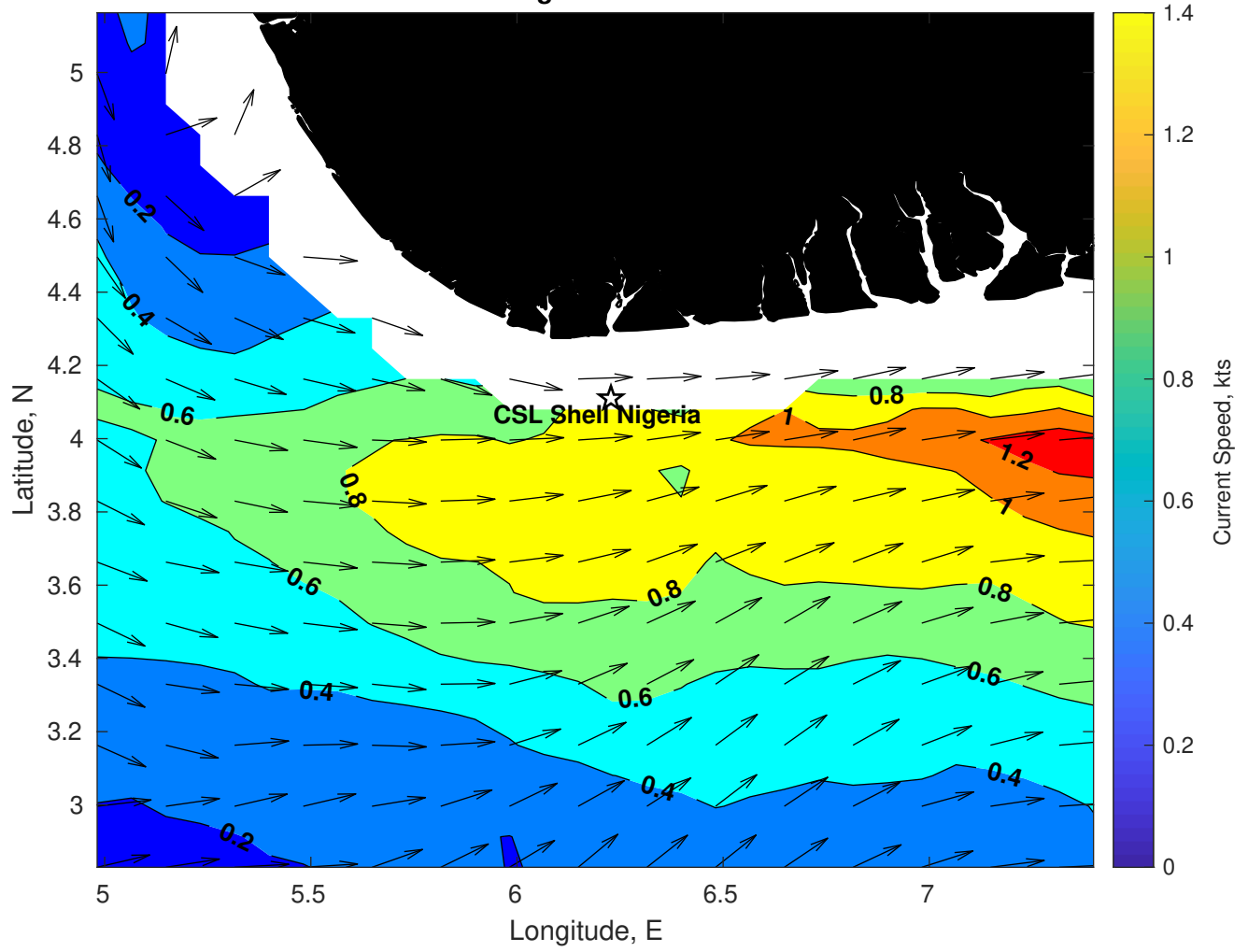
Wave Period (sec) for CSL Shell Nigeria at 21-Feb-2025 09:00:00



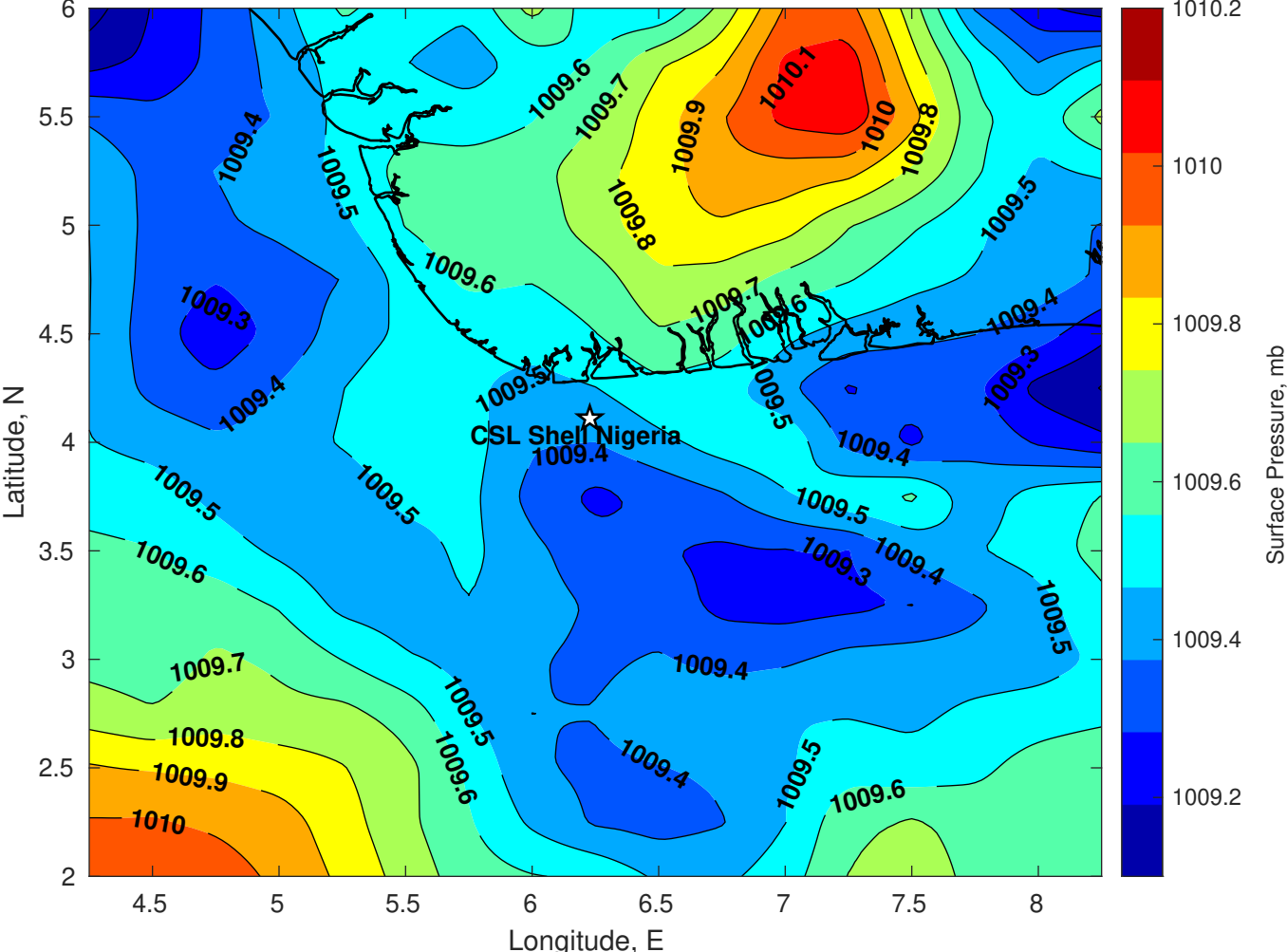
Winds (kts) for CSL Shell Nigeria at 21-Feb-2025 09:00:00



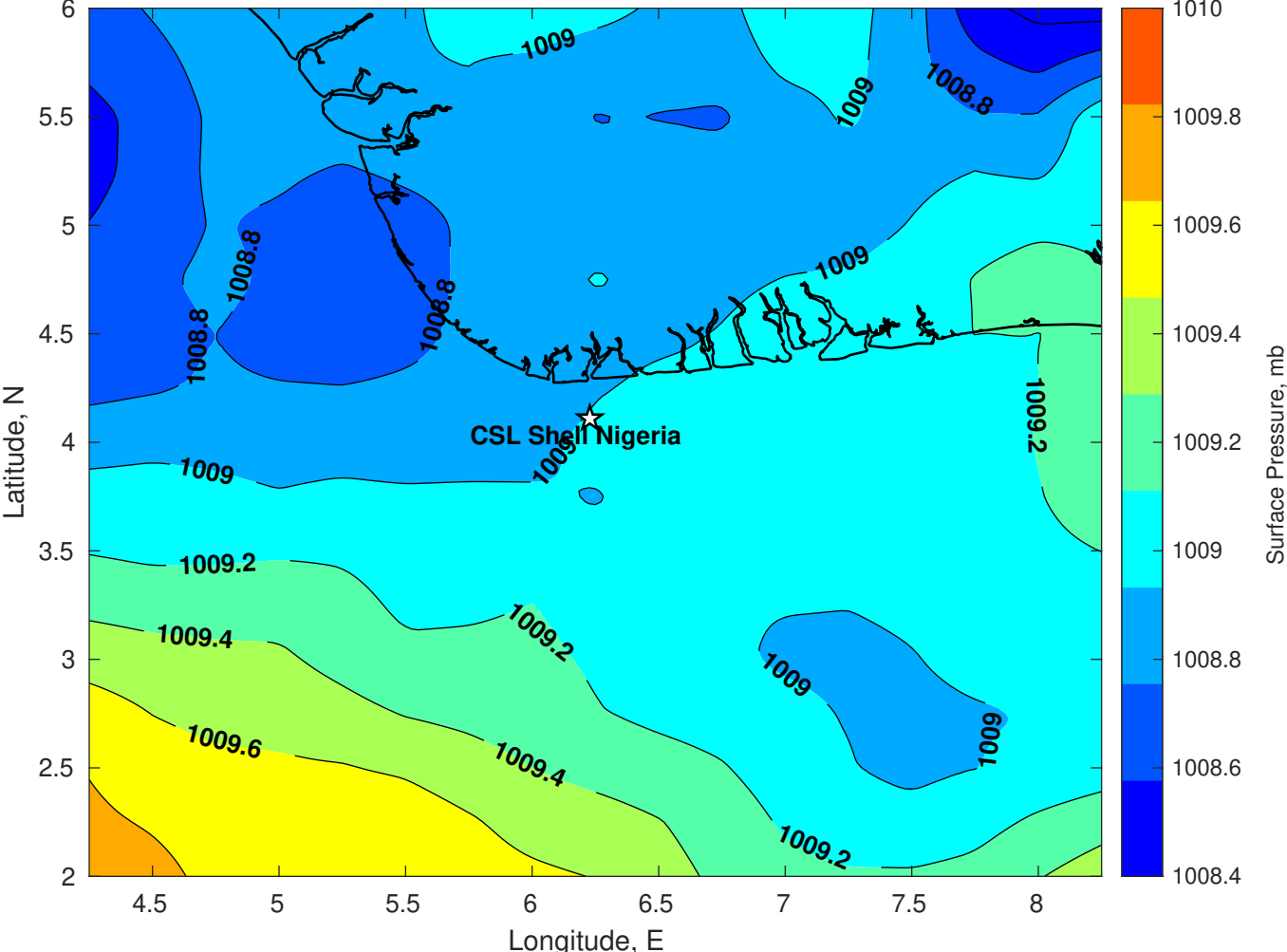
Surface Currents for CSL Shell Nigeria at 19-Feb-2025 00:00:00



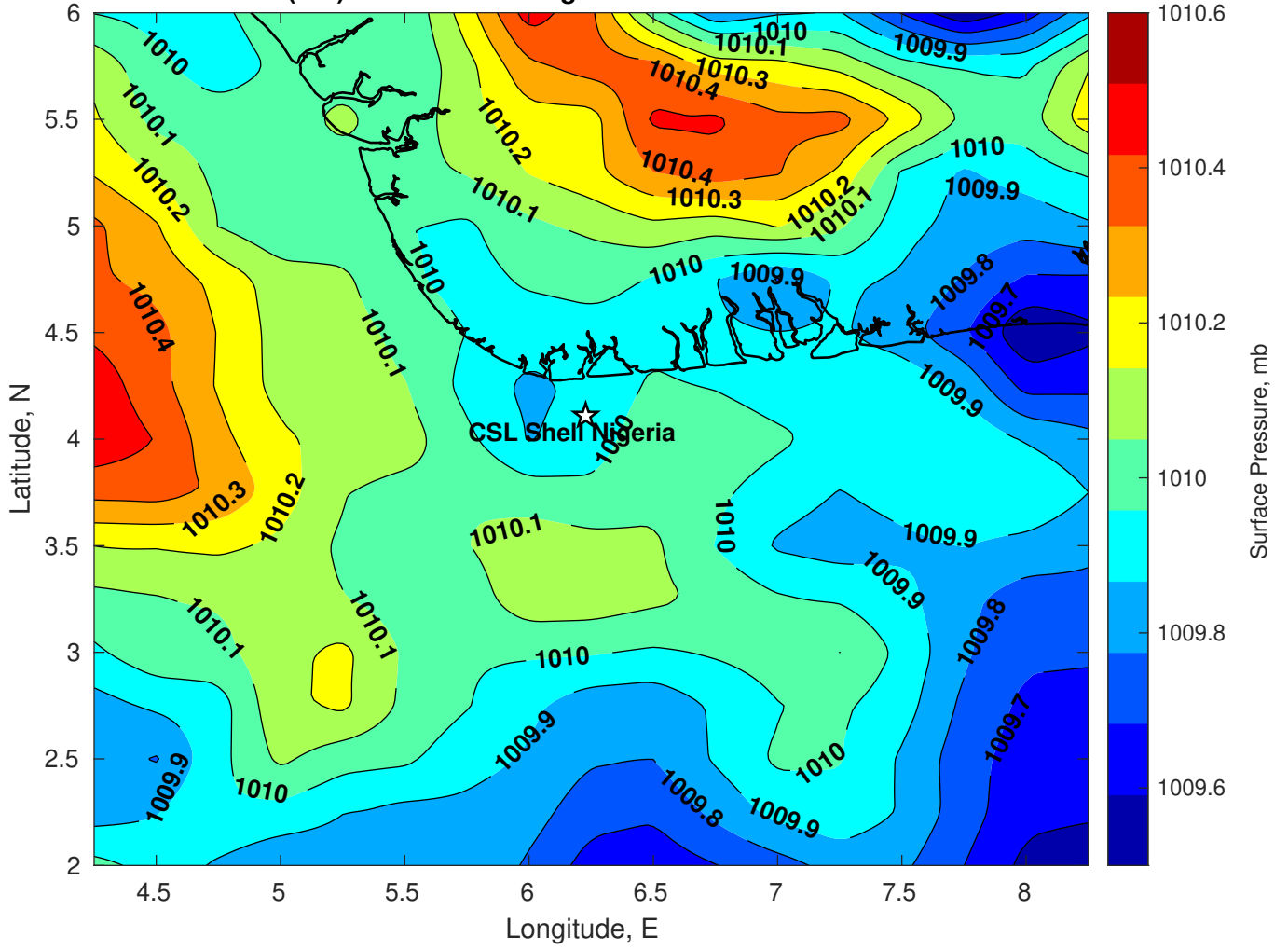
Surface Pressure (mb) for CSL Shell Nigeria at 21-Feb-2025 00:00:00



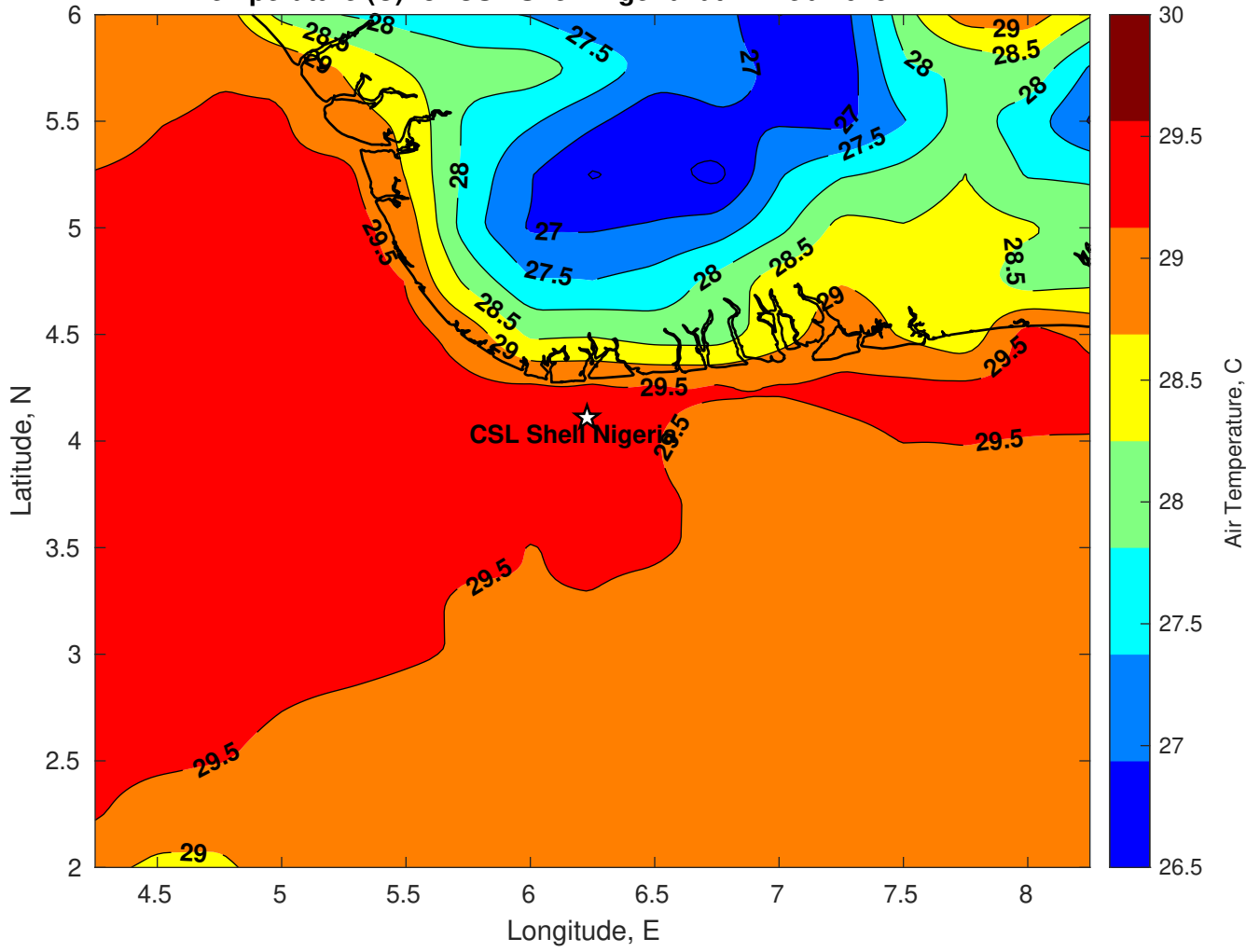
Surface Pressure (mb) for CSL Shell Nigeria at 22-Feb-2025 00:00:00



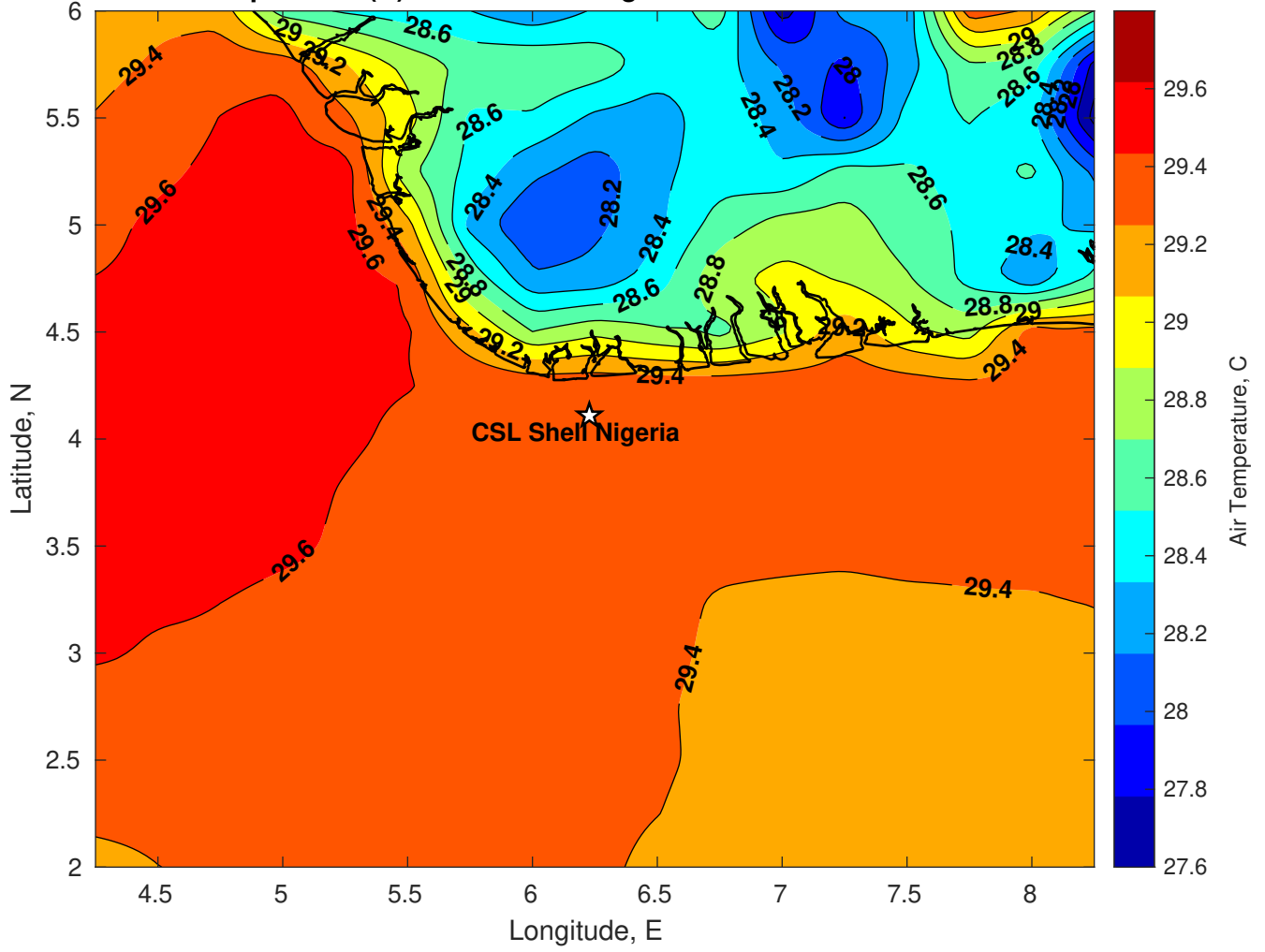
Surface Pressure (mb) for CSL Shell Nigeria at 23-Feb-2025 00:00:00



Air Temperature (C) for CSL Shell Nigeria at 21-Feb-2025



Air Temperature (C) for CSL Shell Nigeria at 21-Feb-2025



Air Temperature (C) for CSL Shell Nigeria at 21-Feb-2025

