
Marine Weather Forecast for Tampnet P2378 South Texas Cable Route Geophysical
Forecast valid as of 21-Feb-2025 0900 GMT

All times are local.

Today

Winds: NE, 15-20 kts.
Waves: NE, 5-6 feet, 7-8 sec.
No currents available.

Tonight

Winds: E, 20-25 kts.
Waves: E, 7-8 feet, 7-8 sec.
No currents available.

Friday

Winds: NE, 20-25 kts.
Waves: E, 6-7 feet, 7-8 sec.
No currents available.

Saturday Night

Winds: NE, 20-25 kts.
Waves: E, 6-7 feet, 7-8 sec.
No currents available.

Saturday

Winds: E, 15-20 kts.
Waves: NE, 7-8 feet, 7-8 sec.
No currents available.

Sunday Night

Winds: NE, 10-15 kts.
Waves: E, 4-5 feet, 6-7 sec.
No currents available.

Sunday

Winds: N, 15-20 kts.
Waves: E, 5-6 feet, 6-7 sec.
No currents available.

Monday Night

Winds: NE, 10-15 kts.
Waves: E, 2-3 feet, 6-7 sec.
No currents available.

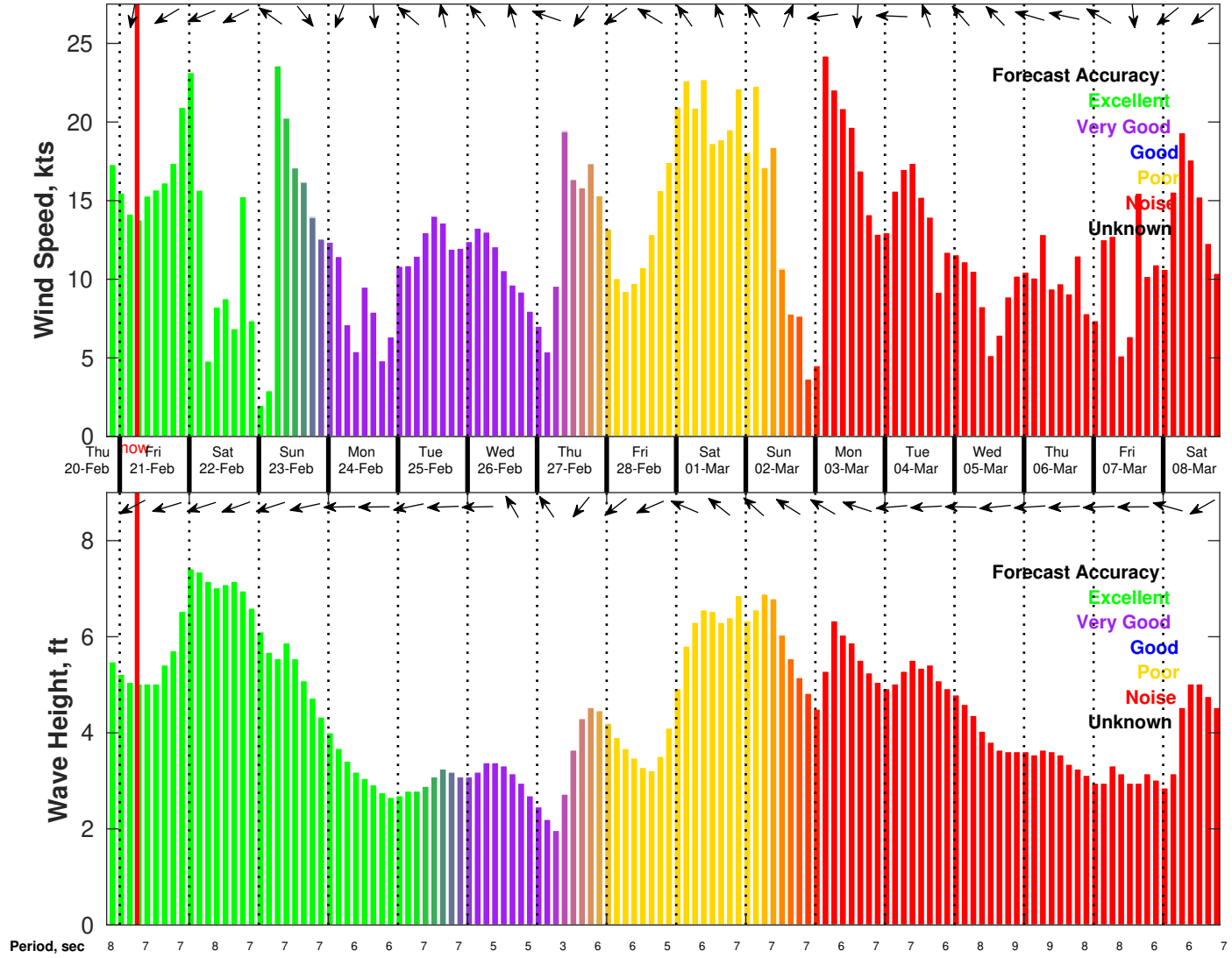
Monday

Winds: E, 5-10 kts.
Waves: E, 3-4 feet, 6-7 sec.
No currents available.

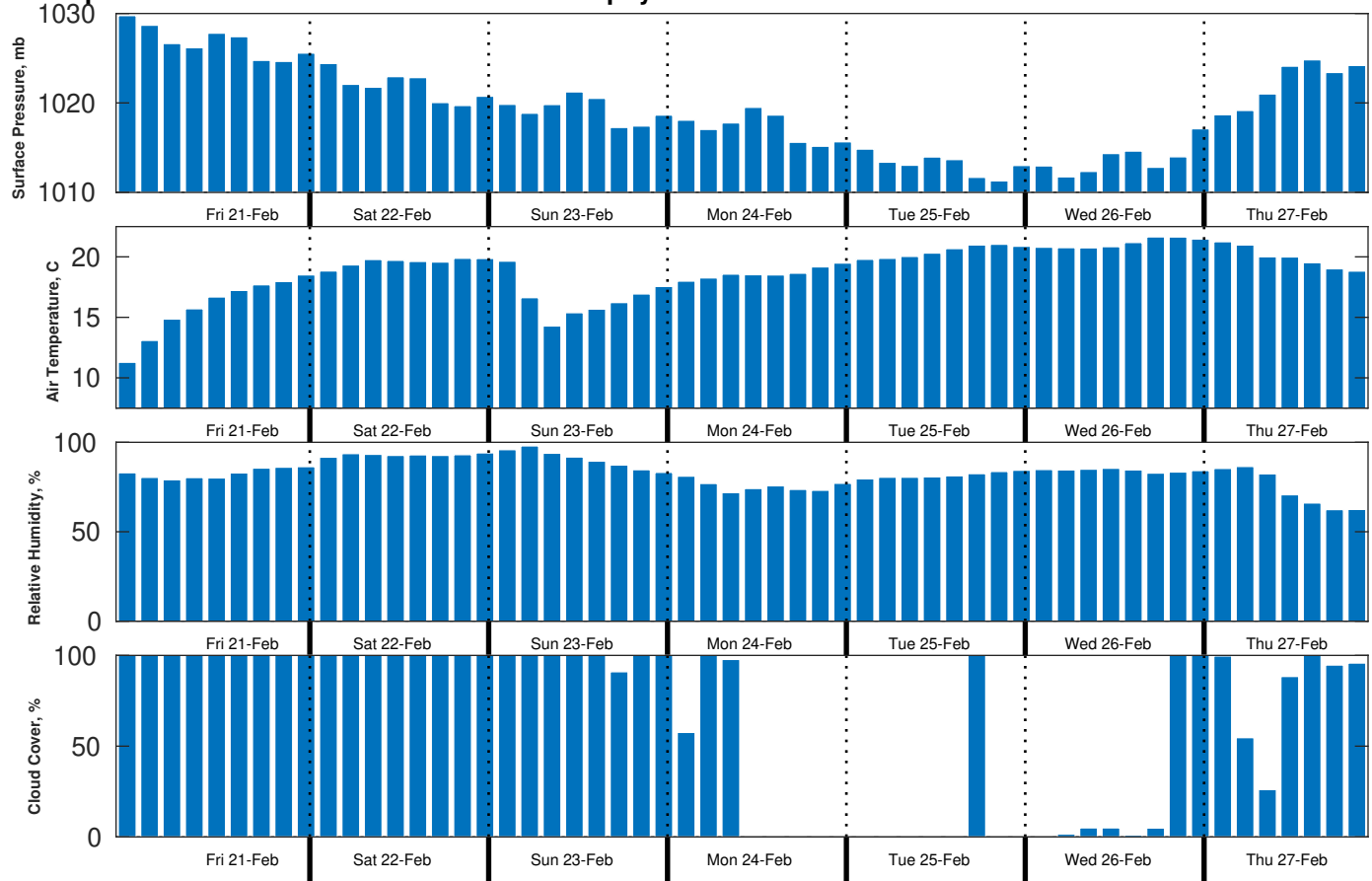
Tuesday Night

Winds: NE, 10-15 kts.
Waves: E, 3-4 feet, 7-8 sec.
No currents available.

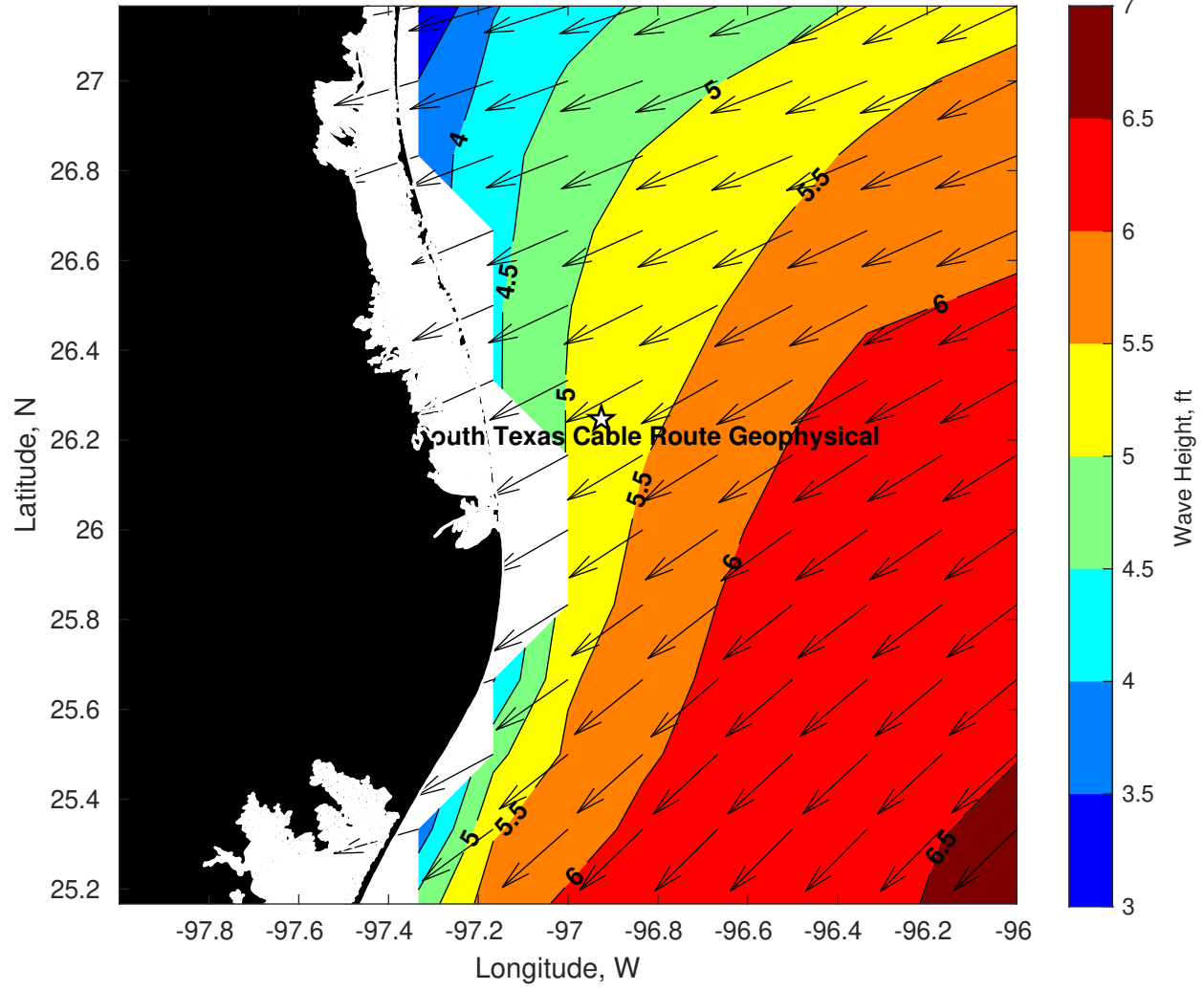
Wind & Wave Forecast for Tampnet P2378 South Texas Cable Route Geophysical from 20-Feb-2025 20:00:00 to 08-Mar-2025 20:00:00



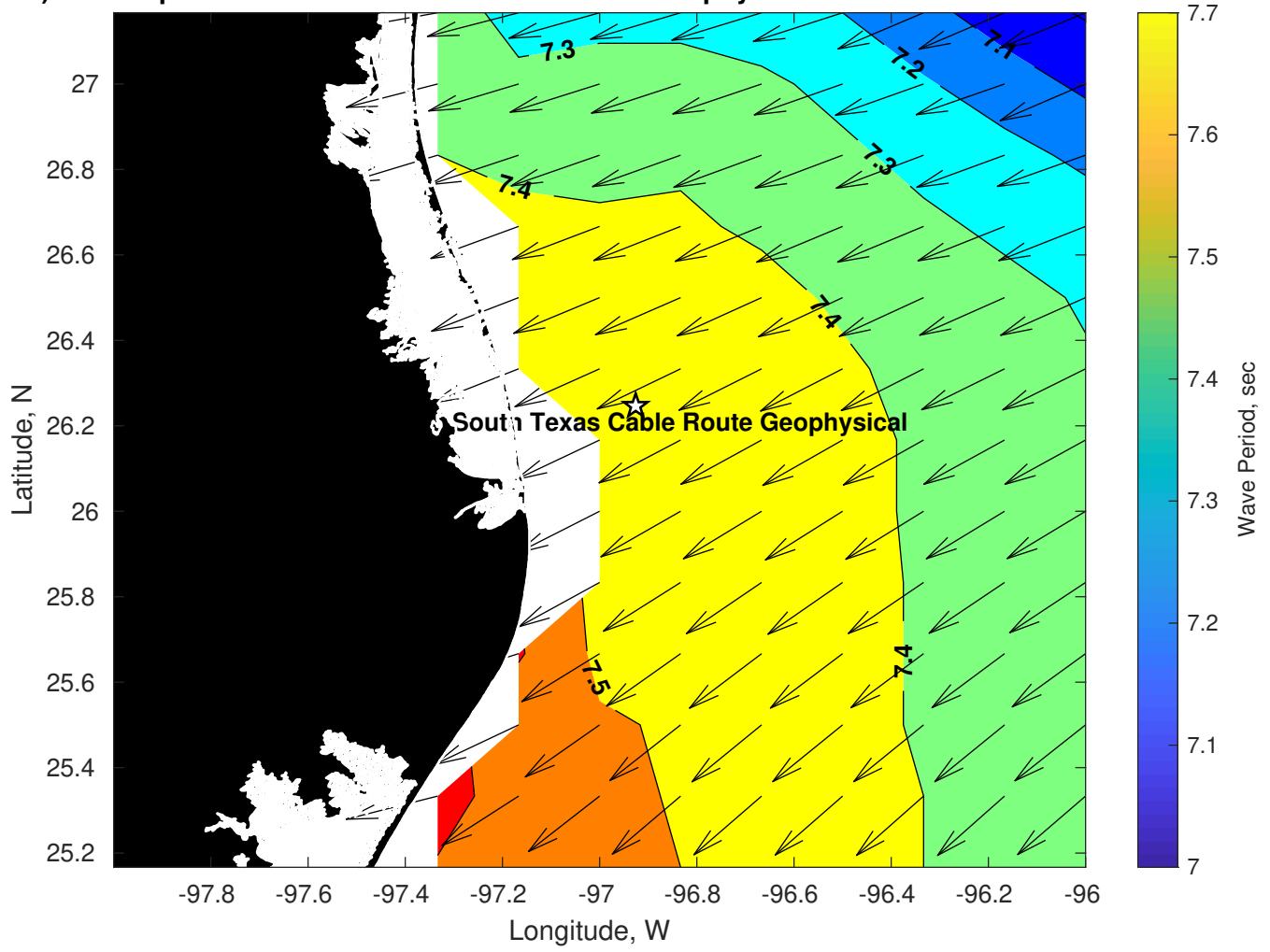
Met Forecast for Tampnet P2378 South Texas Cable Route Geophysical from 21-Feb-2025 00:00:00 to 28-Feb-2025 00:00:00



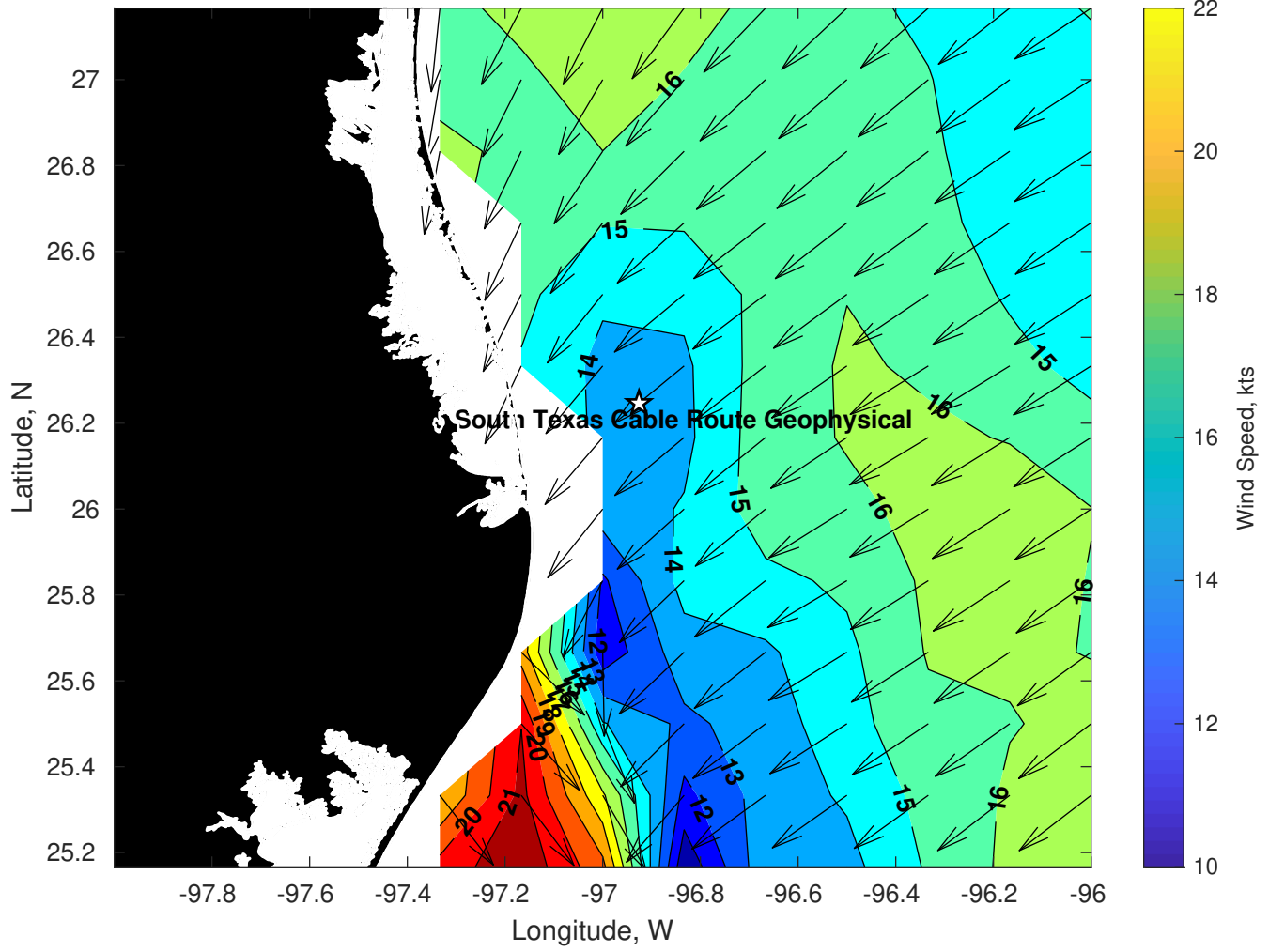
Wave Height (ft) for Tampnet P2378 South Texas Cable Route Geophysical at 21-Feb-2025 09:00:00



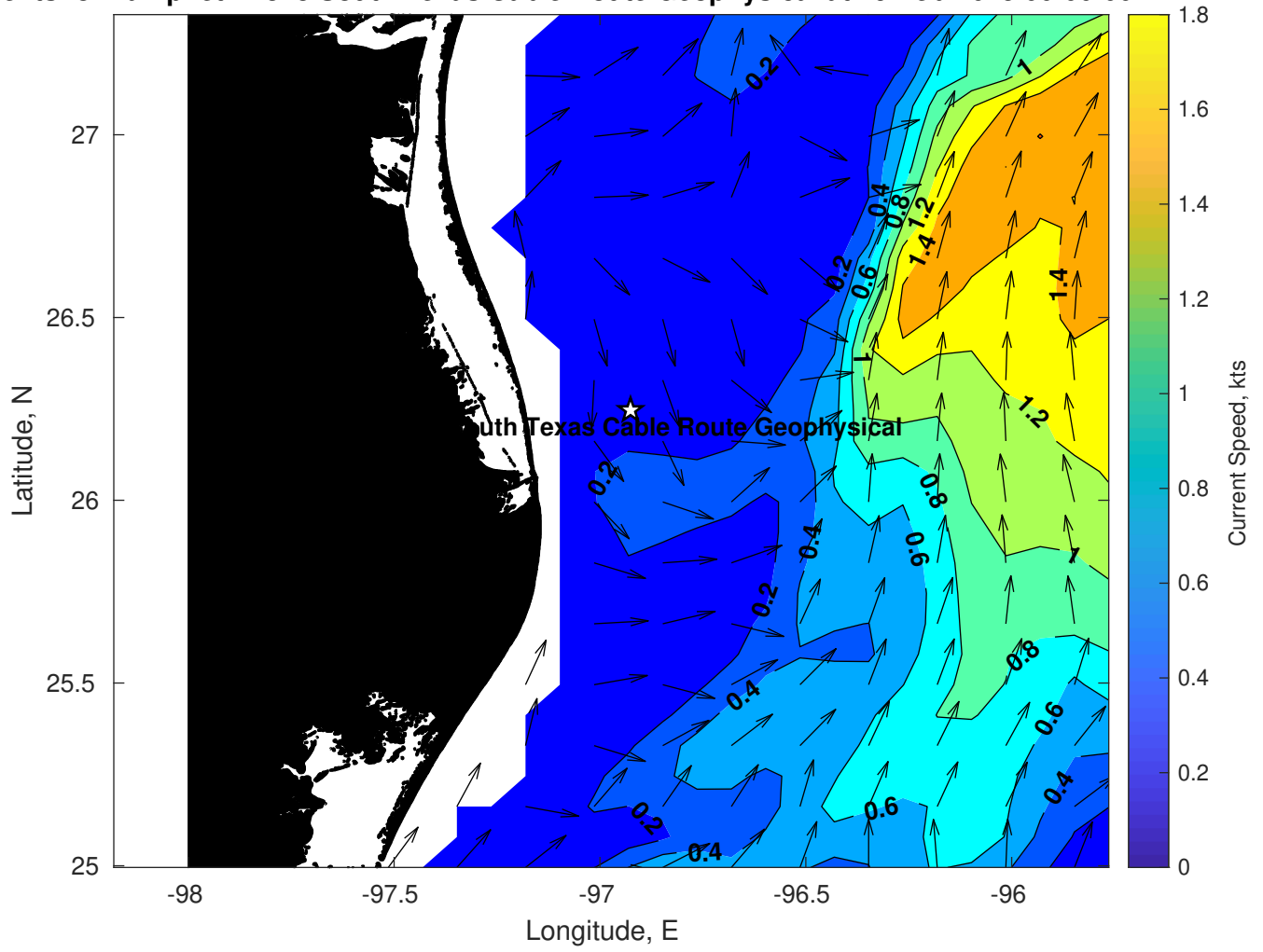
Period (sec) for Tampnet P2378 South Texas Cable Route Geophysical at 21-Feb-2025 09:00:00



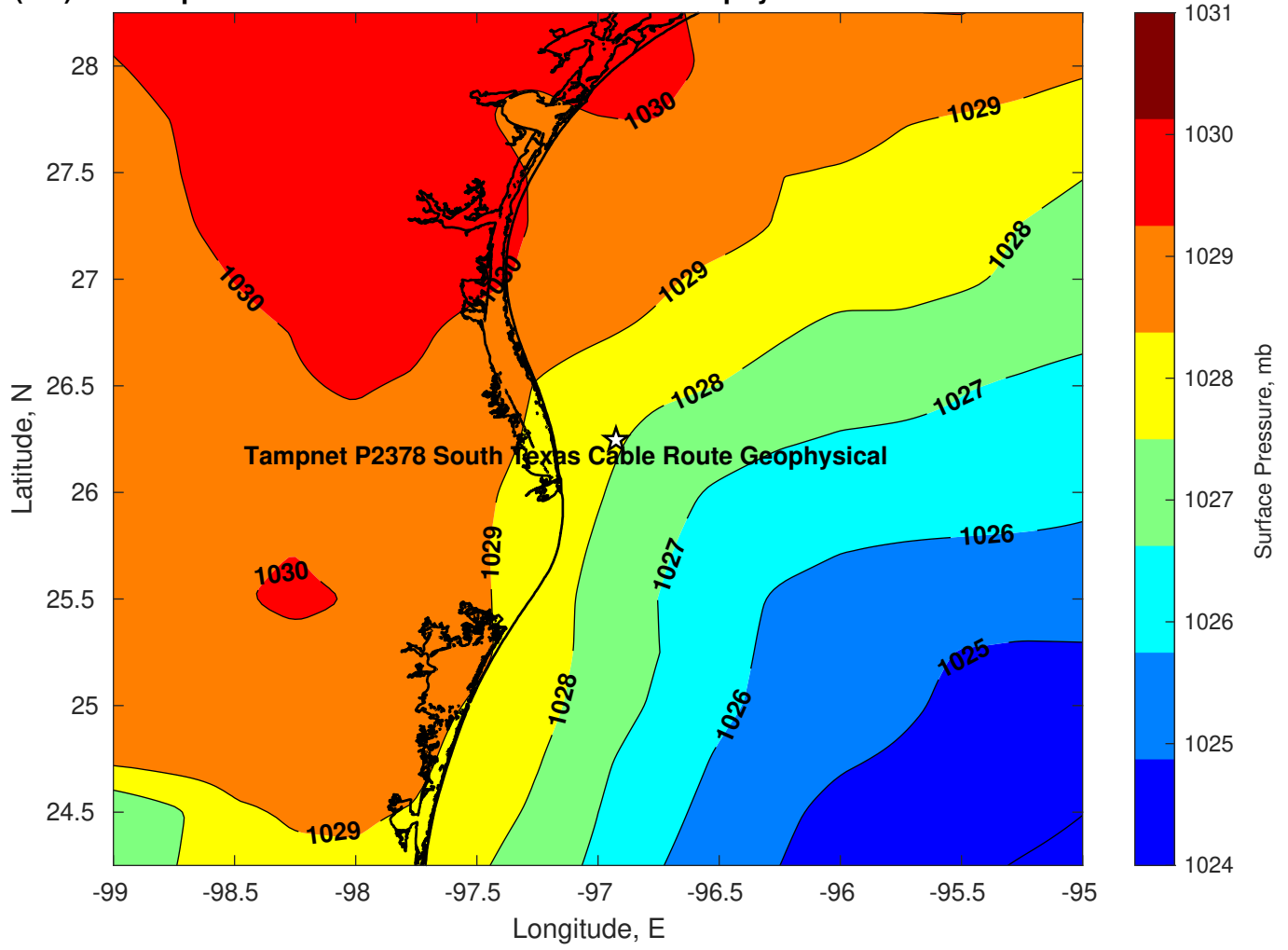
Winds (kts) for Tampnet P2378 South Texas Cable Route Geophysical at 21-Feb-2025 09:00:00



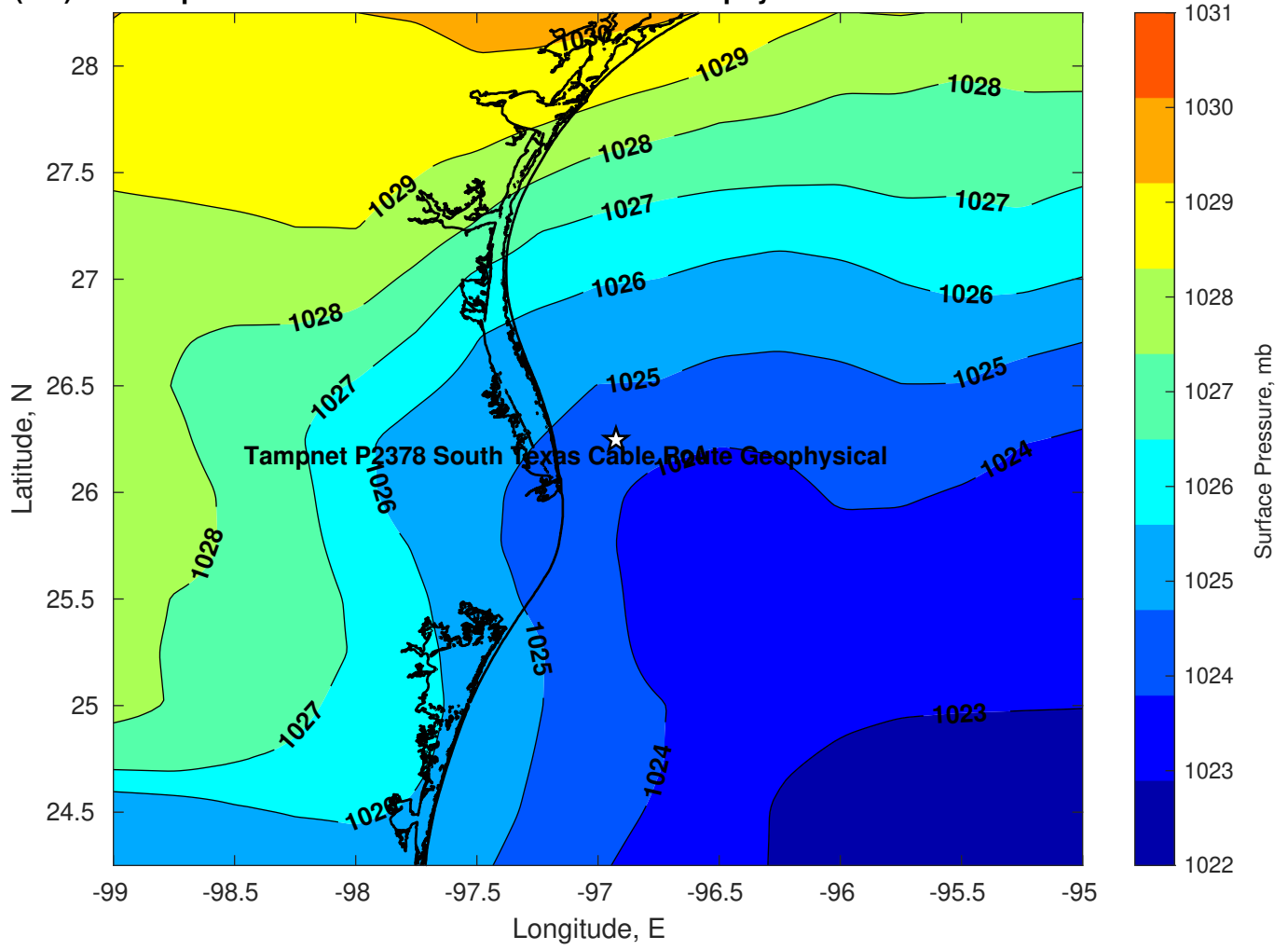
Surface Currents for Tampnet P2378 South Texas Cable Route Geophysical at 19-Feb-2025 00:00:00



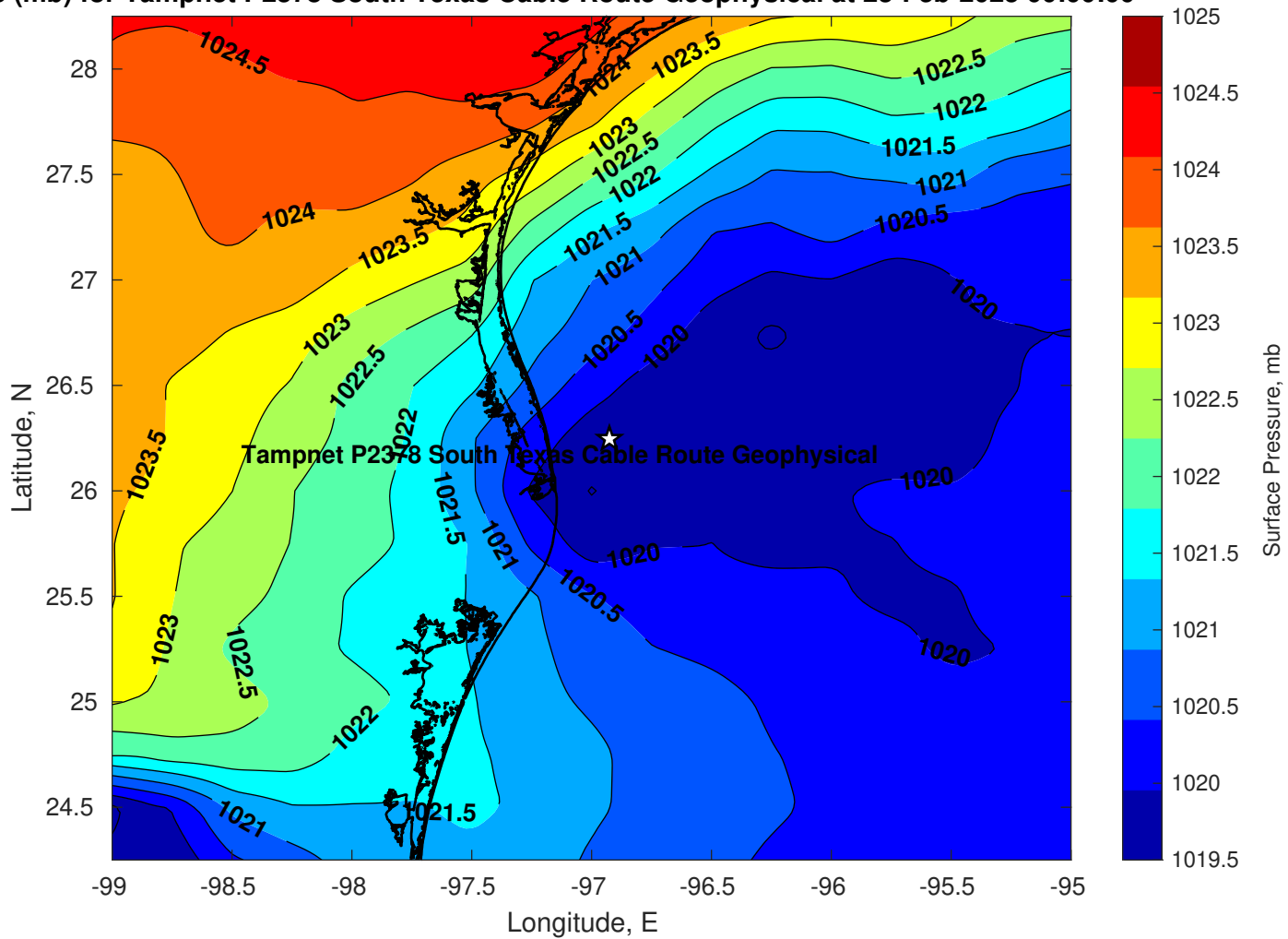
Pressure (mb) for Tampnet P2378 South Texas Cable Route Geophysical at 21-Feb-2025 00:00:00



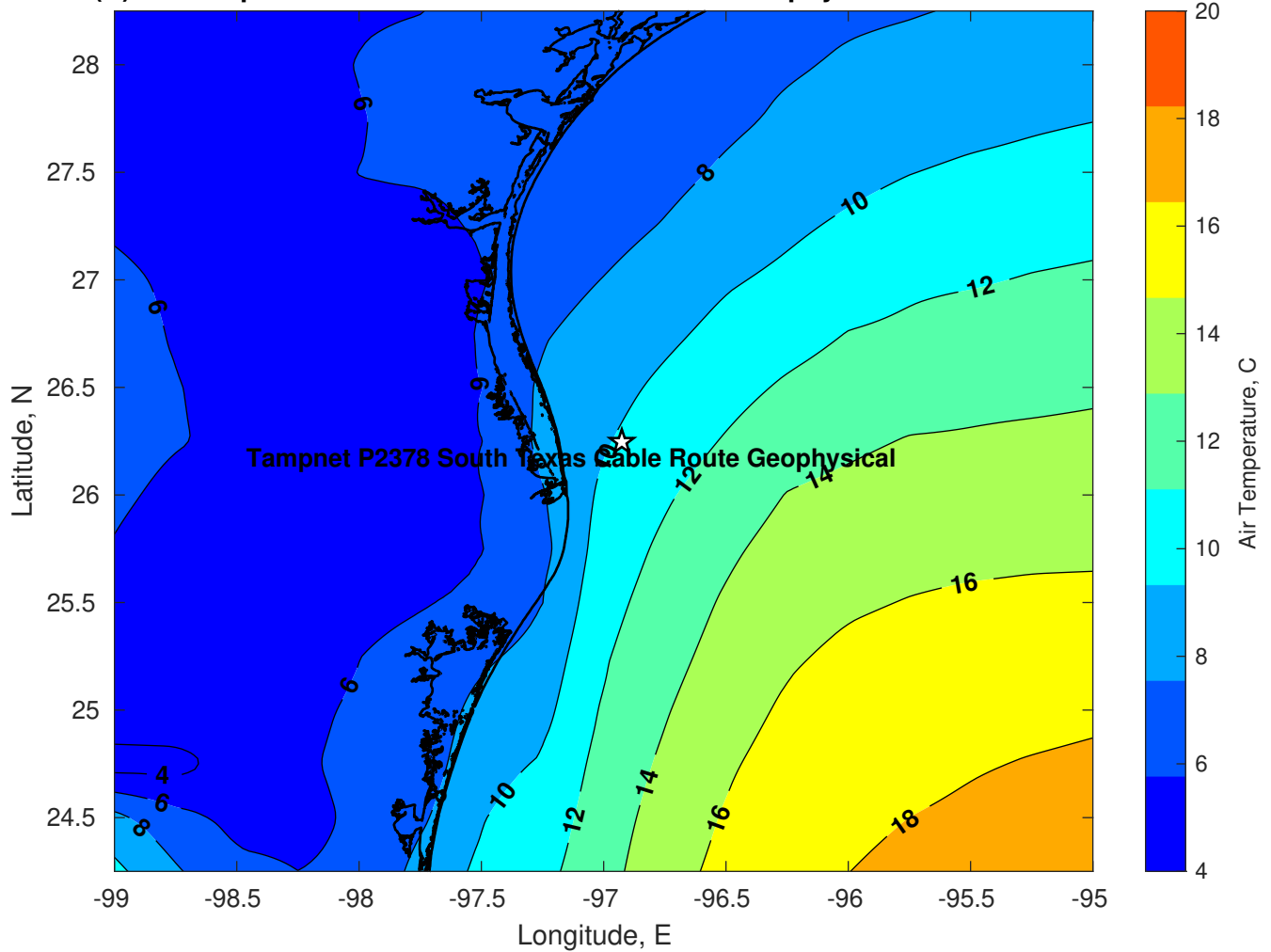
Pressure (mb) for Tampnet P2378 South Texas Cable Route Geophysical at 22-Feb-2025 00:00:00



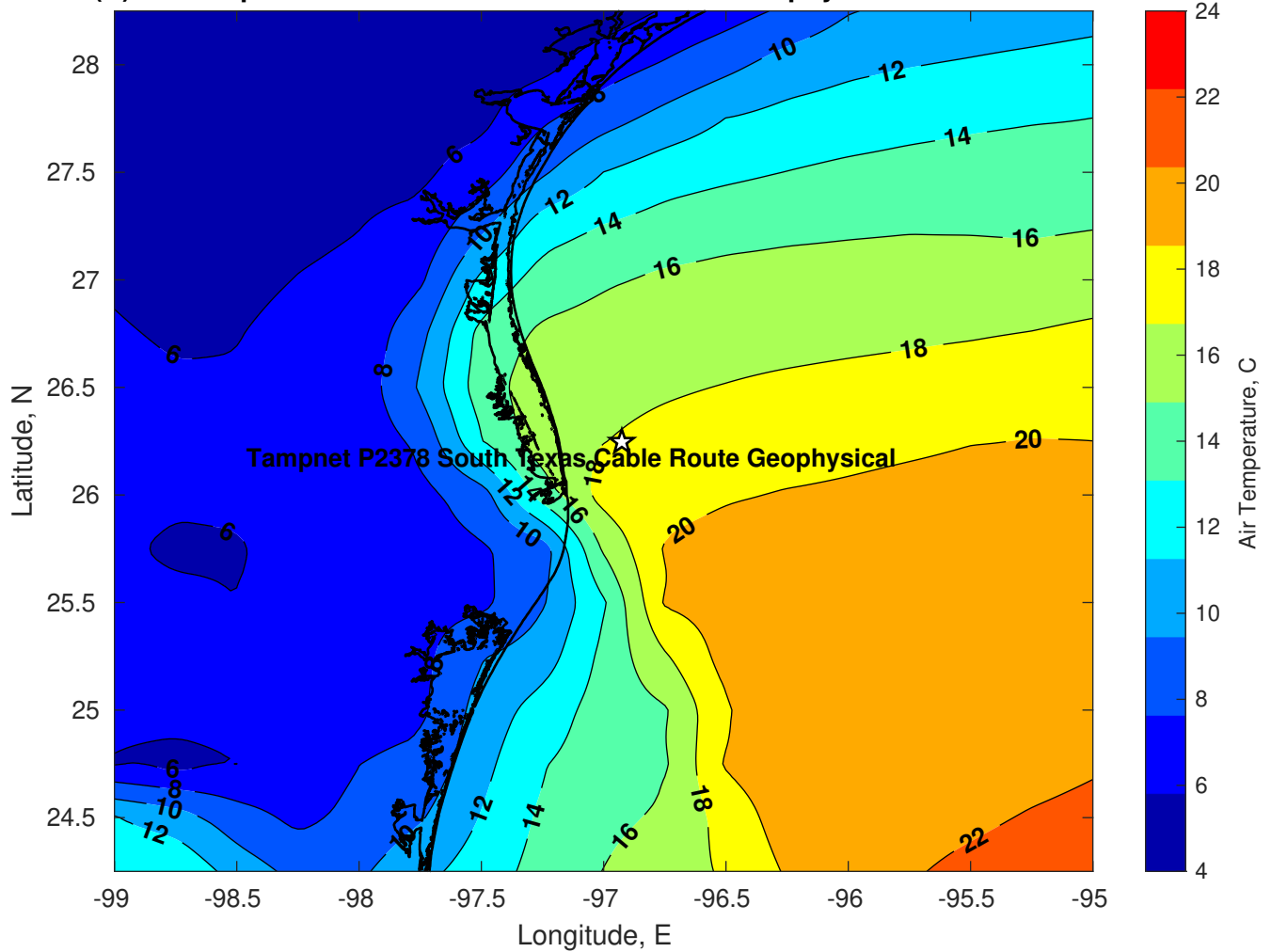
Pressure (mb) for Tampnet P2378 South Texas Cable Route Geophysical at 23-Feb-2025 00:00:00



Air Temperature (C) for Tampnet P2378 South Texas Cable Route Geophysical at 21-Feb-2025



Air Temperature (C) for Tampnet P2378 South Texas Cable Route Geophysical at 21-Feb-2025



Air Temperature (C) for Tampnet P2378 South Texas Cable Route Geophysical at 21-Feb-2025

