
Marine Weather Forecast for CSA (ONHYM) PPL EBS - Nigeria
Forecast valid as of 23-Feb-2025 0900 GMT

All times are local.

Today

Winds: W, 10-15 kts.
Waves: NW, 2-3 feet, 11-12 sec.
No currents available.

Tonight

Winds: N, 10-15 kts.
Waves: NW, 2-3 feet, 11-12 sec.
No currents available.

Monday

Winds: NW, 10-15 kts.
Waves: NW, 2-3 feet, 11-12 sec.
No currents available.

Monday Night

Winds: NW, 10-15 kts.
Waves: NW, 2-3 feet, 10-11 sec.
No currents available.

Tuesday

Winds: NW, 10-15 kts.
Waves: NW, 2-3 feet, 10-11 sec.
No currents available.

Tuesday Night

Winds: NW, 10-15 kts.
Waves: NW, 3-4 feet, 12-13 sec.
No currents available.

Wednesday

Winds: NW, 10-15 kts.
Waves: NW, 2-3 feet, 20-21 sec.
No currents available.

Wednesday Night

Winds: N, 10-15 kts.
Waves: NW, 2-3 feet, 19-20 sec.
No currents available.

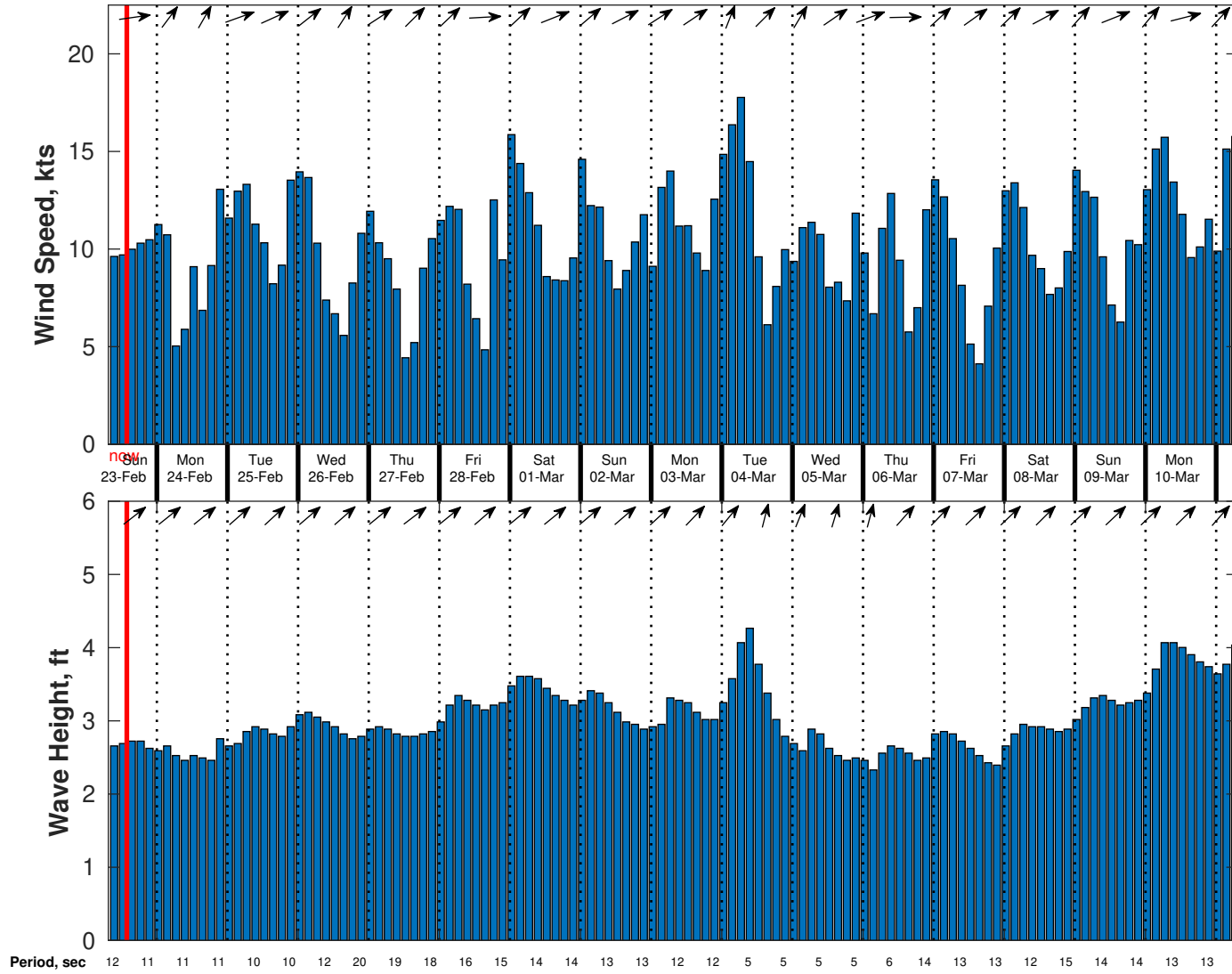
Thursday

Winds: NW, 10-15 kts.
Waves: NW, 2-3 feet, 18-19 sec.
No currents available.

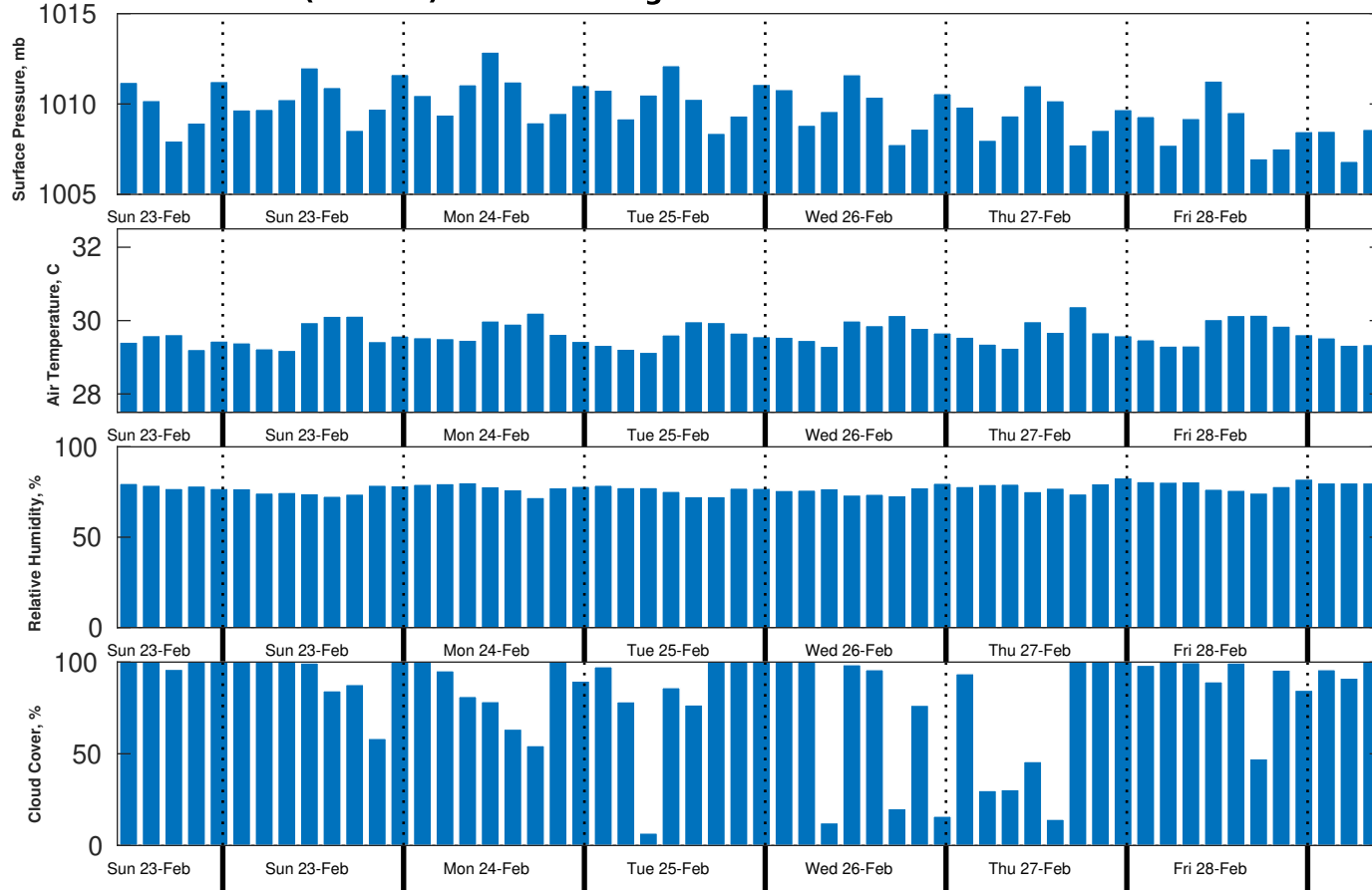
Thursday Night

Winds: NW, 10-15 kts.
Waves: NW, 3-4 feet, 16-17 sec.
No currents available.

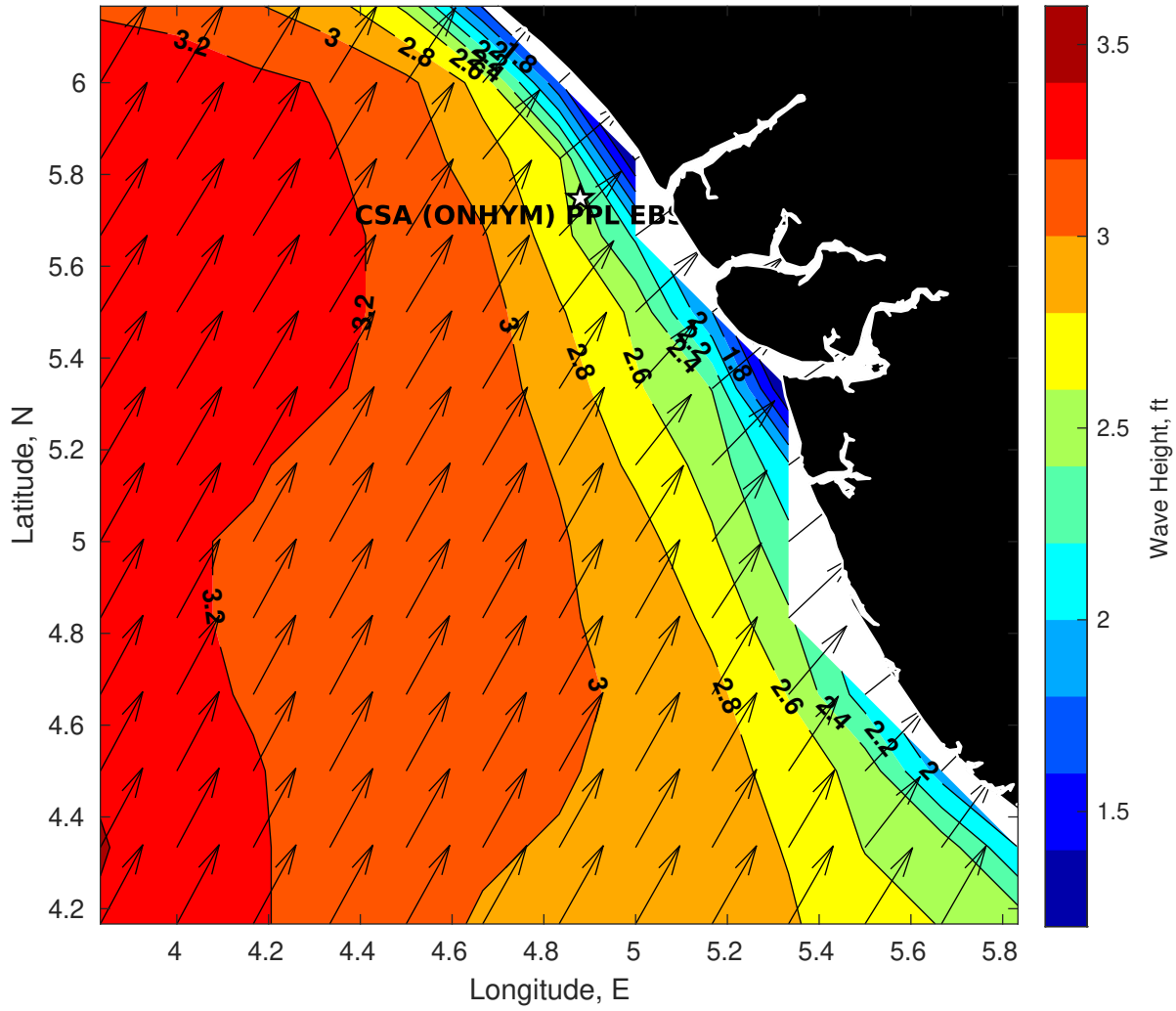
Wind & Wave Forecast for CSA (ONHYM) PPL EBS - Nigeria from 23-Feb-2025 08:00:00 to 11-Mar-2025 08:00:00



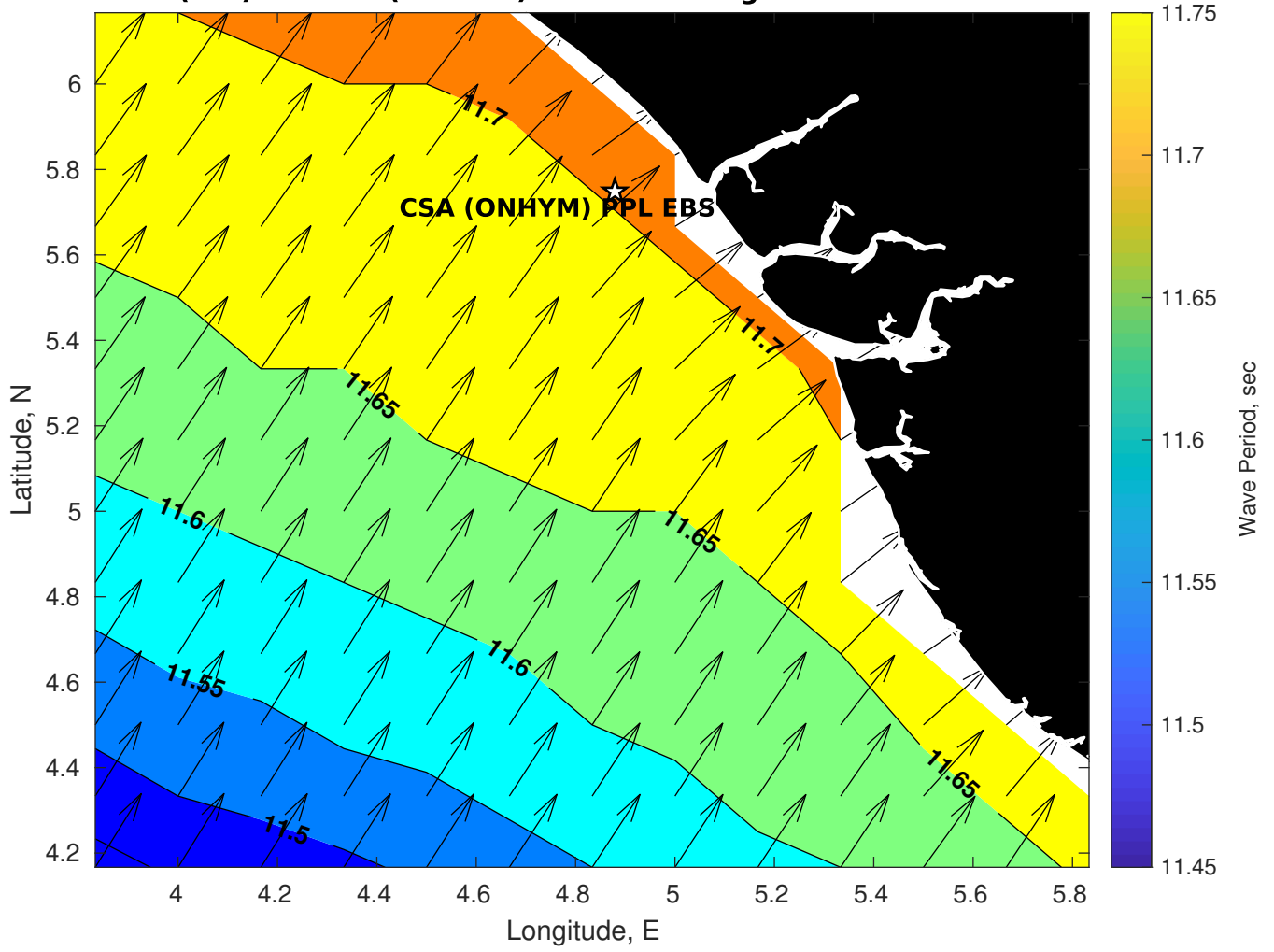
Met Forecast for CSA (ONHYM) PPL EBS - Nigeria from 23-Feb-2025 06:00:00 to 02-Mar-2025 06:00:00



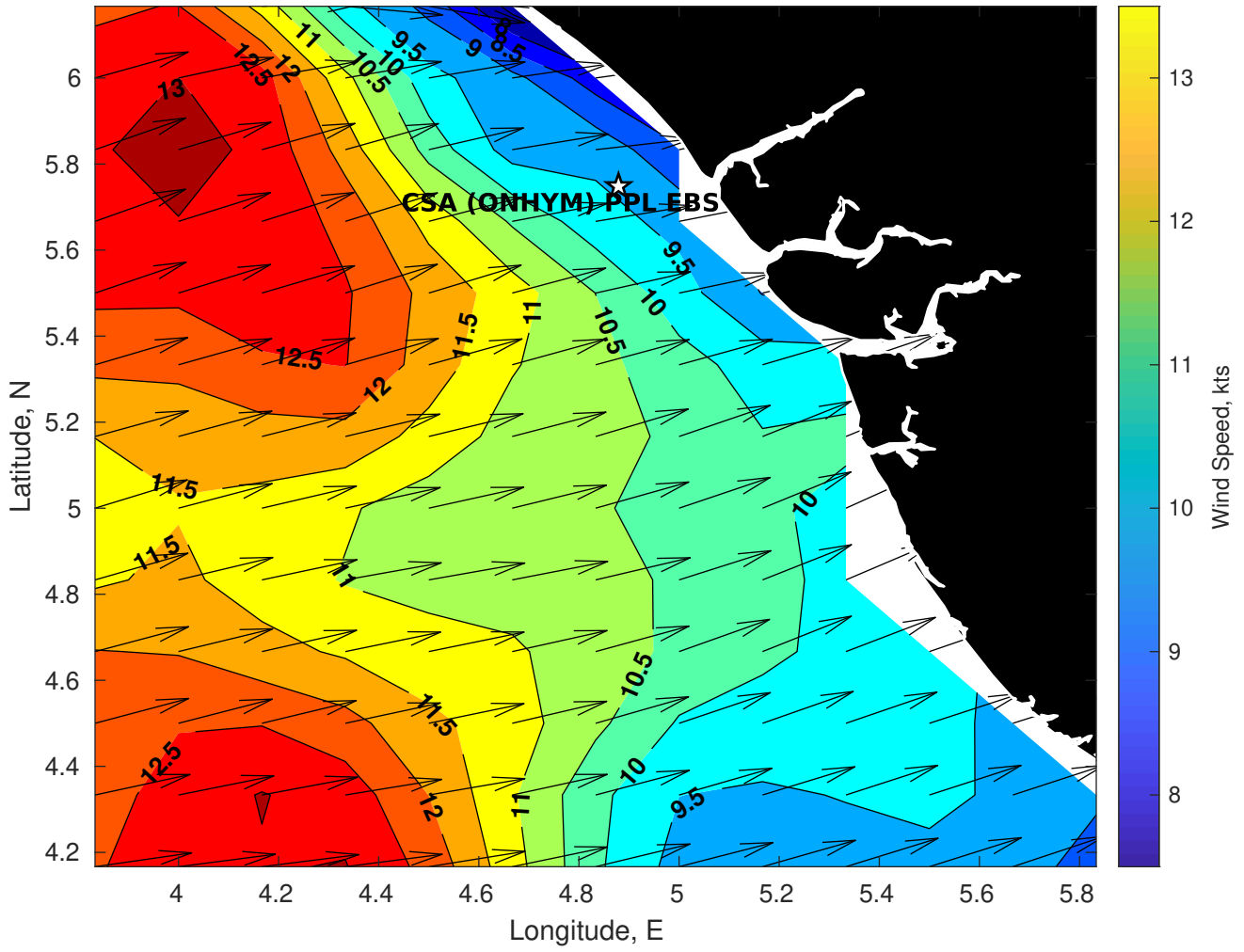
Wave Height (ft) for CSA (ONHYM) PPL EBS - Nigeria at 23-Feb-2025 09:00:00



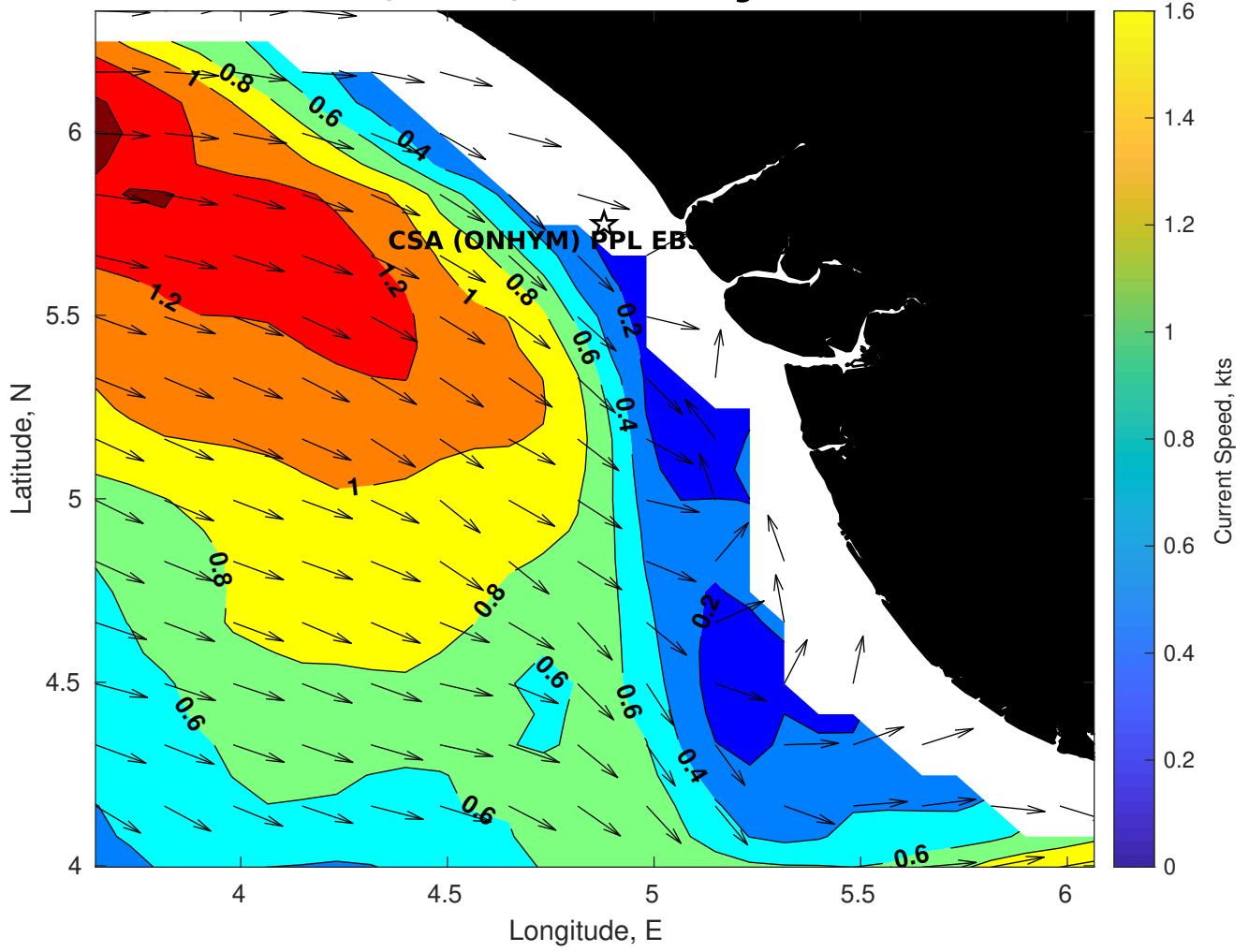
Wave Period (sec) for CSA (ONHYM) PPL EBS - Nigeria at 23-Feb-2025 09:00:00



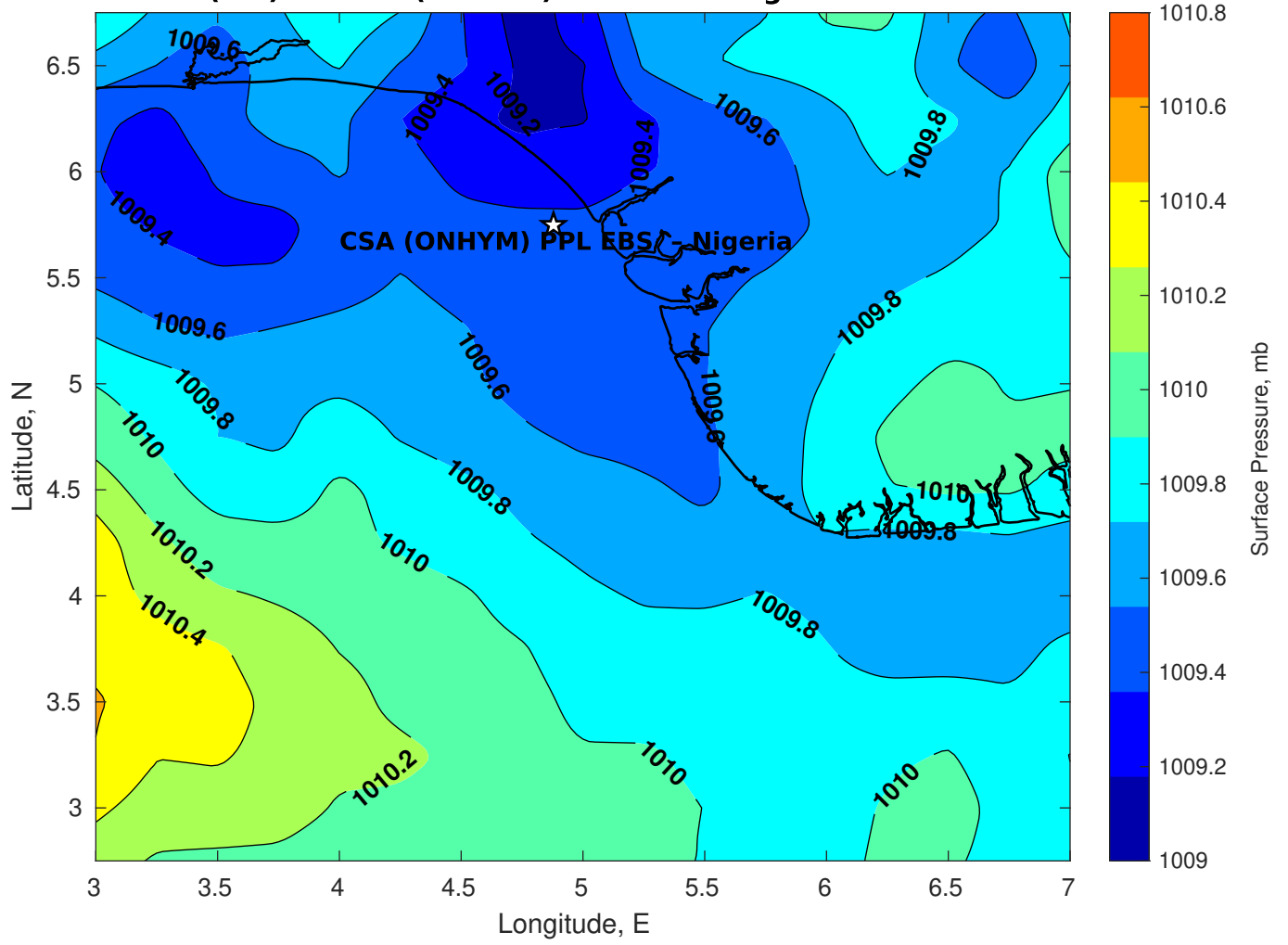
Winds (kts) for CSA (ONHYM) PPL EBS - Nigeria at 23-Feb-2025 09:00:00



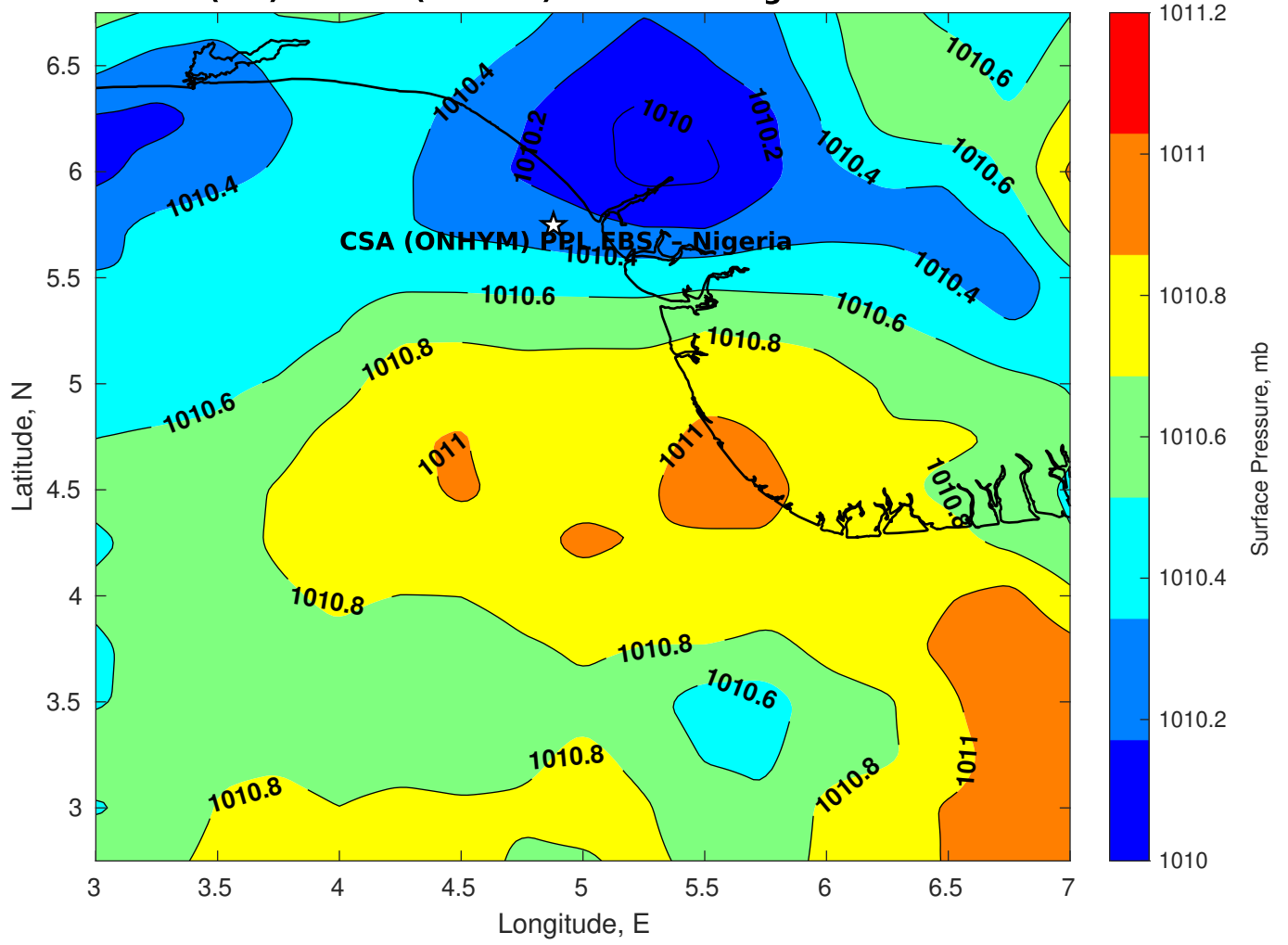
Surface Currents for CSA (ONHYM) PPL EBS - Nigeria at 22-Feb-2025 00:00:00



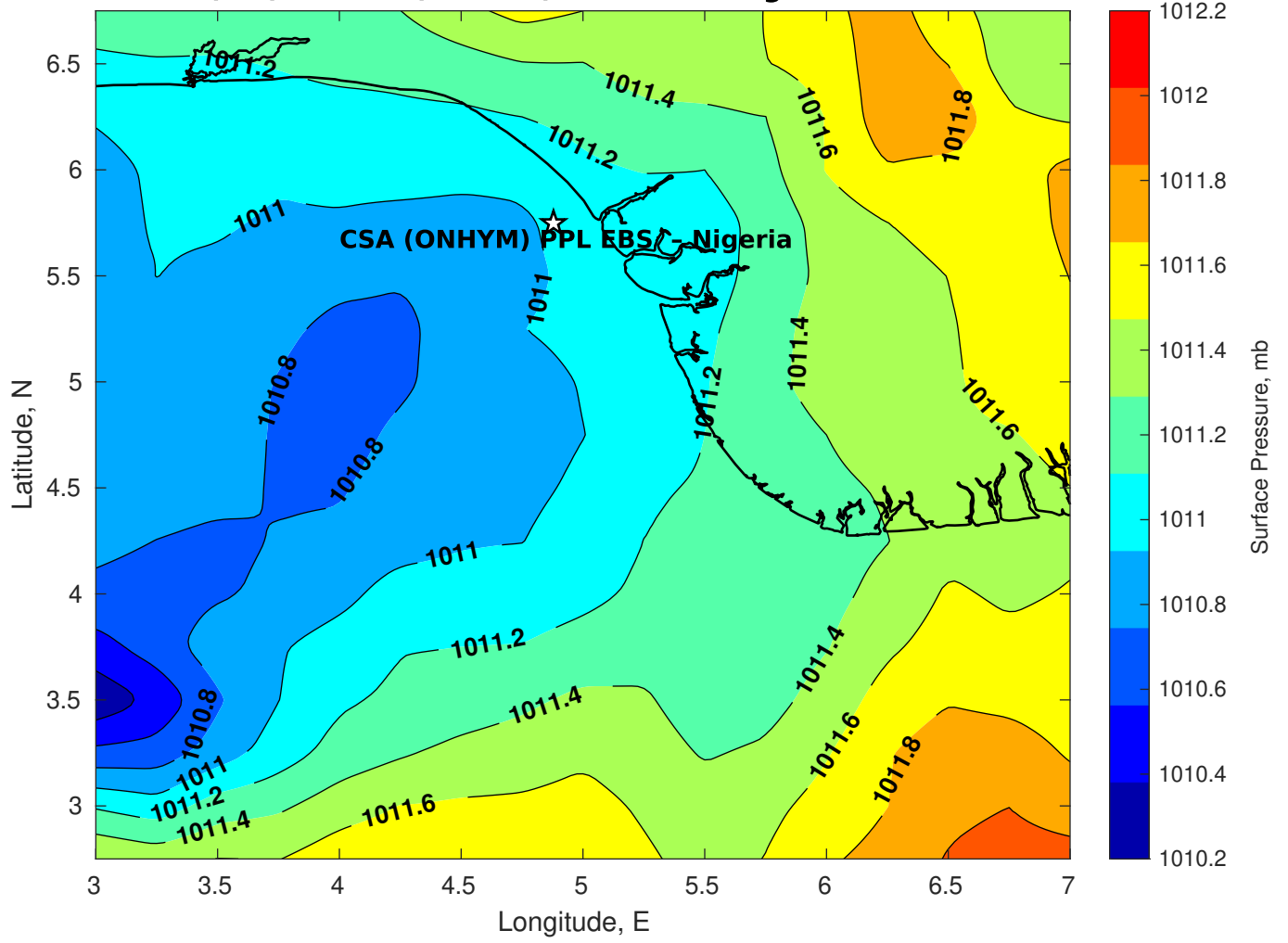
Surface Pressure (mb) for CSA (ONHYM) PPL EBS - Nigeria at 23-Feb-2025 06:00:00



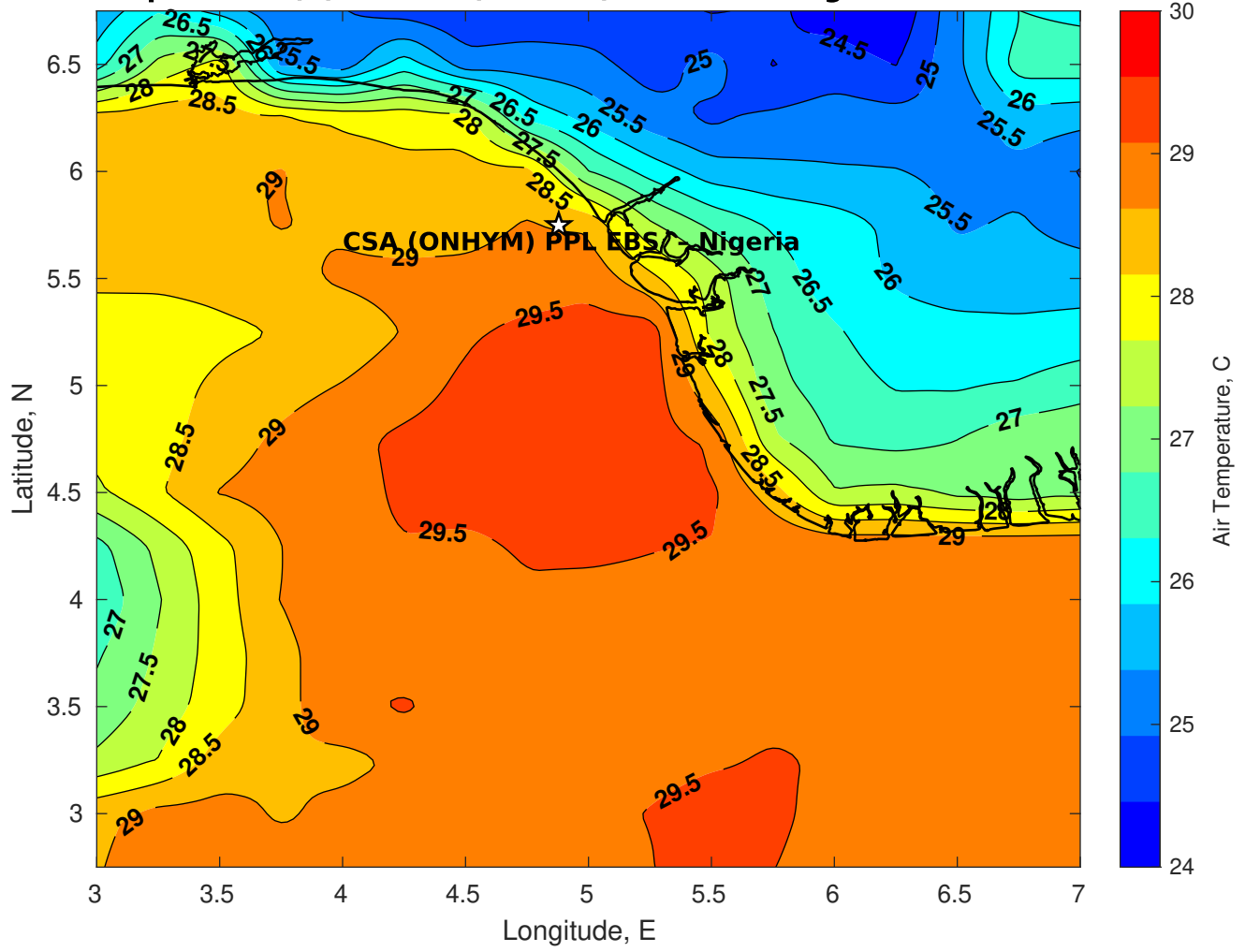
Surface Pressure (mb) for CSA (ONHYM) PPL EBS - Nigeria at 24-Feb-2025 06:00:00



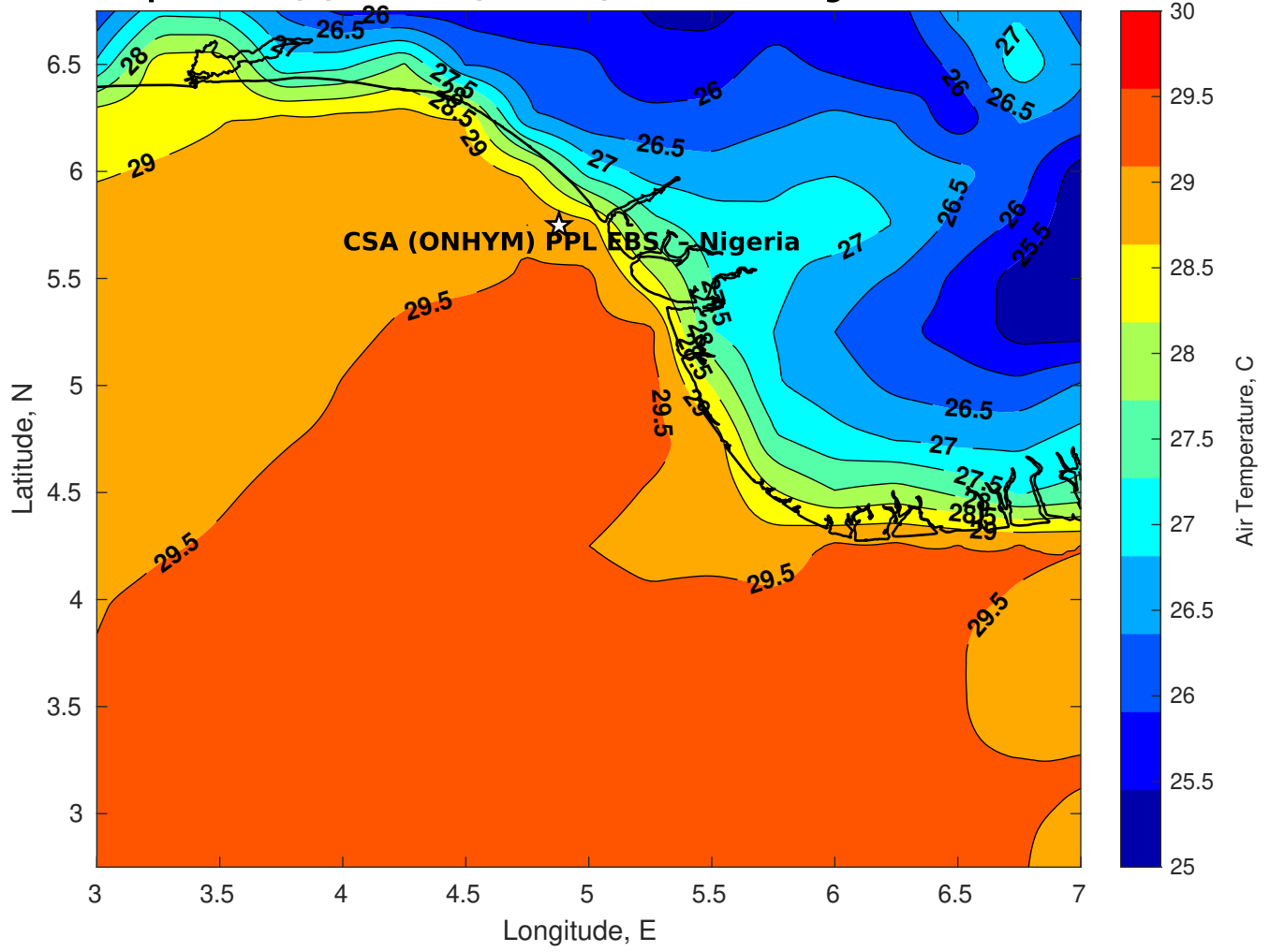
Surface Pressure (mb) for CSA (ONHYM) PPL EBS - Nigeria at 25-Feb-2025 06:00:00



Air Temperature (C) for CSA (ONHYM) PPL EBS - Nigeria at 23-Feb-2025



Air Temperature (C) for CSA (ONHYM) PPL EBS - Nigeria at 23-Feb-2025



Air Temperature (C) for CSA (ONHYM) PPL EBS - Nigeria at 23-Feb-2025

