

\*\*\*\*\*  
Marine Weather Forecast for Gyre  
Forecast valid as of 23-Feb-2025 0900 GMT  
\*\*\*\*\*

All times are local.

Today

Winds: NE, 10-15 kts.  
Waves: NW, 5-6 feet, 13-14 sec.  
No currents available.

Tonight

Winds: NE, 10-15 kts.  
Waves: NW, 5-6 feet, 13-14 sec.  
No currents available.

Monday

Winds: NE, 10-15 kts.  
Waves: NW, 5-6 feet, 12-13 sec.  
No currents available.

Monday Night

Winds: NE, 10-15 kts.  
Waves: NW, 6-7 feet, 19-20 sec.  
No currents available.

Tuesday

Winds: E, 5-10 kts.  
Waves: NW, 5-6 feet, 15-16 sec.  
No currents available.

Tuesday Night

Winds: NE, 10-15 kts.  
Waves: NW, 4-5 feet, 14-15 sec.  
No currents available.

Wednesday

Winds: NE, 5-10 kts.  
Waves: NW, 4-5 feet, 13-14 sec.  
No currents available.

Wednesday Night

Winds: NE, 10-15 kts.  
Waves: NW, 4-5 feet, 12-13 sec.  
No currents available.

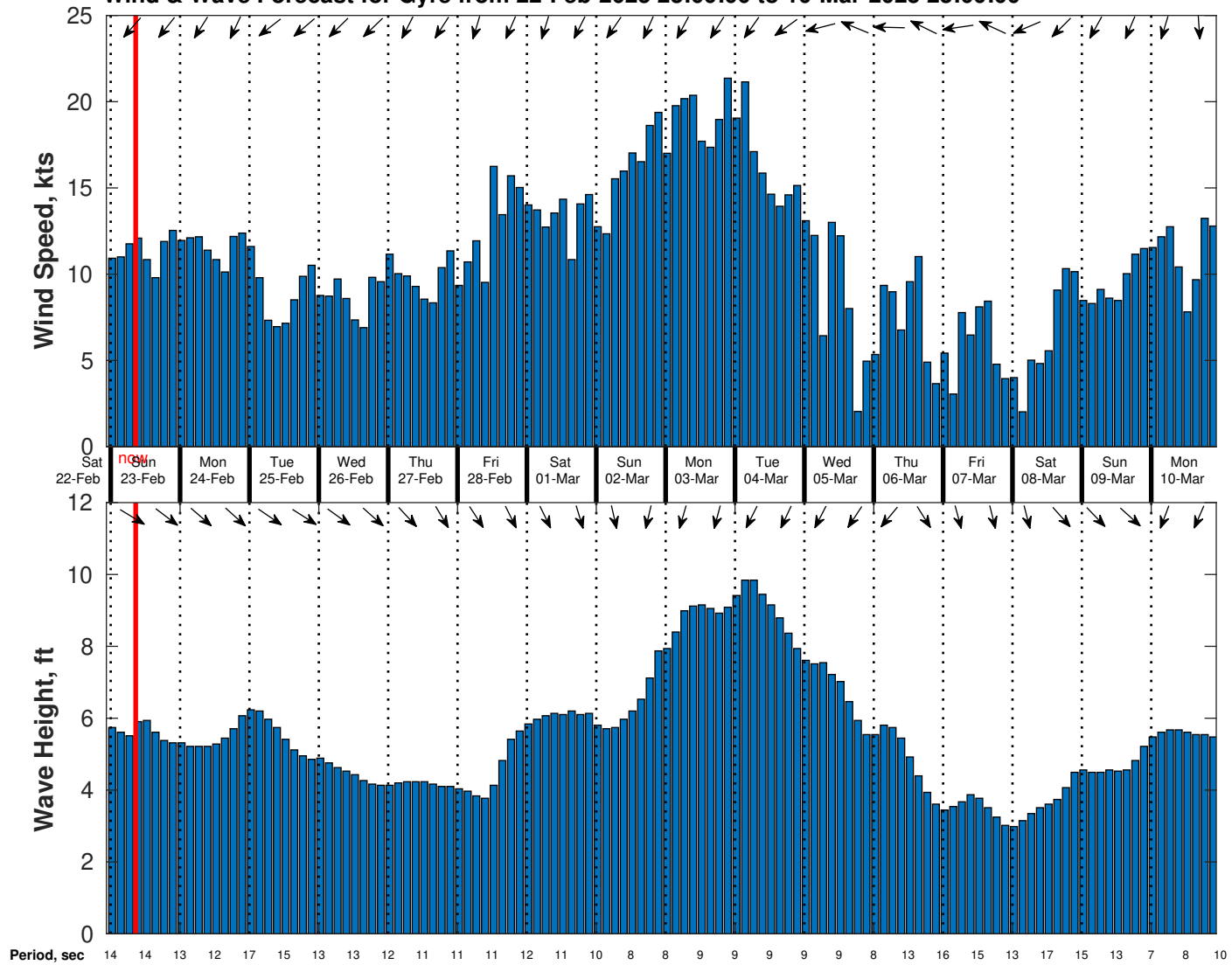
Thursday

Winds: NE, 5-10 kts.  
Waves: NW, 4-5 feet, 11-12 sec.  
No currents available.

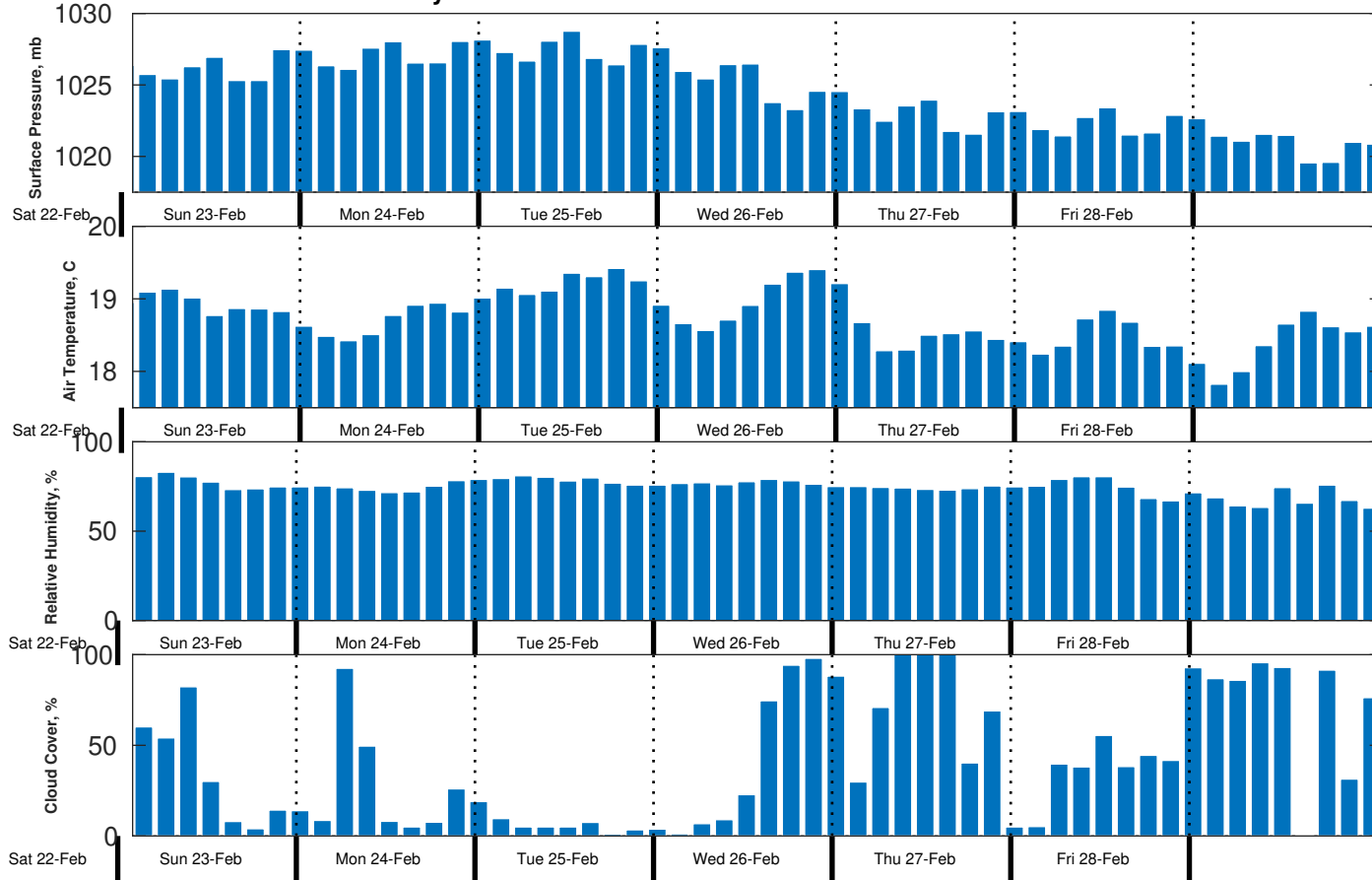
Thursday Night

Winds: N, 10-15 kts.  
Waves: NW, 4-5 feet, 11-12 sec.  
No currents available.

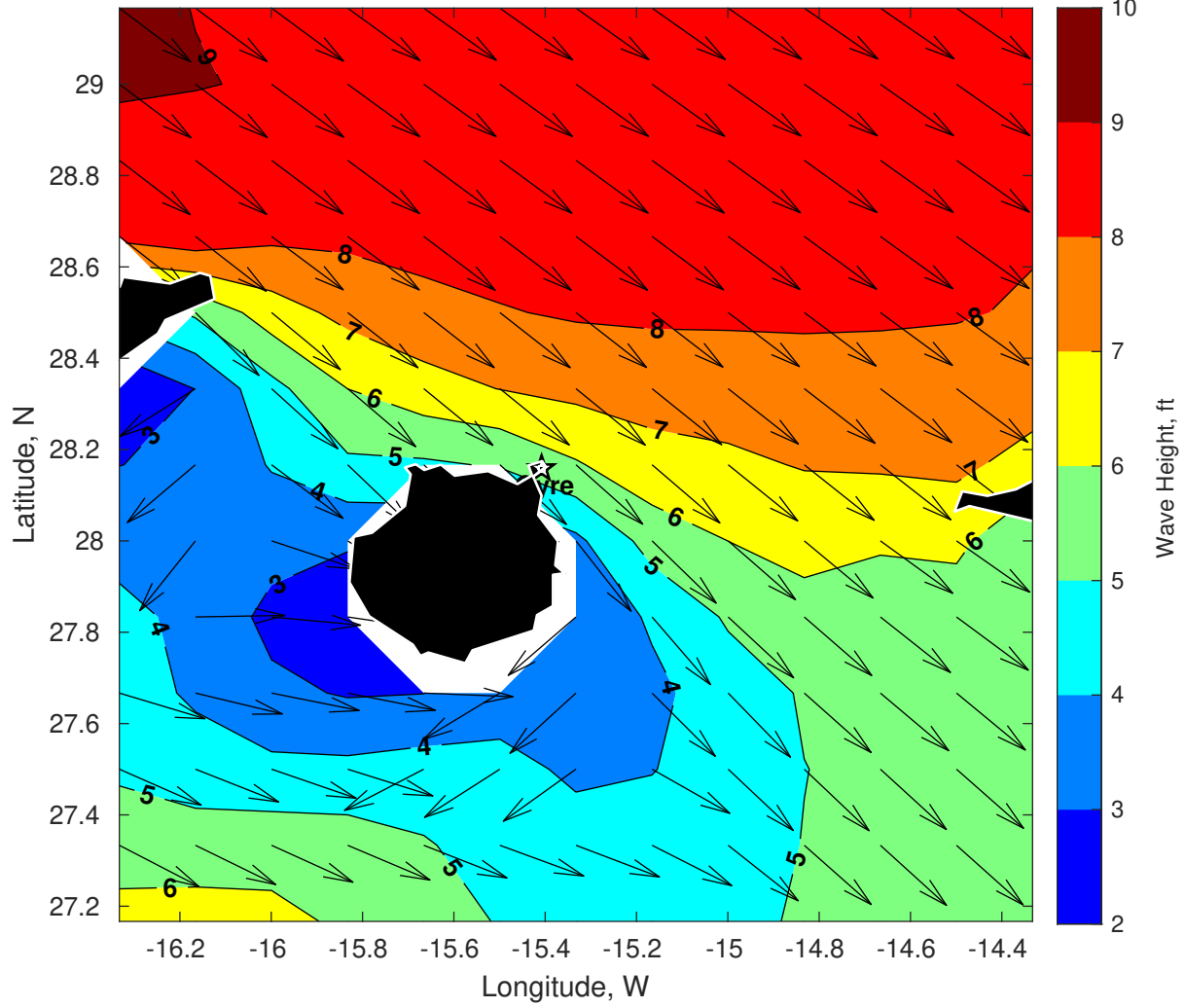
Wind & Wave Forecast for Gyre from 22-Feb-2025 23:00:00 to 10-Mar-2025 23:00:00



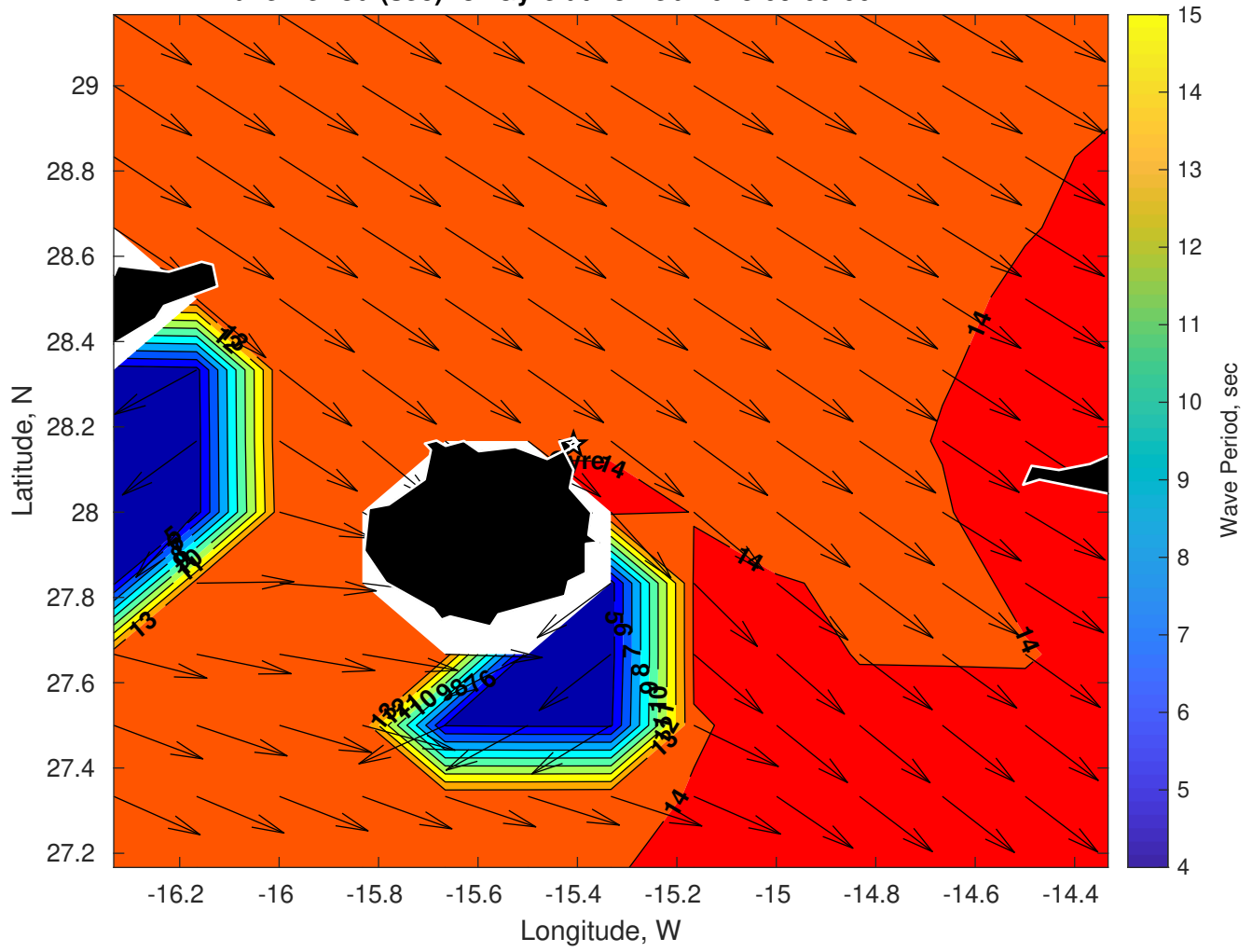
### Met Forecast for Gyre from 22-Feb-2025 23:00:00 to 01-Mar-2025 23:00:00



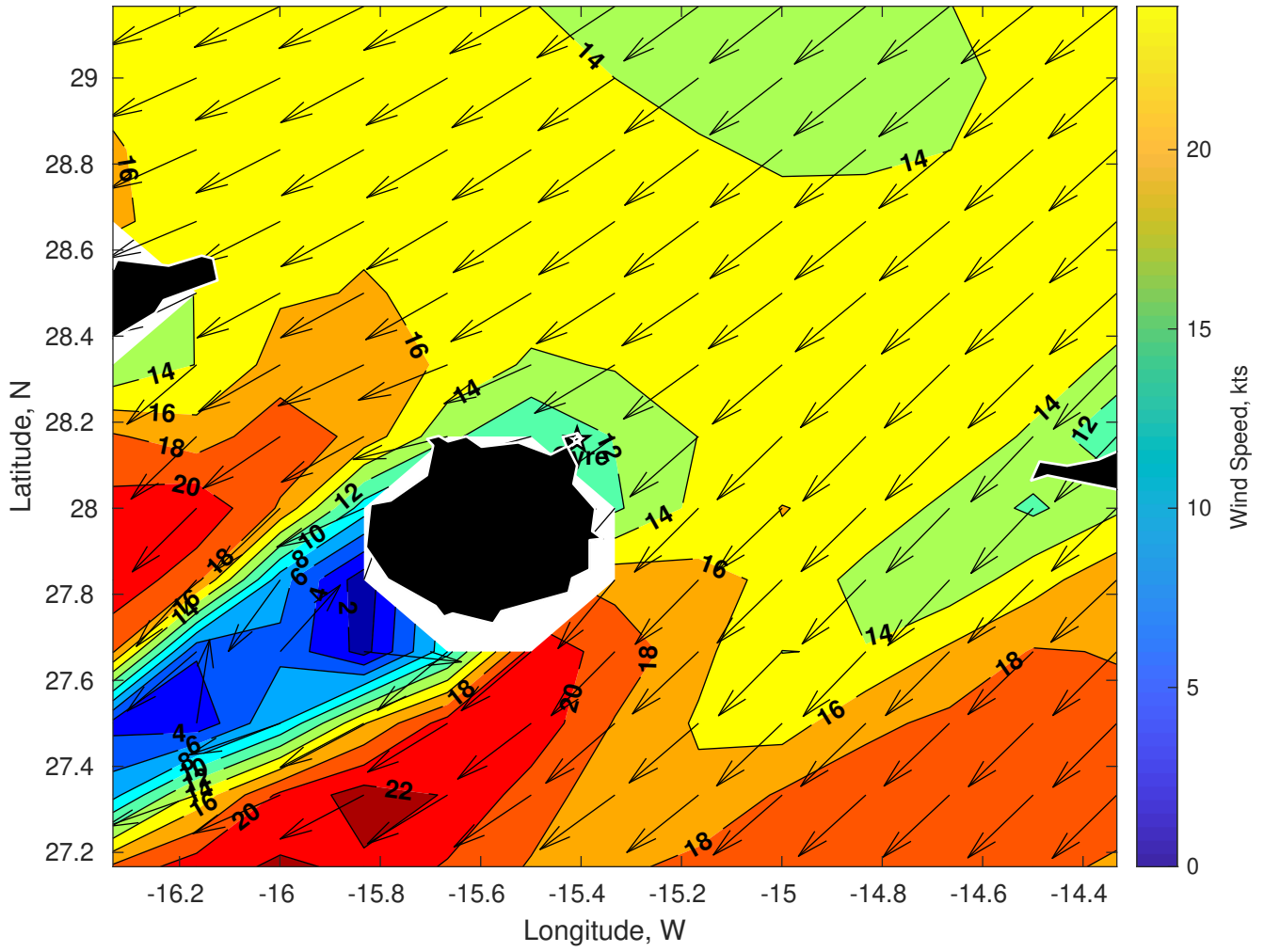
Wave Height (ft) for Gyre at 23-Feb-2025 09:00:00



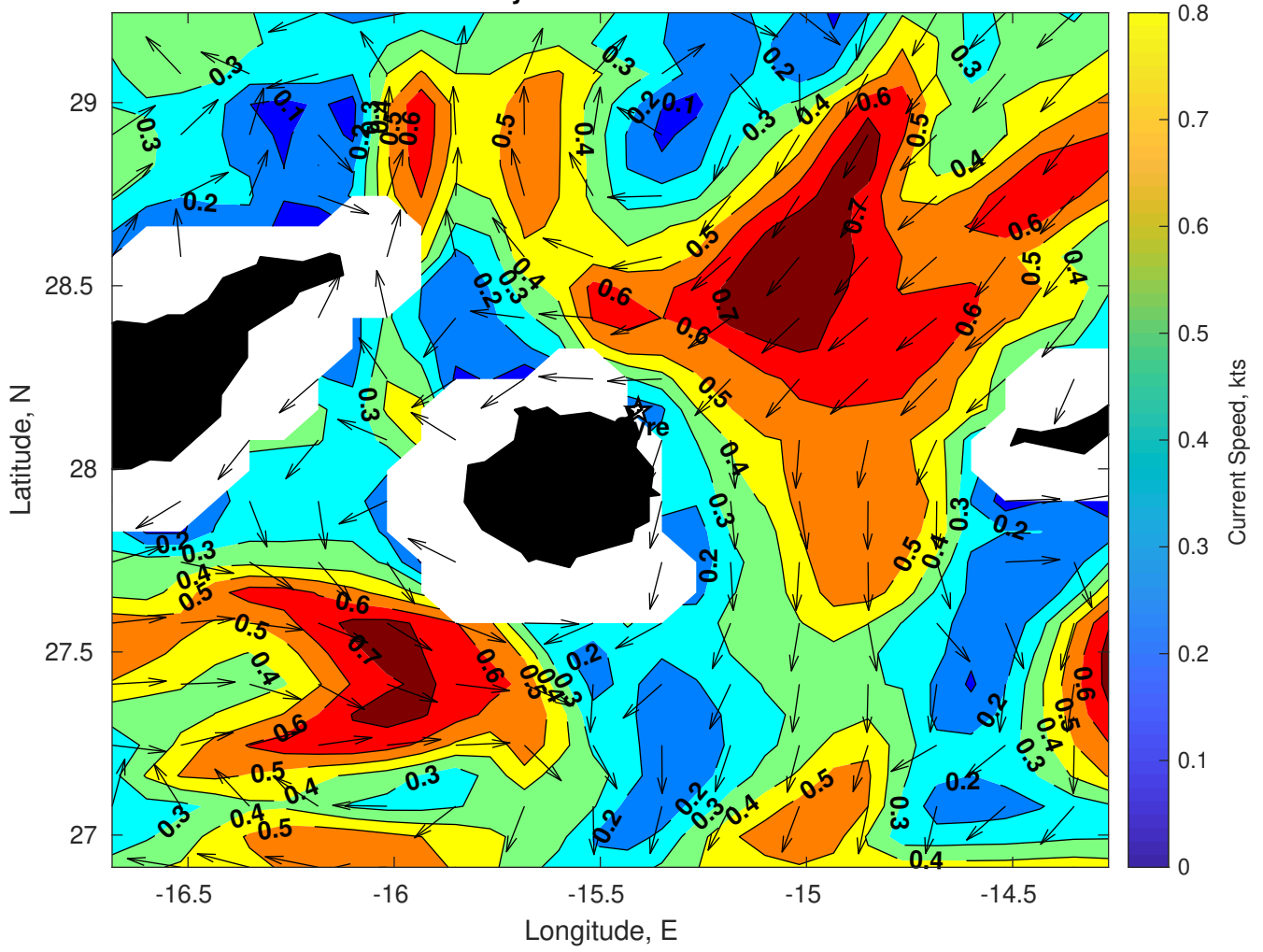
Wave Period (sec) for Gyre at 23-Feb-2025 09:00:00



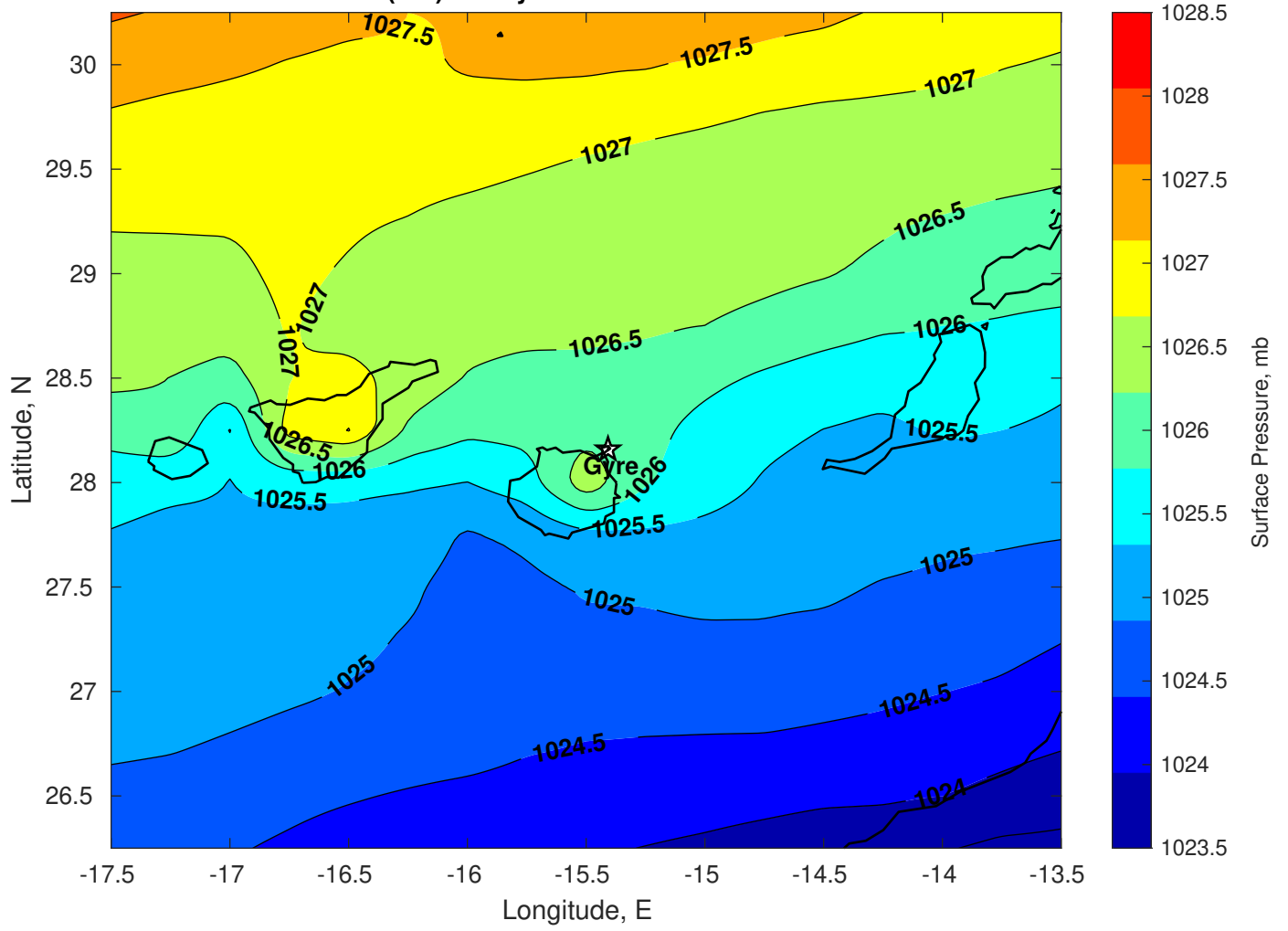
Winds (kts) for Gyre at 23-Feb-2025 09:00:00



Surface Currents for Gyre at 22-Feb-2025 00:00:00

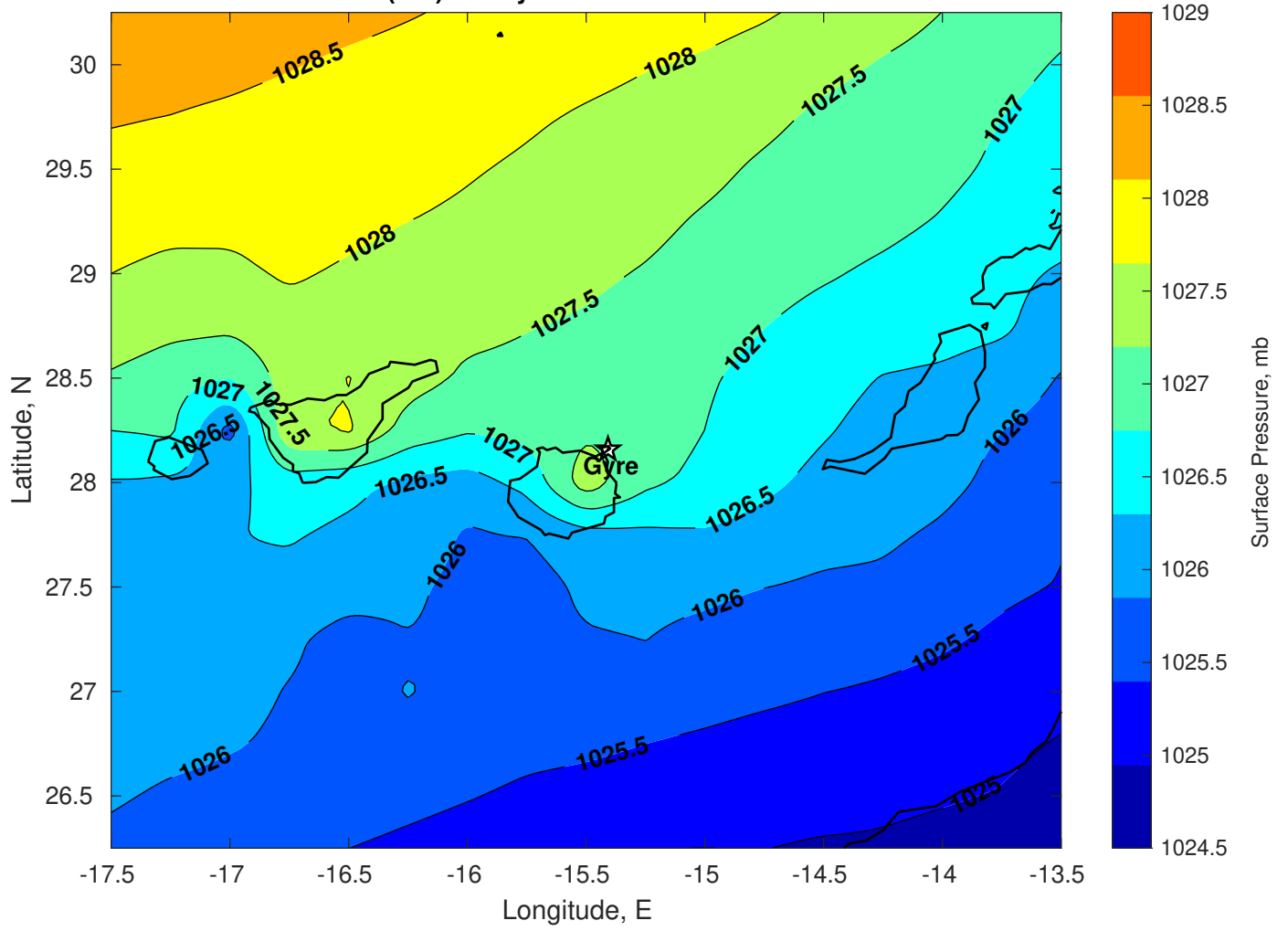


Surface Pressure (mb) for Gyre at 23-Feb-2025 00:00:00

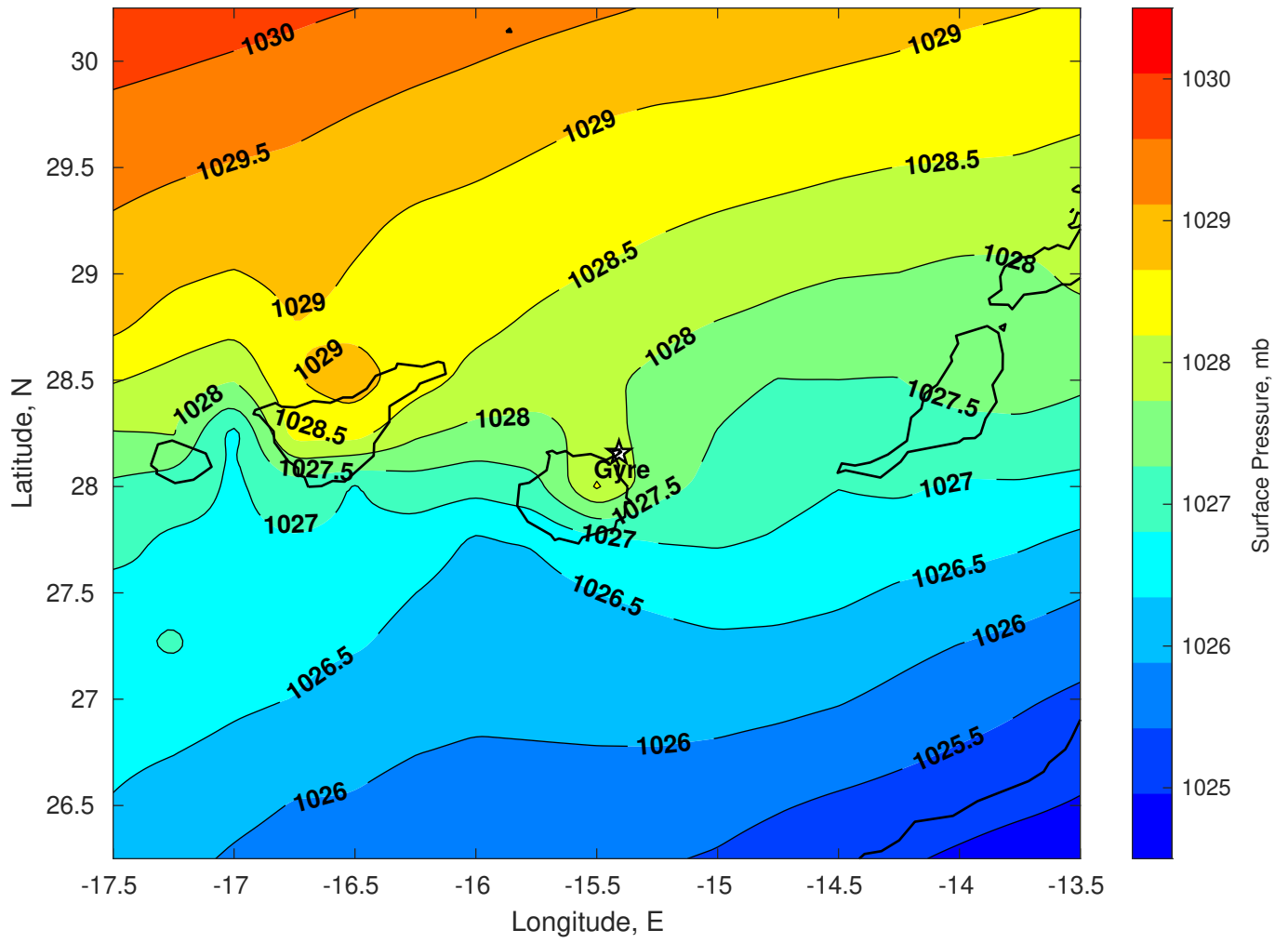




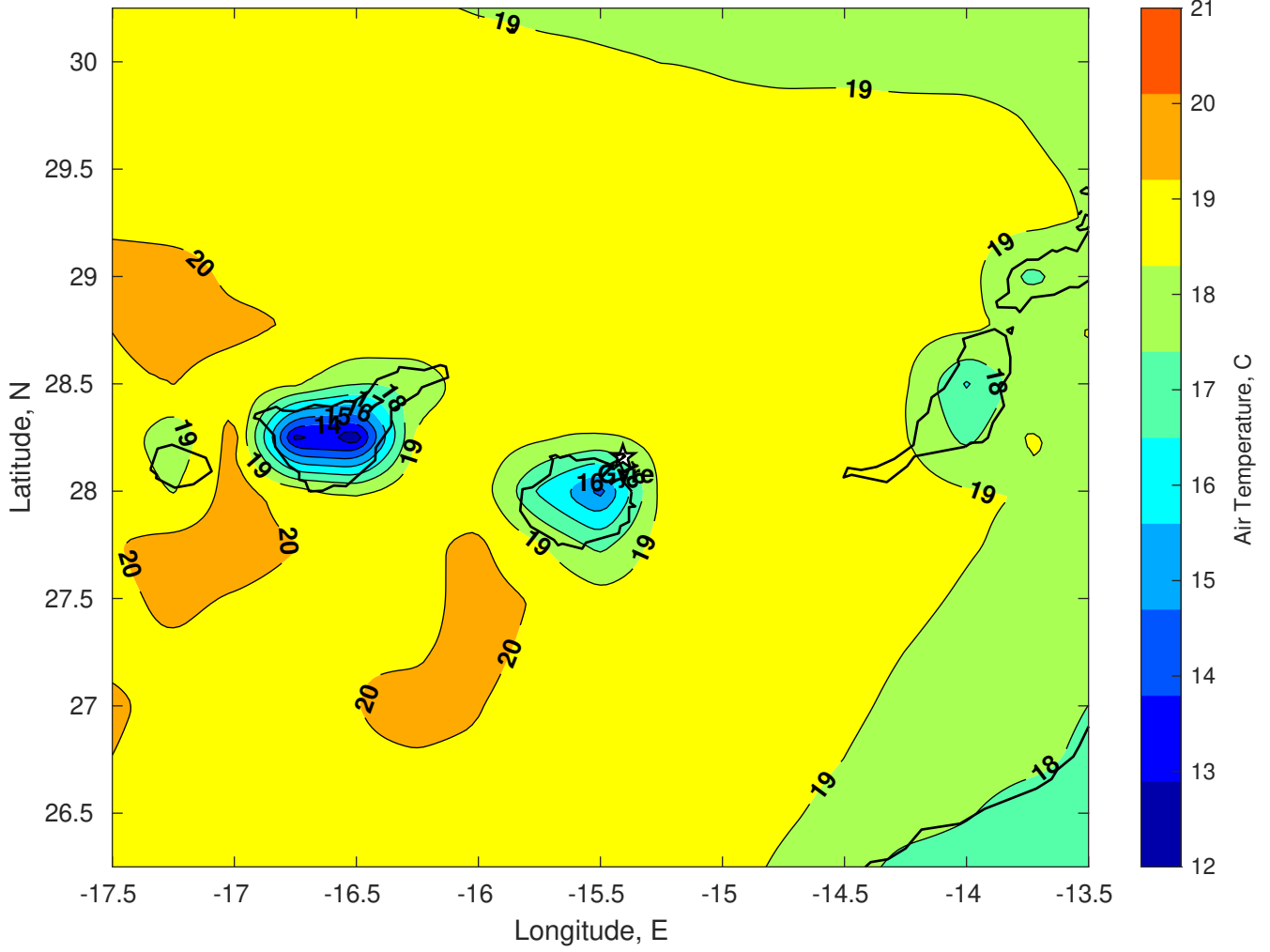
Surface Pressure (mb) for Gyre at 24-Feb-2025 00:00:00



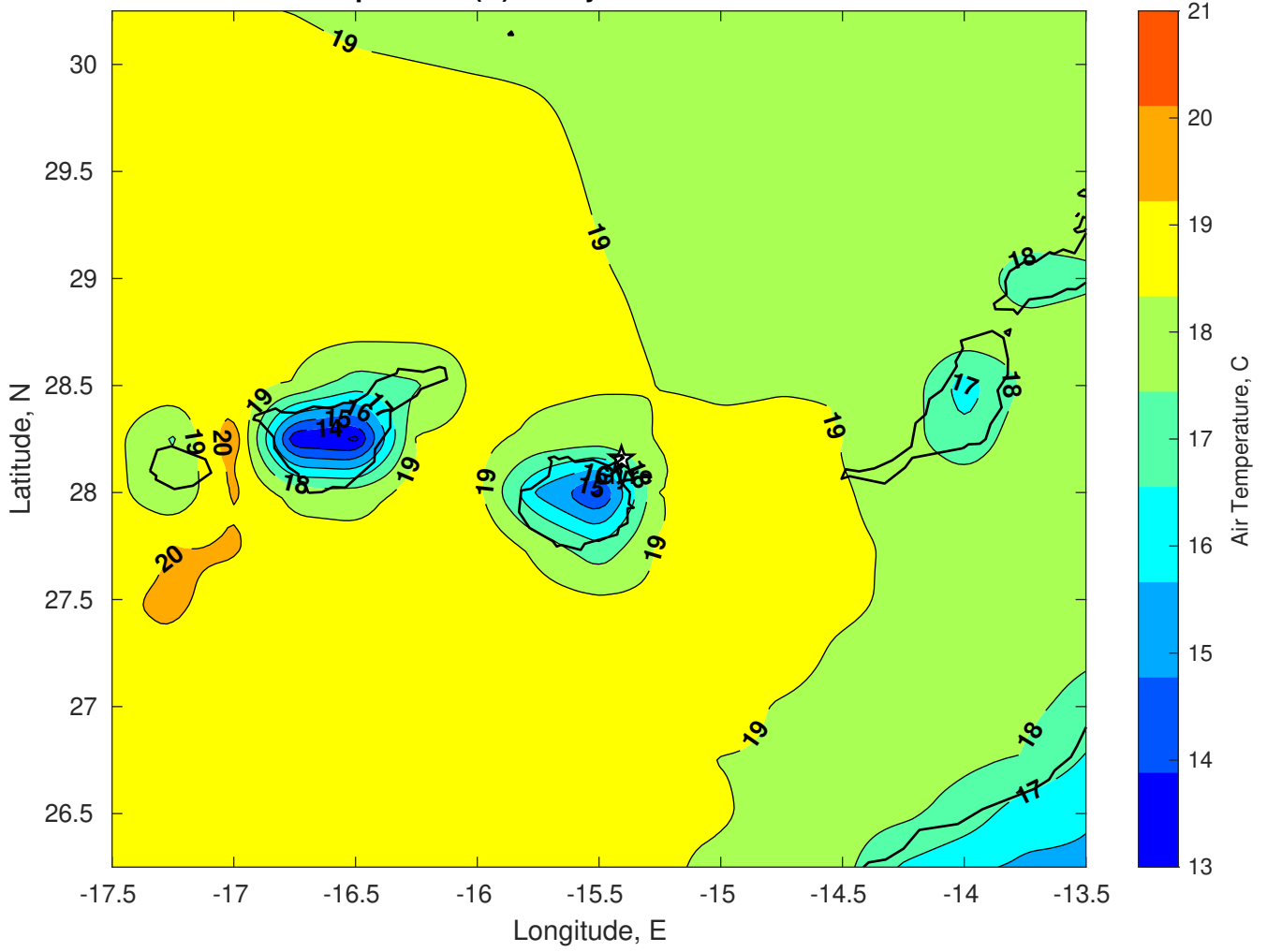
Surface Pressure (mb) for Gyre at 25-Feb-2025 00:00:00



Air Temperature (C) for Gyre at 23-Feb-2025



Air Temperature (C) for Gyre at 23-Feb-2025



Air Temperature (C) for Gyre at 23-Feb-2025

